

HOW TO OPERATE

THE

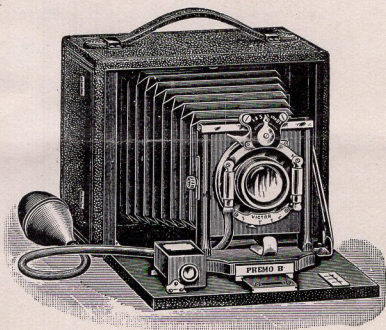
PREMO
B.

Manufactured by

ROCHESTER OPTICAL CO.,

Rochester, N. Y.

HOW TO OPERATE
THE
PREMO B.



MANUFACTURED BY
ROCHESTER OPTICAL CO.,
ROCHESTER, N. Y.

PUBLISHED BY
ROCHESTER OPTICAL CO.,
ROCHESTER, N. Y.

Premo Cameras

are carefully examined before leaving our factory, and we guarantee them to be perfect in every respect. By observing the instructions contained in the following pages, the purchaser will find the manipulation of the Premo so simple that it may be quickly understood and easily operated, even by the novice.

Full and explicit directions for Developing, Printing, Etc., will be found in *The Amateur Photographer*—a complete guide for beginners—a copy of which we furnish with each camera.

ROCHESTER OPTICAL CO.

HOW TO USE THE

PREMO CAMERA

STYLE B.

Open
The
Camera

FOR INSTANTANEOUS EXPOSURES.

by pressing the concealed button on top of
the Camera as shown in Fig. 1.

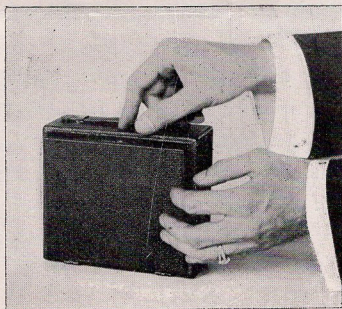


FIG 1.

The front will drop, forming a bed upon which the Camera Front carrying Lens and Shutter is moved forward, by grasping brass hook. See Fig. 2.

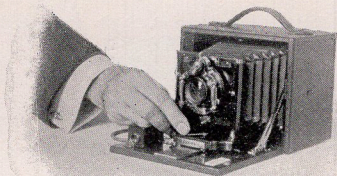


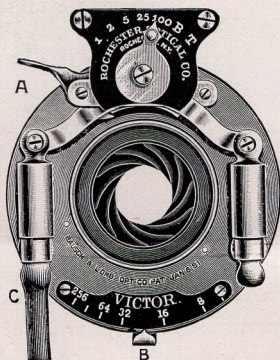
FIG. 2.

**Adjust
The
focus.**

Make a mental note of the approximate distance in feet the subject to be photographed is from you ; draw out front of camera by means of the clamp-hook until the small pointer at the left is over the figure corresponding to the estimated distance. Clamp the front in position by turning the clamp-hook to one side.

Objects more than 100 feet from the Camera are in focus when the pointer is set at 100.

THE VICTOR SHUTTER.



Explanation of Parts.

- A—Lever for Setting and Releasing Shutter.
- B—Diaphragm Index.
- C—Bulb or Pneumatic Release.

NEVER OIL THE VICTOR SHUTTER.

Set the Shutter

by pushing Lever **A** at the left upward (shutter facing you) until a "click" is heard.

When setting the shutter the leaves remain stationary, and do not expose the plate.

The Speed Of Shutter

may be varied from 1 second to fractional parts of a second by moving the indicator on the black metal disc at top to the right or left, until it is opposite the speed desired.

The Iris Diaphragms

may be regulated for any aperture by moving the Index **B** to the right or left.

The numbers are arranged according to the U. S. (uniform system) by which any aperture is just twice the size of the next higher number ; for instance when index is set at number 8 the opening is twice the size as that of 16 and requires only one-half the exposure.

For ordinary instantaneous exposures the largest size opening should be used as a rule, though in a *very bright light*, such as sea shore scenes and views of like character, the size smaller is preferable. The very small openings are intended for time exposures only.

**Load the
Plate
Holder**

and insert it between the ground-glass frame and rigid frame of camera, being sure it is held securely in position. See Fig. 3.

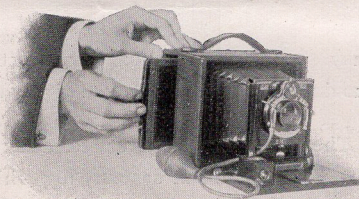


FIG. 3.

**Draw
The Slide**

nearest the front of camera and all is ready for the exposure.

Snap Shots

or Instantaneous pictures should always be made in brilliant light, but the sun should never shine in front of the camera while making an exposure. To prevent this stand so the sun will be at your back or a little to one side. Remember it is the subject to be photographed that requires the light and not the Camera.

To Make the Exposure.

Hold the Camera level and perfectly still. See page 10. Now look in the finder and when the view desired is in proper position, release shutter by a pressure on bulb or finger release as preferred and the picture is taken. Replace slide, reverse holder, and withdraw the other slide.

After setting shutter and adjusting the focus you are ready for the next exposure.



HOLD THE CAMERA LEVEL AND PERFECTLY STILL.

The View finder

is reversible for vertical or horizontal pictures.

As the same view is visible in the View Finder that is reflected on the ground-glass (or plate), you can readily determine when the object is in range.



TIME EXPOSURES.

Time exposures should be made with the camera resting on a tripod or other suitable support, as you will be unable to hold it steady enough to avoid a slight blur.

Set the Shutter

by placing the indicator opposite the letter T, then push lever A up as directed for instantaneous exposures.



FOCUSING FOR TIME EXPOSURE.

To focus on Ground Glass.

If you prefer to observe the focus on the ground-glass, rather than estimate the distance of subject to be photographed, remove the plate holder and drop the hinged panel at back of Camera. After pressing the bulb (which opens shutter), you can see through the aperture the reflected image (always reversed) on the ground-glass.

Adjust the front of camera until the view is perfectly clear, then fasten in position by turning clamp-hook to one side. After setting the shutter and adjusting the diaphragm, you are ready for the exposure.


The Exposure.

Place the plate holder in position and draw the slide nearest front of camera. Open shutter by a pressure on release lever or bulb, and after required duration of time close the shutter by a second pressure on release lever or bulb and the picture is taken.

The Rising and falling front.

This movement is used when more foreground or sky is required in the view. As for instance in photographing a building you might have foreground to spare, while the top of the building would be cut off. By moving the Lens upward you get in all the building and cut off a portion of the foreground.

By loosening the milled head at the left of Lens, the latter can be moved either way from the center.

 Always replace Lens in center before closing the camera, so the bellows will fold straight.

The Swing Back.

You will often find in photographing high buildings that the top is too near or perhaps beyond the edge of the ground-glass screen, and in order to introduce more sky you are compelled to tilt the camera upwards.

To avoid distortion of the image, the plate must be parallel with the vertical lines of the building.

To make this adjustment press the small flat spring (seen upon opening door at the side) and swing the back so the ground-glass screen will coincide with the parallel lines of object. Release spring and the back will lock itself in desired position.

When the spring lever is placed in the notch "C," the camera back is perfectly straight.

**Roll
Holder
for films.**

If the Roll Holder is used, the manipulation of the Camera is the same, except it will not be necessary to replace the slide after each exposure. You need only turn the key to wind a fresh film in position.

**To
Attach
Roll
Holder.**

Open the door at the side of Camera and remove the ground-glass screen by a slight

pull upwards. Then insert the Roll Holder, being careful to see that it fits securely against the Camera back.

The brass springs on the back of Roll Holder will produce sufficient pressure to hold it firmly in position.

The Holder is removed by exerting a slight backward pressure, before attempting to withdraw it.

A detailed description of the Roll Holder, and full instructions for working it will be found in the special circular accompanying same.

ROCHESTER OPTICAL CO.,

ROCHESTER, N. Y.

