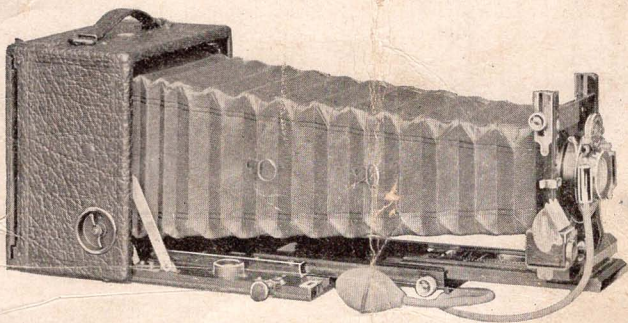


**POCO AND
BUCK-EYE
CAMERAS**



1 9 0 4



American Camera Mfg. Co.

Rochester, New York

Catalogue *of*
Poco & Buck-Eye
Cameras



1904

American Camera Mfg. Co.
Rochester, New York

To Our Patrons :

OUR facilities are such that value for value no concern can compete with us in the sale of photographic cameras. They are our specialty and the enormous quantities in which they are turned out, enables us to offer them at prices which absolutely defy competition.

Our goods are sold through regular photographic dealers everywhere and you can therefore have ample opportunity to carefully examine them before purchasing—can see exactly what you are buying. In this connection we wish to call your attention also to the additional advantages that you have in purchasing from a dealer. In the first place you save express charges. Our catalogue price means the exact price you will have to pay if you call for the goods, while if you should order by mail the express would cost you a large percentage of the price of the camera. The dealer has goods come in bulk by freight and the charges on each camera therefore amount to very little to him but would be a considerable item to you on a smaller shipment. But still more important, if you are a beginner in photography, is the fact that the dealer will gladly show you how to operate the instrument, and if you are to do your own developing and printing, will help you in the selection of an outfit.

Our goods are well known. The Poco plate cameras and the Buck-Eye film cameras have a high reputation which shall be fully maintained. Their lens and shutter equipment is first-class and the *quality* of the work they will do is excelled by that of no cameras on the market.

We recommend that you purchase through a dealer, but if your dealer does not have our goods in stock or is unwilling to secure them for you, we will ship direct from our factory, but we beg to call your attention to the fact that these goods are sold only as listed. At the prices at which we offer them we cannot afford to make changes or alterations or furnish special equipments,

The Choice of a Camera

WHETHER the amateur uses films or plates is a question which he must decide for himself. In either event we furnish a camera of the finest capabilities. Each style of camera has its advantages. Convenience unquestionably favors the film camera, while the plate cameras have somewhat of an advantage in that they permit focusing on the ground glass and the use of the swing front. As to the comparative quality of film and plates there is now little choice, the advantage being if anything with films because of their freedom from halation (a blurring of the image caused by reflection of light from the back of plate).

The Poco plate cameras have been long and favorably known. They are high class both in construction and in optical equipment. All of the Folding Pocos are made of *genuine* mahogany—not an imitation under a long sounding name.

With each of the Folding Pocos we furnish a carrying case without extra charge.

The Buck-Eye film cameras are wonderfully complete and practical instruments designed with special reference to the requirements of the amateur. They are complete film instruments, requiring no extras, except of course the film, for the picture taking to begin. The Nos. 3, 4, 5 and 6 may also be used with glass plates by the addition of a Buck-Eye Plate Attachment and plate holders to one's outfit. The Buck-Eye cameras use the regular film cartridges that are handled by all dealers.

Whether you decide on a Poco or Buck-Eye you may be sure of an honest instrument honestly made and that you are getting the best possible value for your money.

AMERICAN CAMERA MFG. CO.

Rochester, N. Y.

The American Junior Camera

For $3\frac{1}{2} \times 3\frac{1}{2}$ Pictures

Uses Glass Plates—Capacity, 6 Exposures

THE beginner in photography will find this camera so simple in manipulation that he can make good pictures from the outset, yet it is capable of such excellent work that he will continue to use it even after he has become an expert. It is so simple in construction and operation that a school boy or girl can readily operate it, yet the quality of the lens and shutter are such that good results are certain.



That the size of the pictures, $3\frac{1}{2} \times 3\frac{1}{2}$ inches, is very satisfactory is proven by the enormous number of cameras of this size that have been sold.

In spite of the low price at which these cameras are sold, nothing has been sacrificed in the lens. It has plenty of speed for ordinary snap-shot work, and at the same time is admirably adapted to making time exposures when the conditions of light require them. The lens, in fact, is a universal focus achromatic with a focal length of $5\frac{1}{8}$ inches and covers the plate to the extreme edges, giving negatives full of detail and depth.

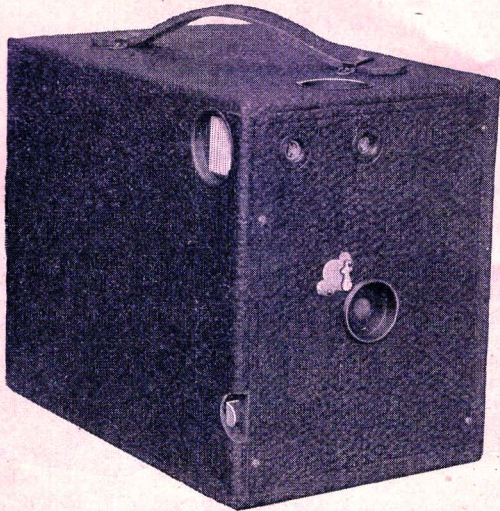
The shutter sets automatically after each exposure and provides for both snap shots and time exposures. It is simple and certain in action and is so strongly and well made that it never gets "out of order."

There is a large finder for locating the view and there is also a tripod socket.

The camera measures $4\frac{1}{2} \times 5\frac{1}{4} \times 7\frac{1}{4}$ inches and has space in back for three double plate holders (six exposures). As furnished the price includes one double plate holder $3\frac{1}{2} \times 3\frac{1}{2}$ inches.

THE PRICE

American Junior Camera, $3\frac{1}{2} \times 3\frac{1}{2}$, with one Double Plate Holder \$1.60
Extra American Junior, Double Plate Holders, $3\frac{1}{2} \times 3\frac{1}{2}$, each .30



American Senior Camera

Uses 4 x 5 Glass Plates. Meniscus Achromatic Lens
with Universal Focus and Ever-Set Shutter.

THE PRICE

American Senior Camera, 4 x 5, with one Double Plate Holder	\$2.00
Extra American Senior Double Plate Holders, 4 x 5, each	.30

American Senior Camera

IN DETAIL

NO SUCH camera bargain has ever been placed before the public as we offer in the American Senior. Quantity makes the price and the tremendous popularity of this instrument enables us to sell it at the marvelously low figure—two dollars. The picture it makes is the most popular of all amateur sizes, 4 x 5 inches, and with each camera we furnish a *double* plate holder. Inside the camera there is space for *three* double plate holders, giving it a capacity of *six* pictures at one loading.

The lens is a meniscus achromatic of wonderful covering power, it has a focal length of $5\frac{3}{4}$ inches and, being of Universal Focus, both near and far objects are sharply in focus at the same time, thus doing away with all necessity for focusing for each picture. The lenses fitted to the American Senior camera are absolutely the best of their type.

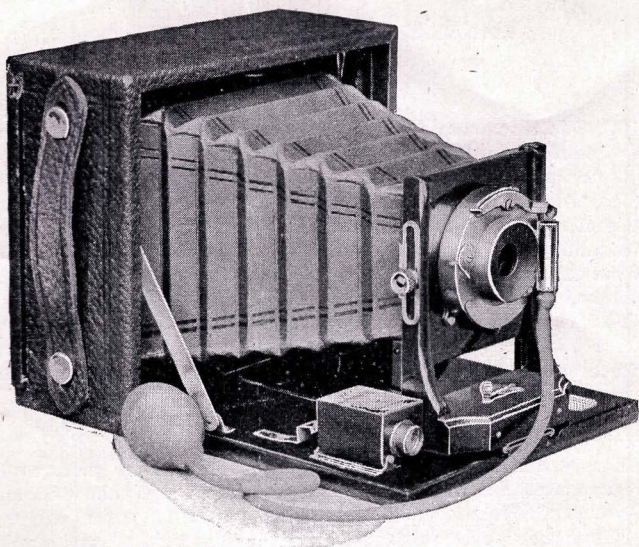
The shutter is automatic—setting itself for the next picture after each exposure. It provides for both snap-shots and time exposures and is accurate in every part.

There are two large view finders, one for vertical and one for horizontal exposures and also tripod sockets for both vertical and horizontal pictures.

The American Senior measures but $5\frac{1}{4}$ x $6\frac{3}{4}$ x 8 inches and weighs only 22 ounces, yet has space in the back for carrying three Double Plate Holders.

These instruments are well made in every particular and are capable of producing a high grade of work.

For the beginner who wants pictures of fair size and yet does not care to make a large investment, the American Senior is the ideal camera. It opens up the way to all the delights of amateur photography—and they are many. Wherever one goes he encounters scenes that will make beautiful pictures—pictures that will prove a delight long afterward if preserved by means of the camera. On the trip to lake or mountains, the camera should always be one's companion. On fishing and hunting excursions it is almost as much of an essential now-a-days as the rod or the gun. And there's a vast amount of enjoyment in taking pictures right at home. The baby and the old folks, the visitors and the family pets, to say nothing of the little nearby bits of scenery, all make delightful subjects for the camera of the amateur photographer.



Folding Poco No. 14

Uses Glass Plates. Has Automatic Shutter, with
Pneumatic Release and Iris Diaphragm Stops,
Achromatic Lens, Rising Front

Two Sizes, 4 x 5 and 5 x 7

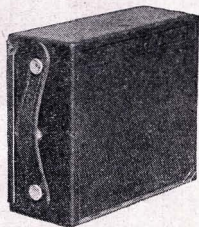
THE PRICE

Folding Poco, No. 14, with Carrying Case and one Double Plate Holder, 4 x 5	\$4.80
Do, 5 x 7	7.50
American Poco Plate Holders, 4 x 5, each50
Do, 5 x 765
Strap for Carrying Case, extra18

Folding Poco No. 14

IN DETAIL

IN the 1904 model of this little camera we offer a compact, handsome and efficient instrument at a marvelously low price. The construction is of the very best, the body, bed and front board being of *genuine* imported mahogany, bed has a piano hinge, the covering is of fine seal grain leather and the metal parts are of the finest lacquered brass.



The optical equipment consists of an achromatic lens of the very best quality, covering the plate sharply to the extreme corners, and an automatic shutter having the time, instantaneous and bulb movements, with Iris diaphragm stops and pneumatic release. The diaphragm stops have a scale graduated for openings Nos. 8, 16, 32, 64 and 128 and the shutter may be operated either by means of the pneumatic bulb or with the finger release.

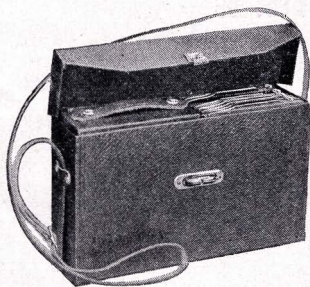
The camera is fitted with focusing scale, rising front to assist the operator in taking views of high buildings, mountains, peaks, etc. and also for cutting out an undesirable foreground, reversible finder for showing both upright and horizontal views and also two tripod sockets, one for vertical and one for horizontal pictures.

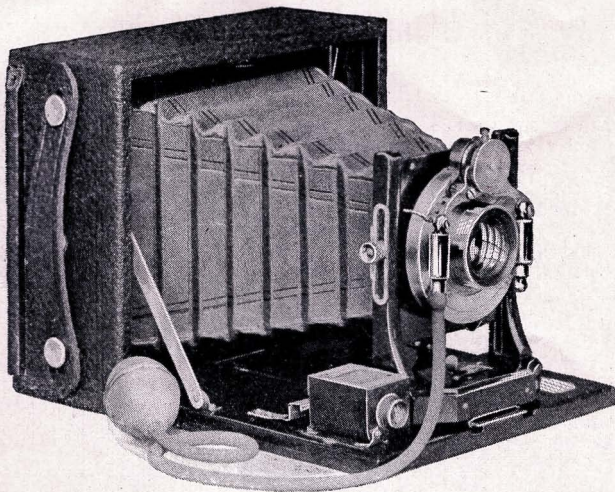
The Folding Poco No. 14 is equipped also with spring actuated ground glass for focusing, thus enabling the operator to compose and focus the picture on the ground glass or use the finder and focusing scale as desired. The ground glass is fully protected when not in use by a strong but neat leather covered hinged door.

The bellows are made of the finest quality red leather, lined with the best black gossamer cloth. They are both durable and handsome.

Included in the price of the camera is a handsome and well made carrying case which will hold four double plate holders in addition to the camera.

The Folding Poco No. 14 is absolutely the best folding camera ever offered at the price or at anywhere near the price. Every care is taken in the manufacture, the finish and the inspection of these instruments, and the very best material is used throughout.





Folding Poco No. 15

For use with Glass Plates. Has the Famous Unicum
Shutter and Rapid Rectilinear Lenses

Two Sizes, 4 x 5 and 5 x 7

THE PRICE

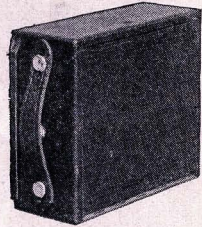
Folding Poco No. 15 with Sole Leather Carrying Case and one Double Plate Holder, 4 x 5	\$ 7.50
Do 5 x 7	10.00
American Poco Plate Holders, 4 x 5, each50
Do, 5 x 7, each65
Strap for Carrying Case, extra18

Folding Poco No. 15

IN DETAIL

NO CAMERA of equal quality or with such superb lens and shutter equipment has ever been offered at anywhere near the price we have placed upon the Folding Poco No. 15.

The lenses are Double Combination Rapid Rectilinear of high speed, covering the plate with perfect definition to the extreme corners and the shutter is the famous Unicum. This shutter has the pneumatic retarding device giving exposures for $\frac{1}{100}$, $\frac{1}{50}$, $\frac{1}{25}$, $\frac{1}{15}$, $\frac{1}{10}$ and 1 second, has also the "bulb" exposure whereby the shutter opens when the bulb is pressed and closes when it is released. It has also the "time" action, the shutter opening on the first and closing on the second pressure of the bulb. It has Iris diaphragm stops with scale and may be operated either by means of the pneumatic bulb or the finger release. Both the lenses and shutters are manufactured by the Bausch & Lomb Optical Co.

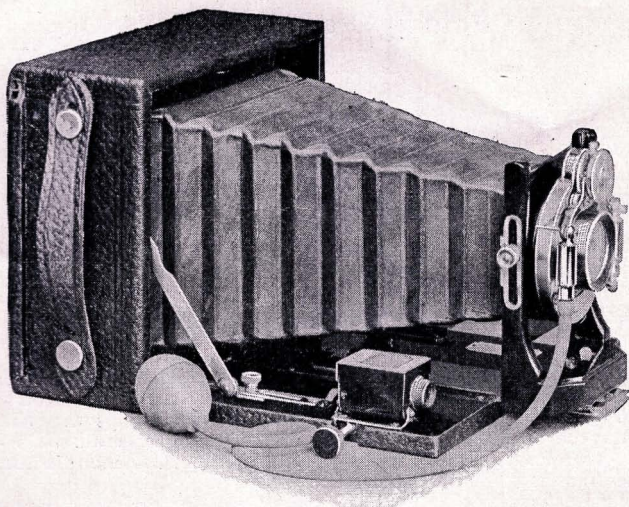


The Folding Poco No. 15 has a rising front for taking in the tops of high buildings, mountains, peaks etc., reversible finder, adapting it to both vertical and horizontal views, has both a spring actuated ground glass for focusing (properly protected by a hinged door) and a carefully adjusted focusing scale which may be used when desired and has two tripod sockets, one for vertical and one for horizontal views. The bellows are made of the finest grade of red leather, lined with black gossamer cloth—they are absolutely light tight and being well made of the best material they will remain so.

Made of genuine imported mahogany with lacquered brass fittings and covered with fine seal grain leather, it is as handsome and durable as it is efficient.

With each one we furnish a handsome sole leather carrying case with capacity for four double plate holders in addition to the camera. There is no more compact and portable plate camera made. This camera is therefore particularly desirable for carrying on one's outings, while the splendid lens and shutter are sure to contribute much toward the securing of good results.





Folding Poco No. 16

Uses Glass Plates. Unicum Shutter, Rapid Rectilinear
Lenses, Swing Bed, Rising Front, Rack
and Pinion

Two Sizes, 4 x 5 and 5 x 7

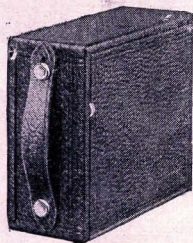
THE PRICE

Folding Poco No. 16, with Sole Leather Carrying Case and one Double plate Holder, 4 x 5	\$ 9.00
Do, 5 x 7	11.50
American Poco Plate Holders, 4 x 5, each50
Do, 5 x 7, each65
Strap for Carrying Case, extra18

Folding Poco No. 16

IN DETAIL

IN this camera are combined the special features which many experienced photographers desire yet the price places it within reach of all. It has the rising front and *swing bed* to assist in taking in the tops of high buildings, or in cutting out an undesirable fore ground and has the rack and pinion for fine focusing. The bellows also have an extra draw (4 x 5 have a capacity of 8¾ inches and the 5 x 7 10½ inches) enabling one to work closer to the subject than with the ordinary hand camera.



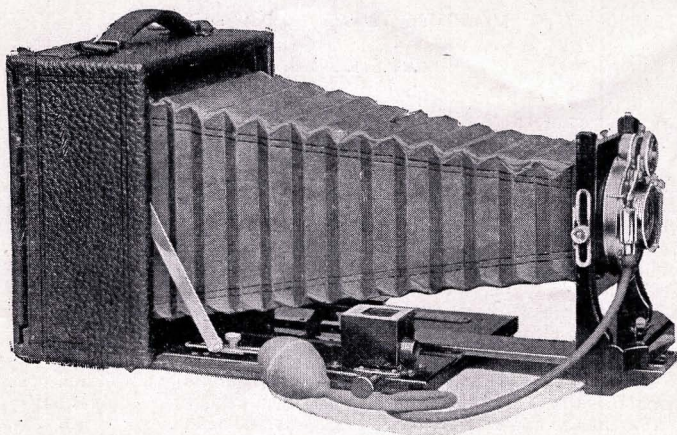
In the scope of work which it will accomplish, combined with compactness and optical excellence this camera has no equal at anywhere near the same price. Every detail has been worked out with the utmost care to produce at a moderate cost an instrument that the experienced photographer can use with perfect satisfaction.

The lenses are Double Combination Rapid Rectilinear of high speed covering the plate with perfect definition to the extreme corners and the shutter is the famous Unicum. This shutter has the pneumatic retarding device, giving exposures for $\frac{1}{100}$, $\frac{1}{50}$, $\frac{1}{25}$, $\frac{1}{5}$, $\frac{1}{2}$ and one second; has also the "bulb" exposure whereby the shutter opens when the bulb is pressed and closes when it is released. It has also the "time" action, the shutter opening on the first and closing on the second pressure of the bulb. It has Iris diaphragm stops with scale and may be operated either by means of the pneumatic bulb or the finger release. Both the lenses and shutters are manufactured by the Bausch & Lomb Optical Co.



The Folding Poco No. 16 has both ground glass and scale for focusing, piano hinge front, gossamer lined, red leather bellows of absolutely the finest quality, reversible finder for upright and horizontal views, tripod sockets for vertical pictures, is made of *genuine* imported mahogany, has lacquered brass trimmings, fine seal grain leather covering—a handsome and durable instrument.

The price includes a sole leather carrying case with capacity for camera and four double plate holders.



Folding Poco No. 17

For Glass Plates. Double Symmetrical Rectilinear Lens,
 Unicum Shutter, Reversible Back, Swing Bed,
 Rising Front, Rack and Pinion for Focusing,
 Double Extension Bellows.

Two Sizes, 4 x 5 and 5 x 7

THE PRICE

Folding Poco No. 17, with Carrying Case and one Double Plate Holder, 4 x 5	\$10.50
Do, 5 x 7	13.00
American Poco Double Plate Holders, 4 x 5, each50
Do, 5 x 7, each65
Strap for Carrying Case, extra18

Folding Poco No. 17

IN DETAIL

A FEATURE of this instrument is the Reversible Back by means of which one makes either upright or horizontal pictures by merely changing the position of the back without changing position of camera when using a tripod. For hand exposures the operator may reverse either the camera or the back as desired.

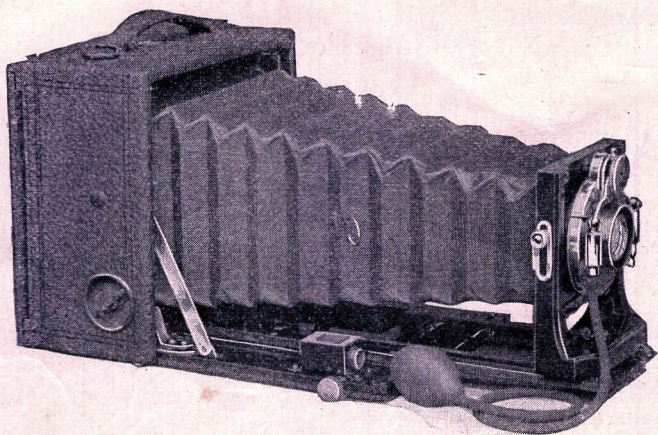
The lenses are Double Symmetrical Rectilinear of high speed, enabling the operator to make instantaneous exposures under conditions of light which would make them impossible with less powerful lenses. The shutter is the famous Unicum. This shutter has the pneumatic retarding device, giving exposures for $\frac{1}{100}$, $\frac{1}{50}$, $\frac{1}{25}$, $\frac{1}{15}$, $\frac{1}{10}$ and one second; has also the "bulb" exposure whereby the shutter opens when the bulb is pressed and closes when it is released. It has also the "time" action, the shutter opening on the first and closing on the second pressure of the bulb. It has Iris diaphragm stops with scale and may be operated either by means of the pneumatic bulb or the finger release. Both the lenses and shutters are manufactured by the Bausch & Lomb Optical Co.



The Folding Poco No. 17 has a swing bed and a rising front, to be used in regulating the amount of foreground and sky, has a leveling finder and focusing scale and tripod socket and spring actuated ground glass. The bellows have a draw of sufficient length to enable the operator to work unusually close to the subject. For instance in making amateur portraits at home the extra draw to bellows enables one to secure *large bust photographs* that are highly satisfactory.

The bellows are made of the finest red leather, lined with the best black gossamer—are handsome and durable. The camera is made throughout of the finest imported mahogany, has piano hinge bed, lacquered brass fittings and is covered with fine seal grain leather.

The price includes one double plate holder and a sole leather carrying case, with capacity for five double plate holders beside the camera.



Folding Poco No. 18

For Glass Plates. Double Symmetrical Rectilinear Lens,
Unicum Shutter, Swing and Reversible Back,
Rising Front, Rack and Pinion for Focus-
ing, Double Extension Bellows

Three Sizes, 4 x 5, 5 x 7, 6½ x 8½

LENS DETAILS

Equivalent Focus	4 x 5 6⅝ in.	5 x 7 8½ in.	6½ x 8½ 11 in.
Focus Rear Combination	10 "	14½ "	16½ "
Focal Capacity of Camera	11 "	16 "	18 "

THE PRICE

Folding Poco No. 18 with Carrying Case and one Double Plate Holder, 4 x 5	\$12.50
Do, 5 x 7	15.00
Do, 6½ x 8½	20.00
American Poco Double Plate Holders, 4 x 5, each50
Do, 5 x 765
Do, 6½ x 8½85
Strap for Carrying Case, extra18

Folding Poco No. 18

IN DETAIL

THIS splendidly equipped little camera has not only the reversible back described in connection with the Folding Poco No. 17, but it has also a *swing back*, the optically correct device for taking in the tops of high buildings, cutting out an undesirable foreground, etc.

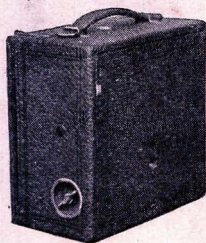
The double extension of the bellows enables the operator to take advantage of the Double Symmetrical Rectilinear lenses and use the rear combination alone when desired. For all practical purposes this gives the advantage of two lenses with each instrument, one having nearly twice the focal length of the other.

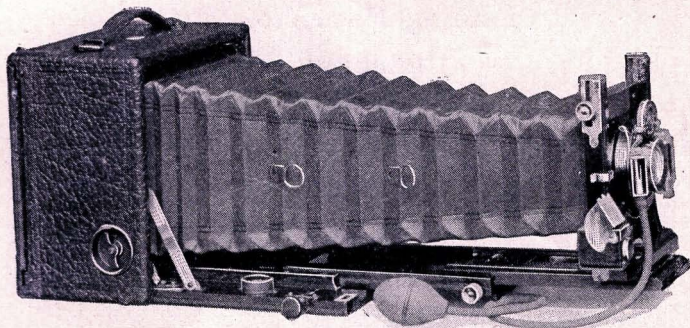
The shutter is the famous Unicum. This shutter has the pneumatic retarding device, giving exposures for $\frac{1}{100}$, $\frac{1}{50}$, $\frac{1}{25}$, $\frac{1}{15}$, $\frac{1}{10}$ and one second; has also the "bulb" exposure whereby the shutter opens when the bulb is pressed and closes when it is released. It has also the "time" action, the shutter opening on the first and closing on the second pressure of the bulb. It has Iris diaphragm stops with scale and may be operated either by means of the pneumatic bulb or the finger release. Both the lenses and shutters are manufactured by the Bausch & Lomb Optical Co.

The Folding Poco No. 18 has spring actuated ground glass for focusing or may be focused by means of the scale and the picture located in the finder. The bellows are made of the finest red leather and are lined with opaque gossamer cloth—they are highly durable and absolutely light tight. It has a rack and pinion, tripod socket and rising front.

Made throughout of the finest mahogany selected with care for beauty of grain and with the finest lacquered brass fittings and seal grain covering, it is a superbly beautiful as well as efficient instrument. Every camera in the Poco line is well and carefully made, but this is an instrument of which we are particularly proud—one which is simple to operate, and will therefore give good results in the hands of the beginner, while at the same time it has a scope and capacity that appeal to the most experienced photographic workers.

Price includes sole leather carrying case, with capacity for six double plate holders beside the camera.





Triple Bed Poco No. 19

For Glass Plates. Triple Focus Rectilinear Lens,
Wollensak Automatic Shutter, Swing and Reversible Back, Rack and Pinion Focus

Three Sizes, 4 x 5, 5 x 7 and 6½ x 8½

LENS DETAILS

	4 x 5	5 x 7	6½ x 8½
Equivalent Focus	5¾ in.	7¾ in.	10½ in.
Focus Rear Combination	10 "	13 "	16½ "
Focus Front Combination	13 "	18½ "	24 "
Focal Capacity of Camera	15 "	22 "	25 "

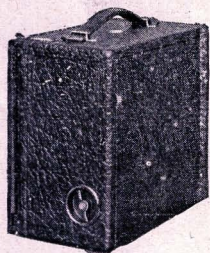
THE PRICE

Triple Bed Poco No. 19 with Carrying Case and one Double Plate Holder, 4 x 5	\$17.00
Do, 5 x 7	22.00
Do, 6½ x 8½	30.00
American Poco Double Plate Holders, 4 x 5, each50
Do, 5 x 765
Do, 6½ x 8½85
Strap for Carrying Case, extra18

Triple Bed Poco No. 19

IN DETAIL

NO feature that a combination hand and tripod camera should have is omitted in this beautiful instrument. It is adapted to every sort of work from making snap-shots on the street to the copying of drawings with microscopic exactness. Expense has not been considered in its construction. It is as well made and as completely equipped as a camera can be made and equipped regardless of the cost. No matter what price you pay you cannot buy a better camera than the Triple Bed Poco.



The triple bed gives an extension to the bellows, permitting the use of either the front or rear combination alone (see table on opposite page) and is of special advantage when using the complete lens in photographing flowers and other small objects.

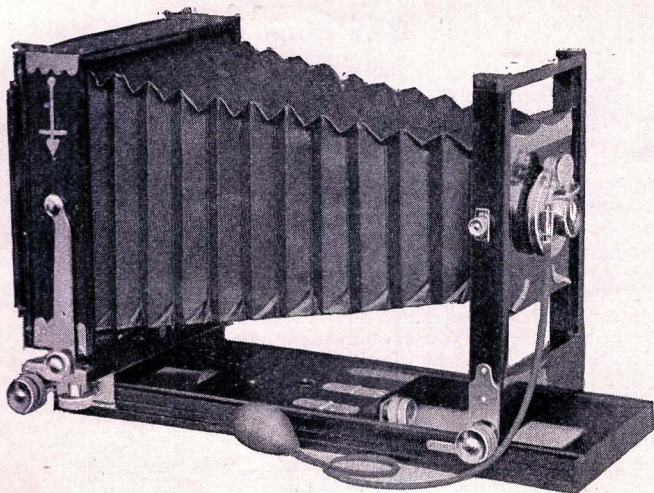
The lens is not only Triple Focus but is very rapid and strictly rectilinear. The "triple focus" lens gives the advantages of three lenses in one, each having a different focal length, for one may use the two combinations together, or may use either the front or the rear combination alone. The table on page 18 gives the focal lengths in detail. The Wollensack Automatic shutter, has the "time," "bulb" and automatic actions, the last giving exposures for $\frac{1}{100}$, $\frac{1}{75}$, $\frac{1}{50}$, $\frac{1}{25}$, $\frac{1}{10}$, $\frac{1}{5}$ and $\frac{1}{2}$ of a second and one second, and it is equipped with Iris diaphragm stops with graduated scale.



This camera has reversible and swing back, spring actuated ground glass, reversible finder, level, rack and pinion, focusing scale, rising front and tripod socket. The bellows are made of the best red leather and lined with black gossamer cloth.

Made of selected mahogany, has lacquered brass fittings and is covered with the best quality of grain leather of beautiful design. The Triple Bed Poco is not only a camera that is adapted to every kind of work by reason of its superb mechanical and optical features, but it is so beautiful in its design and finish that it never fails to call forth words of praise from all who see it. It is a camera which any photographer may well feel proud to possess.

Price includes sole leather carrying case with capacity for camera and six double plate holders.



Poco View Camera

Double Swing Reversible Back, Long Draw, Rising
Front, Unicum Shutter and Rapid
Rectilinear Lens

Three Sizes, 5 x 7, 6½ x 8½, 8 x 10

THE PRICE

Poco View Camera, with one Double Plate Holder and Carrying Case, 5 x 7	\$18.00
Do, 6½ x 8½	24.00
Do, 8 x 10	28.00
American Poco Double Plate Holders, 5 x 7, each	.65
Do, 6½ x 8½	.85
Do, 8 x 10	1.15

Poco View Camera

IN DETAIL

THIS is in every respect a high grade instrument of most beautiful design and finish. Both the camera body and front are of polished mahogany, the metal parts are of polished brass and the finish and attention to detail are perfect.

Fitted with rack and pinion both at front and back so that either the lens or the ground glass may be moved.

Has an instantly reversible back with *double swing* and a rising front.

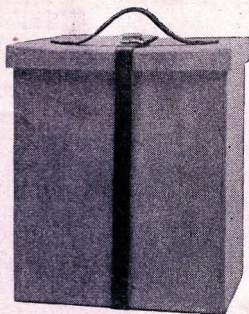
The back may be moved to any position on bed by means of rack and pinion thus permitting the use of lenses of any angle no matter how wide. This detail is one of great importance, for while you may not now contemplate using any other lens than that with which the camera is equipped, there is always a possibility that you may desire to use it for extreme wide-angle work.

The bellows are made of the very best leather, gossamer lined and especial attention has been given to their durability—a point of the utmost importance in a view camera.

The lenses are Double Combination Rapid Rectilinear of high speed, covering the plate with perfect definition to the extreme corners and the shutter is the famous Unicum. This shutter has the pneumatic retarding device, giving exposures for $\frac{1}{100}$, $\frac{1}{50}$, $\frac{1}{25}$, $\frac{1}{5}$, $\frac{1}{2}$ and one second; has also the "bulb" exposure whereby the shutter opens when the bulb is pressed and closes when it is released. It has also the "time" action, the shutter opening on the first and closing on the second pressure of the bulb. It has Iris diaphragm stops with scale and may be operated either by means of the pneumatic bulb or the finger release. Both the lenses and shutters are manufactured by the Bausch & Lomb Optical Co., which fact is a sufficient guarantee that they are of the highest quality, and capable of producing the very best work.

The carrying case is compact and light, covered with strong canvas and will hold the camera, lens and shutter and three plate holders.

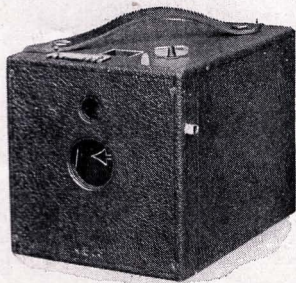
We have no hesitation in recommending the Poco View Camera as one of the most efficient, reliable and durable view cameras on the market. It is up-to-date in every particular and the material and workmanship entering into its construction are the very best. The photographer who wishes an instrument for turning out the highest class of view work can make no better selection than the Poco View Camera.



No. 1 Buck-Eye Camera

Uses Daylight Loading Film Cartridges for Two, Four,
Six or Twelve Exposures

Pictures $3\frac{1}{2} \times 3\frac{1}{2}$ Inches



THE No. 1 Buck-Eye is absolutely the greatest camera bargain ever offered. It is a well made, high-grade camera, so simple in operation that anyone can make good pictures with it. It is as good an instrument in every respect as those which are ordinarily sold at fifty to one hundred per cent. more. Its low price is only made possible by the quantities in which these goods are made, the extraordinarily complete facilities and our determination to offer the best goods at competition defying prices.

The No. 1 Buck-Eye has an achromatic lens, with a *fixed focus* and is thus instantly ready for work at all times. The lens has *full covering power*, has a focal length of $4\frac{1}{2}$ inches, and is admirably adapted to the requirements of the amateur.

The shutter is one of the strong points of the No. 1 Buck-Eye *having three speeds for instantaneous exposures*, fast, medium and slow, and it may also be used for time exposures. It is rotary in action—safe—sure—accurate.

Fitted with three diaphragms (stop openings) for regulating the amount of light admitted through the lens, and with a finder for locating the picture with accuracy.

The No. 1 Buck-Eye Cameras measure $4\frac{1}{4} \times 4\frac{1}{4} \times 5\frac{1}{2}$ inches, and weigh but 20 ounces. They have tripod socket for use in making time exposures, and are thoroughly reliable and efficient instruments for this class of work as well as for snap shots.

The No. 1 Buck-Eye cameras are covered with fine seal grain leather and handsomely finished and are well constructed in every particular.

THE PRICE

No. 1 Buck-Eye Camera, $3\frac{1}{2} \times 3\frac{1}{2}$	\$2.50
Black Sole Leather Carrying Case	1.00

No. 2 Buck-Eye Camera

Uses Daylight Loading Film Cartridges for Two, Four,
Six or Twelve Exposures

Pictures 4 x 5 Inches

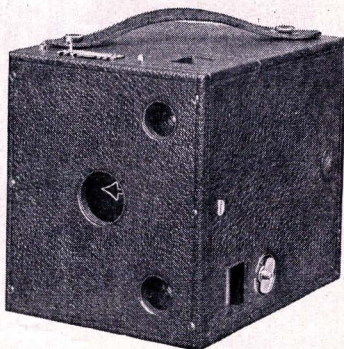
THE No. 2 Buck-Eye is always ready for use. No stopping to open up, no delay for focusing. And there is not an inch of waste space in it—it is compact and capable.

There are no better lenses made for fixed focus cameras than those used on the No. 2 Buck-Eye. They are both meniscus and achromatic and of the very finest quality. They are made especially for this camera with the utmost care and are the very best lenses for 4 x 5 fixed focus cameras. The shutter is on

the rotary principle and has three speeds for snap shots, fast, medium and slow, and has also the adjustment for time exposures. It is perfectly simple in operation insuring not only an easy mastery by the amateur but accuracy and certainty of results as well. The shutters are fitted with three diaphragm or stop openings.

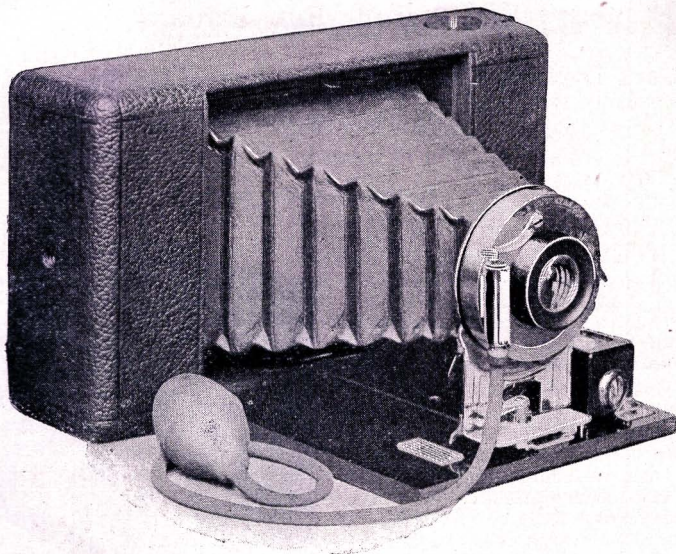
The No. 2 Buck-Eyes have two view finders, one for upright and one for horizontal exposures, and also two tripod sockets so that pictures may be taken either way of the plate whether a tripod is employed or not.

They are covered with the finest seal grain leather and are beautifully finished. The daylight loading standard make film cartridges which this instrument uses are sold by camera dealers the world over, so that the purchaser is sure to be able to get supplies without difficulty. Indeed, the same may be said of all the Buck-Eye cameras—a point worth looking after in purchasing a photographic instrument.



THE PRICE

No. 2 Buck-Eye Camera, 4 x 5	\$4.00
Black Sole Leather Carrying Case	1.20



Nos. 3 & 4 Folding Buck-Eyes

Use Daylight Loading Film Cartridges for Two, Four,
Six or Twelve Exposures

Rapid Rectilinear Lenses. Automatic Shutters with Pneu-
matic Release and Iris Diaphragm Stops

	THE PRICE	
	No. 3 3¼ x 4¼	No. 4 4 x 5
Folding Buck-Eye Camera	\$7.50	\$12.00
Black Sole Leather Carrying Case	1.00	1.20
Glass Plate Attachment with one single plate holder	1.90	1.90
Extra Buck-Eye Single Plate Holders, each40	.50

Nos. 3 & 4 Folding Buck-Eyes

IN DETAIL

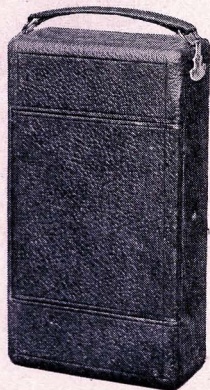
THE No. 3 size is a practical pocket camera measuring only 2 inches thick by $4\frac{1}{2}$ inches wide and $7\frac{7}{8}$ inches long when closed. The No. 4 is but a trifle larger, its measurements being $2\frac{1}{4}$ x $5\frac{1}{8}$ x $8\frac{7}{8}$. The optical equipment consists of a Double Combination Rapid Rectilinear Lens, and our Buck-Eye Automatic Shutter. This lens is absolutely the best product that has ever been offered on a camera at such a low price, and will give clean, sharp pictures to the very edges. The Buck-Eye Automatic Shutter is always set and is operated by a pressure of the pneumatic bulb. It has three movements. By setting the indicator at "I" it makes instantaneous exposures (snap-shots). Moving the indicator to "B" sets it for "Bulb" exposures, whereby the shutter opens when the bulb is pressed and closes when it is released. With the indicator set at "T" time exposures are made, one pressure of the bulb opening the shutter and a second pressure closing it. There are Iris diaphragm stops, by which the amount of light entering through the lens is accurately regulated, these stops being numbered on the U. S. System, 4, 8, 16, 32, 64 and 128.

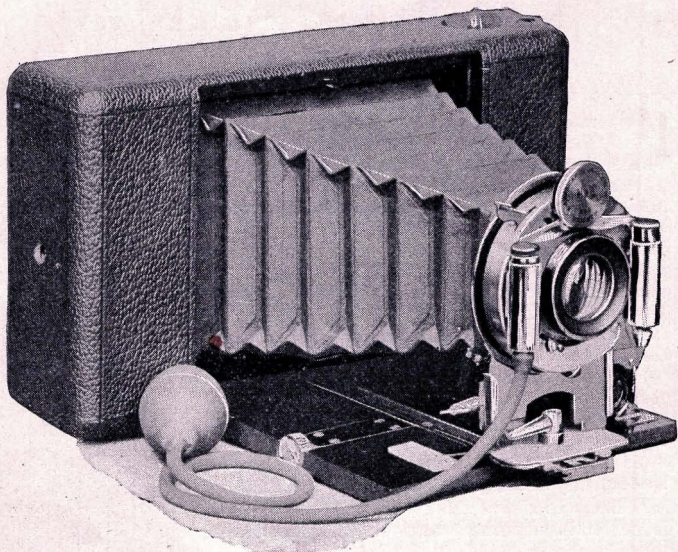
There is a reversible brilliant finder which is perfectly accurate, and enables the operator to see just what is to be in the picture. Being reversible the finder is used for either horizontal or upright pictures, while the hood keeps the strong light from the viewing lens, making it easy to compose the picture.

There are two tripod sockets one for upright and one for horizontal pictures, thus adapting the camera to both kinds of exposures when it is used on a tripod for time exposures, the same as when it is used in the hand for snap-shots.

The focusing scale is accurately made, having a range from 6 feet to 100 feet, and is carefully adjusted for each instrument. The front bed is of genuine mahogany, rubbed down to a piano finish, the shutter is of lacquered brass with black enamel and nickel fittings, while all the exposed metal parts of the camera itself are heavily nicked. The camera is covered with the finest black seal grain leather; while the bellows are of soft red leather lined with black cloth. When closed the Buck-Eye is rich and inconspicuous—opened for use there is a harmony of coloring and contrast that is a delight to the eye.

The Nos. 3 and 4 Folding Buck-Eyes may be used with glass plates if desired by the addition of a Buck-Eye Glass Plate Attachment to one's outfit. These attachments are described in detail on page 30.





Nos. 5 & 6 Folding Buck-Eyes

Use Daylight Loading Film Cartridges for Two, Four,
Six or Twelve Exposures

Extra Rapid Rectilinear Lens. B. & L. Automatic Shutters with
Pneumatic Release and Iris Diaphragm Stops. Rack and Pinion for
Focusing.

THE PRICE

	No. 5 3/4 x 4 1/4	No. 6 4 x 5
Folding Buck-Eye Camera	\$15.00	\$18.00
Black Sole Leather Carrying Case	1.00	1.20
Glass Plate Attachment with one single plate holder	1.90	1.90
Extra Buck-Eye Single Plate Holders, each40	.50

Nos. 5 & 6 Folding Buck-Eyes

IN DETAIL

THE superb equipment of these high grade cameras causes them to appeal to those who require an instrument of the very finest quality.

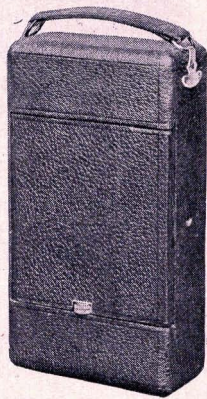
When closed they are wonderfully compact, the No. 5 being only $2 \times 4\frac{1}{2} \times 7\frac{7}{8}$ inches, and the No. 6 $2\frac{1}{4} \times 5\frac{1}{8} \times 8\frac{3}{8}$ inches, yet they contain in this small space every improvement that is of value.

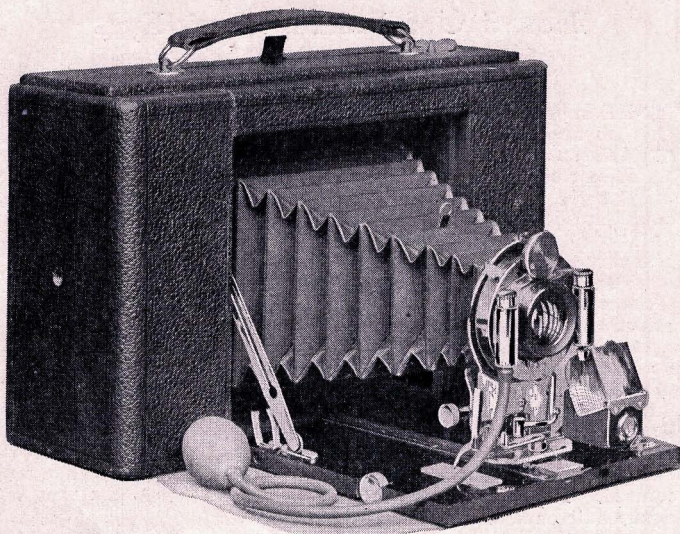
The lenses are a Double Combination Extra Rapid Rectilinear of great covering power and speed. The No. 5 has a focal length of 6 inches and the No. 6 of $6\frac{1}{2}$ inches. The quality of these lenses is such that they work splendidly with the U. S. 4 opening, thus admitting light so rapidly that snap-shots can be made under conditions that are impossible with the majority of hand cameras and which a few years ago would have been considered out of the question. The high grade shutter is in keeping with the high-grade lens. It is as the name indicates, always set, and gives automatic exposures $\frac{1}{100}$, $\frac{1}{25}$, $\frac{1}{8}$ and $\frac{1}{2}$ second or for 1 second, a single pressure of the bulb being all that is required. Time exposures are made by pressing the bulb once to open and again to close the shutter. "Bulb" exposures are made by pressing the bulb to open and releasing the pressure to close the shutter. This shutter has also a finger trigger that may be used instead of the bulb when desired, and is fitted with Iris diaphragm stops, Nos. 4, 8, 16, 32, 64 and 128.

These instruments are fitted with a rack and pinion for focusing by the carefully adjusted scale with which they are fitted. They have a rising and falling front for regulating the amount of sky and foreground in the picture and to assist in the photographing of high buildings. They have a brilliant finder that is reversible so that it may be used for either upright or horizontal pictures, and is fitted with hood and tripod sockets for both vertical and horizontal exposures.

Richness and elegance characterize the finish of these cameras. They are covered with the finest black seal grain leather, all exposed woodwork of selected, piano finished mahogany, and all metal parts are heavily nicked. The shutter is of lacquered brass, and the bellows are of soft red leather—the entire finish of the camera corresponding with its splendid construction and equipment.

The Nos. 5 and 6 Folding Buck-Eyes may be used with glass plates, if desired, by the addition of a Buck-Eye glass plate attachment to one's outfit. These outfits are described in detail on page 30.





Nos. 7 & 8 Folding Buck-Eyes

Use Daylight Loading Film Cartridges for Two, Four,
Six or Twelve Exposures

AND FOCUS ON THE GROUND GLASS

Extra Rapid Rectilinear Lenses, B. & L. Automatic Shutter.
Rising, Falling and Sliding Front. Extra long bellows. Splendid
finish.

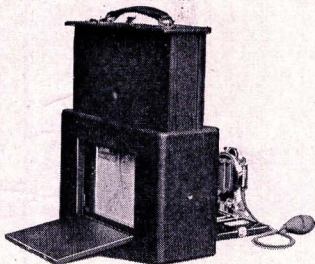
THE PRICE	No. 3	No. 4
	$3\frac{3}{4} \times 4\frac{1}{4}$	4×5
Folding Buck-Eye Camera	\$13.75	\$15.00
Black Sole Leather Carrying Case	1.75	2.00

Nos. 7 & 8 Folding Buck-Eyes

IN DETAIL

THESE instruments combine the advantages of film and plate cameras in that they permit focusing on the ground glass and at the same time use the daylight loading film cartridges, a feature that will be highly appreciated by careful photographic workers.

The method of operation is simple in the extreme. The section of the camera in which the film is enclosed is so constructed that, by the pressure of a button, it may be drawn up as shown in the cut whereupon a spring actuated ground glass automatically takes its place in the focal plane. The picture is now focused on the ground glass just the same as with a glass plate camera; the film carrier is snapped back into position and the exposure made. In addition to the ground glass there is an accurately adjusted focusing scale which may be used if desired.



Showing film carrier raised and ground glass for focusing.

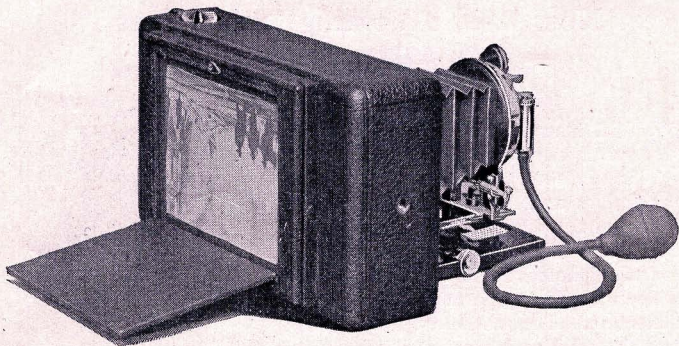


The lens is a Double Combination Extra Rapid Rectilinear of high quality and speed, working at U. S. 4, and the shutter is the famous B. & L. Automatic which makes automatic exposures for $\frac{1}{100}$, $\frac{1}{25}$, $\frac{1}{5}$, $\frac{1}{2}$ or 1 second, and has also the "Bulb" action whereby the shutter opens when the bulb is compressed and closes when it is released, and the time action whereby it opens with one pressure of the bulb and closes with another.

There is a rack and pinion for focusing and the bellows have an extra long draw, permitting the operator to work within 18 inches of the subject to be photographed.

These cameras have brilliant reversible finders and tripod sockets for both upright and horizontal exposures.

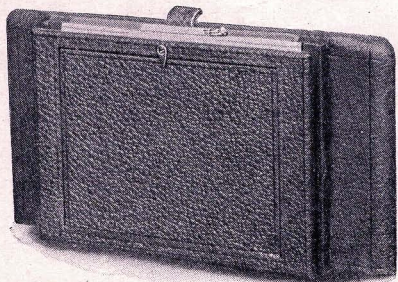
In every detail they are high grade, from the rapid lenses to the rich seal grain leather covering and the polished mahogany bed. They are instruments of which any photographer, professional or amateur, may well feel proud.



Buck-Eye Plate Attachments

THE Nos. 3, 4, 5 and 6 Buck-Eye Cameras become practical plate cameras by the mere addition of a Buck-Eye Plate Attachment to one's outfit. The cuts herewith show one of these attachments

in place on the camera and also detached. This attachment is instantly interchangeable with the "film back" of camera and when it is used the operator may focus either on the ground glass or with the scale. Single aluminum plate holders are used with this attachment that are very light yet safe.



THE PRICE

Plate Attachment for No. 3 or 5 Buck-Eye Camera, $3\frac{1}{4} \times 4\frac{1}{4}$,								
with one single plate holder	\$1.90
Do, for No. 4 or 6, 4×5	1.90
Extra Buck-Eye Single Plate Holders, $3\frac{1}{4} \times 4\frac{1}{4}$40
Do, 4×550

Buck-Eye Carrying Cases

FILM cameras, unlike plate cameras, being self-contained, carrying cases are not an essential and are therefore not included in the price of the instrument. They are nevertheless a convenience especially when one is traveling and make a very desirable addition to one's outfit. All of the Buck-Eye carrying cases are made of the very best black sole leather, strongly sewed, handsomely finished and are furnished complete with clasp and carrying strap.

The illustration herewith shows the style of case furnished for use with the Folding Buck-Eyes, Nos. 3, 4, 5, 6, 7 and 8. Those for the box form cameras No. 1 and No. 2 are equally well made and finished, but of course are not so compact in form.



The illustration gives a good idea of what a compact outfit the Folding Buck-Eye makes, for a dozen exposures of film may be carried inside the camera, the case then containing every requisite for a day's photographic outing—no plates—no plate holders.

THE PRICE

No. 1	Buck-Eye Carrying Case, with strap	.	.	.	\$1.00
No. 2	"	"	"	"	1.20
No. 3 & 5	"	"	"	"	1.00
No. 4 & 6	"	"	"	"	1.20
No. 7	"	"	"	"	1.75
No. 8	"	"	"	"	2.00

Terms

THE prices in this catalogue are net f. o. b. at Rochester, except to recognized dealers.

We recommend that you save time and transportation charges by making your purchases through a dealer.

Direct retail orders must be accompanied by New York draft, Post Office or Express money order covering the full amount of purchase, or will be sent C. O. D. if a deposit of \$1.00 is made to guarantee express charges.

AMERICAN CAMERA MFG. CO.
ROCHESTER, N. Y.