

# ***THE CAMERA BOOK FOR 1941***



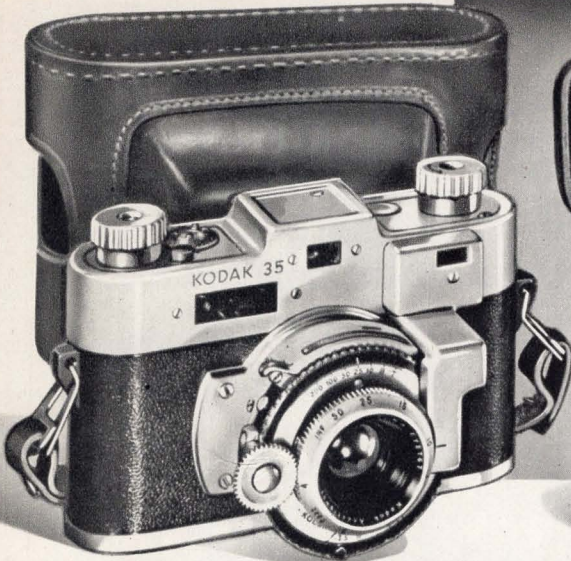
**SEARS, ROEBUCK AND CO.**

SATISFACTION GUARANTEED OR YOUR MONEY REFUNDED

Same Price, Cash or Terms on Eastman and Perflex Cameras. Items marked ♦ shipped from Chicago, Phil. or Los Angeles. See Page 30

# 35 MM. CANDID CAMERAS

Available on Easy Terms... See Page 30



## KODAK 35... Coupled Rangefinder

- f:3.5 Kodak Anastigmat Special lens; extra-fine with color film.
- Shutter speeds, 1/10 to 1/200 sec., time, bulb and delayed action
- Double exposure prevention device

**\$4750**  
f:3.5  
\$5 DOWN  
\$5 MONTHLY

Finest of Kodak's famous 35's—and that means one of America's finest cameras! Construction usually found only in cameras selling for much more. Glorious color pictures—brilliant black and white shots are easy for the "35," with its fine f:3.5 Kodak Anastigmat Special lens. Coupled rangefinder makes positive focusing as simple as sighting your subject, too. Just turn a wheel until the halves of the rangefinder image are in alignment... and the camera is automatically in focus! No turning dials—no settings!

Further deluxe equipment on the Kodak 35 includes double exposure prevention, multi-speed shutter with delayed action (allows photographer to get into picture), and automatic exposure counter. Sockets for flash gun, cable release or tripod. Focuses from 4 ft. to infinity. Black body, size 5 7/8 x 3 3/4 x 3 1/4 in., satin chromium trimmed. Uses 36 or 18-exposure 35mm. color or black and white film; picture size, 1 x 1 1/2 in. Neckstrap, instructions, exposure guides. Takes 32mm filter and lens accessories. Made in U. S. A.

♦ 3 T 6193T—With f:3.5 Anastigmat Lens. Postpaid... **\$47.50**

Lined Brown Bridle Leather Eveready Case for Above

♦ 3 T 6194T—Operate camera from case. Postpaid... **\$3.95**

## Compact, Extra-Speed WELTI

Sells Elsewhere for ~~\$46<sup>50</sup>~~ **\$34<sup>50</sup>** f:2.9  
\$4 DOWN

- Sharp f:2.9 anastigmat lens.
  - Compur shutter; 9 speeds, 1 to 1/300 sec., T. and B.
- Sharp anastigmat lens is equally fine with black and white or color film, fast enough for pictures in very unfavorable light. Sockets for tripod, cable release or flash gun. Shutter release on body eliminates camera movement while shooting. Automatic exposure counter prevents over-winding film. Parallax-correcting optical eye level view-finder. Focuses from 3 1/2 feet to infinity—excellent for portraits. Uses 36 or 18-exposure 35mm. film; picture size, 1 x 1 1/2 in. Aluminum body, size 4 1/2 x 2 3/4 x 1 1/2 in.; Takes 27 mm. lens accessories. Black leather covering. Made in Germany.

♦ 3 T 6156—f:2.9 lens. Shpg. wt., 1 lb. 6 oz. .... **\$34.50**

Lined Brown Bridle Leather Eveready Case

♦ 3 T 6158—Operate camera from case. Shpg. wt., 8 oz. .... **\$3.98**

Printed in U.S.A.  
Copyright 1941 by Sears, Roebuck and Co.



## PERFLEX 55... Versatile!

- Fast f:3.5 or extra-fast f:2.8 Wollensak Vellostigmat lens
- Focal plane shutter: speeds, 1 to 1/1250 second and bulb
- Coupled rangefinder... Exposure meter

**\$4450**  
f:3.5  
\$5 DOWN  
\$5 MONTHLY

When it's sports or action you want, you get it with a Perflex 55... with its fast, sharp lens, its extreme-speed shutter, its coupled rangefinder, and its built-in flash synchronizing switch. Other photography, too—full color, portraits, landscapes. Focuses from 3 ft. to infinity. Uses 36 or 18-exposure 35mm. color or black and white film; picture size 1 x 1 1/2 in. Black plastic and satin chromium body, size 5 3/4 x 3 3/4 x 1 1/2 in. Made in U. S. A. All models Postpaid. Takes 32mm. filter and lens accessories.

♦ 3 T 6238T—Complete lens (twice as fast as f:3.5) ..... **\$44.50**  
♦ 3 T 6239T—With f:2.8 lens (twice as fast as f:3.5) ..... **\$59.50**

Perflex 22—With f:3.5 Lens

Same as 55 above, but with less chromium trim; shutter speeds 1 to 1/1250 sec. and bulb. Postpaid.

♦ 3 T 6104T—Uses color or regular 35mm. film. .... **\$34.50**

Lined Brown Bridle Leather Eveready Case

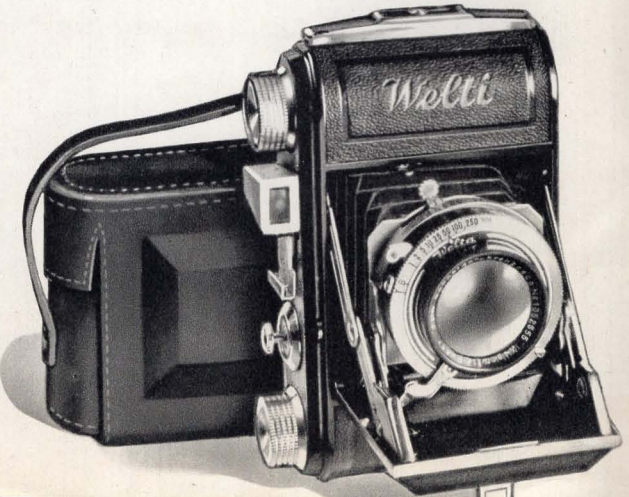
For all above Perflexes. Operate camera from it!

♦ 3 T 6240T—With straps. Postpaid. .... **\$5.00**

Synchronized Flash Gun for Perflex 55

For pictures all around the clock—day or night! Polished reflector; flash unit. Fires perfectly!

♦ 3 T 6241T—(Not for use with Perflex 33). Postpaid. .... **\$6.00**



# PERFECT PICTURES

Night or Day



Flash gun plugs into built-in synchronizer



Compact—easy to carry in coat pocket



Handsome, brown leather eveready case

All Argus Cameras Sold for the Same Price, Cash or Terms

## With Flash Gun and Coupled Rangefinder

- Interchangeable f:3.5 Cintar anastigmat color-corrected lens
- Shutter has 10 speeds, 1/5 to 1/300 second and bulb
- Detachable synchronized flash unit for pictures at night
- Coupled range finder for fast, sure focus every picture!
- Uses 36 or 18-exposure 35 mm. color or black and white film

The camera that makes its own sunlight—that takes pictures 24 hours a day! Now you can take those enjoyable split-second shots of family, children, friends, sporting events, parties—and many more! And the C-3 gives you all the camera versatility you could want—at an amazingly low price! Its fine lens takes regular outdoor or photofood pictures on vivid natural color Kodachrome film as well as black and white!

Lens is interchangeable, permitting use of telephoto lens. Coupled range finder automatically focuses lens. Flash gun plugs into side of camera. Shutter release on body; tripod socket. Focuses from 3 1/2 feet to infinity. Picture size, 1x1 1/2 in. Sturdy metal body, black artificial leather covered; chrome plate trim. Size, 5 1/2 x 2 3/4 x 2 in. Bulb and batteries for flash gun not included. Argus C-2 is the same as C-3 but without flash gun and synchronizer. Both take 41 mm. lens accessories. Made in U. S. A.

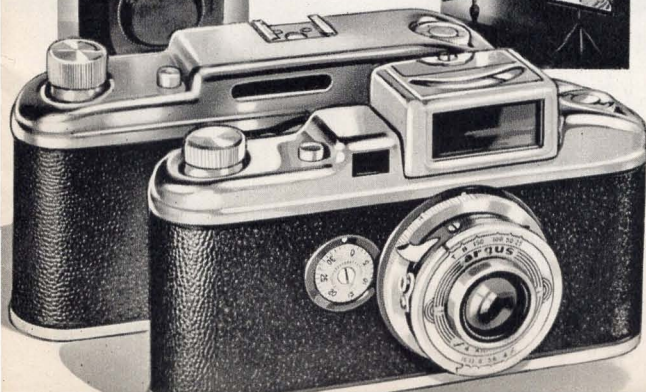
- Argus C-3 With Flash Gun \$30.00
- Argus C-2 Without Flash Gun \$25.00
- ◆ 3 T 6246T—Postpaid... \$30.00
- ◆ 3 T 6108T—Postpaid... \$25.00
- Lined Brown Bridle Leather Eveready Case for C-3, C-2
- ◆ 3 T 6112T—With straps. Camera can be used in case. Postpaid... \$3.39

## ARGUS Model C-3

**\$30<sup>00</sup>** f:3.5 Lens

ONLY \$3 DOWN, \$4 MONTHLY

- Coupled range-finder and synchronized flash gun — regular news-photographer's equipment for pictures any time, any place!
- Sharp, fast f:3.5 lens for regular pictures in almost any light—on COLOR or black and white film



## ← ARGUS Famous Color Camera

**\$25<sup>00</sup>** Color Camera

\$3 DOWN  
\$4 MONTHLY

- With built-in Photo-electric exposure meter for all light conditions!
- f:4 anastigmat lens, specially corrected and with an extra margin of speed for Kodachrome (color) film!

First 35mm. camera designed especially for beautiful, natural color transparencies. Excellent for black and white photographs, too! Shutter speeds, 1/25 to 1/150 second, time and bulb. Has photo-electric exposure meter with calculating dial.

Focuses 3 feet to infinity. Eye-level view-finder; exposure counter. Light weight aluminum body, black grained leather covering, satin chrome trim. Both cameras use 23 mm. lens accessories. Takes 36 or 18 exposures per roll. Picture size, 1x1 1/2 inches.

3 T 6168T—Made in U. S. A. Postpaid... \$25.00

### New Argus Model A-3 Camera

Same as above but with visual extinction meter \$15.00

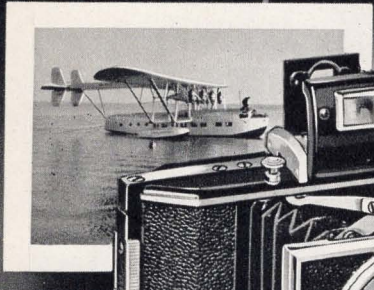
3 T 6169T—Postpaid... \$15.00

Brown Bridle Leather Eveready Case for Above

3 T 6170T—With straps. Postpaid... \$2.29

# CANDID CAMERAS

Inexpensive to Buy . . . to Operate



## KODAK BANTAM

- Excellent Kodak Anastigmat Lens
- Shutter Speeds 1/25 to 1/100 second
- Picture Size—1¼ x 1½ inches on 828 Roll Film—8 Exposures, Regular or Color
- Film Winder Automatically Centers Each Exposure Perfectly

**\$14.00**

F:5.6  
ONLY \$2 DOWN  
SEE PAGE 30

### Ideal for Color Photography

If you are interested in color photography . . . yet cannot afford to spend a great amount for a camera . . . here is the answer to your problem! The Bantam is capable of taking vividly beautiful color pictures . . . in fact, took the prize winning photograph in the 1940 Popular Photography magazine contest! Compact and easily carried. Takes black and white as well as color pictures. Eyelevel viewfinder. Made in U. S. A.

#### With Kodak Anastigmat f:5.6 Lens

Shutter speeds, 1/25 to 1/100 sec., time and bulb. Focuses 4 ft. to infinity. Size 4½ x 2½ x 1½ in.

♦ 3 T 6198T—Cash or Terms, Postpaid . . . . . **\$14.00**

#### With Kodak Anastigmat Special f:4.5 Lens

Finer, faster lens. Shutter speeds 1/25 to 1/200 sec. time and bulb. Shutter release on body. Focuses 2½ ft. to infinity. Metal body, black artificial leather covered.

♦ 3 T 6199T—Cash or Terms, Postpaid . . . . . **\$22.50**

#### Eveready Bridle Leather Case for Above

♦ 3 T 6197T—State Model of Camera. Postpaid . . . . . **\$2.29**

## GRAFLEX

- Equipped with Extremely Fine f:4.5 Kodak Anastigmat Lens
- Focal Plane Shutter—25 Speeds to 1/1000 Sec.
- Picture Size—2¼ x 3¼-inches, Uses Cut Film, Plates, Packs
- Full Vision Ground Glass Focusing. Easy to Use!

**\$81.90**

SERIES "B"

ONLY \$7 DOWN  
AND \$7 MONTHLY  
SEE PAGE 30



GROUND GLASS FOCUSING



COMPACT . . . EASY TO CARRY

### Series B Graflex—Fine American Made Camera

Versatile precision-built instrument! Revolving back permits placing film or plate instantly in position for horizontal or vertical pictures. Focal plane shutter has 25 speeds from 1/5 to 1/1000 second, and time. Black leather cover. Film pack adapter. Range of focus 21 inches to infinity.

♦ 3 T 8226T—Postpaid. Cash or Terms. \$91.00 Value. . . . . **\$81.90**

### Series D Graflex with Interchangeable Lenses

Similar to Series B above but takes larger size negatives. Also has interchangeable lensboard. Built-in lens shade, longer bellows extension. All are Postpaid.

#### Picture Size—3¼x4¼ inches

♦ 3 T 8227T—With 6¼-inch, Kodak Anastigmat f:4.5 lens. \$133 Value. . . . . **\$119.70**

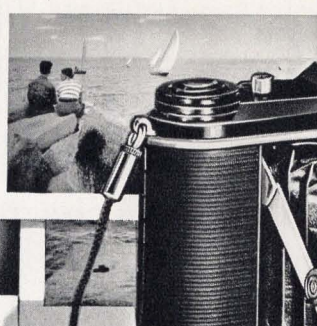
♦ 3 T 8206T—With 6¼-inch, Bausch and Lomb Tessar f:4.5 lens. \$143 Value. . . . . **\$128.70**

#### Picture Size—4x5 inches

♦ 3 T 8279T—With 7½-inch, Kodak Anastigmat f:4.5 lens. \$157 Value. . . . . **\$141.30**

♦ 3 T 8280T—With 6¼-inch, Bausch and Lomb Tessar f:4.5 lens. \$163 Value. . . . . **\$146.70**

4 . . . SEARS, ROEBUCK AND CO.



## AGFA SPEEDEX

- Sharp f:4.5 Anastigmat Lens
- Shutter Speeds ½ to 1/250 second, T and B
- Picture Size—2¼ x 2¼-inch on S-20, 120 or B-2 Roll Film—16 pictures on regular 8-exp. roll.
- Takes 828 size Kodachrome Color Film with Adapter Listed Below

**\$29.00**

ONLY \$3 DOWN  
SEE PAGE 30

### Features of Two Cameras . . . in One

Combines very simple operation with the very maximum of compactness and real picture-taking ability! It's even corrected for beautiful results with color film. Has the compactness of a miniature, but takes grand 2¼ x 2¼-inch pictures . . . really large sized! Shutter speeds, ½ to 1/250 second, time and bulb. Has body shutter release, cable release socket, optical viewfinder. Focuses from 3½-ft. to infinity. Steel body; handsome grained covering; chromium plated trim. Shoulder cord included. 100% American made. Size, 5½ x 3½ x 1½-in.

♦ 3 T 6102T—Cash or Terms. Postpaid . . . . . **\$29.00**

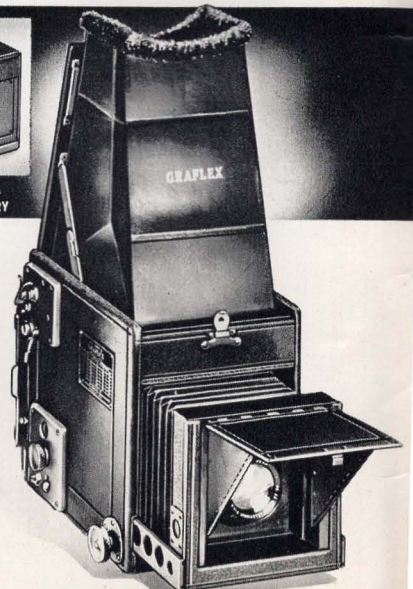
#### Adapter for Kodachrome Film

Instantly enables Speedex to take 828 (Bantam) Kodachrome. No tools necessary. Camera is not altered and can be immediately restored to use regular film.

3 T 8407—Shipping weight, 8 ounces. . . . . **\$3.95**

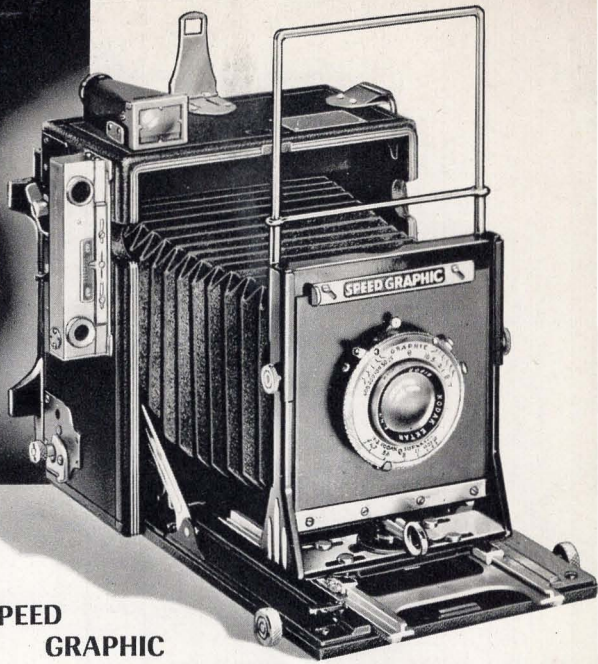
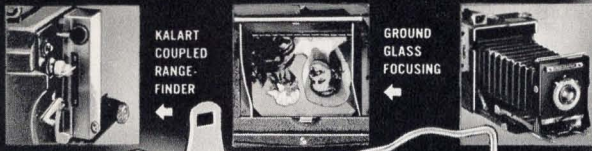
#### Brown Bridle Leather Eveready Case

♦ 3 T 6103T—Shipping weight, 8 ounces. . . . . **\$2.49**



# SPEED GRAPHICS

As Little as \$10 Down on Easy Terms



## SPEED GRAPHIC

### American Made Prize Winning Cameras

Every Speed Graphic is a potential prize winner! Ground glass focusing . . . double extension bellows . . . rising front . . . focal plane and between-the-lens shutters, with 33 speeds from 1 to 1/1000 second, time and bulb. Uses black and white or Kodachrome film . . . uses cut film or pack . . . optical and wire frame viewfinder.

All Speed Graphics on this Page Sold for the Same Price, Cash or Terms. See Page 30

## MINIATURE SPEED GRAPHIC

- Regularly \$117.50 Elsewhere
- Small, Compact and Versatile
- Picture size—2¼x3¼ inches
- Shutter speeds 1 to 1/1000 second

Equipped with Speed Graphic features described above at left. Camera size, 5½x4½x3½ in. 9-in. bellows extension. Double cut film holder included.

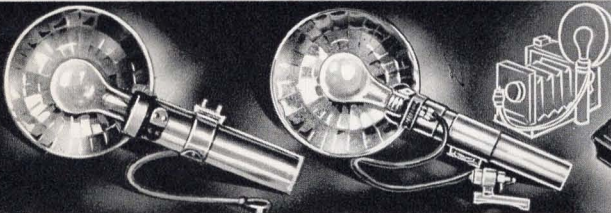
- All are Postpaid.
- ◆ 3 T 8212T—f:4.5 Kodak Ektar lens in Supermatic shutter. (Without rangefinder.) List \$117.50. **\$105.75**
  - ◆ 3 T 8213T—Same as above but with Kalart coupled range-finder installed. List price \$144.50. **\$130.05**
  - ◆ 3 T 8266T—f:3.5 Zeiss Tessar lens in Compur-Rapid shutter. (No rangefinder.) List price \$142. **\$127.80**
  - ◆ 3 T 8267T—Same as 3T8266T but with Kalart Coupled rangefinder installed. List price \$169.00. **\$152.10**
  - Sturdy Compartment Case for 2¼x3¼ Speed Graphics
  - ◆ 3 T 8218T—Holds camera, accessories. Postpaid. **\$5.95**

**\$105.75**  
3 T 8212T  
ONLY \$10 DOWN  
SEE PAGE 30.

- Regularly \$123.50 Elsewhere
  - Famous Anniversary Speed Graphics
  - Drop Front Bed . . . Extra-Long Bellows
  - Picture Size, 3¼x4¼ inches or 4x5 inches.
- Camera masterpieces . . . the favorite of newspaper photographers and other professionals. With new Press-Focus button.

- 3¼x4¼-inch Size—With 12-inch Bellows. Postpaid.
- ◆ 3 T 8234T—With f:4.7 Kodak Ektar lens in Supermatic shutter. List price \$123.50. **\$111.15**
  - ◆ 3 T 8288T—With Kalart Coupled Rangefinder. List, \$150.05. **\$135.45**
- 4x5-inch Size—With 13½-inch Bellows. Postpaid.
- ◆ 3 T 8238T—With f:4.7 Kodak Ektar lens in Supermatic shutter. List Price \$123.50. **\$111.15**
  - ◆ 3 T 8289T—With Kalart Coupled Rangefinder. List, \$150.05. **\$135.45**
- Compartment Case for above Speed Graphics
- ◆ 3 T 8211T—For camera, accessories. Postpaid. **\$5.95**

**\$111.15**  
3 T 8234T  
ONLY \$10 DOWN  
SEE PAGE 30.



## Mendelson Speedguns for Graphics

For Miniature Speed Graphic. Operates on focal plane shutter only, same price, Cash or Terms. Postpaid.

- ◆ 3 T 8239T. **\$12.90**

"C" DeLuxe Junior Same as above but with magnetic tripper for front shutter. Cash or Terms. State whether for Compur or Supermatic shutter. Postpaid.

- ◆ 3 T 8237T. **\$19.50**

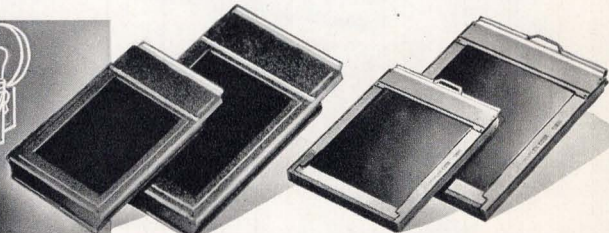
Items marked ◆ shipped from Chicago, Philadelphia, Los Angeles. See Page 30 for details.

Fits only 3¼x4¼ and 4x5 Speed Graphics. Flash is synchronized with front shutter. State for Compur or Supermatic Shutter. Sold for the same price, Cash or Easy Terms. Postpaid.

- ◆ 3 T 8200T. **\$16.50**

Rangefinder Bracket For all Speed Graphics. Encircles and protects rangefinder and gives mounting for speed gun. Has rangefinder eyepiece. Same price Cash or Terms. Postpaid.

- ◆ 3 T 8484T. **\$1.35**



## Pack Adapters

Genuine; Made by Graflex.

- 2¼x3¼-inch Size
- ◆ 3 T 8232—For Speed Graphic. Postpaid. **\$4.28**
  - ◆ 3 T 8233—For Graflex B. Postpaid. **\$4.95**
- 3¼x4¼-inch Size
- ◆ 3 T 8277—For Speed Graphic. Postpaid. **\$3.15**
  - ◆ 3 T 8275—For Graflex D. Postpaid. **\$4.95**
- 4x5-inch Size
- ◆ 3 T 8278—For Speed Graphic. Postpaid. **\$3.60**
  - ◆ 3 T 8276—For Graflex D. Postpaid. **\$5.85**

## Cut Film Holders

Graflex Made. Hold two films.

- 2¼x3¼-inch Size
- ◆ 3 T 8235—For Speed Graphic. Postpaid. **\$2.48**
  - ◆ 3 T 8236—For Graflex B. Postpaid. **\$3.15**
- 3¼x4¼-inch Size
- ◆ 3 T 8271—For Speed Graphic. Postpaid. **\$2.48**
  - ◆ 3 T 8273—For Graflex D. Postpaid. **\$3.38**
- 4x5-inch Size
- ◆ 3 T 8272—For Speed Graphic. Postpaid. **\$2.48**
  - ◆ 3 T 8274—For Graflex D. Postpaid. **\$3.60**

# MARVEL-FLEX REFLEX CAMERA

The Quality and Features of a \$65 Camera



GROUND GLASS  
VIEWFINDER  
FOR WAIST-  
LEVEL  
FOCUSING



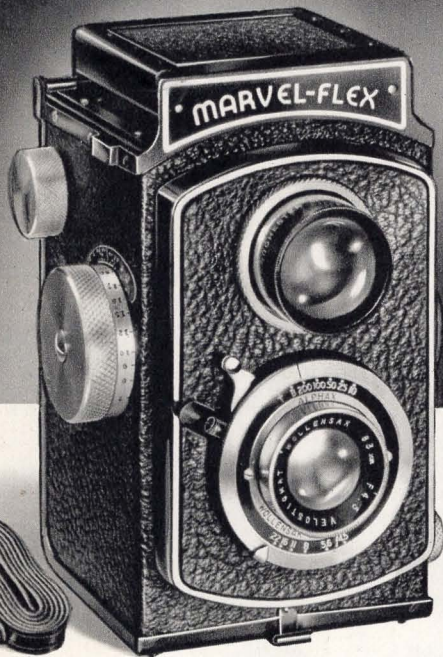
EYE-LEVEL  
VIEWFINDER  
FOR ACTION  
PICTURES  
AND SPORTS



WITH  
MARVEL-FLASH  
SYNCHRONIZER  
FOR ALL-  
AROUND USE



EVEREADY  
LEATHER  
CARRYING  
CASE WITH  
NECK STRAP



Actual size black and white picture shown above.  
Also takes Kodachrome color pictures with adapter.

**\$29<sup>75</sup>**  
f: 4.5 lens

CASH

ONLY \$3 DOWN

See Page 30

## Candid Shots, Portraits, Sports . . . Take Beautiful Natural Color Transparencies on Kodachrome Film!

- Fast f:4.5 or extra-fast f:3.5 Wollensak Velostigmat anastigmat lenses for sharp pictures in black and white or color. Brilliant f:3.2 viewing lens and focus magnifier.
- Entire lens board moves rather than front lens element only, insures maximum sharpness.
- Wollensak Alpha shutter with speeds 1/10 to 1/200 second, time and bulb.
- All metal body. • No plastics used. Adds years of usefulness to the Marvel-Flex.
- Folding top opens and closes with ONE FINGER pressure. Eye-level sports viewfinder.

Natural expressions are easy to capture with the Marvel-Flex! Composition is easy, too—you can keep your subject within the picture area . . . and the Marvel-Flex' fast, accurate focusing makes picture sharpness a certainty!

When you add just a couple of accessories—a Kodachrome adapter and flash gun (see at right)—new thrills await you—transparencies in glowing natural color, or vivid, action-filled flash shots! You've got the equipment in this one camera for full enjoyment of photography's limitless fun!

Smooth-operating focusing knob on side of camera (not front) focuses instantly. You see your picture actual size, right side up, before, during and after exposure. Focus magnifier for extreme sharpness. Front of hood folds down to provide eyelevel finder when following fast action. F:3.2 viewing lens. Shutter ranges from still life and portrait speeds to fast action.

Sockets for tripod, cable release and flash gun. Film window has built-in cover. Camera size, 5 3/4 x 4 1/4 x 3 1/2 in.; black artificial leather covered; black enamel and satin-finish metal trim.

6 . . . SEARS, ROEBUCK AND CO.

Uses S-20, 120, B-2 black and white roll film; takes 12, 2 1/4 x 2 1/4 in. pictures to roll. Instructions included. Made in U.S.A. Shipping weight, 2 lbs. 8 oz. f:4.5 model uses 28mm. lens accessories; f:3.5 uses 33mm.

3 T 6440—With f:4.5 lens. . . . . \$29.75

3 T 6441—With faster f:3.5 lens. Nearly twice as fast as f:4.5. Greater picture range; well worth the difference. . . . . \$34.75

### MARVEL Speed Flash Synchronizer for Marvel-Flex

Synchronizes shutter and flash. With reflector, battery in case, synchronizing plunger and attachment bracket.

3 T 8419—Shipping weight, 1 lb. 4 oz. . . . . \$7.95

### Adapter for Using Kodachrome (Color) Film

For using 828 (Bantam) color or black and white film.

3 T 8408—Easily installed or removed. Shpg.wt., 8 oz. . . . . \$3.95

### Brown Bride Leather Eveready Case for Marvel-Flex

3 T 6442—Lined; with straps. Shipping wt., 8 oz. . . . . \$3.95

◆ Means shipped from Chicago, Phila., or Los Angeles. See Page 30.

# WORLD-FAMOUS REFLEX CAMERAS

Sold at Sears on Easy Terms With No Carrying Charge



**\$69<sup>50</sup>**  
f:4.5 lens  
\$6 DOWN  
\$6 MONTHLY

Same Price, Cash or Terms on These World-Famous Cameras. For Easy Terms, See Page 30.

## Rolleicord Twin-Lens Reflex Equipped With Famous Zeiss Lenses

- Diamond-sharp f:4.5 or f:3.5 Zeiss Triotar lenses
- Compur shutters, 8 speeds 1 to 1/300 sec. fine and bulb
- Take 12 pictures 2¼x2¼ in. on S-20, 120 or B-2 film; also uses color film with Kodachrome adapter
- Focus Magnifier . . . Special eye level Sport viewfinder

Trust to Sears to bring you the finest at lower prices! Rolleicords are famous the world over . . . known and respected for their beautifully precise construction, fine quality lenses and shutters, and excellence in every detail that insures outstanding pictures! And you save at Sears!

With the Rolleicord's reflex focusing, you need never have a picture out of focus—and with the big, picture-size ground glass top that shows picture right side up, just as it will be on the print, you need never have a picture poorly composed! Versatile, too . . . focuses from 3½ feet to infinity; has sockets for flash gun . . . takes Kodachrome color transparencies 1½x1¼ in. with adapter listed below. Black leather covered metal body, size 5½x5¾x3¾ in. With instructions, neckstrap, cable release. Made in Germany. Shpg. wt., 2 lbs. 4 oz.

- ◆ 3 T 6148T—With f:4.5 lens. \$76.00 Value. . . . . **\$69.50**
- ◆ 3 T 6113T—With f:3.5 lens; twice as fast as f:4.5; \$98.50 Value. . . . . **\$89.50**

### Lined Brown Leather Eveready Case

- ◆ 3 T 6149T—With straps. Shipping weight, 8 oz. . . . . **\$7.65**

### Color Film Adapter for Rolleicord

Take beautiful color transparencies on 828 (Bantam) Kodachrome with these fine Zeiss lenses! Easily installed or removed. No tools necessary, no damage to camera.

- ◆ 3 T 8483—Shipping weight, 8 ounces. . . . . **\$4.95**



IMAGE APPEARS FULL-SIZE AND UPRIGHT IN VIEWFINDER

**\$135<sup>00</sup>**  
f:3.5 lens  
\$12.50 DOWN, \$10 MONTHLY

## World-Renowned Rolleiflex Standard With Zeiss Tessar Lenses

- With f:3.5 Zeiss Tessar—the famous prize-winning lens!
- Compur-Rapid shutter, speeds 1 to 1/500 sec. T and B.
- Takes 12 pictures 2¼x2¼ in., on S-20, 120 or B-2 film; also full color transparencies with Kodachrome adapter
- Double-action winding handle is fast; prevents double exposures!

Positive reflex focusing! Focus magnifier, eye-level sighting adjustment. Focuses 3½ ft. to infinity; flash gun may be attached. Leather covered metal body, 5½x3¾x3¾-in. Instructions, neck-strap, cable release. Made in Germany.

- ◆ 3 T 8207T—Shpg. wt., 2 lbs. 4 oz. \$150.00 Value. . . . . **\$135.00**

### Brown Bridle Leather Eveready Case

- ◆ 3 T 8304T—With straps. Shpg. wt., 10 oz. . . . . **\$9.00**

### Color Film Adapter for Rolleiflex

- ◆ 3 T 8482—Uses 828 (Bantam) Kodachrome film. Shipping weight, 8 ounces. . . . . **\$4.95**

## American-Made National Graflex Famous Miniature Reflex—At a Saving!

- Brilliantly sharp f:3.5 Bausch and Lomb Tessar Lens—Interchangeable
- Focal plane shutter from 1/30 to 1/500 second; also bulb
- Takes 10 pictures, size 2½ x 2½ inches on S-20, 120 or B-2 film
- Automatic film-measuring meter . . . built-in micro-focuser
- Equipped with single lens for both viewing and taking picture

Just a handful in size—but has all the dependability and superb picture taking qualities of the larger Graflexes! Produces sharp, full-bodied, clean-cut negatives. Ever ready for instant action. Picture-size focusing ground glass enables you to see your picture right side up, to the very instant of exposure; micro-focuser assures positive focus. Has built-in exposure guide, automatic film measuring device and lock that holds film taut for each exposure. Focus from 3½ feet to infinity. Eight shutter speeds. Lens is interchangeable for use of telephoto or other accessory lenses. Size 5½x3¾x2½ inches. Instruction booklet included. Made in America.

- ◆ 3 T 8210T—Regularly sells for \$87.50. Shipping wt., 3 lbs . . . . . **\$78.75**

### Lined Brown Bridle Leather Eveready Case for National Graflex

- ◆ 3 T 8209T—Camera can be operated from case. With straps. Wt., 1 lb. . . . . **\$5.95**

### K2 (Yellow), G (Orange), A (Red) Filters for National Graflex

- ◆ 3 T 8298T—Mounted. State color choice. Shipping weight, 2 oz. . . . . **\$3.50**

- ◆ 3 T 8299T—Lens Shade. Keeps unwanted light from striking lens. Shipping weight, 4 ounces. . . . . **1.50**

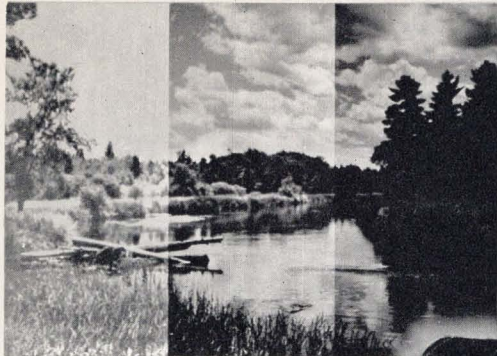
**\$78<sup>75</sup>**  
Cash  
ONLY \$7 DOWN  
\$7 MONTHLY



OVER-EXPOSED

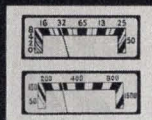
CORRECTLY EXPOSED

UNDER-EXPOSED



# MARVEL METERS

Similar to \$15 and \$25 Models



2 SCALES FOR HIGH OR LOW LIGHT CONDITIONS



VIEWFINDER SHOWS EXACT SCENE COVERED



COMPACT—FITS IN PALM OF HAND



VEST-POCKET SIZE AS EASY TO CARRY AS CIGARETTES



COMPUTING DIAL ON BACK NEEDS ONLY ONE SETTING

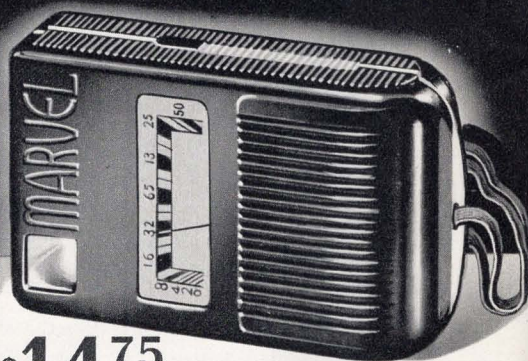


All items marked ♦ shipped from Chicago, Philadelphia or Los Angeles. See Page 30.

**\$7.69**

Similar in Quality to Meters Selling for

~~\$15~~



**\$14.75**

Similar in Quality to Meters Selling for

~~\$25~~

## MARVEL Standard Meter

- Valuable for Still Pictures; Especially Valuable for Movies and Color. Accurate readings even in poor light
- Range from 1.4 to 1000 Candles per Square Foot. Extremely sensitive; for Indoor or Outdoor Use.
- Genuine Sapphire Bearings; Long-lived Alnico Magnet.
- Exclusive of Sears! Sensitive Photo-Electric Cell Meter—Sensationally Low Priced for this Quality.

Extra reliable—extra sensitive—specially low priced. Modern streamlined design . . . fits in the palm of your hand. Measures light from picture subject and converts it into terms of shutter speeds and lens openings. Helps prevent spoiled pictures . . . saves film. Made in U. S. A.

Computing dial requires only one setting. Film speeds from 1 to 250 Weston (under Weston license); lens stop openings from f:1.5 to f:32. Shutter speeds from 1/1000 to 16 seconds. Zero adjuster for constant accuracy. 2 1/2 x 2 1/8 x 1-inch Bakelite body. Instructions, film speed tables, neck cord included.

3 T 6250—Shipping weight, 12 ounces. . . . . **\$7.69**

Plush Lined Eveready Leather Case. Made of rugged bridle leather. Meter can be operated from it. . . . . **89c**

3 T 6251—Shipping weight, 6 ounces. . . . . **89c**

## MARVEL De Luxe Meter . . . Extra Fine

- No other meter has viewfinder to Show Area Covered by Meter! Registers Light Only From Area in Viewfinder in order to give you true Accuracy in Reading!
- Sold only by Sears! Amazing Sensitivity Range, 1/10 to 1650 Candles per Square Foot. For indoor or outdoor use.
- Two Scales, for High or Low Light—for Extra Certainty!
- Easy-to-read Oversize Exposure Computing Dial.

One of the greatest photo-electric cell exposure meter values in America! EXCLUSIVE features—plus a sensitivity scale matched only by highest priced meters. So supersensitive, you can take readings in dim indoor light as well as in brightest sunlight. Simple in operation—merely set your camera to correspond with meter readings. Light scales can be shifted while reading. Genuine sapphire bearings and Alnico magnet. Film speeds 1 to 500 Weston; lens stop openings from f:1.5 to f:32; shutter speeds from 1/1000 to 32 sec. 2 1/2 x 4 1/4 x 1 1/4-in. black Bakelite case. Satin chrome trim. Instructions, film speed tables, neck cord included.

3 T 6217—Shipping weight, 1 pound. . . . . **\$14.75**

De Luxe Fine Bridle Leather Plush Lined Case . . . . . **\$1.39**

3 T 6884—Shipping weight, 6 ounces. . . . . **\$1.39**

See Page 30 for Easy Terms



## G-M Jr. Exposure Meter

**\$5.95** Low priced photo-electric meter. Accurate for outdoor use. Sensitivity range, 2 to 1000 ft. candles. Jeweled bearings; Alnico magnet. Simplified single-setting computing dial. Sturdy bakelite body, size 2 1/4 x 2 1/2 x 1 in. Made in U.S.A. With instructions, film speed tables.

3 T 6221—Shpg. wt., 10 oz. . . . . **\$5.95**

Bridle Leather Eveready Case . . . . . **89c**

3 T 6222—Shpg. wt., 4 oz. . . . . **89c**



## DeJur Critic Meter

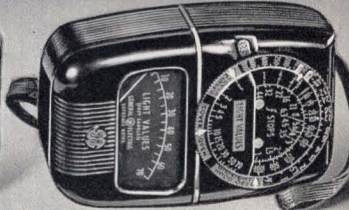
**\$13.95** Single dial gives both light readings and camera settings at the same time! Evenly spaced numbers on light scale. Shutter speeds, 60 to 1/2000 sec. Film speeds, 3 to 800; stops, f:1 to f:32. Zero adjuster.

♦ 3 T 8286T—Postpaid. . . . . **\$13.95**

Lined Bridle Leather Case . . . . . **\$1.49**

♦ 3 T 8287T—Postpaid. . . . . **\$1.49**

Due to standard practice, DeJur and G-E meters are same price, cash or terms.



## G-E 3 in 1 Meter

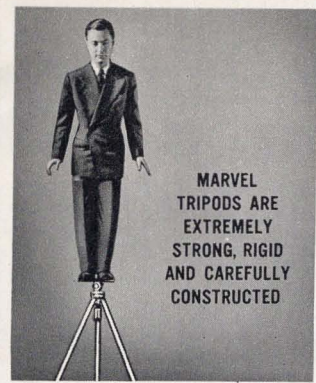
**\$21.00** Three sensitivity ranges; adaptable to printing and enlarging! Film speeds to 800; stops, f:1 to f:44; shutter speeds, 100 to 1/2500 sec. With neck cord and 112-page data book. Instructions. Made by General Electric.

♦ 3 T 6847T—Postpaid. . . . . **\$21.00**

Lined Bridle Leather Case . . . . . **\$1.49**

♦ 3 T 6853T—Postpaid. . . . . **\$1.49**





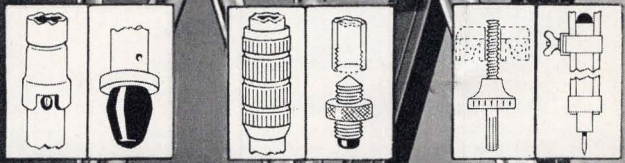
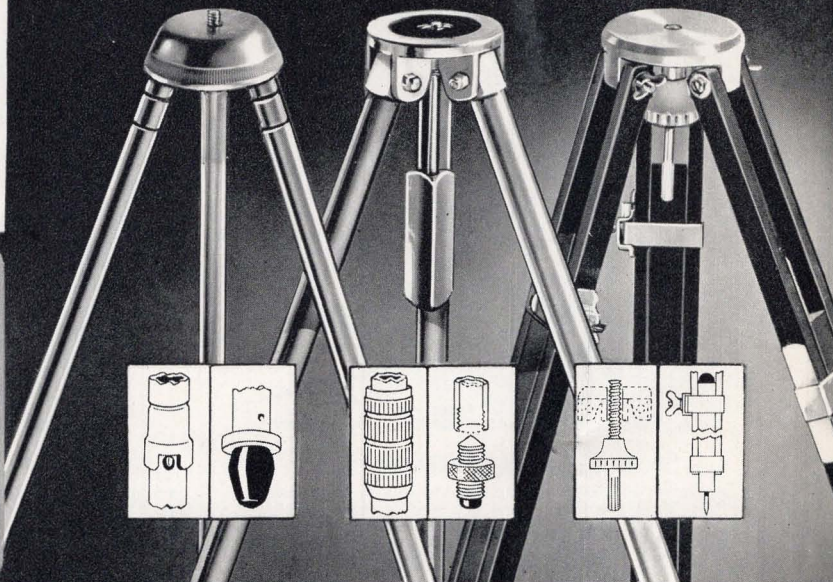
MARVEL  
TRIPODS ARE  
EXTREMELY  
STRONG, RIGID  
AND CAREFULLY  
CONSTRUCTED

# MARVEL TRIPODS

Equal Quality Elsewhere Costs You 1/3 More



## Royal De Luxe



### Royal Tripod

Light and compact...yet strong enough to hold the heaviest still or movie cameras with ease. Legs lock at any position, will not slip or spread. Reversible rubber and pointed feet. Extends to 60 in. Length closed, 26 in. Duralumin construction, anodized finish. Shpg. wt., 4 lbs.  
**◆ 3 T 8439—Tripod only... \$13.50**

**\$13.50**

Tripod Only

### De Luxe Pan and Tilt Head

One-hand control for both tilt and panoramic operation. Instantaneous camera lock.  
**◆ 3 T 8440—Shpg. wt., 1 lb. 2 oz. ... \$6.75**

### Tripod and Tilt Head

Buy as a combination! Save \$2.49! Shpg. wt., 5 lbs. 8 oz.  
**◆ 3 T 8441..... \$17.78**

### Chromium Tripods

No better made at this price! Sturdy enough to support the heaviest camera! Strong seamless brass legs (much more rigid than most tripods). Patented leg latch—a twist and it's locked—saves fingers. Removable rubber tips, pointed feet. Fit all cameras with domestic tripod sockets, as well as pan and tilt attachments shown at bottom of page. Save money—buy a Marvel! Shpg. wt., each, 1 lb. 10 oz.  
**\$2.49**  
 And Up

Cat. No.	Sec-tions	Closed In.	Open In.	Price Each
3 T 8431	3	18 3/4	47 3/4	\$2.49
3 T 8432	4	17 3/4	54 3/4	3.49

### De Luxe Tripods

Ideal for movies or stills... for those who want the best! Rugged, rigid, handsome. Extra heavy solid brass, satin chrome plated. A single turn locks legs at any height. Reversible spike and rubber tipped feet. Pan head, same as MARVEL pan head below. Fits all still and movie cameras, 2-Section Tripod: 60-in. extended 32-in. closed.  
**3 T 8433—Shpg. wt., 6 lbs..... \$5.95**  
 With Pan Head.  
**3 T 8435—Shpg. wt., 7 lbs.... \$8.45**  
 3-Section Tripod, 60-in. extended, 24-in. closed.  
**3 T 8434—Shpg. wt., 6 lbs... \$7.45**  
 With Pan Head.  
**3 T 8436—Shpg. wt., 7 lbs... \$9.95**

**\$5.95**

2-Sec. Tripod

### Wood Tripod

Similar to \$5.95 quality elsewhere. A specially low price for this fine quality MARVEL Tripod. Has machined aluminum head—will not rust. Double extension legs of selected seasoned hardwood with reversible spike and rubber tips. Rich black finish. Vibrationless. Legs lock solidly at any height up to 5 feet. 34 in. long when closed. Shipping weight, 5 pounds.  
**3 T 06837..... \$3.98**

**\$3.98**



### Cranking Pan Head

A real Hollywood pan head for your 8 or 16 mm. camera! Worm gear drive; top cranks through 360 degree turn—without vibration. Super-Smooth in operation. Tilts 160 degrees with pan handle. Chrome finish. Shpg. wt., 5 lbs.  
**◆ 3 T 8429..... \$6.98**

**\$6.98**

### MARVEL Pan Head

Has a two-way action—for angle shots or for full-circle panoramas. Ruggedly made yet smooth-working—locks instantly and securely in any position. No vibration. For all still or movie cameras. Satin chrome finish.  
**3 T 6836—Shpg. wt. 1 lb..... \$2.59**

**\$2.59**

### Pro-Tilt Head

Professional style—extra strong to hold the heaviest still or movie cameras. Smooth operating; full up or down tilt; camera can be turned in complete circle. Genuine light weight duralumin; black crackle enamel finish.  
**◆ 3 T 8437—Shpg. wt. 3 lbs... \$6.95**

**\$6.95**

### Tilt Table

Mounts on tripod. Holds larger cameras firm for angle shots to full 90°. Sliding brackets. Standard bushing; tripod socket screw. Solid aluminum, crackle finish. Shpg. wt., 3 lbs.  
**◆ 3 T 8438..... \$4.95**

**\$4.95**

All Above Pan and Tilt heads and Camera Table will fit any of above tripods.

# MARVELCHROME .. MARVELPAN FILMS

None Finer at Any Price . . . Satisfaction Guaranteed

FOR OUTDOOR USE



**25c** Quality Elsewhere **18c** S-27 Size In Lots of 4 or More

## Sears MARVELCHROME Film

As fine as any for outdoor use! Equal to films selling for 25c to 55c! American made by one of the world's largest manufacturers. Weston rating, 24 daylight, 16 tungsten. Orthochromatic, has wide latitude to allow for exposure errors; anti-halo backing, fine grained. An ideal film for general use.

Catalog Number	Film Number	Film Size, Inches	Exp.	Per Roll	Wt., each	2 or 3	Shgp. wt., 2 or 3	4 or more
3 T 6767	S-27 (127)	1 9/16 x 2 1/2	8	206	3 oz.	19c ea.	4 oz.	18c ea.
3 T 6768	S-20 (120)	2 1/4 x 3 1/4	8	256	3 oz.	24c ea.	4 oz.	23c ea.
3 T 6769	S6-20 (620)	2 1/4 x 3 1/4	8	256	3 oz.	24c ea.	4 oz.	23c ea.
3 T 6770	S-16 (116)	2 1/2 x 4 1/4	8	306	4 oz.	28c ea.	5 oz.	28c ea.
3 T 6771	S6-16 (616)	2 1/2 x 4 1/4	8	306	4 oz.	28c ea.	5 oz.	28c ea.
3 T 6716	S-22 (122)	3 1/4 x 5 1/2	6	476	4 oz.	46c ea.	5 oz.	45c ea.
3 T 6717	S-30 (130)	2 7/8 x 4 7/8	6	376	4 oz.	36c ea.	5 oz.	35c ea.
3 T 6718	S-18 (118)	3 1/4 x 4 1/4	6	376	4 oz.	36c ea.	5 oz.	35c ea.

See Sears Big General Catalog for Special Photo-Finishing Bargain on Marvelchrome and Marvelpan Films.

FOR INDOOR USE

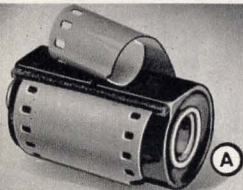


**30c** Quality Elsewhere **24c** S-27 Size In Lots of 4 or More

## Sears MARVELPAN Film

We consider Marvelpan to be the finest roll film you can buy, regardless of price. For fine pictures indoors—for extra beauty outdoors! Its brilliant, balanced panchromatic emulsion gives you photographs of sparkle and snap—and it's so finely grained that enlargements up to 30 diameters (after proper development) can easily be made. Easy to use with flood or flash bulbs. Weston rating, 50 daylight, 32 Tungsten. American made by one of the world's largest manufacturers!

Catalog Number	Film Number	Film Size, In.	Exp.	Per Roll	Shgp. wt., each	2 or 3	Wt., 2 or more	4 or more
3 T 6700	S-27 (127)	1 9/16 x 2 1/2	8	266	3 oz.	25c ea.	4 oz.	24c ea.
3 T 6701	S-20 (120)	2 1/4 x 3 1/4	8	306	3 oz.	28c ea.	4 oz.	28c ea.
3 T 6702	S6-20 (620)	2 1/4 x 3 1/4	8	306	3 oz.	28c ea.	4 oz.	28c ea.
3 T 6703	S-16 (116)	2 1/2 x 4 1/4	8	346	4 oz.	33c ea.	5 oz.	32c ea.
3 T 6704	S6-16 (616)	2 1/2 x 4 1/4	8	346	4 oz.	33c ea.	5 oz.	32c ea.



## Eastman 35 mm. and Bantam

**Kodachrome.** Brilliant natural color film. Price includes processing and mounting in 2x2 in. mounts. All Postpaid.

- 3 T 6726—18 exp. 35 mm. day..... \$2.50
- 3 T 6727—18 exp. 35 mm. Tung..... 2.50
- 3 T 8348—8 exp. Bantam (828) day... 1.35
- 3 T 8349—8 exp. Bantam Tung..... 1.35
- Panatomic-X.** Very fine grain. Weston, 24 daylight, 16 Tungsten. Postpaid.
- 3 T 6750—36 exposures..... 95c
- 3 T 6747—18 exposures..... 60c
- 3 T 6733—8-exposure Bantam (828)..... 25c

## Agfa 35 mm. Cartridges

Finopan is a film of extremely fine grain; Superpan Supreme combines high speed and fine grain; Ultra-Speed Pan is the fastest 35 mm. film made. Shgp. wt., each, 3 oz.

- Finopan**—Weston, 24 Daylight, 16 Tungsten.
- 3 T 6789—36 exposures..... 89c
- Superpan Supreme**—Weston 50 Day. 32 Tung.
- 3 T 6787—36 exposures..... 89c
- 3 T 6256—20 exposures..... 59c
- Ultra-Speed Pan**—Weston 100 Day. 64 Tung.
- 3 T 6792—36 exposures..... 89c
- 3 T 6258—20 exposures..... 59c



## Agfa 55-ft. and 27 1/2-ft. 35 mm. Rolls for Reloading

Buy your 35 mm. film in bulk—save tremendously! Sears prices on 55-ft. loads bring you 10 rolls for a little over the regular price for 3! Notched every 5 1/2 ft. for 36-exposure loads. Same fine quality as films above. Guaranteed fresh! See bulk film cartridge loader on page 26.

- 55-ft. Reloads**—Shgp. wt., each, 10 oz.
- Makes ten 36-exposure loads.
- 3 T 8345—Superpan Supreme..... \$3.15
- 3 T 8346—Ultra-Speed Pan..... 3.15
- 3 T 8347—Finopan..... 3.15
- 27 1/2-ft. Reloads**—Shgp. wt., each, 1 lb.
- Makes five 36-exposure loads.
- 3 T 8339—Superpan Supreme..... \$1.59
- 3 T 8343—Ultra-Speed Pan..... 1.59
- 3 T 8344—Finopan..... 1.59

## Agfa Film Packs

Super Plenachrome is a high-speed orthochromatic film, for outdoor, sports and pictorial work. Superpan Supreme is a high-speed panchromatic for portraits, flash or flood, indoor or outdoor pictures. Very fine grain, gives brilliant negatives.

Super Plenachrome (12 Exp.)			
Cat No.	Size, in.	Shgp. wt.	Per Pack
3 T 6719	2 1/4 x 3 1/4	5 oz.	\$0.63
3 T 6720	3 1/4 x 4 1/4	7 oz.	.98
3 T 6721	4 x 5	9 oz.	1.17

Superpan Supreme (12 Exp.)			
Cat No.	Size, in.	Shgp. wt.	Per Pack
3 T 6707	2 1/4 x 3 1/4	5 oz.	\$0.63
3 T 6708	3 1/4 x 4 1/4	7 oz.	1.08
3 T 6709	4 x 5	9 oz.	1.26

## Cut Films

Agfa Triple-S Pan for speed; Eastman Portrait Pan for portraits, general work; Agfa Super Plenachrome, Eastman Super Ortho for portraits, outdoors, etc. State Catalog No., film.

Triple-S or Portrait Pan	Box of 12	Film Size, in.	Wt. oz.	Super Ortho or S.S. Plenachrome	Box of 12
3 T 8367	\$0.45	2 1/4 x 3 1/4	4	3 T 8362	\$0.39
3 T 8369	.69	3 1/4 x 4 1/4	6	3 T 8364	.59
3 T 8371	.89	4 x 5	9	3 T 8366	.79
3 T 8380	1.39	5 x 7	12	3 T 8379	1.29

## Eastman Kodachrome Cut Film

For transparencies in full natural color. State choice of Daylight or Type B (for artificial light), 6 in box. All Kodachrome Postpaid. Processing included. ♦ Shipped from Chicago, Phil. or Los Angeles. See Page 30.

- ♦ 3 T 8381 ♦ 3 T 8383 ♦ 3 T 8361
- 2 1/4 x 3 1/4 in. \$3.90 3 1/4 x 4 1/4 in. \$5.25 4 x 5 in. \$6.25

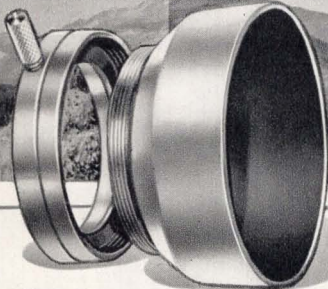
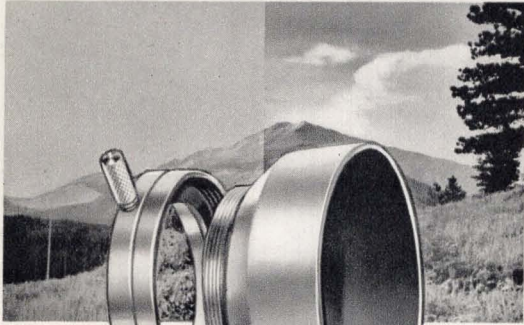


# MARVEL LENS SHADES AND FILTERS

For More Beautiful Indoor and Outdoor Pictures

WITHOUT FILTER

WITH FILTER



## MARVEL Lens Shade and Filter Holder

- Quality and features comparable with shades selling elsewhere for up to \$2.50!
- Perfect filter alignment; screw for easy adjustment and firm grip on lens mount.
- Rigid, extra-thick yet lightweight aluminum; non-reflecting black flock lining. Satin outside finish.

Here is the lens shade buy of the year! Simpler—easier to handle—more positive than many other higher priced units! You'll be a smart cameraman if you use a lens shade on every picture you take! It prevents stray light from striking the lens, enables you to take pictures at almost any angle from the light source; makes possible unusual effects, and gives your pictures extra richness and depth! Can be used with or without filters at right. Satin aluminum finish. Measure outside diameter of lens barrel. Shipping weight, each, 3 oz.

- 3 T 8420—Size A. For 23mm. ( $\frac{7}{8}$  in.) to 29mm. ( $1\frac{1}{4}$  in.) lens.
  - 3 T 8421—Size B. For 26mm. (1 in.) to 31mm. ( $1\frac{1}{4}$  in.) lens.
  - 3 T 8422—Size C. For 30mm. ( $1\frac{1}{8}$  in.) to 36 mm. ( $1\frac{1}{2}$  in.) lens.
  - 3 T 8423—Size D. For 36mm. ( $1\frac{1}{2}$  in.) to 43mm. ( $1\frac{1}{2}$  in.) lens.
- Any one of above for only . . . . .98c

**98c** Each

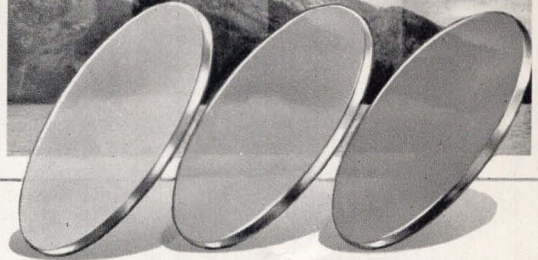
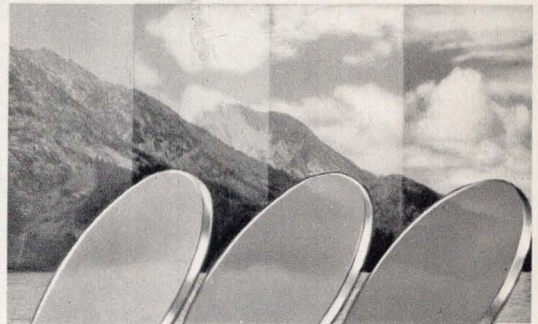
Any Size

WITHOUT FILTER

YELLOW FILTER

ORANGE FILTER

RED FILTER



## MARVEL Ground, Polished Filters

- Quality comparable to filters selling as high as \$2.50 elsewhere!
- Made in 4 colors or polaroid for every purpose.

Do not confuse these quality filters with the many inferior imitations. Guaranteed optically ground and polished. Four colors: Yellow for use with pan or ortho films—gives clouds and normal contrast; Green for clouds and normal contrast on pan film only; Orange for extra contrast, dark skies, very white clouds; Red for black skies, white clouds, moonlight and infrared effects. State color. Shpg. wt., each, 3 oz.

- 3 T 8424—31.5 mm. Fits shades A, B, C at left. . . . .98c
- 3 T 8425—42 mm. Fits shade D at left. . . . .98c

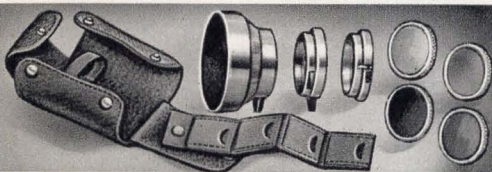
**98c** Each

Any Color

### MARVEL Polaroid Filter—Darkens Skies, Eliminates Glare

Stops glare from water, glass, etc.; darkens sky tones. With color film, controls sky color from light to dark blue. ♦ Shipped from Chicago, Phil. or Los Angeles. See Page 30 for complete details. Shipping weight, 3 ounces.

- ♦ 3 T 8442—31.5 mm. Fits shades A, B, C at left. . . . . \$2.98
- ♦ 3 T 8443—42 mm. Fits shade D at left. . . . . 2.98



## Movie Filter and Shade Kit—With Leather Case

**\$5<sup>39</sup>**

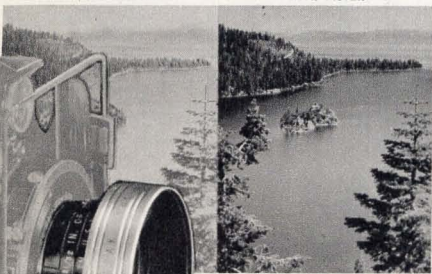
Complete

Made by Harrison and Harrison . . . makers of filters for the Hollywood studios. Lens shade, filter retaining and adjustable aero-lock ring are all machined and polished duralumin. Ground and polished optical glass filters, duralumin bound. Colors: Medium Yellow for normal contrast, Red for extreme contrast, Kodachrome Type A for indoor color film in daylight, and Kodachrome-Haze. (cuts out blue-green distance haze). In genuine elk-tanned lined case. State make and model of lens and camera.

- 3 T 6809—Shipping weight, 1 pound. . . . . \$5.39

WITHOUT FILTER

WITH FILTER



Filters and Shades Add Depth, True Tone Shadings, Sparkle!



## Eastman Combination Lens Attachments

Adapter Ring

**68c**

And Up

Permits a limitless number of filter effects. Each part threaded to screw into each other; just fit adapter over lens mount; any combination of other parts is then possible; a color filter with shade, color filter with wide angle, portrait or diffusion disks. A versatile Pola-Screen may be attached, or the lens shade may be used alone. Used by many professionals.

**Adapter Ring**—Fits over lens, threaded for any other unit. Has ring to hold filter in place.

**Filter Retaining Ring**—Holds color filter, necessary with shade. **Color Filters**—Famous Wratten filters—the world's standard of excellence. K-2 (yellow), G (orange), or A (red).

**Pola-Screen**—Prevents glare and reflections from windows, water, etc.; controls sky tones from light to dark gray without filter; and with color film, sky color can be varied from light to dark blue.

**Lens Shade**—Prevents flare spots and gives clarity and depth to pictures. When ordering, be sure to state filter color wanted. (Other filter colors on special order.) Shipping weight, each unit, 2 ounces.

**Series V**—for all lenses from  $\frac{3}{4}$  to  $1\frac{1}{4}$  in. diameter. (19 to 30 mm.) State lens diameter.

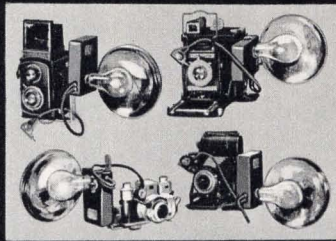
- 3 T 8409—Adapter ring. . . . .68c
- 3 T 8410—Lens shade. . . . . \$1.35
- 3 T 8411—Filter ring. . . . . 69c
- 3 T 8412—Wratten filters. . . . \$1.31
- 3 T 8413—Pola-Screen. . . . . 9.00

**Series VI** . . . for all lenses from  $1\frac{1}{4}$  to  $1\frac{1}{2}$  in. diameter. (31 to 42 mm.) State lens diameter.

- 3 T 8414—Adapter ring. . . . .90c
- 3 T 8415—Lens shade. . . . . \$1.58
- 3 T 8416—Filter ring. . . . . 79c
- 3 T 8417—Wratten filters. . . . \$1.58
- 3 T 8418—Pola-Screen. . . . . 9.90

# MARVEL SPEED FLASH

Synchronizes Camera and Flash Bulb Perfectly



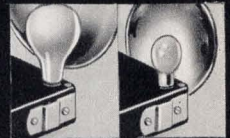
Fits practically all Reflex, Speed Graphic, candid and folding type cameras which are equipped with cable release and tripod sockets.



INTERCHANGEABLE BUSHINGS TO FIT MOST POPULAR MAKES OF SHUTTERS.



SYNCHRONIZER TIMES FLASH PERFECTLY AT ALL SHUTTER SPEEDS.



SPECIAL REFLECTOR CLIP ALLOWS USE OF ANY SIZE BULB.

## MARVEL Concentrating Reflector

Scientifically designed for focusing small bayonet base flashbulbs. Built-in lamp ejector. Positive alignment bracket fits MARVEL battery case, assures maximum light.

3 T 8459—Shpg. wt., 8 oz. . . . . \$1.79

## Precision-Timed MARVEL Speed Flash

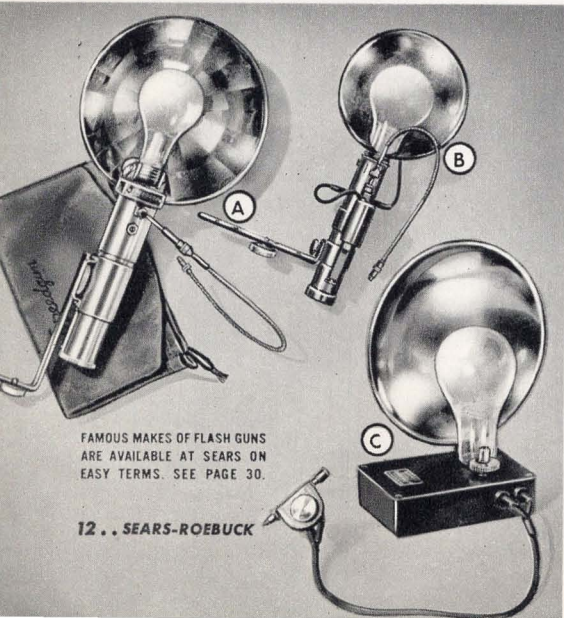
\$7.95

- Fits nearly all cameras with tripod and cable release sockets.
- Accurately pre-adjusted for perfect synchronization; assures fine flash pictures even under difficult conditions.
- Reflector adjusts to focus large and small bulbs correctly.
- Adapter for bayonet-base No. 5 bulb included!

High quality materials and workmanship are combined in the MARVEL Speed Flash to make fine flash pictures almost a certainty . . . even for beginners! Makes your camera equally effective for night or day. Attaches to camera in a jiffy, operates smoothly, simply. You don't have to be a professional photographer to get professional results!

Comes with 6-inch adjustable reflector, battery, and set of bushings for attaching to different size cable release sockets. At no extra cost, we include an adapter to center the new economical No. 5 bulb—with every synchronizer! Furnished in two models, to fit most all cameras. **State make and model of your camera.** We will send you the correct model. Truly an excellent flashgun . . . and one that you can afford, too, for Sears bring you this precision-timed instrument at an amazingly low price. Made exclusively for Sears by one of America's oldest and largest flash-gun manufacturers.

3 T 6243—Shipping weight, 1 pound 4 ounces. . . . . \$7.95



FAMOUS MAKES OF FLASH GUNS ARE AVAILABLE AT SEARS ON EASY TERMS. SEE PAGE 30.

12 . . SEARS-ROEBUCK

### (A) Mendelsohn Universal Model Speedgun

\$25.00

Cash or Terms \$3 Down

The top-notch among flashguns! Fits nearly all cameras with winding type shutters. Attaches quickly and securely to camera. Has sockets for multiple flash, locking device, bulb ejector. Battery case adjustable for 2 or 3 cells. 7 in. adjustable aplianatic reflector. Smooth duralumin battery case. With batteries, protective reflector pouch, attachment bracket, instructions. Same price Cash or Terms.

◆ 3 T 8250T—Postpaid. . . \$25.00

Mendelsohn No. 5 Reflector Makes No. 5 or Press 25 (midjet) bulbs effective at 75 ft.!

3 T 8488T—Postpaid. . . . \$5.00

### (B) Eastman Senior Model Synchronizer

\$14.85

Cash or Terms \$2 Down

Single concentrating type reflector centers both midjet and regular size bulbs. For almost any camera with winding type shutter. Synchronizes up to 1/400 sec. Compact, light-weight duralumin construction, ejector type 5-inch silvered reflector Uses two 1.5 volt batteries (not included). Reflector pouch, instructions. **State make and model of camera.** Cash or Terms.

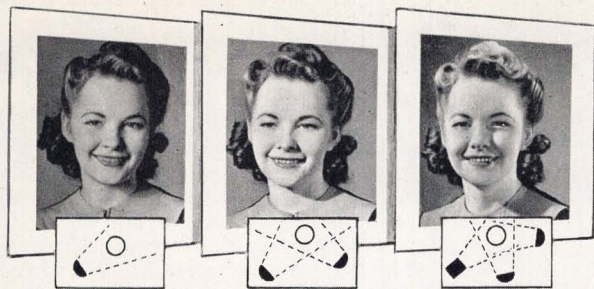
◆ 3 T 8285T—Postpaid. . . \$14.85

Batteries for Above 20 T 4652—Powermaster extra heavy duty. Shipping wt., 2 oz. Each. . . . . 4c

### (C) Kalart Micromatic Speed Flash

Synchronizes with shutter speeds up to 1/1000 sec. Bakelite case, reflector, batteries, adjustment clip, extra shutter bushings included. **State make, model of camera** (shutter if known). Shpg. wt., 1 lb. 4 oz.

◆ 3 T 6202—Standard. . . \$9.95 ◆ 3 T 6226—For Argus C, C-2. . . \$9.95

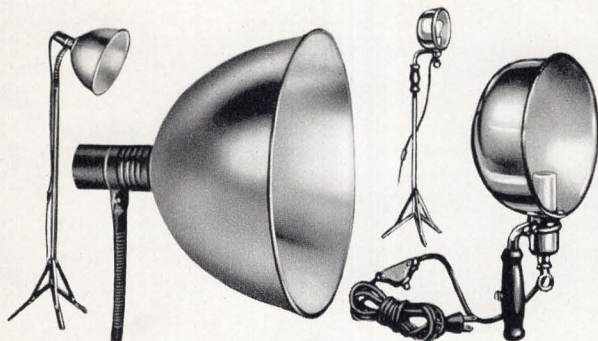


Pictures above show results of various lighting combinations. The more lights you have, the more you can do.

# FLOODLIGHTS SPOTLIGHTS

for Studio-Quality  
Portraits, Indoor Pictures

You'll find everything you need in lighting equipment for your indoor, color and moving pictures on this page ... and as usual, at Sears lower prices.



## Victor Flood Light With Stand

Excellent for portraits, color or commercial work—a light with a hundred uses! Yet priced lower than big-studio units! Designed for super-powerful No. 4 Photofloods; adaptable to smaller sizes. Extra-large 16-in. reflector; flexible neck. Mogul socket; 8½-ft. adjustable stand. Shpg. wt., 8 lbs.

◆ 3 T 08261.....\$8.98

### Diffusion Screen

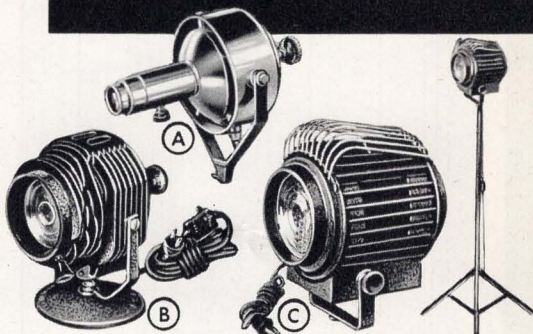
With frame. Clips onto reflector.  
◆ 3 T 8262—Shpg. wt., 2 lbs.....\$2.49  
◆ 3 T 8263—Reducer; takes standard size bulbs. Wt. 4 oz....15c

Items marked ◆ shipped from Chicago, Philadelphia or Los Angeles. See Page 30.

## Acme Portrait Light With Stand

Designed by a famous photographer! New shape, new features for maximum efficiency, yet low priced! Cool wooden handle clamps onto 7-foot rigid steel stand. 7½-in. reflector gives crisp, even illumination. Quickly, easily adjustable ball and socket joint; adjustable porcelain lamp socket for centering No. 1 or No. 2 photofloods or 500-watt T-20 bulb (not included). Enables you to use different bulbs, for more interesting effects! 9-foot rubber covered cord, switch. Shipping weight, 7 pounds.

◆ 3 T 8821.....\$4.98



### (A) Testrite Spotlight with Stand

Twin tandem lenses give crisp, sharp-edged spot. Adjustable beam. Polished aluminum construction. Uses No. 1 photoflood or projection lamp. With 6-foot adjustable steel stand.

◆ 3 T 08665—Shipping wt., 20 lbs.....\$11.95

### (B) F-R Hi-Spot Spotlight

Throws flood or spot. Fresnel lens; 200-watt lamp. Diecast aluminum; rubber feet, tripod socket.

3 T 8689—With lamp. Postpaid.....\$9.95  
3 T 8690—Extra lamp. Postpaid.....\$1.80

### (C) Powerful Golde 500-Watt Spotlight

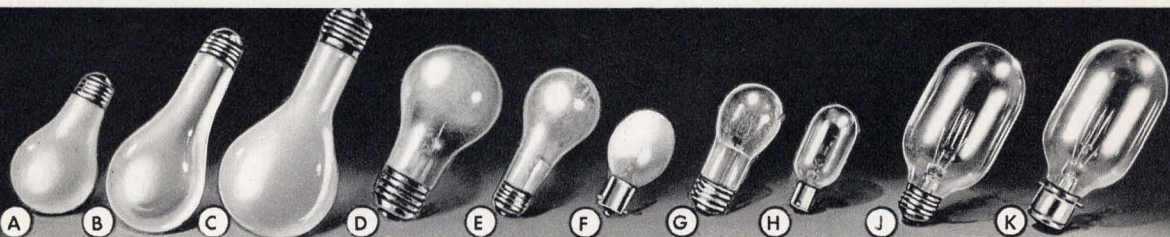
Genuine studio type—unbelievably low-priced! 4½-in. Fresnel lens. Uses T-20 prefocus projection lamp. Rib ventilation. 10-ft. cord.

◆ 3 T 8283—Less lamp. Shpg. wt., 8 lbs....\$9.95

### Stand for Flood and Spotlights

Rigid steel, cadmium plated. 8½-ft. high; 30-in. closed. ¾-in. top section fits standard spotlights and reflectors. Tripod base.

◆ 3 T 08284—Shipping weight, 5 pounds.....\$3.50



## Photoflood Bulbs

Mazda photoflood bulbs for taking pictures indoors at night. Brilliant illumination! Use several at once for better-than-usual results or to obtain unusual lighting effects!

(A) No. 1 Equal to 750-watt lamp in amount of light. For 100-125 volt A.C. or D.C. Life about 2 hrs.  
3 T 6887—Postpaid. Each.....15c

(B) No. 2. Equal to 1500-watt lamp. 100-125 volts. Life, abt. 6 hrs.  
3 T 6880—Postpaid. Each.....30c

(C) No. 4. Equal to 2500-watt lamp. 100-125 volts. Life about 6 hrs.  
3 T 8666—Postpaid. Each.....\$1.40

## Photoflash Bulbs

Special 15% reduction on purchases of 18 bulbs and over! All bulbs Postpaid.

(G) Wabash No. 0—Lowest priced flash bulb made! Small and compact but powerful!  
3 T 8295—2 for.....22c 18 for.....\$1.65

(F) No. 5. Famous midget bulb—smallest made. Highly effective when used with concentrating reflectors (on opposite page).  
3 T 6280—2 for.....26c 18 for.....\$1.98

(E) Synchro-Press 11-A. Foil filled; high flash peak. Packed with power!  
3 T 6885—2 for.....26c 18 for.....\$1.98

(D) Synchro-Press No. 16-A. Extremely powerful—for high shutter speeds, distance.  
3 T 8669—2 for.....30c 18 for.....\$2.30

## Spot, Reflector Lamps

Brilliant lighting makes brilliant pictures easy! Professional-type high-power lamps; serve well for color or black and white pictures!

(H) 200-watt for F-R spot.  
3 T 8690—Postpaid.....\$1.80

(J) T-20 500-watt screw base lamp for 3T6821 and other reflectors with vertical sockets and spots using screw base. 50-hour life.  
◆ 3 T 8281—Postpaid.....\$2.20

(K) T-20 medium prefocus lamp for Golde and other spotlights with prefocus base. 50-hour life.

◆ 3 T 8282—Postpaid.....\$2.20

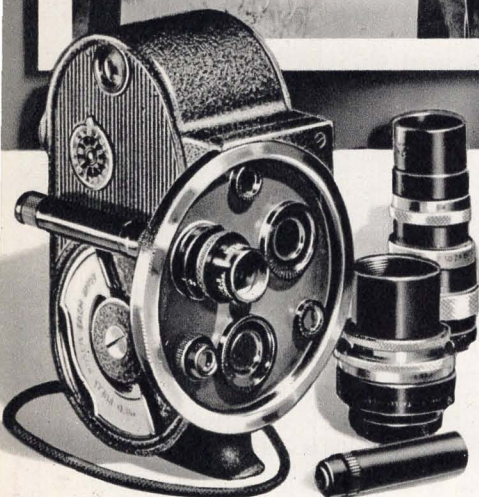
# HOLD ONTO HAPPINESS

Start taking movies of those events that are bringing you happiness! Family, friends, children...your home, garden, vacation travels...these are but a few of the thrilling subjects you can capture with your movie camera! Start now! Make a living record of today's big moments and familiar scenes—you'll value them twice as much tomorrow!

## BELL & HOWELL

### 8 mm. and 16 mm. Movie Cameras Professionally Built

Imagine how much your parents would value a film of your "hide-and-seek" days! Don't wait...start *your* family movie history now. Bell & Howell's compact, professionally-built cameras travel conveniently with you. You'll find it easy to take memorable color movies, too.



#### "Aristocrat" Turret 8 For Quick Lens Change

- Mounts 3 lenses at once; each with viewfinder. Taylor-Hobson f:2.5 lens.
- 4 film speeds.

**\$126<sup>00</sup>**  
f:2.5 Lens

Cash or Terms  
**\$10 DOWN**  
**\$9 MONTHLY**

Truly the aristocrat of 8 mm. movie cameras! Turret head mounts 3 lenses; instantly changes to any one. Matching viewfinder always correct for lens in use. Critical focuser. Four motor speeds: 16, 32, 48 and 64 (slow motion) frames per second. Exposure calculator. Convenient hand strap. Brown crackle finish. Size, 5x3x1 3/4 in. Camera and all accessories below **Postpaid**.

♦ 3 T 8544T—With f:2.5 lens.....**\$126.00**

#### Brown Leather Compartment Case

♦ 3 T 8545T—Has accessory space.....**\$12.50**

#### 1 1/2-in. f:3.5 Telephoto Lenses

♦ 3 T 8547T—Bell and Howell.....**\$46.00**

♦ 3 T 8546T—Taylor-Hobson.....**57.00**

#### 1-in. f:1.5 High Speed Lens

♦ 3 T 8548T—Taylor-Hobson-Cooke.....**\$76.50**

#### Viewfinder Objective

♦ 3 T 8549T—Matches lens. State for which lens wanted.....**\$5.50**

All Bell & Howell cameras, projectors, and supplies on these pages sold for the same price, cash or terms.



#### Filmo 16 mm. Auto-Load Loads in a Flash!

- Speedy magazine load feature
- Comes in 3 models, with f:2.7, 1.9 or 1.5 lens
- 4 motor speeds

**\$115<sup>00</sup>**  
f:2.7 Lens

Cash or Terms  
**\$10 DOWN**  
**\$9 MONTHLY**

Precision-built by Bell & Howell. Simple to load—just slip film magazine in. Permits reloading anytime without loss of film. Single-frame device for trick movies and tilting. Interchangeable lens; new exposure guide. Eye-level viewfinder. Steady-strap handle. Metal body, brown crackle finish. Size, 6 1/4 x 3 3/8 x 1 3/8 in.

#### With f:2.7 Taylor-Hobson Lens

Speeds, 8, 16, 24, 32 frames.....

♦ 3 T 6448T—Postpaid.....**\$115.00**

#### Speedster—Bell & Howell f:1.9 Lens

Twice as fast as f:2.7. Speeds, 16, 32, 48, 64 (slow motion) frames.

♦ 3 T 6449T—Postpaid.....**\$127.50**

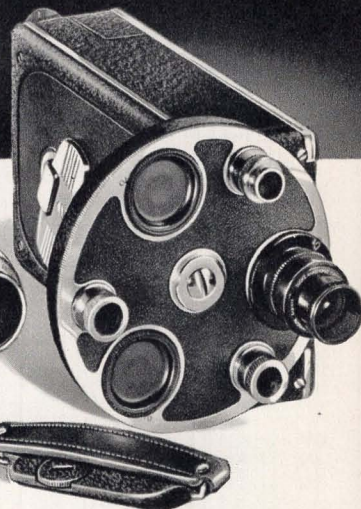
#### Speedster, f:1.5 Taylor-Hobson Lens

Three times as fast as f:2.7. Speeds—16, 32, 48, 64 (slow motion) frames.

♦ 3 T 6450T—Postpaid.....**\$160.50**

#### Tan Leather Carrying Case

♦ 3 T 6451T—Postpaid.....**\$5.00**



#### Filmo Auto-Master Magazine-Load

- Only 16-mm. magazine-load camera with turret
- With fast, fine Taylor-Hobson f:2.7 lens.

**\$195<sup>00</sup>**  
f:2.7 Lens

Cash or Terms  
**\$18 DOWN**  
**\$12 MONTHLY**

Provides instant positioning of any of 3 lenses. Matched viewfinder. Single frame exposure control; exposure lock. Loads in a jiffy—just slide in film magazine. Four speeds: 16, 32, 48, 64 frames per second. Brilliant viewfinder; exposure guide. Metal body; Brown crackle finish. Size, 6 1/2 x 4 x 3 in. Camera and accessories below **Postpaid**.

♦ 3 T 8500T—With f:2.7 lens...**\$195.00**

#### Taylor-Hobson Telephoto Lenses

♦ 3 T 8516T—2-in. f:3.5 lens.....**\$57.00**

♦ 3 T 8517T—3-in. f:4.0 lens.....**74.00**

♦ 3 T 8518T—4-in. f:4.5 lens.....**76.50**

#### 1-in. f:1.5 High Speed Lens

♦ 3 T 8515T—Taylor-Hobson.....**\$76.50**

#### Brown Leather Carrying Case

Holds camera with lenses on turret, extra film and accessories.

♦ 3 T 8501T—Postpaid.....**\$16.50**

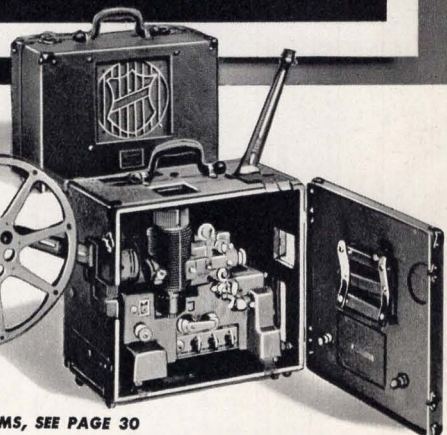
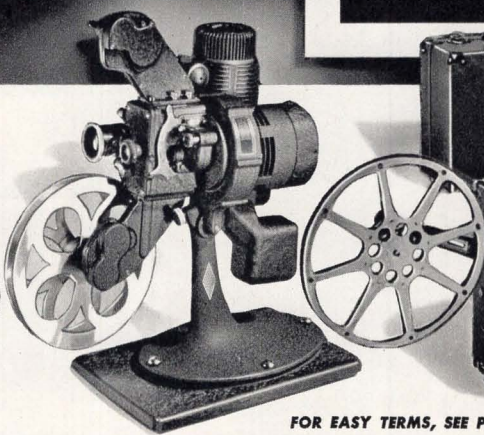
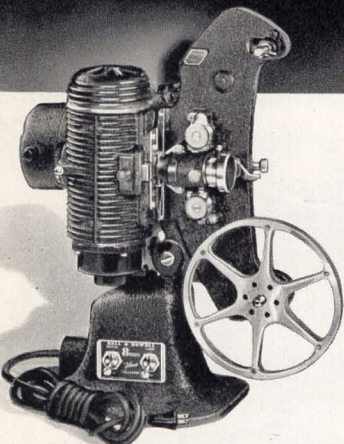
# WITH HOME MOVIES!

"Let's show the movies of our trip! It's just like taking it all over again!" With the ease and simplicity of home movies you can quickly recapture the thrill and adventure of vacation days . . . and such enjoyable family incidents as baby's bath, Junior romping with the puppy or some other warm, living scene you'd like to experience again!

## BELL & HOWELL

### 8 mm. and 16 mm. Projectors, Sound Equipment

To preserve life's highlights on film for years to come you will, of course, want fine theatre-quality projection. This requirement is more than met by Bell & Howell precision-built projectors. All show brilliant black and white or Kodachrome (full color) movies.



### Filmo Master 8 mm. Home Movie Projector

- With 500-watt Lamp
- Fast f:1.6 lens
- Automatic rewind
- With carrying case

**\$99<sup>50</sup>**  
200-ft.

Cash or Terms  
**\$8 DOWN**  
**\$8 MONTHLY**

For sparkling, steady, non-flickering movies. You can't beat this Bell and Howell for quiet and trouble-free operation! Super-efficient 500-watt lighting system has silvered reflector and condenser lenses. Edge tension prevents film scratching; shuttle tooth lessens film wear. Fully gear-driven; swift rewind. Picture size 54x72 in. at 32 feet. Bronzed crinkle finish. For 100-125-volt. A.C. or D.C. With 200-ft. reel, artificial leather case, instructions. **Postpaid.**

◆3T08550T—Cash or Terms. . . **\$99.50**

### New Filmo Master "400"

Sit back—relax—enjoy your movies even more! Has all the excellent features of 200-ft. model above, PLUS 400-ft. film capacity for full half-hour shows without interruption! Brilliant f:1.6 lens. With 500-watt lamp, 400-ft. reel, carrying case, instructions. For 100-125-volt A.C. or D.C. **Postpaid.**

◆3T08574T—Cash or Terms. . . **\$112.50**

### Filmo Master 16 mm. Quality Projector

- Powerful 750-watt lamp.
- Brilliant f:1.6 lens.
- Pictures to 12 ft. wide.
- With carrying case.

**\$139<sup>00</sup>**

Cash or Terms  
**\$12.50 DOWN**  
**\$10 MONTHLY**

For finest projection! Professionally made according to Bell and Howell's most precise specifications. Gives brilliant, flickerless, steady images as it projects 54x72-in. pictures at 32 feet. Shows still and reverse pictures.

Fast interchangeable f:1.6 lens; powerful 750-watt bulb for brilliant illumination. Pilot light; separate lamp switch. Heat resisting safety shutter protects film on single frame projection. Fast automatic rewind. Protects films from surface scratches. Two-Way tilting device. 400-foot film capacity. Dark brown crinkle enamel finish and nickel plated trim. Operates on 100-125-volt A.C. or D.C. circuit. With 400-foot reel and brown, artificial leather covered, plywood case. Instructions. **Postpaid.**

◆3T08565T—Cash or Terms. . . **\$139.00**

FOR EASY TERMS, SEE PAGE 30

### 750-Watt Filmosounds For Home "Talkies"!

- Powerful 750-watt lamp.
- Synchronized sound-on-film
- 2,000 ft. film capacity.
- Carrying cases.

**\$276<sup>00</sup>**  
Commercial

Cash or Terms  
**\$30 DOWN**  
**\$16 MONTHLY**

Perfect synchronization between sound and projection.

"Commercial" Model. Single case holds both projector and speaker. Ideal for travel and sales use, and for the home.

"Academy" Model. Two projectors in one. Uses either sound or silent 16 mm. films. Two cases . . . projector in one, amplifier and speaker in the other.

Both models have true-tone electro-dynamic speaker, amplifier with 50 to 7,000-cycle frequency range, sound filter system, volume and tone control. Radio interference eliminator, noiseless exciter lamp, interchangeable lens, speed control, adjustable tilt, motor rewind, pilot light. Rugged black fibroid covered cases. For 100-125-volt A.C. or D.C. **Postpaid.** Same price, cash or terms.

◆3T8567T—"Commercial" . . . **\$276.00**

◆3T8566T—"Academy" . . . **298.00**

Items marked with ◆ shipped from Chicago, Philadelphia or Los Angeles. See Page 30 for complete details.

# Remember Way Back When

.. the old family album was the only way of recording happy events?

# HOME MOVIES HAVE



The stiff, posed wedding picture has given way to complete, living records of the big day... often in full color, too!

## EASTMAN 8 MM PROJECTORS A



### REVERE 8 MM.

#### Double 8 Turret Movie Camera

\$6 DOWN  
\$6 MONTHLY **\$63.50** with f:2.5 lens

- Turret mounts 3 lenses at once; gives instant interchange.
- With fast, sharp f:2.5 Wollensak Velostigmat lens.
- Five motor speeds, 8 to 32 frames per second.

Lowest price we know of for a genuine high quality turret head movie camera. Attach telephoto and high speed lenses below; a turn of the turret brings the lens you want into position! Uses any standard black and white or color double 8mm. film. Extra telephoto viewfinder; exposure chart; footage indicator. Brown crackle finish metal body. Film speed governor. Shpg. wt., 3 lbs., 10 oz.  
♦ 3 T 8539T.....**\$63.50**

#### Accessory Lenses

♦ 3 T 8540T—1 1/2 mm. f:1.9 lens. Shpg. wt., 8 oz. .... **\$39.95**  
♦ 3 T 8541T—1-in. f:2.7 Semi-telephoto. Shpg. wt., 10 oz. .... **\$36.95**  
♦ 3 T 8542T—1 1/2-in. f:3.5 telephoto. Shpg. wt., 12 oz. .... **\$36.95**

#### Brown Bridle Leather Case

Protects camera from damage.  
♦ 3 T 8543T—Shpg. wt., 10 oz. .... **\$8.95**

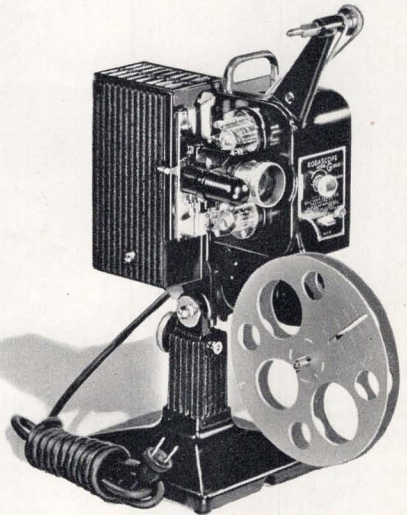
#### Model 80 500-Watt Projector

\$6 DOWN  
\$6 MONTHLY **\$59.95** Model 80

- This same projector sells elsewhere for \$65.00.
- F:1.6 lens for fine color or black and white pictures.
- Shows large, clear pictures up to 5x6 ft. at 32 ft.

For theater-quality, flickerless movies in your own home! Has speed control, automatic rewind, double blower cooling system. 500-watt bulb assures clear, sharp pictures. Smooth-running ball bearing motor operates on 100-125-volt AC or DC. Brown crackle finish. With lamp and 300-ft. reel.

There is no carrying charge for Easy Terms on this projector. Shpg. wt., 21 lbs.  
3 T 06466T.....**\$59.95**  
De Luxe Model 85. \$75.00 Value! Case included! All features of Model 80 (including lens and 500-watt lamp) plus threading light, reflection diffuser, and geared tilt. Shpg. wt., 23 lbs.  
♦ 3 T 06463T—With case. **\$69.95**  
Case for Model 80  
Wood, artificial leather covered.  
3 T 06468T—Shipping weight, 6 lbs. .... **\$5.29**



### Eastman Kodak Model G For Finer 16 mm. Projection

- F:1.6 lens for excellent black and white or color projection.
- Shows brilliant pictures up to 12 ft. wide.
- Efficient, smooth running noise-free motor.

**\$118.10**

\$10 DOWN, \$9 MO.

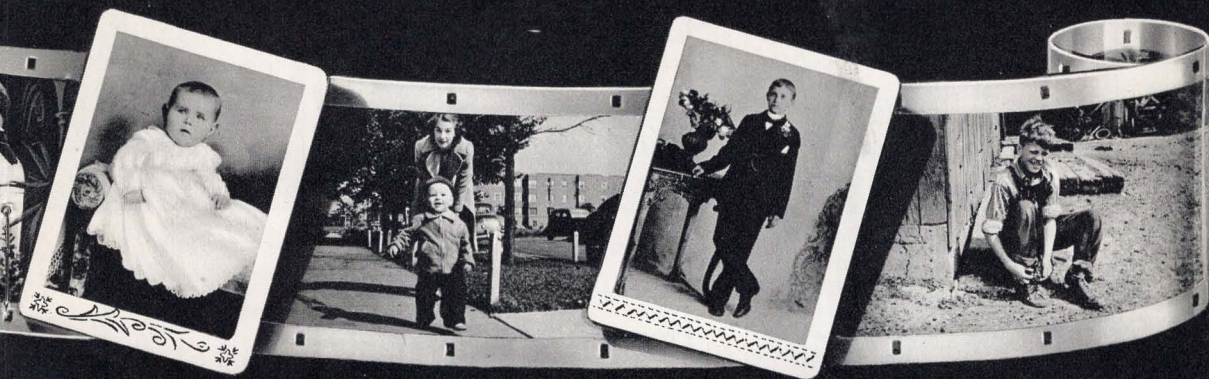
Finer 16 mm. projection, greater picture sizes. Dependable performance. Has rapid motor rewind, projects pictures in reverse or one frame at a time, has speed control. Also pilot light, four position single switch control of lamp, motor, etc. 750-watt lamp included. Adjustable screw tilting device. For 100-125-volt AC or DC. Comes with 400-foot reel.  
♦ 3 T 08564T—Postpaid ..... **\$118.10**

#### Carrying Case for Model G

Sturdy wood case, covered with artificial leather.  
♦ 3 T 06155T—Shipping weight, 6 pounds. .... **\$7.95**  
Cameras and projectors on these two pages sold for same price cash or terms due to standard practice.



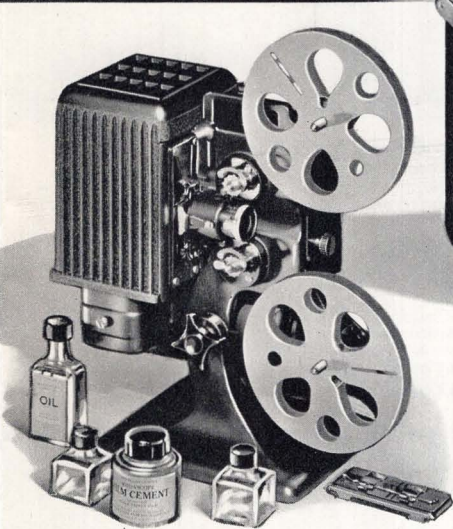
# PUT THE OLD FAMILY ALBUM OUT OF BUSINESS



Home Movies catch the cutest moments of baby's first years in unposed scenes that now need never be forgotten.

There is no artificial note in modern, easy-to-take home movies. People are recorded as they are . . . as you know them and want to remember them.

## 8 MM. AND 16 MM. MAGAZINE-LOAD CAMERAS



### Model 70 8 mm. Projector For Brilliant, Home Movies

- With powerful 500-watt lamp.
- Brilliant f:1.6 lens.
- Pictures 6 ft. wide at 32 ft.
- Positive framing adjustment.
- Pre-lubricated bearings.
- Splicing outfit included.

Finest of the Kodascope 8's! An ideal companion projector for your Magazine 8 or other top-flight camera. Quiet, smooth . . . minimum film wear. Highly corrected lens, three-way lamp and motor switch. Film speed control, tilting device. Gray enamel finish. With 200-ft. reel.

3 T 6454T—Postpaid. . . . . **\$61.50**  
Case for Model 70. . . . . **\$6 DOWN, \$6 MO.**  
3 T 06455T—Black. Postpaid. . . . . **5.95**

**Eastman Model 70-A Projector**  
Same as Model 70, but takes 400-ft. reels.  
♦ 3 T 06456T—Postpaid. . . . . **\$71.50**  
Case for Model 70-A.  
♦ 3 T 06443T—Black. Postpaid. . . . . **7.95**



### 16 mm. Magazine-Load Cine-Kodak

\$10 DOWN  
\$9 MONTHLY **\$112.50** f:1.9

- f:1.9 Kodak Anastigmat lens.
- Loads in 3 seconds; insert film magazine, close cover, shoot!
- Change from black and white to color without film loss.
- 3 speeds including slow motion.

Combines finer projection possibilities of 16 mm. film with fast magazine loading. Lens quickly interchangeable. Footage indicator on magazine; also pulsing button to help you gauge scene length. Motor speeds 16, 32, and 64 frames per second. Exposure lock so operator can appear in picture. Automatic motor shut-off assures uniform exposure. Black leather cover.

♦ 3 T 8537T  
Postpaid. . . . . **\$112.50**

**Combination Carrying Case**  
Brown bridle leather.  
♦ 3 T 8538T—Postpaid. . . . . **\$13.50**

♦ 3 T 8508T—3-in. f:4.5 Telephoto lens for 16mm. magazine. Postpaid. . . . . **\$45.00**

### 8 mm. Magazine-Load Cine-Kodak

\$8 DOWN  
\$8 MONTHLY **\$95.00** f:1.9

- f:1.9 Kodak Anastigmat lens.
- Uses magazine films; rapid film loading and interchanging.
- Four motor speeds, 16, 24, 32 and 64 (slow motion) frames per sec.
- Pulsing button footage meter.

Finest Eastman 8 mm. camera — superb in every detail! Loads in 3 seconds . . . permits film interchange without loss of a single frame! Lens is interchangeable for use of a telephoto. Extra long-running motor; enclosed eye-level viewfinder; footage meter and pulsing button help you keep track of film being used. Exposure lock allows operator to take his own picture. Uses 25-ft. film magazine, black and white or color; makes 50 ft. for projection. Black leather covering; chromium trim.

3 T 8535T—Postpaid. . . . . **\$95.00**

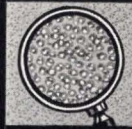
**Matching Combination Case**  
Same leather as camera. Compartments for films, filters.  
3 T 8536T—Postpaid. . . . . **\$13.50**

# MARVEL SCREENS

Superb Reproduction at Low Cost



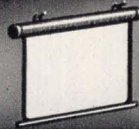
**\$575**  
30x40-IN.  
WITH STAND



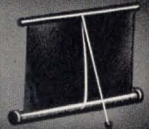
BRILLIANT GLASS  
BEAD SURFACE



ROLLS INTO METAL  
CARRYING CASE



CAN BE HUNG  
ON WALL



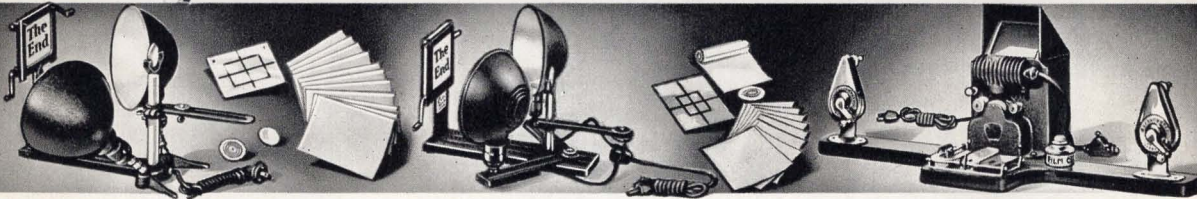
RIGID TABLE  
STAND INCLUDED

1/3 Less Than Similar Quality Elsewhere

- Tri-purpose: Floor Stand . . . Table Stand . . . Hangs on wall.
- Glass beaded surface for brilliant projection, sharp pictures.
- Complete with heavy, strong metal tripod stand.
- Rubber footed table stand included; also can be hung on wall.
- Black border frames pictures, makes them stand out.
- Rolls compactly into metal case . . . easy to carry . . . keeps clean.

Greatest movie screen value we've ever seen! Supreme for brilliant projection of either black and white or color films. Guaranteed not to sag or twist, always flat and in focus. Recommended as an ideal movie screen for all around use; at home, in classroom, and for many commercial purposes.

- 3 T 06841—Size, 30x40 inches. With tripod stand. Shipping weight, 11 lbs. . . . . **\$5.75**
- 3 T 06212—Size, 30x40 inches. Without tripod stand. Shipping weight, 5 lbs. . . . . **\$3.98**
- 3 T 08570—Size, 36x48 inches. With tripod stand. Shipping weight, 14 lbs. . . . . **9.95**
- 3 T 08571—Size, 36x48 inches. Without tripod stand. Shipping weight, 8 lbs. . . . . **8.49**
- 3 T 08573—Size, 39x52 inches. Without tripod stand. Shipping weight, 10 lbs. . . . . **9.95**



## Universal Titler

Give your movies added interest with proper titles. This single model fits all 16 mm. 8 mm. or 9 1/2 mm. cameras and will take either typewritten cards or movable letters. Centers titles evenly. Has continuous "rolling" title attachment for moving scroll and unusual title effects. Use No. 1 photofoods in reflectors. Rigidly built, cast metal base. 2 auxiliary lenses, cards, paper, instructions, etc. Shpg. wts. 6 lbs. and 7 lbs.

**\$549**  
Up

- ♦ 3 T 8290—Titler without reflectors. . . . . **\$5.49**
  - ♦ 3 T 8466—Titler with reflectors. . . . . **\$7.49**
- Items marked ♦ shipped from Chicago, Phil., or Los Angeles. See Page 30 for complete details.

## Excel Titler

Fits all 8 or 16 mm. cameras. Continuous rolling title attachment, 2 adjustable reflectors (use No. 1 photofoods). With auxiliary lens, focus target, title cards, roll of paper, instructions. Shpg. wts. 3 and 5 lbs.

**\$450**  
Up

- ♦ 3 T 6843—Less Reflectors. . . . . **\$4.50**
- 3 T 6844—With Reflectors. . . . . **6.75**

## Craig Editor and Splicer

A new film editor—revolutionary in design! Permits the editing of actual motion pictures on a screen. Film can be instantly removed from the projection unit for the removal of undesirable frames. Craig heavy duty splicer mounted on baseboard for easy splicing, adding titles, etc. Has high speed rewinds. Operates without a shutter, eliminating intermittent movement of picture frames, permitting projection at any speed without blur. Designed for the most particular. Film cement included.

**\$2395**  
8 mm.

- ♦ 3 T 08296—For 8 mm. Shpg. wt., 15 lbs. . . . . **\$23.95**
- ♦ 3 T 08291—For 16 mm. Shpg. wt., 20 lbs. . . . . **\$44.55**



## Keystone Film Splicer

Automatically squares ends and aligns film; no scraping of emulsion. Gives clean and strong splice. Film cement included. **State for 8 or 16 mm. film.** Shpg. wt., 12 oz.

**\$339**

- 3 T 8552. . . . . **\$3.39**

## Craig Senior Splicer

For 16 mm. film only. Beautifully machined and finished. A heavy duty, positive splicer that will never need replacement. No water needed. Shipping weight, 2 pounds.

**\$900**

- ♦ 3 T 8292. . . . . **\$9.00**

## F-R Ciné Action Editor

Use for sound or silent film. Similar to editors used in Hollywood. Film may be viewed while in motion or at rest—magnified 4 times through a brilliantly lighted viewing lens; no reflecting mirrors. No intermittent or oscillating parts, eliminates film slap and travel ghost. **State for 8 or 16 mm. film. Postpaid.**

**\$716**

- ♦ 3 T 8293. . . . . **\$7.16**

## Craig Junior Rewinds

High ratio rewinds, particularly adapted for 8 mm. use. Finished in black crackle enamel. Will give good service in titling, splicing, etc., but are not of the superb quality of those at right.

**\$203**  
Each

- ♦ 3 T 8563—Shpg. wt., 2 lbs. Each. . . . . **\$2.03**

## Craig Senior Rewinds

Provide quick and efficient 16 mm. film winding when editing, splicing, or cleaning. Heavily built for lifetime wear; chrome plated for handsome appearance. Will accommodate 400-foot reels.

**\$405**  
Each

- ♦ 3 T 8294—Shpg. wt., 3 lbs. Each. . . . . **\$4.05**

## Marvel Film Cement

Complete with brush in stopper. 1 oz. bottle.

- 3 T 6828—Shipping weight, 6 ounces. . . . . **19c**

# HOME MOVIES AT A SAVING

With Sears Panchromatic 16 mm. Film

"We get excellent movies with  
Sears film...and save 10%  
over similar quality elsewhere"



## First Quality in Every Respect!

• Standardized, high quality movie film made in U. S. A. to our exacting specifications. • For all-around use.

Keep your movie costs low—your quality high—with Sears Pan 16 mm. 100-foot roll Movie Film! Made by one of the largest film manufacturers in America. Standardized, too, for satisfactory results outdoors or indoors with photofoed lamps. Weston speed 16 daylight, 12 tungsten. Shipping weight, 100-foot roll, 9 ounces.  
3 T 6783—Sears Panchromatic 16 mm. Film. 100-Foot Roll.....\$3.98

**\$3.98**

## Marvel 8 mm. Movie Film

Fit all standard 8mm. movie cameras. All are 25 feet, double width, making 50 feet for projection. Made in U. S. A. Shipping weight, 4 ounces.

**High-Speed Panchromatic** Weston speed rating, 50 Day., 40 Tung. Indoors or outdoors. **\$1.59**  
**Orthochromatic** Weston speed rating, 12 daylight. For outdoor use only. **\$1.29**

PRICES ON ALL MOVIE FILMS INCLUDE DEVELOPING, REVERSING AND RETURN TRANSPORTATION IN THE UNITED STATES

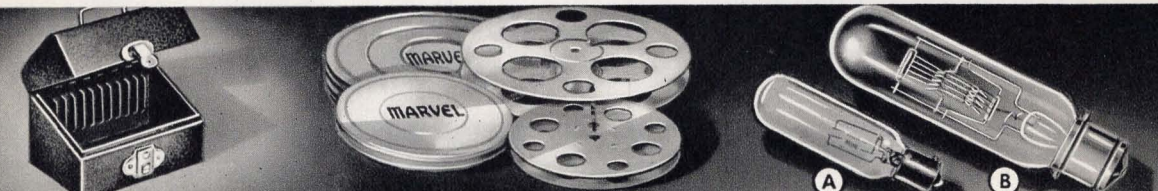


## For All Standard 8 mm. Movie Cameras

All are 25-ft. double width, making 50 ft. for projection.  
**Eastman Kodachrome Film for Natural Color Movies. Postpaid.**  
3 T 6785—Regular type. For daylight.....\$3.40  
3 T 6723—Type A for artificial light.....\$3.40  
**Eastman Magazine 8 mm. Films. Postpaid.**  
3 T 6725—Kodachrome daylight type.....\$3.75  
3 T 6772—Kodachrome Type A (for artificial light).....3.75  
3 T 6724—Super-X. Black and white for indoors or outdoors... 2.25  
**Eastman 8 mm. Black and White Movie Films. Postpaid.**  
3 T 6779—Regular Pan. Weston speed rating, 8 day-light, 5 tungsten.....\$1.80  
3 T 6740—Super-X Pan. Weston speed rating, 24 day-light, 20 tungsten.....\$2.03  
**Aga 8 mm. Black and White Movie Films.**  
3 T 8700—Regular Pan. Weston speed rating, 8 Day., 5 Tung. Shpg. wt., 4 oz. \$1.79  
3 T 6734—Hypan. Weston speed rating, 24 daylight, 20 tungsten. Shpg. wt., 4 oz. \$1.98

## For Standard 16 mm. Movie Cameras

**Eastman Kodachrome for Natural Color Movies—Postpaid Regular Kodachrome. Daylight type. Weston, 8 daylight.**  
3 T 6784—50-ft. roll.....\$4.30  
3 T 6782—109-ft. roll.....\$8.00  
3 T 6706—50-Ft. Magazine for Eastman, Bell & Howell.....\$4.65  
**Kodachrome Type A. For pictures with artificial light.**  
3 T 6797—50-ft. roll.....\$4.30  
3 T 6798—100-ft. roll.....\$8.00  
3 T 6799—50-Ft. Magazine for Eastman, Bell & Howell.....\$4.65  
Shipping wts. for film below: 100-ft. roll, 9 oz.; 50-ft. roll, 6 oz.  
**Eastman Super-X Pan** Weston, 32 day., 24 tungsten.  
3 T 6775—50-ft. roll.....\$2.93  
3 T 6776—100-ft. roll.....5.40  
3 T 6754—50-Ft. Magazine for Eastman, Bell & Howell.....\$3.15  
**Aga Plenachrome (Orthochromatic).** Weston, 12 day., 6 tungsten.  
3 T 6780—50-ft. roll.....\$2.48  
**Eastman Super-XX Pan** Weston, 100 day., 80 tungsten.  
3 T 6735—50-ft. roll.....\$3.38  
3 T 6777—100-ft. roll.....6.08  
3 T 6755—50-Ft. Magazine for Eastman, Bell & Howell.....\$3.60  
3 T 6781—100-ft. roll.....\$4.05



### De Luxe Storage Case

Strong steel construction. Brown crackle finish. With lock, key. Keeps out dust.  
**\$189**  
3 T 6236  
For 200-foot 8 mm. Reels Shipping weight, 2 pounds 8 oz.; 3 lbs. 8 oz.; 6 lbs.  
3 T 6236—For 6 reels.....\$1.89  
3 T 6848—For 12 reels.....\$2.59  
3 T 8457—For 18 reels.....3.59  
For 400-foot 16 mm. Reels Shipping weights, 3 pounds 8 oz.; 5 lbs. 4 oz.; 7 lbs.  
3 T 6237—For 6 reels.....\$1.98  
3 T 6850—For 12 reels.....\$2.69  
3 T 8458—For 18 reels.....4.69

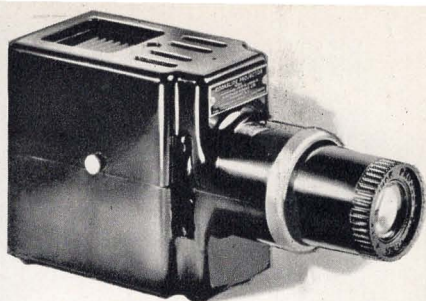
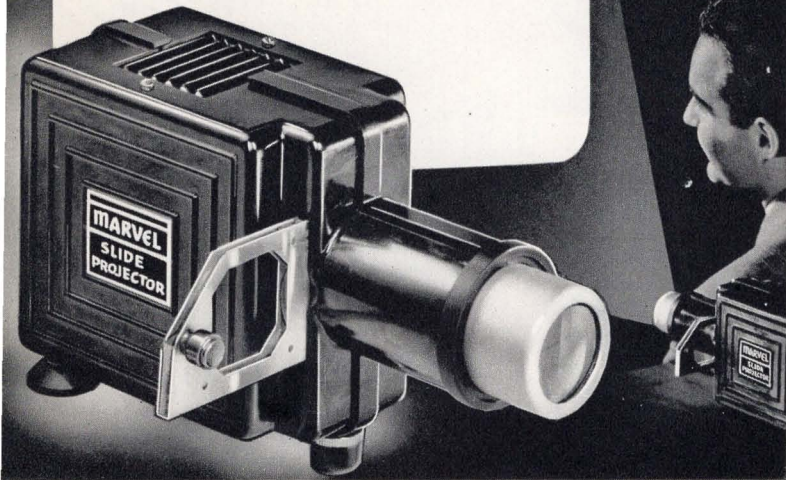
### MARVEL Reels, Cans

Sure-grip clip at hub for attaching film quickly, surely.  
**Reels:** For all projectors. Aluminum construction; light in weight. **Lightweight Aluminum Cans:** Protect films from dust and damage. Easy to stack, take up little room.  
**8 mm. Reels and Cans**  
3 T 6879—200-foot reel.....29c  
3 T 6882—Can for above.....28c  
Shipping weight, each, 7 ounces.  
**16 mm. Reels and Cans**  
3 T 6896—400-foot reel.....49c  
3 T 6897—Can for above.....49c  
Shipping weight, each, 8 ounces.

### Lamps for 8 and 16 mm. Projectors

Always keep a spare on hand! High quality lamps built for long life. 100-125-volt concentrated filament lamps. Prefocus base. Fit Eastman, Keystone, Revere, Victor, Ampro and Excel projectors. Be sure to state make and model of your projector.  
**72c**  
And Up  
(A) 3 T 6648—100-watt T-8. Shpg. wt., 6 oz.....72c  
(A) 3 T 6649—200-watt T-8. Shpg. wt., 6 oz.....\$1.19  
(B) 3 T 6656—200-watt T-10. Shpg. wt., 8 oz.....1.79  
(A) 3 T 6657—300-watt T-8½. Shpg. wt., 6oz.....1.98  
(B) 3 T 6651—300-watt T-10. Shpg. wt., 8 oz.....2.39  
(B) 3 T 6652—500-watt T-10. Shpg. wt., 8 oz.....2.98  
(B) 3 T 6653—750-watt T-12. Shpg. wt., 8 oz.....3.69

Enjoy the True Beauty of  
**COLOR FILM**

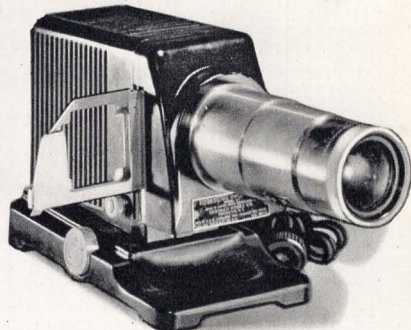


**Kodal slide I**

**\$18<sup>50</sup>**

\$2.50 DOWN

4-in. f:3.7 Kodak Projection lens. 100-watt bulb and rubber covered cord and plug. Takes 35 mm. or Bantam transparencies in 2x2-inch glass slides or Kodak Ready-mounts only.  
**3 T 8676T**—Postpaid. Cash or Terms.....**\$18.50**  
**3 T 8677T**—Case for above. Postpaid..... **4.00**



**Kodal slide II**

**\$33<sup>50</sup>**

\$4.00 DOWN

**DeLuxe Model!** Made by Eastman... for brilliant projection! Fine 5-in. f:3.7 lens. Projects 35 mm. or Bantam transparencies. Has spherical reflector and 3 condensing lenses; heat absorbing glass. Removable insulated lamp house, 100-watt bulb, 12-ft. cord. Sturdy construction, black enamel, aluminum trim. Size, 4x6 1/2 x 5 1/4 in. **Postpaid.**  
**♦ 3 T 8678T**—Cash or Terms..... **\$33.50**  
**♦ 3 T 8679T**—Carrying case for above. Holds slides, accessories. **Postpaid.... \$8.00**

**The NEW MARVEL Slide Projector**

ONLY  
**\$745**

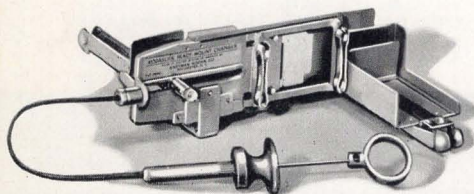
- Scientifically ground and polished double condensers.
- Precision ground four-inch f:3.5 lens for sharp images.
- Powerful concentrated filament 100-watt pre-focused lamp.
- Heat-resisting, breakage-resistant black Bakelite case.
- Ten-foot extension cord with on-off switch.
- Accommodates 35 mm., 828 (Bantam) size film, 1/2-V.P. (127).

Get the utmost enjoyment out of your color films with the new, brilliant-image MARVEL projector. It's Sears own projector, and as usual, it's packed with features that you can't find anywhere else in this price class, or even in many selling for much more. Projects colors beautifully, capturing all the splendor of the scene itself. You'll enjoy your color slides as you never have before, and you'll want to show them over and over again.

Streamlined case is molded of tough, break-resistant Bakelite. Convection ventilating system keeps it cool. Powerful 100-watt bulb. Takes both Bantam and 35 mm. and 1/2 V.P. 2-in. glass slides, Kodachrome Ready-mounts. Projector rests on steady rubber feet; two rear legs are suction cups to hold projector rigid during operation. Complete with double slide holder. Smooth working lens tube fits snugly into case, lets you focus the image perfectly.

**3 T 8520**—Shipping weight, 5 pounds.....**\$7.45**

Projectors on this page operate on 100-125-volt A.C. or D.C.

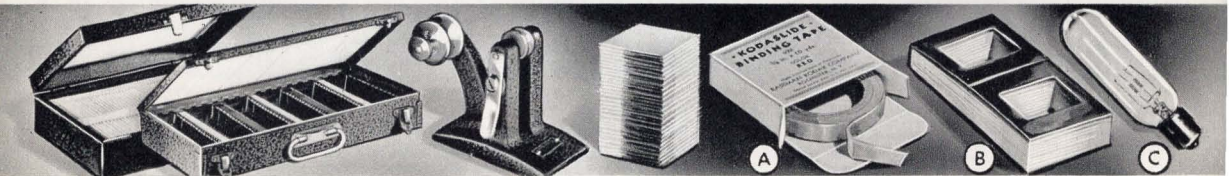


**Kodal slide Ready-Mount Changer**

Designed to make the loading and changing of Kodal slide Ready-mounts in Kodal slide Projectors easy. For Model I or Model II. One loading enables user to show, in the desired projection order, up to 50 Ready-mounts, while sitting comfortably beside projector. Plunger-type, finger operated feed mechanism with 30-inch cable slides into projection position,

then into receiving magazine. Image on screen is covered while slides are being changed. Really a wonderful convenience, because you don't have to bother with the nuisance of slipping each slide in individually. Enjoy your pictures as much as your friends will. Also sold on Easy Terms. See Page 30.

**♦ 3 T 8519**—Postpaid.....**\$12.00**



**Slide File Box**

Holds 100 2x2-in. slides. Artificial black leather. Hinged top with index inside.

**3 T 8513**—Wt., 2 lbs.....**\$1.79**

**De Luxe File Box**

Steel, with crackle finish. Safety catch, carrying handle. Holds 150 slides. Each slot indexed. Shpg. wt. 3 lbs.

**3 T 8509**.....**\$2.49**

**Slide Binder**

The quick, inexpensive way to bind your slides. Simply slip in slide glasses and slide in place, revolve and tape goes on evenly. Heavy metal construction. Uses Kodal slide tape shown at right. Shipping wt., 4 lbs. Order one today!

**3 T 8502**.....**\$3.49**

**Binding Supplies**

**Slide Glass.** 2x2-in. 100 in pkg. Very clear glass. Made in Germany.  
**3 T 8503**—Shpg. wt., 1 lb.....**59c**  
**(A) Eastman Kodal slide Tape.** Red 3/8 in. wide. 10 yds. to roll.  
**3 T 8505**—Shpg. wt., 3 oz.....**19c**  
**(B) Slide Masks.** 2x2-in. size double masks. Opening for 35 mm. film. Package of 50.  
**3 T 8504**—Shpg. wt., 4 oz.....**39c**

**Projector Lamps**

**(C) For brilliant projection!** Order a spare lamp for your projector. Uses 100-125-volt A.C. or D.C.  
**3 T 8575**—100-watt for MARVEL projector above. **Postpaid.....35c**  
**3 T 6648**—100-watt for Kodal slides I or II above. Shipping wt., 6 oz.....**72c**

# COLOR PRINTING OUTFITS, SUPPLIES

Simplified and Inexpensive

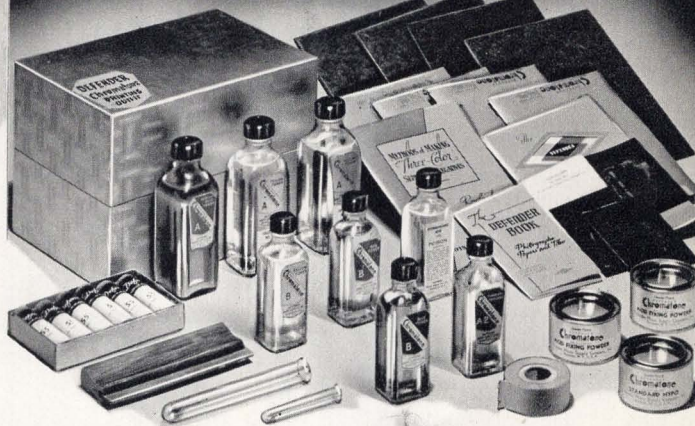


For the first time, Sears bring you actual color printing equipment; materials that enable you to experiment with the same processes used to make the gorgeous natural color magazine covers. The materials and equipment shown here are in actual everyday use in the big color studios, and are designed to form the nucleus of your color darkroom.

## Flexichrome Kit **\$6.00**

A NEW METHOD! Gives the best results yet obtained using only a regular negative. Simple to use; an ideal introduction to color work. Set includes: Set of 12 colors, Black dye bath, chemicals, varnish, blotters, two brushes and a complete booklet of instructions. Buy the correct size Flexichrome Film below.

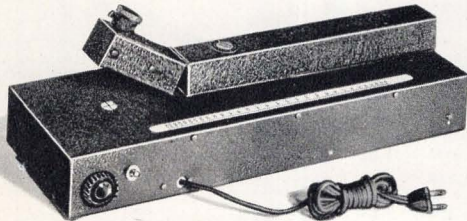
- ◆ 3 T 8461—Postpaid.....\$6.00
- Flexichrome Film
- ◆ 3 T 8480—5x7-in. 1 dozen. Postpaid.....\$1.95
- ◆ 3 T 8481—8x10-in. 1 dozen. Postpaid.....\$4.20



## Chromatone Kit for Color Prints **\$7.50**

Here, in one outfit, is everything you need to make a dozen 5x7-inch natural color prints from your separation negatives. Don't miss the opportunity to learn how easy it is to make color prints. Included is a copy of the book, "The Chromatone Process" and a practice set of three-color separation negatives. The process is simple. First, color separation negatives are made through proper filters. Each is printed on Chromatone paper, which is bleached and toned to complementary colors with materials furnished. When stripped and superimposed a beautiful color print results.

- ◆ 3 T 8462—Nothing else to buy. Postpaid.....\$7.50



## Marshall Densitometer **\$35.55**

Used by famous color photographers for matching separation negatives for perfect color prints. A sensitive aid to precision work. Assures perfect balance of negatives and matrices. Sturdy metal construction. With accessories and instructions. Cash or Terms.

- ◆ 3 T 08463T—Shpg. wt., 25 lbs.....\$35.55

Items marked ◆ shipped from Chicago, Philadelphia or Los Angeles. See Page 30 for details.

## Curtis Color Printer

Make your own color prints from your Kodachromes. **\$14.85**

Anyone who can make good bromide enlargements can make color prints. Makes 3 perfectly balanced negatives with equal exposures. Makes wiresharp separation negatives from 35 mm., Bantam, or cut film up to 4x5 inches which can be enlarged to any size. Set includes filter wheel, rheostat, voltmeter, correct light source, case, and built-in, accurate printing frame. In complete kit form, with instructions. Easy to assemble. Shipping weight, 15 pounds.

- ◆ 3 T 08464.....\$14.85



## Color Printing Supplies

- Concentrated. For Wash-Off Process.
- Curtis Orthotone Developer
- 3 T 8485—Shpg. wt., 1 lb. 4 oz.....\$1.80
- Curtis Hardening Bleach—2 solutions
- 3 T 8486—Shpg. wt., 1 lb. 4 oz.....\$1.20
- Curtis Paper Mordant—2 solutions
- 3 T 8487—Shpg. wt., 10 oz.....\$2.10
- Curtis Color Dyes—Red, yellow, blue dyes, buffer, acetic acid, ammonia, formaldehyde.
- ◆ 3 T 8465—Shpg. wt., 1 lb. 12 oz.....\$4.50



## Wash-off Films

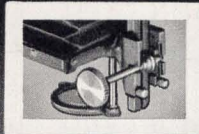
- Made by Eastman. For making color prints by Orthotone or Eastman Wash-off Relief processes. 12 films in box. Shpg. wts., 5x7-in., 8 oz.; 8x10-in., 1 lb.
- ◆ 3 T 8476—5x7 size. Box.....\$1.49
- ◆ 3 T 8477—8x10 size. Box.....\$2.19

## Books on Color—By Curtis

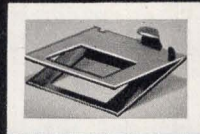
- How to Make Good Color Prints from Kodachrome. How to make separation negatives, match gray scales, etc. Very complete.
- 3 T 8467—48 pages; illus. Postpaid.....50c
- Color Printing Simplified—How to avoid errors, get better results from color printing.
- 3 T 8468—48 pages; illus. Postpaid.....25c
- Curtis Color Handbook—Treats camera, film, exposing, darkroom, processes.
- 3 T 8469—96 pages; illus. Postpaid.....\$1.00

# MARVEL SUPERIOR QUALITY ENLARGERS

Tremendous  
Savings!



PRECISION V-GUIDE  
FOCUSING



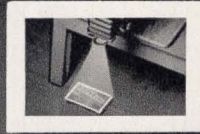
GLASSLESS  
NEGATIVE CARRIER



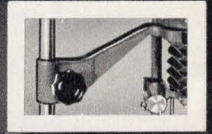
ADJUSTABLE  
LAMP



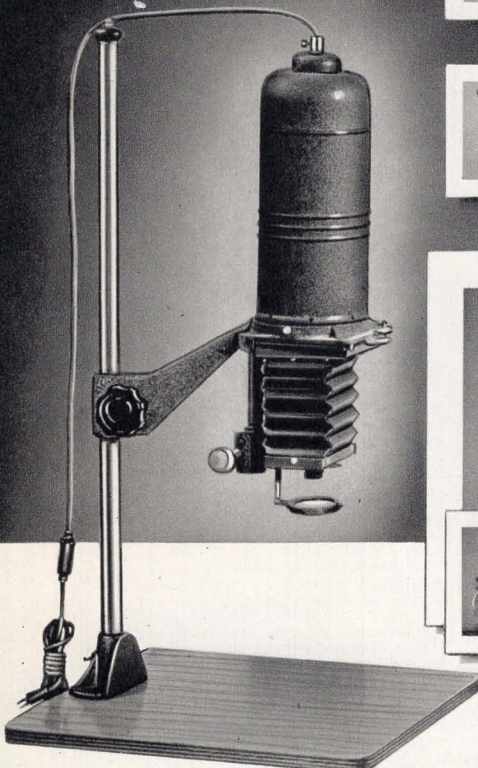
REMOVABLE  
LENSBOARD



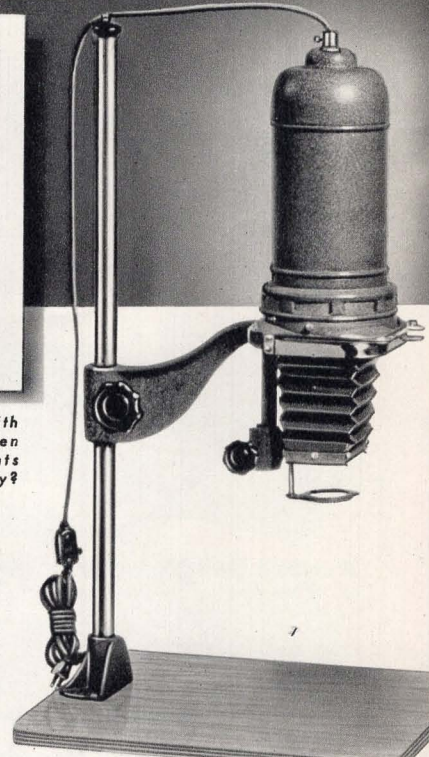
PROJECTS ON FLOOR FOR  
OVERSIZE ENLARGEMENTS



RIGID, SOLID  
METAL CASTINGS



Why Be Content With  
Small Prints When  
Thrilling Big Prints  
Can Be Made So Easily?



**\$14.75**  
Cash

MARVEL JR.

\$2.00 DOWN

\$2.00 MONTHLY

See Page 30

**FEATURES OF REGULAR  
\$30 TO \$45 ENLARGERS**

- Gives clearly detailed, clean-cut enlargements up to 7 Times Negative Size.
- Masks for all negative sizes from 35 mm. to 2 1/4 x 3 3/4 inches
- Complete with sharp anastigmat f:6.3 enlarging lens. 3 1/2-in. focal length.

**\$29.75**  
Cash

WITH LENS

\$3.00 DOWN

\$4.00 MONTHLY

See Page 30

## Marvel—America's No. 1 Enlarger Value!

Equipped with features that experienced darkroom workers want—at an unbelievably low price! Rigid, machined metal castings—a glassless negative carrier that takes single negatives or the full strip without cutting—5 1/2-inch bellows with smooth-operating micrometer-accurate focusing—30-in. removable chromium-plated column, circular in shape so lamphouse can be swung around for projection on floor—and adjustable lamp for perfect illumination!

Enlarges up to 7 diameters on 15x18-in. warp-proof plywood baseboard. Removable lensboard, light-trapped ventilation system. Swinging ruby filter and 75-watt opal enlarging bulb in porcelain socket. Snap switch in cord as shown. Uses 100-120 volt A.C. or D.C. complete with set of masks for all negative sizes from 35 mm. to 2 1/4 x 3 3/4 inches.

### Marvel Jr. Enlarger

With f:6.3 enlarging anastigmat lens. Waterhouse stops. An amazing value! Shpg. wt., 15 lbs.  
3 T 06297.....**\$14.75**

### Marvel Sr. Condenser Enlarger

With f:6.3 lens in iris diaphragm. Plano-convex single-condenser lens illumination system. Shipping weight, 16 pounds.  
3 T 06298.....**\$19.75**

## Marvel Master—Double Condenser Lenses

You'll never know how really good your pictures are—or how much fun photography can be until you've explored the limitless possibilities of enlarging! Making enlargements with the precision-built Marvel Master allows you to give free rein to your natural artistry; gives you greater print control.

The Marvel Master is surprisingly inexpensive, yet is truly an instrument for the serious, advanced darkroom worker. It is equipped with all the features of the Marvel enlargers described at left PLUS the added advantages of a double condenser system, extra-large ventilated lamphouse, and 16x20-in. 7-ply mahogany finish baseboard. Glassless negative carrier with masks for all film sizes up to 2 1/4 x 3 3/4 in. Takes single negatives or the full strip. Uses 100-125-volt A.C. or D. C. Shipping weight, either model, 17 lbs.

### Without Lens

An extremely good value! Would cost \$29.95 for similar quality elsewhere.  
♦ 3 T 06299.....**\$19.75**

### Complete With Lens

With 3 1/2-in. ultra-sharp Wollensak f:4.5 Enlarging Velostigmat in iris diaphragm. An outstanding value!  
♦ 3 T 06284.....**\$29.75**

# EASTMAN, SOLAR ENLARGERS

Sold at Sears on Easy Terms

For Easy Terms  
See Page 30



Items marked ♦  
Shipped from Chicago,  
Phila. or Los Angeles.  
See Page 30 for details.

ONLY \$4 DOWN  
AND \$5 MONTHLY  
ON EASY TERMS **\$39.75**  
Cash or Terms  
With Lens

## New Eclipse 625

The best buy we know of in a truly precise enlarger! Solid metal castings; vital parts machined for absolute accuracy and perfect parallel between negative, lens and baseboard. Extra-sharp Wollensak 4-element lens is your assurance that every detail on the negative will be needle-sharp on the print. Lens is 3½-in. f:4.5 Velostigmat in iris diaphragm. Calibrated swivel head for horizontal or vertical projection and correction of perspective. Counterbalanced head is easily operated. Heavy, internally wired chromium plated upright column. Double condenser system assures maximum brilliance and contrast on your prints. Interchangeable lens feature. Ventilated lamphouse prevents overheating negatives. Glassless negative carrier, masks for all film sizes from 35 mm. to 2¼x3¼ in. Shpg. wt., 30 lbs.

♦3 T 08471T—With lens.  
Cash or Terms..... **\$39.75**

### Kodak Anastigmat Enlarger Lenses

Highly corrected f:4.5 lenses with iris diaphragm. Mounted in lens board to fit Kodak Precision enlarger. Same price, cash or terms. **Postpaid.**

- ♦3 T 8642T—2-inch..... **\$15.00**
- ♦3 T 8643T—3-inch..... **17.50**
- ♦3 T 8644T—4-inch..... **20.00**
- ♦3 T 8449T—6¼-inch..... **37.00**



FOR PRECISION  
ENLARGER

ONLY \$6 DOWN  
AND \$6 MONTHLY  
ON EASY TERMS **\$67.50**  
Cash or Terms  
Less Lens

## Kodak Precision

Not only a deluxe precision-built enlarger, but also adaptable for copying, movie titling, making color separation negatives, and still life photography! Has condenser light system, positive bellows focusing, counterbalanced head, and glassless negative carrier for films 35 mm. to 2¼x3¼ in. Swinging head for wall or floor projection. Interchangeable, matched condenser and projection lenses. With instructions, 100-watt bulb. For 100-125-volt A.C. or D.C. State film size of negative carrier, also condenser for 2, 3, or 4-in. lens. Less lens. See lenses at left. **Postpaid.**

♦3 T 08641T—Cash or Terms... **\$67.50**

### Kodak Precision Model B

Same base and upright as above, but with diffusion type head for negatives up to 4x5½ in., adjustable negative mask. Less lens. **Postpaid.**

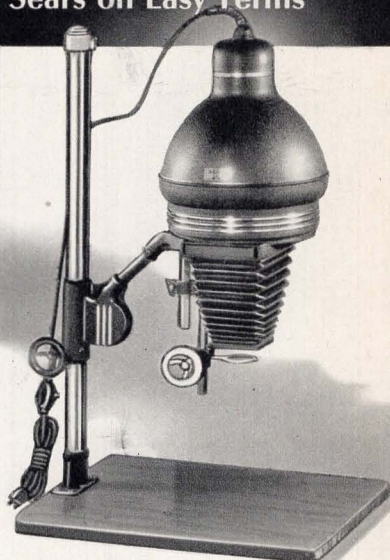
♦3 T 08521T—Cash or Terms... **\$75.00**

4x5½-in. Head only (See small illus.) Fits Model A above. **Postpaid.**

♦3 T8522T—Cash or Terms..... **\$50.00**

Blank Lens Board for Above Models

♦3 T 8664T—Necessary if you use your camera lens. **Postpaid... \$1.00**



ONLY \$5 DOWN  
AND \$5 MONTHLY  
ON EASY TERMS **\$44.55**  
Cash or Terms  
Model 45

## 4x5 and 5x7-inch Solar

Makes enlargements of salon quality. Has highly efficient light system with bi-plane diffusion. Bellows have 12-in. extension and are double adjustable. Glassless negative carrier. Positive focusing. 20x24-in. warp-proof baseboard. For 100 to 125-volt A.C. or D.C. State size of negative carrier wanted.

♦3 T 08636T—Model 45. Takes negatives up to 4x5 in. With lens board but without lens. Shpg. wt., 45 lbs.

Cash or Terms..... **\$44.55**

♦3 T 08637T—Model 57. Same as above except takes negatives up to 5x7-in. Shipping weight, 45 lbs.

Cash or Terms..... **\$47.25**

3 T 08269T—Model 45C. Same as Model 45 above, except has double 6½-in. condenser for greater print brilliance. Shipping weight, 55 lbs.

Cash or Terms..... **\$59.85**



## Wollensak Enlarger Lenses

American-made Wollensak Velostigmat f:4.5 lenses in barre diaphragm. Expertly ground to famous Tessar formula; make prints of extreme sharpness and brilliance. Shpg. wt., each, 10 oz.

- ♦3 T 6812—2-in. for 35 mm, \$15.00 value..... **\$11.95**
- ♦3 T 6819—3-in. for 2¼x2¼, \$18.50 value..... **14.95**
- ♦3 T 6254—3½-in. for 2¼x3¼, \$23.50 value..... **17.95**
- ♦3 T 6220—5-in. for 3¼x4¼, \$27.50 value..... **21.95**
- ♦3 T 8450—6½-in. for 4x5, \$40.00 value..... **32.95**

## Enlarging Bulbs

Opal-white. Give off a rich, blue light, 100-light, 100- to 125-volts. Genuine Mazda. Fit standard enlargers. **Postpaid.**

3 T 6845—75-Watt..... **25c**

3 T 6846—150-Watt..... **25c**

## Automatic Timer

Time and money saver! Plug enlarger into timer, set the dial to the exposure you want, and touch the button. Turns the enlarger on and off automatically. Ideal for test strips, dodging, or multiple prints.

♦3 T 8451—Shpg. wt., 6 lbs... **\$11.95**

**PAGE 23..... CAMERA BOOK**



# PROFESSIONAL

## Marvel Printer



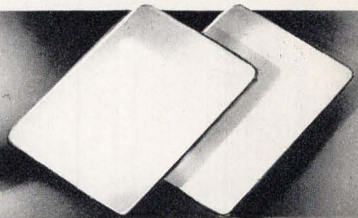
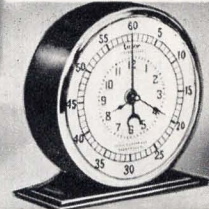
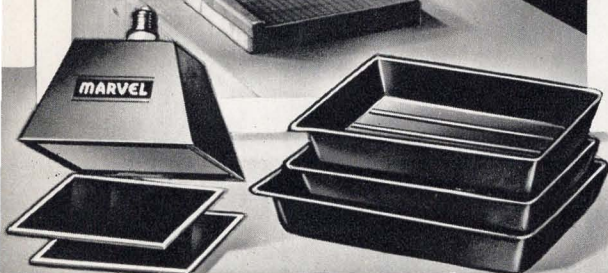
~~\$7.50~~ Quality Elsewhere  
~~\$15.00~~ Quality Elsewhere  
**\$4.95** **\$9.95**

4x5-Inch Size      5x7-Inch Size

- Automatic—white light turns on only when handle is down—no danger of fogging unexposed paper.
- Built-in red safelight; 2 printing light sockets.

Lowest prices we know of for printers of this professional quality! Cuts contact printing time and work in half. Safelight serves as general darkroom light; 4 movable bands center any size negatives up to limit; give even, white squared-up borders on prints. Rules on sides. Wood case, brass hardware, solid porcelain sockets. Bulbs not included. Shipping weights, 8 pounds and 12 pounds.

**3 T 6292**—For negatives up to 4x5 in. . . . **\$4.95**      **3 T 6293**—For negatives up to 5x7-in. . . . **\$9.95**



### Marvel Safelight

\$2.98 quality elsewhere! Proper light; no fogging of film or paper. Two slides: Yellow-Amber for contact and enlarging paper, Red for orthochromatic films and Varigam paper. Light-tight steel construction; gray crackle enamel finish, porcelain socket—Screws into standard light socket. Uses 10-watt standard inside frosted bulb (not included). Shipping weight, 2 pounds.

**3 T 8629**—5x7-in. size. . . . **\$1.69**

### Rubber Trays

Don't ruin fine pictures . . . use chemically inert trays. Acid-resistant, with pouring lip. Fine quality rubber, reinforced rims and bottoms. Shipping weights, 1 lb. 8 oz.; 2 lbs. 10 oz., and 5 lbs. 4 oz.

**3 T 6277**—5x7-in. size. Each. **.49c**      3 for. **\$.139**  
**3 T 6278**—8x10-in. size. Each. **.79c**      3 for. **\$.219**  
**3 T 6279**—11x14-in. size. Each. **\$1.59**      3 for. **\$.429**

### Dark Room Timer

Good pictures depend on accurate exposure and development. You can rely on this fine clock for split-second accuracy. Has regular minute and hour hands and full sweep second hand. Dependable 30-hour movement in baked enamel case with nickel trim. Heavy, non-tip base. Case is 4 inches in diameter. Shipping wt., 1 lb.

**3 T 6816** . . . . . **\$2.79**

### Ferrotypes Plates

Chrome-plated steel plates. No polish required; use soap and water. Shpg. wts., 10 oz. and 2 lbs.

**3 T 8613**—10x14-in. Each. . . . **.55c**  
**3 T 08614**—18x24-in. Ea. . . . **\$1.98**

**4-inch Print Roller**  
 To roll out prints on ferrotypes print. Assures high gloss on print. Shpg. wt., 9 oz.  
**3 T 6894** . . . . . **29c**

**Ferrotypes Polish**  
 For use with enamel plates. 2-oz. bottle. Shpg. wt., 6 oz.  
**3 T 6859** . . . . . **19c**



### Blotter Book

Prints dry flat. Hypo-free blotters. Wax paper interleaves. Takes 34 8x10 in. prints. Shpg. wt., 1 lb.  
**3 T 8627** . . . . . **59c**

**Photo Blotters**  
 Pack of 20 hypo-free, lintless, 9x12-inch blotters. Shipping weight, 1 pound.  
**3 T 8452** . . . . . **29c**

### Print Tongs

Keep your hands free from stain; your prints perfectly clean! New, unbreakable plastic tongs with positive hand grip and non-slip ends. Chemical-resistant. For better results in your dark room work! 1 red tong, 1 black. **Postpaid.**  
**3 T 8698**—2 tongs. . . . **58c**

### Film Washer

Definitely cuts your washing time in half! Patented washer takes film on the reel direct from the developing tank. Assures complete removal of hypo without fuss or bother. Fits all standard film tank reels. Shpg. wt., 1 lb.  
**3 T 8453** . . . . . **98c**

### Film Squeegee

**(A)** Removes water from film. Will not scratch. Dries both sides at once. Rubber sponges, stainless steel handle. Shpg. wt. 10 oz.  
**3 T 8699** . . . . . **59c**  
**(B) F-R Squeegee**  
 With fine pore duPont cellulose sponges. **Postpaid.**  
**3 T 6830** . . . . . **\$1.00**

### Sponge

Best quality fine grained duPont cellulose sponge for removing water from prints and films. Absorbent and long-wearing. Can't possibly injure surface. Size, about 1 1/2 x 3 x 5 in. Order several to complete your darkroom!  
 Shpg. wt., 4 oz.  
**3 T 6207** . . . . . **32c**



# QUALITY DARKROOM EQUIPMENT

## Marvel Developing Tanks



### MARVEL Jr. Tank

Designed for efficiency, built to last, and priced to save. Economical; uses only 16 oz. solution. For film sizes 35 mm. to 116. Stainless steel reel lock accurately spaces film-holding flanges; won't loosen. Chemical-resistant Bakelite. Shipping wt., 1 lb. 4 oz.

3 T 6231.....\$1.59

### MARVEL Sr. Tank

- Breakage-resistant Bakelite
- Adjustable for 5 film sizes
- Full 32-oz. size
- Sturdy, positive-locking reel

\$239

Our deluxe roll film tank. Costs slightly more than tanks of lesser quality, but worth every cent of the difference! Special Bakelite for warp-and-breakage resistance; locking cover accurately tooled. Merely load tank in dark, put cover on—and develop, wash and fix film in full light. Reel adjustable for 35mm., 828, 127, 120, 620, 116, 616 film. 5 1/2 in. diameter, 4 3/4 in. high. Shipping wt., 1 lb. 4 oz.

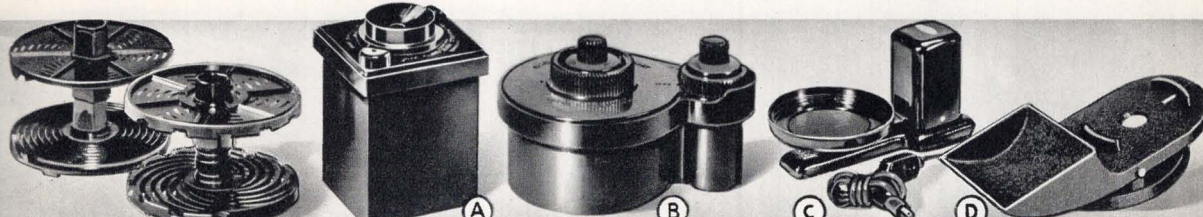
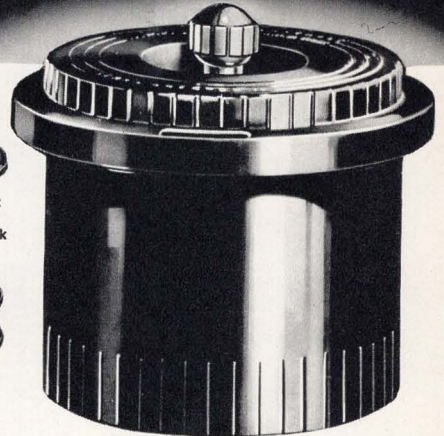
3 T 6230.....\$2.39



Light-Tight  
Dust-Tight  
Bayonet-Lock  
Cover



Adjustable  
Locking  
Reel



### Extra Reel

Don't wait for your only reel to dry before you can develop another film! Same construction as furnished with tank above. Fits 3T6230 tank only.

98c

3 T 6235—Shpg. wt., 8 oz. .... 98c

### Cut Film Reel

Adapt your tank so that you can use it with cut film or packs! Takes 12 films up to 6.5x9 cm. or 2 1/4x3 1/4 in. Fits 3 T 6230 tank above and most standard 32-oz. tanks. Shipping wt., 8 oz.

3 T 6252.....\$1.79

### F-R Cut Film Tank

**A** Square shaped daylight developing tank for film packs and cut film. Special Bakelite construction—will not rust, stain or corrode. Easily loaded; films are held firmly in place. Light tight. Adjustable from vest pocket size to 4x5 inches or 10x12.5 cm. Will develop, fix and wash 12 films at a time. Shipped from Chicago, Phila or Los Angeles. See Page 30 for details. Shpg. wt., 3 lbs.

\$539

♦ 3 T 8649.....\$5.39

### Day-Load Tank

**B** East-made. Develop your 35mm. films without a darkroom! Insert film cartridge in tank, turn knob; film passes into solution. Black Bakelite. Quart-size DK-20 developer included. Shipped from Chicago, Phila. or Los Angeles. See Page 30. Shpg. wt., 2 lbs.

\$629

♦ 3 T 6244.....\$6.29

### Tank Agitator

**C** Provides constant, uniform agitation; cuts developing time. Underwriters' Approved. For all standard roll film and some cut film tanks. Just plug in, press switch. Shpg. wt., 3 lbs. 4 oz.

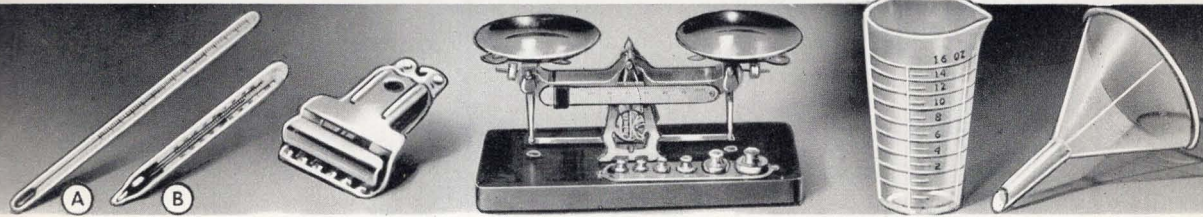
\$359

3 T 8605.....\$3.59

### Tank Agitator

**D** Place entire unit in sink; run water in reservoir, automatically causes agitation. Shpg. wt., 2 lbs. 4 oz.

3 T 8604.....\$3.59



### Thermometers

Accurate, clearly marked. Two handtypes. Shpg. wts., 5oz. and 6oz.

25c

**A** Floating Type  
Use in tray or with film tank.

3 T 6815.....25c

**B** Laboratory Type  
9 in. long. Extremely accurate. Fits all film tanks.

3 T 6883.....69c

### Film Clips

Stainless metal clips with bright finish. Hold firmly, yet will not damage the most delicate film. Hooks in end for hanging up conveniently. Many other uses around the house, too. Shipping wt., pair, 4 oz.

18c

3 T 8606.....18c

### Eastman Scales

For those who mix their own chemicals. Extremely accurate! Made by Eastman. Nickel plated; mahogany base. Adjustable. Weighs from 1 grain to 2 ounces. State choice, Avoirdupois (grains and ounces) or Metric (grams) type. Shpg. wt., each, 4 lbs.

\$395

3 T 8606—Avoirdupois  
3 T 8607—Metric.....\$3.95

### Graduates

Clear, heavy glass. Accurately marked, easily read.

19c

**3 T 6855—8 oz.**  
Shipping weight, 1 lb. 9 oz. .... 19c  
**3 T 6856—16 oz.**  
Shipping weight, 2 pounds.....25c  
**3 T 6274—32 oz.**  
Shipping weight, 2 lbs. 8 oz. .... 49c

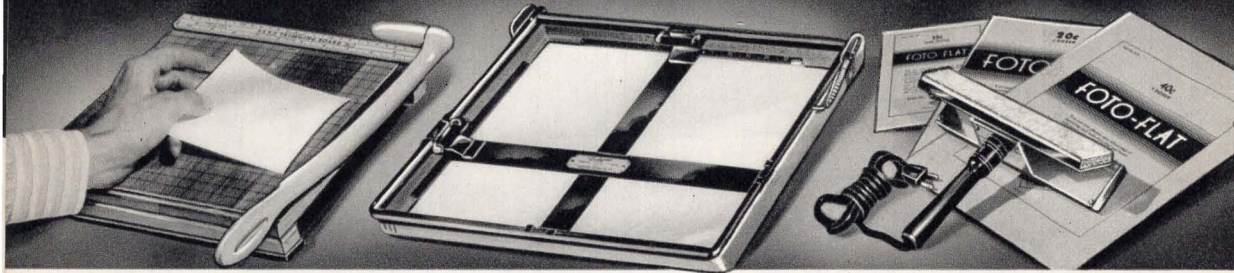
### Funnel

Made of strong clear transparent plastic. Will not break if dropped! Fast pouring neck speeds up work. Avoid spilling. Not affected by photo solutions; will not affect developers. Pint size, just right for darkroom use. Shipping weight, 8 ounces.

55c

3 T 8608.....55c

# LATEST PROFESSIONAL-TYPE EQUIPMENT



## Trimming Boards

Strong, self-sharpening tool steel blade cuts clean; leaves no sharp edges. End rule for accurate measurements. Quality hardwood, clear varnished.

**\$2.29**  
Up

◆ 3 T 6804—6-inch blade. Shpg. wt., 2 lbs. 11 oz. .... **\$2.29**  
◆ 3 T 6807—8-inch blade. Shpg. wt., 4 lbs. 10 oz. .... **2.69**  
◆ 3 T 6811—10-inch blade. Shpg. wt., 8 lbs. 8 oz. .... **3.39**

## Eclipse Enlarging Easel

A heavy, beautiful easel. Special washable, chemical-resistant, no-glare, white focusing surface. Won't scratch or chip. Frame remains raised while paper is being inserted. Bottom covered with non-slip ribbed rubber. Adjustable clock spring steel masking blades. Borders adjustable from 1/8 to 3/4 in. Scaled to take any print size up to 11x14 in. A professional-type easel for exacting work.

**\$7.95**

3 T 8297—Shpg. wt., 8 lbs. 11 oz. . **\$7.95**

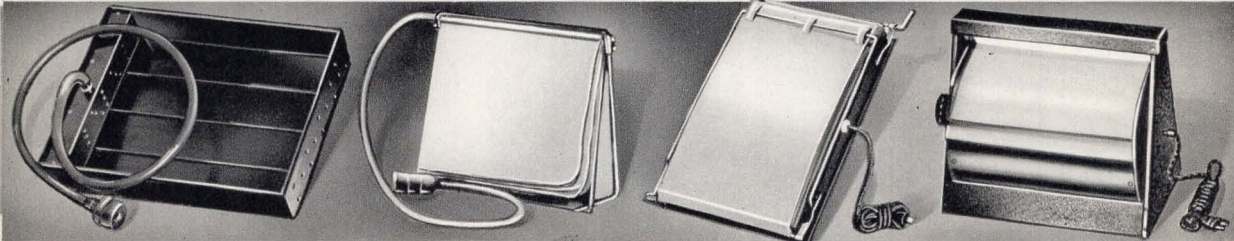
## Fotowelder . . . Foto-flat

New Foto-flat dry-mount tissue holds prints to any surface. Not sticky. Apply with Fotowelder or flat iron with heat control. Instructions. **Postpaid.**

**15c**  
Up

3 T 8444—5x7-in. size. Doz. .... **15c**  
3 T 8445—8x10-in. size. Doz. .... **20c**  
3 T 8446—11x14-in. size. Doz. .... **40c**

**Fotowelder.** For use with Foto-flat. Thermostatic heat control. 110 volts.  
3 T 8447—10 in. wide. **Postpaid. . . . \$9.50**



## Photrix Print Washer

Helps prevent ruined prints due to oxidation of unremoved hypo. Washes back and front as prints are suspended in running water. 14 jets of water assure a thorough cleansing job. Takes prints up to 8x10 in. Chemical resistant Bakelite. 3 ft. black rubber hose; universal faucet connection. Shpg. wt., 5 lbs.

**\$2.69**

3 T 8610 . . . . . **\$2.69**

## New Nikon Washer

Just place prints between fabric leaves; uniform flow of water washes away hypo. No attention necessary! Stainless steel frame; folds flat when not in use. Takes up to 15 full size prints, more smaller ones. Shpg. wts., 4 lbs. and 6 lbs.

**\$4.29**  
Up

3 T 8670—8x10-in. . . . **\$4.29**  
3 T 8671—11x14-in. . . . **\$6.98**

## Arkay Dryer

Dries prints perfectly flat. Aluminum enameled platens heated by radiation. No overheating! Use with or without ferrotype plates.

**\$6.29**  
Up

◆ 3 T 8620 — 12 1/4 x 16 1/4-inch platen. Takes up to 11x14-inch prints. Shpg. wt., 11 lbs. . . . **\$6.29**  
◆ 3 T 8621 — 14 1/2 x 19 1/2-inch platen. Up to 13x17-inch prints. Wt., 15 lbs. **\$8.98**

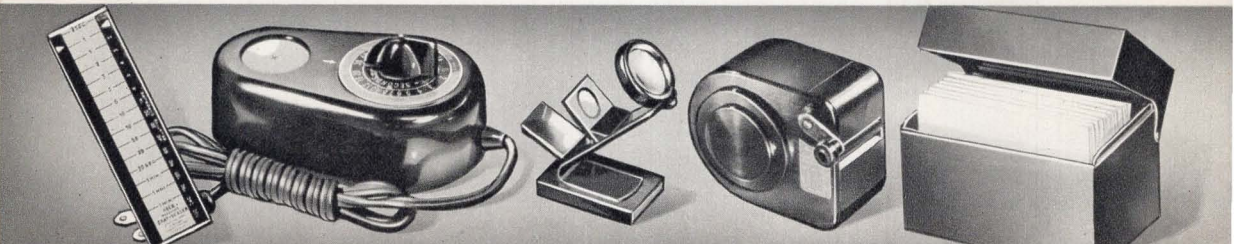
## Roto Print Dryer

Dries matte prints or ferrotypes glossies on chromium plated cylinder in 4 to 8 minutes. Heating element guaranteed 5 years by manufacturer. For 100-125 volt A.C. or D.C.

**\$8.98**  
Up

3 T 08634 — 12x28-in. surface. Wt., 12 lbs. . . . **\$8.98**  
◆ 3 T 08611—Professional size. 24x28-in. surface. Shpg. wt., 20 lbs. . . . **\$17.98**

Items marked ◆ shipped from Chicago, Philadelphia or Los Angeles. See Page 30 for complete details.



## Enlargometer

Complete with Scaler. A real money saver! Improves prints. Tells exposure time to use, selects the proper grade of paper for each negative. Gray scaler makes it possible to print any part of picture exact shade wanted. Gives exact dodging times. For 100-125 volt A.C. or D.C.

**\$4.69**

3 T 8655—Shpg. wt., 14 oz. **\$4.69**

## See-Sharp

Helps eliminate inaccuracies in focusing when making enlargements. Brightens and magnifies a portion of the image projected on the sensitized paper, permitting fast, extra sharp focusing. Saves costly mistakes. Use with any vertical enlarger. Shipping weight, 4 ounces.

**\$1.79**

3 T 8646 . . . . . **\$1.79**

## Bulk Film Winder

Save money by buying film in bulk (see Page 10) and using this film winder to load your cartridges. Get the maximum number of exposures even in daylight. Case holds up to 100-ft. roll of bulk 35 mm. film. Streamlined composition case is break-resistant. Shpg. wt., 1 lb.

**\$2.98**

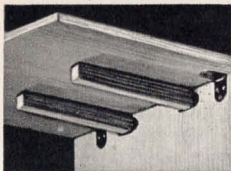
3 T 8672 . . . . . **\$2.98**

## New Negative File

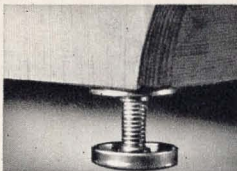
Stop losing negatives just for the lack of a place to keep them. This inexpensive steel file with 100 cellophane envelopes keeps your negatives clean and free from scratches. Takes single negatives up to 4x5 in. Cellophane envelopes permit view of negative without handling. Shpg. wt., 1 lb.

**\$1.09**

3 T 8448 . . . . . **\$1.09**



Drop leaf supported by 2 rigid, disappearing beams



Adjustable leveling screws keep work top always level

Only \$2 Down  
on Easy Terms  
See Page 30

**\$9<sup>95</sup>**  
CASH

**Designed by Photographers . . .  
for Photographers!**

- Not just another piece of furniture, but a brand new, specially designed cabinet for the darkroom!
- Drop leaf doubles top space when in position!
- Recessed bottom . . . gives you plenty of toe room!
- Spring door paper compartment! Closes itself!
- Cabinet space for chemicals, trays, equipment!
- Comes unassembled to save you assembly and freight charges. Easy to put together . . . fun, too!

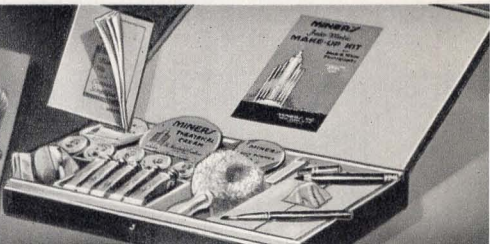
Once again Sears bring you something brand new in darkroom equipment. We analyzed your space problems for darkroom working efficiency, told our designers just what you needed . . . and they gave us this compact, supremely efficient cabinet. Just what you need to bring much-needed order, speed and system into your darkroom work. Sears new cabinet has a place for everything so that you won't lose a second's time in finding your trays, chemicals and other needs. You'll be able to work faster and better because you will have all your equipment right at your fingertips.

Sturdy cabinet has large, 21x24-inch top working surface. Also 21x29 1/4-inch leaf, which can be attached to either side of cabinet, more than doubles the top area! Leaf attaches firmly with steel hinges, and is supported by two strong pull-out beams when in use. Spring door opens downward, exposing 4-section paper compartment. 2-door cabinet section at bottom provides space for up to one gallon size bottles of chemicals, trays up to 11x14-in. size, dry chemicals and other equipment. Not a single inch of space is wasted!

Base is recessed at bottom to give you plenty of toe room while you're working. Special leveling screws, one at each corner of base, allow you to keep top in a perfectly horizontal plane regardless of irregularities of the darkroom floor. Overall size, assembled, 21x24x32 inches. All hardware is cadmium plated. Cabinet is shipped taken apart in order to save you assembly and freight charges. Hardware and instructions for assembling are included.

**3 T 8659**—Shipping weight, 85 pounds. . . . . **\$9.95**

Sears New, Exclusive  
**DARKROOM  
CABINET**



**Hampden's Panchromatic Make-up Kit**

You'll be able to perform the same sort of magic that professionals do . . . actually create beauty where it never existed before! Makes costly retouching a thing of the past. Patterned after the make-up kits used by world-famous photographers. Easy-to-use with detailed instructions included.

Kit contains 5 photographically correct flesh tints; 1 shadow; 1 lip rouge; 1 lip brush; 1 eyebrow pencil; 3 face powders and puff. With Hampden's kit any photographer can create smooth, flattering skin tones, modify irregular features, even eliminate harsh lines and wrinkles.

**3 T 8460**—Shipping weight, 1 pound. . . . . **\$1.39**

**Miner Make-up Kit**

The beautiful results that you so admire in the work of professional photographers are nearly all achieved with the use of make-up! Get these flattering results yourself! 19 materials, including large supplies of foundation cream, lip make-up, shadowing colors, eye shadow. For any complexion.

Complete, illustrated instruction book included; written by experts, but in plain, everyday language, so that everyone can understand and follow it. For Hollywood-like portraits, use the same method their ace cameramen use . . . correctly applied make-up!

**3 T 8673**—Postpaid. . . . . **\$2.50**

It's easy to buy your photographic needs on Sears Easy Terms. See Page 30 for details.



Price Reduced on  
Finest Quality  
**MARVEL  
ACID HYPO**

ONLY **14½¢** Per lb.  
In 2-lb. Lots

**25¢** Quality Elsewhere

Top quality . . . was 19¢! Pure, full strength solution for fixing and hardening of negatives and prints. Prevents fading, stains, deterioration. 1-lb. package makes ½ gallon. Shpg. wts., 1-lb. pkg., 1 lb. 9 oz.; 2 packages, 2 lbs. 10 oz.

**3 T 6875**—One-pound pkg . . . . . **17¢** Two pkgs. for . . . **29¢**



**DEVELOCHROME**

**75¢** Each  
Develochrome . . . the newest sensation! Color-tones as it develops. Gives your prints the beauty of color toning with the ease of making a black and white print! You can use only one color; or by blending produce any shade of color in the spectrum . . . or you can add to the richness of black and white prints by toning them very slightly! One 4-ounce bottle makes approximately 48 8x10-inch prints. Toner can be used only with Develochrome Developer. **Colors: red, blue, yellow, snow blue, sea green, sepia. State color. Postpaid.**

**3 T 8472** Develochrome Developer . . . . . **75¢**  
**3 T 8473** Toning Colors—4-ounce bottle . . . . . **75¢**

*Similar Quality ⅓ More Elsewhere!*



**MARVEL**  
Paper Developer

**19¢** Quart Size

25¢ and 35¢ for similar quality elsewhere! Excellent with all contact and enlarging papers. May also be used for film development. Shipping weights, 10 oz. and 1 lb.  
**3 T 8691**—1-qt. size. Makes up to 4 qts. working solution. . . . **19¢**  
**3 T 8692** ½-gal. size. Makes up to 8 qts. working solution. . . **29¢**



**MARVEL**  
Film Developer

**19¢** Quart Size

Absolutely top quality film developer. Similar quality elsewhere 25¢ and 35¢! Medium fine grain—may be used for all films. For maximum shadow detail and suitable fine grain; no emulsion speed loss—use in tray, open or closed tank. Shpg. wts., 6 oz. and 13 oz.  
**3 T 8696**—1-qt. size. . . . **19¢**  
**3 T 8697**—½-gal size. . . . . **29¢**



**MARVEL**  
Ultra-Fine Developer

**69¢**

Develops films to microscopic fine grain for enlargements up to 30 diameters . . . yet produces brilliant negatives! Physio-chemical type. No loss of film speed; works in any fluid temperature 60° to 80° Fahr. Makes one quart, develops up to 20 rolls of film. Shipping weight, 8 oz.  
**3 T 6260** . . . . . **69¢**



**MARVEL**  
Short Stop

**19¢**

Fine acid short stop for films or prints. Use between developer and hypo—stops development instantly, saves hypo, helps prevent stains. Powder form. Mixes with water to make 16 quarts solution. Wt., 1 lb. 9 oz.  
**3 T 8474** . . . . . **19¢**



**MARVEL**  
Film Hardener

**29¢**

Stops softening, frilling and reticulation of negatives. Makes negatives practically scratch-proof. Save money by using this high-quality product. Quantity to make 16 quarts of solution. Shipping wt., 1 lb. 9 oz.  
**3 T 8475** . . . . . **29¢**



**Mansfield Color Toners**

For extra beauty and appeal . . . match the color of your print to the mood of your picture! After final wash, dip prints into solution made by adding a small amount of toner to water. Variation in tone is determined by time prints are left in solution. Each bottle contains 3 ounces. Sells for 55¢ each elsewhere. Shipping weight, each, 8 ounces.

- 3 T 8680**—Sepia. . . . . **45¢**
- 3 T 8681**—Blue. . . . . **45¢**
- 3 T 8478**—Red. . . . . **45¢**
- 3 T 8682**—Green. . . . . **45¢**
- 3 T 8683**—Magenta. . . . . **45¢**
- 3 T 8479**—Yellow. . . . . **45¢**

**Agfa Flemish Toner.** Formerly called Flemish Gold Toner. Sufficient for several hundred 5x7-in prints.  
**3 T 8684**—Shipping weight, 6 ounces. . . . . **98¢**



**Retouching Fluid**

For a perfect retouching surface. Can be used on all films. 1-ounce size.  
**3 T 8631**—Shpg. wt., 4 oz. . . . **49¢**

**Alvord's Opaque**  
For blocking out unwanted portions of negative. Easy to use. Dries quickly, without flaking; washes off without stain. 2½-ounce jar. Shipping weight, 6 ounces.  
**3 T 8632** . . . . . **45¢**



**Agfa Reducer**

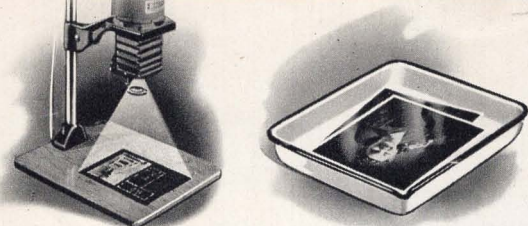
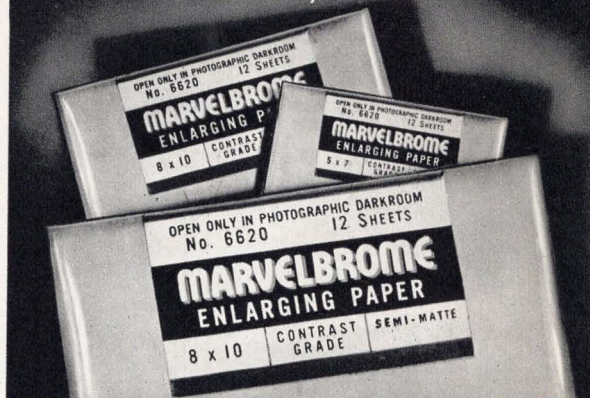
Aids correct printing. Lessens density of over exposed negatives. Shipping weight, 6 ounces.  
**3 T 8685** . . . . . **23¢**

**Agfa Intensifier**  
Builds up negatives, increases contrast. 2-oz. bottle makes 20-oz. solution. Shipping weight, 6 oz.  
**3 T 8686** . . . . . **45¢**



# MARVELBROME ENLARGING PAPER

Same Quality Elsewhere  
Costs 20% More



Wide Latitude Compensates  
for Over or Under-Exposure.

Marvelbrome Will Stand Force  
Development Without Fog.

## MARVELBROME Enlarging Paper

Finest Quality.. Saves Paper, Saves Money!

Enlarge your best negatives on Marvelbrome—you'll be proud of the results! We think Marvelbrome is the finest paper we've ever seen—even finer than nationally-known, higher-priced brands! Long tonal range, from deepest, snappiest blacks to purest whites! Extra-rich, high-speed emulsion has "safety" features, too, that save paper and number of make-over prints! **Single weight:** Glossy or semi-matte surfaces. **Double weight:** Glossy, semi-matte and lustre surfaces. All in normal (No. 2), medium hard (No. 3) or contrast (No. 4) grades. **State surface, grade, size and quantity wanted.**

**28c**

Single Weight  
12 Sheets  
5x7 inches

	Size	12 Sheets	Shpg. Wts.	36 Sheets	Shpg. Wts.
3 T 6620 Single weight	5x7	28c	4 oz.	\$0.69	12 oz.
	8x10	59c	6 oz.	1.69	1 lb. 4 oz.
3 T 6621 Double weight	5x7	35c	6 oz.	.98	1 lb. 4 oz.
	8x10	75c	9 oz.	2.09	1 lb. 10 oz.
	11x14	\$1.39	1 lb. 4 oz.	3.98	3 lbs. 8 oz.



## Agfa Brovira Paper

Warm-toned, fast bromide paper. Favored by many well known photographers for its wide latitude, good contrast control and long tonal range. For portraits, pictorial and general work. Sears prices save you 10%! Glossy or velvet surfaces; normal, medium hard or contrast grades.

**32c**  
Up

3 T 6604—Single Weight  
3 T 6605—Double Weight

When ordering, state catalog number, surface, contrast grade, size and quantity wanted.

SINGLE WEIGHT	12 Sheets	Shipping Weight	72 Sheets	Shipping Weight
5x7 in.	32c	4 oz.	\$1.59	1 lb. 8 oz.
8x10 in.	69c	6 oz.	3.55	2 lbs. 4 oz.
11x14 in.	\$1.26	1 lb.	6.66	4 lbs.

## Eastman Kodabromide

Formerly Kodabrom. Good gradation, wide latitude... for varying exposure development conditions. For all-around work.

**32c**  
Up

3 T 6611—Single Weight  
In glossy or smooth lustre surfaces. Normal, medium hard or contrast grades.

3 T 6612—Double Weight  
Glossy, semi-matte, lustre surfaces. Normal, medium hard or contrast grades.

DOUBLE WEIGHT	12 Sheets	Shipping Weight	72 Sheets	Shipping Weight
5x7 in.	39c	6 oz.	\$1.98	2 lbs. 4 oz.
8x10 in.	86c	8 oz.	4.45	3 lbs. 6 oz.
11x14 in.	\$1.58	1 lb. 4 oz.	8.33	6 lbs.

## Varigam Enlarging Paper

With this enlarging paper you can get any degree of contrast you wish, merely by using the correct filter. Reduces the amount of paper it is now necessary to keep on hand. Blue and yellow gelatin filters included with every package. State catalog number, size and surface.

**32c**  
Up

3 T 6613—SINGLE WEIGHT

Size, In.	12 Sheets	Shpg. Wt.	Surface
5x7	32c	4 oz.	Blue white
8x10	69c	6 oz.	Glossy only

3 T 6614—DOUBLE WEIGHT

Size, In.	Shpg. Wt.	Surface
5x7	39c	Glossy, lustre, or, semi-glossy
8x10	86c	



**14c**  
Up

## Eastman Velox Paper

Comes in single weight; normal emulsion. Order by catalog number and size.

3 T 6602—Glossy

3 T 6603—Velvet

Normal Emulsion only			Shpg. Wt.		
Size, In.	2 Doz.	Gross	2 Doz.	Gross	
1 1/2 x 2 3/4	14c	\$0.47	2 oz.	8 oz.	
2 1/2 x 3 1/2	18c	.53	3 oz.	8 oz.	
2 1/2 x 3 1/2	18c	.63	3 oz.	8 oz.	
3 1/4 x 4 1/2	23c	.81	3 oz.	10 oz.	
3 1/4 x 4 1/2	23c	.90	4 oz.	13 oz.	
2 1/2 x 4 7/8	24c	.95	4 oz.	13 oz.	
4x5	28c	1.33	5 oz.	1 lb. 2 oz.	
3 1/4 x 5 1/2	24c	1.19	4 oz.	1 lb.	

## MARVEL Contact Print Paper



## Finer Prints at a Saving With Marvel Paper

Compares with the finest of nationally known brands. Available at these big savings! Order normal emulsion for normal negatives. Contrast for flat negatives. Glossy or velvet surface. **State size, quantity and emulsion wanted when ordering.**

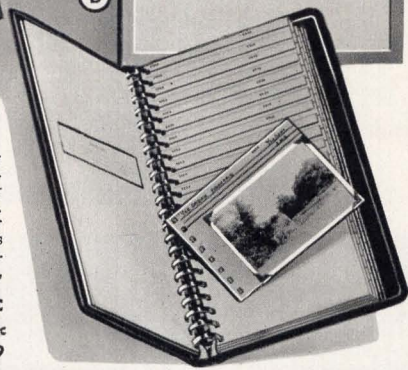
**12c**  
Up

3 T 6600—Glossy

3 T 6601—Velvet

Normal or Contrast				Shpg. Wt.		Normal or Contrast				Shpg. Wt.	
Size, In.	2 Doz.	Gross	2 Doz.	Gross	Size, In.	2 Doz.	Gross	2 Doz.	Gross		
1 1/2 x 2 3/4	12c	\$0.43	2 oz.	6 oz.	2 1/2 x 4 7/8	21c	\$0.85	4 oz.	13 oz.		
2 1/2 x 2 1/2	17c	.53	3 oz.	8 oz.	4x5	26c	1.19	5 oz.	1 lb. 2 oz.		
2 1/2 x 3 1/2	17c	.60	3 oz.	8 oz.	3 1/4 x 5 1/2	21c	1.07	4 oz.	1 lb.		
2 3/4 x 4 1/2	17c	.77	3 oz.	11 oz.	Postcards	26c	1.45	6 oz.	1 lb. 3 oz.		
3 1/4 x 4 1/4	21c	.85	4 oz.	13 oz.	5x7	43c	1.98	9 oz.	1 lb. 15 oz.		

# Sears Distinctive MOUNTS, PORTFOLIOS



## Album for Enlargements

**45c**

5x7-inch

Requires no heat, no glue or paste—just a few finger-smoothing strokes and your print is perfectly mounted. Every page opens flat. Your favorite enlargement becomes the cover, fully protected by heavy celluloid. Holds 30 prints. Shpg. wts., 8 oz., 12 oz., 1 lb.

- 3 T 6546—5x7-inch print size..... **45c**
- 3 T 6547—8x10-inch print size..... **95c**
- 3 T 6548—11x14-inch print size..... **\$1.89**

## Exhibition Mat Mounts

3 for **49c** **(A)** Ivory tone, 16x20-in. size. Heavy board back, die-cut front. **State choice** of upright or horizontal opening. Shipping wts., of 3, 2 lbs.; of 12, 8 lbs.  
**3 T 6295**—For 8x10-in. prints.  
**3 T 6296**—For 11x14-in. prints.  
**12 for \$1.89**      **3 for 49c**

## Exhibition Frames

**(B)** For all 16x20-in. mounts. Glued, fitted and sanded, with backing cardboard. May be painted or stained. Shpg. wt., 3, 3 lbs.  
**3 T 6515**—3 frames..... **\$1.19**

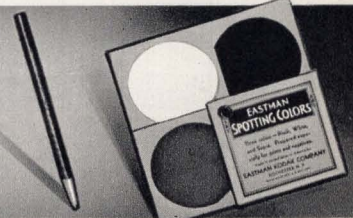
## Salon Mounting Boards

(Not shown). Standard 16x20-in. size. Ivory textured. Shpg. wts., 3, 2 lbs.; 12, 7 lbs.  
**3 T 6209**—3 for..... **33c**  
**12 for only..... \$1.25**

## Nega-Print Album

**79c**  
Special

Similar quality elsewhere \$1! For snapshots and negatives. Keep them in this attractive loose leaf album. Prints are mounted on outside of envelopes, extra prints and negatives placed inside. Space for titles on envelopes. Holds 60 pictures up to 3½x4¼ in. Size closed, 11½x6½ in. Fiber-tex binding, Brown or Blue. **State choice.**  
**3 T 6539**—Shpg. wt., 1 lb. 8 oz. **79c**



## Photo Coloring Oils

Big 15-tube set. Turpentine, marlene, medium, dryer, extender, cotton, sticks, glass palette. Instructions.  
**3 T 6282**—Shpg. wt., 2 lbs. 8 oz..... **\$3.59**

## Special Print Spotting Pencil

For retouching and detail work. Made of carbon—won't shine on print.  
**3 T 8635**—Shipping weight, 2 oz..... **15c**

## Rubber Cement

Ideal for all photographic work. No more messy, spotted mounts... use rubber cement like most photographers. Excess rubs off. Quick-drying, sure-sticking. Non-inflammable. Full quart can. A good value at this low price. Shipping weight, 3 pounds.  
**3 T 8675**..... **89c**

## Eastman Spotting Colors

For prints or negatives. Black, White and Sepia. Merely moisten and touch up with brush. Shipping weight, 3 oz.  
**3 T 8688**—Set of 3 colors above..... **25c**

## Brush for Colors Above

Round Red Sable brush with nicked ferrule. Number 2 size.  
**3 T 5175**—Shipping weight, 2 oz..... **13c**

## SEARS EASY TERMS

A little down and a little each month will purchase any order of \$10 or more. List the items you want on easy payment side of order blank. Refer to table at right for TERMS. Due to standard practice in the sale of many items in this catalog they are sold the same for cash or terms. On these items, do not add a carrying charge.

### Shipping Information

All items marked **♦** shipped from Chicago or Philadelphia or Los Angeles. Order and pay postage from nearest Mail Order House. Where item is marked **Postpaid**, we pay all transportation charges.

### Important About Prices

Should the federal government or any State increase by taxes, or otherwise, the cost or selling price of any item in this catalog—we reserve the right to add any such increased cost to prices in this book.

If Cash Price of Order Amounts to	Add as Carrying Charge	Send With Order	Amount Payable Monthly
\$10.00 to \$11.00	\$1.00		
11.01 to 12.00	1.00	\$200	\$200
12.01 to 13.00	1.05		
13.01 to 14.00	1.15		
14.01 to 15.00	1.25		
15.01 to 16.00	1.35		
16.01 to 17.00	1.45		
17.01 to 18.00	1.50	\$250	\$300
18.01 to 19.00	1.60		
19.01 to 20.00	1.70		
20.01 to 21.00	1.80		
21.01 to 22.00	1.90		
22.01 to 24.00	2.00		
24.01 to 26.00	2.20		
26.01 to 28.00	2.40		
28.01 to 30.00	2.60		
30.01 to 32.00	2.70	\$400	\$500
32.01 to 34.00	2.90		
34.01 to 36.00	3.10		
36.01 to 38.00	3.30		
38.01 to 40.00	3.50		
40.01 to 42.50	3.65		
42.51 to 45.00	3.90		
45.01 to 47.50	4.15		
47.51 to 50.00	4.40		

If Cash Price of Order Amounts to	Add as Carrying Charge	Send With Order	Amount Payable Monthly
\$50.01 to \$52.50	\$4.65	\$500	\$500
52.51 to 55.00	4.90		
55.01 to 57.50	5.15		
57.51 to 60.00	5.30	\$600	\$600
60.01 to 65.00	5.65		
65.01 to 70.00	6.15		
70.01 to 75.00	6.55	\$700	\$700
75.01 to 80.00	7.05		
80.01 to 85.00	7.55		
85.01 to 90.00	7.95	\$800	\$800
90.01 to 95.00	8.45		
95.01 to 100.00	8.95		
100.01 to 110.00	9.50	\$1000	\$900
110.01 to 120.00	10.50		
120.01 to 130.00	11.50		
130.01 to 140.00	12.25	\$1250	\$1000
140.01 to 150.00	13.25		
150.01 to 160.00	14.25		
160.01 to 170.00	15.00	\$1500	\$1100
170.01 to 180.00	16.00		
180.01 to 190.00	16.70	\$1800	\$1200
190.01 to 200.00	17.70		

Write for Terms on Purchases Over \$200.00

# INSTRUCTIVE BOOKS ON PHOTOGRAPHY



## Noted Experts Help You to Make Better Pictures

Note: All books listed below are shipped Postpaid.

AS LOW AS **45¢** Each

- How to Make Good Pictures** (Eastman). Fine for beginners. Covers picture taking, developing, printing, enlarging.  
**3 T 6805**—256 pages, 420 illus. . . . . **45¢**
- How to Make Good Movies** (Eastman). Covers every phase of movie making, indoors and out. Data on color movies.  
**3 T 6227**—230 pages, 600 illus. . . . . **\$1.80**
- Make Your Own Movies**. A big authoritative book covering every branch of movie making.  
**3 T 8309**—228 pages. Profusely Illustrated. . . . . **\$3.15**
- Photography** (Dr. Kenneth Mees). An authoritative book by the noted head of Eastman Kodak Research Laboratories.  
**3 T 8350**—277 pages. Illustrated. . . . . **\$2.70**
- Projection Control** (Wm. Mortensen). Explicit directions for getting the best enlargements possible. Very complete.  
**3 T 8354**—95 pages, 51 illustrations. . . . . **\$1.59**
- Pictorial Lighting** (Wm. Mortensen). Use of Mortensen's simple, inexpensive, two-unit system explained in detail by the originator, a world-famous photographer.  
**3 T 8355**—116 pages 7x10. Illustrated. . . . . **\$1.80**
- The Model** (Wm. Mortensen). A detailed book on posing. A "must" for every serious worker.  
**3 T 8356**—262 pages, 250 illustrations. . . . . **\$2.70**
- Print Finishing** (Wm. Mortensen). Instructions for famous Abrasion-Tone Process—also mounting, retouching, etc.  
**3 T 8353**—128 pages. Illustrated. . . . . **\$2.25**
- Elementary Photography** (Neblette, Brehm, Priest). One of the best and most complete texts available anywhere—highly recommended for amateurs. Outlines a course of study.  
**3 T 6228**—253 pages, 130 illustrations. . . . . **90¢**

- How to Use Filters** (Karl Barleben, F.R.P.S.). One of the most complete books ever written. Tells when, what filter to use.  
**3 T 8357**—76 pages. Illustrated. . . . . **69¢**
- Modern Portraiture** (Jordan). Hollywood methods clearly explained. Max Factor make-up secrets. Illustrated.  
**3 T 8358**—200 pages . . . . . **\$2.70**
- How to Make Enlargements** (Fraprie). How to get the best in print quality. Instructions for building enlargers.  
**3 T 8360**—111 pages. Illustrated. . . . . **45¢**
- Secret of Exposure** (Fraprie). Down-to-earth facts that tell you how to expose films for perfect negative quality.  
**3 T 8352**—93 pages. Illustrated. . . . . **45¢**
- Photo Almanac and Market Guide**. Complete directory of purchasers for your pictures—also articles, formulas, reproductions of outstanding photographs. Very valuable.  
**3 T 8359**—283 pages. Illustrated. . . . . **90¢**
- Mortensen on the Negative** (Wm. Mortensen). Five years in preparation! Explains the relationship between light, exposure and development—how to get perfect negatives!  
**3 T 8308**—283 pages; 175 illustrations. . . . . **\$4.00**
- Champlin on Fine Grain** (Harry Champlin). World famous authority on fine grain developing. An exhaustive treatise.  
**3 T 8331**—160 pages. Illustrated. . . . . **\$1.80**
- Brilliance, Gradation, Sharpness** (Harry Champlin). How to obtain the ultimate in negative quality.  
**3 T 8332**—160 pages. Illustrated. . . . . **\$1.80**
- Picture Making with Paper Negatives** (Nowell Ward). Complete instructions on the paper negative process.  
**3 T 8333**—85 pages. Illustrated. . . . . **\$1.13**



## "The Little Technical Library" . . . A Complete Course in Photography

2276 pages of the latest facts in the entire field of amateur photography! Each book is authored by an outstanding photographic expert and beautifully illustrated. **All postpaid.**

**50¢** Each

- 3 T 8320—Your Camera and How it Works** (Dobbs and Savage). Selection, use, problems, focusing, shutters, lens, etc.
- 3 T 8321—Developing, Printing and Enlarging** (Bernsohn). Elementary and advanced developing, types of printing, etc.
- 3 T 8322—Filters and Their Uses** (Bradford Shank). Light, film sensitivity, types of filters, color separation, etc.
- 3 T 8323—Composition for the Amateur** (Kenneth Heilbron). Joining subject and picture, masses and accents, tones, etc.
- 3 T 8324—Movie Making for the Beginner** (McKay, F.R.P.S.) Using the camera, projection, production, titling, etc.
- 3 T 8325—Color in Photography** (Ivan Dmitri). Separation negatives, density scales, wash-off relief printing, etc.
- 3 T 8326—Child Photography** (Harold Lambert). Cameras and equipment, taking the shot, posing, do's and don't's, etc.
- 3 T 8327—Home Portraiture and Make-Up** (Seymour and Symons). Tools, lighting, posing, restyling contour, make-up, etc.
- 3 T 8328—Tricks for Camera Owners**. An outstanding collection of the latest hints on every phase of amateur photography.
- 3 T 8329—A Glossary for Photography**. Defines over 3,000 words having photographic significance.
- 3 T 8310—Outdoor Photography**. (Samuel Grierson). Landscape, seascape, pictorial, etc. A comprehensive coverage.
- 3 T 8311—Indoor Photography** (Hillary Bailey, F.R.P.S.). Posing, lighting for portraiture, table top, still-life, etc.
- 3 T 8312—Flash Photography** (Rus Arnold). Equipment, synchronization, exposure, indoor and outdoor work, etc.
- 3 T 8313—Photographing Action** (Victor de Palma). Shutter speed for motion, indoors and outdoors, etc.
- 3 T 8314—Manual of Enlarging** (Stephen White, A.R.P.S.). Projection printing, printing technique, paper selection, etc.
- 3 T 8315—Miniature Camera Technique** (Fenwick Small). Special technique in shooting, fine grain developing, printing, etc.
- 3 T 8316—Photographic Lenses and Shutters** (St. Clair, A.R.P.S.). Photographic optics, camera lenses, auxiliary lenses, etc.
- 3 T 8317—Photo Tricks and Effects** (Deschin, A.R.P.S.). Montage, double exposure, solarization, and other odd effects.
- 3 T 8318—Selling Your Pictures** (Kurt Safranski). Markets, saleable material, legal aspects and numerous hints.
- 3 T 8319—Darkroom Handbook and Formulary** (Germain, A.R.P.S.). Formulas for developers, fixing baths, toners, etc.

State catalog numbers and titles wanted. Postpaid. EACH . . . 50¢ • 10

OF ANY OF THE ABOVE \$4.50

# THE CAMERA BUY FOR 1941!



CLOSED VIEW



FOR PORTRAITS



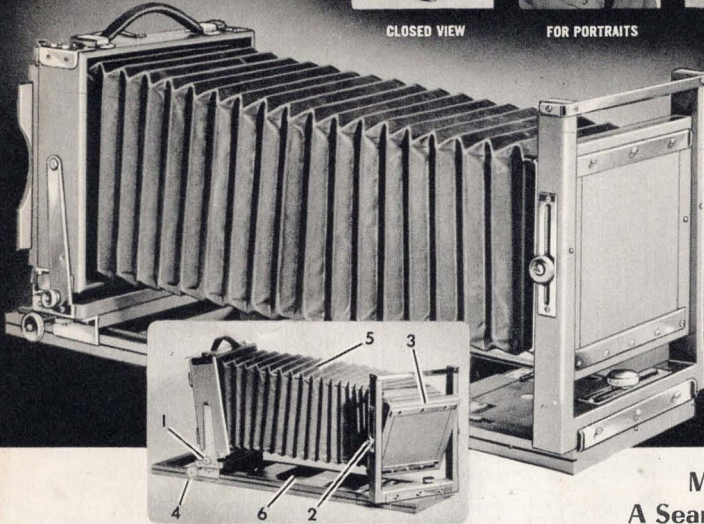
LANDSCAPES



ARCHITECTURAL



COPYING



SAVE \$7.55 TO \$10.55

**\$1895**  
CASH

\$2.50 DOWN . CAMERA ONLY

~~\$29.50~~ QUALITY ELSEWHERE  
STANDARD MODEL

**\$2895**  
CASH

\$3.00 DOWN . CAMERA ONLY

~~\$36.50~~ QUALITY ELSEWHERE  
DE LUXE MODEL

## MARVEL VIEW CAMERA

A Sears Exclusive—at Big Savings!

- Save \$7.55 to \$10.55 on a Genuine Professional Camera!
- Precision-Machined Metal Fittings for all Adjustable Parts.
- Long 13-inch or Extra Long 24-inch Bellows of Genuine du Pont Fabrikoid, Black on Standard, Red on Deluxe.
- Reversible back takes Upright or Horizontal Pictures.
- For Portrait, Landscape, Commercial, Close-up and Copy Photography. All standard view camera adjustments.
- More than Adequate for All Amateur Photographers' Needs!

It's our Grand Finale—the crowning achievement in a book crammed with price-smashing, history-making values! Decidedly the Camera Buy of 1941—a value without an equal! You'll say so too when you consider its quality—and all it is capable of doing! For portrait, scenic, architectural, commercial, copying, and many other kinds of photography!

Has all adjustments professional work demands, including (see small illustration above, left)—(1) swinging and tilting back for correcting distortion, reducing perspective; (2) rising, falling, swinging front, for centering image; (3) up-or-down tilting lensboard for angle shots, correcting perspective; (4) rack and pinion focusing; (5) long-wearing, duPont bellows; (6) rugged, folding frame, geared metal track.

Built of selected kiln dried hardwood, with precisely machined metal fittings. Handsome opalescent gray finish. Lenses not included. (See below.) Made in U. S. A. See Page 30 for Easy Terms.

**Standard Models**—With 13-inch bellows. Take pictures up to actual image size. Nickel-plated hardware, black bellows. Shpg. wt., 10 lbs.

◆ 3 T 8251—For 4x5-in. pictures. Cash..... **\$18.95**

◆ 3 T 8254—For 5x7-in. pictures. Cash..... **\$18.95**

**DeLuxe Models**—For the most critical users. With 24-inch bellows; take pictures up to 1½ times actual image size. 3-section hinged, folding bed. Satin chrome hardware, red bellows. Shpg. wt., each, 12 lbs.

◆ 3 T 8270—For 4x5-in. pictures. Cash..... **\$28.95**

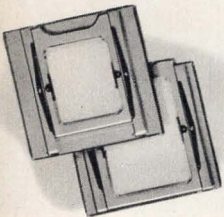
◆ 3 T 8268—For 5x7-in. pictures. Cash..... **\$28.95**

### Extra Dividing Backs

Replaces 4x5 or 5x7-in. camera backs. Removable divider enables you to take 24 pictures per box of 12 4x5-in. or 5x7-in. films. 2¼x3¼-in. back also makes possible use of smaller, lower-cost films. **State size of camera and choice of 2¼x3¼-in., 4x5-in., or 5x7-in. backs.**

◆ 3 T 8257—Shpg. wt., 3 lbs. . **\$4.95**

**Extra Lensboards for MARVEL**  
◆ 3 T 8258—Shpg. wt., 6 oz. .... **49c**



### 6½-inch Lens

f:6.3 Wollensak Velostigmat, Tessar formula. Color corrected. Covers 4x5-in. film. In Wollensak Betax shutter, ½ to 1/100 sec., T. and B. Cable release.

**\$29.95**

◆ 3 T 8259—Wt., 1 lb. **\$29.95**

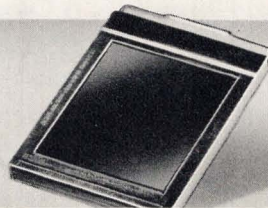


### 7¼-inch Lens

f:6.3 Wollensak Velostigmat, Tessar formula. Color corrected. Covers 4x5 or 5x7-in. film. Wollensak Betax shutter, ½ to 1/100 sec., T., B. Cable release.

**\$37.95**

◆ 3 T 8260—Wt., 1 lb. **\$37.95**

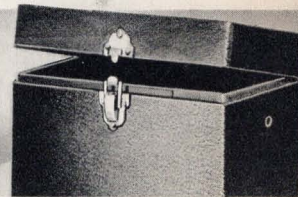


### Cut Film Holder

Holds 2 cut films for use in MARVEL or other standard cameras. Holder slides into camera in front of focusing panel. Shpg. wt., each, 8 oz.

**\$2.29**

◆ 3 T 8256—4x5-in. .... **\$2.29**  
◆ 3 T 8255—5x7-in. .... **2.49**



### Camera Cases

For MARVEL and other view cameras up to 5x7-in. size. Lined, covered with artificial leather. Also holds 2 double film holders. Size, 7½x10½x12½ inches. Shipping weight, 5 lbs.

**\$2.98**

◆ 3 T 8246 ..... **\$2.98**

Items marked ◆ shipped from Chicago, Philadelphia or Los Angeles. See Page 30 for details.