

MINOLTA SR-T 101



An extraordinarily
responsive SLR system camera
with through-the-lens,
full-aperture measuring

MINOLTA'S CLC THE THROUGH-THE-LENS MEASURING METHOD SENSITIVE EVEN TO VARIED OR UNEVEN LIGHT

The primary advantage—and it is considerable—of a TTL exposure measuring system is that only the light which passes *through* the lens is actually measured. This naturally applies to whatever lens you use—macro, wideangle, standard, or telephoto. But the similarity between the SR-T101 and other SLR cameras ends here.

Minolta's sophisticated CLC (Contrast Light Compensator) metering method combines many of the benefits of both averaging and spot measuring systems while avoiding the disadvantages of each.

Briefly, here is how it works:

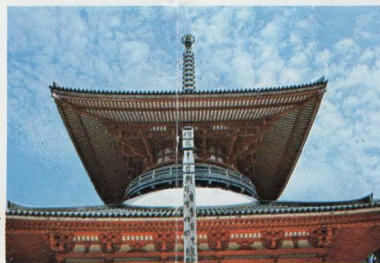
The field of view is divided into two overlapping sections, each of which is "read" separately by two CdS cells located at the top of the pentaprism.

The two cells in turn have an effect upon each other in high contrast situations in a way that is biased in favor of the darker portion of the area measured. This system avoids the marked tendency the strictly averaging meter suffers of being overly affected by the brighter segments of the scene.

The result is that photos which would ordinarily have been under-exposed will be in balance with the SR-T101's Contrast Light Compensator system. And yet CLC operation is simple, unlike the spot measuring technique which requires you to take several readings within the subject area and then to compute your own average. You never have to cope with such complexities when you own a Minolta SR-T101.



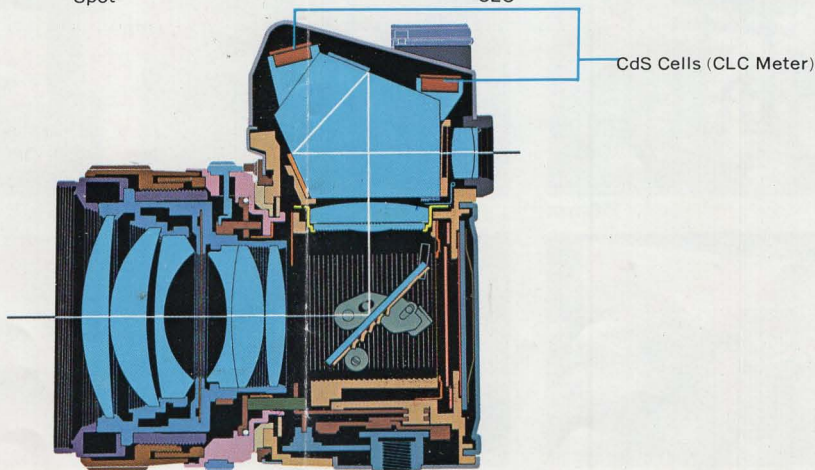
Spot



CLC



Average



THE SR-T101'S CONTROL-CENTER VIEWFINDER YOU'RE IN CONTROL, COMPLETE CONTROL

What you do when your eye is at the viewfinder probably has more to do with your photographic success than any other single thing. The SR-T101's control-center viewfinder is designed to help you compose, accurately focus and adjust exposure in the quickest possible time.

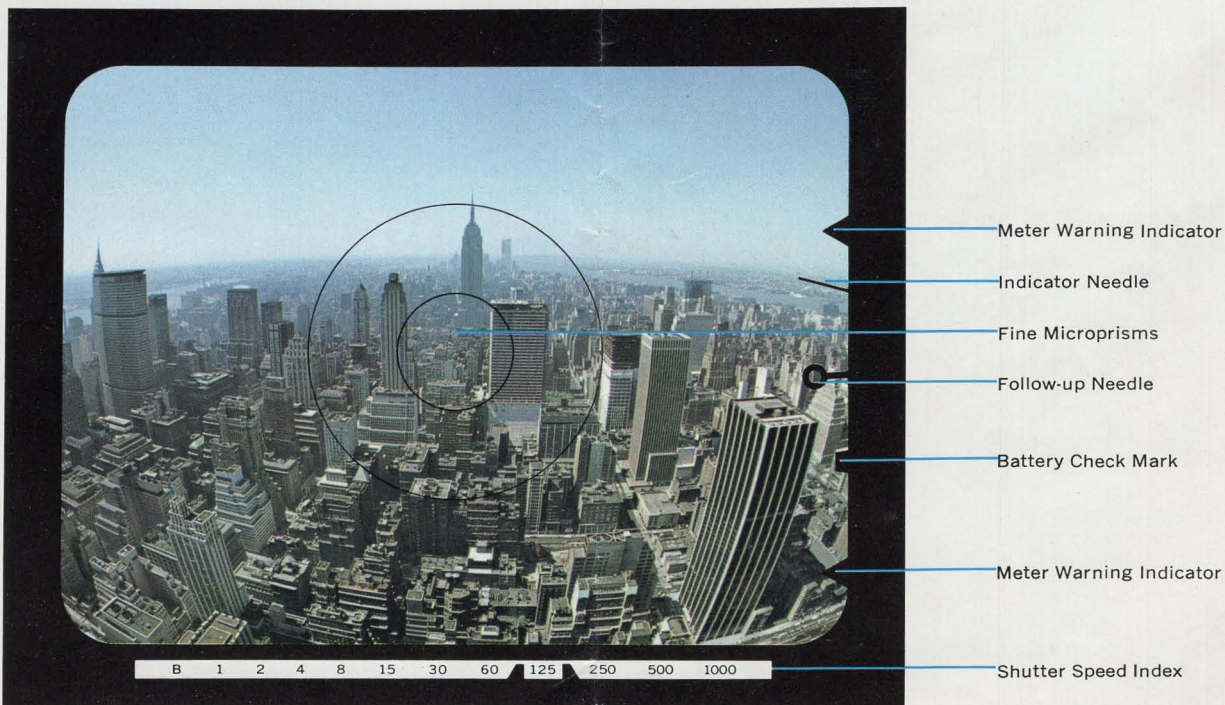
Your field of vision, for example, is never clouded even if the lens is set at the smallest opening. This is because all of the most popular MC (meter coupled) Rokkor Lenses feature automatic diaphragm operation—they always remain at maximum aperture. Consequently, the finder stays bright from corner to corner—composition and focus are by far more efficient than with cameras employing the “stop down” system.

The center circle of the finder contains a section of microprisms, another valuable aid for deter-

mining proper focus. These microprisms snap into sharp clarity at the point of exact focus.

You'll also appreciate the speed with which you can determine exposure. The shutter speeds are clearly visible at the bottom of the finder so you can see at a glance which has been selected. In addition to a battery check mark, the exposure indicator needle is located at the right of the viewfinder. Both aperture ring and shutter speed dial are coupled to the CLC meter, so you'll get a reaction from the follow-up needle whenever either is adjusted.

It is because of the SR-T101's follow-up needle alignment method of setting shutter speed and F stop that you have a *feel* for exposure—an operating comfortableness that has won admiration from photography enthusiasts everywhere.



SPECIAL SR-T 101 FEATURES

Rapid Change Lens Mount

All Rokkor Lenses are bayonet mounted. This is a fast, foolproof way to change lenses and at the same time, this action automatically couples MC Rokkor Lenses to the SR-T101's exposure meter. Just a 54° movement and the lens is quickly fitted to the camera. At all times, the mount is rigid and smooth, without the slightest trace of looseness or slack—an important consideration since rigidity is essential to holding good picture definition.



Oversized Mirror

The largest mirror found in any SLR camera is found in the SR-T101. This means you always have full view of your subject, regardless of lens used, including long distance telephoto and high-ratio close-up.

An independent mirror lock up switch is also provided.

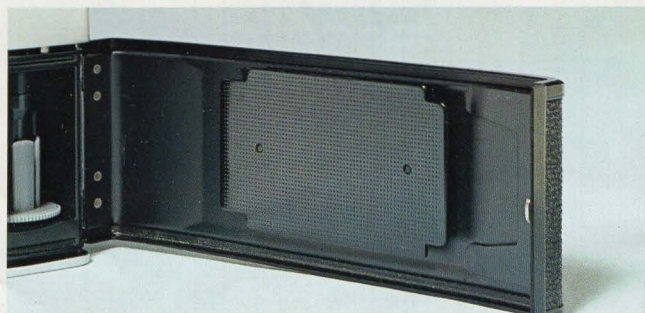
Three Standard Rokkor Lenses Available

Minolta has three standard lenses to choose from, all of which are extremely fast. While the most demanding enthusiast will opt for the exceptional 58mm F1.2, our most popular standard lens is still the 50mm F1.4. And the cost conscious buyer will probably choose the 50mm F1.7. Regardless of the basic lens selected, all are made with the same fastidious devotion to craftsmanship and all feature Minolta's exclusive Achromatic Coating.



Oversized Film Pressure Plate

Of critical importance, but often overlooked is the film pressure plate. In the SR-T101 it is larger than what you would usually expect to find. This is to assure that the film remains flat and firmly in place during exposure no matter how fast or slow the shutter speed is set.

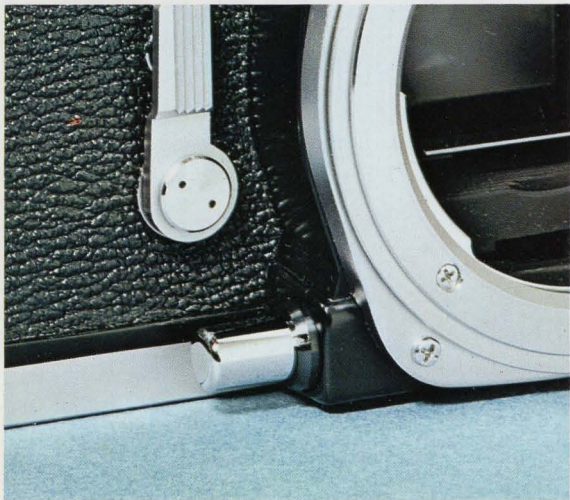


Wide Film Speed Range

The Minolta SR-T101 accepts every type of 35mm film that is now commercially available. The speed range selection extends from ASA 6 to 6400, a choice flexible enough for every sort of photography imaginable.

Depth of Field Preview Button

By pushing the depth of field preview button you can manually "stop down" the lens to a pre-selected aperture in order to determine what effect the focus and F stop will have on your final results. This is an especially valuable feature for use with long telephoto lenses which have a fairly shallow depth of field.



Safeguards Against Stray Light

The SR-T101's light shield plate, a Minolta exclusive, is located just behind the lens on the camera body. Harmful, extraneous light which could enter the lens and affect exposure correctness is blocked by the shield plate from ever reaching the film. Another important feature is the Pentaprism Shading Mask. Incident light is prevented from entering through the eye piece by a reflection absorbing film and shading mask.

SPECIFICATIONS

—35mm single-lens-reflex camera with through-the-lens exposure meter—

STANDARD ROKKOR LENS 50mm F1.4 (or 50mm F1.7 or 58mm F1.2)

SHUTTER Focal plane shutter with speeds from 1 to 1/1000 sec. plus B Flash synchronization: FP (all speeds) and X (up to 1/60 sec.) Self-timer time adjustable, 10 sec. maximum delay

EXPOSURE METER Through-the-lens full-aperture measuring system with CLC (Contrast Light Compensator) 2 CdS cells on the pentaprism Working range: EV3 to EV17 with ASA 100 film

Battery: 1.35v mercury battery

VIEWFINDER Bright, erect image through fixed eye-level pentaprism Focusing screen with fresnel lens and central microprism spot Exposure control needles and shutter speed indication, battery check mark, exposure warning zones all visible in finder

FILM ADVANCE Lever-type, quick-advance winding with shutter cocking and double-exposure prevention Single- or multiple-stroke with 150° winding angle and 20° unengaged play Automatic resetting frame counter Rapid film rewind with crank

FILM SPEED RANGE ASA 6 to 6400, DIN 9 to 39 Accepts standard 35mm film (12, 20, or 36 exposures)

OTHERS Bayonet-type lens mount Over-size quick-return mirror with lock-up device

Depth-of-field preview button for MC Rokkor Lenses (stop-down measuring button for other than MC Rokkor Lenses)

Battery ON-OFF and B.C. switch ASA-DIN conversion table Accessory shoe

SIZE AND WEIGHT (body only)

Width 145mm (5¾ in.); Depth 48mm (1⅞ in.); Height 94mm (3¾ in.), Weight: 705g (24.8 oz.)

THE MINOLTA SYSTEM CAMERA. LENSES. PLUS THE RESPONSIVENESS OF MORE THAN 100 INDIVIDUAL ACCESSORIES

When you own a Minolta SR-T101, you possess more than a camera. You own the beginning of one of the world's few complete photographic systems—the Minolta System of Creative Photography.

At the nucleus of the system is the SR-T101, a camera which makes even the most involved procedures a pleasure. And more than 150 accessories and Rokkor Lenses may be used with it to achieve a phenomenal range of photographic effects, including microscopic and close-up which reveal intriguing new perspectives of the commonplace subject through magnification. For this

type of photography Minolta offers a wide selection of attachments: extension tubes, filter mount type close-up lenses, a special MC Macro Rokkor Lens, a choice of bellows, the 100mm Auto Bellows Rokkor Lens, plus viewing and focusing aids. In fact, the extent of the Minolta System is virtually as great as your own imagination.

You may never have the opportunity to use the entire Minolta System, nonetheless, it is reassuring to know that the SR-T101 has all the flexible adaptability you could ever need.



THE ROKKOR LENS COLLECTION RESPONSIVE TO VIRTUALLY EVERY INTERPRETATION

Of the many attractive features of the SR-T101, the considerable variety of interchangeable Rokkor Lenses that it accepts is the most basic. Your choice of perspective is almost unlimited, as these photos will attest. The Rokkor range extends from a 16mm ultra-wideangle—a lens which gives you a panoramic “fisheye” view without vignetting—to the super telephoto with a focal length of 1000mm.

In addition to offering you tremendous flexibility, the Rokkor name also signifies a standard of impeccable optics. In Japan, it is almost unheard of for a camera maker also to be a lens maker. Minolta is a rare exception. Not only do we fashion our own lenses, but the optical glass that goes into them as well. As a consequence, Rokkor Lenses

are uncommonly uniform in performance throughout each lens's entire aperture range.

But even the finest lenses stand at a disadvantage without special coatings to ensure true transmission of image tone and color and suppress reflection of light rays. For this purpose, Minolta has developed its own exclusive lens treatment called Achromatic Coating. This coating renders colors faithfully, considerably checks flare and allows more of the entire light spectrum to pass through when compared to other lenses.

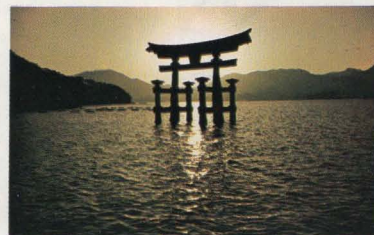
You can immediately identify the Achromatic Coating as all Rokkor Lenses have a conspicuous *green cast*. This is your guarantee of finer results both in color and in black & white.



16mm



21mm



35mm



58mm



100mm



200mm



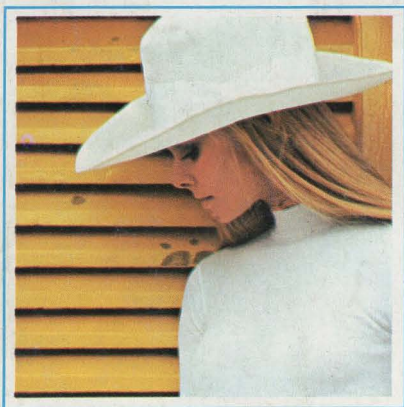
300mm



800mm



1000mm



MINOLTA MASTERS PHOTOGRAPHY

Minolta
MINOLTA CAMERA CO., LTD.