

SEP 20 1906

THE AUTO GRAFLEX



THE AUTO GRAFLEX CAMERA

1906

FOLMER & SCHWING COMPANY

ROCHESTER, N. Y.—U. S. A.



A. R. FRANK

THE AUTO GRAFLEX Camera is not an experiment, as all the mechanical and optical principles embodied in its construction have stood the test of practical use under the most trying conditions.

The original Graflex was patented November 5th, 1901, and met with instant favor with all classes of photographers, and the Auto Graflex is the natural evolution of the correct fundamental principles embodied in the first model and brought to its present completeness by the skill of our corps of specially trained workmen.

The manifold advantages of the Auto Graflex over all other cameras are evident at a glance and this coupled with the highest type of construction makes it the ideal camera for the photographer.

The Auto Graflex while designed with especial reference to the photographing of rapidly moving objects is also equally well adapted for all other classes of work as it eliminates entirely the estimating of distance and insures absolutely correct focus and the proper recording of the image in size desired upon the sensitive plate.




LOU DILLON.

Made with
The Graflex Camera

Copyright by
O. V. GREENE

The AUTO GRAFLEX CAMERA

HE AUTO GRAFLEX is a light and compact camera of special construction, allowing the user to see the image on the ground-glass screen *full size and right side up at the instant of exposure.* This is accomplished by means of an optical mirror placed within the camera at an angle of 45 degrees, reflecting the image from the lens upon a ground glass placed at the top of the camera as shown in Figure 1.

In the Auto Graflex the reflecting mirror is supplemented by an additional mirror placed in the top of the focusing hood, (see Figure 2,) enabling the user to hold the camera on a level with the eyes or at a lower elevation at pleasure. This additional mirror also allows the user to reverse the camera for making vertical pictures as is fully illustrated with the diagrams and cuts shown herewith.

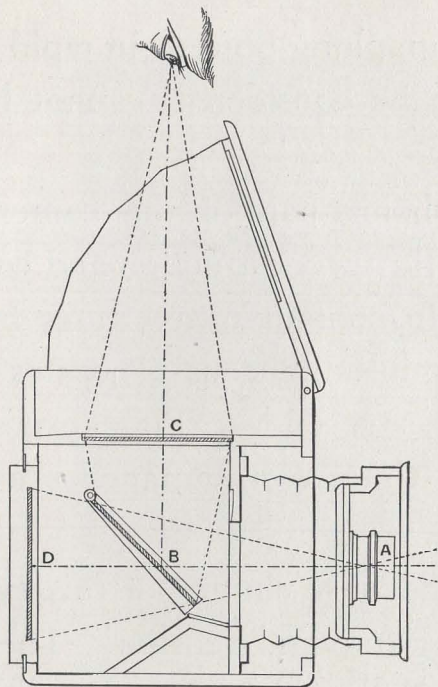


Figure 1.

- | | |
|----------------------|----------------------------|
| A. Lens | C. Top Ground Glass |
| B. Reflecting Mirror | D. Sensitive Plate or Film |
| E. Reflecting Mirror | |

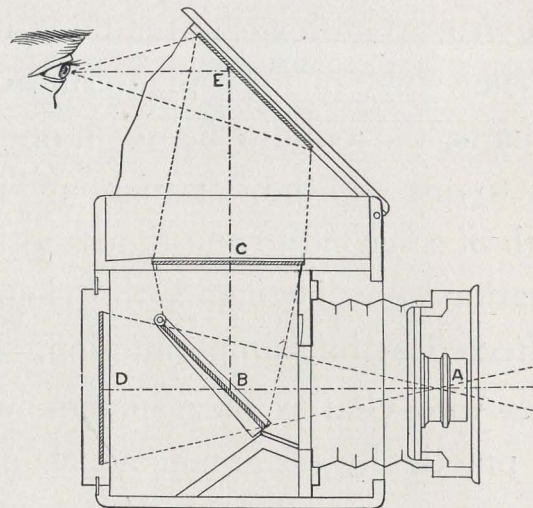
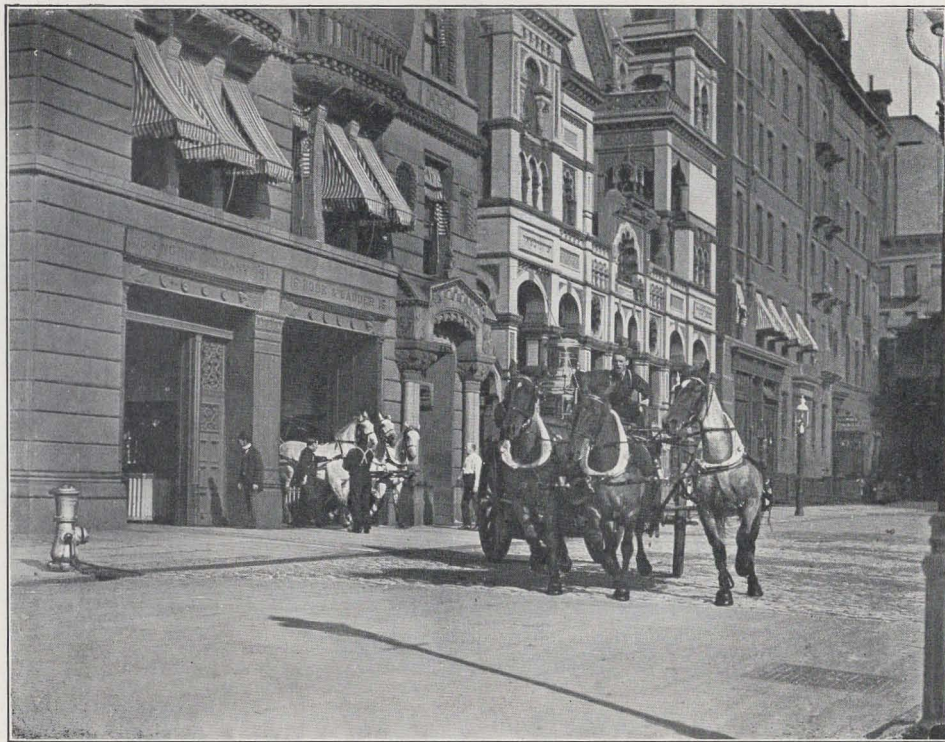


Figure 2.

The advantage of these features for photographing objects in rapid motion or for pictorial work, where composition is to be considered, cannot be over-estimated.

The Auto Graflex shutter built into and being part of the camera is an entirely new type of focal plane shutter, scientific in construction and composed of few parts, the curtain being in one long strip containing apertures from full opening to one-eighth of an inch, and permitting instantaneous exposures of from one-tenth of a second to one-thousandth part of a second. Time exposures of any duration may be made, the change from time to instantaneous exposures being effected by one simple motion.

The Auto Graflex focal plane shutter is the only shutter of this type permitting practically instantaneous changes of aperture and tension. The shutter is set for any exposure by one-half turn of the winding key and all adjustments are made from the outside of the camera. Any change as to speed may be made even when the plate or film is in position and the slide withdrawn.



RESPONDING TO
AN ALARM.

Made with
The Graflex Camera

FRED H. SMYTH

Numbered dials placed at the most convenient point indicate both tension and aperture.

The box is made of selected wood, thoroughly seasoned and kiln dried, treated by a process insuring against climatic changes. It is handsomely ebonized, the outside of the camera, being covered with the finest grade of leather, hand tooled.

All metal parts are substantially constructed from sawed and milled brass, oxidized in gun metal finish.

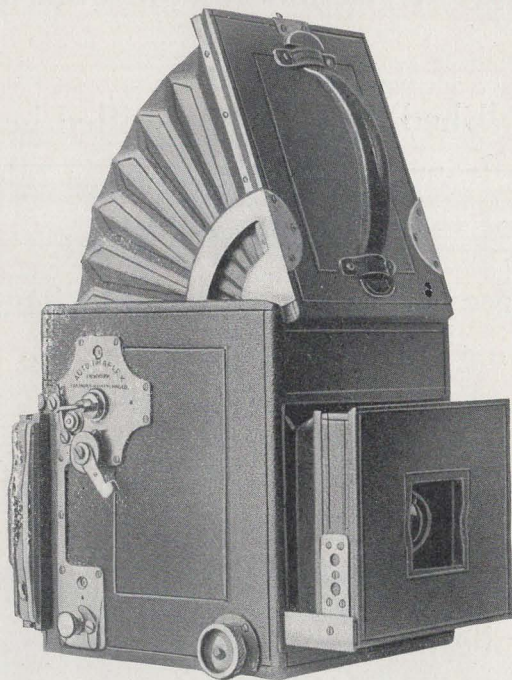
Tripod plates are provided for use when necessary. The front racks out on two heavy brass side arms working in deep grooves fitted with strong angle metal guides. Perfect freedom of extension is thus obtained, without the possibility of side play or lost motion.

The front of the camera is recessed to receive the lens. This front being hinged, may be opened when necessary to alter the lens diaphragm, remove

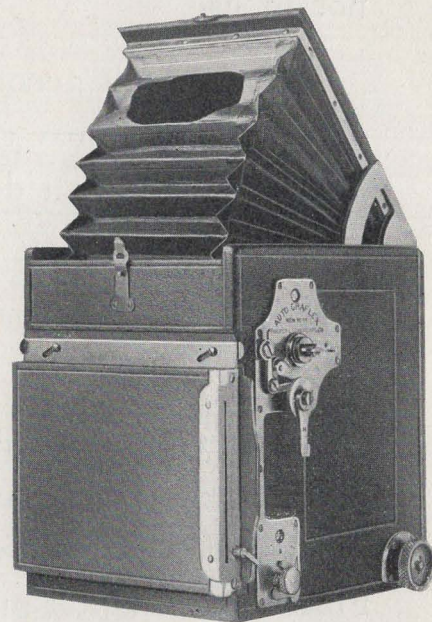
The AUTO GRAFLEX CAMERA



AUTO GRAFLEX WITH HOOD HALF
open as used when held on a level with the eyes
and viewing image on mirror placed in angle
of hood



AUTO GRAFLEX
FULLY OPENED FOR USE



BACK OF AUTO GRAFLEX
illustrating method of attaching film pack
adapter or plate holder

the lens or clean the mirror. A door in the front fully protects the lens when not in use.

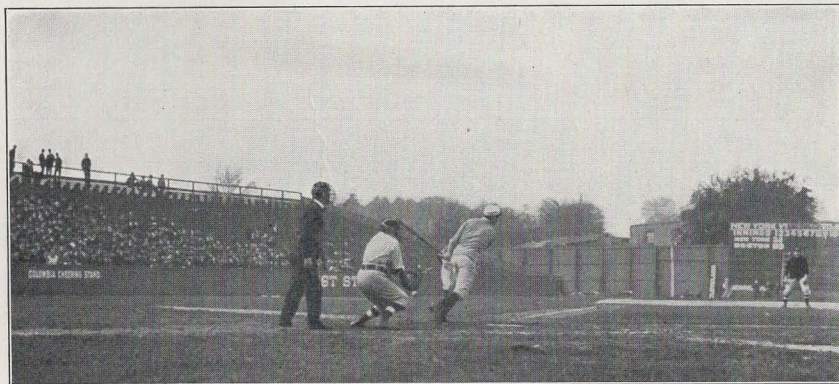
Focusing is accomplished by turning a milled head button at the right side of the camera near the front, and the shutter is released by pressing a button on the lower left side of the camera.

All working parts are so arranged that the hands fall naturally into their proper positions, enabling the user to make the exposure without loss of time.

The Graflex double plate holder, handsomely ebonized and equipped with our improved sectional cut off, is furnished with the camera. The Graflex Magazine Plate Holder carrying twelve plates, the Cartridge Roll Holder and the Film Pack Adapter may be instantly attached to the camera in the same manner as the regular plate holder. The method employed in attaching plate holder and film devices to the camera is simple and secure and entirely eliminates

the possibility of either plate holder or film attachment becoming displaced through accident.

The Auto Graflex camera is the best that skilled labor and highest grade materials can produce, and we take pleasure in presenting it to the discriminating photographer, who, we are certain, will recognize and appreciate the many exclusive and valuable features embodied in its manufacture.



A remarkable Graflex snapshot made during a ball game between the New York and Boston American League Teams. The batter has just struck at the ball, missed it, and swung his bat so far back that it struck the catcher on the head, knocking him senseless. The ball will be noticed just under the catcher's glove

A MASS
FORMATION.

Made with
The Graflex Camera

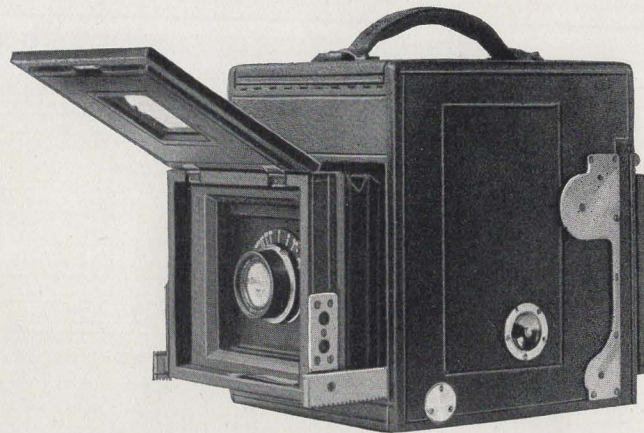
Copyright by
R. W. TEBBS



The AUTO GRAFLEX CAMERA

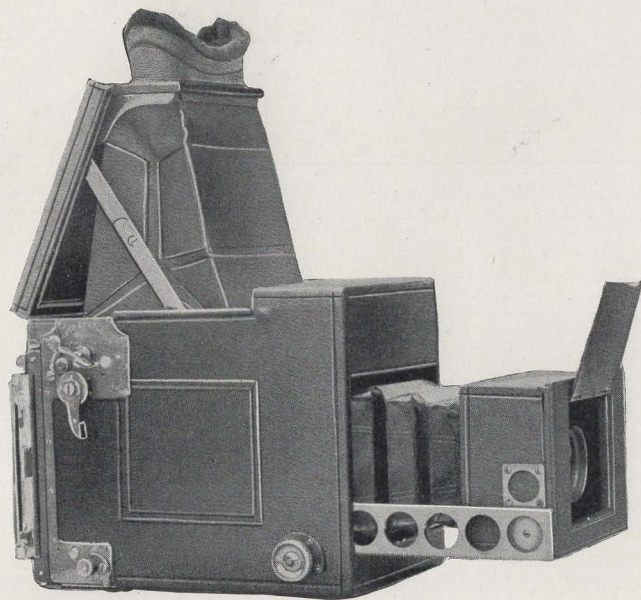


AUTO GRAFLEX CLOSED



AUTO GRAFLEX WITH FRONT OPEN

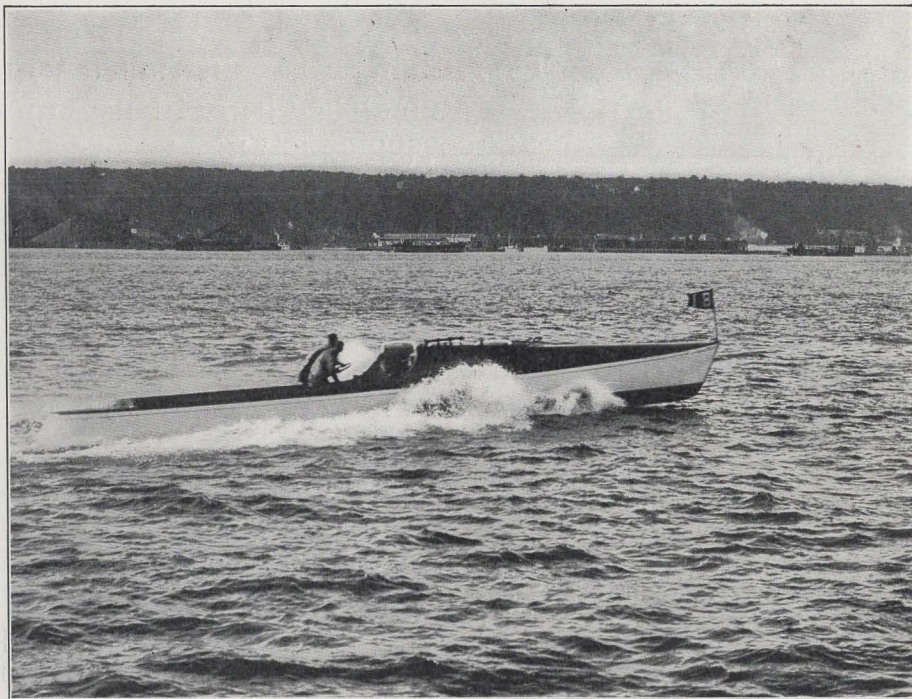
The Reversible Back Auto Graflex Camera



Reversible Back Auto Graflex open for use.

The Reversible Back Auto Graflex, as its name indicates, is made so that upright, as well as horizontal pictures can be taken without turning the Camera over on its side.

This type of Camera is not quite so compact as the regular Auto Graflex but the differences in size permits the adjustment of somewhat longer focus lenses, which for special work is often desirable.

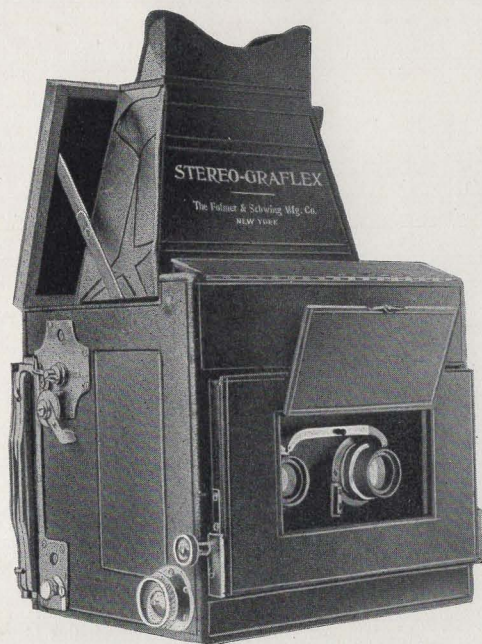


A TRIAL SPIN.

Made with
The Graflex Camera

Dr. H. H. RUSSELL

The STEREO AUTO GRAFLEX CAMERA

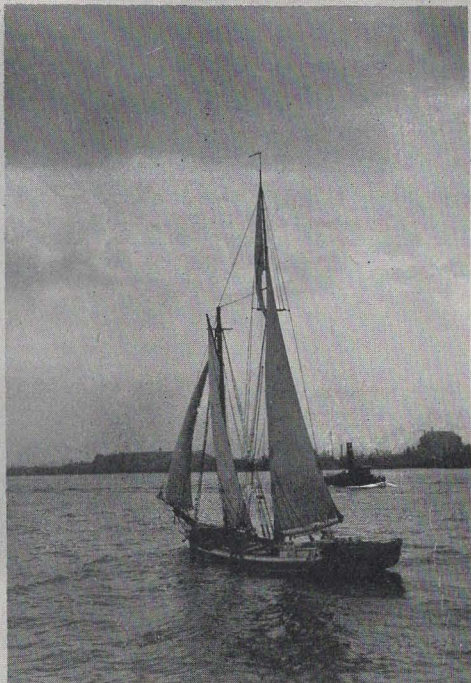


THE STEREO AUTO GRAFLEX
OPEN FOR USE

This Camera is constructed with a wide front to carry a matched pair of lenses for the production of Stereoscopic pictures.

It differs entirely from any other form of Stereo Camera, not only in its unique design and perfect adjustment, but in the method of focusing. The hood at the top is practically a stereoscope, as it contains a pair of stereo prisms, through which the two images, reflected by the lenses, are seen coincidentally upon the focusing screen, *right side up*—not inverted.

The beauty of Stereoscopic pictures and the fascination of producing them with a thoroughly modern equipment, is being more and more appreciated by an increasing number of Photographers, which accounts for the growing popularity of the finest outfit ever made for Stereo Work—the Stereo Auto Graflex.



Made with a
Stereo
Auto Graflex
Camera

S P E C I F I C A T I O N S

Dimensions - -	3¼ x 4¼ 6½ x 5¾ x 6¾	4 x 5 7⅛ x 6⅛ x 7¾	5 x 7 9¾ x 8¼ x 8¾	4 x 5 Reversible Back 8⅞ x 6⅛ x 7½	5 x 7 Stereo Graflex 7½ x 9 x 8¾
Focal Capacity - -	7 inches	8½ inches	12½ inches	11½ inches	8 inches
Size of Lens Board -	2½ x 2½ inches	3 x 3 inches	4 x 4 inches	3½ x 3½	3¼ x 5¾
Weight - - -	3¼ Pounds	4¾ Pounds	7¼ Pounds	5½ Pounds	7 Pounds

P R I C E S

	3¼ x 4¼	4 x 5	5 x 7	4 x 5 Reversible Back	5 x 7 Stereo Graflex
Auto Graflex without Lens	\$ 75.00	\$ 85.00	\$100.00	\$125.00	\$200.00
Auto Graflex fitted with No. 4 B. & L. Zeiss Unar F. 4.5	No. 4 113.50	No. 5 127.00	No. 6 163.00	No. 6 188.00	
Auto Graflex fitted with No. 4 B. & L. Zeiss Tessar F. 6.3	No. 4 108.50	No. 5 125.00	No. 6 159.50	No. 6 184.50	
Auto Graflex fitted with* B. & L. Plastigmat F. 6.8 -	No. 1 109.00	No. 2 125.00	No. 4 155.00	No. 4 180.00	
Auto Graflex fitted with - Cooke Lens III F. 6.5 -	No. 4 110.55	No. 4 120.55	No. 6 147.70	No. 6 172.70	

PRICE LIST—Continued

	3¼ x 4¼	4 x 5	5 x 7	4 x 5 Reversible Back	5 x 7 Stereo Graflex
Auto Graflex fitted with Goerz III F. 6.8 -	No. I \$115.50	No. I \$125.50	No. 3 \$156.25	No. 3 181.25	
Auto Graflex fitted with Goerz 1 B F. 4.8 -	No. I 117.30	No. I 127.30	No. 3 160.30	No. 3 185.30	
Auto Graflex fitted with B. & L. Zeiss VIIA F. 6.3	No. 4 133.00	No. 7 153.00	No. 10 182.00	No. 10 207.00	
Auto Graflex fitted with Goerz Syntor 1 D -	No. 0 96.15	No. I 109.30	No. 3 140.95	No. 3 165.95	
Stereo Graflex without Lenses - - -					\$200.00
Stereo Graflex, fitted with matched B. & L. Zeiss Tessar Lenses, 11 B. No. 4 F. 6.3 - -					267.00
Stereo Graflex fitted with matched No. 1 Series III Goerz Lenses F. 6.8 - - -					283.50
Graflex Magazine Plate Holder, leather covered	13.00	13.00	15.00	13.00	15.00
Film Pack Adapter, leather covered - -	4.50	5.00	7.50	5.00	7.50
Cartridge Roll Holder, leather covered -	7.50	7.50	10.00	7.50	10.00
Superior Leather Case for 6 Plate Holders, lock and key - - - - -	6.00	6.00	10.00	6.00	10.00
Superior Leather Case for Camera and Film Pack Adapter, lock and key - - -	10.00	11.00	13.00	12.00	13.00
Case for Camera and M. P. H. or C. R. H. -	11.50	12.50	15.00	14.00	15.00
Extra Lens Boards - - - - -	.50	.60	.70	.70	2.00
Extra Graflex Plate Holders - - - - -	2.50	2.50	3.50	2.50	3.50

The AUTO GRAFLEX CAMERA



Showing use of Auto Graflex in ordinary manner



Showing Auto Graflex held on a level with the eyes, viewing image on mirror in top of hood

The AUTO GRAFLEX CAMERA



Showing Auto Graflex held over the head, when photographing in a crowd, or when extreme elevation is desired



Showing Auto Graflex used as a deceptive angle camera

A CENTER-
FIELD CATCH.

Made with
The Graflex Camera

FRED H. SMYTH





PELICAN ISL AND
FLORIDA.

Made with
The Graflex Camera

Copyright by
FRANK M. CHAPMAN

HUMMING BIRD
IN FULL FLIGHT.

Made with
The Graflex Camera

Copyright, 1905
By J. T. DYE



