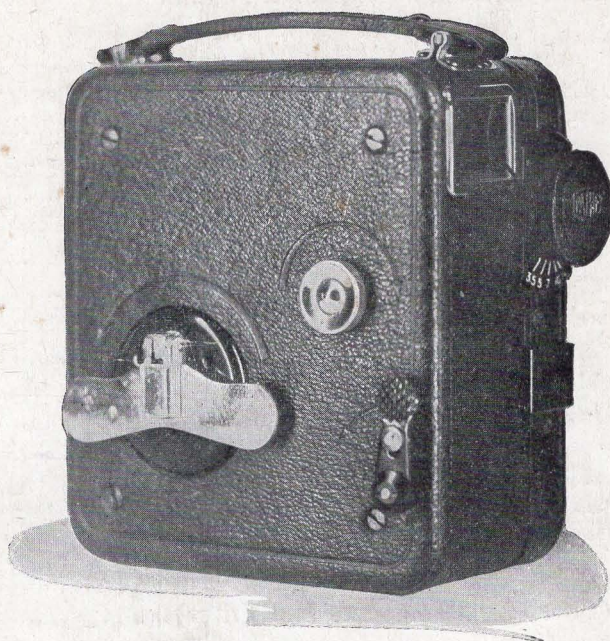


PATHÉ

9½ mm.

Motocamera



HOME MOVIE EQUIPMENT

PATHE
MOTION PICTURE CAMERAS
ACCESSORIES AND EXHIBITION FILM
SOLD BY
WESTWOOD ELECTRIC CO.
1608 OCEAN AVE., SAN FRANCISCO, CAL.
MAIL ORDERS FILLED





INDEX

	Page
Amplifier (Magnifier)	7
Attachment — Super-reel	7
" for 32 volt use	8
" for 220 volt use	8
Automatic Drive	5
Bulbs	7
Box View-Finder	6
Cameras	4
Case — for camera	5
" for Exhibition Film	10
" for Projector	8
Cement — Film	11
Cinophot	6
Cleaner — Film	11
Condenser	7
Container	11
Cord — three way electric	8
Dynamo	8
Film — Exhibition	9
Film — (Magazines)	9
Film Notcher & Slotter	11
Film Reel — empty	10
Filter	5
Humidor	11
Lamps	7
Lens Sets (Portrait Attachments and Filter)	5
Magazines	9
Magnifier (Amplifier)	7
Mirror — Reflecting	8
Motors	7
Oil	11
Panoraming Platform	6
Projectors	6
Rewinders	11
Screens	9
Sun Shield	5
Super-reel Attachment	7
Switch — Two-way	7
Title Stand	6
Tripod	5
View Finder	6



Introduction

PATHE 9½mm equipment and films are known in every land. The Pathé trade mark, the Pathé Rooster, the oldest survivor among the cinema pioneers, is still indicative of the greatest variety and quality in the Motion Picture field.

With such a background, everything that is presented under the Rooster banner must of necessity live up to a set of rigid rules.

Pathé 9½mm equipment is manufactured in France. The exhibition films for 9½mm projectors are made in Pathé laboratories in the United States.

Pathé 9½mm equipment and films are dedicated to the home.

Simplicity, safety, economy, added to the large variety of our collection of films are facts which make the Pathé 9½ mm a most desirable acquisition for every home.

If you do not know the Pathé 9½mm dealer in your vicinity, please communicate with us and we will gladly indicate the logical concern for you to get in touch with.

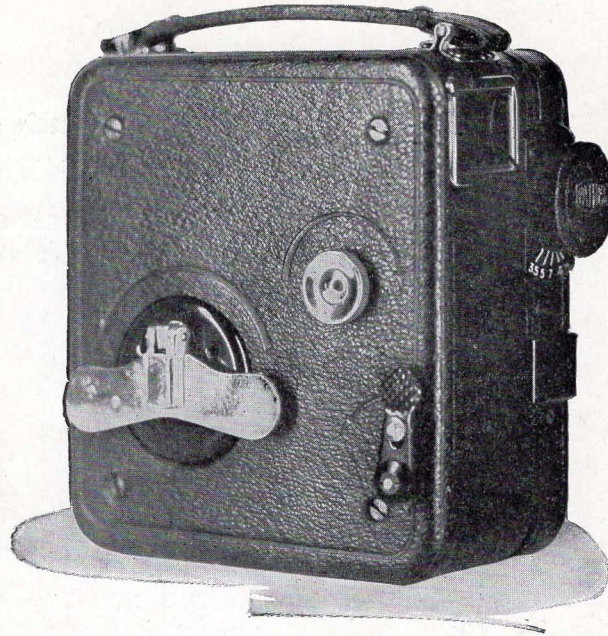
PATHEX, INC.

35 West 45th Street

New York City



PATHE CAMERAS



Motocamera

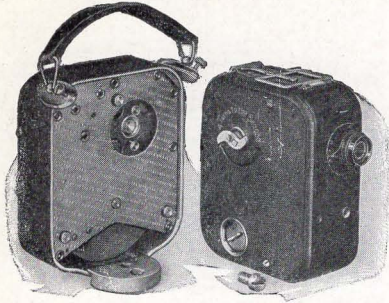
The Motocamera is the latest Pathé Camera. Complete, compact, and extremely easy to use. It weighs little over three pounds and is $4\frac{3}{4}$ inches high and $2\frac{1}{2}$ inches wide. The built-in motor mechanism is of sufficient capacity to completely expose the entire magazine of approximately twenty-six feet in one winding. The double claw mechanism and simplified film gate assure easy passage of the film. In operation the camera is quiet and free from vibration. The view finder is enclosed. The lens is recessed to prevent sun glare. The indicator shows the amount of film exposed. Covered with black leather. Equipped with F3.5 lens. \$45.00.

Motocamera equipped with Zeiss F 2.7 lens for use under less favorable light conditions.

\$85.00

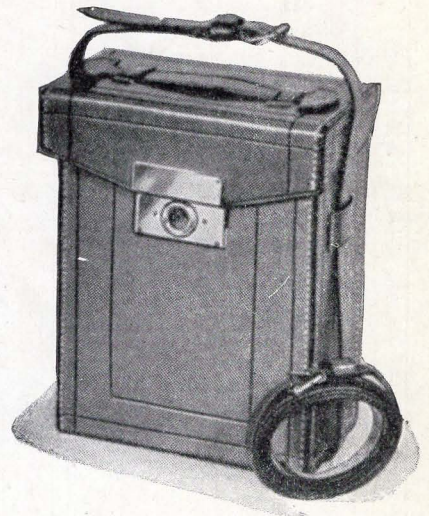


CAMERA ACCESSORIES



AUTOMATIC DRIVE — replaces the crank on the Hand Driven Camera. It provides steady turning at the proper speed, and obviates the use of the tripod. It is easily attached, and detached, and when not in use the camera may be turned by hand. It is covered with black morocco leather to match the hand driven camera. The indicator shows the amount of film exposed. Complete, ready to be attached in a few minutes.....\$18.00

CASE for the Motocamera — of sturdy cowhide with lock and shoulder strap. Additional space for three magazines (aside from one in the camera). Provides a convenient means for the traveler or outdoor user. In Tan or Black.
\$8.50



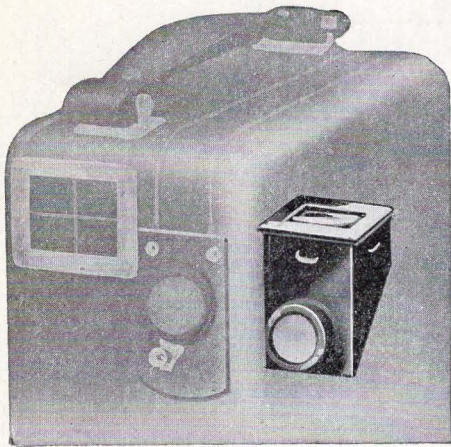
CASE for Hand Driven Camera with Automatic Drive. Of cowhide with shoulder strap. Additional space for four magazines. In Black.....\$6.75

LENS SETS (Portrait Attachments and Filter). Three lenses for close-up work at one-half meter, one meter, or two meters. A filter (4x) is included. Each lens fits over the lens of the Motocamera. In Tan cowhide case.....\$6.00

SUN SHIELD — for the hand driven camera. Fits directly over the camera lens to avoid the direct rays of the sun. Not necessary with the Motocamera.....25c

TRIPOD — essential with the hand driven camera and a convenience with the Auto-Drive camera. Of sturdy steel construction, about forty-eight inches in height when set up. Finished in Black, with canvas case, leather trimmed...\$1.50

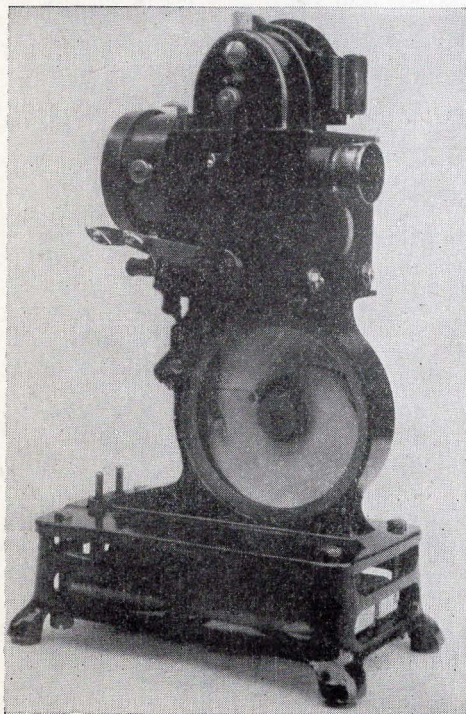
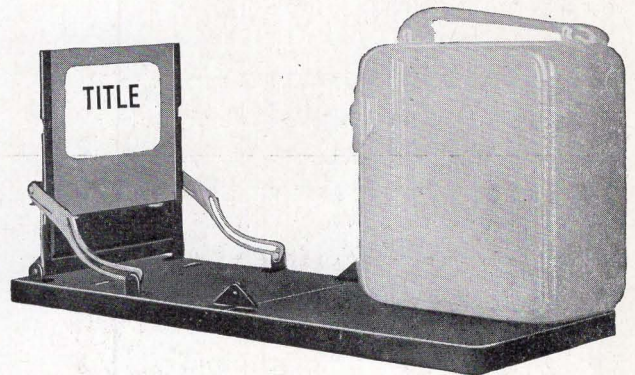




BOX VIEW-FINDER. For use with the Motocamera at waist level. Not for use with the hand driven camera. \$2.50

TITLE-MAKING STAND. A valuable accessory for photographing titles. Uses a card $1\frac{7}{8} \times 2\frac{5}{8}$ inches with corresponding size mask for framing the title at that size. A supplementary lens is included, also means for securing the Motocamera in exact position to frame the title correctly. \$6.00

PANORAMIC and TILTING PLATFORM. Essential for the user of the hand driven camera in following a moving object to secure a steady picture. Mounted on the tripod, the camera may be tilted or panoramed or both, or either movement locked. \$3.50



PATHE PROJECTORS

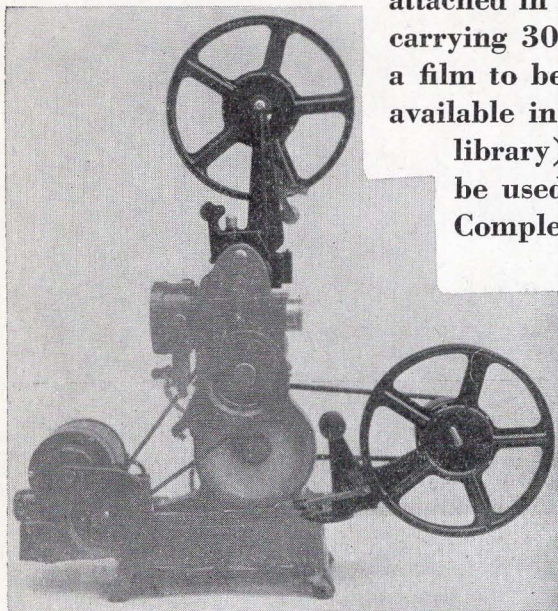
MOTOR DRIVEN PROJECTOR. Embodies in miniature with the greatest simplicity, yet with the maximum of working efficiency, all the principles of professional motion picture projectors. It is neat, compact, handsome in appearance and exceptionally strong. It is constructed to work on 110 volt lighting current, and a supplementary resistance will enable its use on other voltages. The projector takes 30 foot and 60 foot reels of film, and with the Super-Attachment also 300 foot reels. A perfectly clear, brilliant, flickerless picture covering every screen mentioned in this catalog. Complete, including cord, plug, rubber mat, and two lamps. \$54.00

HAND DRIVEN PROJECTOR. Same as the above projector, except not equipped with motor. \$39.00



PROJECTOR ACCESSORIES

SUPER REEL ATTACHMENT. Consists of two arms which are attached in a few minutes to the Projector and accommodate reels carrying 300 feet of film. This increases the running length of a film to between fourteen to twenty minutes. Library films are available in this length, or a number of short reels (amateur or library) may be joined together to make a Super reel. It may be used with the Motor, Dynamo, or hand driven projector. Complete.\$18.00



MOTOR for Hand Driven Projector. An electric motor for automatically driving the hand driven Projector. Readily attached. For use on 110 volts AC or DC.\$15.00

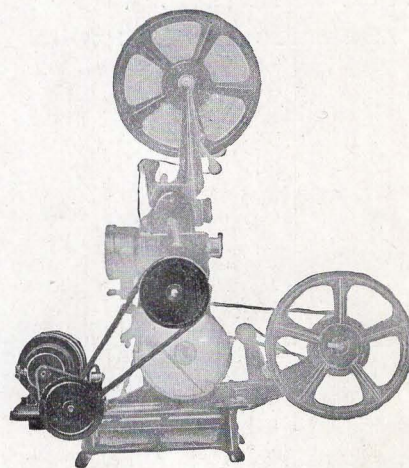
AIR-COOLED MOTOR for hand driven projector. Attached to the rear of the projector.....\$21.00

LAMP — regular. For use with all Pathé projectors using 110 volt house current.\$1.25

LAMP — 6 volt. For use where house current is not available. Also used in connection with the dynamo.....\$1.25

CONDENSER — Anti-Caloric. Greatly increases the life of the film by reducing the heat from the lamp. The condenser may be substituted for the standard condenser in any Pathé projector.\$3.00

MAGNIFIER (Amplifier). For doubling the size of the projected image. Not for use with the new Pathe projector. \$3.00

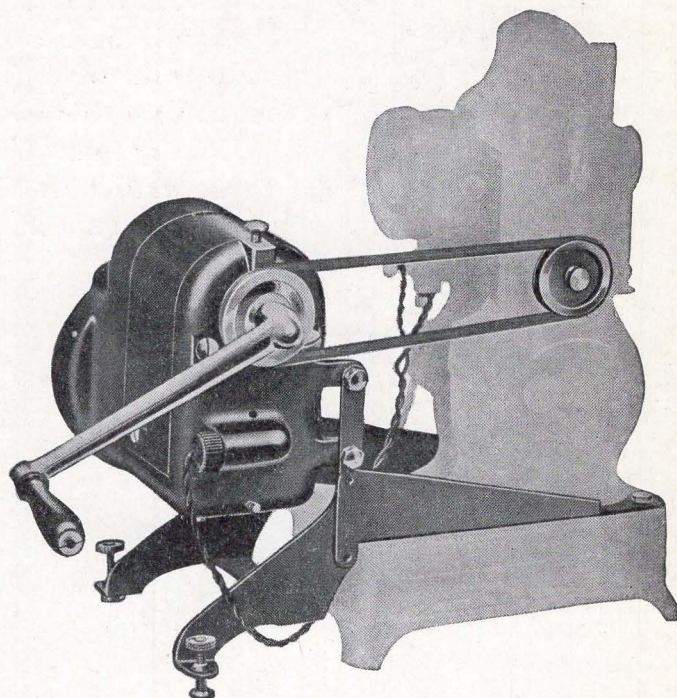


TWO-WAY SWITCH. Facilitates loading the projector in a darkened room. One turn of the knob turns off the switch lamp, lights the projector lamp, and starts the motor simultaneously; a second turn shuts off the motor and projector lamp, and lights the lamp at the switch. \$3.00



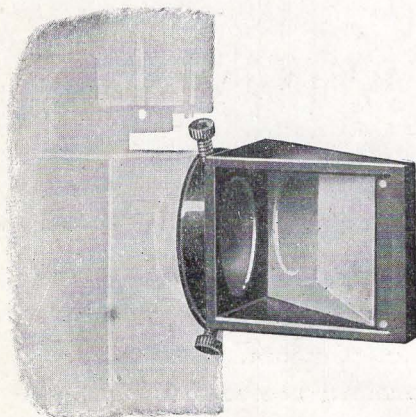
THREE-WAY CORD. Similar in purpose to the two way switch. Turns on and off the lighting in the room instead of the bulb on the switch. Enables darkening the room and starting the projector simultaneously and vice versa. Complete with eight foot cord, plug, and push-button snap switch..... \$3.00

DYNAMO. For use where house current is not available. Provides current for the Projector thus obviating the need for batteries. Easily attached. The crank drives both the generator and Projector. By a patented feature the operator is enabled to stop the projector while continuing to supply current to the lamp. Will fit any model Pathé projector, but requires the use of the 6 volt lamp.\$55.00



ATTACHMENT for 32 volt use. Device to be placed on the projector resistance so that use may be made of 32 volt house lighting current.10c

ATTACHMENT for 220 volt use. Designed to make possible the use of the projector on house current of 220 volts. Easily installed..... \$3.50

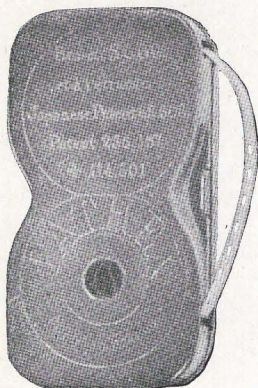


REFLECTING MIRROR. For use with translucent projection. When mounted in front of the projector lens, this mirror reverses the image — so that it looks right when projected from the rear of the translucent screen.....\$3.00

CASE for PROJECTOR, with Super Attachment and air cooled motor mounted. Strongly made, reinforced corners. Protects the projector from dust, and is indispensable for carrying the machine from place to place...\$7.50

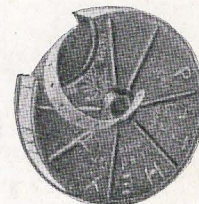


PATHE FILMS



MOTOMAGAZINES for MOTOCAMERA. The Motomagazine consists of the day-light loading spool containing approximately twenty-six feet of non-inflammable 9½ millimeter film ready for instant use. It is developed free of charge at the Pathé laboratories. Any number of duplicates may be made at the owner's wish at a nominal price. Developed film is returned to the user on thirty foot spools as illustrated at the right. Motomagazine.....\$1.75

MAGAZINES for the Hand Driven Camera. With or without the Automatic Drive. \$1.75

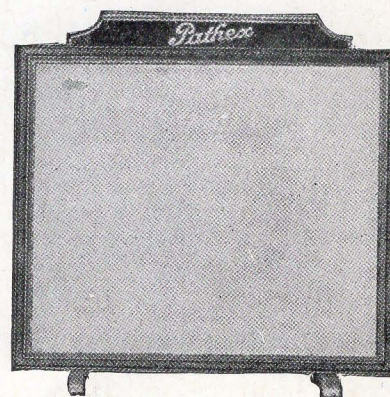


EXHIBITION FILMS. Hundreds of different subjects are available in the Pathé 9½ millimeter library for use with the Pathé projector. New films are constantly being released from the great library of standard size films of Pathé Exchange. These pictures cover comedy, drama, art, travel, animated cartoons, sport and current events from the Pathé Review and News, etc. A complete list of these subjects may be had from your dealer or a descriptive catalog with a synopsis of each film for ten cents.

SCREENS

SILVER SCREEN. This screen has a metallic surface 36x42 inches. Mounted on a roller and is very satisfactory for home use.....\$5.25

UPRIGHT COMBINATION SCREEN. The screen illustrated at the right consists of a double 14x16 surface. One side is silvered and the other side is beaded the same as the larger screens. May be conveniently placed on table or desk.\$3.00

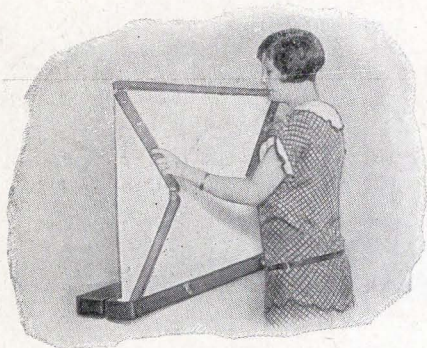
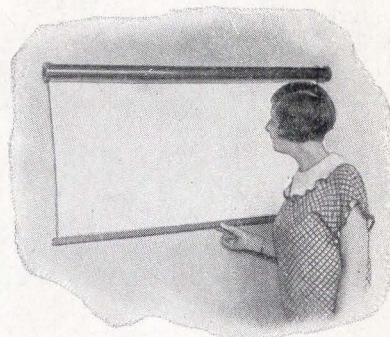




BRITE LITE BEADED SCREENS. These screens considerably increase the amount of projected light. Should dirt or dust gather from continued use the surface may be easily washed.

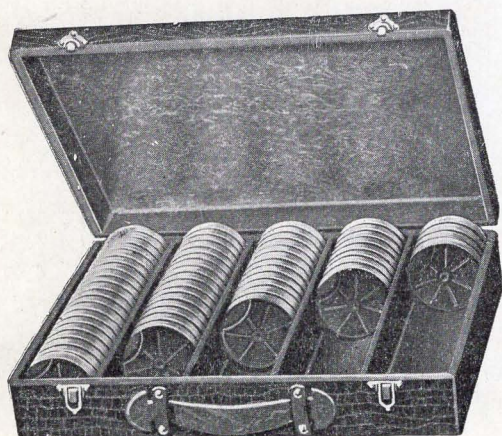
Brite Lite Number One. Conveniently mounted in map type case on a smooth running roller. Pulls down like a window shade. Size 26x34 inches.....\$7.50

Brite Lite Number Two. Similar to the above only slightly larger. Size 30x40 inches.....\$9.00



Brite Lite Number Three. This portable self erecting model is mounted in a sturdy case from which it may be raised and lowered with ease. Equipped with handle. Weighs only 8½ pounds. Size 30x40 inches.....\$15.00

SUNDRIES

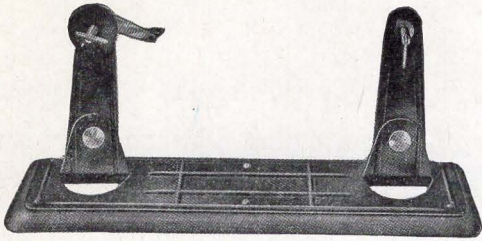


CASE for EXHIBITION FILMS. Holds one hundred of the sixty foot exhibition films. Substantial wooden frame covered with brown leatherette. Provides a convenient and orderly method for keeping your film subjects.....\$4.50

EMPTY FILM SPOOLS — 30 foot. Useful for film editing. 20c

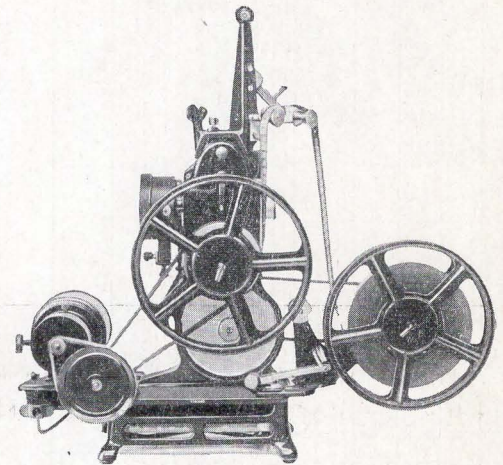
— 60 foot — has proved popular for the mounting of two thirty foot library subjects or amateur films on a single spool.....25c

EMPTY SUPER REEL. The Super REEL is for use with the SUPER Reel Attachment. It accommodates over three hundred feet of 9½ millimeter film.\$1.00



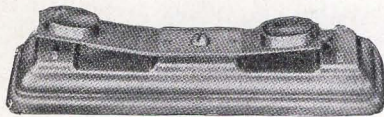
SUPER REWINDER — Hand Driven. For rewinding Super films by hand after projection, independently of the projector. Finished in Black japan and nickel. **\$3.00**

SUPER REWINDER — Motor Driven. Makes possible the rewinding of the Super film by motor. Consists of guide rollers which are attached to the upper arm of the Super Attachment and a drum which is quickly mounted on the driving shaft to hold the rewind spool; the motor does the rest. Eliminates hand rewinding on the projector or the Super Rewinder and is intended for use only with the air-cooled motor. **\$5.50**



HUMIDOR for SUPER FILM. A compact metal container protecting the film from dust and scratches. By means of the humidifying pad, moistened occasionally, the film is kept pliable. **75c**

MAGAZINE CONTAINER for tropical use. Light weight aluminum case to hold three magazines. Air tight and water tight. Indispensable for travelers. **60c**



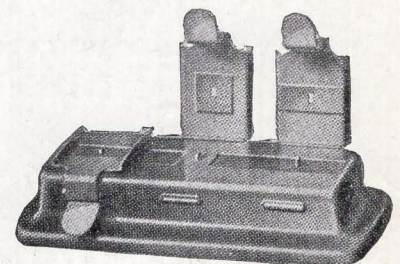
FILM NOTCHER and SLOTTER. Enables the amateur to notch his own stills and titles for the automatic stop action and to make the long slot for stopping the film when the end has been reached, Nickel plated finish. **\$1.50**

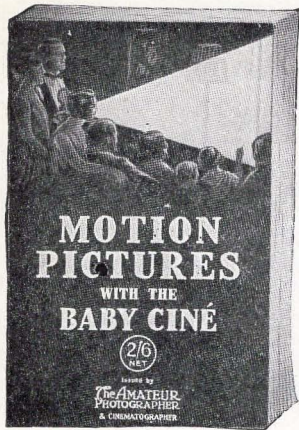
FILM SPLICER. This all metal nickel plated splicer should be in the kit of every projector owner. In addition to the pressure clamp, the splicer has two clamps to hold the film ends in place while the splice is being made. **\$1.50**

Oil. A neutral and non-clogging oil. **15c**

FILM CEMENT. Prepared for use with the non-inflammable film of which Pathé library films and raw films are made. **25c**

FILM CLEANER. Quickly removes dust, oil, or other foreign matter from either side of the film without damage to the picture thereon. **50c**





HANDBOOK. "Motion Pictures with the Baby Cine" Published in England by the Amateur Photographer and Cinematographer. This book should be in the hands of every Pathé owner.....\$1.00

ILLUSTRATED FILM CATALOG. Listing the film subjects available in the Pathé film library. A synopsis is given of each subject listed. 10c

SERVICE

Pathextracts is a leaflet issued each month for the benefit of Pathé owners. It is concerned with items of general interest to the home movie maker. It also lists the month's new releases of film subjects with a synopsis of each film. Illustrations are also included. Pathextracts is sent to every user of Pathé equipment for the asking.

Owners of Pathé equipment who have damaged their camera or projector can be certain of expert repair service at the Pathé plant. Should some repair be necessary, simply ship the machine to our plant at No. 1 Congress Street, Jersey City. Care should be exercised to see that the article is carefully wrapped for shipping so as to avoid damage.

Film magazines which are sent to us for development are returned to the customer within twenty-four hours.

We are prepared to make titles at a cost of fifty cents per title, maximum of twenty words. This includes a foot of film of the user's title which can be inserted in the desired place.

We are prepared to make reduction of 35mm standard film to 9 $\frac{1}{2}$ mm size. We make these reductions from positive film at a cost of 6c per foot — minimum charge of \$9.00. This price includes three prints. The charge for reduction from negative film is 10c per foot with a minimum of \$15.00; this also includes three prints. It is impossible for us to make reductions from 16mm to 9 $\frac{1}{2}$ size. Nor are we prepared to make enlargements from 9 $\frac{1}{2}$ mm to 16mm or 35mm films.



Some Super Film Subjects

Pathé has a 9½mm. film library of over 400 subjects. A partial list of the Super-reels available is given below. This will indicate the wide variety of films which are at the disposal of the Pathé owner. The Super film is for use solely with the Pathé Projector equipped with the Super-reel Attachment and gives a continuous projection of from 14 to 20 minutes. The cost of the Super Film is \$9.50 per reel.

Western

- O-1 "The Frontier Trail"
- O-3 "Rough Going"
- O-5 Buddy Roosevelt in "Ride 'em High"

Drama

- O-2 "The Golden Clown"
- O-28 Rod La Roque and Phyllis Haver in "The Fighting Eagle"

Comedy

- O-34 Our Gang in "A Pleasant Journey"
- O-6 Our Gang in "Love My Dog"
- O-8 Our Gang in "Dog Days"
- O-11 Our Gang in "House of Mystery"
- O-12 Our Gang in "Fast Company"
- O-13 Our Gang in "Sundown Limited" —
2 super reels
- O-30 Our Gang in "Boys to Board"
- O-4 Douglas MacLean in "Yankee Consul"
- O-14 Billy Bevan in "Hoboken to Hollywood"
- O-15 Ben Turpin in "Yukon Jake"
- O-29 Will Rogers in "A Truthful Liar" —
2 super reels
- O-31 Snub Pollard in "It's a Joy"
- O-33 "The Fraidy Cat"

Sport

- O-7 Big Game Hunting in Africa
- O-9 Crystal Champions
- O-10 Alaskan Adventures — 2 super reels
- O-32 The Art of Self Defense



Price List

PATHE PROJECTORS

Motor Driven Projector.....	\$54.00
Hand Driven Projector.....	39.00

PATHE CAMERAS

Motocamera F3.5 lens.....	45.00
Motocamera F2.7 lens.....	85.00

PROJECTOR ACCESSORIES

Super-reel Attachment.....	18.00
Motor — Domestic.....	15.00
Motor — French Air-cooled.....	21.00
Lamp — Regular.....	1.25
Lamp — Special 6 volt for Battery Use.....	1.25
Anti-caloric Super-condensor.....	3.00
Magnifier (Amplifier).....	3.00
Two-way Switch.....	3.00
Three-way Cord.....	3.00
Dynamo (where no current is available).....	55.00
Attachment for 32 volt use.....	.10
Attachment for 220 volt use.....	3.50
Reflecting Mirror (for translucent projection).....	3.00
Case for Projector with Super-attachment and air-cooled motor mounted.....	7.50

CAMERA ACCESSORIES

Automatic Drive for Hand Driven Camera.....	18.00
Case for Motocamera Cowhide, Black or Tan.....	8.50
Case for Hand Driven Camera with Auto-Drive.....	6.75
Lens Sets (Portrait Attachments and Filter).....	6.00
Sun Shield.....	.25
Title-making Stand (with lens).....	6.00
Tripod (for Hand Driven Camera).....	1.50
Box View Finder.....	2.50



PRICE LIST

PATHE FILMS

Motomagazines for Motocamera, approximately 26', including processing.....	1.75
Magazines for Single Claw Camera (Pathex).....	1.75
Exhibition Films on 30' Spools.....	.75
Exhibition Films on 60' Spools.....	1.75
Exhibition Films on 300' Super-reels.....	9.50

SCREENS

Beaded Screen 14 x 16.....	3.00
Brite Lite No. 1 26 x 34.....	7.50
Brite Lite No. 2 30 x 40 (roll).....	9.00
Brite Lite No. 3 30 x 40 (upright).....	15.00

SUNDRIES

Case for 100 — 60' Exhibition Films.....	4.50
Super-reel Rewinder — Hand.....	3.00
Super-reel Rewinder — Motor Driven.....	5.50
Empty Film Spool 30'.....	.20
Empty Film Spool 60'.....	.25
Empty Super-reel 300'.....	1.00
Humidor for Super-film.....	.75
Magazine Container (for Tropical use).....	.60
Film Notcher & Slotter.....	1.50
Film Splicer.....	1.50
Film Cement.....	.25
Film Cleaner.....	.50
Oil.....	.15
Exhibition Film Catalog.....	.10
Handbook on 9½mm. Equipment.....	1.00
("Motion Pictures with the Baby Cine")	

COMPLETE PATHEX STOCK
WESTWOOD ELECTRIC CO.
1608 OCEAN AVE., SAN FRANCISCO, CAL.
"SHIPPED ANYWHERE"

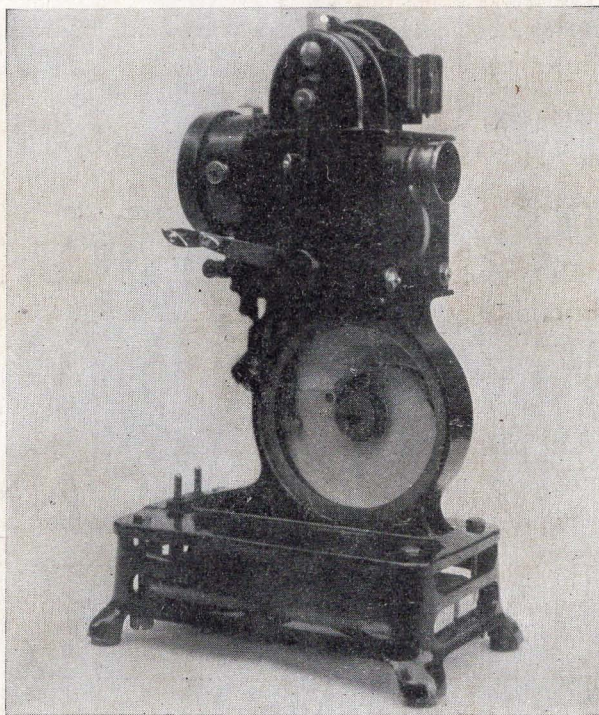
PATHEX, INC.
35 West 45th Street
New York City



PATHEX, INC.

35 West 45th Street

New York City



MOTOR DRIVEN PROJECTOR

For Sale By

COMPLETE PATHEX STOCK
WESTWOOD ELECTRIC CO.
1608 OCEAN AVE., SAN FRANCISCO, CAL.
"SHIPPED ANYWHERE"