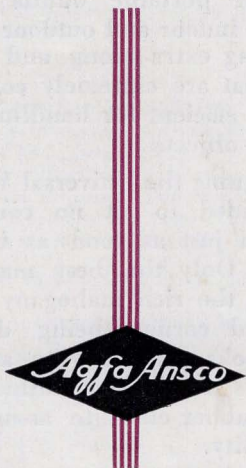
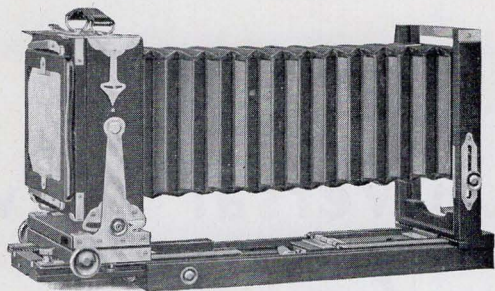

Ansco Universal View Cameras



AGFA ANSCO CORPORATION
BINGHAMTON, N. Y.



The AnSCO Universal View Camera

8 x 10 and 5 x 7

THESE cameras have taken their place as standard portable outfits for miscellaneous indoor and outdoor professional work, being extra-strong and rigid, with features that are extremely convenient, reliable, and efficient for handling the widest variety of subjects.

In designing the Universal View cameras it was decided to cut no corners, but to make them just as good as such cameras could be. Only the best materials have been used, the rich mahogany finish and metal-bound corners being designed not only for looks, but for wear and long use. The bellows are of black leather, lined with gossamer rubber cloth to assure durability and flexibility.

All models are built for those wishing to enjoy the use of a completely satisfying equipment, adapted to many needs.

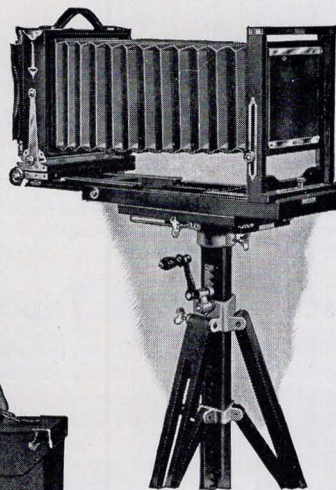


Illustration above shows AnSCO Universal Camera on Universal Tripod Stand, \$25 extra (described on back page).

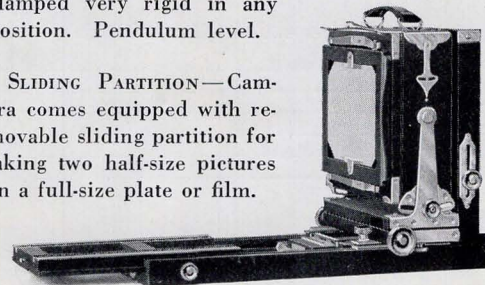


Illustration at left shows carrying case, included in price of camera.

Points about These Outfits

EXTENSION, like AnSCO Studio camera: extension bed is contained within main bed, never in the way, but always ready when long-focus lens is used. When short focus or standard lens is used, the extension bed remains rigid within main bed, and the most accurate focusing can be done without bed projecting against operator. Camera is complete when folded to go into the case; no section to remove and carry separately. FOCUSING by rack and pinion with large knobs from either right or left side. RUNNERS are made of heavy brass, with machine-cut grooves that slide in metal track on bed—metal in metal, not metal in wood. Runners are unusually long, with a new clamping device for clamping camera rigidly to track when desired focus is obtained, assuring the accuracy of adjustment so important for high-class work. AMPLE FRONT ACTION vertically and horizontally; rising and falling front action is locked or unlocked on a cam by pulling pinion rod either in or out. AMPLE SWING at back vertically and horizontally; can be clamped very rigid in any position. Pendulum level.

SLIDING PARTITION—Camera comes equipped with removable sliding partition for taking two half-size pictures on a full-size plate or film.



Price List

Prices, complete with carrying case and one double holder (cut-film holder supplied unless plate holder is specified) and extra lens board:

8 x 10	\$75.00
5 x 7	65.00

The 4 x 5 and $3\frac{1}{4}$ x $4\frac{1}{4}$ sizes are no longer supplied.

Lens and shutter not included in above prices.
Extras and accessories:

Extension cone for 8 x 10, increasing focal capacity to 32 inches\$ 5.00

Sliding ground-glass carriage for making two pictures on one plate, 8 x 10 or 5 x 7 30.00

Adapters:

7 x 11 for 8 x 10 camera, with case.....	\$24.00
7 x 11 for 8 x 10 camera, without case.....	18.00
5 x 7 for 8 x 10 camera (no case).....	15.00
$6\frac{1}{2}$ x $8\frac{1}{2}$ for 8 x 10 camera (no case).....	16.00
$3\frac{1}{4}$ x $5\frac{1}{2}$ for 8 x 10 camera (no case).....	14.00
4 x 5 for 5 x 7 camera (no case).....	14.00
$3\frac{1}{4}$ x $4\frac{1}{4}$ for 4 x 5 camera (no case).....	9.00

One holder included with each adapter.

AnSCO plate holders and cut-film holders:

8 x 10 and 7 x 11, each.....	\$ 2.50
$6\frac{1}{2}$ x $8\frac{1}{2}$	2.25
5 x 7	2.00
4 x 5 and $3\frac{1}{4}$ x $4\frac{1}{4}$	1.50
Universal Tripod Stand	25.00
Utility Tripod	17.50

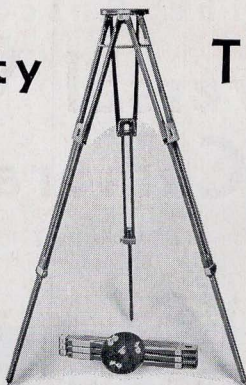
Focal capacity:

CAMERA	MAXIMUM	MINIMUM
8 x 10	$26\frac{1}{2}$	4
5 x 7	$20\frac{1}{2}$	4

AnSCO

Utility

Tripod



A professional tripod of dependable rigidity and strength for use with all view and other professional cameras.

Maximum extension, top to tip of leg, a trifle under 60 inches. Minimum extension, $41\frac{1}{2}$ inches. Diameter of top, $7\frac{1}{2}$ inches. Length of legs folded, 24 inches.

Price \$17.50

AnSCO Universal Tripod Stand

Flexible and secure for supporting professional size cameras in both indoor and outdoor work.

Special features include: raising and lowering device that locks center post without set-screw adjustment. Revolving top giving both perpendicular and vertical surfaces. Triple leg-brace action that may be raised and locked for working in restricted space. Maximum extension 60 inches, minimum extension 34 inches. Portable, convenient, and professional in appearance. Price **\$25.00**. See illustration inside.