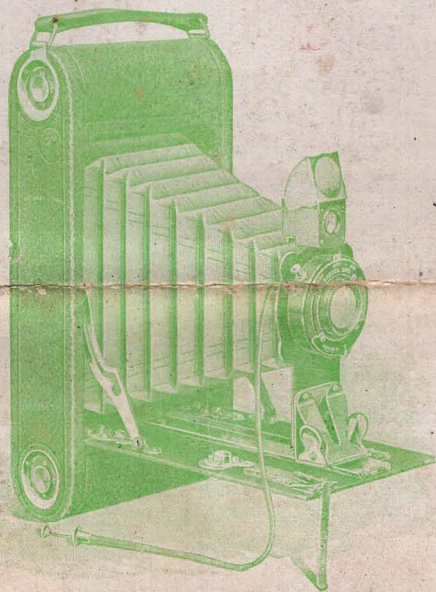


This is the Folding Scout Camera

Latest Creation of the
Seneca Camera Mfg. Company
ROCHESTER, N. Y.



*Sells to you at Eight Dollars and upwards
What do you think of that for value?*

The New Roll Film Seneca



THE FOLDING SCOUT is distinctively individual as shown by the illustrations, and creates a new era in camera making. Every photographic appointment known to be of value is in evidence and embodied in this instrument. It is the first low price, upright, round end model Roll Film Camera to appear upon the photographic horizon, and is as far in advance of other makes as the electric light is over the kerosene lamp.

Comparison of prices will promptly show it has no equal, and offered at about half the price established by other makers. That while upon the market but a few weeks it is producing greater excitement and meeting with more favor than any camera yet shown.

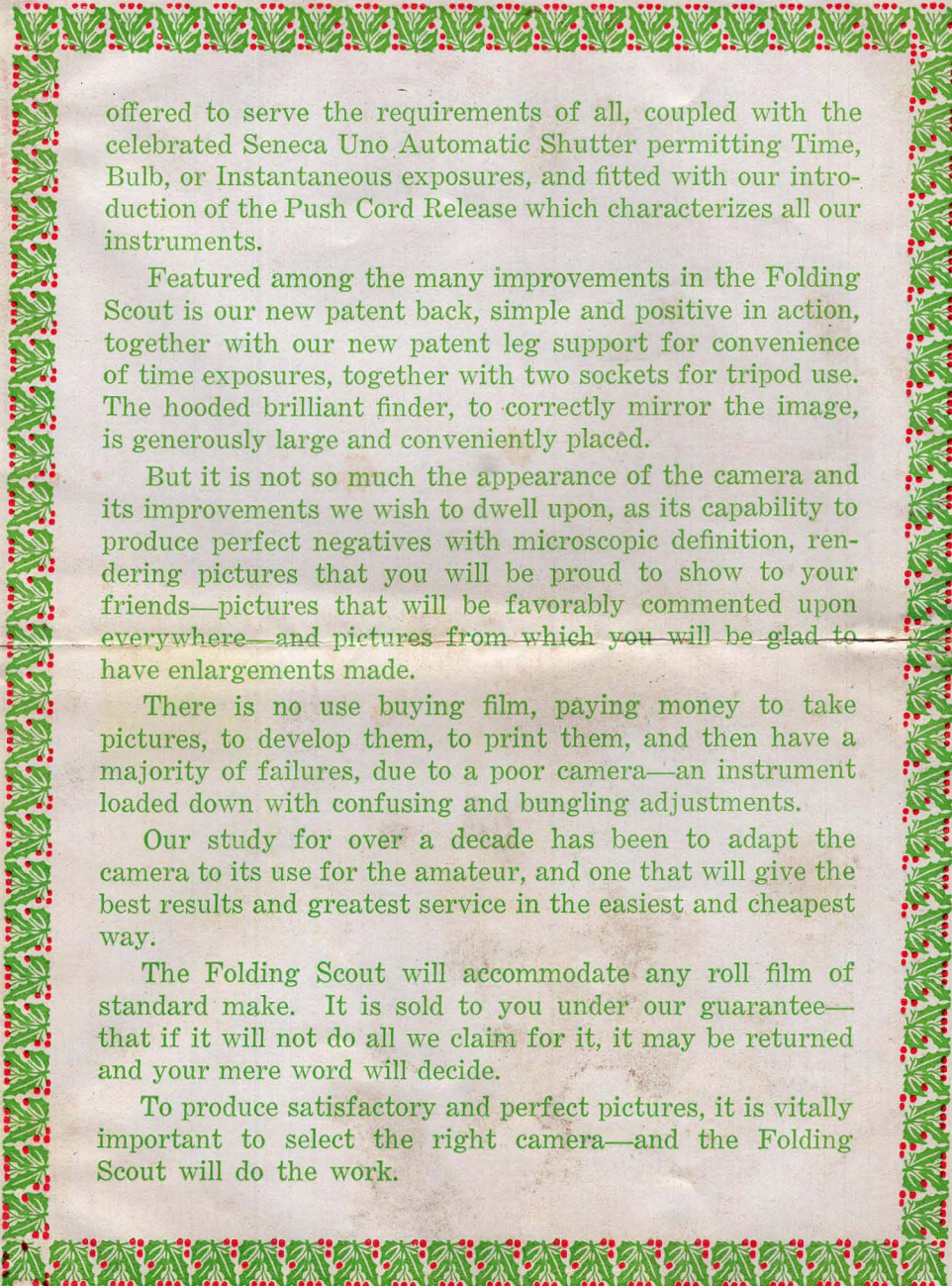
It is compact, light and substantial in construction, being made wholly of aluminum with reinforced wood sides and covered with black seal-grain, water-proof, wear-resisting material, having genuine Russia leather bellows. All metal adjustments are made of heavy brass, highly nickeled finish.

The Folding Scout is not a toy but a real high grade photographic instrument, so simple in operation that the beginner can take it right out of the box and start making perfect pictures, and so complete that the most advanced photographic artist is in possession of a product designed for his most exacting work. It is, in short, the *multum in parvo* in the art of camera construction.

Ample focal capacity is provided for rendering pictures of correct proportions, while the choice of lens equipment is



Folding Scout Closed



offered to serve the requirements of all, coupled with the celebrated Seneca Uno Automatic Shutter permitting Time, Bulb, or Instantaneous exposures, and fitted with our introduction of the Push Cord Release which characterizes all our instruments.

Featured among the many improvements in the Folding Scout is our new patent back, simple and positive in action, together with our new patent leg support for convenience of time exposures, together with two sockets for tripod use. The hooded brilliant finder, to correctly mirror the image, is generously large and conveniently placed.

But it is not so much the appearance of the camera and its improvements we wish to dwell upon, as its capability to produce perfect negatives with microscopic definition, rendering pictures that you will be proud to show to your friends—pictures that will be favorably commented upon everywhere—and pictures from which you will be glad to have enlargements made.

There is no use buying film, paying money to take pictures, to develop them, to print them, and then have a majority of failures, due to a poor camera—an instrument loaded down with confusing and bungling adjustments.

Our study for over a decade has been to adapt the camera to its use for the amateur, and one that will give the best results and greatest service in the easiest and cheapest way.

The Folding Scout will accommodate any roll film of standard make. It is sold to you under our guarantee—that if it will not do all we claim for it, it may be returned and your mere word will decide.

To produce satisfactory and perfect pictures, it is vitally important to select the right camera—and the Folding Scout will do the work.

Volumes could be presented upon the true merits of the Folding Scout. It is all we claim it to be and more. Already it has found its place among the fore front of the most exacting and it can be safely predicted is destined to meet with universal favor and being offered in the three most popular sizes affords a selection to meet the requirements of all.

SPECIFICATIONS AND PRICES

Camera—Round End type—Aluminum—covered.

Back—Improved one-piece double lock.

Capacity—No. 2A and No. 3—12 exposures without reloading.

No. 3A—10 exposures without reloading.

Weight—No. 2A—24 ounces, No. 3—27 ounces, No. 3A—30 ounces.

Dimensions—No. 2A $8\frac{1}{2} \times 3\frac{7}{8} \times 2$ inches

No. 3 $8\frac{1}{4} \times 4\frac{1}{2} \times 2$ inches

No. 3A $9\frac{3}{4} \times 4\frac{3}{4} \times 2$ inches

Focal Capacity—No. 2A $5\frac{1}{2}$ inches

No. 3 6 inches

No. 3A 7 inches

Film Chamber—Improved with spool pins.

View Finder—Brilliant reversible with hood.

Tripod Sockets—Two.

Shutter—Uno Automatic (dustproof) with Push Cord Release.

Lenses—Meniscus Achromatic or Rapid Rectilinear.

Manual of Photography, Instruction Book.

PRICE OF OUTFIT COMPLETE

	No. 2A	No. 3	No. 3A
Folding Scout with Meniscus Achromatic Lens and Uno Automatic Shutter	$2\frac{1}{2} \times 4\frac{1}{4}$ \$8.00	$3\frac{1}{4} \times 4\frac{1}{4}$ \$9.00	$3\frac{1}{4} \times 5\frac{1}{2}$ \$10.00
Folding Scout with Rapid Rectilinear Lens and Uno Automatic Shutter	10.00	11.00	12.00
Black Sole Leather Carrying Case with strap	1.50	1.75	2.00
Film Cartridge, Vulcan Non-curling	No. 232—6 Expo. .25	No. 248—6 Expo. .35	No. 244—6 Expo. .40
	12 Expo. .50	12 Expo. .70	10 Expo. .70
Portrait Attachment for Folding Scout50	.50	.50