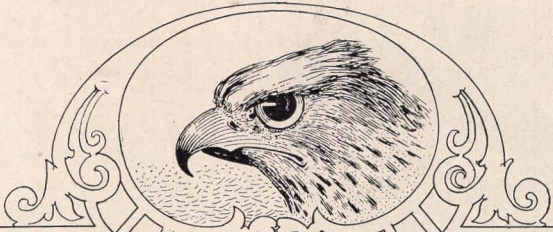




**HAWK-EYE**  
CAMERAS



**HAWK-EYE  
CAMERAS**  
AND  
**SUPPLIES**

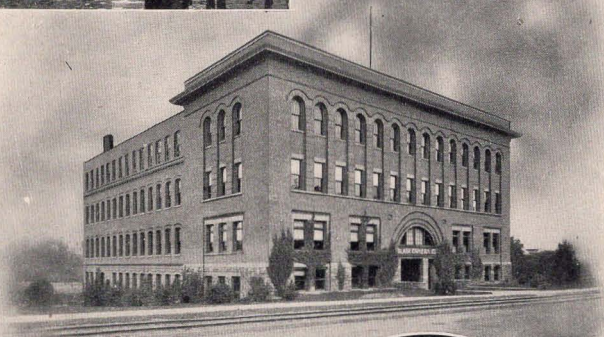
1907

**BLAIR CAMERA COMPANY**  
ROCHESTER, N.Y.  
U.S.A.





# THE HAWKEYE CAMERA



LANDSCAPE  
ARCHITECTURE  
PORTRAITURE

---

---

## The Camera

---

**M**ORE and more are the practical uses of the camera becoming known and taken advantage of. With the business man it is becoming almost indispensable.

Nowadays the catalogue is well nigh in universal use and in many instances houses make it their only salesman. How much better a cut of the article describes it and how much clearer idea a prospective customer gets of it than from any description that can be written. And, even where the description does tell the story well, the cut exemplifies and makes a lasting impression on the memory.

Business houses these days own their own cameras and take their own photographs, which are sent to the printer along with descriptive matter for the catalogue. Thus the printer can turn out a finished product, making something which is, indeed, a silent salesman, and even where the salesman is employed, in many cases big sample trunks have been done away with and a grip of photographs is used.

The heads of large contracting concerns can have before them, each day of the week, photographs showing the progress of work on all jobs which the company is doing, and, at a glance, can see what has been done, taking in the situation in less time and gaining a better knowledge than any descriptive words can give.

The use of the camera for pleasure is growing yearly. There are still vacation scenes to be reproduced to aid the memory in recalling the pleasures of the yearly surcease from labor. The walk in the country is made doubly enjoyable when one can carry home the rural view which has caught the eye. The merry party may be taken for contemplation at some time when perhaps care broods over one.

Indeed, it seems almost superfluous to recount the advantages of the camera from a standpoint of pleasure.

For all these uses the HAWK-EYE camera has hardly an equal and no superior, and we present it to your attention this year with renewed confidence. We are consistent and follow out our own preaching in presenting to you a catalogue plentifully illustrated and from which you can see we have not stood idle during the past year. The many advantages which the HAWK-EYE has over other cameras cannot fail to engage your attention and we solicit your patronage with the feeling that in gaining you as a customer we shall attach you to ourselves as a friend.

---

---

## Hawk-Eye Construction

---

---

**QUALITY—IS THE WATCHWORD:** Thus the position the HAWK-EYE holds in the camera world is beyond reproach.

In the selection of materials used in the manufacture no expense is spared, as experience has taught us that the best is the cheapest.

The wood parts are built up of sectional pieces, eliminating warping, shrinking and swelling. The metal parts are struck up from accurately made dies so that each piece is identically the same and any part of one HAWK-EYE is interchangeable with similar part of another.

### Film

**HAWK-EYES** are constructed to use Blair or Eastman Non-Curling Film. The tourist, therefore, has no trouble in obtaining supplies, as they can be purchased in any part of the world where photo materials are sold. Blair and Eastman Non-Curling Film are put up in the same manner, each having a strip of black paper running the entire length of the film, thus excluding the light from coming in contact with the sensitive surface, and enabling the user to load and unload the Hawk-Eye in daylight. The numbers on the back pass under the ruby window in the back of the camera, which tells when the film is in position for exposure.



Blair Non-Curling Films are furnished in six and twelve exposure lengths and arranged to be developed in the Kodak Tank Developer or Kodak Developing Machine by following the instructions which accompany each roll.

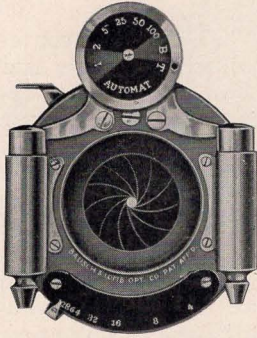
---

---

## Shutter Equipment

---

### B. & L. Automatic Shutter



ALL the latest and best ideas are embodied in the B. & L. Automatic Shutter. It is of the highest grade, strictly automatic, perfectly balanced and accurately regulated as to the variation of speed, ranging from one second to  $\frac{1}{100}$  of a second, also time and bulb. An Iris diaphragm allows the aperture to be changed at will. We recommend this shutter for use with anastigmat lenses. Furnished as

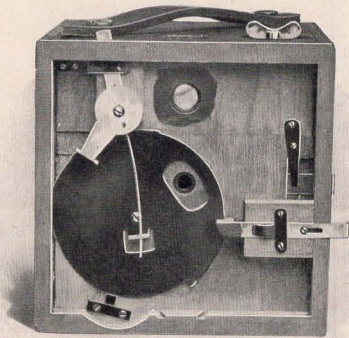
regular equipment on the following Hawk-Eyes:

- No. 3-B Folding Hawk-Eye, Model 2.
- No. 3 Folding Hawk-Eye, Model 4.
- No. 4 Folding Hawk-Eye, Model 3.
- No. 4 Folding Hawk-Eye, Model 4.

Price, No. 1 B. & L. Automatic Shutter, - \$10.00

### Shutter Used on Nos. 2, 4, 5, and 6 Weno Hawk-Eye

THE Hawk-Eye Rotary Shutter is used on the box style of cameras, and in connection with a single set focus Meniscus Lens, makes an ideal combination. Being rotary in design and evenly balanced, it works with the same speed and accuracy in either horizontal or vertical position. The exposures are made



by pushing the release lever to the right or left or vice versa, and it is easily changed from instantaneous to time by drawing out the time catch. The Hawk-Eye Rotary Shutter is thoroughly reliable and is one of the main features which make the Weno Hawk-Eye popular.

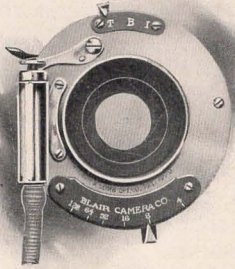
---

---

## Shutter Equipment

---

### Shutter Used on Nos. 3 and 3-B Folding Hawk-Eye



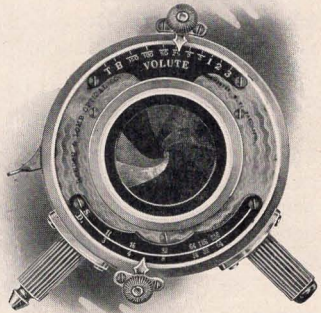
**A** SHUTTER of convenience, simplicity and perfection; dainty in its appearance, and of the highest grade of single valve type. It has both finger and bulb release, making an exposure when set on "I" of about  $\frac{1}{50}$  of a second. "T" indicates time, requiring one pressure to open and another to close. "B" is a time exposure in reality, the shutter

remaining open as long as the pressure is held on the bulb or the finger release is held down. Regularly furnished on the No. 3 Folding Hawk-Eye, Model 3, and No. 3-B Folding Hawk-Eye, Model 1.

### B. & L. Volute Shutter

**T**HE opening and closing point of the Volute Shutter being at the diaphragm point in the lens, gives the maximum illumination with the minimum motion, absolutely uniform exposure and an increase in the depth of focus, covering power, and definition of the lens, with no distortion of the image; the entire picture impressing itself upon the plate from the moment the shutter begins to open until it closes.

It is made of aluminum, handsomely finished, rapid, compact, convenient, dust proof and durable. It gives exposures varying from three seconds to  $\frac{1}{150}$  of a second, all controlled automatically by a pneumatic retarding device. It is also arranged for time and bulb exposures.



Price, No. 1 B. & L. Volute Shutter, - \$17.00

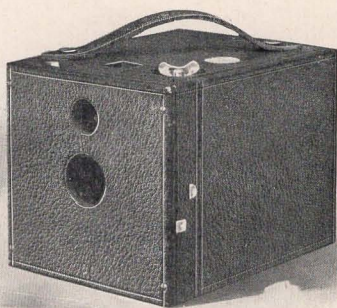
---



---

## No. 2 Weno Hawk-Eye

---



Dimensions,  $4\frac{1}{4} \times 4\frac{1}{2} \times 5\frac{1}{2}$  inches.      Weight, 20 ounces.  
 Size of Photo,  $3\frac{1}{2} \times 3\frac{1}{2}$  inches.      Capacity, 12 exposures.

**T**HIS instrument makes a picture  $3\frac{1}{2} \times 3\frac{1}{2}$  inches, which has been a very popular size for the past twelve years. It is moderate in price, and while it is very simple in construction, yet it has many improvements not included in cameras at twice its cost. It is fitted with an Achromatic Lens  $4\frac{1}{2}$ -inch fixed focus, rotary shutter, described on page 5, which is always set, three diaphragm stops for enlarging and reducing the aperture in accordance with the volume of light required for properly timing the negative, a square brilliant finder, and tripod socket.

The No. 2 Weno Hawk-Eyes are covered with morocco grain leather and the trimmings are nickeled, giving the camera a very neat and handsome finish. All the parts are intact, so there is no danger of losing a ratchet, rod or cover in loading or unloading. The Film adapted for use in this Hawk-Eye is known as No. 2 Bull's Eye, Blair Non-Curling or Kodak Film.

---

### Price List

No. 2 Weno Hawk-Eye, not loaded,	\$5.00
Blair Non-Curling Cartridge Film, 6 exposures, $3\frac{1}{2} \times 3\frac{1}{2}$ ,	.30
Blair Non-Curling Cartridge Film, 12 exposures, $3\frac{1}{2} \times 3\frac{1}{2}$ ,	.60
Weno Hawk-Eye Portrait Attachment,	.50
Black Sole Leather Carrying Case with shoulder strap,	1.25



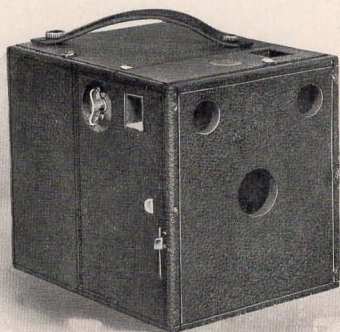
---



---

## No. 4 Weno Hawk-Eye

---



Dimensions, 5 x 5 $\frac{3}{4}$  x 6 $\frac{1}{2}$  inches.  
 Size of Photo, 4 x 5 inches.

Weight, 28 ounces.  
 Capacity, 12 exposures.

**T**HE No. 4 Weno Hawk-Eye makes a picture 4 x 5 inches and though of box type is only about half the size of the usual non-folding cameras. A special feature in this instrument is that the lens is always in focus and all objects from 8 feet to any distance required are covered sharply.

The shutter is of rotary design and fully described and illustrated on page 5.

Three diaphragm stops are provided for changing the lens aperture according to the strength of light. Horizontal and vertical brilliant finders are placed in position for centering the object accurately, and sockets are provided for attaching the camera to tripod in either position.

This Hawk-Eye is arranged to use No. 4 Bull's Eye, Blair Non-Curling or Kodak Film, and is covered with seal grain morocco leather, giving it a rich and handsome finish.

---

### Price List

No. 4 Weno Hawk-Eye, not loaded,	\$8.00
Blair Non-Curling Cartridge Film, 6 exposures, 4 x 5,	.45
Blair Non-Curling Cartridge Film, 12 exposures, 4 x 5,	.90
Weno Hawk-Eye Portrait Attachment,	.50
Black Sole Leather Carrying Case, with shoulder strap,	1.50

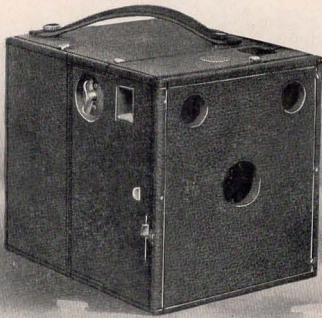
---



---

## No. 5 Weno Hawk-Eye

---



Dimensions,  $4\frac{1}{2}$  x  $5\frac{1}{4}$  x  $6\frac{1}{2}$  inches.      Weight, 27 ounces.  
 Size of Photo,  $3\frac{1}{4}$  x  $4\frac{1}{4}$  inches.      Capacity, 12 exposures.

**T**HE No. 5 Weno Hawk-Eye makes a photo  $3\frac{1}{4}$  x  $4\frac{1}{4}$  inches, and is a very compact box form instrument, provided with an automatic shutter and universal focus lens, which enables the user to make snap shots of many subjects which would be lost in an attempt to get the folding camera in readiness for operation. The construction is exceedingly simple; the back section telescoping, which is easily removed by releasing the catch, thus giving access to the film chambers. All parts are intact and the camera is loaded without removing any rods, ratchets or screws.

The No. 5 Weno Hawk-Eye is provided with horizontal and vertical brilliant finders for centering the object on the film, also sockets for attaching to tripod.

The No. 5 Weno Hawk-Eye is handsomely and richly finished in seal grain morocco leather and uses daylight loading film cartridges known as No. 3 F. P. K., Non-Curling Blair or Eastman Film.

---

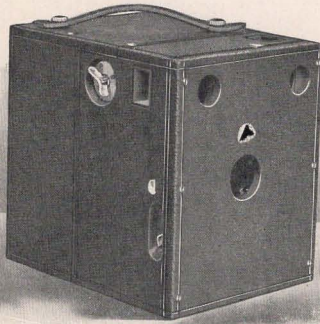
### Price List

No. 5 Weno Hawk-Eye, not loaded, . . . . .	\$7.50
Blair Non-Curling Cartridge Film, 6 exposures, $3\frac{1}{4}$ x $4\frac{1}{4}$ , . . . . .	.35
Blair Non-Curling Cartridge Film, 12 exposures, $3\frac{1}{4}$ x $4\frac{1}{4}$ , . . . . .	.70
Weno Hawk-Eye Portrait Attachment, . . . . .	.50
Black Sole Leather Carrying Case, with shoulder strap, . . . . .	1.50

---

## No. 6 Weno Hawk-Eye

---



Dimensions,  $5\frac{1}{2} \times 6\frac{3}{8} \times 6\frac{1}{2}$  inches.      Weight, 30 ounces.  
Size of Photo,  $3\frac{3}{4} \times 5\frac{1}{2}$  inches.      Capacity, 10 exposures.

**T**HIS Hawk-Eye is simple in construction, yet possessed of every feature necessary to produce excellent pictures. It has a Meniscus Achromatic Lens with fixed focus of 5 inches, covering the field with extreme sharpness of distances ranging from 8 to 100 feet or more. It has a capacity of ten exposures,  $3\frac{3}{4} \times 5\frac{1}{2}$  (the post card size), a shape which produces artistic landscapes when used horizontally, or with the addition of a Hawk-Eye portrait attachment, portraits of delicate softness when used in a vertical position.

The No. 6 Weno Hawk-Eye has a Hawk-Eye Rotary Shutter, two brilliant finders and two tripod sockets. It is covered with seal grain leather, has nickeled fittings, and is handsomely finished. Like all other Hawk-Eye Cameras it uses daylight loading film cartridges, either Blair or Eastman.

---

### Price List

No. 6 Weno Hawk-Eye, not loaded,	-	-	-	-	\$8.00
*Blair Non-Curling Cartridge Film, 6 exposures, $3\frac{3}{4} \times 5\frac{1}{2}$ ,	-	-	-	-	.40
*Blair Non-Curling Cartridge Film, 10 exposures, $3\frac{3}{4} \times 5\frac{1}{2}$ ,	-	-	-	-	.70
Weno Hawk-Eye Portrait Attachment,	-	-	-	-	.50
Black Sole Leather Carrying Case, with shoulder strap,	-	-	-	-	1.50

\* Specify 3-B Quick Focus Film.

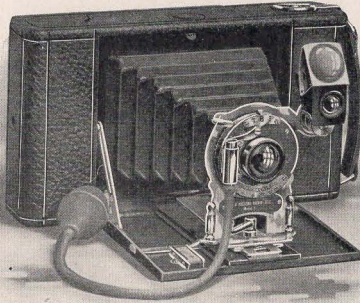
---

---

## No. 3 Folding Hawk-Eye

Model 3

---



Dimensions,  $1\frac{1}{8} \times 4\frac{5}{8} \times 8$  inches. Weight, 25 ounces.  
Size of Photo,  $3\frac{1}{4} \times 4\frac{1}{4}$  inches. Capacity, 12 exposures.

**T**HE No. 3 Folding Hawk-Eye, Model 3, is a perfectly appointed pocket camera, extremely compact and convenient, possessing all the modern ideas in camera construction.

The shutter illustrated and described on page 6 is strictly automatic and fitted with an Iris diaphragm. The lens is rapid rectilinear with 5-inch equivalent focus, having great depth and covering power.

This instrument is also furnished with a single Achromatic Meniscus Lens which requires no judgment as to distance; all objects 8 feet or over being in sharp focus. The camera has a brilliant reversible finder with hood and two tripod sockets; is made of aluminum covered with black seal grain leather. The No. 3 Folding Hawk-Eye is light, strong and dainty. It uses No. 3 F. P. K., Blair or Eastman Film.

---

### Price List

No. 3 Folding Hawk-Eye, Model 3, R. R. lens, not loaded,	-	-	\$15.00
No. 3 Folding Hawk-Eye, Model 3, single lens, not loaded,	-	-	13.50
Blair Non-Curling Cartridge Film, 6 exposures, $3\frac{1}{4} \times 4\frac{1}{4}$ ,	-	-	.35
Blair Non-Curling Cartridge Film, 12 exposures, $3\frac{1}{4} \times 4\frac{1}{4}$ ,	-	-	.70
Hawk-Eye Portrait Attachment,	-	-	.50
Glass Plate Attachment (only),	-	-	3.50
Single Holder, $3\frac{1}{4} \times 4\frac{1}{4}$ inches,	-	-	.50
Black Sole Leather Carrying Case, with shoulder strap,	-	-	1.25

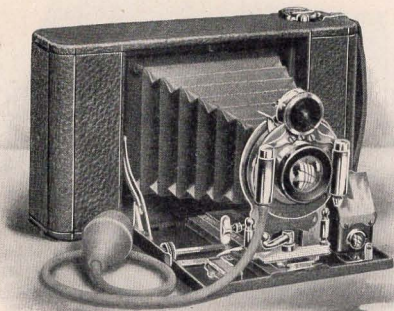
---

---

## No. 3 Folding Hawk-Eye

Model 4

---



Dimensions,  $1\frac{1}{8} \times 4\frac{3}{8} \times 8$  inches.

Weight, 25 ounces.

Size of Photo,  $3\frac{1}{4} \times 4\frac{1}{4}$  inches.

Capacity, 12 exposures.

**T**HE No. 3 Folding Hawk-Eye, Model 4, is designed for those who desire an outfit for a wider range of work than can be accomplished successfully with the Model No. 3. This camera is equipped with a  $5\frac{1}{2}$ -inch equivalent focus rapid rectilinear lens, working at a speed of f-8, fitted to the latest improved B. & L. automatic shutter, accurately graduated with variable speeds from  $\frac{1}{100}$  to one second, fully illustrated and described on page 5. It is fitted with rack and pinion, rising and falling front, brilliant reversible hooded finder and sockets for attaching to tripod.

The No. 3 Folding Hawk-Eye, Model 4, uses No. 3 F. P. K., Blair or Kodak Film. It is made of aluminum; it is light and strong and covered with black seal grain leather; it is pleasing in appearance, perfect in construction and excellent in results.

---

### Price List

No. 3 Folding Hawk-Eye, Model 4, not loaded,	- - -	\$22 00
No. 3, with Kodak Automatic Shutter and R. R. Lens, not loaded,	- - -	22.00
No. 3, fitted with No. 1 Plastigmat Lens,	- - -	51.95
No. 3, fitted with Series II-B, No. 4 Tessar lens,	- - -	51.45
No. 3, fitted with Series VII-A, No. 4 Zeiss lens,	- - -	75.95
Blair Non-Curling Cartridge Film, 6 exposures, $3\frac{1}{4} \times 4\frac{1}{4}$ ,	- - -	.35
Blair Non-Curling Cartridge Film, 12 exposures, $3\frac{1}{4} \times 4\frac{1}{4}$ ,	- - -	.70
Hawk-Eye Portrait Attachment,	- - -	.50
Black Sole Leather Carrying Case, with shoulder strap,	- - -	1.25
Glass Plate Attachment (only),	- - -	3.50
Single Glass Plate Holder,	- - -	.50

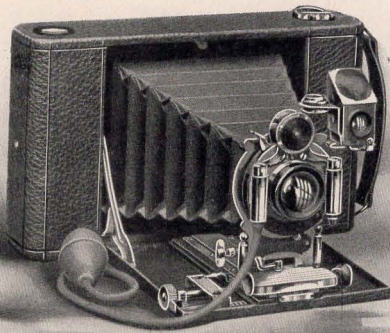
---

---

# No. 4 Folding Hawk-Eye

Model 3

---



Dimensions, 2 x 5½ x 9⅞ inches. Weight, 30 ounces.  
Size of Photo, 4 x 5 inches. Capacity, 12 exposures.

**T**HE No. 4 Folding Hawk-Eye, Model 3, is complete in every detail, lacking nothing the user could wish for on a hand camera. Fitted with the highest grade of rapid rectilinear lens and Bausch & Lomb latest improved automatic shutter, illustrated and described on page 5. It has an automatic standard clamp, rising and falling and sliding front, and rack and pinion for focusing. Brilliant reversible hooded finder with level attached, also sockets for attaching to tripod in either vertical or horizontal position. The No. 4 Folding Hawk-Eye, Model 3, is light, compact and strong, made of aluminum and covered with the best grade of black seal grain leather, it is handsome and efficient. This Hawk-Eye uses No. 4 Screen Focus Blair or Kodak Film.

---

## Price List

No. 4 Folding Hawk-Eye, Model 3, R. R. Lens, not loaded,	-	-	\$27.50
No. 4, Model 3, with Kodak Automatic Shutter, R. R. Lens, not loaded,	-	-	27.50
No. 4, Model 3, S. V. Shutter, R. R. lens, not loaded,	-	-	22.00
No. 4, Model 3, Achromatic Lens, S. V. Shutter, not loaded,	-	-	20.00
No. 4, Model 3, Series II-B, No. 5 Tessar Lens,	-	-	62.70
No. 4, Model 3, with Series VII-A, No. 4 Zeiss Lens,	-	-	80.70
No. 4 Folding Hawk-Eye, Model 3, No. 2 Plastigmat,	-	-	62.70
*Blair Non Curling Cartridge Film, 6 exposures, 4 x 5,	-	-	.45
*Blair Non Curling Cartridge Film, 12 exposures, 4 x 5,	-	-	.90
Black Sole Leather Carrying Case, with shoulder strap,	-	-	1.50
Hawk-Eye Portrait Attachment,	-	-	.50
Glass Plate Attachment (only),	-	-	3.50
Single Glass Plate Holder,	-	-	.75

\* In ordering Film specify Screen Focus.

---

## No. 3-B Folding Hawk-Eye

Model 1

---



Dimensions,  $2 \times 4\frac{3}{4} \times 9\frac{5}{8}$  inches.  
Size of Photo,  $3\frac{1}{4} \times 5\frac{1}{2}$  inches.

Weight, 33 ounces.  
Capacity, 10 exposures.

**T**HE No. 3-B Folding Hawk-Eye is the highest attainment of what may be classed pocket camera construction, folding in such compact form that it may readily be carried in a top coat pocket. It has all the features and adjustments found on cameras of three times its bulk, and these coupled with its capacity of ten exposures  $3\frac{1}{4} \times 5\frac{1}{2}$ , commend it to the most advanced amateur. Like all Folding Hawk-Eyes, the No. 3-B opens horizontally, as most pictures are taken with the camera in this position.

A desirable feature embodied in the equipment of the No. 3-B is the rack and pinion for focusing, also the sliding front which is useful when photographing tall buildings or similar objects. The lenses furnished with the regular equipment are the highest grade of rectilinear type, and each one is carefully tested to insure uniformity. They have a focal length of  $6\frac{1}{2}$  inches, which length overcomes all distortion, produces correct perspective, and works at a speed of f-8.

The No. 3-B Folding Hawk-Eye, Model 1, is fitted with the single valve automatic shutter illustrated and described on page 6. The Model 2 is equipped with the No. 1 Bausch & Lomb automatic shutter, having variable speeds ranging from 1 second to  $\frac{1}{100}$  of a second, also time and bulb exposure.

---



---

# No. 3-B Folding Hawk-Eye

Model 2

---



**W**ITH this shutter the camera is capable of a wide range of work. It is constructed so as to admit of adapting anastigmat lenses, and when so equipped makes the highest possible grade of instrument which can be produced. Both models have a reversible brilliant hooded finder with spirit level, and sockets for attaching to a tripod in either horizontal or vertical position. The No. 3-B Folding Hawk-Eye is made of aluminum; it is strong, compact, durable and handsomely finished with seal grain leather covering and nickel trimmings. It uses daylight loading, No. 3-B Quick Focus Blair or Eastman Film cartridges.

---

## Price List

No. 3-B Folding Hawk-Eye, Model 1, with R. R. Lens and Single Valve Automatic Shutter, not loaded, - - - - -	\$20.00
No. 3-B Folding Hawk-Eye, Model 2, with R. R. Lens and No. 1 B. & L. Automatic Shutter, not loaded, - - - - -	27.50
No. 3-B, Model 2, Kodak Automatic Shutter, R. R. Lens, not loaded, - - - - -	27.50
No. 3-B, Model 2, with No. 2 Plastigmat Lens, - - - - -	62.70
No. 3 B, Model 2, with No. 5 Series 11-B Tessar Lens, - - - - -	62.70
No. 3-B, Model 2, with Series VII-A, No. 4 Zeiss, - - - - -	80.70
*Blair Non-Curling Cartridge Film, 3¼ x 5½, 6 exposures, - - - - -	.40
*Blair Non-Curling Cartridge Film, 3¼ x 5½, 10 exposures, - - - - -	.70
Black Sole Leather Carrying Case, - - - - -	1.50
Hawk-Eye Portrait Attachment, - - - - -	.50
Glass Plate Attachment (only), - - - - -	3.50
Double Glass Plate Holder, - - - - -	1.25

\* Specify No. 3-B Quick Focus Film.



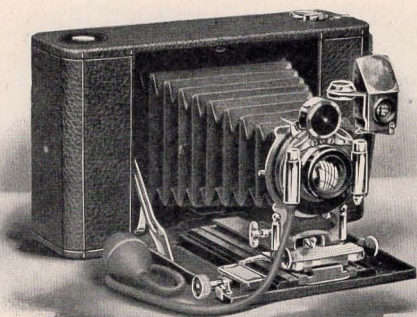
---

---

# No. 4 Folding Hawk-Eye

Model 4

---



Dimensions,  $2\frac{3}{4} \times 5\frac{1}{2} \times 9\frac{1}{8}$  inches.  
Size of Photo, 4 x 5 inches.

Weight, 45 ounces.  
Capacity, 12 exposures.

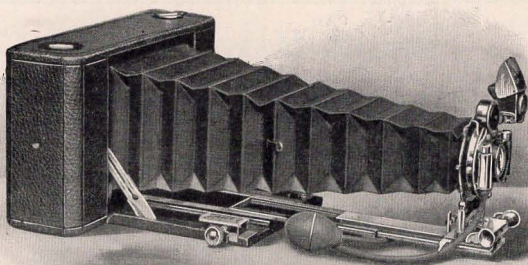
**T**HE No. 4 Folding Hawk-Eye, Model 4, while designed for wide range of work, still has the simplicity embodied in all Hawk-Eyes. Compactness combined with the completeness of its equipment puts it in a class by itself. The regular optical equipment is a Bausch & Lomb rapid symmetrical lens, working at a speed of f-8. This, coupled with the improved B. & L. Automatic Shutter, illustrated and described on page 5, enables the user to make pictures under conditions which are not favorable to photography, as the lens will cover sharp to the corners with the diaphragm 4. The bellows draw of  $13\frac{3}{4}$  inches admits the use of the back

---

## Price List

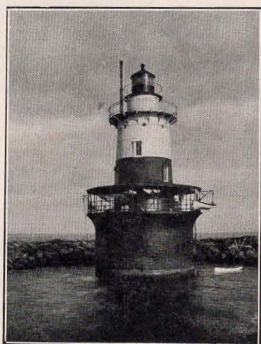
No. 4 Folding Hawk-Eye, Model 4, not loaded,	-	-	-	\$30.00
No. 4 Folding Hawk-Eye, Model 4, No. 2 Plagmat Lens,	-	-	-	64.35
No. 4, Model 4, Series VII-A, No. 7 Zeiss Lens,	-	-	-	92.85
*Blair Non-Curling Cartridge Film, 6 exposures, 4 x 5,	-	-	-	.45
*Blair Non-Curling Cartridge Film, 12 exposures, 4 x 5,	-	-	-	.90
Black Sole Leather Carrying Case, with shoulder strap,	-	-	-	1.75
Hawk-Eye Portrait Attachment,	-	-	-	.50
Glass Plate Attachment (only),	-	-	-	3.50
Single Glass Plate Holder,	-	-	-	.75

\* In ordering films specify Screen Focus.



combination of the lens, a great advantage in making distant views, as often an object is so far away that the effect when made with a doublet is too small to be of any use. By using the back combination of the lens the subject in the picture will be twice the size of the same subject at the same distance made with a doublet.

The No. 4 Folding Hawk-Eye, Model 4, has an automatic standard clamp, rising and falling and sliding front, and rack and pinion for focusing. The bellows being  $13\frac{3}{4}$  inches long makes the camera efficient as a copying and enlarging outfit, when used with the glass plate attachment. Brilliant reversible hooded finder with level attached, and sockets for attaching to tripod in either position, are embodied in the equipment. The No. 4 Folding Hawk-Eye, Model 4, is made of aluminum; it is strong; it is very compact considering its efficiency, and is handsomely finished with full nickel trimmings and black seal grain leather covering. It uses No. 4 Screen Focus Blair or Kodak Film.



Made with Doublet—Distance,  
1500 feet.



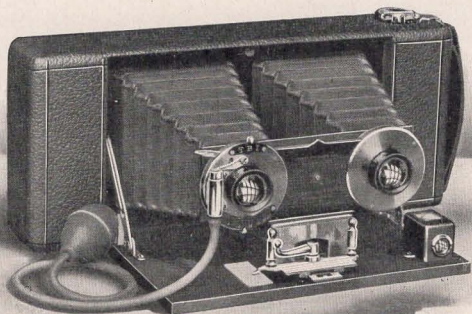
Made with Back Combination—  
Distance, 1500 feet.

---

# Stereo Hawk-Eye

Model 3

---



Dimensions,  $1\frac{1}{8} \times 4\frac{3}{8} \times 10\frac{1}{4}$  inches. Weight, 28 ounces.  
Size of Photo, Standard Stereo. Capacity, 6 exposures.

**I**N the branch of photography for which this Hawk-Eye is designed, realistic observation is produced by the use of two lenses making two pictures at the same time, which, when produced and viewed through a stereoscope, produce actual visual effects, thus giving the same impression as when looking at the things themselves. Stereo Hawk-Eyes are made in two models.

The Model 3 is fitted with Bausch & Lomb single valve Stereo automatic shutter, having Iris diaphragm, and the lenses are double matched rapid rectilinear, thus producing the same perspective, density and detail in each negative. The Model 4 is equipped with Bausch & Lomb No. 1 Stereo automatic shutter, having variable speeds, accurately graduated from  $\frac{1}{100}$  to one second. The lenses are perfectly matched rapid rectilinear, working at a speed of f-8 and having focal length of 5 inches.

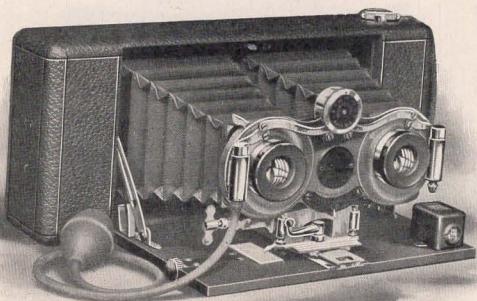
---

---

# Stereo Hawk-Eye

Model 4

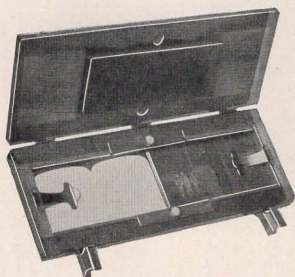
---



Dimensions,  $1\frac{1}{8} \times 4\frac{3}{8} \times 10\frac{1}{4}$  inches. Weight, 28 ounces.  
Size of Photo, Standard Stereo. Capacity, 6 exposures.

**S**TEREO Hawk-Eyes use No. 2 Bulls-Eye, Blair or Kodak film and make negative of correct Stereo size. They are handsomely finished with seal grain leather covering and full nickel trimmings.

## Stereo Hawk-Eye Self Transporting Printing Frame



To simplify making Stereo prints we furnish a Self Transporting Printing Frame as illustrated above. With its use Stereo pictures can be made as easily as the ordinary kind. Price, \$1.50.

---

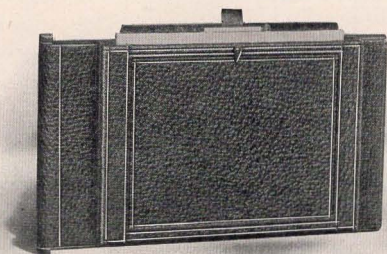
### Price List

Stereo Hawk-Eye, Model 3, not loaded,	-	-	-	-	\$25.00
Stereo Hawk-Eye, Model 4, not loaded,	-	-	-	-	35.00
Stereo, Model 4, fitted with No. 1 Plastigmat Lenses,	-	-	-	-	95.50
Stereo, Model 4, fitted with Series II-B, No. 4 Tessar Lenses,	-	-	-	-	95.50
Blair Non Curling Cartridge Film, 3 exposures, for Stereo $3\frac{1}{2} \times 3\frac{1}{2}$ ,	-	-	-	-	.30
Blair Non-Curling Cartridge Film, 6 exposures, for Stereo $3\frac{1}{2} \times 3\frac{1}{2}$ ,	-	-	-	-	.60
Stereo Hawk-Eye Self Transporting Printing Frame,	-	-	-	-	1.50
Black Sole Leather Carrying Case,	-	-	-	-	1.50
Glass Plate Attachment (only),	-	-	-	-	3.50
Single Glass Plate Holder,	-	-	-	-	1.00

---

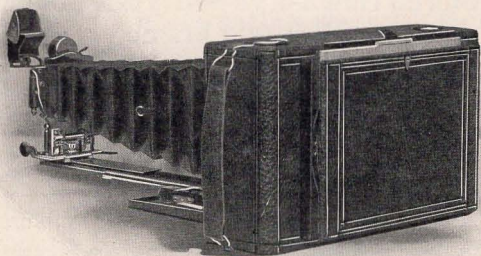
## Plate Attachment

---



**B**Y the use of the Plate Adapter, which fits interchangeably with the back cover, Folding Hawk-Eyes may be converted into efficient plate cameras.

These attachments are fitted with spring actuating ground glass. The Plate Adapters are made to fit No. 3 Folding Hawk-Eyes, Models 3 and 4, No. 4 Folding Hawk-Eyes, Models 3 and 4, 3-B Folding Hawk-Eye, Models 1 and 2, and Stereo Hawk-Eyes, Models 1, 2, 3 and 4.



**Folding Hawk-Eye, Showing Bed Extended ;  
Fitted with Plate Attachment**

---

### Price List

Plate Attachment only, for No. 3 Folding Hawk-Eyes, Models 3 and 4,	\$3.50
Plate Attachment only, for No. 4 Folding Hawk-Eyes, Models 3 and 4,	3.50
Plate Holder Attachment, only, for 3-B Folding Hawk-Eye, Models 1 and 2,	3.50
Single Plate Holder, $3\frac{1}{4} \times 4\frac{1}{4}$ ,	.50
Single Plate Holder, $4 \times 5$ ,	.75
Double Plate Holder, $3\frac{1}{4} \times 5\frac{1}{2}$ ,	1.25
Plate Attachment only, for Stereo Hawk-Eyes, Models 1, 2, 3 and 4,	3.50
Plate Holders for Stereo Hawk-Eyes,	1.00

# Hawk-Eyes Fitted with Lenses of the Highest Grade

(The prices given in this table are net.)

STYLE CAMERA	B. & L. Automatic Shutter and Plastigmat Lens	B. & L. Automatic Shutter and Series VII-A Zeiss Lens
<b>Folding Hawk-Eye</b>		
No. 3, Model No. 4.....	No. 1 Lens, \$51.95	No. 4 Lens, \$75.95
No. 3-B, Model No. 2.....	No. 2 Lens, 62.70	No. 4 Lens, 80.70
No. 4, Model No. 3.....	No. 2 Lens, 62.70	No. 4 Lens, 80.70
No. 4, Model No. 4.....	No. 2 Lens, 64.35	No. 7 Lens, 92.35

STYLE CAMERA	B. & L. Automatic Shutter and Ser. III Cooke Lens	B. & L. Automatic Shutter and Series II-B Tessar Lens
<b>Folding Hawk-Eye</b>		
No. 3, Model No. 4.....	No. 3 Lens, \$52.95	No. 4 Lens, \$51.45
No. 3-B, Model No. 2.....	No. 4 Lens, 62.20	No. 5 Lens, 62.70
No. 4, Model No. 3.....	No. 4 Lens, 62.20	No. 5 Lens, 62.70

STYLE CAMERA	Volute Shutter and Series II-B Tessar Lens	Volute Shutter and Plastigmat Lens
<b>Folding Hawk-Eye</b>		
No. 3-B, Model No. 2.....	No. 5 Lens, \$77.00	No. 2 Lens, \$77.00
No. 4, Model No. 3.....	No. 5 Lens, 77.00	No. 2 Lens, 77.00
No. 4, Model No. 4.....		No. 2 Lens, 78.65

STYLE CAMERA	Volute Shutter and Series VII-A Zeiss Lens	Volute Shutter and Series III Cooke Lens
<b>Folding Hawk-Eye</b>		
No. 3-B, Model No. 2.....	No. 4 Lens, \$95.00	No. 4 Lens, \$76.50
No. 4, Model No. 3.....	No. 4 Lens, 95.00	No. 4 Lens, 76.50
No. 4, Model No. 4.....	No. 7 Lens, 106.65	

Stereo Hawk-Eye, B. & L. Stereo Shutter and No. 1 Plastigmat Lenses . . . \$ 95.50  
 Stereo Hawk-Eye, B. & L. Stereo Shutter and Ser. II-B, No. 4 Tessar Lenses 95.50  
 Stereo Hawk-Eye, B. & L. Stereo Shutter and Ser. III, No. 3 Cooke Lenses 100.00

---

---

# Tripods

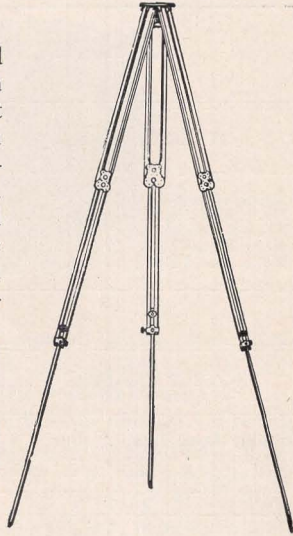
---

## Hawk-Eye Tripod

**T**HIS tripod is three-fold and very compact. In its manufacture nothing but the best selected straight grain spruce is used, and all trimmings are of lacquered brass. A special feature is the metal head, which is made in one piece, which does away with brazing and avoids all possibility of being easily broken. The length when extended is 56 inches; when folded, 21 inches; weight, 20 ounces.

We recommend this tripod for use with any camera up to and including 5 x 7 in size.

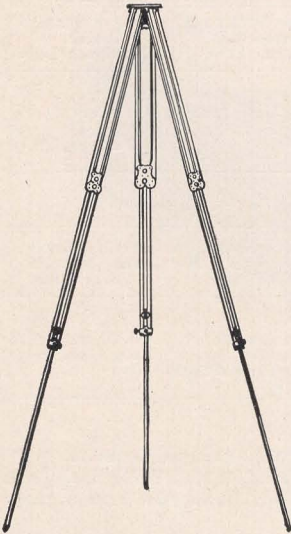
Price, \$1.60



## Special Hawk-Eye Tripod

**T**HE wood parts of this tripod are of maple. Furnished in natural finish. In construction it is similar and in dimensions the same as the Hawk-Eye tripod described above. Furnished with metal or wood head as desired. This tripod is very rigid, and the beautiful finish makes it very desirable for use with high-grade outfits. Weight, 30 ounces.

Price, \$1.70



---



---

# Tripods and Trays

---

## Special Hawk-Eye Tripod

Ebony Finish

**T**HIS tripod is made of maple, finished dead-black to represent ebony. The trimmings being nickel produce a contrast which is very handsome. Weight, 30 ounces.

Price, \$2.00

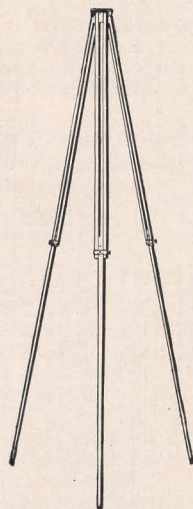
## Weno Tripod

**T**HIS tripod is designed for use with small cameras. The top is attached to the legs in such a manner that it is not necessary to remove when folding, which is an advantage, as the tripod is always ready for use.

The wood used is straight grain spruce, with shellac finish, the trimmings of lacquered brass.

The weight complete, with head and screw, is but 17 ounces.

The length when extended can be made to vary from 34 to 54 inches. The length when folded is but 29½ inches.



Price, \$ .90

## Hawk-Eye Developing Trays

These trays are light in weight, tough and strong, and are not affected by the action of chemicals; are easily kept clean, have ridges on the bottom, and we recommend them for amateurs' use.

3½ x 4½, - \$ .10      4½ x 5½, - \$ .12      5½ x 8½, - \$ .30

## Polished Rubber Trays

The indentations permit the finger to be inserted freely under the plate without any danger of scratching.

4 x 5, - - - - - \$ .35      6½ x 8½, - - - - - \$ .83  
 5 x 8, - - - - - .65      8 x 10, - - - - - 1.25



## Hard Rubber Developing Trays

Of the best quality of hard rubber, with bound corners and a lip for pouring. They are a superior article.

4	x 5	.....\$ .55	8 x 10	.....\$1.25
5	x 8	..... .80	10 x 12	..... 1.85
6½	x 8½	..... .95		

## Film

### Perforated Daylight Loading Film

	6 ex.	12 ex.
2 x 2½ for Baby Hawk-Eye.....	\$	\$ .40
3½ x 3½ for No. 2 Weno, or Hawk-Eye, Jr.....	.30	.60
3¼ x 4¼ for No. 3 Folding, No. 3 Focusing Hawk-Eye or No. 3 Combination Hawk-Eye... ..	.35	.70
4 x 5 for No. 4 Weno, No. 4 Folding, No. 4 Focusing, 4 x 5 Hawk-Eye, Jr., or Tourist Hawk-Eye....	.45	.90

In ordering film always state the style of Hawk-Eye for which it is intended. All Perforated Film is especially prepared for use in the Kodak daylight developing machine.

### Blair Non-Curling Cartridge Film

	6 ex.	12 ex.
1½ x 2 for Pocket Kodak.....	\$	\$ .25
2¼ x 2¼ for No. 1 Brownie.....	.15	
2¼ x 3¼ for No. 2 Brownie.....	.20	
3¼ x 4¼ for No. 3 Brownie.....	.35	.70
1⅝ x 2½ for No. 0 Folding Pocket Kodak.....	.15	.25
2¼ x 3¼ for No. 1 Folding Pocket Kodak.....	.20	.40
2½ x 4¼ for No. 1-A Folding Pocket Kodak.....	.25	.50
*3¼ x 4¼ for No. 3 Weno Hawk-Eye, Stereo Hawk-Eye, Model Nos. 1 and 2, No. 3 Combination Hawk-Eye or No. 3 Focusing Hawk-Eye, No. 3 Folding Hawk-Eye, Kodak or Buck-Eye.....	.35	.70
*3½ x 3½ for Hawk-Eye, Bulls Eye, Bullet or Buck-Eye.....	.30	.60
4 x 5 for Hawk-Eye, Bulls-Eye, Bullet or Buck-Eye... ..	.45	.90
4 x 5 for No. 4 Screen Focus Kodak, No. 4 Folding Hawk-Eye, Models Nos. 3 and 4.....	.45	.90
4¼ x 3¼ for No. 3 Cartridge Kodak.....	.35	.70
5 x 4 for No. 4 Cartridge Kodak.....	.45	.90
7 x 5 for No. 5 Cartridge Kodak.....	.80	
3¼ x 5½ for No. 3-A Folding Pocket Kodak, 6 ex. 40c.; 10 ex. 70c.		
3¼ x 5½ for No. 3-B Folding Hawk-Eye, No. 6 Weno Hawk-Eye, Stereo Brownie and No. 3-B Quick Focus Kodak, 6 ex. 40c.; 10 ex. 70c.		

\*Note.—3¼ x 4¼ and 3½ x 3½—6 exposure lengths supplied on regular size spools. Small flange spool supplied when specified.

NOTE.—When ordering film state whether you desire the Blair Non Curling (numbers on back) or Perforated.

## Carrying Cases

Made of Black Sole Leather, including shoulder strap, and first-class in every way.

No. 2 Weno Hawk-Eye.....	\$1.25
No. 3 Weno Hawk-Eye.....	1.50
No. 4 Weno Hawk-Eye.....	1.50
No. 5 Weno Hawk-Eye.....	1.50
No. 6 Weno Hawk-Eye.....	1.50
No. 3 Folding Hawk-Eye, Models Nos. 1 and 2.....	1.25
No. 3 Folding Hawk-Eye, Models Nos. 3 and 4.....	1.25
No. 3-B Folding Hawk-Eye, Models Nos. 1 and 2.....	1.50
No. 4 Folding Hawk-Eye, Models Nos. 1 and 2.....	1.50
No. 4 Folding Hawk-Eye, Model No. 3.....	1.50
No. 4 Folding Hawk-Eye, Model No. 4.....	1.75
Stereo Hawk-Eye, Models Nos. 1 and 2.....	1.50
Stereo Hawk-Eye, Models Nos. 3 and 4.....	1.50

## Azo

An ideal amateur paper. Prints and develops quickly by artificial light.

3½ x 3½.....	2 dozen \$ .20, gross \$ .90
4 x 5.....	2 " .25, " 1.00
5 x 7.....	" .20, " 1.75
5 x 8.....	" .25, " 2.00

## Kloro Printing-Out Paper

Brilliant high lights, silky half-tones, rich, transparent shadows.

3½ x 3½.....	2 dozen \$ .20, gross \$1.15
3¼ x 4¼.....	2 " .20, " 1.15
4 x 5.....	2 " .25, " 1.25
5 x 7.....	1 " .30, " 2.65

Quotations for other sizes on application.

## Blue Print Paper

Quickly printed and easily handled. This paper possesses peculiar and characteristic properties found in no other brand.

3½ x 3½.....	2 dozen sheets, per package, \$ .16
3¼ x 4¼.....	2 " " " " .16
4 x 5.....	2 " " " " .20
5 x 7.....	2 " " " " .35

## Glass Dry Plates

Very rapid for instantaneous work.

3¼ x 3¼.....	\$ .35
3½ x 3½.....	.35
3¼ x 4¼.....	.45
4 x 5.....	.65
5 x 7.....	1.10

## Hub Developing Powders

These powders are carefully compounded, and those using them can feel assured of obtaining the best of results. We recommend them for the development of our film. Each package will make four ounces.

Price, per dozen.....	\$ .50
-----------------------	--------

## Toning Solution

Concentrated

12-ounce bottle.....\$ .50

## Hardener

12-ounce bottle.....\$ .50

## Azo Developing Powders

6 powders, sufficient for 24 ounces.....\$ .25  
 12 " " " " 48 " .....\$ .50

## Hawk-Eye Print Roller

Fitted with double rollers of the best rubber and very durable.

6-inch.....\$ .50

## Hawk-Eye Albums

These Albums are the loose leaf, lace system, with plain gray leaves, and are of the latest design. The covers are of cloth in a delicate gray tint. These Albums are intended for use as permanent books for preserving prints of interest.

No. 1, size of leaf, 5 x 6½ inches; capacity, 40, 4 x 5, 3¼ x 4¼, or 3½ x 3½ prints.....\$1.00

No. 2, size of leaf, 9¼ x 6½ inches; capacity, 80, 4 x 5, 3¼ x 4¼, or 3½ x 3½ prints.....1.25

## Ferrotypes Plates

Of the best quality that can be made, heavily coated, especially adapted for burnishing prints.

Size, 10 x 14 inches.....\$ .15

## Plate Holders

In ordering plate holders it is always best to mention the camera in which they are to be used, so as to avoid the possibility of delay or error. All holders are made of selected cherry, and the slides can be furnished either of waterproof cardboard or hard rubber.

SIZE	With Board Slides	With Rubber Slides	SIZE	With Board Slides	With Rubber Slides
3¼ x 3¼	\$ .80	\$1.00	6½ x 8½	\$2.00	\$2.50
3¼ x 4¼	Single	.50	8 x 10	2.35	2.95
3¼ x 6½	Stereo	1.00	.....	.....	.....
4 x 5	Single	.75	.....	.....	.....
4 x 5	\$1.00	1.20	.....	.....	.....
5 x 7	1.50	1.80	.....	.....	.....

## Slides for Holders

SIZE	BOARD	Polished Hard Rubber	SIZE	BOARD	Polished Hard Rubber
3¼ x 3¼	\$ .10	\$ .20	6½ x 8½	\$ .25	\$ .50
3¼ x 4¼	.10	.20	8 x 10	.35	.65
3¼ x 6½	.15	.25	10 x 12	.45	.90
4 x 5	.15	.25	11 x 14	.50	1.00
5 x 7	.20	.35	.....	.....	.....

## Card Mounts

We do not carry a complete assortment of card stock, selecting only what we think most desirable for the amateur's use.

2	x 2½, embossed.....	per dozen, \$ .10	per 100, \$ .45
3½	x 3½, " .....	" " .15	" " .75
3¼	x 4¼, " .....	" " .15	" " .75
3¼	x 5½, " .....	" " .25	" " 1.25
4	x 5, " .....	" " .20	" " 1.20
Stereo.....	" .....	" " .20	" " 1.00

## Printing Frames

(Heavy Weight)

4¼ x 5½.....	\$ .40	10 x 12.....	\$1.00
5 x 8 .....	.52	11 x 14.....	1.80
Stereo .....	1.50		

## Special Printing Frames

(Extra Light Weight)

3¼ x 3¼.....	\$ .25	3½ x 3½.....	\$ .25
--------------	--------	--------------	--------

## Developing and Printing

SIZE	Developing, Printing, and Mounting— 12 exposures	Developing Only	Printing and Mounting	Developing Printing and Mounting
2 x 2½	\$ .80	\$ .03	\$ .04	\$ .07
3½ x 3½	1.50	.06	.08	.12½
3¼ x 4¼	1.50	.06	.08	.12½
3¼ x 5½	1.80	.08	.10	.15
4 x 5	1.80	.08	.10	.15
5 x 7	2.40	.08	.12½	.20

## Outfits for Developing and Printing

To save time and trouble in selecting the articles needed for developing and printing, we furnish outfits including everything necessary at far below the cost if furnished separately.

### 3½ x 3½ FOR FILM OR PLATES

1 Candle Lamp.....	\$ .25	1 dozen Sheets Printing	
4 Developing Trays.....	.40	Paper .....	\$ .15
1 Glass Beaker.....	.12	1 Bottle Toning Solution.	.10
1 3½x 3½ Printing Frame	.25	1 Pkg. Bromide of Potas-	
1 3½ x 3½ Glass.....	.05	sium .....	.10
1 Stirring Rod .....	.05	Directions .....	.10
¼ doz. Devel. Powders..	.15		
¼ lb. Hyposulphite Soda.	.04		\$1.76

Price, complete, \$1.00

### 4 x 5 FOR FILM OR PLATES

1 Candle Lamp.....	\$ .25	½ pound Hyposulphite	
1 4 x 5 Printing Frame..	.25	of Soda.....	\$ .07
1 4 x 5 Glass.....	.05	½ oz. Bromide Potassium	.10
1 Glass Beaker.....	.12	2 doz. 4 x 5 Printing Paper	.25
2 Stirring Rods.....	.05	2 ozs. Toning Solution...	.15
4 4 x 5 Developing Trays	.40	Directions .....	.10
½ doz. Devel. Powders..	.25		

\$2.04

Price, complete, \$1.50

---

---

## Terms

---

The prices given are net except to dealers.

Remittances should be made by draft on New York, express order, postal order, or registered mail. Amounts less than one dollar may be remitted in stamps. We do not accept personal checks.

Parties unknown to us desiring shipment C. O. D. must remit one-third the estimated amount of invoice with the order.

Small parcels which do not contain glass in any form can be sent by mail at risk of the purchaser. We do not pay postage—remit when ordering.

All our goods are packed carefully, and we cannot be held responsible for any damage after the package leaves our hands.

No charge is made for packing, and prices are f. o. b. Rochester.

**BLAIR CAMERA CO.,**  
**Rochester, N. Y., U. S. A.**

BLAIR CAMERA CO.  
ROCHESTER, N. Y.



ROBT. DEMPSTER CO.  
Omaha, Nebraska