

*A professional quality head for
16mm cameras weighing up to 20 lbs.*

The smooth-flowing action of larger motion picture cameras can be achieved with small 16mm cameras using the O'Connor Model C Fluid camera Head. Designed for the advanced amateur who demands perfection and the professional for field use where light weight equipment is used.

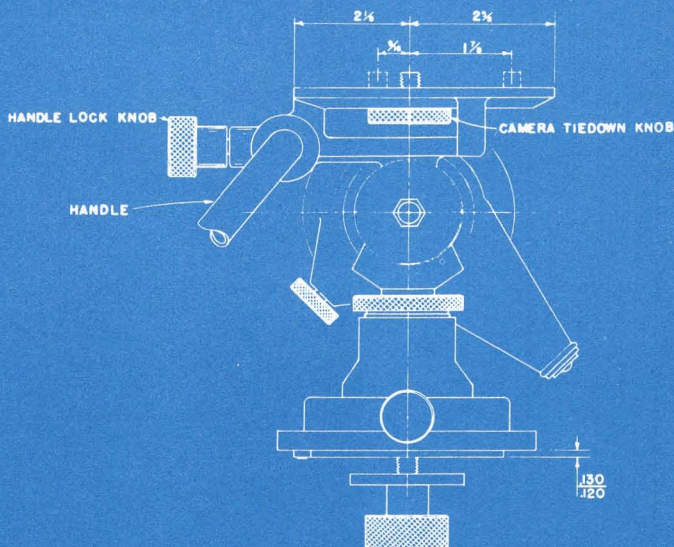
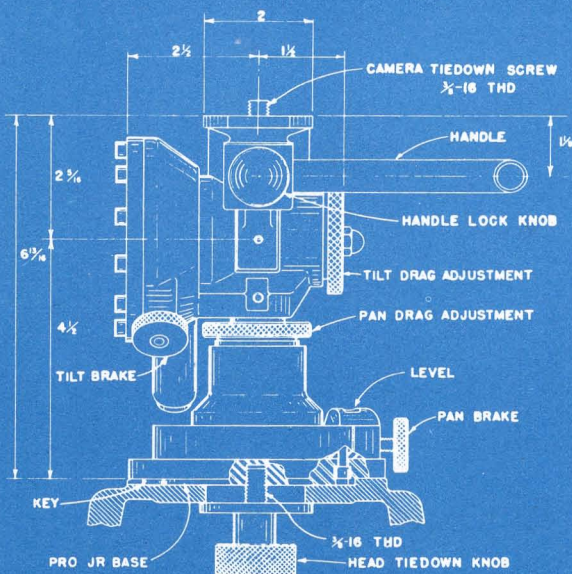
Employing the same principles as larger O'Connor Fluid Heads, the Model C provides super-smooth panning and tilting with the camera under perfect control at all times. An infinitely variable fluid drag adjustment makes it possible to apply the proper amount of drag to prevent sudden starts, stops and jerking.

Materials and workmanship of the Model C are the same dependable quality that have made O'Connor Heads the choice of those who settle for nothing but the best.

IMPORTANT FEATURES

- Handles 16mm cameras up to 20 lbs.
- Designed for use with Arriflex, Cine Special, Bell and Howell Magazine, 70 Series Bolex, Kodak, etc.
- Pans 360°. Tilts up 70° and down 90° from horizontal.
- Base is designed to fit Pro Jr. and most amateur tripods.
- Drag adjustment independent for pan and tilt.
- Counterbalanced in tilt to compensate for weight of camera.
- All rotating moving parts are mounted on ball bearings.
- Override feature assures quick return on both pan and tilt.
- Light. Weighs only 6 lbs. Easily transportable.

O'CONNOR MODEL C FLUID HEAD



GUARANTEE

Guaranteed for 1 year against leakage, defective materials or workmanship. The guarantee is null and void if the head has been tampered with. All repairs must be made in the O'Connor shops.

IMPORTANT WHEN ORDERING

Be sure to specify type and weight of camera to be used and type of tripod or high hat. If head is to be used in extreme conditions of salt or sand, specify special finish to be used. Detailed information and sketches should be furnished if special adapters or devices are to be provided. For carrying cases and other optional equipment see accessories sheet.

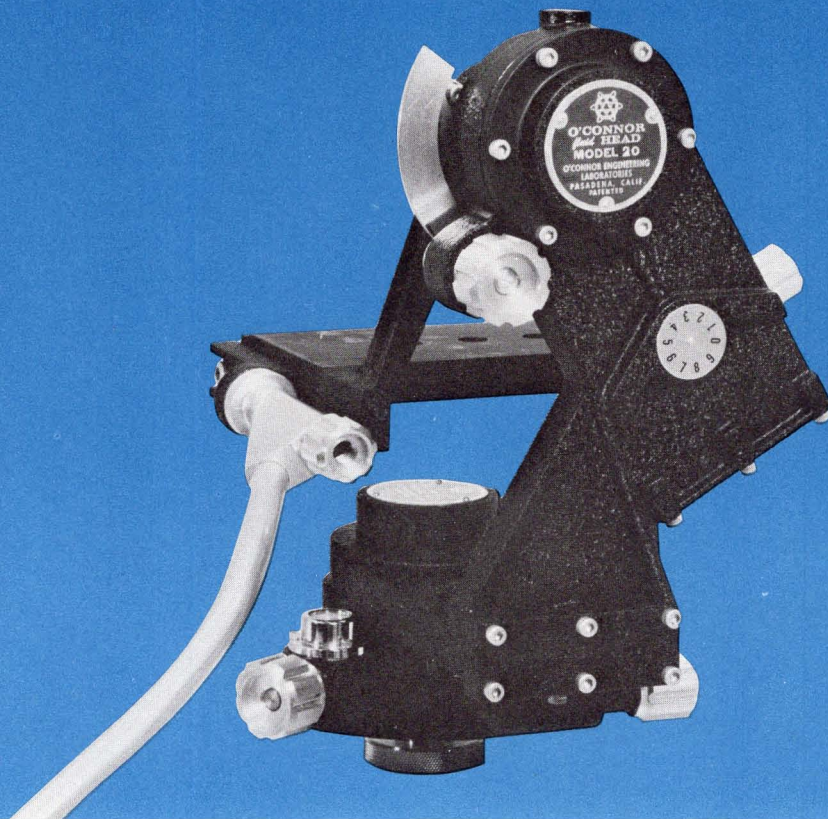
SPECIFICATIONS

Capacity:	20 lbs.
Weight:	6 lbs.
Size (Approx.):	6 3/4" high x 5" wide x 6 1/2" long. (Excluding knobs and handle.)
Operating limits:	Pan, 360° continuous rotation. Tilt, plus 75° to minus 90°.
Base:	Pro Jr. or most amateur type tripods.
Camera mounting screw:	3/8"-16. (1/4"-20 on special order.)
Counterbalance:	60 inch lbs. @ 90° tilt.
Material:	Magnesium and aluminum alloy castings. (External parts anodized or plated.)
Finish:	Black wrinkle enamel.
Temperature range:	20° to 120° F.
Bearings:	Timken pre-loaded roller.
Shipping weight:	7 lbs.



CONNOR ENGINEERING LABORATORIES, INC.

3490 E. Foothill Blvd., Pasadena, Calif. 91107 • Phone (213) 684-0838



*New Springless Head With
Variable, 100 percent Viscous Dampened Torque Control*

This unusual camera head was designed to meet the needs of the latest lightweight professional cameras.

It is unique in that it embodies dynamic and static balancing in all positions.

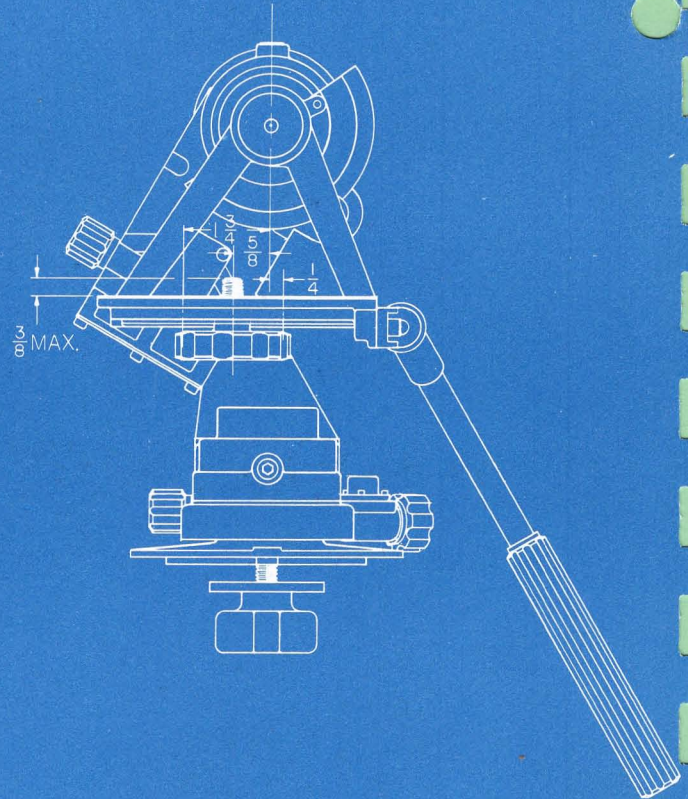
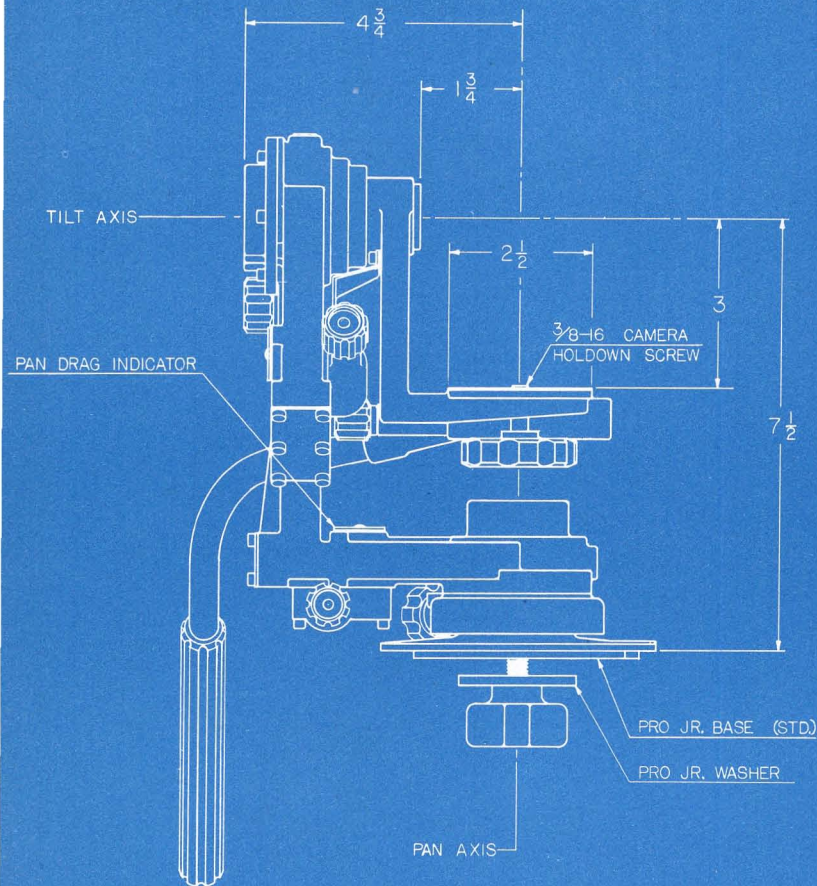
The Model 20 has a completely new fluid action never before used in a head. This action eliminates **ALL** static friction and gives perfect fluid control.

With a rigid head support, such as the O'CONNOR HYDRO-PED, the Model 20 gives a perfect pan, tilt, or any combination of movements with the longest telephoto lens.

NOTEWORTHY FEATURES

- 100% fluid action.
- Repeatable torque control adjustment.
- Torque control infinitely adjustable.
- Imperceptible "sticktion."
- No springs.
- Dynamic balance, not obtainable with spring counterbalancing.
- All rotating components mounted in antifriction Timken bearings.
- Handle adjustable vertically, horizontally and right or left hand.
- 45-minute sensitivity Bull's Eye Level, readily visible from operating position.

O'CONNOR MODEL 20 FLUID HEAD



GUARANTEE

Guaranteed against leakage, defective materials and workmanship for one year. Guarantee null and void if head has been tampered with. All repairs must be made at the factory.

RECOMMENDED TRIPODS

- O'CONNOR HYDRO-PED
- Pro Junior type built to O'CONNOR Specifications.
- Ball type tripods with O'CONNOR Adapters.

SPECIFICATIONS

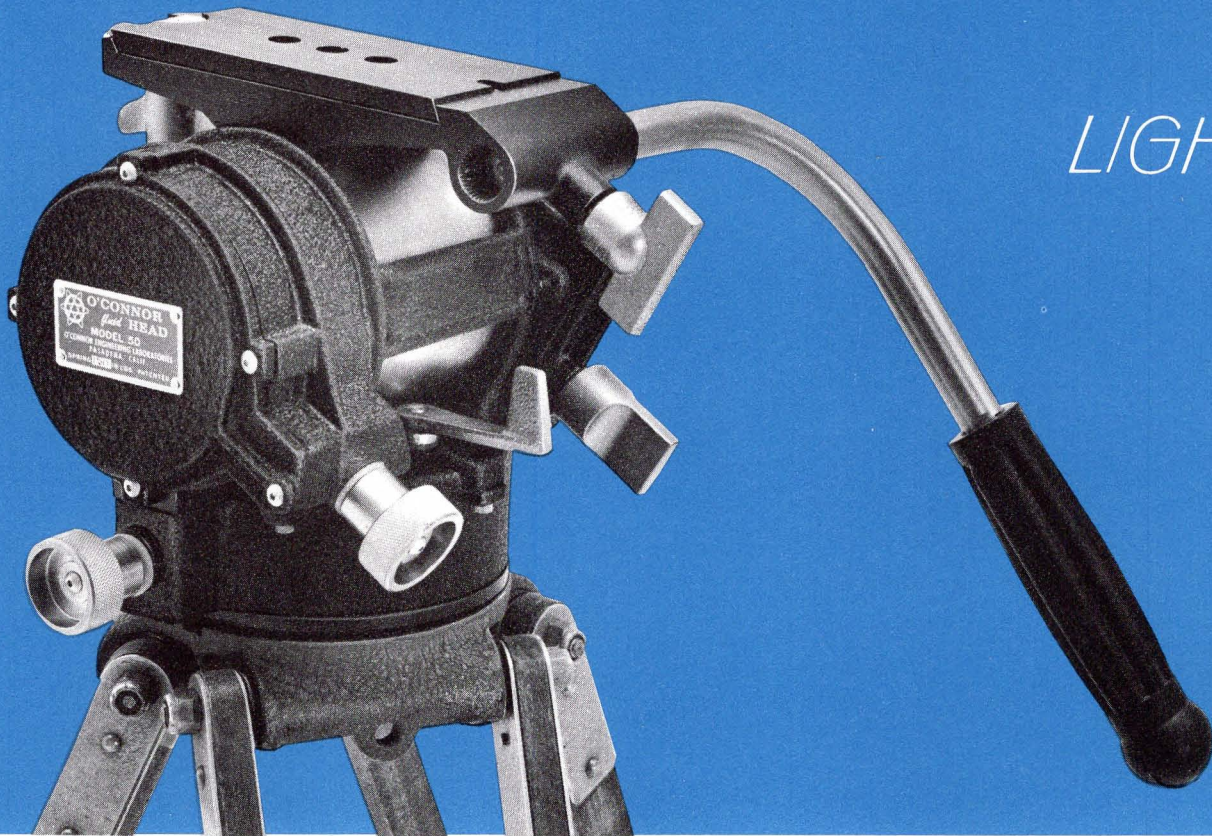
Capacity:	20 lbs.
Weight:	6 lbs.
Size:	8 3/4" high x 5 1/4" long x 7" wide
Operating limits:	Pan 360° continuous rotation. Tilt plus 45° to minus 45°. Tilt angles up to 90° may be obtained depending on camera used and handle position.
Torque control range:	Infinitely adjustable from 80 to 800 oz. inches @ 1 Rpm.
Base:	Pro Jr. (adapters available)
Camera Platform:	4 7/8" x 2 1/2" size
Camera Mounting Screw:	3/8-16, with knob
Tilt Balance:	Springless balance inherent in design
Temperature Range:	0°F. to 120°F.
Material:	Magnesium and Aluminum
Finish:	Magnesium, Dow 7 and baked black enamel Aluminum, anodized or baked black enamel
Bearing:	All rotating parts mounted between preloaded Timken bearings
Shipping weight:	9 lbs.



O'CONNOR ENGINEERING LABORATORIES, INC.

3490 E. Foothill Blvd., Pasadena, Calif. 91107 • Phone (213) 684-0838

PRINTED IN USA



LIGHT!

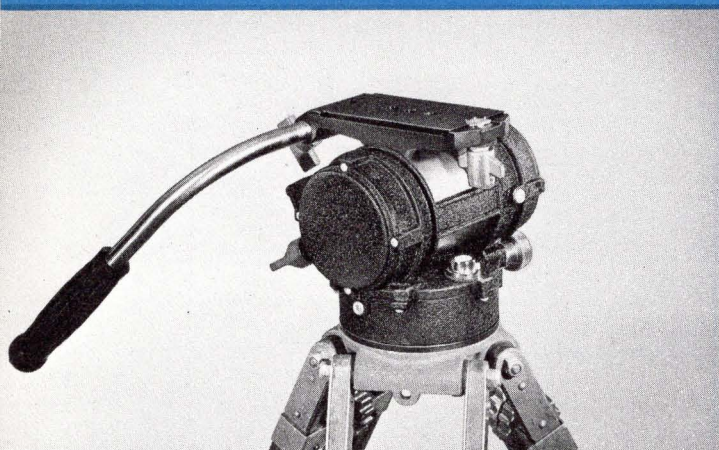
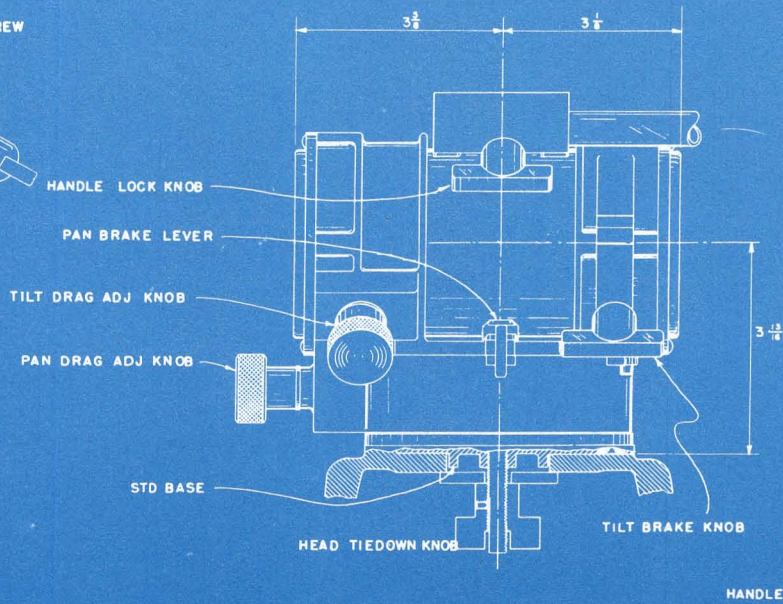
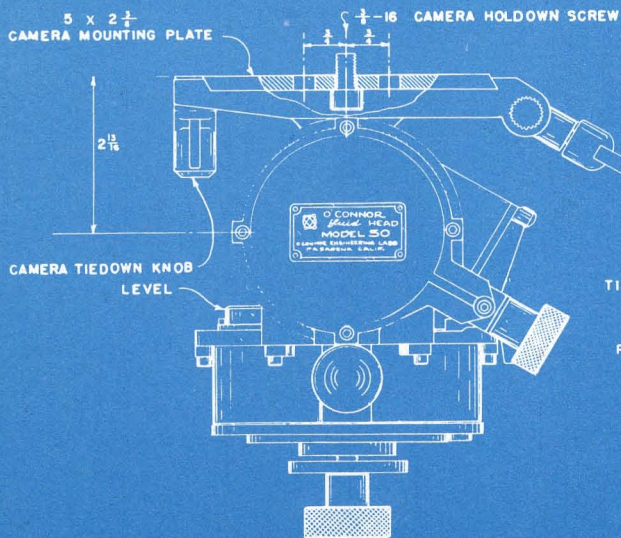
An exceptionally light weight head for cameras weighing up to 50 lbs.

This unusually light weight camera mount does the job of much larger, heavier heads. It gives you all the maneuverability you could ask for... steady, smooth panning, jerk-free tilting... made possible by the exclusive O'Connor fluid action principle. Invaluable for critical assignments where perfection is desired. Its compact size and light weight make it ideal for location shooting. Dependable, rugged O'Connor construction.

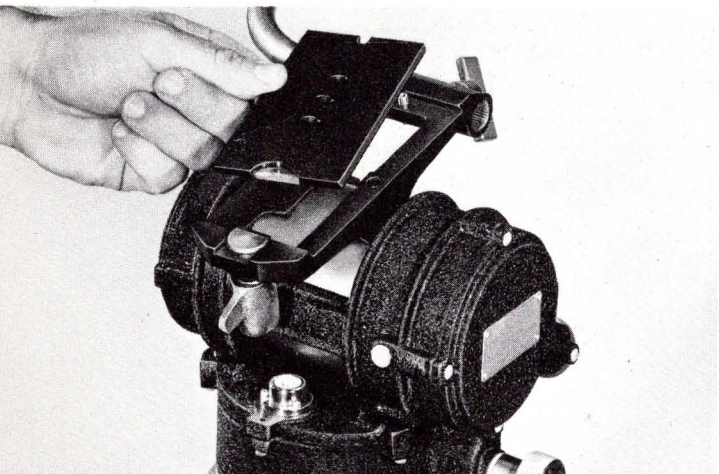
NOTEWORTHY FEATURES

- Pan and tilt drag are fully adjustable by turning easy-grip knobs.
- Counterbalanced in tilting with special 150 in. lb. torque rod. Brake holds camera steady in any position.
- Handle is angularly adjustable in the vertical plane. Quickly changed in the field for operation from right or left without tools. No loose parts.
- Camera mounting plate can be permanently attached to camera. Quickly locks to head with snap action.
- Timken pre-loaded roller bearings for smooth action.
- Bullseye level has 45 minute sensitivity. This is the angular deflection necessary to move bubble across vial.
- Sturdily built for use in the field.

O'CONNOR MODEL 50 FLUID HEAD



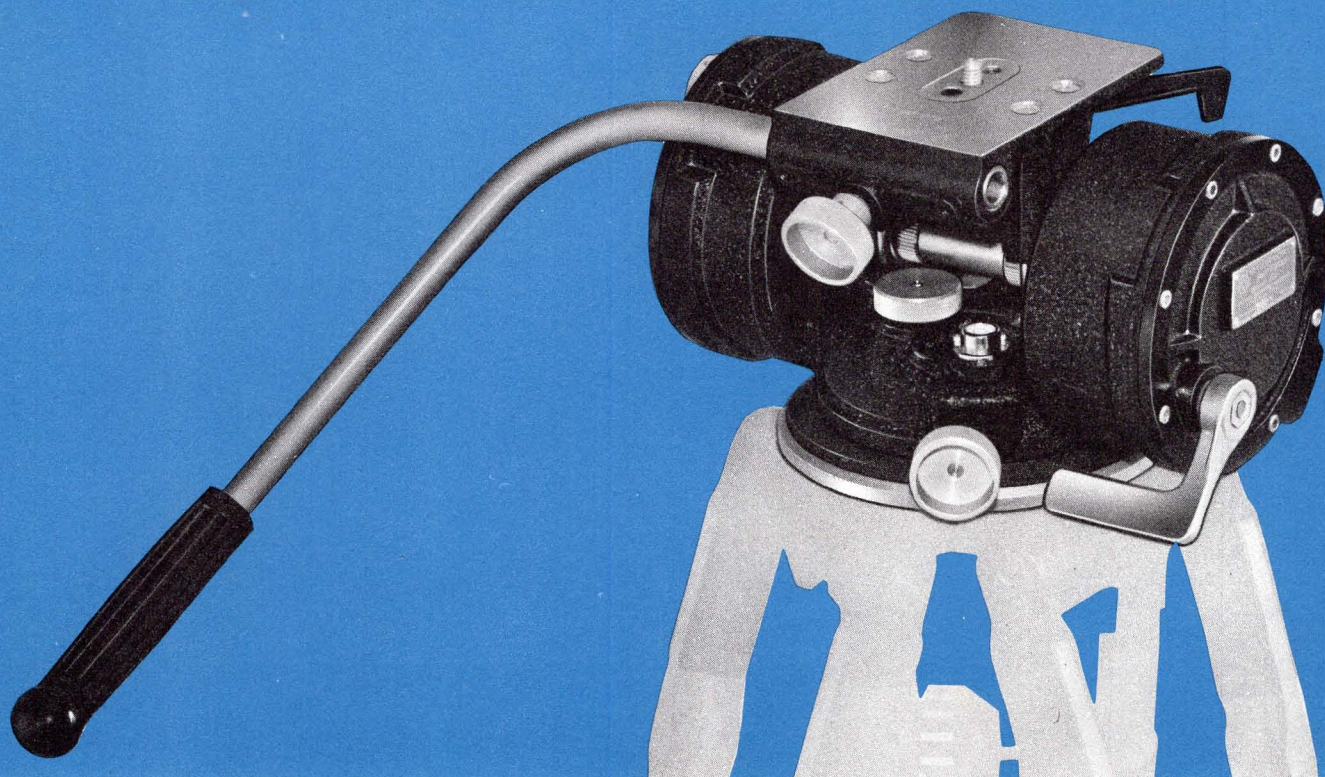
Small, light Model 50 handles big 50-lb. cameras with ease.



Mounting plate can be attached to camera permanently. Quickly locks onto head with snap action, holds securely.

SPECIFICATIONS

Capacity:	50 lbs.
Weight:	7 lbs.
Size (Approx.):	7" high x 7" wide x 7" long (excluding knobs & handle)
Operating limits:	Pan 360° continuous rotation Tilt plus 45° to minus 45°
Base:	Pro, Jr., or on special order, Mitchell Std.
Counterbalance:	150 inch lbs. @ 45° tilt
Camera mounting plate:	5" long x 2 3/8" wide with 3/8-16 holdown screw
Finish:	Black crackle enamel
Temperature range:	20°F to 120°F (Other ranges available on special order)
Bearings:	Timken pre-loaded roller
Material:	Magnesium and aluminum castings (External parts anodized or plated)
Shipping weight:	9 lbs.



*Ultra-smooth, lightweight head
for cameras weighing up to 100 lbs.*

The same rugged construction and dependable performance that have made the O'Connor Model 100 Fluid Head standard of the industry are inherent in the new Model 100-C. Yet the 100-C is eight pounds lighter, less to carry, easier to handle. With a lower profile, it is extremely maneuverable, smooth-flowing and controllable at all times. The cinematographer is in complete, positive, flexible control of his camera, free to follow the action at any speed, in any direction, knowing the head will obey his every command.

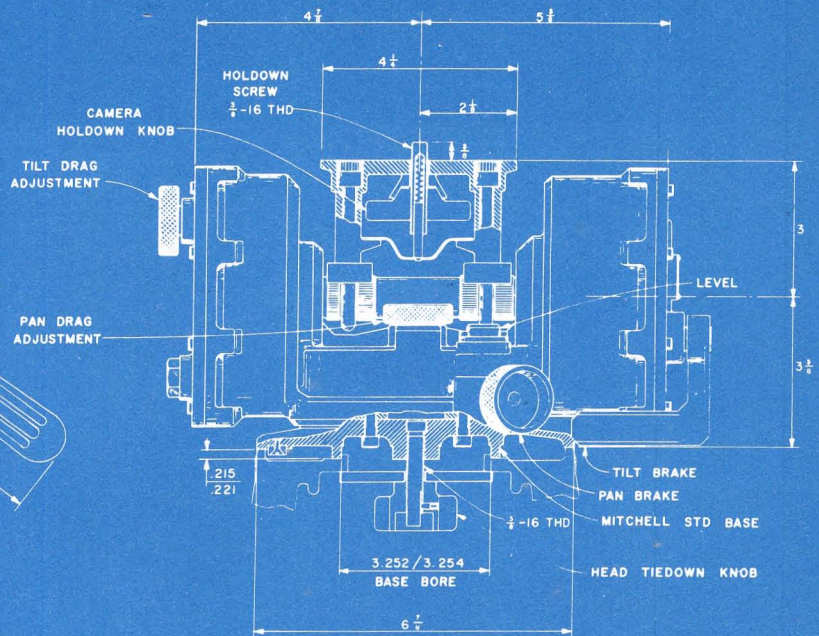
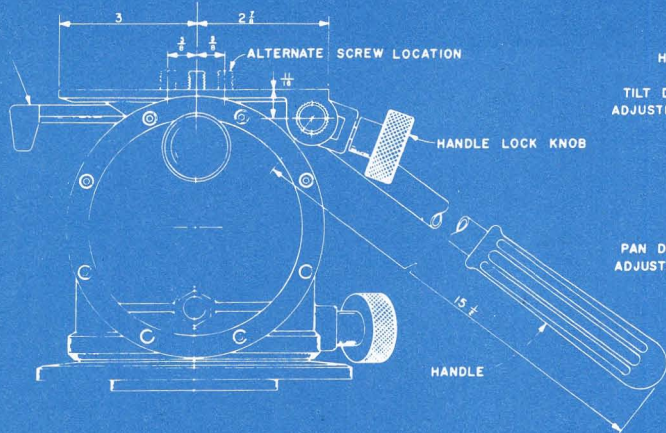
The O'Connor fluid action principle assures ultra-smooth, jerk-free panning and tilting of cameras weighing up to 100 lbs. The camera is counterbalanced at all times, even in extreme tilt positions, making operation of heavy cameras far easier. Panning and tilting can be done simultaneously, controlled by the same adjustable handle which can be attached to either side. The highest degree of professional cinematography is attainable with the O'Connor 100-C.

OUTSTANDING FEATURES

- Extremely lightweight — only 16 lbs.
- New, patented camera tie-down "cinch lever" permits mounting and removing camera quickly, safely.
- Ideal for 16mm, 35mm, and TV cameras with a total weight not exceeding 100 lbs.
- Rugged, heavy duty professional model.
- Designed for use with nearly every make of professional camera.
- Drag adjustment independent for pan and tilt.
- Independent mechanical locks for both pan and tilt.
- Counterbalancing camera is accomplished with special double springs. See specifications on back.
- All rotating moving parts are mounted on specially-designed, pre-loaded ball bearings.
- Overriding feature permits quick return on pan and tilt.
- Special patented synthetic seal rings provide complete protection against water, dust, sand, etc.
- Adaptable to handlebar type operation.
- Equipped with precision bull's-eye level.
- Wide operating range — below zero to + 120° F.

O'CONNOR MODEL 100-C FLUID HEAD

CAMERA HOLDOWN LEVER



GUARANTEE

Guaranteed against leakage, defective materials and workmanship for one year. Guarantee is null and void if head has been tampered with. All repairs must be made in the O'Connor shops.

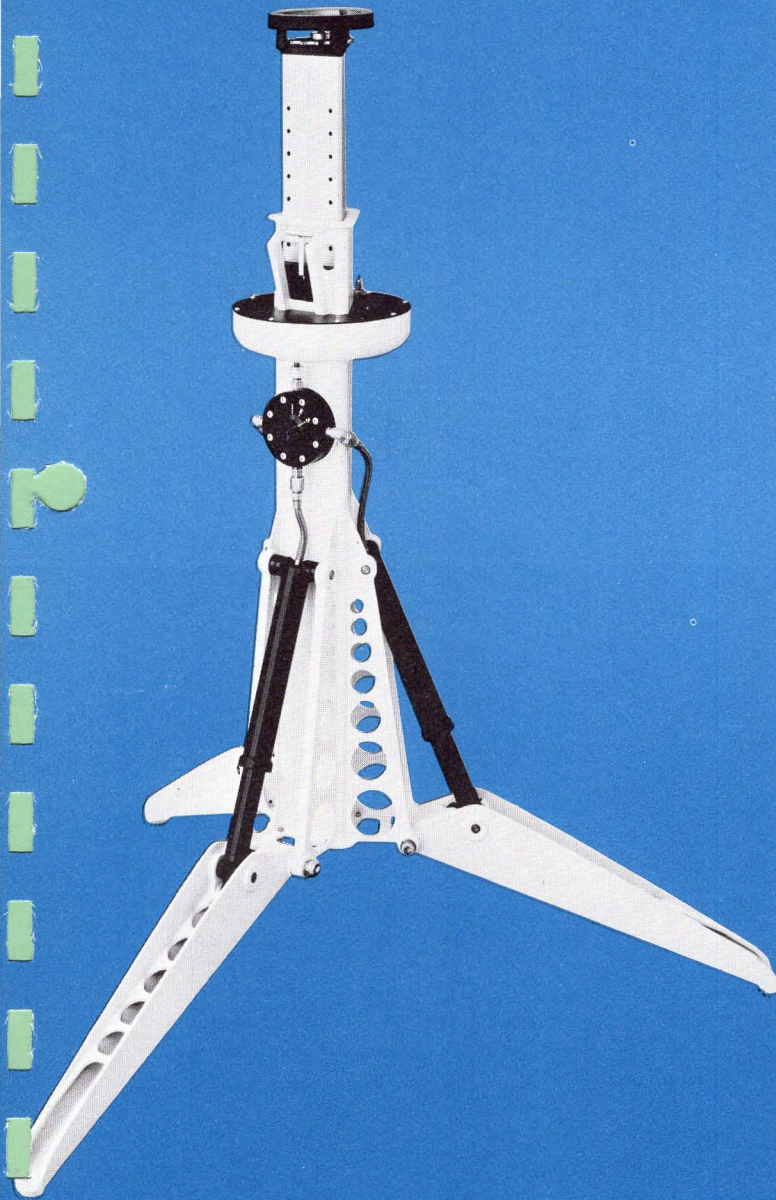
ORDERING INFORMATION

It is important when ordering to specify the type and weight of camera to be used and type of tripod, pedestal, dolly or high hat. If head is to be used under extreme conditions of weather, sand or salt, specify special finish desired. If special adapters or devices are to be provided, furnish detailed information and sketches. For carrying cases and other optional equipment, see accessories sheet.

SPECIFICATIONS

- Capacity: 100 lbs.
Weight: with handle and tie-down knob 16 lbs.
Size: (approx.) 7" high, 7" deep, 11" wide.
Operating limits: Pan, 360° continuous rotation.
Tilt, forward 60° to backward 60° from horizontal.
Base: Mitchell is standard. Pro Jr., and O'Connor Level — Head types optional.
Camera mounting screw: 3/8" — 16 with special lock lever.
Counterbalance: 500 in. lb. spring is standard. 300 or 700 in. lb. springs available on special order. To determine required spring, multiply total weight of camera x distance from camera platform to camera center of gravity x .75. Write for further details.
Material: Magnesium alloy castings. External parts Dow 7 painted or plated.
Finish: Black wrinkle baked enamel.
Operating range: 0° to + 120° F.
Bearings: Precision-ground deep groove ball bearings.
Shipping weight: 20 lbs.

MODEL 101 HYDRO-PED



The Hydro-Ped is a new concept to replace the tripod.

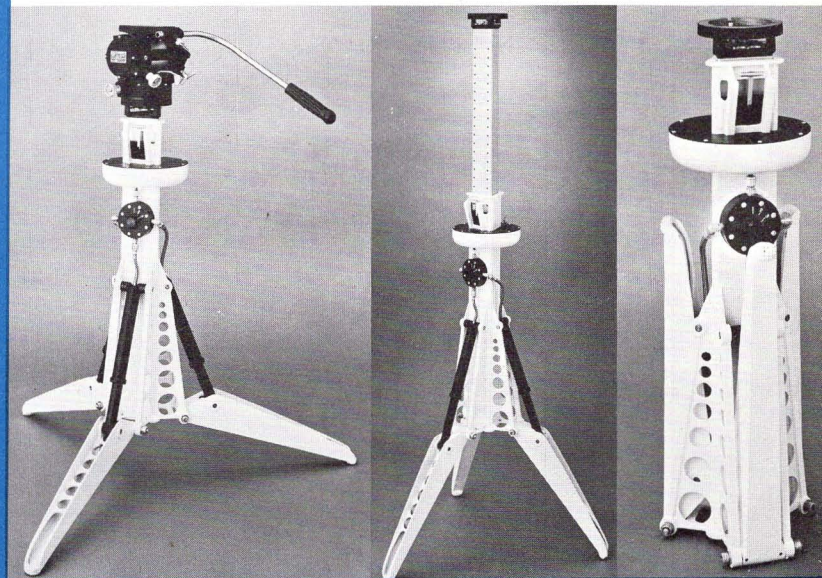
We have thought for years that a tripod was not the best way to support a camera. Our Structural Engineer programmed a computer with over 50 different designs with several hundred different material thicknesses.

Our conclusion . . . a tripod is not the best way to support a camera.

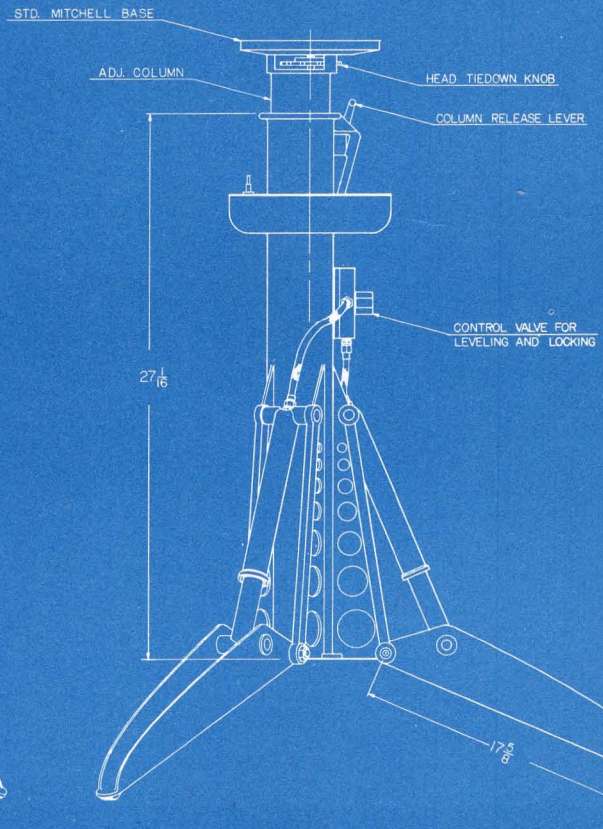
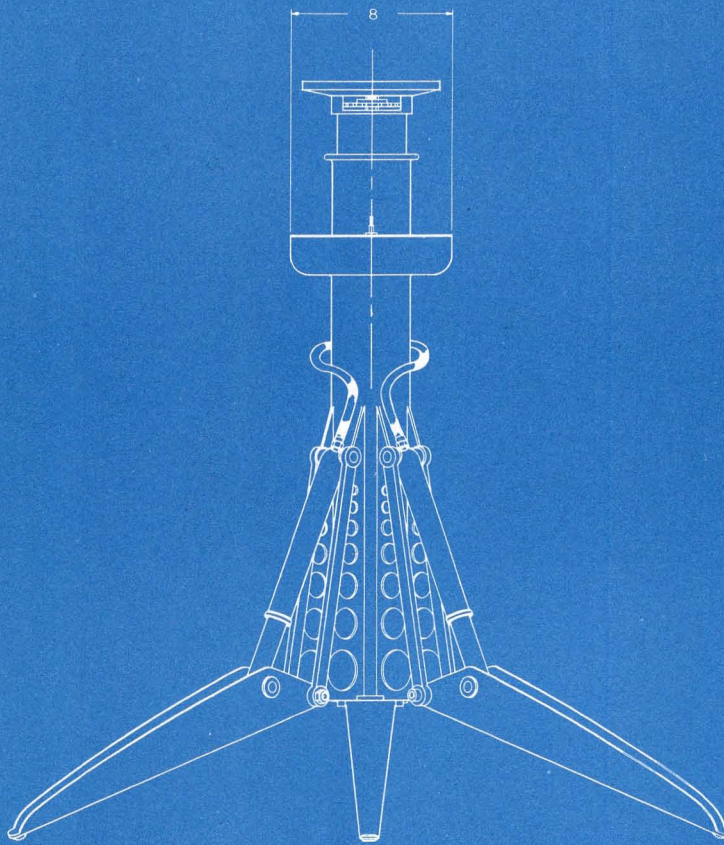
The 101 is 8 times as rigid in torsion and 4 times as rigid laterally as a comparable tripod.

This new device eliminates the need for a ball. It levels hydraulically on any terrain.

The 101 is more convenient to carry, safer and has a greater vertical adjusting range.



O'CONNOR MODEL 101 - HYDRO-PED



SPECIFICATIONS

Capacity:	100 lbs.
Weight:	19 lbs.
Size:	Folded — 29" long x 9" diameter Minimum operating height — 30 inches Maximum operating height — 60 inches
Leg Extension:	40 inches for maximum stability
Operating limits:	Level to 40° slope
Leveling:	Hydraulic
Base:	Mitchell or Pro Jr
Material:	Magnesium and Aluminum
Finish:	Magnesium, Dow 7 and baked black enamel Aluminum, anodized or baked black enamel.
Temperature Range:	Minus 40° to plus 120°
Bearings:	Adjustable taper sleeves for zero clearance.
Shipping Weight:	24 lbs.

GUARANTEE

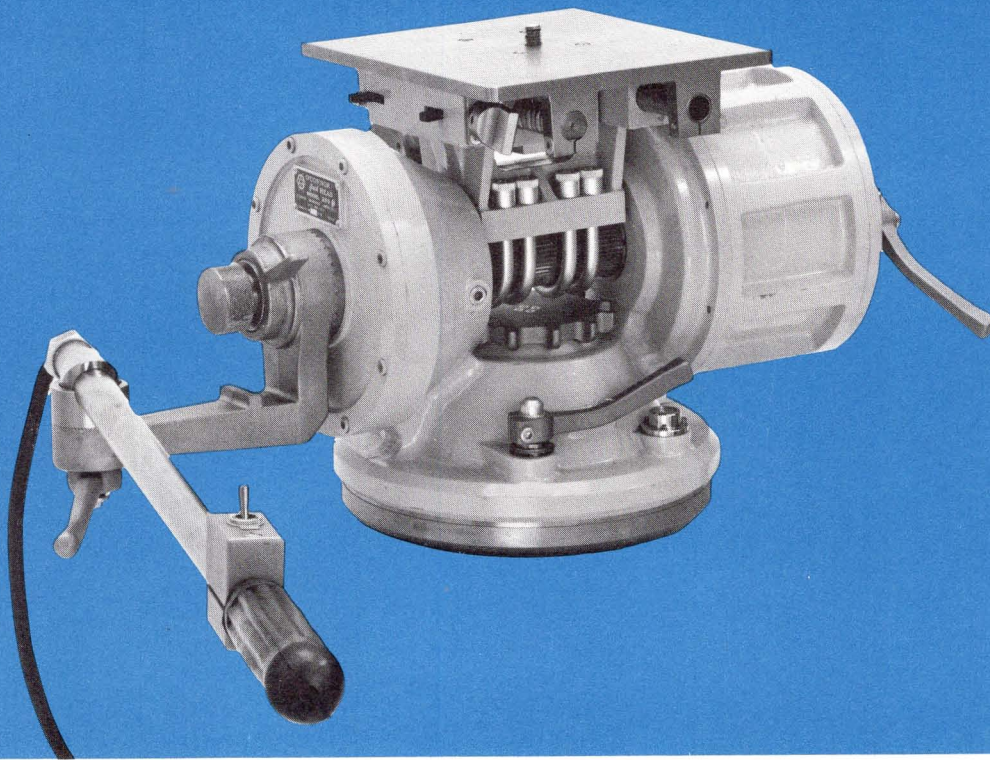
Guaranteed against leakage, defective materials and workmanship for one year. Guarantee null and void if head has been tampered with. All repairs must be made at the factory.



CONNOR ENGINEERING LABORATORIES, INC.

3490 E. Foothill Blvd., Pasadena, Calif. 91107 • Phone (213) 684-0838

PRINTED IN USA



The finest camera head made. Handles television and motion picture cameras up to 200 lbs.

Where flawless performance is demanded, the O'Connor 200-B fluid camera head is essential. This precision equipment incorporates all of the features which leading cinematographers know are necessary to fulfill the highest expression of their art. And it incorporates many refinements and advancements found only in this superb camera mount.

The O'Connor 200-B is engineered to handle large cameras such as the Mitchell BNC and color TV cameras up to 200 lbs. with remarkable ease. It is similar to the heads used at Cape Kennedy where extremely smooth, steady action is imperative.

Easy adjustments permit keeping the camera in perfect balance at all times for positive control. Ultimate smoothness in both panning and tilting is provided by Timken bearings plus O'Connor's exclusive fluid action, acknowledged to be the most dependable ever developed. With the O'Connor 200-B, the cinematographer is in complete command of the situation at all times, confident that the finished production will do justice to his talents.

IMPORTANT FEATURES

Accommodates television and motion picture cameras weighing up to 200 lbs.

All moving parts are mounted on ball bearings or Timken roller bearings.

Finger-tip instantaneous locking of both pan and tilt.

Pop-up camera tie-down screw for ease of tightening.

Precision bull's eye level. Guaranteed accuracy of 30 minutes.

Tilts forward 75° and backward 75°. Pans 360° continuous rotation.

Camera platform adjustable for weight distribution with camera in place.

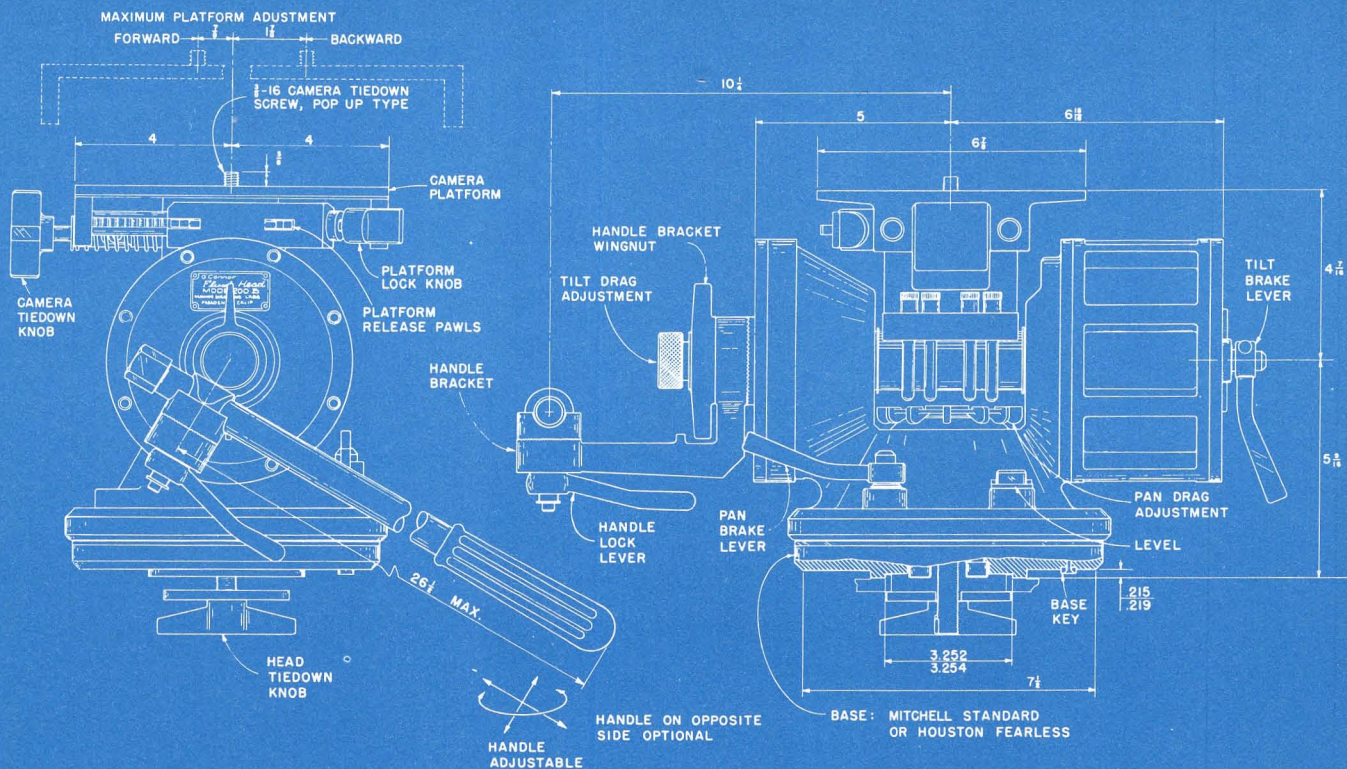
Universally adjustable handle.

Furnished with Mitchell Standard and Houston Fearless base.

Can be furnished complete with O'Connor Model 201 level head ball base.

O'Connor Model 200 heads have been in continuous use for over 10 years.

O'CONNOR MODEL 200-B FLUID HEAD



GUARANTEE

Guaranteed against leakage, defective materials and workmanship for one year. Guarantee is null and void if head has been tampered with. All repairs must be made in the O'Connor shops.

ORDERING INFORMATION

It is important when ordering to specify the type and weight of camera to be used and type of tripod, pedestal, dolly or high hat. If head is to be used under extreme conditions of weather, sand or salt, specify special finish desired. If special adapters or devices are to be provided, furnish detailed information and sketches. For carrying cases and other optional equipment, see accessories sheet.

LEASE/PURCHASE PLAN

O'Connor 200-B heads are available on lease with option to buy. Write for details.

SPECIFICATIONS

Capacity:	Through 200 lbs.
Weight:	35 lbs.
Size:	10" high, 18" wide, 8" deep.
Base:	Mitchell Standard and Houston Fearless.
Camera mounting screw:	3/8"-16, pop-up type.
Counterbalance:	Available with 11 spring ranges between 300 inch lbs. and 1800 inch lbs.
Material:	Aluminum alloy castings. (External parts anodized or plated.)
Finish:	Black wrinkle enamel.
Temperature range:	0° to 120° F.
Bearings:	Precision-ground ball bearings, or Timken roller bearings.
Shipping Weight:	45 lbs.