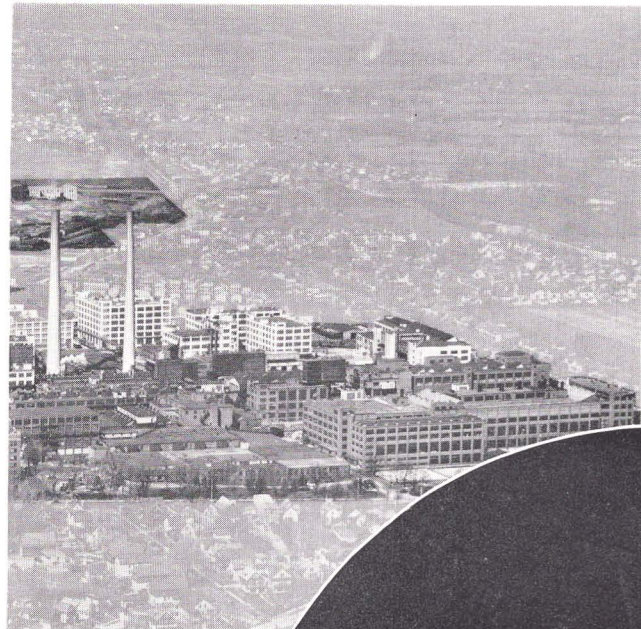




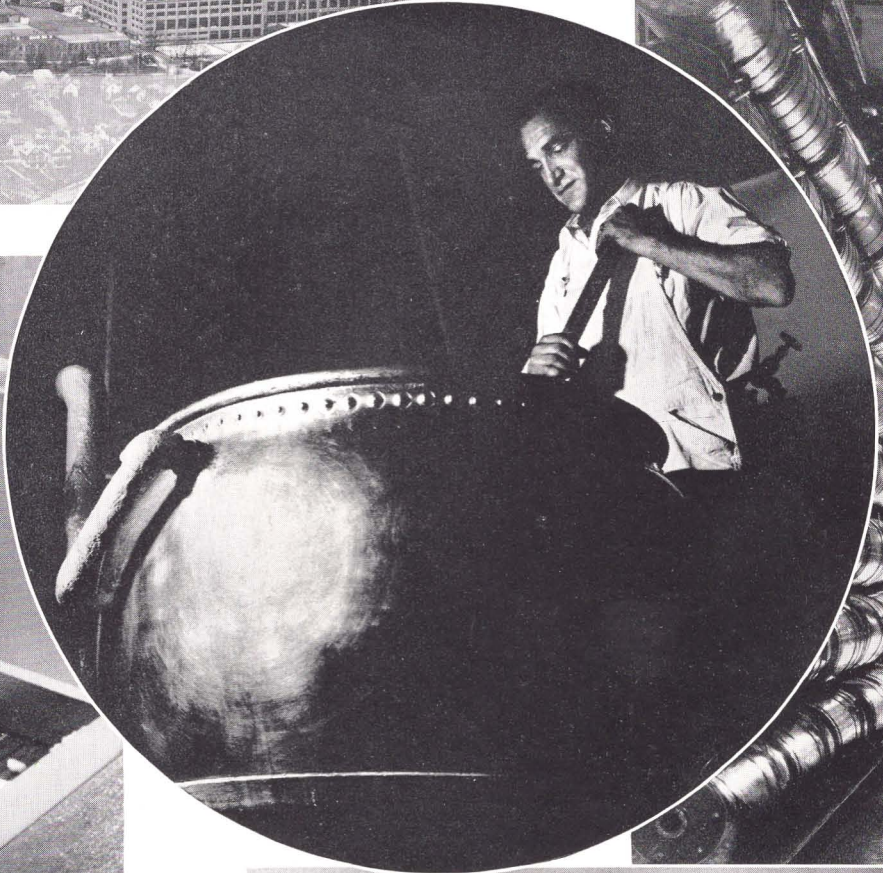
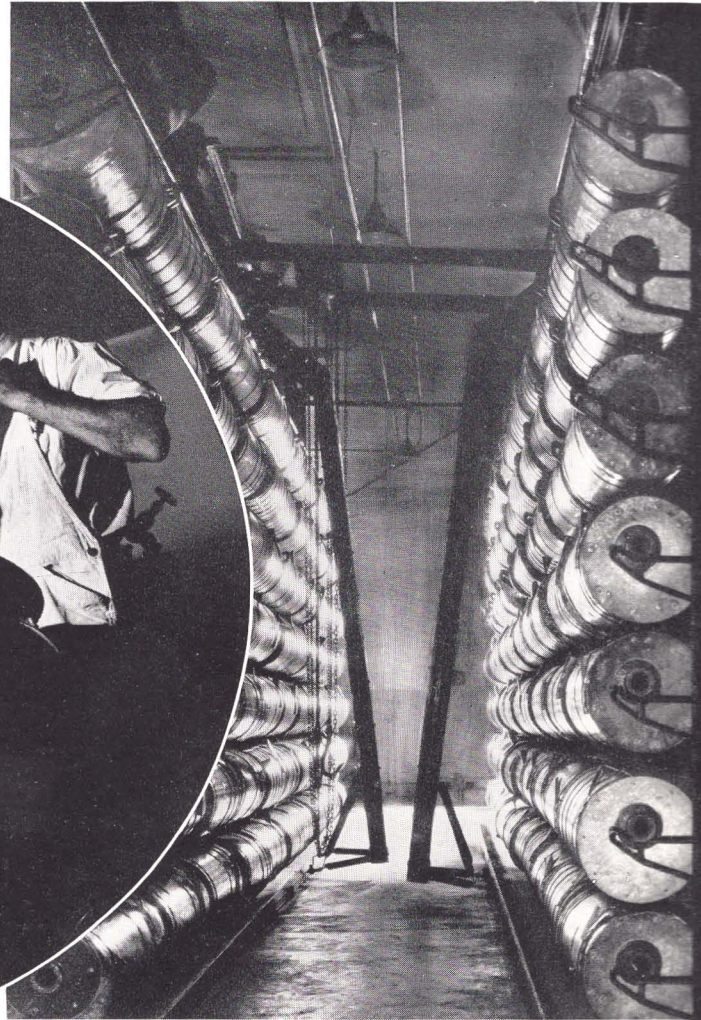
# KODAK BANTAM *SPECIAL*

Eastman's Exquisite Miniature for Taking  
Black-and-White and Kodachrome Pictures



BELOW—Rolls of Kodak Film base stored where temperature and humidity are controlled to a fraction of a degree.

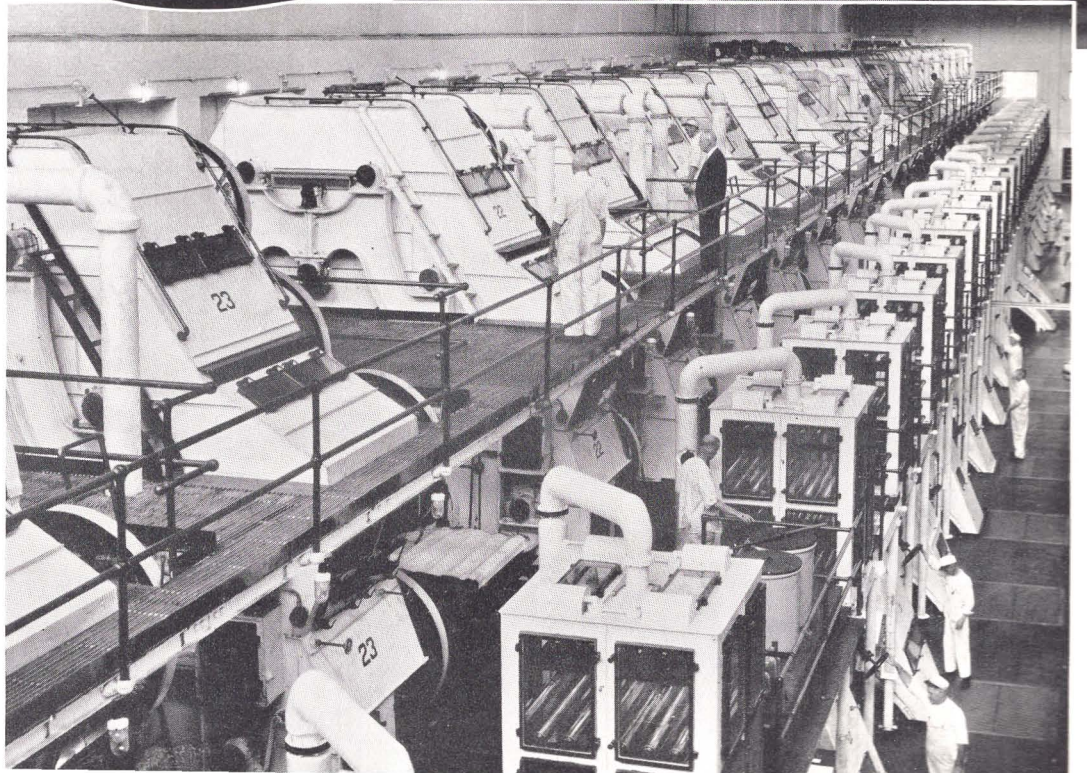
CIRCLE—Mixing “dope” — honey-like fluid that is later to be converted into film.

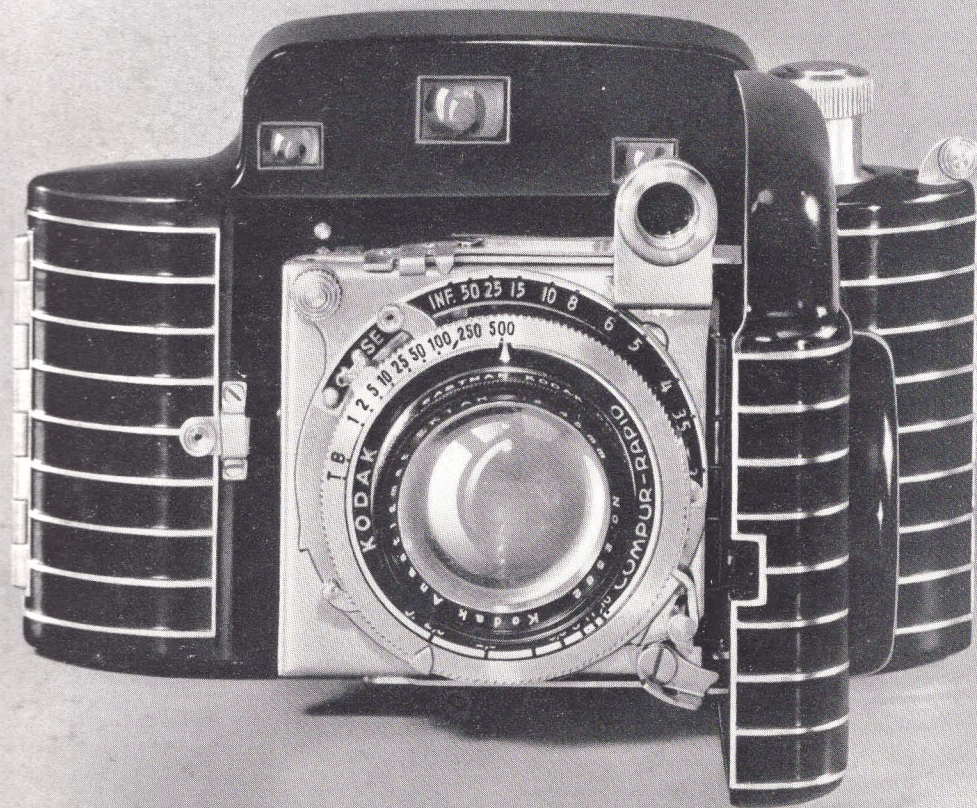


ABOVE—Drying purified cotton linters preparatory to their being used in the making of film base.

LEFT—Evaporating silver nitrate solutions for crystallization.

RIGHT—A battery of film-making machines.





**KODAK BANTAM SPECIAL** is a new, improved miniature camera for taking black-and-white and full-color Kodachrome pictures. Its watch-like precision...boundless versatility...and new design...combined with the many other features described on the pages that follow, instantly set the camera apart from the usual miniature.

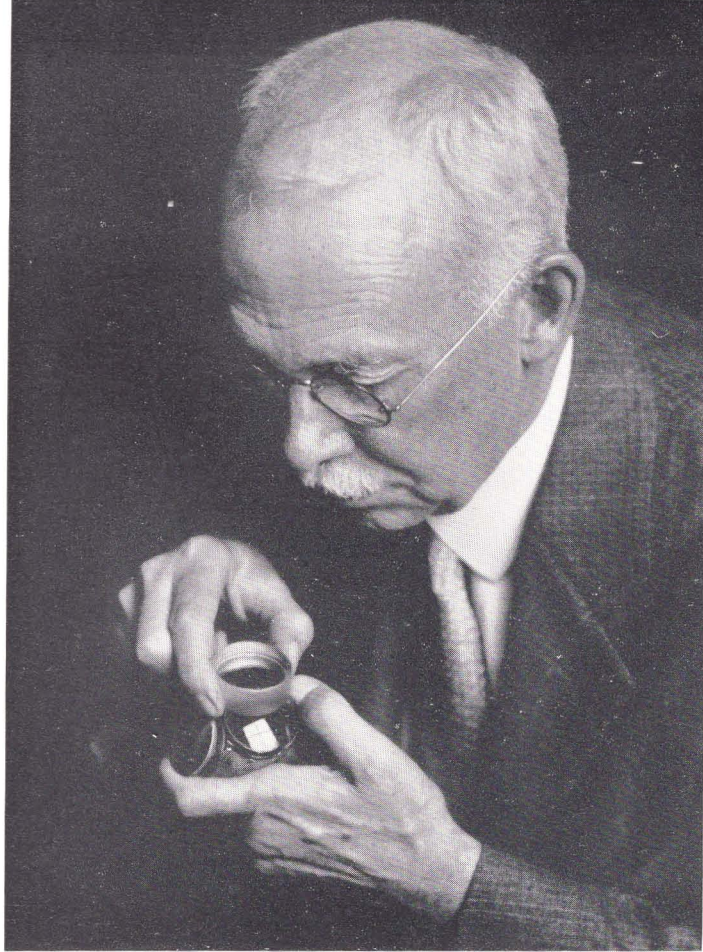


A

B

C

A—Actual negative size of Kodak Bantam Special. B—Standard low-cost 2¾ x 4-inch enlargement. C—Kodak Bantam Special enlargement. Picture made with Kodak Bantam Special, 1/500 second at *f*.6.3. Kodak Super X Film.



## EKTAR LENS

There is no better  $f.2.0$  camera lens available – regardless of price – than the EKTAR  $f.2.0$  (45 mm.) lens of Kodak Bantam Special.

A six-element super-anastigmat, it is the creation of world-famous designers working in the most modern of Eastman laboratories.

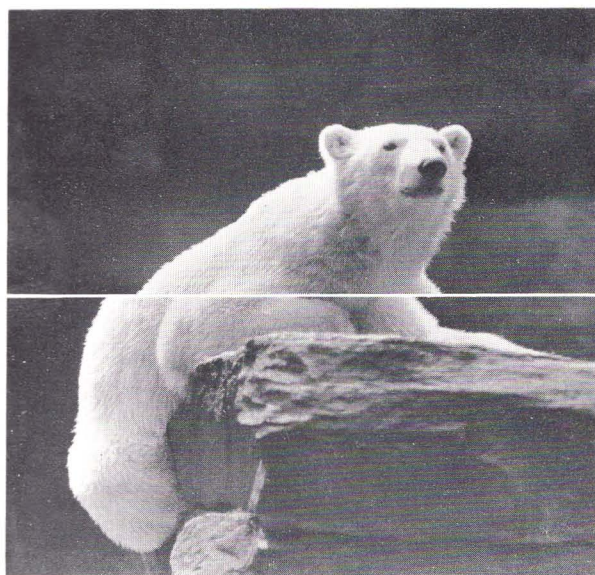
Free from astigmatism, curvature of field, distortion, coma, spherical and chromatic aberration – even at its largest opening – the EKTAR lens of Kodak Bantam Special makes it possible to take clear, sharp pictures anywhere; any time.



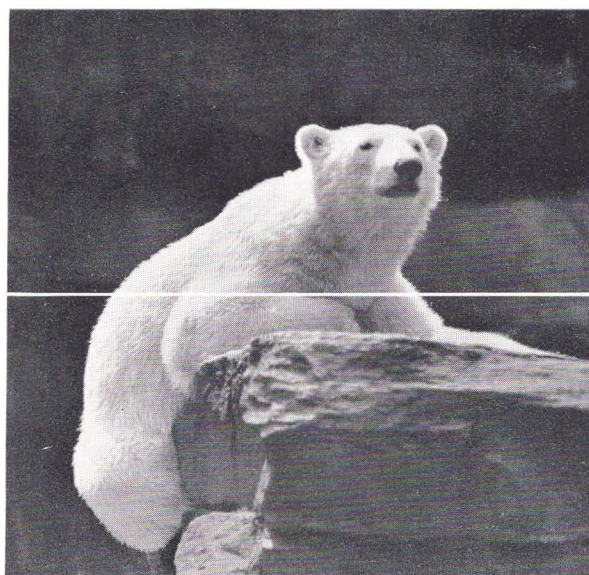
A simple home shot, with the aid of Photoflood bulbs, for Kodak Bantam Special. 1/100 second at *f*.2.8. Kodak Panatomic Film.

## SPLIT-FIELD RANGE FINDER

The built-in split-field range finder, which gives larger magnification of an image, is easier to operate...is more accurate. Movement of a single lever measures the distance between subject and lens and automatically focuses the camera.



When the Kodak Bantam Special is out of focus . . . a split image is seen in the range finder.



To focus the camera, you need only to match the two halves of the picture-image seen in the range finder.

---

## FOCUSING OCULAR

A focusing ocular, adjustable to take care of any eye accommodation, assures even greater focusing accuracy...makes possible needle-sharp lens images of objects from 3 feet to infinity.



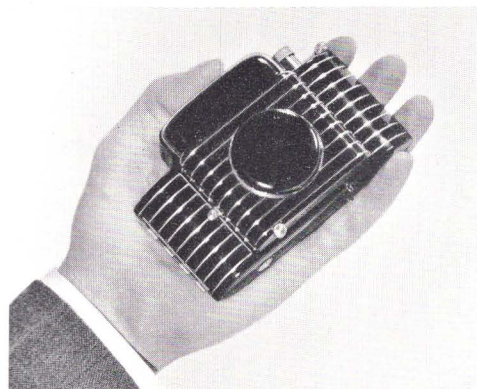
An easy artificial light shot when made with Kodak Bantam Special. Lens wide open, 1/25 second. Kodak Super X Film.



## COMPUR-RAPID SHUTTER

The Compur-Rapid shutter of Kodak Bantam Special with nine speeds from 1 to  $\frac{1}{500}$  second, plus "Time" and "Bulb," stops the fastest action or enables you to work in the most difficult of light.

---



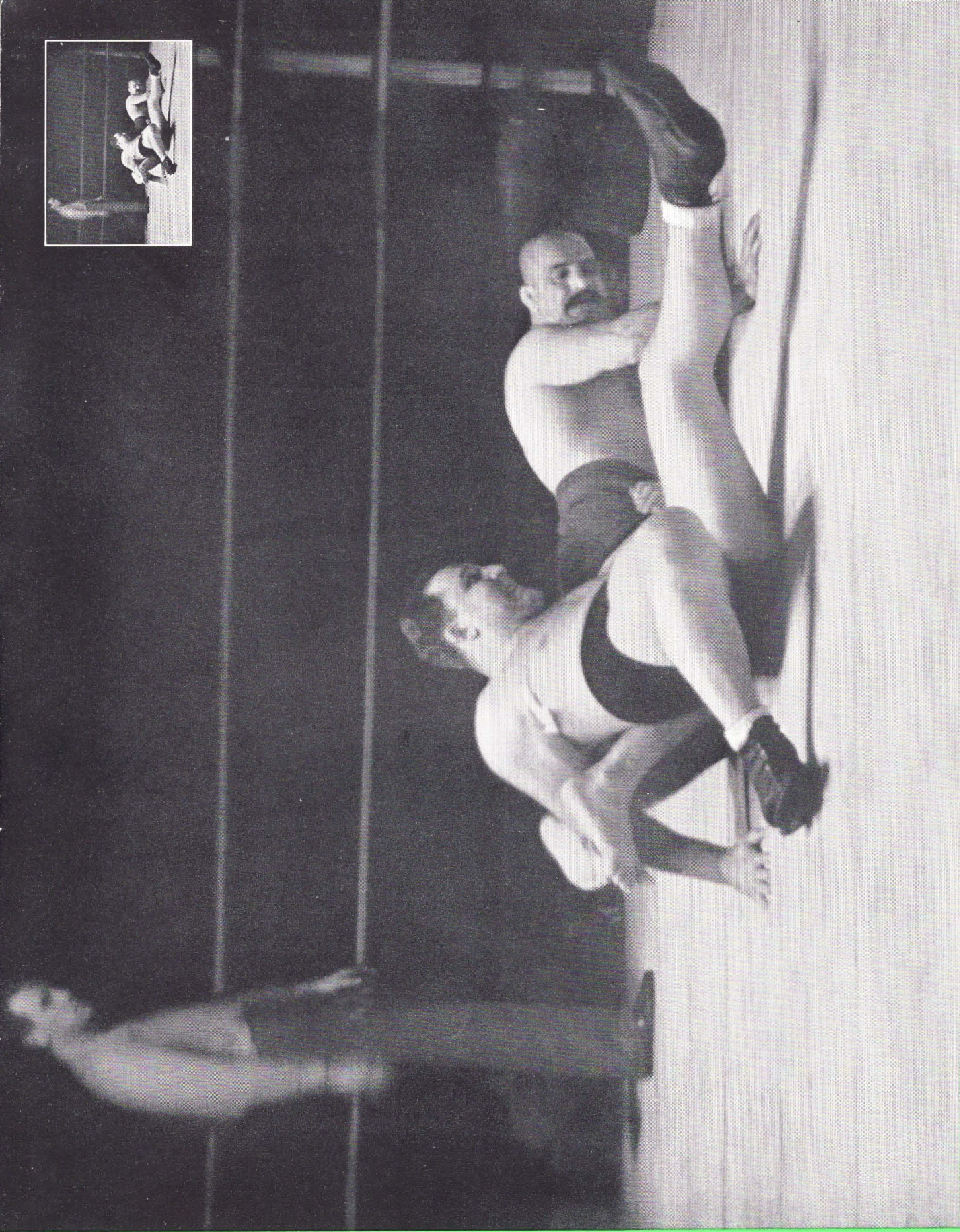
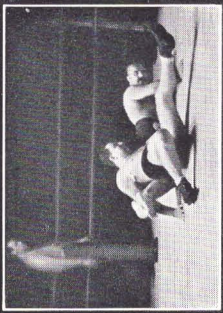
### PALM SIZE

So small that it fits the palm of the hand, Kodak Bantam Special is truly a miniature camera that can be carried in the pocket. Length,  $4\frac{7}{8}$ "; width  $3\frac{1}{8}$ "; thickness,  $1\frac{13}{16}$ ". Weighs but 16 ounces.

---

## BEAUTIFUL AND BRILLIANT

Decidedly different in design, Kodak Bantam Special is both beautiful and brilliant with its stainless steel fittings and die-cast aluminum body which, when closed, offers complete protection for all operating parts from dirt, dust and injury.



Even under the most adverse conditions, Kodak Bantam Special "gets the picture"—and with action. 1/50 second at *f*.2.0. Kodak Super X Film.

## LOADS WITH EASE



**K**odak Bantam Special is so easy to load that the spool of film practically falls into place. And the 8-exposure roll cuts down waiting time for finished prints, as well as making possible quicker changes from black-and-white Panatomic or Super X Film to full-color Kodachrome Film.

---

## AUTOMATIC FILM LOCK

**T**he automatic film centering and locking device of Kodak Bantam Special assures you of correct movement of the film and a full roll of properly centered negatives.

---

## RECEDING WINDING KNOB

**A** special type of film winding knob extends for ease in turning from one picture to the next... recedes and is out of the way when not in use.



Grace and beauty of wing motion stopped by Kodak Bantam Special in 1/300 second at *f*.5.6. Kodak Panatomic Film.

# SHOOTS VERTICALLY AS EASILY AS HORIZONTALLY

Kodak Bantam Special is a miniature that works as easily in a vertical position as it does horizontally, a feature not characteristic of most miniature cameras.

---

## OTHER FEATURES

New closing device. Prevents possible damage to lens.

Focuses from 3 feet to infinity. Depth of field with diaphragm set at *f.16*, and focused at 10 feet, is 4  $\frac{1}{2}$  feet to infinity.

Flush-type sliding film window.

Range of diaphragm, *f.2.0* to *f.16*.

Hinged back.

Special film-pressure plate.

Lever shutter release (plunger type or cable release may be added).

Tripod socket for horizontal position.



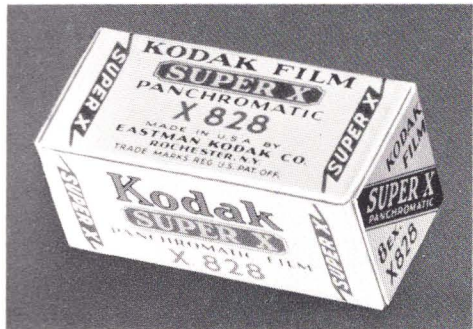
Baby in a bubble bath, caught by artificial light with Kodak Bantam Special in 1/50 second at  $f.4.5$ . Kodak Panatomic Film.

# YOUR CHOICE OF FOUR FINE FILMS

Kodak Bantam Special loads with any of four Kodak 8-exposure roll films—films with FINE GRAIN...SPEED...COLOR.



**PANATOMIC FOR FINE GRAIN**—A panchromatic film for black-and-white pictures with an almost atomic fineness of grain that makes it possible to get contact print quality in giant-size enlargements. No. F828, per roll, \$.20.



**SUPER X FOR SPEED**—A super-speed panchromatic film that makes shooting of black-and-white pictures by artificial light as practical as by daylight. No. X828, per roll, \$.20.



**KODACHROME FOR COLOR OUTDOORS**—A unique color film that provides gorgeous, full-color transparencies with the ease of ordinary black-and-white pictures. May be viewed as they are, or when mounted in slides may be projected on a screen by means of the Kodaslide Projector (see page 15). No. K828, price: \$1.35 per roll. Includes processing in the Kodak Laboratories, Rochester, N. Y., and return postage within the United States.



**KODACHROME TYPE A FOR COLOR INDOORS**—Especially color-balanced in manufacture for use under artificial light. Eliminates the necessity of a filter when used with Photofloods. No. K828A, price: \$1.35 per roll.



A stage shot made with the EKTAR lens of Kodak Bantam Special wide open. 1/50 second. Kodak Super X Film.



# CARRYING CASE

Smooth brown sole leather . . . velveteen-lined. Holds camera snugly, and provides space for three filters or other lens attachments. With shoulder straps, \$5.50.

---



## FILTERS

Kodachrome Haze Filter for shooting Kodachrome pictures of extremely distant landscapes in which excessive haze appears, \$1.50.

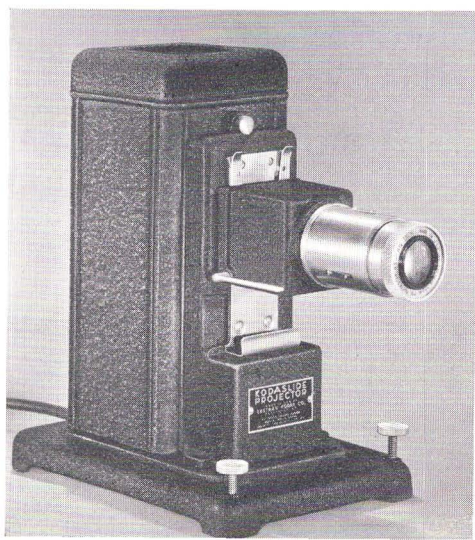
Kodachrome Filter for Photoflood, with K828 film under Photofloods, and Type A Kodachrome Filter for Daylight when exposing Type A Kodachrome in daylight, \$1.50 each.

Wratten Filters, any series in No. 5 Mounts, \$2.85 each.

---

# KODASLIDE PROJECTOR

For showing screen images of Kodachrome transparencies, or black-and-white film positives mounted in 2" x 2" glass slides.

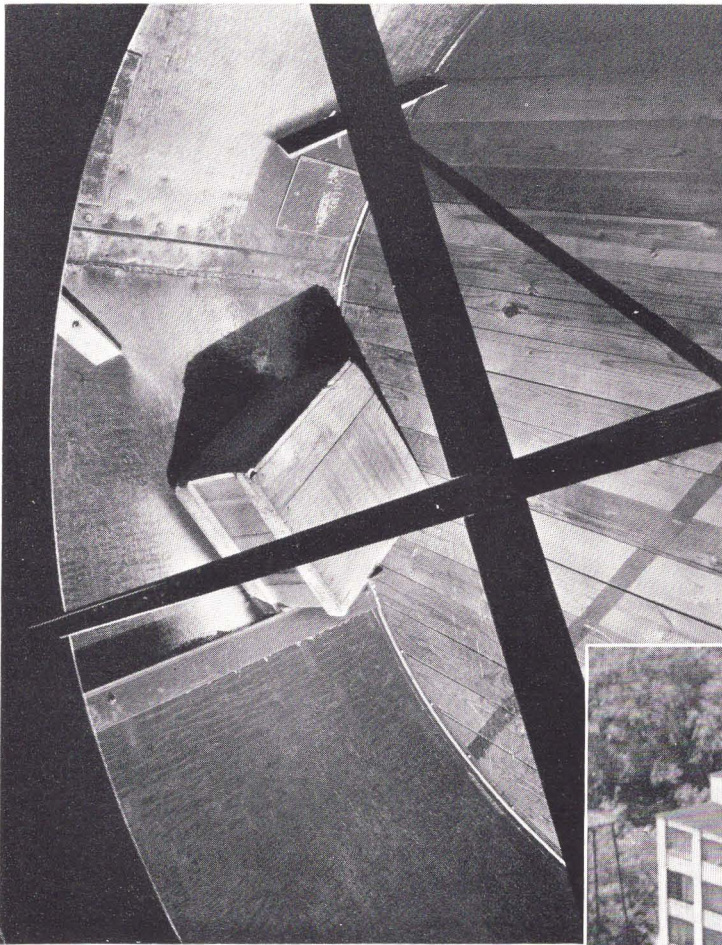


4 $\frac{7}{8}$ " projection lens, 200-watt, 115-volt lamp, black-enamel crinkle finish, dull-nickel operating parts, gravity feed. Measures 10 $\frac{1}{2}$ " high, 6 $\frac{1}{2}$ " x 9 $\frac{1}{2}$ " at the base. Weighs 5 lbs. \$48.50.

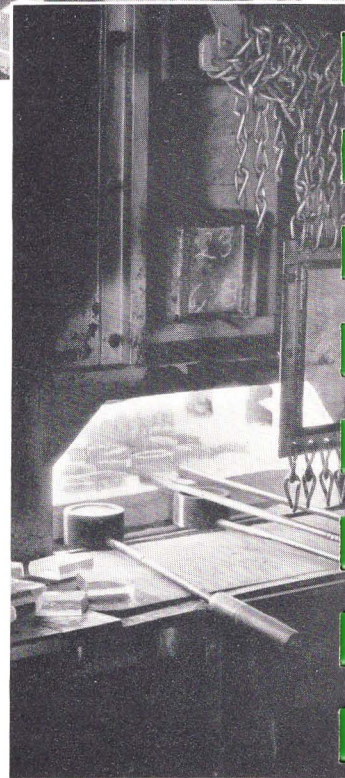
# WHY EASTMAN-MADE CAMERAS LEAD IN VALUE



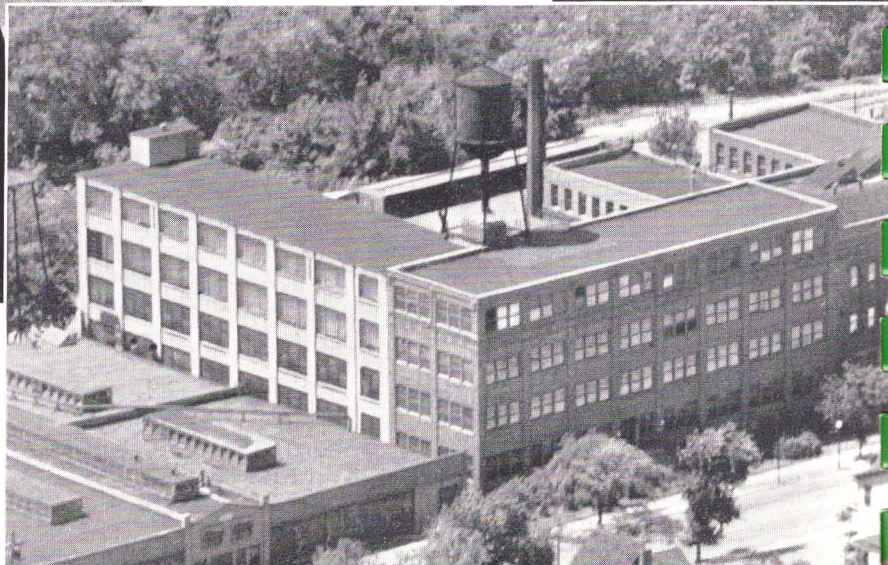
ABOVE—Kodak Office and Camera Works: Where, in addition to a large office force, more than 2,000 highly skilled artisans and craftsmen contribute to the production of Kodaks, and other photographic equipment for the amateur and professional.

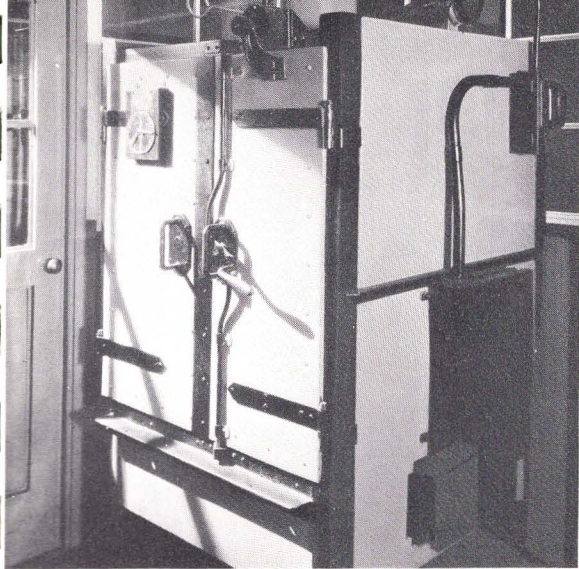


ABOVE—A "tumbling test" of packed Kodaks must be "passed" periodically by cameras and crates without damage to case or contents.

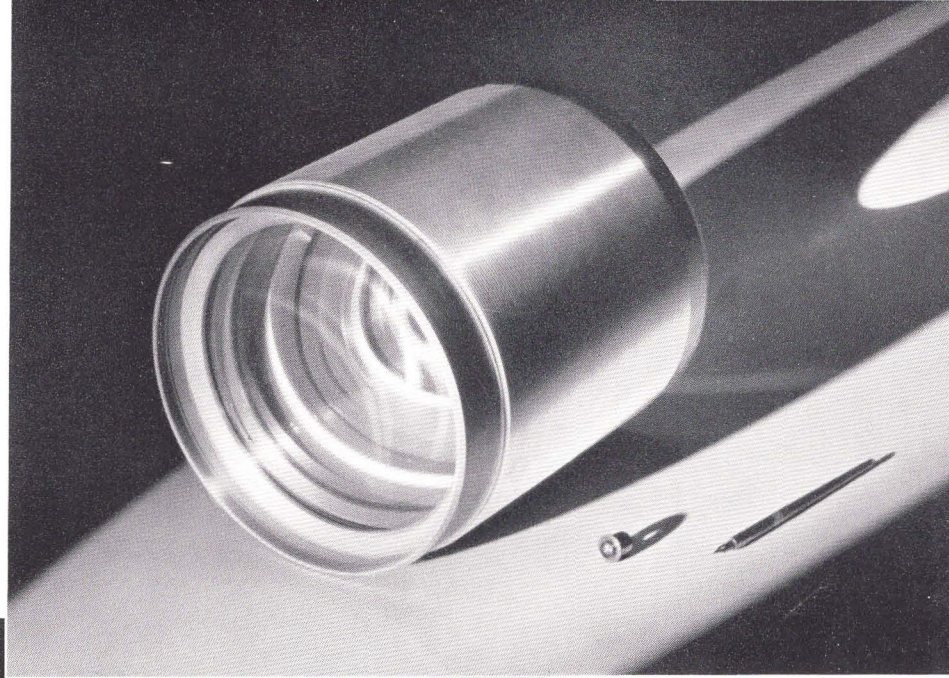


RIGHT—The first step in lens making: Optical glass is softened in a furnace heated to a temperature of 1600 degrees, after which it is molded into lens discs.

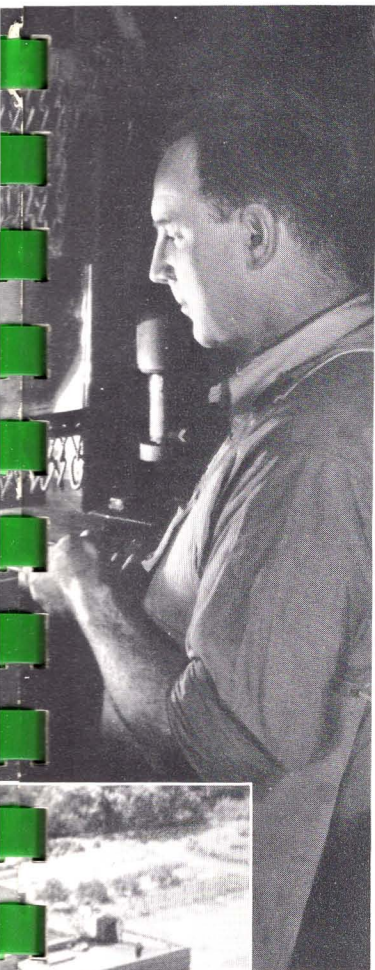




ABOVE—Subjecting Kodaks to excessive cold, heat, and humidity, to assure perfect world-wide performance.

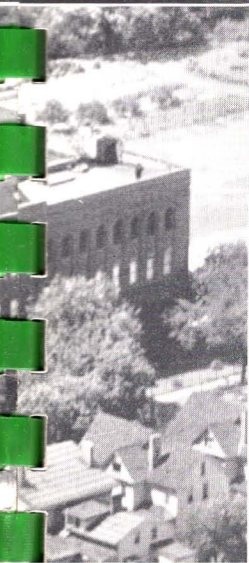


ABOVE—An Eastman aerial lens and a lens for an inexpensive Kodak—both made from formula-calculations of a staff of renowned lens designers.



BELOW—Assembling automatic shutters: A job that requires the delicate handling of parts as minute as those found in the most expensive timepieces.

ABOVE—Leather, glue, metals, rubber—all materials entering into the manufacture of cameras—are tested by a laboratory within the Camera Works.



LEFT—Hawk-Eye Works. Home of the EKTAR anastigmat lens and many other lenses which have won fame the world over.

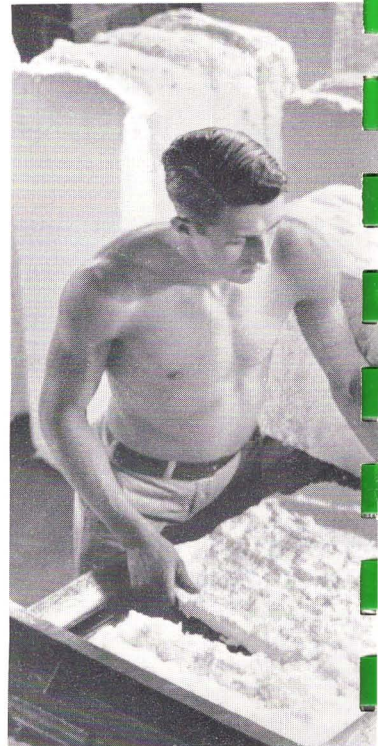
# WHY KODAK FILM IS THE WORLD'S MOST WIDELY USED FILM

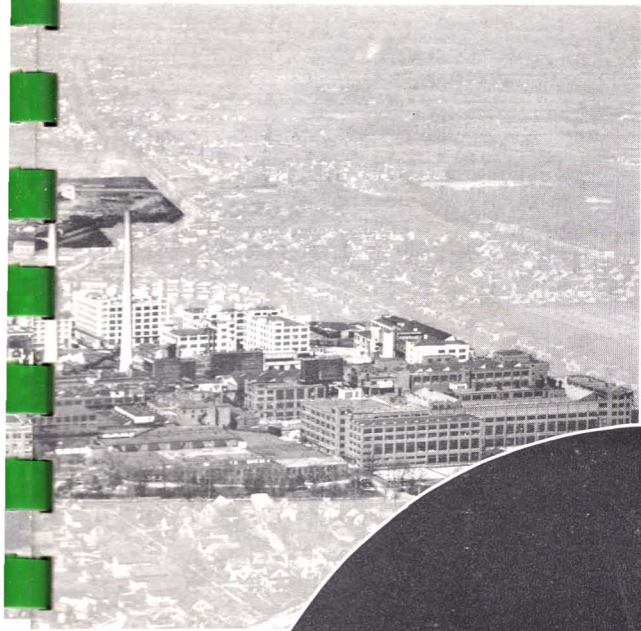


Used in every "corner" of the globe, there are many reasons why Kodak Film is the world's most widely used film. These two pages show briefly a few of the reasons for this leadership.

ABOVE RIGHT—Kodak Park—home of Kodak Film. A mammoth plant where nearly 10,000 employees are ever working for perfection, and purity of product.

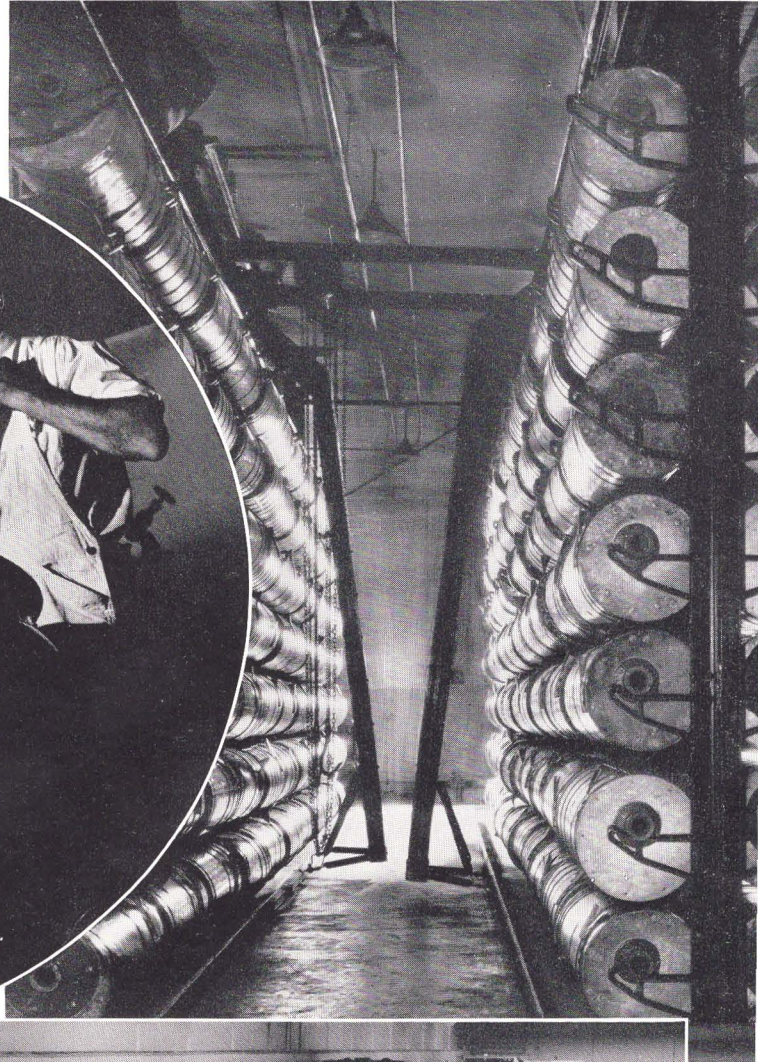
BELOW—Kodak Research Laboratories—A university in the sphere of photographic science from which have come many of the world's greatest photographic discoveries.





BELOW—Rolls of Kodak Film base stored where temperature and humidity are controlled to a fraction of a degree.

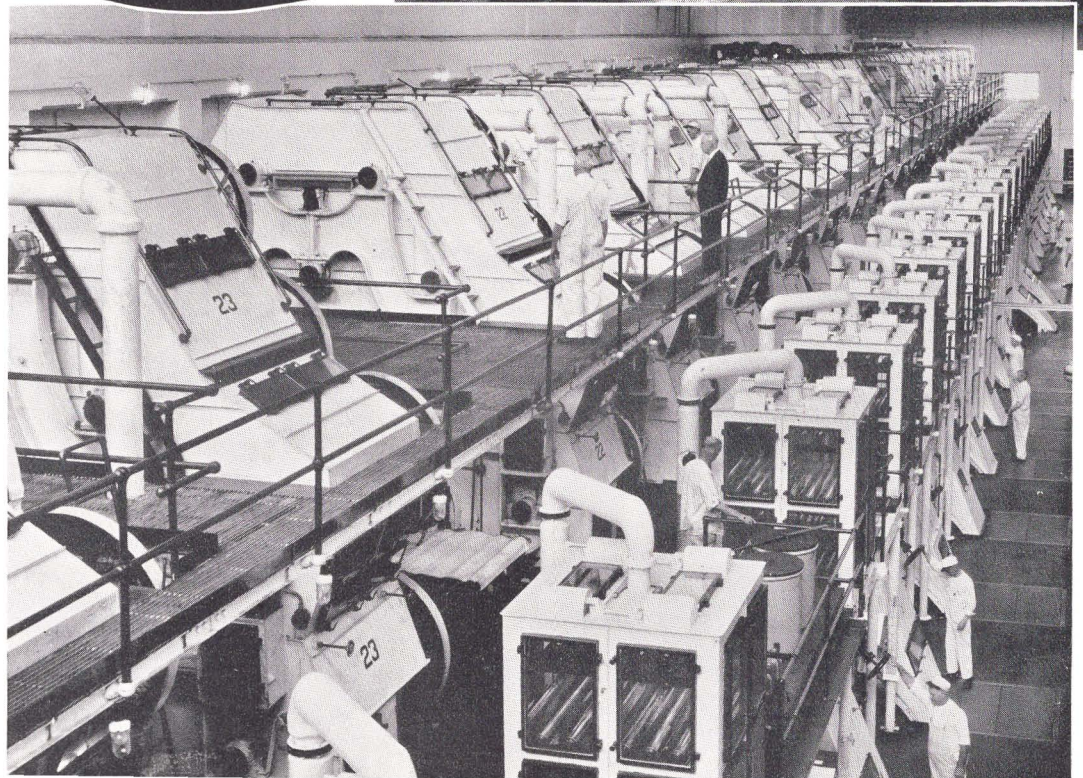
CIRCLE—Mixing “dope”— honey-like fluid that is later to be converted into film.

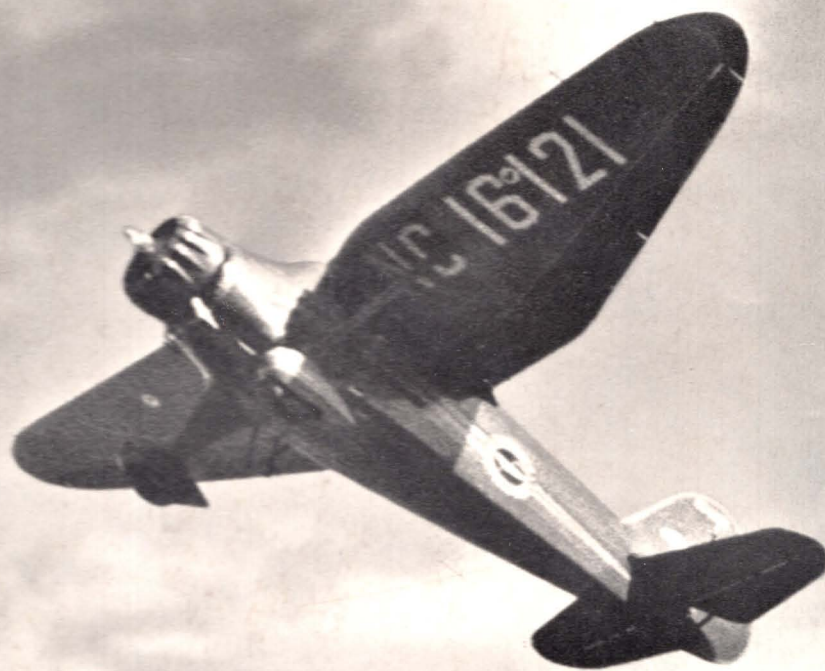


ABOVE—Drying purified cotton linters preparatory to their being used in the making of film base.

LEFT—Evaporating silver nitrate solutions for crystallization.

RIGHT—A battery of film-making machines.





Kodak Bantam Special "still" at close range of a plane traveling nearly 100 miles per hour. 1/500 second at *f*.6.3. Kodak Panatomic Film.