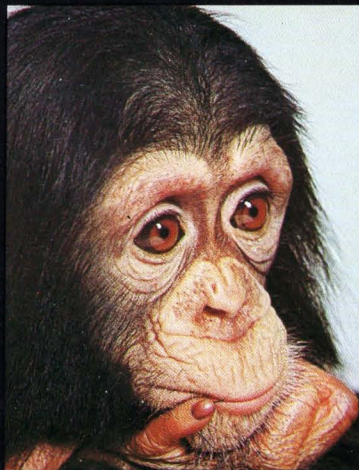
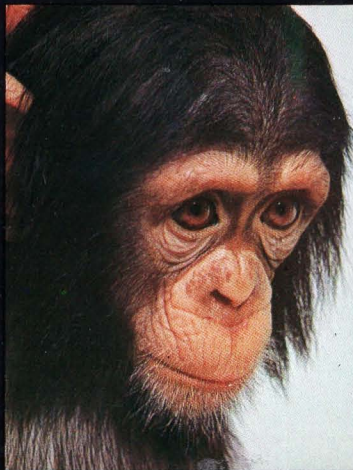




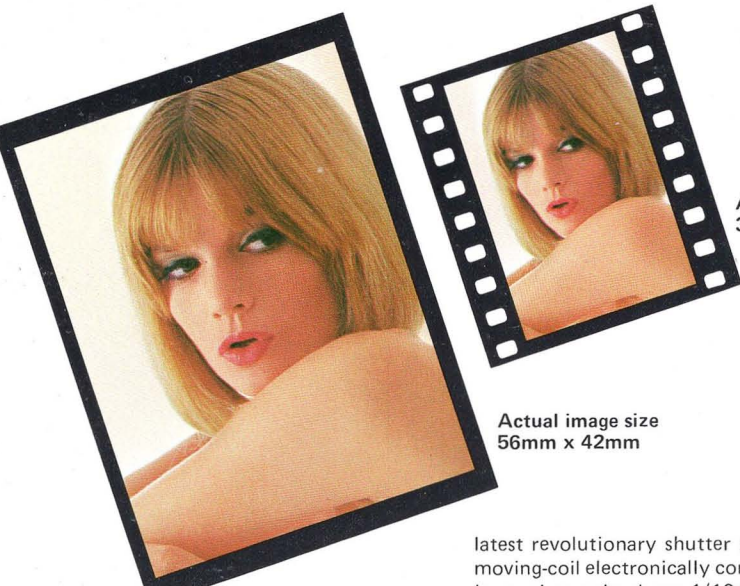
Mamiya

Mo45



Excellent mobility. Compact design. Ideal for active photography.

The Mamiya M645 SLR camera offers greater versatility, with the 6x4.5cm picture format.



Mamiya M645, the versatile 6 x 4.5 cm format single-lens reflex camera for 120 or 220 film use, is a real masterpiece of high precision technology. Newly developed by Mamiya, a traditional manufacturer of professional cameras, the M645 is a new type of single-lens reflex camera for this color photography age.

The Mamiya M645 offers a considerably larger picture format, almost 3 times the size of what a 35mm camera gives. But its compact design and light-weight allow you outstanding mobility.

The moving-coil electronically controlled shutter, exclusive with Mamiya, has high precision and durability which further enhances its reliability. With a wide range of multi-coated lenses and a large variety of accessories, the Mamiya M645 can meet all photographic requirements.

The M645 also offers you a fast handling, easy operation, and sharp pictures that can take a lot of enlarging. It is a camera that opens the door to a new type of photography.

Compact, light-weight, single-lens reflex camera—ideal for active people.

The Mamiya M645 has been designed uniformly and totally as a camera for active photography. While matching a 35mm camera in handling ease and fast shooting, it takes pictures of an optimum size almost three times larger. Its compact design and light weight are in line with modern needs and make this camera highly suitable for active use. You can capture what you see in the bright view finder. Film winding is a one-step action. Mirror shock is virtually eliminated. Many other advanced features make the M645 a total system of photography.

Offers pictures with almost three times more negative area than the 35mm format. An optimum size for enlargement.

The Mamiya M645 offers you an image 6 x 4.5cm, almost 3 times more area than the 35mm format (24 x 36mm). This size alone increases the visual impact. Besides, it is proportionate to the most common print sizes in the length-by-width ratio.

This optimum size for picture composition displays its full effect in color photography.

The unique high precision moving-coil electronically controlled shutter

The Mamiya M645 comes with the

latest revolutionary shutter mechanism, the moving-coil electronically controlled shutter. It requires only about 1/10th the electrical power consumption to function as compared to the conventional electronic shutters. Besides, electrical power consumption is nearly uniform regardless of the shutter speed being used, it greatly extends the life of the battery.

It has been proven in tests that a fresh battery under normal temperature can work the shutter about 100,000 times with either the prism finder or the waist-level finder on the camera. Mamiya's superb technology has achieved this amazing feat.

Dynamically large field of view

With the Mamiya M645's large finder, bright all over its 6 x 4.5cm dimensions, you can compose a picture with clear, bright images through the open-aperture lens. The microprism type (microprism in the center surrounded by the matte area, both usable for focusing) is the standard finder screen. It is freely interchangeable with three other different types of finder screens according to your shooting requirements.

Variety of finders to choose from

The Mamiya M645 is a practical medium-format single-lens reflex camera. You see a parallax-free image in the bright finder through the lens. Depending on your shooting purposes, you can freely choose and exchange the prism finder, PD prism finder for measuring exposure, or the waist-level finder for a large field of view.

* The Waist-level finder is extremely light-weight and compact. With one-step action, you can flick it open or closed. When you lift up the magnifying lens, it forms a sealed box, allowing you to view from directly above the images on the focal glass. Ideal for close-ups, copying, low and high angle pictures, and dim light. The eye-correction magnifier is interchangeable.



- 1 Battery check button
- 2 Exposure counter window
- 3 Multiple exposure lever
- 4 Film advance crank
- 5 Film advance knob
- 6 Mirror lock-up lever
- 7 Alignment dot
- 8 Alignment dot for lens mounting and removal
- 9 Shutter release lock ring
- 10 Shutter release button (in front)
- 11 Shutter release button
- 12 Aperture ring
- 13 Distance scale
- 14 Depth-of-field scale
- 15 Focusing ring
- 16 Synchroflash Terminal
- 17 Memo clip
- 18 Back cover latch
- 19 Shutter speed dial
- 20 Battery check Lamp
- 21 Focusing screen
- 22 Mounting guide pin for finder
- 23 Lens release button



- * The prism finder is ideal for snapshots and action photography. Ideal for fast shooting as it enables you to take pictures with the camera at eye level either in the vertical or horizontal format.
- * PD prism finder for accurate exposure readings. The PD prism finder employs a photodiode exposure meter for open-aperture center-weighted readings.
- (1) Set the PD prism finder on the camera. After setting the ASA indicator properly,

ACCESSORIES



- Focusing Handle
- Automatic Extension Tube Set
- Finder Screen
- No.1 Microprism No.2 Matte
- No.3 Checker No.4 Rengfinder Spot
- Grips Grip Holder
- Deluxe L Grip Holder Pistol Grip
- Film Inserts

New product

Mamiya/Sekor 70mm f/2.8C
Leaf-shutter type lens



SHARP, MULTI-COATED LENSES

decide your desired shutter speed or aperture. The camera automatically functions to give you the optimum exposure.

- (2) The red and the green LED's glow inside the finder to indicate exposure. It is a precise visual indication of proper exposure setting.
- (3) The use of photodiode measures light with a high accuracy even in a poor lighting condition.

Exact film positioning that helps assure the film is perfectly flat.

In the Mamiya M645, many years of experience as a manufacturer of 120/220 roll-film cameras is fully displayed. The unique loading system, which has eliminated the unfavorable effects of slack film surface, assures an extremely precise film position and high level of stability.

Inserts are available for 120 or 220 roll film. You can also carry preloaded spare inserts for speedy film changing.

A full range of multi-coated interchangeable lenses that assure sharp pictures.

Mamiya/Sekor C lenses have an established reputation for excellent color performance, sharpness, superb resolution, and fast operation and are available in a full range from 45mm wide-angle to 500mm telephoto. These lenses are multi-coated, so when taking pictures against the sun or under other unusual lighting conditions, flare and ghost images are minimized.

The lenses are designed in progressive focal lengths to fill your photographic needs.

A variety of accessories for expanding photographic possibilities.

Accessories include the L-shaped grip, pistol grip, waist-level finder for speedy focusing, eye-level prism finder, PD prism finder for accurate exposure readings, and extension tube set for efficient close-ups and reproduction.

A whole line of accessories are available to vastly extend photographic possibilities.

- Mamiya/Sekor 45mm F2.8C
- Mamiya/Sekor 55mm F2.8C
- Mamiya/Sekor 80mm F2.8C
- Mamiya/Sekor 110mm F2.8C
- Mamiya/Sekor 150mm F4C
- Mamiya/Sekor 210mm F4C
- * Mamiya/Sekor 300mm F3.5C
- * Mamiya/Sekor 500mm F5.6C



BHMC

BELL & HOWELL / MAMIYA COMPANY

2201 W. Howard Street, Evanston, Illinois 60202 312/491-6800