

GRAFLEX



THE BEST CAMERA
FOR MOST PEOPLE

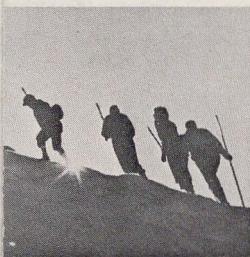
GRAFLEX 22

A CAMERA
THE WHOLE
FAMILY
CAN USE

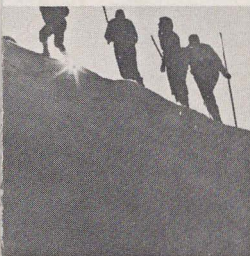
HELPS AVOID THESE COMMON MISTAKES



Out-of-focus pictures result when a camera is improperly focused. With Graflex "22," there's no guesswork. The ground glass shows you whether or not the picture will be sharp.



When a camera is tilted accidentally, you get unsatisfactory pictures like this. The full-size view provided by Graflex "22" helps to prevent accidental tilting keeps your pictures level.



Ever think you were getting the whole picture, only to find part was cut off? It can't happen with Graflex "22" because you see the picture as you'll get it before, during and after it is taken.

GRAFLEX 22

A CAMERA
THE WHOLE
FAMILY
CAN USE

SHOWS YOUR PICTURE
BEFORE YOU TAKE IT

FULL SIZE

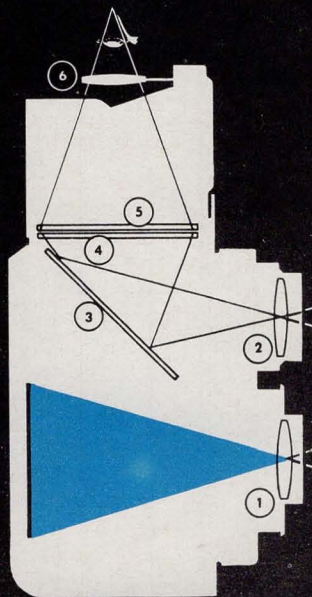


F

eatures

OF THE
GRAFLEX

"22"

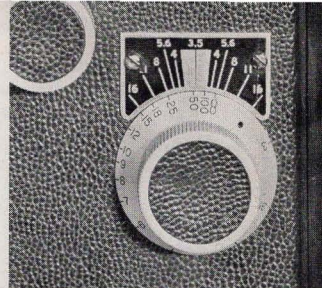


The diagram at the left shows the "inside story" the principle of the twin-lens reflex camera. It is, in effect, two cameras, one above the other. The upper camera shows you your picture the lower one takes it.

The "taking" lens (1) puts the picture on the film. The "viewing" lens (2) throws the image of your subject on the mirror (3) which, in turn, reflects it through the field lens (4), giving it greater brightness before it reaches the ground glass (5). A high powered magnifier (6) permits critical examination of picture sharpness.

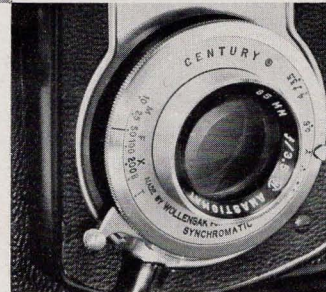


Full size focusing ground glass eliminates guessing at distance and composition. Field lens in combination with f/3.2 viewing lens gives brilliant sharp image for easier, faster focusing, shows the picture just as it will appear on the film.

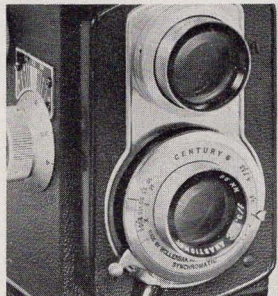
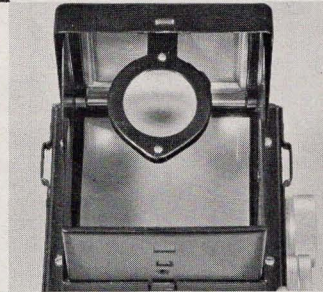


Calibrated focusing knob is on side of camera for quick, easy adjustment, indicates distances 3 feet to infinity for scale focusing, is combined with depth of field scale which shows range of sharp focus at any length and focus setting.

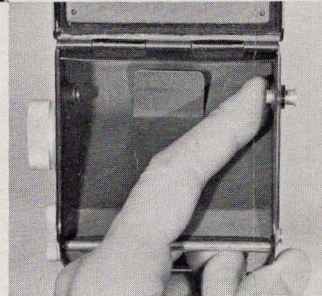
Century synchronomatic M-F-X shutter automatic self-setting type, always ready for use without presetting. Controls conveniently placed for easy reference. Has provision for using a cable release. Factory synchronized for perfect results when using flash lamps.



Self-erecting hood The touch of a lever opens the hood for use of the camera at a moment's notice. Critical focus magnifier and eye level finder, built-in as an integral part of the focusing hood.



Sharp, f/3.5 lens is color-corrected, hard coated and has the desirable 85mm focal length, assuring critical sharpness even in the corners of the picture. It is matched in focal length to the viewing lens for perfect accuracy in focusing.



Push button loading . . . Spool retainers simplify loading, prevent binding of film spools, and assure easy transport of film, hold film spools securely.

New Jen-Flash B-C Flash Unit clips in shoe on side of camera, folds to pocket size, gives perfect flash results, eliminates cords or complication, also fits Stereo-Realist. Versatile Graflite flash equipment may also be used with Graflex "22", serves other cameras as well.



Ever-ready case Made of gray genuine leather, smartly styled. Permits use of camera without removal from case, has locking screw which holds camera securely. Adjustable shoulder-neck strap may also be used with camera without case.



PICTURE SIZE—2 1/4" x 2 1/4". Square shape picture eliminates turning camera for vertical shots. Uses all Kodak, Ansco or other 120-size film. Twelve exposures to roll. Also accepts Ansco color film, Kodak Ektachrome and Kodacolor C-120 for fine color work.

CAMERA SIZE—5 1/2" high, 3 3/4" wide, 4 1/4" deep. Compact . . . light . . . easy to hold and carry.

SHUTTER—Century X-F-M synchronomatic, self-setting type, with speeds 1/10, 1/25, 1/50, 1/100, 1/200, T and B. Factory-synchronized, has internal wiring and shoe on side of camera for accessory B-C flash unit. Shutter speeds are color-coded to indicate proper setting with any flash lamp.

Specifications

LENSES—85mm Graflex f/3.5, coated, color-corrected taking lens. Perfect focal length for full corner-to-corner sharpness and true perspective. Viewing lens is Graflex f/3.2 for brighter image and easier focusing, matched in focal length to the taking lens.

CONSTRUCTION—Metal body for maximum strength, rigidity and durability. Finished in chrome and eggshell black with choice of conventional black grain covering, or exciting new silver gray.

LENS SHADE-ADAPTER RING—Designed especially for Graflex "22." Supplied in leather case with provision for two Series V filters. Note: other filter holders for Graflex "22" require use of Series VI filters.

SO MUCH CAMERA

Graflex "22" Specifications—film size $2\frac{1}{4} \times 2\frac{1}{4}$ inches; 12 black-and-white or color negatives, or 12 color transparencies (9 with Ansco color) on standard 120 roll film; 85 mm. coated, color-corrected Graflex f3.5 lens; self-setting Century shutter, with speeds $1/10$ — $1/25$ — $1/50$ — $1/100$ — $1/200$ T and B, factory synchronized; M-F-X synchronization, with color coded settings; accessory B-C flash unit fits shoe on side of camera; other features include: push button loading, self-erecting hood with critical focus magnifier, field lens under ground glass, balanced design and smart modern styling, metal construction, depth-of-field chart, gray genuine leather eveready-type case.

SO LITTLE COST

CAT. NO.

CL-8160	Graflex "22" with black grain covering	\$89.50
CL-8163	Graflex "22" with silver gray covering	89.50
8060	Graflex "22" Double Lens Cover	1.50
8011	Graflex "22" Gray Leather Eveready Case	8.50
8043	Graflex "22" Jen Flash B-C Unit Model SR	14.95
8082	Combination Lens Shade-Adapter Ring with Leather Case	3.20

KRETSCHMERS

*All That Is Fine In Photo
Equipment*

315 South 17th Street JA. 5335
Omaha 2, Nebraska