

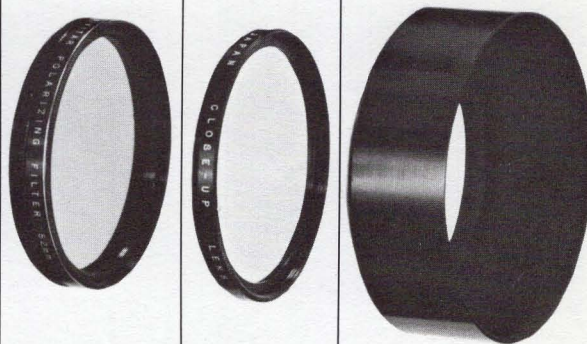
Vivitar Filters for Color and Black and White Film

All photographs are made up of light reflected from the subject. Since this light is usually colored, sometimes a filter is essential to the effective rendition of the subject in the final print. This is true in both black and white and color photography.

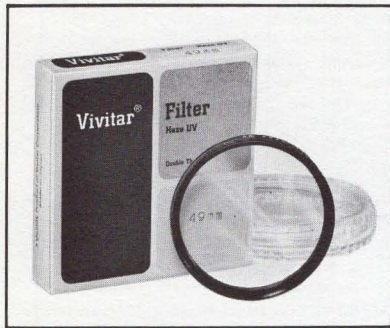
Filters for color photography are of two general types, correction filters and conversion filters. The former are used to correct excessive redishness or blueishness when the light source is other than that for which the film is balanced. Conversion filters "convert" the light for use with film normally intended for use under different lighting conditions.

Filters for black and white photography are used to control contrast and the rendition of colors as tones of grey in the final prints. Thus, a yellow filter (K-2) renders blue skies as a darker grey than they would be in a photo made without the filter. Orange (O-2) and Red (25) filters act like the yellow filters, but with increased effect, the red producing nearly black skies in a print.

All Vivitar filters are made of precision-ground, high quality optical glass. They are mounted in double-threaded metal rims for use in combinations, or with other lens accessories. All filters are coated to minimize stray light reflections and are correctly balanced for the particular values indicated in their designation.



Vivitar Filters for Use with Color and Black and White Film



Vivitar Filters for Color Photography

Skylight

Sizes Available.
27mm to 72mm and
Series V through VIII

Factors: 0. Requires no change in exposure. Reduces blue and adds warmth to outdoor scenes. Reduces haze. Also used to lighten flesh tones when taking portraits in open shade.

85A

Sizes Available:
40.5mm to 62mm and
Series V through VIII

Factor: 1.5 (.75 stop increase in exposure). Conversion filter. Used with type A color film when photographing or filming in daylight. Converts sunlight to 3400°K, which is the correct balance for Type A film under daylight conditions.

85B

Sizes Available.
40.5mm to 62mm and
Series V through VIII

Factor: 1.5 (.75 stop increase in exposure). Used with Type B color film when photographing or filming in daylight. Converts sunlight to 3200°K, which is the correct balance for Type B film under daylight conditions.

80B

Sizes Available.
40.5mm to 62mm and
Series V through VIII

Factor: 4 (2 stop increase in exposure). Conversion filter. Use with daylight type color films when filming or photographing with 3400°K Photoflood lamps. (Daylight type films are balanced for 5500°K).

82A

Sizes Available.
40.5mm to 62mm and
Series V through VIII

Factor: 0. Requires no change in exposure. Use to convert 3200°K light source for filming with Type A films. (Correct balance for Type A films is 3400°K).



Vivitar Filters for Black and White Photography

K-2 (Medium Yellow)

Sizes Available.
27mm to 72mm and
Series V through VIII

Factors: Daylight 2 (1 stop increase in exposure), Tungsten 1.5 (.75 stop increase in exposure). Absorbs blue. Darkens sky and water. Often used for yachting and marine scenes because it provides contrast between the sails, clouds, and blue sky. May be used with all types of black and white film.

O-2 (Medium Orange)

Sizes Available.
27mm to 72mm and
Series V through VIII

Factors: Daylight 3 (1.75 stop increase in exposure) Tungsten 3.5 (1.75 stop increase in exposure). Absorbs blue to a greater degree than K-2 filter and provides a more dramatic effect when photographing foliage or clouds against a blue sky. Use with panchromatic films only.

X-1 (Light Green)

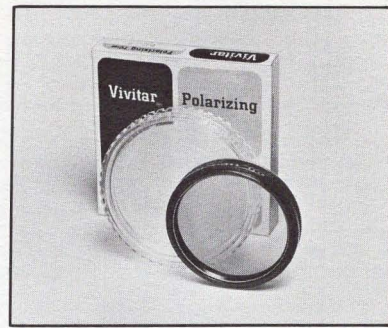
Sizes Available.
27mm to 72mm and
Series V through VIII

Factors: Daylight 4 (2 stop increase in exposure) Tungsten 3 (1.5 stop increase in exposure). Absorbs ultra-violet, violet, some blue and some red. Ideal filter for outdoor portraits and for flower blossoms, landscapes and other multi-colored subjects. Also used as a correction filter for tungsten light. Use with panchromatic film only.

25 (Red)

Sizes Available.
27mm to 72mm and
Series V through VIII

Factors: Daylight 8 (4 stop increase in exposure), Tungsten 4 (2 stop increase in exposure). Absorbs ultra-violet, blue, and green. Provides dramatic contrast. Useful in architectural photography, as buildings are dramatized and texture of materials is enhanced. Use with panchromatic films only.



Vivitar Filters for Use with Color and Black and White Film

Polarizing Filter

Sizes Available:
27mm to 72mm and
Series V through VIII

Factor: 2 to 4 (Variable) (1 to 2 stop increase in exposure). Neutral in color, a polarizing filter absorbs a part of all visible colors, and transmits plane-polarized light. With a polarizing filter, the photographer can minimize or eliminate reflections from the surfaces of water, show windows, furniture, etc. This filter is the only one which will darken the blue sky in color photographs without altering the color or tone in the rest of the scene.

UV-Haze

Sizes Available.
27mm to 72mm and
Series V through VIII

Factor: 0. Requires no change in exposure. Reduces excess blue. Penetrates haze. Absorbs ultra-violet. Ideal for marine, mountain and aerial photographs.

Neutral Density Filters

A neutral density filter differs from other filters in that it partially absorbs all visible colors equally without changing the color of the light it transmits. Neutral gray in color, these filters are used when photographing a bright scene in sunlight with fast color or black and white film, where the combination of the fastest shutter speed and the smallest aperture is not enough to prevent over-exposure.

2X-ND Neutral Density

Sizes Available.
40.5mm to 62mm and
Series V through VIII

Factor: 2 (1 stop increase in exposure). This filter transmits 50% of light reflected by the subject.

4X-ND Neutral Density

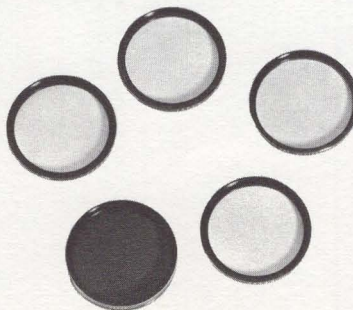
Sizes Available.
40.5mm to 62mm and
Series V through VIII

Factor: 4 (2 stop increase in exposure). This filter transmits 25% of light reflected by subject.

Vivitar Filters for Use with Color and Black and White Film

Skylight Filters			85A—Color Correction Filters			85B—Color Correction Filters			80B—Color Correction Filters			82A—Color Correction Filters			K-2 (Medium Yellow)		
Size	Stock No.		Stock No.			Stock No.			Stock No.			Stock No.			Stock No.		Size
27mm	22-3034	3.00													22-5005	3.00	27mm
35.5mm	22-3078	3.50													22-5072	3.50	35.5mm
40.5mm	22-3115	3.50	22-9726	3.50	22-9003	3.50	22-7113	3.50	22-0044	3.50	22-5153	3.50	40.5mm				40.5mm
43mm	22-3148	4.00	22-9737	4.00	22-9058	4.00	22-7179	4.00	22-0136	4.00	22-5234	4.00	43mm				43mm
46mm	22-3171	5.50	22-9759	5.50	22-9117	5.50	22-7227	5.50	22-0169	5.50	22-5289	5.50	46mm				46mm
48mm	22-3193	5.50	22-9760	5.50	22-9151	5.50	22-7249	5.50	22-0192	5.50	22-5326	5.50	48mm				48mm
49mm	22-3218	5.50	22-9771	5.50	22-9195	5.50	22-7250	5.50	22-0239	5.50	22-5371	5.50	49mm				49mm
52mm	22-3252	6.00	22-9782	6.00	22-9232	6.00	22-7319	6.00	22-0376	6.00	22-5441	6.00	52mm				52mm
55mm	22-3296	6.00	22-9793	6.00	22-9313	6.00	22-7364	6.00	22-0457	6.00	22-5496	6.00	55mm				55mm
58mm	22-3344	7.50	22-9807	7.50	22-9368	7.50	22-7412	7.50	22-0516	7.50	22-5511	7.50	58mm				58mm
62mm	22-3366	9.50	22-9818	9.50	22-9416	9.50	22-7456	9.50	22-0572	9.50	22-5588	9.50	62mm				62mm
67mm	22-3425	12.00									22-5636	12.00	67mm				67mm
72mm	22-3481	15.50									22-5670	15.50	72mm				72mm
Series V	22-3539	3.00	22-9852	3.00	22-9450	3.00	22-7526	3.00	22-0631	3.00	22-5717	3.00	Series V				Series V
Series VI	22-3757	4.50	22-9863	4.50	22-9531	4.50	22-7663	4.50	22-0697	4.50	22-5854	4.50	Series VI				Series VI
Series VII	22-3791	6.00	22-9874	6.00	22-9564	6.00	22-7733	6.00	22-0723	6.00	22-5902	6.00	Series VII				Series VII
Series VIII	22-3883	10.00	22-9885	10.00	22-9689	10.00	22-7799	10.00	22-0745	10.00	22-5968	10.00	Series VIII				Series VIII

O-2 (Medium Orange)			X-1 (Light Green)			25 (Red)			Polarizing Filters			UV-Haze Filters			2X-ND Neutral Density			4X-ND Neutral Density		
Size	Stock No.		Stock No.			Stock No.			Stock No.			Stock No.			Stock No.			Stock No.		Size
27mm	22-1627	3.00	22-2037	3.00	22-8039	3.00	22-6002	5.50	22-4020	3.00										27mm
35.5mm	22-1650	3.50	22-2071	3.50	22-8095	3.50	22-6035	6.50	22-4053	3.50										35.5mm
40.5mm	22-1672	3.50	22-2118	3.50	22-8110	3.50	22-6079	8.50	22-4086	3.50	22-1063	3.50	22-1362	3.50	40.5mm					40.5mm
43mm	22-1694	4.00	22-2163	4.00	22-8165	4.00	22-6091	8.50	22-4112	4.00	22-1074	4.00	22-1373	4.00	43mm					43mm
46mm	22-1731	5.50	22-2222	5.50	22-8235	5.50	22-6150	9.50	22-4134	5.50	22-1085	5.50	22-1384	5.50	46mm					46mm
48mm	22-1753	5.50	22-2244	5.50	22-8257	5.50	22-6183	10.50	22-4167	5.50	22-1096	5.50	22-1395	5.50	48mm					48mm
49mm	22-1775	5.50	22-2277	5.50	22-8280	5.50	22-6219	10.50	22-4178	5.50	22-1100	5.50	22-1409	5.50	49mm					49mm
52mm	22-1801	6.00	22-2358	6.00	22-8316	6.00	22-6242	11.50	22-4215	6.00	22-1122	6.00	22-1421	6.00	52mm					52mm
55mm	22-1834	6.00	22-2417	6.00	22-8372	6.00	22-6297	12.50	22-4237	6.00	22-1155	6.00	22-1454	6.00	55mm					55mm
58mm	22-1867	7.50	22-2439	7.50	22-8420	7.50	22-6334	13.50	22-4259	7.50	22-1188	7.50	22-1487	7.50	58mm					58mm
62mm	22-1889	9.50	22-2554	9.50	22-8501	9.50	22-6356	15.00	22-4282	9.50	22-1199	9.50	22-1498	9.50	62mm					62mm
67mm	22-1904	12.00	22-2598	12.00	22-8556	12.00	22-6415	21.00	22-4307	12.00					67mm					67mm
72mm	22-1926	15.50	22-2635	15.50	22-8578	15.50	22-6459	25.00	22-4330	15.50					72mm					72mm
Series V	22-1959	3.00	22-2668	3.00	22-8615	3.00	22-6518	6.50	22-4374	3.00	22-1225	3.00	22-1524	3.00	Series V					Series V
Series VI	22-1960	4.50	22-2705	4.50	22-8682	4.50	22-6552	9.50	22-4396	4.50	22-1236	4.50	22-1535	4.50	Series VI					Series VI
Series VII	22-1971	6.00	22-2842	6.00	22-8741	6.00	22-6585	12.50	22-4444	6.00	22-1247	6.00	22-1546	6.00	Series VII					Series VII
Series VIII	22-1982	10.00	22-2912	10.00	22-8800	10.00	22-6611	19.00	22-4488	10.00	22-1258	10.00	22-1557	10.00	Series VIII					Series VIII



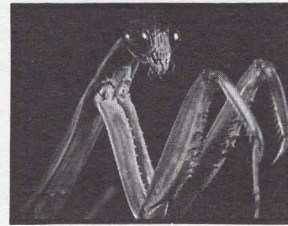
Vivitar Close-Up Lens Sets

Vivitar close-up lens sets are designed for use in conjunction with normal and telephoto lenses. They allow the photographer to move closer to the subject than the minimum focusing distance of the lens.

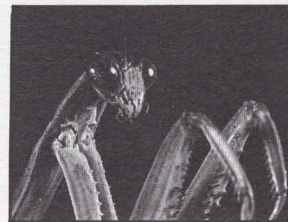
Available in a set of 3 lenses (1 each of +1, +2, and +3 diopters). May be used singly or in combination, providing a magnification from +1 to +6 diopters. Constructed of high quality coated optical glass and bound in double threaded metal mounts. Available in standard thread sizes from 27mm to 72mm and from Series V through Series VIII. Also, close-up sets available in bayonet mounts to fit most twin

lens reflex cameras. Each set consists of 2 diopter lenses, one for use with the viewing lens and the other for use with the taking lens. Three individual sets are available, offering +1, +2, and +3 diopters.

Also available are fractional diopter close-up sets for use with telephoto lenses. Each set consists of 2 diopter lenses ($\frac{1}{2}$ and $\frac{1}{4}$ diopters). Fractional diopter close-up sets are available in standard thread sizes from 46mm to 72mm and from Series VI through Series VIII. All close-up lens sets are supplied complete with black leather compartment case.



50mm (normal lens)



+1



+3 and +1 = +4



+2



+3 and +2 = +5



+3



+1, +2, and +3 = +6

Vivitar
Close-Up
Lens Sets

Vivitar
Fractional Diopter
Close-Up Lens Sets
for Telephoto Lenses

Size	Stock No.		Stock No.	Size
27mm	24-1016	7.95		27mm
35.5mm	24-1049	8.95		35.5mm
40.5mm	24-1072	8.95		40.5mm
43mm	24-1108	10.95		43mm
46mm	24-1131	10.95	24-1496	7.95 46mm
48mm	24-1153	12.95		48mm
49mm	24-1164	12.95	24-1544	9.95 49mm
52mm	24-1197	13.95	24-1566	11.95 52mm
55mm	24-1223	14.95	24-1599	12.95 55mm
58mm	24-1256	16.95	24-1614	14.95 58mm
62mm	24-1289	24.95	24-1647	19.95 62mm
67mm	24-1315	26.95	24-1681	21.95 67mm
72mm	24-1348	29.95	24-1706	24.95 72mm
Series V	24-1371	8.95		Series V
Series VI	24-1407	10.95	24-1739	7.95 Series VI
Series VII	24-1430	12.95	24-1740	10.95 Series VII
Series VIII	24-1463	25.95	24-1751	21.95 Series VIII

Vivitar Close-Up Lens Sets for
Rollei Type Cameras

	Stock No.	
Model B-30 +1	24-0019	6.50
Model B-30 +2	24-0020	6.50
Model B-30 +3	24-0031	6.50
Model B-36 +1	24-0112	8.50
Model B-36 +2	24-0123	8.50
Model B-36 +3	24-0134	8.50

Vivitar Lens Hoods

Vivitar Lens Hoods are designed to provide protection against extraneous light which may strike the lens and cause unwanted glare. Small baffling surfaces in each lens hood absorb this light and enhance the crispness of the photographic image.

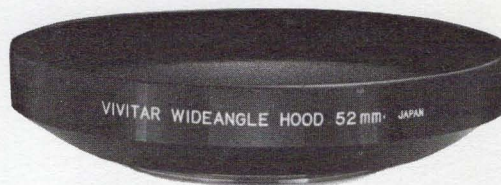
Standard Lens Hoods

Lightweight metal with anodized black finish. Standard thread sizes from 27mm to 72mm and in Series V through VIII.



Super Wide Lens Hoods

Same material as standard lens hood, but designed for use with wide angle lenses. Available in standard thread sizes from 40.5mm to 62mm.



Standard Lens Hoods **Super Wide Lens Hoods** **Collapsible Lens Hoods**

Size	Stock No.		Stock No.		Stock No.		Size
27mm	24-4268	1.80					27mm
35.5mm	24-4291	2.00					35.5mm
40.5mm	24-4327	2.30	24-4028	4.80			40.5mm
43mm	24-4350	2.30	24-4051	4.80			43mm
46mm	24-4383	2.30	24-4084	4.80	24-3618	2.50	46mm
48mm	24-4408	2.50					48mm
49mm	24-4419	2.50	24-4110	5.20	24-3630	2.50	49mm
52mm	24-4442	2.80	24-4143	5.20	24-3652	2.50	52mm
55mm	24-4475	2.80	24-4176	5.20	24-3674	2.50	55mm
58mm	24-4501	2.80	24-4202	5.60	24-3685	2.50	58mm
62mm	24-4534	3.90	24-4235	5.60			62mm
67mm	24-4567	4.50					67mm
72mm	24-4590	4.50					72mm
Series V	24-4626	1.80					Series V
Series VI	24-4659	2.30					Series VI
Series VII	24-4682	2.80					Series VII
Series VIII	24-4718	3.90					Series VIII

Collapsible Lens Hoods

Soft rubber bonded to precision-threaded metal mounting ring. Collapses for storing while on lens. Available in thread sizes from 46mm to 58mm.



Vivitar Automatic 2x Tele Converters for 35mm SLR Cameras

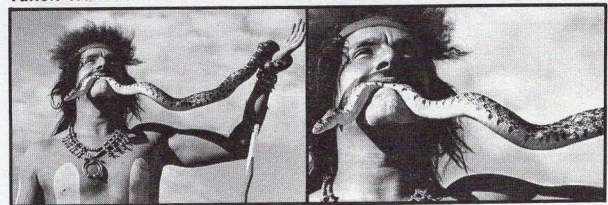
Vivitar Auto 2X Tele Converters, designed for use with 35mm SLR cameras to double the focal length of any normal or telephoto lens. Each Auto Tele Converter provides automatic diaphragm coupling between camera and lens.

Features :

- Fully coated - 4 element construction
- Design to match finish and style of the camera.
- Through-the-lens meter coupling
- Built-in aperture correction dial for non Behind-the-lens SLR cameras providing automatic f stop calculations.
- 5 year guarantee
- Fitted leather case included



Taken with 135mm Lens
Taken with 135mm Lens and 2X Auto Tele-Converter



Lens Mounts Available	Model No.	Stock No.	
Mamiya/Sekor, Pentax	2X-1	24-7214	18.00
Exakta	2X-2	24-7203	25.00
Nikon F, Nikkorex F, and Nikkormat FT	2X-3	24-7247	25.00
Canon Pellix, FX, FP, FT, TL and all QL's	2X-4	24-7225	25.00

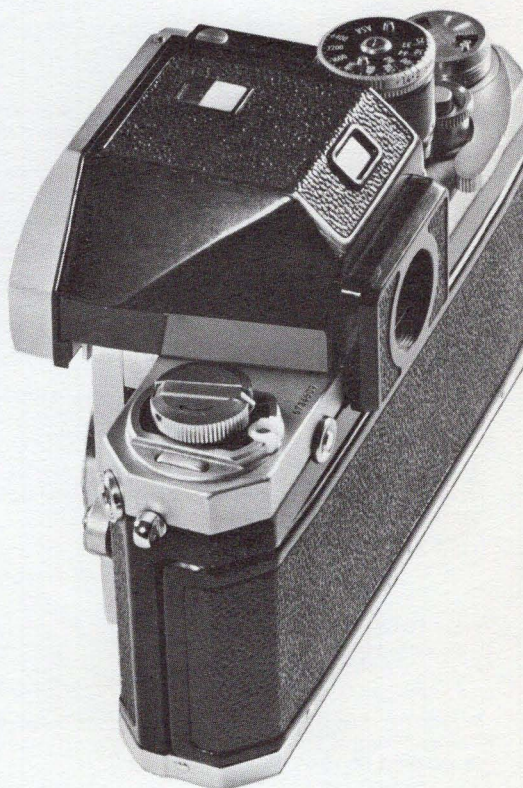
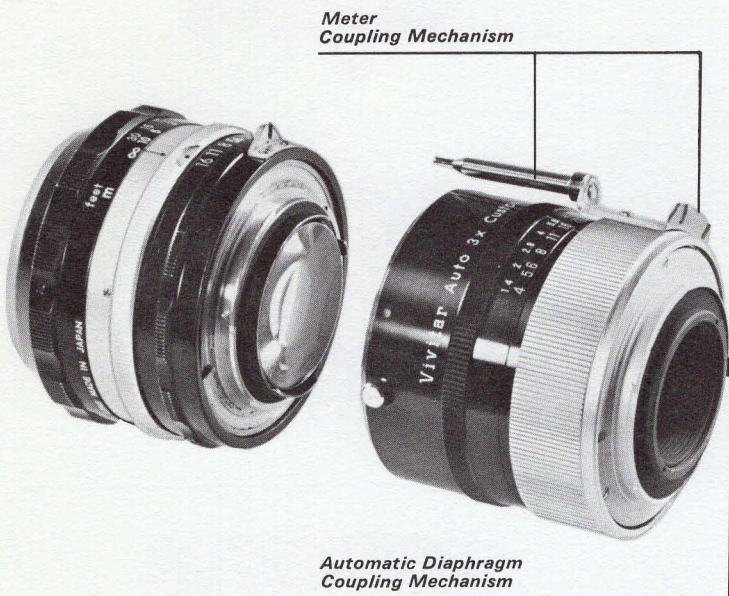
Lens Mounts Available	Model No.	Stock No.	
Minolta SRT and SR	2X-5	24-7236	25.00
Miranda Sensurex	2X-6	24-7270	28.00
Olympus Pen F, FT and FV	2X-12	24-7269	25.00
Topcon Super D and D-1	2X-15	24-7258	25.00
Topcon Auto 100	2X-17	24-7281	28.00

Vivitar Automatic 3X Tele Converters for 35mm SLR Cameras

Vivitar Auto 3X Tele Converters, designed for use with 35mm SLR cameras to triple the focal length of any normal or telephoto lens. Each Auto Tele Converter provides automatic diaphragm coupling between camera and lens.

Features:

- Fully coated-4 element construction
- Designed to match finish and style of the camera
- Through-the-lens meter coupling
- Built-in aperture correction dial for non behind-the-lens SLR cameras providing automatic f stop calculations
- 5 year guarantee
- Fitted leather case included



Taken with 135mm Lens



Taken with 135mm Lens and 3X Auto Tele Converter



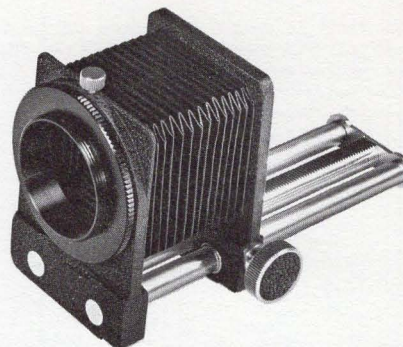
Lens Mounts Available	Model No.	Stock No	
Mamiya/Sekor, Pentax	3X-1	24-8211	24.00
Nikon F, Nikkorex F, and Nikkormat FT	3X-3	24-8233	32.00

Lens Mounts Available	Model No.	Stock No	
Canon Pellix, FX, FP, FT, TL and all QL's	3X-4	24-8244	32.00
Minolta SRT and SR	3X-5	24-8255	32.00

Vivitar Lens Accessories

Vivitar Triple Track Bellows Attachment for Mamiya/Sekor—Pentax Mount

Combining stability with extreme versatility, the Vivitar Triple Track Bellows offers continuous lens extensions through a great focusing range. The bellows features backlash free rack and pinion focusing. An engraved scale shows actual bellows extension in millimeters, actual magnification, and correct exposure factor.



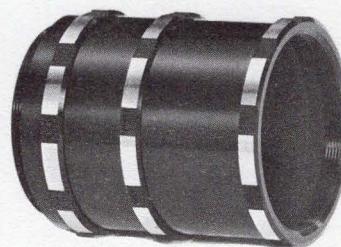
Vivitar Triple Track Bellows Attachment for Mamiya/Sekor—Pentax Mount

Model No.	Stock No.
-----------	-----------

TTB-1	24-5601	29.00
-------	---------	-------

Vivitar Automatic Extension Tube Set for Mamiya/Sekor-Pentax Mount

Vivitar Automatic Extension Tubes are used for extreme close-up or macro photography and couple with automatic diaphragm control of camera and normal lens. One set consists of three separate tubes which can be used in various combinations.



Model No.	Stock No.
-----------	-----------

Vivitar Automatic Extension Tube Set for Mamiya/Sekor-Pentax Mount (3 piece set)

AET 1	24-6239	10.00
-------	---------	-------

Vivitar Manual Extension Tube Set for Mamiya/Sekor—Pentax Mount

Vivitar Manual Extension Tube Sets are used for extreme close-up or macro photography in conjunction with normal lenses. One set consists of three separate tubes.



Model No.	Stock No.
-----------	-----------

Vivitar Manual Extension Tube Set for Mamiya/Sekor—Pentax Mount (3 piece set)

MET-1	24-6099	6.00
-------	---------	------

Vivitar Manual Extension Tube Set for Exakta Mount

Vivitar Manual Extension Tube Sets are used for extreme close-up or macro photography in conjunction with normal lens. One set consists of five separate tubes. The #1 and #5 tubes have bayonet mounts to fit the camera body and normal lens. The intervening threaded tubes can be built up into nine different lengths to permit photographing a field size as small as .7 x 1.0 inch.



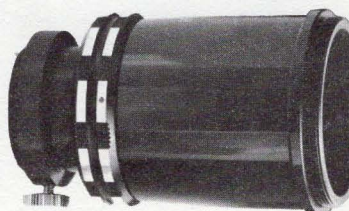
Model No.	Stock No.
-----------	-----------

Vivitar Manual Extension Tube Set for Exakta Mount (5 piece set)

MET-2	24-6158	9.00
-------	---------	------

Vivitar Microscope Adapter

A versatile unit for connecting most 35mm SLR cameras to a microscope. One section is threaded for standard "compatible T" adapters (not included) which connect directly to the camera body. The other end fits into the ocular adapter tube section of the microscope.



Model No.	Stock No.
-----------	-----------

TMA	24-5209	10.00
-----	---------	-------