

CODE NO. 3-30711-21
ITEM Canon AZ 518SV w/lens 9.5-47.5mm f/1.8 in carrying case

Canon SUPER 8 AUTO ZOOM 518 SV



Fun Filming from a Solid Super 8



SPECIFICATIONS

- **Type:** 8mm movie camera using Super 8 film cartridges
- **Picture Size:** 5.4x4.0mm
- **Lens:** 9.5-47.5mm f/1.8 zoom with 5:1 zoom ratio; 14 elements in 11 groups Spectra Coating; inner diameter 48mm, outer diameter 50mm; zooming range can be extended to super-wide-angle (6.2-31mm) with optional Wide-Converter 0.65x, and to super-telephoto (15.6-78mm) with Tele-Converter 1.6x.
- **Viewfinder:** single-lens reflex type; contains exposure indicator f/stop scale, over/under exposure warning marks, microprism rangefinder and film-finish warning marks; eyepiece adjusts from -3 to +1 diopters
- **EE Mechanism:** through-the-lens metering using CdS photocell with Servo EE mechanism; automatic aperture setting coupled to film speed and filming speed
- **Light Measuring Range:** between ASA 400, f/1.8, 18 fps and ASA 16, f/32, "SLOW MOTION"
- **Film Speed:** automatically set by inserting film cartridge tungsten-type film: ASA 25-400 daylight-type film: ASA 16-250
- **CCA Filter:** Built in; corrects color of tungsten light film when used in daylight; automatically cancelled on insertion of daylight-type film, installation of exclusive movie light bar or manually by inserting the filter cancellation key.
- **Filming Speeds:** 18fps, 24fps, "SLOW MOTION" (approx. 36 fps) and single frame
- **Shutter Lock Dial:** for safety lock, running and running lock/remote control positions
- **Manual Aperture Control:** possible by releasing the EE mechanism; fades possible with the aperture control ring
- **Power System:** film drive and power zooming operated by two micromotors; entire zooming range is covered in approx. six seconds
- **Power Source:** four 1.5V penlight (AA) batteries in trigger grip; for film drive, power zooming and metering; sufficient power for 10 cartridges of film at normal temperatures; built-in battery checker
- **Manual Zooming:** performed by manual zooming lever; angle of rotation is 100°
- **Footage Counter:** Automatically resets when the cartridge is removed.
- **Film Transport Indicator:** for checking film advancement
- **Release Sockets:** for single-frame, remote control and cable release
- **Trigger Grip:** fixed type, housing batteries
- **Size:** 212x193.5x60.5mm (8 $\frac{1}{8}$ "x7 $\frac{3}{8}$ "x2 $\frac{1}{8}$ "')
- **Weight:** 1,200 g (2 lbs. 10 $\frac{3}{8}$ oz.) With battery

SELLING POINTS

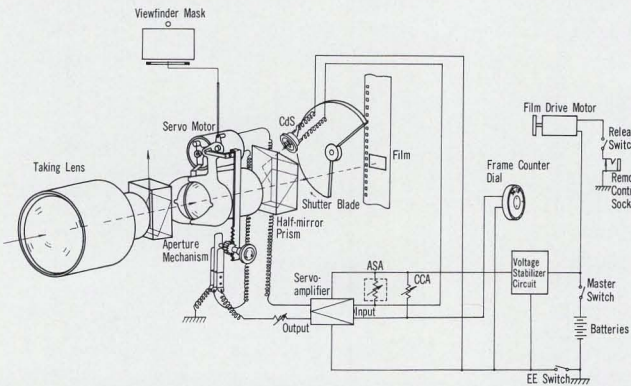


FAST, SHARP ZOOM LENS HAS OPTIONAL EXTENDED ZOOM RANGE

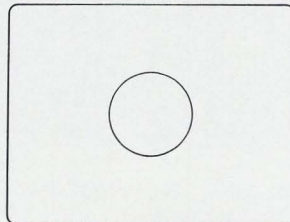
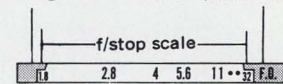
- a. The sharp, contrasty Canon Spectra Coated f/1.8 zoom lens has a zoom ratio of 5:1 (9.5-47.5mm). This long zoom range is great for almost any application. However should the user wish even greater flexibility, there are optional converters available which can extend the zoom range to: from 6.2 31mm with the Wide-Converter and from 15.6 78mm with the Tele-Converter

PRECISE AUTO EXPOSURE WITH THROUGH-THE-LENS SERVO EE METER

- a. No matter how slight the change in light while filming, the AZ 518SV compensates for it automatically with its through-the-lens Servo EE metering system. It assures perfect exposures under almost any conditions.



Under-exposure warning mark Over-exposure warning mark (Fade-Out Position)



● Film-finish warning indicator

FULL VIEWFINDER INFORMATION

- a. Viewfinder information includes f/stop scale, over/under-exposure warning marks and continuous monitoring of the aperture in use.
- b. A film-end warning shows the user when two feet of film remain in the camera. This means no chances of film run-out in the middle of a "take"

MANUAL APERTURE OPERATION FOR SPECIAL APPLICATIONS

- a. When extremely high contrast is a problem, the automatic EE system can be overridden, and manual exposure control may be performed.
- b. Because the aperture may be completely closed, fade-ins and fade-outs are easy, even for the novice filmmaker



WIDE SELECTION OF FILMING SPEEDS

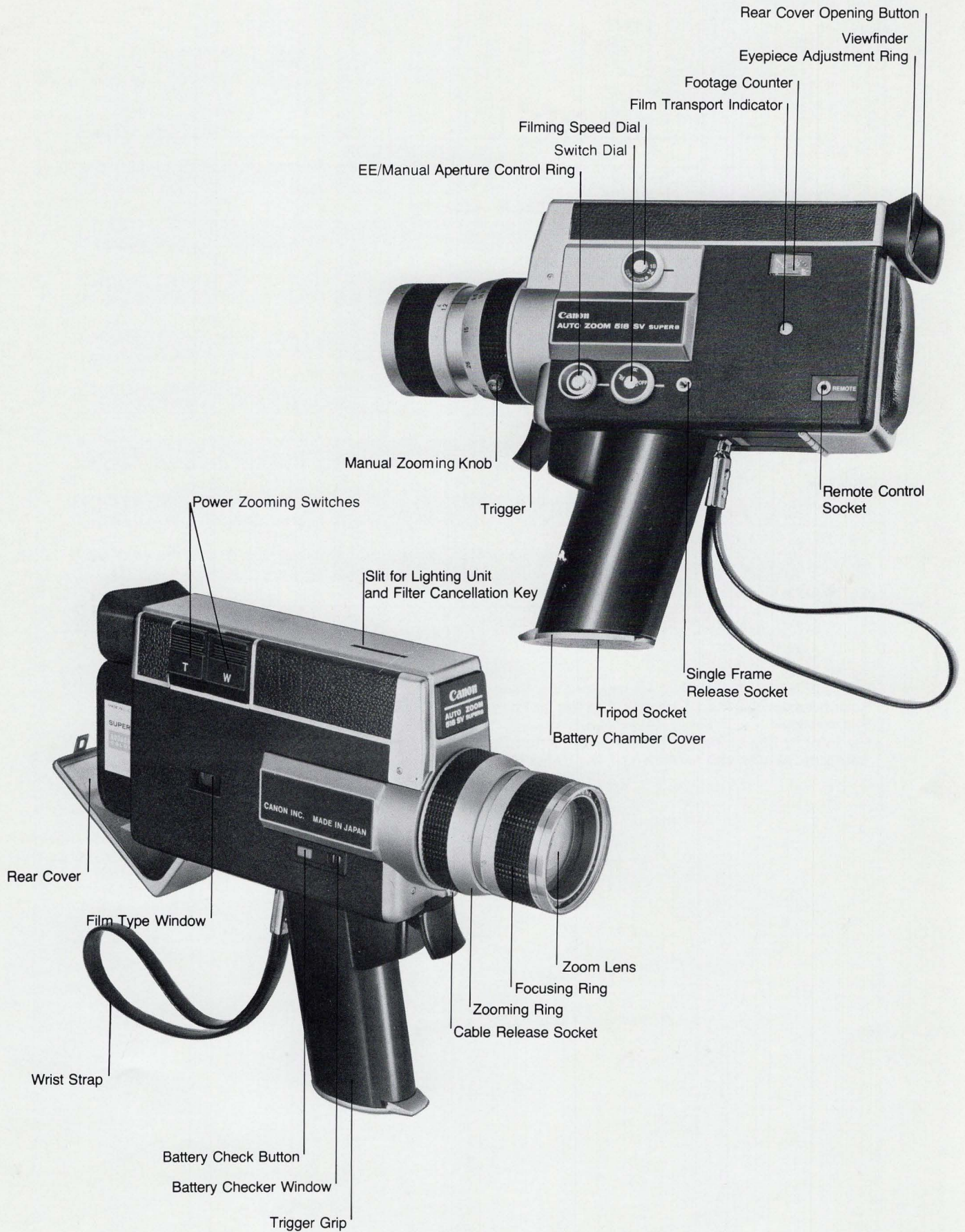
- a. Normal shooting is at 18fps, and shooting for sound synchronization is at 24fps. Slow motion filming is done at 36fps, and single-frame shooting, for animation or "time lapse" photography is easy to perform. Slow-motion is ideal for action analysis, or for slowing down fast-moving subject matter



SINGLE POWER SOURCE FOR DEPENDABILITY

- a. Four penlight batteries supply all the power to run the micromotors which control zooming and film run. This prevents a deterioration of performance during extended filming, until battery life is completely gone.

NOMENCLATURE



ACCESSORIES

CODE NO.	DESCRIPTION
5-43313-21	C-8 Tele Converter Lens 1.6X for AZ518 SV
5-43551-21	C-8 Wide Converter Lens 0.65X for AZ518 SV
5-43252-00	C-8 Close Up Lens 48mm 450
5-43332-00	C-8 Close Up Lens 48mm 240
5-22041-01	Remote Switch 3
5-22051-00	Remote Switch 60
5-39111-00	Chest Pod
5-63061-00	Release 30
5-63062-00	Release 50
4-20601-20	Copystand 4
33-7553	Finder Cover 5
39-9889	Filter Cancellation Key for AZ518 SV
4-60791-00	Carrying Case for AZ518 SV
4-45007-01	Lens Hood S-50 in Case
49-1001	Lens Cap 50mm (metal)
4-10486-21	Cine Projector S-400

PLEASE NOTE: For further information on Canon Super-8 accessories, please refer to the last page in this section.

For information on filters available for Canon Super 8 cameras, please see section 2 of the Sales Guide.