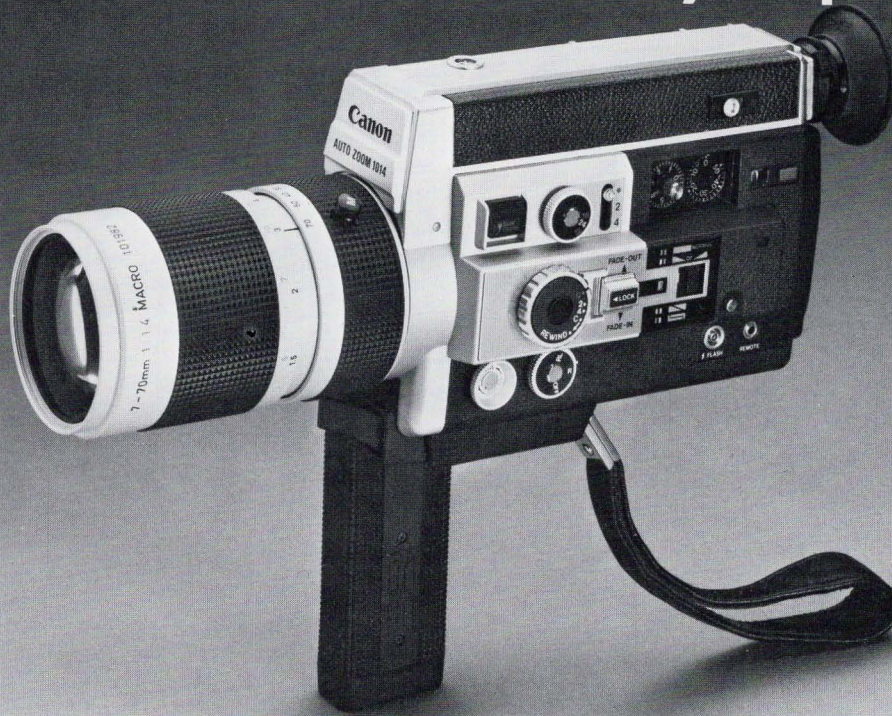


CODE NO. ITEM
 3-31201-24 Canon AZ 1014 Electronic w/lens
 7-70mm f/1.4 hood and
 remote switch

Canon AUTO ZOOM 1014 ELECTRONIC

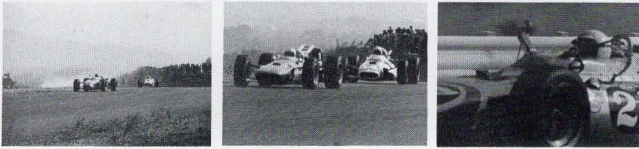
The Professional Quality Super 8



SPECIFICATIONS

- **Type:** 8mm movie camera with easy-loading system using Super 8 film cartridges
- **Picture Size:** 5.4x4.0mm
- **Lens:** 7-70mm f/1.4 with 10:1 zoom ratio; 18 elements in 13 groups; Super Spectra Coating; inner diameter 58mm, outer diameter 60mm
- **Viewfinder:** single-lens reflex type, combined with split-image rangefinder; meter information includes aperture scale, meter needle, over/under exposure warning marks, film-end caution lamp, shutter angle indicator and film transport indicator lamp; eyepiece adjustable from -4 to +2 diopters; built-in eyepiece shutter and eyecup
- **EE Mechanism:** through-the-lens type Servo EE mechanism with CdS photocell controlling aperture; coupled to film speed and filming speed
- **Light Measuring Range:** from ASA 400, f/1.4, 18 fps to ASA 16 f/32, slow-motion 54fps and single-frame shooting
- **Film Speed:** Automatically set by inserting the film cartridge. artificial light type: ASA 25, 40, 64, 100, 160, 250, 400 daylight type: ASA 16, 25, 40, 64, 100, 160, 250
- **CCA Filter:** Color Conversion A (CCA) filter built-in for using artificial light type film in daylight. Cancelled by inserting CCA filter cancellation adapter or lighting unit into CCA filter cancellation adapter socket. Automatically removed by inserting the daylight type cartridge.
- **Filming Speeds:** 18 fps, 24 fps, single-frame and instant slow-motion—about 54 fps
- **Variable Shutter Control:** 0° to 150° continuously; Automatic fading is possible by closing the shutter entirely.
- **Lap Dissolve and Superimposition:** Perfect lap dissolves and superimpositions are possible using the automatic rewinding and autofader mechanisms. 50 frames of lap dissolve or superimposition are possible.
- **Manual Aperture Control:** possible with EE/manual aperture control ring
- **Power System:** automatic filming and zooming by precise micromotors
- **Power Source:** six 1.5V penlight (AA) batteries, contained in body and handgrip; common power source runs filming system, zooming system and exposure meter
- **Power Zooming:** two speeds possible: H = 5 sec., L = 7 sec.
- **Manual Zooming:** with zooming ring, zooming speed switch at M, and 120° rotation angle
- **Running Ability:** 10 cartridges (approx.) at normal temperatures; 1.5 cartridges or more shooting single-frame mode, with new batteries
- **Footage Counter:** Counts exposed footage. Automatically resets when cartridge is removed.
- **Frame Counter:** 72 frames in one rotation (1 ft.); 2 frames per scale mark; with adjustable indication mark
- **Battery Check:** check button and check window
- **Handgrip:** folding type, containing battery chamber
- **Sockets:** for remote control, and for electronic flash synchronized for single-frame shooting
- **Remote Control:** possible with Remote Switch 60 or Remote Switch 3
- **Switch Dial:** safety switch, with running lock
- **Safety Devices:** over/under exposure warning marks; shutter lock; shutter-angle indicator; film transport indicator
- **Macro-Shooting System:** close-up shooting mechanism works by switching the zooming ring; when the distance scale is set at infinity, it is possible to shoot 189mm (7⁷/₁₆"') from the film plane indicator and 10mm (3⁸/₁₆"') from the front lens surface
- **Interval Shooting:** possible by using the Interval Timer E for single-frame interval shooting
- **Self-Timer:** 10 seconds shooting after 10 seconds delay by attaching Self-Time E
- **Size:** 93.5x277x121mm (3¹¹/₁₆"'x10¹⁵/₁₆"'x4³/₄"')
- **Weight:** 1,990g (4 lb. 6 oz.) with batteries

SELLING POINTS

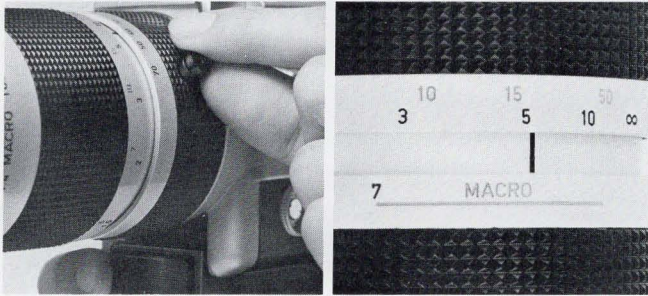


UNCOMPROMISED QUALITY

- a. The Canon AZ 1014 is at the pinnacle of Super 8 quality. In construction, durability and versatility, it is truly a perfectionist's Super 8 camera.

10:1 ZOOM LENS WITH FAST $f/1.4$ APERTURE

- a. Super image quality is assured with the 1014's remarkable $f/1.4$ zoom, with the almost unbelievable zoom ratio of 10:1. With this lens, the 1014 can tackle any subject in almost any light.
- b. For top-quality zooming smoothness, two speeds are available, five and seven seconds, plus manual zooming with an arc of 120° .



BUILT-IN MACRO MECHANISM PERMITS CLOSE-UP PHOTOGRAPHY WITHOUT ADDED ACCESSORIES

- a. The 1014 owner has instant close-up and macro capability by switching to the macro mode accomplished by turning the zooming ring. With this feature, the scope, drama and impact of the user's motion pictures are greatly increased. Using the macro mechanism, it is possible to photograph a subject field as small as $22 \times 31 \text{ mm}$ ($7/8'' \times 1\frac{1}{4}''$).
- b. When the macro mechanism is combined with conventional zooming, extraordinary visual effects can be achieved, zooming in effect from close-up to normal distances, then magnifying the subjects at normal distances all in one continuous motion.



Fade-out ← → Fade-in

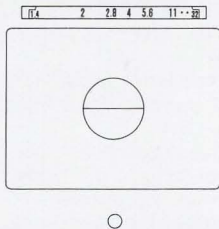
VARIABLE SHUTTER CONTROL

- a. Fade-ins and fade-outs are extremely easy with the 1014, thanks to its variable shutter which can range from wide-open at 150° to completely closed at 0° . With this type of fading mechanism, Neutral Density filters are not required, should the light be excessively bright, as they are sometimes with aperture-controlled fading.
- b. The 1014's variable shutter can also serve to reduce subject blur when photographing action, because narrowing the angle of the opening acts in much the same fashion as increasing the shutter speed on a still camera. For this type of operation, exposure compensation must be made.



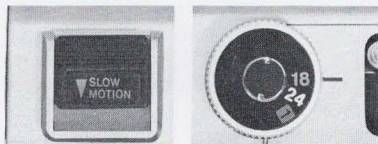
BUILT-IN MECHANISM FOR LAP DISSOLVES AND SUPERIMPOSITION

- a. Exciting, professional-looking lap dissolves and superimpositions can be easily accomplished with the 1014, because of its easy-to-operate rewind mechanism. Using this mechanism, it is possible to lap dissolve (fade from one subject to another) or superimpose up to 50 frames of film.



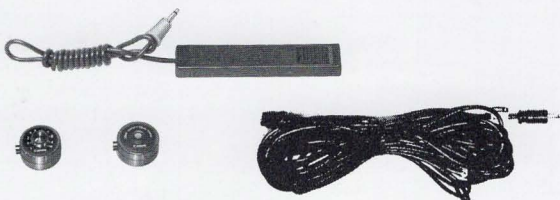
BRIGHT, ACCURATE VIEWFINDER WITH TOTAL INFORMATION

- a. The 1014's high-speed aperture and enlarged eyepiece make the viewfinder brighter and very easy to read. Its built-in split-image rangefinder focusing aid makes it easy to focus, even in low light. The standard split-image screen can be changed to a microprism on special order.
- b. Viewfinder information includes over/under exposure warning marks, aperture scale, meter needle, film-end caution, and shutter angle indicator and film transport indicators.



INSTANT SLOW MOTION

- a. The 1014's unique built-in instant slow motion permits interspersing slow motion instantly with the standard 18 and 24fps filming speeds. By simply using the slow-motion switch, a speed of approximately 54fps is obtained immediately. At this speed, exceptional definition of fast-moving objects is obtained.



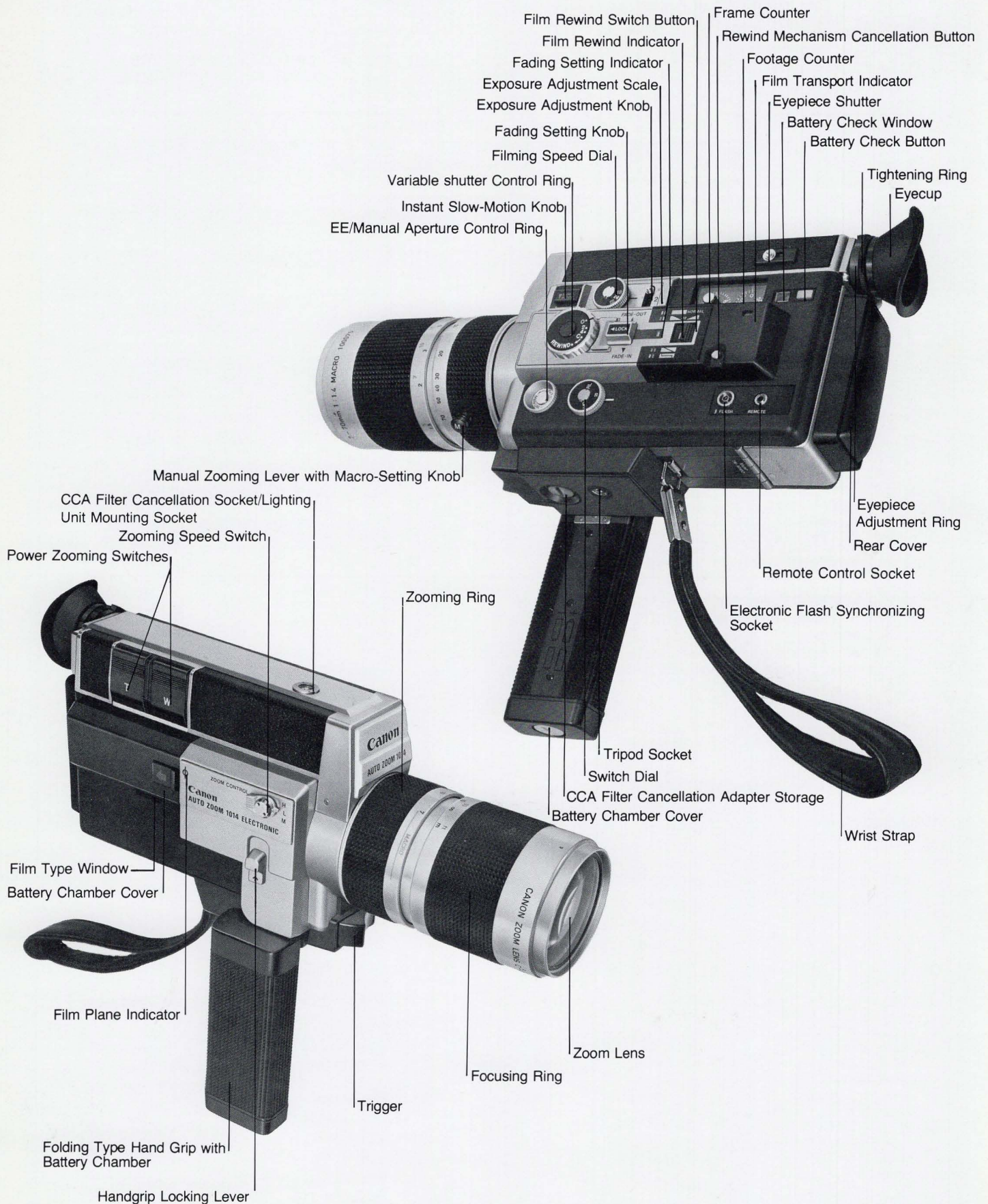
FLASH SYNCHRONIZATION

- a. The built-in flash socket is used for single-frame shooting. It is also ideal for titling or animation and "time lapse" scientific studies.

REMOTE CONTROL FILMING

- a. If the 1014 owner wishes to include himself in the footage, it is accomplished with the optional Self Timer E. If the user wants to record slow subject changes on a short length of film, the optional Interval Timer E is ideal. When single-frame filming where vibration must be kept to a minimum (such as in animation), Remote Switch 60 is an ideal accessory.

NOMENCLATURE



ACCESSORIES

CODE NO.	DESCRIPTION
5-43233-00	C-8 Close Up Lens 58mm 450
5-43242-00	C-8 Close Up Lens 58mm 240
5-39241-00	Self Timer E
5-39211-00	Interval Timer E
5-22041-01	Remote Switch 3
5-22051-00	Remote Switch 60
5-39111-00	Chest Pod
4-20601-20	Copystand 4
33-8621	Socket Cover for Filter Cancellation Adaptor for AZ1014E
33-8804	Filter Cancellation Adaptor for AZ1014E
5-81071-00	Extension Cord E1000
4-46006-01	Lens Hood S-60 in Case
4-60921-01	Carrying Case for AZ1014 Electronic
49-1002	Lens Cap 60mm (metal) for AZ1014E
5-61151-00	Neck Strap 8 with pad
C41-5507-211	PS-1000 Cine Projector

PLEASE NOTE: For further information on Canon Super-8 accessories, please refer to the last page in this section.

For information on filters available for Canon Super 8 cameras, please see section 2 of the Sales Guide.