

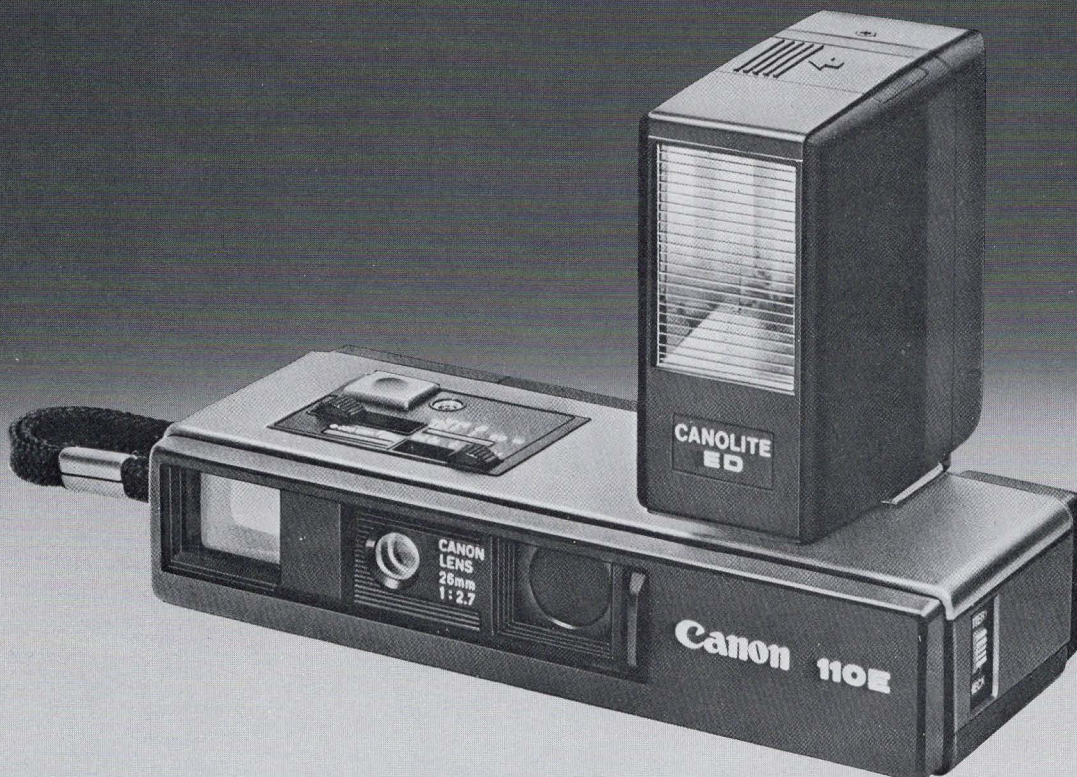
CODE NO.
1-62011-23

ITEM
110E Kit (includes Canolite ED & extender)

Canon 110 E

DISCONTINUED PRODUCT
Please retain this section for reference purposes.

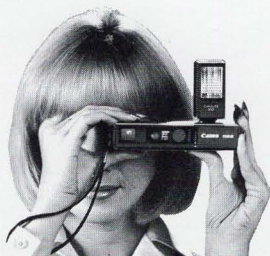
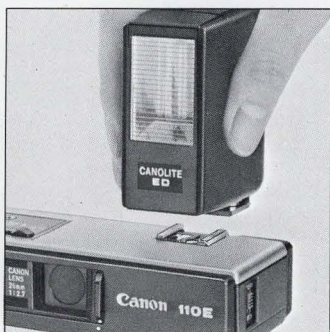
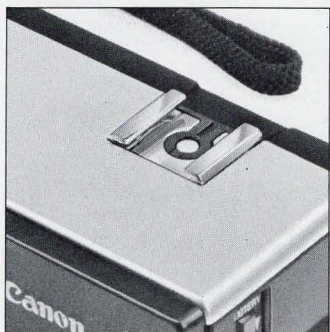
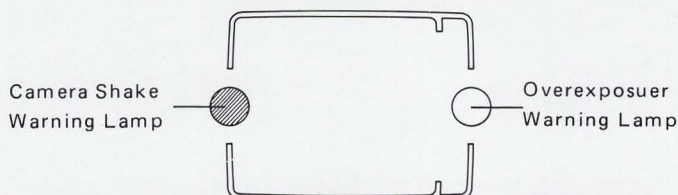
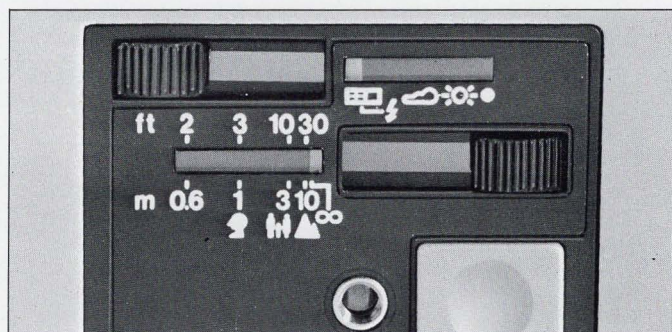
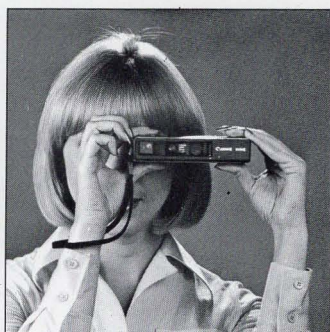
Precision in your pocket.



SPECIFICATIONS

- **Lens:** Canon lens 26mm f 2.7 with 4 elements in 4 groups
- **Distance Scale:** 0.6, 1 3, 10m and ∞ with zone focus marks
- **Shutter:** Electronic shutter 8 sec.-1/500 sec.
- **AE Coupling Range:** With ASA 80, EV0 (f/2.7 8 sec.)-EV17 (f 16, 1/500 sec.)
- **Film Speed Scale:** ASA 80
- **Automatic Flash Mechanism:** Automatic flash with Canolite ED
- **Viewfinder Information:** Field-of-view frame with parallax correction marks; overexposure warning lamp (red); and LED camera shake warning lamp/battery checker (yellow). The lamp keeps lighting during long exposure
- **Film Winding:** Single stroke film advance with sliding knob
- **Film Loading:** Cartridge insertion
- **Power Source:** 6V silver oxide battery, Eveready 544 or Mallory PX28
- **Back Cover Opening:** By sliding knob on the back of the body
- **Protector Cover:** Sliding cover on front body. Shutter button safety lock mechanism
- **Accessory Shoe:** With direct flash contact
- **Dimensions and Weight:** 133x55.5x28.5mm (5-1/4"x2-3/16"x1-1/8") 240g (8 1/2 oz.)
- **Accessories:** Canolite ED, Soft Case, Releases 30, 50, Selftimer 8 (Cannot be used when camera shake warning lamp lights up.)

SELLING POINTS



1. A Bright, Sharp f/2.7 Lens

The Canon 26mm f/2.7 lens gives you truly beautiful color photographs. A construction of four elements in four groups assures outstanding resolving power. The distinctive sharpness of the world-reknown Canon lenses allows you to capture the true natural colors and enables pictures to be enlarged as much as you wish.

2. Complete viewfinder information

The bright viewfinder of the new Canon 110E provides parallax correction marks in its field-of-view frame. An exposure indicator with an overexposure warning lamp shows whether the conditions are proper for shooting or overexposed by means of a red lamp at the right. The camera shake LED cautions the photographer during long exposures and also serves as a battery check.

3. Perfect daylight exposure with programmed AE

The automatic exposure control system always gives perfect daylight exposure metering. Its programmed AE circuitry is fully coupled to the ASA film speed, shutter speed and f/stop. And the Canon 110E's electronic shutter can just about handle any subject that will be encountered in a variety of lighting situations ranging from very dim to extremely bright. The shooting range is from EV 0 (8 seconds, f/2.7) to EV 17 (1/500 of a second, f/16).

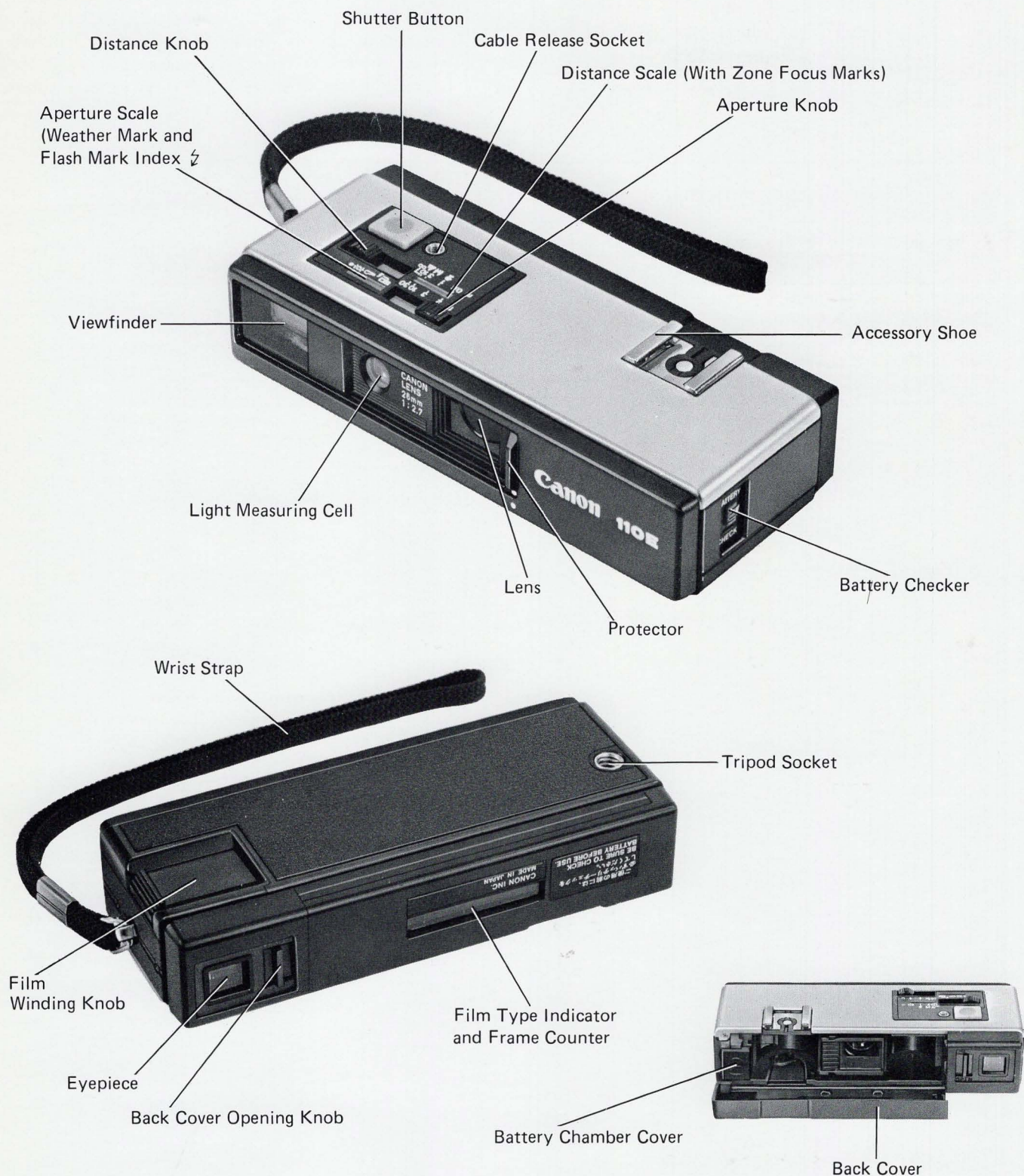
4. Fully automatic flash photography

The Canon 110E has been designed with its own compatible cordless electronic flash unit, the Canolite ED. Just attach it to the top of the camera, set the distance knob, and the camera is automatically switched over to the fully automatic flash control circuitry. There is no need to calculate guide numbers.

5. Exceptional portability and convenience

The compact, lightweight design of the Canon 110E lends it an exceptional portability. The convenience that it renders allows it to be slipped into an ordinary pocket and taken anywhere. And, the 110E's simple operation insures its readiness whenever it is needed. Film winding is accomplished with a sliding knob that advances the film in a single stroke. Cartridge insertion makes film loading quick and easy as well.

NOMENCLATURE



ACCESSORY

Canolite ED

The Canolite ED is an electronic flash unit especially designed for the Canon 110E. It is directly connected to the camera body. There is absolutely no necessity for worrying about guide numbers.

ACCESSORIES

CODE NO.	DESCRIPTION
5-00291-20	Canolite ED
5-63061-00	Release 30
5-63062-00	Release 50
5-64017-00	Self Timer 8
5-43761-01	Close Up Lens 110 in case
4-60971-00	Soft Case
5-01401-00	Extender for Canolite ED