

CODE NO.
1-32011-21

ITEM
Canon Datematic w/lens 40mm
f2.8 in case

Canon DATEMATIC



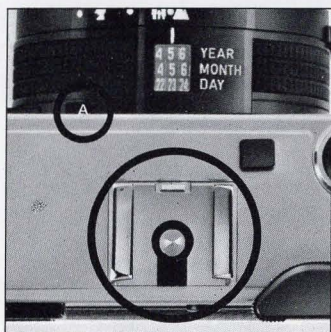
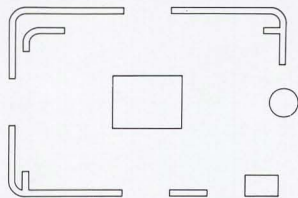
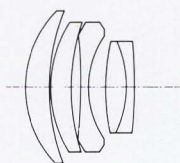
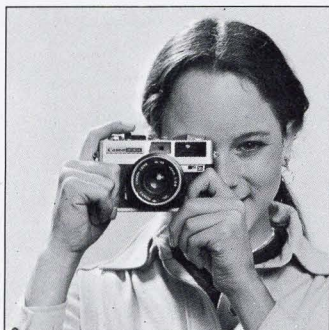
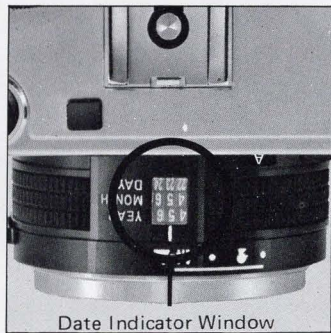
The camera that won't forget!



SPECIFICATIONS

- **Lens:** Canon lens 40mm f 2.8, with 5 elements in 4 groups
- **Focusing:** Superimposed image rangefinder
- **Distance Scale:** 0.8, 1 1.5, 2, 5m. and ∞ on bottom of lens barrel.
Zone focusing marks on top
- **Shutter:** Programmed electronic shutter
- **Automatic Exposure Range:** EV1-17 with ASA 100 film
- **Film Speed Scale:** ASA 25-400
- **Filter Compensation:** Automatic
- **Automatic Flash Mechanism:** With the Canolite ED attached, the focused distance is coupled to the automatic exposure mechanism when the camera is set to "A" Guide numbers can be set for automatic flash operation when using ordinary flash units
- **Guide Number Scale:** 14, 20, 28 (ASA 100 in meters). Do not use in-between settings
- **Flash Synchronization:** X synchronization
- **Viewfinder:** With parallax correction mark, field of view frame, date imprinting mark, rangefinder, combination battery check/camera shake warning light
- **Film Winding:** Single stroke 132° Stand-off 30°
- **Film Loading:** Multi-slot take-up spool
- **Back Cover:** Open pulling up the film rewind knob
- **Frame Counter:** S, 0-37 Automatically reset to "S" when the back cover is opened
- **Flash Shoe:** Built-in. With direct synchronization contact
- **Date Imprinting Mechanism:** Built-in. Date to be imprinted is set with the dials on lens barrel
- **Date Indications:** Year-74~83; 0~9, ☐ (blank space)
Month-0~12, ☐ (blank space)
Day-0~31 ☐ (blank space)
- **Dimensions:** 118x75x59.5mm (4-5/8"x2-15/16"x2-5/16")
- **Weight:** 440g. (15.5 ozs.)

SELLING POINTS



A Bright, Sharp f/2.8 Lens

The Canon 40mm f/2.8 lens affords beautiful color balance. And its 5-element 4-component construction assures high resolving power and outstanding ability to capture natural colors for excellent color reproduction. The distinctive sharpness of Canon lenses is world-renown and enables pictures to be enlarged as much as you wish.

Date Imprinting Mechanism

This date imprinting mechanism is an exclusive feature of Canon. Previously the mechanism had been incorporated into the body as in the earlier Canodate E resulting in a camera of longer dimensions. The Datamatic's innovation, however, preserves the camera's compactness. All date imprinting parts, switches, dials, indicators, and lamp, have been integrated within the optical system of the lens barrel. The entire date imprinting operation takes places around the lens.

A light emitting diode (LED) lights to imprint the date immediately after the shutter returns. The year month and day upon which the picture was taken is thus superimposed in the bottom right-hand corner of the photograph. It is also possible to use the numerals as serial numbers instead of dates. Numerals and dials rotate in the same direction the day dial rotates 360°. Upon switching the mechanism on, a mark appears inside the viewfinder where the date is imprinted. The option of not imprinting the date, since it may not always be necessary is also provided.

Perfect daylight exposure with programmed AE

The automatic exposure control system delivers perfect daylight exposure metering due to its programmed AE circuitry. All one has to do is move the A/guide Number Lever until the letter "A" appears and focus the camera. The AE mechanism is fully coupled to the film speed, programmed shutter speed and f/stop.

The Datamatic has a programmed electronic shutter with a metering range of EV 1 to EV 17 at ASA 100—a remarkable performance quality for this type of popular camera. It is programmed to combine an f/2.8 aperture with shutter speeds from 4 seconds to 1/125 of a second under dim conditions. With normal illumination, the program of the shutter speed and aperture changes to f/13.5 at 1/800 of a second. Its exposure mechanism affords the versatility of shooting with indoor illumination, even in a room with candle light.

A warning light indicates any camera shake that may affect exposure from 1/60 of a second. Since shutter speeds are not indicated, this lamp is necessary to caution the photographer during longer exposures.

Complete viewfinder information

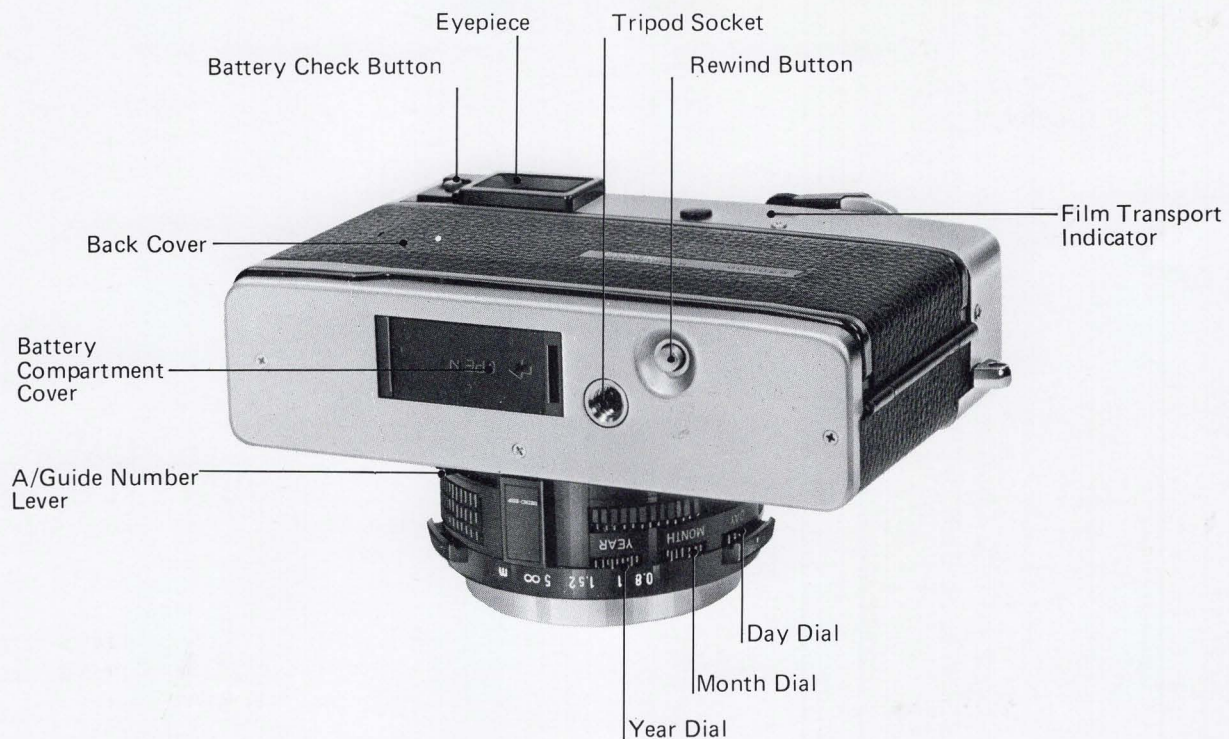
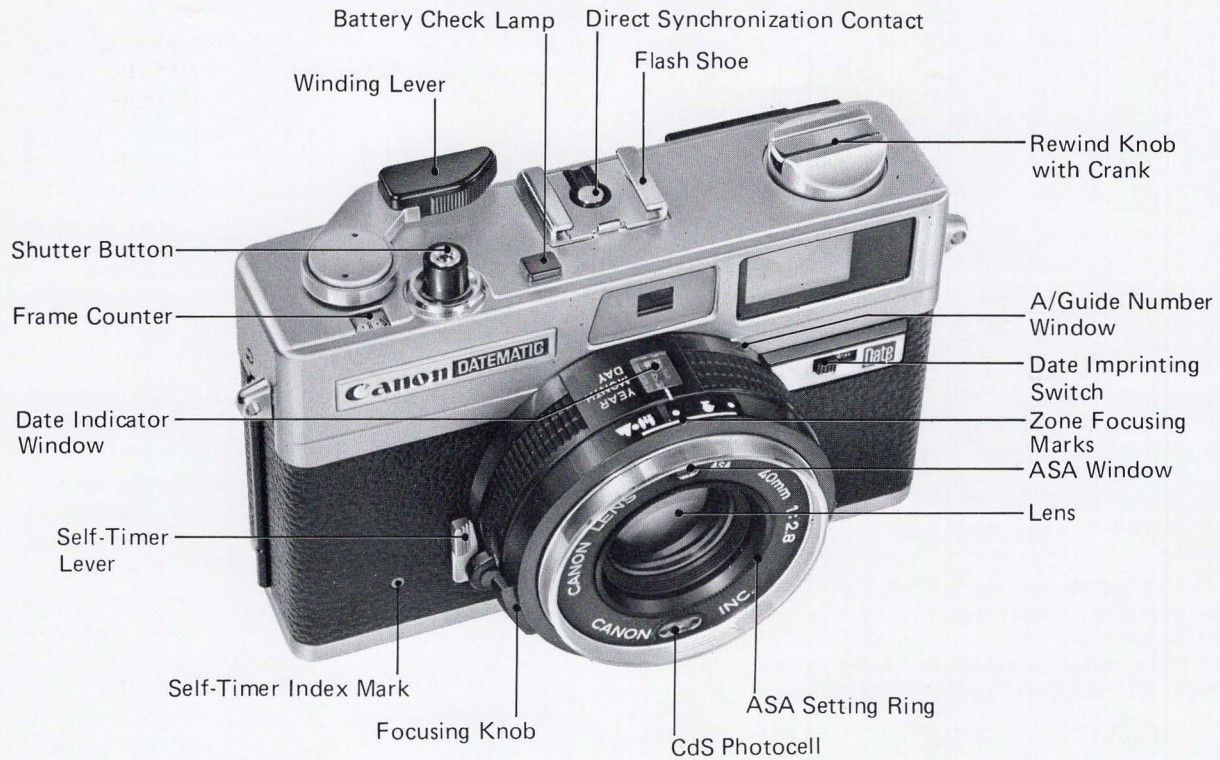
The Canon Datamatic viewfinder has a double superimposing rangefinder that only requires that the two images coincide in the center of the viewfinder for perfect focus. The bright viewfinder also has parallax correction marks, and a camera shake and underexposure warning light. The camera shake warning light also serves as a battery check.

Fully automatic flash control assures correctly exposed flash photography

The miniaturized Canolite ED cordless electronic flash unit was made to be used with the Datamatic as its electronic flash. Together they make photography with flash as easy as without.

The Datamatic has only a direct contact hot shoe. It does not have a cord socket. Attach it to the top of the camera move the A/Guide Number Lever to the "A" setting, and the camera is automatically switched over to fully automatic flash control circuitry. There is no further need to bother with any other switches or guide number settings. It is this very simple procedure that makes the camera fully operationa for either night or indoor photography since the correct f/stop is set automatically.

NOMENCLATURE



ACCESSORY

Canolite ED

The Canolite ED is an electronic flash unit especially designed for the Canon Datamatic. It is directly connected to the camera body

ACCESSORIES

CODE NO.	DESCRIPTION
5-00291-20	Canolite ED
5-63061-00	Release 30
5-63062-00	Release 50
5-64017-00	Self Timer 8
5-01341-00	Hot Shoe Adaptor
4-45015-00	Canonet Hood 4
4-60941-01	Eveready Case for Datematic
5-61111-00	Neck Strap 4 with pad

PLEASE NOTE: For further information on Canon Rangefinder accessories, please refer to the last page in this section.

For information on filters available for the Datematic please see section 2 of the Sales Guide.