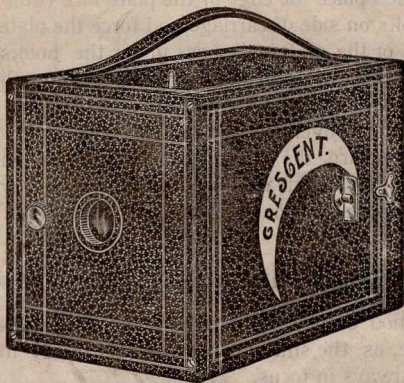


The "Crescent"

INSTRUCTION FOLDER.

The
Greatest
Camera
On Earth.



A High
Grade
Camera
For \$2.00.

The AIKEN-GLEASON CO.,

MANUFACTURERS OF

CAMERAS AND PHOTOGRAPHIC SUPPLIES,
LA CROSSE, WIS., U. S. A.

To Load the "Crescent."

THIS OPERATION MUST BE PERFORMED IN A DARK ROOM BY THE LIGHT OF A DARK ROOM LAMP. First remove the back-board, then place the edge of the plate face (dull surface) up, under the hooks on side of carriage and force the plate gently down until the edge of the plate will pass under the hooks at the other end of the carriage. Repeat this operation on the other side of the carriage and fasten the plates by firmly pressing the wire catch at the end of carriage over the edge of two plates so as to hold the plates firm, then turn the thumb-piece on side of camera, which is always parallel with the plates, so that the carriage will be parallel with the end of camera box, replace the back-board and you are ready

Instantaneous Exposures.

The method of making "snap shots" with the "Crescent" is very simple, as the shutter is always set ready for an exposure and the lens always in focus.

Before making an exposure, glance at the aperture in front of the camera, and you will observe an arrow-head marked on the shutter; notice which way this is pointing, as the shutter lever which is located on the top near the front of camera must be pushed in this direction when making an exposure.

When ready for making an exposure, hold the camera steady and push the shutter lever as stated above, and the impression is taken. After making one exposure turn the thumb-piece on side of camera, so as to bring the plate on the other side of the carriage in position.

Time Exposures.

The timing of exposures is entirely a matter of practice. There are no rules that may be followed with any degree of accuracy, as in different locations conditions of light always vary. A fairly well lighted interior will require from one-half to four minutes exposure, while out-door work may be done with the snap shutter, between ten and two o'clock. All plates work faster in warm weather.

The following rules should be observed:—

Place the camera upon a table or rest, so there will be no danger of moving it during the time the exposure is being made; press the time-button which is located on the left side near the front of camera, at the same time push the shutter lever, the same as for "snap-shots," this will leave the shutter open. When sufficient time has been given, push the shutter lever again in the opposite direction, which will close the shutter.

Always hold the camera perfectly still and as near level as possible to prevent distortion. Never hold the camera so that the light will shine on the lens. Point the camera with the light, or at right angles.

Avoid touching the face of the plate until it has been developed and dried.

Always unload the "Crescent" in a dark room, or in the "Crescent" changing bag.

Never expose the plates to the slightest ray of light until they have been developed and fixed.



The "Crescent" Changing Bag.

The use of the "Crescent" changing-bag renders a dark room unnecessary to load and unload the "Crescent" camera, as plates may be changed in the brightest sunlight.

First place the camera and a box of plates in the "Crescent" CHANGING BAG, insert in your hands in the openings for same and proceed to load and unload as described.

To Develop "Crescent" Plates.

This operation must be performed in dark room by the light of a dark room lamp. Dissolve and prepare the "Crescent" developing and fixing tablets as per directions on each box of tablets.

When your solutions are prepared, place the plate (face up) in developing tray and pour on enough of the developing solution to cover the plate.


If the exposure is properly timed, the image will appear in from 30 to 45 seconds. If the image does not appear in 45 seconds, the plate is undertimed, and should be taken out of the developer and soaked in water for a few moments, then returned to the developer; this softens the harsh effects of an undertimed plate. If the image flashes up too quickly the exposure has been overtimed, and the plate should be put at once into old developer, or, if no old developer is at hand, add two or three drops of a strong solution of bromide of potassium to the developer. This will restrain the development, and add the brilliancy and desired contrast between the high lights and shadows.

When the plate is developed, rinse it thoroughly in clean water, and put into the other tray containing the Hypo solution or Fixing bath, and let it remain until all traces of white silver through the back of plate disappear. Then wash for ten minutes and place

on edge (face out) to dry Never dry your negatives by artificial heat.

All developments should be carried until the image is almost lost on the face of plate and shows well through on the back of the plate.

After developing, pour the developer just used into another bottle for future use. Do not mix it with the unused developer When you wish to develop again, use the old developer and strengthen it with a little of the new developer

 Be careful never to get a particle of the Hypo solution into your developer Rinse your hands before putting them from one solution to the other.

Printing.

Take the negative and place it in the printing frame, film side up. Place the printing paper on the negative, face down, put the back of frame in place and set up in the sunlight, glass side out, Print about two shades darker than you wish the finished picture. While printing examine the print from time to time in a subdued light by opening one end of the printing frame and turning back the paper; be careful not to pull or move the paper When your prints are all made they are ready for the "Crescent" Toning Bath. (Full directions for use are given on each bottle.)

Mounting.

Make a thick paste of equal parts of flour and starch and use cold. Take prints from water, place on a piece of glass face down, one on top of the other Roll the water out of the prints with a towel or heavy blotting paper, then with a paste brush put a thin even coat of paste on each print, place print on card and rub down, using a small piece of cotton batting. A little care and experience will soon teach you to make beautiful pictures.

Price List of Supplies.

The Crescent Camera	2.00
Crescent Developing Outfit—2 Trays, 1 Printing Frame. 1 Dark Room Lamp, Tablets sufficient for 8 ounces devel- oper, which may be used repeatedly and 1 dozen Printing Paper.	1.25
Developing Tablets for 8 ounces solution25
Dark Room Lamp	50
Printing Frames (each)	35
Dry Plates, per dozen, (3x3)40
Extra Developing Trays (each)20
Changing Bag, for changing plates in daylight..	.80
Toning Solution (12 ounces).40
Printing Paper, per dozen.10
“ “ “ gross	1.00
Card Mounts, per dozen10
“ “ “ hundred.	1.00
Carrying Case for Bicycles	1.50
“ “ “ Tourists	1.50


The AIKEN-GLEASON CO.,
 MANUFACTURERS OF
CAMERAS AND PHOTOGRAPHIC SUPPLIES.
LA CROSSE, WIS., U. S. A.