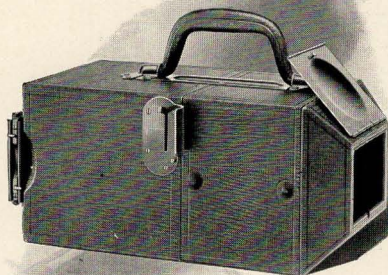


# FINGER PRINT CAMERA



FOLMER & SCHWING DIVISION  
EASTMAN KODAK COMPANY  
ROCHESTER, N Y

# FINGER PRINT CAMERA



Folmer's Patent, May 11, 1915

FOLMER & SCHWING DIVISION  
EASTMAN KODAK COMPANY  
ROCHESTER, N. Y





"6 seconds" and the Finger Print record is made

# The Folmer & Schwing Finger Print Camera

THE finger print system is recognized and established by various national and international Police Departments as a reliable means for positive identification. The departments of criminal investigation in the large cities, as well as other large organizations, are extensively and successfully applying this system.



Full Size Reproduction

Based upon the practically imperishable design caused by the ridge formation on the outer joints of thumb and fingers, each design possessing peculiar characteristics incapable of duplication, there is an opportunity for unlimited application of the system over an extensive field.

The Police Departments of the smaller cities are becoming actively interested, and feel the necessity for installation of the system. The Army and Navy have applied it as a means for identifying deserters and for



other purposes. Banking Institutions make use of it for the protection of depositors, and the possible application of the system to their requirements is claiming the attention of various commercial and educational organizations.

A demand has, therefore, been created for a practical and efficient camera for producing accurate photographic records of finger prints, which would require no expert knowledge of photography for its successful operation.

This has been provided in the new F & S. Finger Print Camera. Its small size ( $11\frac{3}{4} \times 6 \times 6$  in.) makes it exceptionally convenient for general use, and especially when used in locations inaccessible to apparatus previously employed, which apparatus required the use of a tripod, as well as means, often difficult to procure, for artificially illuminating the subject.

The F & S. Finger Print Camera, with which  $2\frac{1}{4} \times 3\frac{1}{4}$  Plates or Film can be used, affords not only a thoroughly efficient means for securing photographically accurate records of finger prints, but is readily adapted to uses other than criminal investigation where accurate photographic records are desired.

There is often occasion for quickly obtaining a record of a pattern, signature, formula, label, photograph, etc., or a portion of some printed or written matter, when there is not sufficient time for the usual procedure in such cases, or the nature of the article precludes the use of outside means for reproduction.

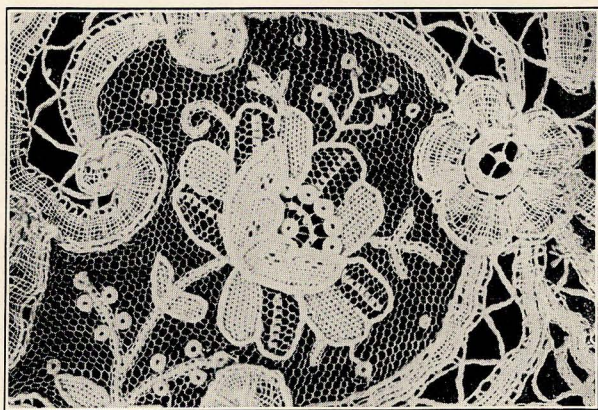
The F & S. Finger Print Camera was designed to meet these requirements and will be found most simple in operation and effective in results.

Full size reproductions of every detail covering an area of  $2\frac{1}{8} \times 3\frac{1}{8}$  inches can be made. Photographic records of a portion of textile products, records of signatures on checks, passes, receipts, etc., fac-similes of a certain type, design or trade mark or portion thereof which is

to be retained or mailed to some other locality for reference, can be readily obtained.

## The Camera

The camera is equipped with four miniature lamps operated by batteries contained in the camera. These lamps are located inside the camera, back of the front aperture, easily accessible for renewal, and are automatically turned on, brilliantly illuminating the fin-



Full Size Reproduction

ger print or other subject with the act of making the exposure. The lamps may be used in locating or properly placing the camera over the finger prints without interfering with the shutter mechanism, by pressing a small button provided for that purpose.

The lens consists of an f.6.3 Kodak Anastigmat which is unalterably fixed in the camera at a point that renders a FULL SIZED image of the finger print with extreme definition.

The shutter mechanism is extremely simple and exposures of varying duration can be readily made.



## The Camera in Use

When the finger print is located and ready for the record to be made, the metal front door of the camera is opened. The rectangular front aperture of the camera, measuring  $2\frac{1}{4} \times 3\frac{1}{4}$  inches, the dimensions of the plate



Making the Exposure

capacity of the instrument, is placed directly over, and held firmly against the surface upon which the finger print or other subject is located, the shutter release lever is pressed downward, automatically lighting the lamps, and making the exposure.

An instruction book accompanies the camera, giving full information relative to its operation. A Finger Print Developing Tank is supplied whereby it is made easily possible for even the uninitiated to produce excellent negatives.

## Specifications

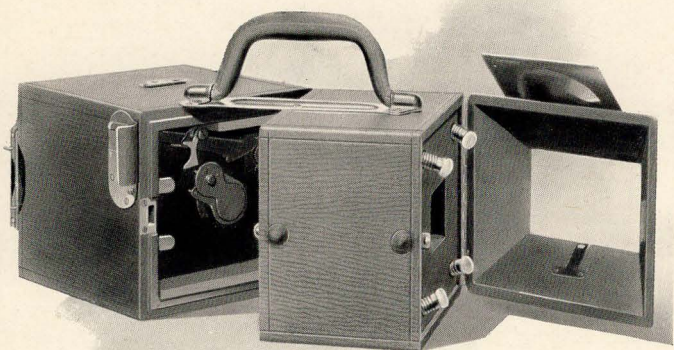
Size	11 $\frac{3}{4}$ x 6 x 6
Weight with batteries)	5 lbs. 8 ounces

## The Price

F & S. Finger Print Camera complete with lens, shutter, two batteries, ten lamps and one double plate holder 2 $\frac{1}{4}$ x 3 $\frac{1}{4}$	<b>\$30.00</b>
Graflex Plate Holder, 2 $\frac{1}{4}$ x 3 $\frac{1}{4}$	<b>1.50</b>
Graflex Magazine Plate Holder (for 12 glass plates, 2 $\frac{1}{4}$ x 3 $\frac{1}{4}$ )	<b>10.00</b>
Graflex Roll Holder (for 6 exposure Graflex Roll Film)	<b>7.00</b>
Graflex Film Pack Adapter (for 12 exposure Premo Film Pack, 2 $\frac{1}{4}$ x 3 $\frac{1}{4}$ )	<b>3.00</b>
Extra Mazda Miniature Lamps, each	<b>15</b>
Extra Mazda Miniature Lamps, per carton of ten	<b>1.50</b>
Seed 27 "Gilt Edge Plates," 2 $\frac{1}{4}$ x 3 $\frac{1}{4}$ , per dozen	<b>.35</b>
Seed Process Plates, 2 $\frac{1}{4}$ x 3 $\frac{1}{4}$ , per dozen	<b>.35</b>
Extra Batteries No 789, each (set of 4 cells)	<b>.65</b>
Graflex Roll Holder Film, 6 exposures, 3 $\frac{1}{4}$ x 2 $\frac{1}{4}$ , per roll	<b>.20</b>
Premo Film Pack, 12 exposures, 2 $\frac{1}{4}$ x 3 $\frac{1}{4}$ , per pack	<b>.40</b>







The F & S. Finger Print Camera is here shown opened for the purpose of renewing exhausted batteries or lamps and cleaning the lens



Powdered Finger Prints on Highly Polished  
Black Surface