



GRAFLEX

# GRAFLEX and Graphic Cameras



EASTMAN KODAK COMPANY  
*Folmer & Schwing Department*  
ROCHESTER, NEW YORK  
1925





The above illustration is from a Graflex negative made at  $1/25$  of a second. The cover illustration is from a Graflex negative made at  $1/350$  of a second.



# The Graflex

STRIKING pictures of everyday subjects are easy to make with a Graflex. You know when the focus is sharp; you see what the view includes. The lens admits abundant light, the shutter at your will works at slow or extremely high speeds.

With such advantages, the Graflex has long been the professional's favorite hand camera. And, naturally enough, such safeguards are valued still more by the amateur

Proper focus, pleasing composition and ample exposure—the essentials of a good negative—are facilitated by the reflecting mirror, focal plane shutter and fast lens on any Graflex.

These features are as valuable at 1/10 as at 1/1000, as valuable for quiet portrait studies as for exciting action scenes. Therefore, the Graflex user finds photographic excellence easy to attain. His camera will do all, except wide angle work, that any hand camera can do.

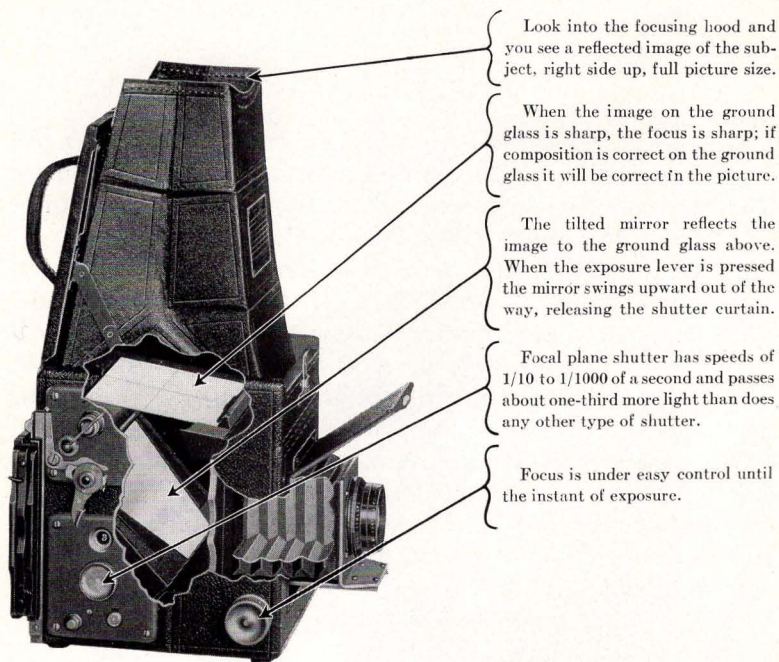
## *A Right-side-up, Picture-size Image*

The reflecting mirror takes the guesswork out of composition and focusing by showing on the ground glass at the base of the viewing hood a right-side-up, picture-size image of the subject, visible until the instant of exposure. Arrangement, lighting and spacing are all seen in advance, action is faithfully followed. Composition becomes a matter of easy control.

Precise focus is also certain. As the lens is racked back and forth, the image reflected on the ground glass tells when the focus is right. Thus the reflecting mirror feature protects the amateur from two of his favorite faults. He *knows* when the focus is sharp, he *sees* what the view includes.

The Graflex Focal Plane shutter is a long curtain in which are several reinforced rectangular openings of different sizes. During an exposure one of these openings passes close across the film, at



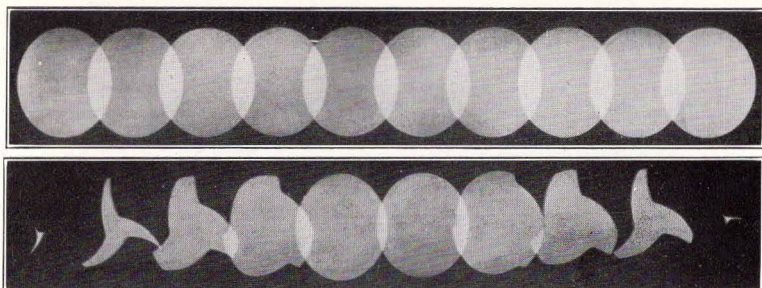


constant velocity, giving uniform illumination throughout. Attached to the camera is a metal plate on which are engraved the exposures obtained by each curtain opening when combined with each curtain tension. The mechanism is simple and positive.

### *Speeds For All Occasions*

Twenty-four instantaneous speeds, 1/10 to 1/1000 of a second, a slow snapshot of about 1/5 and *time* are provided a range that covers every requirement.

At 1/350 or 1/295, Graflex pictures of lively youngsters, athletes or active animals have an air of animation that can be caught only at high speed. With the shutter set at 1/5 or 1/10, snapshots can be made indoors under good light.



From actual photographs made with identical lenses during exposures of  $1/100$  of a second, each flash representing  $1/1000$  of a second. The upper strip, made with a Graflex Focal Plane shutter, shows uniform illumination, whereas the lower strip indicates that the best between-lens shutter is "wide open" during the fifth and sixth flashes only

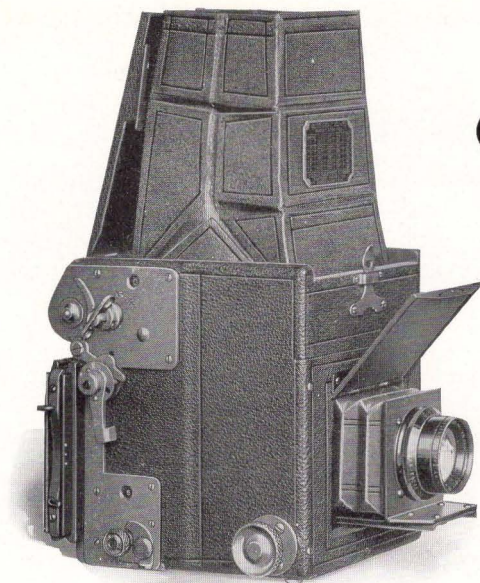
As shown in the laboratory photographs above, the Graflex focal plane shutter works at full efficiency throughout the exposure and passes about a third more light than does one of the "between-lens" type. This means that the Graflex can be operated at greater shutter speed without danger of underexposure and that when using Kodak Cut Film *Super Speed* a slow snapshot will often do where another camera would require *time*.

The big, fast Kodak Anastigmat  $f.4.5$  permits the focal plane shutter's efficiency to be fully realized—this in addition to the lens' inherent optical merit. For sharp definition, all over the negative, the Kodak Anastigmat  $f.4.5$  takes first rank.

Though richly handsome, the Graflex is designed to withstand rough use. Beneath its cover of luxurious Morocco leather is a body of choice mahogany, sturdily joined. Exposed wood parts are ebonized; exposed metal parts are silver-plated brass, oxidized to a dull, matte tone. Each Graflex is built of the best and by the best, throughout.

The Graflex combines the reflecting mirror, focal plane shutter and fast lens in a camera that satisfies the most exacting professional worker. Yet it is so easy to operate, and to understand, that the amateur appreciates its advantages as soon as he gets a Graflex in his hands and sees in the hood a big, right-side-up, image of his subject—a thrill that no other type of camera can offer.





## Graflex, *Series B*

$2\frac{1}{4} \times 3\frac{1}{4}$

**I**N THIS new camera, recent refinements supplement the renowned reflecting feature, focal plane shutter and fast lens. It carries a Kodak Anastigmat  $f.4.5$ , permanently set in a rigid metal front, which moves smoothly on a single wide track. the *Series B* improvements.

Like larger Graflexes, this little instrument has the reflecting mirror, by which the user *knows* when focus is sharp and *sees* what the view includes. He may go from viewpoint to viewpoint or the subject itself may change. Yet focus remains under instant control. His left thumb waits at the shutter release for the moment when the reflected image pleases his eye.

Like larger Graflexes this model has twenty-four snapshot speeds from  $1/10$  to  $1/1000$ , a slow automatic exposure of  $1/5$  and any *time* desired.

Picture size is ample for the album,  $2\frac{1}{4} \times 3\frac{1}{4}$  film is inexpensive;

splendid enlargements are easy to make from Kodak Anastigmat negatives.

One cut film holder is regular equipment, a plate holder is optional and attachments for using film packs and roll film are listed below

It's a quick action camera. Hood opens, lens uncovers, at the release of a catch near the handle and a turn of the focusing knob.

Think of all this capacity and convenience in a camera that closes to five-inch height, that weighs only forty ounces.

It's the smallest, newest and lowest priced Graflex, the  $2\frac{1}{4} \times 3\frac{1}{4}$ , *Series B*.

#### DETAILS

Dimensions,  $5 \times 4\frac{3}{8} \times 5$  in.; weight with lens,  $2\frac{1}{2}$  lbs; focal length of lens,  $4\frac{3}{8}$  inches; closest working distance, 22 inches.

#### PRICES

	$2\frac{1}{4} \times 3\frac{1}{4}$
GRAFLEX, <i>Series B</i> , with one cut film holder or one plate holder and Kodak Anastigmat Lens <i>f</i> .4.5, No. 30	\$62 50
Graflex Roll Holder, No. 50	11 00
Graflex Cut Film Holder	1 75
Graflex Cut Film Magazine	12 00
Graflex Plate Magazine	12 00
Graflex Film Pack Adapter	4 50
Graflex Plate Holder	1 75
Ground Glass focusing panel, to interchange with holder	3 25
Leather Case for camera and roll holder or cut film magazine	6 75
Leather Case for camera and plate magazine	7 25
Kodak Cut Film, doz.	46
Kodak Cut Film <i>Super Speed</i> , doz.	52
Kodak Film Pack, No. 520	50
Eastman Film Cartridge No. 150, 6 exposures	25

*The prices of camera and film include the excise tax.*





## Graflex, *Series B*

$3\frac{1}{4} \times 4\frac{1}{4}$

4 x 5

5 x 7

EVERY *Series B* Graflex is fitted with a Kodak Anastigmat lens *f*.4.5 of suitable focal length and covering power. Such unity of design in the factory means harmony in the hands of the user when there's a tricky picture to make.

From sighting the subject to closing the camera is a matter of mere seconds with a *Series B* Graflex. Slip a catch near the handle to open the hood, give the focusing knob a tiny turn to uncover the lens. The reflected image shows big and brilliant, right-side-up, until the shutter is tripped. Freedom from guesswork in the process means absence of error in the picture.

Twenty-four snapshot adjustments from 1/10 to 1/1000, a slow automatic of 1/5, as well as *time*, match every necessity. And speed for speed, the Graflex focal plane shutter admits a third more light

than does any other type of shutter a guard against underexposure.

One holder for Kodak Cut Film and Kodak Cut Film *Super Speed* or one plate holder is regularly supplied. Attachments are also available for using film packs and rolls, so that anyone can make his negatives on whatever medium he prefers.

The  $3\frac{1}{4} \times 4\frac{1}{4}$  and  $4 \times 5$  are popular Graflex sizes while the  $5 \times 7$  has its own special virtue enlargements are seldom necessary

#### DETAILS

	$3\frac{1}{4} \times 4\frac{1}{4}$	$4 \times 5$	$5 \times 7$
Dimensions	$5\frac{3}{4} \times 5\frac{3}{8} \times 6\frac{1}{4}$	$6\frac{3}{4} \times 6\frac{1}{4} \times 7\frac{1}{4}$	$9\frac{1}{4} \times 8\frac{1}{4} \times 8\frac{3}{4}$
Weight	$4\frac{1}{2}$ lbs.	$6\frac{1}{4}$ lbs.	$9\frac{3}{4}$ lbs.
Focal length of lens	$5\frac{1}{2}$ in.	$6\frac{3}{8}$ in.	$8\frac{1}{2}$ in.
Closest working distance	$24\frac{3}{4}$ in.	$25\frac{3}{4}$ in.	$27\frac{3}{4}$ in.

#### PRICES

	$3\frac{1}{4} \times 4\frac{1}{4}$	$4 \times 5$	$5 \times 7$
GRAFLEX, <i>Series B</i> , with one cut film holder or one plate holder and Kodak Anastigmat Lens <i>f.4.5</i>	No. 31 \$75 00	No. 32 \$92 00	No. 34 \$145 00
Graflex Roll Holder	No. 51 11 50	No. 53 12 50	No. 54 15.00
Graflex Cut Film Holder	2 50	2 50	3 50
Graflex Cut Film Magazine	14 00	15 25	17 00
Graflex Plate Magazine	14 00	15 25	17 00
Graflex Film Pack Adapter	4 75	5 50	7 50
Graflex Plate Holder	2 50	2 50	3 50
Kodak Pictorial Diffusion Disk	No. 31 5 00	No. 32 5 00	No. 34 6 00
Leather Case for camera and roll holder or cut film magazine	9 00	10 00	15 00
Leather Case for camera and plate magazine	10 00	11 50	16.00
Ground glass focusing panel, to interchange with holder	4.00	5 00	7 00
Kodak Cut Film, doz.	67	93	1 50
Kodak Cut Film, <i>Super Speed</i> , doz.	77	1 03	1 65
Kodak Film Pack	No. 518 90	No. 523 1 10	No. 515 1 90
Eastman Film Cartridge, 6 exp.	No. 151 45	No. 153 55	No. 154 95

*The prices of cameras and film include the excise tax.*





Revolving Back  
Graflex,  
*Series B*

$2\frac{1}{4} \times 3\frac{1}{4}$

**I**T's a small Graflex. Yet it boasts every feature mentioned on preceding pages, plus a revolving back.

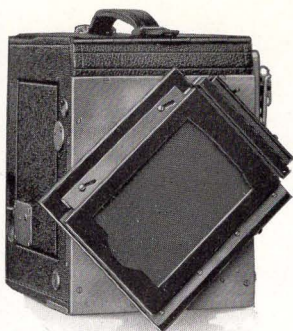
Tall subjects are bigger and better in vertical pictures than in horizontal. This Graflex makes either kind, easily. With a quarter turn of the revolving back, the long way of the film is placed upright. The camera need never be held on its side; the viewing hood is always on top. Composition is simplified when one sees on the ground glass a right-side-up image of the subject. Since the image is picture size, it shows every detail that will show in the negative.

Fast speeds up to 1/1000 are provided for exciting action. In outdoor shade and in well-lighted rooms the 1/10 and 1/5 are useful, indeed, with the Kodak Anastigmat opened to *f*.4.5.

One cut film holder or one plate holder comes with the camera.

Roll film and film packs can also be used in the proper attachments, listed below

Amateurs are attracted to the Graflex by the certainty of Graflex picture-making. Many of them select this particular model because of its compact completeness. It is sure to satisfy anyone who doesn't require contact prints larger than  $2\frac{1}{4} \times 3\frac{1}{4}$ —an economical size for which to buy film.



The Revolving Back works smoothly and is light-tight in any position.

#### DETAILS

Dimensions,  $6 \times 4\frac{1}{2} \times 6\frac{1}{4}$  in.; weight, 4 lbs.; focal length of lens,  $5\frac{1}{2}$  in.; closest working distance,  $22\frac{1}{2}$  inches.

#### PRICES

	$2\frac{1}{4} \times 3\frac{1}{4}$
REVOLVING BACK GRAFLEX, <i>Series B</i> , with one cut film holder or one plate holder and Kodak Anastigmat Lens <i>f.4.5</i> , No. 31	\$78 00
Graflex Roll Holder, No. 50	11 00
Graflex Cut Film Holder	1 75
Graflex Cut Film Magazine	12 00
Graflex Plate Magazine	12 00
Graflex Film Pack Adapter	4.50
Graflex Plate Holder	1 75
Kodak Pictorial Diffusion Disk, No. 31	5 00
Ground glass focusing panel to interchange with holder	3 25
Leather Case for camera and roll holder or cut film magazine	7.25
Leather Case for camera and plate magazine	8.50
Kodak Cut Film, doz.	46
Kodak Cut Film <i>Super Speed</i> , doz.	52
Kodak Film Pack, No. 520	.50
Eastman Film Cartridge No. 150, 6 exposures	25

*The prices of camera and film include the excise tax.*





Revolving Back  
**Graflex,**  
*Series B*

$3\frac{1}{4} \times 4\frac{1}{4}$   
 $4 \times 5$

**A**MATEURS and professionals alike praise this camera. For it has a revolving back combined with the reflecting mirror, focal plane shutter, fast lens and *Series B* improvements. Both the  $3\frac{1}{4} \times 4\frac{1}{4}$  and  $4 \times 5$  are popular sizes.

A quarter turn of the back places the long dimension of the film in vertical position, permitting large images of tall subjects. The back is light-tight in any position and the holder can stay in place during the turn.

Attractive pictures are no task with a Graflex. As one looks down on the ground glass he knows what the lens is seeing. If the image is pleasing and sharp in the hood, it will be pleasing and sharp in the picture.

Among the twenty-four speeds, the  $1/10$  is as useful as the  $1/1000$ .

And indoors or in the shade the slow exposure of  $1/5$ , with the lens at  $f.4.5$ , can often be substituted for *time*, a real advantage in photographing children, pets and other subjects that won't stand still for long.

Kodak Anastigmat  $f.4.5$  is a fast lens, and more. For sharpness of definition it is unexcelled, the life that is in its negatives remains in its enlargements.

One cut film holder or one plate holder comes with the camera, roll film and film packs can be used in auxiliary attachments.

Horizontal composition is easy with any Graflex; vertical also is easy with a revolving back model.

#### DETAILS

	$3\frac{1}{4} \times 4\frac{1}{4}$	$4 \times 5$
Dimensions	$6\frac{3}{4} \times 5\frac{1}{2} \times 6\frac{7}{8}$	$8\frac{3}{8} \times 6\frac{3}{8} \times 7\frac{7}{8}$
Weight	$5\frac{1}{2}$ lbs.	$7\frac{3}{4}$ lbs.
Focal length of lens	$6\frac{3}{8}$ in.	$7\frac{1}{2}$ in.
Closest working distance	24 in.	$27\frac{1}{2}$ in.

#### PRICES

	$3\frac{1}{4} \times 4\frac{1}{4}$	$4 \times 5$
REVOLVING BACK GRAFLEX, <i>Series B</i> , with one cut film holder or one plate holder and Kodak Anastigmat Lens $f.4.5$	No. 32 \$100 00	No. 33 \$116 00
Graflex Roll Holder	No. 51 11 50	No. 53 12 50
Graflex Cut Film Holder	2 50	2 50
Graflex Cut Film Magazine	14 00	15 25
Graflex Plate Magazine	14 00	15 25
Graflex Film Pack Adapter	4 75	5 50
Graflex Plate Holder	2 50	2 50
Kodak Pictorial Diffusion Disk	No. 32 5 00	No. 33 5 00
Leather Case for camera and roll holder or cut film magazine	10 00	12 00
Leather Case for camera and plate magazine	11 50	13 50
Ground glass focusing panel to interchange with holder	4 00	5 00
Kodak Cut Film, doz.	.67	93
Kodak Cut Film <i>Super Speed</i> , doz.	77	1 03
Kodak Film Pack	No. 518 90	No. 523 1 10
Eastman Film Cartridge, 6 exposures	No. 151 .45	No. 153 55

*The prices of cameras and film include the excise tax.*



**T**HESE are the only Graflexes embodying the autographic device and using regular Kodak roll film. Another popular point is that they make  $2\frac{1}{2} \times 4\frac{1}{4}$  and  $3\frac{1}{4} \times 5\frac{1}{2}$  (postcard) pictures.

With the autographic device, date and title or other important facts, can be written on the margin of the film at the time of exposure. Such identification, permanent on the negative, is always useful and often invaluable. Ages of children, engineering data, names of places and people are examples of notes worth recording for later reference.

Kodak roll film offers these advantages it loads in daylight, develops in daylight with a Kodak Film Tank, is easily obtainable all over the world.

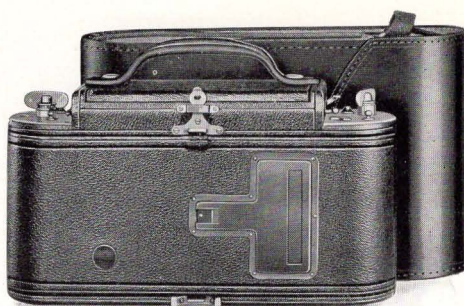
At the ends of the 3A model, illustrated above, room is provided for four ten-exposure rolls, which, added to one roll loaded for use,



gives the camera a self-contained capacity of fifty pictures. Travelers and sportsmen speak well of this convenience.

Rounded ends on the 1A model make it an especially handsome camera smart in line, splendid in finish.

Coupled with these advantages, the 1A and 3A Graflexes have the twenty-four speed (1/10 to 1/1000) focal plane shutter, with a slow exposure of 1/5 that is useful in dull light, and *time*. The reflecting mirror is present, also, and the lens is the Kodak Anastigmat *f*.4.5.



The 1A Autographic Graflex, closed to carry, and its case.

#### DETAILS

	1A (2½ x 4¼)	3A (3¼ x 5½)
Dimensions	5¼ x 3 x 9½	6¾ x 5 x 10
Bellows capacity	6½ in.	10 in.
Weight	4½ lbs.	8 lbs.
Focal length of lens	5½ in.	7½ in.

#### PRICES

	1A	3A
AUTOGRAPHIC GRAFLEX with Kodak Anastigmat Lens <i>f</i> .4.5	No. 31 \$120 00	No. 33 \$150 00
Kodak Pictorial Diffusion Disk	No. 31 5 00	No. 33 5 00
Leather Case	6 00	10 00
Extra Lens Board	60	75
Autographic Film Cartridge, 12 exposures, No. A116 for 1A	60	
Autographic Film Cartridge, 10 exposures, No. A122 for 3A		90
Autographic Film Cartridge, 6 exposures, No. A116 for 1A, No. A122 for 3A	30	55

*The prices of cameras and film include the excise tax.*



## The Compact Graflex

EVERY Graflex has a body of selected mahogany, covered with Morocco leather, trimmed in oxidized, silver-plate—a construction that combines robust strength and rich style. Add space-saving design and this description fits the Compact Graflex.

Commercial workers, as well as advanced amateurs, like a camera that makes 5 x 7 negatives, since contact prints of that size are large enough to display and to sell.

Of the twenty-four speeds provided by the focal plane shutter, the 1/10 is as valuable as the 1/1000. There is also an adjustment for 1/5. In dull light or indoors one of these slow snapshots sometimes serves where other cameras require *time*.

Whoever examines a Graflex is impressed by the reflecting mirror. To see a right-side-up image, full picture size, visible until the instant of exposure is a rare sensation. And it adds certainty of suc-

cess every time a picture is made. The distance isn't estimated, the image isn't reduced in a finder. The user knows what the camera is doing.

Such a superior camera deserves a superior lens, a requirement which the Kodak Anastigmat *f*.4.5 amply meets.

Cut film, roll film, film packs or plates—the Graflex uses any of them. A cut film holder or plate holder is included in the regular price and other attachments are listed below

The Compact Graflex is well known and well respected among critical photographers, both amateur and professional.

#### DETAILS

Dimensions,  $9\frac{1}{2} \times 7 \times 9\frac{1}{2}$  in.; focal capacity,  $12\frac{1}{2}$  in.; weight with lens,  $9\frac{3}{4}$  lbs.; focal length of lens,  $8\frac{1}{2}$  inches.

#### PRICES

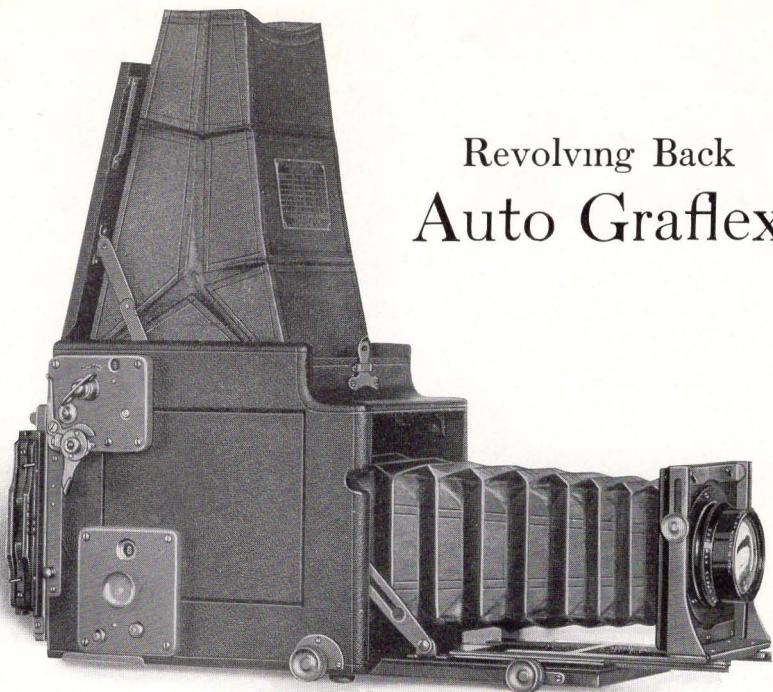
5 x 7

COMPACT GRAFLEX with one cut film holder or one plate holder and Kodak Anastigmat Lens <i>f</i> .4.5, No. 34	\$150 00
Graflex Roll Holder, No. 54	15 00
Graflex Cut Film Holder	3 50
Graflex Cut Film Magazine	17 00
Graflex Plate Magazine	17 00
Graflex Film Pack Adapter	7 50
Graflex Plate Holder	3 50
Kodak Pictorial Diffusion Disk, No. 34	6.00
Ground glass focusing panel, to interchange with holder	7.00
Leather Case for camera and roll holder or cut film magazine	13 50
Leather Case for camera and plate magazine	15.00
Extra Lens Board	.90
Kodak Cut Film, doz.	1.50
Kodak Cut Film <i>Super Speed</i> , doz.	1 65
Kodak Film Pack, No. 515	1.90
Eastman Film Cartridge, 6 exposures, No. 154	95

*The prices of camera and film include the excise tax.*



## Revolving Back Auto Graflex



**A**MBITIOUS photographers select this camera, with good reason. It is the most versatile member of the versatile Graflex family

Its bellows length permits close-ups of actual size—essential in scientific work or nature study and valuable in less specialized fields. Generous bellows draw also allows the use of a long focus anastigmat or of a convertible lens' single element. This means big images of far away subjects. Between these extremes lies a tremendous variety of photographic tasks which this camera easily masters.

On a camera that makes big images, the revolving back is doubly important. The rising front reduces foreground and saves the waste of trimming.

The image can be measured, or studied with a magnifier, on the ground glass focusing panel which is supplied to fit the back.

As on other Graflexes, the reflecting mirror is always an aid, the focal plane shutter has twenty-four speeds—1/10 to 1/1000—a slow exposure of 1/5 and *time*. One cut film holder or one plate holder is regular equipment, roll film or film packs can be used in attachments.

In both sizes,  $3\frac{1}{4} \times 4\frac{1}{4}$  and  $4 \times 5$ , the Revolving Back Graflex is a widely useful camera; and widely used.

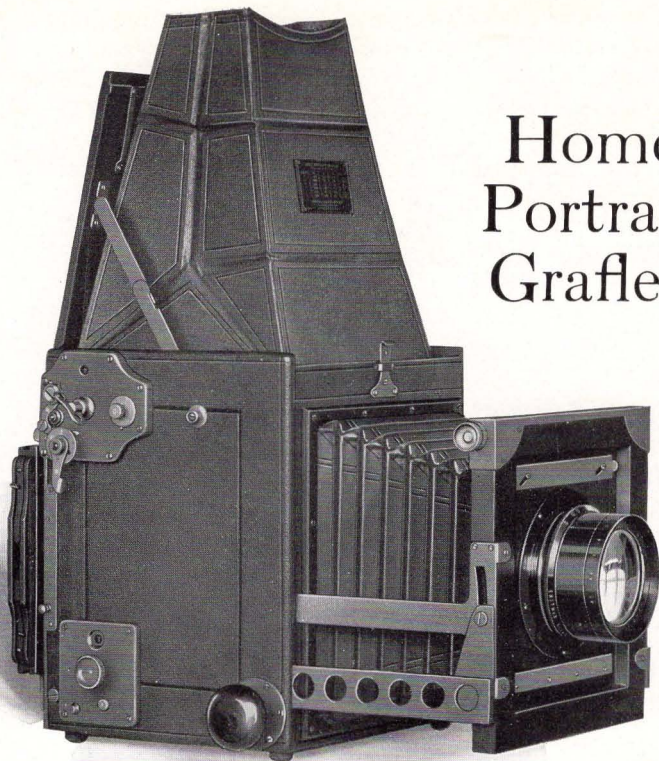
	DETAILS	$3\frac{1}{4} \times 4\frac{1}{4}$	$4 \times 5$
Dimensions		$8\frac{1}{2} \times 5\frac{1}{2} \times 7$	$10 \times 6\frac{1}{4} \times 8$
Bellows capacity		15½ in.	18½ in.
Weight		5¾ lbs.	7 lbs.
Size of lens board		$3\frac{1}{4} \times 3\frac{1}{4}$ in.	$3\frac{3}{4} \times 3\frac{3}{4}$ in.
Minimum focus of lenses accommodated		7½ in.	9 in.
Focal length of lenses listed:			
Kodak Anastigmat <i>f</i> .4.5	No. 33	7½ in.	No. 35 10 in.
B. & L. Tessar, Series Ic, <i>f</i> .4.5	No. 15a	7½ in.	No. 17 9⅞ in.
B. & L. Protar, Series VIIa, <i>f</i> .6.3, complete	No. 10	7⅞ in.	No. 13 9¼ in.
Either element singly	No. 10	13¾ in.	No. 13 16⅝ in.

#### PRICES

	$3\frac{1}{4} \times 4\frac{1}{4}$	$4 \times 5$
REVOLVING BACK AUTO GRAFLEX, without lens, including focusing panel and one cut film holder or one plate holder	\$108.00	\$124.00
With Kodak Anastigmat Lens <i>f</i> .4.5	No. 33 161.00	No. 35 225.00
With B. & L. Tessar Lens, Series Ic, <i>f</i> .4.5	No. 15a 175.50	No. 17 249.00
With B. & L. Protar Lens, Series VIIa, <i>f</i> .6.3	No. 10 203.00	No. 13 249.00
Graflex Roll Holder	No. 51 11.50	No. 53 12.50
Graflex Cut Film Holder	2.50	2.50
Graflex Cut Film Magazine	14.00	15.25
Graflex Plate Magazine	14.00	15.25
Graflex Film Pack Adapter	4.75	5.50
Graflex Plate Holder	2.50	2.50
Kodak Pictorial Diffusion Disk	No. 33 5.00	
Leather Case for camera and roll holder or cut film magazine	10.00	12.25
Leather Case for camera and plate magazine	10.75	13.75
Extra Lens Board	75	90
Kodak Cut Film, doz.	.67	93
Kodak Cut Film <i>Super Speed</i> , doz.	77	1.03
Kodak Film Pack	No. 518 90	No. 523 1.10
Eastman Film Cartridge, 6 exposure	No. 151 45	No. 153 55

*The prices of cameras and film include the excise tax.*

## Home Portrait Graflex



THE home portrait photographer aims to catch the subject in a natural moment. His success often depends on whether his camera can quickly meet the requirements of that moment. This the Home Portrait Graflex will do. It has a swinging front and revolving back supplementing the reflecting mirror and focal plane shutter

As the photographer changes focus and raises, lowers or tilts the lens, he studies the 5 x 7 image in the hood. He trips the shutter at the very instant when the reflected image shows that lighting, composition and expression are right. Such simplicity and certainty are especially valuable when working with children.



Automatic shutter speeds are provided from 1/500 down to one second, the last, with *Super Speed* film, is a frequent substitute for time.

Good perspective is promoted by using the Kodak Anastigmat lens *f*.4.5, of 12-inch focal length. It makes big images at good distance. Bellows capacity is 15 inches.

When the camera must set on a high tripod, the ground glass panel is quickly attached to the revolving back, for focusing from the rear

Cut film, regular or *Super Speed*, is first choice for use with this camera so one cut film holder (or one plate holder) is included. The film pack adapter, plate magazine, roll holder or cut film magazine can be attached.

This camera's chief purpose is to make striking portraits, yet its wide range of speed, splendid lens and revolving back fit it for a considerable variety of commercial uses.

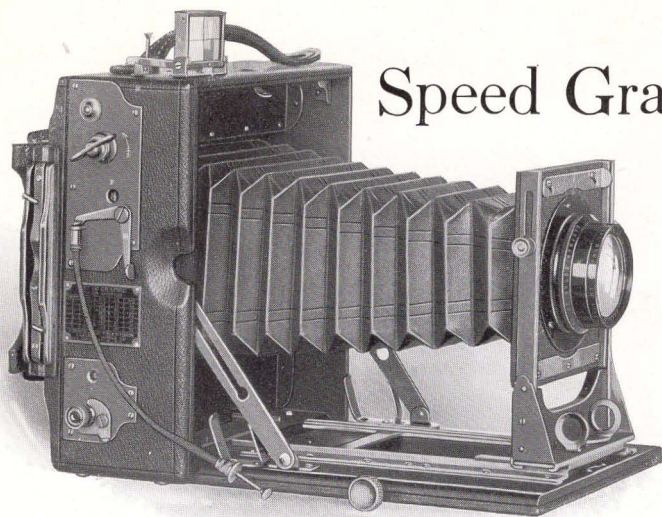
#### DETAILS

Dimensions,  $9\frac{3}{4} \times 9 \times 10\frac{1}{2}$  in.; focal capacity, 15 in.; weight with lens,  $16\frac{3}{4}$  lbs.; size of lens board, 5 x 5 in.; minimum focus of lenses accommodated, 10 inches.

#### PRICES

	5 x 7
HOME PORTRAIT GRAFLEX without lens, including focusing panel and one cut film holder or one plate holder	\$184 00
With Kodak Anastigmat Lens <i>f</i> .4.5, No. 36	344 00
Graflex Roll Holder, No. 54	15 00
Graflex Cut Film Holder	3 50
Graflex Cut Film Magazine	17 00
Graflex Plate Magazine	17 00
Graflex Film Pack Adapter	7 50
Graflex Plate Holder	3 50
Leather Case for camera and roll holder or cut film magazine	22 50
Leather Case for camera and plate magazine	24 00
Extra Lens Board	1 50
Kodak Cut Film, doz.	1.50
Kodak Cut Film <i>Super Speed</i> , doz.	1 65
Kodak Film Pack, No. 515	1 90
Eastman Film Cartridge No. 154, 6 exposures	95

*The prices of camera and film include the excise tax.*



## Speed Graphic

**T**HE Speed Graphic is the aristocrat among folding cameras. It has the Graflex finish, Morocco leather on kiln-dried mahogany; it has the Graflex focal plane shutter and the Kodak Anastigmat lens *f*.4.5.

Press photographers pick this camera for theirs, which indicates its ready adaptability to all sorts of subjects under all sorts of conditions.

Speeds are 1/10 to 1/1000, twenty-four in number, on the 4 x 5 and 3¼ x 5½ models. The 3¼ x 4¼ has eighteen, 1/10 to 1/500.

The Kodak Anastigmat *f*.4.5 is in a removable lens board which fits tightly to a sturdy standard. The front rises, to control foregrounds.

Focusing is done with the ground glass panel, built into the back, or with the scale and finder. The finder is of the direct, eye-level type, and collapsible.

The 4x5 model marketed since May 1, 1924, is of different dimension from its predecessor and is called the 4 x 5 *Special* Speed Graphic. In purchasing a carrying case for this new camera it is

therefore necessary to specify "for 4 x 5 *Special* Speed Graphic."

One cut film holder (plate holder optional) is regularly supplied and a film pack adapter can be attached. Two tripod sockets are provided.

The Speed Graphic is a handsome camera, and popular among judges of good pictures.

#### DETAILS

	3¼ x 4¼	4 x 5	3¼ x 5½
Dimensions	5¾ x 2¾ x 6¼	7¼ x 3½ x 7½	7 x 3½ x 7½
Bellows capacity	10 in.	12 in.	12 in.
Weight	3¼ lbs.	4¾ lbs.	4¾ lbs.
Focal length of lens	5½ in.	6⅜ in.	7½ in.
Closest working distance	12 in.	13 in.	20 in.

#### PRICES

*Including one cut film holder or one plate holder*

	3¼ x 4¼	4 x 5 <i>Special</i>	3¼ x 5½
Speed Graphic with Kodak Anastigmat Lens f.4.5	\$72 00	\$90 00	\$93 00
Graphic Plate Holder	2 00	2 00	2 00
Graphic Cut Film Holder	2 00	2 00	2 00
*Leather Case, with lock and key	8 50	10 00	9 00
Kodak Pictorial Diffusion Disk	No. 31 5 00	No. 32 5 00	No. 33 5 00
Extra Lens Board	75	75	75
Kodak Cut Film, doz.	67	93	93
Kodak Cut Film <i>Super Speed</i> , doz.	77	1 03	1 03
Film Pack Adapter	2 00	2 00	2 00
Kodak Film Pack	No. 518 90	No. 523 1 10	No. 522 1 10

\*Carrying Cases for Speed Graphic Cameras accommodate the camera and holders as follows: 3¼ x 4¼, 5 holders; 4 x 5 *Special*, 6 holders; 3¼ x 5½, 5 holders. In purchasing case for 4 x 5 model marketed since May 1, 1924, specify "for *Special* Speed Graphic."

*The prices of cameras and film include the excise tax.*

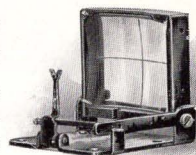
## Graflex Backs for Speed Graphic Cameras

**B**ACKS of Speed Graphic cameras can be altered to take the Graflex Roll Holder (so that Eastman Film Cartridges can be used), Graflex Cut Film Magazine, Graflex Cut Film Holder, Graflex Plate Holder, Graflex Film Pack Adapter and Graflex Plate Magazine. Prices for this alteration, including ground glass focusing panel but no plate holder or film holder, will be quoted on application.



## Graphic Sight Finder

**A** DIRECT VISION, folding sight finder, to be attached to the top of the camera. The subject is centered on the image area when the intersection of the lines engraved on the finder lens is in direct line with the notch in the top of the vertical sight bar

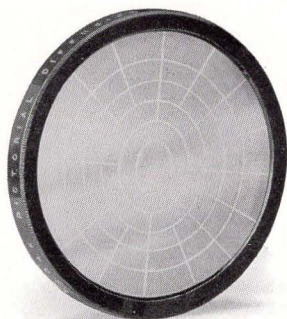


The Graphic Sight Finder folds compactly, and opens automatically at the release of a spring catch.

### PRICES

	3¼ x 4¼	3¼ x 5½	4 x 5	5 x 7
Graphic Sight Finder	\$3 50	\$4 00	\$4 00	\$5 00

## Kodak Pictorial Diffusion Disk



**T**HIS new auxiliary lens produces a soft, blended effect in the negative without the loss of brilliance that results when the image is thrown out-of-focus. Detail is sharp as ever, but toned down.

Now that it is obtainable this attachment is almost a necessity for photographing landscapes. And it is entirely suited for close-up work, as well, where softened lines will add to the attractiveness of the picture.

A Kodak Pictorial Diffusion Disk slips easily on or off the lens. Disks are now available to fit four of the Kodak Anastigmat lenses *f.4.5*. Order by number

### PRICES

No. 31 Kodak Pictorial Diffusion Disk for No. 31 Kodak Anastigmat <i>f.4.5</i>	\$5 00
No. 32 Kodak Pictorial Diffusion Disk for No. 32 Kodak Anastigmat <i>f.4.5</i>	5 00
No. 33 Kodak Pictorial Diffusion Disk for No. 33 Kodak Anastigmat <i>f.4.5</i>	5 00
No. 34 Kodak Pictorial Diffusion Disk for No. 34 Kodak Anastigmat <i>f.4.5</i>	6 00

## Kodak Cut Film

**L**IGHT weight, small bulk, safety from breakage these are physical properties that make Kodak Cut Film so pleasant to work with. What is more, it produces superior negatives because it is non-halation and meets every standard for fineness of grain, latitude and gradation.

Kodak Cut Film is as sensitive as the best portrait plates, and Kodak Cut Film *Super Speed* has a much faster emulsion.

*Super Speed* is the film to use when the subject requires a short exposure or when the light is difficult. For indoor story-telling pictures and portraits, for snapshots in dull light, it is especially valuable. And on easier occasions the protection that its extra speed offers against underexposure is still worth while.

Kodak Cut Film can be used in a cut film holder, the Graflex Cut Film Magazine, or, with sheaths, in any plate holder

### PRICES

	$2\frac{1}{4} \times 3\frac{1}{4}$	$3\frac{1}{4} \times 4\frac{1}{4}$	$3\frac{1}{4} \times 5\frac{1}{2}$	4 x 5	5 x 7
Kodak Cut Film, doz.	\$0 46	\$0 67	\$0 93	\$0 93	\$1 50
Kodak Cut Film <i>Super Speed</i> , doz.	52	77	1 03	1.03	1 65

*Prices of Kodak Cut Film include the excise tax*

## Kodak Cut Film Sheath

Adapts a plate holder to the use of Kodak Cut Film. It is made of aluminum, ribbed to insure a uniform focal plane. Instantly inserted or removed.

### PRICES

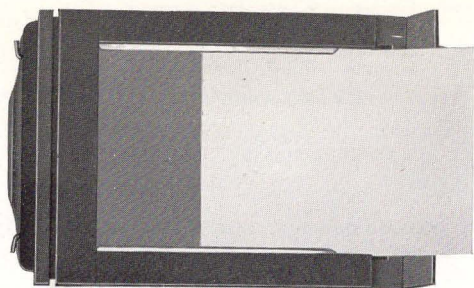
	$2\frac{1}{4} \times 3\frac{1}{4}$	$3\frac{1}{4} \times 4\frac{1}{4}$	$3\frac{1}{4} \times 5\frac{1}{2}$	4 x 5
Kodak Cut Film Sheath	\$ 10	\$ 10	\$ 15	\$ 15

## No. 3 Eastman Film Sheath

For adapting 5 x 7 and  $6\frac{1}{2} \times 8\frac{1}{2}$  plate holders to the use of cut film.

### PRICES

	5 x 7	$6\frac{1}{2} \times 8\frac{1}{2}$
No. 3 Eastman Film Sheath	\$ 20	\$ 25



## Graflex Cut Film Holder

**A**LTHOUGH the Graflex Cut Film Holder looks, and attaches, like a plate holder, the two are quite different in design and operation.

When the dark slide is withdrawn, the end of the frame opens on a hinge as shown in the above illustration. The film slips in or out smoothly, making loading and unloading easy indeed. And the film stays flat, held in narrow channels, the sensitized surface forming a uniform focal plane.

With this device, cut film advantages are available to the user of any Graflex except the 1A and 3A Autographic models, which take cartridge film only

### PRICES

	$2\frac{1}{4} \times 3\frac{1}{4}$	$3\frac{1}{4} \times 4\frac{1}{4}$	$3\frac{1}{4} \times 5\frac{1}{2}$	$4 \times 5$	$5 \times 7$
Graflex Cut Film Holder	\$1 75	\$2 50	\$2 50	\$2 50	\$3 50

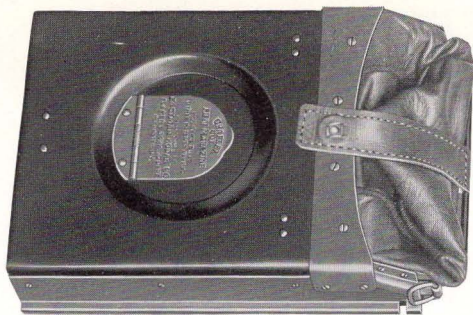
## Graflex Plate Holder

Prices given for Graflex Cut Film Holders apply also to the corresponding sizes of Graflex Plate Holders.

## Holders for Use on Graphic Cameras

Cut film holders and plate holders for Speed Graphic Cameras are listed on page 23.





## Graflex Cut Film Magazine

**A**N attachment that arms the Graflex for a dozen exposures without reloading. It carries twelve films, ready for use, each in a metal septum. By means of a sliding rod, the septum containing an exposed film is drawn into a light-tight leather bag (shown folded) and re-inserted behind the other films.

Each septum bears a numeral so that the number of exposures made since loading can be quickly told by looking through the ruby window that lies underneath the small spring flap on the back.

The Graflex Cut Film Magazine can be detached from the camera at any time and one or more films removed in a darkroom without waiting for all twelve to be exposed. When the camera is placed in its case, the magazine stays right in position—ready

### DETAILS

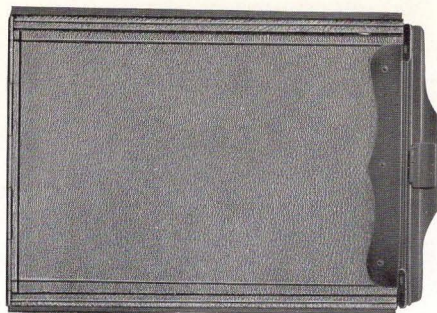
	$2\frac{1}{4} \times 3\frac{1}{4}$	$3\frac{1}{4} \times 4\frac{1}{4}$	$3\frac{1}{4} \times 5\frac{1}{2}$	$4 \times 5$	$5 \times 7$
Dimensions	$5\frac{1}{8} \times 3\frac{1}{4} \times 1\frac{3}{8}$	$6\frac{1}{4} \times 4\frac{1}{4} \times 1\frac{3}{8}$	$7\frac{5}{8} \times 3\frac{7}{8} \times 1\frac{5}{8}$	$7 \times 5 \times 1\frac{5}{8}$	$9\frac{1}{4} \times 6\frac{1}{4} \times 1\frac{5}{8}$
Weight loaded	12 oz.	18 oz.	1 $\frac{1}{2}$ lbs.	1 $\frac{1}{2}$ lbs.	2 $\frac{1}{2}$ lbs.

### PRICES

	$2\frac{1}{4} \times 3\frac{1}{4}$	$3\frac{1}{4} \times 4\frac{1}{4}$	$3\frac{1}{4} \times 5\frac{1}{2}$	$4 \times 5$	$5 \times 7$
Graflex Cut Film Magazine	\$12 00	\$14 00	\$15 25	\$15 25	\$17 00

## Graflex Plate Magazine

This attachment is similar to the Graflex Cut Film Magazine, but is necessarily bulkier, and heavier when loaded. Prices are the same as for the Graflex Cut Film Magazine.



## Graflex Film Pack Adapter

WITH this attachment in use, the Graflex, unless it is a 1A or 3A Autographic, loads in daylight with Kodak Film Packs. Twelve exposures can be made without reloading; the Film Pack Tank (see page 31) provides easy means of developing several films at once.

The Graflex Film Pack Adapter is covered with leather like that found on Graflex cameras themselves.

### PRICES

	$2\frac{1}{4} \times 3\frac{1}{4}$	$3\frac{1}{4} \times 4\frac{1}{4}$	$3\frac{1}{4} \times 5\frac{1}{2}$	$4 \times 5$	$5 \times 7$
Graflex Film Pack Adapter	\$4 50	\$4 75	\$5 50	\$5 50	\$7 50

## Kodak Film Packs

EACH pack contains twelve non-curling, non-halation, properly orthochromatic films. Single films can be taken from the pack in a darkroom without waiting until all are exposed.

After each picture a paper tab is withdrawn and torn off, uncovering an unused film, ready for the next subject. Thus, as many as a dozen exposures can be made in quick succession.

### PRICES

$2\frac{1}{4} \times 3\frac{1}{4}$	$3\frac{1}{4} \times 4\frac{1}{4}$	$3\frac{1}{4} \times 5\frac{1}{2}$	$4 \times 5$	$5 \times 7$
No. 520, \$0 50	No. 518, \$0 90	No. 522, \$1 10	No. 523, \$1 10	No. 515, \$1 90

*The prices of Kodak Film Packs include the excise tax.*



## Graflex Roll Holder

**Q**UICKLY attached to any Graflex (except the 1A and 3A Autographic models), this device permits the use of Eastman Film Cartridges. The advantages are obvious the film is loaded in daylight and can be daylight-developed in a Kodak Film Tank.

The current Graflex Roll Holder is an improved model in which the spools stay parallel and friction is avoided. A retarding ratchet keeps the film flat and taut. After inserting the dark slide the holder can be detached and re-attached between exposures but the camera goes into the case without its removal.

### PRICES

#### GRAFLEX ROLL HOLDERS

$3\frac{1}{4} \times 2\frac{1}{4}$	For Eastman Film Cartridge No. 150	\$11 00
$4\frac{1}{4} \times 3\frac{1}{4}$	For Eastman Film Cartridge No. 151	11 50
$5\frac{1}{2} \times 3\frac{1}{4}$	For Eastman Film Cartridge No. 152	12 50
$5 \times 4$	For Eastman Film Cartridge No. 153	12 50
$7 \times 5$	For Eastman Film Cartridge No. 154	15 00

Graflex Roll Holders fit Graflex cameras only

## Eastman Film Cartridges

#### FOR GRAFLEX ROLL HOLDERS

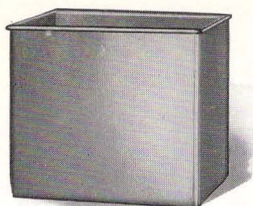
No. 150, $3\frac{1}{4} \times 2\frac{1}{4}$ , 6 Exposures	\$ 0 25
No. 151, $4\frac{1}{4} \times 3\frac{1}{4}$ , 6 Exposures	45
No. 152, $5\frac{1}{2} \times 3\frac{1}{4}$ , 6 Exposures	55
No. 153, $5 \times 4$ , 6 Exposures	55
No. 154, $7 \times 5$ , 6 Exposures	95

To avoid error, order film by number.

*The prices of Eastman Film Cartridges include the excise tax.*



## Kodak Developing Box No. 1



UNIFORM development of Kodak Cut Film by the time and temperature method is quick and easy with this box. It is made of incorrodible metal and measures  $4 \times 5\frac{1}{4} \times 6$  inches.

Twelve  $2\frac{1}{4} \times 3\frac{1}{4}$ ,  $3\frac{1}{4} \times 4\frac{1}{4}$ ,  $3\frac{1}{4} \times 5\frac{1}{2}$  or  $4 \times 5$  films, each in a Kodak Cut Film

Developing Hanger, can be developed at one time.

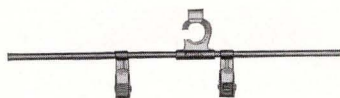
### THE PRICE

Kodak Developing Box No. 1, without hangers

\$2 00

## Kodak Cut Film Developing Hanger

THIS hanger is nine inches long so that it lies securely across the six-inch top of a Kodak Developing Box No. 1. Each film is gripped by two easily operated, incorrodible metal clips.



### THE PRICE

Kodak Cut Film Developing Hanger, each

\$ 20

## Eastman Developing and Fixing Box

For the larger sizes of cut film. During development or fixing, the films are suspended in Eastman Film Developing Hangers No. 4. The box is made of hard rubber

### PRICES

Eastman Developing and Fixing Box	No. 2 for 8 5 x 7 films	No. 3 for 20 5 x 7 or 12 $6\frac{1}{2} \times 8\frac{1}{2}$ films
	\$4 00	\$6 00

## Eastman Film Developing Hanger No. 4

A strong, light metal frame, which holds the film securely in channels, without clips.

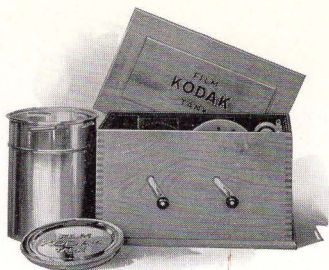
### PRICES

Eastman Film Developing Hanger No. 4	5 x 7	$6\frac{1}{2} \times 8\frac{1}{2}$
	\$ 60	\$ 75

## Kodak Film Tank

FOR daylight development of Eastman Film Cartridges used in Graflex Roll Holders, and of Kodak Film, used in the 1A and 3A Autographic Graflex cameras.

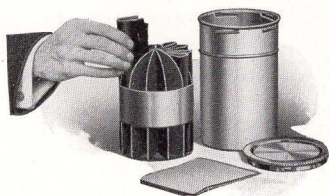
Each exposure on the roll yields its best by this method.



### PRICES

3½-inch Kodak Film Tank, for 3¼ x 5½ (3A) Kodak Film, 2½ x 4¼ (1A) Kodak Film and 3¼ x 2¼ Eastman Film Cartridge No. 150	\$6 50
5-inch Kodak Film Tank, for 4¼ x 3¼ Eastman Film Cartridge No. 151	8 00
7-inch Kodak Film Tank, for 5½ x 3¼ Eastman Film Cartridge No. 152, 5x4 Eastman Film Cartridge No. 153 and 7x5 Eastman Film Cartridge No. 154	10 00

## Film Pack Tank



A DIVIDED metal cage and cup comprise this outfit for developing all or part of a film pack at one time.

In loading, each film is slipped into a compartment, as shown. The cage is then lowered into the developer that is contained in the solution cup, which is light-tight when covered.

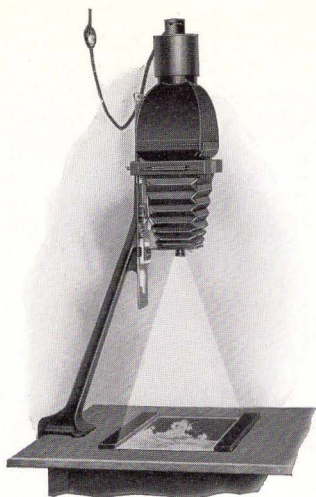
By following the time and temperature method, negatives of uniform quality are produced.

The Film Pack Tank is made in three sizes. Two are designed to hold twelve films, the third holds six 5 x 7 films.

### PRICES

Film Pack Tank No. 1, for twelve 2¼ x 3¼ films	\$1 75
Film Pack Tank No. 2, for twelve 3¼ x 4¼, 3¼ x 5½, or 4 x 5 films	3 50
Film Pack Tank No. 3, for six 5 x 7 films	4 00

## Kodak Auto-Focus Enlarger



**B**IG prints bring out the full charm of sharp negatives. And they are easy to make, with the Kodak Auto-Focus Enlarger. Racking and pulling are eliminated. As the camera is raised or lowered to change the size of the image, a cam keeps the focus exactly sharp.

The mechanism is so simple and accurate that enlarging with this equipment is fully as easy and almost as fast as contact printing.

A padded clamp attaches the Kodak Auto-Focus Enlarger to any ordinary table. A quickly adjusted holder keeps the bromide paper in position without the use of tacks or clips.

Prints from  $1\frac{1}{2}$  to  $3\frac{1}{2}$  diameters can be made from either plate or film negatives up to 4 x 6 inches. The largest possible print is 14 x 21 inches. A Vest Pocket Kodak negative will make a  $5\frac{5}{8}$  x  $8\frac{3}{4}$  enlargement, a  $2\frac{1}{4}$  x  $3\frac{1}{4}$  negative will produce a  $7\frac{7}{8}$  x  $11\frac{3}{8}$  enlargement.

The lens is a Kodak Anastigmat, which assures sharp definition in the enlargement. A special diffusing disc is supplied separately, for obtaining soft focus effects.

### PRICES

*including excise tax*

Kodak Auto-Focus Enlarger with Kodak Anastigmat lens, electric cord and plug (without lamp), set of six flexible metal masks	\$35 00
Diffusing Disc, for soft focus effects	1 00

## Eastman Bromide Papers

Following are prices per dozen of the most popular of the sixteen sizes in which Eastman Bromide Papers, double weight, are listed

### PRICES

5 x 7—\$0.60	$6\frac{1}{2}$ x $8\frac{1}{2}$ —\$1.00	7 x 11—\$1.40	8 x 10—\$1.40
10 x 12—\$2.15	11 x 14 —\$2.65	14 x 17—\$3.95	16 x 20—\$5.25



## The Kodak Album



**L**OOSE-leaf, open-back style. Cover made of finest quality genuine leather and surfaced in new patterns—the black in an etched crystalline; the blended olive a pine needle effect. Stamped in gold leaf with the word “Photographs.” Fifty

black, round-cornered leaves held in place with silk-finished cord through cover and metal tubes.

5 x 8, RA, Black Crystline, \$2.25  
7 x 11, RB, Black Crystline, 3.25  
10 x 12, RC, Black Crystline, 4.50  
11 x 14, RD, Black Crystline, 5.50

SA, Olive Pine Needle, \$2.25  
SB, Olive Pine Needle, 3.25  
SC, Olive Pine Needle, 4.50  
SD, Olive Pine Needle, 5.50

Package of 12 extra leaves, Size A (5 x 8) \$0.15; Size B (7 x 11) \$0.18;  
Size C (10 x 12) \$0.30; Size E (11 x 14) \$0.40

## The Kodagraph Album

**L**OOSE-leaf, open-back style. Choice of genuine leather cover in black with etched surface, or in dark brown with alligator finish. The word “Kodagraphs” is stamped in gold on cover. A good looking, substantial album.



BB, 7 x 11 Black Leather \$3 00  
BD, 11 x 14 Black Leather 5 00

AB, Brown Alligator \$3 00  
AD, Brown Alligator 5 00

Package of 12 extra leaves, Size B, 7 x 11, \$0.18; Size E, 11 x 14, \$0.40

## The Altadena Album



**L**OOSE-leaf, open-back style. Cover is de luxe artificial leather, deep brown, Morocco grain finished. The word “Photographs,” brought up in heavy engraving, and the deeply embossed panels at each end add finish to this handsome album.

Fifty black leaves held in place by silk-finished cord through cover and metal tubes.

A, 5 x 8

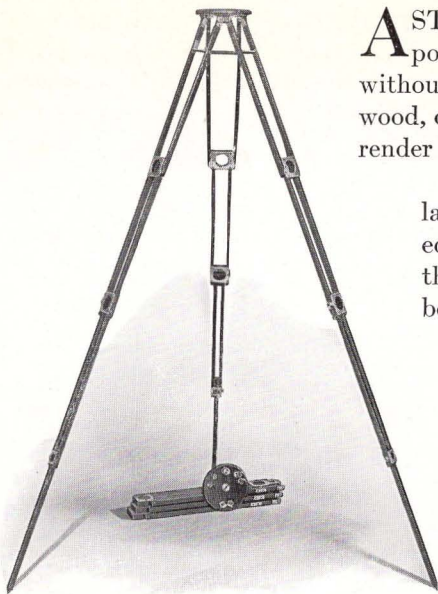
\$1 50

B, 7 x 11

\$2 00

Package of 12 extra leaves, Size A (5 x 8) \$0.15; Size B (7 x 11) \$0.18

## Crown Tripod



A STRONG, rigid, telescopic tripod that holds a heavy camera without vibrating. Made of cherry wood, oil soaked, then shellacked to render it waterproof.

The head of this tripod is large and substantial. Near its edge is a second screw socket so that the weight of a camera can be properly balanced when the bellows is extended.

Expansion brackets keep the legs firmly attached when in use; binding screws cannot be lost, joints fit snugly. A well-designed, and sturdily built tripod.

### DETAILS

Length closed	Length extended	Weight	Diameter of top	Weight of camera carried
No. 1—16 in.	4 ft. 4 in.	36 oz.	4 in.	6 lbs.
No. 2—17 in.	4 ft. 8 in.	65 oz.	6 in.	9 lbs.
No. 4—20 in.	5 ft. 6 in.	90 oz.	6½ in.	18 lbs.

### PRICES

Crown Tripod

No. 1, \$9 00    No. 2, \$10 00    No. 4, \$12 50

## Carrying Case for Crown Tripods

A sole leather case consisting of a long compartment for the Crown Tripod legs, and a smaller compartment to hold the tripod top. Made for Crown Tripods Nos. 1 and 2 only.

### PRICES

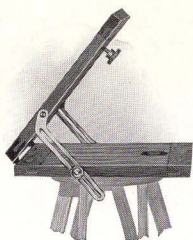
No. 1, for Tripod No. 1

\$6.00

No. 2, for Tripod No. 2

\$7 25

## Crown Tilting Tripod Top



WITH this device in use on a Crown Tripod, the camera can be pointed upward or downward, at any angle from horizontal to vertical, without adjusting the tripod legs.

### PRICES

No. 1 Crown Tilting Tripod Top, for 4 in. head \$2 75  
 No. 2 Crown Tilting Tripod Top, for 6 in. head 3 00  
 No. 4 Crown Tilting Tripod Top, for 6½ in. head 3 50

## Eastman Metal Trimmer No. 10

A STURDY trimmer that cuts easily and precisely. Its table measures ten inches each way, is engraved in squares, has a brass ruler and a transparent trimming guide.



### THE PRICE

Eastman Metal Trimmer No. 10, finished in polished enamel

\$15 00

## Kodak Amateur Printer



A SELF-CONTAINED outfit for making white margin prints from film negatives of any size from 1½ x 2½ up to 4 x 5½ inches. A small ruby bulb within the box provides light by which to adjust film, mask and paper, and latching the hinged pressure board automatically turns on a 60-watt Mazda lamp for the exposure. The position of this lamp can be changed

to give even illumination on negatives of various sizes. An orange window in the side serves as a safelight while developing prints.

### THE PRICE

Kodak Amateur Printer, with complete electrical equipment except 60-watt Mazda bulb

\$10 00



# Velox

## *“Look for VELOX on the back”*

VELOX paper brings out the best that is in a negative and often produces a better print than the negative itself promises. It partially corrects for error in exposure and compensates considerably for the uncontrolled lighting by which the amateur works.

Velox can do this because its four degrees of contrast cover a range which permits emphasizing or subduing the character of the negative in printing. It is the only photographic paper manufactured for use with amateur negatives exclusively

GRADE	SURFACE	CONTRAST
Velvet Velox	Semi-Gloss	1 *2 *3 4
Portrait Velox	Smooth Matte	2
Carbon Velox	Matte	1 2 3 4
Glossy Velox	Enameled	1 *2 *3 4

\*Furnished also in Double-weight Velox. Double-weight papers require no mount and when printed under a mask, which will insure a white margin, offer a very artistic effect.

Each sheet bears the name “Velox” faintly tinted on the back, to indicate that the paper best suited for amateur negatives has been used.

Velox is a non-abrasion, developing-out paper. Each degree of contrast is offered in a variety of surfaces as listed in the table above.

Extremely contrasty negatives give best results on No. 1, average and also contrasty negatives print well with No. 2, flat negatives require No. 3, exceedingly thin or exceedingly flat negatives produce good prints on No. 4.

Of the four grades of Velox, the most used is Velvet, which gives semi-gloss prints of splendid quality and tone.

### PRICES

Size Inches	Single Weight			Double Weight		
	Dozen	½ Gross	Gross	Dozen	½ Gross	Gross
1½ x 2½	\$0.12		\$1.10	\$0.15		\$1.40
2½ x 3½	12		1 10	15		1 40
2½ x 4½	15		1 35	20		1 70
3½ x 4½	.20		1 75	.25		2 20
2½ x 4½	.20		1 75	.25		2 20
3½ x 5½	.20		2 00	.25		2 50
4 x 5	.25		2 30	.30		2 90
5 x 7	40	\$2.10	3 90	.50	\$2.60	4 90
Velox Post-cards, 3½ x 5½, furnished in Velvet, Contrasts Nos. 2 and 3 and in Glossy, Contrasts Nos. 2 and 3				.30	1.50	2.90
Velox Double Post-cards, 3½ x 10½ inches				.60	3.00	5.80

## Velox Sundries

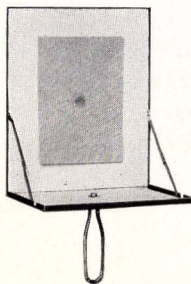
Eastman M. Q. Developer per package of 5 tubes	\$0 30
Nepera Solution, per 4-ounce bottle	28
Ditto, per 16-ounce bottle	84
Nepera Auxiliary Powders (for converting Nepera Solution to a film or plate developer), per package, 1 dozen	35
*Velox Re-developer Tubes, for sepia toning, per package 12 tubes	1 08
Velox Liquid Hardener, per 4-ounce bottle	25
Ditto, 8-ounce bottle	35
Kodak Acid Fixing Powder for fixing Velox prints, per pound	25
Ditto, $\frac{1}{2}$ pound	15
Ditto, $\frac{1}{4}$ pound	10

\*Package includes bleaching agent.

## Flashlight Materials

**F**LASHLIGHT equipment makes the amateur photographer independent of daylight by providing easily controlled, artificial illumination. He can throw the right amount of light in the right direction.

The simplest method of making flashlight pictures is by means of the Eastman Flash Sheets and Kodak Flash Sheet Holder. The sheets burn slowly, giving a broad soft light, while the holder makes their proper use conveniently easy.



No. 1 Flash Sheets, per package of $\frac{1}{2}$ dozen sheets, 3 x 4-inch	\$0 35
No. 2 Flash Sheets, per package of $\frac{1}{2}$ dozen sheets, 4 x 5-inch	56
No. 3 Flash Sheets, per package of $\frac{1}{2}$ dozen sheets, 5 x 7-inch	84
Kodak Flash Sheet Holder	1 25

Flash cartridges are recommended only where instantaneous exposures are required.

Eastman Spreader Flash Cartridges, for use with pistol or fuse (price includes both fuse and cap), per package of $\frac{1}{2}$ dozen	\$0 60
Eastman Spreader Flash Cartridge Pistol	1 50
Eastman No. 1 Flash Cartridges, for use only with fuse, per package of $\frac{1}{2}$ dozen	1 25
Ditto No. 2	80
Ditto No. 3	50

## Eastman Safelight Lamp



**T**HIS well-built metal lamp hangs from an electric cord or fixture, takes a 10-watt bulb and is especially recommended for use over work table and trays. Unless otherwise specified the 5 x 7 Safelight supplied is of Series 2, for use with films or plates.

### PRICES

Eastman Safelight Lamp, without bulb

\$ 3.00

Extra Safelight, 5 x 7 any series

75

## Kodak Safelight Lamp

**A** CONVENIENT lamp by which to examine negatives during development. Made of durable metal, white enameled inside. Electric fittings, except the 25-watt bulb, are included.

A 5 x 7 Safelight, Series 1, for use with films or plates not color sensitive, is supplied unless otherwise ordered.



### PRICES

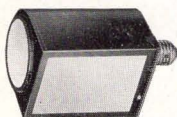
Kodak Safelight Lamp, without bulb

\$ 3.50

Extra Safelight, 5 x 7 any series

75

## Brownie Safelight Lamp



**T**O fit over a 10-watt bulb and screw into any electric socket. Contains Series 1 Safelight, unless otherwise ordered, in end and side.

### PRICES

Brownie Safelight Lamp, without bulb

\$ 1 75

Extra Circular End Safelight, any series

25

Extra Rectangular Safelight, any series

40



## Safelights

Available for safelight lamps described on the opposite page

Series 00—Yellow light, for use with developing-out papers.

Series 0 —Bright orange light, for use with bromide paper and lantern plates.

Series 1 —Orange safelight, for use with films or plates not highly color sensitive.

Series 2 —Safelight for extra rapid orthochromatic plates sensitive to green but not red.

Series 3 —Green safelight, for use with red-sensitive panchromatic plates.

Series 4 —Bright green safelight, for use with ordinary plates, for those who cannot use a red light. Not safe for orthochromatic plates.

## Kodak Anastigmat *f* 4.5

**T**HIS lens is an optical gem, formulated by Eastman scientists, made by Eastman craftsmen, tested by Eastman experts.

For definition and flatness of field it is the peer of any lens in the world, regardless of price. Even at full aperture it cuts sharply, clear to the margins. Throughout the image area, Kodak Anastigmat negatives have that brilliance and sparkle which mean quality in the contact print and character in the enlargement.

Kodak Anastigmat *f* 4.5 is the proper lens for ambitious photography. It admits so much light that ample exposure is easy; it widens the picture possibilities of the camera to which it is fitted.

Each Kodak Anastigmat *f* 4.5 is mounted as shown in the illustration, complete with an iris diaphragm controlled by a milled ring on which the *f* markings are engraved.



No.	Size of Film covered with Stop <i>f</i> 4.5 Inches	Equivalent Focus in Inches	Price, including excise tax, of Lens in barrel with Iris Diaphragm
30	2¼ x 3¼	4¾	\$ 33 00
31	3¼ x 4¼	5½	37 50
32	4 x 5	6¾	43 50
33	5 x 7	7½	53 50
34	5 x 8	8½	66 50
35	6½ x 8½	10	115 00
36	8 x 10	12	160 00

## Tested Chemicals



**C**ERTAINTY in making negatives and prints depends as much on the quality of your chemicals as on any other one thing. All Kodak chemicals are tested, both photographically and for purity, before the E. K. C. tested seal is allowed to go on them.

Eastman Chemical Outfit consists of M. Q. and Special Developers,	
Intensifier, Reducer and Velox Re-developer	\$0. 40
Eastman Special Developer Powders, per package of 5, in sealed glass tubes	35
Eastman M. Q. Developer, per package of 5 tubes	30
Eastman Hydrochinon Developer Powders, per 1/2 dozen	30
Ditto, per package of 5 powders, in sealed glass tubes	30
Eastman Pyro Developer Powders, per 1/2 dozen	25
Ditto, per package of 5 powders, in sealed glass tubes	25
Eastman Tropical Developer, 5 powders, in sealed glass tubes	40
Tozol, per 1-ounce bottle	45
Elon, per 1-ounce	55
Kodolon, per 1-ounce	47
Hydrochinon, per 1-ounce can	23
Eastman Permanent Crystal Pyro, per 1-ounce bottle	27
Velox Re-developer tubes, package of 12 tubes	1. 08
Hyposulphite of Soda, granular, per pound	18
Alum, powdered, per pound	20
Kodak Acid Fixing Powder, per pound package	25
Ditto, per 1/2-pound package	15
Ditto, per 1/4-pound package	10
Eastman Intensifier, per glass tube	15
Eastman Reducer and Stain Remover, per box of 5 tubes	50
Eastman Opaque No. 1, per tube	25
Potassium Bromide, granular, per ounce	13
Acetic Acid 28 per cent pure, per 1-pound bottle	35
Citric Acid, 4-ounce bottle	38
Eastman Tested Carbonate of Soda (desiccated), per 1-pound bottle	40
Eastman Tested Sulphite of Soda (desiccated), per 1-pound bottle	45
For Velox preparations, see page 37	

## Terms

**T**HE prices in this catalogue are strictly net, except to regular dealers who carry our goods in stock. These prices are, however, subject to change without notice. For the convenience of our customers, we recommend that they make their purchases from a dealer in photographic goods, as by so doing they can save both transportation charges and time.

**EASTMAN KODAK COMPANY**

*Folmer & Schwing Department*

ROCHESTER, N. Y





—FROM—  
**WM. F. UHLMAN**  
PHOTOGRAPHIC SUPPLIES  
**ST. JOSEPH, - MO.**