



PREMO CAMERAS

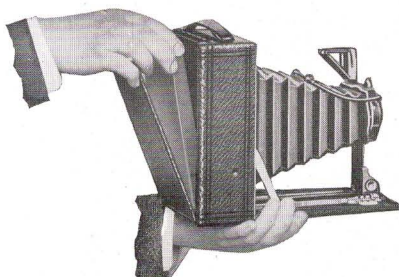
1918



MANUFACTURED BY
ROCHESTER OPTICAL DEPARTMENT
EASTMAN KODAK CO.
ROCHESTER, NEW YORK

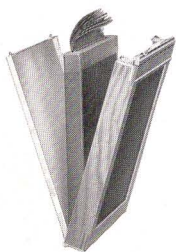
PREMO CAMERAS

Have been manufactured and have given continuous good service to the public for over thirty years. They not only have these long years of keen manufacturing experience behind them, but are also backed by the policy of the Eastman Kodak Co. of allowing nothing to be placed on the market which will not do all that is claimed for it. Anyone interested in amateur photography will find listed in this catalogue a line of plate, film pack, and roll film cameras from which a most satisfactory choice can be made, no matter what the requirements may be, and each model is efficient and dependable in the fullest sense of those terms.



THE simplicity of operation and practical advantages afforded by Premo Cameras and the Premo Film Pack, should not be overlooked by anyone about to take up the enjoyable recreation of photography, or those who wish to add another practical camera to their equipment.

Light and compact beyond all cameras for the same size picture, Premos are made upon such a simple principle that every operation from loading to changing the film, can be performed more easily and quickly than with any other type of camera. To load, merely open the hinged back of the camera; drop in the Premo Film Pack, close the back and draw the safety cover, protecting the first exposure. The films are changed for successive exposures by drawing out the consecutively numbered tabs. To unload, open the back and remove the Film Pack, which is automatically rendered light tight when the last tab is drawn.



With the Premo Film Pack Adapter, plate Cameras may readily be converted into daylight loading instruments, providing all the convenience afforded by the use of film, and the advantage of accurately focusing and composing every picture before exposure.

For the benefit of Premo customers who wish to use roll film, several models of Premos that take the regular Eastman N. C. Film Cartridges, have been provided.

ROCHESTER OPTICAL DEPARTMENT,

EASTMAN KODAK CO.,

ROCHESTER, N. Y.

Premo Junior



THIS camera requires no focus or estimating of distances, and the shutter is always ready for immediate action. Open the back, drop in the pack, draw the safety cover, and the camera is ready for the first exposure.

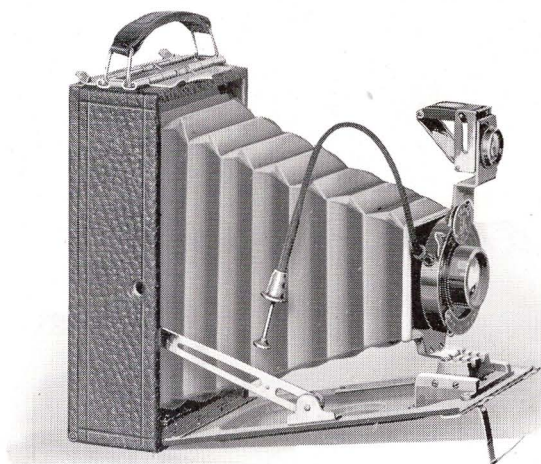
This simplicity of operation, combined with the low price, makes the Premo Junior especially suitable for boys and girls, but the care taken in its construction, and in the selection of lenses, recommend it to anyone desiring a reliable camera of the fixed focus type.

Specifications: Capacity: 12 exposures without reloading. Size of Camera: No. 1, $3\frac{1}{8} \times 4\frac{1}{2} \times 5\frac{3}{4}$ in.; No. 1A, $3\frac{1}{2} \times 5\frac{1}{2} \times 5\frac{7}{8}$ in.; No. 3, $4 \times 5\frac{1}{2} \times 5\frac{3}{4}$ in. Weight: No. 1, 11 ozs.; No. 1A, 14 ozs.; No. 3, 20 ozs. Shutters: Rotary Automatic, with diaphragm stops. Lens: No. 1, Meniscus; Nos. 1A and 3, Meniscus Achromatic. Finders: two. Tripod Sockets: two.

PRICES

	No. 1 $2\frac{1}{4} \times 3\frac{1}{4}$	No. 1A $2\frac{1}{2} \times 4\frac{1}{4}$	No. 3 $3\frac{1}{4} \times 4\frac{1}{4}$
Premo Junior, as per specifications . . .	\$ 2.75	\$ 3.50	\$ 4.50
Carrying Case, . . .	1.10	1.25	1.35
Premo Film Pack (12 exposures)40	.50	.70
Kodak Portrait Attachment (See page 41)50	.50	.50

Premoette Junior



THE Premoette Junior folds into such compact form that it may be conveniently carried in the pocket, and clearly defined pictures of excellent quality may be made upon Premo Film Packs, which provide the utmost simplicity of loading, unloading and changing the exposed film.

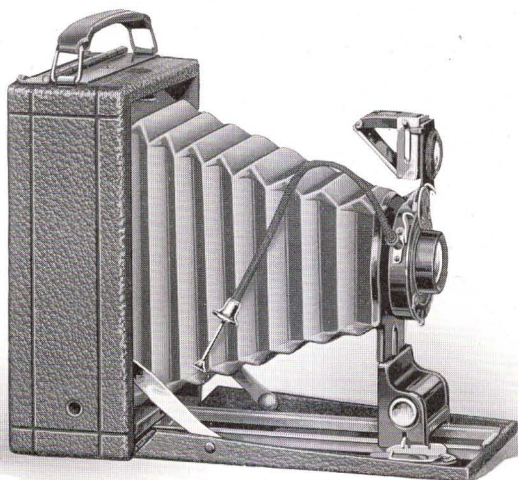
The camera is furnished in two sizes, with a choice of three different lens equipments, which are thoroughly tested before they are fitted to the cameras. Both models are covered with genuine grain leather, and are carefully finished in every detail.

Specifications: PREMOTETTE JR. No. 1. Dimensions: $1\frac{1}{2} \times 3 \times 4\frac{3}{4}$ in. Weight: 12 ozs. Finder: collapsible, reversible, brilliant. Tripod Sockets: two. PREMOTETTE JR. No. 1A. Dimensions: $1\frac{3}{4} \times 3\frac{1}{4} \times 5\frac{3}{4}$ in. Weight: 18 ozs.

PRICES

	No. 1 $2\frac{1}{4} \times 3\frac{1}{4}$	No. 1A $2\frac{1}{2} \times 4\frac{1}{4}$
Premoette Jr. with Meniscus Achromatic Lens and Kodak Ball Bearing Shutter	\$ 6.50	\$ 8.00
Ditto, with Planatograph Lens	8.50	10.00
Ditto, with Kodak Anastigmat Lens, <i>f</i> .7.7	14.50	16.00
Carrying Case (sole leather)	1.60	2.40
Premoette Jr. Special with Bausch & Lomb Kodak Anastigmat Lens, <i>f</i> .6.3, and Compound Shutter	39.50	44.50
Grain Leather Carrying Case	2.40	2.75

Premoette Senior



DESIGNED to provide for the most popular amateur sizes of pictures, the Premoette Senior also embodies the advantages of compactness, simplicity of operation, and standard lens equipments. It is supplied with either R. R. Lens or the Kodak Anastigmat, $f.7.7$, and is especially recommended with the Anastigmat. The definition and covering power of this lens is equal to any anastigmat made, and has a higher speed than any R. R. Lens. Thus in getting this camera, the amateur assures himself not only of the microscopic definition of the finest anastigmat, but also of a greater speed than is possible with the ordinarily equipped camera. When it is considered that a perfectly reliable $2\frac{1}{2} \times 4\frac{1}{4}$ or $3\frac{1}{4} \times 4\frac{1}{4}$ camera, possessing these advantages, can be purchased for \$18.50 and a $3\frac{1}{4} \times 5\frac{1}{2}$ (post card) camera for \$22.00, the desirability of this model for amateur photography is apparent.

Carefully made in every particular, the Premoette Senior is offered at as low a price as is consistent with quality and reliability.



Premoette Senior

All adjustments and special features which are not essential in making excellent pictures under average conditions of amateur photography, have been avoided in its construction, and the camera will give the best of satisfaction to those who wish to make clear, sharp, everyday pictures of the persons, things and events in which they are interested.

The Premoette Senior can be loaded very quickly in any light, just open the back of the camera, drop in the Premo Film Pack, close the back, draw the safety cover, and the first film is in position for exposure. The exposed film is changed by drawing the successively numbered tabs.

The lens support, or standard, is exceptionally rigid, and is operated along the runways by means of an automatic clamp, making it an easy matter to draw the lens out to the focusing scale, where an automatic focusing lock provides for the instant focusing of objects at any distance.

The shutter is the Kodak Ball Bearing with time and bulb actions and retarded speed of 1/25, 1/50 and 1/100 seconds. It works with either cable or finger release and is unusually accurate and reliable.

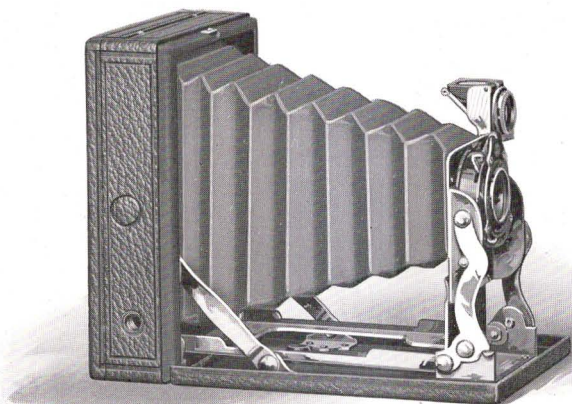
Premoette Srs. are covered with genuine leather of selected grain, metal parts are finished in nickel and black lacquer, and they are cameras which the merest beginner can successfully use. When fitted with Kodak Portrait Attachment the pleasing proportions of the pictures make these cameras excellent for home portraiture.

Specifications: Capacity: 12 exposures. Box: seasoned wood. Bed and Back: aluminum. Dimensions: $2\frac{1}{2} \times 4\frac{1}{4}$, $1\frac{7}{8} \times 3\frac{5}{8} \times 5\frac{5}{8}$ in.; $3\frac{1}{4} \times 4\frac{1}{4}$, $1\frac{1}{8} \times 4\frac{1}{8} \times 5\frac{5}{8}$ in.; 3A, $3\frac{1}{4} \times 5\frac{1}{2}$, $2\frac{1}{4} \times 4\frac{1}{2} \times 7\frac{1}{8}$ in. Weight: $2\frac{1}{2} \times 4\frac{1}{4}$, 21 ozs.; $3\frac{1}{4} \times 4\frac{1}{4}$, 22 ozs.; 3A, $3\frac{1}{4} \times 5\frac{1}{2}$, 35 ozs. Lens: Rapid Rectilinear. Shutter, Kodak Ball Bearing, with cable release (see page 24). Tripod sockets: two. Finder: reversible, brilliant, collapsible. Automatic standard clamp. Automatic focusing lock.

PRICES

	$2\frac{1}{2} \times 4\frac{1}{4}$	$3\frac{1}{4} \times 4\frac{1}{4}$	3A $3\frac{1}{4} \times 5\frac{1}{2}$
Premoette Sr. with R. R. Lens and Kodak Ball Bearing Shutter	\$12.50	\$12.50	\$16.00
Ditto, with Kodak Anastigmat Lens, <i>f</i> .7.7	18.50	18.50	22.00
Sole Leather Carrying Case	2.75	2.75	3.50
Premo Film Pack (12 exposures)50	.70	.80
Kodak Portrait Attachment (See page 41)50	.50	.50

Pocket Premo



THIS attractive little camera is entirely new in construction and embodies extreme compactness and simplicity of loading and operating.

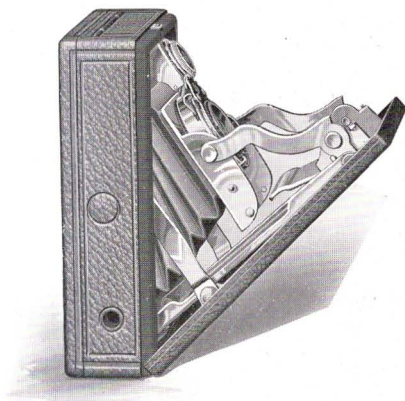
No focusing or estimating of distances is required. The front standard, bearing the lens and shutter, automatically unfolds and is extended and locked rigidly in focusing position when the bed of the camera is drawn down.

The Pocket Premo may be brought into action very quickly, and for that reason unusual and interesting pictures may be secured that would be lost if adjustment of focus were necessary. The camera is closed by pressing the two side arms and raising the bed, which causes the bellows and entire front to compactly refold within the camera body.

This little camera makes $2\frac{1}{4} \times 3\frac{1}{4}$ pictures upon Premo Film Packs, and when closed, it has about the same dimensions as two $2\frac{1}{4} \times 3\frac{1}{4}$ Film Packs.

Maximum compactness in the construction of this model is obtained by means of the Collapsible Back, which may be quickly extended to receive the Premo Film Pack, containing 12 exposures. After the Pack has been placed in position in the camera, the safety cover protecting the first exposure, is drawn.

Pocket Premo



The Meniscus Achromatic Lens fitted to the camera, is carefully tested and adjusted, and will produce negatives of excellent quality, from which enlargements many times the size of the contact print may easily be made.

The smooth working Kodak Ball Bearing Shutter, supplied, provides for speeds of $1/25$ and $1/50$ of a second, as well as time and bulb exposures.

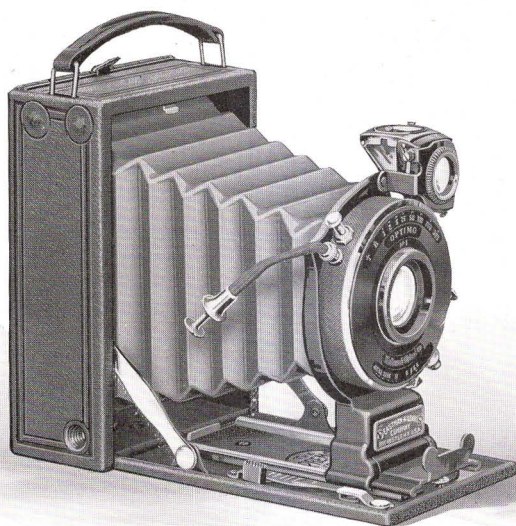
The Pocket Premo is covered with a fine quality of grain leather, and all metal parts are finished in nickel.

Specifications: Capacity: 12 exposures without reloading. Size of picture: $2\frac{1}{4} \times 3\frac{1}{4}$. Dimensions: $1\frac{1}{4} \times 3\frac{1}{4} \times 4\frac{1}{8}$. Weight: 18 ozs. Shutter: Kodak Ball Bearing. Lens: Meniscus Achromatic. Finder: Collapsible. Tripod Sockets: two.

PRICES

	$2\frac{1}{4} \times 3\frac{1}{4}$
Pocket Premo with Meniscus Achromatic Lens and Kodak Ball Bearing Shutter	\$8.50
Carrying Case to hold camera and Premo Film Pack	1.20
Premo Film Pack (12 exposures)	.40
Kodak Portrait Attachment (See page 41)	.50

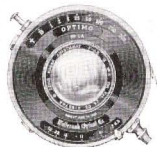
Premo No. 12



THE special feature of the Premo No. 12 is the provision for accurate focusing and arrangement of the composition of every picture made. The $2\frac{1}{4} \times 3\frac{3}{4}$ pictures, shown full size on the focusing screen, may be made upon film, or the brand of plates best suited to the subject. This construction is decidedly helpful in attaining the required pictorial effect. If direct focusing and composition of the full size picture is not essential, the lens is set on the Focusing Scale at a point indicating the estimated distance of the subject.

With the high speed Anastigmat Lens and Optimo Shutter equipment, permitting variation in exposures ranging from "time" to $1/300$ of a second, it is easily possible to obtain successful pictures of unusual and interesting subjects, difficult to procure with other types of cameras.

The Premo No. 12 is regularly fitted with the B. & L. Kodak Anastigmat $f.6.3$ Lens and Optimo Shutter. It is also supplied



Premo No. 12

with other types of *f*.6.3 lenses, as listed, and where a lens of extreme rapidity is required, the B. & L. Tessar, Series Ic, *f*.4.5 Lens, will be found most effective.

With such an anastigmat equipment and shutter efficiency, an almost unlimited variety of photographic work is possible—from interesting pictures of rapidly moving objects, to successful pictures made under adverse conditions of lighting, which would be difficult to procure with the average camera.

For those who do not require the high speed equipments, we offer the camera equipped with Ball Bearing Shutter and Kodak Anastigmat, *f*.7.7, or Rapid Rectilinear Lens.

The greatest facility for loading and unloading the camera in daylight, and changing the exposed film, is provided in the Premo Film Pack.

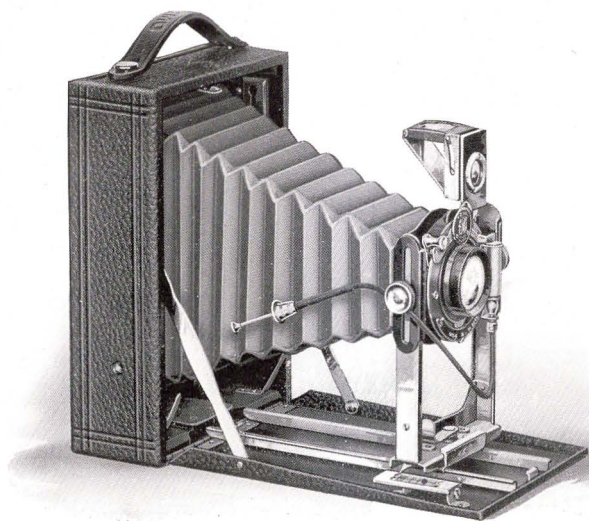
The Premo No. 12 is so small and compact, that it may be conveniently carried in the pocket. It is covered with the finest quality of grain leather, handsomely embossed, and all metal parts are finished in nickel and black enamel.

Specifications: Size of picture: $2\frac{1}{4} \times 3\frac{1}{4}$. Capacity: 12 film or one plate exposure. Box: aluminum. Bed: aluminum, with special lever focusing device. Finder: reversible, with revolving mask. Tripod sockets: two. Lens: Bausch & Lomb Kodak Anastigmat, *f*.6.3, or other lenses as per price list. Shutter: Optimo or Kodak Ball Bearing as per price list. Dimensions: $1\frac{5}{8} \times 3\frac{1}{4} \times 4\frac{5}{8}$ in. Weight: 24 ozs.

PRICES

	$2\frac{1}{4} \times 3\frac{1}{4}$
Premo No. 12 with Optimo Shutter and Bausch & Lomb Kodak Anastigmat Lens, <i>f</i> .6.3, $4\frac{3}{8}$ -inch focus, including Film Pack Adapter and one Plate Holder . . .	\$51.50
Ditto, with Kodak Anastigmat Lens, <i>f</i> .6.3, $4\frac{3}{8}$ -inch focus . . .	43.00
Ditto, with B. & L. Special Anastigmat Lens, <i>f</i> .6.3, $4\frac{1}{8}$ -inch focus . . .	41.00
Ditto, with B. & L. Tessar, Ser. IIb Lens, <i>f</i> .6.3, $4\frac{5}{8}$ -inch focus . . .	62.00
Ditto, with B. & L. Tessar, Ser. Ic Lens, <i>f</i> .4.5, $3\frac{1}{2}$ -inch focus . . .	64.00
Ditto, with B. & L. Tessar, Ser. IIb Lens, <i>f</i> .6.3, $3\frac{3}{8}$ -inch focus, and Compound Shutter . . .	41.50
Ditto, with Kodak Ball Bearing Shutter and R. R. Lens . . .	18.50
Ditto, with Kodak Anastigmat Lens, <i>f</i> .7.7 . . .	24.50
Carrying Case, grain leather, velvet lined . . .	3.25
Single Plate Holder, each50
Premo Film Pack, 12 exposures40
Graflex Roll Holder, interchangeable with Plate Holder . . .	8.00

Premo No. 8



HERE is a camera for the amateur who wishes to undertake more serious photographic work. Every picture made may be accurately focused and composed upon the focusing screen. The rising and falling front permits correct centering of the composition. While direct focusing is desirable, it is not always convenient or possible, and the lens in such cases may be focused with the graduated scale, the picture being centered with the view finder, which is of the collapsible type.

Plates or film, whichever is most convenient or best suited to the character of the subject, can be used interchangeably. Plates are loaded into a regular Plate Holder, and by means of the Premo Adapter and Premo Film Packs, the camera is converted into a daylight loading instrument with all the advantages of film convenience.

The Premo No. 8 is regularly supplied with the Standard Planatograph R. R. Lens. At a slight additional charge, the



Premo No. 8

$3\frac{1}{4} \times 5\frac{1}{2}$ (post card) size camera is furnished with the Kodak Anastigmat Lens *f*.7.7, providing greater speed and excellent definition.

The shutter furnished with all models of the Premo No. 8, is a modified form of the Kodak Ball Bearing, having all the precision and smooth action of that shutter. It is graduated for speeds of 1/25, 1/50 and 1/100 seconds, as well as for bulb and time exposures.

The body of the camera is made of seasoned wood, with front bed of aluminum and metal runways. The bed and body are covered with black grain leather; the bellows is black and the metal parts are finished in nickel, giving the camera a neat, attractive appearance.

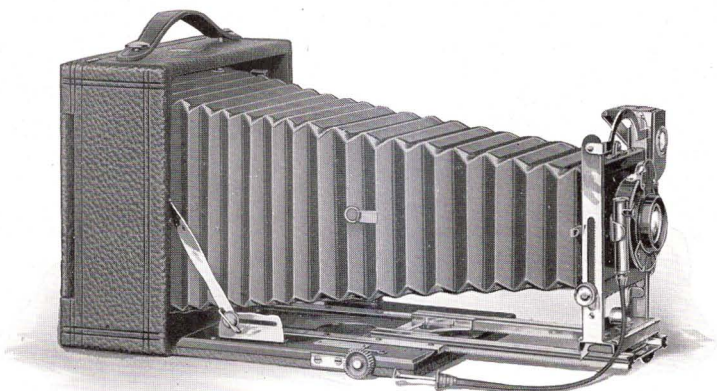
The Premo No. 8 is made for the three larger popular sizes of pictures—the $3\frac{1}{4} \times 5\frac{1}{2}$, the 4×5 and the 5×7 . Contact prints of these sizes are as large pictures as the amateur ordinarily desires, but enlargements of practically any size may be made from the negatives. The proportions of these sizes are exceptionally well suited for figure work. When the camera is fitted with the Kodak Portrait Attachment, and the composition is focused and adjusted upon the ground glass for focusing, the Premo No. 8 is unusually effective for home portraiture.

Specifications: Capacity: 12 film or 2 plate exposures. Box: kiln-dried wood, covered with leather. Standard: made of metal, with rising and falling front. Carrying Case: imitation leather, with compartments for holders. Finder: reversible, brilliant, collapsible. Tripod Sockets: two. Lens: Planatograph. Shutter: Kodak Ball Bearing with cable release (See page 24). Dimensions: $3\frac{1}{4} \times 5\frac{1}{2}$, $2 \times 5 \times 7\frac{1}{4}$ in.; 4×5 , $2 \times 5\frac{1}{4} \times 6\frac{1}{2}$ in.; 5×7 , $2\frac{1}{4} \times 6\frac{1}{2} \times 8\frac{1}{2}$ in. Weight: $3\frac{1}{4} \times 5\frac{1}{2}$, 34 ozs.; 4×5 , 30 ozs.; 5×7 , 42 ozs.

PRICES

	4x5	3A $3\frac{1}{4} \times 5\frac{1}{2}$	5x7
Premo No. 8, with Planatograph Lens, Kodak Ball Bearing Shutter, Carry- ing Case and Plate Holder	\$18.50	\$19.50	\$26.00
Ditto, with Kodak Anastigmat Lens, <i>f</i> .7.7		25.50	
Premo Film Pack Adapter	1.50	1.50	2.50
Premo Film Pack (12 exposures)90	.80	1.60
Kodak Portrait Attachment (See page 41)50	.50	.50

Premo No. 9



THIS camera is provided with the mechanical adjustments and bellows capacity essential to a wider application of photography than is possible with any of the preceding models of Premo Cameras.

The swing bed permits the operator to make pictures of tall buildings, and the like, without tilting the camera, thereby permitting true alignment of the subject.

A further aid to correct photographic reproductions of architectural subjects or general views, is provided with the rising and falling front, whereby the picture is properly centered upon the focusing screen.

Vertical or horizontal pictures, whichever is most suitable to the composition, may be made by means of the Premo reversible back, which accepts Plate Holders or the Premo Film Pack Adapter.

The bellows is of black leather, and has sufficient draw to permit the use of the whole lens for making very nearly full size copies, and accommodates as well, the long focus single combination, when a larger picture of distant objects is required. A rack and pinion actuates the bed plate, which is locked in any position by a simple device.

The front standard of the Premo No. 9 is constructed of metal and is very rigid. The lens board is removable

Premo No. 9

The instrument is of the most substantial construction, all working parts operate with mechanical precision and it is finished in the most careful manner. The covering is of specially selected black leather of grain, the bed is finished in black and the metal parts are heavily nicked. The new Premo collapsible, brilliant finder is fitted to all models.

The regular lens and shutter equipment comprises the Kodak Ball Bearing shutter and the Planatograph lens—a perfectly satisfactory equipment for every-day amateur photography.

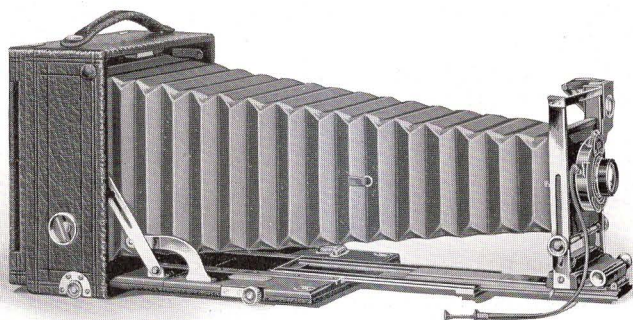
In the 3A and 4 x 5 sizes the camera is offered at a slight increase in price, fitted with the new Kodak Anastigmat lens, *f.7.7*. For those who wish an anastigmat of even greater speed, it is supplied with the new Kodak Anastigmat lens working at *f.6.3* and the Optimo shutter with cable release. There is also a choice of several other high speed anastigmat fittings.

Specifications: Capacity: 12 film or 2 plate exposures. Box: kiln-dried wood, covered with fine grain leather. Bed: hand polished wood, finished in black, and supplied with rack and pinion for fine focusing, and swing arrangement. Back: spring catch, reversible. Standard: made of metal, with rising and falling front. Finder: brilliant, reversible, collapsible. Tripod Socket: one. Lens: Planatograph. Shutter: Kodak Ball Bearing (See page 24). Bellows: black leather; draw, $3\frac{1}{4} \times 5\frac{1}{2}$, 13 in.; 4 x 5, 13 in.; 5 x 7, $15\frac{1}{4}$ in. Dimensions: $3\frac{1}{4} \times 5\frac{1}{2}$, $3 \times 7 \times 7$ in.; 4 x 5, $3 \times 7 \times 7$ in.; 5 x 7, $2\frac{7}{8} \times 8\frac{1}{4} \times 8\frac{1}{4}$ in. Weight: $3\frac{1}{4} \times 5\frac{1}{2}$, 63 ozs.; 4 x 5, 63 ozs.; 5 x 7, 76 ozs.

PRICES

	4x5	3A $3\frac{1}{4} \times 5\frac{1}{2}$	5x7
Premo No. 9, with Planatograph Lens, Kodak Ball Bearing Shutter, Case and Holder	\$36.00	\$36.00	\$43.50
Ditto, with Kodak Anastigmat Lens, <i>f.7.7</i>	42.00	42.00	
Ditto, with Kodak Anastigmat Lens, <i>f.6.3</i> and Optimo Shutter	63.00	63.00	
Ditto, with Bausch & Lomb Kodak Anastigmat Lens, <i>f.6.3</i> , and Optimo Shutter,	70.75	73.25	95.50
Premo Film Pack Adapter	1.50	1.50	2.50
Premo Film Pack (12 exposures)	.90	.80	1.60
Kodak Portrait Attachment (See page 41)	.50	.50	.50

Premo No. 10



DESIGNED to meet the requirements of technical photographic work, the Premo No. 10 is equipped with every mechanical adjustment required in a camera for making pictures under all conditions.

The long bellows draw will accommodate the single combinations of any lens system. Wide angle lenses may be used by dropping the bed and substituting the short supplementary bed furnished with the camera. The swing back and rising and falling front permit the correct composition of architectural subjects.

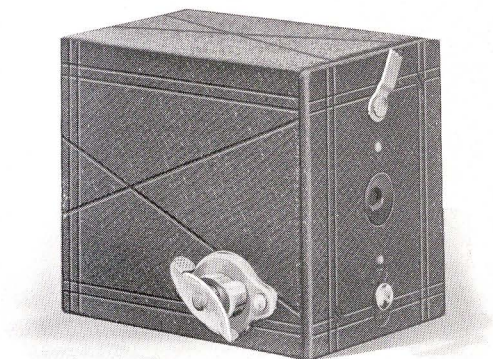
The camera takes films or plates with equal facility.

Specifications: Capacity: 12 film or 2 plate exposures. Box: mahogany, leather covered. Bed: mahogany, with highly polished black finish. Back: spring catch, reversible. Swing: vertical; rack and pinion actuated, with locking device. Front: rising and falling rack and pinion actuated with locking device. Lens Board: removable, size $3\frac{1}{2} \times 3\frac{1}{2}$ in. Finder: Brilliant, reversible. Tripod Sockets: two. Carrying Case: sole leather, plush lined, with compartments for holders. Bellows: black leather; draw, 19 in. Dimensions: $4 \times 8\frac{1}{2} \times 8\frac{1}{2}$. Weight: $5\frac{1}{2}$ lbs.

PRICES

	5x7
Premo No. 10, with Planatograph Lens and Ball Bearing Shutter, Carrying Case and Plate Holder	\$ 78.50
Ditto, with Bausch & Lomb Kodak Anastigmat Lens, f.6.3 and Optimo Shutter	131.00
Ditto, with B. & L. Protar VIIa Lens, f.7, and Optimo Shutter	167.50
Premo Film Pack Adapter	2.50
Premo Film Pack	1.60

Cartridge Premo No. 00



THIS little camera was made especially for the youngsters, and has proven a source of pleasure for many thousands of boys and girls throughout the country. Photography is interesting and instructive. There is not only the fun every boy and girl will find in making pictures of their companions, games, and the like, but it is helpful in developing the observation and appreciation of pictorial art.

The camera is covered with a lasting quality of imitation leather, and is fitted with an Automatic Shutter and first quality Meniscus Lens, carefully tested. It loads with a special 6 exposure cartridge, and while this is not N. C. Film, it is of the standard Eastman quality. Pictures made with these inexpensive instruments compare favorably with those produced by much larger and higher priced cameras.

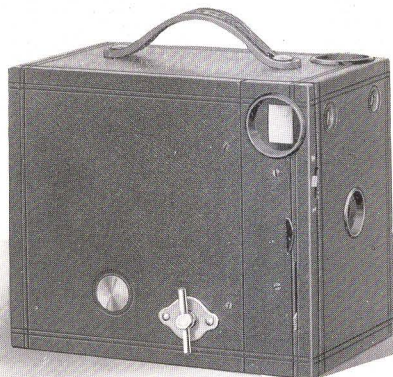
Specifications: For rectangular pictures $1\frac{1}{4} \times 1\frac{3}{4}$ inches. Capacity: 6 exposures without reloading. Size of camera: $2 \times 2\frac{5}{8} \times 3\frac{1}{8}$ in. Lens: Meniscus, $2\frac{1}{4}$ -inch focus. Shutter: Automatic for time and snap shot exposures.

PRICES

Cartridge Premo No. 00, Meniscus Lens and Automatic Shutter	\$1.00
Eastman Film Cartridge, 6 exposures, No. 35	.10

Cartridge Premos

Nos. 2 and 2A



THESE cameras require no focusing or estimating of distances. They take regular Eastman N. C. film cartridges, which may be loaded, unloaded and developed in full daylight, and will appeal especially to those who wish to make pictures on roll film in the easiest way and at the minimum of expense.

The cameras are equipped with automatic shutters, working for time or "snap shot" exposures, and will make negatives of a quality that yield good enlargements up to any reasonable size.

Specifications: For rectangular pictures, No. 2, $2\frac{1}{4} \times 3\frac{1}{4}$ in.; No. 2A, $2\frac{1}{2} \times 4\frac{1}{4}$ in. Capacity: No. 2, 6 exposures without reloading; No. 2A, 12 exposures without reloading. Size of camera: No. 2, $5\frac{5}{8} \times 4 \times 3\frac{1}{4}$ in.; No. 2A, $3\frac{7}{8} \times 5\frac{1}{8} \times 6\frac{1}{8}$ in. Weight: No. 2, 13 ozs.; No. 2A, 21 ozs. Lens: No. 2, Meniscus; No. 2A, Meniscus Achromatic. Shutter: Eastman Rotary, with three stops. Two finders.

PRICES

	No. 2	No. 2A
Cartridge Premo, as per specifications	\$ 2.75	\$ 3.50
Carrying Case, with shoulder strap	1.10	1.10
N. C. Film Cartridge, 12 exposures (No. 116)50
Ditto, 6 ex. (No. 120 for No. 2; No. 116 for No. 2A)20	.25
Kodak Portrait Attachment (See page 41)50	.50

No. 2C Cartridge Premo



THE $2\frac{7}{8} \times 4\frac{7}{8}$ size is a new proportion for amateur pictures which was recently introduced. Its shape is so pleasing, and it lends itself to such artistic composition, that we have added to the simple, inexpensive Cartridge Premos, a camera for this desirable size.

In design it follows closely that of the 2 and 2A models, and loads with Eastman N. C. Film offering all the advantages of day-light-all-the-way photography.

The 2C is a reliable camera, one with which it is really difficult to go wrong, as it requires no focusing or estimating of distances. It is always ready for action, is supplied with automatic shutter for time and snap shot exposures, tested meniscus achromatic lens, two finders and two tripod sockets

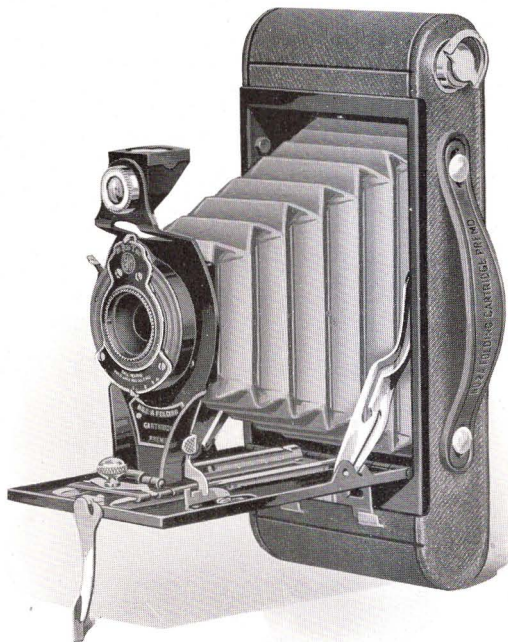
Specifications: For rectangular pictures $2\frac{7}{8} \times 4\frac{7}{8}$ in. Capacity: 10 exposures without reloading. Size of camera: $3\frac{7}{8} \times 6 \times 7\frac{1}{4}$ in. Weight: 25 ozs. Lens: Meniscus Achromatic. $5\frac{1}{2}$ -inch focus. Shutter: Eastman Rotary, with three stops. Two finders Two tripod sockets.

PRICES

No. 2C Cartridge Premo, Meniscus Achromatic Lens, Eastman Rotary Shutter	\$4.50
Carrying Case with shoulder strap	1.35
N. C. Film Cartridge, 10 exposures (No. 130)	.60
Ditto, 6 exposures	.35
Kodak Portrait Attachment (See page 41)	.50

Folding Cartridge Premos

Nos. 2 and 2A



THE practical simplicity of operation, compactness and attractive appearance of the Folding Cartridge Premo, will appeal to those desiring a properly equipped, inexpensive camera that meets the requirements of amateur picture making.

These Premos are constructed on a very simple principle for loading and unloading in daylight, with the Eastman N. C. Film Cartridge.

The excellent quality of the pictures produced by the Folding Cartridge Premos, combined with the



Folding Cartridge Premos

Nos. 2 and 2A

ease of operation, have resulted in its being established as a most popular model.

Alike in general appearance and operation, the 2 and 2A models differ in the size of the pictures they make and slightly in lens and shutter equipment. The No. 2 is regularly fitted with a meniscus lens and the No. 0 Kodak Ball Bearing shutter. This shutter has time and bulb exposure actions and instantaneous speeds of 1/25 and 1/50 second. The No. 2A is regularly fitted with a meniscus achromatic lens and the No. 1 Kodak Ball Bearing shutter without cable release. This shutter has the same actions and speeds of the No. 0 and in addition, the faster speed of 1/100 second. Both cameras are offered also with R. R. lens.

The Eastman N. C. Film Cartridge film may be developed in the Kodak Film Tank, no dark room is necessary for any step. The cameras are neatly finished and covered with a serviceable, attractive grade of imitation leather. Either size will slip easily into an ordinary pocket.

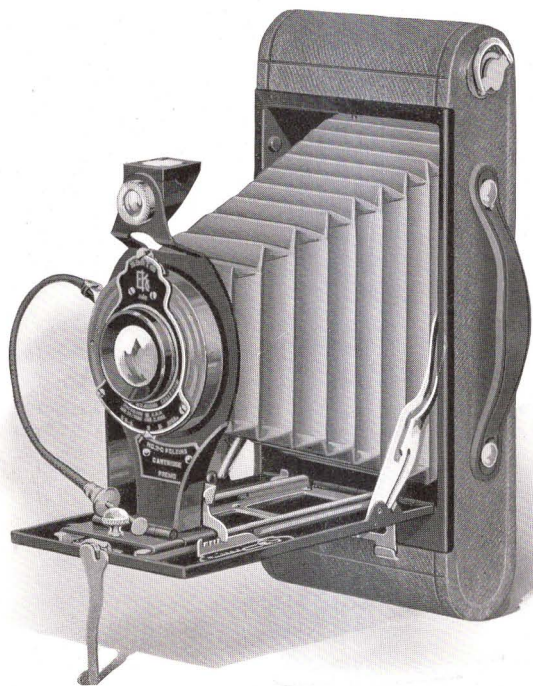
Specifications: No. 2: For rectangular pictures, $2\frac{1}{4} \times 3\frac{3}{4}$ in. Capacity: 6 exposures without reloading. Size of camera: $1\frac{1}{4} \times 3\frac{1}{8} \times 6\frac{1}{2}$ in. Weight: 19 ozs. Lens: Meniscus Achromatic, $3\frac{1}{2}$ -inch focus. Also supplied with Rapid Rectilinear Lens, if desired. Shutter: Kodak Ball Bearing. Reversible finder, two tripod sockets, automatic focusing lock, black leather bellows.

No. 2A: For rectangular pictures $2\frac{1}{2} \times 4\frac{1}{4}$ in. Capacity: 12 exposures without reloading. Size of camera: $1\frac{7}{8} \times 3\frac{3}{8} \times 7\frac{7}{8}$ in. Weight: 25 ozs. Lens: Meniscus Achromatic, $4\frac{1}{4}$ -inch focus. Also supplied with Rapid Rectilinear Lens, if desired. Shutter: Kodak Ball Bearing (See page 24). Reversible finder, two tripod sockets, automatic focusing lock, black leather bellows.

PRICES

	No. 2	No. 2A
Folding Cartridge Premo with single lens and Kodak Ball Bearing Shutter	\$ 7.00	\$ 8.00
Diitto, with R. R. Lens	8.50	10.00
Cartridge Premo Carrying Case	1.20	1.35
N. C. Film Cartridge, 12 exposures (No. 116)50
Diitto, 6 exposures (No. 120 for No. 2, No. 116 for No. 2A)20	.25
Kodak Portrait Attachment (See page 41)50	.50

Folding Cartridge Premos *Nos. 2C and 3A*



THE success of the 2 and 2A Folding Cartridge Premos led to the introduction of two other larger models, of the same type. The No. 2C illustrated on this page, makes $2\frac{7}{8} \times 4\frac{7}{8}$ pictures. The No. 3A, similar to the 2C in every respect, excepting size, is for the popular $3\frac{1}{4} \times 5\frac{1}{2}$ (post card) pictures.

Made of first quality material, by high class workmen, these cameras receive the same rigid tests for reliability as are applied to all Eastman products. It is only through a long perfected factory organization and production in large quan-



Folding Cartridge Premos

Nos. 2C and 3A

tities, that cameras of such exceptional quality may be offered at such moderate prices.

The box is made of aluminum, which means strength and light weight, the standard is so formed as to be unusually rigid and metal parts are finished in nickel and black enamel. The covering is of a substantial grade of imitation leather, the finder is reversible, two tripod sockets are provided and an automatic focusing lock so that the lens can be set positively for any distance in an instant.

The cameras load with standard Eastman N. C. film. This is not only an assurance of the quality of the results to be obtained, but means that every process—loading, unloading, developing—can be performed in daylight, eliminating the dark-room entirely.

The shape of the negatives made by these cameras is very appropriate for portraiture. The Kodak Portrait Attachment adapts either of these cameras to home portraiture.

Specifications: No. 2C: For rectangular pictures, $2\frac{7}{8} \times 4\frac{7}{8}$ in. Capacity: 10 exposures without reloading. Size of camera: $1\frac{3}{4} \times 3\frac{1}{8} \times 8\frac{5}{8}$ in. Weight: 28 ozs. Lens: Meniscus Achromatic, 5-inch focus. Also supplied with Rapid Rectilinear Lens, if desired. Shutter: Kodak Ball Bearing (See page 24). Reversible finder, two tripod sockets, automatic focusing lock, black leather bellows.

No. 3A: For rectangular pictures, $3\frac{1}{4} \times 5\frac{1}{2}$ in. Capacity: 10 exposures without reloading. Size of camera $1\frac{3}{4} \times 4\frac{1}{8} \times 9\frac{1}{8}$ in. Weight: 28 ozs. Lens: Meniscus Achromatic, $5\frac{3}{8}$ -inch focus. Also supplied with Rapid Rectilinear Lens, if desired. Shutter: Kodak Ball Bearing (See page 24). Reversible finder, two tripod sockets, automatic focusing lock, black leather bellows.

PRICES

	No. 2C	No. 3A
Folding Cartridge Premo with single lens and Kodak		
Ball Bearing Shutter	\$10.50	\$11.50
Ditto, with R. R. Lens	12.50	14.00
Cartridge Premo Carrying Case	1.35	1.35
N. C. Film Cartridge, 10 exposures (No. 130 for No.		
2C, No. 122 for 3A)60	.70
Ditto, 6 exposures35	.40
Kodak Portrait Attachment (See page 41)50	.50

Kodak Ball Bearing Shutter

THIS shutter is automatic in its action, and does not require setting. Its leaves work on ball bearings, giving it smooth and reliable action, and as they open and close in a star shaped aperture, the maximum of light is admitted. It is operated by cable release or finger release, and has Iris Diaphragm. The illustration shows the shutter as fitted to cameras equipped with Kodak Anastigmat lens, $f.7.7$, but all models work upon the same general system. The model regularly fitted to Premoette Jr. No. 1 and Folding Cartridge Premo No. 2 has time and bulb actions and indicated speeds of $1/25$ and $1/50$ second. It has no cable release.

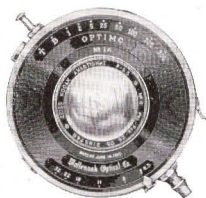


The models supplied with Folding Cartridge Premos Nos. 2A, 2C, 3A, Premoette Jr. No. 1A, Premoette Senior, Premo Nos. 8, 9 and 10 have the same speeds as the No. 0 and in addition the higher speed of $1/100$ second. These are supplied with cable releases in all cases excepting as fitted to 2A Folding Cartridge Premo, where it has finger release only. An illustration of the particular model supplied will be found on the page with each camera.

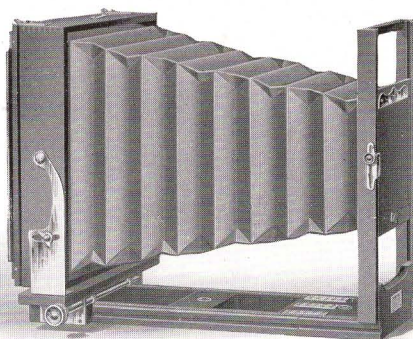
Optimo Shutter

This shutter is recommended only where anastigmat lenses are to be used as it is constructed to attain the highest possible speed for a between-the-lens hand camera shutter. It is a shutter of the setting type, leaves opening in star shape and besides time and bulb exposure actions, has variable indicated speeds of 1 , $1/2$, $1/5$, $1/25$, $1/50$, $1/100$, $1/200$, and $1/300$ seconds. It is very accurate on all speeds, and is handsomely finished and works with cable or finger release.

This shutter is regularly supplied on the Premo No. 12 and as a special equipment with the Premos Nos. 9 and 10.



The R. O. C. View



AN inexpensive, reliable view camera for those who do not require extra long bellows capacity. It is especially adapted for interior work as it focuses from the rear only, and the back may be moved as close to the front as desired so that extreme wide angle lenses may be used.

The front board is so wide that stereoscopic lenses may be used, and the standard is strong and rigid, affording a safe support for the heaviest lenses. Vertical and horizontal swings, rising and falling front and reversible back are provided. The camera is strongly built for service and will last indefinitely.

The price includes case and either plate holder or film holder for Eastman Portrait films. The plate holder will be supplied unless otherwise specified.

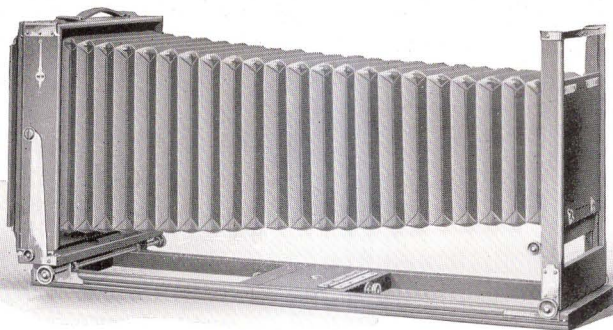
Specifications: Bellows: draw, 5 x 7, 14 in.; 6½ x 8½, 15½ in.; 8 x 10, 17 in. Weight: 5 x 7, 4¾ lbs.; 6½ x 8½, 6 lbs.; 8 x 10, 6¾ lbs. Size of Lens Board: 5 x 7, 3¾ x 6¾ in.; 6½ x 8½, 4½ x 6½ in.; 8 x 10, 5 x 6 in. Carrying Case: square style canvas.

PRICES

	5x7	6½x8½	8x10
R. O. C. View with Case and Holder . . .	\$20.00	\$22.50	\$25.00
R. O. C. View Complete Outfit* . . .	43.00	56.00	68.00
Extra Carrying Case, Regular . . .	2.50	2.75	3.00
R. O. C. Plate Holders . . .	1.25	1.35	1.50
Eastman Portrait Film Holders . . .	1.25	1.35	1.50

*R. O. C. Complete Outfit includes: R. O. C. View Camera, Symmetrical Lens and Automatic Shutter, six Plate Holders, Combination Tripod, Focusing Cloth, and Carrying Case holding complete outfit.

Eastman View No. 1



BUILT for practical service, the Eastman View Camera No. 1 will meet the requirements of anyone desiring a substantial, reliable View Camera at small cost.

The camera is made of the best quality cherry with mahogany finish. Metal parts are of polished brass, and corners are dove-tailed and reinforced by metal angle pieces.

It has double extensions, and both front and back are actuated by rack and pinion, so that the camera may be focused from either end, and the back can be racked up as close to the front as desired. This provides for the use of lenses of the widest angle. The camera has rising and falling front, actuated by rack and pinion, and this can be locked solidly at any point by merely pushing in the pinion. The front board is removable and is large enough to accommodate any lens.

Both horizontal and vertical swings are provided, and the back is reversible and furnished with a vertical cut-off board, so that two negatives may be made on one plate, if desired.

A strap handle and plumb level are supplied and an automatic bellows support which prevents sagging of the bellows at all times.

The price includes one double plate holder and canvas carrying case. This case is of the combination style, with three compartments in the bottom; one for the camera, one for plate

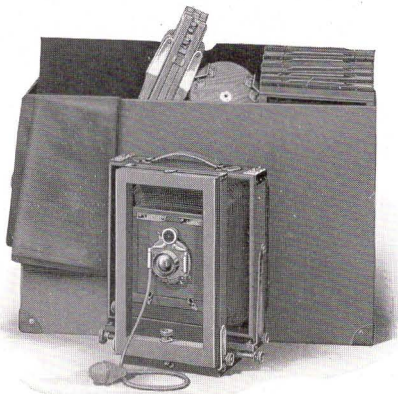
Eastman View No. 1

holders and the other for focusing cloth, lenses and other accessories. On top of these is an extra compartment for carrying the tripod.

The case is strongly made, with corners reinforced, and full length straps of the best leather.

The price includes case and one holder, either film or plate. Unless specified we will furnish plate holder.

For those who want larger size view cameras we will furnish the regular Empire State model in the 11 x 14 size.



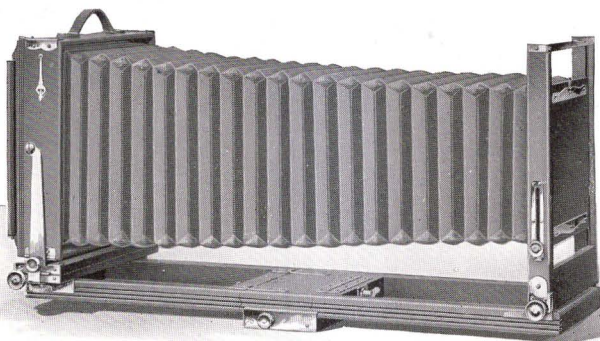
Specifications: Bellows: draw, 5 x 7, 22½ in.; 6½ x 8½, 26 in.; 8 x 10, 29 in. Weight: 5 x 7, 6 lbs.; 6½ x 8½, 8 lbs.; 8 x 10, 9½ lbs. Size of Lens Board: 5 x 7, 4¼ x 4¼ in.; 6½ x 8½, 4¾ x 4¾ in.; 8 x 10, 4¾ x 4¾ in. Carrying Case: long style canvas, combination style, with compartment for camera, holders and tripod.

PRICES

	5x7	6½x8½	8x10
Eastman View No. 1 with Case and Holder	\$30.00	\$32.00	\$35.00
Eastman View No. 1 Complete Outfit*	52.00	62.00	73.00
Complete Outfit as above, with Rapid Rectigraphic instead of Symmetrical Lens	62.00	74.00	87.00
Extra Carrying Case	4.50	4.75	5.00
Extra Lens Board30	.40	.50
Eastman View Plate Holder	1.50	1.60	1.75
Eastman Portrait Film Holders	1.25	1.35	1.50
Empire State Camera, furnished only in the 11 x 14 size			60.00

*Eastman View No. 1 Complete Outfit includes: Eastman View No. 1 Camera, Symmetrical Lens, Automatic Shutter, six Plate Holders, Combination Tripod, Focusing Cloth and Case to hold complete outfit.

Eastman View No. 2



ALL our experience in view camera making, all the information that we have been able to collect of the needs of the view camera worker, have been put into the proposition of providing in this model a view camera as near to perfection as human ingenuity can devise.

It is constructed with the idea of providing the greatest possible solidity and strength throughout. The extensions are extra thick, the standard is very large and will furnish an absolutely rigid support for the heaviest lenses. Corners are dovetailed and reinforced by brass angle pieces, and the metal parts are all made of the best quality of brass, fully lacquered.

The front board is removable and very large. The rising and falling front is actuated by rack and pinion. The camera has both vertical and horizontal swing and can be focused from either front or rear by rack and pinion, so that the back can be racked up as close to the front as desired. Thus lenses of the widest angle can be used. A sliding tripod block is provided so that the camera can always be supported directly above the tripod or the weight distributed, as the operator may wish.

The back is reversible, a plumb level and strap handle are supplied and both horizontal and vertical cut-off boards are furnished so that four different negatives can be made on one plate if desired. The bellows of this camera is made of genuine leather and a spring arrangement working automatically prevents it from sagging at any time.

Eastman View No. 2

The method of locking extensions is very convenient, not by means of the old-fashioned, long threaded screw, but by a specially constructed device which locks firmly by merely being pushed in and given a quarter turn. The back extension, which is detachable, in addition to this device is further strengthened by two clamp catches which hold it absolutely rigid.

Especial attention is called to the 7 x 11 size—a proportion which will prove very attractive to many workers. This camera has an especially wide front board with sliding arrangement which permits the centering of the lens on either half of the 7 x 11 plate when it is desired to make two exposures on one plate. The swing of this model is of unusual latitude to obtain its fullest value, for architectural work.

Anticipating that most photographers will prefer to use Eastman Portrait Film with this size camera, we will supply the Eastman Portrait Film Holder with it unless otherwise specified.

The camera is made of mahogany and hand polished, with the exception of the extensions, which are of cherry on account of its greater strength.

Specifications: Bellows: draw, 5 x 7, 23 in.; 6½ x 8½, 26½ in.; 8 x 10, 29½ in.; 7 x 11, 31 in. Weight: 5 x 7, 7 lbs.; 6½ x 8½, 10½ lbs.; 8 x 10, 11¼ lbs.; 7 x 11, 15½ lbs. Size of Lens Board: 5 x 7, 4¼ x 4½ in.; 6½ x 8½, 6 x 6 in.; 8 x 10, 6 x 6 in.; 7 x 11, 6⅞ x 3⅞ in. Carrying Case, canvas, combination style, with compartments for camera, holders and tripod. All operating nuts on the right side, binding nuts on the left hand side.

PRICES

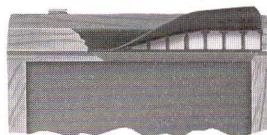
	5x7	6½x8½	8x10	7x11
Eastman View No. 2 with Case and Holder	\$40.00	\$43.00	\$45.00	\$50.00
Eastman View No. 2 Complete Outfit*	62.00	73.00	83.00	88.00
Complete Outfit as above, but with Rapid Rectigraphic instead of Symmetrical Lens	72.00	85.00	97.00	102.00
Extra Carrying Case	5.00	5.50	6.00	7.00
Extra Lens Board60	.75	.75	1.25

*Eastman View No. 2 Complete Outfit includes: Eastman View No. 2 Camera, Symmetrical Lens, Automatic Shutter, six Film or Plate Holders, Combination Tripod, Focusing Cloth, and Case to hold complete outfit. See illustration similar outfit, page 27.

Plate Holders

PREMO PLATE HOLDER

Premo holders are made absolutely light tight by a fully patented light-lock. This device is shown in cut and is constructed of finely tempered, non-corrosive metal with independently operating spring fingers overlaid with a closely woven, specially prepared fabric. A slide can be inserted cornerwise without admitting light to the plate. Fitted with lacquered press-board slides that will not electrify, collect dust, crack or split.



$3\frac{1}{4} \times 4\frac{1}{4}$.	\$1.25	4×5	.	\$1.25	$6\frac{1}{2} \times 8\frac{1}{2}$.	\$1.75
$3\frac{1}{4} \times 5\frac{1}{2}$.	1.25	5×7	.	1.50			

EASTMAN VIEW HOLDER

These holders are made with bottom flap, avoiding all danger of plates falling out. They are strongly constructed, have patented spring finger light-lock, and made to fit both models of the Eastman View Camera. Slides are of lacquered press-board.

5×7	.	\$1.50	8×10	.	\$1.75	7×11	.	\$1.75
$6\frac{1}{2} \times 8\frac{1}{2}$.	1.60						

UNIVERSAL PLATE HOLDER

Made in the same style as the Eastman View Holder but to fit Empire State and Premo View Cameras.

5×7	.	\$1.50	8×10	.	\$1.75	14×17	.	\$5.00
$6\frac{1}{2} \times 8\frac{1}{2}$.	1.60	11×14	.	4.00			

EASTMAN PORTRAIT FILM HOLDERS

For use with portrait films, to fit Eastman View, Universal and Premo View Cameras.

5×7	.	\$1.25	8×10	.	\$1.50	11×14	.	\$4.00
$6\frac{1}{2} \times 8\frac{1}{2}$.	1.35	7×11	.	1.50			

R. O. C. PLATE HOLDER

This holder is of good construction, it has the patented light trap feature of the Premo holders, and is adapted for use in the R. O. C. View Camera.

5×7	.	\$1.25	$6\frac{1}{2} \times 8\frac{1}{2}$.	\$1.35	8×10	.	\$1.50
--------------	---	--------	------------------------------------	---	--------	---------------	---	--------

PLATE HOLDER AND ADAPTER SLIDES

LACQUERED PRESSBOARD

$3\frac{1}{4} \times 4\frac{1}{4}$.	\$.20	5×7	.	\$.25	8×10	.	\$.40
$3\frac{1}{4} \times 5\frac{1}{2}$.	.20	$6\frac{1}{2} \times 8\frac{1}{2}$.	.30	11×14	.	.60
4×5	.	.20						

HARD RUBBER

5×7	.	\$.35	$6\frac{1}{2} \times 8\frac{1}{2}$.	\$.50	8×10	.	\$.65
--------------	---	-------	------------------------------------	---	-------	---------------	---	-------

Film, Plates and Paper

PREMO FILM PACKS



Premo Film Packs contain 12 exposures of Eastman N. C. Speed Film, which is non-curling, non-halation, and orthochromatic to a considerable degree. The gradation and fineness of grain is of the highest quality.

Size.	Per Pack.
1 3/4 x 2 3/8, No. 300	\$.25
2 1/4 x 3 1/4, No. 320	.40
2 1/2 x 4 1/4, No. 316	.50
3 1/4 x 4 1/4, No. 318	.70
3 x 5 1/4, No. 342	.75
3 1/4 x 5 1/2, No. 322	.80
4 x 5, No. 323	.90
5 x 7, No. 315	1.60

GLASS DRY PLATES

Seed, Standard or Stanley.

Size.	Price per Dozen.	Size.	Price per Dozen.	Size.	Price per Dozen.
2 1/4 x 3 1/4	\$.35	4 x 5	\$.65	5 x 8	\$1.25
3 1/4 x 4 1/4	.45	4 1/4 x 6 1/2	.90	6 1/2 x 8 1/2	1.65
3 1/4 x 5 1/2	.65	5 x 7	1.10	8 x 10	2.40

EASTMAN PORTRAIT FILM

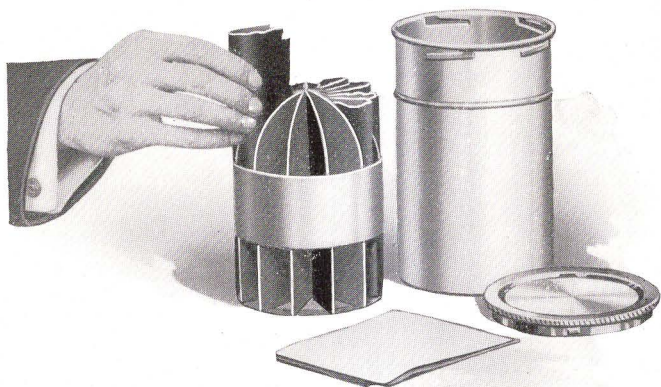
Including three Eastman Safety Envelopes for storing.

Size.	Price per Dozen.	Size.	Price per Dozen.	Size.	Price per Dozen.
5 x 7	\$1.10	8 x 10	\$2.40	11 x 14	\$6.00
6 1/2 x 8 1/2	1.65	7 x 11	2.40		

VELOX PAPER AND SUNDRIES

Size.	Single Weight.			Double Weight.		
	Doz.	1/2 Gross.	Gross.	Doz.	1/2 Gross.	Gross.
1 1/8 x 2 1/8 (For No. 00 negatives)	\$.10	\$.60	\$1.00	\$.15	\$.75	\$1.25
2 1/4 x 3 1/4	.10	.60	1.00	.15	.75	1.25
2 1/2 x 4 1/4	.12	.70	1.25	.18	.90	1.55
3 1/4 x 4 1/4	.15	.80	1.50	.20	1.00	1.90
2 7/8 x 4 7/8	.15	.80	1.50	.20	1.00	1.90
3 1/4 x 5 1/2	.15	.80	1.50	.20	1.00	1.90
4 x 5	.20	1.10	2.00	.25	1.40	2.50
5 x 7	.35	2.00	3.50	.45	2.50	4.40
Velox Post Cards				.20	1.10	2.00
N. A. (Non-Abrasion) Velox Liquid Developer, 4-ounce bottle (makes 20 ozs. for Special, 12 ozs. for Regular)						.28
Ditto, 16-ounce bottle						.84
Nepera Solution, per 4-ounce bottle						.28
Ditto, per 16-ounce bottle						.84
Velox Re-developer for Sepia Tones, per 4-ounce bottle						.50
Ditto, 2 ounces (sufficient for 150 4 x 5 prints)						.30
Kodak N. A. M. Q. Developer, per package 3 tubes						.35

Premo Film Pack Tank



FOR the amateur who wishes to do his own work, the difficulties and uncertainties of development are entirely removed by the Premo Film Pack Tank. Absolutely no experience or technical skill is required to get perfectly developed negatives. The tank method of development is automatic and scientifically exact. If instructions are followed, with the tank, one with no photographic knowledge whatever can get as perfectly developed negatives from every film as could an expert by any method.

The Premo Film Pack Tank consists of two pieces—a metal receiver or cage for the films, and a tank with cover for the developing fluid. The entire outfit is self-contained and can be easily carried in a corner of a suitcase.

The cage is divided into twelve compartments—in the 5 x 7 size, six—each accommodating one film. As the film is taken from the pack, it is held between the thumb and fingers, slightly bent from top to bottom, and slipped into its respective compartment. When all the compartments are filled, the cage is placed in the tank, which has been previously filled with developer, the top replaced and the films left to develop for a certain specified time. No further attention is necessary except to turn the tank end for end several times during the progress of development.

Premo Film Pack Tank

At the expiration of the full time, open the tank, take out the cage, remove films, place them in a tray of water for a moment, then transfer to the fixing bath. Development is completed. Rinse out cage and tank and set them aside.

The operation of removing films from the pack and loading the cage is done, of course, in a darkened room by the light of a ruby lamp. During the day any darkened closet will suffice; at night any dark room in which the shades are drawn will answer. To load the films in cage will take only two or three minutes, and as soon as the top is placed on tank it may be brought out into any light and left until development is completed. Night is really an ideal time to develop films as they can be fixed and washed in a short time and will dry over night, being all ready to print from in the morning.

If it is desired to develop less than a dozen films, one merely removes from his pack as many films as have been exposed, places them in the cage, and proceeds in the same manner as described above.

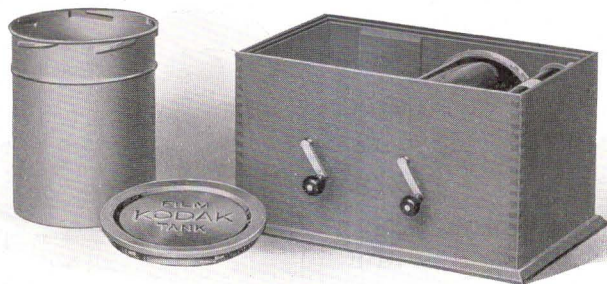
The cage of the No. 1 Tank is slightly different from that shown in the illustration, but the method of loading is the same and, of course, the results are just as dependable in every respect.

Particular attention is called to the necessity of using Premo Tank developing powders for normal development in Premo Film Pack Tanks. If Kodak Tank powders are used a longer time for development must be given. Follow closely the instructions which come with every film pack.

PRICES

Premo Film Pack Tank No. 1 for 12 $1\frac{3}{4} \times 2\frac{3}{8}$ or $2\frac{1}{4} \times 3\frac{1}{4}$ films	\$ 1.50
Ditto, No. 2 for 12 $2\frac{1}{2} \times 4\frac{1}{4}$, $3\frac{1}{4} \times 4\frac{1}{4}$, $3 \times 5\frac{1}{4}$, $3\frac{1}{4} \times 5\frac{1}{2}$ or 4 x 5 films	4.00
Ditto, No. 3 for 6 5 x 7 films	4.50
Premo Tank Developing Powders, in packages of 6, No. 1	.20
Premo Tank Developing Powders, in packages of 6, No. 2	.25
Premo Tank Developing Powders, in packages of 6, No. 3	.35
Kodak Acid Fixing Powder, per 1 pound package	.25
Ditto, per $\frac{1}{2}$ pound package	.15
Ditto, per $\frac{1}{4}$ pound package	.10

Kodak Film Tank



THE Kodak Film Tank not only develops roll film automatically but it does it in broad daylight, eliminating the necessity for a dark room during any part of the photographic process.

This tank consists of a winding box, a light-proof apron, and a heavily nickeled brass solution cup with cover. In the Brownie Film Tank, however, no cover is necessary as the film roll itself is turned.

The film to be developed is placed upon a reel in the winding box, the cover is placed on the box and the film is wound into the apron, which protects it from light, permitting safe removal from the box. It is then lowered into the cup of developer, the cover attached and the film left to be developed for twenty minutes. After development the film is removed for fixing.

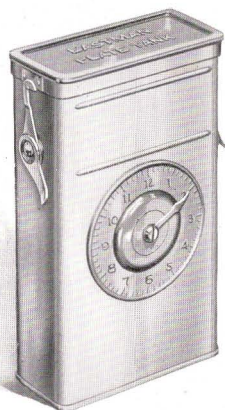
PRICES

Brownie Kodak Film Tank, for use with No. 2 and No. 2 Folding Cartridge Premo cartridges, complete	\$ 2.75
Cover for same25
2½-inch Kodak Film Tank, for use with all cartridges having a film width of 2½ inches or less, complete	4.00
3½-inch Kodak Film Tank, for use with all Kodak and Brownie cartridges having a film width of 3½ inches or less, complete	5.50
Flexible Rubber Tray, for 3½-inch Kodak Film Tank	1.40
Kodak Tank Developer Powders for Brownie Kodak Film Tank, per package ½ dozen15
Ditto, for 2½-inch tank, per package, ½ dozen20
Ditto, for 3½-inch tank, per package, ½ dozen20

Eastman Plate Tank

IN the Eastman Plate Tank, plates may be developed in the same manner and with the same assurance of excellent results obtained with films developed in the Premo Film Pack Tank. The theory of construction is precisely the same, with of course such differences as are necessary because of the physical differences between films and plates.

It consists of a metal solution cup, a cage for holding twelve (or less) plates and a simple device for loading plates into the cage. In the $3\frac{1}{4} \times 4\frac{1}{4}$, $3\frac{1}{4} \times 5\frac{1}{2}$ and 4×5 sizes, the cage of plates may be developed in a Premo Film Pack Tank, so that one using a Premo that takes films or plates and having a Premo Film Pack Tank needs only to purchase the cage of the plate tank for the development of his plates.

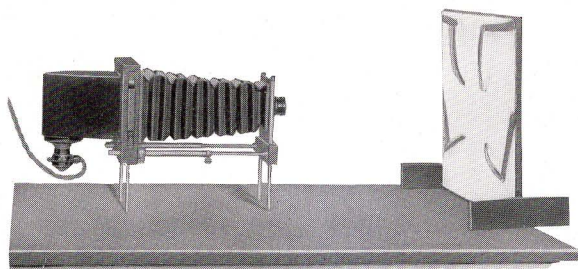


It is thus apparent that the owner of a Premo plate camera can not only use films or plates in his camera with equal facility, but he can also avail himself of the advantages of tank development with either medium.

PRICES

Eastman Plate Tank for 4×5 , $3\frac{1}{4} \times 5\frac{1}{2}$ or smaller plates, includes Solution Cup, Plate Cage, Loading Fixture and Adjustable Kit	\$ 4.00
Ditto, 5×7 , without Kit	5.00
Ditto, 8×10 , with Adjustable Kit	12.00
Adjustable Kit for 4×5 or $3\frac{1}{4} \times 5\frac{1}{4}$ Tank, to take smaller plates	.60
Kits for 5×7 Tank, to take $3\frac{1}{4} \times 5\frac{1}{2}$, $4\frac{1}{4} \times 6\frac{1}{2}$ or $4\frac{3}{4} \times 6\frac{1}{2}$ plates, each,	1.00
Extra Adjustable Kit for 8×10 Plate Tank	1.25
Plate Cage and Loading Fixture for 4×5 and $3\frac{1}{4} \times 5\frac{1}{2}$ plates (can be used in a 4×5 Premo Film Pack Tank)	1.50
Eastman Plate Tank Powders, for 4×5 Tank, per package $\frac{1}{2}$ doz.	.20
Ditto, for 5×7 Tank, per package, $\frac{1}{2}$ dozen	.40
Ditto, for 8×10 Tank, per package, $\frac{1}{2}$ dozen	.75
Kodak Acid Fixing Powder, per 1-pound package	.25
Ditto, per $\frac{1}{2}$ -pound package	.15
Ditto, per $\frac{1}{4}$ -pound package	.10

The Kodak Enlarging Outfit



THE Kodak Enlarging Outfit is a thoroughly practical apparatus for the amateur who wishes to make his own enlargements. The Negative Carrier will accommodate film or plate negatives of any size up to 4 x 6, and enlargements up to the size of the easel (14 x 17), may easily be made.

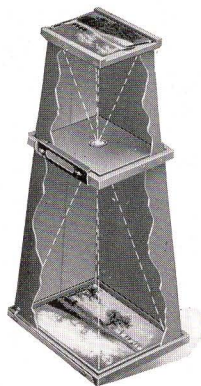
The Outfit includes Enlarging Camera, Lens and Diaphragm (largest stop U. S. 4), Lamp House, Cord and Socket, but does not include the 60 Watt Mazda Electric Light Bulb.

Kodak Enlarging Outfit - - - \$15.00

Brownie Enlarging Camera

THE Improved Brownie Enlarging Camera consists of a light-tight cone with attachments to hold a negative at the small end, and a sheet of Bromide or Velox paper at the other. Exposures may be made to the sky or with the Brownie Illuminator specially designed for electric illumination of the negative.

No. 2 Brownie Post Card Enlarging Camera for post card ($3\frac{1}{4} \times 5\frac{1}{2}$) enlargements from $2\frac{1}{4} \times 3\frac{3}{4}$ negatives	\$ 2.50
No. 2 Brownie Enlarging Camera, for 5 x 7 enlargements from $2\frac{1}{4} \times 3\frac{3}{4}$ negatives	3.00
No. 3 Ditto, for $6\frac{1}{2} \times 8\frac{1}{2}$ enlargements from $3\frac{1}{4} \times 4\frac{1}{4}$ negatives	4.00
No. 4 Ditto, for 8 x 10 enlargements from 4 x 5 negatives or $6\frac{1}{8} \times 9\frac{3}{4}$ enlargements from $3\frac{1}{4} \times 5\frac{1}{2}$ negatives	4.50
Brownie Illuminator	3.50



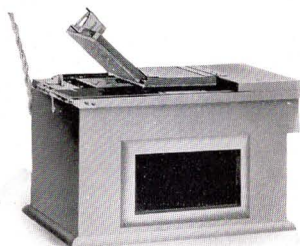
Premo Accessories

KODAK AMATEUR PRINTER

A CONVENIENT and practical printer for making prints upon developing out paper. Prints may be made with white margins in any size from $1\frac{5}{8} \times 2\frac{1}{2}$ to $4 \times 5\frac{1}{2}$ inches, by means of the adjustable masking device, which also holds the negative firmly until released.

Within the box, a small red electric lamp enables the operator to properly place the negative and paper. When ready for exposure, the hinged pressure board is closed and locked, and a 60 Watt Mazda Lamp for which provision is made, is automatically lighted. The window on the side provides a safe dark-room light for developing out and bromide papers.

It is supplied complete, without lamp, but including $5\frac{1}{2}$ feet of electric light cord and socket.



The Kodak Amateur Printer \$6.00

VELOX TRANSPARENT WATER COLOR STAMPS

ANYONE can make beautifully colored prints by the use of Velox Transparent Water Color Stamps.

No special artistic skill, no knowledge of painting whatever is necessary. Just a brush or two and the book of stamps, which includes simple directions for coloring both prints and lantern slides.

Each book includes twelve sheets of colors and each sheet is divided by perforations into twenty-two stamps. To use any color merely tear off a stamp, place in a small saucer or palette supplied with the outfit, and cover with about a teaspoonful of water.

Velox Transparent Water Color Stamps, complete booklet, 12 colors	\$ 0.25
Separate Color Leaves, two sheets05
Set of 3 Special Brushes, per set50
Mixing Palette25
Velox Transparent Water Color Stamp Outfit, including book, three brushes and palette75

Premo Accessories

KODAK METAL TRIPOD



Combining light weight and compactness with exceptional rigidity, this is an ideal tripod for cameras up to 5x7.

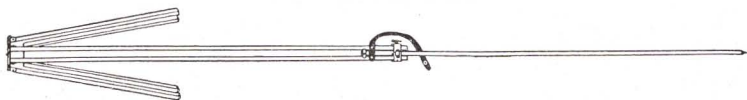
Has telescoping legs of brass tubing—lower sections nickeled, the upper black enameled—should a part become inoperative through wear or accident, any section may be removed for repairs. This is a unique feature among metal tripods.

When extended each section catches and holds firmly. To close, it is necessary to press in top catch only, the others then releasing automatically.

The Nos. 1 and 2 have revolving heads for attaching to camera. With this construction the camera may be swung, so as to take in the desired view without moving the tripod, a distinct advantage over other types of metal tripods. The Nos. 1 and 2 also have straps for holding the legs in place when closed. The No. 6 has folding head and folds into such a compact flat package that it can easily and conveniently be carried in the pocket.

	Section.	Closed.	Length Extended.	Weight.	Price.
Kodak Metal Tripod No. 0	3	15½ in.	39½ in.	15 ozs.	\$ 2.75
Kodak Metal Tripod No. 1	4	15 in.	48½ in.	24½ ozs.	4.00
Kodak Metal Tripod No. 1C	4	15¼ in.	48¾ in.	25½ ozs.	3.75
Kodak Metal Tripod No. 2	5	13½ in.	49½ in.	25 ozs.	4.50
Kodak Metal Tripod No. 2C	5	13¾ in.	49¾ in.	26 ozs.	4.25
Kodak Metal Tripod No. 6	6	11¾ in.	40 in.	24 ozs.	6.50
Leatherette Case for No. 0 or No. 175
Leather Carrying Case for any style	2.25
Rubber tips for use indoors, for any size, per set of three10

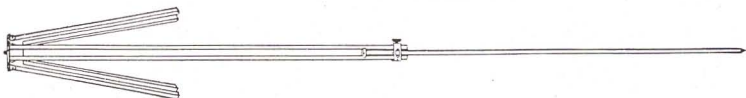
FLEXO TRIPOD



For cameras up to and including the 5x7 size this is a very satisfactory tripod at small expense. Only clear, straight grained spruce is used in its construction.

Price, \$1.00

BULL'S-EYE TRIPOD



Two sections. Aluminum revolving head. Made of maple with brass fittings. For 4x5 cameras, or smaller. Length, extended 42½ inches; folded, 24 inches. The only two-section tripod that will go into a suitcase.

Price, \$1.75

Premo Accessories

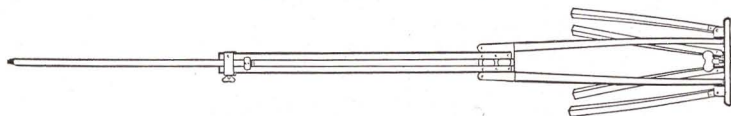
STANDARD TRIPOD



The feature of this tripod is the automatic locking of the sections when they are extended. Light, compact and rigid. Fixed, non-detachable head. Length, folded, 21 inches; extended 53½ inches. Weight, 18 ounces. Cherry finish, brass trimmings.

Price, \$2.50

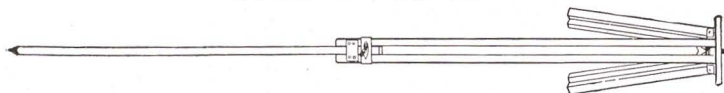
COMBINATION TRIPOD



This tripod is made on the sliding and folding principle. The wood parts are of ash and the finish is of the very best.

Style.	Size of Camera.	Weight.	Price.
No. 2½	6½ x 8½ and smaller	3 lbs.	\$4.00
No. 3	8 x 10 and 10 x 12	4 lbs.	4.50
No. 4	11 x 14 and 14 x 17	5 lbs.	5.50
No. 5	17 x 20 and 20 x 24	8 lbs.	8.00

SLIDING TRIPOD



A perfectly rigid tripod for the heaviest cameras. The No. 1 and No. 2 are made of spruce, the No. 3 and No. 4 of ash.

Style.	Size of Camera.	Weight.	Price.
No. 1	5 x 7 and smaller	2 lbs.	\$2.00
No. 2	5 x 8 and 6½ x 8½	2 lbs. 8 ozs.	2.50
No. 3	8 x 10 and 10 x 12	4 lbs. 8 ozs.	3.00
No. 4	11 x 14 and 14 x 17	6 lbs. 8 ozs.	4.00

EASTMAN TRIPOD BRACE

An exceedingly simple device for holding the tripod legs in position when extended. Cannot collapse.

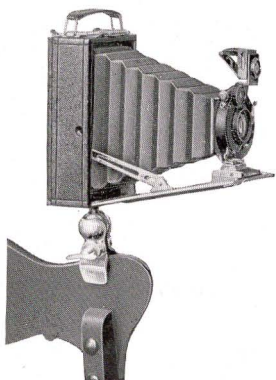
Eastman Tripod Brace Price, \$1.25

R. O. C. TRIPOD TRUCK

An excellent device for those who use a tripod indoors. Perfectly solid when extended, supplied with casters and folds compactly when not in use.

R. O. C. Tripod Truck	{ No. 1 for average tripods . . .	\$1.25
	{ No. 2 for very heavy tripods . . .	1.50

Premo Accessories



THE UNIVERSAL CLAMP

The Universal Clamp is a small, convenient substitute for a tripod which may be attached to any camera. It can be carried readily in the pocket, is very light, and may be attached to a chair, fence, automobile or motorcycle handle bar. The clamp jaws are padded with felt.

The Universal Clamp . . . \$.75

UNIVERSAL TRIPOD HEAD

This is made upon the same principle as the Universal Clamp described above, but in place of the clamp jaws, is provided with a solid head with socket which will accommodate any regular tripod screw. With this

device the camera can be used on a tripod and tilted to any angle up to 90 degrees.

Universal Tripod Head . . . \$.75



THE KODAPOD

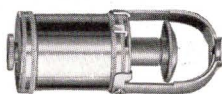
This little device serves the purpose of a tripod, and may readily be carried in the pocket. Its jaws are actuated by a strong spring, and when attached to a tree, fence or similar object, it provides a firm support for a camera. The adjustable head permits using the camera in horizontal, vertical, or any desirable position.

The Kodapod . . . \$1.25

KODAK SELF TIMER

The Kodak Self Timer may be adjusted to automatically release the shutter at the required time, permitting the operator of the camera to be included in the picture.

The Timer is made in one size, and will only operate shutters fitted with Cable Release.



Kodak Self Timer . . . \$1.25

Premo Accessories

KODAK PORTRAIT ATTACHMENT

This is simply an extra lens which fits on in front of the regular lens and in no way affects the operation of the camera, excepting to so change the focus as to permit working close to the subject, thereby giving good sized head and shoulder portraits. Order by number.



No. 0.	For Permo Jrs. 1 and 1A and Cartridge Premos Nos. 2 and 2A	\$ 0.50
No. 3.	For Premoette Jr. No. 1A, both single and double lens; Premoette Jrs. Nos. 1 and 1A, <i>f.7.7</i> ; $2\frac{1}{2} \times 4\frac{1}{4}$ and $3\frac{1}{4} \times 4\frac{1}{4}$ Premoette Sr., both R. R. and <i>f.7.7</i> lens; Premos Jrs. Nos. 3 and 4, No. 2A Folding Cartridge Premo with single or R. R. lens, Premo No. 12, <i>f.7.7</i>	\$ 0.50
No. 4.	For No. 2C Cartridge Premo (Box Style)	.50
No. 5.	For all 4×5 , 3A and 5×7 Premos Nos. 8, 9 and 10; 3A Premoette Sr., R. R. lens; Nos. 2C and 3A Folding Cartridge Premos, both single and double lenses	.50 .50
No. 6.	For Premoette Jr. No. 1A Special and Premo No. 12, <i>f.6.3</i> , Premo No. 12 with Kodak Anastigmat lens, <i>f.6.3</i> , and all B. & L. Anastigmats	.50
No. 7.	For $3\frac{1}{4} \times 5\frac{1}{2}$ Premoette Sr. <i>f.7.7</i> and 3A and 4×5 Premos No. 9 when fitted with <i>f.7.7</i> lens	.50
No. 8.	For Premoette Jr. No. 1, both single and double lens, No. 1 Special, No. 2 Folding Cartridge Premo with single or R. R. lens and Premo No. 12, with R. R. lens	.50

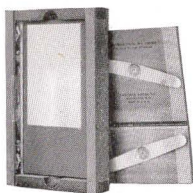
KODAK SKY AND COLOR FILTERS

The Kodak Sky Filter is designed to equalize the great difference in light between sky and foreground in landscape photography. Therefore only the upper half of the sky filter is stained yellow, the lower half being colorless. The Kodak Color Filter is stained throughout and is for use for all subjects, such as flowers, for instance, embracing colors which act weakly on the sensitive films. Specify which is wanted.

No. 0.	For Premo Jrs. Nos. 1 and 1A and Cartridge Premos No. 2 and 2A	\$ 0.50
No. 3.	For Premoette Jr. No. 1A, both single and double lens; Premoette Jrs. Nos. 1 and 1A, <i>f.7.7</i> ; $2\frac{1}{2} \times 4\frac{1}{4}$ and $3\frac{1}{4} \times 4\frac{1}{4}$ Premoette Sr., both R. R. and <i>f.7.7</i> lens; Premos Jrs. Nos. 3 and 4, No. 2A Folding Cartridge Premo with single or R. R. lens, Premo No. 12, <i>f.7.7</i>	.75
No. 4.	For No. 2C Cartridge Premo (Box Style)	.75
No. 5.	For all 4×5 , 3A and 5×7 Premos Nos. 8, 9 and 10; 3A Premoette Sr., R. R. lens; Nos. 2C and 3A Folding Cartridge Premos, both single and double lenses	1.00
No. 6.	For Premoette Jr. No. 1A Special and Premo No. 12, <i>f.6.3</i> , Premo No. 12 with Kodak Anastigmat lens, <i>f.6.3</i> , and all B. & L. Anastigmats	.75
No. 7.	For $3\frac{1}{4} \times 5\frac{1}{2}$ Premoette Sr. <i>f.7.7</i> and 3A and 4×5 Premos No. 9 when fitted with <i>f.7.7</i> lens	1.00
No. 8.	For Premoette Jr. No. 1, both single and double lens, No. 1 Special, No. 2 Folding Cartridge Premo with single or R. R. lens, Premo No. 12 with R. R. lens and Pocket Premo	.50

Premo Accessories

MASKIT PRINTING FRAME

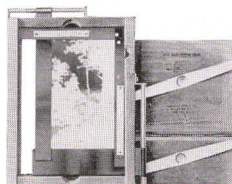


This frame is furnished with a series of paper masks and a patented simple-working device on the inside of the frame holds mask, paper and negative firmly together, assuring uniform white margins and preventing all chance of slipping.

Kodak Maskit Printing Frame, $3\frac{1}{4} \times 4\frac{1}{4}$, opens two-thirds	\$.40
Ditto, $3\frac{1}{4} \times 5\frac{1}{2}$, opens two-thirds45
Ditto, 5×7 , opens two-thirds50

AUTO-MASK PRINTING FRAME

An adaptation to a printing frame of the masking principle of the highly successful Kodak Amateur Printer. Will accommodate negatives of any size up to and including 4×5 and $3\frac{1}{4} \times 5\frac{1}{2}$. It is a very simple matter to adjust the mask for uniform masking of any negative you care to use, a graduated scale attached to the stationary guide aiding in sizing and holding exact dimensions of the mask openings.



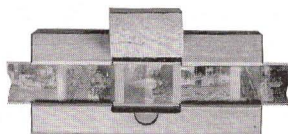
Kodak Auto-Mask Printing Frame . . . \$1.25

EASTMAN PRINTING FRAME

Standard Printing Frames, strongly constructed of suitable material.

Eastman, for $2\frac{1}{4} \times 3\frac{1}{4}$ plates or $1\frac{1}{4} \times 2\frac{1}{2}$ or smaller films	\$.25
Eastman, $2\frac{1}{2} \times 4\frac{1}{4}$, $3\frac{1}{4} \times 4\frac{1}{4}$ or 4×5 , opens two-thirds30
Eastman, $3\frac{1}{4} \times 5\frac{1}{2}$, for films, opens two-thirds30
Ditto, for plates35
Eastman, 5×7 , opens two-thirds40

KODAK SERIAL PRINTING FRAME



These frames are designed for printing No. 00 Cartridge Films in the continuous strip, making it unnecessary to cut up these small size rolls, as the film slides through the frame from exposure to exposure. No. 1 is provided with tension spring and is especially suitable for printing

on Solio paper or from dense negatives, on Velox, where long exposures are required. No. 1A is for use with developing-out paper only, where average exposures are required, contact being maintained by pressure of the fingers as the frame is held up to the light. With no other type of frame can printing be handled so rapidly. The illustration shows No. 1A.

Kodak Serial Printing Frame, No. 1, \$.35; No. 1A, \$.40

Premo Accessories

KODAK CANDLE LAMP

This lamp is collapsible, well made, of special tested ruby fabric, bound in metal frames.



Kodak Candle Lamp . . . \$.25
Extra Candles for same, per doz. .40



KODAK DARK ROOM LAMP

The Kodak Dark Room Lamp is oil burning and is fitted with both orange and ruby glass.

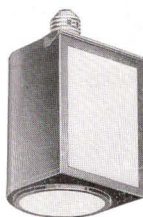
No. 2 Kodak Dark Room Lamp \$1.00

BROWNIE SAFELIGHT LAMP

An inexpensive but reliable safelight lamp for the amateur. The complete lamp screws into any electric socket. It takes a 15-watt Mazda bulb and has removable circular safelight in the bottom and square one on the side.

A very convenient, clean lamp for the average amateur and easily carried in the bag of the traveler or vacationist for use as required.

Brownie Safelight Lamp \$1.00
Extra Safelights No. 1B Circular, \$.20; Side, .30



KODAK SAFELIGHT LAMP

Those who have electricity in the house will find this lamp much superior to other types for dark room work. It is supplied with a 5 x 7 Series I Safelight for use with films or plates not color sensitive. For more advanced work Safelights of other Series may be readily substituted.

Price includes safelight and four feet of electric cord with socket.

Kodak Safelight Lamp . . . \$8.00



KODAK TRIMMING BOARD

A thoroughly reliable trimming board at a moderate price, constructed of hard wood with natural finish. The blade is of the best steel and a rule is fitted to the board.



No. 1, 5 x 5 inches . . . \$.50
No. 2, 7 x 7 inches,70
Transparent Trimming Gauge for No. 1 (extra) . . .25
Do., No. 235

Premo Accessories

DEVELOPING TRAYS

Bulls-Eye, $3\frac{1}{4} \times \frac{1}{4}$. . . \$.20	Bulls-Eye, $6\frac{1}{2} \times 8\frac{1}{2}$. . . \$.75
Bulls-Eye, 4 x 5 or 4 x 625	Bulls-Eye, 8 x 10	. . . 1.00
Bulls-Eye, 5 x 745		

EASTMAN VISIBLE GRADUATE

This new moulded graduate, as its name implies may be easily read in the dark-room under the rays of the ruby light.

The graduations are opaque and not translucent as in the case with most graduates.

2 ounce	. . . \$.25	8 ounce	. . . \$.50
4 ounce35	16 ounce75



THERMOMETER STIRRING ROD



Two articles of great use to the amateur, combined in one. The rod is $\frac{1}{4}$ -inch in diameter and 9 inches long. One end is flattened for crushing purposes. The thermometer is carefully tested and is unusually accurate.

Price, \$1.00

EASTMAN THERMOMETER



Especially suitable for determining the temperature in tank development. Made with curved back to fit inside of tank.

Price, \$.75

DEVELOPING AND PRINTING OUTFITS

Eastman 3A Outfit includes every requisite for developing by the dark room method, printing and finishing twenty-four $3\frac{1}{4} \times 5\frac{1}{2}$ or smaller pictures.

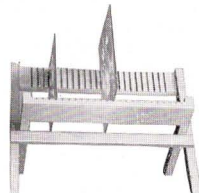
I Kodak Candle Lamp, 25c; 1 Printing Frame, 30c; 1 Glass for Frame, 5c; 1 4-ounce Graduate, 20c; 1 Stirring Rod, 5c; 4 Developing Trays, 40c; 5 Tubes Eastman's Special Developer, 25c; $\frac{1}{2}$ pound Kodak Acid Fixing Powder, 15c; 1 package Bromide Potassium, 10c; 2 dozen $3\frac{1}{4} \times 5\frac{1}{2}$ Velox Paper, 30c; 2 ounces Nepera Solution, for developing Velox, 10c; Instruction Book. These articles if purchased separately would cost \$2.15. Price complete, neatly packed, \$1.65.

A B C Outfit, similar to above, but for 4 x 5 negatives, \$1.65.

PREMO NEGATIVE RACK

This rack accommodates negatives of all sizes. It folds flat when not in use.

No. 1, for 12 negatives	. . . \$.25
No. 2, for 24 negatives35



Premo Accessories

KODALOID PRINTING MASKS

Transparent orange color masks for use with Maskit Printing Frames in sets of three each with different openings.

For $3\frac{1}{4} \times 4\frac{1}{4}$ frame, per set of three	\$.20
For $3\frac{1}{4} \times 5\frac{1}{2}$ frame, per set of three25
For 5×7 frame, per set of three30

Black Paper Masks, same sizes as above.

Price, per set of three, any size	\$.10
---	--------

FLEXO PRINT ROLLER



An inexpensive but very satisfactory roller for amateur use; has black enameled frame and a 4-inch rubber roller.

Price, \$.25

KODAK PRINT ROLLER

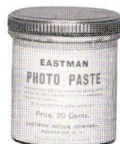
The best roller ever made for general amateur use; has double rubber rollers, 2×6 inches, and nickled frame.



Price, \$.75

EASTMAN PHOTO PASTE

A solid, first quality white paste. Will not cockle nor discolor print or mount.



Jars.		Tubes.	
4 ounce	\$.15	2 ounce	\$.10
8 ounce25	3 ounce15
		5 ounce25

FLASH-LIGHT MATERIAL

The simplest and safest method of making flashlight pictures is by means of the Eastman Flash Sheets and Kodak Flash Sheet Holder. The sheets burn slowly, giving a broad, soft light, and not so startling the subject as to give a staring effect to the eyes.

The holder is a genuine innovation. A saw tooth holds the sheet in proper position and it is lighted from the back through an aperture provided in the center for the purpose. In this manner the holder is always between the operator and the flash sheet, and it may be held in the hand or supported on a tripod, a socket being provided for the latter purpose.

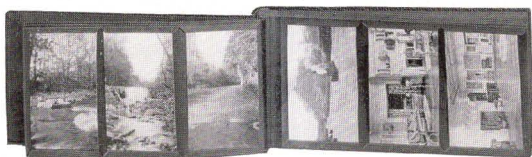


*No. 1 Flash Sheets, per package of $\frac{1}{2}$ dozen sheets, 3×4	\$.35
*No. 2 Flash Sheets, per package of $\frac{1}{2}$ dozen sheets, 4×5	.56
*No. 3 Flash Sheets, per package of $\frac{1}{2}$ dozen sheets, 5×7	.84
Kodak Flash Sheet Holder	1.00

*Prices subject to change without notice.

Premo Accessories

THE KODAK ALBUM



Made on a new principle, which does away with mounting prints by paste or otherwise. They are merely slipped into pocket strips at top and bottom, and will not come out unless removed by hand. Has handsome grain leather cover and black leaves with linen finish.

[illegible]

THE HERCULES ALBUM

A distinct innovation in a loose-leaf album. Has solid back and flexible cover of genuine leather in an unusually attractive blend of grey and black. Has pocket in back cover for extra prints and an end flap so that album can be closed with clasp, imparting a very finished look to it. An album that will decorate the finest library table.

A, 5 x 8	\$3.00	B, 7 x 11	\$4.00	C, 10 x 12	\$5.50	D, 9 x 14	\$6.00
Pkg. 12 extra leaves	.12		.15		.30		.35

THE TIBER ALBUM

A very flexible loose leaf album with imitation leather covering and 50 black leaves.

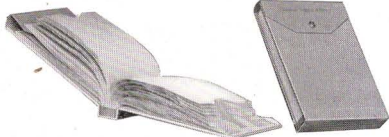
A, 5 x 8	\$1.00	B, 7 x 11	\$1.80	C, 10 x 12	\$1.80	D, 9 x 14	\$2.00
Pkg. 12 extra leaves	.12		.15		.25		.30

THE FORUM ALBUM

Flexible black leather embossed cloth cover.

A.	25 black leaves,	N.	25 Sepia leaves	5½ x 7		\$.60
B.	25 black leaves,	O.	25 Sepia leaves,	7 x 10		.75
C.	25 black leaves,	P.	25 Sepia leaves,	10 x 7		.75
D.	25 black leaves,	R.	25 Sepia leaves	11 x 14		1.50
E.	50 black leaves,			5½ x 7		.75
F.	50 black leaves,			7 x 10		1.00
G.	50 black leaves,			10 x 7		1.00
H.	50 black leaves,			11 x 14		1.75

EASTMAN FILM NEGATIVE ALBUMS



For 100 negatives, $2\frac{1}{2} \times 4\frac{1}{4}$ or smaller	\$.75
For 100 negatives, $3\frac{1}{4} \times 4\frac{1}{4}$, or 4×5	1.00
For 100 negatives, $3\frac{1}{4} \times 5\frac{1}{2}$ or smaller	1.00
For 100 negatives, 5×7 , or smaller	1.50

Premo Accessories

CARD MOUNTS

BALTIC

Buff, Brown or Grey

Heavy stock, beveled edge, heavy borders—a beautiful rich mount.

For Prints.	Size Outside.	Per 50	Per 100
2¼ x 3¼	4¾ x 5¾	\$.75	\$1.50
2½ x 4¼	4½ x 6¼	.85	1.65
3¼ x 4¼	5½ x 6½	.90	1.80
2½ x 4½	5½ x 7½	.95	1.90
3¼ x 5½	5¾ x 8	1.10	2.20
4 x 5	6 x 7	1.20	2.40
5 x 7	8 x 10	1.75	3.50

TRIUMPH

Made in Ash Grey and Aristo Brown

For Prints.	Size Outside.	Per 100	Per 50
5 x 7	8 x 10	\$ 3.50	
6½ x 8½	10 x 12	4.70	
8 x 10	12 x 14	6.35	
7 x 11	11 x 15	7.00	

RIVIERA

Ash Grey and White

For Prints.	Size Outside.	Per 50	Per 100
1½ x 2	3 x 3½	\$.40	\$.80
2¼ x 3¼	3¾ x 4¾	.50	1.00
2½ x 4¼	4¾ x 5¾	.60	1.15
3¼ x 4¼	4¼ x 5½	.60	1.15
2½ x 4½	4½ x 6½	.70	1.35
4 x 5	5½ x 6½	.80	1.55
3¼ x 5½	5 x 7¼	.80	1.55
5 x 7	7 x 9	1.15	2.30

ENLARGEMENT FOLDER

Made with White Insert Olive Grey

Cover. Sepia Buff Insert—Brown Cover

For Prints.	Size Outside.	Per 1/2 Doz.	Per 1/2 Doz.
5 x 7	7½ x 9½	\$.66	
6½ x 8½	8¾ x 10¾	.78	
6 x 10	9 x 13	.90	
8 x 10	10¾ x 13	.96	

INSLIP ENLARGEMENT MOUNT

Color, English Grey or Sepia-Buff.

For Prints.	Size Outside.	Price Per Dozen.	For Prints.	Size Outside.	Price Per Dozen.
A 3¼ x 5½	7¼ x 9 ¾	\$.65	E 5 x 8½	9¾ x 13½	.76
B 3¾ x 5½	8½ x 9¾	.65	F 6½ x 8½	11¾ x 13¾	.84
C 4¼ x 6½	8½ x 10¾	.65	G 6 x 10	10¾ x 14¾	.90
D 5 x 7	9¾ x 11¾	.65	H 8 x 10	12¾ x 14¾	1.15
For Prints.	Size Outside.	Price Per Half Dozen.	For Prints.	Size Outside.	Price Per Half Dozen.
J 10 x 12	15¼ x 17¼	\$1.15	L 8 x 14	14¼ x 20¼	.75
K 7 x 12	12 x 17	.75	M 11 x 14	17¼ x 20¼	1.50

SUNDRIES

Cable Release	.25
Bulbs and Tubes, No. 2	.25
Bulbs and Tubes, No. 3	.35
Film Clips, Kodak Jr. No. 1	.12
Film Clips, Kodak Jr. No. 2	.25
Film Clip, Eastman, 3½-inch, per pair	.25
Focus Cloth, Rubber	.65
Ground Glass:	
4 x 5	.25
5 x 7	.30
6½ x 8½	.45
8 x 10	.55
Reversible Backs:	
For View Cameras, 5 x 7	8.00
Ditto, 6½ x 8½	9.00
Ditto, 8 x 10 or 7 x 11	10.00
Premo View Finder	1.50
Screws for Tripod Head:	
Nos. 1, 2 and 3	.20
Nos. 4 and 5	.40

Screws for Tripod Leg:	
Nos. 1, 2 and 3	.15
Nos. 4 and 5	.20
Milled Head Screws for Cameras:	
½ inch and smaller	.15
Larger than ½ inch	.20
Stirring Rod, Hard Rubber	.20
Shoulder Straps, Black:	
½ x 52 inch with Snaps and Buckles	.60
¾ x 52 inch with Snaps and Buckles	.75
½ x 66 inch, with Buckle	.60
¾ x 74 inch, with Buckle	.75
Tan Straps for View Cases with Buckle, Specify style and size of camera when ordering:	
34, 40 and 44 inches	.60
52, 60 and 66 inches	.75
Tubing, per foot	.08

TESTED CHEMICALS

Eastman Chemical Outfit, consists of No. 2 and Special Developer, Intensifier, Reducer and Velox Re-developer	\$.40
Eastman Special Developer Powders, per package, 5 in sealed glass tubes	.25
Eastman Hydrochinon Developer Powders, per dozen	.50
Ditto, per ½ dozen	.25
Ditto, per package 5 powders, in sealed glass tubes	.25
Eastman Pyro Developer Powders, per dozen	.50
Ditto, per ½ dozen	.25
Ditto, per package 5 powders, in sealed glass tubes	.25
Tozol, per 1-ounce bottle	.85
Hydrochinon, per 1-ounce can	.34
Eastman Permanent Crystal Pyro, per 1-ounce bottle	.40
Velox, Re-developer Tubes, package of 12 tubes	.84
Hypo Sulphite of Soda, granular, per pound	.10
Alum, powdered, per pound	.25
Kodak Acid Fixing Powder, per pound package	.25
Ditto, per ½-pound package	.15
Ditto, per ¼-pound package	.10
Eastman Intensifier, glass tube, per tube	.15
Eastman Reducer, per box of 5 tubes	.50
Eastman Opaque No. 1, per tube	.15
Potassium Bromide, per ounce	.20
Acetic Acid, 28 per cent., per 1-pound bottle	.33
Citric Acid, 4-ounce bottle	.43
Eastman Tested Carbonate of Soda (desiccated), per 1-pound bottle	.30
Eastman Tested Sulphite of Soda (desiccated), per 1-pound bottle	.35

These prices subject to change without notice.

BAUSCH & LOMB PROTAR LENS—SERIES V. F. 18

Designed for extreme wide-angle work, this lens embraces a field of 110 degrees.

No.	Size.	Equivalent Focus.	Price.	No.	Size.	Equivalent Focus.	Price.
1	4¼ x 6½	3¾ in.	\$23.50	3	6½ x 8½	5 ⅞ in.	\$29.50
2	5 x 7	4 ⅞ in.	23.50	4	8 x 10	7 ⅞ in.	38.50

SYMMETRICAL WIDE-ANGLE LENS

Has an angle of about 80 degrees and is furnished in cells to interchange with the various lenses supplied on Premo Cameras.

No.	Size.	Equivalent Focus.	Price in Cells Only.	No.	Size.	Equivalent Focus.	Price in Cells Only.
1	4 x 5	3½ in.	\$ 5.00	3	6½ x 8½	6½ in.	\$12.00
2	5 x 7	5 in.	7.50	4	8 x 10	8 in.	15.00

Terms

The prices in this catalogue are strictly net, except to regular dealers who carry our goods in stock. *These prices owing to unsettled conditions are however subject to change without notice.* For the convenience of our customers we recommend that they make their purchases from a dealer in photographic goods, as by so doing they can save both time and transportation charges.

ROCHESTER OPTICAL DEPARTMENT,

EASTMAN KODAK CO.,

ROCHESTER, N. Y.

