



C. H. STAPLES  
THE KODAK MAN  
FRESNO, - CAL.

# GRAFLEX

# GRAFLEX

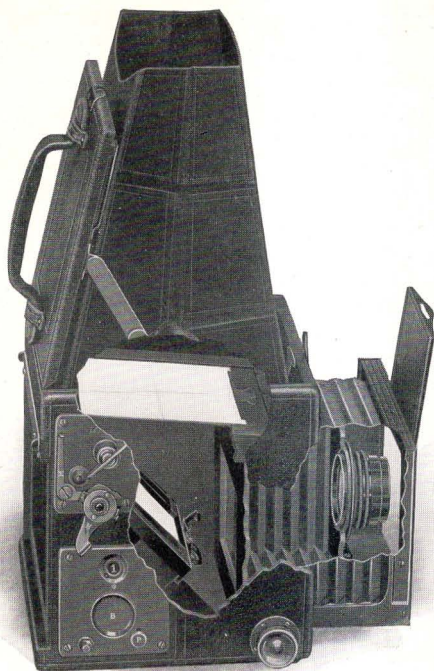
*and*

## Graphic Cameras



EASTMAN KODAK COMPANY  
*Folmer & Schwing Department*  
ROCHESTER, NEW YORK  
1922





**W**HEN you look into the Graflex hood you see on the ground glass a brilliant image of the subject, right side up, full picture size. Reflected there by the tilted mirror below, it shows just what is included in the view. It is easy to compose the picture on the ground glass and to keep the focus critically sharp because the image is in plain sight until the instant that the shutter is released.

---

# THE GRAFLEX

---

THE Graflex is known as the camera that does the difficult things in photography and does them well. But its capacity for extraordinary tasks is supplementary to its wide range of general usefulness—the features that make the Graflex supreme in speed photography make it superior also for the less sensational picture opportunities that occur daily.

The high speed anastigmat lens makes good results less dependent on light conditions—snapshots can even be made indoors when conditions are particularly favorable. The high speed shutter is valuable when photographing vivacious children unsuspected. But always to use the lens wide open and the shutter set for fast exposures is to realize only a part of Graflex capabilities. There are enough combinations of lens apertures and shutter speeds for all phases of hand camera photography except wide angle work.

First among the Graflex features that amateurs and professionals alike find invaluable is the reflecting mirror. This mirror takes the guesswork out of composition and focusing by reflecting the image to a ground glass at the base of the focusing hood, where it is visible, right side up, picture size, until the instant of exposure. The pictorial effect, the lighting, the amount of foreground, sky and background included in the picture, the size of the principal subject on the negative are all seen in advance by looking in the focusing hood. Thus the reflecting mirror makes it easy to get superior pictures.

Precise focusing also is made certain by the Graflex reflecting mirror. Distances are not estimated, nor is a focusing scale used, because as the lens is racked back and forth it is easy to see on the ground glass when the reflected image is sharp.

With the reflecting mirror principle as applied in the Graflex camera it is possible to make successive exposures quickly and yet be sure of keen focus and pleasing composition.

Another characteristic feature of this camera is its shutter. The



Graflex Focal Plane shutter is a long curtain in which are several reinforced rectangular openings, each of different size. During an exposure one of these openings passes across the film, close to the sensitized surface, at a constant velocity, giving absolutely uniform illumination. The duration of the exposure is regulated by the size of curtain aperture chosen and the speed at which the curtain travels. This speed depends on the tension to which the curtain is wound before the exposure. Attached to the camera is a metal plate on which are given the shutter speeds attained by each curtain opening when combined with each curtain tension. The winding, ratchet and release mechanism is accurate and positive.



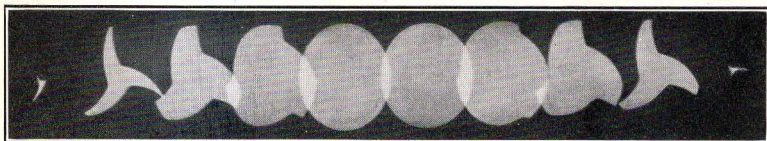
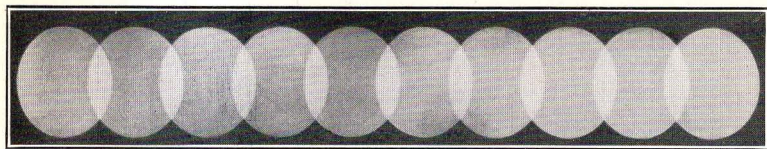
Graflex Shutter  
Curtain

The Graflex Focal Plane shutter provides instantaneous speeds of  $1/10$  to  $1/1,000$  of a second\*—a speed far beyond the demands of ordinary photography but useful in catching birds in flight, racing motor cars, and similar swift action subjects. There is also a slow automatic exposure of about  $1/5$  of a second.

The superiority of the Graflex Focal Plane shutter over a “between-lens” shutter is that the Graflex Focal Plane shutter works at full efficiency throughout the entire exposure period, whereas a “between-lens” shutter gives only partial illumination while it is opening and closing, as shown by the laboratory photographs on page 5. During a given exposure the focal plane shutter passes about one third more light than does the ordinary type of shutter, which means that the Graflex can be operated at a greater shutter speed without danger of under-exposure.

To gain the fullest advantage of so efficient a shutter mechanism the lens must be of superfine quality and of high speed. The Kodak Anastigmat lenses *f.* 4.5 specified for Graflex cameras are designed for the particular cameras with which they are listed, and fitted

\* The Home Portrait Graflex has twenty-four speeds from 1 second to  $1/500$  of a second; the Press Graflex has twenty-six speeds from  $1/10$  to  $1/1,500$  of a second.



From actual photographs made with identical lenses during exposures of  $1/100$  of a second, each flash representing  $1/1,000$  of a second. The upper strip, made with a Graflex Focal Plane shutter, shows uniform illumination, whereas the lower strip indicates that the best between-lens shutter is "wide open" during the fifth and sixth flashes only.

thereto they are unsurpassed by any lenses made anywhere at any price. Equipped with the Kodak Anastigmat *f.* 4.5 the Graflex is a co-ordinate mechanism comprised of matched parts.

Every model of Graflex has great enough bellows capacity to permit of portrait work.

Throughout the manufacture of the Graflex every piece of material used must be worthy of the superior photographic features that are incorporated in this camera. The bodies are made of choice mahogany and covered with the finest Morocco leather. Exposed wood parts are ebonized, and exposed metal parts are of silver-plated brass, richly oxidized to a dull, matte tone. Mechanically, the Graflex is a masterpiece of craftsmanship, just as photographically it is a masterpiece of science.

The whole aim of the Graflex is to combine the reflecting mirror principle, the focal plane shutter and appropriate auxiliary features in a camera that is equal to the severest requirements of professional use, yet so reliable and easy to operate as to be well within the range of any amateur.

# THE 1A GRAFLEX

## *Autographic*

THE 1A Graflex offers the autographic device and roll film convenience in addition to the basic Graflex features—the reflecting mirror and the focal plane shutter. These advantages, compactly combined in a handsomely finished camera, suit the 1A Graflex admirably for everyday amateur use and make it a great favorite with tourists.

With the autographic device, date and title may be written on the film at the time of exposure. This feature is particularly valuable for keeping a permanent record, right on the negative, of children's ages, the names of travel scenes, and similar information.

Pictures made by this camera are  $2\frac{1}{2} \times 4\frac{1}{4}$  inches—a proportion that simplifies good composition. When photographing vertical subjects the camera can be focused in normal position, then turned on its side before the exposure lever is pressed. Kodak Film, in rolls of either 6 or 12 exposures, is used.

Provision is made for instantaneous shutter speeds of  $1/10$  to  $1/1,000$  of a second, a slow "snapshot" of about  $1/5$  of a second, and time exposures of any duration.





A socket is provided so that the camera can be set on a tripod when making horizontal time exposures.

The ground glass on which the reflected image is shown, is slightly smaller than the picture area. This difference is scarcely noticeable, but it makes the camera more compact.

Rounded ends not only save space but add to the looks of the instrument. The 1A Graflex is a handsome camera, easy to carry and easy to use.



1A Graflex in case, showing the Autographic Feature.

### *Details*

Outside dimensions, closed,  $9\frac{1}{2} \times 3 \times 5\frac{1}{4}$  in.; bellows capacity,  $6\frac{1}{2}$  in.; weight,  $3\frac{3}{4}$  lbs.; size of lens board,  $2\frac{1}{4} \times 2\frac{3}{8}$  in.; minimum focus of lenses accommodated,  $4\frac{3}{4}$ -inch. For roll film only. Plate adapters cannot be supplied. Tripod socket in base of camera.

### *The Price*

	$2\frac{1}{2} \times 4\frac{1}{4}$
1A GRAFLEX without lens . . . . .	\$ 84.00
With Kodak Anastigmat Lens <i>f.</i> 4.5, No. 31 . . . . .	121.00
With B. & L. Tessar Lens, Series Ic, <i>f.</i> 4.5, No. 14 . . . . .	126.50
Leather Case for 1A Graflex . . . . .	6.00
Extra lens boards, each . . . . .	.60
Autographic Film Cartridge, 12 exposures (No. A 116) . . . . .	.60
Autographic Film Cartridge, 6 exposures (No. A 116) . . . . .	.30

*The prices of camera and film include the Excise Tax.*

# THE 3A GRAFLEX

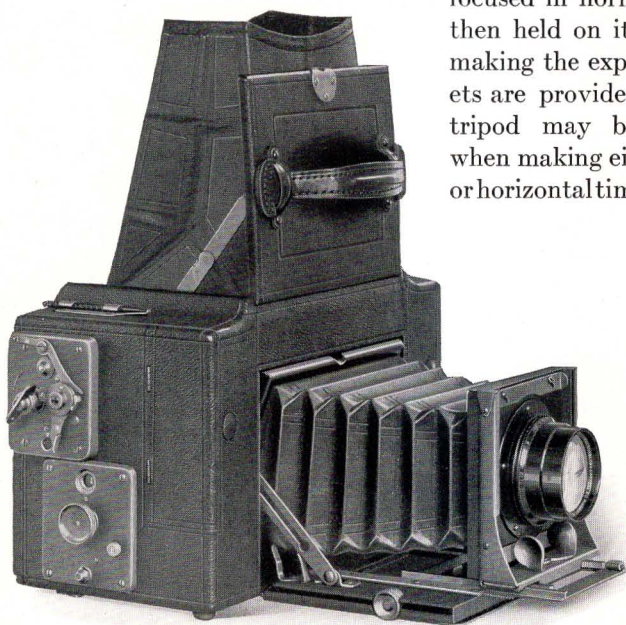
## *Autographic*

**T**HIS camera is autographic, uses roll film and makes pictures of postcard size— $3\frac{1}{4} \times 5\frac{1}{2}$  inches—often called “standard” size.

The autographic inscription—date and title or similar information written on the film at the time—becomes a permanent part of the negative. Such a record is invaluable for identifying the scene, long after the exposure is made.

Amateurs everywhere favor the postcard size picture. It is large enough to show considerable detail in the contact print and its proportions are such that both upright and horizontal subjects fit the image area without waste space. When an upright subject is to

be photographed lengthwise of the film, the camera is focused in normal position, then held on its side when making the exposure. Sockets are provided so that a tripod may be employed when making either vertical or horizontal time exposures.



Kodak Film, in 6- or 10-exposure rolls is used. Four extra rolls can be stored in the ends of the camera, giving it a total capacity of 50 exposures, conveniently carried.

Twenty-four instantaneous speeds, ranging from  $1/10$  to  $1/1,000$  of a second, a slow automatic exposure of about  $1/5$  of a second, and time exposures of any duration are available with the focal plane shutter.

Bellows capacity is 10 inches and the front is rigidly built to accommodate *f.* 4.5 lenses of  $7\frac{1}{2}$ -inch focal length. This fits the 3A Graflex for all-around amateur use.

### *Details*

Dimensions,  $10 \times 5 \times 6\frac{3}{8}$  in.; bellows capacity, 10 in.; weight, 7 lbs.; size of lens board,  $3\frac{1}{4} \times 3\frac{1}{4}$  in.; minimum focus of lenses accommodated,  $6\frac{1}{2}$ -inch. For roll film only. Plate adapters cannot be supplied.

### *The Price*

	$3\frac{1}{4} \times 5\frac{1}{2}$
3A GRAFLEX without lens . . . . .	\$100.00
With Kodak Anastigmat Lens <i>f.</i> 4.5, No. 33 . . . . .	153.00
With B. & L. Tessar Lens, Series Ic, <i>f.</i> 4.5, No. 15a . . . . .	158.50
Leather Case for 3A Graflex . . . . .	8.75
Extra lens boards, each . . . . .	.75
Autographic Film Cartridge, 10 exposures (No. A 122) . . . . .	.90
Autographic Film Cartridge, 6 exposures (No. A 122) . . . . .	.55

*The prices of camera and film include the Excise Tax.*

REFER TO FITTING LENSES, PAGE 48.

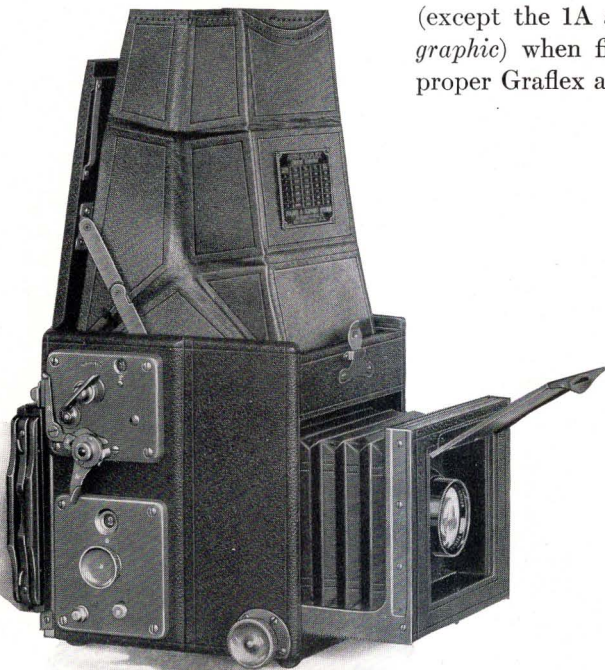


# THE AUTO GRAFLEX

**T**HE Auto Graflex is always ready when a picture opportunity presents itself. The focusing hood unfolds into position at the release of a catch. The lens shield springs open at a slight turn of the focusing knob. The ground glass shows the reflected image, right side up, full picture size.

One cut film holder or one plate holder is optional as regular equipment with this camera but it accommodates also the Graflex Cut Film Magazine, Graflex Roll Holder, Graflex Film Pack

Adapter and Graflex Magazine Plate Holder. Cut film, film packs, roll film or plates can be used in any Graflex camera (except the 1A and 3A *Auto-graphic*) when fitted with the proper Graflex accessories.



Twenty-four instantaneous speeds, from  $1/10$  to  $1/1,000$  of a second, a slow automatic exposure of about  $1/5$  of a second, as well as time exposures, are available with the focal plane shutter.

The Auto Graflex is made in three sizes— $3\frac{1}{4} \times 4\frac{1}{4}$ ,  $4 \times 5$  and  $5 \times 7$ . Any of them is well suited for a wide range of use, especially when fitted with the lenses that are recommended for it. The  $5 \times 7$  model differs slightly from the other two in that the front as well as the lens shield is hinged, giving easy access to the lens, and the top forward edge of the camera body is curved, to save space and weight.

### Details

	$3\frac{1}{4} \times 4\frac{1}{4}$	$4 \times 5$	$5 \times 7$
Dimensions when closed	$5\frac{3}{4} \times 5\frac{3}{8} \times 6\frac{1}{4}$	$6\frac{3}{4} \times 6\frac{1}{4} \times 7\frac{1}{4}$	$9\frac{1}{4} \times 8\frac{1}{4} \times 8\frac{3}{4}$
Bellows capacity	7 in.	$8\frac{1}{2}$ in.	12 in.
Weight	3 lbs. 10 oz.	5 lbs.	8 lbs.
Size of lens board	$2\frac{7}{8} \times 2\frac{7}{8}$ in.	$3\frac{1}{4} \times 3\frac{1}{4}$ in.	$4 \times 4$ in.
Minimum focus of lenses accommodated	5 in.	6 in.	$7\frac{1}{2}$ in.

### The Price

	$3\frac{1}{4} \times 4\frac{1}{4}$	$4 \times 5$	$5 \times 7$
AUTO GRAFLEX without lens, including one plate holder or one cut film holder	\$ 64.00	\$ 72.00	\$104.00
With Kodak Anastigmat Lens, f. 4.5 No. 31	101.00	No. 32 115.00	No. 34 170.00
With B. & L. Tessar, Ser. Ic, f. 4.5 No. 14	106.50	No. 15 120.00	No. 16 176.50
Graflex Roll Holder No. 51	10.25	No. 53 11.25	No. 54 14.00
Graflex Cut Film Holder	2.50	2.50	3.50
Graflex Cut Film Magazine	14.00	15.25	17.00
Graflex Magazine Plate Holder	14.00	15.25	17.00
Graflex Film Pack Adapter	4.75	5.50	7.50
Graflex Plate Holder	2.50	2.50	3.50
Leather case for camera and roll holder or cut film magazine	7.75	8.75	14.50
Leather case for camera and magazine plate holder	8.25	10.25	15.25
Extra lens boards, each	.75	.75	.90
Ground glass focusing panel, to interchange with holder	3.50	4.25	5.75
Kodak Cut Film, doz.	.67	.93	1.50
Kodak Film Packs No. 518	.90	No. 523 1.10	No. 515 1.90
Eastman Graflex Roll Film, 6 exp. No. 51	.45	No. 53 .55	No. 54 .95

*The prices of camera and film include the Excise Tax.*

REFER TO FITTING LENSES, PAGE 48.

# AUTO GRAFLEX JUNIOR

**T**HE Auto Graflex Junior is distinguished by its smallness. It weighs less than two-and-a-half pounds, and when closed its greatest dimension is five inches. Yet it has all the characteristic features on which Graflex superiority is founded.

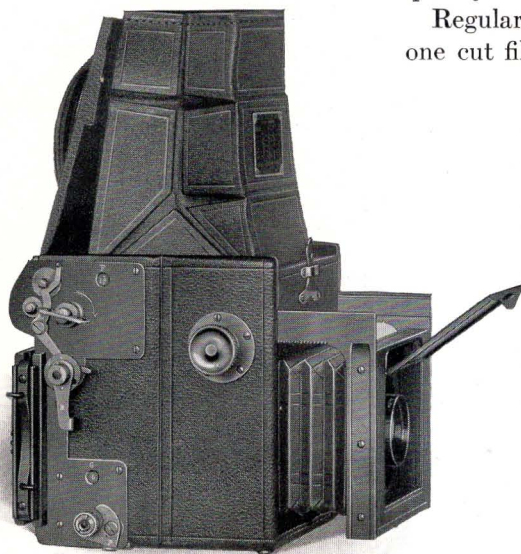
Despite its small compass this camera makes pictures  $2\frac{1}{4} \times 3\frac{1}{4}$  inches, which is sufficiently large for all ordinary purposes. When bigger prints are desired excellent enlargements are obtainable, especially from negatives made with the lenses listed.

The reflecting mirror is present to facilitate precise focusing and artistic composition. The focal plane shutter offers speeds of  $1/10$  to  $1/1,000$  of a second—twenty-four in all—as well as time exposures and a slow automatic exposure of about  $1/5$  of a second.

Lenses of  $4\frac{1}{2}$ -inch focal length give ample depth of definition for a wide variety of work with large apertures. Negatives made by the f. 4.5 anastigmat lenses recommended are so sharp and crisp that

Graflex prints have a distinctive quality which is unmistakable.

Regular equipment includes one cut film holder or one plate





holder, but there are also Graflex attachments with which to fit this camera for roll film and film packs.

The Auto Graflex Junior has the same "quick action" features as the Auto Graflex. The lens shield springs up when the focusing knob is turned, the hood rises into position when the top of the camera is opened—and the reflected image is shown instantly on the ground glass.

A capable camera, convenient to carry.

### *Details*

Dimensions closed,  $5 \times 4\frac{3}{8} \times 5$  in.; bellows capacity,  $5\frac{1}{2}$  in.; weight, 39 oz.; minimum focus of lenses accommodated, 4-inch.

### *The Price*

AUTO GRAFLEX JUNIOR without lens, including one plate holder or one cut film holder	2¼ x 3¼ \$ 52.00
With Kodak Anastigmat Lens <i>f.</i> 4.5, No. 30	85.00
With B. & L. Tessar Lens, Series Ic, <i>f.</i> 4.5, No. 13.	89.00
Graflex Roll Holder, No. 50	9.75
Graflex Cut Film Holder	1.75
Graflex Cut Film Magazine	12.00
Graflex Magazine Plate Holder	12.00
Graflex Film Pack Adapter	4.50
Graflex Plate Holder	1.75
Ground glass focusing panel, to interchange with holder	3.25
Leather case for camera and roll holder or cut film magazine	6.25
Leather case for camera and magazine plate holder	7.00
Kodak Cut Film, doz.	.46
Kodak Film Pack, No. 520	.50
Eastman Graflex Roll Film, No. 50, 6 exposures	.25

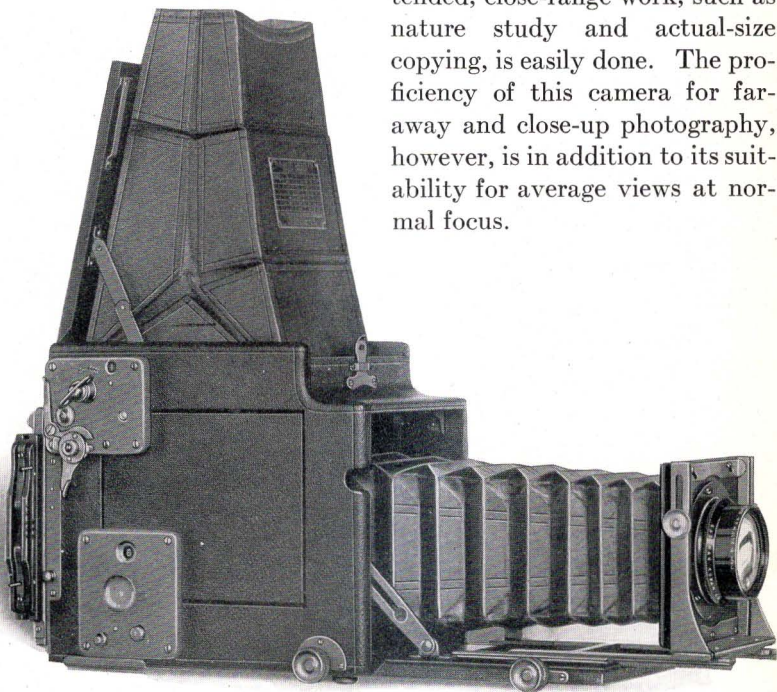
*The prices of camera and film include the Excise Tax.*

## REVOLVING BACK AUTO GRAFLEX

**T**HIS camera is characterized by two valuable advantages—its revolving back and its unusual bellows capacity.

To photograph a vertical subject lengthwise of the film, the back of the camera is quickly turned without removing the film holder. This feature, combined with the reflecting mirror, makes it easy to use the entire image area advantageously and facilitates good composition, no matter what proportions the subject may have.

The long bellows capacity of this camera permits the use of long focus lenses and the single elements of convertible lenses, which give large images at great distances. With the bellows extended, close-range work, such as nature study and actual-size copying, is easily done. The proficiency of this camera for far-away and close-up photography, however, is in addition to its suitability for average views at normal focus.



By removing the film holder or plate holder and inserting the ground glass focusing panel, one can measure the image or examine it for microscopic sharpness with a magnifying glass.

Twenty-four instantaneous speeds of 1/10 to 1/1,000 of a second, a slow automatic exposure of about 1/5 of a second, and time exposures of any length can be made.

A cut film holder or a plate holder is regular equipment but Graflex Cut Film Magazine, Graflex Roll Holder, Graflex Film Pack Adapter and Graflex Magazine Plate Holder also can be fitted.



The Graflex Revolving Back works smoothly and is positively light-tight.

### Details

	3¼ x 4¼	4 x 5
Dimensions when closed . . . . .	8½ x 5½ x 7	10 x 6¼ x 8
Bellows capacity . . . . .	15½ in.	18½ in.
Weight . . . . .	5¾ lbs.	7½ lbs.
Size of lens board . . . . .	3¼ x 3¼ in.	3¾ x 3¾ in.
Minimum focus of lenses accommodated . . . . .	7⅛ in.	8⅝ in.

### The Price

	3¼ x 4¼	4 x 5
REVOLVING BACK AUTO GRAFLEX, without lens, including focusing panel and one plate holder or one cut film holder . . . . .	\$108.00	\$124.00
With Kodak Anastigmat Lens f. 4.5 . . . . .	No. 33 161.00	No. 34 190.00
		No. 35 239.00
With B. & L. Tessar Lens, Series Ic, f. 4.5 . . . . .	No. 15a 166.50	No. 17 241.00
With B. & L. Protar Lens, Series VIIa, f. 6.3 . . . . .	No. 10 195.50	No. 13 237.00
Graflex Roll Holder . . . . .	No. 51 10.25	No. 53 11.25
Graflex Cut Film Holder . . . . .	2.50	2.50
Graflex Cut Film Magazine . . . . .	14.00	15.25
Graflex Magazine Plate Holder . . . . .	14.00	15.25
Graflex Film Pack Adapter . . . . .	4.75	5.50
Graflex Plate Holder . . . . .	2.50	2.50
Leather case for camera and roll holder or cut film magazine . . . . .	10.00	12.25
Leather case for camera and magazine plate holder . . . . .	10.75	13.75
Extra lens boards, each . . . . .	.75	.90
Kodak Cut Film, doz. . . . .	.67	.93
Kodak Film Packs . . . . .	No. 518 .90	No. 523 1.10
Eastman Graflex Roll Film, 6 exposures . . . . .	No. 51 .45	No. 53 .55

The prices of camera and film include the Excise Tax.



## REVOLVING BACK

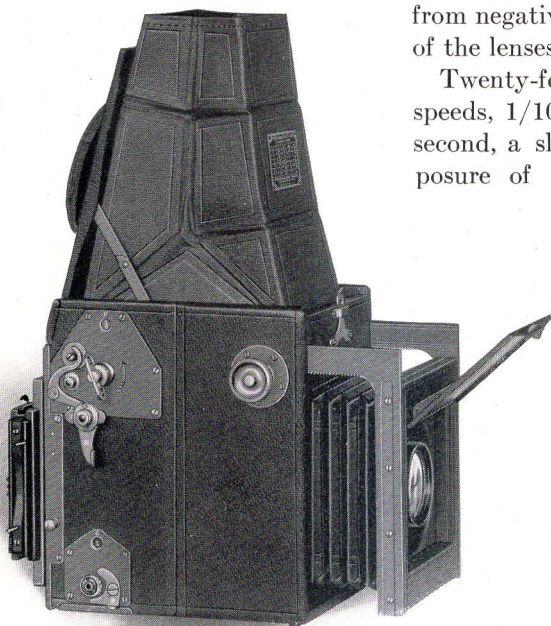
# GRAFLEX JUNIOR

**T**HIS camera has the same quick-action features as the Auto Graflex Junior and is almost as small. And it has the added advantage of the revolving back, which equips it to photograph vertical subjects the long way of the film without turning the camera on its side.

The bellows capacity is ample for use at close proximity and the lenses listed for this camera have a focal length of  $6\frac{1}{2}$  inches, making it possible to get a good sized image at longer range.

Pictures made by the Revolving Back Graflex Junior are  $2\frac{1}{4} \times 3\frac{1}{4}$  inches, a popular and practical size. When prints of greater dimensions are desired, excellent enlargements are obtainable from negatives made by either of the lenses recommended.

Twenty-four instantaneous speeds,  $1/10$  to  $1/1,000$  of a second, a slow automatic exposure of about  $1/5$  of a



second, and time exposures of any length are provided for by the focal plane shutter.

Like all Graflex cameras, (except the 1A and 3A *Autographic*) the Revolving Back Graflex Junior uses cut film, film packs, roll film and plates. It comes equipped with a cut film holder or a plate holder but the Graflex Cut Film Magazine, Graflex Film Pack Adapter, Graflex Roll Holder or Graflex Magazine Plate Holder can be attached.

### *Details*

Dimensions when closed, 6 x 4½ x 6¼ in.; bellows capacity, 7¼ in.; weight, 3¼ lbs.; minimum focus of lens accommodated 5¼-inch.

### *The Price*

REVOLVING BACK GRAFLEX JUNIOR, without lens, including one	2¼ x 3¼
plate holder or one cut film holder . . . . .	\$ 68.00
With Kodak Anastigmat Lens f. 4.5, No. 32 . . . . .	111.00
With B. & L. Tessar Lens, Series Ic, f. 4.5, No. 15 . . . . .	116.00
Graflex Roll Holder, No. 50 . . . . .	9.75
Graflex Cut Film Holder . . . . .	1.75
Graflex Cut Film Magazine . . . . .	12.00
Graflex Magazine Plate Holder . . . . .	12.00
Graflex Film Pack Adapter . . . . .	4.50
Graflex Plate Holder . . . . .	1.75
Ground glass focusing panel, to interchange with holder . . . . .	3.25
Leather case for camera and roll holder or cut film magazine . . . . .	7.25
Leather case for camera and magazine plate holder . . . . .	8.25
Kodak Cut Film, doz. . . . .	.46
Kodak Film Pack, No. 520 . . . . .	.50
Eastman Graflex Roll Film, No. 50, 6 exposures . . . . .	.25

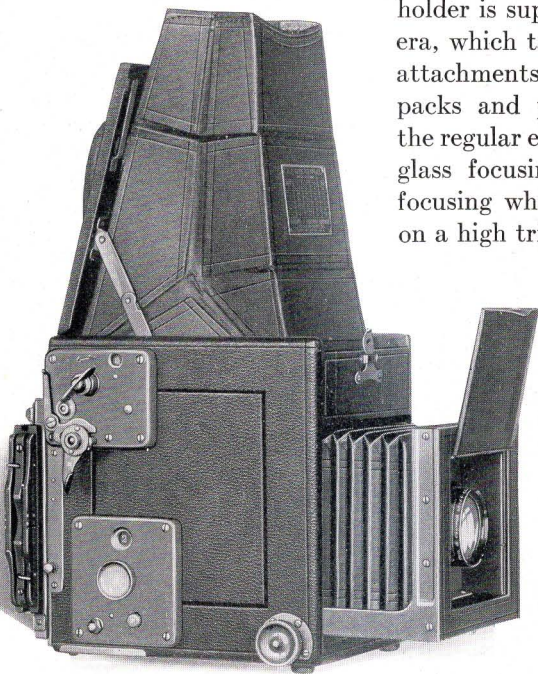
*The prices of camera and film include the Excise Tax.*

## REVOLVING BACK TELESCOPIC GRAFLEX

**T**HE Revolving Back Telescopic Graflex is designed to meet the demand for a revolving back camera that has the reflecting mirror and focal plane shutter and whose capabilities successfully meet the difficult as well as the average photographic situation. Made in two sizes, for  $3\frac{1}{4} \times 4\frac{1}{4}$  and  $4 \times 5$  pictures.

It is smaller and lighter than are other revolving back cameras of the reflecting type that make negatives of the same area. The lenses recommended are of sufficient focal length to produce a sizable image and still give good depth of focus. The bellows capacity is ample for working as close to the subject as is usually desirable.

One cut film holder or one plate holder is supplied with this camera, which takes also the Graflex attachments for roll film, film packs and plates. Included in the regular equipment is a ground glass focusing panel, useful for focusing when the camera is set on a high tripod.





The release of a catch near the handle opens the top and extends the focusing hood; the lens shield rises automatically when the front is racked out.

High speed lenses and a variety of shutter adjustments, up to 1/1,000 of a second, fit the Revolving Back Telescopic Graflex for swift-action photography. And it is equally suitable for the less exciting picture opportunities that the amateur meets with daily.

### Details

	3¼ x 4¼	4 x 5
Dimensions when closed . . . . .	6¾ x 5½ x 6⅞	8¾ x 6¾ x 7⅞
Bellows capacity . . . . .	8½ in.	12 in.
Weight . . . . .	4½ lbs.	6¾ lbs.
Size of lens board . . . . .	3¼ x 3¼ in.	3¾ x 3¾ in.
Minimum focus of lenses accommodated . . . . .	5¾ in.	7⅞ in.

### The Price

	3¼ x 4¼	4 x 5
REVOLVING BACK TELESCOPIC GRAFLEX without lens, including focusing panel and one plate holder or cut film holder . . . . .	\$ 96.00	\$108.00
With Kodak Anastigmat Lens <i>f.</i> 4.5 . . . . .	No. 32 139.00	No. 33 161.00
With B. & L. Tessar Lens, Series Ic, <i>f.</i> 4.5 . . . . .	No. 15 144.00	No. 16 180.50
Graflex Roll Holder . . . . .	No. 51 10.25	No. 53 11.25
Graflex Cut Film Holder . . . . .	2.50	2.50
Graflex Cut Film Magazine . . . . .	14.00	15.25
Graflex Magazine Plate Holder . . . . .	14.00	15.25
Graflex Film Pack Adapter . . . . .	4.75	5.50
Graflex Plate Holder . . . . .	2.50	2.50
Leather case for camera and roll holder or cut film magazine . . . . .	8.25	10.75
Leather case for camera and magazine plate holder . . . . .	9.50	11.50
Extra lens boards, each . . . . .	.75	.90
Kodak Cut Film, doz. . . . .	.67	.93
Kodak Film Packs . . . . .	No. 518 .90	No. 523 1.10
Eastman Graflex Roll Film, 6 exposures . . . . .	No. 51 .45	No. 53 .55

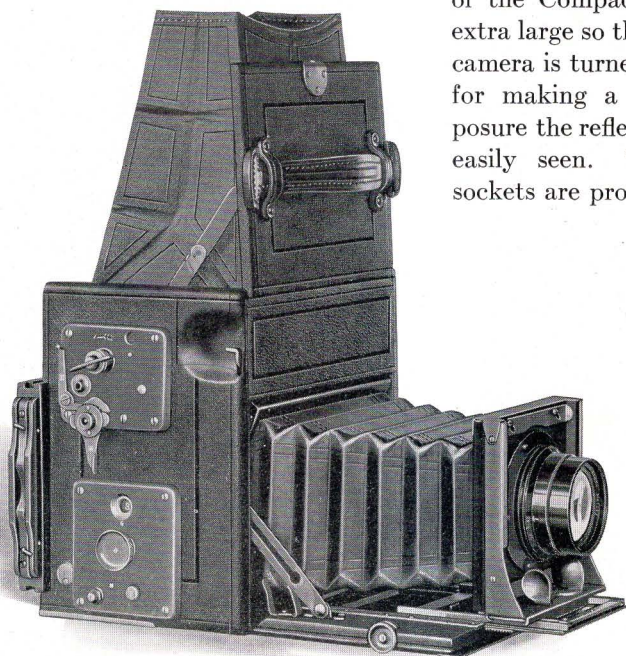
*The prices of camera and film include the Excise Tax.*

# THE COMPACT GRAFLEX

**T**HE Compact Graflex is made in two sizes— $3\frac{1}{4} \times 5\frac{1}{2}$  and  $5 \times 7$ . Each combines in small space all the basic Graflex features—the reflecting mirror, the focal plane shutter, the optional use of cut film, film packs, roll film or plates.

This camera is well qualified for a wide variety of usefulness. The anastigmat lenses *f.* 4.5 make excellent negatives, even under imperfect light conditions. And the focal plane shutter offers a choice of twenty-four instantaneous speeds,  $1/10$  to  $1/1,000$  of a second, as well as adjustments for time exposures and a slow automatic exposure of about  $1/5$  of a second, useful for indoor work.

The postcard size picture owes much of its popularity to the fact that whether the subject is vertical or horizontal the image usually fits the oblong area without waste space. The focusing hood of the Compact Graflex is extra large so that when the camera is turned on its side for making a vertical exposure the reflected image is easily seen. Two tripod sockets are provided.



Regular equipment includes one cut film holder or one plate holder, but the Graflex Cut Film Magazine, Graflex Film Pack Adapter, Graflex Roll Holder or Graflex Magazine Plate Holder can be fitted, as can also a ground glass focusing panel.

Lenses of  $7\frac{1}{2}$ - and  $8\frac{1}{2}$ -inch focal length are recommended for the  $3\frac{1}{4} \times 5\frac{1}{2}$  and  $5 \times 7$  models respectively.

### *Details*

	$3\frac{1}{4} \times 5\frac{1}{2}$	$5 \times 7$
Dimensions when closed . . . . .	$7 \times 4\frac{7}{8} \times 7$	$9\frac{1}{2} \times 7 \times 9\frac{1}{2}$
Bellows capacity . . . . .	10 in.	$12\frac{1}{2}$ in.
Weight . . . . .	$5\frac{1}{2}$ lbs.	$8\frac{1}{2}$ lbs.
Size of lens board . . . . .	$3\frac{1}{4} \times 3\frac{1}{4}$ in.	$4 \times 4$ in.
Minimum focus of lenses accommodated . . . . .	$6\frac{1}{2}$ in.	$8\frac{1}{2}$ in.

### *The Price*

	$3\frac{1}{4} \times 5\frac{1}{2}$	$5 \times 7$
COMPACT GRAFLEX without lens, including one plate holder or one cut film holder . . . . .	\$ 92.00	\$128.00
With Kodak Anastigmat Lens <i>f.</i> 4.5 . . . . . No. 33	145.00	No. 34 194.00
With B. & L. Tessar Lens, Series Ic, <i>f.</i> 4.5 . . . . . No. 15a	150.50	No. 16 200.50
Graflex Roll Holder . . . . . No. 52	11.25	No. 54 14.00
Graflex Cut Film Holder . . . . .	2.50	3.50
Graflex Cut Film Magazine . . . . .	15.25	17.00
Graflex Magazine Plate Holder . . . . .	15.25	17.00
Graflex Film Pack Adapter . . . . .	5.50	7.50
Graflex Plate Holder . . . . .	2.50	3.50
Ground glass focusing panel, to interchange with holder . . . . .	4.25	5.75
Leather Case for camera and roll holder or cut film magazine . . . . .	8.25	13.50
Leather Case for camera and magazine plate holder . . . . .	9.75	15.00
Extra lens boards, each . . . . .	.75	.90
Kodak Cut Film, doz. . . . .	.93	1.50
Kodak Film Packs . . . . . No. 522	1.10	No. 515 1.90
Eastman Graflex Roll Film, 6 exposures . . . . . No. 52	.55	No. 54 .95

*The prices of camera and film include the Excise Tax.*

REFER TO FITTING LENSES, PAGE 48.



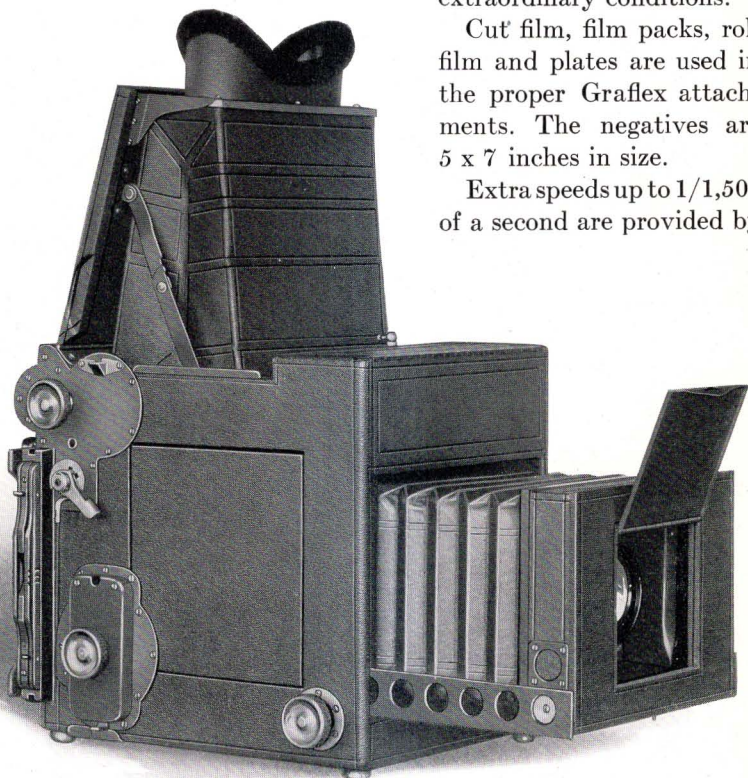
# THE PRESS GRAFLEX

**T**HE varied nature of newspaper and commercial photography demands a camera that has a shutter speed fast enough to stop the swiftest motion, a picture large enough to show the view in detail, sufficient bellows capacity for work at close range, lenses whose focal length will permit of good sized images without sacrificing depth of focus. Reliability is of paramount importance.

The Press Graflex satisfies all these exacting requirements. It is a quick-action camera, built to stand rough usage under extraordinary conditions.

Cut film, film packs, roll film and plates are used in the proper Graflex attachments. The negatives are 5 x 7 inches in size.

Extra speeds up to 1/1,500 of a second are provided by



this camera's special focal plane shutter. The numbers that indicate the curtain aperture and the shutter tension are visible from the top—one of the quick-action features so valuable to press photographers. When a latch near the handle is released the large, light-tight focusing hood extends into position. At a slight turn of the focusing knob the lens shield rises, uncovering the lens, ready for action.

When the camera is on a tripod in an elevated position it can be focused from the rear by means of a ground glass panel. This panel remains in place while the film holder, plate holder or film pack adapter is in use, but is removed when the roll holder, cut film magazine or magazine plate holder is attached.

### *Details*

Dimensions, 11 x 8¼ x 9¾ in.; bellows capacity, 14 in.; weight, 11½ lbs.; lens board, 4 x 4 in.; minimum focus of lenses accommodated, 8 in.

### *The Price*

	5 x 7
PRESS GRAFLEX without lens, including one plate holder or cut film holder . . . . .	\$172.00
With Kodak Anastigmat Lens <i>f.</i> 4.5, No. 34 . . . . .	238.00
With B. & L. Tessar Lens, Series Ic, <i>f.</i> 4.5, No. 16 . . . . .	244.50
Graflex Roll Holder, No. 54 . . . . .	14.00
Graflex Cut Film Holder . . . . .	3.50
Graflex Cut Film Magazine . . . . .	17.00
Graflex Magazine Plate Holder . . . . .	17.00
Graflex Film Pack Adapter . . . . .	7.50
Graflex Plate Holder . . . . .	3.50
Leather case, for camera and roll holder or cut film magazine, with lock and key . . . . .	18.00
Leather case, for camera and magazine plate holder, with lock and key . . . . .	19.00
Extra lens boards, each . . . . .	.90
Kodak Cut Film, doz. . . . .	1.50
Kodak Film Pack, No. 515 . . . . .	1.90
Eastman Graflex Roll Film, No. 54, 6 exposures . . . . .	.95

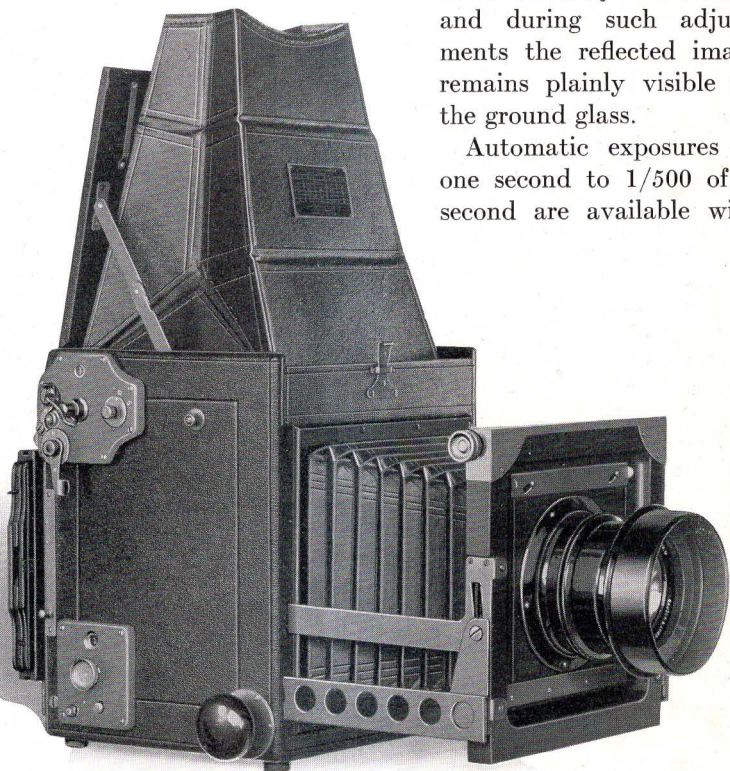
*The prices of camera and film include the Excise Tax.*

# HOME PORTRAIT GRAFLEX

**T**HE Home Portrait Graflex is designed to make fully-timed 5 x 7 negatives with short exposures indoors, on the veranda and in other places where the light control is not ideal. It is primarily intended for portrait-making but it is well suited for a variety of other uses also, where a shutter speed of 1/500 of a second is sufficiently fast.

A revolving back and a swinging front—essential features for portrait work—are found on this camera. The lens can be raised, lowered or tilted quickly to correct the perspective, so often faulty when the subject is seated, and during such adjustments the reflected image remains plainly visible on the ground glass.

Automatic exposures of one second to 1/500 of a second are available with





the Home Portrait Graflex focal plane shutter. Another feature of this shutter is that the curtain may be adjusted to travel its full length, using several or all of the apertures when it is desired to allow more light to reach the film than if only the wide-open aperture were utilized.

When the camera is on a high tripod it can be focused from the rear by using the focusing panel, which fits the revolving back.

The Graflex Cut Film Holder, Graflex Film Pack Adapter, Graflex Roll Holder, Graflex Cut Film Magazine, Graflex Plate Holder and Graflex Magazine Plate Holder can be attached to the Home Portrait Graflex.

### *Details*

Dimensions,  $9\frac{3}{4} \times 9 \times 10\frac{1}{2}$  in.; focal capacity, 15 in.; weight,  $11\frac{1}{2}$  lbs.; size of lens board,  $5 \times 5$  in.; minimum focus of lenses accommodated, 10-inch.

### *The Price*

	5 x 7
HOME PORTRAIT GRAFLEX without lens, including focusing panel and one plate holder or one cut film holder . . . . .	\$184.00
With Kodak Anastigmat Lens f. 4.5, No. 36 . . . . .	344.00
With B. & L. Tessar Lens, Series Ic, f. 4.5, No. 18 . . . . .	344.00
Graflex Roll Holder, No. 54 . . . . .	14.00
Graflex Cut Film Holder . . . . .	3.50
Graflex Cut Film Magazine . . . . .	17.00
Graflex Magazine Plate Holder . . . . .	17.00
Graflex Film Pack Adapter . . . . .	7.50
Graflex Plate Holder . . . . .	3.50
Leather case, for camera and roll holder or cut film magazine, with lock and key . . . . .	18.75
Leather case, for camera and magazine plate holder, with lock and key . . . . .	21.00
Extra lens boards, each . . . . .	1.10
Kodak Cut Film, doz. . . . .	1.50
Kodak Film Pack, No. 515 . . . . .	1.90
Eastman Graflex Roll Film, No. 54, 6 exposures . . . . .	.95

*The prices of camera and film include the Excise Tax.*

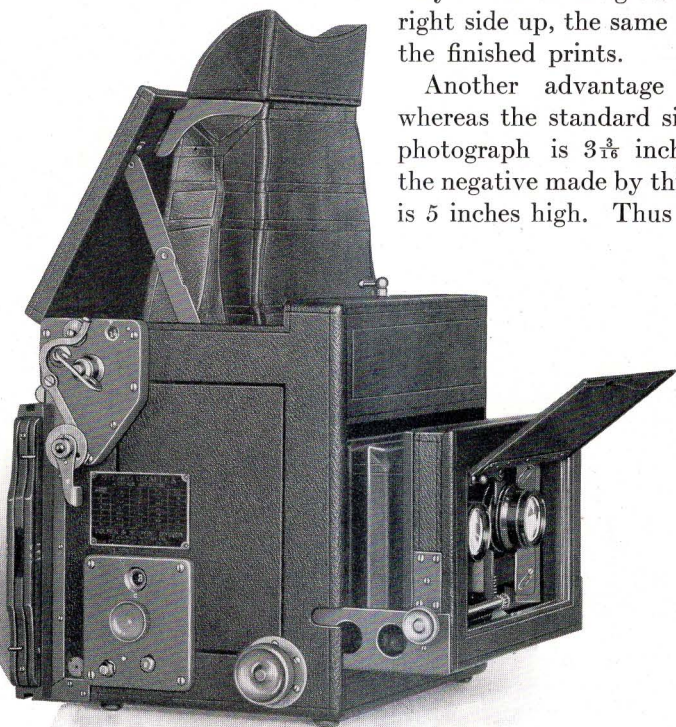
REFER TO FITTING LENSES, PAGE 48.

# THE STEREO AUTO GRAFLEX

THE principle of stereoscopic photography is that two pictures taken simultaneously by twin lenses produce a realistic effect of depth, breadth and relief when looked at through a stereoscope. A stereoscopic view shows the subject as it is actually seen by the eyes. This principle finds its most perfect embodiment in the Stereo Auto Graflex.

The reflecting mirror and the focal plane shutter are not the only features wherein this camera differs from other types of stereoscopic cameras. The top of the focusing hood contains a pair of prisms which give a stereoscopic effect, so that when focusing, one image only is seen on the ground glass—right side up, the same size as in the finished prints.

Another advantage is that whereas the standard size stereo photograph is  $3\frac{3}{16}$  inches high, the negative made by this camera is 5 inches high. Thus by trim-



ming, the amount of foreground and sky is controlled and the best part of the image utilized.

A stationary partition prevents overlapping of images on the film and also permits the use of the camera for making single exposures on half the 5 x 7 film area by capping one lens.

The lenses, carefully matched, are perfectly aligned with their centers  $3\frac{1}{2}$  inches apart. A rising front allows adjustment of the foreground until the best effect is seen in the reflected image.

Speeds up to 1/1,000 of a second are provided by the focal plane shutter.

### *Details*

Dimensions when closed,  $8\frac{1}{4}$  x 9 x  $8\frac{3}{4}$  in.; bellows capacity, 8 in.; weight, 8 lbs.; size of lens board, 3 x  $5\frac{3}{4}$  in.; minimum focus of lenses accommodated,  $6\frac{1}{4}$  inch.

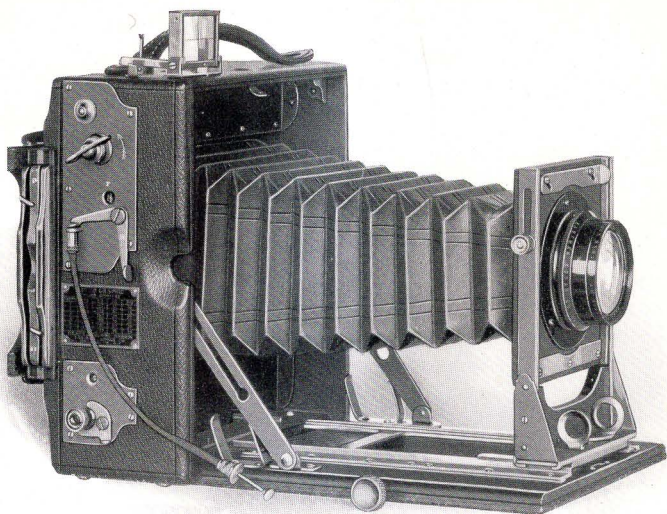
### *The Price*

STEREO AUTO GRAFLEX without lenses, including focusing panel and one plate holder or cut film holder . . . . .	\$200.00
With matched pair B. & L. Kodak Anastigmat Lenses f. 6.3, No. 3 . . . . .	252.00
Graflex Roll Holder, No. 54 . . . . .	14.00
Graflex Cut Film Holder . . . . .	3.50
Graflex Cut Film Magazine . . . . .	17.00
Graflex Magazine Plate Holder . . . . .	17.00
Graflex Film Pack Adapter . . . . .	7.50
Graflex Plate Holder . . . . .	3.50
Leather case, for camera and roll holder or cut film magazine, with lock and key . . . . .	13.75
Leather case, for camera and magazine plate holder, with lock and key . . . . .	15.00
Extra lens boards, each . . . . .	2.75
Kodak Cut Film, 5 x 7, doz. . . . .	1.50
Kodak Film Pack, 5 x 7, No. 515 . . . . .	1.90
Eastman Graflex Roll Film, No. 54, 6 exposures . . . . .	.95

*The prices of camera and film include the Excise Tax.*

REFER TO FITTING LENSES, PAGE 48.





## THE SPEED GRAPHIC

**T**HE Speed Graphic offers the advantage of focal plane shutter efficiency in a compact, folding camera. It is made in four sizes— $3\frac{1}{4} \times 4\frac{1}{4}$ ,  $3\frac{1}{4} \times 5\frac{1}{2}$ ,  $4 \times 5$ , and  $5 \times 7$ . The shutter provides speeds of  $1/10$  to  $1/1,000$  of a second, except on the  $3\frac{1}{4} \times 4\frac{1}{4}$  size, where the maximum speed is  $1/500$  of a second, fast enough for the short focus lenses fitted to this model.

The lens front is rigid, and large enough to accommodate high speed anastigmat lenses. The rising front can be adjusted quickly for photographing buildings and to reduce the foreground.

Two tripod sockets are provided so that the camera can be used for time exposures in either vertical or horizontal position. The shutter is controlled by a cable release. The body is made of kiln dried mahogany, covered with fine Morocco leather. Exposed wood parts are ebonized and exposed metal parts are of brass, silver plated, then oxidized to a rich, matte finish.

The Speed Graphic is regularly fitted with one cut film holder or one plate holder, but a Film Pack Adapter also can be used.

## Details

	$3\frac{1}{4} \times 4\frac{1}{4}$	$4 \times 5$	$3\frac{1}{4} \times 5\frac{1}{2}$	$5 \times 7$
Dimensions . . .	$5\frac{3}{4} \times 2\frac{3}{4} \times 6\frac{1}{4}$	$6\frac{1}{2} \times 4 \times 6\frac{3}{8}$	$7 \times 3\frac{1}{8} \times 7\frac{1}{2}$	$8\frac{3}{4} \times 3\frac{3}{4} \times 9\frac{3}{8}$
Bellows capacity	10 in.	12 in.	12 in.	16 in.
Weight . . .	2½ lbs.	3½ lbs.	3¾ lbs.	5½ lbs.
Size of lens board	$2\frac{1}{2} \times 2\frac{1}{2}$ in.	$3\frac{1}{4} \times 3\frac{1}{4}$ in.	$3\frac{1}{4} \times 3\frac{1}{4}$ in.	$3\frac{3}{4} \times 3\frac{3}{4}$ in.

## The Price

*Including one cut film holder or plate holder*

	$3\frac{1}{4} \times 4\frac{1}{4}$	$4 \times 5$	$3\frac{1}{4} \times 5\frac{1}{2}$	$5 \times 7$
SPEED GRAPHIC without lens	\$ 64.00	\$ 72.00	\$ 72.00	\$ 88.00
With Kodak Anastigmat Lens f. 4.5	No.31 101.00	No.32 115.00	No.33 125.00	No.34 154.00
With B. & L. Tessar Lens, Series Ic, f. 4.5	No.14 106.50	No.15 120.00	No.15a 130.50	No.16 160.50
*Sole leather carrying case, with lock and key . . .	8.50	9.00	9 00	11.50
Extra lens boards, each . . .	.60	.75	.75	.90
Graphic Plate Holder . . .	2.00	2.00	2.00	
Eastman Plate Holder . . .				1.75
Graphic Cut Film Holder . . .	2.00	2.00	2.00	
Eastman Portrait Film Holder				1.75
Kodak Cut Film, doz. . . .	.67	.93	.93	1.50
Film Pack Adapter . . . .	1.50	1.75	1.75	2.50
Kodak Film Packs . . . .	No. 518 .90	No. 523 1.10	No. 522 1.10	No. 515 1.90

\* Carrying cases for Speed Graphic Cameras hold the camera and holders as follows:

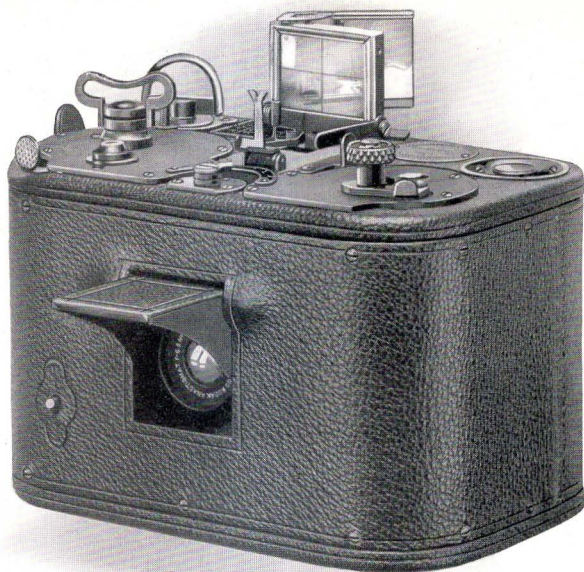
$3\frac{1}{4} \times 4\frac{1}{4}$ , 5 holders;  $4 \times 5$ , 6 holders;  $3\frac{1}{4} \times 5\frac{1}{2}$ , 5 holders;  $5 \times 7$ , 6 holders.

*The prices of camera and film include the Excise Tax.*

## GRAFLEX BACKS FOR SPEED GRAPHIC CAMERAS

TO permit the use of a greater variety of attachments, the backs of Speed Graphic cameras can be altered to take the Graflex Roll Holder (so that Eastman Graflex Roll Film can be used), Graflex Cut Film Magazine, Graflex Cut Film Holder, Graflex Plate Holder, Graflex Film Pack Adapter and Graflex Magazine Plate Holder. The prices include ground glass focusing panel but no plate holder or film holder.

$3\frac{1}{4} \times 4\frac{1}{4}$	$4 \times 5$	$3\frac{1}{4} \times 5\frac{1}{2}$	$5 \times 7$
\$13.50	\$13.50	\$13.50	\$14.50



## No. 0 GRAPHIC

**T**HE No. 0 Graphic is a little gem among cameras—it has the Graflex Focal Plane shutter and the Kodak Anastigmat lens *f.* 6.3. The finest materials are used in its construction, it is luxuriously finished, and uses Kodak roll film.

This camera is exceedingly simple to use. With the lens fully open everything twelve feet distant and beyond is in focus; at smaller openings objects much nearer are in focus.

When making an exposure the camera is held at eye level and the picture composed in the direct sight finder. This feature is particularly valuable when making action pictures—the movement of the subject may be followed more closely than in any other type of reduced-image finder. A unique feature of the No. 0 Graphic finder is that it is not only collapsible but that with it pictures may be taken at right angles to the direction which the user of the camera faces.



Negatives made by the Kodak Anastigmat lens *f.* 6.3 are keen, crisp and of good depth so that brilliant enlargements up to 8 x 10 may be made. Contact prints are of the popular "vest pocket" size— $1\frac{5}{8}$  x  $2\frac{1}{2}$  inches.

Speeds of 1/10 to 1/500 of a second as well as adjustments for time exposures are provided by the Graflex Focal Plane shutter found on this camera. There is a tripod socket for use when making time exposures.

The No. 0 Graphic is convenient to carry every day, and its capabilities are such that it is suited to a considerable variety of everyday work and, in addition, for swift action photography.

### *Details*

Dimensions, 5 x  $3\frac{1}{2}$  x  $3\frac{1}{4}$  in.; weight, 25 oz.

### *The Price*

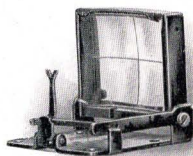
	$1\frac{5}{8}$ x $2\frac{1}{2}$
No. 0 GRAPHIC CAMERA with Kodak Anastigmat Lens, <i>f.</i> 6.3 . . .	\$48.00
N. C. Film Cartridge, 6 exposures, No. 121 . . . . .	.20
N. C. Film Cartridge, 12 exposures, No. 121 . . . . .	.35
Sole leather carrying case . . . . .	4.00

*The prices of camera and film include the Excise Tax.*

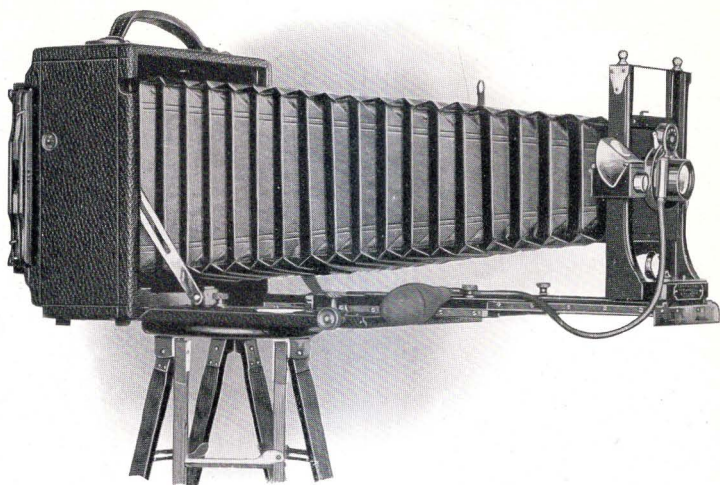
## GRAPHIC SIGHT FINDER

A direct-vision, folding sight finder, to be attached to the top of the camera. The subject is centered on the image area when the intersection of the lines engraved on the finder lens is in direct line with the notch in the top of the vertical sight bar.

The finder folds compactly, and opens automatically at the release of a spring catch.



	$3\frac{1}{4}$ x $4\frac{1}{4}$	$3\frac{1}{4}$ x $5\frac{1}{2}$	4 x 5	5 x 7
Graphic Sight Finder . . . . .	\$3.50	\$3.50	\$3.50	\$3.50



## REVOLVING BACK CYCLE GRAPHIC

**A** RIGID, compact camera whose equipment includes all the special features required for the widest variety of photographic tasks. It is designed primarily for professional and commercial use, but is also well adapted to the needs of advanced amateurs.

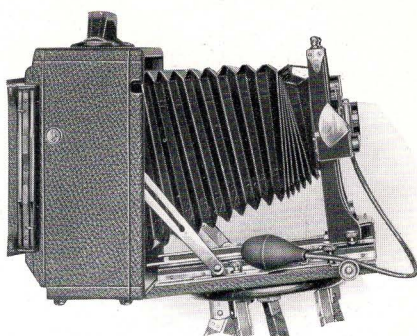
The bellows capacity is unusually long, to accommodate single elements of convertible lenses, such as the Graphic Rapid Rectilinear and the Series VIIa convertible Protar. Either of these lenses, when combined, has an equivalent focus of medium length, suitable for average views at normal distances and for close-up detail and copying with the bellows fully extended. A single element of either of these lenses has a greater focal length, so by using a single element this camera is admirably adapted to landscape and commercial work—wherever true perspective and a large image are required.

By attaching the tripod to the front socket the drop-bed feature of this camera is equivalent to a swing-back, for

preserving in the image any vertical lines that appear in the subject.

The lens board may be raised and lowered to eliminate anything objectionable in the foreground or sky of the image. The revolving back operates smoothly and easily, and is quickly turned into upright position when it is preferable to make the exposure lengthwise of the film.

The Revolving Back Cycle Graphic in either the 5 x 7 or 6½ x 8½ size takes a plate holder or a cut film holder. The 5 x 7 size also accommodates a Film Pack Adapter.



Swing Bed and Rising Front are valuable for architectural subjects.

### Details

	5 x 7	6½ x 8½
Dimensions . . . . .	8¾ x 4¼ x 9¼	10⅜ x 4½ x 10⅜
Bellows capacity . . . . .	22½ in.	26 in.
Weight . . . . .	6¼ lbs.	7½ lbs.
Size of lens board . . . . .	3⅞ x 3⅞ in.	4¼ x 4¼ in.

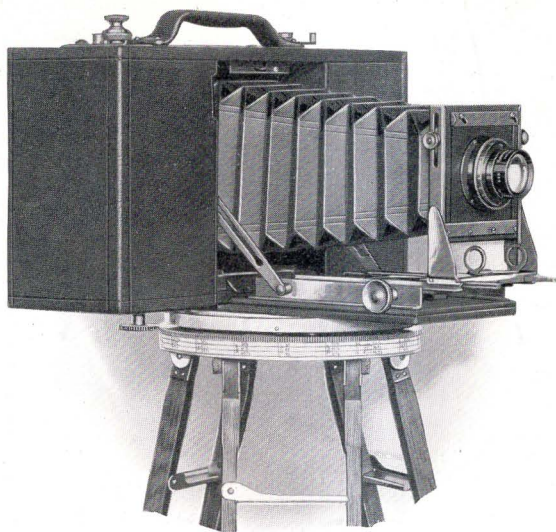
### The Price

*Including one cut film holder or plate holder and sole leather carrying case*

	5 x 7	6½ x 8½
REVOLVING BACK CYCLE GRAPHIC with Graphic Rapid Rectilinear Lens and Automatic Shutter	\$111.00	\$127.00
With B. & L. Protar Lens, Series VIIa, and Volute Shutter	No. 10 214.00	No. 13 251.00
Graphic Plate Holder . . . . .		2.75
Eastman Plate Holder . . . . .	1.75	
Graphic Cut Film Holder . . . . .		2.75
Eastman Portrait Film Holder . . . . .	1.75	
Film Pack Adapter . . . . .	2.50	
Cut Film, doz. . . . .	1.50	2.27
Kodak Film Pack, No. 515 . . . . .	1.90	
Extra lens boards, each . . . . .	.75	.90

*The prices of camera and film include the Excise Tax.*





## THE No. 5 CIRKUT CAMERA

**T**HE distinctive merit of a panoramic picture made with a Cirkut Camera is that it includes the entire view. Excellent opportunities for the advanced amateur to take such pictures occur frequently, and the No. 5 Cirkut Camera, illustrated here, is particularly adapted to amateur use.

It is a complete, self-contained panoramic camera, revolved on its tripod by a positive mechanism, driven by a smooth-running motor which also draws the film across the exposure slot. Adjustments may be made for speeds of  $1/2$  to  $1/12$  of a second, the speed being the time required for a point on the film to pass the slot. The camera revolves through an arc and makes negatives 5 inches high, of any length up to 42 inches.

Film for the No. 5 Cirkut Camera is supplied in rolls of four different lengths. More than one exposure may be made on the same film, so there need be no waste. A perforating device in the back of the camera marks the film so that it may be cut apart before developing without mutilating the negatives.

Composition and focusing are done on a ground glass, the same as with an ordinary view camera. A scale on the edge of the tripod head shows the approximate length that the picture will be, and a register tells exactly the amount of film used from the roll.

The convertible Rapid Rectigraphic lens provides three combinations whose equivalent focal lengths are  $6\frac{1}{4}$ , 11 and 14 inches, respectively. This wide choice of focal lengths makes it possible to select first the viewpoint that will present the best perspective and then the lens that will give the proper size of image from that viewpoint.

In landscape gardening, real estate development, and park planning the Cirkut Camera is invaluable; travellers find it unsurpassed for photographing scenery. Other uses that amateurs make of it include group pictures of large outdoor assemblies, panoramic views of farm scenes, golf courses, mining properties, factory buildings and many more subjects that can be shown best by a continuous picture made by a Cirkut Camera.

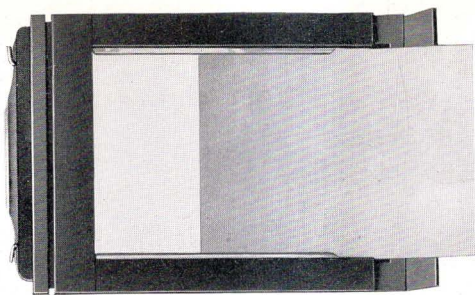
### *Price*

No. 5 CIRKUT CAMERA complete, including Special Convertible Lens;  
 $6\frac{1}{4}$ , 11 and 14 in., one No. 2 Crown Tripod, one Cirkut Tripod Top,  
 Gears, Key and Carrying Case to hold complete outfit. . . . \$ 87.00

### FILM FOR No. 5 CIRKUT CAMERA

	<i>White Label</i>	
5 in. x 15 in., per roll . . . . .		\$ .30
5 in. x 20 in., per roll . . . . .		.45
5 in. x 30 in., per roll . . . . .		.65
5 in. x 42 in., per roll . . . . .		.85

*The prices of camera and film include the Excise Tax.*



## THE GRAFLEX CUT FILM HOLDER

**B**Y attaching the Graflex Cut Film Holder, any Graflex camera that uses plates can be adapted to the use of cut film. It takes the place of the plate holder and is similar in outside appearance.

The construction is changed, however, to compensate for the difference in thickness between film and plates, so that the sensitized surface forms a perfect focal plane. The method of loading also differs. The end of each side of the frame is hinged, forming a flap. After the dark slide is withdrawn this flap opens to permit the film to slide easily into place under the metal retaining flanges. Thus the Graflex Cut Film Holder can be loaded much more quickly than can a plate holder. But the most important advantage is that film is lighter in weight and gives superior results.

### *The Price*

	$2\frac{1}{4} \times 3\frac{1}{4}$	$3\frac{1}{4} \times 4\frac{1}{4}$	$3\frac{1}{4} \times 5\frac{1}{2}$	4 x 5	5 x 7
Graflex Cut Film Holder	\$1.75	\$2.50	\$2.50	\$2.50	\$3.50

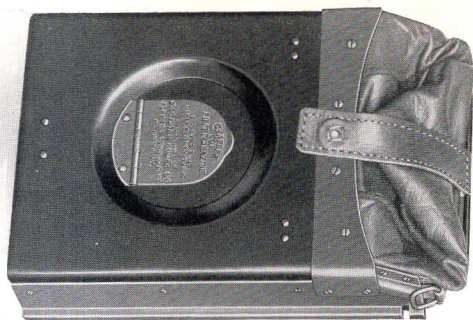
## THE GRAFLEX PLATE HOLDER

Prices given for Graflex Cut Film Holders apply also for Graflex Plate Holders.

## HOLDERS FOR USE ON GRAPHIC CAMERAS

Listed with the Graphic Cameras on pages 29 and 33.





## GRAFLEX CUT FILM MAGAZINE

**T**HE Graflex Cut Film Magazine holds twelve films, each in a separate metal septum. After an exposure the septum is drawn by means of a rod into a light-tight leather bag, attached to the end of the magazine, and re-inserted into the back. The septums bear consecutive numerals, so that the number of exposures made since loading the holder may be told at any time by looking through the ruby window in the back of the magazine.

After inserting the dark slide the magazine may be detached from the camera, and one or more films removed for development without waiting until all are exposed. Any Graflex camera can be placed in its case without removing the Cut Film Magazine.

### *Details*

	$2\frac{1}{4} \times 3\frac{1}{4}$	$3\frac{1}{4} \times 4\frac{1}{4}$	$3\frac{1}{4} \times 5\frac{1}{2}$	$4 \times 5$	$5 \times 7$
Dimensions	$5\frac{1}{8} \times 3\frac{1}{4} \times 1\frac{3}{8}$	$6\frac{1}{4} \times 4\frac{1}{4} \times 1\frac{3}{8}$	$7\frac{5}{8} \times 3\frac{7}{8} \times 1\frac{5}{8}$	$7 \times 5 \times 1\frac{5}{8}$	$9\frac{1}{4} \times 6\frac{1}{4} \times 1\frac{5}{8}$
Weight loaded	12 oz.	18 oz.	$1\frac{1}{2}$ lbs.	$1\frac{1}{2}$ lbs.	$2\frac{1}{2}$ lbs.

### *The Price*

	$2\frac{1}{4} \times 3\frac{1}{4}$	$3\frac{1}{4} \times 4\frac{1}{4}$	$3\frac{1}{4} \times 5\frac{1}{2}$	$4 \times 5$	$5 \times 7$
Graflex Cut Film Magazine	\$12.00	\$14.00	\$15.25	\$15.25	\$17.00

## GRAFLEX MAGAZINE PLATE HOLDER

This attachment is similar to the Graflex Cut Film Magazine but is necessarily bulkier and heavier when loaded. Prices are the same as for the Graflex Cut Film Magazine.

## KODAK CUT FILM

**K**ODAK Cut Film offers every advantage of plates and, in addition, weighs but a fraction as much, is unbreakable, non-halation, easier to handle, and produces negatives of superior quality. It can be used in any cut film holder, the Graflex Cut Film Magazine, or, with film sheaths, in any plate holder.

Two kinds of Kodak Cut Film are supplied.

The regular Kodak Cut Film is equal in speed to the best portrait plate emulsions, and is standard in every respect.

Kodak Cut Film *Super Speed*, as its name implies, has an extra fast emulsion, yet its latitude, gradation and fineness of grain are equal to those of the regular speed. It can be depended on to give the best possible negatives under difficult light conditions or when an exposure must necessarily be short. This super speed feature proves its worth especially when making indoor portraits or snapshots in the shade. And all this added speed is attained without sacrificing any of those qualities on which film superiority is founded.

### *The Price*

	$2\frac{1}{4} \times 3\frac{1}{4}$	$3\frac{1}{4} \times 4\frac{1}{4}$	$3\frac{1}{4} \times 5\frac{1}{2}$	$4 \times 5$	$5 \times 7$
Kodak Cut Film, doz.	\$0.46	\$0.67	\$0.93	\$0.93	\$1.50
Kodak Cut Film <i>Super Speed</i> , doz.	.52	.77	1.03	1.03	1.65

*The prices of Kodak Cut Film include the Excise Tax.*

## KODAK CUT FILM SHEATH

Adapts a plate holder to the use of Kodak Cut Film. It is made of aluminum, ribbed to insure a perfect focal plane. Instantly inserted or removed.

### *The Price*

	$2\frac{1}{4} \times 3\frac{1}{4}$	$3\frac{1}{4} \times 4\frac{1}{4}$	$3\frac{1}{4} \times 5\frac{1}{2}$	$4 \times 5$
Kodak Cut Film Sheath	\$ .10	\$ .10	\$ .15	\$ .15

## No. 2 EASTMAN FILM SHEATH

For adapting  $5 \times 7$  and  $6\frac{1}{2} \times 8\frac{1}{2}$  plate holders to the use of cut film.

### *The Price*

	$5 \times 7$	$6\frac{1}{2} \times 8\frac{1}{2}$
No. 2 Eastman Film Sheath	\$ .20	\$ .25



## GRAFLEX ROLL HOLDER

**T**HIS device equips the Graflex so that it may be loaded in daylight with 6-exposure Eastman Graflex Roll Film. It can be attached quickly to any Graflex (except the 1A and 3A *Autographic*), after removing the cut film holder or focusing panel.

To assure a perfect focal plane the film is kept tightly drawn by a retarding ratchet. Exposure numbers are seen through a ruby window. A dark slide is provided so that the holder can be detached and re-attached at any time without waiting for the entire roll to be exposed.

### *The Price*

#### GRAFLEX ROLL HOLDERS

3 $\frac{1}{4}$ x 2 $\frac{1}{4}$	For Graflex Roll Holder Film No. 50 . . . . .	\$ 9.75
4 $\frac{1}{4}$ x 3 $\frac{1}{4}$	For Graflex Roll Holder Film No. 51 . . . . .	10.25
5 $\frac{1}{2}$ x 3 $\frac{1}{4}$	For Graflex Roll Holder Film No. 52 . . . . .	11.25
5 x 4	For Graflex Roll Holder Film No. 53 . . . . .	11.25
7 x 5	For Graflex Roll Holder Film No. 54 . . . . .	14.00

Graflex Roll Holders will fit Graflex cameras only.

## EASTMAN GRAFLEX ROLL FILM

No. 50, 3 $\frac{1}{4}$ x 2 $\frac{1}{4}$ , 6 Exposures . . . . .	\$ 0.25
No. 51, 4 $\frac{1}{4}$ x 3 $\frac{1}{4}$ , 6 Exposures . . . . .	.45
No. 52, 5 $\frac{1}{2}$ x 3 $\frac{1}{4}$ , 6 Exposures . . . . .	.55
No. 53, 5 x 4, 6 Exposures . . . . .	.55
No. 54, 7 x 5, 6 Exposures . . . . .	.95

To avoid error order film by number.

*The prices of Eastman Graflex Roll Film include the Excise Tar.*

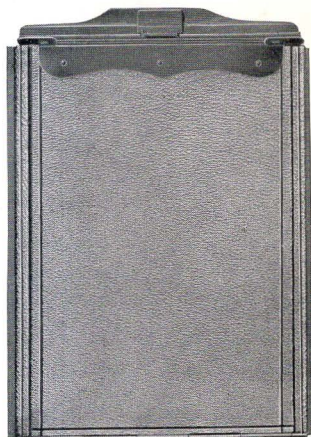


## GRAFLEX FILM PACK ADAPTER

**T**HE Graflex Film Pack Adapter converts the Graflex into a film using camera. The advantage of this convenience is that the camera can then be loaded in daylight with Kodak Film Packs. Twelve exposures may be made without re-loading.

After each exposure a paper tab is withdrawn and torn off, uncovering an unexposed film ready for the next picture. This operation requires but a moment and makes it possible to take as many as a dozen pictures in quick succession.

The Graflex Film Pack Adapter fits in the space ordinarily occupied by a cut film holder or plate holder, and can be used on any Graflex camera except only the 1A and 3A *Autographic*.



Quickly attached or detached. Fitted with a dark slide. Covered with the same high grade of leather used on Graflex cameras.

### *The Price*

	2¼ x 3¼	3¼ x 4¼	3¼ x 5½	4 x 5	5 x 7
Graflex Film Pack Adapter	\$4.50	\$4.75	\$5.50	\$5.50	\$7.50

## KODAK FILM PACKS

**E**ACH pack contains twelve exposures of Eastman N. C. Film, which is non-curling, non-halation and properly orthochromatic. Single films can be taken from the pack in a dark-room, without waiting until all twelve exposures are used.

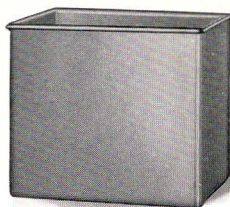
### *The Price*

2¼ x 3¼	3¼ x 4¼	3¼ x 5½	4 x 5	5 x 7
No. 520, \$0.50	No. 518, \$0.90	No. 522, \$1.10	No. 523, \$1.10	No. 515, \$1.90

*The prices of Kodak Film Packs include the Excise Tax.*

## KODAK DEVELOPING BOX NO. 1

This tank provides a swift and easy means of obtaining uniform development of Kodak Cut Film. It takes twelve  $2\frac{1}{4} \times 3\frac{1}{4}$ ,  $3\frac{1}{4} \times 4\frac{1}{4}$ ,  $3\frac{1}{4} \times 5\frac{1}{2}$  or  $4 \times 5$  films, each suspended in the solution from a Kodak Cut Film Developing Hanger. Development proceeds by the time and temperature method.



The tank is made of monel metal and measures  $4 \times 5\frac{1}{4} \times 6$  inches.

### *The Price*

Kodak Developing Box No. 1, without hangers . . . . . \$2.00

## KODAK CUT FILM DEVELOPING HANGER



For use with the Kodak Developing Box No. 1. It is nine inches long so that it lies securely across the top of the six-inch tank.

The clips, which grip the edges of the film, are of monel metal.

### *The Price*

Kodak Cut Film Developing Hanger, each . . . . . \$ .20

## EASTMAN DEVELOPING AND FIXING BOX

For the larger sizes of cut film. During development or fixing, the films are suspended in Eastman Film Developing Hangers No. 4. Made of hard rubber.

### *The Price*

	No. 2 for 10 $5 \times 7$ films	No. 3 for $2\frac{1}{2} \times 5 \times 7$ or $6\frac{1}{2} \times 8\frac{1}{2}$ films
Eastman Film Developing and Fixing Box	\$4.00	\$6.00

## EASTMAN FILM DEVELOPING HANGER No. 4

A strong, light, metal frame, which holds the film securely in channels, without clips.

### *The Price*

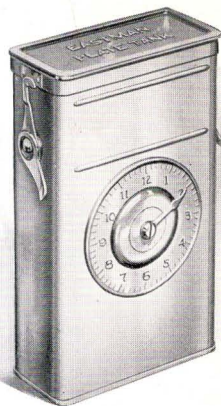
	$5 \times 7$	$6\frac{1}{2} \times 8\frac{1}{2}$
Eastman Film Developing Hanger No. 4	\$ .60	\$ .75

## EASTMAN PLATE TANK

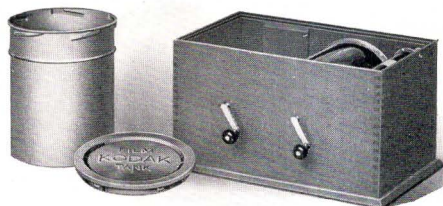
WITH the Eastman Plate Tank twelve, or fewer, plates can be developed at once. With the solution at 65° Fahr. fifteen minutes is required but if double strength developer is used the time is cut to seven and one-half minutes. And all the negatives are certain to be of uniform quality.

### *The Price*

Eastman Plate Tank, 4 x 5, for	
4 x 5, 3¼ x 5½, 3¼ x 4¼	
and 2¼ x 3¼ plates . . .	\$3.50
Eastman Plate Tank, 5 x 7 . . .	5.50



## KODAK FILM TANK



EASTMAN Graflex Film, used in Graflex Roll Holders, and Kodak Film, used in the 1A and 3A *Autographic* Graflex cameras, can be developed in daylight by the Kodak Film Tank. A convenient, simple method of making excellent negatives.

### *The Price*

3½-inch Kodak Film Tank, for 3¼ x 5½ (3A) Kodak Film, 2½ x 4¼	
(1A) Kodak Film and 3¼ x 2¼ Eastman Graflex Film No. 50 . . .	\$5.50
5-inch Kodak Film Tank, for 4¼x3¼ Eastman Graflex Film No. 51	6.50
7-inch Kodak Film Tank, for 5½x3¼ Eastman Graflex Film No. 52,	
5 x 4 Eastman Graflex Film No. 53 and 7 x 5 Graflex Film No. 54	8.00



## PREMO FILM PACK TANK

**T**HIS outfit provides a simple, effective method of developing all or part of a film pack at once and getting negatives of uniform quality. It is made in three sizes, two of which are designed to hold twelve films. The third size holds six 5 x 7 films.



Each film is slipped into a compartment of the cage, as shown in the illustration. After the cage is loaded it is immersed in the developer that is contained in the solution cup, which is light-tight when covered. The time and temperature method of developing then proceeds.

### *The Price*

Film Pack Tank No. 1, for twelve $2\frac{1}{4} \times 3\frac{1}{4}$ films . . . . .	\$1.75
Film Pack Tank No. 2, for twelve $3\frac{1}{4} \times 4\frac{1}{4}$ , $3\frac{1}{4} \times 5\frac{1}{2}$ , or 4 x 5 films . . . . .	3.50
Film Pack Tank No. 3, for six 5 x 7 films . . . . .	4.00

## EASTMAN METAL TRIMMER No. 10

**T**HIS trimmer cuts easily and with perfect register. The knife is self-sharpening, made of tempered steel. The table measures



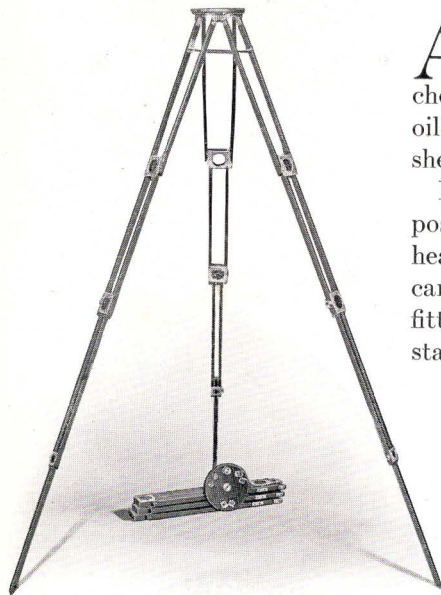
ten inches each way, is engraved in squares, has a brass ruler and a transparent trimming guide.

Finished in polished enamel. Mounted on cushioned metal feet.

### *The Price*

Eastman Metal Trimmer No. 10 . . . . .	\$15.00
--	---------

## THE CROWN TRIPOD



**A** RIGID, quickly-adjustable, telescopic folding tripod. The cherry wood from which it is made is oil-soaked, then rubbed down and shellacked to render it waterproof.

Expansion brackets make it impossible to detach the legs from the head by accident. Binding screws cannot be lost. Joints are snugly fitted so that the tripod always stands rigid.

### *Details*

	No. 1	No. 2
Closed . . .	16¼ in.	17¼ in.
Extended . . .	4½ ft.	4¾ ft.
Weight . . .	36 oz.	65 oz.
Top diameter	4 in.	6 in.

### *The Price*

No. 1 . . . . .	\$ 7.50
No. 2 . . . . .	8.00

## CARRYING CASE FOR CROWN TRIPODS

A case consisting of a long compartment for the Crown Tripod legs, and a smaller compartment to hold the tripod top.

### *The Price*

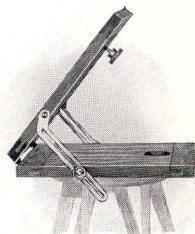
No. 1 Sole Leather . . . . .	\$ 5.00	No. 2 Sole Leather . . . . .	\$5.50
------------------------------	---------	------------------------------	--------

## THE CROWN TILTING TRIPOD TOP

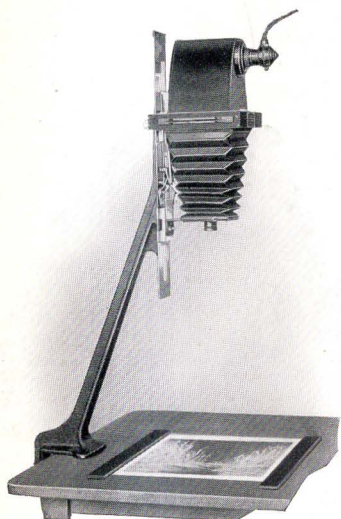
When using this top on a Crown tripod the camera can be pointed upward or downward, at any angle from the horizontal to the vertical, without moving or adjusting the tripod legs.

### *The Price*

No. 1 Crown Tilting Tripod Top, for 4 in. Head	\$2.20
No. 2 Crown Tilting Tripod Top, for 6 in. Head	2.65



## THE KODAK AUTO-FOCUS ENLARGER



WITH this new self-focusing camera, enlarging becomes almost as easy and rapid as contact printing. As the camera is moved up and down on its stand, to make the image larger or smaller, a vertical cam keeps the focus critically sharp. The mechanism is accurate and positive and the whole apparatus is sturdily built.

The standard can be clamped firmly to an ordinary table while the Bromide paper, which lies flat on the table top, is held in position by a quickly adjusted paper holder, without clips or tacks.

Prints from  $1\frac{1}{2}$  to  $3\frac{1}{2}$  diameters can be made from either plate or film negatives up to 4 x 6 inches. The largest possible print is 14 x 21 inches. A No. 0 Graphic negative makes a  $5\frac{5}{8}$  x  $8\frac{3}{4}$  enlargement; a  $2\frac{1}{4}$  x  $3\frac{1}{4}$  negative will make a  $7\frac{7}{8}$  x  $11\frac{3}{8}$  enlargement.

The lens is a Kodak Anastigmat, which assures the best possible definition in the print. A special diffusing disc is supplied separately, for obtaining soft focus effects.

### *The Price*

*(Including Excise Tax)*

Kodak Auto-Focus Enlarger with Kodak Anastigmat lens, electric cord and plug (without the 60-watt Mazda lamp required), set of six flexible metal masks	\$35.00
Diffusing Disc	1.00

## EASTMAN BROMIDE PAPERS

Following are prices per dozen of the most popular of the sixteen sizes in which Eastman Bromide Papers, double weight, are listed.

5 x 7—\$0.60;	$6\frac{1}{2}$ x $8\frac{1}{2}$ —\$1.00;	7 x 11—\$1.40;	8 x 10—\$1.40;
10 x 12—\$2.15;	11 x 14—\$2.65;	14 x 17—\$3.95;	16 x 20—\$5.25.



## KODAK SAFELIGHT LAMP



THE standard darkroom lamp for both professionals and amateurs. Supplied with a 5 x 7, Series 1, safelight for use with film or plates that are not color-sensitive. Safelights of other series can be quickly substituted.

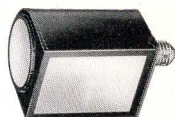
Made of metal, white enameled inside, complete with all electric fittings except bulb.

### *The Price*

Kodak Safelight Lamp . . . . .	\$ 3.25
Extra safelights, 5 x 7, any series . . . . .	.75

## BROWNIE SAFELIGHT LAMP

Similar to the Kodak Safelight Lamp but smaller—fits over a 15-watt Mazda bulb (not supplied). Contains Series 1 safelights in end and side. Other safelights can be substituted.



### *The Price*

Brownie Safelight Lamp . . . . .	\$ 1.35
Extra Circular End Safelight, any series . . . . .	.25
Extra Side Safelight, any series . . . . .	.40

## SAFELIGHTS

All of the following safelights are available for Kodak and Brownie Safelight Lamps.

- Series 00—Yellow light, for use with gaslight papers.
- Series 0 —Bright orange light, for use with bromide paper and lantern plates.
- Series 1 —Orange safelight, for use with films or plates not highly color sensitive.
- Series 2 —Safelight for extra rapid orthochromatic plates sensitive to green but not red.
- Series 3 —Green safelight, for use with red-sensitive panchromatic plates.
- Series 4 —Bright green safelight, for use with ordinary plates, for those who cannot use a red light. Not safe for orthochromatic plates.

## KODAK ANASTIGMAT *f.* 4.5



**F**LATNESS of field, excellence of definition and uniform transmission of light to the focal plane are prime qualities of the Kodak Anastigmat lens *f.* 4.5.

Its speed assures good illumination for the high shutter velocities provided by the Graflex focal plane shutter, and also for home portraiture, where lighting cannot be controlled easily. And, in addition to its special capability for photographing difficult subjects, it is well suited for general amateur and professional use.

The lenses are compactly mounted and provided with an iris diaphragm, adjusted by an outer ring on which are engraved the numbers of the *f.* stop system.

No.	Size of Plate covered with Stop <i>f.</i> 4.5 Inches	Equivalent Focus Inches	Price, including Excise Tax, of Lens in barrel with Iris Diaphragm
30	$2\frac{1}{4} \times 3\frac{1}{4}$	$4\frac{1}{2}$	\$33.00
31	$3\frac{1}{4} \times 4\frac{1}{4}$	$5\frac{1}{2}$	37.50
32	$4 \times 5$	$6\frac{1}{2}$	43.50
33	$3\frac{1}{4} \times 5\frac{1}{2}$	$7\frac{1}{2}$	53.50
34	$5 \times 7$	$8\frac{1}{2}$	66.50
35	$6\frac{1}{2} \times 8\frac{1}{2}$	10	115.00
36	$8 \times 10$	12	160.00

## B. & L. Tessar, *Series Ic*, *f.* 4.5

No.	Size of Plate covered with Stop <i>f.</i> 4.5 Inches	Equivalent Focus Inches	Price of Lens in barrel with Iris Diaphragm
13	$2\frac{1}{2} \times 3\frac{1}{2}$	$4\frac{1}{2}$	\$ 35.00
14	$3\frac{1}{4} \times 4\frac{1}{4}$	$5\frac{1}{2}$	40.00
15	$4 \times 5$	$6\frac{1}{2}$	45.00
15a	$5 \times 7$	$7\frac{1}{2}$	55.00
16	$5 \times 8$	$8\frac{1}{2}$	72.50
17	$6\frac{1}{2} \times 8\frac{1}{2}$	$9\frac{7}{8}$	117.50
18	$8 \times 10$	$11\frac{3}{4}$	160.00

The above prices on B. & L. lenses, where taxes are applicable, include the tax.

REFER TO FITTING LENSES, ON FOLLOWING PAGE.

## FITTING LENSES

**T**HE focal length of the lens selected must be suitable for the Graflex camera with which it is to be used, and the lens must also be correctly fitted and mounted so that the flange is parallel to the sensitive film or plate, if the best photographic results are expected. Therefore, in justice to ourselves, and for the purpose of avoiding errors, our guarantee applies only to cameras that are shipped from our factory with lenses attached.

When lenses of suitable focal length are sent to us for fitting a nominal charge will be made for the work.

*Wide Angle Lenses cannot be used with Graflex Cameras.*

## TERMS

**T**HE prices in this catalogue are strictly net, except to regular dealers who carry our goods in stock. These prices are subject to change without notice. For the convenience of our customers we recommend that they make their purchases from a dealer in photographic goods, as by so doing they can save both time and transportation charges.

**EASTMAN KODAK COMPANY**

*Folmer & Schwing Department*

**ROCHESTER, N. Y.**



DIN-2012

