

Nikon FE.

The automatic SLR
with superior
manual control.



THE NIKON FE

World's finest and most versatile automatic compact.

For decades, Nikon has been identified with magnificently sharp, true-color images... with photography at its finest. Now, with the automatic, compact Nikon FE, you can achieve Nikon quality photography easily and conveniently, in all its fascinating forms.

It begins with a beautifully designed camera that handles with such spirited ease, you'll enjoy photography as never before. The Nikon FE strikes an ideal balance between light weight and reassuringly solid feel, between compact size and ample, conveniently placed controls. As you put the FE through its paces, you experience the smooth precision engineering and instant responsiveness that professionals recognize as the famous "Nikon feel." Soon, you'll find yourself shooting with a confidence that can add positive inspiration to your pursuit of photography at its finest.

And, you go on from there with the versatile automatic Nikon FE. To full manual operation for total creative control with precise match-needle metering and other features the competition can't offer such as a full information viewfinder to monitor all critical camera settings. Attach a Nikon flash unit for automatic and dedi-

cated flash photography. Or couple the motor drive for rapid firepower. And you have the incomparable Nikon system behind you with nearly 70 Nikon lenses, unrivalled close-up facilities and other accessories to fulfill virtually any photographic requirement of the hobbyist or professional photographer.



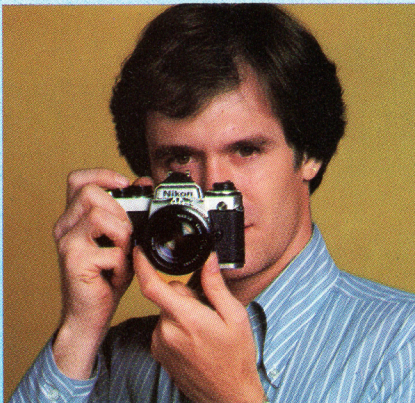


THE NIKON FE

Choose automatic exposure accuracy

With your Nikon FE on "auto," the camera automatically adjusts its shutter to the correct speed. You simply select your lens aperture, focus, and shoot. Result: superb exposures time after time.

The FE uses a professionally reliable electronic metering system that combines the latest dual silicon photo diodes with an exclusive, Nikon-designed Functional Resistance Element and monolithic integrated circuit. Based on the Nikon-developed, true center-weighted metering principle, it measures the brightness of the entire scene but concentrates more than half of its sensitivity on the central portion, clearly defined in the viewfinder. This assures consistently accurate exposures in the widest range of lighting conditions and is equally reliable with the FE held in horizontal or vertical position.



System-wide automation

The Nikon FE extends this automatic exposure accuracy throughout the Nikon system. It's yours with any reflex-viewing Nikon lens, with filters, close-up attachments, even when shooting through a microscope or telescope. Whatever kind of photography you want to do, with the Nikon FE you can do it with complete confidence in the quality of your exposures.

...with depth-of-field control.

Another important advantage of Nikon "aperture priority" automation is that it enables you to control depth-of-field. Some photographs require a small lens aperture for maximum front-to-back sharpness. At other times, you'll want to use a large aperture to throw a distracting background out of focus. The choice should be yours — with the Nikon FE, it always is.

Perfect for blur-free action

Nikon FE automation also gives you the surest way to avoid image blur even with fast-moving subjects. Simply turn the lens aperture ring until the indicator needle you see in the viewfinder reaches its highest point, and you'll be shooting at the fastest possible shutter speed, automatically!

...Add your own creative touches automatically or switch to manual

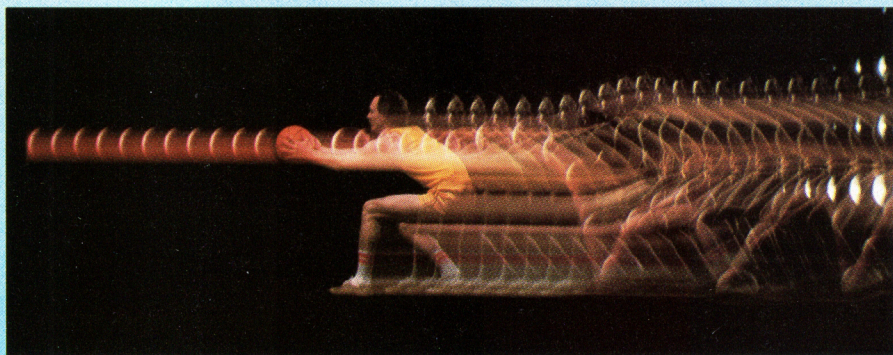
It's easy with the Nikon FE. In fact, this camera not only gives you a wide choice of controls for determining your own exposures but also links them to its versatile metering system. With your FE in automatic mode, you can "memorize" an automatically determined shutter speed setting by simply pressing the dual-purpose self-timer lever towards the lens, activating the ingenious Exposure Memory Lock. This feature is especially useful in bracketing exposures. Or, you can program the camera to increase or

decrease the exposure up to plus or minus 2 EV automatically, by simply turning the exposure compensation ring. Moreover, you can switch to accurate manual operation at any time while maintaining through-the-lens metering. You simply set the shutter dial to any desired speed and adjust the lens aperture until the two needles visible in the finder are aligned. With the Nikon FE, the choice is always at your fingertips. And, your metering system is always there to assure precise, reliable exposures.

Precise multiple exposures

Explore a new world of creative imagery with a touch of your finger. Just move a convenient control while stroking the advance lever for each additional exposure on the same frame. Or,

capture multiple images as fast as 3.5 shots per second with motor drive. The frame counter remains stationary until you actually advance the film. It couldn't be easier — or, more fascinating....



THE NIKON FE

Flash exposures are automatic, too

Slide the Nikon SB-15 thyristor electronic flash onto the Nikon FE, switch the flash on, and amazing things happen. With your FE in the automatic mode, the shutter is



automatically, electronically programmed for the 1/90 sec. sync speed, and an LED ready-light in the eyepiece glows to signal that the unit is ready to flash. Press the shutter release button, and the thyristor-controlled SB-15 automatically gives you the correct amount of light for a precise flash exposure.

What if your Nikon FE is set for a specific shutter speed? If it's anywhere between 8 seconds and 1/125 sec., you'll get the same go-ahead signal from the finder ready-light, and your flash exposure will be automatically accurate. If you've accidentally chosen a shutter speed above 1/125 sec., the LED signal blinks intermittently to alert you to change the setting. It's virtually foolproof!

And, there's more to the Nikon SB-15 than this automatic wizardry. Its energy saving circuitry can give you up to a thousand flashes (depending on distance) per set of alkaline batteries. Recycling time is as short as under one second (also depending on subject distance and aperture)—actually permits flash photography in sync with your motor drive. You can even bounce the light up or down with the SB-15's tilting flash head. And, you're always sure of dependable, high light output on automatic or manual settings.

While the SB-15 alone is designed to provide all these advantages with the Nikon FE, the camera, of course, works with other electronic flash units, too, at shutter speeds up to a "ghost-free" 1/125 sec. (Ready-light and auto sync setting operate with Nikon SB-15 and SB-E units, or SB-11 and SB-14 units when connected by the SC-13 Extension Cord.)

Motor drive adds speed plus

Add the compact MD-12 motor drive to your Nikon FE, in just seconds, and you're in for more photographic thrills than you ever imagined. In continuous shooting, you can capture 3.5 images per second at shutter speeds from 1/1000th to 1/125th; at slower shutter speeds, the motor automatically selects the fastest possible firing rate. And single shots can be made automatically too, from 1/1000th to 8 full seconds. For sports, news, wildlife, children and more, the motorized Nikon FE is ideal — as it is for capturing those fleeting moments and expressions that so often make the difference between a good picture, and a great one.

The Nikon FE/MD-12 combination handles with exceptional ease. The motor's comfortable, anatomical grip has its own shutter release that first turns on the FE meter, then fires the shutter — and, automatically turns the meter off about 50 seconds after you're done shooting. Multi-exposures, loading and unloading are as easy with the motor as without;

you can even advance film manually if you wish. It holds 8 penlite alkaline batteries that can power as many as 3600 exposures. For professional versatility, you can trigger the motor-driven FE by remote control with such Nikon accessories as the unique Modulite (which uses a special, modulated beam of light), radio control, or intervalometer.



More than 20 years of Nikon experience in building professional motor drives is part of every MD-12. You can always shoot with confidence in its reliable performance.

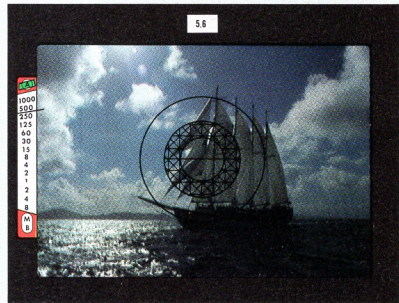


THE NIKON FE

Full-information viewfinder

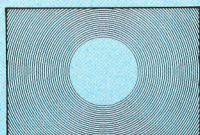
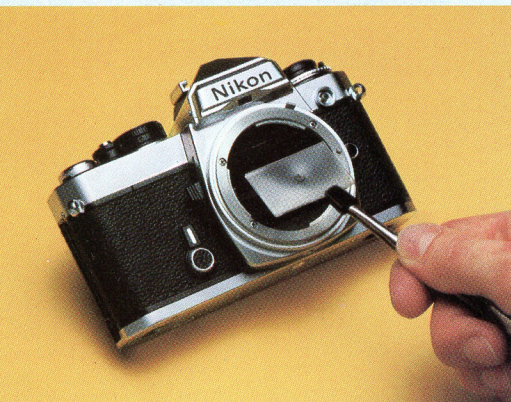
The FE finder not only gives you a big, bright, clear preview of every picture, it also keeps you in full control. Complete exposure information is constantly before your eye, without intruding on the image. At the top appears the selected aperture of your Nikon lens. At the left, a complete shutter speed scale with indicators for automatic and manual match-needle operation as well as over/under exposure. The center-weighted metering area is outlined by a large circle.

In addition, the FE finder provides a built-in ready-light for use with

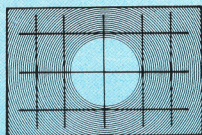


the Nikon SB-15 or SB-E automatic flash. The eyepiece is rubber-cushioned for comfortable viewing. And, for extra versatility, you can add such Nikon accessories as a right-angle finder, 2X magnifier, and diopter-correcting lenses.

Interchangeable finder screens



Type B

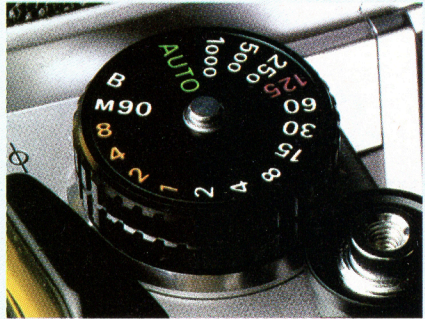


Type E

The standard all purpose "K" screen illustrated above makes pin-point focusing fast and easy with any lens. It provides 3-way focus controls: Central split-image rangefinder spot, microprism ring, and overall matte Fresnel-type field. For special applications, this screen is quickly interchangeable with other, optional screens: Type B, with matte central spot (ideal for macro and telephoto shots), or Type E, also with matte central spot plus a grid of vertical and horizontal lines (valuable in multi-exposure and other situations requiring precise composition). All three are specially designed for use with the Nikon FE.

Electronically accurate shutter

Linked to the camera's meter system by ingenious, Nikon-designed electronics, the FE shutter provides speeds from 8 seconds to 1/1000th, plus B. These are continuously variable in automatic mode, enabling the system to set the precise speed required. (In action situations, turning the lens aperture ring until the finder needle reaches the highest number automatically gives you the fastest possible shutter speed.) In manual mode (match-needle control), you can choose any of 16 calibrated settings. Even if the long-life batteries (about 1 year in average use) that power both the shutter and meter are depleted, you can still shoot at



the mechanically controlled M/90 (1/90th) or B settings. The specially designed, all-metal FE shutter travels upward (instead of down) and uses a special braking system that results in smooth, reliable, extra-quiet operation.

Instant lens changing

It takes just a quick 1/6 turn of the lens to attach any AI-Nikkor or Nikon Series E to the rugged Nikon FE bayonet lens mount. This automatically programs the meter system for full-aperture operation, assuring the brightest possible finder image. Of course, the FE also accepts all other reflex-viewing Nikkor lenses for which it provides stopdown metering, both automatic and match-needle. (If you own any non-AI Auto Nikkors, most of them can be modified for full-aperture AI operation. Inquire for details.)



THE NIKON FE

“Memory lock”/self-timer

(A) Memory lock allows you to base automatic exposure on selected part of scene (as with backlighting, subject in shade against bright background or vice versa). Simply push lever towards lens while metering selected area to memorize exposure setting (meter indicator continues to respond for information purposes only). Release lever after exposure to

restore normal automatic control.

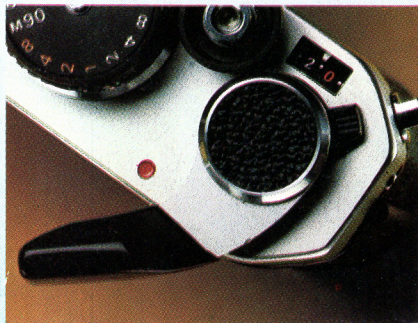


(B) Move lever in opposite direction for self-timer operation, which releases shutter after 10-second delay (approx.). Lever may be turned back to

cancel the self-timer action without making an exposure.

Advance lever/meter switch

Pull out to advance film, cock shutter and turn on meter with one rapid 135° sweep. With lever restored to flush-above-camera position, shutter release is locked and meter turned off. Precision-smooth ball bearing lever action typifies the camera's Nikon quality. (In motor drive operation, gold-plated electrical contacts assure trouble free meter operation.)



Lasting Nikon quality

The Nikon FE is engineered in the Nikon tradition of uncompromising professional quality. Its reliable accuracy is achieved by numerous unique refinements:

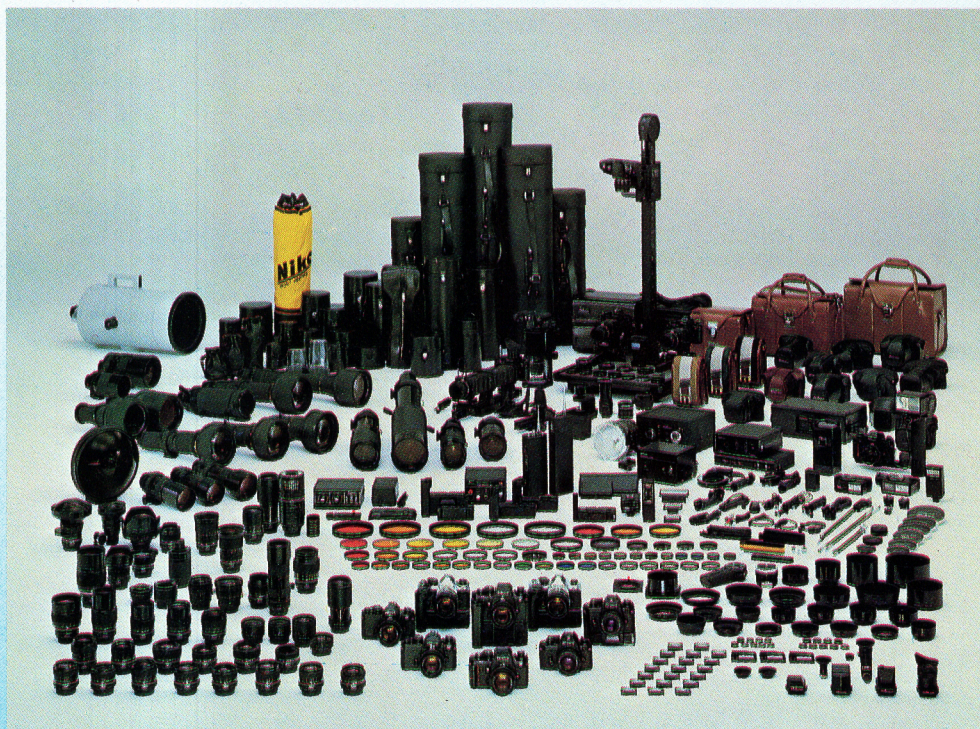
- True center-weighted metering with dual sensors to eliminate “blind spots.”
- An oversize mirror, preventing finder image cutoff even with long telephoto lenses, with a titanium mount that prevents focus shift even in extreme temperatures.
- Special 5-point film flatness system including cassette stabilizer, extra long guide rails and pressure plate for maximum edge-to-edge sharpness.
- Rugged construction, using precision castings and meticulously machined hard-metal gears (instead of powder-pressed parts) for reliable performance far beyond other compact cameras.

The Nikon FE... Part of the Nikon System

There are no limits to your capabilities to creative photography with the Nikon FE. For, this camera is your automatic key to the most comprehensive photographic system ever created. The Nikon system provides more than 60 world-famous Nikon lenses and hundreds of precision accessories with which to constantly explore new horizons, with the added convenience and assur-

ance of reliable Nikon FE exposure automation.

Most important, these Nikon system lenses and accessories are designed and engineered specifically for use with Nikon system cameras. They alone can give you the superior image quality that has made Nikon the hallmark of photographic excellence throughout the world.



THE NIKON FE

Interchangeable Nikon Lenses

Nearly 70 available, ranging from the 6mm Fisheye with 220° picture coverage to a 2000mm mirror-telephoto lens, with 40X magnification compared to the "normal" 50mm lens. All interchangeable Nikon lenses, including AI-Nikkor and Series E, are made from

Nikon's own optical glass and incorporate our exclusive multi-layer Integrated Coating for optimum performance. By any criterion, Nikon gives you the most outstanding array of optics in 35mm photography.

Nikon Fisheye Lenses from 6mm to 16mm provide spectacular pictorial effects...also indispensable for architectural, industrial and scientific photography.

Nikon Wide Angle Lenses range from 13mm to 35mm—ideal for panoramic landscapes, cramped interiors and exciting visual imagery.

Nikon Normal 50mm Lenses—high-speed all-purpose optics of superior resolution and brilliance enhanced by multi-layer coating.

Nikon Telephoto Lenses—compact, automatic lenses from 85mm to 400mm that pull in distant subjects with ease.

Nikon Super-Telephoto Lenses from 400mm to 1200mm, to bring far-away action as much as twenty-four times closer.

Nikon ED Telephoto Lenses—180mm to 1200mm Nikkors incorporating exclusive Nikon ED (Extra-Low Dispersion) optical glass, with significantly improved sharpness and color correction as compared to conventional telephotos, resulting in virtually apochromatic performance.

Nikon Reflex Lenses from 500mm to 2000mm, utilizing the principles of astronomical telescopes built

by Nikon for leading observatories. Compact, lightweight and incredibly sharp.

Nikon Zoom Lenses, the first zoom lenses for 35mm photography to equal fixed focal length lenses in performance quality. Choose from a variety of different Nikkor and Series E zooms (including ED models) starting at 25mm up to 1200mm.

Nikon Micro Lenses, the 55mm, 105mm and 200mm Micro-Nikkors, are designed for exceptional image quality at distances from ultra close-up to infinity.

Nikon's Perspective Control Lenses, the 28mm and 35mm PC-Nikkors give view camera perspective control to 35mm photography.

Nikon's 120mm Medical-Nikkor lens is a completely self-contained close-up system with built-in shadowless electronic flash and focusing light.

Ultra-High-Speed Nikon Lenses in the most widely used focal lengths, for successful available light and action photography. Exciting optics include the 35mm f1.4, 50mm f1.2, 85mm f1.4, 200mm f2 ED-IF and the 300mm f2.8 ED-IF.



THE NIKON FE

Close-up equipment

This fascinating area of photography becomes doubly rewarding with the Nikon FE... and doubly easy with this camera's automatic through-the-lens exposure control. The Nikon system enables you to get as close to your subject as you want. It offers the widest array of equipment for close-up and macro work (up to 22x magnification of small objects). There are low-cost auxiliary lenses, standard and automatic extension tubes, a choice of highly versatile bellows units, slide duplicating attachments, even electronic ring-light flash units for shadow-free illumination, in addition to automatic lenses that provide up to life-size (1:1) reproduction. And, as one of the world's foremost maker of research microscopes, Nikon also offers the finest equipment for 35mm photomicrography.

All these Nikon accessories are designed to fit your Nikon FE with incomparable precision, which contributes to the superior quality of your close-up photography with the Nikon system.*

*Individual, detailed folders describing Nikon lenses, Nikon close-up equipment, and other Nikon accessories are available from your Nikon dealer, or write to Nikon Inc.

Plus...

Nikon optical glass filters, viewfinder attachments, camera and compartment cases, flash units and accessories, and much more. You'll always find the equipment for best results in the Nikon system — the most comprehensive ever created for 35mm photography.

Nikon World Magazine

Nikon World is a special publication devoted to everyone who appreciates fine photography, from those just starting out to the most accomplished SLR photographer. Each issue brings you portfolios of magnificently printed full-color and black-and-white imagery filled with information and inspiration to help you enjoy photography even more. But more than just pictures, Nikon World keeps you up to date on the latest Nikon products and helps your photographic technique with new ideas. Each yearly subscription includes three seasonal editions plus a fourth calendar issue to enjoy for an entire year. For subscription information, write to: Nikon World, 623 Stewart Ave., Garden City, NY 11530.

Your Nikon dealer will be glad to give you an expert demonstration of the Nikon FE and its system of lenses and accessories.

Technical Highlights

Exposure Control: Fully automatic aperture-priority with all reflex-viewing Nikon lenses; also match-needle metering control. Built-in exposure compensator with -2 EV to $+2$ EV range, and unique "Memory Lock" offering bracketing control capability.

Meter System: Through-the-lens, true center-weighted, with dual silicon photo diode sensors; full-aperture metering with all AI-Nikkor lenses and Nikon Series E lenses, stopdown metering with uncoupled lenses or attachments. EV range 1-18; ASA 12-4000.

Shutter: Electronically-timed, all-metal, vertical-travel; 8 sec.- $1/1000$ th sec. (stepless in auto mode) plus mechanically controlled M/90 ($1/90$ th) and B; manual operation possible without batteries at M/90 and B.

Viewfinder: Displays full shutter speed scale with indicators for use in auto/manual operation, under/over exposure; also aperture of AI-Nikkor lens and Nikon Series E lenses via Nikon Aperture Direct Reading system. Standard Nikon K screen, interchangeable with other finder screens designed exclusively for Nikon FE.

Flash: Electronic flash sync at all speeds to $1/125$ sec., flashbulbs to

$1/30$ sec.; safety hot shoe and PC terminal for screw-on Nikon or conventional connecting cords; built-in contact for automatic shutter programming and eyepiece LED activation with Nikon SB-15 or SB-E flash units. (Nikon SB-11 and SB-14 units provide dedicated operation when connected with the optional SC-13 Extension Cord.)

Multiple Exposures: With top-mounted lever; functional with or without Nikon Motor Drive.

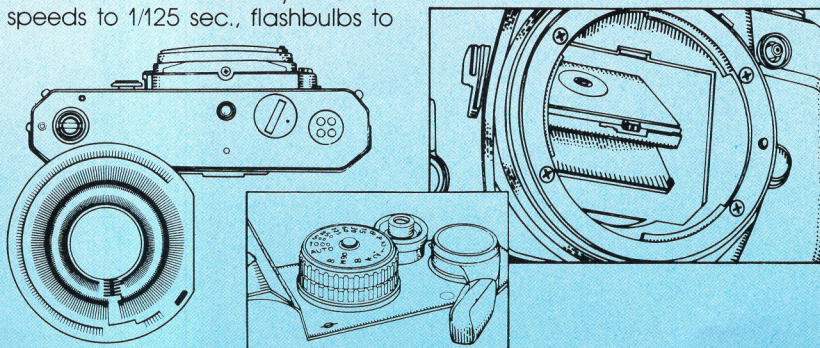
Film Advance: Single-stroke 135° lever, also activates meter; accessory Nikon Motor Drive MD-12 gives single shots or continuous operation at up to 3.5 frames per second.

Depth-of-Field Preview: By pushbutton, for use in auto or manual operation and for automatic metering with non-meter-coupled auto-diaphragm lenses.

Self-Timer: Built-in, approx. 10-sec. delay; cancellable. Also serves as control for exposure memory lock.

Batteries: Two 1.5v Silver Oxide (Eveready S76 or equivalent) power meter and shutter; LED battery tester built-in.

Finish: Available in satin chrome-and-black or professional all-black finish.



Nikon
We take the world's
greatest pictures.™

Nikon Inc., Garden City, New York 11530

Specifications Subject
to Change Without Notice

12513-200-7/82
Printed in U.S.A.