

FUJICA

AX-1



FUJICA
X SLR

Fujica AX-1....

The Simplest Aperture-priority AE Camera

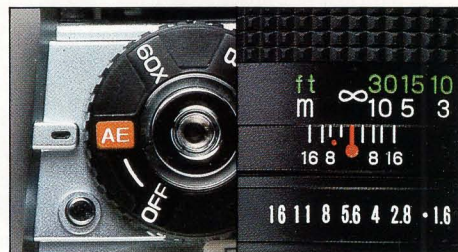
Advanced Features And Extremely Simple Operation
In An All New SLR From Fuji Film



FUJICA AX-1

The compact, lightweight new Fujica AX-1 is one of the easiest-to-own and easiest-to-use aperture-priority AE cameras available today. For normal photography, you merely set the shutter control dial to "AE" and select the desired aperture. After that, the camera selects the shutter speed. There's also an exciting variety of advanced features that increase photographic fun and potential. Like AE control for close-ups with microscope or bellows. And with the Fujica Auto Strobe 300X and AZ. There's also a bayonet mount that accepts the superb new X-Fujinon lenses. Plus full compatibility with system accessories such as the Fujica Auto Winder X and Fujica Photo Recorder data back.

Aperture-priority AE System



The AX-1 uses an aperture-priority AE system to make operation as simple as possible. For correct exposure all you have to do is set the shutter control dial to "AE" and select the desired aperture. The electronic circuitry automatically calculates and sets the required shutter speed. This system enables full control of depth-of-field because of the aperture-priority feature. Yet shutter speeds can also be controlled by merely changing the aperture as required.

Stopped-down and Electronic Flash AE

Besides the aperture-priority AE mode for normal photography, the AX-1 also features stopped-down AE for automatic exposure control with close-up equipment



such as bellows and microscope. The earlier screw-mount Fujinon lenses can also be used with an adapter. And electronic flash AE enables fully automatic flash exposure control with the Fujica Auto Strobe 300X and AZ.

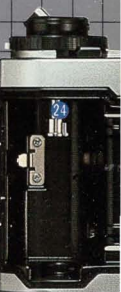
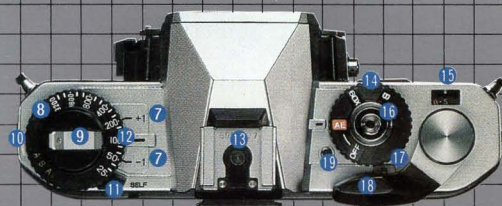
Simple, Uncluttered Viewfinder

The viewfinder of the AX-1 is especially easy to use because of the simple, uncluttered layout. Yet the LED display of shutter speed ranges, under- and over-exposure warnings and battery checker provide all the information necessary to

keep the situation under control. The three-way focusing screen makes focusing fast and accurate.

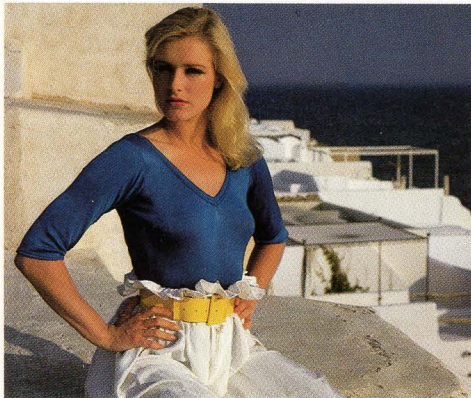
Fujica-X Bayonet Mount

Of special interest is the new Fujica-X bayonet mount used on the AX-1. The bayonet construction holds lenses securely in place under even the hardest usage. And the 1/6 (65°) turn makes lens changes fast and easy. A wide range of new X-Fujinon interchangeable lenses are available with this mount to handle virtually any need.



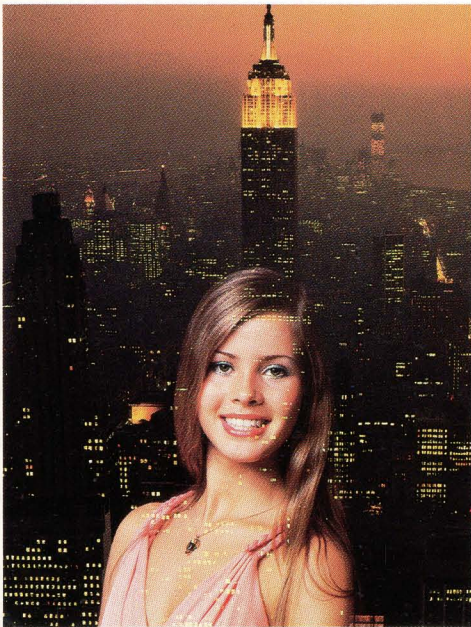
Fractional Exposure Control

The Fractional Exposure Control function of the AX-1 enables a plus or minus variation of exposure of up to one full f-stop. Convenient for compensating backlighting or creating high- and low-key effects.



Push-button Multiple Exposure

Multiple exposures are no problem with the AX-1. Just take the first photograph, operate the film advance lever while pressing "R" rewind button and take another shot. This can be repeated any number of times with the film held in perfect register. Skillful use of this function will open the doors to new creativity.



Extras That Make a Difference

Light-acting Electromagnetic Shutter Release ①

A light 100 grams of pressure is all that's needed to operate the electromagnetic shutter release of the AX-1. Operation is so smooth that blurring due to camera shake is practically eliminated.

Electronic Self-timer ②

Another convenient feature is the built-in electronic self-timer. Count-down is a precise 12 seconds. And an audible electronic signal tells when the timer is operating.

Reversing Type Exposure Counter ③

The exposure counter of the AX-1 counts backward as the film is being rewound to

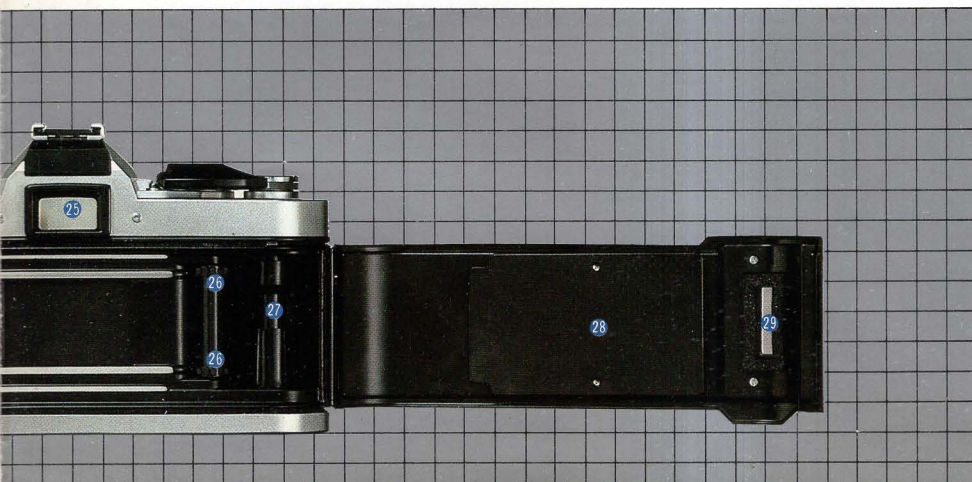
indicate that the film is moving properly. It also resets automatically to zero when the camera back is opened.

Built-in Hotshoe ④

The built-in hotshoe of the AX-1 provides automatic flash control when the Fujica Auto Strobe 300X or AZ is used. Cordless operation is also possible with other units.

Film Check Window ⑤

This convenience feature tells at a glance whether or not the camera is loaded with film. Film type and number of exposures are shown when Fuji films are used.



- | | |
|----------------------------------|-------------------------------|
| ① Battery Compartment Cover | ⑬ Shutter Release |
| ② Preview Button | ⑭ Rewind Button |
| ③ Aperture Control Lever | ⑮ Film Advance Lever |
| ④ Fujica X-Mount | ⑯ Shutter Speed Selector Lock |
| ⑤ Lens Lock | ⑰ Auto-Winder Coupling |
| ⑥ Quick-return Mirror | ⑱ Tripod Socket |
| ⑦ Fractional Exposure Control | ⑲ Self-timer Signal Unit |
| ⑧ Film Speed Selector | ⑳ Auto-Winder Contact |
| ⑨ Film Rewind Crank/Knob | ㉑ Film Rewind Spindle |
| ⑩ Film Speed Selector Lock | ㉒ Eyepiece |
| ⑪ Self-timer Lever (Main Switch) | ㉓ Sprocket Wheel |
| ⑫ Film Speed Setting Mark | ㉔ Take-up Spool |
| ⑬ Hotshoe (X-contact) | ㉕ Pressure Plate |
| ⑭ Shutter Speed Selector | ㉖ Film Check Window |
| ⑮ Exposure Counter | |

Fujica-X System Accessories That Add New Potential



FUJICA AUTO WINDER X

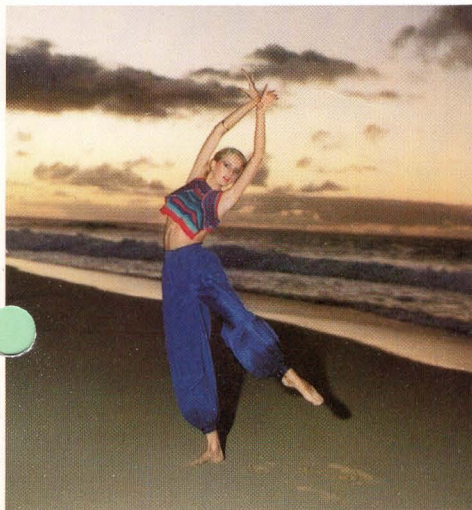
Easily attached to the base of the AX-1, the Fujica Auto Winder X delivers continuous sequences at a rate of up to 2 frames per second to keep you on top of the action. And single frame sequences for effortless film advance. Either is available instantly with the flip of a switch. A red LED lights to indicate that the film is advancing properly. And the winder stops automatically when the end of the film is reached.



FUJICA AUTO STROBO 300X



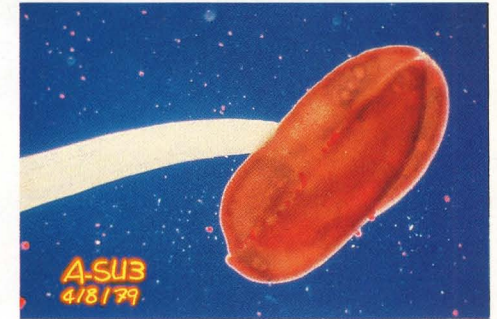
This unique two-head automatic flash clips onto the hotshoe of the AX-1 to provide real lighting variety with a single unit. For normal photography, the main flash head operates at Guide Number 30 (ASA100/meter) for powerful overall coverage. But, when bounce flash is desired, the main flash head drops to Guide Number 25 while the sub-head provides soft, natural fill-in with a rating of Guide Number 6. Operation requires only setting the camera lens to one of the three designated apertures. After that, exposure is calculated automatically, even for bounce flash.



FUJICA PHOTO RECORDER



This is a new type of data back that fits in the place of the regular back of the AX-1 to provide easy entry of any type of data directly on the film, before or after exposure. Since data entry is performed with the built-in "light pen", any type of numbers, letters, symbols and other marks can be added as desired. Great for remembering dates and places as well as for recording pertinent data of all types.



FUJICA AUTO STROBO AZ

Clipped to the hotshoe of the AX-1, the Fujica Auto Strobe AZ provides effortless flash operation. This advanced unit automatically senses film speed and adjusts flash output accordingly. Operation is possible at any aperture. Convenient for a variety of purposes. The Guide Number 17 output rating handles most situations easily for sharp, bright photos. Flash photography was never easier.





Wide Range of X-Fujinon Interchangeable Lenses

To go with the new Fujica-X bayonet mount, Fuji Film has developed the new X-Fujinon series of interchangeable lenses. Extending from 16mm fisheye to 400mm super-telephoto, this series provides an extremely wide range of photographic possibilities.



The New High-performance X-Fujinon Compact Lens Series

WIDEANGLE

- EBC X-FUJINON-W 24mm f/2.8 DM
- EBC X-FUJINON-W 28mm f/3.5 DM
- EBC X-FUJINON-W 35mm f/2.8 DM

NORMAL

- EBC X-FUJINON 55mm f/1.6 DM
- X-FUJINON 55mm f/1.6 DM
- X-FUJINON 55mm f/2.2

TELEPHOTO

- EBC X-FUJINON-T 100mm f/2.8 DM
- EBC X-FUJINON-T 135mm f/3.5 DM
- EBC X-FUJINON-T 200mm f/4.5 DM
- EBC X-FUJINON-T 400mm f/4.5

ZOOM

- X-FUJINON-Z 29-47mm f/3.5-4.2 DM
- X-FUJINON-Z 43-75mm f/3.5-4.5 DM
- EBC X-FUJINON-Z 75-150mm f/4.5 DM

SPECIAL PURPOSE LENSES

- EBC X-FUJINON-FISH-EYE 16mm f/2.8 DM
- EBC X-FUJINON-MACRO 55mm f/3.5 DM

Note: Lenses designated EBC are Electron Beam Coated, a special Fuji process to virtually eliminate ghost and flare.

FUJICA AX-1 SPECIFICATIONS

Type: 35mm single-lens reflex aperture-priority automatic exposure camera with electronically controlled focal plane shutter.

Picture Size: 24 × 36mm.

Exposure Modes: Aperture-priority AE, electronic flash AE, plus manual with "B" and 1/60 sec.

Standard Lenses: X-Fujinon 55mm f/2.2.
X-Fujinon 55 mm f/1.6 DM

Lens Mount: Fujica-X bayonet; 65° turning angle; flange back 43.5mm.

Viewfinder: Fixed eye-level pentaprism, silver-coated.

Field of view: 92% vertical and horizontal.

Magnification: 0.98x (with 55mm lens at infinity).

Focusing: 3-way system (split image, microprism, ground glass).

Mirror: Quick-return mirror, surface-treated for increased light reflection.

Eye-piece shutter: By fitting eyepiece cap.

Viewfinder Information: By LED display.

Indicators: LED indication of speeds (with scale), over/under-exposure warning, battery warning.

Activation of display: Viewfinder display activated by halfway pressure on shutter release button, with main power switch on.

Auto Exposure System: Electronically controlled.

Exposure meter: Through-the-lens (TTL) center-weighted averaging meter, with silicon photocells.

Metering range: EV 2 - 18 (1/2 sec. at f/1.4 - 1/1000 sec. at f/16, ASA 100/21 DIN).

Film speeds: ASA 25 - 3200 (15 - 36 DIN).

AE lock: With control dial set for "AE," pushing halfway down on shutter release freezes meter reading, locks it in memory.

Exposure compensation: Up to ±1 f-stop steplessly (click-stopped in 1/3 steps); by film speed dial.

Stop-down button: Lens diaphragm closed down while pressure is kept on the button.

Shutter: Electronically controlled cloth focal plane shutter, oil-less metal used in critical friction points.

Speed range: 1/2 sec. to 1/1000 sec. plus "B" and 1/60 sec. manual speeds.

Multiple exposure: Working film advance lever while pushing on "R" (for Rewind) button primes shutter for multiple exposure; process repeatable as often as wanted.

Self-timer: Electronically controlled, 12-sec. delay time; timer action signaled by electronic sound.

Shutter Release Button: Electromagnetic shutter release; halfway depression activates exposure meter and turns on viewfinder display; full depression makes exposure; with cable release socket.

Flash Synchronization: X-contact, 1/60 sec. sync speed.

Flash fittings: Hot shoe on top of pentaprism, with contacts for auto operation with accessory flash unit.

Auto flash operation: With accessory flash unit, camera automatically sets flash synch speed and brings on 1/60 sec. LED display when flash is ready to fire; flash unit controls light output to suit subject distance, aperture and film speed in use.

Camera Back: Back cover springs open when rewind crank is pulled up; can be detached and replaced with Fujica Photo Recorser data back.

Film Loading: Easy loading with multi-slit take-up spool.

Film Advance: Single-stroke lever, winds also in multiple strokes; 144° winding angle, 25° standoff.

Frame Counter: Auto-reset additive type; counter reverses with film rewind action; no frames advanced during multiple exposure operation.

Film Rewind: By rewind button and crank; button resets itself when rewind is completed.

Power Source: One 6-volt silver oxide battery (JIS-4G13, Eveready No. 544, Mallory PX28), or alkaline-manganese battery (Eveready No. 537); half-year battery life under normal use.

Battery check: Red battery check LED provided in viewfinder, next to shutter speed LEDs; blinking LED means insufficient battery power.

Power switch: Camera draws power when shutter speed dial is set for "AE," "60X" and "B"; power turned off at "OFF" position.

Dimensions: 135 × 84.5 × 48.5mm (5-5/16 × 3-5/16 × 1-7/8 in.) (body alone); 135 × 84.5 × 85mm (5-5/16 × 3-5/16 × 3-11/32 in.) (with 55mm f/2.2 lens). 500g (17.5 oz.) (body alone); 630g (22.1 oz.) (with 55mm f/2.2 lens).

Weight:

Accessories: Hard case, strap, lens cap, viewfinder eyepiece cap.

Optional Accessories: Fujica Auto Winder X, Fujica Auto Strobe AZ, Fujica Auto Strobe 300X, Fujica Photo Recorser, Fujica Mount Adapter X-D, Fujica Mount Adapter X-S, Fujica Auto Extension Tube X25, Fujica Auto Extension Tube X50, Fujica Auto Bellows X, Fujica Slide Copier X, Fujica Microscope Adapter X, Fujica Macroincopy X, Fujica Reverse Adapter X, Fujica Focusing Rail X, Fujica Right-Angle Finder, Fujica Eyesight Adjustment Lenses, Fujica Eyecup, Fujica Close-up Lens, Fujica Lens Hood 55.

FUJICA AUTO WINDER X SPECIFICATIONS

Winding Speed: Approx. 0.5 sec. (up to two frames a second during continuous operation).

Operation: By shutter release button on camera body, with winder switch turned on.

Coupled Shutter Speed Range: 2 sec - 1/1000 sec., plus B, for both continuous and single-frame modes.

Frame Counter: Camera frame counter coupled to winder action.

Winder Action Check: By red LED above winder switch; LED lights when film is being advanced properly.

Automatic Stop Circuit: Winder stops automatically when film is finished or when batteries lose working voltage.

Power Source: Four AA-size (penlight) batteries. Minimum winding capacity: 20 36-exposure rolls at normal temperature (carbon-zinc batteries).

Attachment to Camera: By thumbscrew that fits in camera's tripod socket.

Dimensions: 137 × 36 × 37.5mm. (5-3/8 × 1-7/16 × 1-15/32 in.)

Weight: 250g (8.8 oz.) (without batteries).

FUJICA AUTO STROBO 300X SPECIFICATIONS

Type: Electronic flash with series control auto flash operation.

Camera Fitting: Clip-on in camera hot shoe; locking provision.

Guide Number: 30 (ASA 100-meter)
Two flash tubes are used in bounce flash, with these guide numbers:
Main flash unit: 25 (ASA 100/meter)
Sub-flash unit: 6 (ASA 100/meter)

Light Coverage: Corresponds to angles of view of 35mm lens with 35mm film format.
With Wide Adapter, illumination covers picture area of 28mm lens.

Recycling Time: 7 sec. (with fresh set of alkaline-manganese batteries).
5 sec. (under similar conditions with nickel-cadmium batteries).

Light Quality: Daylight type.

Number of Flashes: 150 flashes with AA-size (penlight) alkaline manganese batteries.

Aperture Selection: Three auto apertures, color coded, plus manual.
With ASA 100 film (21DIN), color aperture setting work with following lens apertures: Red: f/2.8, Green: f/5.6, Yellow: f/11

Flash Distance Range:
Red Mark: 1.5 - 10.7m (5 - 36 ft.)
Green mark: 1.0 - 5.3m (3.3 - 18ft.)
Yellow mark: 0.8 - 2.7m (2.7 - 9 ft.)

Bounce Flash: Flash head tilts from 0° to 90°; turning flash head up automatically switches on sub-unit, with bounce flash always working as a two-tube system.

Power Source: Four AA-size (penlight) batteries; compatible with nickel-cadmium batteries.

Film Speeds: ASA 25 - ASA 400 (15 - 27 DIN); film speed to be set manually on flash unit.

FUJICA AUTO STROBO AZ SPECIFICATIONS

Type: Electronic flash with series circuit for automatic light control.

Camera Fitting: Special contact for clip-on mounting with provision for locking.

Guide Number: 17 (ASA 100-meter)

Light Angle: 42° vertically and 59° horizontally; provides coverage for 35mm format with 35mm lens.

Recycling Time: 7 sec. with AM-3 (alkali-manganese) batteries.

Number of Flashes: 300 with AM-3 (alkali-manganese) batteries.

Light Quality: Daylight

Film Speed: ASA 25 - 800; film speed is automatically sensed and flash output adjusted accordingly.

Power Source: Four penlight batteries.

FUJICA PHOTO RECORSER SPECIFICATIONS

Dimensions (H × D × W): 15 × 49 × 105mm. (19/32 × 1-59/64 × 4-9/64 in.)

Memory Plate Area: 40 × 14mm. (1-37/64 × 35/64 in.)

Film Recording Area: 8 × 2.8mm (5/16 × 1/8 in.) (1/5 of memory plate area).

Film Recording Position: Lower lefthand corner (approx. 3mm (1/8 in.) from frame lines).

Memory Plate Type: Erasable memory plate (to be replaced with new plate at appropriate intervals).

Power Source: Two AAA-size (alkaline-manganese) batteries.

The above specifications and minor outward features are subject to alteration without notice to permit improvements and modifications to be made, when called for, without delay or inconvenience.

THE FUJICA X SYSTEM

Some people just aren't satisfied with a camera and lens. They want a system that allows unhampered potential. And that's why the Fujica-X system was created. Besides the accessories listed above, there are the Fujica Mount Adapter X-S, Auto Bellows X, Auto Extension Tubes X25 and X50, Reverse Adapter X, Microscope Adapter X, Slide Copier X, Macrocin-copy X and others.



FUJICA AX-5 and FUJICA AX-3

Also part of the system are the top-of-the-line Fujica AX-5 with five different AE modes: shutter-speed priority, aperture-priority, programmed, stopped-down and electronic flash. Plus fully metered manual. A camera that handles any situation with ease. There's also the quality Fujica AX-3 with aperture-priority AE and fully metered manual. Both feature a wide range of other capabilities such as dual exposure compensation, electronic self-timer and multiple exposure.



Trio of High Quality Fuji Color Films



FUJICOLOR F-II 400

(for color prints)
ASA400/27DIN
(Daylight type)



FUJICOLOR F-II

(for color prints)
ASA100/21DIN
(Daylight type)



FUJICHROME 100

(for color slides)
ASA100/21DIN
(Daylight type)

FUJI FILM

FUJI PHOTO FILM CO., LTD.
26-30, Nishiazabu 2-chome, Minato-ku, Tokyo 106, Japan

(FUJI FILM ABROAD)
IN NORTH AMERICA:
IN EUROPE:
IN SOUTH AMERICA:
IN ASIA:

NEW YORK, HONOLULU
DÜSSELDORF, LONDON
SÃO PAULO,
HONG KONG, SINGAPORE,
BANGKOK, TAIPEI, SEOUL,
MANILA

RIMROCK CAMERA CENTER
Rimrock Mall - 24th St. West
Billings, Montana 59102