

# GRAFLEX

*The CAMERA for more interesting pictures*







## GRAFLEX

the dependable camera, because of its versatility and ease of operation has justly won world-wide recognition as

*The Camera  
for  
More Interesting Pictures*



# THE GRAFLEX CAMERA

*embodies the three photographic principles  
important to good pictures*

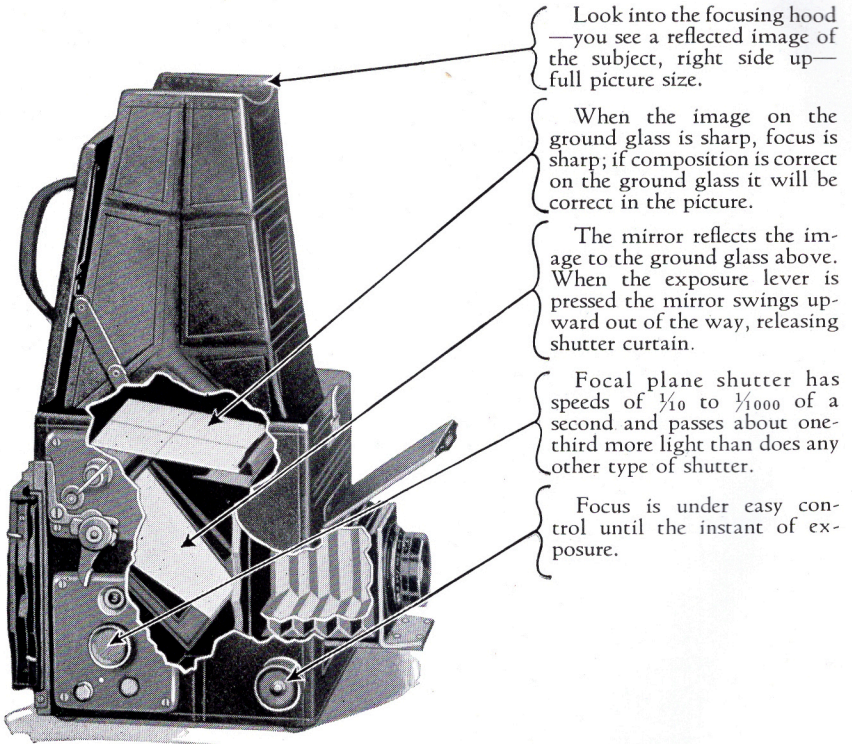
*Simplicity of Operation.* Press a catch and the hood opens to view the reflecting mirror. Turn the focusing knob, and the image appears before your eyes. Then a slight turn forward or back composes your subject, sharply, distinctly—or keeps a moving object in perfect focus.

*Certainty of Focus.* The focusing hood and reflecting mirror of the Graflex eliminate guesswork in focusing. You see on the ground glass an image of the subject, right side up, big as the film, until the instant of exposure.

*Versatility.* The focal plane shutter offers a wide range of shutter speeds—a slow  $\frac{1}{5}$ ,—time,—and from  $\frac{1}{10}$  to  $\frac{1}{1000}$ —truly a speed for every need—subjects in action, portraits, scenics, travel pictures, wild animal life, the beauties of nature. The Anastigmat lens makes fully exposed negatives possible under difficult lighting conditions.







Look into the focusing hood —you see a reflected image of the subject, right side up— full picture size.

When the image on the ground glass is sharp, focus is sharp; if composition is correct on the ground glass it will be correct in the picture.

The mirror reflects the image to the ground glass above. When the exposure lever is pressed the mirror swings upward out of the way, releasing shutter curtain.

Focal plane shutter has speeds of  $\frac{1}{10}$  to  $\frac{1}{1000}$  of a second and passes about one-third more light than does any other type of shutter.

Focus is under easy control until the instant of exposure.

**I**N the Graflex focusing hood you see what the view includes. Thus opportunity is allowed to make certain that composition provides for principles of balance, sharpness and depth.

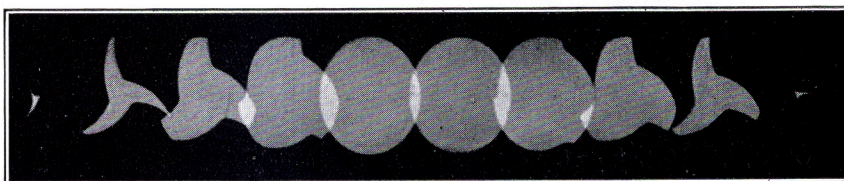
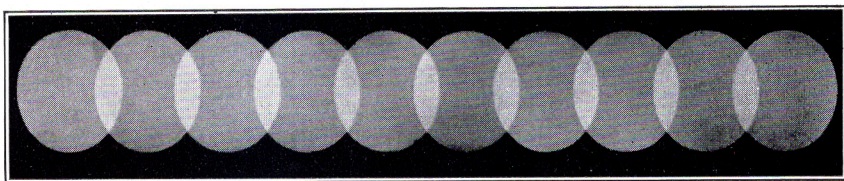
The ground glass shows you the image right side up, in full picture size, just as it will appear on the film.

With a slight turn of the focusing knob you rack the bellows in or out until arrangement, light and spacing are to your liking. You follow the subject moving toward you—or away, until the focus is sharp.

Correct composition is always under your control to the moment exposure lever is tripped.

Graflex Focal Plane Shutter is an opaque curtain that runs in front of the film. The spring can be wound to any of six tensions. In the curtain are five openings of different widths. During an exposure, one of these openings flashes across the film, admitting the rays of light that represent the picture.





The upper strip, made through a Graflex Focal Plane Shutter, shows uniform illumination. The lower strip indicates that the best between-the-lens shutter is "wide open" during the fifth and sixth flashes only.

The above strips represent actual photographs made with identical lenses during exposures of  $\frac{1}{100}$  of a second, each flash representing  $\frac{1}{1000}$  of a second.

The five openings and six tensions produce twenty-four speed combinations from  $\frac{1}{10}$  to  $\frac{1}{1000}$ ; also a slow of  $\frac{1}{2}$  and time.

Such a range of speeds gives the Graflex a versatility that extends all the way from the exciting action picture to the calm portrait study. The Graflex Shutter passes one-third more light than does any other type—a helpful advantage in securing ample shadow detail.

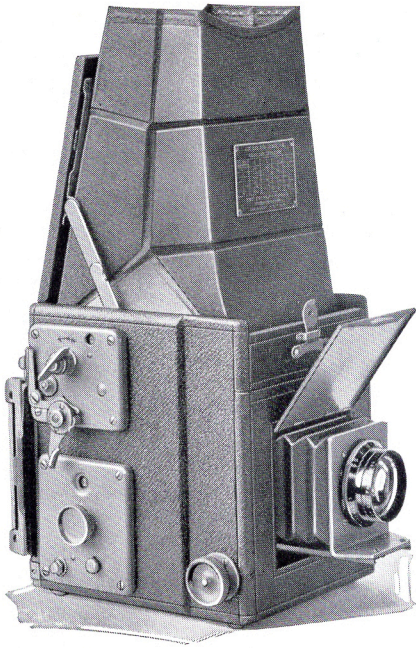
The volume of light that gets through the shutter depends on the volume brought into the camera by the lens.

Graflex Cameras are therefore equipped with the highest type Anastigmat Lenses available. These lenses admit such an abundance of light that detailed negatives are obtainable even when the subject in motion requires a shutter speed as fast as  $\frac{1}{1000}$ . At the other extreme, bright indoor subjects can often be photographed at a snapshot speed of  $\frac{1}{2}$ .

Anastigmat Lenses used on Graflex Cameras are highly corrected. They make possible those sharply defined negatives which produce magnificent enlargements.

Cased in a sturdy body of selected mahogany, accurately joined, protected by a rich morocco covering, Graflex Cameras will give long years of dependable service. Exposed metal parts are of brass, finished in a rich dull gray.





## GRAFLEX

### Series B

3¼ x 4¼—Dimensions, 5¾ x 5⅝ x 6¼. Weight, 4½ lbs. Focal length of lens, 5½ in. Closest working distance, 24¾ in.

4 x 5—Dimensions, 6¾ x 6¼ x 7¼. Weight, 6¼ lbs. Focal length of lens, 6⅝ in. Closest working distance, 25¾ in.

5 x 7—Dimensions, 9¼ x 8¼ x 8¾. Weight, 9¼ lbs. Focal length of lens, 8½ in. Closest working distance, 27¾ in.

3¼ x 4¼ · 4 x 5 · 5 x 7

**T**HE Series B Graflex represents the very latest refinements in design. The lens is mounted in a stout, rigid, metal front. The bellows is compact and moves easily and evenly on a single, wide track. Reflecting mirror, focal plane shutter and fast lens are all present.

Equipped with Kodak Anastigmat *f*.4.5 lens—the equal of any lens made for sharpness, this Graflex produces vivid prints and excellent negatives for making enlargements.

And quick! It's simplicity itself in use. Slip a catch and the hood is open. Turn the focusing knob—the lens uncovers. And you're ready to catch in fullest detail the swiftest movement . . . Or, since the lens admits so much light, a quiet moment in the shade.

"Graflex" means that the reflecting mirror, focal plane shutter and fast lens are all present.

Since the lens is installed by the men that make the camera, any Series B Graflex is a matched instrument.



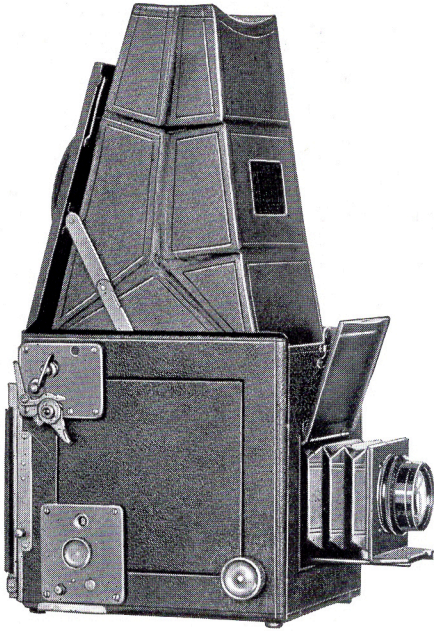
*Focal plane shutter gives twenty-four speeds from  $\frac{1}{10}$  to  $\frac{1}{1000}$ , also a slow exposure of about  $\frac{1}{2}$  and any time desired. Cut film, roll film, plates and film packs can be used in the interchangeable accessories listed below.*

PRICES

Graflex, Series B, with Film Pack Adapter and Kodak Anastigmat Lens f.4.5 . . .	$3\frac{1}{4} \times 4\frac{1}{4}$ ( $5\frac{1}{2}$ " )	\$80.00	$4 \times 5$ ( $6\frac{3}{8}$ " )	\$95.00	$5 \times 7$ ( $8\frac{1}{2}$ " )	\$160.00
<i>For other lens prices see enclosed supplement</i>						
Graflex Roll Holder . . . . .	No. 51	12.50	No. 53	13.50	No. 54	16.00
Graflex Cut Film Holder . . .		2.75		3.00		4.00
Graflex Cut Film Magazine . .		14.50		15.50		18.00
Graflex Film Pack Adapter . . .		5.50		6.50		8.50
Graflex Plate Holder . . . . .		2.75		3.00		4.00
Graflex Plate Magazine . . . . .		14.50		15.50		18.00
Kodak Pictorial Diffusion Disk	No. 31	5.00	No. 32	5.00	No. 34	6.00
Ground Glass Focusing Panel to interchange with holder . . . . .		5.50		6.00		8.00
Sole Leather Carrying Case . . .		10.50		12.50		18.00
Graflex Roll Holder Film, 6 Exposures . . . . .	No. 151	.45	No. 153	.55	No. 154	.95







## Revolving Back GRAFLEX Series B

$2\frac{1}{4} \times 3\frac{3}{4}$ —Dimensions,  $6 \times 4\frac{1}{2}$   
 $\times 6\frac{1}{4}$ . Weight, 4 lbs. Focal  
length of lens,  $5\frac{1}{2}$  in. Closest  
working distance,  $22\frac{1}{2}$  in.

$3\frac{1}{4} \times 4\frac{1}{4}$ —Dimensions,  $6\frac{3}{8} \times 5\frac{1}{2}$   
 $\times 6\frac{7}{8}$ . Weight,  $5\frac{1}{2}$  lbs. Focal  
length of lens,  $6\frac{3}{8}$  in. Closest  
working distance, 24 in.

$4 \times 5$ —Dimensions,  $8\frac{3}{8} \times 6\frac{3}{8} \times$   
 $7\frac{7}{8}$ . Weight,  $7\frac{3}{4}$  lbs. Focal  
length of lens,  $7\frac{1}{2}$  in. Closest  
working distance,  $27\frac{1}{2}$  in.

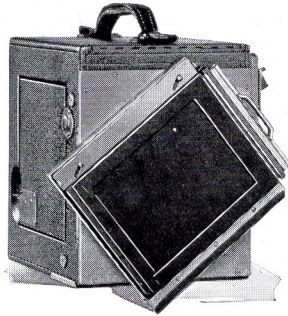
$2\frac{1}{4} \times 3\frac{1}{4}$  .  $3\frac{1}{4} \times 4\frac{1}{4}$  .  $4 \times 5$

**T**HIS Graflex offers every feature described on page 4, plus a revolving back. The revolving back simplifies the expedient of photographing a tall subject with the long way of the film placed upright. Instead of turning the camera, turn only its back and, as usual, look downward into the hood. So many pictures are properly verticals that this convenience is a valuable advantage.

Experts fit a Kodak Anastigmat *f*.4.5 into each Series B Graflex: an assurance of proper teamwork on the picture-making job.

*Focal plane shutter gives twenty-four speeds from  $\frac{1}{10}$  to  $\frac{1}{1000}$ , also a slow exposure of about  $\frac{1}{5}$  and any time desired. Cut film, roll film, plates and film packs can be used in the interchangeable accessories listed below.*





The Revolving Back works smoothly and is light-tight in any position

The Revolving Back which brings the long dimension into vertical position for all pictures, is light-tight in any position. It, too, has an ingenious and simple operation.

Removing complication, avoiding hazards of guesswork and providing safeguards against the chances of error—the major accomplishments of the Graflex have brought wide public acceptance of this camera.

Its distinctive form, and the large number in successful use have made it recognized throughout the world as the camera most to be relied upon for the making of *better pictures* under varying conditions of good and bad weather.

The Graflex is certain in its operation and certain to make *better pictures*.

PRICES

Revolving Back Graflex, <i>Series B</i> , with Film Pack Adapter and Kodak Anastigmat Lens <i>f</i> .4.5 . . . . .	2¼ x 3¼ (5½")	\$85.00	3¼ x 4¼ (6¾")	\$100.00	4 x 5 (7½")	\$120.00
<i>For other lens prices see enclosed supplement</i>						
Graflex Roll Holder . . . . .	No.50	12.50	No.51	12.50	No.53	13.50
Graflex Cut Film Holder . . . . .		2.50		2.75		3.00
Graflex Cut Film Magazine . . . . .		13.00		14.50		15.50
Graflex Film Pack Adapter . . . . .		5.50		5.50		6.50
Graflex Plate Holder . . . . .		2.50		2.75		3.00
Graflex Plate Magazine . . . . .		13.00		14.50		15.50
Kodak Pictorial Diffusion Disk Ground Glass Focusing Panel to interchange with holder . . . . .	No.31	5.00	No.32	5.00	No.33	5.00
Sole Leather Carrying Case . . . . .		9.00		12.00		15.00
Graflex Roll Holder Film, 6 Exposures . . . . .	No.150	.25	No.151	45	No.153	.55





Revolving Back  
GRAFLEX  
Series C

With  
COOKE ANASTIGMAT  
*f.2.5*

Dimensions,  $8\frac{1}{2} \times 5\frac{1}{2} \times 7\frac{1}{4}$ . Weight,  $7\frac{1}{4}$  lbs. Focal length of lens,  $6\frac{1}{2}$  in. Closest working distance, 23 in.

$3\frac{1}{4} \times 4\frac{1}{4}$

PICTURES commonly called impossible become easy through the magic of this camera. Cooke Anastigmat *f.2.5* is fast! Three times as fast as *f.4.5* and ten times as fast as *f.8*. The extra light that this lens admits lets the Series C Graflex produce detailed negatives under conditions that keep ordinary outfits idle.

In the rain or in the woods or in the house—from dawn to dusk in almost any weather—owners of the Series C get pictures that are envied and admired. Kodak Cut Film *Super Speed* behind the Cooke Anastigmat *f.2.5* often permits snapshots of subjects that usually take *time*.

A solid front holds the lens rigid. The hinged cover with side wings serves, when open, as a shield against the sun.

Exact focus is easy, thanks to the reflecting mirror. If the image looks sharp in the hood, it will surely look sharp in the picture.

Photographers who must bring in good results regardless of difficulties can safely rely on this camera. Its *extra* ability added to the usual wide scope of a Graflex equips the Series C for a sensational output of pictures.



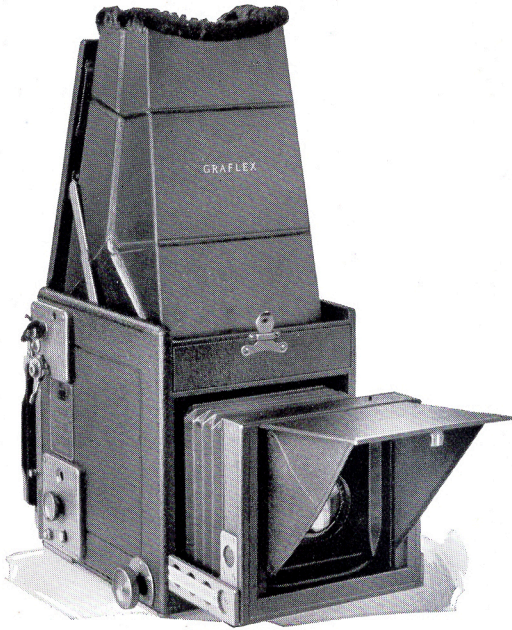


*Focal plane shutter gives twenty-four speeds from  $\frac{1}{10}$  to  $\frac{1}{1000}$ , also a slow exposure of about  $\frac{1}{8}$  and any time desired. Cut film, roll film, plates and film packs can be used in the interchangeable accessories listed below.*

PRICES

Revolving Back Graflex, Series C, with Cut Film Holder and Cooke Anastigmat f.2.5, 6½" Lens . . . . .	3¼ x 4¼	
	<del>\$260.00</del>	\$195.00
<i>For other lens prices see enclosed supplement</i>		
Graflex Roll Holder, No. 51 . . . . .	12.50	
Graflex Cut Film Holder . . . . .	2.75	
Graflex Cut Film Magazine . . . . .	14.50	
Graflex Film Pack Adapter . . . . .	5.50	
Graflex Plate Holder . . . . .	2.75	
Graflex Plate Magazine . . . . .	14.50	
Ground Glass Focusing Panel to interchange with holder . . . . .	5.50	
Sole Leather Carrying Case . . . . .	13.00	
Graflex Roll Holder Film, 6 Exposures No. 151 . . . . .	.45	





## Revolving Back GRAFLEX Series D

$3\frac{1}{4} \times 4\frac{1}{4}$ —Dimensions,  $6\frac{3}{4} \times 5\frac{1}{2} \times 6\frac{7}{8}$ . Weight, 4 lbs. 8 oz. Bellows capacity,  $8\frac{1}{2}$  in. Lens board,  $3\frac{1}{4} \times 3\frac{1}{4}$  in. Minimum focus of lenses accommodated,  $5\frac{3}{4}$  in.

$4 \times 5$ —Dimensions,  $8\frac{3}{8} \times 6\frac{3}{8} \times 7\frac{7}{8}$ . Weight, 6 lbs. 12 oz. Bellows capacity, 12 in. Lens board,  $3\frac{3}{4} \times 3\frac{3}{4}$  in. Minimum focus of lenses accommodated, 7 in.

$3\frac{1}{4} \times 4\frac{1}{4}$  .  $4 \times 5$

**A** TRULY "all purpose" Graflex, designed for the varied requirements of general photography.

Unlike the Series B, Revolving Back Series B, and Revolving Back Series C Models, which are listed with single exclusive lens equipment, the Revolving Back Series D is listed with a wide selection of lenses of varying speeds.

One of the principal features of this model is the removable wooden lens board which permits the use of different lenses interchangeably. This feature also permits listing the camera without lens equipment, an important item to the purchaser who already possesses suitable lenses.

Besides incorporating all of the distinctive Graflex features, the Revolving Back Series D offers additional appointments including Automatic lens shield.

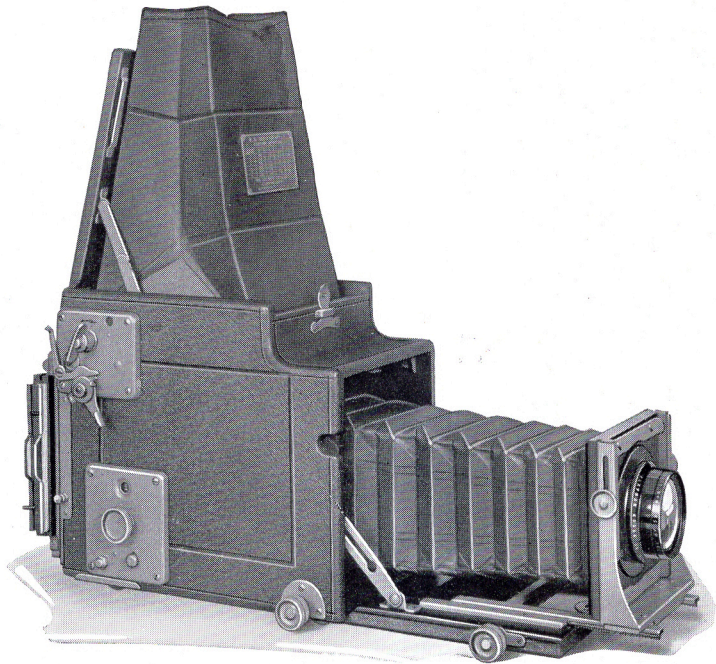
*Focal plane shutter gives twenty-four speeds from  $\frac{1}{10}$  to  $\frac{1}{1000}$ , also a slow exposure of about  $\frac{1}{8}$  and any time desired. Cut film, roll film, plates and film packs can be used in the interchangeable accessories listed below.*

PRICES

Revolving Back Series D Graflex without lens, including Film Pack Adapter. . . . .	$3\frac{1}{4} \times 4\frac{1}{4}$ \$ 90.00	$4 \times 5$ \$100.00
With Kodak Anastigmat f.4.5 . . . . .	( $6\frac{3}{8}$ " ) 126.00	( $7\frac{1}{2}$ " ) 150.00
<i>For other lens prices see enclosed supplement</i>		
Graflex Roll Holder . . . . .	(51) 12.50	(53) 13.50
Graflex Cut Film Holder . . . . .	2.75	3.00
Graflex Cut Film Magazine . . . . .	14.50	15.50
Graflex Film Pack Adapter . . . . .	5.50	6.50
Graflex Plate Holder . . . . .	2.75	3.00
Graflex Plate Magazine . . . . .	14.50	15.50
Ground Glass Focusing Panel to interchange with Holder . . . . .	5.50	6.00
Sole Leather Carrying Case . . . . .	12.00	15.00
Extra Lens Board . . . . .	.75	.90
Graflex Roll Holder Film, 6 Exposures . . . .	No. 151 .45	No. 153 .55







3¼ x 4¼—Dimensions, 8½ x 5½ x 7. Bellows capacity, 15½ in. Weight, 5¾ lbs. Size of lens board, 3¼ x 3¼ in. Minimum focus of lenses accommodated, 7½ in.

4 x 5—Dimensions, 10 x 6¼ x 8. Bellows capacity, 18½ in. Weight, 7 lbs. Size of lens board, 3¾ x 3¾ in. Minimum focus of lenses accommodated, 9 in.

## *Revolving Back* AUTO GRAFLEX

TRUE-SIZED close-ups are often essential: notebook data are minimized when the negative represents the blossom, jewel, specimen or design in actual dimension. Big images of distant objects are desirable: wild life and sports events must usually be viewed from afar. Both extremes lie within the province of this Graflex because generous bellows draw permits (1) work at short range and (2) the use of a long-focus lens such as the single element of a convertible anastigmat.

As aids to proper composition, a revolving back facilitates vertical pictures of tall subjects and a rising front controls foregrounds. A focusing panel is provided for the rear so that the image can be measured or examined under a magnifier.

Such conveniences combined with the reflecting mirror, focal plane shutter and fast lens endear this camera to nature lovers, scientists and other exacting photographers.

Amateurs and professionals alike respect the Auto Graflex and admire its versatility.

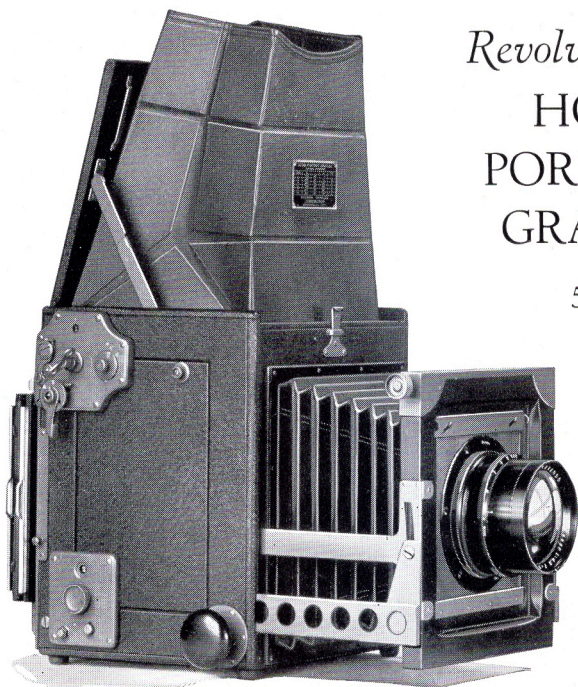
*Focal plane shutter gives twenty-four speeds from  $\frac{1}{10}$  to  $\frac{1}{1000}$ , also a slow exposure of about  $\frac{1}{2}$  and any time desired. Cut film, roll film, plates and film packs can be used in the interchangeable accessories listed below.*

PRICES

Revolving Back Auto Graflex, without lens, including focusing panel and Film Pack Adapter . . . . .	$3\frac{1}{4} \times 4\frac{1}{4}$		$4 \times 5$
	\$108.00		\$124.00
With Kodak Anastigmat Lens <i>f</i> .4.5 . . . . .	( $7\frac{1}{2}$ " )	158.00	(10" ) 232.00
<b><i>For other lens prices see enclosed supplement</i></b>			
Graflex Roll Holder . . . . .	No. 51	12.50	No. 53 13.50
Graflex Cut Film Holder . . . . .		2.75	3.00
Graflex Cut Film Magazine . . . . .		14.50	15.50
Graflex Film Pack Adapter . . . . .		5.50	6.50
Graflex Plate Holder . . . . .		2.75	3.00
Graflex Plate Magazine . . . . .		14.50	15.50
Sole Leather Carrying Case . . . . .		13.50	16.00
Extra Lens Board . . . . .		.75	.90
Graflex Roll Holder Film—6 Exposures . . .	No. 151	.45	No. 153 .55







*Revolving Back*  
HOME  
PORTRAIT  
GRAFLEX

5 x 7

Dimensions,  $9\frac{3}{4} \times 9 \times 10\frac{1}{2}$  in. Focal capacity, 15 in. Weight with lens,  $16\frac{3}{4}$  lbs. Size of lens board,  $5 \times 5$  in. Minimum focus of lenses accommodated, 10 in. Focal plane shutter gives twenty-four speeds from 1 to  $\frac{1}{500}$  and any time desired.

**N**ATURALNESS in the portrait is easily attained with this camera. Watch the composition in the hood; raise, lower or swing the front; keep the focus under fingertip control. And at the prize moment record the spirited expression that gives a portrait such charm.

So definitely helpful are the special features of this Graflex that they enable the user to grasp countless opportunities for making home portraits and indoor story-telling pictures that only a hand-held instrument can get. Without shifting furniture for tripod space, the operator moves from viewpoint to viewpoint, always ready for the instant at which he sees in the hood the effect that he seeks.

With the Kodak Anastigmat *f.4.5* well open and *Super Speed* film, a slow automatic exposure often does instead of *time*. Stony stillness isn't necessary—a special advantage when the subject is a lively youngster. The lens of twelve-inch focal length encourages good perspective.

The camera needn't be close to get a big image on the 5 x 7 area.

The Home Portrait Graflex is quickly adaptable to the varied needs of home portraiture. Other work also falls within its field but first of all it aims to make portraits that glow with personality.

PRICES

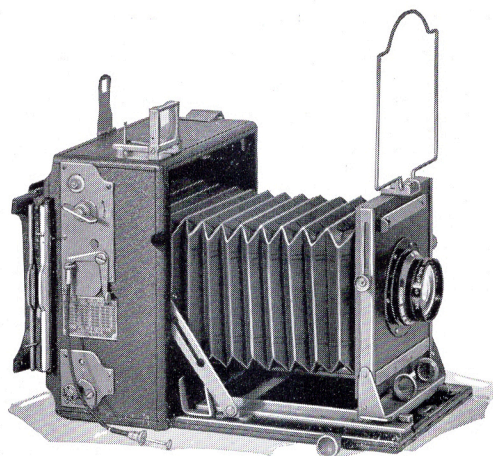
Home Portrait Graflex, without lens, including focusing panel and one 5 x 7 cut film holder (plate holder optional) . . . . .	\$225.00
With Kodak Anastigmat f.4.5, 12" Lens . . . . .	375.00

*For other lens prices see enclosed supplement*

Graflex Roll Holder, No. 54 . . . . .	\$16.00	Graflex Plate Magazine . . . . .	18.00
Graflex Cut Film Holder . . . . .	4.00	Sole Leather Carrying Case . . . . .	26.50
Graflex Cut Film Magazine . . . . .	18.00	Extra Lens Board . . . . .	1.50
Graflex Film Pack Adapter . . . . .	8.50	Graflex Roll Holder Film—6 Exposures . . . . .	No. 154 .95
Graflex Plate Holder . . . . .	4.00		







## SPEED GRAPHIC

4 x 5

Dimensions,  $6\frac{1}{2} \times 3\frac{5}{8} \times 7\frac{1}{4}$ . Weight,  $3\frac{1}{2}$  lbs.  
Focal capacity,  $13\frac{1}{2}$  in. Size of lens board, 4 x 4 in.

**T**HIS camera contains all of the regular Graflex features, with the exception of the Focusing Hood. Focus is accomplished in two ways; by a distance scale attached to the extension bed or through the rear ground glass.

The large 4 x 4 lens board will accommodate ultra speed lenses as well as between lens shutter when the user desires this type as an auxiliary to the Focal Plane Shutter.

Regularly adapted for Graphic Plate or Film Holders and Film Pack Adapter, the Speed Graphic is also obtainable with special back to accommodate interchangeable Graflex Plate or Film Holders, Film Pack Adapters, Cut Film or Plate Magazines, and Roll Film Holders.

In appearance, compactness, and in ability the Speed Graphic is the finest of folding cameras. Press photographers praise it—proof positive that it is a camera equal to a wide variety of difficult shots.

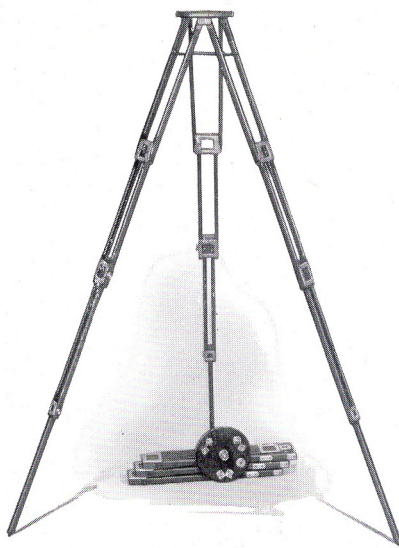
*Focal plane shutter gives twenty-four speeds from  $\frac{1}{10}$  to  $\frac{1}{1000}$  and any time desired. A cut film holder, a film pack adapter or a plate holder can be used on the regular Graphic back. When fitted with the Graflex back, however, this camera accommodates cut film, roll film, film packs and plates in the interchangeable Graflex accessories listed below.*

#### PRICES

Speed Graphic, without lens, including one cut film holder (plate holder optional) . . . . .	4 x 5	\$ 75.00
With Kodak Anastigmat <i>f</i> .4.5, 6 $\frac{3}{8}$ " Lens . . . . .		111.00
With Kodak Anastigmat <i>f</i> .4.5, 6 $\frac{3}{8}$ " Lens in Compound Shutter . . . . .		131.00
*Speed Graphic (Graflex back) without lens or holder . . . . .		88.00
*With Kodak Anastigmat <i>f</i> .4.5, 6 $\frac{3}{8}$ " Lens, without holder . . . . .		124.00
*With Kodak Anastigmat <i>f</i> .4.5, 6 $\frac{3}{8}$ " Lens in Compound Shutter, without holder . . . . .		144.00
<i>For other lens prices see enclosed supplement</i>		
Graphic Plate Holder . . . . .		2.50
Graphic Cut Film Holder . . . . .		2.50
Film Pack Adapter (for use on Speed Graphic with regular back) . . . . .		2.00
Graflex Roll Holder, No. 53 . . . . .		13.50
Graflex Cut Film Holder . . . . .		3.00
Graflex Cut Film Magazine . . . . .		15.50
Graflex Film Pack Adapter . . . . .		6.50
Graflex Plate Holder . . . . .		3.00
Graflex Plate Magazine . . . . .		15.50
Leather Case for camera and 6 holders . . . . .		12.50
Kodak Pictorial Diffusion Disk, No. 32 . . . . .		5.00
Extra Lens Board . . . . .		1.50
Graflex Roll Holder Film Cartridge, 6 exposures, No. 153 . . . . .		.55

\*When the Graflex type of back is desired, please specify, "Speed Graphic with Graflex back."





## CROWN TRIPOD

**S**TEADINESS and strength are required of a tripod. Even a heavy camera cannot wiggle the rigid, staunch Crown. The wood is selected cherry, oil soaked and then shellacked to make it weatherproof.

The head of this tripod is large and substantial. Near its edge is a second screw socket so that the weight of a camera can be properly balanced when the bellows is extended.

Expansion brackets keep the legs firmly attached when in use; binding screws cannot be lost; joints fit snugly.

A well-designed, and sturdily built tripod.

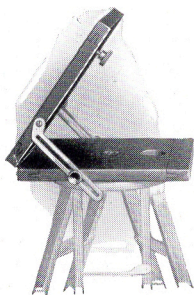
DETAILS				
Length Closed	Length Extended	Weight	Diameter of Top	Weight of Camera Carried
No. 1—16 in.	4 ft., 4 in.	36 oz.	4 in.	6 lbs.
No. 2—17 in.	4 ft., 8 in.	65 oz.	6 in.	9 lbs.
No. 4—20 in.	5 ft., 6 in.	90 oz.	6½ in.	18 lbs.
Crown Tripod . . . . .	No. 1, \$10.00	No. 2, \$11.00	No. 4, \$13.50	

## CARRYING CASE FOR CROWN TRIPODS

A sole leather case consisting of a long compartment for the Crown tripod legs, and a smaller compartment to hold the tripod top.

### PRICES

No. 1, for Tripod No. 1 . . .	\$7.50	No. 2, for Tripod No. 2 . . .	\$8.50
No. 4, for Tripod No. 4 . . .	\$10.00		

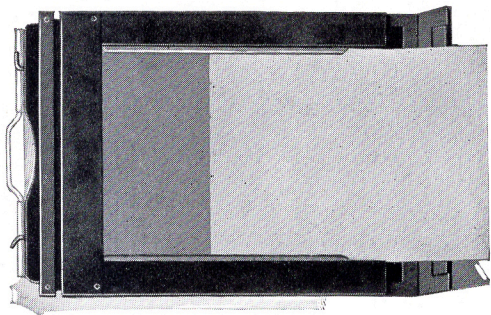


## CROWN TILTING TRIPOD TOP

With this device in use on a Crown Tripod, the camera can be pointed upward or downward, at any angle from horizontal to vertical, without adjusting the tripod legs.

### PRICES

No. 2 Crown Tilting Tripod Top, for 6 in. head . .	\$4.00
No. 4 Crown Tilting Tripod Top, for 6½ in. head . .	4.50



## GRAFLEX CUT FILM HOLDER

**T**HROUGH this device, the advantages of making negatives on cut film become available to the owner of any Graflex except the Autographic models.

When the dark slide is withdrawn, the end of the frame opens on a hinge as shown in the above illustration. The film slips in or out smoothly, making loading and unloading easy indeed. And the film stays flat, held in narrow channels, the sensitized surface forming a uniform focal plane.

Fits any Graflex except the Autographic models and can remain attached, prepared, while the camera is in its regular case.

### PRICES

	2¼ x 3¼	3¼ x 4¼	4 x 5	5 x 7
Graflex Cut Film Holder . . . . .	\$2.50	\$2.75	\$3.00	\$4.00

## GRAFLEX PLATE HOLDER

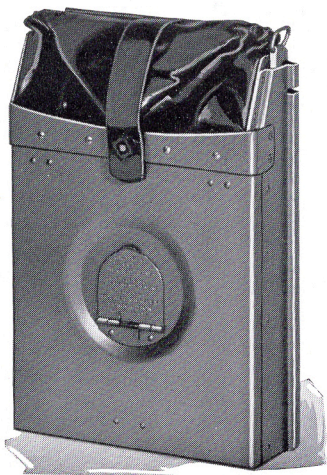
Prices given for Graflex Cut Film Holders apply also to the corresponding sizes of Graflex Plate Holders.

## GRAPHIC CUT FILM HOLDER AND GRAPHIC PLATE HOLDER

### PRICES

3¼ x 4¼ . . . . .	\$2.50	4 x 5 . . . . .	\$2.50
-------------------	--------	-----------------	--------





## GRAFLEX CUT FILM MAGAZINE

THIS magazine carries a dozen cut films at one loading, ready for use in quick succession, each in a metal septum. By means of a sliding rod, the septum containing an exposed film is drawn into a light-tight leather bag (shown folded) and is re-inserted behind the films that have previously been used.

Each septum bears a numeral so that the number of exposures made since loading can be quickly told by looking through the ruby window that lies under-

neath the small spring flap on the back of the magazine.

The Graflex Cut Film Magazine can be detached from the camera at any time and one or more films removed in a dark room without waiting for all twelve to be exposed.

To more satisfactorily handle the new high speed emulsions which are finding increasing use in the commercial sizes, the 4 x 5 and 5 x 7 Cut Film and Plate Magazine Changing Bag is designed so as to prevent abrasions during manipulation.

### DETAILS

	2¼x3¼	3¼x4¼	3¼x5½	4x5	5x7
Dimensions	5½x3¼x1¾	6¼x4¼x1¾	7¾x3¾x1¾	7x5x1½	9¼x6¼x1¾
Weight loaded.	12 oz.	18 oz.	1½ lbs.	1½ lbs.	2½ lbs.

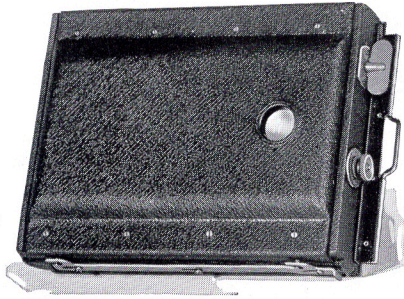
### PRICES

	2¼ x 3¼	3¼ x 4¼	3¼ x 5½	4 x 5	5 x 7
Graflex Cut Film Magazine	\$13.00	\$14.50	\$15.50	\$16.50	\$19.00

(The 4x5 size only can be supplied to hold 18 cut films at price of \$20.50)

## GRAFLEX PLATE MAGAZINE

This attachment is similar to the Graflex Cut Film Magazine, but is necessarily bulkier, and heavier when loaded. Same prices as for the Graflex Cut Film Magazine.



## GRAFLEX ROLL HOLDER

**R**OLL FILM loads in daylight and, with a Kodak Film Tank, develops in daylight. The roll holder makes these advantages possible with any Graflex. After inserting the dark slide, the holder can be detached and re-attached between exposures but it need not come off when the camera goes into the case.

Graflex Roll Holders are numbered in accordance with the corresponding sizes of Graflex Roll Holder Film Cartridge.

### PRICES, GRAFLEX ROLL HOLDERS

$3\frac{1}{4} \times 2\frac{1}{4}$ , No. 50, \$12.50— $4\frac{1}{4} \times 3\frac{1}{4}$ , No. 51, \$12.50— $5\frac{1}{2} \times 3\frac{1}{4}$ , No. 52, \$13.50  
 $5 \times 4$ , No. 53, \$13.50— $7 \times 5$ , No. 54, \$16.00

*Graflex Roll Holders fit only Graflex Cameras  
 and Graphic Cameras with Graflex backs*

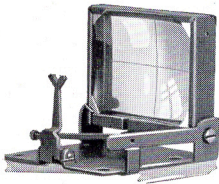
## GRAFLEX ROLL HOLDER FILM CARTRIDGES

### 6 EXPOSURES, FOR GRAFLEX ROLL HOLDERS

$3\frac{1}{4} \times 2\frac{1}{4}$ , No. 150, \$ .25— $4\frac{1}{4} \times 3\frac{1}{4}$ , No. 151, \$ .45— $5\frac{1}{2} \times 3\frac{1}{4}$ , No. 152, \$ .55  
 $5 \times 4$ , No. 153, \$ .55— $7 \times 5$ , No. 154, \$ .95

*To avoid error, please order film by number*

## GRAPHIC SIGHT FINDER

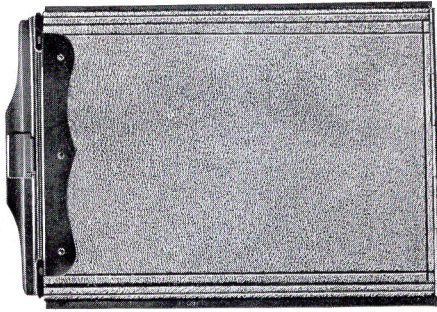


**A** DIRECT-VISION, folding sight finder, to be attached to the top of the camera. The subject is centered on the image area when the intersection of the lines engraved on the finder lens is in direct aim with the notch in the top of the vertical sight bar.

### PRICES

	$3\frac{1}{4} \times 4\frac{1}{4}$	$3\frac{1}{4} \times 5\frac{1}{2}$	$4 \times 5$	$5 \times 7$
Graphic Sight Finder . . . . .	\$4.00	\$4.50	\$4.50	\$5.25





## GRAFLEX FILM PACK ADAPTER

**K**ODAK Film Packs, daylight loading, are usable in any Graflex except the Autographic Models, with the aid of this attachment.

### PRICES

	2¼ x 3¼	3¼ x 4¼	3¼ x 5½	4 x 5	5 x 7
Graflex Film Pack Adapter . . .	\$5.50	\$5.50	\$6.50	\$6.50	\$8.50

## KODAK FILM PACKS

Each pack contains twelve non-curling, non-halation, properly orthochromatic films. Single films can be taken from the pack in a darkroom without waiting until all are exposed.

After each picture a paper tab is withdrawn and torn off, uncovering an unused film, ready for the next subject.

### PRICES

2¼ x 3¼	3¼ x 4¼	3¼ x 5½	4 x 5	5 x 7
No. 520, \$ .50	No. 518, \$ .90	No. 522, \$1.10	No. 523, \$1.10	No. 515, \$1.90

## KODAK CUT FILM

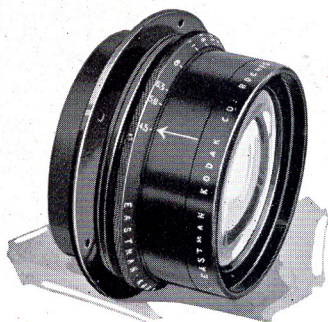
Kodak Cut Film is supplied in two emulsions, Regular Speed and Super Speed.

Super Speed is the film to use when the subject requires a short exposure or when the light is difficult.

Kodak Cut Film can be used in a Cut Film Holder, the Graflex Cut Film Magazine, or, with Sheaths, in any Plate Holder.

### PRICES

	2¼x3¼	3¼x4¼	3¼x5½	4x5	5x7
Kodak Cut Film <i>Regular Speed</i> , doz. . .	\$ .45	\$ .65	\$ .90	\$ .90	\$1.45
Kodak Cut Film <i>Super Speed</i> , doz. . . .	.45	.65	.90	.90	1.45



## KODAK ANASTIGMAT

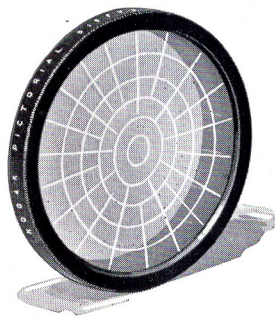
*f.* 4.5

**K**ODAK Anastigmat *f.*4.5 is designed in the Kodak laboratories and executed in the Kodak workrooms. It is tested by such standards of optical excellence that for definition and for flatness of field it is the peer of any lens made anywhere at any price.

Fully open, the Kodak Anastigmat *f.*4.5 cuts cleanly, to the very edge of the film. Such sharpness assures sparkling contact prints and rich enlargements. Toward detail in the picture, the Kodak Anastigmat at *f.*4.5 admits an abundance of light that makes well-timed negatives easy to get, even in difficult circumstances.

Each Kodak Anastigmat *f.*4.5 is mounted complete with an iris diaphragm controlled by a milled ring on which the *f* markings are engraved.

No.	Size of Film covered with Stop <i>f.</i> 4.5 in Inches	Equivalent Focus in Inches	Price of Lens in barrel with Iris Diaphragm
30	2¼ x 3¼	4¾	\$ 31.00
31	3¼ x 4¼	5½	33.75
32	4 x 5	6¾	37.00
33	5 x 7	7½	50.00
34	5 x 8	8½	62.50
35	6½ x 8½	10	108.00
36	8 x 10	12	150.00



## KODAK PICTORIAL DIFFUSION DISK

**S**OFTNESS of line adds charm to almost any picture, particularly to portraits and landscapes. The Kodak Pictorial Diffusion Disk, slipped over the lens, gives a delightful glow without the obscurity that is found in an out-of-focus image. Detail is definite, but gentle.

Kodak Pictorial Diffusion Disks, now obtainable for use on four Kodak Anastigmats *f.*4.5, bear the numerical designations of the lenses that they fit. Please order by number.

### PRICES, KODAK PICTORIAL DIFFUSION DISK

No. 31, \$5.00    No. 32, \$5.00    No. 33, \$5.00    No. 34, \$6.00  
 Inside diameter of flange: No. 31, 1½"; No. 32, 1¾"; No. 33, 2"; No. 34, 2¾"



The cameras and accessories herein described will be found on sale wherever camera equipment of highest quality is sold.

Dealers will gladly demonstrate the range, versatility and simplicity of operation of Graflex and Graphic Cameras.

To assist Graflex owners in securing best results our Service Department at Rochester will gladly furnish helpful advice upon request.

Prices are subject to change without notice.

FOLMER GRAFLEX CORPORATION  
Rochester, N. Y.

*Makers of  
Precision Camera Equipment*

*GRAFLEX AND GRAPHIC CAMERAS*

The cameras for more interesting pictures.

*STUDIO CAMERAS AND EQUIPMENT*

A camera for every professional need.

*AERO CAMERAS—K-5 AND K-10*

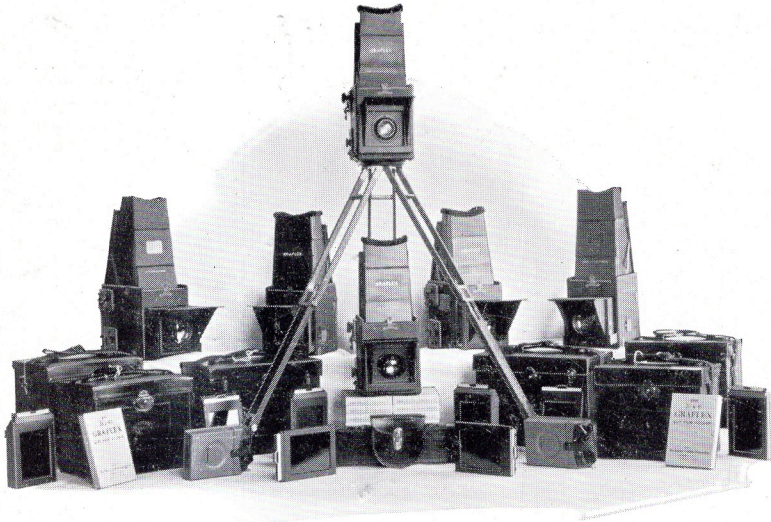
Aero Cameras for every type of oblique and vertical aerial photography.

*PHOTORECORD*

A Camera unit for making standardized identification pictures. Used by Police and Correctional Institutions as well as employers of large groups of employees.

*FINGER PRINT CAMERA*

A practical and efficient portable camera for producing accurate photographic records of finger prints, signatures, patterns, etc.



*Byrd Antarctic Expedition Equipment*

Graflex Cameras  
were the *official* cameras  
of the Byrd Antarctic Expedition  
for taking still pictures

•••••

Nine out of ten  
of the thousands of  
*official* still pictures  
were taken with  
Graflex Cameras

•••••

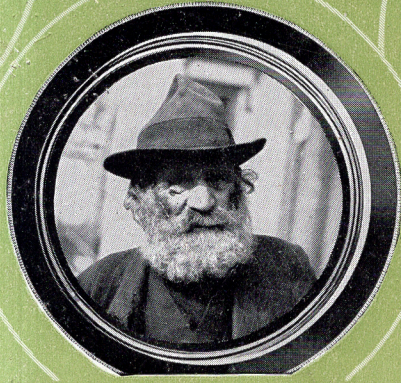
Graflex Cameras justified their selection—  
even in the intense Antarctic cold  
not a single Graflex froze up





# GRAFLEX

*The CAMERA for more interesting pictures*



EASTMAN KODAK COMPANY,  
ROCHESTER, N. Y.





*Supplement*  
*Graflex Catalog*



LENSES

FOLMER GRAFLEX CORPORATION

ROCHESTER, N. Y.



# SUPPLEMENT

## FOLMER GRAFLEX CATALOG



PHOTOGRAPHIC requirements bear strongly upon the selection of lenses. The speed, the focal length, the depth of focus, the covering power, all are to be considered in seeking a result.

Graflex cameras are manufactured in several Series with a view to satisfying varying lens requirements. The association of certain types of lenses with certain Series of the Graflex is the result of years of application of scientific principles by thoroughly trained experts in Graflex manufacture.

Diaphragm speeds should be given utmost consideration in the selection of a lens. Purchasers should seek our advice or that of experienced dealers that a wrong selection may be avoided.

In ordinary photographic practices a lens speed of  $f.4.5$  assures satisfactory results not only in the full range of still subjects but in pictures of speed and action as well. Depth of focus with this lens is superior to that secured in faster lenses.

Graflex Series B and Graflex Revolving Back Series B are so equipped, extreme care being used in the factory selection of the units. The amateur may look for satisfactory results under all normal conditions with these cameras.

The faster lenses,  $f.2.5$  and  $f.3.5$  are recommended for use where snap shots must be had under unfavorable lighting conditions, where soft focus effects are desired and for subjects where depth of focus is not primarily sought.  $F.3.5$  lenses offer a medium between  $f.2.5$  and  $f.4.5$ , they being half as fast as the  $f.2.5$  and twice as fast as  $f.4.5$ . Also the depth of focus is greater than that obtained with the  $f.2.5$  but not equal to that obtained with the  $f.4.5$ .

Graflex Revolving Back Series C and Series D have been scientifically designed to accommodate lenses with extremely fast diaphragm speed.

Graflex Series C is built with the Cooke  $f.2.5$  lens only and affords extreme speeds.

Graflex Series D is built with  $f.3.5$  and  $f.4.5$  lenses. The Series D Revolving Back Graflex constitutes the outstanding Graflex for all around purposes.

Telephoto lenses are designed for use where closeups are unattainable such as in nature and wild animal photography or where large size images of distant subjects are desired. In such cases a telephoto lens with twice the focal length of the regular lens permits the placing of the camera at twice the distance from the object without any loss in the size of the image, or, at the same distance the image is twice the size. Telephoto lenses afford a much sought auxiliary and broaden the scope of the use of the Graflex camera. They are supplied as additional equipment and the prices shown are for the telephoto lens alone.

Convertible Anastigmat lenses also add to the range of possibility with the Graflex. They offer the opportunity of using single elements as well as the doublet.

The Revolving Back Auto Graflex has been developed for the use of convertible lenses and affords extreme satisfaction when used therewith.

The Speed Graphic is, as its name implies, a camera intended for speed work. The Speed Graphic is a favorite with news photographers generally, and is for use under most varying conditions. It satisfies the element of haste in picture taking. If desired it is equipped with a between-the-lens shutter as an auxiliary to the Graflex Focal Plane Shutter. Through this combination the twenty-four speeds of the Graflex Focal Plane Shutter are augmented by slower instantaneous shutter speeds up to a full second. Lenses of  $f.3.5$  and  $f.4.5$ , depending upon the need of the user, are normally used in connection therewith.

The Graflex camera has attained its reputation as the most efficient of all "still" cameras through the scientific application of time-proven principles of optics by Graflex experts in the Graflex factory. The complete association of camera and lens by these experts is of utmost importance, requiring as it does, knowledge of the art together with extreme skill of workmanship and minute inspection. In their hands the photographic unit of Graflex and lens is made a unit of perfection.

Prices of Graflex Cameras with some of the lenses most used in original assembly are here listed.



## GRAFLEX SERIES B

	$3\frac{1}{4} \times 4\frac{1}{4}$		$4 \times 5$		$5 \times 7$	
	Focal Length	Price	Focal Length	Price	Focal Length	Price
With <i>f.4.5</i> Kodak Anastigmat Lens and Film Pack Adapter . . . . .	5½"	\$ 80.00	6¾"	\$ 95.00	8½"	\$160.00
<i>F.4.5</i> Dallmeyer Telephoto Lens (cost additional) . . . . .			12"	105.00	17"	158.00
<i>F.5.6</i> Dallmeyer Telephoto Lens (cost additional) . . . . .	11"	95.00	12"	102.00	17"	167.00
<i>F.5.6</i> Cooke Telephoto Lens (cost additional) . . . . .	11"	107.50	12½"	115.00	15"	148.00
<i>F.6.3</i> Voiglander Telephoto Lens (cost additional) . . . . .	10"	52.50	11½"	60.00		

## REVOLVING BACK GRAFLEX SERIES B

	$2\frac{1}{4} \times 3\frac{1}{4}$		$3\frac{1}{4} \times 4\frac{1}{4}$		$4 \times 5$	
	Focal Length	Price	Focal Length	Price	Focal Length	Price
With <i>f.4.5</i> Kodak Anastigmat Lens and Film Pack Adapter . . . . .	5½"	\$ 85.00	6¾"	\$100.00	7½"	\$120.00
<i>F.4.5</i> Dallmeyer Telephoto Lens (cost additional) . . . . .			12"	105.00	14"	118.00
<i>F.5.6</i> Dallmeyer Telephoto Lens (cost additional) . . . . .	11"	95.00	12"	102.00	14"	124.00
<i>F.5.6</i> Cooke Telephoto Lens (cost additional) . . . . .	11"	107.50	12½"	115.00	15"	148.00
<i>F.6.3</i> Voiglander Telephoto Lens (cost additional) . . . . .	10"	52.50	11½"	60.00		

## REVOLVING BACK GRAFLEX SERIES C

	$3\frac{1}{4} \times 4\frac{1}{4}$	
	Focal Length	Price
With <i>f.2.5</i> Cooke Anastigmat Lens and Cut Film Holder . . . . .	6½"	\$195.00
<i>F.4.5</i> Dallmeyer Telephoto Lens (cost additional) . . . . .	14"	118.00
<i>F.5.6</i> Dallmeyer Telephoto Lens (cost additional) . . . . .	14"	124.00
<i>F.5.6</i> Cooke Telephoto Lens (cost additional) . . . . .	12½"	115.00
<i>F.5.6</i> Cooke Telephoto Lens (cost additional) . . . . .	15"	148.00

## REVOLVING BACK GRAFLEX SERIES D

	$3\frac{1}{4} \times 4\frac{1}{4}$		$4 \times 5$	
	Focal Length	Price	Focal Length	Price
Without Lens, including Film Pack Adapter . . . . .		\$ 90.00		\$100.00
With <i>f.4.5</i> Kodak Anastigmat Lens . . . . .	6¾"	126.00	7½"	150.00
With <i>f.4.5</i> Bausch & Lomb Tessar Lens . . . . .	6 <sup>13</sup> / <sub>32</sub> "	129.00	7 <sup>7</sup> / <sub>16</sub> "	151.50
With <i>f.4.5</i> Cooke Aviar Lens . . . . .	6"	153.00	7"	181.50
With <i>f.4.5</i> Dallmeyer Serrac Lens . . . . .	6"	150.00	7½"	171.00
With <i>f.4.5</i> Ross Xpres Lens . . . . .	6"	135.50	7½"	160.00

REVOLVING BACK GRAFLEX SERIES D—Cont'd

	3¼ x 4¼		4 x 5	
	Focal Length	Price	Focal Length	Price
With f.4.5 Schneider Xenar Lens . . . . .	6½"	\$127.25	7⅝"	\$144.50
With f.4.5 Voigtlander Heliar Lens . . . . .	6½"	150.00	7⅝"	170.00
With f.4.5 Carl Zeiss Tessar Lens . . . . .	6"	122.50	7"	148.00
With f.3.5 Cooke Pressic Lens . . . . .	6¼"	184.50	7½"	218.50
With f.3.5 Dallmeyer Dalmac Lens . . . . .	6"	185.00	7½"	214.00
With f.3.5 Ross Xpres Lens . . . . .	6½"	175.50	7¼"	198.00
With f.3.5 Schneider Xenar Lens . . . . .	7⅛"	143.75	8¼"	164.75
With f.3.5 Voigtlander Heliar Lens . . . . .	6½"	170.00		
With f.3.5 Carl Zeiss Tessar Lens . . . . .	6½"	170.00	8¼"	244.50#
F.4.5 Dallmeyer Telephoto Lens (cost additional) . . . . .	12"	105.00	14"	118.00
			17"	158.00
			20"} 24"}	Upon Application
F.5.6 Dallmeyer Telephoto Lens (cost additional) . . . . .	12"	102.00	14"	124.00
			17"	167.00
			20"} 24"}	Upon Application
F.5.5 Schneider Tele Xenar Lens (cost additional) . . . . .	11¾"	57.75	14¾"	75.50
F.5.6 Cooke Telephoto Lens (cost additional) . . . . .	12½"	115.00	15"	148.00
F.6.3 Ross Telephoto Lens (cost additional) . . . . .	13"	98.75	17"	149.75
F.6.3 Voigtlander Telephoto Lens (cost additional) . . . . .	13"	70.00	13"	70.00

REVOLVING BACK AUTO GRAFLEX

	3¼ x 4¼		4 x 5	
	Focal Length	Price	Focal Length	Price
Without Lens, including Film Pack Adapter and Focusing Panel . . . . .		\$108.00		\$124.00
With f.4.5 Kodak Anastigmat Lens . . . . .	7½"	158.00	10"	232.00
With f.4.5 Bausch & Lomb Tessar Lens . . . . .	7⅞"	159.50	9¾"	237.00
With f.4.5 Cooke Aviar Lens . . . . .	8¼"	215.50	10"	250.00
With f.4.5 Dallmeyer Serrac Lens . . . . .	7½"	179.00	10"	291.50
With f.4.5 Ross Xpres Lens . . . . .	7¼"	168.00	10"	239.00
With f.4.5 Schneider Xenar Lens . . . . .	7⅝"	152.50	9½"	198.50
With f.4.5 Voigtlander Heliar Lens . . . . .	8¼"	173.00	9½"	214.00
With f.4.5 Carl Zeiss Tessar Lens . . . . .	8¼"	177.00	10"	237.00#
With f.6.3 Bausch & Lomb Convertible Protar Lens . . . . .	*7⅞"	199.00	‡9¾"	249.50
F.6.3 Voigtlander Telephoto Lens (cost additional) . . . . .	13"	70.00		

\*Focal Length of single elements 13¾".  
 ‡Focal Length of single elements 16⅜".  
 #Includes Metal Lensboard.



## REVOLVING BACK AUTO GRAFLEX—Cont'd

	3¼ x 4¼		4 x 5	
	Focal Length	Price	Focal Length	Price
F.5.6 Dallmeyer Telephoto Lens (cost additional) . . . . .	14"	\$124.00		
	17"	167.00	17"	\$167.00
F.4.5 Dallmeyer Telephoto Lens (cost additional) . . . . .			20"	} Upon Application
	14"	118.00	24"	
	17"	158.00	17"	158.00
F.5.6 Cooke Telephoto Lens (cost additional) . . . . .			20"	} Upon Application
			24"	
	15"	148.00	20"	296.00

## HOME PORTRAIT GRAFLEX

5 x 7

	Focal Length	Price
Without Lens, including Cut Film Holder (Plate Holder optional) and Focusing Panel . . . . .		\$225.00
With f.4.5 Kodak Anastigmat Lens . . . . .	12"	375.00
With f.4.5 Bausch & Lomb Tessar Lens . . . . .	11¾"	389.00
With f.4.5 Cooke Aviar Lens . . . . .	12½"	447.00
With f.4.5 Dallmeyer Serrac Lens . . . . .	12"	394.00
With f.4.5 Ross Xpres Lens . . . . .	12"	390.00
With f.4.5 Schneider Xenar Lens . . . . .	11¾"	328.75
With f.4.5 Voigtlander Heliar Lens . . . . .	12"	355.00
With f.4.5 Carl Zeiss Tessar Lens . . . . .	12"	373.00
With f.3.5 Dallmeyer Dalmac Lens . . . . .	12"	477.00
With f.3.5 Schneider Xenar Lens . . . . .	11¾"	363.00
With f.3.5 Voigtlander Heliar Lens . . . . .	12"	405.00
With f.3.5 Carl Zeiss Tessar Lens . . . . .	12"	422.00
F.4.5 Dallmeyer Telephoto Lens (cost additional) . . . . .	20"	250.00
	24"	335.00
F.5.6 Dallmeyer Telephoto Lens (cost additional) . . . . .	20"	240.00
	24"	330.00
F.5.6 Cooke Telephoto Lens (cost additional) . . . . .	20"	296.00

## SPEED GRAPHIC

4 x 5

	Focal Length	Graphic Back		Graflex Back	
		\$75.00		\$88.00	
		Barrel	Shutter	Barrel	Shutter
Without Lens . . . . .					
With f.4.5 Kodak Anastigmat Lens . . . . .	6¾"	\$111.00	\$131.00°	\$124.00	\$144.00°
With f.4.5 Bausch & Lomb Tessar Lens . . . . .	6½½"	114.00	135.00°	127.00	148.00°
With f.4.5 Cooke Aviar Lens . . . . .	6"	138.00	167.50†	151.00	180.50†
With f.4.5 Dallmeyer Serrac Lens . . . . .	6"	135.00		148.00	
With f.4.5 Ross Xpres Lens . . . . .	6"	120.50	134.50†	133.50	147.50†
With f.4.5 Schneider Xenar Lens . . . . .	6"	108.50	123.25°	121.50	136.25°
With f.4.5 Voigtlander Heliar Lens . . . . .	6½"	135.00	153.00†	148.00	166.00†
With f.4.5 Carl Zeiss Tessar Lens . . . . .	6"	106.00	119.50†	119.00	132.50†
With f.3.5 Dallmeyer Dalmac Lens . . . . .	6"	170.00		183.00	

°Compound Shutter.

†Compur Shutter.

SPEED GRAPHIC—Cont'd

4 x 5

	Focal Length	Barrel	Shutter	Barrel	Shutter
With f.3.5 Ross Xpres Lens . . . . .	6½"	\$160.50		\$173.50	
With f.3.5 Schneider Xenar Lens . . . . .	6½"	128.25	\$136.75°	141.25	\$149.75°
With f.3.5 Voigtlander Heliar Lens. . . . .	6½"	145.00	175.00†	158.00	188.00†
F.4.5 Dallmeyer Telephoto Lens (cost additional) . . . . .	12"	105.00		105.00	
F.4.5 Dallmeyer Telephoto Lens (cost additional) . . . . .	14"	118.00		118.00	
F.4.5 Dallmeyer Telephoto Lens (cost additional) . . . . .	17"	158.00		158.00	
F.5.6 Dallmeyer Telephoto Lens (cost additional) . . . . .	12"	102.00		102.00	
F.5.6 Dallmeyer Telephoto Lens (cost additional) . . . . .	14"	124.00		124.00	
F.5.6 Dallmeyer Telephoto Lens (cost additional) . . . . .	17"	167.00		167.00	
F.5.5 Schneider Telephoto Lens (cost additional) . . . . .	11¾"	57.75		57.75	
F.5.6 Cooke Telephoto Lens (cost additional) . . . . .	12½"	115.00		115.00	
F.5.6 Cooke Telephoto Lens (cost additional) . . . . .	15"	148.00		148.00	
F.6.3 Ross Telephoto Lens (cost additional) . . . . .	13"	98.75		98.75	

°Compound Shutter.

†Compur Shutter.



COLOR PHOTOGRAPHY

All Graflex models are adapted for the accommodation of color plates by simply obtaining, as additional equipment, a Graflex Ground Glass Focusing Panel and Filters. Through reversing the ground glass in the panel the difference in register of focus between the color and standard dry plates is compensated for. With the ground glass reversed, color plates may be used in the standard Graflex Plate Holders.

FOLMER GRAFLEX CORPORATION  
ROCHESTER, N. Y.