

# GRAFLEX

Revised to September 1, 1923



# GRAFLEX

and Graphic  
Cameras



EASTMAN KODAK COMPANY

*Folmer & Schwing Department*

ROCHESTER, NEW YORK

September 1, 1923





Slow exposures are particularly valuable for use indoors. For example, the above illustration is from a Graflex negative made at  $1/10$  of a second.

The cover illustration is from a Graflex negative made at  $1/1000$  of a second.



# The Graflex

**G**RAFLEX advantages, always conspicuous when the task is hard, are definitely valuable for all 'round amateur use. The same features that won this camera its fame in speed photography give it the lead in other fields as well. Indeed, its aptitude for making sharp, snappy negatives of average, every-day subjects is of first importance.

The excellence of a photograph depends on three factors, each of which is facilitated for the Graflex user. The principal object must occupy the center of attention; it must be clearly and sharply portrayed; lights and shadows must be reproduced as they exist in the subject itself.

Pleasing composition, correct focus, proper exposure are therefore essential, and all three are safeguarded by fundamental Graflex features.

Thus protected from his favorite faults, any amateur finds that he can get superior negatives with a Graflex. And he can handle with confidence an extraordinary range of subjects; the Graflex does all, except wide angle work, that any hand camera can do and it provides the surest way to good pictures.

## *The Reflecting Mirror Eliminates Guesswork*

Ranking first among the Graflex features and invaluable to amateur and professional alike is the reflecting mirror. This mirror takes the guesswork out of composition and focusing by reflecting the image to a ground glass at the base of the hood, where it is visible, right side up, picture size until the instant of exposure.

The pictorial arrangement, the lighting, the amount of foreground, sky and background included, the size of the principal object on the negative—all are seen in advance by looking in the hood. Thus the reflecting mirror makes it easy to get properly composed pictures.



The reflecting mirror makes precise focusing also certain. Distances are not estimated nor is a focusing scale used because, as the lens is racked back and forth, it is easy to see on the ground glass when the reflected image is sharp.

With the reflecting mirror principle as applied in the Graflex camera it is possible to make successive exposures quickly and yet be sure of keen focus and pleasing composition.

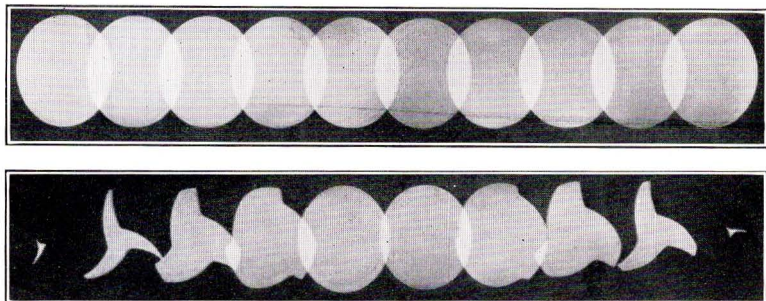
### *A Shutter Speed for Every Need*

The wide versatility of the Graflex camera is largely due to the long range of exposures offered by its shutter. The Graflex Focal Plane shutter provides twenty-four instantaneous speeds from  $1/10$  to  $1/1000$  of a second, a slow snapshot of about  $1/5$  and time exposures of any duration.\*

While the fastest Graflex speeds are far beyond the demands of ordinary photography there is a certain satisfaction in being able to make well-timed negatives at  $1/680$  or  $1/1000$  of a second of birds in flight, racing motor cars and similar swift action subjects when opportunities occur. A speed of  $1/350$  or  $1/295$  is often useful, however, for catching rollicking children or active animals. Such pictures are distinguished by their animation, a quality attainable only with a short exposure.

At the other end of its range the Graflex Focal Plane shutter offers decided advantages also. Set at  $1/5$  or  $1/10$  of a second, snapshots can even be made indoors in good illumination, so much light does this shutter pass when used in company with such a lens as the Kodak Anastigmat *f.* 4.5. For portraits and storytelling pictures in the home and for snapshots in the shade, the slow Graflex exposures are especially valuable.

\* The Home Portrait Graflex has twenty-four speeds from 1 second to  $1/500$  of a second; the Press Graflex has twenty-six speeds from  $1/10$  to  $1/1500$  of a second.



From actual photographs made with identical lenses during exposures of  $1/100$  of a second, each flash representing  $1/1000$  of a second. The upper strip, made with a Graflex Focal Plane shutter, shows uniform illumination, whereas the lower strip indicates that the best between-lens shutter is "wide open" during the fifth and sixth flashes only.

The shutter itself is a long curtain in which are several reinforced rectangular openings, each of different size. During an exposure one of these openings passes across the film, close to the sensitized surface, at a constant velocity, giving uniform illumination throughout the image area. The duration of the exposure is regulated by the size of curtain aperture chosen and the speed at which the curtain travels when released. This speed depends on the tension to which the curtain is wound before the exposure.

Attached to the camera is a metal plate on which are engraved the twenty-four shutter speeds ( $1/10$ ,  $1/15$ ,  $1/20$ , etc., up to  $1/1000$ ) attained by each curtain opening when combined with each curtain tension. The winding, ratchet and release mechanism is accurate and positive.

The superiority of the Graflex Focal Plane shutter over a "between-lens" shutter is that the Graflex Focal Plane shutter works at full efficiency throughout the entire exposure period, whereas a "between-lens" shutter gives only partial illumination while it is opening and closing, as shown by the laboratory photographs above. During a given exposure the focal plane shutter passes about one-third more light than does the ordinary type of shutter. This means that the Graflex can be operated



at a greater shutter speed without danger of under-exposure, and that when using Kodak Cut Film *Super Speed* one of the slowest shutter adjustments can often be employed where *time* would ordinarily be required.

### *A Sharp-cutting, Fast-working Lens*

To gain the fullest advantage of so efficient a shutter mechanism the lens must be of superfine quality and of high speed. The Kodak Anastigmat lenses *f.* 4.5 specified for Graflex cameras are designed for the particular cameras with which they are listed, and fitted thereto they are unsurpassed by any lenses made anywhere at any price. Equipped with the Kodak Anastigmat *f.* 4.5 the Graflex realizes complete optical and mechanical co-ordination, with an obvious gain in photographic proficiency.

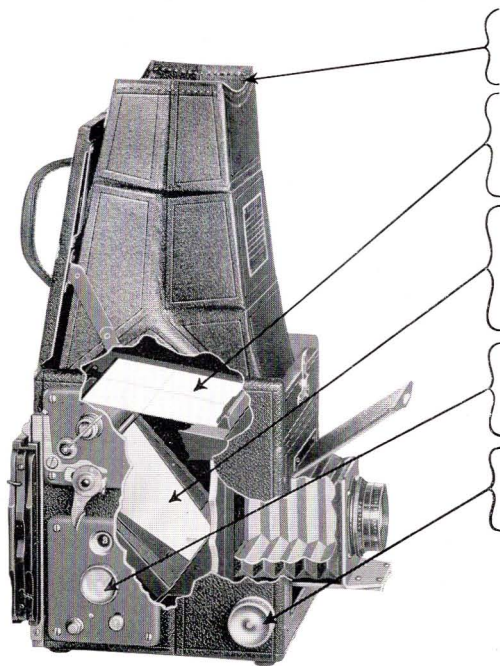
Every model of Graflex has enough bellows capacity to permit of portrait work without the use of any auxiliary attachment.

Throughout the manufacture of the Graflex every piece of material used must be worthy of the superior photographic features that are incorporated in this camera. It is built sturdy, to withstand hard use. The bodies are made of choice mahogany and covered with the finest Morocco leather. Exposed wood parts are ebonized, and exposed metal parts are of silver-plated brass, richly oxidized to a dull, matte tone. Mechanically, the Graflex is a masterpiece of craftsmanship, just as photographically it is a masterpiece of science.

### *An Easy Camera to Use*

The whole aim of the Graflex is to combine the reflecting mirror principle, the focal plane shutter and appropriate auxiliary features in a camera that is equal to the severest requirements of professional use, yet so reliable and easy to operate as to be well within the range of any amateur.

And the fact that the Graflex user sees on the ground glass a brilliant image of his subject, right-side-up, full picture size, in its own colors adds a new fascination to hand camera photography.



Look into the focusing hood and you see a reflected image of the subject, right side up, full picture size.

When the image on the ground glass is sharp, the focus is sharp; if the composition is correct on the ground glass it will be correct in the picture.

The tilted mirror reflects the image to the ground glass above. When the exposure lever is pressed the mirror swings upward out of the way, releasing the shutter curtain.

Focal plane shutter has speed of  $1/10$  to  $1/1000$  of a second and passes about one-third more light than does any other type of shutter.

Focus is under easy control until the instant of exposure.

The Graflex way is the surest way of getting good pictures because you *know* when the focus is sharp, you *see* what the view includes



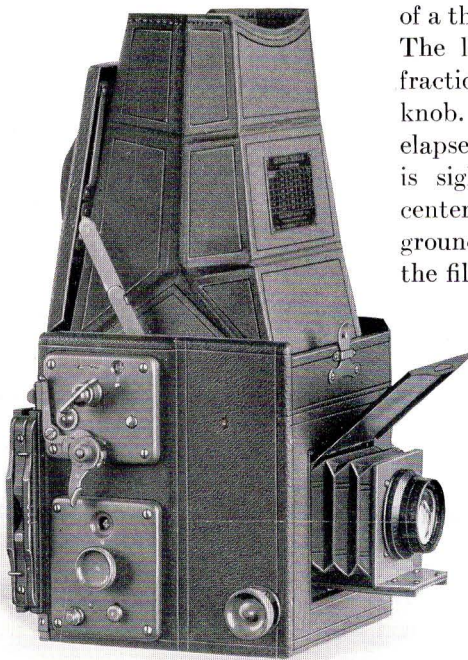
# Graflex, *Series B*

(Successor to the Auto Graflex, now discontinued)

**T**HIS camera conveniently co-ordinates the distinctive Graflex features—reflecting mirror, focal plane shutter, fast lens—and it embodies two innovations in addition.

Its lens, Kodak Anastigmat *f*.4.5, is fitted in a permanent rigid mount instead of in a removable board. This permits a smaller bellows section. The lens standard travels on a single, wide, metal track, whereas on previous models the whole front racked back and forth.

The hood opens at the release of a thumb catch near the handle. The lens uncovers at the first fractional turn of the focusing knob. Only a moment need elapse from the time the subject is sighted until it is properly centered, sharply focused on the ground glass, and recorded on the film.



Pleasing composition and sharp focus are made easy by the reflecting mirror, which shows the image right side up, full picture size until the instant of exposure. The focal plane shutter has twenty-four speeds, 1/10 to 1/1000 of a second, a slow snapshot of about 1/5 and any *time* desired.

The Graflex, Series B, is designed as a unit. It is a one-lens instrument, sold only with the Kodak Anastigmat *f*.4.5. Lens and camera therefore match exactly. And the Kodak Anastigmat *f*.4.5 is the peer of any anastigmat.

One cut film holder is supplied so that Kodak Cut Film and Kodak Cut Film *Super Speed* can be employed in the regular equipment. A plate holder is optional, however, and the Graflex Roll Holder, Graflex Cut Film Magazine, Graflex Film Pack Adapter and Graflex Plate Magazine can also be used interchangeably.

The Graflex, Series B, is made in three sizes:  $3\frac{1}{4} \times 4\frac{1}{4}$ ,  $4 \times 5$  and  $5 \times 7$ .

#### DETAILS

	$3\frac{1}{4} \times 4\frac{1}{4}$	$4 \times 5$	$5 \times 7$
Dimensions . . . . .	$5\frac{3}{4} \times 5\frac{3}{8} \times 6\frac{1}{4}$	$6\frac{3}{4} \times 6\frac{1}{4} \times 7\frac{1}{4}$	$9\frac{1}{4} \times 8\frac{1}{4} \times 8\frac{3}{4}$
Weight . . . . .	4 lbs., 6 oz.	7 lbs.	$9\frac{3}{4}$ lbs.
Focal length of lens . . . . .	$5\frac{1}{2}$ in.	$6\frac{3}{8}$ in.	$8\frac{1}{2}$ in.
Closest working distance . . . . .	$26\frac{1}{2}$ in.	24 in.	26 in.

#### THE PRICE

	$3\frac{1}{4} \times 4\frac{1}{4}$	$4 \times 5$	$5 \times 7$
GRAFLEX, Series B, with one cut film holder or one plate holder and Kodak Anastigmat Lens <i>f</i> . 4.5 . . . . .	No. 31 \$ 75.00	No. 32 \$ 92.00	No. 34 \$145.00
Graflex Roll Holder . . . . .	No. 51 10.25	No. 53 11.25	No. 54 14.00
Graflex Cut Film Holder . . . . .	2.50	2.50	3.50
Graflex Cut Film Magazine . . . . .	14.00	15.25	17.00
Graflex Plate Magazine . . . . .	14.00	15.25	17.00
Graflex Film Pack Adapter . . . . .	4.75	5.50	7.50
Graflex Plate Holder . . . . .	2.50	2.50	3.50
Leather Case for camera and roll holder or cut film magazine . . . . .	7.75	8.75	14.50
Leather Case for camera and plate magazine . . . . .	8.25	10.25	15.25
Ground glass focusing panel, to interchange with holder . . . . .	3.50	4.25	5.75
Kodak Cut Film, doz. . . . .	.67	.93	1.50
Kodak Cut Film <i>Super Speed</i> , doz. . . . .	.77	1.03	1.65
Kodak Film Pack . . . . .	No. 518 .90	No. 523 1.10	No. 515 1.90
Eastman Graflex Roll Film, 6 exp. . . . .	No. 51 .45	No. 53 .55	No. 54 .95

*The prices of cameras and film include the Excise Tax.*



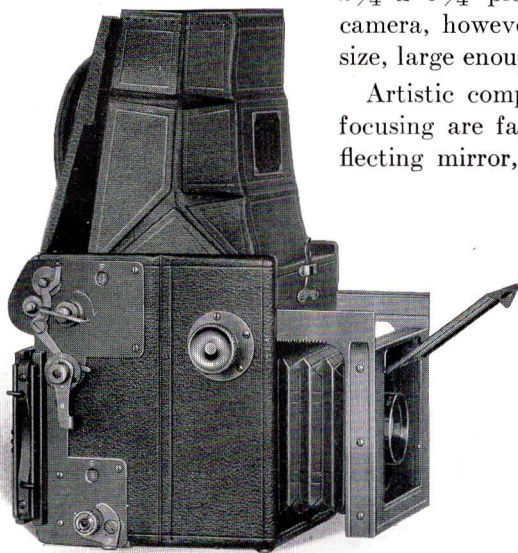
# Auto Graflex Junior

AS indicated by its name, the Auto Graflex Junior is a compact camera—the smallest member of the Graflex family. It embodies all the basic Graflex characteristics, and, in addition, the quick action features which cut preparation for the picture to a minimum.

Yet this complete, capable camera weighs only forty-four ounces and when closed its longest dimension is but five inches.

The Kodak Anastigmat lens of  $4\frac{3}{8}$ -inch focal length gives ample depth of definition for a wide variety of work, even at *f.* 4.5. Negatives made by either of the fast anastigmats recommended are so well defined that the prints have a crispness that is distinctive. Such negatives also produce good enlargements. The  $2\frac{1}{4} \times 3\frac{1}{4}$  picture made by this camera, however, is an economical size, large enough for ordinary use.

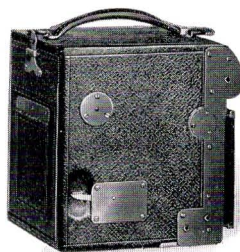
Artistic composition and precise focusing are facilitated by the reflecting mirror, which shows in the



hood a brilliant, right-side-up, image of the subject. Guesswork is eliminated; the mirror tells the truth. The Graflex Focal Plane shutter offers instantaneous speeds of 1/10 to 1/1000 of a second—twenty-four in all—a slow snapshot of about 1/5 of a second, especially useful indoors, and adjustments for *time*.

Regular equipment includes one cut film holder (plate holder optional), and there are also Graflex attachments to fit this camera for roll film and film packs. These attachments have dark slides so that they can be interchanged between exposures.

The light weight and small compass of the Auto Graflex Junior recommend it to many amateurs. It is a capable camera in every respect, and convenient to carry.



The Auto Graflex Junior closed. This illustration shows the shutter release lever, conveniently located for the left thumb, as on other Graflex cameras.

#### DETAILS

Dimensions, 5 x 4 $\frac{3}{8}$  x 5 in.; bellows capacity, 5 $\frac{1}{2}$  in.; weight, with lens, 2 $\frac{3}{4}$  lbs. Focal length of lenses: Kodak Anastigmat *f.* 4.5, 4 $\frac{3}{8}$  inches; B. & L. Tessar, Series Ic, *f.* 4.5, 4 $\frac{1}{2}$  inches.

#### THE PRICE

	2 $\frac{1}{4}$ x 3 $\frac{1}{4}$
AUTO GRAFLEX JUNIOR with one cut film holder or one plate holder and	
Kodak Anastigmat Lens <i>f.</i> 4.5, No. 30 . . . . .	\$62.50
With B. & L. Tessar Lens, Series Ic, <i>f.</i> 4.5, No. 13 . . . . .	66.50
Graflex Roll Holder, No. 50 . . . . .	9.75
Graflex Cut Film Holder . . . . .	1.75
Graflex Cut Film Magazine . . . . .	12.00
Graflex Plate Magazine . . . . .	12.00
Graflex Film Pack Adapter . . . . .	4.50
Graflex Plate Holder . . . . .	1.75
Ground glass focusing panel, to interchange with holder . . . . .	3.25
Leather Case for camera and roll holder or cut film magazine . . . . .	6.25
Leather Case for camera and plate magazine . . . . .	7.00
Kodak Cut Film, doz. . . . .	.46
Kodak Cut Film <i>Super Speed</i> , doz. . . . .	.52
Kodak Film Pack, No. 520 . . . . .	.50
Eastman Graflex Roll Film, No. 50, 6 exposures . . . . .	.25

*The prices of camera and film include the Excise Tax.*



3¼ x 4¼ and 4 x 5 Revolving Back

## Graflex, *Series B*

(Successor to the Revolving Back Telescopic Graflex)

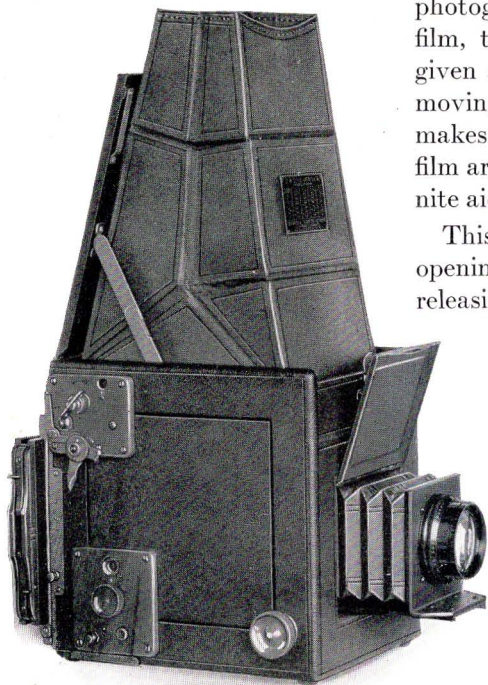
**K**ODAK Anastigmat *f*.4.5 in a permanent mount and a smaller bellows section are the features that distinguish this new camera from its predecessor.

The revolving back is added to satisfy the demand for a camera that compactly combines this helpful device with the reflecting mirror and focal plane shutter of which every Graflex boasts.

When a vertical subject is to be photographed lengthwise of the film, the back of the camera is given a quarter turn without removing the holder. This feature makes it easy to use the entire film area advantageously—a definite aid to good composition.

This camera also has the self-opening lens shield and quick-releasing hood—time-saving conveniences that are appreciated whenever a picture is made.

One cut film holder (or one plate holder) is supplied with the Revolving Back Graflex, Series B, which also takes the Graflex attachments for roll film and film packs.



With lens inbuilt, the Revolving Back Graflex, Series B, is a complete instrument, in which every part is in harmony. Kodak Anastigmat *f.* 4.5, the only lens equipment offered, exactly suits this camera and has no superior at any price.

The focal plane shutter provides a speed for every occasion—1/10 to 1/1000 of a second, the useful slow automatic exposure of about 1/5 and *time* of any duration.

The Revolving Back Graflex, Series B, is therefore splendidly equipped for a wide range of usefulness in the hands of any amateur.



The Revolving Back works smoothly and is light-tight in any position.

#### DETAILS

	3¼ x 4¼	4 x 5
Dimensions . . . . .	6¾ x 5½ x 6¾	8¾ x 6¾ x 7¾
Weight . . . . .	5½ lbs.	7¾ lbs.
Focal length of lens . . . . .	6¾ in.	7½ in.
Closest working distance . . . . .	24 in.	28 in.

#### THE PRICE

REVOLVING BACK GRAFLEX, Series B, with one cut	3¼ x 4¼	4 x 5
film holder or one plate holder and Kodak Anastigmat lens <i>f.</i> 4.5 . . . . .	No. 32 \$100.00	No. 33 \$116.00
Graflex Roll Holder . . . . .	No. 51 10.25	No. 53 11.25
Graflex Cut Film Holder . . . . .	2.50	2.50
Graflex Cut Film Magazine . . . . .	14.00	15.25
Graflex Plate Magazine . . . . .	14.00	15.25
Graflex Film Pack Adapter . . . . .	4.75	5.50
Graflex Plate Holder . . . . .	2.50	2.50
Leather Case for camera and roll holder or cut film magazine . . . . .	8.25	10.75
Leather Case for camera and plate magazine . . . . .	9.50	11.50
Ground glass focusing panel to interchange with holder . . . . .	3.50	4.25
Kodak Cut Film, doz. . . . .	.67	.93
Kodak Cut Film <i>Super Speed</i> , doz. . . . .	.77	1.03
Kodak Film Pack . . . . .	No. 518 .90	No. 523 1.10
Eastman Graflex Roll Film, 6 exposures . . . . .	No. 51 .45	No. 53 .55

*The prices of cameras and film include the Excise Tax.*

## $2\frac{1}{4} \times 3\frac{1}{4}$ Revolving Back Graflex, *Series B*

(Successor to the Revolving Back Graflex Junior)

**R**EVOLVING back, reflecting mirror, focal plane shutter—all in one little camera, the  $2\frac{1}{4} \times 3\frac{1}{4}$  Revolving Back Graflex, Series B. It also has the new style permanent lens mount and compact bellows section that distinguish all of the Series B models. It is small enough to be convenient but large enough to be capable—the pictures it makes are of true Graflex quality in every respect.

While a vertical negative can be made with any Graflex by first focusing in normal position, then turning the camera on its side before the exposure, it is much simpler with a revolving back model. Then the back turns so that the long dimension of the film is upright.

This versatile camera is suitable for all amateur uses. It





will make excellent indoor portraits, glimpses of the youngsters romping on the lawn, swift action scenes, snapshots of animals or whatever sort of picture the occasion happens to offer.

Either cut film, film packs, roll film or plates can be used in the proper Graflex attachments. Regular equipment, however, includes one cut film holder (or plate holder if preferred) so that Kodak Cut Film and Kodak Cut Film *Super Speed* may be employed.

When prints larger than  $2\frac{1}{4} \times 3\frac{1}{4}$  are wanted, excellent enlargements are easily obtained from the sharp, clean-cut negatives made by the Kodak Anastigmat *f. 4.5*. The shutter provides twenty-four speeds of  $1/10$  to  $1/1000$  of a second, a slow automatic exposure of  $1/5$  and any *time* exposure required. The Kodak Anastigmat lens and Graflex focal plane shutter supplement each other's merits. High shutter speeds require a fast lens; the fast lens deserves an efficient shutter that lets an abundance of light reach the film after it enters the camera.

This camera is a great favorite because it is the smallest Graflex with revolving back. It's a junior in size but it's a match for its elders.

#### DETAILS

Dimensions,  $6 \times 4\frac{1}{2} \times 6\frac{1}{4}$  in.; weight, 4 lbs.; focal length of lens,  $5\frac{1}{2}$  in.; closest working distance, 19 inches.

#### THE PRICE

	$2\frac{1}{4} \times 3\frac{1}{4}$
REVOLVING BACK GRAFLEX Series B, with one cut film holder or one plate holder and Kodak Anastigmat Lens <i>f. 4.5</i> , No. 31 . . . . .	\$ 78.00
Graflex Roll Holder, No. 50 . . . . .	9.75
Graflex Cut Film Holder . . . . .	1.75
Graflex Cut Film Magazine . . . . .	12.00
Graflex Plate Magazine . . . . .	12.00
Graflex Film Pack Adapter . . . . .	4.50
Graflex Plate Holder . . . . .	1.75
Ground glass focusing panel, to interchange with holder . . . . .	3.25
Leather Case for camera and roll holder or cut film magazine . . . . .	7.25
Leather Case for camera and plate magazine . . . . .	8.25
Kodak Cut Film, doz. . . . .	.46
Kodak Cut Film <i>Super Speed</i> , doz. . . . .	.52
Kodak Film Pack, No. 520 . . . . .	.50
Eastman Graflex Roll Film, No. 50, 6 exposures . . . . .	.25

*The prices of camera and film include the Excise Tax.*

# The 1A Graflex

## *Autographic*

**R**ICH leather cover and oxidized metal fittings give every Graflex a truly distinguished appearance. Handsomest of all is the 1A, with its graceful lines and curved ends. Its style stands out.

Good looks, however, are but one reason for the favor the 1A Graflex finds: it takes regular Kodak Film and it has the autographic device.

A roll of 6- or 12-exposure film can be loaded into the camera in daylight. And the whole roll can be developed at once in daylight with a Kodak Film Tank.

The autographic feature is an important attribute of this camera. Dates and titles, names of people and places, ages of children or similar information can be written on the film at the time of exposure. This inscription is in the negative margin to identify the scene years afterward and to recount a vital part of each picture story.



Negative size is  $2\frac{1}{2} \times 4\frac{1}{4}$  inches, an oblong proportion that is growing in popularity because it facilitates good composition. In this camera the ground glass on which the reflected image is watched is slightly smaller than the picture area. The difference is scarcely noticeable but it saves space. Twenty-four instantaneous speeds from  $1/10$  to  $1/1000$  of a second, a slow automatic exposure of about  $1/5$  and time exposures as long as desired, are provided by the focal plane shutter.



The 1A Graflex, closed to carry,  
and its case.

The 1A is a Graflex first of all, with special appointments that find wide appeal among amateurs. Its aristocratic style qualifies it for the country club veranda and the promenade deck. But it is right at home wherever there is a picture to make.

#### DETAILS

Dimensions,  $9\frac{1}{2} \times 3 \times 5\frac{1}{4}$  in.; bellows capacity,  $6\frac{1}{2}$  in.; weight with lens,  $4\frac{1}{4}$  lbs.; focal length of lens,  $5\frac{1}{2}$  inches. For roll film only. Plate adapters cannot be supplied.

#### THE PRICE

	$2\frac{1}{2} \times 4\frac{1}{4}$
1A GRAFLEX with Kodak Anastigmat Lens f. 4.5, No. 31 . . . . .	\$120.00
With B. & L. Tessar Lens, Series Ic, f. 4.5, No. 14 . . . . .	125.00
Leather Case . . . . .	6.00
Autographic Film Cartridge, 12 exposures (No. A 116) . . . . .	.60
Autographic Film Cartridge, 6 exposures (No. A 116) . . . . .	.30

*The prices of camera and film include the Excise Tax.*



# The 3A Graflex

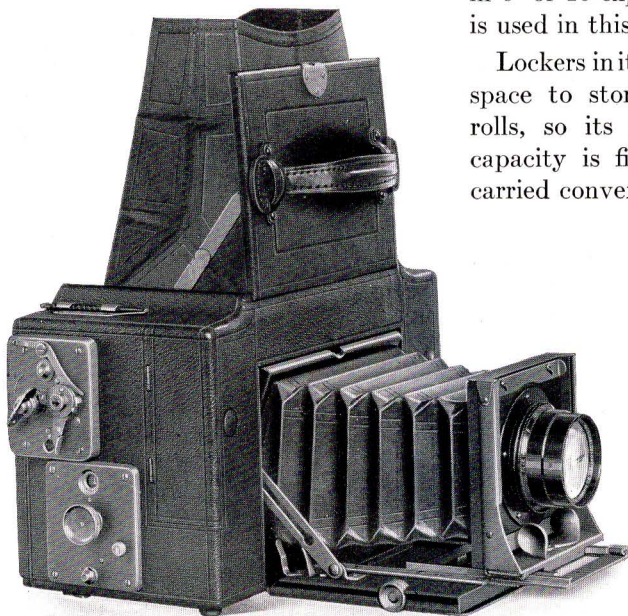
## *Autographic*

**T**HIS camera makes postcard size pictures, takes roll film and is autographic. Add these attributes to the fundamental Graflex features and it is easy to see why the 3A model is so popular.

The postcard picture,  $3\frac{1}{4} \times 5\frac{1}{2}$  inches, is a favorite among amateurs everywhere. It is a generous size, large enough to show the subject in detail, and its oblong proportions encourage good composition. Vertical as well as horizontal subjects fit the image area without waste space.

Regular 3A Kodak Film, in 6- or 10-exposure spools, is used in this Graflex.

Lockers in its ends provide space to store four extra rolls, so its self-contained capacity is fifty exposures carried conveniently. The



advantages of roll film are that the camera is loaded in daylight and that an entire roll can be developed at one time in daylight with a Kodak Film Tank.

The function of the autographic feature is to record on the film facts that will identify the picture later. It tells travelers where and when each negative was made; it tells parents how old the youngster was at the time. On the farm it is valuable for making notations concerning livestock and other subjects for which the Graflex is especially suitable.

It is easy to set the shutter for any of twenty-four instantaneous speeds of 1/10 to 1/1000 of a second, a slow exposure of about 1/5 or for *time* of any duration.

In every Graflex the reflecting mirror shows a right-side-up, negative-size image of the subject so that the user knows when the focus is sharp and sees what the view includes. To get the benefit of the oblong 3A picture area it is often desirable to photograph vertical subjects lengthwise of the film. In such case the camera is held in the usual position during focusing, but turned on its side before making the exposure.

Lenses listed for the 3A Graflex are of 7½-inch focal length so that it produces somewhat larger images than do ordinary post-card size cameras. And the sharp-cutting capacity of the fast anastigmats is an assurance of quality in the prints.

#### DETAILS

Dimensions, 10 x 5 x 6⅜ in.; bellows capacity, 10 in.; weight with lens, 8 lbs.; focal length of lens, 7½ inches. For roll film only. Plate adapters cannot be supplied.

#### THE PRICE

	3¼ x 5½
3A GRAFLEX with Kodak Anastigmat Lens f. 4.5, No. 33 . . . . .	\$150.00
With B. & L. Tessar Lens, Series Ic, f. 4.5, No. 15a . . . . .	155.00
Leather Case . . . . .	8.75
Autographic Film Cartridge, 10 exposures (No. A 122) . . . . .	.90
Autographic Film Cartridge, 6 exposures (No. A 122) . . . . .	.55

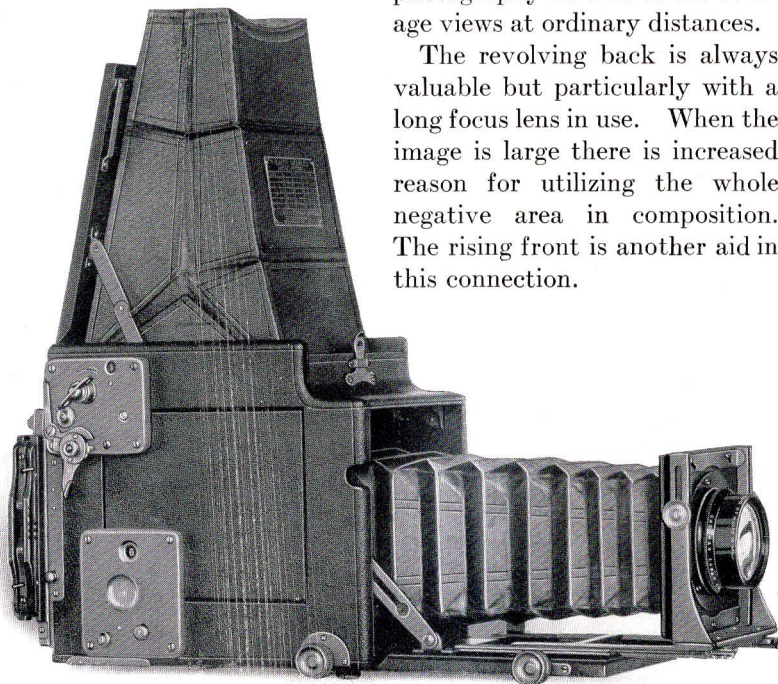
*The prices of camera and film include the Excise Tax.*

## Revolving Back Auto Graflex

**L**ONG bellows and revolving back are two supplementary advantages that make this camera the most versatile member of the Graflex family.

With its unusual bellows capacity the Revolving Back Auto Graflex accommodates long focus anastigmats and even the single elements of convertible lenses, which produce large images at great distances. It also does short range work such as nature study and actual size copying, with the bellows extended. This model is, therefore, especially suited for far-away and close-up photography as well as for average views at ordinary distances.

The revolving back is always valuable but particularly with a long focus lens in use. When the image is large there is increased reason for utilizing the whole negative area in composition. The rising front is another aid in this connection.





By removing the holder and inserting the focusing panel, one can measure the image or examine it for microscopic sharpness with a magnifying glass.

Twenty-four instantaneous speeds of 1/10 to 1/1000 of a second, a slow automatic exposure of about 1/5 of a second, and time exposures of any length can be made.

A cut film holder (or a plate holder) is regular equipment, but the Graflex Cut Film Magazine, Graflex Roll Holder, Graflex Film Pack Adapter, and Graflex Plate Magazine also can be used.

#### DETAILS

	3¼ x 4¼	4 x 5
Dimensions . . . . .	8½ x 5½ x 7	10 x 6¼ x 8
Bellows capacity . . . . .	15½ in.	18½ in.
Weight . . . . .	5¾ lbs.	7½ lbs.
Size of lens board . . . . .	3¼ x 3¼ in.	3¾ x 3¾ in.
Minimum focus of lenses accommodated . . . . .	7⅛ in.	8⅝ in.
Focal length of lenses listed:		
Kodak Anastigmat f. 4.5 . . . . .	No. 33 7½ in.	No. 34 8½ in.
B. & L. Tessar, Series Ic, f. 4.5 . . . . .	No. 15a 7½ in.	No. 35 10 in.
B. & L. Protar, Series VIIa, f. 6.3, complete . . . . .	No. 10 7⅞ in.	No. 17 9⅞ in.
Either element singly . . . . .	No. 10 13¾ in.	No. 13 16⅞ in.

#### THE PRICE

	3¼ x 4¼	4 x 5
REVOLVING BACK AUTO GRAFLEX, without lens, including focusing panel and one cut film holder or one plate holder . . . . .	\$108.00	\$124.00
With Kodak Anastigmat Lens f. 4.5 . . . . .	No. 33 161.00	No. 34 190.00
		No. 35 239.00
With B. & L. Tessar Lens, Series Ic, f. 4.5 . . . . .	No. 15a 166.50	No. 17 241.00
With B. & L. Protar Lens, Series VIIa, f. 6.3 . . . . .	No. 10 195.50	No. 13 237.00
Graflex Roll Holder . . . . .	No. 51 10.25	No. 53 11.25
Graflex Cut Film Holder . . . . .	2.50	2.50
Graflex Cut Film Magazine . . . . .	14.00	15.25
Graflex Plate Magazine . . . . .	14.00	15.25
Graflex Film Pack Adapter . . . . .	4.75	5.50
Graflex Plate Holder . . . . .	2.50	2.50
Leather Case for camera and roll holder or cut film magazine . . . . .	10.00	12.25
Leather Case for camera and plate magazine . . . . .	10.75	13.75
Extra Lens Board . . . . .	.75	.90
Kodak Cut Film, doz. . . . .	.67	.93
Kodak Cut Film <i>Super Speed</i> , doz. . . . .	.77	1.03
Kodak Film Pack . . . . .	No. 518 .90	No. 523 1.10
Eastman Graflex Roll Film, 6 exposures . . . . .	No. 51 .45	No. 53 .55

*The prices of cameras and film include the Excise Tax.*

# The Compact Graflex

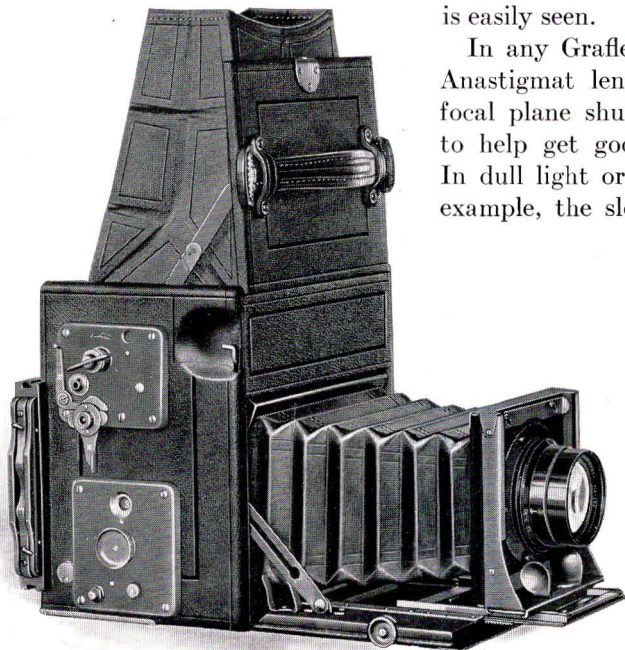
THE Compact Graflex embodies in small space all the Graflex characteristics—the reflecting mirror, the focal plane shutter, the optional use of cut film, roll film, plates or film packs. It is made in two sizes:  $3\frac{1}{4} \times 5\frac{1}{2}$  and  $5 \times 7$ .

Either model is well qualified for a wide variety of usefulness. The  $5 \times 7$  size suggests such subjects as construction projects and commercial work, in which large contact prints are preferred.

The post-card size picture is always popular because the image fits the oblong area without waste space whether the subject is upright or horizontal. The Compact Graflex has an extra large hood, so that when the camera is turned on its side for a vertical

exposure the reflected image is easily seen.

In any Graflex the Kodak Anastigmat lens *f.* 4.5 and focal plane shutter combine to help get good negatives. In dull light or indoors, for example, the slow speed of



1/5 of a second with the lens wide open is particularly useful. And Kodak Cut Film *Super Speed* introduces yet another factor for success.

In addition to the slow snapshot of 1/5 of a second there are twenty-four speeds ranging from 1/10 to 1/1000 as well as *time*.

Regular equipment includes one cut film holder (or one plate holder) but the Graflex Cut Film Magazine, Graflex Film Pack Adapter, Graflex Plate Magazine or Graflex Roll Holder can be used, as can also a ground glass focusing panel.

The Kodak Anastigmats listed for the  $3\frac{1}{4} \times 5\frac{1}{2}$  and  $5 \times 7$  models have focal lengths of  $7\frac{1}{2}$  inches and  $8\frac{1}{2}$  inches respectively.

#### DETAILS

	$3\frac{1}{4} \times 5\frac{1}{2}$	$5 \times 7$
Dimensions . . . . .	$7 \times 4\frac{7}{8} \times 7$	$9\frac{1}{2} \times 7 \times 9\frac{1}{2}$
Bellows capacity . . . . .	10 in.	$12\frac{1}{2}$ in.
Weight with lens . . . . .	$6\frac{3}{4}$ lbs.	$9\frac{3}{4}$ lbs.
Focal length of lens . . . . .	$7\frac{1}{2}$ in.	$8\frac{1}{2}$ in.

#### THE PRICE

	$3\frac{1}{4} \times 5\frac{1}{2}$	$5 \times 7$
COMPACT GRAFLEX with one cut film holder or one plate holder and Kodak Anastigmat Lens f. 4.5	No. 33 \$107.00	No. 34 \$150.00
Graflex Roll Holder . . . . .	No. 52 11.25	No. 54 14.00
Graflex Cut Film Holder . . . . .	2.50	3.50
Graflex Cut Film Magazine . . . . .	15.25	17.00
Graflex Plate Magazine . . . . .	15.25	17.00
Graflex Film Pack Adapter . . . . .	5.50	7.50
Graflex Plate Holder . . . . .	2.50	3.50
Ground glass focusing panel, to interchange with holder . . . . .	4.25	5.75
Leather Case for camera and roll holder or cut film magazine . . . . .	8.25	13.50
Leather Case for camera and plate magazine . . . . .	9.75	15.00
Kodak Cut Film, doz. . . . .	.93	1.50
Kodak Cut Film <i>Super Speed</i> , doz. . . . .	1.03	1.65
Kodak Film Pack . . . . .	No. 522 1.10	No. 515 1.90
Eastman Graflex Roll Film, 6 exposures . . . . .	No. 52 .55	No. 54 .95

*The prices of cameras and film include the Excise Tax.*

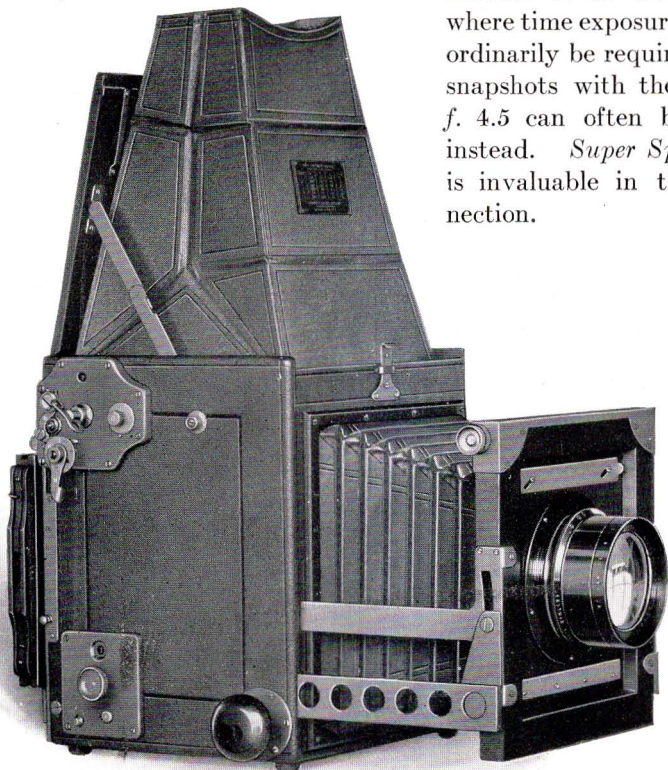


# Home Portrait Graflex

**B**UILT into this camera are features that count directly toward portrait excellence. Swinging front, revolving back, reflecting mirror, 12-inch Kodak Anastigmat lens *f.* 4.5 and shutter speeds as slow as one second help get artistically composed, fully-timed negatives 5 x 7 inches in size.

Home Portrait Graflex advantages are especially evident when light control is imperfect. For portraits and story-telling pictures

indoors or in the shade, where time exposures would ordinarily be required, slow snapshots with the lens at *f.* 4.5 can often be made instead. *Super Speed* film is invaluable in this connection.



Composition and lighting are studied by watching the reflected image while changing the focus and raising, lowering or tilting the lens. At the instant the image looks right it is quickly recorded by simply pressing the shutter release.

A ground glass panel fits the revolving back so that when set on a high tripod this camera can be focused from the rear.

One cut film holder (or plate holder) is included in regular equipment with this camera. Graflex Film Pack Adapter, Graflex Plate Magazine, Graflex Roll Holder or Graflex Cut Film Magazine can be attached.

While the Home Portrait Graflex is primarily intended for portrait-making its focal plane shutter has twenty-four speeds, up to 1/500 of a second, so it is well suited for a variety of other uses.

#### DETAILS

Dimensions,  $9\frac{3}{4} \times 9 \times 10\frac{1}{2}$  in.; focal capacity, 15 in.; weight with lens,  $16\frac{3}{4}$  lbs.; size of lens board, 5 x 5 in.; minimum focus of lenses accommodated, 10-inch.

#### THE PRICE

5 x 7

HOME PORTRAIT GRAFLEX without lens, including focusing panel and one cut film holder or one plate holder . . . . .	\$184.00
With Kodak Anastigmat Lens f. 4.5, No. 36 . . . . .	344.00
Graflex Roll Holder, No. 54 . . . . .	14.00
Graflex Cut Film Holder . . . . .	3.50
Graflex Cut Film Magazine . . . . .	17.00
Graflex Plate Magazine . . . . .	17.00
Graflex Film Pack Adapter . . . . .	7.50
Graflex Plate Holder . . . . .	3.50
Leather Case for camera and roll holder or cut film magazine . . . . .	18.75
Leather Case, for camera and plate magazine . . . . .	21.00
Extra Lens Boards, each . . . . .	1.10
Kodak Cut Film, doz. . . . .	1.50
Kodak Cut Film <i>Super Speed</i> , doz. . . . .	1.65
Kodak Film Pack, No. 515 . . . . .	1.90
Eastman Graflex Roll Film, No. 54, 6 exposures . . . . .	.95

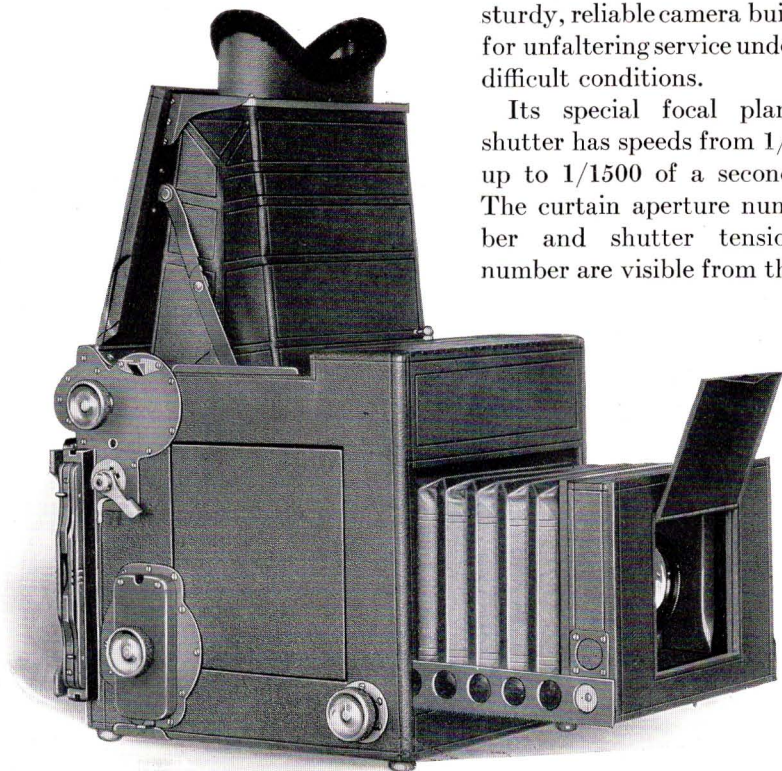
*The prices of camera and film include the Excise Tax.*

# The Press Graflex

**T**HE newspaper or commercial photographer requires a camera that makes good negatives of all kinds of subjects in all kinds of weather. The Press Graflex was designed for his use. Its shutter speed is fast enough to stop the swiftest motion, its picture is large enough to show a scene in detail, its bellows capacity permits close range work, its lens makes good sized images.

The Press Graflex is a sturdy, reliable camera built for unflinching service under difficult conditions.

Its special focal plane shutter has speeds from  $1/5$  up to  $1/1500$  of a second. The curtain aperture number and shutter tension number are visible from the





top. The hood extends into position when a latch near the handle is released. A turn of the focusing knob opens the lens cover ready for business. These quick-action features are appreciated by the press photographer because they save seconds during excitement.

Kodak Anastigmat lens *f.* 4.5 assures sharp definition in the negatives, which are 5 x 7 inches in size. They can be made with cut film, film packs, plates or roll film in the proper Graflex attachments. One cut film holder (plate holder optional) is regularly supplied in order that Kodak Cut Film and Kodak Cut Film *Super Speed* may be used without extra equipment.

A ground glass panel is provided so that this camera can be focused from the back when held at eye level or when set on a high tripod. This panel remains in place while the cut film holder, plate holder or film pack adapter is in use, but is removed when the roll holder or magazine is attached.

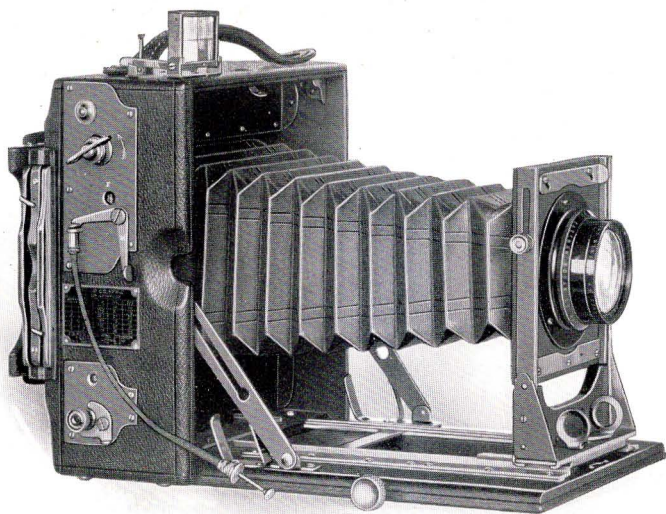
#### DETAILS

Dimensions, 11 x 8 $\frac{1}{4}$  x 9 $\frac{3}{4}$  in.; bellows capacity, 14 in.; weight with lens, 13 lbs.; focal length of lenses, No. 34, 8 $\frac{1}{2}$  inches, No. 35, 10 inches.

#### THE PRICE

	5 x 7
PRESS GRAFLEX with one cut film holder or plate holder and Kodak Anastigmat Lens <i>f.</i> 4.5, No. 34 . . . . .	\$226.50
With Kodak Anastigmat Lens <i>f.</i> 4.5, No. 35 . . . . .	275.00
Graflex Roll Holder, No. 54 . . . . .	14.00
Graflex Cut Film Holder . . . . .	3.50
Graflex Cut Film Magazine . . . . .	17.00
Graflex Plate Magazine . . . . .	17.00
Graflex Film Pack Adapter . . . . .	7.50
Graflex Plate Holder . . . . .	3.50
Leather Case, for camera and roll holder or cut film magazine . . .	18.00
Leather Case, for camera and plate magazine . . . . .	19.00
Kodak Cut Film, doz. . . . .	1.50
Kodak Cut Film <i>Super Speed</i> , doz. . . . .	1.65
Kodak Film Pack, No. 515 . . . . .	1.90
Eastman Graflex Roll Film, No. 54, 6 exposures . . . . .	.95

*The prices of camera and film include the Excise Tax.*



## The Speed Graphic

**T**HE combined advantages of Graflex Focal Plane shutter and Kodak Anastigmat lens *f.* 4.5 are offered by this compact, folding camera. It is suited for general amateur use as well as for swift action.

The  $3\frac{1}{4} \times 5\frac{1}{2}$  and  $5 \times 7$  sizes have twenty-four shutter speeds from  $1/10$  to  $1/1000$  of a second; the  $3\frac{1}{4} \times 4\frac{1}{4}$  model has eighteen shutter speeds from  $1/10$  to  $1/500$ , fast enough with a lens of  $5\frac{1}{2}$ -inch focus.

Either the scale and finder or the built-in ground glass panel may be used in focusing. The finder is of the direct-vision, folding type. The lens front holds the big anastigmat rigidly and can be raised to decrease foreground or when photographing tall subjects.

A cut film holder (plate holder optional) is regularly supplied and a film pack adapter can be attached. Two tripod sockets are provided.

Fine Morocco leather over kiln-dried mahogany is used in the construction of this camera. Exposed wood parts are ebonized, exposed metal parts are brass, silver plated, then oxidized.

The Speed Graphic is a splendid camera, in appearance as well as in performance.

#### DETAILS

	3¼ x 4¼	3¼ x 5½	5 x 7
Dimensions	5¾ x 2¾ x 6¼	7 x 3½ x 7½	8¾ x 3¾ x 9¾
Bellows capacity	10 in.	12 in.	16 in.
Weight	3¼ lbs.	4¾ lbs.	7¼ lbs.
Focal length of lens	5½ in.	7½ in.	8½ in.

#### THE PRICE

*Including one cut film holder or one plate holder*

	3¼ x 4¼	3¼ x 5½	5 x 7
SPEED GRAPHIC with Kodak Anastigmat Lens f. 4.5	No. 31 \$ 72.00	No. 33 \$ 93.00	No. 34 \$123.00
*Leather case, with lock and key	8.50	9.00	11.50
Graphic Plate Holder	2.00	2.00	
Eastman Plate Holder			1.75
Graphic Cut Film Holder	2.00	2.00	
Eastman Film Holder			1.75
Kodak Cut Film, doz.	.67	.93	1.50
Kodak Cut Film <i>Super</i> <i>Speed</i> , doz.	.77	1.03	1.65
Film Pack Adapter	1.50	1.75	2.50
Kodak Film Pack	No. 518 .90	No. 522 1.10	No. 515 1.90

\*Carrying cases for Speed Graphic Cameras accommodate the camera and holders as follows:

3¼ x 4¼, 5 holders; 3¼ x 5½, 5 holders; 5 x 7, 6 holders.

*The prices of cameras and film include the Excise Tax.*

## Graflex Backs for Speed Graphic Cameras

TO permit the use of a greater variety of attachments, the backs of Speed Graphic cameras can be altered to take the Graflex Roll Holder (so that Eastman Graflex Roll Film can be used), Graflex Cut Film Magazine, Graflex Cut Film Holder, Graflex Plate Holder, Graflex Film Pack Adapter and Graflex Plate Magazine. The prices include ground glass focusing panel but no plate holder or film holder.

3¼ x 4¼	3¼ x 5½	5 x 7
\$13.50	\$13.50	\$14.50



## No. 0 Graphic

**T**HIS aristocratic little camera boasts of the Graflex Focal Plane shutter, the Kodak Anastigmat lens *f.* 6.3 and the use of Kodak roll film. Choicest materials and finest workmanship contribute to its smartness and qualify it for the horse show, the beach and the boulevard. It gets excellent pictures anywhere.

Fixed focus makes the No. 0 Graphic easy to use. Everything beyond twelve feet is sharp with the lens at *f.* 6.3; at smaller openings objects much nearer are also in focus.

During an exposure the camera is held at eye level. The view is composed in a finder of the direct-vision type, through which the movement of an object is easily followed. This finder collapses flat when not in use and it can be set so that the camera



points at right angles to the direction in which the camerist is looking. With this novel feature it is often possible to get interesting pictures of subjects that would appear posed if photographed point blank.

Speeds of 1/10 to 1/500 of a second as well as adjustments for time exposures fit this camera for action scenes and for snapshots in the shade, as well as for the usual run of subjects. Contact prints are  $1\frac{5}{8} \times 2\frac{1}{2}$  inches, commonly called vest pocket size. Brilliant enlargements up to 8 x 10 can be obtained because the Kodak Anastigmat *f.* 6.3 makes such full, crisp negatives.

The No. 0 Graphic is a thoroughly capable camera of distinctive style. And it is of convenient size—note the dimensions below.

#### DETAILS

Dimensions,  $5 \times 3\frac{1}{2} \times 3\frac{1}{4}$  in.; weight, 25 oz.;  
focal length of lens 2.83 in.

#### THE PRICE

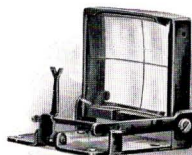
	$1\frac{5}{8} \times 2\frac{1}{2}$
No. 0 GRAPHIC CAMERA with Kodak Anastigmat Lens, <i>f.</i> 6.3 . . . . .	\$48.00
N. C. Film Cartridge, 6 exposures, No. 121 . . . . .	.20
N. C. Film Cartridge, 12 exposures, No. 121 . . . . .	.35
Leather Case . . . . .	4.00

*The prices of camera and film include the Excise Tax.*

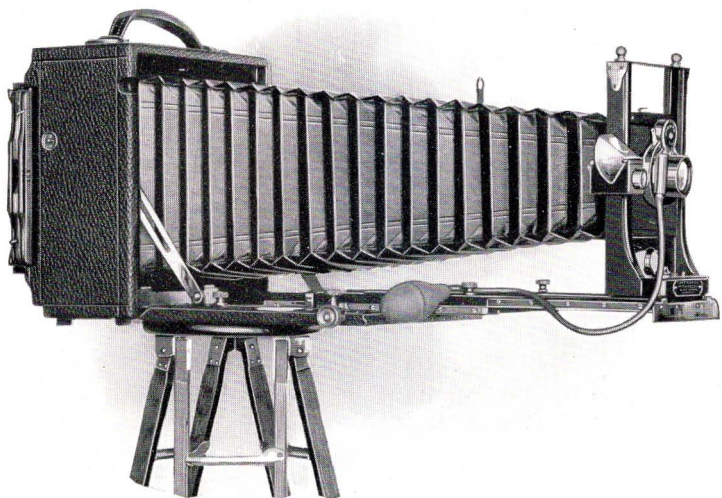
## Graphic Sight Finder

A direct-vision, folding sight finder, to be attached to the top of the camera. The subject is centered on the image area when the intersection of the lines engraved on the finder lens is in direct line with the notch in the top of the vertical sight bar.

The finder folds compactly, and opens automatically at the release of a spring catch.



	$3\frac{1}{4} \times 4\frac{1}{4}$	$3\frac{1}{4} \times 5\frac{1}{2}$	4 x 5	5 x 7
Graphic Sight Finder . . . . .	\$3.50	\$3.50	\$3.50	\$3.50



## Revolving Back Cycle Graphic

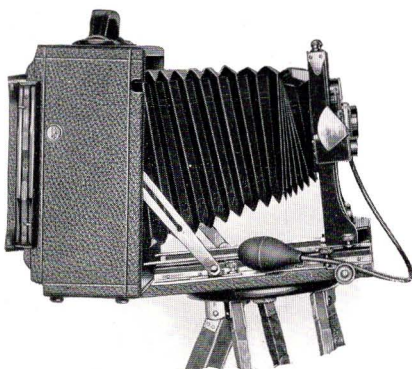
**P**ROFESSIONAL photographers and advanced amateurs appreciate the special features incorporated in the Revolving Back Cycle Graphic. This camera is designed to overcome difficulties of composition often encountered in serious photographic work. It is made in the 5 x 7 and 6½ x 8½ sizes.

The Graphic Rapid Rectilinear and B. & L. Protar, Series VIIa, lenses are of the convertible type. Either lens complete is of medium focal length, giving good depth at normal distances and permitting close range detail work, such as copying, with the bellows fully extended.

The use of a single element of either lens materially increases the focal length. It is, therefore, valuable for landscapes and many commercial subjects because it produces a large image even when good perspective requires that the picture be made from a distance.

When photographing a tall object this camera can be pointed upward, still keeping vertical lines parallel in the image, because its tilting bed is equivalent to a swinging back. To reduce foreground or sky still further the lens board can be raised or lowered—another aid in composition.

Since cut film is now the preferred material, one cut film holder is supplied with this camera unless a plate holder is specified instead. A film pack adapter is also listed for the 5 x 7 size.



Swing Bed and Rising Front are valuable for architectural subjects.

#### DETAILS

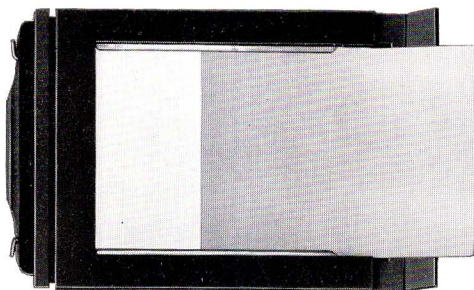
	5 x 7	6½ x 8½
Dimensions . . . . .	8¾ x 4¼ x 9¼	10⅜ x 4½ x 10⅜
Bellows capacity . . . . .	22½ in.	26 in.
Weight . . . . .	6¼ lbs.	7½ lbs.
Size of lens board . . . . .	3⅞ x 3⅞ in.	4¼ x 4¼ in.
Focal length of lenses listed:		
Graphic Rapid Rectilinear, Complete	8½ in.	11½ in.
Front element singly . . . . .	18½ in.	26 in.
Rear element singly . . . . .	13½ in.	16½ in.
B. & L. Protar, Series VIIa, f. 6.3,		
Complete . . . . .	No. 10 7⅞ in.	No. 13 9¼ in.
Either element singly . . . . .	No. 10 13¾ in.	No. 13 16⅜ in.

#### THE PRICE

*Including one cut film holder or plate holder and sole leather carrying case*

	5 x 7	6½ x 8½
REVOLVING BACK CYCLE GRAPHIC with Graphic Rapid Rectilinear Lens and Automatic Shutter	\$111.00	\$127.00
With B. & L. Protar Lens, Series VIIa, f. 6.3, and Volute Shutter	No. 10 214.00	No. 13 251.00
Graphic Plate Holder . . . . .		2.75
Eastman Plate Holder . . . . .	1.75	
Graphic Cut Film Holder . . . . .		2.75
Eastman Film Holder . . . . .	1.75	
Film Pack Adapter . . . . .	2.50	
Cut Film, doz. . . . .	1.50	2.27
Cut Film <i>Super Speed</i> , doz. . . . .	1.65	2.53
Kodak Film Pack . . . . .	No. 515 1.90	
Extra Lens Board . . . . .	.75	.90

*The prices of cameras and film include the Excise Tax.*



## Graflex Cut Film Holder

ANY Graflex camera, except the 1A and 3A *Autographic* models, can be adapted to the use of cut film by attaching the Graflex Cut Film Holder. While it fits like a plate holder and is similar in outside appearance it is quite unlike in design, because of the difference in thickness between film and plates.

The end of each side of the frame is hinged, forming a flap which opens after the dark slide is withdrawn. The film slides smoothly into a metal septum, against which it is held by retaining flanges so that the sensitized surface maintains a uniform focal plane. Thus the Graflex Cut Film Holder is quick to load. But its principal advantage is that it permits the use of cut film—a superior medium for making negatives.

### THE PRICE

	$2\frac{1}{4} \times 3\frac{1}{4}$	$3\frac{1}{4} \times 4\frac{1}{4}$	$3\frac{1}{4} \times 5\frac{1}{2}$	$4 \times 5$	$5 \times 7$
Graflex Cut Film Holder	\$1.75	\$2.50	\$2.50	\$2.50	\$3.50

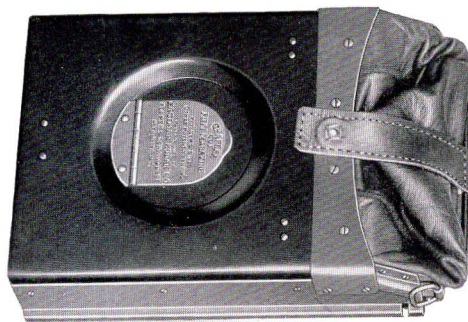
## Graflex Plate Holder

Prices given for Graflex Cut Film Holders apply also to the corresponding sizes of Graflex Plate Holders.

## Holders for Use on Graphic Cameras

Cut film holders and plate holders for Graphic Cameras are listed with the respective models on pages 29 and 33.





## Graflex Cut Film Magazine

**T**WELVE films, each in a metal septum, are carried ready for use in the Graflex Cut Film Magazine. Attached to the end of the magazine is a light-tight leather bag (shown folded in the illustration) into which the septum containing an exposed film is drawn by means of a sliding rod and re-inserted into the back of the magazine. The septums bear consecutive numerals, so that the number of exposures made since loading may be told by looking through a ruby window.

After inserting the dark slide the magazine may be detached from the camera, and one or more films removed in a dark room for development without waiting until all are exposed. Any Graflex camera can be placed in its case without removing the Cut Film Magazine.

### DETAILS

	$2\frac{1}{4} \times 3\frac{1}{4}$	$3\frac{1}{4} \times 4\frac{1}{4}$	$3\frac{1}{4} \times 5\frac{1}{2}$	$4 \times 5$	$5 \times 7$
Dimensions	$5\frac{1}{8} \times 3\frac{1}{4} \times 1\frac{3}{8}$	$6\frac{1}{4} \times 4\frac{1}{4} \times 1\frac{3}{8}$	$7\frac{5}{8} \times 3\frac{7}{16} \times 1\frac{1}{2}$	$7 \times 5 \times 1\frac{1}{16}$	$9\frac{1}{4} \times 6\frac{1}{4} \times 1\frac{5}{8}$
Weight loaded	12 oz.	18 oz.	1½ lbs.	1½ lbs.	2½ lbs.

### THE PRICE

	$2\frac{1}{4} \times 3\frac{1}{4}$	$3\frac{1}{4} \times 4\frac{1}{4}$	$3\frac{1}{4} \times 5\frac{1}{2}$	$4 \times 5$	$5 \times 7$
Graflex Cut Film Magazine	\$12.00	\$14.00	\$15.25	\$15.25	\$17.00

## Graflex Plate Magazine

This attachment is similar to the Graflex Cut Film Magazine, but is necessarily bulkier and heavier when loaded. Prices are the same as for the Graflex Cut Film Magazine.

## Kodak Cut Film

**K**ODAK Cut Film offers these advantages over plates: it weighs but a fraction as much, it is unbreakable, free from halation, easier to handle and it produces negatives of better quality. It can be used in a cut film holder, the Graflex Cut Film Magazine, or, with film sheaths, in any plate holder.

Two kinds of Kodak Cut Film, differing in speed, are supplied.

Regular Kodak Cut Film is as sensitive as the best portrait plate emulsions and is standard in every respect.

Kodak Cut Film *Super Speed* has an extra fast emulsion, as its name indicates. Yet its latitude, gradation and fineness of grain are equal to those of the regular speed. Under difficult light conditions or for short exposures this film will give the best results attainable. Its super speed is especially valuable for making portraits or story-telling pictures indoors and for snapshots in the shade. On every occasion it helps get proper exposure, without sacrificing any other quality possessed by a good negative.

### THE PRICE

	2¼ x 3¼	3¼ x 4¼	3¼ x 5½	4 x 5	5 x 7
Kodak Cut Film, doz.	\$0.46	\$0.67	\$0.93	\$0.93	\$1.50
Kodak Cut Film <i>Super Speed</i> , doz.	.52	.77	1.03	1.03	1.65

*The prices of Kodak Cut Film include the Excise Tax.*

## Kodak Cut Film Sheath

Adapts a plate holder to the use of Kodak Cut Film. It is made of aluminum, ribbed to insure a perfect focal plane. Instantly inserted or removed.

### THE PRICE

	2¼ x 3¼	3¼ x 4¼	3¼ x 5½	4 x 5
Kodak Cut Film Sheath	\$ .10	\$ .10	\$ .15	\$ .15

## No. 3 Eastman Film Sheath

For adapting 5 x 7 and 6½ x 8½ plate holders to the use of cut film.

### THE PRICE

	5 x 7	6½ x 8½
No. 3 Eastman Film Sheath	\$ .20	\$ .25



## Graflex Roll Holder

(Improved Model)

**T**HIS device equips the Graflex so that it may be loaded in daylight with 6-exposure Eastman Graflex Roll Film. It can be attached quickly to any Graflex (except the 1A and 3A *Autographic*), after removing the cut film holder or focusing panel.

In this improved model the spool pins are mounted on slides to keep the spools parallel; rollers are set in the edges of the focal plane to prevent friction. The film is kept tightly drawn by a retarding ratchet. A dark slide is provided so that the holder can be detached and re-attached between exposures.

### THE PRICE

#### GRAFLEX ROLL HOLDERS

3 $\frac{1}{4}$ x 2 $\frac{1}{4}$	For Graflex Roll Holder Film No. 50 . . . . .	\$ 9.75
4 $\frac{1}{4}$ x 3 $\frac{1}{4}$	For Graflex Roll Holder Film No. 51 . . . . .	10.25
5 $\frac{1}{2}$ x 3 $\frac{1}{4}$	For Graflex Roll Holder Film No. 52 . . . . .	11.25
5 x 4	For Graflex Roll Holder Film No. 53 . . . . .	11.25
7 x 5	For Graflex Roll Holder Film No. 54 . . . . .	14.00

Graflex Roll Holders will fit Graflex cameras only.

## Eastman Graflex Roll Film

No. 50, 3 $\frac{1}{4}$ x 2 $\frac{1}{4}$ ,	6 Exposures . . . . .	\$ 0.25
No. 51, 4 $\frac{1}{4}$ x 3 $\frac{1}{4}$ ,	6 Exposures . . . . .	.45
No. 52, 5 $\frac{1}{2}$ x 3 $\frac{1}{4}$ ,	6 Exposures . . . . .	.55
No. 53, 5 x 4,	6 Exposures . . . . .	.55
No. 54, 7 x 5,	6 Exposures . . . . .	.95

To avoid error order film by number.

*The prices of Eastman Graflex Roll Film include the Excise Tax.*

## Graflex Film Pack Adapter

THE Graflex Film Pack Adapter fits in the space ordinarily occupied by a cut film holder or plate holder, and can be used on any Graflex camera except the 1A and 3A *Autographic*. The advantage of this convenience is that the camera can then be loaded in daylight with Kodak Film Packs. Twelve exposures may be made without re-loading.

After each exposure a paper tab is withdrawn and torn off, uncovering an unexposed film ready for the next picture. This operation requires but a moment and makes it possible to take as many as a dozen pictures in quick succession.

The Graflex Film Pack Adapter is quickly attached or detached and is fitted with a dark slide. It is covered with the same high grade of leather that is used on Graflex cameras.



### THE PRICE

	$2\frac{1}{4} \times 3\frac{1}{4}$	$3\frac{1}{4} \times 4\frac{1}{4}$	$3\frac{1}{4} \times 5\frac{1}{2}$	$4 \times 5$	$5 \times 7$
Graflex Film Pack Adapter	\$4.50	\$4.75	\$5.50	\$5.50	\$7.50

## Kodak Film Packs

EACH pack contains twelve exposures of Eastman N. C. Film, which is non-curling, non-halation and properly orthochromatic. Single films can be taken from the pack in a dark-room, without waiting until all twelve exposures are used.

### THE PRICE

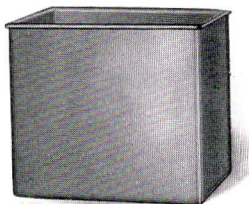
$2\frac{1}{4} \times 3\frac{1}{4}$	$3\frac{1}{4} \times 4\frac{1}{4}$	$3\frac{1}{4} \times 5\frac{1}{2}$	$4 \times 5$	$5 \times 7$
No. 520, \$0.50	No. 518, \$0.90	No. 522, \$1.10	No. 523, \$1.10	No. 515, \$1.90

*The prices of Kodak Film Packs include the Excise Tax.*



## Kodak Developing Box No. 1

THIS tank provides a swift and easy means of obtaining uniform development of Kodak Cut Film. It takes twelve  $2\frac{1}{4} \times 3\frac{1}{4}$ ,  $3\frac{1}{4} \times 4\frac{1}{4}$ ,  $3\frac{1}{4} \times 5\frac{1}{2}$  or  $4 \times 5$  films, each suspended in the solution from a Kodak Cut Film Developing Hanger. Development proceeds by the time and temperature method.



The tank is made of Monel metal and measures  $4 \times 5\frac{1}{4} \times 6$  inches.

### THE PRICE

Kodak Developing Box No. 1, without hangers . . . . . \$2.00

## Kodak Cut Film Developing Hanger



FOR use with the Kodak Developing Box No. 1. It is nine inches long so that it lies securely across the top of the six-inch tank. The clips, which grip the edges of the film, are of Monel metal.

### THE PRICE

Kodak Cut Film Developing Hanger, each . . . . . \$ .20

## Eastman Developing and Fixing Box

For the larger sizes of cut film. During development or fixing, the films are suspended in Eastman Film Developing Hangers No. 4. The box is made of hard rubber.

### THE PRICE

	No. 2 for 8 5 x 7 films	No. 3 for 22 5 x 7 or 15 6½ x 8½ films
Eastman Film Developing and Fixing Box	\$4.00	\$6.00

## Eastman Film Developing Hanger No. 4

A strong, light, metal frame, which holds the film securely in channels, without clips.

### THE PRICE

	5 x 7	6½ x 8½
Eastman Film Developing Hanger No. 4	\$ .60	\$ .75

## Kodak Film Tank



**E**ASTMAN Graflex Film, used in Graflex Roll Holders, and Kodak Film, used in the 1A and 3A *Autographic* Graflex cameras, can be developed in daylight by the Kodak Film Tank. A convenient, easy way of making excellent negatives.

### THE PRICE

3½-inch Kodak Film Tank, for 3¼ x 5½ (3A) Kodak Film, 2½ x 4¼ (1A) Kodak Film and 3¼ x 2¼ Eastman Graflex Film No. 50 . . . . .	\$5.50
5-inch Kodak Film Tank, for 4¼ x 3¼ Eastman Graflex Film No. 51 . . . . .	6.50
7-inch Kodak Film Tank, for 5½ x 3¼ Eastman Graflex Film No. 52, 5 x 4 Eastman Graflex Film No. 53 and 7 x 5 Graflex Film No. 54 . . . . .	8.00

## Film Pack Tank

**T**HIS outfit provides an effective method of developing all or part of a film pack at once and getting negatives of uniform quality.

It is made in three sizes, two of which are designed to hold twelve films. The third size holds six 5 x 7 films.

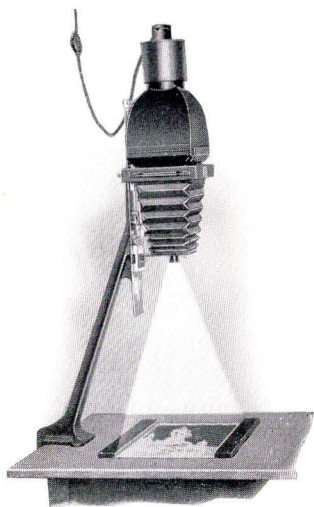


Each film is slipped into a compartment of the cage, as shown in the illustration. After the cage is loaded it is immersed in the developer that is contained in the solution cup, which is light-tight when covered. The time and temperature method of developing then proceeds.

### THE PRICE

Film Pack Tank No. 1, for twelve 2¼ x 3¼ films . . . . .	\$1.75
Film Pack Tank No. 2, for twelve 3¼ x 4¼, 3¼ x 5½, or 4 x 5 films . . . . .	3.50
Film Pack Tank No. 3, for six 5 x 7 films . . . . .	4.00

## Kodak Auto-Focus Enlarger



**E**MBODIED in this apparatus is the self-focusing principle, which has revolutionized the method of making enlargements. As the camera is raised or lowered to make the image on the table larger or smaller, a cam keeps the focus critically sharp. The mechanism is sturdily built and accurate, and the outfit is so simple to use that enlarging with it is fully as easy and almost as rapid as contact printing.

The Kodak Auto-Focus Enlarger clamps to an ordinary table. The Bromide paper lies flat on the table top and is kept in position by a quickly adjusted holder without the use of tacks or clips.

Prints from  $1\frac{1}{2}$  to  $3\frac{1}{2}$  diameters can be made from either plate or film negatives up to 4 x 6 inches. The largest possible print is 14 x 21 inches. A No. 0 Graphic negative makes a  $5\frac{5}{8}$  x  $8\frac{3}{4}$  enlargement; a  $2\frac{1}{4}$  x  $3\frac{1}{4}$  negative will produce a  $7\frac{7}{8}$  x  $11\frac{3}{8}$  enlargement.

The lens is a Kodak Anastigmat, which assures the best possible definition in the print. A special diffusing disc is supplied separately, for obtaining soft focus effects.

### THE PRICE

*(Including Excise Tax)*

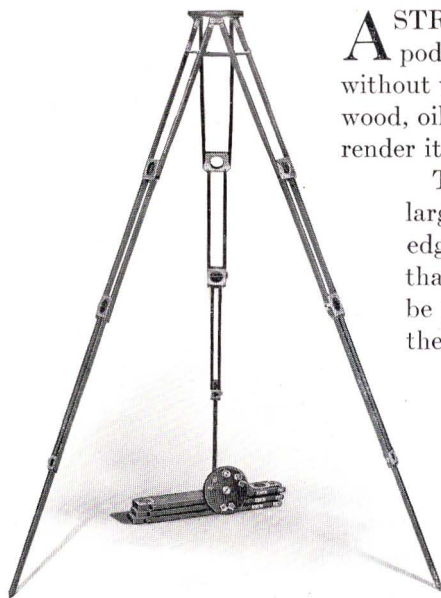
Kodak Auto-Focus Enlarger with Kodak Anastigmat lens, electric cord and plug (without lamp), set of six flexible metal masks . . . . .	\$35.00
Diffusing Disc, for soft focus effects . . . . .	1.00

## Eastman Bromide Papers

Following are prices per dozen of the most popular of the sixteen sizes in which Eastman Bromide Papers, double weight, are listed:

5 x 7—\$0.60;	$6\frac{1}{2}$ x $8\frac{1}{2}$ —\$1.00;	7 x 11—\$1.40;	8 x 10—\$1.40;
10 x 12—\$2.15;	11 x 14 —\$2.65;	14 x 17—\$3.95;	16 x 20—\$5.25.

## Crown Tripod



**A** STRONG, rigid, telescopic tripod that holds a heavy camera without vibrating. Made of cherry wood, oil soaked, then shellacked to render it waterproof.

The head of this tripod is large and substantial. Near its edge is a second screw socket so that the weight of a camera can be properly distributed when the bellows is extended.

Expansion brackets keep the legs firmly attached when in use; binding screws cannot be lost; joints fit snugly. A well-designed, and sturdily built tripod.

### DETAILS

	Length closed	Length extended	Weight	Diameter of top	Weight of camera carried
No. 1—	16 in.	4 ft. 4 in.	36 oz.	4 in.	6 lbs.
No. 2—	17 in.	4 ft. 8 in.	65 oz.	6 in.	9 lbs.
No. 3—	20 in.	5 ft. 6 in.	70 oz.	6 in.	13 lbs.
No. 4—	20 in.	5 ft. 6 in.	90 oz.	6½ in.	18 lbs.

### THE PRICE

Crown Tripod      No. 1, \$7.50;    No. 2, \$8.00;    No. 3, \$9.25;    No. 4, \$10.50

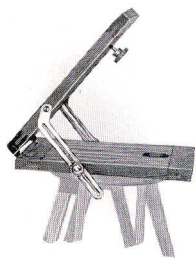
## Carrying Case for Crown Tripods

A sole leather case consisting of a long compartment for the Crown Tripod legs, and a smaller compartment to hold the tripod top. Made for Crown Tripods Nos. 1 and 2 only.

### THE PRICE

No. 1, for Tripod No. 1    .    .    \$5.00    No. 2, for Tripod No. 2    .    .    \$5.50





## Crown Tilting Tripod Top

**W**HEN using this top on a Crown Tripod the camera can be pointed upward or downward, at any angle from horizontal to vertical, without adjusting the tripod legs.

### THE PRICE

No. 1 Crown Tilting Tripod Top, for 4 in. Head \$2.20

No. 2 Crown Tilting Tripod Top, for 6 in. Head 2.65

## Eastman Metal Trimmer No. 10

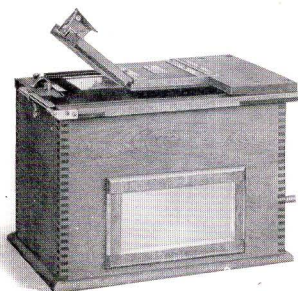
**T**HIS trimmer cuts easily and with perfect register. The table measures ten inches each way, is engraved in squares, has a brass ruler and a transparent trimming guide.



### THE PRICE

Eastman Metal Trimmer No. 10, finished in polished enamel . . . \$15.00

## Kodak Amateur Printer



**A** SELF-CONTAINED outfit for making white margin prints from film negatives of any size from  $1\frac{5}{8} \times 2\frac{1}{2}$  up to  $4 \times 5\frac{1}{2}$  inches. A small ruby bulb within the box provides light by which to adjust film, mask and paper, and latching the hinged pressure board automatically turns on a 60-watt Mazda lamp for the exposure. The position of this lamp can be changed

to give even illumination on negatives of various sizes. An orange window in the side serves as a safelight while developing prints.

### THE PRICE

Kodak Amateur Printer, with complete electrical equipment except 60-watt Mazda bulb . . . \$10.00

## Velox Paper

**V**ELOX is a simply-worked developing-out paper that prints by artificial light and that, because it is made especially for amateur negatives, is rightfully called "the amateur's own paper." To its already wide variety of grades and surfaces has now been added No. 1, a degree of contrast softer than the emulsion formerly labeled "Special." And every sheet now bears the name "Velox" on the back, for ready identification. All Velox is non-abrasion.

GRADE	SURFACE	CONTRAST			
Velvet Velox	Semi-Gloss	*1	*2	*3	*4
Portrait Velox	Smooth Matte	2			
Carbon Velox	Matte	1	2	3	4
Glossy Velox	Enameled	1	*2	*3	4

\*Furnished also in Double Weight Velox. Double weight papers require no mount and when printed under a mask, which will insure a white margin, afford a very artistic effect.

Velox papers are divided broadly into four degrees of contrast called No. 1 (the new contrast), No. 2 (formerly Special), No. 3 (formerly Regular), No. 4 (formerly Contrast), each division containing a variety of surfaces. (See adjoining table.)

No. 1 will secure the best possible results from extremely contrasty negatives. No. 2, formerly Special Velox, should be used with average as well as contrasty negatives. No. 3, formerly Regular Velox, should be used when printing from flat negatives. No. 4, formerly Contrast Velox, will secure the best possible results from extremely thin or from dense, flat negatives. Velvet Velox gives semi-gloss prints of exceptional quality and is generally used for making prints from Kodak negatives.

## The Price

Size Inches	SINGLE WEIGHT			DOUBLE WEIGHT		
	Dozen	½Gross	Gross	Dozen	½Gross	Gross
1½ x 2½	\$0.12		\$1.10	\$0.15		\$1.40
2¼ x 3¼	.12		1.10	.15		1.40
2½ x 4¼	.15		1.35	.20		1.70
3½ x 3½	.15		1.60	.20		2.00
3¼ x 4¼	.20		1.75	.25		2.20
2½ x 4½	.20		1.75	.25		2.20
3¼ x 5½	.20		2.00	.25		2.50
4 x 5	.25		2.30	.30		2.90
2¼ x 7	.20		2.00	.25		2.50
4¼ x 6½	.30		3.05	.40		3.80
5 x 7	.40	\$2.10	3.90	.50	\$2.60	4.90
3½ x 12	.50	2.60	4.75	.60	3.10	5.95

Velox Post-cards, 3½ x 5½, furnished in Velvet, contrasts Nos. 1, 2, 3 and 4; Glossy, contrasts Nos. 2 and 3 . . . . .

	.30	1.50	2.90
Velox Double Post-cards, 3½ x 11 inches . . . . .	.60	3.00	5.80

## Velox Sundries

Eastman M. Q. Tubes, per package of five	\$0.30
Nepera Solution, per 4-ounce bottle	.28
Ditto, per 16-ounce bottle	.84
Nepera Auxiliary Powders (for converting Nepera Solution to a film or plate developer), per package 1 dozen	.35
*Velox Re-developer Tubes, for sepia toning, per package 12 tubes	.84
Velox Liquid Hardener, per 4-ounce bottle	.25
Ditto, 8-ounce bottle	.35
Kodak Acid Fixing Powder for fixing Velox Prints, per pound	.25
Ditto, $\frac{1}{2}$ pound	.15
Ditto, $\frac{1}{4}$ pound	.10

\*Package also includes bleaching agent.

## Flash-light Materials

Flash-light equipment makes the amateur photographer independent of daylight by providing easily controlled, artificial illumination. He can throw the right amount of light in the right direction.

The simplest method of making flash-light pictures is by means of the Eastman Flash Sheets and Kodak Flash Sheet Holder. The sheets burn slowly, giving a broad soft light, while the holder makes their proper use conveniently easy.



No. 1 Flash Sheets, per package of $\frac{1}{2}$ dozen sheets, 3 x 4-inch	\$0.35
No. 2 Flash Sheets, per package of $\frac{1}{2}$ dozen sheets, 4 x 5-inch	.56
No. 3 Flash Sheets, per package of $\frac{1}{2}$ dozen sheets, 5 x 7-inch	.84
Kodak Flash Sheet Holder	1.25

Flash cartridges are recommended only where absolutely instantaneous exposures are required.

Eastman Spreader Flash Cartridges, for use with pistol or fuse (Price includes both fuse and cap), per package of $\frac{1}{2}$ dozen	\$0.50
Eastman Spreader Flash Cartridge Pistol	1.50
Eastman No. 1 Flash Cartridges, for use only with fuse, per package of $\frac{1}{2}$ dozen	1.00
Ditto No. 2	.70
Ditto No. 3	.45

## Eastman Safelight Lamp



**T**HIS convenient new darkroom lamp hangs from an electric cord or fixture and throws the light from a 10-watt bulb directly downward over the trays and work table. Supplied with a 5 x 7 Safelight, Series 00, unless otherwise ordered, for use with developing-out papers. Strongly constructed of metal.

### THE PRICE

Eastman Safelight Lamp, without bulb . . . . .	\$ 3.00
Extra Safelight, 5 x 7, any series . . . . .	.75

## Kodak Safelight Lamp

**A** FAVORITE darkroom lamp for both professional and amateur. Made of metal, white enameled inside, complete with all electric fittings except 25-watt bulb.

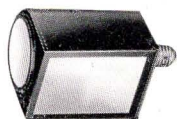
Supplied with a 5 x 7 Safelight, Series 1, unless otherwise ordered, for use with film or plates not color sensitive.



### THE PRICE

Kodak Safelight Lamp, without bulb . . . . .	\$ 3.25
Extra Safelight, 5 x 7, any series . . . . .	.75

## Brownie Safelight Lamp



**A** SMALLER safelight lamp to fit over a 10-watt bulb and screw into a socket. Contains Series 1 Safelights, unless otherwise ordered, in end and side.

### THE PRICE

Brownie Safelight Lamp, without bulb . . . . .	\$ 1.50
Extra Circular End Safelight, any series . . . . .	.25
Extra Rectangular Safelight, any series . . . . .	.40



## Safelights

Available for safelight lamps described on the opposite page.

Series 00—Yellow light, for use with developing-out papers.

Series 0 —Bright orange light, for use with bromide paper and lantern plates.

Series 1 —Orange safelight, for use with films or plates not highly color sensitive.

Series 2 —Safelight for extra rapid orthochromatic plates sensitive to green but not red.

Series 3 —Green safelight, for use with red-sensitive panchromatic plates.

Series 4 —Bright green safelight, for use with ordinary plates, for those who cannot use a red light. Not safe for orthochromatic plates.

## Kodak Anastigmat *f*.4.5



**D**ESIGNED by Kodak scientists and executed by Kodak workmen, the Kodak Anastigmat lens *f*. 4.5 has for its background the reputation and resources of the Eastman Kodak Company. It is a big, fast lens of excellent definition and flat field, built to the highest standards of optical quality.

In terms of negative making the advantages of the Kodak Anastigmat *f*. 4.5 are: It passes an abundance of light, which assures good exposure at high shutter speeds and in dull illumination; its excellent definition means that it makes sharp images and its flat field proves that this sharpness is uniform over the entire area, even when the lens is used at full aperture. The result is a keen, sparkling negative that makes a distinctive print.

The Kodak Anastigmat lens *f*. 4.5 is mounted as shown in the illustration and provided with an iris diaphragm, adjusted by an outer milled ring on which are engraved the *f*. stop numbers.

No.	Size of Plate covered with Stop <i>f</i> . 4.5 Inches	Equivalent Focus Inches	Price, including Excise Tax of Lens in barrel with Iris Diaphragm
30	2 $\frac{1}{4}$ x 3 $\frac{1}{4}$	4 $\frac{3}{8}$	\$ 33.00
31	3 $\frac{1}{4}$ x 4 $\frac{1}{4}$	5 $\frac{1}{2}$	37.50
32	4 x 5	6 $\frac{3}{8}$	43.50
33	3 $\frac{1}{4}$ x 5 $\frac{1}{2}$	7 $\frac{1}{2}$	53.50
34	5 x 7	8 $\frac{1}{2}$	66.50
35	6 $\frac{1}{2}$ x 8 $\frac{1}{2}$	10	115.00
36	8 x 10	12	160.00

## Terms

**T**HE prices in this catalogue are strictly net, except to regular dealers who carry our goods in stock. These prices are subject to change without notice. For the convenience of our customers we recommend that they make their purchases from a dealer in photographic goods, as by so doing they can save both time and transportation charges.

**EASTMAN KODAK COMPANY**

*Folmer & Schwing Department*

**ROCHESTER, N. Y.**



D. C. DONALDSON

TWO STORES

CAMERA & ART SHOP

GIFT SHOP

66 MERRIMACK ST.

232 MERRIMACK ST.

LOWELL, MASS.