

REXO

"Every Click a Picture"



The Rexo Guarantee

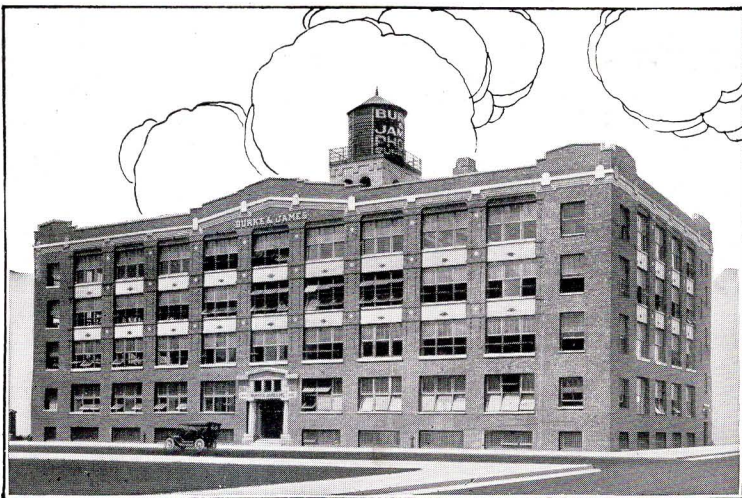
Every Rexo Camera is rigidly inspected and is guaranteed to be mechanically perfect in every detail.

We will replace any part that proves defective in manufacture without charge. This guarantee covers everything but natural wear and misuse.

Burke James, Inc.
CHICAGO



This Trade Mark Identifies Our Products
and Stands as a Guarantee of Their Quality



**Home of BURKE & JAMES, Inc.
Manufacturers of Rexo Cameras, Film, Paper
and Photo Supplies**

REXO Photo Products are manufactured in a modern factory fully equipped with the latest labor-saving machinery, manned by skilled workmen, under the vigilant supervision of master camera builders.

"Every Click a Picture"

In the construction of Rexo Cameras have been incorporated many picture-saving features which can only be obtained in a Rexo. Every camera is tested and re-tested to insure the maximum efficiency. Our slogan, "Every Click a Picture," tells of the frequent successes of Rexo users.

Rexo Speed Film are 25% faster than other films. Under-exposures are largely eliminated, thus greatly increasing your successful pictures.

Rexo Developing Paper offers the proper grade for every negative with a surface to suit every subject.

The Guaranteed Line

Rexo Photo Products are backed by our iron-clad guarantee—the broadest guarantee made by any manufacturer. When you select a camera, be sure it is a master product—A Rexo.

Burke & James Inc

240 E. Ontario St.
Chicago

225 Fifth Ave.
New York

Better Than Memory



THREE marvelous inventions have brought new joys into the life of every one. The phonograph reproduces anything the ear can hear—the wondrous voice of a Caruso or the full toned harmony of a Sousa's band. The piano-player brings into your home the master achievements of a Paderewski or a Hofmann.

But greater than either is the camera—for it easily and accurately records on the sensitive film everything which the eye can see—truly it is *better than memory*.

Picture taking is so simple, so fascinating and so inexpensive that no one should be without a camera—A Rexo.

In summer, on your vacation and picnics, a Rexo will faithfully record the good times. Take it with you on every outing. In winter, sleighing, skating, and snow scenes, in addition to flashlights of your parties, make worth while pictures.

All the year 'round, day or night, there are the home folk, groups of friends, bits of scenery and interesting events, which make wonderful pictures.

How often have you said, "Wouldn't that make a beautiful picture?"—or "If I only had a camera." With a REXO you can permanently record them all and live your happiest hours over again and again.

The superiority of the REXO camera is due to five patented features. You secure all these picture-saving features only in a Rexo.

These five points make REXO the simplest and surest camera made, and aid users in producing pictures of the highest quality with the least possible effort. That's why we say—"Every Click a Picture" the Rexo way.

A Joy to All

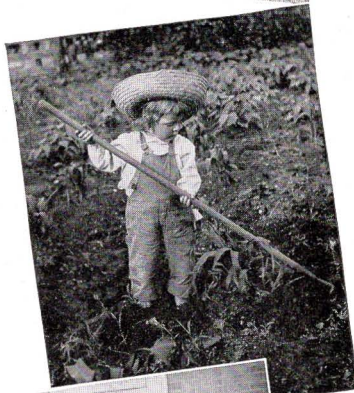
YOU are neither too old nor too young to get a genuine pleasure of the lasting better kind from picture making. It provides an inspiration. The true artist—the love of the beautiful that is in you is given a chance to grow and to become a source of pleasure.

For the little folks the Rexoette Cameras at \$2.00 to \$5.00 will be just the thing and they will be better, happier kiddies on account of them. They provide a recreation that is also an education.

For the older one, Rexos and Rexo Juniors will be a never ending source of happiness. They are so simple to operate that they will never cause you a single worry. Like thousands of others you will "make a pal" out of your Rexo.

On the following pages we are showing you handsome illustrations of all new Rexo Cameras for you to choose from. We tell you about Rexo Paper, too—and a hundred photographic specialties which will add to the joys of the camera enthusiast. These products have done much to simplify photography and they all are guaranteed by the house of Burke & James, Inc.

Start your photographic album today and start it right. Choose the camera that is a master product of men who have spent their lives in the building of cameras. Insist that you get a Rexo, the camera with an iron-clad guarantee.



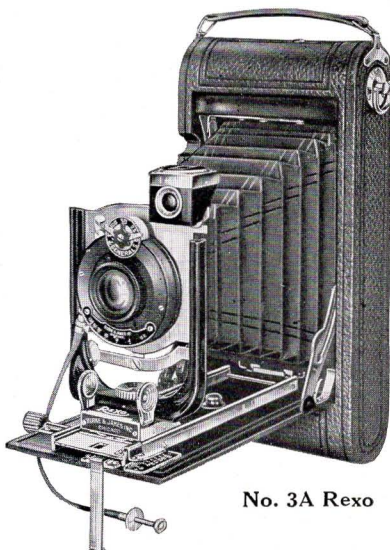
REXO CAMERAS

Rexo Construction

REXO Cameras are the result of close study and practical experience in expert camera building. Every new, practical feature which will aid the user in producing pictures of the highest quality has been incorporated in this line.

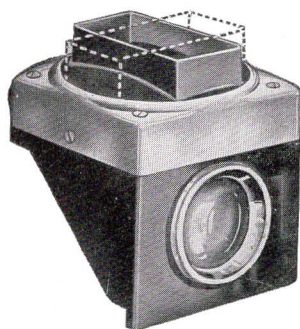
Each size is identical in general construction. The special features embodied in each camera are briefly described below. For detailed information refer to the pages following.

R E X O Cameras simplify photography, correct the user's mistakes and insure the highest percentage of clear, sharp pictures.



No. 3A Rexo

Five Great Rexo Features Guarantee Good Pictures

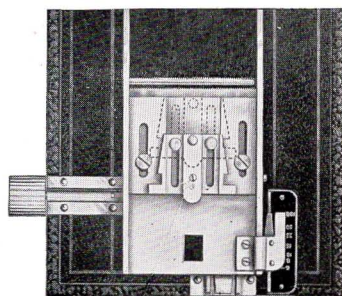


The Rexo Framing Finder

INSTANTLY adjusted for either vertical or horizontal view. Look into it—there's your picture to a hairline—"framed" exactly as it will look—just enough space around subject, the picture correctly composed, etc. Other finders show both vertical and horizontal view at the same time—consequently you have to guess. There's no guesswork with this specially designed Rexo Framing Finder.

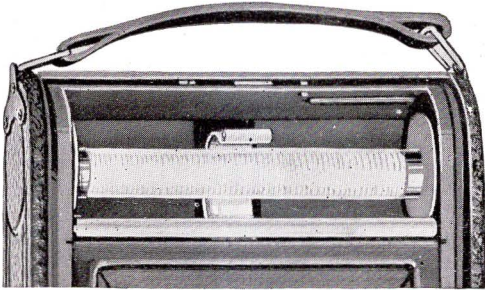
Micrometer Focusing Device

ANY movement of precision, to be accurate, must be mechanical. The human hand is not sure, but this Rexo Rack and Pinion Movement for focusing is automatic and exact. It enables you to get sharp, clear pictures—with twigs and leaves, lace and other intricate things—perfect in detail. Microscopes and other fine scientific instruments are provided with similar Rack and Pinion devices. Here is another Rexo improvement that simplifies your use of the camera.



Page Four

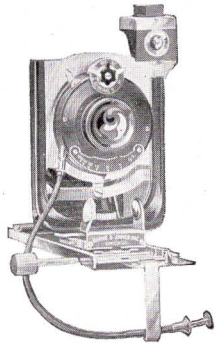
REXO CAMERAS



fingers—then light spoils your pictures before they are taken! You can load a Rexo with gloves on in half the time usually required. No spool centers to pull out!

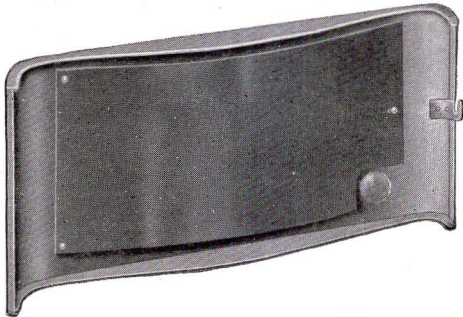
Rigid Standard—Broad Track

MAYBE you never realized that your old camera had a wabby standard running on a narrow track that got out of alignment—spoiled the focusing of your pictures—made surefire focusing impossible. This Rexo U-Shaped Standard is rigid—runs on a wide track—preserves the perfect adjustment. Your hand may be unsteady, but when this Rexo Standard is set, "it is set to stay set." You can depend on it.



Rexo Double Back

ANOTHER exclusive Rexo feature. This is the back that saves the films. It makes successes of pictures that would be flat failures with other cameras. Why? Because that extra plate presses against the film—holds it in place—keeps it an even, flat surface to photograph on. The film cannot



buckle and produce uneven sharpness in your pictures. Rexo back insures sharpness all over the picture.

Remember—

*"Every
Click
a
Picture"*

The REXO Way



"The Rexo Made it Easy."

Page Five

PHOTO SUPPLIES

Lenses

Double Rapid Rectilinear U.S.4

All Rexo Cameras are regularly supplied with double rapid rectilinear lenses of the finest quality. Every lens is scientifically tested by an expert optician for brilliance, definition and covering power, thus insuring clear, sharp pictures.

These lenses are composed of several elementary lenses of dissimilar density and curvature, accurately centered and combined in two combinations which form a corrected rectilinear photographic lens of greater speed or luminosity than is obtainable with the Single Achromatic type.



Rexo Anastigmat F7.7

This is an anastigmat of high quality, somewhat faster than the rapid rectilinear type. It is well corrected for astigmatism and will meet the requirements of those who desire a good anastigmat at a very reasonable price.

Rexo Anastigmat F6.3

This is an anastigmat of about twice the speed of the rapid rectilinear. It is a high grade lens that possesses absolutely sharp definition at full aperture. Because of its greater speed it is to be preferred to the F7.7 Rexo Anastigmat. Supplied on both Regular and Special Rexos.

* Voigtlander Dynar F6

This is a genuine Jena glass anastigmat, speed F6, possessing all the excellent qualities of the higher priced lenses. Because of its compact construction and high optical efficiency it is an ideal lens for the amateur, being equally available for all classes of amateur work. Supplied on Rexo Specials only. *Temporarily out of stock.

Voigtlander Collinear Series III F6.8 and Goerz Dagor F6.8

These are anastigmats of the highest possible quality. They are quite similar in construction, both being symmetrical and working at the same speed. They are adapted to all classes of photographic work and are capable of producing negatives of peerless quality. For those who desire an objective of unrivaled quality, we recommend these lenses. Supplied on Rexo Specials only.

Page Six

REXO CAMERAS

Shutters

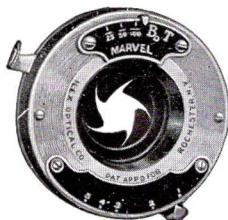
V. P. Ultro and Ultex Shutters.

THESE are special types of Automatic Shutters especially adapted to use on the V. P. Rexo. The Ultro works for time, bulb, 1/25 and 1/50 of a second. The Ultex works for time, bulb, 1/25, 1/50 and 1/100 of a second. Both Shutters are extremely compact in construction and accurate in operation.



Ilex Marvel Shutter

This is an automatic shutter with a five leaf star shaped opening which permits the maximum amount of light to pass through the lens during the exposure. It is adapted for instantaneous exposures of one-hundredth, one-fiftieth and one-twenty-fifth of a second, also time and bulb exposures of any duration. It is supplied on the No. 1A and the No. 3 Rexo Cameras.



Ilex General Shutter

This shutter is superior in construction to the Special and has a five-leaf star shaped opening, giving the highest light efficiency. In addition to time and bulb, it gives accurate instantaneous exposures of 1-100, 1-50, 1-25, 1-10 and 1-5 of a second. The speeds are always accurate as they do not depend on pneumatic pumps but upon a train of wheels connected and geared like the mechanism of a watch. It is supplied on the No. 1A, No. 3 and No. 3A Rexo Cameras.



Ilex Universal Shutter

The description given above for the Ilex General shutter applies also to this model, the only difference being the additional speeds obtained in the Universal which are as follows: 1-150, 1-100, 1-50, 1-25, 1-5, 1/2 and 1 second, also time and bulb of any duration. It is very suitable for photographing rapidly moving objects on account of its high speed. This shutter is supplied on the No. 1A, No. 3 and No. 3A Rexo Cameras.



Ilex Acme Shutter

The Acme is an extraordinary high speed, semi-automatic shutter working at the maximum speed of 1-300 of a second and incorporating every advantage known in between-the-lens shutter construction. The following instantaneous speeds are obtainable, 1-300, 1-200, 1-100, 1-50, 1-25, 1-5, 1-2 and 1 second. Supplied on all Rexo Specials, including the V. P. Rexo Special.



Page Seven

No. 1A Folding Rexo

For Pictures $2\frac{1}{2} \times 4\frac{1}{4}$ Inches

THE 1A Rexo is a camera of superb beauty, mechanically and optically perfect in every detail of construction. The size of the picture is $2\frac{1}{2} \times 4\frac{1}{4}$ inches, one of the most popular of all amateur sizes, being equally available for landscapes, street scenes, groups or single portraits.

The lens supplied on the regular equipment is a tested rapid rectilinear, speed U.S.4 capable of producing clear, sharply defined pictures, free from distortion. A choice of two high grade anastigmat lenses is offered those who desire a camera of higher optical efficiency at a very moderate price.

The shutters supplied are the famous Ilex models, dust and damp proof, sure-operating and accurate.



Specifications

Size of Picture— $2\frac{1}{2} \times 4\frac{1}{4}$ inches. **Film**—Daylight Loading Roll Film, 6 or 12 exposures. (Nos. 425 and 426 or No. 1A F. P. Kodak). **Dimensions**—(closed), $1\frac{13}{16} \times 3\frac{3}{4} \times 8\frac{1}{4}$ inches. **Body**—Reinforced Aluminum, Covered with Genuine Grain Seal Leather. **Back**—Sure-Locking, with Film Aligning Plate. **Standard**—U-Shaped, Operating on Wide Track with Rising and Sliding Adjustments. **Lens**—Rapid Rectilinear U.S.4; Rexo Anastigmat F7.7 or Voigtlander Radiar F6.8. **Shutter**—Ilex Special, Ilex General or Ilex Universal see page 7. **Finder**—Brilliant, Reversible with Rexo Masking Device. **Tripod Sockets**—Two, for Vertical and Horizontal Pictures. **Focusing Scale**—Self-Aligning, Operated by Rack and Pinion. **Weight of Camera**—32 ounces.

Cat. No.

PRICES

Price

A-200	No. 1A Rexo Camera with Ilex Special Shutter and Rapid Rectilinear Lens	-	-	-	\$15.00
A-201	Same, but with Ilex General Shutter	-	-	-	16.00
A-202	Same, but with Ilex Universal Shutter	-	-	-	17.50
A-203	No. 1A Rexo Camera with Ilex General Shutter and Rexo F7.7 Anastigmat Lens	-	-	-	21.00
A-204	Same, but with Ilex Universal Shutter	-	-	-	22.50
A-206	Same, but with Rexo F6.3 Anastigmat Lens	-	-	-	34.00
A-572	Plush Lined Leather Carrying Case, with Strap	-	-	-	2.70
D-425	6-Exposure Roll Film, $2\frac{1}{2} \times 4\frac{1}{4}$ inches	-	-	-	.25
D-426	12-Exposure Roll Film, $2\frac{1}{2} \times 4\frac{1}{4}$ inches	-	-	-	.50

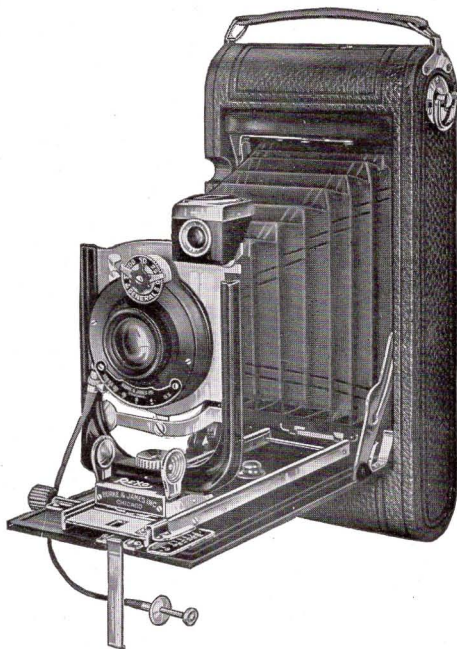
Page Eight

No. 3 Folding Rexo

For Pictures $3\frac{1}{4} \times 4\frac{1}{4}$ Inches

THE No. 3 Rexo Camera is a handsome, compact camera making pictures $3\frac{1}{4} \times 4\frac{1}{4}$, a size that is justly popular, being adapted to all classes of amateur work, as well as being particularly suitable for lantern slides by contact. The lens and shutter equipment is identical with that supplied on the 1A Rexo.

The No. 3 Rexo incorporates every feature essential to good results. The camera is handsome in appearance, optically and mechanically correct and accurate. In addition to the regular lens equipment, the No. 3 is supplied, fitted with either a Rexo Anastigmat F7.7 or a Voigtlander Radiar F6.8 as shown in price list.



Specifications

Size of Picture— $3\frac{1}{4} \times 4\frac{1}{4}$ inches. **Film**—Daylight Loading Roll Film, 6 or 12 exposures, (Nos. 435 and 436 or No. 3 F. P. Kodak Film). **Dimensions**—(Closed), $1\frac{13}{16} \times 4\frac{3}{4} \times 8\frac{1}{4}$ inches. **Body**—Reinforced Aluminum, Covered with Genuine Seal Grain Leather. **Back**—Sure-Locking with Film Aligning Plate. **Standard**—U-Shaped, Operating on Wide Track with Rising or Sliding Adjustments. **Lens**—Rapid Rectilinear U.S.4; Rexo Anastigmat F7.7 or Voigtlander Radiar F6.8. **Shutter**—Ilex Special, Ilex General or Ilex Universal, see page 7. **Finder**—Brilliant, Reversible with Rexo Masking Device. **Tripod Sockets**—Two, for Vertical and Horizontal Pictures. **Focusing Scale**—Self-Aligning, Operated by Rack and Pinion. **Weight of Camera**—36 ounces.

PRICES

Cat. No.		Price
A-220	No. 3 Rexo Camera with Ilex Special Shutter and Rapid Rectilinear Lens	\$17.50
A-221	Same, but with General Shutter	18.50
A-222	Same, but with Universal Shutter	20.00
A-223	No. 3 Rexo Camera with Ilex General Shutter and Rexo F7.7 Anastigmat Lens	23.50
A-224	Same, but with Ilex Universal Shutter	25.00
A-226	Same, but with Rexo F6.3 Anastigmat Lens	37.50
A-573	Plush Lined Leather Carrying Case with Strap	3.00
D-430	6-Exposure Roll Film, $3\frac{1}{4} \times 4\frac{1}{4}$ inches	.35
D-431	12-Exposure Roll Film, $3\frac{1}{4} \times 4\frac{1}{4}$ inches	.70

Page Nine

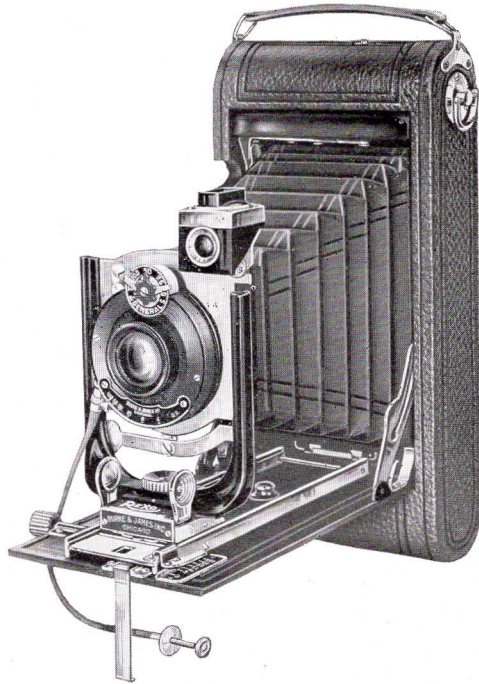
No. 3A Folding REXO

For Pictures $3\frac{1}{4} \times 5\frac{1}{2}$ Inches

THE 3A REXO Camera takes pictures $3\frac{1}{4} \times 5\frac{1}{2}$ inches, the popular post card size. It embodies every adjustment which will aid the amateur in producing successful pictures with greatest ease and certainty.

Like the No. 1A and No. 3 REXO it is equipped with a rigid one-piece U-shaped lens standard, affording the maximum rising and sliding movement. The finder, a special REXO feature, has a reversible walled top, which is instantly adjusted for either vertical or horizontal pictures.

The optical equipment includes a choice of two shutters and three lenses. Every lens is rigidly tested for covering power and definition, thus insuring the owner of a REXO Camera of securing quality results from the very start.



Specifications

Size of Picture— $3\frac{1}{4} \times 5\frac{1}{2}$ inches. **Film**—Daylight Loading Roll Film, 6 or 10 exposures (Nos. 445 and 446 or No. 3A F. P. Kodak). **Dimensions**—(closed), 1 $13/16 \times 4\frac{5}{8} \times 9\frac{1}{2}$ inches. **Body**—Reinforced Aluminum, Covered with Genuine Seal Grain Leather. **Back**—Sure-Locking with Film-Aligning Plate. **Standard**—U-Shaped, Operating on Wide Track with Rising and Sliding Adjustments. **Lens**—Rapid Rectilinear U.S.4; REXO Anastigmat F7.7 or Voigtlander Radiar F6.8. **Shutter**—Ilex General or Ilex Universal, see page 7. **Finder**—Brilliant, Reversible with REXO Masking Device. **Tripod Sockets**—Two, for Vertical and Horizontal Pictures. **Focusing Scale**—Self-Aligning, with Rack and Pinion. **Wt.** 42 oz.

Cat. No.

PRICES

		Price
A-240	No. 3A REXO with General Shutter and R. R. Lens -	\$20.00
A-241	Same, but with Ilex Universal Shutter -	22.50
A-242	No. 3A REXO with General Shutter and REXO F7.7 Lens -	25.00
A-243	Same, but with Ilex Universal Shutter -	27.50
A-245	Same, but with REXO F6.3 Anastigmat Lens -	40.00
A-574	Plush Lined Leather Carrying Case, with Strap -	3.20
D-445	6-Exposure Roll Film, $3\frac{1}{4} \times 5\frac{1}{2}$ inches -	.40
D-446	10-Exposure Roll Film, $3\frac{1}{4} \times 5\frac{1}{2}$ inches -	.70

Page Ten

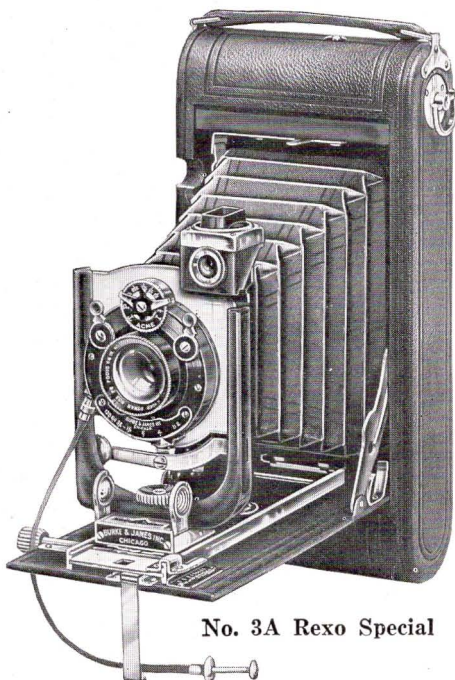
Nos. 1A, 3 and 3A Rexo Specials

THESE are De Luxe models of the regular Rexo Cameras—a master-piece of the camera makers' art. In appearance the Rexo Special is superb; in construction, compact, rigid and mechanically perfect; in efficiency, it leaves nothing to be desired.

The optical equipment of the Rexo Special is of the very highest grade, comprising a choice of the famous Voigtlander or Goerz anastigmat lenses in an Ilex Acme Shutter. All the exclusive Rexo features are embodied in its construction, which together with its elegant finish and high optical equipment, makes it a perfect camera.

The body is covered with genuine Persian Morocco leather and the finish throughout is magnificent. No. 1 Compound Shutter supplied on 3A Rexo for \$5.00 extra.

The general specifications, with the exceptions noted above, are the same as for the regular models.



No. 3A Rexo Special

PRICES

	Cat. No.	No. 1A 2 1/2 x 4 1/4	Cat. No.	No. 3 3 1/4 x 4 1/4	Cat. No.	No. 3A 3 1/4 x 5 1/2
Folding Rexo Special with Rexo Anastigmat F6.3 and Ilex Acme Shutter.....	A-210 1/2	\$44.00	A-230 1/2	\$47.50	A-250 1/2	\$50.00
Same with Voigtlander Collinear Anastigmat F6.8.....	A-212	50.00	A-232	52.50	A-252	55.00
Same with Goerz Dagor Anastigmat F6.8.....	A-213	61.00	A-233	66.00	A-253	71.00
Plush Lined Carrying Case with Strap.....	A-572	2.70	A-573	3.00	A-574	3.20
6-Exposure Roll Film	D-425	.25	D-430	.35	D-445	.40
12-Exposure Roll Film	D-426	.50	D-431	.70	D-446	10ex..70

Rexo Junior Cameras

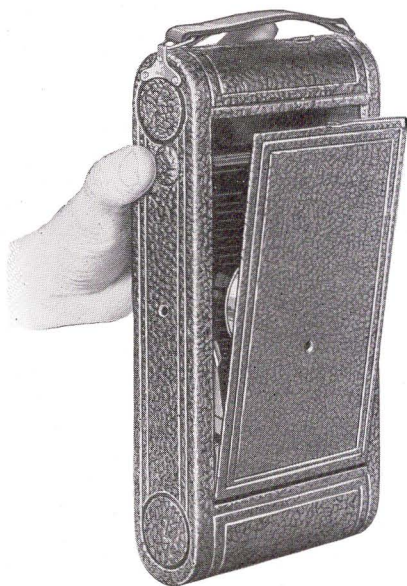
Five Popular Sizes

Construction

IN designing and constructing the Rexo Junior Line we have kept in view the public demand for an efficient daylight loading roll film camera at a very moderate price.

In general characteristics each size of the Rexo Junior Line is identical. They are constructed to open vertically, have fully rounded ends giving them the most attractive appearance and adding to the ease with which they can be slipped into the pocket. They are supplied in four popular sizes. For full description see pages 14 to 18

The body of the camera is constructed almost entirely of re-in-



Vertical Opening

forced aluminum black enameled with the wearing parts of brass nickel-plated and polished. They are covered with the finest quality of triple coated Karatol extra strong and durable, vastly superior to the grades of leather used on cameras selling at much higher prices.

Concealed Spool Holding Device

One of the new and exclusive features is the concealed spool holding device which permits Rexo Jrs. to be loaded in one-half the time required to load other cameras. Furthermore, the film winds smoothly and is always perfectly centered.

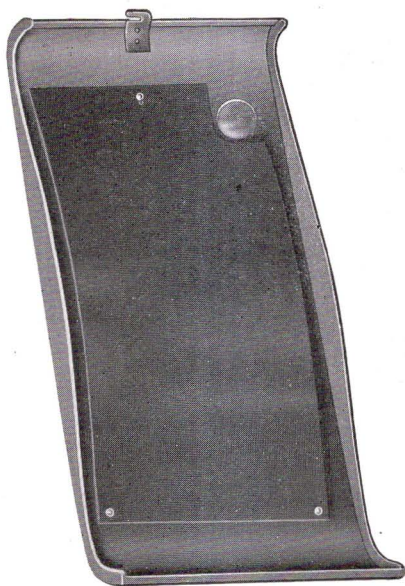
Film Aligning Back

Another important advantage is the sure locking back which cannot come off accidentally. The back has a film aligning plate which holds the entire length of the exposed film in the exact focal-plane, absolutely without curl or buckle. This insures sharpness over the entire picture.

Page Twelve



New Spool Holding Device



Film Aligning Plate

Each camera is equipped with a brilliant reversible dust-proof finder and two tripod sockets for taking either vertical or horizontal pictures.

The automatic focusing device insures easy and accurate focusing. Set the scale pointer at the required distance and extend the bellows, it will lock automatically. The bed track is extra wide insuring rigidity and perfect optical alignment.

Lens and Shutter Equipment

The Rexo Juniors are supplied fitted with either high grade universal focus achromatic meniscus lens or a double rapid rectilinear. Each lens is rigidly tested and accurately adjusted to the focusing scale, insuring clear, sharp pictures.

They are fitted with an automatic Rexo Junior Ilex Shutter, a dust proof accurate shutter that never fails to operate. Each shutter is thoroughly tested and is equipped with flexible wire release of the latest pattern.

The Rexo Junior Shutters are supplied with a new, simplified aperture scale, marked from No. 1 to No. 4. No. 1 is the largest aperture and each succeeding number indicates a smaller aperture which requires double the exposure of the preceding number. Thus No. 2 aperture requires twice the exposure which is correct for No. 1, and No. 3 twice that of No. 2, etc.

The No. 1A, ($2\frac{1}{2} \times 4\frac{1}{4}$), No. 2C, ($2\frac{7}{8} \times 4\frac{7}{8}$), No. 3, ($3\frac{1}{4} \times 4\frac{1}{4}$) and the No. 3A, ($3\frac{1}{4} \times 5\frac{1}{2}$) shutters provide time, bulb and three instantaneous speeds, $1/25$, $1/50$, and $1/100$ of a second, while the No. 1, ($2\frac{1}{4} \times 3\frac{3}{4}$) shutter has two speeds, $1/25$ and $1/50$ of a second as well as time and bulb exposures of any duration.

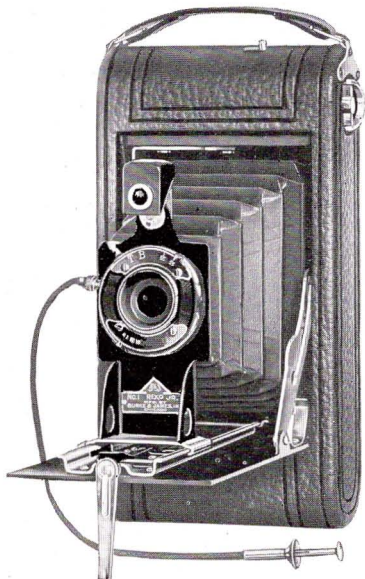
These cameras are excellently constructed, handsome in appearance, simple in operation, and there are no instruments on the market at the price which can be compared with them in beauty, construction and utility. They are highly efficient instruments, capable of producing excellent pictures and must be seen to be fully appreciated.

Full descriptions, illustrations and prices of these exceptional cameras will be found on pages 15 to 18.

Page Thirteen

No. 1 Rexo Junior Camera

For Pictures $2\frac{1}{4} \times 3\frac{1}{4}$ Inches



Universal Focus Lens

WHEN you see this compact, efficient folding pocket camera you will marvel at the extraordinary value which it represents.

It takes pictures $2\frac{1}{4} \times 3\frac{1}{4}$ inches, one of the most popular of the amateur sizes.

The No. 1 Rexo Junior Camera opens vertically and has fully rounded ends. It is equipped with the new concealed spool holding device which insures quick loading, and the sure locking back and the film aligning plate which holds the entire strip of the exposed film in the exact focal plane.

Equipped with either the universal focus or rapid rectilinear lens it offers the amateur an ideal pocket camera capable of producing clear, sharp negatives from which beautiful enlargements can be made.

The shutter is an automatic Rexo Junior Ilex, fitted with flexible wire release and a simplified aperture scale.

The No. 1 Rexo Junior is so small that it can be easily carried in the hip pocket or in a lady's hand bag.

SPECIFICATIONS.

Size of Picture— $2\frac{1}{4} \times 3\frac{1}{4}$ inches. **Film**—Daylight Loading Roll Films, 6 Exposures (No. 415 or No. 2 Brownie Film). **Dimensions of Camera (Closed)**— $1\frac{7}{16} \times 3\frac{5}{8} \times 7\frac{1}{4}$ inches. **Lens**—Universal Focus Achromatic Meniscus or Rapid Rectilinear. **Shutter**—Rexo Junior Ilex, Automatic for Time, Bulb, and Two Instantaneous Speeds. **Finder**—Brilliant, Reversible, and Dust Proof. **Tripod Sockets**—Two for Vertical or Horizontal Pictures. **Weight of Camera**—19 ounces.

PRICES.

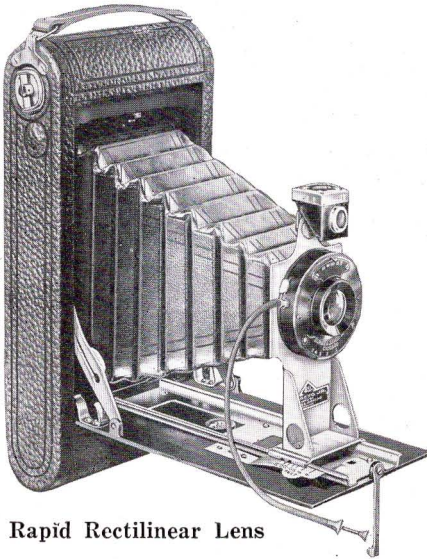
Cat. No.

A-75	No. 1 Rexo Junior Camera with Universal Focus Lens	- -	\$7.00
A-76	No. 1 Rexo Junior Camera with Rapid Rectilinear Lens	- - - -	8.50
A-590	Black Leather Carrying Case with Strap	- - -	2.70
D-415	6 Exposure Roll Film, $2\frac{1}{4} \times 3\frac{1}{4}$	- - - -	.20

Page Fourteen

No. 1A Rexo Junior Camera

For Pictures $2\frac{1}{2} \times 4\frac{1}{4}$ Inches



Rapid Rectilinear Lens

THE No. 1A Rexo Junior takes pictures $2\frac{1}{2} \times 4\frac{1}{4}$. This is one of the most popular amateur sizes, it being equally available for landscapes, groups, and home portraits.

The No. 1A Rexo Junior opens vertically and embodies every feature necessary for successful results. It is extremely compact, handsome in appearance, and simple in operation.

Equipped with either a universal focus or rapid rectilinear lens it is an admirable instrument for the beginner, who desires an efficient, easily operated camera at a very moderate price. All lenses

are carefully tested by expert opticians and will produce clear, sharp negatives from which beautiful prints and enlargements can be made.

The shutter is an automatic Rexo Junior Ilex, fitted with flexible wire release and simplified aperture scale.

SPECIFICATIONS

Size of Picture— $2\frac{1}{2} \times 4\frac{1}{4}$ inches. Films—6 or 12 exposures (No. 425 or 426 Film, or No. 1A Folding Pocket Kodak). Dimensions of Camera (Closed)— $1\frac{3}{4} \times 3-13/16 \times 8\frac{1}{4}$ inches. Lens—Universal Focus, Achromatic Meniscus or Rapid Rectilinear. Shutter—Rexo Junior Ilex Automatic for Time, Bulb, and Three Instantaneous Speeds. Finder—Large Brilliant, Reversible and Dust Proof. Tripod Sockets—Two for Vertical and Horizontal Pictures. Weight of Camera—26 ounces.

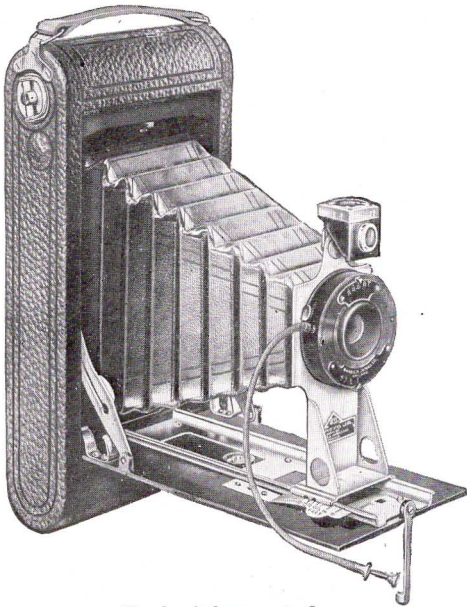
PRICES

Cat. No.					
A- 77	No. 1A Rexo Junior Camera with Universal Focus Lens	- -			\$9.00
A- 78	No. 1A Rexo Junior Camera with Rapid Rectilinear Lens	- -	- -	- -	11.00
A-591	Black Leather Carrying Case with Strap	- -	- -	- -	2.70
D-425	6 Exposure Roll Film, $2\frac{1}{2} \times 4\frac{1}{4}$ inches	- -	- -	- -	.25
D 426	12 Exposure Roll Film, $2\frac{1}{2} \times 4\frac{1}{4}$ inches	- -	- -	- -	.50

Page Fifteen

REXO CAMERAS

Nos. 2C and 3 Rexo Junior Cameras



Single Achromatic Lens

The No. 2C Rexo Junior Camera takes pictures $2\frac{7}{8} \times 4\frac{7}{8}$, a new and popular size, suitable for all kinds of amateur pictures. The No. 3 Rexo Junior Camera takes pictures $3\frac{1}{4} \times 4\frac{1}{4}$, an ever popular size of pleasing proportions, also especially suitable for making lantern slides by contact. Both cameras are very compact and can be readily carried in the coat pocket. They embody every accessory necessary for quick and accurate work. Both have the new Rexo Junior concealed spool holding device, film aligning plate and quick focusing scale.

The No. 2C and 3 Rexo Juniors are handsome, efficient cameras at a most moderate price. They are supplied with either universal focus or rapid

rectilinear lens of high quality, together with an accurate Rexo Junior Ilex Shutter with the new simplified aperture scale and flexible wire release.

SPECIFICATIONS

SIZE OF PICTURE—No. 2C, $2\frac{7}{8} \times 4\frac{7}{8}$ and No. 3, $3\frac{1}{4} \times 4\frac{1}{4}$ inches. **FILM**—Each Uses Daylight Loading Roll Films; No. 2C takes 6 or 10 Exposures (Nos. 436 or 438 Rexo Film or No. 2C Kodak). No. 3 takes 6 or 12 Exposures (Nos. 430 or 431 Rexo or No. 3 F. Kodak). **DIMENSIONS OF CAMERA (Closed)**—No. 2C— $1\frac{3}{16} \times 4\frac{1}{4} \times 9\frac{1}{16}$; No. 3— $1\frac{3}{4} \times 4\frac{1}{2} \times 8\frac{3}{4}$ inches; **LENS**—Universal Focus Achromatic Meniscus or Rapid Rectilinear. **SHUTTER**—Rexo Junior Ilex, Automatic for Time, Bulb, and Three Instantaneous Speeds. **FINDER**—Large, Brilliant, Reversible and Dust-Proof. **TRIPOD SOCKETS**—Two, for Vertical or Horizontal Pictures. **WEIGHTS OF CAMERAS**—No. 2C—31 ounces. No. 3, 29 ounces.

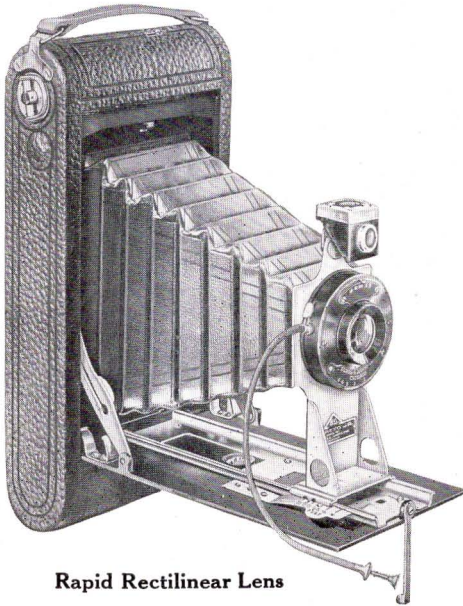
PRICES

	Cat. No.	No. 2C $2\frac{7}{8} \times 4\frac{7}{8}$	Cat. No.	No. 3 $3\frac{1}{4} \times 4\frac{1}{4}$
Rexo Junior with Achromatic Lens	A- 83	\$10.00	A- 79	\$10.00
Rexo Junior with Rapid Rectilinear	A- 84	12.00	A- 80	12.00
Leather Carrying Case.....	A-594	3.00	A-592	3.00
6 Exposure Roll Film.....	D-436	.35	D-430	.35
10 Exposure Roll Film.....	D-438	.60	D-431 (12Ex)	.70

Page Sixteen

No. 3A Rexo Junior Camera

For Pictures $3\frac{1}{4} \times 5\frac{1}{2}$ Inches



Rapid Rectilinear Lens

NEVER before has the amateur been offered a folding, round end, post card camera at the prices at which the Rexo Juniors are sold. Think of securing a beautiful, efficient daylight loading, post card size, roll film camera at the surprisingly low prices of \$10.00 and \$12.00. The No. 3A Rexo Junior is an epoch-making camera. It represents values never before thought possible. Every special Rexo Junior feature is embodied in this great camera. Read full details of the concealed spool holding device, the film aligning back, and the quick and accurate focusing scale on pages 12 and 13.

It is equipped with either a universal focus or rapid rectilinear lens and a Rexo Junior Ilex Shutter fitted with flexible wire release.

SPECIFICATIONS

Size of Picture— $3\frac{1}{4} \times 5\frac{1}{2}$ inches (Post Card); **Film**—Uses Daylight Loading Roll Film, 6 or 10 Exposures (No. 445 and 446 or 3A Folding Pocket Kodak); **Dimensions of Camera, (Closed)**— $1\frac{3}{4} \times 4\frac{5}{8} \times 9\frac{1}{2}$ inches; **Lens**—Single Achromatic Meniscus or Double Rapid Rectilinear; **Shutter**—Rexo Junior Ilex Automatic for Time, Bulb and Three Instantaneous Exposures; **Finder**—Large Brilliant, Reversible and Dust-Proof; **Tripod Sockets**—(Two) for Vertical and Horizontal Pictures; **Weight of Camera**—32 Ounces.

PRICES

Cat. No.		Price
A- 81	No. 3A Rexo Junior Camera with Achromatic Lens - - - -	\$11.00
A- 82	No. 3A Rexo Junior Camera with Rapid Rectilinear Lens - -	13.00
A-593	Black Sole Leather Carrying Case with Strap - - -	3.20
D-445	6-Exposure Roll Film, $3\frac{1}{4} \times 5\frac{1}{2}$ inches - - -	.40
D-446	10-Exposure Roll Film, $3\frac{1}{4} \times 5\frac{1}{2}$ inches - - -	.70

Page Seventeen

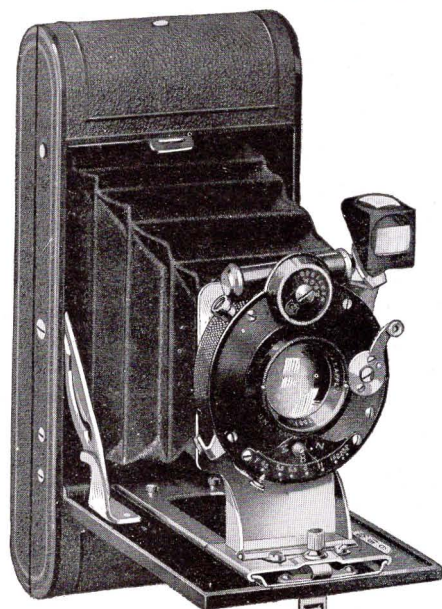
Vest Pocket Rexo

For Pictures $1\frac{5}{8} \times 2\frac{1}{2}$ Inches.

The V. P. Rexo is a marvel of compactness and photographic efficiency. It weighs only 8 ounces and measures when closed $1 \times 2\frac{3}{8} \times 5\frac{1}{8}$; a true vest pocket camera, conveniently carried in any pocket, lady's muff or hand-bag. The picture is $1\frac{5}{8} \times 2\frac{1}{2}$, a popular and practical size.

The V. P. Rexo is equipped with the famous Rexo one-piece standard operating on a wide track, the last word in rigidity. The ingenious finder is a radical departure, being self-framing, only those objects which will be included in the picture are visible in the finder whether used vertically or horizontally. Every part locks perfectly, insuring permanent alignment at all times. This means clear, sharp pictures which can be readily enlarged to any desired size.

The optical equipment leaves nothing to be desired, it being supplied in a great variety of lenses from the fixed focus achromatic to the most rapid anastigmat, while no less than four types



V. P. Rexo Cat. No. A-358

of shutters are available. See specifications and price list for details.

The case of the V. P. Rexo marks a new advance in miniature cameras. It is made of a new substance known as Bakelite—strong, light and durable, far more substantial than hard rubber and more beautiful than any metal finish yet made use of. The ideal camera for the soldier.

The V. P. Rexo is a gem. A camera for every day use that you can have with you at all times, ready for every photographic opportunity.

SPECIFICATIONS

SIZE OF PICTURE— $1\frac{5}{8} \times 2\frac{1}{2}$ inches. FILM—Daylight Loading Roll Films, 8 exposure (No. 407 Rexo or V. P. Kodak). LENS—Universal Focus Achromatic Meniscus U. S. 16; Rapid Rectilinear U. S. 4, Rexo Anastigmat F7.5; Rexo Anastigmat F6.3; Goerz Dagor F6.8, and Goerz Dogmar F4.5. SHUTTERS—Ultro, Time, Bulb, $\frac{1}{25}$ and $\frac{1}{50}$ Seconds; Ultex, Time, Bulb, $\frac{1}{25}$, $\frac{1}{50}$ and $\frac{1}{100}$ Second; No. 00 Ilex Acme, Time, Bulb, $\frac{1}{2}$, $\frac{1}{5}$, $\frac{1}{10}$, $\frac{1}{25}$, $\frac{1}{50}$, $\frac{1}{100}$ and $\frac{1}{300}$ Second; No. 00 Compound, Time, Bulb, $\frac{1}{2}$, $\frac{1}{5}$, $\frac{1}{10}$, $\frac{1}{25}$, $\frac{1}{50}$, $\frac{1}{100}$, $\frac{1}{200}$ and $\frac{1}{300}$ Second. FINDER—Rexo Self-Framing, Reversible and Dust-Proof. WEIGHT—8 ounces.

PRICES

Cat. No.		
A-350	V. P. Rexo with Universal Focus, Achromatic Lens and Ultro Shutter.	\$ 7.50
A-351	Same, with Rapid Rectilinear Lens.	9.00
A-352	Same, with Rexo Anastigmat F7.5 and Ultex Shutter.	16.00
A-354	Same, with Rexo Anastigmat F6.3 and Ilex Acme Shutter.	30.00
A-355	Same, with Goerz Dagor F6.8 and Ilex Acme Shutter.	52.50
A-356	Same, as above but with Compound Shutter.	55.00
A-357	Same, with Goerz Dogmar F4.5 and Ilex Acme Shutter.	53.50
A-358	Same, as above but with Compound Shutter.	56.00
A-585	Combination Leather Carrying Case and Holster.	1.75
D-407	Rexo Record Speed Film, $1\frac{5}{8} \times 2\frac{1}{2}$, 8 exposures.	.20

Rexo Junior Specials

Five Popular Sizes

The enormous popularity of the Rexo Junior Line has given rise to a demand for a higher grade camera of similar construction. The Rexo Junior Specials supply this demand. They have a genuine leather bellows and covering, and, excepting the No. 1, are equipped with the famous Rexo Masking Finder.

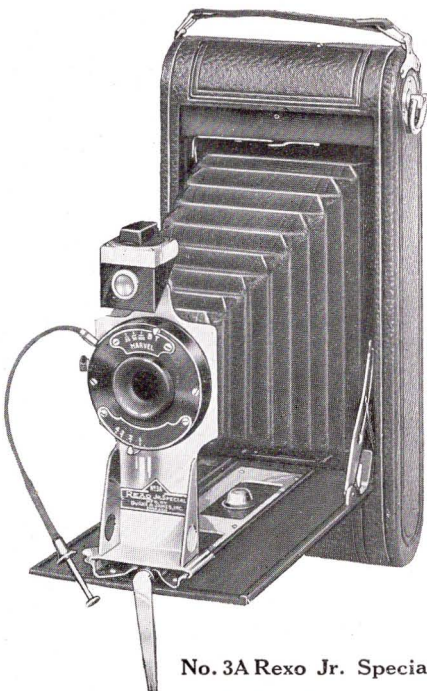
This series comprises five sizes: Nos. 1, 1A, 2C, 3 and 3A, equipped with either single Achromatic Lens U. S. 16, Double Rapid Rectilinear Lens U. S. 4 (F.8) or Rexo Anastigmat F7.7.

For those desiring an excellent camera at a medium price the Rexo Junior Specials are recommended.

SPECIFICATIONS

BODY—Reinforced Aluminum Construction, Covered with Genuine Seal Grain Leather. **BELLOWS**—Genuine leather. **FILM**—Uses Daylight Loading Roll Films, Same Numbers and Sizes as the corresponding Rexo Junior Cameras. **DIMENSIONS**—Same as corresponding Rexo

Junior Cameras. **LENS**—Achromatic Meniscus U. S. 16, Rapid Rectilinear U. S. 4 (F.8) or Rexo Anastigmat F7.7. **SHUTTER**—Ilex Marvel, with Flexible Wire Release, Automatic for Time, Bulb and 1/25, 1/50 and 1/100 second exposures. **FINDER**—Rexo Masking (see page 5 for description). **TRIPOD SOCKETS**—Two, for Vertical or Horizontal Pictures. **WEIGHT OF CAMERA**—Same as corresponding Rexo Junior Cameras.



No. 3A Rexo Jr. Special

PRICES

PRICES

		No. 1		No. 1A
	Cat. No.	2 $\frac{1}{4}$ x3 $\frac{1}{4}$	Cat. No.	2 $\frac{1}{2}$ x4 $\frac{1}{4}$
Rexo Junior Special with Achromatic Lens....	A-300	\$ 8.50	A-305	\$10.50
Same, but with Rapid Rectilinear Lens.....	A-301	10.00	A-306	12.50
Same, but with Rexo Anastigmat F7.7 Lens...	A-302	14.50	A-307	17.50
Leather Carrying Case.....	A-590	2.70	A-591	2.70
6 Exposure Rexo Film.....	D-415	.20	D-425	.25
12 Exposure Rexo Film.....			D-426	.50

	Cat. No.	No. 2C		No. 3		No. 3A
		2 $\frac{7}{8}$ x4 $\frac{7}{8}$	Cat. No.	3 $\frac{1}{4}$ x4 $\frac{1}{4}$	Cat. No.	3 $\frac{1}{4}$ x5 $\frac{1}{2}$
Rexo Junior Special with Achromatic Lens.....	A-310	\$12.00	A-315	\$12.00	A-320	\$13.00
Same, but with Rapid Rectilinear Lens.....	A-311	14.00	A-316	14.00	A-321	15.00
Same, but with Rexo Anastigmat F7.7 Lens....	A-312	18.50	A-317	18.50	A-322	20.00
Leather Carrying Case...	A-594	3.00	A-592	3.00	A-593	3.20
6 Exposure Rexo Films..	D-436	.35	D-430	.35	D-445	.40
10 Exposure Rexo Film...	D-438	.60	D-431 (12Ex)	.70	D-446	.70

Rexoette Cameras



REXOETTE Cameras are made in five different sizes—the No. 2 Rexoette makes pictures $2\frac{1}{4} \times 3\frac{1}{4}$; the No. 2A Rexoette, $2\frac{1}{2} \times 4\frac{1}{4}$; No. 2C Rexoette, $2\frac{7}{8} \times 4\frac{7}{8}$; the No. 3 Rexoette, $3\frac{1}{4} \times 4\frac{1}{4}$; and the No. 3A Rexoette, $3\frac{1}{4} \times 5\frac{1}{2}$, postal card size.

All of these cameras are constructed on exactly the same principle, the only difference being in their size. They are daylight loading and take the popular roll film. The new spool holding device insures quick loading and smooth winding of the film.

Rexoette Cameras are very compact, light and attractive in appearance, and make exceedingly sharp and brilliant pictures with the least possible effort, as they require no focusing. Any boy or girl can use the Rexoette successfully. It is suitable for photographing landscapes, street scenes, groups and portraits.

All Rexoette Cameras, except the No. 2, which has a Meniscus Lens, are fitted with an accurately adjusted, fine universal focus, achromatic lens with three diaphragm stops, automatic metal mounted shutter for both time and instantaneous exposures. The back has a reinforced hinge with metal corner catches, absolutely light-tight when closed.

The Nos. 2A, 2C, 3 and 3A are equipped with two metal bound brilliant view finders of a large size, for vertical or horizontal pictures, insuring a clear, brilliant image of the subject to be photographed. The No. 2 Rexoette is equipped with two metal bound ground glass finders. Each camera is

REXO CAMERAS

strongly built, and absolutely light-tight. The interior divisions and the body are made of selected kiln-dried Pennsylvania white wood, covered with fine, durable, heavy Karatol, embossed and finished so that it is almost impossible to distinguish it from genuine leather. Karatol is more durable than any of the inexpensive grades of leather.

Each Rexoette Camera is equipped with a ruby window to indicate the number of exposures that have been made. The outside metal parts are made of polished brass, beautifully nickel-plated or ebonized. The handle strap is made of solid leather, of a comfortable size. It is fitted with non-reversible winding key. The No. 2 Rexoette uses $2\frac{1}{4} \times 3\frac{1}{4}$ roll films (No. 415 Rexo or No. 2 Brownie); 2A Rexoette uses $2\frac{1}{2} \times 4\frac{1}{4}$ roll films (425 Rexo or No. 1A Folding Kodak); No. 2C Rexoette uses $2\frac{7}{8} \times 4\frac{7}{8}$ roll film (436 Rexo or 2C Kodak Jr.); No. 3 Rexoette uses $3\frac{1}{4} \times 4\frac{1}{4}$ roll films (430 Rexo or No. 3 Folding Pocket Kodak); No. 3A Rexoette uses $3\frac{1}{4} \times 5\frac{1}{2}$ roll films (445 Rexo or No. 3A Folding Pocket Kodak). See page 23 for catalog numbers and prices of the films.

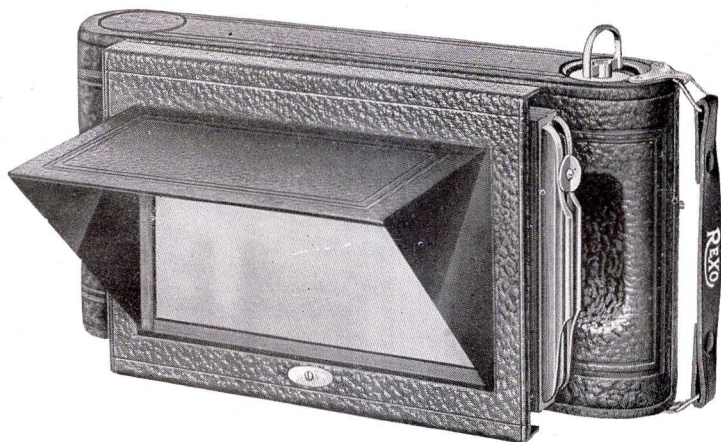
Their utter simplicity of operation makes Rexoette Cameras ideal for picture-loving boys and girls. They are recommended to those who desire a substantial, neat and accurate camera at a low price.

Cat. No.		Size of Picture	Size of Camera	Weight in Ounces	Prices
A-98	No. 2 Rexoette	$2\frac{1}{4} \times 3\frac{1}{4}$	$3\frac{5}{8} \times 4\frac{1}{4} \times 5\frac{1}{8}$	16 $\frac{1}{2}$	\$2.00
A-1	No. 2A Rexoette	$2\frac{1}{2} \times 4\frac{1}{4}$	$3\frac{7}{8} \times 5\frac{1}{4} \times 6\frac{5}{16}$	23 $\frac{1}{2}$	3.00
A-99	No. 2C Rexoette	$2\frac{7}{8} \times 4\frac{7}{8}$	$4\frac{1}{8} \times 6 \times 7\frac{3}{16}$	28	4.00
A-2	No. 3 Rexoette	$3\frac{1}{4} \times 4\frac{1}{4}$	$4\frac{3}{8} \times 5\frac{1}{4} \times 6\frac{1}{2}$	24 $\frac{1}{2}$	4.00
A-3	No. 3A Rexoette	$3\frac{1}{4} \times 5\frac{1}{2}$	$4\frac{3}{4} \times 6\frac{5}{8} \times 7\frac{1}{8}$	31	5.00



Exact Size of Picture Made with No. 2A Rexoette Camera

Rexo Plate Attachment



MADE in two sizes, $3\frac{1}{4} \times 4\frac{1}{4}$ and $3\frac{1}{4} \times 5\frac{1}{2}$ inches, for No. 3 and 3A Folding Rexo and Junior Cameras. It slips on the back of the camera in precisely the same manner as the regular back, thus adapting the camera to the use of dry plates. It is fitted with a spring-actuated ground glass and focusing hood and takes the regulation double plate holder. The attachment for the Junior Cameras does not have the side flaps on the focusing hood, but in other respects its construction is as shown in the illustration.

The Attachments for the regular Rexo Cameras are covered with genuine seal grain leather, for the Rexo Specials with Persian Morocco and for the Juniors with the finest Karatol, matching in each case the covering of the camera on which it is to be used. One Ingento double plate holder is included in the price.

PRICES

	Cat.No.	$3\frac{1}{4} \times 4\frac{1}{4}$	Cat.No.	$3\frac{1}{4} \times 5\frac{1}{2}$
Rexo Plate Attachment (Regular)	A-490	\$3.50	A-491	\$3.50
Rexo Plate Attachment (Special)	A-493	4.00	A-494	4.00
Junior Plate Attachment -	A-496	2.50	A-497	2.50
Extra Double Plate Holder -	A-527	.70	A-528	.70

Ideal Telemeter

For correctly measuring the distance between the camera and the subject. Insuring the perfect adjustment of the focusing scale and thereby securing sharp pictures. Made of brass and nickel-plated.

By looking through the tube at the base of the subject, the indicator will show the proper distance at which to set the focusing scale.

Cat. No. L-1124 Price, each\$0.50



REXO
CAMERAS

REXO RECORD FILM

"The Film with the Recording Feature"

Rexo Record Films possess in the highest degree every quality desirable in a roll film. They are extremely rapid, fully orthochromatic, non-halation and non-curling. In addition they possess a practical advantage not offered by any other film on the market. Ample space, a full quarter of an inch, is provided between each negative for writing thereon full, permanent data relating to each picture. This record is made with ordinary black ink after the film is developed—the only time when a really legible record is possible.

Every carton bears an expiration date and should a film, prior to that date, be found defective it will be replaced without charge.

Rexo Record Films are made in all sizes, fitting every popular roll film camera on the market. Order by number.



No.	Size	Ex.	Cameras	Price
405	1 $\frac{5}{8}$ x 2 $\frac{1}{2}$	6	Adapted to No. 0 F. P. Kodak and No. 0 Graphic.	\$0.15
407	1 $\frac{5}{8}$ x 2 $\frac{1}{2}$	8	Adapted to V. P. Rexo, V. P. Kodak, No. 0 V. P. Anseo and No. 0 Brownie	.20
410	2 $\frac{1}{4}$ x 2 $\frac{1}{4}$	6	Adapted to No. 1 Brownie and No. 1 Buster Brown.15
415	2 $\frac{1}{4}$ x 3 $\frac{1}{4}$	6	For Nos. 0 and 1 Ingento (Regular and Special), No. 1 Rexo or Ingento, Jr., No. 2 Cub, No. 2 Rexoette; adapted to No. 2 Brownie, No. 2 F. P. Brownie, No. 1 Kodak, Jr., No. 2 Hawk-eye, No. 2 Buster Brown, Nos. 1 and 2 F. Buster Brown and Nos. 1, 2 and 3 V. P. Anseo.20
420	2 $\frac{1}{4}$ x 3 $\frac{1}{4}$	6	Adapted to No. 1 F. P. Kodak and No. 1 Panoram Kodak (3 ex.)20
425	2 $\frac{1}{2}$ x 4 $\frac{1}{4}$	6	For No. 1A Folding Rexo (Regular and Special), No. 1A Ingento (Regular and Special), No. 1A Rexo or Ingento, Jr., No. 2A Cub, No. 2A Rexoette; adapted to No. 1A F. P. Kodak (all models), No. 1A Kodak, Jr., No. 1A F. Hawk-eye, No. 2A Brownie, No. 2A F. P. Brownie, No. 2A Hawk-Eye, No. 2A Buster Brown, No. 2A F. Buster Brown, Anseo, Jr., and No. 1A F. Anseo.25
426	2 $\frac{1}{2}$ x 4 $\frac{1}{4}$	12	Adapted to same cameras as 425.50
430	3 $\frac{1}{4}$ x 4 $\frac{1}{4}$	6	For No. 3 Folding Rexo (Regular and Special), No. 3 Ingento (Regular and Special), No. 3 Rexo or Ingento, Jr., No. 3 Cub, No. 3 Rexoette; adapted to No. 3 F. P. Kodak (all models), No. 5 Weno Hawk-Eye, No. 3 Buck-Eye, No. 3 F. Hawk-Eye, Models 1, 2 and 3 Combination Hawk-Eye, No. 3 Focusing Hawk-Eye, No. 3 Buster Brown, No. 3 F. Buster Brown, Nos. 2, 3, 4 and 6 F. Anseo.35
431	3 $\frac{1}{4}$ x 4 $\frac{1}{4}$	12	Adapted to same cameras as No. 430.70
435	3 $\frac{1}{4}$ x 4 $\frac{1}{4}$	6	Adapted to No. 3 F. Brownie, No. 3 Brownie and No. 3 Bull's Eye Kodak	.35
436	2 $\frac{7}{8}$ x 4 $\frac{7}{8}$	6	Adapted to No. 2C Rexo Jr., 2C Rexoette, 2C Kodak Jr., and 2C F. Brownie..	.35
438	2 $\frac{7}{8}$ x 4 $\frac{7}{8}$	10	Adapted to same Cameras as No. 436.60
440	3 $\frac{1}{2}$ x 3 $\frac{1}{2}$	6	Adapted to No. 2 Bullet, No. 2 Bull's Eye, No. 2 Flexo Kodak, No. 2 F. P. Kodak, Tourist Buck-Eye, No. 2 Weno, Nos. 3 and 4 Stereo Hawk-Eye, No. 3B Al-Vista and No. 1 Anseo.30
445	3 $\frac{1}{4}$ x 5 $\frac{1}{2}$	6	For No. 3A Folding Rexo (Regular and Special), No. 3A Ingento (Regular and Special), No. 3A Rexo or Ingento, Jr., No. 3A Cub, No. 3A Rexoette; adapted to No. 3A F. P. Kodak (all models), No. 7 Weno Hawk-Eye, No. 3A F. Hawk-Eye, No. 3A F. Brownie, No. 3A Graflex, No. 3A Buster Brown, No. 3A F. Buster Brown and Nos. 3A, 9 and 10 F. Anseo.40
446	3 $\frac{1}{4}$ x 5 $\frac{1}{2}$	10	Adapted to same cameras as No. 445.70
450	3 $\frac{1}{4}$ x 5 $\frac{1}{2}$	6	Adapted to No. 2 Stereo Brownie, No. 3B Quick Focus Kodak, No. 3B F. Hawk-Eye, No. 6 Weno Hawk-Eye and No. 3 Anseo Box.40
460	4 x 5	6	Adapted to No. 4 Bullet, No. 4 Bull's Eye, No. 4 Panoram Kodak (2 ex.), No. 4 F. Buck-Eye, No. 4 Weno Hawk-Eye, No. 4 F. Hawk-Eye and Hawk-Eye Special, No. 4 Bullet Special (Model C).45
465	4 x 5	6	Adapted to No. 4 F. P. Kodak, No. 4 Screen Focus Kodak, and No. 4 F. Hawk-Eye (Models 3 and 4).45

REXO
CAMERAS



REXO
A DEVELOPING PAPER

REG. U. S. PAT. OFFICE

Three Grades Three Surfaces

Regular and Double Weight

Uniform in Speed and Quality

REXO is a new, rapid guaranteed developing paper of distinguished quality that meets the critical demands of the present day. It can be safely printed and developed without a dark room. It is extremely easy to produce excellent prints on Rexo, owing to its great latitude in exposure and development. It gives rich, brilliant pictures in which the lights and shadows harmoniously blend through the full range of tone gradations from white to black, but always retaining a transparent, atmospheric quality even in the deepest shadows.

Beautiful sepia tones are easily secured on Rexo by re-development without losing any of the refinement of detail and quality.

Rexo is perfectly adapted to all classes of negatives, whether weak, normal or contrasty, as a grade is especially made to insure good prints from each class.

REXO Hard.	For weak, thin negatives.
REXO Soft.	For hard, contrasty negatives.
REXO Normal.	For normal, average negatives.

The quality that has long been sought after in photo-prints is obtained in Rexo. It is made by masters in photography under the most modern and scientific conditions. There is no guess-work with Rexo, as it is always uniform in speed and quality, and is fully guaranteed to give entire satisfaction. A paper for high grade work. Prove the quality of Rexo by giving it a trial, and comparing it with other brands.

Enlarging Rexo

Rexo is also supplied in two extremely rapid emulsions known as Enlarging Rexo. This grade is 35 times as fast as Rexo Normal. Adapted to use with any kind of enlarging apparatus. It produces enlargements of superb tone and quality in either black and white or sepia. The prices are uniform with Regular Rexo. Circular on request.

Page Twenty-four

PHOTO SUPPLIES

REXO CAMERAS

Rexo Price List for All Grades and Classes

GRADES	{ Hard (Blue Seal). For flat, thin negatives.	{ Normal (Yellow Seal). For negatives of average or normal density.	{ Soft (Red Seal). For hard, contrasty negatives.
SURFACES	{ Matte No. 2. Matte Surface. No Lustre.	{ Semi-Matte No. 3. Smooth Velvet Surface.	{ Glossy No. 4. Glossy Surface.

Enlarging Rexo is supplied in two grades only, Normal (Green Seal) and Soft (Olive Seal), and in all the above surfaces, also in Double Weight Buff (No. 5), an India tint stock with a matte surface.

SIZE	REGULAR WEIGHT		DOUBLE WEIGHT	
	Per Dozen	Per Gross	Per Dozen	Per Gross
2 1/2 x 2 1/2	\$0.10	\$1.00
2 1/4 x 3 1/4	.12	1.20
2 1/2 x 4 1/4	.12	1.20
3 1/2 x 3 1/2	.12	1.20
3 1/4 x 4 1/4	.12	1.20
3 1/4 x 5 1/2	.15	1.50	\$0.25	\$2.00
4 x 5	.15	1.50	.25	2.00
3 7/8 x 5 1/2	.15	1.50	.25	2.00
4 x 6	.20	1.60	.25	2.00
4 1/4 x 6 1/2	.25	2.50	.30	3.00
4 3/4 x 6 1/2	.25	2.50	.30	3.00
5 x 7	.30	3.00	.35	3.50
5 x 8	.35	3.40	.40	4.00
3 1/2 x 12	.30	3.00	.35	3.50
5 1/2 x 7 3/4	.35	4.00	.45	4.50
6 x 8	.40	4.00	.50	5.00
6 1/2 x 8 1/2	.50	4.75	.60	6.00
7 x 9	.55	5.50	.65	7.00
7 1/2 x 9 1/2	.60	6.00	.75	8.00
8 x 10	.65	6.75	.80	9.00
9 x 11	.85	8.50	1.00	11.00
10 x 12	1.00	10.00	1.20	13.50
11 x 14	1.30	13.00	1.55	17.25
14 x 17	2.00	20.00	2.40	27.00
16 x 20	2.40	27.00	3.20	36.00
18 x 22	3.00	34.00	4.00	45.00
20 x 24	3.50	40.00	4.80	54.00

Special Sizes cut to order at proportionate prices.

REXO IN ROLLS

	Regular Weight		Double Weight	
	20" wide	40" wide	20" wide	40" wide
10 foot rolls.....	\$1.35	\$2.70	\$1.85	\$3.70
10 yard rolls.....	4.00	8.00	5.50	11.00

Rolls of any other width up to 40" wide and of 10 feet length and longer will be supplied at proportionate prices.

REXO POST CARDS

	Doz.	Gross	
Rexo Post Cards.....	\$0.15	\$1.50	

Rexo Telegauge



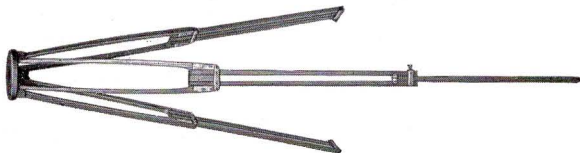
Patents Pending

This is an instrument for quickly and accurately measuring distances. Its operation is based on scientific optical laws and its readings are absolutely correct. It is constructed entirely of metal, handsomely finished, and contains two optical mirrors, one of which is placed at a fixed angle, and the other moves on an axis operated by a knurled screw, which contains the distance gauge and pointer.

The Rexo Telegauge, which weighs only 4 ounces, and measures only $1\frac{1}{2} \times 4\frac{1}{4}$ inches, can be conveniently carried in the vest pocket, and when used will pay for itself in one day's picture taking in the superior results which it insures. There are probably more failures among amateurs due to getting out-of-focus pictures than all other causes put together. The Rexo Telegauge solves this perplexing problem quickly and accurately. Supplied in handsome leatherette case with button clasp.

Cat. No. L-1201. Rexo Telegauge in case..... \$3.00

Ideal and Ingento Tripods



Ideal tripods are of the compact combination sliding and folding type. Each leg is composed of three sections, the lowest section slides into the second, while the upper section folds back upon it. The height is regulated by a clamp screw in the lower section.

The heads are rapidly detached and are fitted with a universal camera screw.

Ingento Tripods consist of two sections, formed by a center leg sliding between two outer pieces. The height is regulated by a clamping screw.

The legs are fixed permanently to the head, which is fitted with a universal camera screw.

Especially selected, seasoned hardwood is used in the construction of both Ideal and Ingento Tripods. For cameras 5x7 or smaller.

Catalogue No.	Name	No.	Length Folded Inches	Diameter of Head Inches	Price
A-750	Ideal	1-Jr.	21	3	\$2.25
A-751	Ideal	1-	21	3½	2.50
A-753	Ingento	3-	29	3	1.00

Page Twenty-six

Ideal Portrait Lenses



FOR home portraiture with the ordinary camera, these lenses are indispensable. By slipping the Ideal Lens over the camera lens, pictures can be made very close to the subject, thus securing large heads, having a roundness and softness so essential in artistic portraiture.

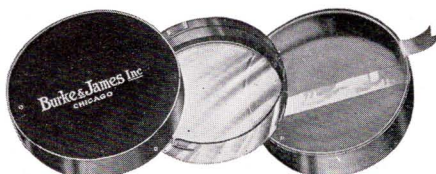
Ideal Portrait Lenses are made in two styles, Regular and Special. The Regular is composed of two dissimilar lenses accurately centered and cemented together and supplied in plush-lined case with cap. The Special consists of a single lens only, and is supplied in a cardboard box.

PRICES

Cat. No.	Diameter	Regular	Cat. No.	Diameter	Special
B-650	7/8-inch	\$1.00	B-665	7/8-inch	\$0.50
B-651	1 5/16-inch	1.50	B-666	1 5/16-inch	.50
B-654	1 7/16-inch	1.50	B-667	1 7/16-inch	.50
B-656	1 1/2-inch	1.50	B-668	1 1/2-inch	.50

Ingento Color Filters

These Filters give a true atmospheric effect and render correct color values in pictures of flowers, trees and colored objects. They are indispensable for securing beautiful cloud effects, and are guaranteed to be both spectroscopically and optically perfect.



Made in two styles: Style A, for general use, requiring three times normal exposure. Style B, for securing absolute color values, requiring eight times normal exposure.

They are mounted in nickel-plated brass cells and slip over the lens like a cap. Packed in plush-lined boxes.

PRICES

Cat. No.		Style A	Cat. No.	Style B
B-500	7/8-inch diameter	\$0.75	B-515	\$1.00
B-501	1 5/16-inch diameter	.75	B-516	1.25
B-503	1 7/16-inch diameter	1.00	B-518	1.50
B-504	1 1/2-inch diameter	1.00	B-519	1.50

We are sole agents for the Iris and Reform Graduated Filters. Descriptions and prices on request.



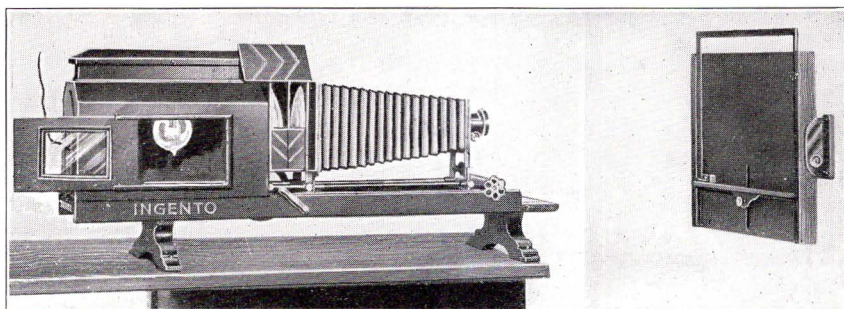
Ideal Duplicator

Slips over the lens like a cap and by its use the same person can be photographed twice, in different positions, on the same negative, without showing any division line. Many curious and humorous pictures can be obtained in this way.

PRICES

Cat. No.			Cat. No.	
B-670	7/8-inch diameter	\$0.25	B-672	1 7/16-inch diameter
B-671	1 5/16-inch diameter	.25	B-673	1 1/2-inch diameter

Ingento Enlarging Lanterns



THESE Lanterns are compact, self-contained, portable projecting instruments, complete with light burner, condensing lenses, negative holder, etc., and are adjustable for making enlargements of any desired size. They are unlimited in their universal adaptability for all kinds of projection work. In addition to enlarging they can also be used for making lantern slides by reduction and as stereopticons for exhibition of lantern slides.

These instruments are magnificently made and beautifully finished. They can be supplied with any kind of light—electric, mazda, incandescent, arc, nernst, acetylene, gas, etc., and can be used with any style or focus of objective lens. The lanterns listed accommodate 4x5, 3¼x5½ and smaller negatives, glass or film, and are supplied with 6½-inch condensing lenses.

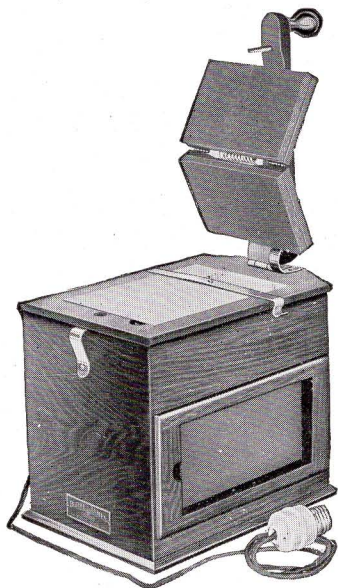
They have a capacity for quick and accurate work and are used by many of the leading photographers. Made in a variety of combinations not listed here. Full particulars of these Enlarging Lanterns are given in our booklet, "Profitable Enlarging," which will be sent to any one free on application. The lanterns are listed in every case without projecting lenses. For best results use Enlarging Rexo, see pages 24 and 25.

Cat. No.	Price
G-52	Style A—1 Enlarging Lantern Outfit, complete as illustrated, with No. 3 Rheostat, but without projecting lens.....\$64.00
G-92	Same as above, but with 500 Watt Mazda Lamp..... 55.00
G-62	Style C—1 Lantern Only, with 90° Arc Lamp and No. 3 Rheostat 50.00
G-56	Same as above, but with 500 Watt Mazda Lamp..... 43.00
G-72	Style D—1 Lantern Only, with 100 C. P. Nernst Lamp... 46.50
G-76	Style E—1 Lantern Only, with 50 C. P. Incandescent Electric Lamp 40.00
G-80	Style F—1 Lantern Only, with Welsbach Gas Burner.... 40.00
G-84	Style G—1 Lantern Only, with Acetylene Burner..... 40.00
G-129	Acetylene Generator and Tubing (when bought with Lantern) 4.00
G-100	Ingento Focusing Platform, Style A..... 9.00
G-104	Ingento Enlarging Easel, Style B..... 5.00
B-950	Ajax Projecting Lens, No. 1, 9-inch Focus..... 9.00
G-178	Kit for Adapting Lantern to 3¼x5½ Negatives 1.50
G-182	Ingento Lantern Slide Adapter, No. 1..... 1.50

Rexo Rapid Printer, Style F

**For Negatives 5x7 or Smaller
(Glass or Film)**

THE Rexo Rapid Printer is the ideal machine for the amateur. It is well constructed of thoroughly seasoned Pennsylvania white wood, the side walls are dove-tailed insuring maximum strength and durability. The interior is coated with a white fire-proof, non-staining paint, which offers the most perfect light reflecting surface. The exterior of the box is mission finish with nickel-plated metal parts. It is supplied with an automatic alternating pilot and printing light knife switch. The pilot ruby bulb is included and the socket for the printing light is standard (bulb not supplied). Standard plug and 45 inches of wiring is included. We recommend for printing a 25 or 40 watt Mazda.



The removable ground glass diffusion screen insures even distribution of the printing light and at the same time provides means for masking, vignetting, retouching, etc. Another feature of importance is the spring actuated half-opening pressure board with its heavy felt padding, insuring perfect contact between the paper and the negative. The releasing spring is sure and simple. There is nothing about the machine to get out of order. There is also a retaining strap for holding the negative and mask (if used) in position on the printing plate. The removable orange-covered side window provides a safe light for handling paper during printing. Speed:—Using a 40 watt Mazda lamp and Normal Rexo paper, three seconds was found to be the correct exposure for medium thin negatives, five seconds for negatives of average density, and ten seconds for dense negatives.

Marginal Printing Masks

A set of six thin metal masks are offered those who desire to make prints having a white margin all round. The openings are adapted for the use of the following sizes of paper:—4x5, $3\frac{1}{4} \times 5\frac{1}{2}$, $3\frac{1}{4} \times 4\frac{1}{4}$, $2\frac{1}{2} \times 4\frac{1}{4}$, $2\frac{1}{4} \times 3\frac{1}{4}$ and $1\frac{5}{8} \times 2\frac{1}{2}$ (V. P.).

PRICES

Cat. No. K805—Rexo Rapid Printer, Style F.....\$5.00
Cat. No. K806—Marginal Printing Masks, Set of Six......75

Page Twenty-Nine

Ingento Developing and Printing Outfits

For Use in Connection With Developing Paper

For 3¼x5½, 4x5 Smaller Sizes



CAT. No. L-1040 INGENTO DEVELOPING OUTFIT No. 1, PRICE COMPLETE, \$1.35.

- | | | | |
|-----------------------------------|--------|------------------------------|--------|
| 3 Japanned Trays at 10 cents..... | \$0.30 | 1 Copy A B C of Photography, | |
| 1 Ruby Candle Lamp..... | .25 | a complete Manual of In- | |
| 1 Printing Frame and Glass.... | .25 | structions | \$0.25 |
| 2 Tubes M. Q. Developer..... | .10 | ½ lb. Rexo Acid Hypo..... | .15 |
| 1 Doz. Rexo Developing Paper.. | .15 | 1 4-oz. Measuring Glass..... | .15 |

CAT. No. L-1041 INGENTO DEVELOPING OUTFIT No. 2, PRICE COMPLETE, \$1.90.

- | | | | |
|--------------------------------|--------|------------------------------|-----|
| 3 Insulate Trays at 18c..... | \$0.54 | 1 Copy A B C of Photography, | |
| 1 Ruby Candle Lamp..... | .25 | a Complete Manual of In- | |
| 1 Printing Frame and Glass.... | .25 | structions | .25 |
| 1 Box Developing Tubes..... | .25 | ½ lb. Rexo Acid Hypo..... | .15 |
| 1 Doz. Rexo Developing Paper.. | .15 | 1 4-oz. Measuring Glass..... | .15 |

CAT. No. L-1042 INGENTO DEVELOPING OUTFIT No. 3, PRICE COMPLETE, \$2.50.

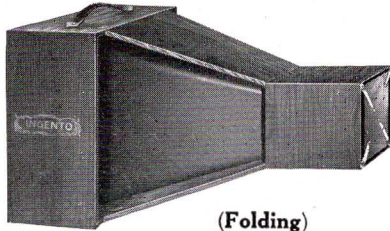
- | | | | |
|--------------------------------|--------|------------------------------|--------|
| 3 Insulate Trays at 18c..... | \$0.54 | 1 Negative Drying Rack..... | \$0.15 |
| 1 4-oz. Graduate | .30 | 1 4-oz. Jar Paste..... | .15 |
| 1 Ruby Candle Lamp..... | .25 | 1 Paste Brush..... | .10 |
| 1 Printing Frame and Glass.... | .25 | 1 Doz. Card Mounts..... | .10 |
| 1 Box Developing Tubes..... | .25 | ½ lb. Rexo Acid Hypo..... | .15 |
| 1 Doz. Rexo Developing Paper.. | .15 | 1 Copy A B C of Photography, | |
| 1 Print Roller | .25 | a Complete Manual of In- | |
| | | structions | .25 |

In ordering always specify both size and number of Outfit desired, otherwise the 4x5 size will be sent. Outfit No. 1 supplied in 4x5 size only.

Page Thirty

Ingento Daylight Enlarger

Enlarging with this camera is just as easy as making contact prints. It is fitted with a fixed focus lens, and supplied with hinged back, showing size of paper necessary for the various size negatives. It accommodates negatives $3\frac{1}{4} \times 5\frac{1}{2}$, 4×5 or smaller and makes enlargements four times the size of the negative. For either bromide or developing paper.



(Folding)

Cat. No. G-44 Ingento Daylight Enlarger.....\$7.50

Ingento Trimming Boards



The blades of this Trimmer are made of the finest carbon steel, properly tempered. The handle blade is hollow ground, which makes it self-sharpening, an exclusive feature of the greatest practical advantage.

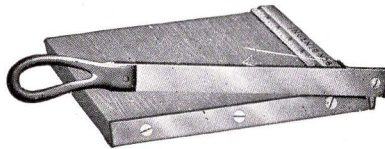
The beds are maple, finely polished, and are sub-divided into perfect half-inch embossed squares, enabling exact trimming at any point.

Cat. No.	Price	Cat. No.	Price
L-1001 $6\frac{1}{2}$ -in. Blade.....	\$1.50	L-1003 $10\frac{1}{2}$ -in. Blade.....	\$3.25
L-1002 $8\frac{1}{2}$ -in. Blade.....	2.00	L-1004 $12\frac{1}{2}$ -in. Blade.....	3.75

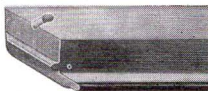
Ingento Amateur Trimming Boards

The bed is of seasoned warp-proof hardwood. The blades are of tempered steel skillfully ground

Cat. No.	Price
L-1006 For 4×5 prints -	\$0.40
L-1007 For 5×7 prints -	.60
L-1008 For 8×10 prints -	1.25



Ingento Lock-Joint Moulding



Anyone can artistically frame his own pictures in a few moments with Ingento Lock-Joint

Moulding. Just join the mitred corners and insert the steel clips and the frame is ready. Supplied in a number of designs in various lengths from $3\frac{1}{4}$ to 30 inches. Styles here listed are Nos. 211, Flemish Oak, and 311, Ebony, $\frac{3}{4}$ -inch wide. Send for circular showing all styles and sizes.

Size In.	Cat. No. Design 211	Cat. No. Design 311	Price Per Pr.	Size In.	Cat. No. Design 211	Cat. No. Design 311	Price Per Pr.
$3\frac{1}{4}$	F-650	F-850	\$0.14	8	F-662	F-862	\$0.18
5	F-656	F-856	.15	$8\frac{1}{2}$	F-663	F-863	.18
$5\frac{1}{2}$	F-658	F-858	.16	10	F-665	F-865	.19
$6\frac{1}{2}$	F-660	F-860	.17	11	F-666	F-866	.20
7	F-661	F-861	.17	14	F-668	F-868	.22

Ingento Ruby Lamp

(Electric—No. K-700)

Supplied with a ruby, orange and ground glass, readily interchangeable for any class of work. With bulb, cord and plug. Copper oxidized and beautifully finished.

Cat. No.

K-700 Price, complete\$2.50

K-701 Extra Glass, each (specify kind). .10



Ingento Ruby Lamp

(Electric—No. K-703 and 704)

To be attached to any incandescent socket. A threaded brass ring slips over the socket to which is attached the support for the outer globe, forming a perfect light-tight connection. Supplied in two styles: The No. K-703 is for plates and films; the No. K-704 is for bromide and developing papers.

Cat. No.

K-703 Ruby Globe with Orange Bulb.....\$1.50

K-704 Orange Globe with Ruby Bulb..... 1.50



Ingento Ruby Lamp

(Oil-Gas-Electric)

This series of lamps have several exclusive features. The oil lamps have flickerless flame burners. The gas lamps attach with the ordinary gas tubing. The electric lamps are supplied with cord and plug for any socket.

Handsomely finished in red baked enamel and supplied with both orange and ruby glasses. Two sizes, 3½x4½ and 4½x5½ inch glasses.

Cat. No. Light Price

K-710 Oil\$0.75

K-713 Oil 1.00

K-711 Gas75

K-714 Gas 1.00

K-712 Electric .. 1.50

K-715 Electric .. 2.00



Ingento Ruby Lamp (Oil)

Ingento Ruby Lamp

(Candle)

A folding candle lamp with detachable top and bottom, making it the most compact lamp for traveling. The folding sides are covered with non-actinic ruby fabric. Six inches high.

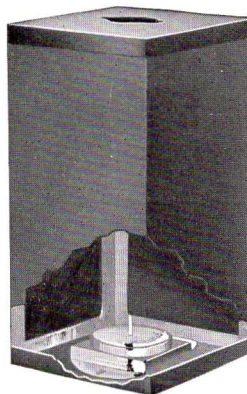
Cat. No. K-716 Each\$0.25

Cat. No. K-720 Candles for same, per doz. .22

The No. K-717 is a neat, compact candle lamp, constructed entirely of metal, enamel finish.

Cat. No. K-717 Each\$0.25

Cat. No. K-720 Candles for same, per doz. .22



**Ingento Ruby Lamp
No. K-716**

Ingento Print Washer

(Patented)

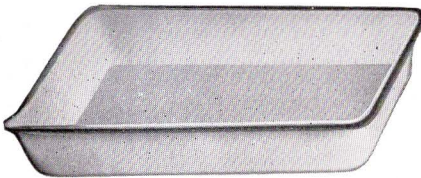
A vacuum is created which compels a perfect circulation and keeps the prints revolving, insuring quick and thorough washing.

Cat. No.	Diameter	For Prints	Price
K-143	9 inches	4x5	\$1.25
K-144	12 inches	5x7	1.75



Ingento Steel Enamel Trays

Stamped out of one piece of heavy steel, quadruple white enamel. Light, strong and durable.

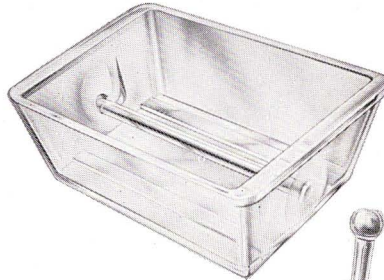


Cat. No.	Size	Price
K-462	3 1/4 x 5 1/2	\$0.50
K-463	4x5	.50
K-464	5x7	.80
K-465	6 1/2 x 8 1/2	1.00
K-466	8x10	1.25
K-468	11x14	2.25

Nussbaum Film Developing Tray

For developing roll films in the strip. The rod is removable and revolves freely in the grooves. For all sizes of roll film. Made of glass. Extra deep.

Cat. No. K-306 Price, each \$0.50



Ingento Mortar Graduate and Pestle

Graduate and mortar combined, for rapid crushing and dissolving of chemicals and tablets. Capacity 4 oz. Heavy glass.

Cat. No. K-368 Price, complete with Pestle - - - \$0.50



Ingento Scale

This is an accurate and perfectly constructed scale, sensitive to 1/2 grain. The interchangeable pans measure 3 1/2 inches in diameter.

Supplied with fourteen brass and aluminum weights

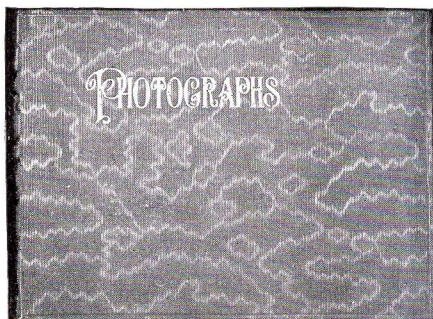
from 1/2 grain to 2 ounces. Beautifully polished and nickel plated. Guaranteed accurate.

Cat. No. L-665. Price, complete - - - - - \$3.00

Page Thirty-three

Royal Albums

ROYAL Albums comprise a complete line of high grade, permanently bound and interchangeable loose-leaf albums with flexible carbon leaves. They are supreme in quality, workmanship and finish. The catalog number indicates the number of leaves contained in the album. Space permits us to show only a few of the more popular styles:

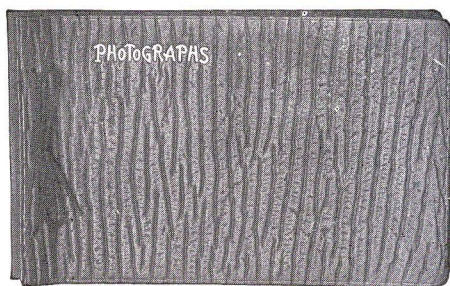
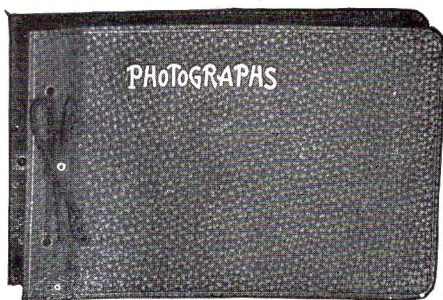


Cloth Bound Series—Permanently Bound

Size	Black Moire Cat. No.	Price
5½x 7	F3300/50	\$0.50
7 x10	F3301/50	.75
10 x12	F3302/50	1.25
11 x14	F3303/50	1.75
7 x11	F3304/50	.90
5½x 8¼	F3305/50	.65

Imitation Leather Series —Interchangeable

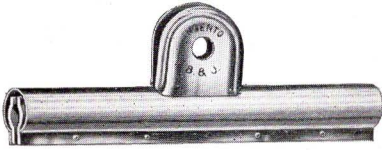
Size	"Seal" Cat. No.	Price
5½x 7	F04100/50	\$1.15
7 x10	F04101/50	1.50
10 x12	F04102/50	2.25
11 x14	F04103/50	2.75
5½x 8¼	F04105/50	1.35
10 x 8	F04108/50	1.85
9 x14	F04109/50	2.50



Genuine Leather Series —Interchangeable

Size	Lge. Walrus Cat. No.	Price
5½x 7	09300/50	\$2.00
7 x10	09301/50	2.25
10 x12	09302/50	3.50
11 x14	09303/50	4.25
5½x 8¼	09305/50	2.15
10 x 8	09308/50	2.75

Ingento Film Clips



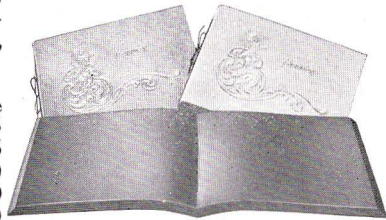
The Ingento Film Clips are made of strong spring brass, heavily nickel-plated. They are indispensable for handling films in developing, fixing, washing and drying, as they obviate the necessity of touching the film with the fingers. They are unaffected by photographic chemicals.

Cat. No. K-787 Per pair, 4 inches long - - - - \$0.30

Ingento Albumettes

Bound with very high grade flexible cover stock, artistically embossed. The back is fastened together with a silken cord. Supplied in three popular colors—brown, gray and black, and contain sixteen leaves to match. Specify color when ordering.

Cat. No.		Price
F-1786	5½x7 Ingento Albumette	\$0.15
F-1787	5x8 Ingento Albumette	.15
F-1788	7x9 Ingento Albumette	.20
F-1789	7x10 Ingento Albumette	.20
F-1790	9x8 Ingento Albumette	.20

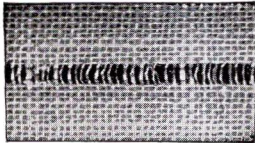


Ingento Hinge Tape

A quick, effective medium of mounting pictures or postal cards, without paste.

The prints are hinged from the top and can be turned completely over, so that reference to the pictures can be written underneath. Not possible by any other system. Width 9/16 in.

Also admirable for binding music, postal folders, picture ladders, etc.
Cat. No. F-3575 5-yard roll \$0.10 F-3576 15 yard roll.....\$0.25



Art Corners

A remarkably artistic way of mounting any size picture on cards or in albums without the use of paste. The gummed corners are attached to the print, moistened and then placed on the mount or album leaf.

Supplied in four styles—round, square, fancy and oval, and in the following colors: black, white, sepia, light and dark gray. 100 Art Corners to a package; gold and silver, 50 Art Corners to a package. Always state color desired.

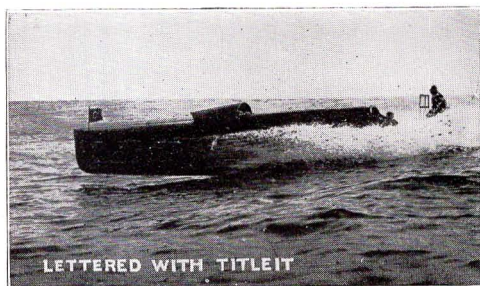
Cat. No.		Price
F-3321	Round - - - -	\$0.10
F-3322	Square - - - -	.10
F-3323	Fancy - - - -	.10
F-3324	Oval - - - -	.10



Page Thirty-five

Titleit

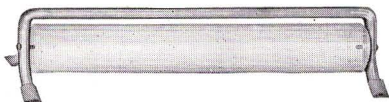
Titleit offers a quick and effective method for titling negatives. It consists of a font of thin, opaque letters which are attached to the film side of the negative with the adhesive supplied with the outfit. Unequaled for producing clear, legible titles. Easily removed by soaking the negative in water.



Cat. No. L-1180	Outfit No. 1—1300 letters and figures, small size	\$0.50
Cat. No. L-1181	Outfit No. 2—1300 figures only, small size.....	.50
Cat. No. L-1182	Outfit No. 3— 800 letters and figures, large size	.50
Cat. No. L-1183	Outfit No. 4— 800 figures only, large size.....	.50

Ingento Developing Roller

For Tray Development of Films



This is a one-inch solid glass roller revolving in a metal frame. For tray development the film is passed under the roller which is of sufficient weight to resist the upward pull as the film is drawn

through the developer. Only one-half of the solution ordinarily used is necessary.

Cat. No. K-793 Price, Each for films 4¼x6½ or smaller - \$0.75

"Wait-A-Minute"

Automatic Shutter Tripper

"Webster's"

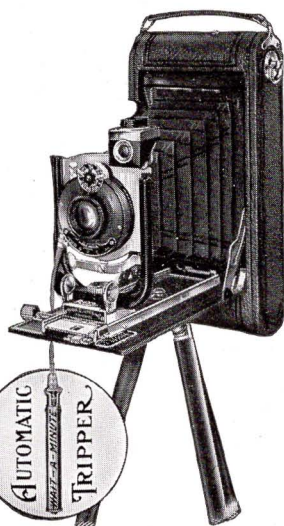
This is an ingenious device which engages the cable release and operates the shutter automatically thereby permitting the operator to take his own picture or include himself in the group. It supplies the means of providing a photographic record of yourself with friends while on hunting, fishing or vacation trip, week end or picnic party.

It is easily regulated to operate in from a few seconds to several minutes. Quickly adjusted to suit the convenience of the user. Fits any cable or antinous release and can be attached or detached in a moment.

Your camera is incomplete without it. No larger than a pen knife and weighs less than an ounce. It adds 100% to the joys of amateur photography. Bulbs replaced by Cable Release at slight cost.

Cat. No. B-2151. Price each.....\$1.00

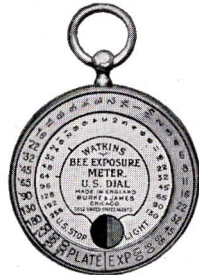
Page Thirty-six



Watkins' Bee Meter

This Meter gives correct exposures every time, under all conditions, thus insuring the very best results. Extremely simple to use. Can be carried in the vest pocket like a watch. It is the invention of the great photographic scientist, Alfred Watkins. The most reliable exposure meter made. U. S. Dial supplied unless F Dial is especially ordered.

Cat. No. L-56 Bee Meter, complete.....\$1.25



Six-Fax Exposure Disc

(Reg. U. S. Pat. Office)

This is the most accurate and simplest exposure calculator made, and is based upon the six essentials which determine correct exposure.

- 1st. The speed of the film or plate.
- 2nd. The subject to be photographed.
- 3rd. The light.
- 4th. The speed of the lens.
- 5th. The time of the day.
- 6th. The time of the year.

The correct exposure can be read at a glance.

Cat. No. L-53 Price, each.....\$0.25



Caywood Automatic Flash Lamp

The simplest and safest flash lamp made. Always ready and flashes every time the trigger is pulled by the use of the wonderful Sparking Metal. No caps, matches, or fuses are required. Small, compact and reliable and can be carried in the pocket.

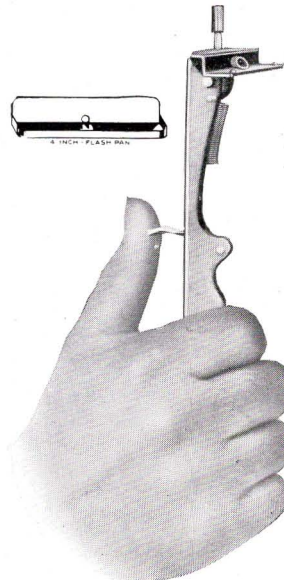
Cat. No.		Price
L-202	Regular Hand Lamp	\$1.00
L-203	Extension Folding Hand Lamp.	1.25
L-204	Pan-Cartridge Lamp.....	2.50
L-211	Sparking Metal, each10

Caywood Cartridges

L-205	No. 0 Portrait Special, one empty shell and six capsules of powder.....	\$0.25
L-206	No. 1 Two-inch Cartridges, per box of six40
L-207	No. 2 Three-inch Cartridges, per box of six60
L-210	No. D Trial Assortment.....	.40

Aucello Flash Powder

L-350	One ounce bottle.....	\$0.45
L-351	Four ounce bottle.....	1.50



NOTE—Flash Powder and Cartridges cannot be sent by mail.

Page Thirty seven

Developers

All of our Developing Formulae are tested by Alfred Watkins, the world's greatest photographic scientist. This insures their absolute accuracy, and guarantees the best possible results.

Ingento Developing Tablets

The most convenient and economical form of developer. There is no waste, no measuring, no trouble, no doubt.

They are absolutely accurate and uniform. Ideal for home and traveling. Three popular varieties. Each package contains 24 pairs of tablets, sufficient to make 54 to 72 oz. of normal developer.



Cat. No.		Price
H-145	M. Q., for papers, films and plates, per carton - -	\$0.25
H-141	Edinol Quinol, for papers, films and plates, per carton -	.25
H-148	Pyro-Metol, for films and plates, per carton - -	.25

Ideal Developing Powders

H-126	Ideal Hydro-Metol, for papers, films and plates, per box	\$0.25
H-122	Ideal Edinol Quinol, for papers, plates and films, per box	.25
H-121	Ingento Auto Tank, for tank development, per box -	.25

Rexo M. Q. Developer

(In Glass Tubes)

Composed of the purest chemicals and combined in the precise proportions requisite for absolute nicety in development. Especially prepared for use with Rexo and all other developing papers, films and plates.

Cat. No.	H-140	Box of 6 tubes, price -	\$0.25
----------	-------	-------------------------	--------



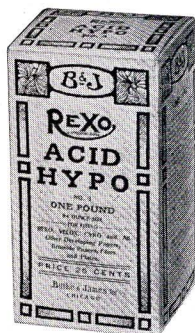
Ingento Developers

(In Glass Tubes and Cartridges)

These developers are composed of chemically pure ingredients in exact proportions as to make them thoroughly reliable for universal use. They will produce excellent results on all brands of papers, films and plates.

Cat. No.		Price
H-137	Box of 6 Tubes of M. Q. - - - - -	\$0.25
H-135	Box of 6 Tubes of Edinol Quinol - - - - -	.25
H-103	Box of 6 M. Q. Cartridges - - - - -	.25
H-104	Box of 6 Non-Abrasion Cartridges - - - - -	.25





Rexo Acid Hypo

A DOUBLE powder acid fixing preparation in which the acidifier is packed separately from the hypo. Especially adapted to fixing Rexo and all other developing papers. Also admirable for plates and films. Packed in damp-proof cartons.

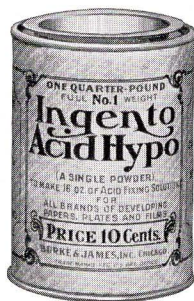
Cat. No. H-36 Half pound carton - - - \$0.15
Cat. No. H-37 Pound carton - - - .25

Ingento Acid Hypo

Ingento Acid Hypo is a quick-acting, clean and handy acid fixing compound in crystalline form, in which the hyposulphite of soda and acidifier are scientifically combined to form a permanent single powder. It is adapted to use with developing papers, plates and films.

Put up in damp-tight, self-sealing container, with a measuring cup, holding sufficient compound to make 8 ounces of fixing bath.

Cat. No.	Price
H-50 4 oz. Size	\$0.10
H-51 8 oz. Size15
H-52 16 oz. Size25



Intensine

(Reg. U. S. Pat. Office.)

A powerful, quick-acting intensifier in crystalline or tablet form that dissolves instantly in water to make a single solution.

When applied to thin, flat printing negatives, it makes them strong and brilliant printers.

Cat. No.	Price
H-88 Tube (powder) each	\$0.15
H-90 Package containing 24 tablets .	.25



Sepaline Tablets

(Reg. U. S. Pat. Office.)

For producing brilliant, sepia tones on Rexo, Velox and other developing and bromide papers.

Black and white prints, old or new, can be transformed into beautiful sepia pictures in from two to three minutes.

Each package contains sufficient Sepaline to tone 250 to 500 prints, according to size.

Cat. No.	Price
H-316 Package of 24 pairs of Tablets	\$0.25
H-197 In Cartridge form, 6 Cartridges in a box25



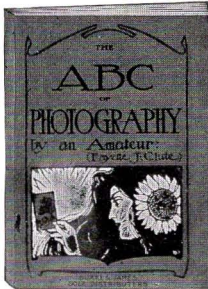
REXO CAMERAS

Photographic Books

ABC of Photography

It is written in simple language, plain and practical, covering all branches of amateur photography from A to Z. 85 pages. Paper cover.

Cat. No. F-3150 Price\$0.25



Watkins' Manual

This book teaches scientific exposure and development by easily understood instructions and examples. It also deals with all branches of photography. 136 pages. Flexible cloth cover.

Cat. No. F-3195. Price\$0.50

Ingento Photographic Sundries

Cat. No.		Price
L-520	Print Rollers, 4 inch	\$0.20
H-200	Water Colors, box of ten colors, with brush	.25
H-152	Acme Amateur Water Colors, per set	1.00
L-1114	Retouching Outfit, complete	.70
H-214	Spotting Colors, set of four colors	.25
F-3389	Blotter Book, 12 sheets, 7 3/4 x 9 1/4 (with waxed inserts)	.25
H-220	Opaque, Collapsible Tubes	.15
K-314	8-oz. Glass Tumbler Graduate, each	.15
K-362	Tablet Crusher and Stirring Rod (glass)	.10
K-754	Ideal Thermometer, each	.25
K-758	Stirring Rod Thermometer, each	.75

M. & M. Photo Mats

These mats are easy to register and add fully 100 per cent to the beauty of the print. Full directions with each package.

Special Postal Mats

- Cat. No. F-3313 Ass't. "A" contains 12 plain designs in ovals and rectangle.
 Cat. No. F-3314 Ass't. "B" contains 12 fancy designs in oval and rectangle.
 Cat. No. F-3315 Ass't. "C" contains 8 pictorial designs, hearts, shields, etc.
 Cat. No. F-3316 Ass't. "D" contains 12 panel designs for negatives 2 1/2 x 4 1/4.
 Cat. No. F-3317 Ass't. "E" contains 8 pictorial designs for negatives 2 1/2 x 4 1/4.

Price, each Assortment, \$0.25.



Printing Frames

Size	Cat. No.	Amateur Piano Hinge	Cat. No.	Ingento Extra Heavy	Plain Glass
3 1/4 x 4 1/4	K-627	\$0.25	K-600	\$0.50	\$0.05
3 1/4 x 5 1/2	K-628	.2505
3 5/8 x 6	K-629	.2505
4 x 5	K-630	.25	K-601	.50	.05
5 x 7	K-632	.35	K-603	.75	.08

Rexo Photo-Products

“Every Click a Picture”

Rexo Cameras, Rexo Speed Film, and Rexo Developing Paper are the three links in the chain of perfect pictures, and each plays an important part. Our injunction “Load your Rexo Camera with Rexo Film and use or specify Rexo Paper for your prints” simply means the highest percentage of good pictures.

The leading photo-supply dealers everywhere carry the Rexo Line. If you cannot secure our products from your dealer, send us his name.

In choosing a camera be sure to examine the Rexo Line—if you have ever owned a camera you will instantly appreciate the superior merits of a Rexo, if you have never owned a camera you will choose a Rexo because of its many picture-insuring features.

No matter how much or how little you wish to invest in a camera, there is a Rexo to meet your requirements,—from \$2.00 for a compact little Rexoette to \$76.00 for the highest grade Rexo Special, with scores of models between these extremes, you are sure to find the Rexo you most desire.

Burke & James Inc

Manufacturers

Rexo Cameras, Film, Paper and Photo Supplies

CHICAGO :: NEW YORK

REXO

"Every Click a Picture"

