



GRAFLEX

GRAFLEX

and Graphic
Cameras



EASTMAN KODAK COMPANY

Folmer & Schwing Department

ROCHESTER, NEW YORK

1924



From a Graflex negative made at 1/1000, just as the fluttering Flycatcher reached the family tree.



The Graflex

FEATURES that fit the Graflex for supremacy in action photography make it an admirable camera for the amateur's everyday use. The Graflex way is free from guesswork; an immediate advantage to the beginner and one on which the veteran has learned to rely.

Whatever the subject selected, the three essentials of a good picture are sharp focus, nice arrangement and proper exposure. All are easy for the Graflex—a fact that is as important when the lens is stopped down with the shutter at $1/10$ as it is for a $1/1000$ snapshot at $f.4.5$. Yet the ability to make a keen, fully-timed negative of racing motorcycle or hurdling horse is always in reserve, eager for the tough task.

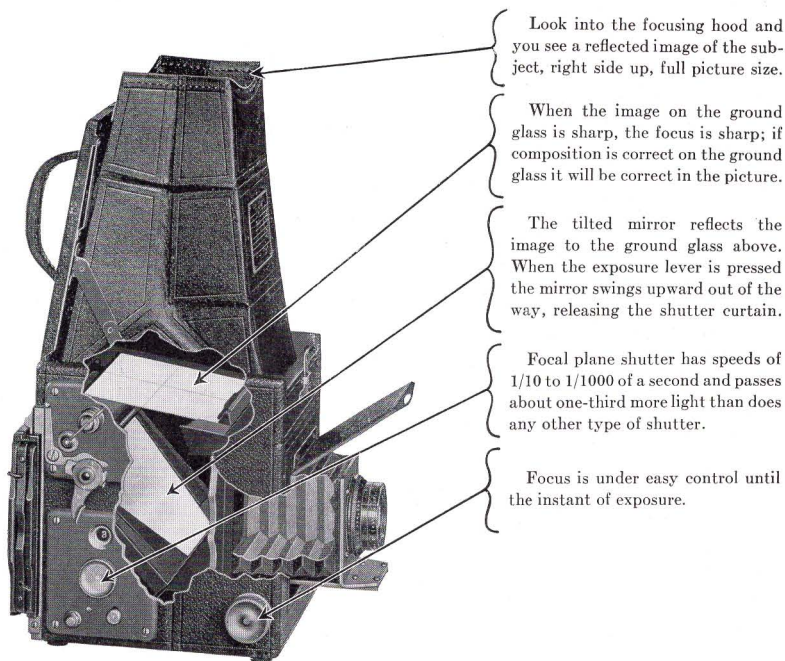
The Graflex user approaches each picture opportunity with confidence. For his camera does all, except wide angle work, that any hand camera can do—and does it with ease and certainty.

*You know when the focus is sharp,
you see what the view includes*

The reflecting mirror takes the guesswork out of composition and focusing by showing on the ground glass at the base of the viewing hood a right-side-up, picture-size image of the subject, visible until the instant of exposure. Arrangement, lighting and spacing are all seen in advance; action is faithfully followed. Composition becomes a matter of easy control.

Precise focus is also certain. As the lens is racked back and forth, the image reflected on the ground glass tells when the focus is right. Thus the reflecting mirror feature protects the amateur from two of his favorite faults. He *knows* when the focus is sharp, he *sees* what the view includes.

The Graflex Focal Plane shutter is a long curtain in which are several reinforced rectangular openings of different sizes. During

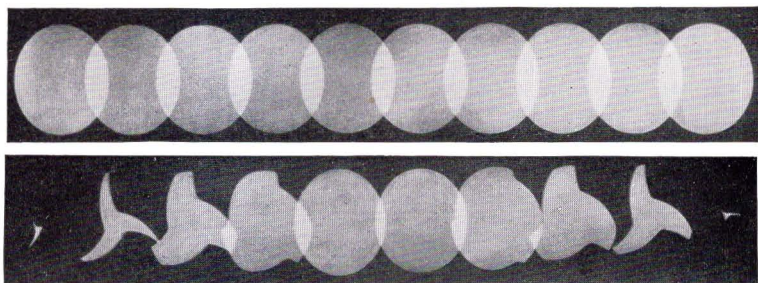


an exposure one of these openings passes close across the film, at constant velocity, giving uniform illumination throughout. Attached to the camera is a metal plate on which are engraved the exposures obtained by each curtain opening when combined with each curtain tension. The mechanism is simple and positive.

Speeds For All Occasions

Twenty-four instantaneous speeds, 1/10 to 1/1000 of a second, a slow snapshot of about 1/5 and *time* are provided: a range that covers every requirement.

At 1/350 or 1/295, Graflex pictures of lively youngsters, athletes or active animals have an air of animation that can be caught only at high speed. With the shutter set at 1/5 or 1/10, snapshots can be made indoors under good light.



From actual photographs made with identical lenses during exposures of $1/100$ of a second, each flash representing $1/1000$ of a second. The upper strip, made with a Graflex Focal Plane shutter, shows uniform illumination, whereas the lower strip indicates that the best between-lens shutter is "wide open" during the fifth and sixth flashes only.

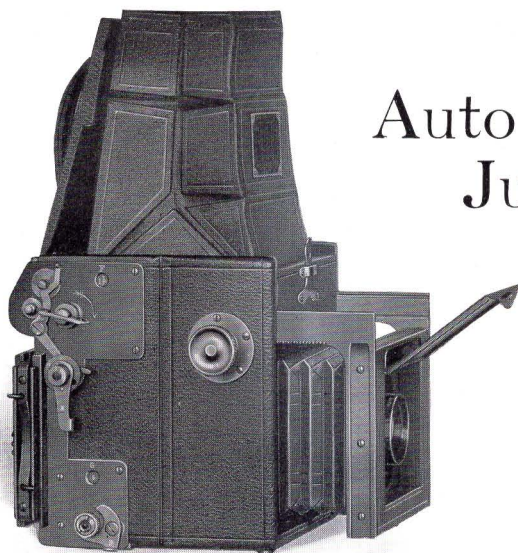
As shown in the laboratory photographs above, the Graflex focal plane shutter works at full efficiency throughout the exposure and passes about a third more light than does one of the "between-lens" type. This means that the Graflex can be operated at greater shutter speed without danger of under-exposure and that when using Kodak Cut Film *Super Speed* a slow snapshot will often do where another camera would require *time*.

The big, fast Kodak Anastigmat $f.4.5$ permits the focal plane shutter's efficiency to be fully realized—this in addition to the lens's inherent optical merit. For sharp definition, all over the negative, the Kodak Anastigmat $f.4.5$ takes first rank.

Though richly handsome, the Graflex is designed to withstand rough use. Beneath its cover of luxurious Morocco leather is a body of choice mahogany, sturdily joined. Exposed wood parts are ebonized; exposed metal parts are of silver-plated brass, oxidized to a dull, matte tone. Each Graflex is built of the best and by the best, throughout.

The Graflex combines the reflecting mirror, focal plane shutter and fast lens in a camera that satisfies the most exacting professional worker. Yet it is so easy to operate, and to understand, that the amateur appreciates its advantages as soon as he gets a Graflex in his hands and sees in the hood a big, right-side-up, image of his subject—a thrill that no other type of camera can offer.

Auto Graflex Junior



EXACTLY like a larger Graflex, this little camera boasts the reflecting mirror, focal plane shutter and $f.4.5$ lens. Yet it weighs only forty-four ounces and when closed to carry it is but five inches high.

The Junior is a quick action camera. Hood opens and lens uncovers at the release of a catch near the handle and a touch of the focusing knob. Image is centered, focus set and film exposed within a few seconds after the subject is sighted. And another exposure can be made in a jiffy.

By watching the right-side-up, negative-size image in the hood, the subject may be studied from different viewpoints—focus always under control—and the shutter released when the scene satisfies. Guesswork has no place in the procedure. The camerist *knows* when the focus is sharp, he *sees* what the view includes.

Auto Graflex Junior makes a $2\frac{1}{4} \times 3\frac{1}{4}$ picture, an economical size, large enough for the album. Bigger prints are easily obtained from the sharp, snappy negatives made by the Kodak Anastigmat

f.4.5. Its focal length of $4\frac{3}{8}$ inches permits good depth, even with the diaphragm fully open.

Twenty-four instantaneous speeds, from 1/10 to 1/1000, a slow snapshot of about 1/5 and *time* match every picture possibility. Cut film, plates, roll film and film packs can be used interchangeably in the proper attachments.

Auto Graflex Junior is a great favorite for its proved picture-making ability as well as for its small size. And its present price is the lowest at which a Graflex camera with *f*.4.5 lens has ever been offered.



The Auto Graflex Junior closed. This illustration shows the shutter release lever, conveniently located for the left thumb, as on other Graflex cameras.

DETAILS

Dimensions, 5 x $4\frac{3}{8}$ x 5 in.; bellows capacity, $5\frac{1}{2}$ in.; weight, with lens, $2\frac{3}{4}$ lbs; focal length of lens, $4\frac{3}{8}$ inches.

PRICES

	$2\frac{1}{4}$ x $3\frac{1}{4}$
AUTO GRAFLEX JUNIOR with one cut film holder or one plate holder and Kodak Anastigmat Lens <i>f</i> .4.5, No. 30	\$62.50
Graflex Roll Holder, No. 50	11.00
Graflex Cut Film Holder	1.75
Graflex Cut Film Magazine	12.00
Graflex Plate Magazine	12.00
Graflex Film Pack Adapter	4.50
Graflex Plate Holder	1.75
Ground Glass focusing panel, to interchange with holder	3.25
Leather Case for camera and roll holder or cut film magazine	6.75
Leather Case for camera and plate magazine	7.25
Kodak Cut Film, doz.46
Kodak Cut Film <i>Super Speed</i> , doz.52
Kodak Film Pack, No. 52050
Eastman Graflex Roll Film, No. 50, 6 exposures25

The prices of camera and film include the Excise Tar.

62.50
47.50
-14.00



Graflex, *Series B*

IN addition to the reflecting mirror, focal plane shutter, fast lens and quick action feature already described, the *Series B* models offer another advantage.

The Kodak Anastigmat *f.4.5* has for its setting a permanent, metal mount instead of a removable board. This improvement permits a smaller bellows section and lens standard, traveling on a single, wide, metal track. Focusing is smooth and easy.

Each size of Graflex, *Series B*, is a unit whose lens is an integral part of its design. The specific Kodak Anastigmat *f.4.5* selected has exactly the right focal length for the negative area to be covered—a forethought that allows generous images while retaining ample depth.

Focus and composition are determined by watching the reflected image on the ground glass at the base of the hood. Since the image

is visible until the instant of record, there's no chance for the subject to move out of focus before the exposure is made.

Speeds are 1/10 to 1/1000, a slow snapshot of 1/5, useful under dull light or indoors, and *time*.

One cut film holder is supplied so that Kodak Cut Film and Kodak Cut Film *Super Speed* can be used in regular equipment. A plate holder is optional, however, and attachments for roll film and film packs are available. Each has a dark slide so that they can be interchanged between exposures.

The Graflex, *Series B*, is made in three sizes, $3\frac{1}{4} \times 4\frac{1}{4}$, 4×5 and 5×7 .

DETAILS

	$3\frac{1}{4} \times 4\frac{1}{4}$	4×5	5×7
Dimensions	$5\frac{3}{4} \times 5\frac{5}{8} \times 6\frac{1}{4}$	$6\frac{3}{4} \times 6\frac{1}{4} \times 7\frac{1}{4}$	$9\frac{1}{4} \times 8\frac{1}{4} \times 8\frac{3}{4}$
Weight	4 $\frac{1}{2}$ lbs.	6 $\frac{1}{4}$ lbs.	9 $\frac{3}{4}$ lbs.
Focal length of lens	5 $\frac{1}{2}$ in.	6 $\frac{3}{8}$ in.	8 $\frac{1}{2}$ in.
Closest working distance	24 $\frac{3}{4}$ in.	25 $\frac{3}{4}$ in.	27 $\frac{3}{4}$ in.

PRICES

	$3\frac{1}{4} \times 4\frac{1}{4}$	4×5	5×7
GRAFLEX, <i>Series B</i> , with one cut film holder or one plate holder and Kodak Anastigmat Lens <i>f.4.5</i>	No. 31 \$75.00	No. 32 \$92.00	No. 34 \$145.00
Graflex Roll Holder	No. 51 11.50	No. 53 12.50	No. 54 15.00
Graflex Cut Film Holder	2.50	2.50	3.50
Graflex Cut Film Magazine	14.00	15.25	17.00
Graflex Plate Magazine	14.00	15.25	17.00
Graflex Film Pack Adapter	4.75	5.50	7.50
Graflex Plate Holder	2.50	2.50	3.50
Kodak Pictorial Diffusion Disk	No. 31 5.00	No. 32 5.00	No. 34 6.00
Leather Case for camera and roll holder or cut film magazine	9.00	10.00	15.00
Leather Case for camera and plate magazine	10.00	11.50	16.00
Ground glass focusing panel, to interchange with holder	3.50	4.25	5.75
Kodak Cut Film, doz.67	.93	1.50
Kodak Cut Film, <i>Super Speed</i> , doz.77	1.03	1.65
Kodak Film Pack	No. 518 .90	No. 523 1.10	No. 515 1.90
Eastman Graflex Roll Film, 6 exp.	No. 51 .45	No. 53 .55	No. 54 .95

The prices of cameras and film include the Excise Tax.



Revolving Back
Graflex,
Series B

$3\frac{1}{4} \times 4\frac{1}{4}$
4 x 5

THIS Graflex embodies the reflecting mirror, focal plane shutter, fast lens and quick action advantages plus a further feature: the revolving back.

After giving the back a quarter turn, the camera is held in normal position for photographing a tall object the long way of the film. By permitting a bigger image and avoiding waste space, this convenience is a definite help toward pleasing pictures.

In any *Series B* Graflex, each part coordinates with its fellows, for the Kodak Anastigmat *f*.4.5 is "built in" rather than "attached". And the lens itself, specially made for the specific model it is to fit, has no superior in the whole world of fine optics. Here, then, is a unified instrument, designed as such from the start.

One cut film holder (or one plate holder) is supplied with this camera, which also takes the Graflex Roll Holder, Graflex Cut Film Magazine, Graflex Film Pack Adapter and Graflex Plate Magazine.

Ease of composition and focusing, by virtue of the reflecting mirror, is a genuine advantage at every exposure. And the shutter offers a variety of speeds ranging from 1/10 to 1/1000, supplemented by a slow snapshot of about 1/5 and *time*.

Thus qualified for making well-composed, well-defined, and well-timed negatives, the Revolving Back Graflex, *Series B*, enjoys wide favor among amateurs and professionals alike.

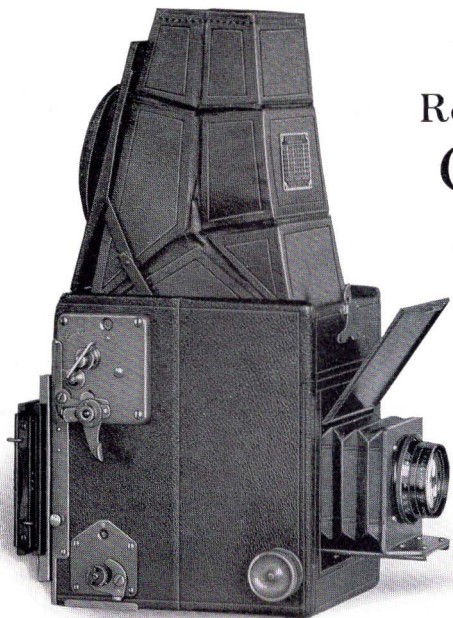
DETAILS

	3¼ x 4¼	4 x 5
Dimensions	6¾ x 5½ x 6⅞	8⅜ x 6⅜ x 7⅞
Weight	5½ lbs.	7¾ lbs.
Focal length of lens	6⅜ in.	7½ in.
Closest working distance	24 in.	27½ in.

PRICES

REVOLVING BACK GRAFLEX, <i>Series B</i> , with one cut film holder or one plate holder and Kodak Anastigmat Lens f.4.5	3¼ x 4¼	4 x 5
No. 32	\$100.00	No. 33 \$116.00
Graflex Roll Holder	No. 51 11.50	No. 53 12.50
Graflex Cut Film Holder	2.50	2.50
Graflex Cut Film Magazine	14.00	15.25
Graflex Plate Magazine	14.00	15.25
Graflex Film Pack Adapter	4.75	5.50
Graflex Plate Holder	2.50	2.50
Kodak Pictorial Diffusion Disk	No. 32 5.00	No. 33 5.00
Leather Case for camera and roll holder or cut film magazine	10.00	12.00
Leather Case for camera and plate magazine	11.50	13.50
Ground glass focusing panel to interchange with holder	3.50	4.25
Kodak Cut Film, doz.67	.93
Kodak Cut Film <i>Super Speed</i> , doz.77	1.03
Kodak Film Pack	No. 518 .90	No. 523 1.10
Eastman Graflex Roll Film, 6 exposures	No. 51 .45	No. 53 .55

The prices of cameras and film include the Excise Tax.



Revolving Back
Graflex,
Series B

$2\frac{1}{4} \times 3\frac{1}{4}$

HERE is the little prodigy of the Graflex family, a small camera that compactly combines all of the advantages described on the preceding two pages.

The reflecting mirror substitutes certainty for guesswork in pictorial arrangement and focusing. Right up to the instant of exposure, the image is in plain sight. When a vertical subject is encountered, the revolving back helps make use of the whole film area. And the self-opening lens shield and self-rising hood save seconds that may save a picture.

Small enough to carry everywhere yet sure of success on any occasion, this is a deservedly popular Graflex. It is easy to use and its capacity covers sports, pets, indoor portraits, bits of landscape, child studies—whatever the enthusiastic amateur is interested in.

When prints bigger than $2\frac{1}{4} \times 3\frac{1}{4}$ are wanted for the wall, the

Kodak Anastigmat's sparkling negatives will produce sharp enlargements.

The lens is an integral part of the camera—that's the *Series B* improvement. Optical and mechanical elements match; excellent pictures are definitely easier to make.

Shutter speeds are from 1/10 to 1/1000, an automatic exposure of 1/5, and *time*—just like larger models. In fact, this Graflex possesses its big brothers' virtues and adds compactness to the list.



The Revolving Back works smoothly and is light-tight in any position.

DETAILS

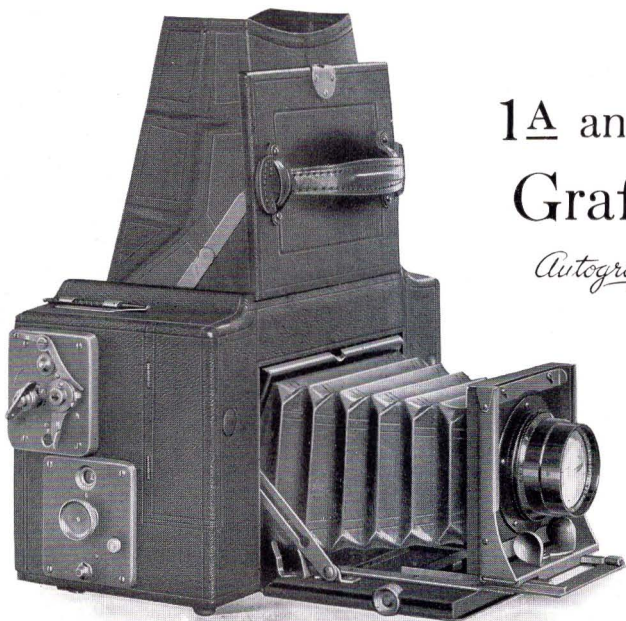
Dimensions, 6 x 4½ x 6¼ in.; weight, 4 lbs.; focal length of lens, 5½ in.; closest working distance, 22½ inches.

PRICES

	2¼ x 3¼
REVOLVING BACK GRAFLEX, <i>Series B</i> , with one cut film holder or one plate holder and Kodak Anastigmat Lens <i>f</i> .4.5, No. 31	\$ 78.00
Graflex Roll Holder, No. 50	11.00
Graflex Cut Film Holder	1.75
Graflex Cut Film Magazine.	12.00
Graflex Plate Magazine	12.00
Graflex Film Pack Adapter	4.50
Graflex Plate Holder.	1.75
Kodak Pictorial Diffusion Disk, No. 31	5.00
Ground glass focusing panel, to interchange with holder	3.25
Leather Case for camera and roll holder or cut film magazine	7.25
Leather Case for camera and plate magazine.	8.50
Kodak Cut Film, doz.46
Kodak Cut Film <i>Super Speed</i> , doz.52
Kodak Film Pack, No. 52050
Eastman Graflex Roll Film, No. 50, 6 exposures.25

The prices of camera and film include the Excise Tax.

72.00
4.50
82.50



1A and 3A Graflex *Autographic*

EACH of these cameras takes regular Kodak Film, makes pictures of a popular size and has the autographic feature—a triple recommendation.

Roll film is a real convenience for it loads in daylight and, with a Kodak Film Tank, is developed in daylight.

The 1A picture is $2\frac{1}{2} \times 4\frac{1}{4}$ and that of the 3A is $3\frac{1}{4} \times 5\frac{1}{2}$ (post-card): two favorite sizes, each of whose oblong area permits easy composition of either a vertical or a horizontal subject.

With the autographic device, an exclusive Eastman refinement, date and title can be written on the film at the time of exposure. This inscription, noted while the facts are fresh, becomes a permanent part of the negative to tell the name, age, description or other information necessary to complete the picture story.

Like other Graflexes, these models have a slow exposure of $1/5$

supplementing twenty-four instantaneous speeds of 1/10 to 1/1000, and *time*. The same reflecting mirror principle is also present and the Kodak Anastigmat *f*.4.5 is truly an optical gem.

The 3A (illustrated opposite) has space in the ends for carrying four extra rolls of either 6- or 10-exposure film: a total capacity of fifty pictures.

Rounded corners and artistic design give the 1A a trimness of line that makes it the smartest looking Graflex of all. Ladies like to carry it.

Both of these unique models are Graflexes in every sense, adding to basic Graflex traits special appointments that the novice appreciates.



The 1A Autographic Graflex, closed to carry, and its case.

DETAILS

	1A ($2\frac{1}{2} \times 4\frac{1}{4}$)	3A ($3\frac{3}{4} \times 5\frac{1}{2}$)
Dimensions	$5\frac{1}{4} \times 3 \times 9\frac{1}{2}$	$6\frac{3}{8} \times 5 \times 10$
Bellows capacity	6½ in.	10 in.
Weight	4¼ lbs.	8 lbs.
Focal length of lens	5½ in.	7½ in.

PRICES

AUTOGRAPHIC GRAFLEX with Kodak Anastigmat	1A	3A
Lens <i>f</i> .4.5	No. 31 \$120.00	No.33 \$150.00
Kodak Pictorial Diffusion Disk	No. 31 5.00	No.33 5.00
Leather Case	6.00	10.00
Extra Lens Board60	.75
Autographic Film Cartridge, 12 exposures, No. A116 for 1A60	
Autographic Film Cartridge, 10 exposures, No. A122 for 3A90
Autographic Film Cartridge, 6 exposures No. A116 for 1A, No. A122 for 3A30	.55

The prices of cameras and film include the Excise Tax.



Compact Graflex

REFLECTING mirror, focal plane shutter, fast lens, choice of cut film, roll film, plates or film packs—these are characteristic Graflex advantages and the camera shown above combines them compactly.

While either model is well suited for all around photography the $3\frac{1}{4} \times 5\frac{1}{2}$, postcard size, is the average amateur's first choice. The generous area of a 5×7 contact print, however, recommends the larger camera for commercial work and similar use.

Of the twenty-four instantaneous speeds regularly found on a Graflex, the $1/1000$ is perhaps less valuable than the $1/10$. And on dull days or indoors, the slow automatic exposure of $1/5$, with Cut Film *Super Speed*, often works where *time* would ordinarily be required.

Thus with the fast, sharp-cutting Kodak Anastigmat *f*.4.5 and the efficient focal plane shutter, the Graflex makes good negatives easily.

On every occasion, the reflecting mirror feature lends confidence to the photographer. For, as he watches the image on the ground glass he *knows* when the focus is sharp, he *sees* what the view includes.

One cut film holder (or one plate holder) is regular equipment but the Graflex Cut Film Magazine, Graflex Film Pack Adapter, Graflex Plate Magazine or Graflex Roll Holder can be used as can also a ground glass panel.

DETAILS

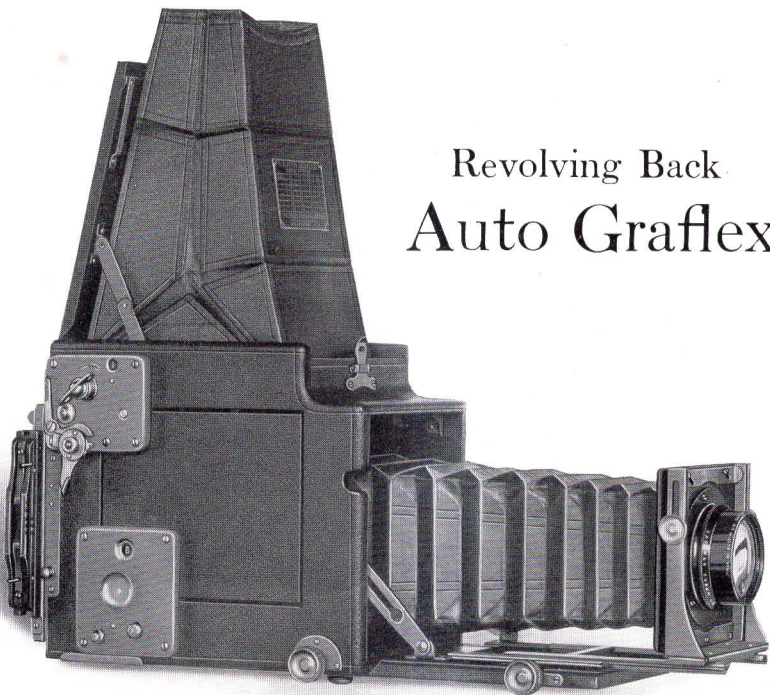
	$3\frac{1}{4} \times 5\frac{1}{2}$	5×7
Dimensions	$7 \times 4\frac{7}{8} \times 7$	$9\frac{1}{2} \times 7 \times 9\frac{1}{2}$
Bellows capacity	10 in.	$12\frac{1}{2}$ in.
Weight with lens	$6\frac{3}{4}$ lbs.	$9\frac{3}{4}$ lbs.
Focal length of lens.	$7\frac{1}{2}$ in.	$8\frac{1}{2}$ in.

PRICES

	$3\frac{1}{4} \times 5\frac{1}{2}$	5×7
COMPACT GRAFLEX with one cut film holder or one plate holder and Kodak Anastigmat Lens <i>f</i> .4.5	No. 33 \$107.00	No.34 \$150.00
Graflex Roll Holder	No. 52 12.50	No.54 15.00
Graflex Cut Film Holder	2.50	3.50
Graflex Cut Film Magazine.	15.25	17.00
Graflex Plate Magazine	15.25	17.00
Graflex Film Pack Adapter	5.50	7.50
Graflex Plate Holder.	2.50	3.50
Kodak Pictorial Diffusion Disk	No. 33 5.00	No. 34 6.00
Ground glass focusing panel, to interchange with holder	4.25	5.75
Leather Case for camera and roll holder or cut film magazine	10.00	13.50
Leather Case for camera and plate magazine.	11.50	15.00
Extra Lens Board75	.90
Kodak Cut Film, doz.93	1.50
Kodak Cut Film <i>Super Speed</i> , doz.	1.03	1.65
Kodak Film Pack	No. 522 1.10	No. 515 1.90
Eastman Graflex Roll Film, 6 exposures	No. 52 .55	No. 54 .95

The prices of cameras and film include the Excise Tax.

Revolving Back Auto Graflex



WITH enough bellows capacity for long focus anastigmats or for single elements of convertible lenses and to do actual size copying or other close-up work, this camera enjoys the widest usefulness of any Graflex. Made in two sizes: $3\frac{1}{4} \times 4\frac{1}{4}$ and 4×5 .

The revolving back, always an aid, is especially helpful behind a long focus lens. Then the big image can be placed either lengthwise or crosswise of the film to use the whole negative area advantageously. The rising front is of further assistance toward good composition.

Twenty-four speeds from $1/10$ to $1/1000$, an indoor snapshot of about $1/5$ and *time* are provided.

Regular equipment includes a cut film holder (or plate holder) but attachments for roll film and film packs can be used.

A ground glass panel is supplied to replace the holder so that the image can be accurately measured or examined for microscopic sharpness.

Because of the particular combination of advantages that it offers, the Revolving Back Auto Graflex is a much-used and much-admired camera among serious workers everywhere.

DETAILS

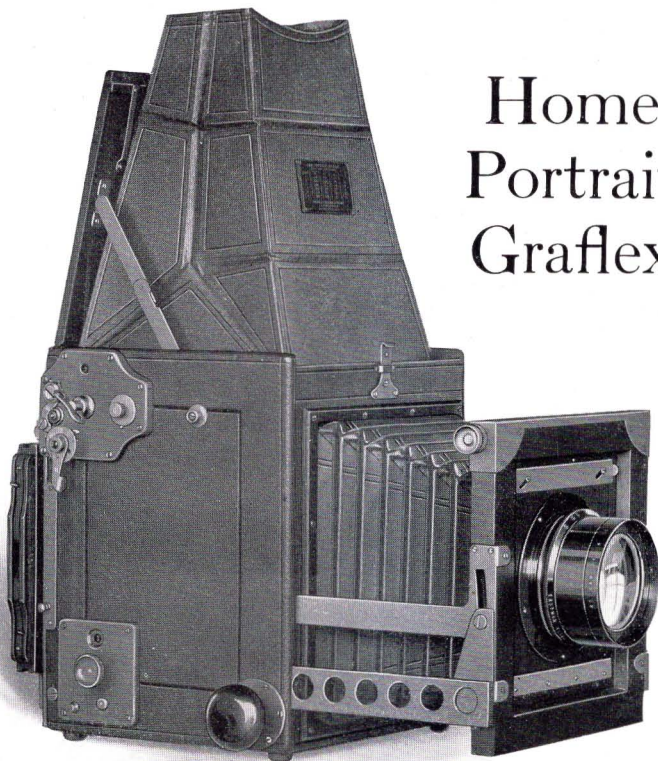
	3¼ x 4¼	4 x 5
Dimensions	8½ x 5½ x 7	10 x 6¼ x 8
Bellows capacity	15½ in.	18½ in.
Weight	5¾ lbs.	7 lbs.
Size of lens board	3¼ x 3¼ in.	3¾ x 3¾ in.
Minimum focus of lenses accommodated	7½ in.	9 in.
Focal length of lenses listed:		
Kodak Anastigmat f.4.5.	No. 33 7½ in.	No. 35 10 in.
B. & L. Tessar, Series Ic, f.4.5	No. 15a 7½ in.	No. 17 9⅞ in.
B. & L. Protar, Series VIIa, f.6.3, complete	No. 10 7⅞ in.	No. 13 9¼ in.
Either element singly	No. 10 13¾ in.	No. 13 16⅝ in.

PRICES

REVOLVING BACK AUTO GRAFLEX, without lens, including focusing panel and one cut film holder or one plate holder	3¼ x 4¼	4 x 5
	\$108.00	\$124.00
With Kodak Anastigmat Lens f.4.5	No. 33 161.00	No. 35 225.00
With B. & L. Tessar Lens, Series Ic, f.4.5	No. 15a 166.50	No. 17 241.00
With B. & L. Protar Lens, Series VIIa, f.6.3	No. 10 195.50	No. 13 237.00
Graflex Roll Holder	No. 51 11.50	No. 53 12.50
Graflex Cut Film Holder	2.50	2.50
Graflex Cut Film Magazine.	14.00	15.25
Graflex Plate Magazine	14.00	15.25
Graflex Film Pack Adapter	4.75	5.50
Graflex Plate Holder.	2.50	2.50
Kodak Pictorial Diffusion Disk	No. 33 5.00	
Leather Case for camera and roll holder or cut film magazine	10.00	12.25
Leather Case for camera and plate magazine.	10.75	13.75
Extra Lens Board75	.90
Kodak Cut Film, doz.67	.93
Kodak Cut Film <i>Super Speed</i> , doz.77	1.03
Kodak Film Pack	No. 518 .90	No. 523 1.10
Eastman Graflex Roll Film, 6 exposures	No. 51 .45	No. 53 .55

The prices of cameras and film include the Excise Tax.

Home Portrait Graflex



THIS instrument couples standard Graflex design with special auxiliary features that make it match the variety of conditions met by the home portrait photographer.

Poor light is aimed at particularly by providing automatic shutter speeds as slow as one second—a frequent substitute for *time*, since the introduction of *Super Speed* film.

The Kodak Anastigmat *f*.4.5 is of 12-inch focal length so that a sizable image can be made on the 5 x 7 film at such a distance that distortion is dodged. But there's bellows capacity for close-up work as well.

Though the reflecting mirror is first aid to composition for professional and amateur alike, the revolving back and swinging front are also definite helps. While changing the focus and raising, lowering or tilting the lens the image is always in view, ready to be recorded at the instant that lighting, composition and expression are right.

A ground glass panel fits the revolving back so that the camera can be focused from the rear when set on a high tripod.

One cut film holder (or plate holder) is included in regular equipment. The film pack adapter, plate magazine, roll holder or cut film magazine can be attached.

The Home Portrait Graflex is intended for portrait-making but its range of speeds—one second to 1/500—covers a wide variety of other uses.

DETAILS

Dimensions, $9\frac{3}{4} \times 9 \times 10\frac{1}{2}$ in.; focal capacity, 15 in.; weight with lens, $16\frac{3}{4}$ lbs.; size of lens board, 5 x 5 in.; minimum focus of lenses accommodated, 10 inches.

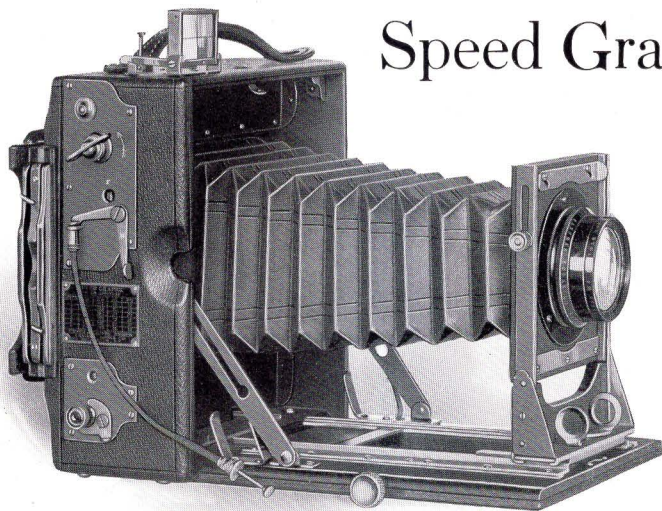
PRICES

5 x 7

HOME PORTRAIT GRAFLEX without lens, including focusing panel and one cut film holder or one plate holder	\$184.00
With Kodak Anastigmat Lens f.4.5, No. 36	344.00
Graflex Roll Holder, No. 54	15.00
Graflex Cut Film Holder	3.50
Graflex Cut Film Magazine	17.00
Graflex Plate Magazine	17.00
Graflex Film Pack Adapter	7.50
Graflex Plate Holder	3.50
Leather Case for camera and roll holder or cut film magazine	22.50
Leather Case for camera and plate magazine	24.00
Extra Lens Board	1.50
Kodak Cut Film, doz.	1.50
Kodak Cut Film <i>Super Speed</i> , doz.	1.65
Kodak Film Pack, No. 515	1.90
Eastman Graflex Roll Film, No. 54, 6 exposures.95

The prices of cameras and film include the Excise Tax.

Speed Graphic



WITH fast lens and fast focal plane shutter, the Speed Graphic is the premier folding camera of the eye-level type. It is the press photographer's preference but it is also splendidly suited for general picture-making.

The 4 x 5, 3¼ x 5½ and 5 x 7 sizes have twenty-four speeds from 1/10 to 1/1000; the 3¼ x 4¼ has eighteen, from 1/10 to 1/500, fast enough with a 5½-inch lens.

A sturdy standard holds the big Kodak Anastigmat *f*.4.5 and the front rises to decrease foregrounds. Either the scale and finder or the built-in ground glass panel may be used in focusing.

The 4 x 5 model marketed after May 1, 1924, is of different dimension from its predecessor and is called the 4 x 5 *Special* Speed Graphic. In purchasing a carrying case for this new camera it is therefore necessary to specify "for 4 x 5 *Special* Speed Graphic."

One cut film holder (plate holder optional) is regularly supplied and a film pack adapter can be attached. Two tripod sockets are provided.

Fine Morocco leather over kiln-dried mahogany is used in the construction of the Speed Graphic. Exposed wood parts are ebonized, exposed metal parts are brass, silver plated, then oxidized. It is a handsome camera, famed for its picture-making capacity.

DETAILS

	$3\frac{1}{4} \times 4\frac{1}{4}$	4×5	$3\frac{1}{4} \times 5\frac{1}{2}$	5×7
Dimensions . . .	$5\frac{3}{4} \times 2\frac{3}{4} \times 6\frac{1}{4}$	$7\frac{1}{4} \times 3\frac{1}{2} \times 7\frac{1}{2}$	$7 \times 3\frac{1}{8} \times 7\frac{1}{2}$	$8\frac{3}{4} \times 3\frac{3}{4} \times 9\frac{3}{8}$
Bellows capacity	10 in.	12 in.	12 in.	16 in.
Weight . . .	$3\frac{1}{4}$ lbs.	$4\frac{3}{4}$ lbs.	$4\frac{3}{4}$ lbs.	$7\frac{1}{4}$ lbs.
Focal length of lens . . .	$5\frac{1}{2}$ in.	$6\frac{3}{8}$ in.	$7\frac{1}{2}$ in.	$8\frac{1}{2}$ in.

PRICES

Including one cut film holder or one plate holder

	$3\frac{1}{4} \times 4\frac{1}{4}$	4×5 <i>Special</i>	$3\frac{1}{4} \times 5\frac{1}{2}$	5×7
Speed Graphic with Kodak Anastigmat Lens f.4.5 . . .	No. 31 \$72.00	No. 32 \$90.00	No. 33 \$93.00	No. 34 \$123.00
Graphic Plate Holder . . .	2.00	2.00	2.00	
Eastman Plate Holder . . .				2.00
Graphic Cut Film Holder . . .	2.00	2.00	2.00	
Eastman Film Holder . . .				2.00
*Leather Case, with lock and key . . .	8.50	10.00	9.00	11.50
Kodak Pictorial Diffusion Disk . . .	No. 31 5.00	No. 32 5.00	No. 33 5.00	No. 34 6.00
Extra Lens Board75	.75	.75	.90
Kodak Cut Film, doz. . .	.67	.93	.93	1.50
Kodak Cut Film <i>Super</i> Speed, doz. . .	.77	1.03	1.03	1.65
Film Pack Adapter . . .	1.50	1.75	1.75	2.50
Kodak Film Pack . . .	No. 518 .90	No. 523 1.10	No. 522 1.10	No. 515 1.90

*Carrying cases for Speed Graphic Cameras accommodate the camera and holders as follows: $3\frac{1}{4} \times 4\frac{1}{4}$, 5 holders; 4×5 *Special*, 6 holders; $3\frac{1}{4} \times 5\frac{1}{2}$, 5 holders; 5×7 , 6 holders. In purchasing case for 4×5 model marketed after May 1, 1924, specify "for *Special* Speed Graphic".

The prices of cameras and film include the Excise Tax.

Graflex Backs for Speed Graphic Cameras

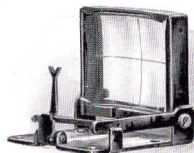
BACKS of Speed Graphic cameras can be altered to take the Graflex Roll Holder (so that Eastman Graflex Roll Film can be used), Graflex Cut Film Magazine, Graflex Cut Film Holder, Graflex Plate Holder, Graflex Film Pack Adapter and Graflex Plate Magazine. The prices include ground glass focusing panel but no plate holder or film holder.

$3\frac{1}{4} \times 4\frac{1}{4}$	4×5	$3\frac{1}{4} \times 5\frac{1}{2}$	5×7
\$13.50	\$13.50	\$13.50	\$14.50

Graphic Sight Finder

A DIRECT-VISION, folding sight finder, to be attached to the top of the camera. The subject is centered on the image area when the intersection of the lines engraved on the finder lens is in direct line with the notch in the top of the vertical sight bar.

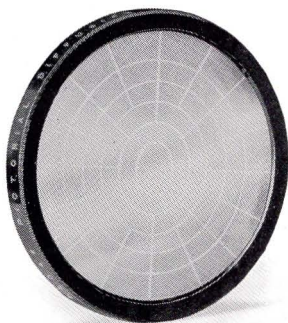
The finder folds compactly, and opens automatically at the release of a spring catch.



PRICES

	$3\frac{1}{4} \times 4\frac{1}{4}$	$3\frac{1}{4} \times 5\frac{1}{2}$	4×5	5×7
Graphic Sight Finder . . .	\$3.50	\$3.50	\$3.50	\$3.50

Kodak Pictorial Diffusion Disk



THIS new auxiliary lens produces a soft, blended effect in the negative without the loss of brilliance that results when the image is thrown out-of-focus. Detail is sharp as ever, but toned down.

Now that it is obtainable this attachment is almost a necessity for photographing landscapes. And it is entirely suited for close-up work, as well, where softened lines will add to the attractiveness of the picture.

A Kodak Pictorial Diffusion Disk slips easily on or off the lens. Disks are now available to fit four of the Kodak Anastigmat lenses *f*.4.5. Order by number.

PRICES

No. 31 Kodak Pictorial Diffusion Disk for No. 31 Kodak Anastigmat <i>f</i> .4.5	\$5.00
No. 32 Kodak Pictorial Diffusion Disk for No. 32 Kodak Anastigmat <i>f</i> .4.5	5.00
No. 33 Kodak Pictorial Diffusion Disk for No. 33 Kodak Anastigmat <i>f</i> .4.5	5.00
No. 34 Kodak Pictorial Diffusion Disk for No. 34 Kodak Anastigmat <i>f</i> .4.5	6.00

Kodak Cut Film

LIGHT weight, small bulk, safety from breakage: these are physical properties that make Kodak Cut Film so pleasant to work with. What is more, it produces superior negatives because it is non-halation and meets every standard for fineness of grain, latitude and gradation.

Kodak Cut Film is as sensitive as the best portrait plates; and Kodak Cut Film *Super Speed* has a much faster emulsion.

Super Speed is the film to use when the subject requires a short exposure or when the light is difficult. For indoor story-telling pictures and portraits, for snapshots in dull light, it is especially valuable. And on easier occasions the protection that its extra speed offers against under-exposure is still worth while.

Kodak Cut Film can be used in a cut film holder, the Graflex Cut Film Magazine, or, with sheaths, in any plate holder.

PRICES

	2¼ x 3¼	3¼ x 4¼	3¼ x 5½	4 x 5	5 x 7
Kodak Cut Film, doz.	\$0.46	\$0.67	\$0.93	\$0.93	\$1.50
Kodak Cut Film <i>Super Speed</i> , doz. .52		.77	1.03	1.03	1.65

The prices of Kodak Cut Film include the Excise Tax.

Kodak Cut Film Sheath

Adapts a plate holder to the use of Kodak Cut Film. It is made of aluminum, ribbed to insure a uniform focal plane. Instantly inserted or removed.

PRICES

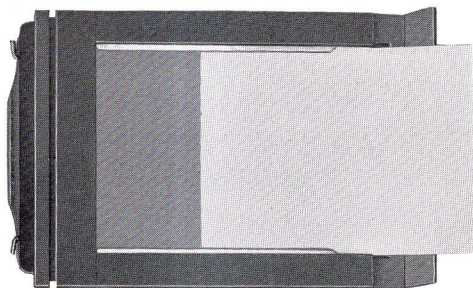
	2¼ x 3¼	3¼ x 4¼	3¼ x 5½	4 x 5
Kodak Cut Film Sheath	\$.10	\$.10	\$.15	\$.15

No. 3 Eastman Film Sheath

For adapting 5 x 7 and 6½ x 8½ plate holders to the use of cut film.

PRICES

	5 x 7	6½ x 8½
No. 3 Eastman Film Sheath	\$.20	\$.25



Graflex Cut Film Holder

ALTHOUGH the Graflex Cut Film Holder looks, and attaches, like a plate holder, the two are quite different in design and operation.

When the dark slide is withdrawn, the end of the frame opens on a hinge as shown in the above illustration. The film slips in or out smoothly, making loading and unloading easy indeed. And the film stays flat, held in narrow channels, the sensitized surface forming a uniform focal plane.

With this device, cut film advantages are available to the user of any Graflex except the 1A and 3A Autographic models, which take cartridge film only.

PRICES

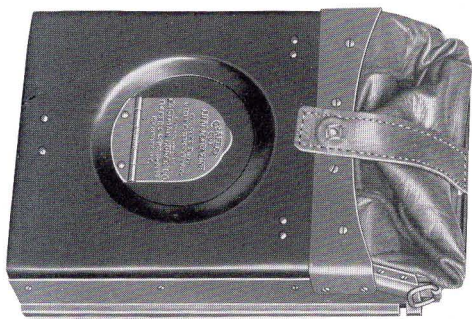
	$2\frac{1}{4} \times 3\frac{1}{4}$	$3\frac{1}{4} \times 4\frac{1}{4}$	$3\frac{1}{4} \times 5\frac{1}{2}$	4 x 5	5 x 7
Graflex Cut Film Holder	\$1.75	\$2.50	\$2.50	\$2.50	\$3.50

Graflex Plate Holder

Prices given for Graflex Cut Film Holders apply also to the corresponding sizes of Graflex Plate Holders.

Holders for Use on Graphic Cameras

Cut film holders and plate holders for Speed Graphic Cameras are listed on page 23.



Graflex Cut Film Magazine

AN attachment that arms the Graflex for a dozen exposures without reloading. It carries twelve films, ready for use, each in a metal septum. By means of a sliding rod, the septum containing an exposed film is drawn into a light-tight leather bag (shown folded) and re-inserted behind the other films.

Each septum bears a numeral so that the number of exposures made since loading may be quickly told by looking through the ruby window that lies underneath the small spring flap on the back.

The Graflex Cut Film Magazine may be detached from the camera at any time and one or more films removed in a darkroom without waiting for all twelve to be exposed. When the camera is placed in its case, the magazine stays right in position—ready.

DETAILS

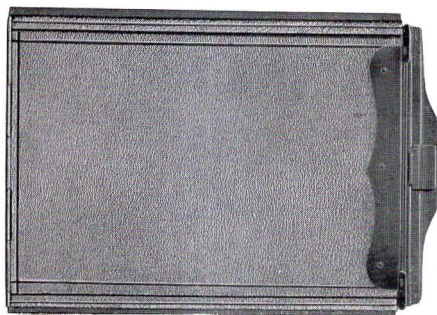
	$2\frac{1}{4} \times 3\frac{1}{4}$	$3\frac{1}{4} \times 4\frac{1}{4}$	$3\frac{1}{4} \times 5\frac{1}{2}$	4×5	5×7
Dimensions	$5\frac{1}{8} \times 3\frac{1}{4} \times 1\frac{3}{8}$	$6\frac{1}{4} \times 4\frac{1}{4} \times 1\frac{3}{8}$	$7\frac{5}{8} \times 3\frac{7}{16} \times 1\frac{5}{16}$	$7 \times 5 \times 1\frac{5}{16}$	$9\frac{1}{4} \times 6\frac{1}{4} \times 1\frac{5}{8}$
Weight loaded	12 oz.	18 oz.	1½ lbs.	1½ lbs.	2½ lbs.

PRICES

	$2\frac{1}{4} \times 3\frac{1}{4}$	$3\frac{1}{4} \times 4\frac{1}{4}$	$3\frac{1}{4} \times 5\frac{1}{2}$	4×5	5×7
Graflex Cut Film Magazine	\$12.00	\$14.00	\$15.25	\$15.25	\$17.00

Graflex Plate Magazine

This attachment is similar to the Graflex Cut Film Magazine, but is necessarily bulkier, and heavier when loaded. Prices are the same as for the Graflex Cut Film Magazine.



Graflex Film Pack Adapter

WITH this attachment in use, the Graflex, unless it is a 1A or 3A Autographic, loads in daylight with Kodak Film Packs. Twelve exposures may be made without re-loading; the Film Pack Tank (see page 31) provides easy means of developing several films at once.

The Graflex Film Pack Adapter is covered with leather like that found on Graflex cameras themselves.

PRICES

	$2\frac{1}{4} \times 3\frac{1}{4}$	$3\frac{1}{4} \times 4\frac{1}{4}$	$3\frac{1}{4} \times 5\frac{1}{2}$	4×5	5×7
Graflex Film Pack Adapter	\$4.50	\$4.75	\$5.50	\$5.50	\$7.50

Kodak Film Packs

EACH pack contains twelve non-curling, non-halation, properly orthochromatic films. Single films can be taken from the pack in a darkroom without waiting until all are exposed.

After each picture a paper tab is withdrawn and torn off, uncovering an unused film, ready for the next subject. Thus, as many as a dozen exposures can be made in quick succession.

PRICES

$2\frac{1}{4} \times 3\frac{1}{4}$	$3\frac{1}{4} \times 4\frac{1}{4}$	$3\frac{1}{4} \times 5\frac{1}{2}$	4×5	5×7
No. 520, \$0.50	No. 518, \$0.90	No. 522, \$1.10	No. 523, \$1.10	No. 515, \$1.90

The prices of Kodak Film Packs include the Excise Tax.



Graflex Roll Holder

QUICKLY attached to any Graflex (except the 1A and 3A Autographic models), this device permits the use of Eastman Graflex Roll Film. The advantages are obvious: the film is loaded in daylight and can be daylight-developed in a Kodak Film Tank.

The current Graflex Roll Holder is an improved model in which the spools stay parallel and friction is avoided. A retarding ratchet keeps the film flat and taut. After inserting the dark slide the holder can be detached and re-attached between exposures but the camera goes into the case without its removal.

PRICES GRAFLEX ROLL HOLDERS

3¼ x 2¼	For Graflex Roll Holder Film No. 50	\$11.00
4¼ x 3¼	For Graflex Roll Holder Film No. 51	11.50
5½ x 3¼	For Graflex Roll Holder Film No. 52	12.50
5 x 4	For Graflex Roll Holder Film No. 53	12.50
7 x 5	For Graflex Roll Holder Film No. 54	15.00

Graflex Roll Holders will fit Graflex cameras only.

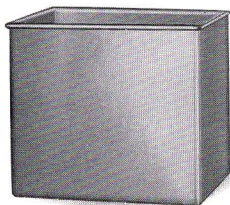
Eastman Graflex Roll Film

No. 50, 3¼ x 2¼, 6 Exposures	\$ 0.25
No. 51, 4¼ x 3¼, 6 Exposures45
No. 52, 5½ x 3¼, 6 Exposures55
No. 53, 5 x 4, 6 Exposures55
No. 54, 7 x 5, 6 Exposures95

To avoid error, order film by number.

The prices of Eastman Graflex Roll Film include the Excise Tax.

Kodak Developing Box No. 1



UNIFORM development of Kodak Cut Film by the time and temperature method is quick and easy with this box. It is made of Monel metal and measures $4 \times 5\frac{1}{4} \times 6$ inches.

Twelve $2\frac{1}{4} \times 3\frac{1}{4}$, $3\frac{1}{4} \times 4\frac{1}{4}$, $3\frac{1}{4} \times 5\frac{1}{2}$ or 4×5 films, each in a Kodak Cut Film

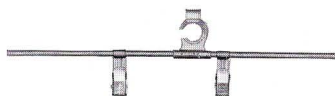
Developing Hanger, can be developed at one time.

THE PRICE

Kodak Developing Box No. 1, without hangers \$2.00

Kodak Cut Film Developing Hanger

THIS hanger is nine inches long so that it lies securely across the six-inch top of a Kodak Developing Box No. 1. Each film is gripped by two easily operated, Monel metal clips.



THE PRICE

Kodak Cut Film Developing Hanger, each \$.20

Eastman Developing and Fixing Box

For the larger sizes of cut film. During development or fixing, the films are suspended in Eastman Film Developing Hangers No. 4. The box is made of hard rubber.

PRICES

	No. 2 for 8 5 x 7 films	No. 3 for 20 5 x 7 or 12 6½ x 8½ films
Eastman Film Developing and Fixing Box	\$4.00	\$6.00

Eastman Film Developing Hanger No. 4

A strong, light metal frame, which holds the film securely in channels, without clips.

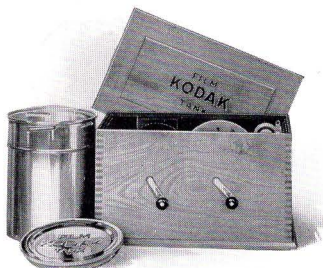
PRICES

	5 x 7	6½ x 8½
Eastman Film Developing Hanger No. 4	\$.60	\$.75

Kodak Film Tank

FOR daylight development of Eastman Graflex Roll Film, used in Graflex Roll Holders, and of Kodak Film, used in the 1A and 3A Autographic Graflex cameras.

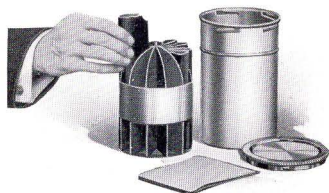
Each exposure on the roll yields its best by this method.



PRICES

3½-inch Kodak Film Tank, for 3¼ x 5½ (3A) Kodak Film, 2½ x 4¼ (1A) Kodak Film and 3¼ x 2¼ Eastman Graflex Film No. 50 . . .	\$5.50
5-inch Kodak Film Tank, for 4¼ x 3¼ Eastman Graflex Film No. 51 . . .	6.50
7-inch Kodak Film Tank, for 5½ x 3¼ Eastman Graflex Film No. 52, 5 x 4 Eastman Graflex Film No. 53 and 7 x 5 Eastman Graflex Film No. 54 . . .	8.00

Film Pack Tank



A DIVIDED metal cage and cup comprise this outfit for developing all or part of a film pack at one time.

In loading, each film is slipped into a compartment, as shown. The cage is then lowered into the developer that is contained in the solution cup, which is light-tight when covered.

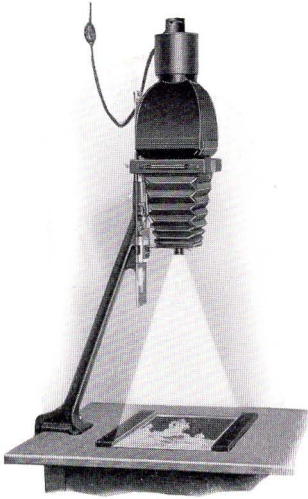
By following the time and temperature method, negatives of uniform quality are produced.

The Film Pack Tank is made in three sizes. Two are designed to hold twelve films; the third holds six 5 x 7 films.

PRICES

Film Pack Tank No. 1, for twelve 2¼ x 3¼ films	\$1.75
Film Pack Tank No. 2, for twelve 3¼ x 4¼, 3¼ x 5½, or 4 x 5 films . . .	3.50
Film Pack Tank No. 3, for six 5 x 7 films	4.00

Kodak Auto-Focus Enlarger



BIG prints bring out the full charm of sharp negatives. And they are now so easy to make, with the Kodak Auto-Focus Enlarger. Racking and pulling are eliminated. As the camera is raised or lowered to change the size of the image, a cam keeps the focus exactly sharp.

The mechanism is so simple and accurate that enlarging with this equipment is fully as easy and almost as fast as contact printing.

A padded clamp attaches the Kodak Auto-Focus Enlarger to any ordinary table. A quickly adjusted holder keeps the bromide paper in position without the use of tacks or clips.

Prints from $1\frac{1}{2}$ to $3\frac{1}{2}$ diameters can be made from either plate or film negatives up to 4 x 6 inches. The largest possible print is 14 x 21 inches. A Vest Pocket Kodak negative makes a $5\frac{5}{8}$ x $8\frac{3}{4}$ enlargement; a $2\frac{1}{4}$ x $3\frac{1}{4}$ negative produces a $7\frac{7}{8}$ x $11\frac{3}{8}$ enlargement.

The lens is a Kodak Anastigmat, which assures the best possible definition in the print. A special diffusing disc is supplied separately, for obtaining soft focus effects.

PRICES

(Including Excise Tax)

Kodak Auto-Focus Enlarger with Kodak Anastigmat lens, electric cord and plug (without lamp), set of six flexible metal masks	\$35.00
Diffusing Disc, for soft focus effects	1.00

Eastman Bromide Papers

Following are prices per dozen of the most popular of the sixteen sizes in which Eastman Bromide Papers, double weight, are listed:

PRICES

5 x 7—\$0.60;	$6\frac{1}{2}$ x $8\frac{1}{2}$ —\$1.00;	7 x 11—\$1.40;	8 x 10—\$1.40;
10 x 12—\$2.15;	11 x 14 —\$2.65;	14 x 17—\$3.95;	16 x 20—\$5.25.

The Kodak Album



LOOSE-LEAF, open-back style—made of finest quality genuine leather and surfaced in new patterns: the black in an etched crystalline, the seal brown in a rich Indian weave, the blended olive in a pine needle effect. Stamped in gold leaf with the word “Photographs.” Fifty black, round-cornered leaves held in place

with a silk finished cord through cover and metal tubes.

5 x 8, RA, Black Crystline \$2.25	WA, Brown Weave \$2.25	SA, Olive Pine Needle \$2.25
7 x 11, RB, Black Crystline 3.25	WB, Brown Weave 3.25	SB, Olive Pine Needle 3.25
10 x 12, RC, Black Crystline 4.50	WC, Brown Weave 4.50	SC, Olive Pine Needle 4.50
11 x 14, RD, Black Crystline 5.50	WD, Brown Weave 5.50	SD, Olive Pine Needle 5.50

Package 12 extra leaves, Size A (5 x 8) \$0.15; Size B (7 x 11) \$0.18;
Size C (10 x 12) \$0.30; Size E (11 x 14) \$0.40

The Altadena Album

LOOSE-LEAF, open-back style. Cover is de luxe artificial leather, deep brown, Morocco grain finished. The word “Photographs” brought up in heavy engraving. Deep embossed panels at each end add finish to this handsome album.



Fifty black leaves held in place by silk-finished cord through cover.

A, 5 x 8 \$1.50	B, 7 x 11 \$2.00
---------------------------	----------------------------

Package, 12 extra leaves, Size A (5 x 8) \$0.15; Size B (7 x 11) \$0.18

The Colonial Album



LOOSE-LEAF, open-back style. Cover is of de luxe artificial leather. The beautiful design in polychrome covers the entire surface. In the center the words “Ye Photo Album” are raised embossed in color. Fifty black leaves held in place

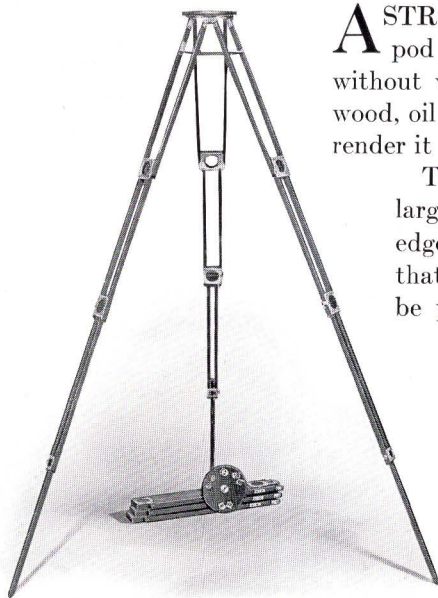
by silk-finished cord through cover and metal tubes. This is a most attractive album.

A, 5 x 8 \$1.90	B, 7 x 11 \$2.50	C, 10 x 12 \$3.25	D, 11 x 14 \$3.50
-----------------	------------------	-------------------	-------------------

Package 12 extra leaves, Size A (5 x 8) \$0.15; Size B (7 x 11) \$0.18;

Size C (10 x 12) \$0.30; Size E (11 x 14) \$0.40

Crown Tripod



ASTRONG, rigid, telescopic tripod that holds a heavy camera without vibrating. Made of cherry wood, oil soaked, then shellacked to render it waterproof.

The head of this tripod is large and substantial. Near its edge is a second screw socket so that the weight of a camera can be properly distributed when the bellows is extended.

Expansion brackets keep the legs firmly attached when in use; binding screws cannot be lost; joints fit snugly. A well-designed, and sturdily built tripod.

DETAILS

Length closed	Length extended	Weight	Diameter of top	Weight of camera carried
No. 1—16 in.	4 ft. 4 in.	36 oz.	4 in.	6 lbs.
No. 2—17 in.	4 ft. 8 in.	65 oz.	6 in.	9 lbs.
No. 4—20 in.	5 ft. 6 in.	90 oz.	6½ in.	18 lbs.

PRICES

Crown Tripod	No. 1, \$9.00	No. 2, \$10.00	No. 4, \$12.50
------------------------	---------------	----------------	----------------

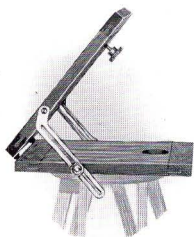
Carrying Case for Crown Tripods

A sole leather case consisting of a long compartment for the Crown Tripod legs, and a smaller compartment to hold the tripod top. Made for Crown Tripods Nos. 1 and 2 only.

PRICES

No. 1, for Tripod No. 1	\$6.00	No. 2, for Tripod No. 2	\$7.25
-----------------------------------	--------	-----------------------------------	--------

Crown Tilting Tripod Top



WITH this device in use on a Crown Tripod, the camera can be pointed upward or downward, at any angle from horizontal to vertical, without adjusting the tripod legs.

PRICES

No. 1 Crown Tilting Tripod Top, for 4 in. head \$2.75

No. 2 Crown Tilting Tripod Top, for 6 in. head 3.00

Eastman Metal Trimmer No. 10

A STURDY trimmer that cuts easily and precisely. Its table measures ten inches each way, is engraved in squares, has a brass ruler and a transparent trimming guide.



THE PRICE

Eastman Metal Trimmer No. 10, finished in polished enamel \$15.00

Kodak Amateur Printer



A SELF-CONTAINED outfit for making white margin prints from film negatives of any size from $1\frac{5}{8}$ x $2\frac{1}{2}$ up to 4 x $5\frac{1}{2}$ inches. A small ruby bulb within the box provides light by which to adjust film, mask and paper, and latching the hinged pressure board automatically turns on a 60-watt Mazda lamp for the exposure. The position of this lamp can be changed

to give even illumination on negatives of various sizes. An orange window in the side serves as a safelight while developing prints.

THE PRICE

Kodak Amateur Printer, with complete electrical equipment except 60-watt Mazda bulb \$10.00

Velox

"Look for VELOX on the back"

FOR the protection of every camerist—and of the careful finisher—Velox, the only paper made exclusively for amateur negatives, is now easily identifiable. The word "Velox" is faintly tinted, yet readily readable, on the back of each sheet. Its presence is proof that the finisher has used the paper that will produce the best print. Look for Velox on the back.

Because Velox is made especially for the amateur's negatives it compensates for the uncontrolled light by which his exposures are usually made.

And it also partially corrects errors in timing, often producing a better print than the negative promises.

Velox is a developing-out paper, easy to handle, furnished in four degrees of contrast, designated numerically. Each group—1, 2, 3 or 4—contains a variety of surfaces as shown in the table above.

No. 1 obtains the best possible results from *extremely* contrasty negatives; No. 2 is used with average as well as contrasty negatives; No. 3 gets the most out of flat negatives; No. 4 will produce the best print from exceedingly thin or exceedingly flat negatives.

All Velox is non-abrasion.

Velvet Velox gives semi-gloss prints of exceptional quality and is most used.

GRADE	SURFACE	CONTRAST			
Velvet Velox	Semi-Gloss	*1	*2	*3	*4
Portrait Velox	Smooth Matte	2			
Carbon Velox	Matte	1	2	3	4
Glossy Velox	Enameled	1	*2	*3	4

*Furnished also in Double-weight Velox. Double-weight papers require no mount and when printed under a mask, which will insure a white margin, offer a very artistic effect.

PRICE

Size Inches	Single Weight			Double Weight		
	Dozen	½ Gross	Gross	Dozen	½ Gross	Gross
1½ x 2½	\$0.12		\$1.10	\$0.15		\$1.40
2½ x 3½	.12		1.10	.15		1.40
2½ x 4½	.15		1.35	.20		1.70
3½ x 4½	.20		1.75	.25		2.20
2½ x 4½	.20		1.75	.25		2.20
3½ x 5½	.20		2.00	.25		2.50
4 x 5	.25		2.30	.30		2.90
5 x 7	.40	\$2.10	3.90	.50	\$2.60	4.90
Velox Post-cards, 3½ x 5½, furnished in Velvet, Contrasts Nos. 1, 2, 3 and 4; Glossy, Contrasts Nos. 2 and 3						
				.30	1.50	2.90
Velox Double Post-cards, 3½ x 11 inches						
				.60	3.00	5.80

Velox Sundries

Eastman M. Q. Tubes, per package of five	\$0.30
Nepera Solution, per 4-ounce bottle28
Ditto, per 16-ounce bottle84
Nepera Auxiliary Powders (for converting Nepera Solution to a film or plate developer), per package, 1 dozen35
*Velox Re-developer Tubes, for sepia toning, per package 12 tubes	1.08
Velox Liquid Hardener, per 4-ounce bottle25
Ditto, 8-ounce bottle35
Kodak Acid Fixing Powder for fixing Velox Prints, per pound25
Ditto, $\frac{1}{2}$ pound15
Ditto, $\frac{1}{4}$ pound10

*Package also includes bleaching agent.

Flash-light Materials

FLASH-LIGHT equipment makes the amateur photographer independent of daylight by providing easily controlled, artificial illumination. He can throw the right amount of light in the right direction.

The simplest method of making flash-light pictures is by means of the Eastman Flash Sheets and Kodak Flash Sheet Holder. The sheets burn slowly, giving a broad soft light, while the holder makes their proper use conveniently easy.



No. 1 Flash Sheets, per package of $\frac{1}{2}$ dozen sheets, 3 x 4-inch	\$0.35
No. 2 Flash Sheets, per package of $\frac{1}{2}$ dozen sheets, 4 x 5-inch56
No. 3 Flash Sheets, per package of $\frac{1}{2}$ dozen sheets, 5 x 7-inch84
Kodak Flash Sheet Holder	1.25

Flash cartridges are recommended only where instantaneous exposures are required.

Eastman Spreader Flash Cartridges, for use with pistol or fuse (Price includes both fuse and cap), per package of $\frac{1}{2}$ dozen	\$0.60
Eastman Spreader Flash Cartridge Pistol	1.50
Eastman No. 1 Flash Cartridges, for use only with fuse, per pack- age of $\frac{1}{2}$ dozen	1.25
Ditto No. 280
Ditto No. 350

Eastman Safelight Lamp



THIS well-built metal lamp hangs from an electric cord or fixture, takes a 10-watt bulb and is especially recommended for use over work table and trays. Unless otherwise specified the 5 x 7 Safelight supplied is of Series 2, for use with films or plates.

PRICES

Eastman Safelight Lamp, without bulb	\$ 3.00
Extra Safelight, 5 x 7, any series75

Kodak Safelight Lamp

A CONVENIENT lamp by which to examine negatives during development. Made of durable metal, white enameled inside. Electric fittings, except the 25-watt bulb, are included.

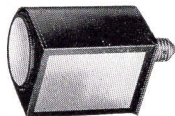
A 5 x 7 Safelight, Series 1, for use with films or plates not color sensitive, is supplied unless otherwise ordered.



PRICES

Kodak Safelight Lamp, without bulb	\$ 3.50
Extra Safelight, 5 x 7, any series75

Brownie Safelight Lamp



TO fit over a 10-watt bulb and screw into any electric socket. Contains Series 1 Safelight, unless otherwise ordered, in end and side.

PRICES

Brownie Safelight Lamp, without bulb	\$ 1.75
Extra Circular End Safelight, any series25
Extra Rectangular Safelight, any series40

Safelights

Available for safelight lamps described on the opposite page:

Series 00—Yellow light, for use with developing-out papers.

Series 0 —Bright orange light, for use with bromide paper and lantern plates.

Series 1 —Orange safelight, for use with films or plates not highly color sensitive.

Series 2 —Safelight for extra rapid orthochromatic plates sensitive to green but not red.

Series 3 —Green safelight, for use with red-sensitive panchromatic plates.

Series 4 —Bright green safelight, for use with ordinary plates, for those who cannot use a red light. Not safe for orthochromatic plates.

Kodak Anastigmat *f*.4.5

HERE is the reward of the Kodak company's ambition to produce a lens that would challenge every optical standard—a lens that was Kodak made, from scientist's formula to expert's final test.

The Kodak Anastigmat *f*.4.5 is big and fast. For difficult, slow snapshots as well as for action subjects at high shutter speeds, the abundance of light passed by this lens helps get proper exposure.

For definition and flatness of field the Kodak Anastigmat *f*.4.5 is unexcelled. Even at full aperture it makes a clean-cut image throughout the picture area—the border of its negative produces as sharp an enlargement as the center does.

Each Kodak Anastigmat *f*.4.5 is mounted as shown in the illustration, complete with an iris diaphragm controlled by a milled ring on which the *f*. markings are engraved.



No.	Size of Plate covered with Stop <i>f</i> .4.5 Inches	Equivalent Focus in Inches	Price, including Excise Tax, of Lens in barrel with Iris Diaphragm
30	2 $\frac{1}{4}$ x 3 $\frac{1}{4}$	4 $\frac{3}{8}$	\$ 33.00
31	3 $\frac{1}{4}$ x 4 $\frac{1}{4}$	5 $\frac{1}{2}$	37.50
32	4 x 5	6 $\frac{3}{8}$	43.50
33	3 $\frac{1}{4}$ x 5 $\frac{1}{2}$	7 $\frac{1}{2}$	53.50
34	5 x 7	8 $\frac{1}{2}$	66.50
35	6 $\frac{1}{2}$ x 8 $\frac{1}{2}$	10	115.00
36	8 x 10	12	160.00

Tested Chemicals



CERTAINTY in making negatives and prints depends as much on the quality of chemicals used as on any other one thing. All Kodak chemicals are tested, both photographically and for purity, before the E. K. C. seal is allowed to go on them.

Eastman Chemical Outfit consists of M. Q. and Special Developers, Intensifier, Reducer and Velox Re-developer	\$0.40
Eastman Special Developer Powders, per package of 5, in sealed glass tubes	.35
Eastman M. Q. Developer, per package of 5 tubes	.30
Eastman Hydrochinon Developer Powders, per ½ dozen	.30
Ditto, per package of 5 powders, in sealed glass tubes	.30
Eastman Pyro Developer Powders, per ½ dozen	.25
Ditto, per package of 5 powders, in sealed glass tubes	.25
Eastman Tropical Developer, 5 powders, in sealed glass tubes	.40
Tozol, per 1-ounce bottle	.45
Elon, per ounce	.55
Kodelon, per ounce	.47
Hydrochinon, per 1-ounce can	.23
Eastman Permanent Crystal Pyro, per 1-ounce bottle	.27
Velox Re-developer tubes, package of 12 tubes	1.08
Hyposulphite of Soda, granular, per pound	.18
Alum, powdered, per pound	.20
Kodak Acid Fixing Powder, per pound package	.25
Ditto, per ½-pound package	.15
Ditto, per ¼-pound package	.10
Eastman Intensifier, in glass tube, per tube	.15
Eastman Reducer and Stain Remover, per box of 5 tubes	.50
Eastman Opaque No. 1, per tube	.25
Potassium Bromide, granular, per ounce	.10
Acetic Acid, 28 per cent pure, per 1-pound bottle	.35
Citric Acid, 4-ounce bottle	.38
Eastman Tested Carbonate of Soda (desiccated), per 1-pound bottle	.40
Eastman Tested Sulphite of Soda (desiccated), per 1-pound bottle	.45

For Velox preparations, see page 37.

Terms

THE prices in this catalogue are strictly net, except to regular dealers who carry our goods in stock. These prices are subject to change without notice. For the convenience of our customers we recommend that they make their purchases from a dealer in photographic goods, as by so doing they can save both time and transportation charges.

EASTMAN KODAK COMPANY

Folmer & Schwing Department

ROCHESTER, N. Y.

