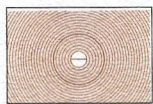
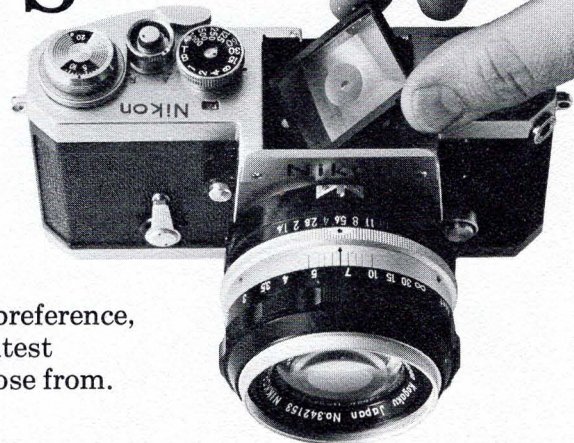
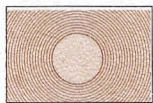


Interchangeable FINDER SCREENS for Nikon slr's

Screen interchangeability gives the Nikon owner a freedom of choice and versatility he gets with no other camera. Whatever the situation or preference, he can select and use the screen that will provide the greatest viewing comfort and focusing accuracy. He has 18 to choose from.



Type A* Matte Fresnel field with split-image rangefinder spot and 12mm diameter circle. For general photography with lenses to medium telephoto.



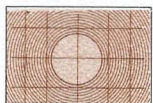
Type B* Matte Fresnel field and 12mm diameter fine-ground matte spot. For general photography; especially suited for use with long-focus lenses.



Type C Fine-ground matte field with clear spot and cross-hair reticle. Especially suitable for photomicrography and other applications involving high magnification where aerial image and parallax focusing are an advantage.*



Type D All-matte fine-ground surface. For specialized copy photography and for use with high-magnification lenses.



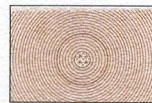
Type E* Matte Fresnel field and fine-ground matte spot with etched vertical and horizontal reference lines. For architectural photography and other applications requiring accurate image placement or alignment.



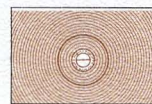
Type G Series* Clear Fresnel field with 12mm diameter microprism focusing spot. Provides extremely brilliant image for viewing and focusing in poor light. Available in 4 models having individual Fresnel patterns for use with specific lenses. (See chart on reverse side for details).



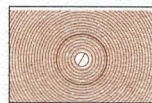
Type H Series Clear Fresnel field with microprism pattern over entire screen area. Permits rapid focusing on any part of screen image, with optimum edge-to-edge brightness. Suitable for use in poor light and with moving subjects. Available in 4 models, as type G.



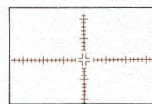
Type J* Matte Fresnel field with small microprism focusing spot and 12mm diameter circle. For general photography with any lens.



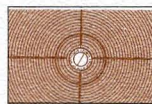
Type K* Matte Fresnel field with split-image rangefinder spot surrounded by microprism ring. For general photography with any lens.



Type L* Similar to Type A but with split-image spot set at 45° angle. Facilitates focusing on horizontal line.



Type M Clear field with double cross-hair reticle and scales. For aerial-image focusing in photomicrography and other high-magnification work.*



Type P Apollo Screen* Originally developed for U.S. space program. Matte Fresnel field with split-image spot at 45° angle surrounded by microprism ring plus vertical and horizontal lines. For general photography with any lens.

*Shows measuring area favored by "center-weighted" Photomic systems. All screens except types G, H and M permit observation of depth-of-field. (See chart on reverse side.)

*Aerial focusing requires use of focusing finder (6x Magnifying Finder or Right Angle Finder).

SELECTOR CHART FOR NIKON FINDER SCREENS

Nikkor Lens	Screen Type Prod. No.	A	B	C	D	E	G-1	G-2	G-3	G-4	H-1	H-2	H-3	H-4	J	K	L	M	P
		2331	2332	2333	2334	2335	2337	2338	2339	2340	2341	2342	2343	2344	2345	2346	2347	2348	2349
8mm f2.8 Fisheye		XX	XX	XX	XX	XX	XX	XX	—	—	XX	XX	XX	—	XX	XX	XX	—	XX
20mm f3.5		XX	XX	—	—	XX	XX	—	—	—	XX	—	—	—	XX	XX	XX	—	XX
24mm f2.8		XX	XX	—	—	XX	—	XX	—	—	XX	XX	—	—	XX	XX	XX	—	XX
28mm f2		XX	XX	—	—	XX	XX	XX	—	—	X	XX	—	—	XX	XX	XX	—	XX
28mm f3.5		XX	XX	—	—	XX	XX	—	—	—	XX	—	—	—	XX	XX	XX	—	XX
35mm f2		XX	XX	—	—	XX	X	XX	—	—	X	XX	—	—	XX	XX	XX	—	XX
35mm f1.4		XX	XX	—	—	XX	—	XX	—	—	X	XX	—	—	XX	XX	XX	—	XX
35mm f2.8		XX	XX	—	—	XX	XX	—	—	—	XX	X	—	—	XX	XX	XX	—	XX
35mm f2.8 PC		XX	XX	—	—	XX	—	—	—	—	—	—	—	—	XX	XX	XX	—	XX
45mm f2.8 GN		XX	XX	—	—	XX	XX	—	—	—	XX	—	—	—	XX	XX	XX	—	XX
50mm f1.4		XX	XX	—	—	XX	—	XX	—	—	—	XX	—	—	XX	XX	XX	—	XX
50mm f2		XX	XX	—	—	XX	XX	XX	—	—	XX	XX	—	—	XX	XX	XX	—	XX
55mm f1.2		XX	XX	—	—	XX	—	XX	—	—	—	XX	—	—	XX	XX	XX	—	XX
55mm f3.5 Micro-P		XX	XX	—	—	XX	—	X	—	—	—	X	—	—	XX	XX	XX	—	XX
85mm f1.8		XX	XX	—	—	XX	—	XX	—	—	X	XX	—	—	XX	XX	XX	—	XX
105mm f2.5		XX	XX	—	—	XX	—	XX	—	—	X	XX	—	—	XX	XX	XX	—	XX
105mm f4 Bellows		XX	XX	X	XX	XX	—	—	X	—	—	—	—	X	XX	XX	XX	XX	XX
135mm f2.8		XX	XX	X	X	XX	—	XX	—	—	—	XX	—	—	XX	XX	XX	—	XX
135mm f3.5		XX	XX	X	X	XX	—	XX	—	—	—	XX	—	—	XX	XX	XX	—	XX
180mm f2.8		XX	XX	X	X	XX	—	—	XX	—	—	X	X	X	XX	XX	XX	—	XX
200mm f4		XX	XX	X	X	XX	—	XX	—	—	—	XX	—	—	XX	XX	XX	—	XX
200mm f5.6 Medical		XX	XX	—	—	XX	—	—	—	—	—	XX	X	—	XX	XX	XX	—	XX
300mm f4.5		XX	XX	X	X	XX	—	—	XX	—	—	X	XX	X	XX	XX	XX	—	XX
400mm f4.5		XX	XX	X	X	XX	—	—	XX	X	—	—	XX	X	XX	XX	XX	—	XX
500mm f8 Reflex		XX	XX	X	X	XX	—	—	—	—	—	—	—	—	XX	XX	XX	—	XX
600mm f5.6		XX	XX	XX	XX	XX	—	—	XX	XX	—	—	X	XX	XX	XX	XX	—	XX
800mm f8		XX	XX	XX	XX	XX	—	—	XX	XX	—	—	X	XX	XX	XX	XX	—	XX
1000mm f11 Reflex		XX	XX	X	X	XX	—	—	—	—	—	—	X	X	XX	XX	XX	—	XX
1200mm f11		XX	XX	XX	XX	XX	—	—	—	X	—	—	X	XX	XX	XX	XX	—	XX
43-86mm f3.5 Zoom		XX	XX	—	—	XX	—	X	—	—	—	XX	—	—	XX	XX	XX	—	XX
50-300mm f4.5 Zoom		XX	XX	—	—	XX	—	—	XX	XX	—	—	X	XX	XX	XX	XX	—	XX
80-200mm f4.5 Zoom		XX	XX	—	—	XX	—	—	X	—	—	XX	XX	—	XX	XX	XX	—	XX
85-250mm f4 Zoom		XX	XX	—	—	XX	—	—	XX	X	—	—	X	XX	XX	XX	XX	—	XX
200-600mm f9.5 Zoom		XX	XX	XX	XX	XX	—	—	X	XX	—	—	X	XX	XX	XX	XX	—	XX

XX = recommended
 X = suitable
 — = not suitable