

ZEISS IKON

*Cameras*



## ON CHOOSING YOUR CAMERA

It is easier and more satisfactory—and it actually costs less—to use the finely-built camera. Your pictures will be sharper, more brilliant, and there will be more "good ones." Their substantial construction and ease of operation have won for ZEISS IKON the highest place among the World's fine cameras.

### **Camera Types**

To meet varying photographic needs, Zeiss Ikon offers several models in each of the four principal types: (1) the 35mm miniature type; (2) the popular rollfilm cameras; (3) the film-pack type (which also takes cut film and glass plates), and (4) the reflex cameras. All use standard roll film, film-packs, cut film or plates that are readily obtainable everywhere. Choice between the different types depends upon individual preference and the purposes for which the camera is to be used—a subject that should be fully discussed with your dealer.

### **Picture Size**

Advancement in the manufacture of both lenses and film has made picture size relatively unimportant. Enlargements can be made from sharp miniature negatives to any practical size. And this means that now, more than ever before, your camera and its lens should be the finest obtainable.

### **Prices**

Prices vary according to lens speed and focal length, shutter equipment, and whether autofocusing or other devices are included.

---

Zeiss Ikon Cameras are manufactured in factories that have specialized in the building of fine photographic apparatus since 1862. They are sturdy, compact precision instruments of the highest type.

The world's 1938 photographic annuals again show that, for their finest work, more amateur and professional photographers chose ZEISS Lenses than any other kind. 91 years devoted to the design, development and building of precision optical instruments has given to Zeiss lenses a quality that is unsurpassed.

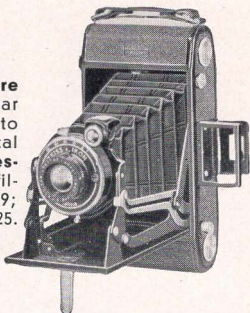
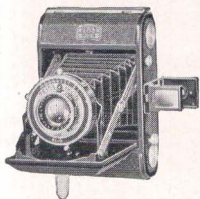
*Cover: Contax Photograph by Le Roy Roselieve*

# Leiss Ikon Cameras

## NETTAR A & C

For Rollfilm

**NETTAR A:** (*below*). **Picture Size:**  $1\frac{5}{8} \times 2\frac{1}{4}$ . **Lens:** Nettar F/4.5, 3". **Shutter:** Klio, 1 to 1/175, T & B. **Finder:** Optical view. **Price:** \$30.00. **Accessories** (extra): All 32mm filters, etc., listed on p. 19; leather carrying case, \$3.25.



**NETTAR C:** (*above*). **Picture Size:**  $2\frac{1}{4} \times 3\frac{1}{4}$ . **Lens:** Nettar F/6.3,  $4\frac{1}{8}$ ". **Shutter:** Telma, 1/25 to 1/125, T & B. **Finder:** Direct vision and brilliant view. **Price:** \$19.00. **Accessories:** All 27mm filters, etc., listed on p. 19; leather carrying case \$3.75.

**T**WO finely built, popular and moderately priced rollfilm cameras. Button opens camera ready for action; simple 2-point setting permits use as fixed focus model for objects at 12 feet or more. Convenient shutter release on body; "delayed action" device allows operator 10 seconds to step into picture. Hinged back. Clear-cutting Zeiss Ikon anastigmat lens. Economical, simple, sturdy.

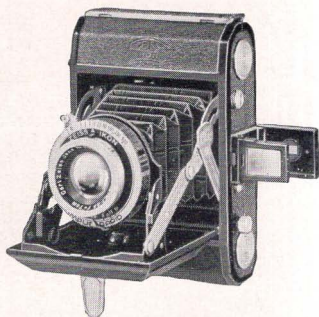




# *Leiss Ikon Cameras*

## **IKONTA A SPECIAL**

**For Rollfilm**



**Picture Size:**  $1\frac{5}{8} \times 2\frac{1}{4}$ .

**Lens:** Zeiss Tessar, F/3.5,  $2\frac{3}{4}$ ".

**Shutter:** Compur Rapid, 1 to 1/500, T & B.

**Price:** \$63.00.

**Accessories** (extra): All 32mm filters, etc., listed on page 19; leather carrying case, \$3.25.

**A**N extremely capable, economical and compact outfit. 16 exposures on standard  $2\frac{1}{4} \times 3\frac{1}{4}$  roll film. Camera and direct vision optical finder open ready for use at touch upon button. Convenient shutter release button on camera body. Hinged back. 2-point setting for fixed focus use. Zeiss Tessar lens makes possible excellent enlargements to any practical size.

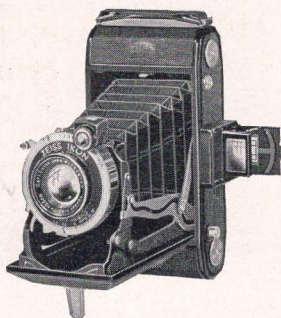


*Ikonta A  
Special takes  
vertical and  
horizontal  
pictures this  
size*

# Zeiss Ikon Cameras

## IKONTA C SPECIAL

For Rollfilm



**Picture Size:**  $2\frac{1}{4} \times 3\frac{1}{4}$ , or (with mask),  $1\frac{5}{8} \times 2\frac{1}{4}$ .

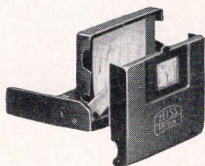
**Lens:** Zeiss Tessar F/3.8 or F/4.5,  $4\frac{1}{8}$ " focus.

**Shutter:** Compur Rapid Self-Timing, 1 to 1/400, T & B.

**Price:** With Tessar F/3.8, \$72.50; with Tessar F/4.5, \$61.00.

**Accessories** (extra): All 37mm filters listed on page 19; leather carrying case, \$3.75.

**A**N especially economical model because insert mask permits making either 8 of the full  $2\frac{1}{4} \times 3\frac{1}{4}$  size pictures, or 16 of the widely popular  $1\frac{5}{8} \times 2\frac{1}{4}$  large miniature exposures, on standard  $2\frac{1}{4} \times 3\frac{1}{4}$  rollfilm. Albada direct vision optical view and brilliant finders. "Delayed action" device built into shutter. Shutter release on camera body. Convenient 2-point setting for fixed focus use. Hinged back: A sturdy, versatile precision instrument for finest work.



### ALBADA VIEW FINDER

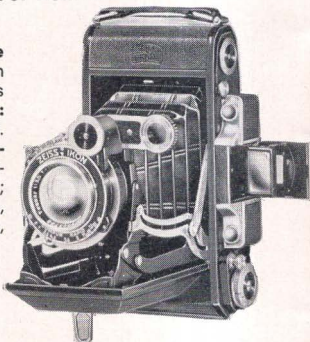
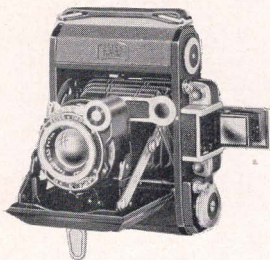
Assures proper centering. Includes large field. White border line frames picture. Especially suitable for fast-moving objects.

# Zeiss Ikon Cameras

## **SUPER IKONTA SPECIAL F/3.5**

**A and C For Rollfilm**

**MODEL A:** (*below*). **Picture Size:** Sixteen  $1\frac{5}{8} \times 2\frac{1}{4}$  on  $2\frac{1}{4} \times 3\frac{1}{4}$  rollfilm. **Lens:** Zeiss Tessar, F/3.5,  $2\frac{3}{4}$ ". **Shutter:** Compur Rapid, 1 to 1/500. T & B. **Price:** \$118.00. **Accessories** (extra): All 32mm filters, etc., listed on page 19; Eveready Carrying Case, \$8.00; leather carrying case, \$3.25.



**MODEL C:** (*above*). **Picture Size:**  $2\frac{1}{4} \times 3\frac{1}{4}$ , or (with mask),  $1\frac{5}{8} \times 2\frac{1}{4}$ . **Lens:** Zeiss Tessar, F/3.5,  $4\frac{1}{8}$ ". **Shutter:** Compur Rapid, Self-Timing, 1 to 1/400, T & B. **Price:** \$130.00. **Accessories** (extra): All 37mm filters, etc., listed on page 19; Eveready Carrying Case, \$9.00; leather carrying case, \$3.75.

**T**HE highest development of the popular rollfilm camera is reached in the Zeiss Ikon Super Ikontas. They are fitted with the Zeiss Tessar lens and Compur shutter. In addition they have an extremely accurate and convenient built-in, automatically focusing range finder that eliminates all guesswork. The Albada direct view finder shows a large field, with the picture neatly framed in white, and is particularly useful in recording rapid action. Convenient body shutter release. Two-point setting for fixed-focus use. A special device prevents accidental double exposures. Model C, with mask, takes 16 pictures  $1\frac{5}{8} \times 2\frac{1}{4}$ ". and has delayed action device built into shutter.

**Special folder on request.**



# *Leiss Ikon Cameras*

## **SUPER IKONTA**

### **C and D For Rollfilm**

#### **MODEL C:** *(not shown)*

**Lens:** Zeiss Tessar, F/4.5,  $4\frac{1}{8}$ ".

**Shutter:** Compur, Self-Timing, 1 to 1/250, T & B. **Price:** \$97.00.

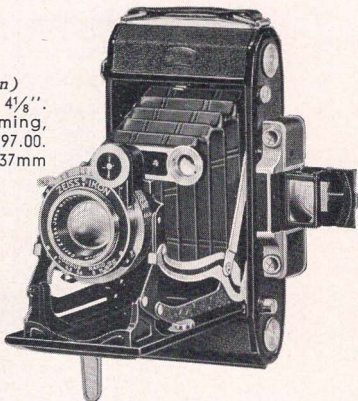
**Accessories** (extra): All 37mm filters, etc., listed page 19; Eveready Carrying Case, \$9.00; leather carrying case, \$3.75.

#### **MODEL D:** *(illustrated)*

**Lens:** Zeiss Tessar, F/4.5,  $4\frac{3}{4}$ ". **Shutter:** Compur

Rapid, Self-Timing, 1 to 1/400, T & B. **Price:** \$107.

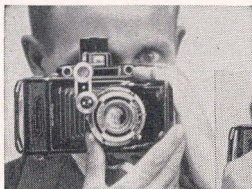
**Accessories** (extra): All 37mm filters, etc., listed page 19; Eveready Carrying Case, \$10.00; leather carrying case, \$4.50.



**T**HESE models, too, have Zeiss Tessar lenses and Compur shutters, the Albada direct view finder, and are fitted with the automatic focusing device described on the preceding page. The difference is that these models have F/4.5 lens speed, and the Model D takes a larger picture. Compact, simple, always ready. Each camera takes pictures of two sizes:

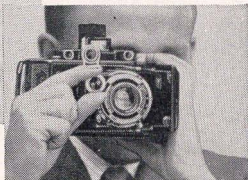
Model C: 8 pictures  $2\frac{1}{4} \times 3\frac{1}{4}$ , or, with mask,  $16-1\frac{5}{8} \times 2\frac{1}{4}$

Model D: 8 pictures  $2\frac{1}{2} \times 4\frac{1}{4}$ , or, with mask,  $16-2 \times 2\frac{3}{8}$



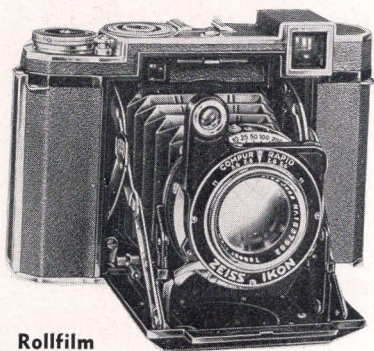
*(Right) Auto-focusing is quick, easy and exact.*

*(Left) Using Albada direct view finder.*



# Leiss Ikon Cameras

## SUPER IKONTA B



### For Rollfilm

**Picture Size:**  $2\frac{1}{4} \times 2\frac{1}{4}$ , (6x6cm).

**Lens:** Zeiss Tessar, F/2.8,  $3\frac{1}{8}$ " (8cm).

**Shutter:** Compur Rapid, Self-Timing, 1 to 1/400, T & B.

**Price:** \$150.00.

**Accessories** (extra): All 37mm filters, etc., listed on page 19; Contameter near focusing device; Albada Sports finder; Prismatic waist-level finder; Eveready case, \$9.00; leather carrying case, \$4.50.

**A**UTOFOCUSING miniature camera with built-in distance meter and optical finder combined in one large opening. Greatest simplicity and ease of operation. Wide range of shutter speeds. Eleven exposures on standard  $2\frac{1}{4} \times 3\frac{1}{4}$ " rollfilm. Easy winding key on top with shutter release next to it. Special device for preventing accidental double exposure. Counter showing number of negatives exposed. Size of camera only  $6 \times 3\frac{3}{4} \times 2$ ". Fits your coat pocket. Weight only 2 lbs.

An ideal camera for photographers who prefer a modern miniature camera making a somewhat larger size negative. A very popular model. Special folder on request.



# Leiss Ikon Cameras

## **IKOFLEX II**

**For Rollfilm**

**Picture Size**

**2 1/4 x 2 1/4"**



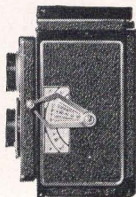
**Lens:** Zeiss Tessar, F/3.5, 3".

**Shutter:** Compur Rapid, 1 to 1/500, T & B.

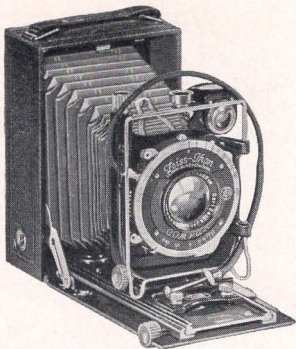
**Price:** \$95.00.

**Accessories** (extra): All 28.5mm filters, etc., listed on page 19; Eveready case, \$9.00. Near focusing supplementary lenses, 3' to 1 1/2', or 1 1/2' to 1', \$6.00 per pair.

**T**HIS advanced model of a 2 1/4 x 2 1/4" reflex camera will appeal to the most exacting photographer. Twelve exposures on standard eight exposure 2 1/4 x 3 1/4" rollfilm. Equipped with fast F/3.5—7.5 cm Zeiss Tessar lens in Compur Rapid shutter. Extra brilliant full-size viewing image with even illumination to edge of screen. Strong magnifier in hood for very fine focusing. Automatic film counter, visible from top of camera, resets to zero when camera is unloaded. Many other new features including new type focusing lever which automatically indicates diaphragm setting for required depth of focus. Eye level direct view finder.



# *Leiss Ikon Cameras*



## **MAXIMAR**

### **A and B**

**For Plates and  
Filmpacks**

**Picture Size:** Model A, filmpack,  $2\frac{1}{4} \times 3\frac{1}{4}$ ; plates,  $2\frac{1}{2} \times 3\frac{1}{2}$  (6.5x9cm). Model B, filmpacks or plates,  $3\frac{1}{2} \times 4\frac{3}{4}$  (9x12cm).

**Lens:** Zeiss Tessar F/4.5. Model A,  $4\frac{1}{8}$ "; Model B,  $5\frac{1}{4}$ ".

**Shutter:** Compur Self-Timing; Model A, 1 to  $1/400$ , T & B; Model B, 1 to  $1/200$ , T & B.

**Prices:** Model A, \$61.50; Model B, \$71.50.

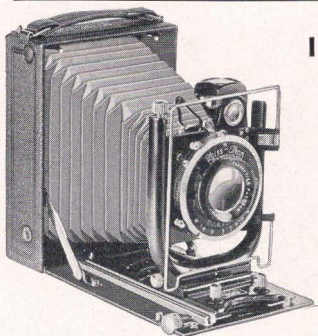
**Accessories** (extra) Model A, all 32mm filters, etc., listed on p.19; Model B, all 42mm filters, etc., listed on p.19. Leather carrying case, either A or B, \$5.50.

**T**HESE cameras embody many features of the more advanced "Ideal models," yet are moderately priced. Both have double bellows extension, permitting the use of Distar and Proxar Supplementary Lenses. They are outstanding values for plate camera enthusiasts in all parts of the globe, seeking a finely finished camera that will handle practically every phase of photographic work.

*About one-half  
actual picture  
size Model A*



# Zeiss Ikon Cameras



## **IDEAL A and B** **For Plates and** **Filmpacks**

**Picture Size:** Model A, filmpack,  $2\frac{1}{4} \times 3\frac{1}{4}$ ; plates  $2\frac{1}{2} \times 3\frac{1}{2}$  (6.5x9cm). Model B, filmpacks or plates,  $3\frac{1}{2} \times 4\frac{3}{4}$ , (9x12cm).

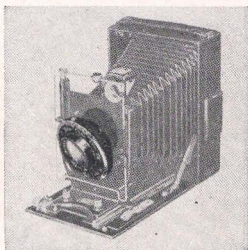
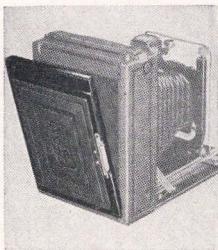
**Lens:** Zeiss Tessar F/4.5, Model A,  $4\frac{3}{4}$ "; Model B,  $5\frac{1}{4}$ " or 6".

**Shutter:** New Compur Self-Timing; Model A, 1 to 1/250 T & B; Model B, 1 to 1/200, T & B.

**Prices:** Model A, \$95.00. Model B with  $5\frac{1}{4}$ " Tessar, \$115.00; with 6" Tessar, \$125.00. Carrying cases included.

**Accessories** (extra): Model A, all 32mm filters, etc., listed on page 19; Model B, all 42mm filters, etc., listed on page 19.

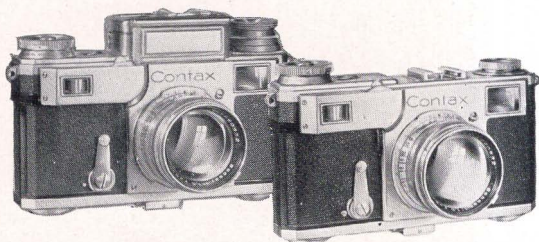
**E**VERY essential adjustment is embodied in these splendid precision cameras. Both have extremely long bellows extension permitting the use of Distar and Proxar Supplementary Lenses or Zeiss Convertible Protars. The front permits lateral and vertical adjustments. Bayonet lens mount for quick interchangeability on Model B. Clamped-on back a most convenient feature. Model B has swing-back. A camera for the serious worker.





# Leiss Ikon Cameras

## *Contax the Universal Camera*



**CONTAX III (with Built-in Exposure Meter) CONTAX II**

**C**ONTAX is the foremost 35 mm. camera. Accurate range finder focusing. 14 interchangeable lenses, apertures from F/1.5 to F/8; focal lengths from 28 mm. to 500 mm. Metal focal plane shutter. Automatic film transport. Daylight loading. Removable back permits access for cleaning and easy loading, and allows substitution of plate back for use of plates or cut film.

**CONTAX II:** This new model is finished in chromium. Range and view finders are combined in one opening. Winding knob on top of camera with shutter release in center of knob. Shutter speeds  $\frac{1}{2}$  to  $\frac{1}{1250}$  second. Delayed action release. Daylight loading, no rewinding.

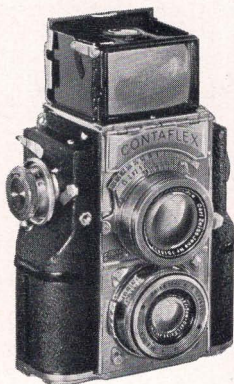
**CONTAX III** is the latest achievement and is the most complete 35 mm. miniature camera. Identical with the Contax II except for the addition of a highly sensitive built-in photoelectric exposure meter, providing within the camera means for instant and accurate control of exposure and focus—the twin factors in assuring good negatives.

**Special catalog and price list on request.**

# Leiss Ikon Cameras

## CONTAFLEX

### For 35 mm Rollfilm



**Picture Size:** 24 x 36 mm—  
36 in a load

**Shutter:** Metal focal plane  
like the Contax shutter  
11 speeds, up to  
1/1000 sec.

Six interchangeable lenses  
are available

**Price:** With Tessar F/2.8,  
50 mm \$321.00

With Sonnar F/2, 50  
mm \$348.00

With Sonnar F/1.5,  
50 mm \$435.00

Additional lenses alone:  
Triotar F/4, 85 mm  
\$85

Sonnar F/4, 135 mm  
\$108.00

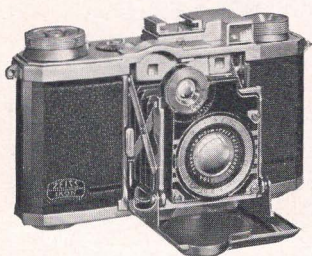
Sonnar F/2, 85 mm  
\$215

Eveready Case \$14

Plate Adapter \$25.00

**C**ONTAFLEX is a reflex camera of entirely novel design. It is the only reflex camera with built-in photoelectric exposure-meter. The meter is extremely sensitive permitting readings even in poorest light and only the light from the scene affects the meter due to built-in prisms and cover. The ground glass picture gives the actual field covered but in the enlarged size of 35x50 mm., hence greater ease and accuracy in focusing. Accuracy of focusing is further increased by the use of a finder lens of long focus. Front and back of finder hood form the Albada finder—perfect for fast work. Winding of shutter transports the film. Contaflex uses daylight loading spool or magazine, also cutfilm or plates. It has a detachable back and takes many accessories similar to Contax. All exposed metal parts of the camera are chromium plated.

# Leiss Ikon Cameras



## **SUPER NETTEL**

for

**35 mm Rollfilm**

**Picture Size:** 24x36 mm  
36 in a load

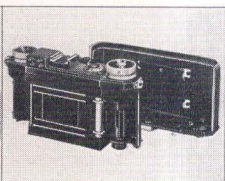
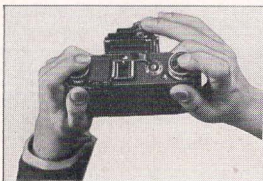
**Lens:** Tessar F/2.8 —  
50 mm

**Shutter:** Silent metal  
focal plane 9  
speeds, 1/5 to  
1/1000 sec. and B

**Price:** \$115.00. Eveready  
case \$8.00 extra.  
Soft leather pouch,  
\$3.50..

**A**N inexpensive miniature camera. Embodies many features of the Contax camera. The Super Nettel is compact, rigid and pleasing. The built-in optical view finder gives a bright picture. The built-in range finder with its patented wedge lens system permits automatic critical focusing. Turning the shutter winding knob automatically advances the film to next frame. No double exposures possible. Rewinding of film unnecessary. Automatic picture counter. Shoe on top of camera accommodates extra finders and other accessories for special type of work. Detachable back permits simple daylight loading with spool or cartridge. Also takes plate adapter. Covered with black grained leather with exposed metal parts chromium plated.

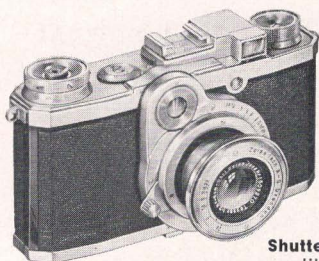
**Special catalog and price list on request.**





# *Leiss Ikon Cameras*

---



## **NETTAX**

for

**35 mm Rollfilm**

**Picture Size:**

**24 x 36 mm**

**36 in a Load**

**Shutter:** Metal focal plane  
like the Contax shutter.

**9 Speeds:** 1/5 to 1/1000 sec. and B.

**Lens:** Tessar F/2.8—50 mm.

**Price:** \$165.00. Eveready Case \$11.00.

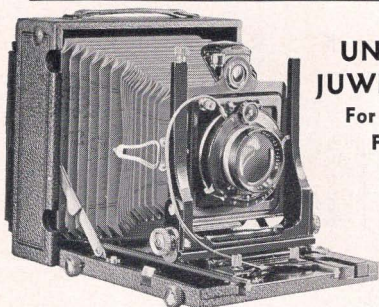
Extra interchangeable Carl Zeiss Triotar F/5.6,  
105 mm. \$120.00.

**T**HE Nettax was designed to meet the demand for a moderately priced precision miniature camera using 35 mm. film. It incorporates many of the well-known Contax features. Built-in superimposed-image range finder. Automatic film transport preventing double exposure. Daylight loading with regular film spool or Contax metal magazine. No rewinding necessary. Removable back for easy access in cleaning and loading. Automatic picture counter. Fast Zeiss Tessar F/2.8—50 mm. lens or interchangeable Zeiss Triotar F/5.6, 105 mm. Shoe on top of camera accommodates extra finders. Contameter and other accessories. Cased in a rigid metal housing, covered with black grained leather with all exposed metal parts chromium plated, the Nettax will give years of photographic enjoyment. Also takes plate adapter.

**Special folder and price list on request.**



# Leiss Ikon Cameras



## **UNIVERSAL JUWEL A and B** For Plates and Filmpacks

**Picture Size:** Model A,  $3\frac{1}{2} \times 4\frac{3}{4}$  (9x12cm). Model B,  $5 \times 7$ ".

**Lens:** Zeiss Tessar F/4.5; Model A, 6" or  $6\frac{1}{2}$ "; Model B,  $8\frac{1}{4}$ ".

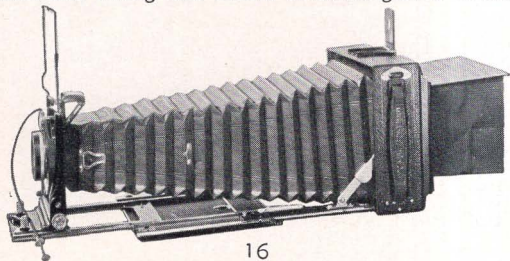
**Shutter:** Model A, New Compur Self-Timing, 1 to 1/200, T & B. Model B, Compound, 1 to 1/100, T & B.

**Bellows:** Model A, 16"; Model B, 19".

**Prices:** Model A, with 6" Tessar, \$224.00; with  $6\frac{1}{2}$ " Tessar, \$246.00. Model B, \$374.00. Leather case included.

**Accessories** (extra): Model A, 42 or 51mm filters, etc., listed on page 19; Model B, 60mm filters, etc., listed on page 19.

**T**HE Juwel A and B embody every essential feature for the advanced amateur, artist, scientist and professional photographer. They are jewels of precision, workmanship and performance. Both have revolving, clamp-on backs for convenient manipulation and triple bellows extension, and swing-back and tilting lens board. Interchangeable lenses.

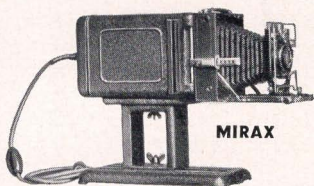


# *Leiss Ikon Cameras*

---

## **ZEISS IKON ENLARGERS**

**Additional information supplied on request**



**MIRAX**

Enlarging attachment for plate cameras  $6\frac{1}{2} \times 9$  cm. and  $9 \times 12$  cm., or rollfilm cameras  $2\frac{1}{4} \times 3\frac{1}{4}$ " and  $3\frac{1}{4} \times 4\frac{1}{4}$ ". Camera backs must be removable or hinged, **\$16.00.**



**MAGNIPHOT**

**Without Lens**

**\$50.00**

**With Novar F/6.3**

**\$65.00**

For 35 mm.  
Film Negative



**MIRAPHOT**

For negatives up to  $9 \times 12$  cm. ( $3\frac{1}{2} \times 4\frac{3}{4}$ "). Enlarges up to  $3\frac{1}{2}$  diameters.

With Novar F/6.3 lens, **\$60**  
With Zeiss Tessar F/4.5 lens, **\$70**



# Zeiss Ikon Cameras

## ACCESSORIES

**FILTERS** are usually used to bring out clouds and to cut through haze. They often add real pictorial value to the ordinary snapshot. Carl Zeiss and Zeiss Ikon filters are made of optical glass colored in the mass. The ultra-violet, blue, yellow, yellow-green, green, orange, red and infra-red offer highest correction with least increase in exposure. Sizes, colors and prices are listed on opposite page.



**SUNSHADES**, which should be used much more generally, often add surprisingly to the brilliance of the picture. ZEISS IKON sunshades may be used alone, or with filters or supplementary lenses. A necessary part of every photographer's equipment. Sizes and prices are listed on opposite page.

**SUPPLEMENTARY LENSES** greatly extend the range and usefulness of your camera. **PROXARS** decrease the focal length of the lens. On cameras of limited focal adjustment (Nettar, Ikonta, Super Ikonta, Contax, etc.), they permit pictures of objects closer than normal. On cameras of greater focal adjustment (Maximar, Ideal or Juwel), Proxars also produce wider angular coverage at all distances. **DISTARS** increase the focal length, and can be used only on cameras with double extension bellows (Maximar, Ideal or Juwel). They produce a larger image and approach the effect of a telephoto lens. **PORTRAIT** supplementary lenses are similar to Proxars, and, because less rigid correction is needed, are somewhat lower in price. Sizes and prices are listed on page 19.

# PRICES AND EXPOSURE FACTORS FOR ZEISS AND ZEISS IKON FILTERS ETC.

FILTER COLOR	Ultra-Violet	Light Yellow	Medium Yellow	Dark Yellow	Orange	Blue	Yellow Green	Green	Light Red	Medium Red	Dark Red	Black	Carl Zeiss Yellow		Proxar Distar	Bernotar	Sunshade	Filter Mount
FILTER DESIGNATION	G0	G1	G2	G3	G4	B40	GR55	GR50	R10	R15	R20	R30	L	D				
Approximate Factor* for PANCHROMATIC Film	D 1.3 M 1.3	D 1.4 M 1.2	D 1.6 M 1.4	D 2 M 1.5	D 2.3 M 1.5	D 2.0 M 3.0	D 2 M 1.5	D 3 M 2.5	D 6 M 4			Infra-red 1000	D 1.5 M 1.3	D 1.8 M 1.4		D 2 M 2		
Approximate Factor* for ORTHOCHROMATIC Film	D 1.5 M 1.5	D 2 M 1.6	D 3 M 1.6	D 5 M 2	D 10 M 3	D 1.3 M 1.5	D 4 M 3	D 7 M 5					D 3 M 1.8	D 4 M 1.9		D 2 M 2		
Millimeter Lens Diameter																		
25.5	\$3.25	\$3.25	\$3.25	\$3.25	\$4.50	\$4.50	\$4.50	\$4.50	\$4.50	\$4.50	\$4.50	\$4.50					\$3.00	\$3.00
27													\$5.00	\$5.00	\$5.00		2.00	2.00
28.5													5.00	5.00	5.00	\$10.00	2.00	2.00
32	4.00	4.00	4.00	4.00		4.50	4.50	4.50	4.50				6.00	6.00	6.00	12.00	2.00	2.50
37	4.00	4.00	4.00	4.00		4.50	4.50	4.50	4.50				6.00	6.00	6.00	13.00	2.25	2.50
40.5	4.50	4.50	4.50	4.50	5.50	5.50	5.50	5.50	5.50	5.50	5.50	7.00	...	...	...	....	3.50	...
42	4.00	4.00	4.00	4.00	4.50	4.50	4.50	4.50	4.50	4.50	4.50	6.00	6.00	6.00	6.00	16.00	2.40	3.00
51	6.00	6.00	6.00	6.00	6.50	6.50	6.50	6.50	6.50	6.50	6.50	9.00	7.50	7.50	7.50	20.00	3.25	4.50
* D means daylight * M means Mazda light																		
SUPER-IKONTA					IKOFLEX II				SUPER-NETTEL & NETTAX				CONTAX			CONTAFLEX		
A 32mm. C 37mm. B 37mm. D 37mm.					28.5mm.				25.5mm. 25.5 or 40.5mm screw-in screw-in				27—42—51mm. 40.5mm. screw-in			42—51mm. 40.5mm. screw-in		

# Contax

**THE UNIVERSAL  
CAMERA •**



**14  
INTERCHANGEABLE  
ZEISS LENSES**



**CARL ZEISS INC.  
485 Fifth Ave., New York  
728 S. Hill St., Los Angeles**