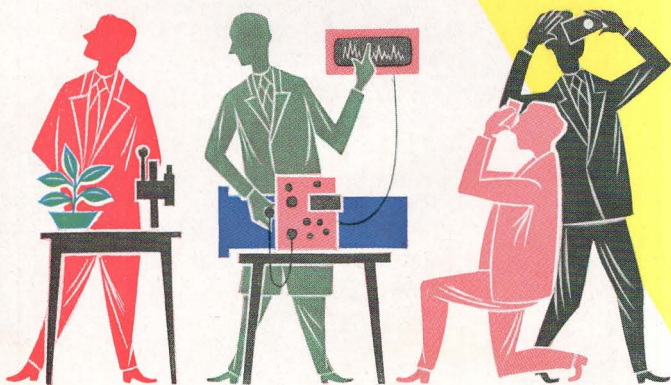
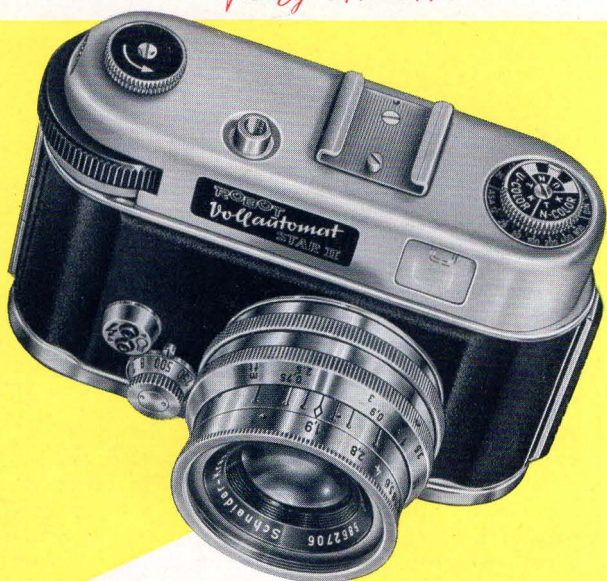


# ROBOT - STAR II

*fully automatic*



**A progressive step forward!**



**ROBOT STAR II** with spring motor for 18 exposures, with Xenon 40 mm, f/1,9.

**A progressive step forward is achieved with the ROBOT STAR II**

Attractive is its shape and appearance, handy is its operation and exceedingly multiple its field of application as the **ROBOT STAR II** is working fully automatically like all other **ROBOT** cameras. Fully automatic means self-acting film advance, shutter tensioning and counting exposures by an especially strong built-in spring motor. With one full winding of this spring motor the camera is ready for taking 18 exposures. The only thing to be done now, is to release.

**The remarkable features of the ROBOT STAR II are:**

Marvellously bright-luminous frame finder 1:1  
with image for standard lenses and  
Tele-Xenar  $f = 75$  mm.

Interchangeable lenses  
with focal lengths  $f = 30$  mm up to  
 $f = 150$  mm and apertures up to 1:1,9.

Ingenious colour dot system  
giving an immediate visual check on the  
depth of field range and infinity-near  
point focusing (hyperfocal distance).

Smooth camera top  
giving the **ROBOT STAR II** its fashion-  
able and streamlined form.

**ROBOT**-All-Metal-Rotor-Shutter  
with shutter speeds ranging from  $\frac{1}{4}$   
second up to  $\frac{1}{500}$  second and "B".

Twin-flash contacts  
for flash bulbs and electronic flash (with  
electronic flash shutter speeds up to  
 $\frac{1}{500}$  sec. can be used).



Built-in spring motor  
with tropic-proof antimagnetic and breakage-  
proof "Superflex" spring.

Film type dial  
for indicating the film used.

Rewind mechanism  
of simple operation.

**ROBOT** take-up cassette (NR)  
which can be used instead of the take-up  
spool enabling removing of partly exposed  
film from the camera at any time — even  
in daylight.

Use of standard 35 mm cartridges  
which will yield 55 exposures with the eco-  
nomic 24x24 mm size.

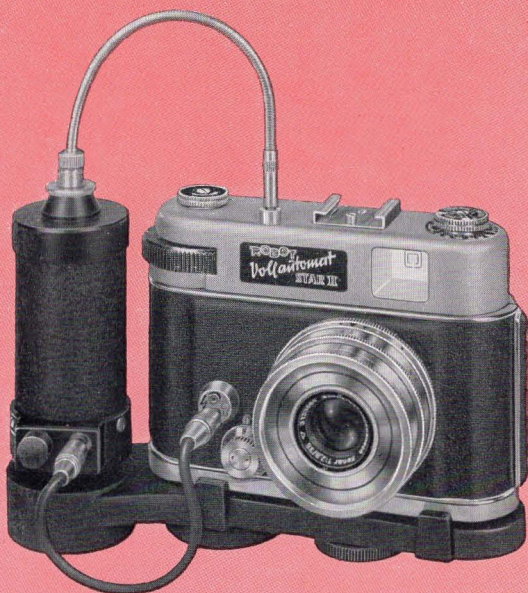
Besides the standard type of the **ROBOT** STAR II, there exists  
a further model with double spring motor for 50 exposures with  
one spring winding.

**ROBOT** STAR II  
with spring motor for  
50 exposures, with  
Xenar 38 mm, f/2,8.

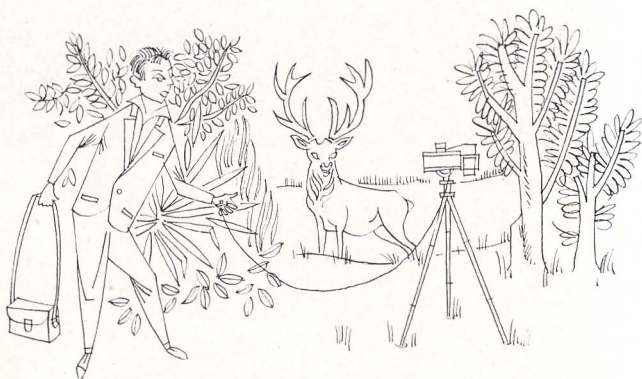


**ROBOT** STAR II with spring motor for 50 ex-  
posures, special type with black varnished top,  
with bayonet locking ring and guide plate for mounting  
in the special support.

Unprecedented possibilities are offered by the electromagnetic remote-series release for the **ROBOT** STAR II. This opens up an interesting field by taking "unnoticed" pictures, for example photos of animals taken on the hunting ground and others. The electromagnetic series release enables taking of up to 4 pictures a second with a single pressing of the release button. Distances of up to 30 m and more between camera and place of releasing can be overcome.



**ROBOT** STAR II mounted on ground plate with attached remote-series release. The ground plate is provided with  $\frac{3}{8}$ " tripod socket.





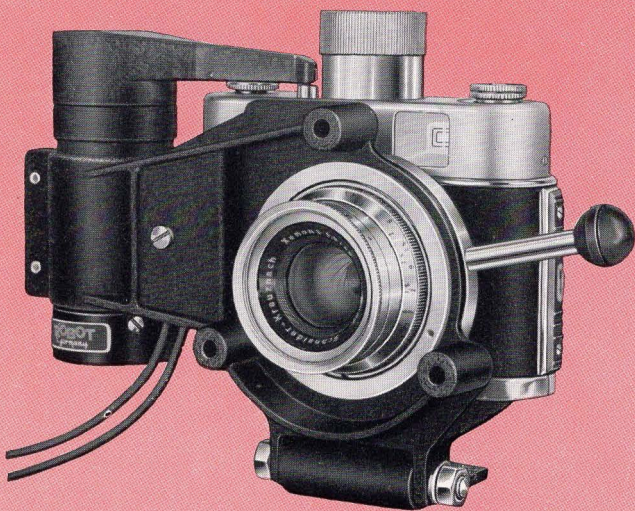
### A progressive step forward

is achieved with the **ROBOT** STAR II even in the field of technical and scientific photography and experts consider the **ROBOT** STAR II to be an especially suitable camera for photographic registration. For this purpose the **ROBOT** STAR II is equipped with bayonet locking ring and guide plate for mounting in a special support. The following types are available:

Installation camera with spring motor for 18 exposures

Installation camera with spring motor for 50 exposures

Installation camera with spring motor for 50 exposures  
special type with black varnished top without viewfinder, rewind  
and film type dial.



**ROBOT** STAR II with spring motor for 50 exposures  
mounted in the special support for stationary photography.

The special mounting support for stationary photography allows an exact optical adjustment and vibration-free mounting of the camera. The release is operated electromagnetically by remote-series release either by hand with release button or fully electric by timers.

## Interchangeable lenses



*Schneider-Xenar 38 mm,  $f/2.8$*   
a sharply focusing all-purpose standard lens.

*Schneider-Xenon 40 mm,  $f/1.9$*   
a high-efficiency lens with perfect definition for general use - especially suitable for photographs with poor light or for subjects demanding shortest exposure times.

Xenon 40 mm,  $f/1.9$



Xenagon 30 mm,  $f/3.5$

*Schneider-Xenagon 30 mm,  $f/3.5$*   
a wide-angle lens with excellent depth-of-field range - especially suitable for interior and architectural photography.



*Schneider-Tele-Xenar 75 mm,  $f/3.8$*   
a lens of outstanding performance with perfect definition for sports and animal photography as well as for portraiture and distant views.

*Schneider-Tele-Xenar 150 mm,  $f/4.5$*   
the very long focal length of this lens acts like a telescope and, if by magic, will bring the distant subject almost within your grasp. This lens gives slight vignetting at the corners.

Tele-Xenar 75 mm,  $f/3.8$





Macro-extension rings 5; 7,5; 10 and 20 mm.

## Camera Accessories

*Additional view-finder* for wide-angle lens Xenagon and Tele-Xenar  $f = 150$  mm; both with adjustable parallax compensation.

*Universal view-finder* for all focal lengths from  $f = 30$  mm up to  $f = 150$  mm, with adjustable parallax compensation.

*Supplementary lenses and extension rings* for close-up and macro-photography at distances up to 15 cm.



Universal viewfinder adjustable from  $f = 30$  to  $f = 150$  mm.

## ROBOT colour filters



Colour filters  
in 8 different colours.

*Polarisation filter*  
for eliminating of undesired reflections.

**ROBOT** tubular sunshade  
with thread mounting. It can be pushed back over the lens when not in use and fits in this position the everready case.

*Everready leather case* with detachable front part, velvet coated inside.



## ROBOT tubular sunshade

# ROBOT - STAR II

*fully automatic*



ROBOT-FOTO SM DÜSSELDORF

Germany

Equipment for use in science and research