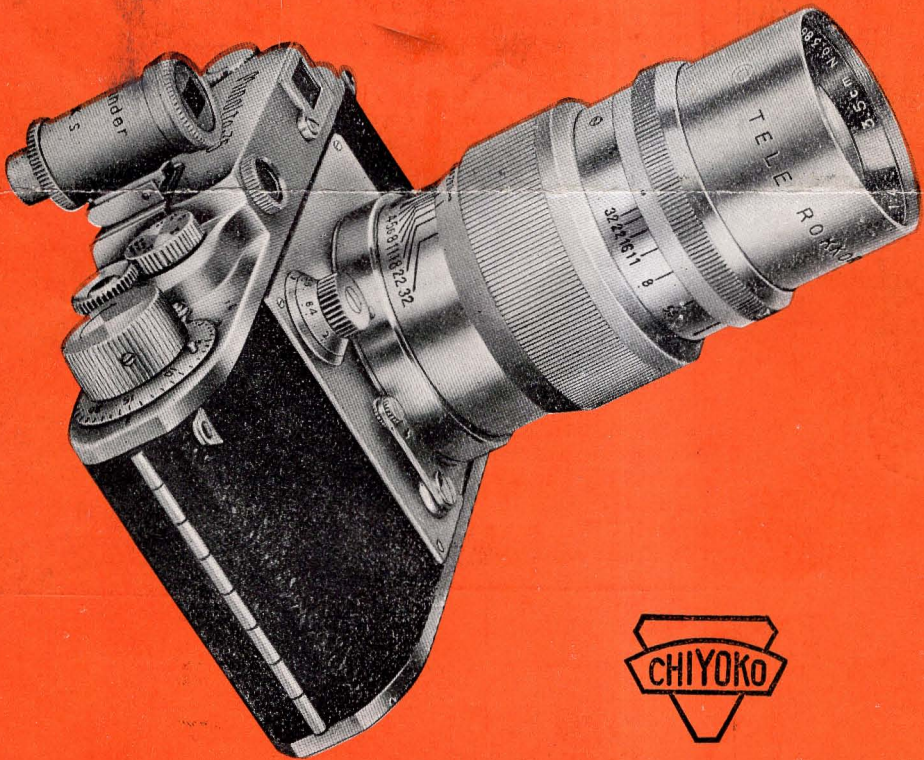


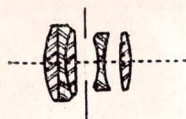
ROKKOR

Lenses

Interchangeable
for Minolta-35, Leica, etc.



Chiyoda Kogaku Seiko K. K.
Osaka, Japan.



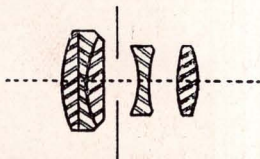
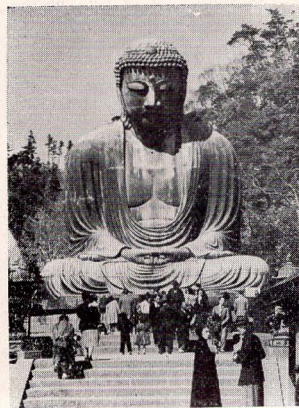
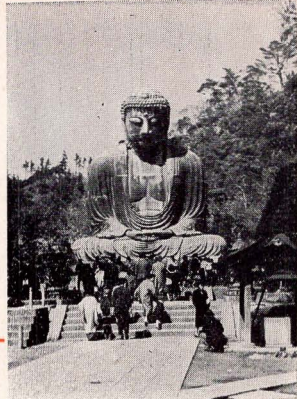
Standard

Super Rokkor Coated

F2.8 f = 45 mm.

Weight, 5 ounces (150grm.)

Length, 1.5 inches (3.8cm.)



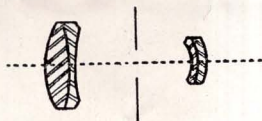
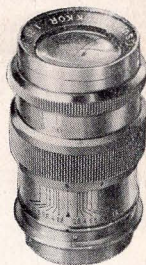
Super Rokkor Coated

F2.8 f = 85 mm.

Weight, 13 ounces (370grm.)

Length, 3 inches (7.6cm.)

Especially adaptable for close-up portraits. Excellent for distant scenes. Capacity of angle range is 26°. Image taken is 1.9 times that of standard lens.



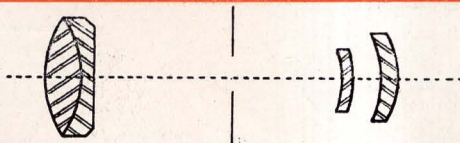
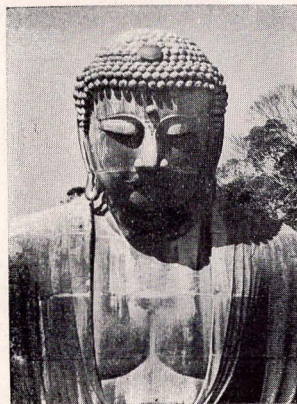
Tele Rokkor Coated

F5.6 f = 110 mm.

Weight, only 9.5ounces (270grm.)

Length, 3 inches (7.6cm.)

Relatively small size and light weight of this lens make it a special favorite. In universal demand. Capacity of angle range is 20°. Image taken is 2.4 times that of standard lens.



Tele Rokkor Coated

F4 f = 135 mm.

Weight, 18.5 ounces (520grm.)

Length, 4 inches (10 cm.)

Most suitable for distant subjects and scenes. Virtually takes your camera into the action for sport shots.

Capacity of angle range is 17°. Image taken is 3 times that of standard lens.

