




* THE ≡
* ROCHESTER
* CAMERA. ≡≡≡

... INSTRUCTIONS AND
... PRICE LIST.

ROCHESTER CAMERA MFG. CO.,

MANUFACTURERS.

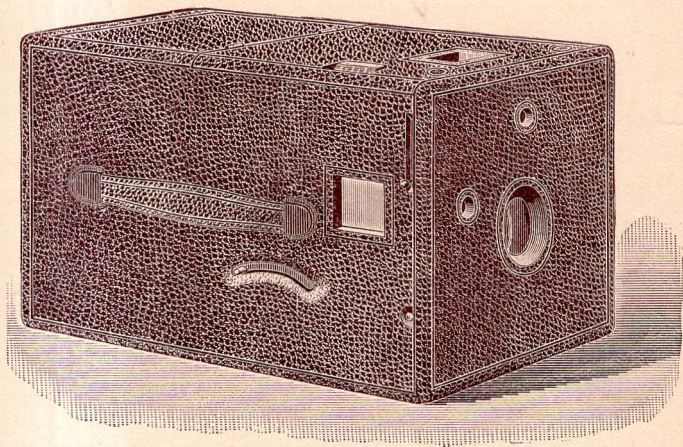
ROCHESTER, N. Y.



PUBLISHED BY
ROCHESTER CAMERA MFG. CO.,
ROCHESTER, N. Y.

January, 1892.

THE ROCHESTER



Takes the position as the leading Camera for all-around use.

After several years experience in the manufacture of photographic apparatus, and seeing the defects of other makes, we have endeavored to overcome them, and have succeeded beyond our expectations, as the ROCHESTER is conceded by all to be the best *hand camera* now in use.

Its Superior Points of Excellence are :

The easy manner of manipulation.

Its beautiful finish, both inside as well as outside.

Two large brilliant view finders that show the *exact* view.

The adjustable speed safety shutter, which is so arranged that the opening forms a symmetrical figure with the optical axis of the lens, and its action being merely audible enough to let one know that the exposure is made.

The focusing index being attached firmly to the movable part of camera—necessitating a correct focus when the index is set properly.

The rising front, for use in time exposures.

The easy adjustment of all the parts, experience not being necessary to attach any lens to the camera.

The easy manner of applying a roll holder when desired.

Its weight and size.

And above all, *a true, clear cut picture to the very edge of the plate.*

Instructions.

Load the plate holder and place it in position between ground glass screen and rigid frame of camera.

Draw the slide nearest the lens.

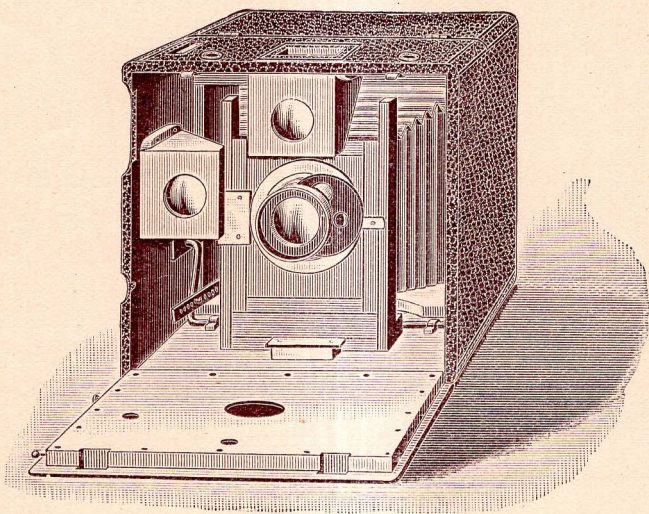
Set the shutter by the small wire lever at the right-hand front of camera and all is ready for the exposure.

Focus by moving the lever on the side of the camera until the focusing index on top indicates the number of feet you are from the principal object in the picture. Always remember that when making a general view, or one in which your principal object is at least 100 feet from you, to set the index at 100 feet.

Compose your picture by the aid of the viewfinder.

Press the button at the side of the camera and the picture is taken.

Replace the slide, reverse the holder, and you are ready to commence again.



Time Exposures. The camera should be placed on the tripod, as you will be unable to hold it still enough to avoid blurring the picture.

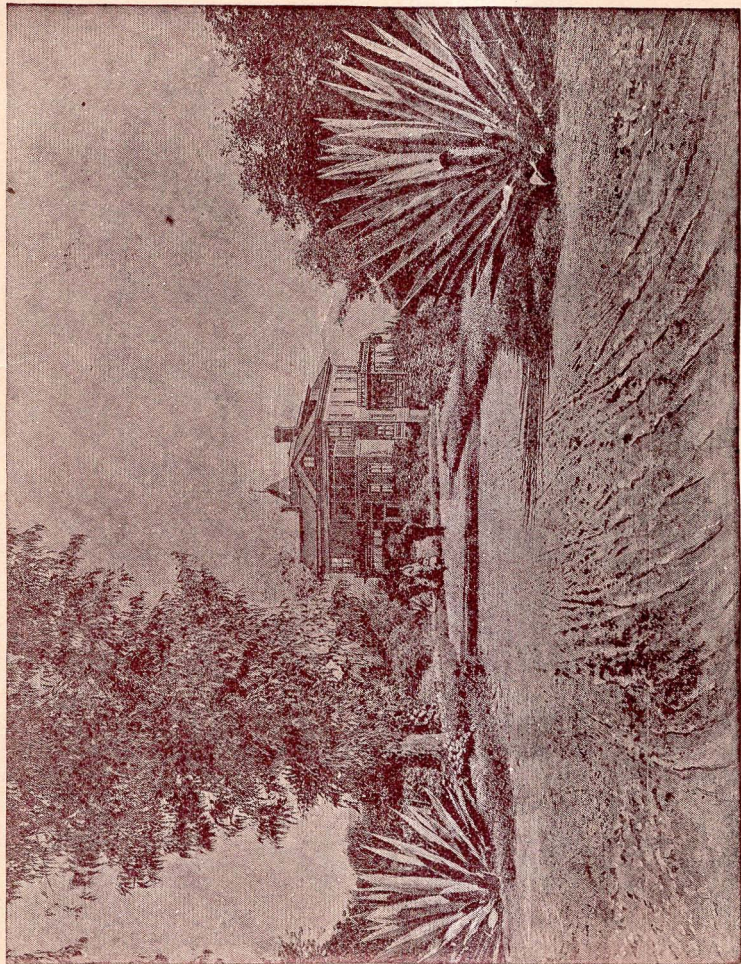
To Focus. Swing down the front, raise the lid of camera and slightly lift the ground glass screen, which will allow you to set it forward firmly against the back of camera. Swing down the back panel and

look through the opening upon the ground glass while you focus by moving the focusing lever, and use the cap for making the exposure.

The Speed of the Shutter is regulated by moving the wire lever away from or nearer to the center of its groove—nearer center for slow work and at the end for quickest. Every time an exposure is made move wire lever to opposite side of center.

To Open the Front. Two small round circles will be found on top, at front of camera, pressure on which allows the front to swing down. The same device is used for the lid, with one circle at back of camera.

To Use Roll Holder. Remove screen, place it at rear of camera, place roll holder with its face firmly against the back of camera, securing it by means of the catches, then remove the slide and you are ready for a day's outing, merely winding enough new film after each exposure for the next one and setting the shutter.



A SOUTHERN CALIFORNIA RESIDENCE. TAKEN WITH A ROCHESTER.

PRICE LIST.

Rochester Camera, covered with fine grain leather, including R. C. M. Co.'s Achromatic View Lens with Rotary Stops and one Double Holder, - - -	\$18.00
Fitted with a Gundlach Rapid Rectigraphic Lens, with <i>Rotary Stops</i> , - - - - -	35.00
Without Lens, - - - - -	16.00
Extra Holders, each, - - - - -	1.00
Roll Holder, loaded with 50 exposures, - - -	12.00

DEVELOPING OUTFIT FOR THE ROCHESTER CAMERA, 4x5.

Two Japanned Tin Developing Trays, - - -	\$.40
One Ruby Lantern, - - - - -	1.00
One box Developer, - - - - -	.50
One pound Hyposulphite Soda, - - - - -	.10
One 4-oz. Graduated Glass, - - - - -	.30
	\$ 2.30

PRINTING OUTFIT FOR BLUE PRINTS.

One Printing Frame, - - - - -	\$.40
One package Rochester Blue Paper, - - - - -	.20
One package Card Mounts, - - - - -	.25
One-half pint jar Rochester Paste, - - - - -	.20
	\$ 1.05

PRINTING OUTFIT FOR SILVER PRINTS.

One Printing Frame,	-	-	-	-	\$.40
One package Sensitized Albumen Paper,	-	-	-	-	.45
One package Card Mounts,	-	-	-	-	.25
One-half pint jar Rochester Paste,	-	-	-	-	.20
One 15-grain bottle Chloride Gold,	-	-	-	-	.75
One 2-oz. bottle Acetate Soda,	-	-	-	-	.10
					<hr/> \$ 2.15

PRINTING OUTFIT FOR ARISTOTYPE PAPER.

One Printing Frame,	-	-	-	-	\$.40
One package Aristotype Paper,	-	-	-	-	.30
One bottle Aristotype Toning Solution,	-	-	-	-	.50
One-half pint jar Rochester Paste,	-	-	-	-	.20
One package Card Mounts,	-	-	-	-	.25
					<hr/> \$ 1.65

ROCHESTER PRINTING FRAMES.

4 x 5,	40 cts.	5 x 7,	50 cts.	6½ x 8½,	60 cts.
4¼ x 6½,	45 cts.	5 x 8,	55 cts.	8 x 10,	75 cts.

ROCHESTER BLUE PAPER.

4 x 5.	20 cts.	5 x 7,	35 cts.	6½ x 8½,	60 cts.
4¼ x 6½,	30 cts.	5 x 8,	40 cts.	8 x 10,	75 cts.

DRY PLATES, ALL KINDS.

3¼ x 4¼,	.45	5 x 8,	1.25
4 x 5	.65	6½ x 8½,	1.65
4¼ x 6½,	.90	8 x 10,	2.40
5 x 7,	1.10		

Harvey's Hydrochinone Developer,	-	-	-	\$.50
Harvey's Eikonogen Developer,	-	-	-	.50
Harvey's Pyro-Potash Developer,	-	-	-	.50

NOTE. *To Amateurs.*—If you desire to finish your own pictures you will require of the above the Developing Outfit and any one of the Printing Outfits you may select.

