

\* THE \*  
HAWK-EYE

THE-FOLDING  
HAWK-EYE



\* THE \*  
COLUMBUS

\* THE \*  
400 \*

ILLUSTRATED·CATALOGVE  
OF

BLAIR'S  
HAND·CAMERAS

AND



FILMS



THE BLAIR CAMERA COMPANY,  
BOSTON. NEW YORK. CHICAGO.  
The European Blair Camera Co., L't'd.,  
LONDON.

 BLAIR'S HAND CAMERAS AND FILMS. 

---

THE BLAIR CAMERA COMPANY,  
WAREROOMS: { 471 Tremont Street, BOSTON.  
                  { 451 Broadway, NEW YORK.  
                  { 245 State Street, CHICAGO.

---

FACTORIES: BOSTON AND PAWTUCKET.

THE EUROPEAN BLAIR CAMERA CO., (LIMITED),  
Executive Offices, 9 Southampton Street,  
HIGH HOLBORN, W. C.,           -           -           LONDON, ENG.

---

CABLE AND TELEGRAPHIC ADDRESSES:  
HAWKMOTH, LONDON.                   BLAIRCAM, BOSTON.

---

THE BLAIR CAMERA CO., Publishers.

Copyright, July 1893.



A GLIMPSE OF THE FAIR. — PHOTOGRAPHED WITH A HAWK-EYE.

ILLUSTRATED CATALOGUE

....OF....

BLAIR'S . HAND . CAMERAS

....AND....

~ FILMS. ~



## Photography as a Pastime.

\*THE PERMANENCY OF PHOTOGRAPHY as a recreation is beyond dispute and the reason apparent when it is considered that no other pursuit so fascinating as to be followed as a pastime also affords a practical education in an Art-Science, and its tangible results in the shape of beautiful pictures and often invaluable souvenirs yield an amount of satisfaction far in excess of that experienced in the fleeting pleasures of mere games and sports.

The Blair Camera Company was among the first to provide apparatus and materials for the amateur and there are now in use "Tourographs" made by the Company in 1880 whose owners declare that they would not exchange them for any of the more modern styles of cameras.





A wise follower of Daguerre has said; "The difference between a good photographer and a poor one, is that a good photographer sometimes makes a poor picture, a poor photographer sometimes makes a good one." While the art of photography has progressed rapidly of late, there remains the likelihood that the old difference just referred to may still exist; but by an intelligent selection of camera and materials, and the exercise of a reasonable amount of care, the most inexperienced may readily become proficient in the art.

**The Blair Cameras** listed in the following pages, are all carefully inspected and tested before leaving the works. A carefully prepared guide book is furnished with each camera of every style, and the utmost care is exercised to insure its successful use, whether for pleasure or profit.

**Blair's Film in rolls**, stands as a successful rival to glass plates in beauty of results, while its advantages in freedom from breakage, in saving of weight and bulk, and in ease of adjustment for continuous exposures, are too apparent to be dwelt on here.





After nearly two years experience in its manufacture, under varying conditions, at all seasons of the year. we feel assured that our expectations have been fully realized, that our process of manufacture is such that Blair's Film may be at all times relied on, and that the users of roll-holder cameras need now have no fears that correctly-made exposures will fail to yield results.

There are no joints or seams in rolls of any length.

Blair's Film has a delicate, grain surface, resembling fine ground-glass, on the coated side, and can be allowed to remain for an indefinite period in the developer, the fixing bath, or the soaking solution, and never frill in the least.

Thus, the development need never be checked until the film is satisfactory in point of detail and density.

The ground-glass surface but slightly affects the transparency of the film and greatly enhances the printing qualities. The emulsion is extremely rapid.





**Blair's Film in cut sheets** is like the film in rolls, except that the supporting material is firmer and thicker.

These cut sheets are used in the same way as are glass plates, in the Feather-Weight holders (for films) and have the advantages of freedom from breakage, and a great saving in bulk and weight.

When only a few exposures are to be made before developing, the cut sheets are often preferable to rolls of film.







## The Hawk-Eye. ———— ≡

AUGUST, 1893.

\*THE HAWK-EYE still maintains its leading position in America, the makers having from time to time produced new models and improvements, until the 1891 model is conceded to be the best all-around camera in the world; and it is due to this that the Hawk-Eye bears the record of having had the largest sale of any combined plate and film camera ever placed on the market.

At the present time there may be said to be three distinct mediums for receiving in the camera the impression of the object or scene to be photographed, namely; the Glass Dry Plate, the Cut Film or Celluloid Plate, and the Celluloid Film in rolls for continuous exposures.

With the Hawk-Eye Camera, any or all of these mediums may be utilized to suit the convenience or disposition of the possessor. There is space within the camera for four double holders for glass plates,





or six double holders for cut films, or in the same space a roll holder carrying continuous film for taking 25, 50, or 100 pictures without re-loading may be substituted.

Duplicating roll holders or extra plate holders may at any time be purchased separately and applied to the Hawk-Eye without fitting.

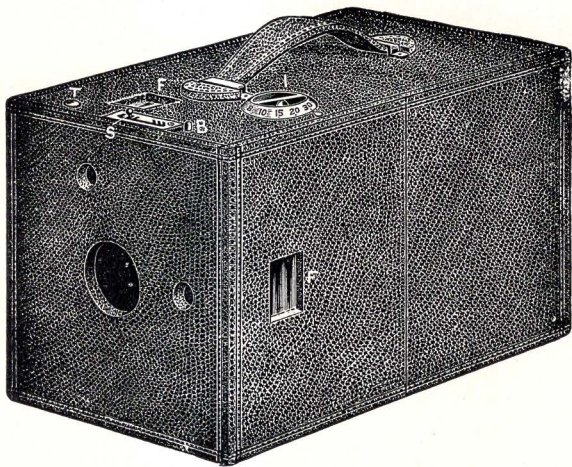
Both vertical and horizontal finders, interior ground-glass screen, and two tripod plates for time work are provided.

The No. 2 Hawk-Eye is so constructed that lenses of other make not listed herein may, if preferred, be fitted, provided they are of suitable size and focal length.

The working parts of the Hawk-Eye are simple in construction, positive in action, and not at all apt to get out of order.

A complete price list of all styles of Hawk-Eye cameras, extras and supplies will be found at the end of the booklet.





THE HAWK-EYE, MODEL OF 1891; SIZE OF PICTURES, 4 X 5



## As a Hand Camera.

\*THE illustration opposite shows the HAWK-EYE closed, ready for use, the holders containing the sensitized plates or films having been inserted in position.

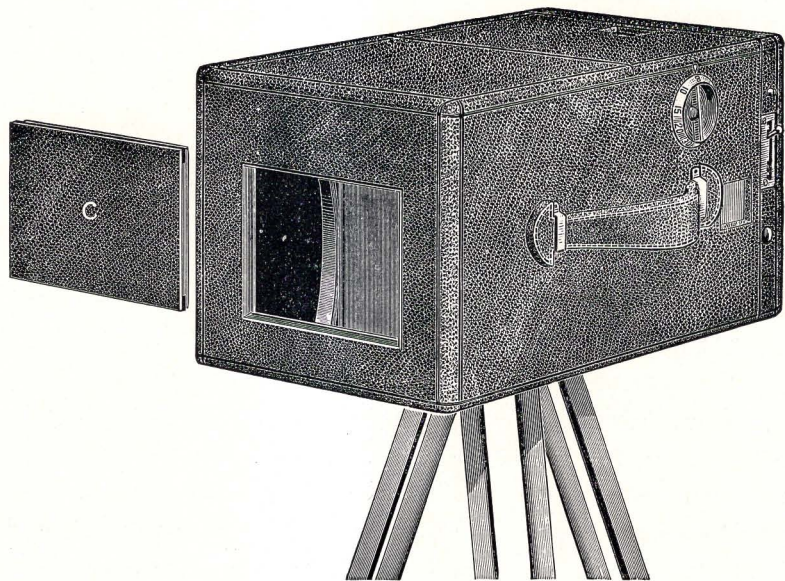
The Hawk-Eye is "focused," that is, set to take a sharp, clear picture at the required distance, by turning the index I, which is scaled for distances from 5 to 100 feet and beyond.

The object to be photographed is shown in miniature upon the finders F.F. one for upright, the other for horizontal pictures.

Simply pushing the spring S into one of the opposite notches sets the shutter to move slowly or quickly, as required.

A touch upon the button B opens the shutter for a fraction of a second, during which the impression of the picture is retained, a quick-acting lens being located behind the shutter.





THE HAWK-EYE AS A VIEW CAMERA WITH TRIPOD.



## As a View Camera.

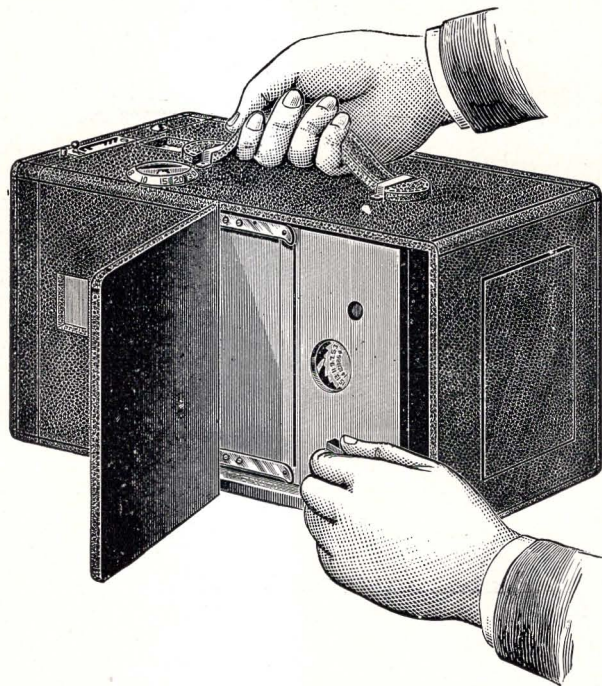
\*THE HAWK-EYE may be set up on a tripod or any convenient resting place and focused by eye on the ground-glass screen inside, for careful work, when one is in no hurry, instead of relying upon the outside index. Upon removing the back cover C, the view is seen in full size upon the screen, and the focus is adjusted by turning the index I, which is attached to a "rack and pinion."

For time exposures, the shutter is opened and closed by means of the time button T, obviating the use of a cap over the lens.



The price of the **Hawk-Eye** camera includes one double plate holder. The dry plates being of a standard size (4×5) may be obtained anywhere. The operation of developing the plates and finishing the pictures is extremely easy, and will be readily understood from directions which will be furnished.





THE HAWK-EYE AS A TOURIST'S CAMERA, LOADED FOR 100 PICTURES. — WINDING THE FILM.



## As an Automatic Roll-Holder Camera.

\*THE HAWK-EYE is also supplied with an improved roll-holder containing a roll of Blair's film for making 25, 50 or 100 exposures. without reloading.

The method of operating the camera is the same as before described, but instead of loading and unloading plate-holders with the separate dry plates, it is only required to wind a fresh portion of the roll of film into place for each picture, by turning the key of the roll-holder, as shown in the illustration opposite.

When the exposures have been made, the roll-holder may be slipped out of the camera and returned to us.

Any good photographer will develop the strip of film, finish one picture from each of the negatives, and return negatives and pictures with the roll-holder reloaded for fifty or one hundred more "shots."







Photography is thus placed within the reach of all, and as one has only to **turn the key, set the shutter, and press the button** for each of the pictures.

Or, the film may be developed, the pictures finished, and the roll-holder re-loaded by the amateur himself or herself, without sending to the factory.

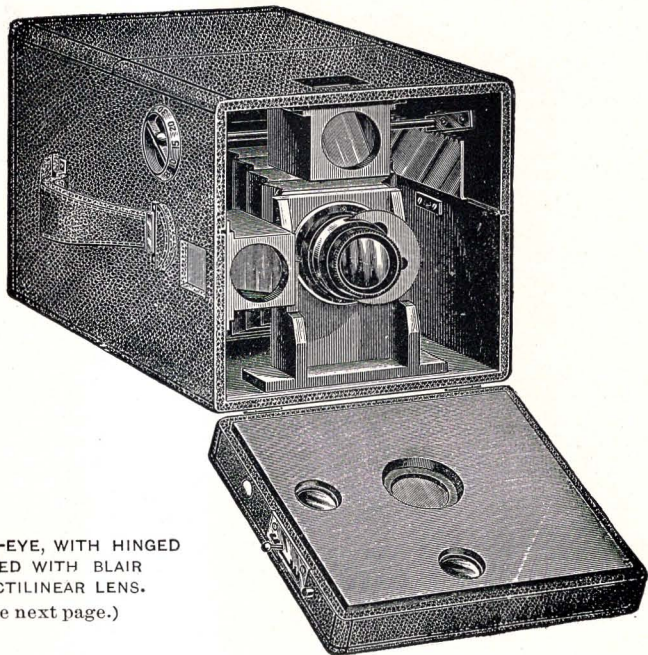
We furnish an outfit for such purpose, as per price list.

The exposed portion of the film may be at any time removed from the roll-holder in a dark room, without waiting until the entire roll has been used.

The price of the **Hawk-Eye** with roll-holder, also includes a double holder for the regular dry plates. Thus, with one camera, pictures may be taken with the glass dry plates, the film dry plates, or the roll of film as desired.

The new HAWK-EYE roll-holder is more easily emptied and filled than any other, and is fitted with an automatic tally. Every time the film is wound off for a fresh picture, a revolving numbered disc, seen through the top of the roll-holder, moves around one notch, thus showing at a glance how many exposures have been made, and how much film there is left.





THE NO. 2 HAWK-EYE, WITH HINGED  
FRONT, FITTED WITH BLAIR  
RAPID RECTILINEAR LENS.  
(See next page.)



## The No. 2 Hawk-Eye.

\***T**HE No. 2 HAWK-EYE is made expressly for double combination lenses, such as are listed under "extras" on the last page.

The price of the No. 2 Hawk-Eye without lens is the same as that of the No. 1 with the regular single combination lens.

No. 1 Hawk-Eyes may be changed over to take double lenses and fitted with hinged front. No extra charge is made for this fitting, other than to retain the single lens which is removed, provided the double lens is of 5 to 7 inch focus and not of unusual construction.

We also make to order a longer, 13 to 18 inch Hawk-Eye, designed for skilled photographers who at times desire to remove the front combination of their double lens, using the back as a long focus objective. Extra charge for such cameras, as per price list.





## The "Columbus."

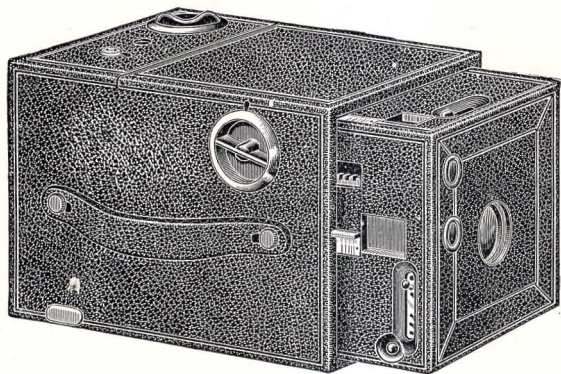
**Using Roll Film only.**

\*THE "Columbus" is the result of several years experiment, with a view to produce a camera of the most reliable and simple construction, which would enable the user to make the largest number of continuous picture negatives, with the least trouble, weight and bulk; one having the least fittings and working parts exposed to view, or obstruction, when carrying, yet quickly adjusted for use without unfolding.

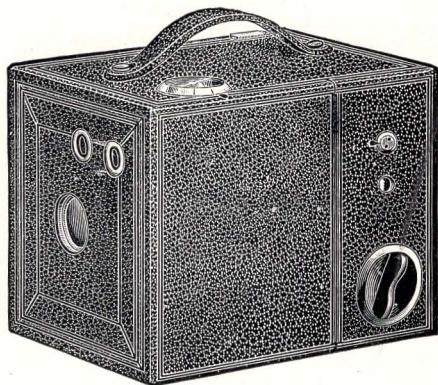
The illustrations and following particulars will show how well the purpose has been accomplished.

The measurements are  $5\frac{1}{2} \times 6\frac{1}{4} \times 8$  inches, weight  $3\frac{3}{4}$  lbs., and capacity 100  $4 \times 5$  pictures without reloading, though smaller rolls of film for 25 or 50 exposures may be used as well.





NO. 3 HAWK-EYE, TOP VIEW, OPENED FOR USE.



NO. 3 HAWK-EYE, SIDE VIEW, CLOSED.



It is fitted with Blair Rapid Rectilinear lens, oscillating diaphragm, and adjustable speed safety shutter with time exposure stop, of the same general style as in the regular 1891 model Hawk-Eye.

The workmanship and finish are of the best, with leather coverings and oxidized fittings.

It should be remembered that this camera, unlike the Hawk-Eye is constructed to use film in rolls only.

For prices of camera, extra films, etc., see complete list at the end.





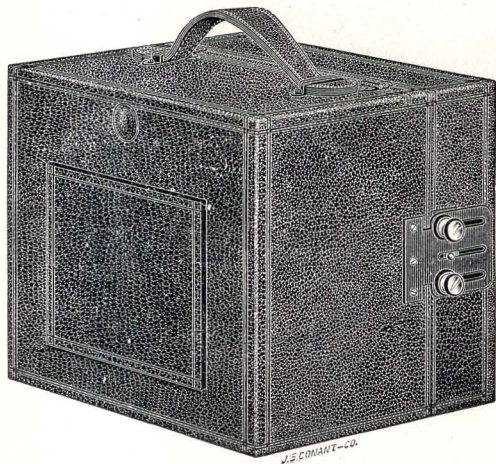
## The 5x7 Folding Hawk-Eye, No. 1.

**I**N the Folding Hawk-Eye the same elements of popularity found in the original model have been preserved, and in addition a Double Swing is provided; so that as well as being an extremely convenient and portable hand camera, it also affords, with the addition of a tripod, a very complete view outfit, having fine "rack and pinion" focal adjustment and ground-glass screen, and adapted to nearly every requirement.

Plate holders or roll holder are adjusted in exactly the same manner the "connecting frame" used in other cameras not being required.

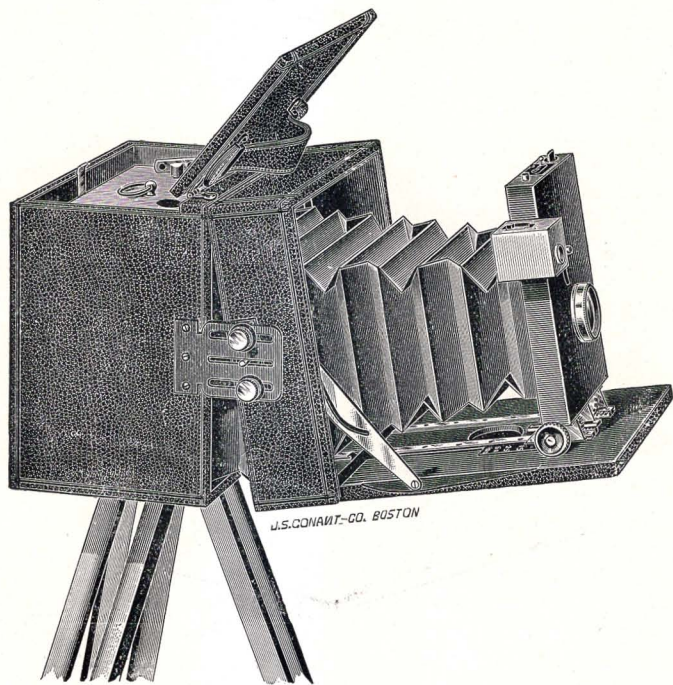
The shutter is of the same style as in the regular '91 model Hawk-Eye. It is the acme of simplicity; free from bothersome com-





SIZE 7 X 7 1/2 X 9 INCHES. TAKES 5 X 7 PICTURES. CARRIES 3 DOUBLE HOLDERS FOR GLASS PLATES  
OR CUT FILMS, OR AUTOMATIC TALLY ROLL HOLDER FOR 50 CONTINUOUS EXPOSURES.





THE FOLDING HAWK-EYE OPENED FOR USE, ON "COMPACT" TRIPOD,  
SHOWING OPERATION OF THE SWING



plications, and instantly adjustable in speed for "snap shots" or for time exposures of any duration.

The lens is a double achromatic Rapid Rectilinear, of excellent working capacity, and is provided with revolving diaphragm.

The Folding Hawk-Eyes are all leather covered, with oxidized fittings, and the inside woodwork is ebonized and polished.

Compact, simple, and thoroughly reliable, these cameras are especially desirable for tourists, and are warranted in every way.

The price list of cameras and supplies will be found at the back.





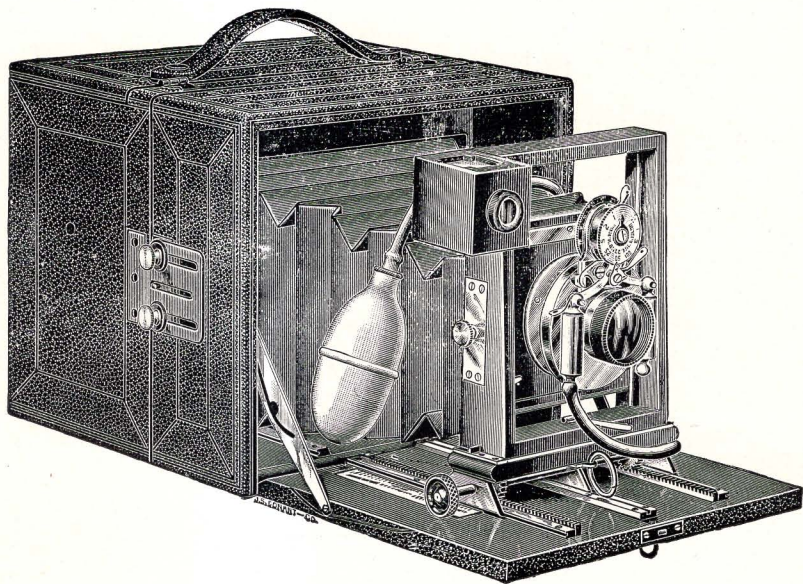
## The Folding Hawk-Eye, 5 x 7, No. 2.

With Taylor & Hobson or Kamaret Lens,  
and Bausch & Lomb Improved Shutter.

\*THE strength of above combination from a photographic standpoint will be readily recognized by those familiar with the beautiful finish, fine workmanship, and great utility of camera and shutter, as well as the superior quality of those celebrated lenses, which together make this a most desirable outfit for those who want the very best.

The construction of the No. 2 model is substantially the same as the No. 1, except the shutter mechanism, though the case is somewhat deeper so that the projecting lens and shutter may be enclosed within the camera when folded.





THE 5X7 FOLDING HAWK-EYE. NO. 2.



It has in addition to the double swing, a double sliding front, thus giving every adjustment which will ever be required. The case is covered with genuine morocco.

The lenses are guaranteed to give results equal to any known make of similar dimensions, and if in any way unsatisfactory, may be returned and exchanged.

The Bausch and Lomb Iris diaphragm shutter is the latest and most popular model, and may be set for automatic exposures of from 1-100 of a second to 3 seconds with great accuracy, as well as for longer exposures in the usual manner. The lightness of this shutter, and freedom from noise and jar in quick exposures, also commend it.

For further particulars and prices, see list at the end of booklet.



---

---



---

## The Folding Hawk-Eye, No. 3.

\*THIS is substantially the same as the No. 2 Folding Hawk-Eye without any lens or shutter, and is designed for those who prefer to use their own favorite patterns.

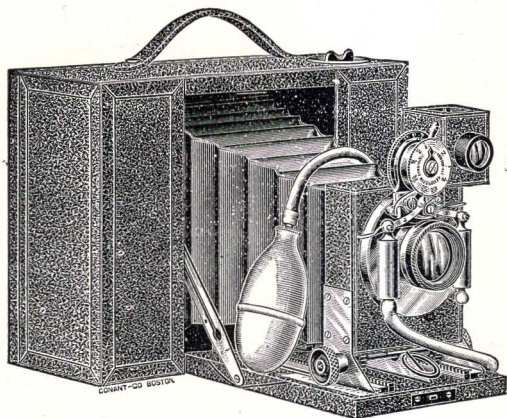
We can fit and adjust such lenses and shutters at a slight additional cost. See price list at the back.

## The Century Hawk-Eye, $6\frac{1}{2} \times 8\frac{1}{2}$ , Folding.

\*IN appearance, finish and operation, this camera is identical with the No. 2,  $5 \times 7$  Folding, except that the opening for holders and roll holder is at the side instead of the top.

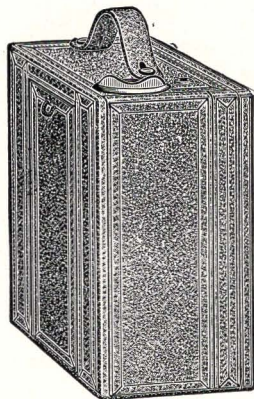
The Century Hawk-Eye is very light and portable considering its capacity, the shutter and lens mountings being of aluminium. It is furnished complete with Bausch and Lomb Shutter and Rapid Rectilinear Lens, or without any lens or shutter if preferred, as per price list.





UNFOLDED FOR USE.

SIZE, FOLDED, 6 1-2 X 3 1-2 X 8 1-2 INCHES. WEIGHT, 4 POUNDS. CAPACITY, 50 4 X 5 PICTURES,  
WITHOUT RELOADING. FITTED WITH BAUSCH & LOMB SHUTTER.



FOLDED FOR CARRYING.

---

---



“The 400.” 

\***T**HIS is positively the most compact 4×5 camera for roll film in existence, and the highest grade folding hand camera in the world. Wood cuts and type can convey but a poor idea of its appearance. Every exposed part inside and out when folded or unfolded is covered with the finest selected morocco leather, except the brass work which is hand finished and lacquered.

The second illustration shows the extreme convenience of the shape (which is quite like a book) when folded, and only 3½ in. thick, but the bellows capacity is nevertheless such that a lens of longer focus than usually employed with 4×5 cameras is fitted. It is an 8 inch Rapid Rectilinear and with large opening gives beautiful definition to the extreme edges of the field.

The shutter may be set for automatically timed exposures of from 1-100 of a second to 3 seconds with great accuracy, as well as for longer exposures in the usual manner. For prices, see last page.



---

---

❦

## Blair Rapid Rectilinear Lenses. ❦

\*THESE lenses are made complete in our own factory, the glass used being of the superior quality prepared in Jena, Germany, and universally recognized as unequalled for photographic purposes.



The success of this new departure in manufacturing high grade lenses has been such that our facilities in this department have been greatly enlarged.

The Blair Rapid Rectilinear Lens was designed especially for the Hawk-Eye and other hand cameras, to which it is particularly adapted, having great depth of focus, and with full opening covering the field to a remarkable degree.

---

---

❧

## Taylor & Hobson Lenses.

---

---

\*THE high quality and extreme rapidity of the Taylor and Hobson lenses make them especially desirable for use in the Hawk-Eye.

Messrs. Taylor and Hobson have by special arrangement agreed to furnish us their 6 inch focus "Detective" lenses, in matched cells without mounts at a price which enables us to offer them complete in a mount of our own manufacture with revolving diaphragm at a very moderate figure.

These lenses will also be furnished with the regular Taylor & Hobson mounts and Iris diaphragm, as per price list.





## Tripods.

THE PONY COMPACT. Very light, but strong and rigid. Suitable for  $4 \times 5$  and other light cameras.

THE COMPACT. Same as Pony Compact, but a little heavier. Designed for  $5 \times 7$  or  $6\frac{1}{2} \times 8\frac{1}{2}$  cameras.

THE SPECIAL COMPACT. Extra quality and finish, with metal tips and spreaders, and large (10 in.) head; for  $6\frac{1}{2} \times 8\frac{1}{2}$  and larger cameras. Finest and best tripod ever made.





## Price List of Hawk-Eye Cameras and Extras.

	As described on the following	Pages.	
Hawk-Eye, 4×5, plain oak finish, oxidized trimmings, with single lens,	8-16		\$15 00
“ “ leather covered “ “ - - - “			18 00
Extra double plate holders (Feather-Weight) 4×5, each,	- -		1 00
“ “ cut film “ “ - - - “			1 00
Roll Holders not loaded, 4×5, each	- - - -		7 00
No. 2 Hawk-Eye, plain oak finish, oxidized trimmings, without lens, -	17-18		15 00
“ “ leather covered, “ “ “ “ - “			18 00
“ “ plain oak finish, “ “ with Blair			
Rapid Rectilinear Lens, (also see page 32), - - - -	18,		27 00
No. 2 Hawk-Eye, leather covered, oxidized trimmings, with Blair			
Rapid Rectilinear Lens, - - - -	18,		30 00
No. 2 Hawk-Eye, plain oak finish, oxidized trimmings, with T. & H.			
Lens, (also see page 33), - - - -			30 00
No. 2 Hawk-Eye, leather covered, oxidized trimmings, T. & H. Lens, “			33 00
Roll Holder, extra Film Holders and Plate Holders for No. 2, same style and price as for regular Hawk-Eye.			
“ Columbus,” 4×5, using film in rolls only, loaded with 50 exposures,	19-21		25 00
Extra Roll Holder, with case for transportation, - - - -			7 50





Blair's film in rolls, for all of above cameras :—						Pages.		
4 in. width,	130 in. length,	25 exposures,	4 × 5,	-	-	5-6	\$ 1 65	
4 “	255 “	50 “	4 × 5,	-	-	“	3 30	
4 “	380 “	75 “	4 × 5,	-	-	“	5 00	
4 “	505 “	100 “	4 × 5,	-	-	“	6 60	
Blair's Film in cut sheets, for all of the above cameras, 4 × 5, per dozen,						7	80	
Allen & Rowell Plates, 4 × 5, per dozen,						-	65	
5 × 7 Folding Hawk-Eye, No. 1,						-	-	
“ “ “ “ 2,						22-25,	40 00	
“ “ “ “ 3,						26-28,	60 00	
“ “ “ “ 3,						29,	30 00	
Extra double plate holders (Feather-Weight) 5 × 7, each,						8-9,	1 25	
“ “ film “ “ “ “						“	1 25	
Roll Holder, not loaded, 5 × 7, each,						“	9 00	
Blair's Film in rolls, for all of the above cameras :—								
5 in. width,	180 in. length,	25 exposures,	5 × 7,	-	-	5-6	3 00	
5 “	355 “	50 “	5 × 7,	-	-	“	6 00	
Blair's Film in cut sheets, 5 × 7, per dozen,						-	7,	1 40
Allen & Rowell Plates, 5 × 7, per dozen,						-	-	1 10
Century Hawk Eye, 6½ × 8½,						-	29,	100 00
“ “ “ without lens or shutter,						-	“	45 00
Extra double plate holders, (Feather-Weight) 6½ × 8½,						8-9,	1 60	
“ film “ “ “ “						“	1 60	
Roll Holder, not loaded, 6½ × 8½, each,						“	12 00	





				Pages.	
Blair's Film in rolls, for the above camera :—					
8½ in. width,	167 in. length,	25 exposures,	8½ × 6½	5-6,	\$ 4 40
8½ “	330 “	50 “	8½ × 6½,	“	8 80
Blair's Film in cut sheets, for Century Hawk-Eye, 6½ × 8½, per doz.				7,	2 10
Allen & Rowell Plates, 6½ × 8½, per dozen,				- - - -	1 65
“The 400,” 4 × 5, loaded for 50 exposures,				- - - -	31, 60 00
Blair's Film in rolls, for Folding Kamaret, 4 × 5 :—					
5¼ in. width,	105 in. length,	25 exposures,	5 × 4,	5-6,	3 30
5¼ “	205 “	50 “	5 × 4,	“	6 60
Plate Attachment for “The 400,”				- - - -	10 00
Extra double plate holder (Feather-Weight) 4 × 5,				- - - -	8-9, 1 00
“ “ film “ “ 4 × 5,				- - - -	“ 1 00
Blair's Film in cut sheets, 4 × 5, per dozen,				- - - -	7, 80
Allen & Rowell Plates, 4 × 5, per dozen,				- - - -	65
Blair Rapid Rectilinear lens, 4 × 5,				- - - -	32, 12 00
“ “ “ “ 5 × 7,				- - - -	“ 20 00
Taylor & Hobson lenses in Blair mounts, 4 × 5,				- - - -	33, 15 00
“ “ “ “ 5 × 7,				- - - -	“ 25 00
Pony Compact Tripod, for 4 × 5 cameras,				- - - -	34, 3 50
The Compact “ “ 5 × 7 or 6½ × 8½ cameras,				- - - -	“ 4 00
“ Special Compact Tripod, for 6½ × 8½ and larger cameras,				- - - -	“ 6 00



L. BANTA & CO., PRINTERS, BOSTON, MASS.



J.S. DONANT - CO. BOSTON