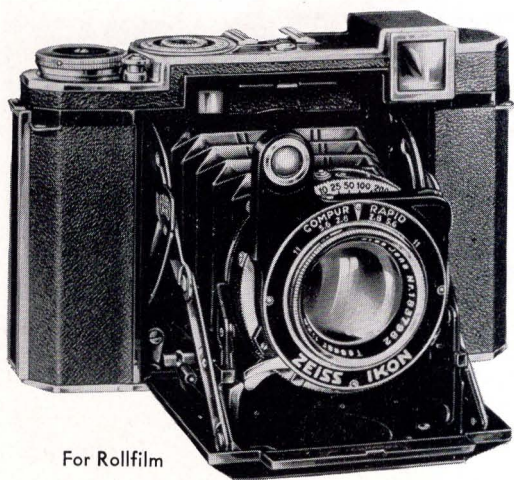




Super Ikonta B

2¼×2¼"





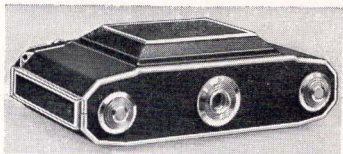
For Rollfilm

SUPER IKONTA B

2 1/4" x 2 1/4"

SUPREME among rollfilm cameras, the Super Ikonta B combines advantages formerly found in only the finest miniature cameras with a simplicity and ease of operation that will surprise you.

The lens is the Zeiss Tessar—recognized for its speed, sharp definition and the brilliance of its negatives. Its world-wide use for finest work is shown by lens data in the photographic annuals. The fastest Tessar, F/2.8, is used on this camera, which is 2 1/2 times faster than F/4.5, or 8 times faster than F/8. Focal length is 3 1/8", (8cm). The Compur Rapid shutter is accurate and dependable, with speeds from 1 to 1/400th second, time and bulb. The built-in self-timing device delays exposure about 10 seconds to permit self-portraiture at all speeds excepting 1/400th.



Bottom of camera showing bush for screwing to tripod. Bosses on each end permit camera to stand level on table for time exposure.

The outstanding feature is the optical view finder and the autofocus-ing range finder combined in *one large opening*. Only the latest model Contax cameras have this convenience. Composing the picture and focusing to



Moving milled wheel with one finger adjusts range-finder and brings lens to sharpest focus.



When double image (left) is superimposed (right) the object is in exact focus.

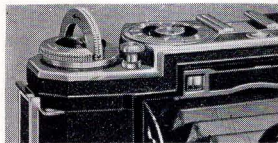


Figures on lens and shutter mounts, visible from above, show distance focused and depth of focus.

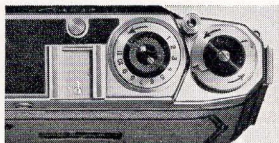
hairline accuracy thus becomes a single step—easy, simple and so rapid that even moving objects can be readily followed in the finder, kept constantly in focus even with the lens at full aperture, and snapped at just the proper instant.

The $2\frac{1}{4} \times 2\frac{1}{4}$ (6 x 6 cm) square negative is a good size for the album or for enlarging, and it makes composition easier. It also permits use of the camera in a most natural position, because there is no need to turn it for vertical pictures. The size is economical, too, making 11 negatives on standard 8-exposure $2\frac{1}{4} \times 3\frac{1}{4}$ rollfilm. This is the most popular of all rollfilm sizes, and fresh film is readily available everywhere in many emulsions.

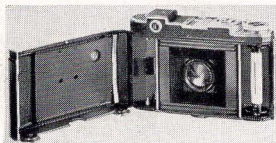
The Super Ikonta B is fast and accurate in operation. Pressing the release button opens the camera automatically, with the lens in position for immediate picture taking. Shutter speed and lens diaphragm settings are at the fingertips, and can be changed without turning the camera. The shutter release is conveniently located on top of the camera body assuring ease and perfect balance during operation. An automatic shutter check prevents accidental double exposure.



Winding key stops automatically when film is in position for next exposure. Convenient body shutter release.



Counter disc which automatically shows the number of exposures made.

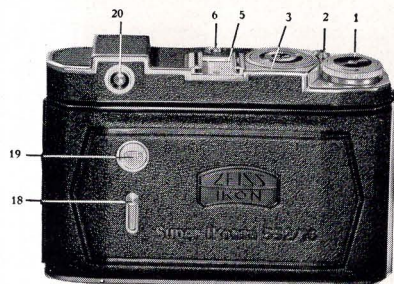
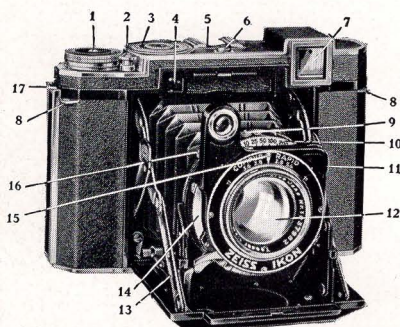


Showing hinged back for convenient loading of film into the camera.

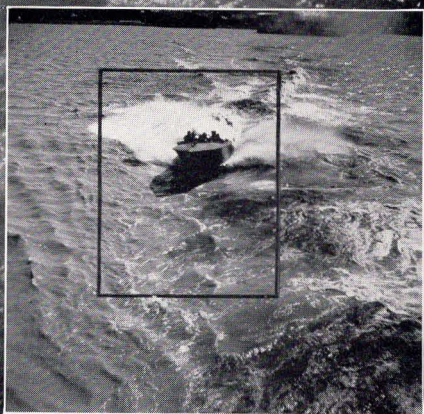
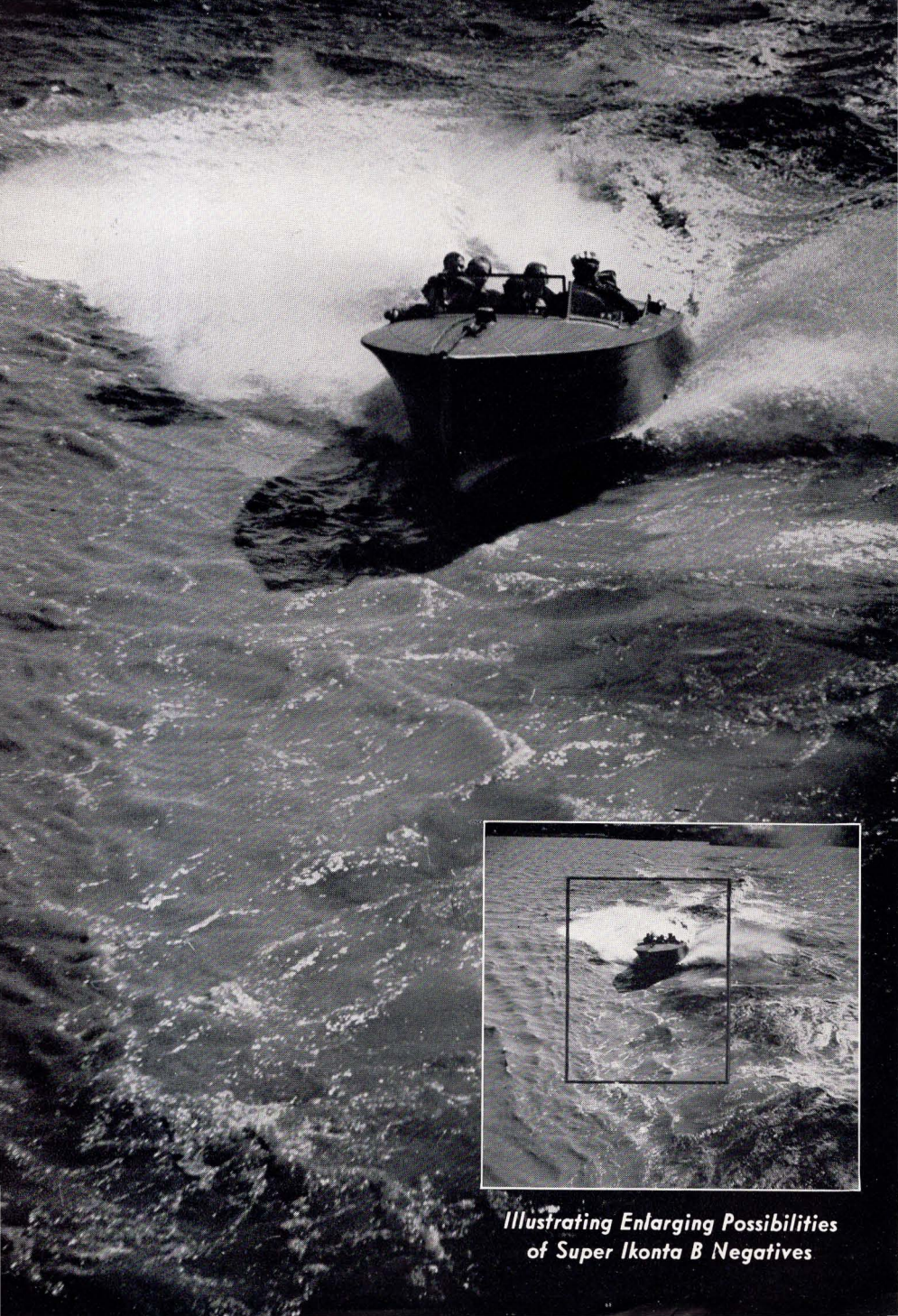
There is a large, clearly engraved exposure counter disc at the top of the camera. Film winding is controlled by a milled key that stops automatically when the film is in position for the next exposure—no need to refer to the red window after loading.

The camera is of sturdy, all-metal construction, finely finished in black leather and chromium. It is small and compact, 2" x 4" x 6", and weighs 34 oz. When closed it will fit the coat pocket, or it may be carried slung from the shoulder in its Eveready case. Open, it is a beautifully balanced precision instrument.

In design, construction and operation the Super Ikonta B is the foremost rollfilm camera. See it at your dealer's.

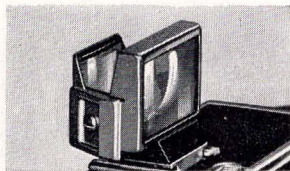


- | | |
|--|--|
| 1. Film winding key | 12. Lens |
| 2. Shutter release knob | 13. Struts holding camera front |
| 3. Picture counter | 14. Shutter speed scale |
| 4. Distance meter | 15. Indicator for distance scale |
| 5. Metal shoe for special finders | 16. Shutter tension lever |
| 6. Button for opening camera | 17. Catch holding camera back in place |
| 7. Window for the view finder-distance meter combination | 18. Slide for covering red observation window |
| 8. Eyelets for carrying strap | 19. Red observation window in camera back |
| 9. Button for delayed action release | 20. Eyepiece of distance meter-view finder combination |
| 10. Diaphragm ring | |
| 11. Focusing disc for distance meter and lens | |



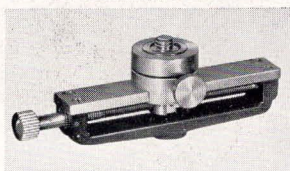
*Illustrating Enlarging Possibilities
of Super Ikonta B Negatives*

Accessories



THE ALBADA FINDER

is essential for action and sports, since it shows more of the view than will be included in the negative, with the picture portion marked by white lines, so moving objects may be seen in the finder before the shutter must be released to stop the action.



MICROMETER FOCUSING MOUNT

is a device for use between camera and tripod (or tripod tilting head). Makes possible extremely accurate focusing adjustment. Camera can be moved slowly forward or backward over a range of $2\frac{3}{8}$ "; it may also be rotated.



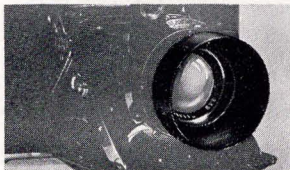
FILTERS

A full range of yellow, yellow-green, green, and red filters are available, made of optical glass colored in the mass, assuring sharp definition. Their spectroscopic qualities give greatest filter action with least increase in exposure.



SUPPLEMENTARY LENSES,

by shortening the focal length of the camera lens, allow taking pictures closer than the distance provided by the focusing mount. One for focusing sharply by rule and lens table from $4\frac{1}{2}'$ to $30''$, the other from $31''$ to $20''$. Use Contameter for still closer work.



SUNSHADES

which should be used more frequently than they are, often add surprising brilliance to the print. Zeiss Ikon Sunshades may be used alone or interchangeably with Zeiss Ikon Filters or Supplementary Lenses.



THE EVEREADY CASE

since it permits taking pictures without removing the camera from the case, is the most convenient method of protecting the camera from damage. They are high quality leather cases with shoulder straps, in brown finish.



Contameter, supplementary lenses and prisms in case.

Super Ikonta B with Contameter and supplementary lenses and prisms.



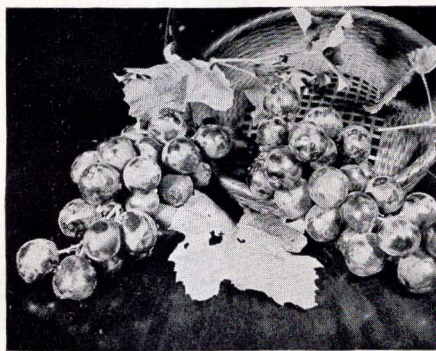
The Contameter

The Zeiss Ikon CONTAMETER provides a convenient means for making photographs of subjects close to the camera *without the bother of ground glass focusing*. Pictures of flowers, insects, specimens in the field or laboratory, miniature table-top sets, etc., can now be composed, focused

and photographed with almost the same outstanding speed and ease that marks ordinary picture-making with the Super Ikonta B and the Contax—and the same principle is used.

The Contameter is an accessory that combines a supplementary distance meter for focusing and a view-finder *in one large opening*. It is slipped into the shoe on top of the camera. Three supplementary lenses make it possible to focus quickly and accurately at approximately 19 inches, 12 inches or 7 inches distance from the camera lens—while at all times, *in the same opening*, the view that will be included in the picture is clearly seen. Color filters may also be used.

The set consists of the Contameter, three supplementary lenses, and three interchangeable prisms in cylindrical mounts. It is compact, easily attached and simple to use. Examine it at your dealer's.



Contameter photo by Dana Mitchell. No. 50 supplementary lens; Zeiss yellow filter; 4 sec. at F/22, at 19" distance. Illumination, two 50 watt bulbs

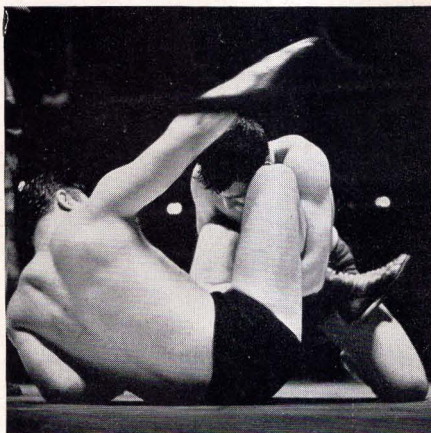


Photo by John Muller,
1/50 sec. at F/2.8.

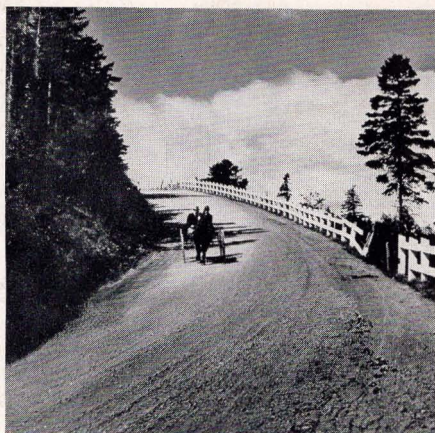


Photo by John C. Tredwell,
1/50 sec. at F/8; Zeiss yellow filter.

PRICES

With Carl Zeiss F/2.8 Tessar and Rapid Compur Shutter, no case.....	\$150.00
Zeiss Ikon ultra violet filter—GO 37 mm.....	4.00
Zeiss Ikon light yellow filter—G1 37 mm.....	4.00
Zeiss Ikon medium yellow filter—G2 37 mm.....	4.00
Zeiss Ikon dark yellow filter—G3 37 mm.....	4.00
Zeiss Ikon graduated yellow filter—37 mm.....	6.50
Zeiss Ikon yellow-green filter—GR55 (GR5) 37 mm.....	4.50
Zeiss Ikon green filter—GR50 (GR10) 37 mm.....	4.50
Zeiss Ikon blue filter—B40 (B5) 37 mm.....	4.50
Zeiss Ikon light red filter—R10 37 mm.....	4.50
Zeiss Bernotar Polarizing filter 37 mm.....	13.00
Intermediate ring adapting 42 mm. filters to 37 mm. lens mounts.....	.50
Micrometer focusing mount.....	25.00
Zeiss Sunshade 37 mm.....	2.25
Supplementary lens for 30" distance.....	4.00
Supplementary lens for 20" distance.....	4.00
Albada view finder.....	6.50
Prismatic waist level finder.....	11.00
Contameter, optical near focusing device.....	60.00
Eveready leather carrying case.....	9.00
Leather carrying case.....	4.50
Soft leather pouch.....	4.00
Holder for spectacle lens. (Special lens should be obtained from your local optician upon prescription).....	1.50

Carl Zeiss, Inc., 485 Fifth Ave., New York

728 So. Hill St., Los Angeles