



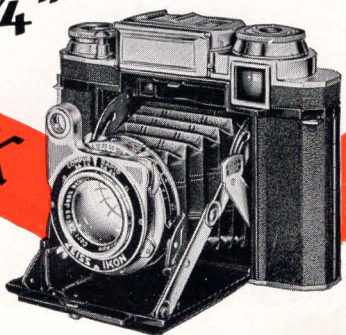
ZEISS IKON

# Super Ikonta B

2 1/4 x 2 1/4"

**Super Ikonta BX**

with built-in  
photo-electric  
exposure meter



*Zeiss Ikon*

# SUPER IKONTA $2\frac{1}{4} \times 2\frac{1}{4}$ "



Foremost among all roll-film cameras are the Super Ikonta B and BX. Based on an 87-year tradition of fine camera making, they are indeed masterpieces of camera construction. Optically as well as mechanically! **THE ZEISS TESSAR LENS** of f/2.8 aperture is universally recognized as unrivaled for advanced work. It is fully corrected for color as well as black-and-white photography. Its speed of f/2.8 is  $2\frac{1}{2}$  times faster than f/4.5 and 8 times faster than f/8.

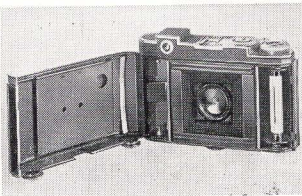
**THE OPTICAL RANGE-FINDER** is securely housed in the camera body. It is coupled with the lens and it has a long base which contributes to the accuracy. Its main part is a prism of solid glass which assures permanent alignment as against the less expensive but unreliable mirror construction employed in cheaper cameras. The critical focusing possible



*When double image (left) is superimposed (right) the lens is accurately focused on the subject.*



*Figures on lens and shutter mounts, visible from above, show distance focused and depth of field.*



*Hinged back opens easily. Loading is very simple with B-2 or 120 roll-film.*

with the range-finder permits you to utilize fully all the splendid optical properties of the Zeiss Tessar. You may focus and expose with the lens wide open and thereby use all the speed of the lens. A real boon in sport and candid photography. Perfect for obtaining high quality color transparencies.

**THE VIEW-FINDER** and the range-finder are combined. You look through one eyepiece for composing the picture and focusing. No need of shifting the camera or your eye. Easy, simple, fast.

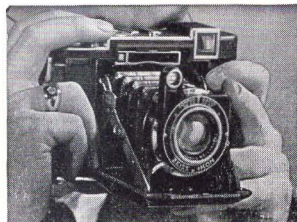
**THE COMPUR RAPID SHUTTER** — with speeds from 1 to 1/400 second, also bulb — is accurate and dependable. A built-in self-timing device delays exposure about ten seconds to permit self-portraiture at speeds up to 1/200.

**THE OPERATION** of both models is fast and accurate. Loading is as simple as with any roll-film camera. Film winding by means of the milled key stops automatically when the film is in position for the next exposure — no need to refer to the red window. *The automatic lock to prevent accidental double exposure and blanks* is a most welcome feature. Pressure of a button snaps either model open and in position for immediate picture taking. The shutter speed and lens diaphragm settings are visible from above and at your finger-tips. They can be set without turning the camera. The shutter release is located on top of the camera body to assure perfect ease and steadiness of operation. See illustration on title page. Also a picture counter is located on top of the camera.

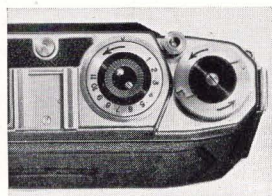
**THE SQUARE FORMAT**  $2\frac{1}{4}'' \times 2\frac{1}{4}''$  of the negative is practical for the album and for enlarging. It makes composition easy, and the camera



*Winding key stops automatically when film is in position; shutter release is conveniently placed.*



*One-finger adjustment of milled wheel automatically focuses lens as range-finder images are superimposed.*

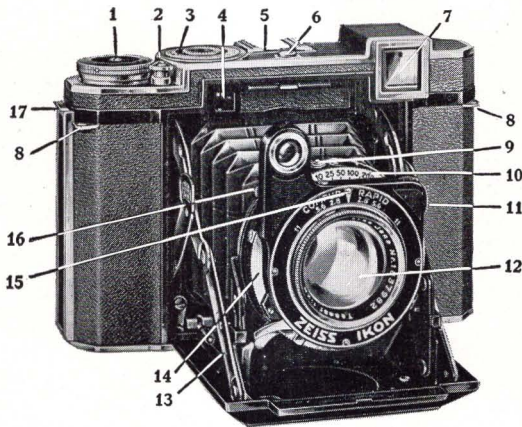


*Counter disc of the B which shows automatically the number of exposures made.*

may always be used in its upright and most convenient position. There is no need to turn it for a vertical picture.

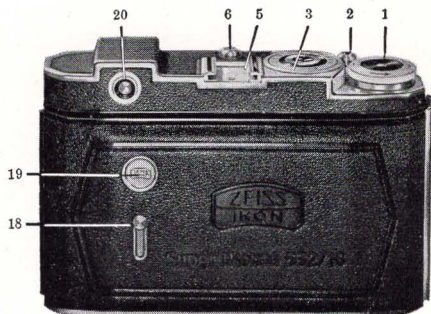
**FILM.** Super B makes 11 negatives and the BX 12 negatives on standard 120 or B-2 roll-film. This is the most popular of all roll-film sizes and fresh film is readily available everywhere in a wide variety of emulsions, black-and-white and color.

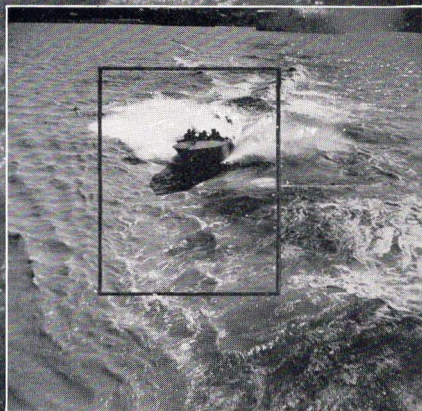
**THE BODY** of both cameras is of sturdy all-metal construction, attractively finished in black leather and chromium. Small, compact and light. It has a tripod screw at bottom. A shoe on top permits the use of accessories. Lens mounts take slip-on filters, which may be left on when the camera is closed. Furnished with Eveready Carrying Case of brown top-grain cowhide leather with shoulder strap.



1. Film winding key
2. Shutter release button
3. Picture counter
4. Part of distance meter
5. Metal shoe for special finders
6. Button for opening camera
7. Window for the viewfinder-distance meter combination
8. Eyelets for carrying strap
9. Button for delayed action release
10. Shutter speed indicator ring
11. Focusing disc for distance meter and lens

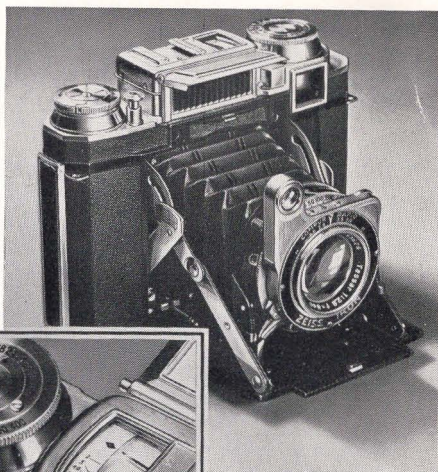
12. Lens
13. Struts holding camera front
14. Shutter speed indicator ring
15. Indicator for distance scale
16. Shutter cocking lever
17. Back lock holding camera back
18. Slide for covering red observation window
19. Red observation window in camera back
20. Eyepiece of distance meter-view finder combination





*Illustrating Enlarging Possibilities  
of Super Ikonta B Negatives*

## The Super Ikonta BX with Built-in Exposure Meter



With the high speeds now used in candid photography and the sensitive emulsions of black-and-white as well as color film, the use of a photo-electric exposure meter is



nearly imperative. What is more practical than an exposure meter built right into the camera? Always at hand! A complete photographic outfit in one unit.

With the meter pointed at the scene, shutter speed and diaphragm settings are read directly off the dials on the control knob, where they can be referred to later, if desired.

The semi-automatic loading feature of the Super BX sets the picture counter and does not require use of the red window for the first exposure.



*Counter of BX. Pressing a button after closing back sets counter in position.*

*In design, construction and operation Super Ikonta B and BX are the most advanced roll-film cameras. See them and be convinced.*