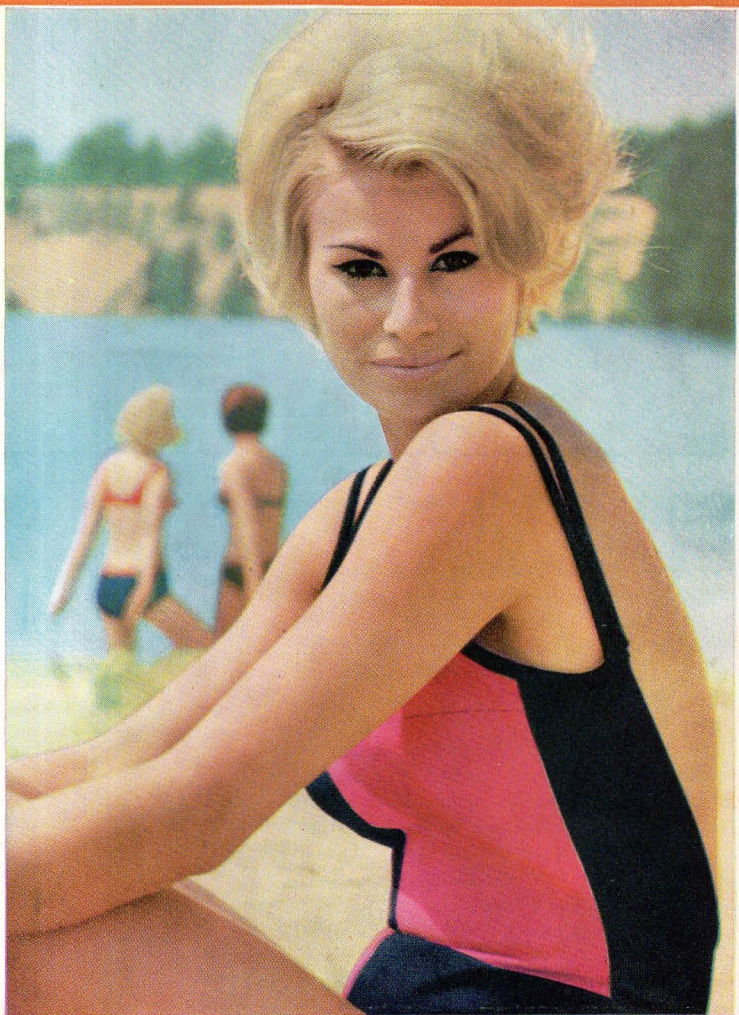


24 mm x 36 mm



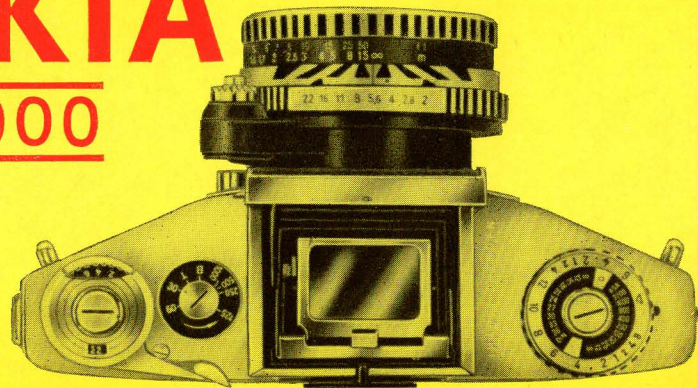
EXAKTA

VX 1000



EXAKTA

VX 1000



EXAKTA VX 1000 24 mm x 36 mm

- Simple to operate.
- Subject selected and focused by means of the brilliant, magnified reflex image in the interchangeable viewfinder: choice of Finder Hood with upright image, Penta Prism with upright and laterally-correct image, and Lens Magnifier. To achieve a degree of accuracy greater than that obtained with the ground-glass screen, the Fresnel Lens with Microprism may be used. This screen consists of a Microprism centre, surrounded by the brilliant, evenly illuminated matt surface, and is suitable for Finder Hood, Penta Prism, and Lens Magnifier. Single-lens reflex focusing, ensuring absolute freedom from parallax and uniformity between finder image and final picture.
- Instant return mirror: after every exposure the mirror returns to its reflex position, so making the viewfinder image permanently visible except during the actual exposure. When the shutter has been released, a red warning indicator is visible in the viewfinder, reminding the user to cock the shutter and wind the film again.
- Interchangeable lenses with fully-automatic spring or pressure diaphragms. Special-purpose lenses ranging from the super-wide-angle with its focal length of 20 mm right up to catoptric (mirror) lenses 1000 mm; lenses from 20 mm to 300 mm available with fully automatic diaphragms. World-famous quick-change bayonet lens mounts.
- Focal-plane shutter with rapid-wind lever giving shutter speeds from $\frac{1}{1000}$ sec. to 12 seconds, and B- and T-settings for brief and long exposure times. Delayed-action release operates on speeds from $\frac{1}{1000}$ sec. to 6 seconds. Body shutter release with cable release socket. Release lock. Shutter tensioning

and film advance are coupled, eliminating unintentional double exposures and blank frames. Three flash synchro-contacts (FP, F and X) for flashbulbs and electronic flash units.

- Ever-reliable film advance mechanism, either winding the film on to the take-up spool and then rewinding by crank into the original cassette, or from one cassette to another. Hinged camera back with film pressure plate. Frame counter and film-type reminder, plus correct-advance indicator. Film cutting knife.
- Smartly-styled and easy-to-hold body with durable covering. Dimensions of body $3\frac{7}{8} \times 6 \times 2$ inches (93 mm \times 153 mm \times 49 mm), weight without lens $24\frac{1}{2}$ oz.
- Extensive range of accessories to cater for even the most unusual assignments.

The camera
that has
everything,
can do anything

In photography, techniques and requirements are continually changing, and a single camera may have to perform one job one day and a totally different one on the next. If you want to keep abreast of every new approach, then you need a highly developed miniature reflex like the EXAKTA VX 1000, the camera that has everything and can do anything. The superiority of this obsolescence-proof camera is based primarily on the complete interchangeability of its lenses, viewfinder systems, focusing screens and accessories, which allow it to be adapted instantly to suit every personal requirement.



Special-purpose lenses for the EXAKTA VX 1000

Designation aperture, and focal length in mm	Type of dia- phragm ¹	Angle of view (nominal)	Front-mount thread for screw- in lens attachm.
Flektogon f4/20	FAD	93°	M 77 \times 0.75
Lyditih f3.5/30	PSD	71°	M 49 \times 0.75
Flektogon f2.8/35 ³	FAD	62°	M 49 \times 0.75
B f1.5/75 from Jena	PSD	32°	M 58 \times 0.75
Orestor f2.8/100	CSD	25°	M 49 \times 0.75
Orestor f2.8/135	PSD	18°	M 55 \times 0.75
S f4/135 ⁴ from Jena	FAD	18.5°	M 49 \times 0.75
S f2.8/180 from Jena	FAD	14°	M 86 \times 1
Orestegor f4/200	PSD	12°	M 58 \times 0.75
Orestegor f4/300	PSD	8°	M 95 \times 1
S f4 300 from Jena	FAD	8°	M 86 \times 1
Orestegor f5.6/500	PSD	5°	M 118 \times 1
Catoptric (mirror) lens f4/500 from Jena	No dia- phragm	5°	Built-in filter turret
Catoptric (mirror) lens f5.6/1000 from Jena	No dia- phragm	2.5°	Built-in filter turret

- ¹ CSD = Click-stop diaphragm
PSD = Pre-set diaphragm
PD = Fully-automatic pressure diaphragm
FAD = Fully-automatic spring diaphragm

² With automatic depth-of-field indicators

³ With extra-long helical focusing mount for focusing down to 7 inches without close-up accessories

⁴ With extra-long focusing mount for focusing down to 40 inches without close-up accessories

The EXAKTA VX 1000 is supplied with Finder Hood or Penta Prism (both available with either ground-glass screen or Fresnel Lens) and one of the following three lenses:

Designation, aperture, and focal length in mm	Type of dia- phragm ¹	Angle of view (nominal)	Front-mount thread for screw- in lens attachm.
Dominplan f2.8/50	PD	45°	M 49 \times 0.75
T f2.8/50 from Jena	FAD	45°	M 49 \times 0.75
Pancolar f2/50 ²	FAD	45°	M 49 \times 0.75

Accessories

Leather ever-ready case

Lens Hoods with the following screw-in threads:

M 35.5×0.5, M 40.5×0.5 and M 49×0.75 mm

Giant Release Button for enlarging the contact area of the shutter release

Polarizing Filters with screw-in thread sizes M 35.5×0.5, M 40.5×0.5 and M 49×0.75 mm

Finder Hood

Penta Prism

Eye-piece Cup for Penta Prism

Accessory Shoe (for attaching to Penta Prism)

Fresnel Lens focusing screen for Finder Hood, Penta Prism and Lens Magnifier

Two-in-One Ring for close-up work

Set of Bayonet Rings and Extension Tubes (5 mm, 15 mm, and 30 mm) for close-ups, see Figs. 1 and 2

Autocouple Extension Release for taking close-ups with fully-automatic lenses, see Figs. 1, 2, and 3

Miniature Bellows Attachment, for lens extensions from 35 mm to 125 mm, see Fig. 3

Ihagee "Vielzweck" (Multi-Purpose) Equipment:

Swing Angle Attachment with focusing bench for convenient close-up focusing when using Bayonet Rings, Extension Tubes and tripod, see Fig. 2

Large Bellows Attachment with focusing bench, extension adjustable from 35 mm to 220 mm, see Fig. 4

Transparency Copying Attachment for Bellows Attachment, for optical copying, see Fig. 5

Copying Stand and Repro Unit for document copying and all close-up photography (camera is attached directly to Copying Stand, but used with Bellows Attachment on Repro Unit), see Fig. 6 (Repro Unit)

Lighting Equipment for Copying Stand and Repro Unit, see Fig. 6

Microscope Adaptor for connecting camera to a microscope, see Fig. 7

Ihagee Macro-Micro Photometer for close-up photography and photomicrography, see Fig. 7

Ihagee RB 1 and RB 2 Ring-Flash Units for close-up flash photography, see Fig. 8 (RB 1) and Fig. 9 (RB 2)

Ihagee Kolpofot (Fig. 8) and Ihagee Endoscope Adaptor for taking photographs inside hollow vessels and particularly body cavities

Lens Magnifier and Top Lens for close-up work and photomicrography, see Fig. 1

Lens Reversal Ring and Adaptor Ring for using photomicrographic lenses to take extreme close-ups

A range of useful focusing aids, including special focusing screens, plane ground-glass screens, screens with lens coverage markings, etc.

Ihagee Spectroscope Connecting Ring or Connecting Shell

Ihagee Telescope Adaptor for Astro Photography

The illustrations may differ in certain particulars from the actual appearance of the camera and its accessories.

IHAGEE KAMERAWERK AG in Verwaltung

8016 DRESDEN

Form 1012a/100/6708 III/29/1 Ag 22/057/68 Made in Germany **E**

