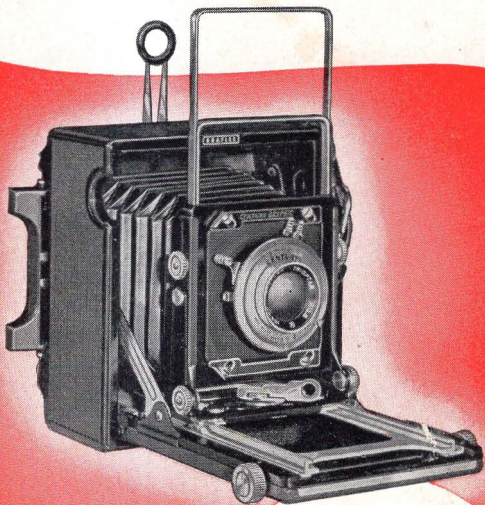


THE
CENTURY
GRAPHIC



\$**109**⁵⁰

COMPLETE WITH LENS
AND SHUTTER

Check These Outstanding Features:

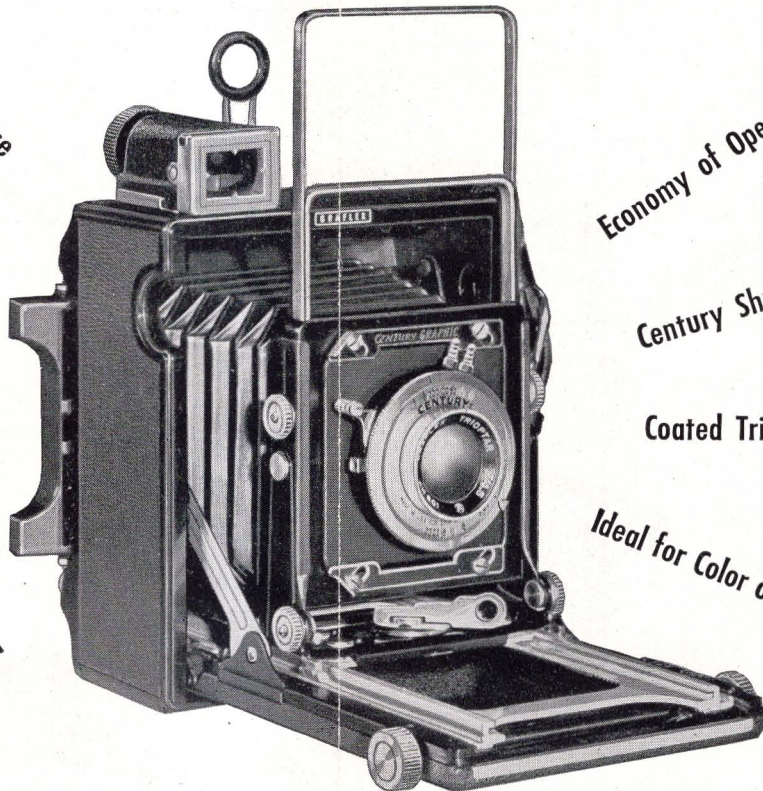
Easy to Use

Precision Workmanship

New Graflok back

Flash Synchronization

Rugged Construction



Economy of Operation

Century Shutter

Coated Trioptar Lens

Ideal for Color or Black and White

Optical View Finder shown above optional at extra cost.

NOW

**... A LOW-PRICED QUALITY CAMERA BY THE MAKERS OF
WORLD FAMOUS SPEED GRAPHIC AND GRAFLEX CAMERAS!**

THE CAMERA DESIGNED FOR PICTURE-MAKING PLEASURE

Now you can own a fine Graphic camera—the Century Graphic—packed with all the features that have made the Speed Graphics the favorite of press and commercial photographers. Here's a camera built to your requirements—popular film size—lightweight and rugged—handy—easy to carry. The Century Graphic is equipped with an outstanding color corrected lens, the new Graflex 103mm $f/4.5$ Trioptar—coated for added efficiency. This fine lens is fitted to the new Century shutter with built-in flash synchronization at all speeds, other lenses optional.

LOOK AT THE FEATURES...

double extension bellows—rising, shifting, tilting front standards—drop bed—telescoping action frame finder—interchangeable film attachments—interchangeable lenses—ground glass focusing panel—folding infinity stops.



THE GRAFLOK BACK Standard equipment on the new Century Graphic, and available for all $2\frac{1}{4} \times 3\frac{1}{4}$ Graphic models, the new GRAFLOK Back enables you to use the Graphic Double Cut Film Holders, Grafmatic Holder (six septum magazine), Film Pack Adapters and the Roll Film Holder interchangeably. The most up-to-date features including the all-metal, four-sided removable focusing hood, have gone into the construction of this assembly. Counter-balancing, knee-action arms make it easy to insert film receptacles, yet give even, firm pressure, insuring positive registration on the focal plane.

NEW 120 GRAFLEX ROLL FILM HOLDER

The new Graflex roll holder may be used with the Century Graphic as well as other $2\frac{1}{4} \times 3\frac{1}{4}$ Graphic and Graflex Cameras. Uses economical standard 120 roll film! Has automatic film advance and visible film counter! Available in TWO popular picture sizes: for eight $2\frac{1}{4} \times 3\frac{1}{4}$ or twelve $2\frac{1}{4} \times 2\frac{1}{4}$ pictures and two models, Graphic and Graflex. The Graflex roll holder enables you to use color or black-and-white film. It's an important accessory you will want to see at your dealers.



NOW . . . A LOW-PRICED QUALITY CAMERA BY THE MAKERS OF WORLD FAMOUS SPEED GRAPHIC AND GRAFLEX CAMERAS!

CENTURY GRAPHIC COMBINATIONS

CAT. NO.

- CY-71 With 103mm Trioptar $f/4.5$ lens
CY-724 With 101mm KODAK Ektar $f/4.5$ lens
CY-734 With 101mm GRAFLEX Optar $f/4.5$ lens

CENTURY GRAPHIC ACCESSORIES

HOLDERS

- 1246 No. 23 Graphic 120 Roll Film Holder ($2\frac{1}{4} \times 3\frac{1}{4}$ pictures)
1249 No. 22 Graphic 120 Roll Film Holder ($2\frac{1}{4} \times 2\frac{1}{4}$ pictures)
1212 $2\frac{1}{4} \times 3\frac{1}{4}$ Graphic Film Holders
1232 $2\frac{1}{4} \times 3\frac{1}{4}$ Graphic Film Pack Adapters
1266 $2\frac{1}{4} \times 3\frac{1}{4}$ Grafmatic Holder (six septum magazine)

FLASH EQUIPMENT

- 2725 No. 25 Graflite Flashing Unit
(2-cell Graflite Battery Case with 5" reflector)
2701 20" Synchronized Shutter Cord
2756 Handle lugs for mounting Graflite
2754 Mounting Plate for Rangefinder equipped camera.

ACCESSORIES FOR GRAFLITE FLASH EQUIPMENT

- 2746 Shield for 5" Graflite Reflector
2747 7" Graflite Reflector

OPTIONAL AND ACCESSORY LENSES

- 205 65mm ($2\frac{1}{2}$ ") GRAFLEX Wide Angle Optar $f/6.8$ lens
121 80mm Wide Field Ektar $f/6.3$ lens
271 202mm (8") GRAFLEX Tele-Optar $f/5.6$ lens
282 25cm (10") GRAFLEX Tele-Optar $f/5.6$ lens

RANGEFINDER AND ACCESSORY

- 3148 Kalart E-5 Prism Rangefinder
3173 Kalart Focuspot for Graflite

ADDITIONAL ACCESSORIES

- 4224 Compact Carrying Case for Camera, Holders and Small Accessories (no flash equipment)
4212 Compact Carrying Case for Camera, complete Graflite Flash outfit, additional holders, flash lamps and other accessories.



GRAFLEX, Inc., ROCHESTER 8, N. Y.

J. G. Kretschmer Company

315 SOUTH 17TH STREET

OMAHA, NEBRASKA