


ROBOT

ROYAL 36s

ROYAL 24s



Always
„on the go”

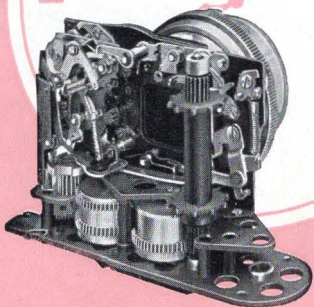
Wind it like a watch —

and then keep on
pressing the button!

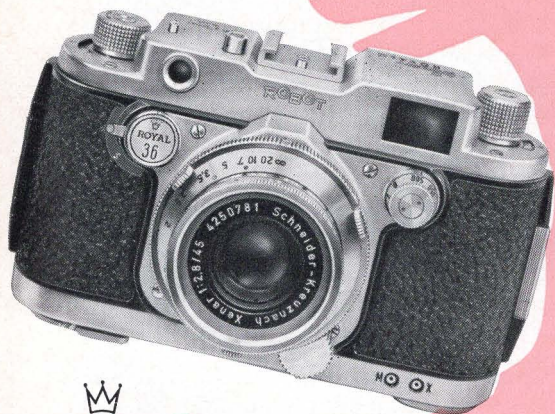
This is the yet unsurpassed feature of the fully automatic **ROBOT**, the acme of photographic technique. The camera is always poised for action, ready for the next, and perhaps even better picture.

The heart of the **ROBOT**

is its automation. After every exposure it winds on the film by one frame exactly, tensions the shutter and operates the frame counter — all with absolute reliability and ease.



Throughout all these operations, the shutter works without the slightest trace of vibration. The all-metal shutter is remarkably immune to both heat and cold, so that it is unaffected by climatic changes.




ROBOT
ROYAL 36 S

(24 x 36 mm)
with Schneider Xenar
f/2.8, 45 mm
with Zeiss Sonnar
f/2, 50 mm




ROBOT
ROYAL 24 S

(24 x 24 mm)
with Schneider Xenar f/2.8, 38 mm
with Schneider Xenon f/1.9, 40 mm

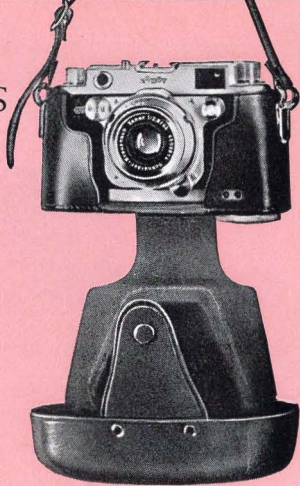
The features of the **ROBOT** ROAYL 36 S and 24 S

- A** Fully automatic operation. This means that after each exposure the shutter is retensioned, the film is moved on, and so is the frame counter — all automatically. In this way up to 20 pictures can be made in succession.
- B** Built in AUTO-SEQUENCE RELEASE for "kinography": As long as you press the button, up to 6 exposures per second can be taken by the camera.
- C** Coupled view/rangefinder for automatic sharp focusing with all lenses.
- D** Rotor shutter speeds from $1/4$ to $1/500$ sec. and "B" setting for time exposures.
- E** Twin flash contacts for flashbulbs and electronic flash.
- F** Interchangeable lenses in bayonet mounts.
- G** Colour-dot system to indicate depth of field.
- H** Takes both standard cartridges or special **ROBOT** loading cassettes (for bulk film) and take-up cassettes.
- I** Removal of partly or completely exposed film in daylight.
- K** **ROBOT ROYAL 24 S**
Due to the economic picture size you get 55 pictures 24x24 mm out of one standard film length: very important with color film!

ACCESSORIES

ROBOT ROYAL 36 S

The front lid of the ever-ready case is detachable so that the flash contacts are accessible.



The following interchangeable lenses are available for the

ROBOT ROYAL 36 S

The Schneider Tele-Xenar $f/3.8$, 75 mm — an excellent telephoto lens greatly favoured for portraiture, sports events and animal photography. The Schneider Xenogon $f/2.8$, 35 mm — a wide angle lens with remarkable depth of field for interiors and architectural exposures, as well as for candid shots.

There is also a universal viewfinder for $f/30$ — 75 mm, which has an adjustable anti-parallax device.

Or:

Bright-line Viewfinder for $f=75$ mm with reflecting image of field limitation for the actual focal distance, with parallax compensation.

The **ROBOT** lenshood, with its threaded mount, need not be detached when the ever-ready case is closed. It needs simply be telescoped back over the lens.



The **ROBOT** colour filters can be screwed into either the lenshood or the lens mount. They can also remain mounted, in either position, when the ever-ready case is closed. For close-up photography, easy-to-use close-up lenses and macro-extension rings are also available.



Sunshade,
color filters,
close-up lenses and
macro-extension rings
can be used with the **ROBOT**
ROYAL 24 S, as well as
with the **ROBOT** ROYAL 36 S.

And these are the interchange-
able lenses for the **ROBOT**
ROYAL 24 S, also coupled with
the rangefinder:

Schneider Wide-Angle Xenagon
f/3.5, 30 mm

Schneider Tele-Xenar f/3.8, 75 mm

Schneider Tele-Arton f/4, 90 mm

Schneider Tele-Xenar f/4, 135 mm

Schneider Tele-Xenar f/5.5, 200 mm

Universal viewfinder for
f/30—150 mm

and Bright-line viewfinders for
f/75 mm, f/90 mm, f/135 mm



Available for
Tele-Xenar
f = 200 mm
Prismatic
Viewfinders
(monocular
telescope 3x)

ACCESSORIES


ROBOT
ROYAL 24 S

As slow as any — as quick as none!

This is the main feature of the **ROBOT** ROYAL 36 S and 24 S: The built-in AUTO-SEQUENCE RELEASE gives a lot of unexpected chances for action-life series. You can choose between single exposure (setting "N") and sequence release (setting "S") up to 6 pictures per second.

How many thrilling, exciting moments during important games or sporting events — fancy high diving, football, and the like — occur but are "missed", because no camera was available to react with the necessary speed!

Not only press photographers, but serious sportsmen, coaches of high divers, equestrians, ski-jumpers and many others will appreciate the built-in AUTO-SEQUENCE RELEASE of the **ROBOT** ROYAL. It gives them the best possibility to control the performance of their athletes and, therefore, forms the basis for their successful training and development.

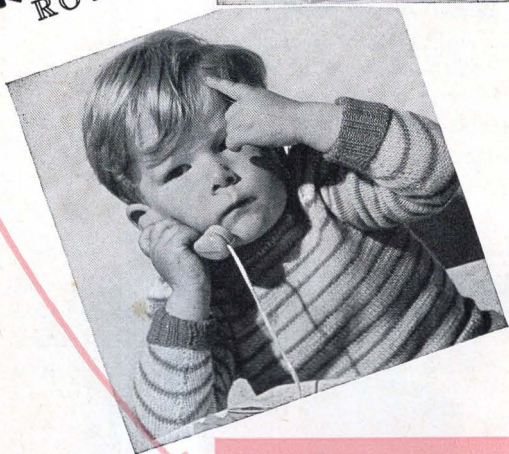
But the **ROBOT** ROYAL is not only a rapid-sequence camera. For the carefully planned single exposure, it contains the crystal-clear viewfinder and the precisely operating coupled rangefinder.

Due to its fully automatic operation — rugged design — resistance to cold — insensibility to shock, the **ROBOT** ROYAL is able to handle a multitude of special applications of scientific-technological nature. From the photography of surgical operations its various applications range to photographic recording of measurement and test apparatus readings, police service and aerial photography. There are many further uses in almost every possible branch of Science, Industry and Technology.



Kinographed
with


ROBOT
ROYAL



Have a **ROBOT** ROYAL
demonstrated by your
Photo-Dealer.

U.S. Agents:

KARL HEITZ, Inc. 480 Lexington Ave.
NEW YORK 17/N.Y. Tel.: Yu-Kon 6-4920

ROBOT-FOTO GM
BH **DÜSSELDORF**
Germany