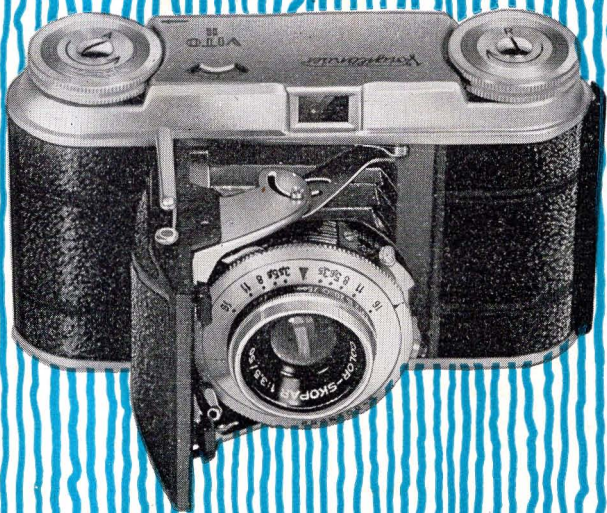


Voigtländer

VITO II



A MODERN 35 mm. CAMERA

The VITO II

. . . is a superb testimonial to the traditionally outstanding workmanship, design, and ingenuity of the world famous Voigtlander organization. The Vito is not an ordinary camera. Take it in your hands and see for yourself what a difference precision construction and smart design make.

The Vito abounds in outstanding features.

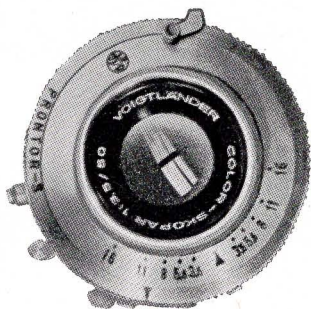
For example, you'll fall in love with the convenient bar-type shutter release on the body of the camera which gives the operator a firm grasp, eliminating entirely any risk of camera movement. Press down ever so gently on the shutter release and the exposure is completed — close the camera and watch the release retract automatically!

The safety features are of particular importance. Cleverly built-in interlocking mechanism makes double exposures impossible. An automatic stop prevents you from overwinding after each exposure.

A PERFECT CAMERA FOR BLACK AND WHITE OR COLOR

FAMOUS VOIGTLANDER LENS

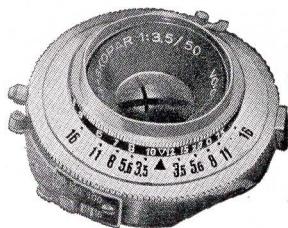
The value of Voigtlander lenses lies first in their remarkable optical efficiency and secondly in the conscientious manufacture which permits no variation in quality. The Color-Skopar, composed of four elements, combines the utmost sharpness with particularly great resolving power. The Color-Skopar has an anti-reflection coating which increases brilliancy and light transmission, and is of tremendous value when shooting against the light.



ZONE FOCUSING

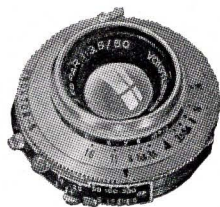
Zone focussing gives the Vito box-camera simplicity. This feature is particularly useful when photographing moving subjects like children playing, or sports, when lack of time does not permit accurate focussing. It is also useful when taking unobserved "shots", which result very often in surprisingly fine pictures

On the depth of field scale engraved on the shutter, will be found two symbols—an inverted *triangle* and a *circle*. Using a lens opening of $f5.6$, with the distance indicator set opposite the *triangle* (for close work), the depth-of-field extends from 8 feet to 15 feet. For medium or distant views, using the *circle*, the depth reaches from 15 feet to infinity.



HANDY SCALES

All scales, such as shutter speeds, lens stops, distance markings and depth-of-field table are conveniently arranged on the lens mount and shutter housing so that they may easily be read off at a glance from above.

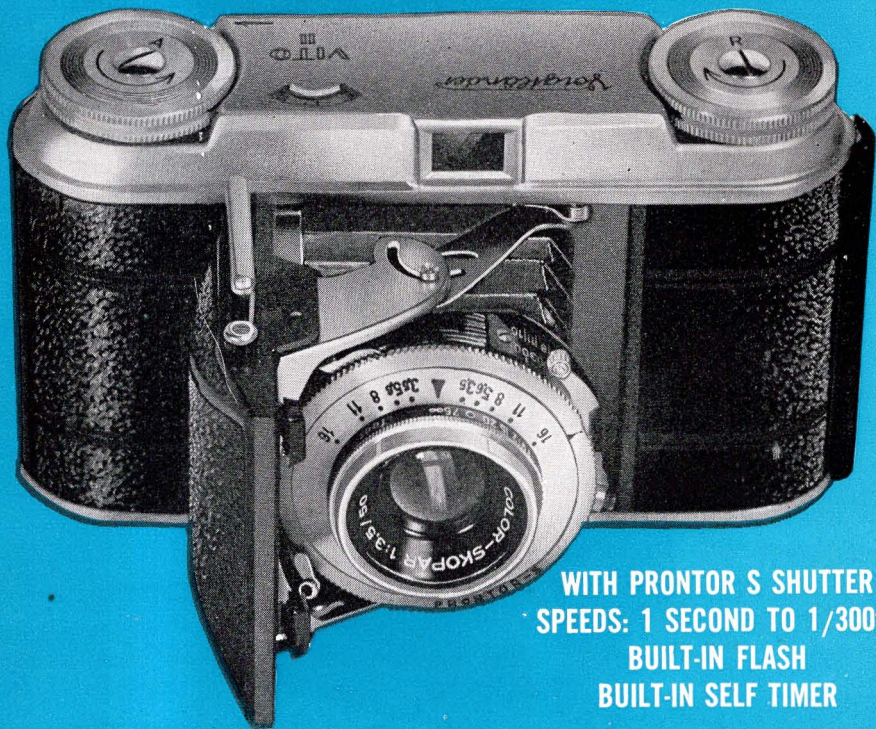


HERE ARE THE OUTSTANDING FEATURES OF

VITO II

Color-Skopar f3.5 coated lens • Automatic locking device — impossible to double expose — impossible to overwind • Counting device automatically registers each exposure • Direct view optical finder • Special shutter release eliminates camera movement • Depth-of-field scale • Cable release socket • Sturdy, compact, streamlined • Body covered with black leather, satin chrome finish • Uses standard 35mm cartridges, black and white or color • Hinged back facilitates loading.

A NEW MODEL... LOW PRICED.

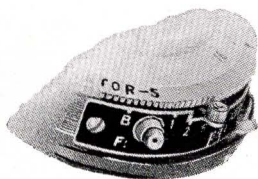


WITH PRONTOR S SHUTTER
SPEEDS: 1 SECOND TO 1/300th
BUILT-IN FLASH
BUILT-IN SELF TIMER



WITH COMPUR RAPID SHUTTER
SPEEDS: 1 SECOND TO 1/500th
BUILT-IN FLASH

.. FAMOUS VOIGTLANDER CAMERA



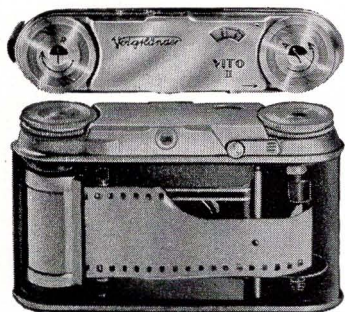
BUILT-IN FLASH SYNCHRONIZATION

Both the Compur and the Prontor-S shutters are fitted with internal flash contacts. Practically any standard flash unit can be attached to the camera by a connecting cord plugged into the bayonet coupling on the shutter. This built-in feature assures accurate synchronization at all times.

LOADING THE CAMERA

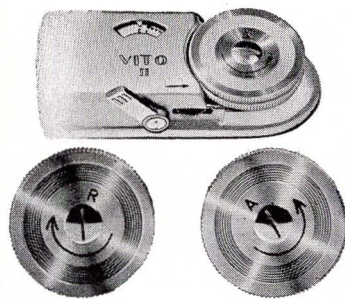
The camera back is opened by lifting up the locking latch. Pull up knob "R" as far as it will go. Film cartridge is placed in spool chamber. Knob "R" is now pushed back into its original position. The film is pulled across to the take-up spool and inserted in the wide slot. Knob "A" is turned until it stops. The back can now be closed, the counter set and the camera is ready for action.

The VITO II can actually be loaded in just a few seconds.



UNLOADING THE CAMERA

After the last exposure has been made, the film is rewound into the cartridge. First, lift up the release lever as far as it will go, and hold it in this position. Gently turn knob "R" in the direction of its arrow, until knob "A" stops turning. The camera back may now be opened and the cartridge removed by first pulling up knob "R".



VOIGTLANDER ACCESSORIES

Sky and cloud pictures will be much more effective with a Voigtlander filter slipped over the lens. For cutting through haze and for snow pictures, a filter is almost a must. The light yellow is recommended for all general work, while the medium filter is useful in obtaining dramatic effects.

Focar attachments open up the fascinating field of close-up photography. They allow relatively large reproduction of flowers, small animals, stamps, etc. The #1 Focar is for working distances from approximately 17 inches to 32 inches, and the #2 calls for distances from 12 inches to 17 inches.

Another extremely useful accessory is the Voigtlander lens shade, which is particularly valuable when shooting against the light serving to hold back extraneous rays.

ACCESSORIES

- 29mm. Light Yellow Filter
- 29mm. Medium Yellow Filter
- 29mm. Focar No. 1
- 29mm. Focar No. 2
- 29mm. Chrome Finish Lens Shade
- Eveready Carrying Case



VITO II

STREAMLINED
FOOLPROOF
HANDSOME
GRACEFUL
PRECISE

