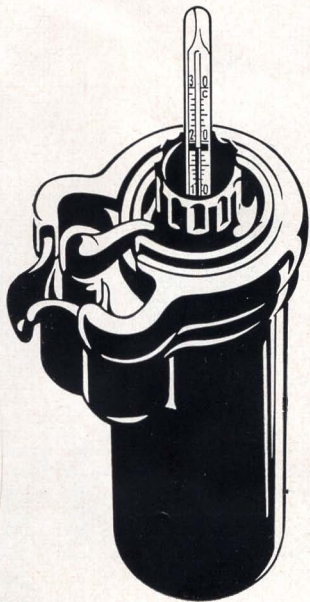




Daylight Developing Tank

Working Directions



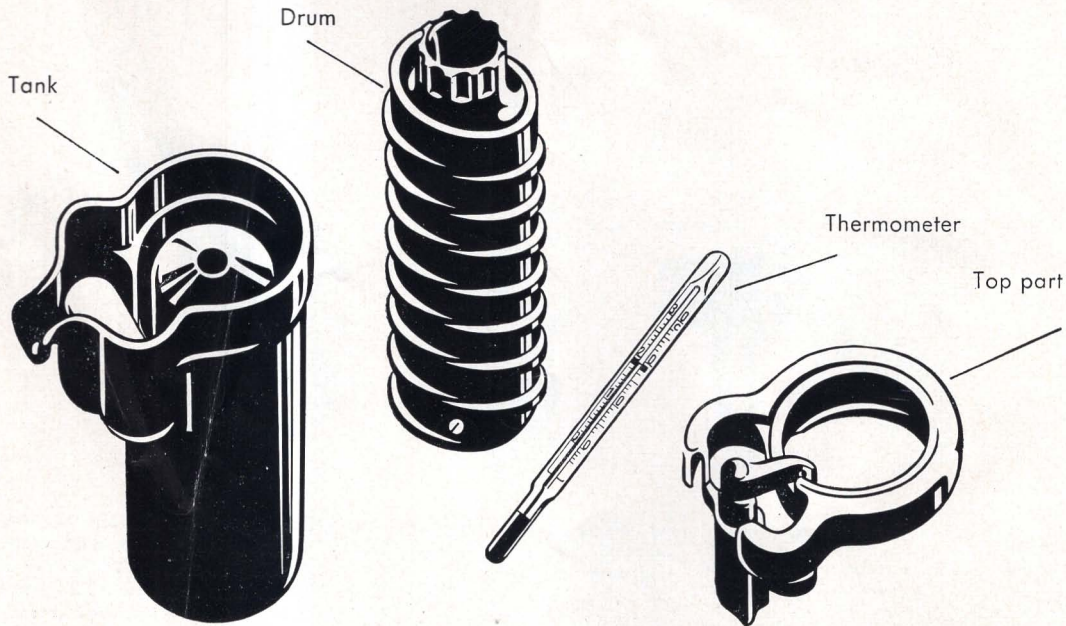
The

MINOX-Developing Tank

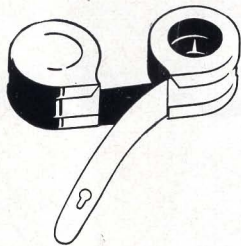
requires no dark-room. Films may be inserted and completely developed in full daylight.



The MINOX Tank: closed



Components of the MINOX-Developing Tank



For insertion into the tank the film cartridge is prepared by carefully pulling out the film-leader from that one of the two boxes not provided with a circular opening. **Note:** Be sure not to pull any film out of the other box with the circular opening. Screw out film-drum of the tank in clockwise direction up to the work stop and subsequently detach it together with the top part.



Place cartridge upon the top part and screw out the drum until the film-end cap be shoved under the spring and buttoned to the screw. Now screw in the drum, but not beyond the point where screw stands at the end of the film slot, with the film lying flush and smooth.



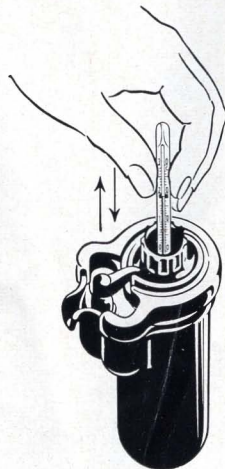
This done, the tank is placed over the top part taking special care that the parts fit and lock perfectly. By counter-clockwise turns the drum is to be screwed back into the tank.



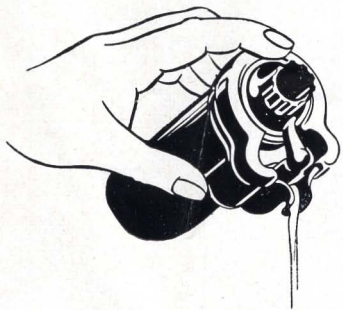
The end position is reached as soon as the elastic hook on the top part engages the upper end of the drum and as resistance is met with.



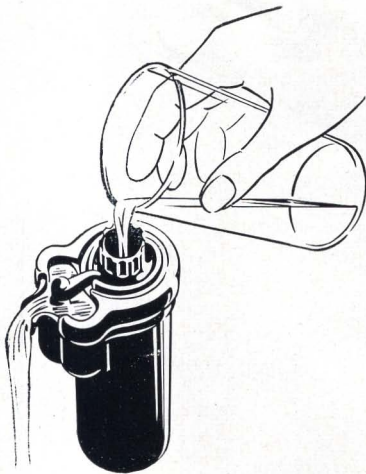
The carefully filtered developing agent (40 ccm.) is now slowly poured in through the central opening until it shows up in the wide part of the opening. By occasionally lifting the tank and setting it gently down on the table air bubbles will be prevented from clinging to the film.



Now place the thermometer into the central opening moving it slowly up and down during developing to produce a circulation within the liquid. The prescribed developing temperature is to be currently checked and maintained.



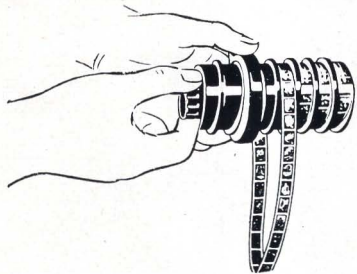
Pour out developing liquid after process is completed. In doing so hold top part in place with the index finger thus preventing it from sliding out of the tank.



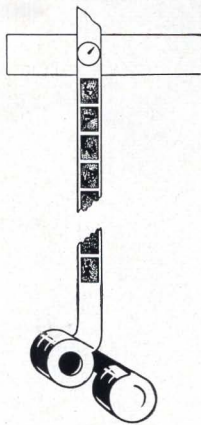
The tank is now to be thoroughly rinsed with clean and, possibly, filtered water, changing the water two or three times. This done, the fixation agent is poured into the tank. When fixation bath has been removed thoroughly rinse the tank with clean water.



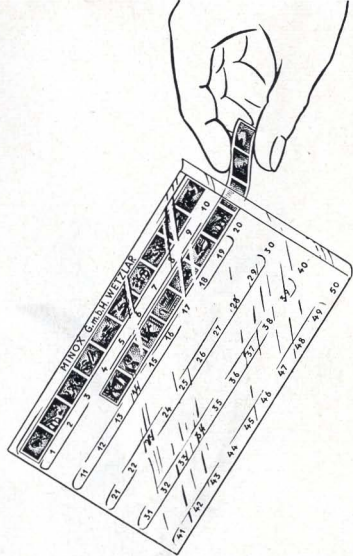
For final cleaning and washing a thin stream of water (through filter if possible) should be directed into the central opening. After rinsing the drum and top part are to be taken out of the tank. While holding the top part in the left hand, turn the drum clockwise in horizontal position, whereupon the film will wind off by itself in a loop (see picture on next page).



Soaking the film for a few minutes in a wetting agent (which is part of the MINOX-developerset) prevents it from getting stains or streaks after drying. No need therefore to clean the film with a moist buckskin, thus avoiding scratches on the emulsion and shortening the drying process considerably.



For drying suspend the film, as indicated, the empty cartridges hanging down and acting as a weight. The drying should be done in a place free from dust.



After drying, the film is cut into 5 strips of 10 pictures each, which are being kept in a film envelope. To keep them in proper position and order the following method is suggested when cutting the film.

Continued on last page.

First cut off the empty film cartridge at the first picture. Next the strip with the 10 pictures to follow. The latter, with the emulsion side down and with picture Nr. 1 in front, is now inserted into the first section (1 to 10) of the film envelope. The next strips of the film are then to be proceeded with in the same manner, whereupon all pictures will be in the envelope duly orientated as regards sides, horizontal pictures in upright position, the numbers corresponding with the numbers of the exposures.

After use, remove the drum from the top part. Thoroughly clean and dry all parts of the tank even if it be intended to use the tank again right afterwards. The tank should not be assembled until all parts are completely dry.

MINOX G.m.b.H., Optical and Precision Engineering Works
Giessen, P.O.B. 137, West Germany