

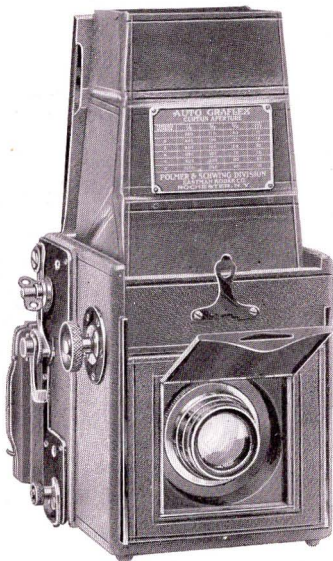
**DIRECTIONS
FOR OPERATING
THE AUTO GRAFLEX JR.**

Directions for Operating
The Auto Graflex Jr.



Folmer & Schwing Division
Eastman Kodak Co.
Rochester, N. Y.

DIRECTIONS FOR OPERATING *the* AUTO GRAFLEX Jr.



FOLMER & SCHWING DIVISION
Eastman Kodak Co.
ROCHESTER, NEW YORK

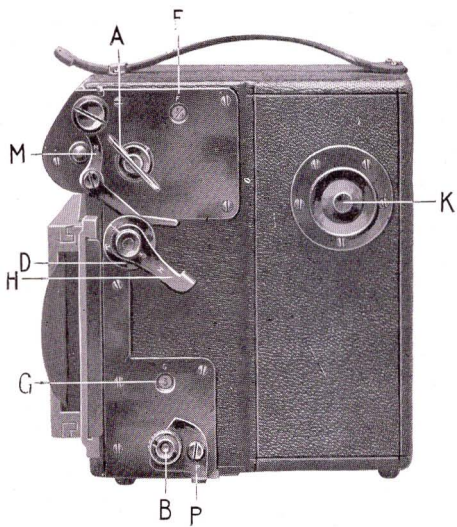


DIRECTIONS FOR OPERATING *the* AUTO GRAFLEX Jr.

The manipulation of the Auto Graflex Jr. Camera is extremely simple and by carefully reading the following instructions its operation will be readily understood.

Open the Focusing Hood of the Camera by unlatching the spring catch C at the top near end of handle. Set mirror by pressing lever H down as far as it will go.

The focus is adjusted by turning the large milled head K on the right side of the Camera near front. The correct position to hold the Camera for general work is against the body. All parts are so arranged that the hands fall naturally into proper position.



To Set Shutter for Instantaneous Work.

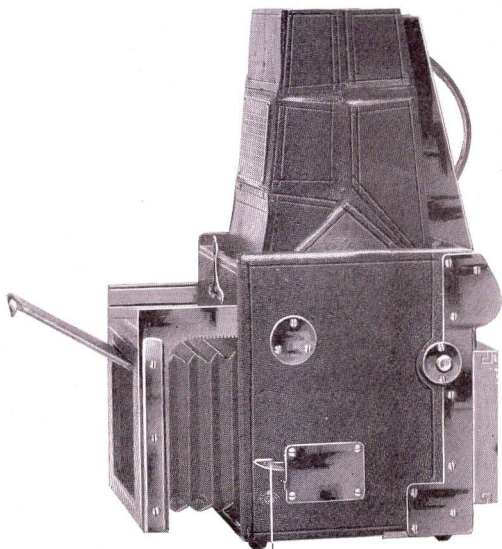
Push lever H down until it locks.

Depress disk D and revolve until letter "I" stands directly opposite the white mark on lever H.

Wind the curtain by turning key A to the right as indicated by the arrow, until the desired aperture appears at F. The Graflex curtain is made in one long piece and contains apertures varying from "full opening" to $\frac{1}{8}$ of an inch. When the letter "O" appears at F, the curtain is wide open. The other apertures "T" (for time exposures), $1\frac{1}{2}$, $\frac{3}{4}$, $\frac{3}{8}$ and $\frac{1}{8}$ follow in rotation as key A is turned.

For slow instantaneous work set curtain aperture index at "O." The rising mirror will open the exposure, and the dropping curtain close it, giving approximately $\frac{1}{5}$ of a second exposure.

Remember the curtain cannot be adjusted without first pushing lever H down until it locks. The exposure is made by pressing lever E located on left side of Camera.



E

Time Exposures.

Depress and turn disk D until letter "T" is directly opposite white mark on lever H.

Set mirror by pushing lever H down until it locks. Focus by means of the milled button K.

Wind curtain by turning key A until "T" appears at F. If the curtain is already wound and any one of the apertures $1\frac{1}{2}$, $\frac{3}{4}$, $\frac{3}{8}$ or $\frac{1}{8}$ appears at F, then release the curtain by pushing lever M until letter T is shown at F. Release mirror by pressing lever E.

The exposure is made by one pressure of lever M, which opens the shutter—a second pressure of the same lever closes it.

If the curtain is fully wound so that the $\frac{1}{8}$ aperture appears at F, a change to any other aperture can be immediately made by simply pushing lever M.

To Regulate the Speed.

To govern the speed, turn milled head B until tension number appears at G. The numbers run from 1 to 6—the highest number indicating the greatest speed.

The following table gives approximate degrees of speed in fractional parts of seconds, obtainable with the tension numbers 1 to 6, and the various curtain apertures.

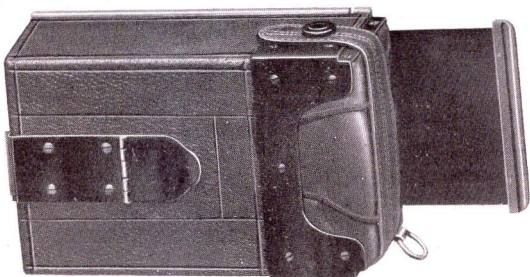
TENSION NO.	CURTAIN APERTURE			
	$\frac{1}{8}$ INCH	$\frac{3}{8}$ INCH	$\frac{3}{4}$ INCH	$1\frac{1}{2}$ INCH
1	350	110	40	10
2	440	135	50	15
3	550	160	65	20
4	680	195	75	25
5	825	235	80	30
6	1000	295	90	35

To decrease speed of shutter, release tension of spring by pushing escapement P back and forth.

Suggestion for Exposures with the Auto Graflex Jr.

GROUP 1 Interior Portraits near Window	BRIGHT and CLEAR 1/35 f 5.6	CLOUDY 1/10 f 4.5	DULL 1/5 f 4.5
GROUP 2 Slight Movement — Portraits Landscapes	IN SHADE 1/90 f 5.6 IN OPEN 1/130 f 8	IN SHADE 1/60 f 4.5 IN OPEN 1/90 f 6.3	 IN OPEN 1/75 f 4.5
GROUP 3 Average Movement Street Scenes Pedestrians	1/160 f 8	1/160 f 6.3	1/160 f 5.6
GROUP 4 Brisk Movement Children Playing Autos	1/330 f 8	1/330 f 6.3	1/330 f 5.6
GROUP 5 Rapid Movement Athletics Racing	1/450 1/1000 f 8 f 5.6	1/450 1/1000 f 6.3 f 4.5	1/450 1/1000 f 4.5

Instructions for Magazine Plate Holder for Auto Graflex Junior



To Load

Remove cover by releasing catch at left-hand end of magazine. Remove the metal septums and place them in consecutive order from No. 1 to No. 12, placing No. 1 on top. Load by slipping plates into the septums, emulsion side out. Replace septums in magazine in regular order, starting with septum No. 1. Place the septum in with the closed end of septum towards end of magazine to which the bag is attached. With the 12

septums in position, replace cover and attach magazine to back of camera by hooking the upper flange in first and securing same with the sliding bar at bottom.

To Operate

Loosen snap catch on strap, unfold leather bag, and draw dark slide, when plate in septum No. 1 is ready for exposure. Succeeding exposures may be made as follows: Take hold of ring on drawbar at bottom of magazine and pull it out as far as it will go, then push drawbar back into magazine. This draws the septum containing plate into the leather bag. Take hold of the end of bag between thumb and forefinger and press the bag forward until the end of septum can be gripped between the thumb and forefinger, and draw out a trifle until the septum is free, which will allow it to be swung to rear of magazine when it can be pressed forward into the back of the magazine until the springs force it forward.

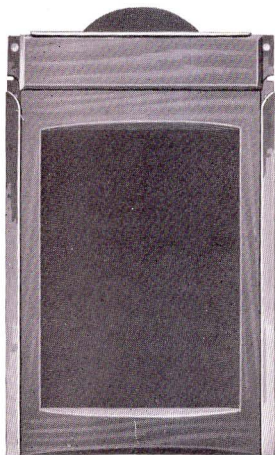
The number of plate exposed can be noted from the back by raising the spring-actuated cover, showing the number through the ruby window. Care should be exercised to note when No. 12 has been exposed, so as to prevent double exposing on No. 1.

To remove the plates from septums, hold the open end of septum between the thumb and forefinger, and by slightly pressing inward it bows the septum back, so as to free the plate from the upturned edge of the septum, allowing it to slip out freely into the hand.

Instructions for Film Pack Adapter for Auto Graflex Junior

To Load

Open the adapter by withdrawing the front frame. Place the film pack in the back of adapter so that the black paper tabs protrude through the opening at the end of adapter



Auto Jr. Film Pack Adapter

and the printed label on film pack is towards the metal back. Replace the front frame with the face stamped "Front" forward, when the adapter is ready to attach to back of camera.

To Expose

Withdraw the dark slide of adapter and front tab marked "Safety," which will expose film No. 1. After each exposure the tab is drawn forward to index, torn off, and repeated until the 12 exposures have been made, when the adapter may be removed and opened to remove the exposed pack and reloaded, or the dark slide may be inserted after any number of exposures less than 12 have been made, and the adapter removed. The pack, being daylight loading, may be loaded into or removed from the adapter before exposing, or after the full 12 exposures have been made.