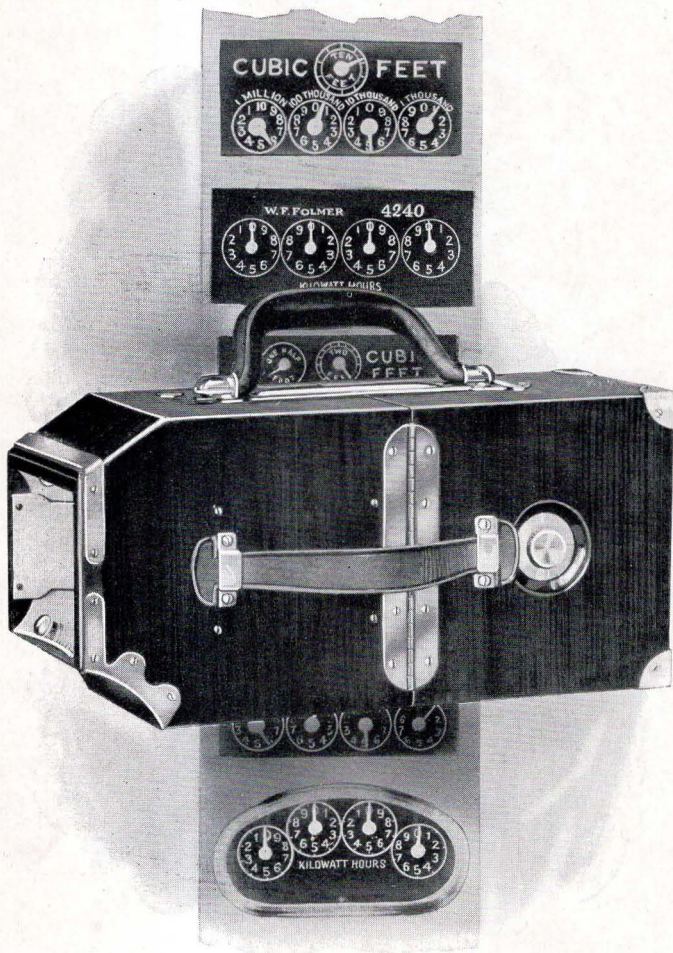
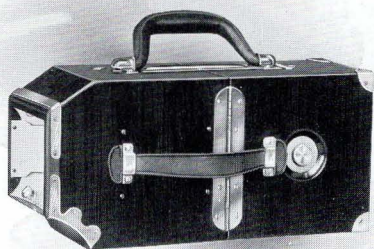


# *The Folmer* **FACTOGRAPH**

*The Meter Reading Camera*



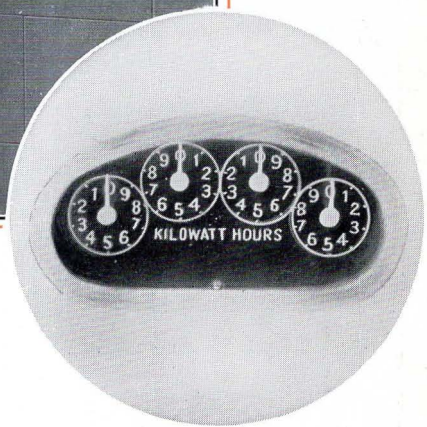
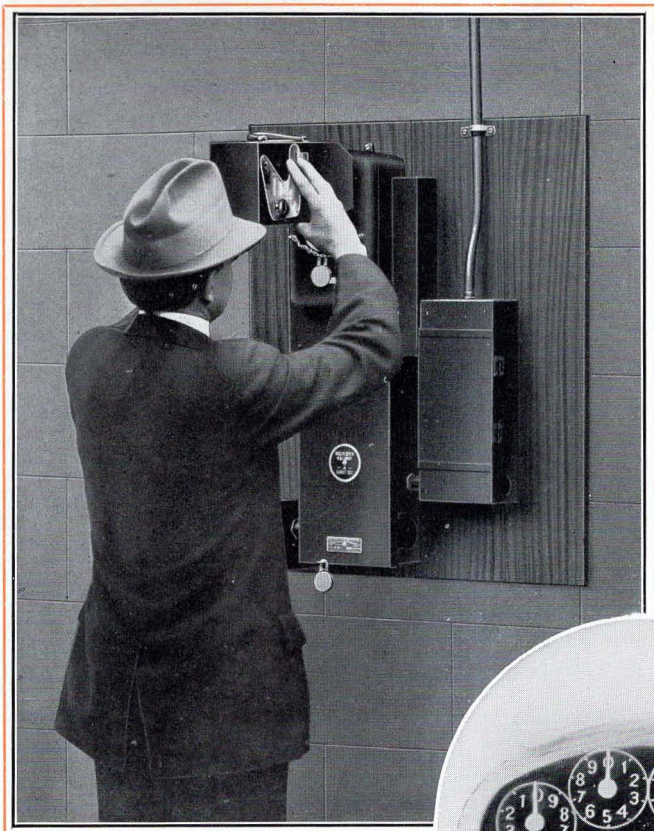
*The Folmer*  
**FACTOGRAPH**



*The Meter Reading Camera*

*Manufactured by*  
**THE FOLMER GRAFLEX CORP.**  
ROCHESTER, N. Y.

*Makers of*  
GRAFLEX, GRAPHIC CIRKUT and  
AERIAL CAMERAS and  
STUDIO APPARATUS



*"Click" and the meter is read, producing a legible, permanent, indisputable record.*

*The Factograph brings photographic fidelity, speed and economy to the meter reading field.*



# THE FACTOGRAPH



OR many years Gas and Electric Companies have felt a growing need for some form of meter reader whose accuracy the public could not dispute. Since a photograph is the only evidence about which there can be no argument, Public Service Officials turned to the camera as the next logical development in meter reading.

After a lengthy series of experiments, Mr. W. F. Folmer, now President of the Folmer Graflex Corporation, developed the Factograph, the meter reading camera. This was expressly designed to overcome the many adverse conditions peculiar to meter reading and was placed on the market only after it had proved superior in every way to the older, less accurate and slower methods.

The Factograph reads meters with photographic fidelity, and brings its indisputable record to the office files, ready for billing. It not only reads meters accurately, but it reads them speedily and economically. Its exclusive features are specially designed to overcome the errors of the pad and pencil method. Its readings are always correct and never subject to suspicion. With the Factograph, there is no re-reading, no retracing of steps, no argument. It records reliably the reading of the "peak" on demand meters before they are reset for another month. It works efficiently with all types of gas and electric meters, and many other recording instruments, as well. It is the modern, reliable, and indisputable meter reader.

The Factograph differs from the ordinary camera in that the meter-reading is reproduced directly on the positive. No prints

---

## *The* FOLMER FACTOGRAPH ---

are needed. This elimination of the customary photographer's negative is accomplished through the aid of a mirror within the camera. This mirror reverses the reading, so that the developed paper shows an exact reproduction of the dial.

The film used in the Factograph comes in the familiar roll form. Each roll makes 75 exposures, i. e., 75 readings. Each exposure is  $1\frac{1}{2}$ " x  $2\frac{1}{8}$ " in size, which makes it easy to read after developing.

The number of the meter or the name of the consumer, both of which are easily affixed to the meter dial, are recorded with the reading. You bill from this. There is no chance of error, no opportunity for argument. If a bill should be disputed, the exact record of the reading is at hand, ready to be shown as conclusive proof of accuracy. With the Factograph, there can be no skipping of meters on the part of employees, no guessing at readings. Each meter must be read and once read, its reading is accurate. It is impossible for it to be otherwise. In this exact check on both meters and operators, Public Utility Companies have found the long sought solution to a difficult problem.

Operated as it is by men of such varying degrees of education and intelligence and under all sorts of conditions the Factograph is necessarily made fool-proof. Its construction is extremely simple, and unusually sturdy, making it capable of withstanding rough usage and insuring accurate, legible, and indisputable records at all times.

The Factograph, with its above mentioned features, forms a bond between the consumer and the Service Company, built upon the assured acceptance by the public of the absolute accuracy of meter readings.

---

## For METER READING

---



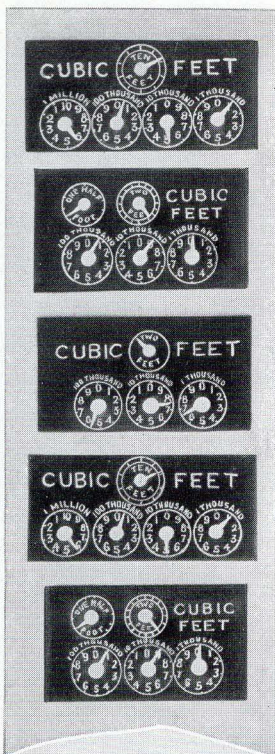
*Simple in operation and sturdy in construction, the Factograph is light in weight, easy to carry and easy to operate.*



*The specially designed batteries and extra bulbs for illuminating the meter dial are compactly stored within the Factograph. They are exceptionally long lived.*



# Meter Reading with



Reading a meter with the Factograph is only a matter of seconds. The front of the camera is placed against the face of the meter. The operator clicks a lever, and the job is done. No special training is necessary. A five minute explanation suffices. It makes no difference whether the meter be in a well lighted basement or the darkest coal bin, the Factograph is so designed that it is absolutely independent of lighting conditions. An ingenious illuminating device, consisting of four miniature mazda bulbs, located in the front of the camera, spotlights the dial, throwing an evenly



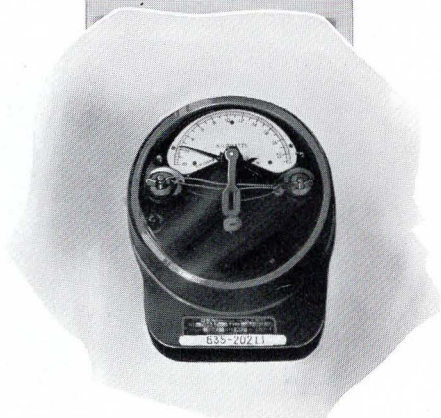
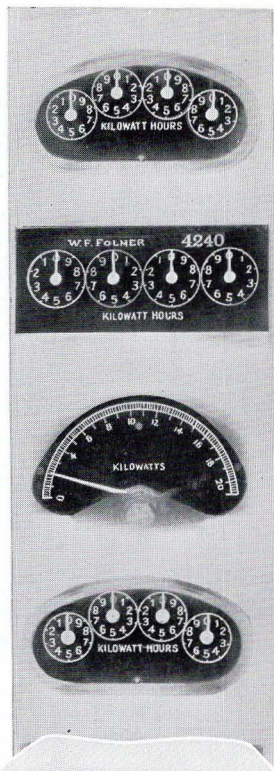
*The Factograph is not limited to any special type of meter. It records all standard types with equal fidelity.*

# The FACTOGRAPH

diffused light over the entire surface of the register. This lighting apparatus is so shielded that no glare will hit the lens and the illumination of the dial is kept uniform. Power for the bulbs is supplied by specially constructed batteries, making the Factograph a portable and independent unit.

The lights are automatically turned on when the operator presses the lever, the shutter opens at the same instant and closes at a fixed speed and the film is released so that it may be wound for the next reading. The shutter automatically locks and no second reading may be taken on

*Both electric and gas meters are usually read by the same operator and appear on the same film.*





---

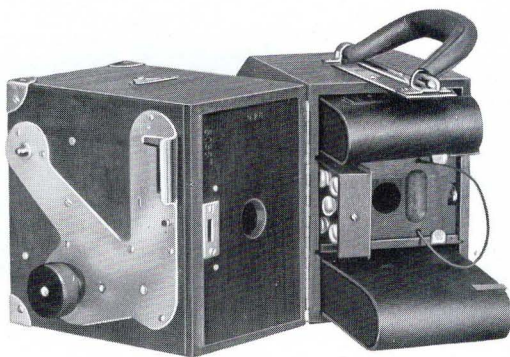
## *The* FOLMER FACTOGRAPH ---

the exposed film. When this piece of exposed film is wound off exactly, when a new and unexposed section is squarely in place, *then, and then only*, is the lever automatically released for the next exposure. The film winding apparatus and the shutter mechanism are mutually interlocking. Double exposures are impossible. There can be no blank readings, no trouble along the meter route.

When the last exposure has been made, the shutter automatically locks, warning the operator to reload and preventing further use until this has been done. Factograph film as has been said comes in the familiar roll film. It is easy to handle and can be loaded and unloaded in daylight.

As a further aid to the operator, the "Factograph" can be converted into a flashlight for locating meters or finding one's way through dark cellars by merely pressing a small button just below the exposure lever.

After the operator has finished his route, he returns the exposed films to the office for developing. This, too, is a simple process, only three minutes being required, on the average, to develop each roll. The film upon which the readings are recorded is specially coated with a sensitive emulsion which gives a sharp and permanent record. The base, itself, is of the toughest bond paper and withstands the most strenuous usage. It is made expressly for the "Factograph" at the laboratories of the Eastman Kodak Company.



*Two views of the  
Factograph showing  
its compact, sturdy  
construction.*

---

## *F o r* METER READING

---

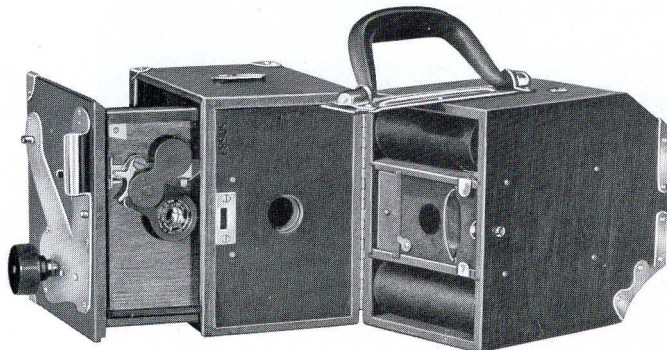
### *Operating Costs of*

### *T h e* FACTOGRAPH

Tests show that the Factograph system of meter reading has proven more economical and speedier than the older, less accurate methods. Once installed, records show that a "Factograph" reading is from fifteen seconds to a half a minute faster than the book and lead pencil way. The total time thus saved is an important factor on large routes. The Factograph also eliminates a number of incidental expenses such as: the cost of heading up readers' lists, the annual cost of flashlights and supplies, and the time spent in re-reading disputed meters, together with the subsequent adjustment of complaints. These expenses, while small for single items, mount up into sizable sums in the course of a year's time.

The goodwill and advertising value of the Factograph is not to be overlooked. Its installation is evidence of progress, an indication to the consuming public that the Service Company is continually endeavoring to make its meter reading one hundred percent perfect.

While the "Factograph" was designed originally for Gas and Electric Meters, it is equally efficient in recording other types of meters such as water meters, cash registers, taxicab meters, stitching machines, and other comptometers.



## *Developing and Fixing Tank*

The No. 1 Factograph Developing and Fixing Tanks can be purchased with the Cameras and Factograph Film. They hold three gallons of liquid developer solution. They are made of an acid proof metal which insures long use.

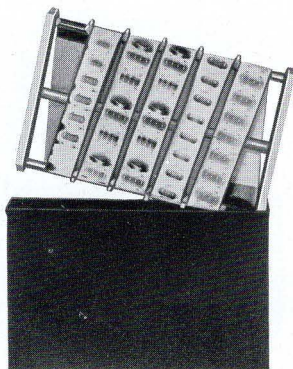
The Factograph Developing Racks are made especially to fit the Factograph Tanks. They are so constructed as to give the largest area around which the Factograph film may be wound safely, minimizing waste space and developing solution. The film is secured on these racks at each end of its length, does not overlap, cannot touch the sides of the tank, is held stationary beneath the surface of the developing solution and *remains flat*.

Once the film is wound on this rack it may be dropped into the developer,—then rinsed; dropped into the fixing bath, washed and allowed to dry,—*without being removed from the rack*. When dry, the film may be wound off onto convenient spools for billing.

A pair of Factograph Developing Rack Brackets are supplied, upon which the racks may revolve while winding or unwinding the film before and after developing.

The Tanks, the Racks and the Brackets are all so finished as to protect them from acid attacks.

*The convenient Factograph tank for developing Factograph films. Three minutes is sufficient time for the average roll.*





---

## *F o r M E T E R R E A D I N G*

---

### *Specifications and Prices*

“The Factograph” measures 12 x 4¼ x 5¾ inches. It is made from selected mahogany, brass, and aluminum in order to withstand rough usage and still be light in weight.

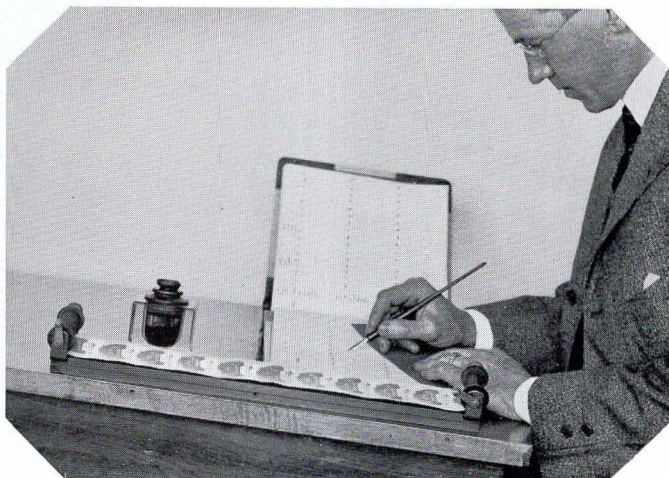
---

No. 1 Factograph Camera complete with lens, shutter, batteries and lamps . . . . .	\$56.50
No. 1 Factograph Film, carton of ten spools, 75 readings per spool, per carton . . . . .	5.60
No. 1 Factograph Developing Powder, each package sufficient for 3 gallons developer, per package . . . . .	1.70
No. 1 Factograph Fixing Powder, each package sufficient for 3 gallons fixing solution, per package . . . . .	1.55
No. 1 Factograph Dry Batteries, each . . . . .	.94
No. 1 Factograph Mazda Miniature Lamps in cartons of ten, per carton . . . . .	2.10
No. 1 Factograph Developing and Fixing Tanks, each . . . .	14.50
No. 1 Factograph Developing Racks, each . . . . .	3.80
No. 1 Factograph Developing Rack Brackets, per pair. . .	4.00

---

*The* FOLMER FACTOGRAPH

---



*Making out bills direct from Factograph Film*

THE FOLMER GRAFLEX CORP.  
ROCHESTER, N. Y.

*Makers of*  
GRAFLEX, GRAPHIC CIRKUT and  
AERIAL CAMERAS and  
STUDIO APPARATUS

