

GOERZ CAMERAS & LENSES

C. P. GOERZ
OPTICAL WORKS LTD
1-6 Holborn Circus,
London, E.C.

Telegrams: Photopsia, Smith, London.

Telephones:

Goods and Orders, 1696 Holborn.

Enquiries and General, 5929 Holborn.

COMPLETE CATALOGUE
ON APPLICATION

All prices subject to alteration
Without Notice.



The **FINEST UNIVERSAL LENS.**

THE GOERZ

“Dagor”

F. 6.8.

up to No. 7. Higher numbers F/7.7.

Highly suitable for Portraits, Groups, Instantaneous Work, and Architecture. The “Dagor” permits the use of the largest stop without diminishing the sharpness of the image at the extreme margins of the plate up to an angle of 70°. By the use of a smaller stop an angle of 90° is covered. Definition, brilliancy, and flatness of field are uniform all over the picture.

The Back combination can be used alone and has about twice the focal length of the complete lens.

Each Goerz “Dagor” supplies:—

1. A **RAPID LENS** for general purposes.
2. A **WIDE ANGLE LENS** for interiors.
3. A **LONG FOCUS LENS** for distant objects.

No.	Equiv- alent Focus.	Size of Plate sharply covered at			Price with Iris Dia- phragm.	Price in Special Focus- sing Mounts.	Price in sunk Mount for Reflex Cam- eras.
		Full aperture	F/16.	F/62.			
0000	1½	1½ × 1½	2 × 2	2 × 2½	4 15 0	—	—
000	2¾	2¾ × 2¾	2½ × 3	2¼ × 3½	4 15 0	—	—
00	3½	3¼ × 3¼	3¾ × 4¼	4 × 5	5 0 0	5 15 0	5 0 0
0	5	3¼ × 4¼	4 × 5	4¾ × 6½	5 5 0	6 0 0	5 5 0
0a	5¼	3¼ × 4¼	4 × 5	5 × 7	5 5 0	6 0 0	5 5 0
1	6	4 × 5	4¾ × 6½	5 × 8	6 5 0	7 5 0	6 5 0
1a	6½	4 × 6	5 × 7	6½ × 8½	6 5 0	7 5 0	6 5 0
2	7	4¾ × 6½	5 × 8	7 × 9	7 5 0	8 5 0	7 5 0
3	8¼	5 × 8	6½ × 8½	8 × 10	8 15 0	9 15 0	8 15 0
4	9½	6½ × 8½	7 × 9	10 × 12	10 10 0	11 15 0	10 10 0
5	10¼	7 × 9	8 × 10	12 × 15	12 15 0	—	—
6	12	8 × 10	10 × 12	16 × 18	15 5 0	—	—
7	14	10 × 12	12 × 15	18 × 22	19 15 0	—	—
7a	16½	11 × 14	13 × 17	21 × 25	26 0 0	—	—

For Stereoscopic views the lenses are accurately paired at an extra charge of 8/-.

Full Catalogue containing particulars of longer foci “Dagors,” the Hypergon Wide-Angle Lens (135° and 110°), etc., the “Pantar” Lens, etc., sent free on application.

C. P. Goerz Optical Works, Ltd., 1 to 6, Holborn Circus, London, E.C.

The LENS for Speed.

THE GOERZ

“Celor”

F. 4.5 to F. 5.5.

FOR PHOTOGRAPHY AT HIGH
SPEEDS AND IN DULL WEATHER.

This series of Lenses is especially adapted for instantaneous work of any kind, and for the shortest exposures (1/1000th of a second or less), Portraiture in the Studio or ordinary room, Lantern and Cinematograph Projection, Enlargements, Reproductions, Three-Colour Work, Telephotography, as well as for Landscapes and Architecture, and in all cases where an extremely wide angle is not required.

The apertures of the different lenses are as follows:—No. 000, F/4.5; No. 00 to No. 2, F/4.8; No. 3 to No. 5, F/5; No. 6 to No. 8, F/5.5.

The BACK COMBINATION can be used with a small stop, and has about double the focus of the complete lens.

For Stereoscopic work the Lenses can be accurately paired at an extra charge of 8/-.

No.	Equivalent Focus.	Plate Covered.		Price with Iris Diaphragm.	Price in Special Focussing Mount.	Price in Sunk Mount for Reflex Cameras.
		at full aperture.	with small stops.			
000	2 $\frac{3}{4}$	2 $\frac{3}{4}$ × 1 $\frac{1}{2}$	2 $\frac{3}{4}$ × 2	£ 4 15 0	£ 5 10 0	—
00	3 $\frac{1}{2}$	3 $\frac{1}{2}$ × 2 $\frac{1}{2}$	4 × 2 $\frac{3}{4}$	5 5 0	6 0 0	5 5 0
0	5	4 $\frac{1}{4}$ × 3 $\frac{1}{2}$	5 × 4	5 10 0	6 5 0	5 10 0
0a	5 $\frac{1}{4}$	4 $\frac{1}{4}$ × 3 $\frac{1}{4}$	5 × 4	5 10 0	6 5 0	5 10 0
1	6	5 × 4	6 $\frac{1}{2}$ × 4 $\frac{3}{4}$	6 10 0	7 5 0	6 10 0
1a	6 $\frac{1}{2}$	6 × 4	6 $\frac{1}{2}$ × 4 $\frac{3}{4}$	6 10 0	7 5 0	6 10 0
2	7	6 $\frac{1}{2}$ × 4 $\frac{3}{4}$	8 × 5 $\frac{1}{2}$	7 10 0	8 5 0	7 10 0
3	8 $\frac{1}{4}$	7 × 5	8 $\frac{1}{2}$ × 6 $\frac{1}{2}$	9 5 0	10 5 0	9 5 0
4	9 $\frac{1}{2}$	8 × 5 $\frac{1}{2}$	9 × 7	12 10 0	13 10 0	12 10 0
5	10 $\frac{3}{4}$	8 $\frac{1}{2}$ × 6 $\frac{1}{2}$	10 × 8	15 0 0	—	—
6	12	9 × 7	12 × 10	17 10 0	—	—
7	14	10 × 8	14 × 11	22 10 0	—	—
7a	16 $\frac{1}{2}$	12 × 10	16 × 14	28 15 0	—	—
8	19	15 × 12	20 × 16	33 15 0	—	—

C. P. Goerz Optical Works, Ltd., 1 to 6, Holborn Circus, London, E.C.

The INEXPENSIVE GOERZ LENS.

THE
GOERZ
"Syntor"
F. 6.8.

THE FINEST LOW-PRICED ANASTIGMAT.

The Goerz "Syntor" is a thoroughly good all-round lens, made with the same care and precision as the other series of Goerz Lenses, and giving that crispness of definition which is typical of them all. It is fast, will give good snapshots, and is excellent also for stand work. The single combinations can be used alone as long focus lenses. The "Syntor" has not quite the same covering power as the Goerz "Dagor," but more than covers the plate for which it is listed, and will allow of the rising front being used without cutting off. **A Cheap Excellent Lens for Hand-Cameras, and can be recommended with the Utmost Confidence.**

No.	Eq. Focus Inches.	For Plates Inches.	Price in ordinary mount.			Price in Special Focussing mount.			Price in sunk mount for reflex Cameras.		
			£	s.	d.	£	s.	d.	£	s.	d.
0	5	4½ × 3¼	3	5	0	4	0	0	3	10	0
oa	5¼	4½ × 3¼	3	5	0	4	0	0	3	10	0
1	6	5 × 4	3	15	0	4	10	0	4	0	0
1a	6½	6 × 4	3	15	0	4	10	0	4	0	0
2	7	6½ × 4½	4	10	0	5	5	0	4	15	0
3	8¼	7 × 5	6	5	0	7	0	0	6	10	0

The "Syntor" F/6.8 is well corrected for chromatic and spherical aberration, and for astigmatism. The angle covered at F/6.8 is 64°; by the use of smaller stops this angle can be increased to 70°. A plate having a base line equal to the focal length of the "Syntor" used is excellently covered. Where a considerable displacement of the lens from the centre is desired the next longer focus is recommended.

For Stereoscopic work the lenses can be accurately paired at an extra charge of 8/-.

C. P. Goerz Optical Works, Ltd., 1 to 6, Holborn Circus, London, E.C.

GOERZ LENSES IN SHUTTERS

The Goerz Lenses can be fitted to practically all the popular Between-Lens Shutters. Lenses up to $8\frac{1}{4}$ inches focus are usually in stock ready fitted to shutters, but in any case can be fitted in one or two days. In those cases when a charge for fitting to the camera is made, an estimate of cost will be given, if desired.

"Dagor." F/6.8.

No.	Focus Inches.	With Goerz Sector Shutter.	With Compound Shutter.	With Koilos Shutter.	With B. & L. Automat Shutter.
		£ s. d.	£ s. d.	£ s. d.	£ s. d.
0	5	—	7 0 0	7 0 0	6 10 0
0a	$5\frac{1}{4}$	—	7 0 0	7 0 0	6 10 0
1	6	—	8 0 0	8 0 0	7 10 0
1a	$6\frac{1}{2}$	—	8 5 0	8 5 0	7 10 0
2	7	—	9 5 0	9 5 0	8 10 0
3	$8\frac{1}{4}$	—	11 3 0	11 3 0	10 19 0
4	$9\frac{1}{2}$	15 0 0	13 4 0	12 18 0	12 14 0
5	$10\frac{3}{4}$	17 5 0	15 9 0	15 15 0	—
6	12a	—	18 5 0	—	—

"Celor." F/4.5—5.5.

No.	Focus Inches.	With Goerz Sector Shutter.	With Compound Shutter.	With Koilos Shutter.	With B. & L. Automat Shutter.
		£ s. d.	£ s. d.	£ s. d.	£ s. d.
0	5	—	7 10 0	7 10 0	6 15 0
0a	$5\frac{1}{4}$	—	7 18 0	7 18 0	7 15 0
1	6	11 0 0	8 18 0	8 18 0	8 14 0
1a	$6\frac{1}{2}$	11 0 0	8 18 0	8 18 0	8 14 0
2	7	12 0 0	10 4 0	9 18 0	—
3	$8\frac{1}{4}$	—	12 5 0	—	—

"Syntor." F/6.8.

No.	Focus Inches.	With Compound Shutter.	With Koilos Shutter.	With B. & L. Automat Shutter.
		£ s. d.	£ s. d.	£ s. d.
0	5	5 0 0	5 0 0	4 10 0
0a	$5\frac{1}{4}$	5 0 0	5 0 0	4 10 0
1	6	5 15 0	5 15 0	5 0 0
1a	$6\frac{1}{2}$	5 15 0	5 15 0	5 0 0
2	7	6 12 0	6 10 0	6 14 0
3	$8\frac{1}{4}$	8 13 0	8 13 0	8 10 0

Prices of "Pantars" in Between-Lens Shutters on Application.

C. P. Goerz Optical Works, Ltd., 1 to 6, Holborn Circus, London, E.C.

GOERZ LENSES TO KODAKS & OTHER CAMERAS

All Kodaks can be obtained ready fitted with Goerz Lenses, or the Lenses can be fitted to Customers' own Kodaks in a few days. Quotations for fitting on application to any dealer.

	With Compound Shutter and "Dagor."	With Compound Shutter and "Celor."	With Compound Shutter and "Syntor."
	£ s. d.	£ s. d.	£ s. d.
Vest Pocket Kodak (usual shutter)	5 15 0	—	4 15 0
No. 3 Folding Pocket Kodak ...	9 17 0	10 7 0	7 17 0
No. 3 Special Folding Pocket Kodak	10 10 0	—	—
No. 3a Folding Pocket Kodak ...	11 19 6	13 7 6	9 9 6
No. 3a Special Folding Pocket Kodak	12 14 6	—	—
No. 1 Panoram Kodak (with ordinary shutter)	8 10 0	—	—
No. 4 Panoram Kodak (with ordinary shutter)	10 0 0	—	—

Goerz Lenses can be fitted to the cameras of practically all other makers; and in the event of any difficulty arising in obtaining the Goerz Lens you are invited to communicate with us rather than to accept a substitute—an action which you would inevitably regret.

The fitting of a Goerz Lens will double the value of your camera. You will get better, brighter negatives, fewer under-exposures, and be able to obtain satisfactory exposures in dull light; nor is this all, the Definition given by the lens is such that the finest possible enlargements can be made even from tiny negatives, and the covering power such that the rising front can be used to the fullest.

C. P. Goerz Optical Works, Ltd., 1 to 6, Holborn Circus, London, E.C.

GOERZ TELEPHOTO LENSES

These Lenses are of an entirely new construction, have a definition and covering power unequalled by any other telephoto lens, and are of the greatest service for photographing subjects inaccessible to the camera with the usual lens.

The telephoto attachment consists of the negative lens and tube, prices of which follow, and these must be combined with a positive lens, generally the one in ordinary use on the camera.

COMBINATION OF			Price of Negative Lens with tube
For following Goerz or similar Lens.	Focus.	Negative Lens Focus	
<u>QUARTER-PLATE.</u>			
Dagor (F.6.8) No. 0	5	1 $\frac{5}{8}$	4 0 0
Syntor " " 0	5	1 $\frac{5}{8}$	4 0 0
Celor (F.4.8) " 0	5	1 $\frac{5}{8}$	4 5 0
Dagor (F.6.8) " 0	5	2 $\frac{3}{8}$	4 15 0
Syntor " " 0	5	2 $\frac{3}{8}$	4 15 0
Celor (F.4.8) " 0	5	2 $\frac{3}{8}$	4 15 0
<u>5 x 4.</u>			
Dagor (F.6.8) " 1	6	2 $\frac{3}{8}$	4 15 0
Syntor " " 1	6	2 $\frac{3}{8}$	4 15 0
Celor (F.4.8) " 1	6	2 $\frac{3}{8}$	5 0 0
Dagor (F.6.8) " 1	6	3	5 15 0
Syntor " " 1	6	3	5 15 0
Celor (F.4.8) " 1	6	3	5 15 0
<u>HALF-PLATE.</u>			
Dagor (F.6.8) " 2	7	2 $\frac{3}{8}$	5 0 0
Syntor " " 2	7	2 $\frac{3}{8}$	5 0 0
Celor (F.4.8) " 2	7	2 $\frac{3}{8}$	5 5 0
Dagor (F.6.8) " 2	7	3	6 0 0
Syntor " " 2	7	3	6 0 0
Celor (F.4.8) " 2	7	3	6 0 0
Dagor (F.6.8) " 2	7	3 $\frac{1}{2}$	7 0 0
Syntor " " 2	7	3 $\frac{1}{2}$	7 0 0
Celor (F.4.8) " 2	7	3 $\frac{1}{2}$	7 0 0
Dagor (F.6.8) " 3	8 $\frac{1}{4}$	3	6 5 0
Syntor " " 3	8 $\frac{1}{4}$	3	6 5 0
Celor (F.4.8) " 3	8 $\frac{1}{4}$	3	6 5 0
Dagor (F.6.8) " 3	8 $\frac{1}{4}$	3 $\frac{1}{2}$	7 5 0
Syntor " " 3	8 $\frac{1}{4}$	3 $\frac{1}{2}$	7 5 0
Celor (F.4.8) " 3	8 $\frac{1}{4}$	3 $\frac{1}{2}$	7 5 0

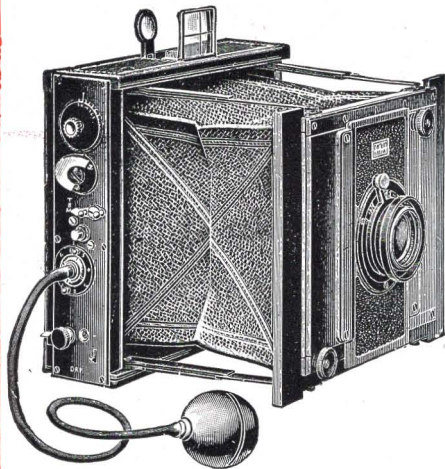
Booklet on Telephotography, 6d., post free.

C. P. Goerz Optical Works, Ltd., 1 to 6, Holborn Circus, London, E.C.

GOERZ-ANSCHUTZ

FOLDING CAMERA.

The original and still the most popular and useful of Focal Plane Cameras.



Slit altered, and all speeds adjusted from the outside.

The latest model of the Goerz-Anschutz Folding Camera is fitted with an improved form of focal plane shutter, giving speeds from 1/1200th seconds to 5 seconds, all regulated from the outside.

The shutter is self-capping, so that the plate or film is not exposed during setting. Exposures can be altered before or after shutter is set.

The camera can be fitted with Telephoto Lens and extension for use of Single Combination of Lens.

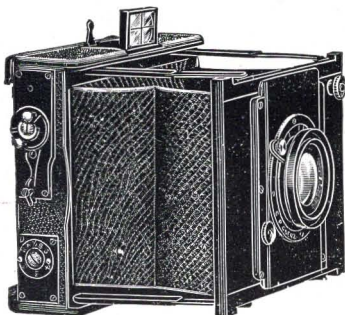
PRICE LIST.

	4½ x 3½	5 x 4	Postcard 10 x 15 cm. 5½ x 3½	6½ x 4½
	£ s. d.	£ s. d.	£ s. d.	£ s. d.
For Plates				
Goerz-Anschutz Folding Camera, complete with Goerz "Celor" Lens F/4.8, Three Double Dark Slides and Case ...	14 17 0	15 17 0	18 0 0	18 14 0
Do., do., with Goerz "Dagor" F/6.8, do.	14 12 0	15 17 0	17 0 0	18 14 0
Do., do., with Goerz "Syntor" F/6.8, do.	12 12 0	13 2 0	14 5 0	15 14 0
Extra Double Dark Slides, each	0 13 0	0 13 0	0 15 0	0 17 0
Plate Changing Box for 12 plates	2 0 0	2 0 0	2 5 0	2 8 0
Roll Holder	1 10 0	1 10 0	1 15 0	2 0 0
Film Pack Adapter...	1 0 0	1 0 0	1 5 0	1 5 0

Complete List on Application.

C. P. Goerz Optical Works, Ltd., 1 to 6, Holborn Circus, London, E.C.

GOERZ-ANSCHUTZ



Tropical and Press Camera.

Similar to the ordinary Goerz-Anschutz Folding Camera but specially adapted for Tropics and rough usage.

The Bellows is of Russian leather, to withstand the attacks of insects; special impregnated wood is used so that bending or warping is practically impossible; steel is almost entirely discarded in favour of brass and German silver, and the steel spring of the shutter is so heavily coppered and nickelled as to possess all the non-rusting properties of those two metals.

The Goerz-Anschutz Focal-Plane Shutter (Model A) is fitted, giving time and instantaneous exposures and automatic exposures from $\frac{1}{2}$ to 5 seconds. The shutter has no complicated mechanism, and in the unlikely event of repairs being needed, could be adjusted by any mechanic or handy-man.

Although primarily intended for use in trying climates, this camera, owing to its simplicity, strength, and efficiency, is largely used by the leading press photographers.

Made in quarter-plate, 5×4 , postcard, half-plate and stereoscopic.

PRICE LIST.

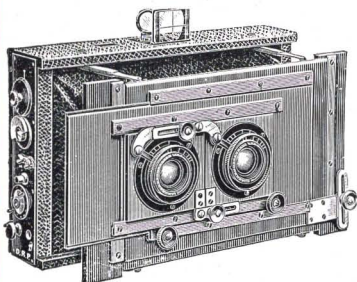
Sizes of Plates.	$4\frac{1}{4} \times 3\frac{1}{4}$ in.	5×4 in.	Postcard.	$6\frac{1}{2} \times 4\frac{3}{4}$ in.
	£ s. d.	£ s. d.	£ s. d.	£ s. d.
Goerz-Anschutz Tropical and Press Camera, complete with Goerz "Dagor" Lens f/6.8, 3 Double Dark Slides and Case	15 6 6	16 11 6	18 14 0	20 3 0
Do., do., with Goerz "Celor" f/4.8, do.	15 11 6	16 11 6	19 14 0	20 3 0
Do., do., with Goerz "Syntor" f/6.8, do. ...	13 6 6	13 16 6	15 19 0	17 3 0
Extra Double Dark Slides, each	0 15 0	0 15 0	0 17 0	0 19 6
Plate Changing Box for 12 plates	2 5 0	2 5 0	2 10 0	2 15 0
Roll Holder	1 15 0	1 15 0	2 0 0	2 5 0
Film Pack Adapter	1 2 0	1 2 0	1 7 0	1 7 0

Complete List and Prices of Stereoscopic Models on Application.

C. P. Goerz Optical Works, Ltd., 1 to 6, Holborn Circus, London, E.C.

GOERZ-ANSCHUTZ

STEREOSCOPIC CAMERA.



For Plates, Film
Packs, or Daylight
Loading Roll Films.

Camera adjusted for Panoramic Work.

The stereoscopic model of the Goerz-Anschutz Folding Camera retains all the popular features of the latter camera, and has all the adjustments essential to an instrument being used for stereoscopic work.

The separation of the lenses is variable, so that the relief in the picture can be controlled, the division is removable, and the camera is adapted for panoramic or panel work.

Apart from its utility for rapid exposures, a Focal Plane Shutter as fitted to the Goerz-Anschutz Camera has no small advantages for stereoscopic work. The extra efficiency of this type of shutter enables the worker to use his lens at stops small enough to give the required depth of focus, and yet to make instantaneous exposures. Moreover, both lenses receive exactly the same exposure.

PRICE LIST.

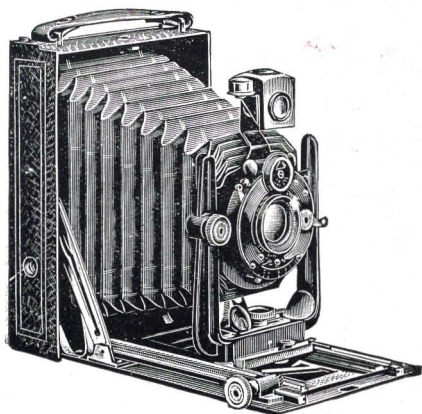
Size of Plates.	10 × 15 cm. (5½ × 3½)	6¾ × 3¼
Goerz-Anschutz Folding Camera with Goerz "Dagor" Lenses F6.8, 3 slides and case...	£ 23 10 0	£ 24 0 0
Extra Double Dark Slides, each...	0 15 0	0 17 0
Plate Changing Box for 12 Plates	2 5 0	2 8 0
Roll Holder ...	1 15 0	—
Film Pack Adapter ...	1 5 0	—

Complete Catalogue on application.

SPECIAL MODEL for TROPICS—See preceding Page.

C. P. Goerz Optical Works, Ltd., 1 to 6, Holborn, Circus, London, E.C.

GOERZ TENAX



The
"Manufoc"
and the
"Autofoc"
Tenax.

The
Pocket
Universal
Cameras.

The Goerz "Manufoc" Tenax Camera is a small elegant instrument, which in construction and design is the highest grade obtainable in this type of camera. The body is exceptionally strong, being formed of a single piece of light metal pressed up to shape. The front is a U shaped casting which is remarkably rigid. Full double extension is provided; rising and falling fronts; wide angle and telephoto lenses can be fitted. The Compound Shutter is supplied and gives exposures from 1 second to 1/250th of a second in quarter plate and 5 x 4 sizes, ("Celor" quarter plate to 1/200th), to 1/200th second in postcard, and 1/150th second in 7 x 5.

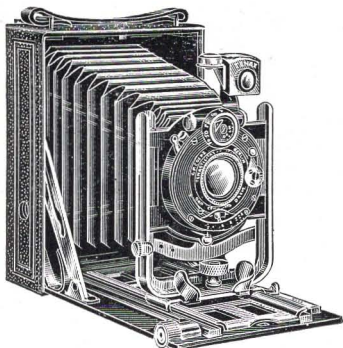
The Goerz "Autofoc" Tenax, which is made in quarter-plate only and supplied with "Dagor" and "Syntor" lenses, is similar to the "Manufoc," but has an adjustment by which the camera is automatically focussed upon infinity on opening. Price is as "Manufoc."

PRICES OF CAMERAS AND ACCESSORIES.

	4½ x 3½	5 x 4	Post Card, 5½ x 3½ and 10 x 15 cm.	7 x 5 or 13 x 18 cm.
Camera with Compound Shutter fitted with Goerz "Syntor"	£ 8 0 0	£ 9 0 0	£ 9 10 0	£ 10 15 0
Do., with Goerz "Dagor"	10 0 0	11 0 0	12 0 0	13 10 0
Do., do., "Celor"	10 10 0	—	—	14 10 0
Film Pack Adapter ...	0 8 0	0 10 0	0 12 0	0 15 0
Single Slides, each ...	0 2 3	0 2 9	0 3 0	—
Double Dark Slides, each	0 11 0	0 12 0	0 13 0	0 16 0
Wide-Angle Lens.....	5 5 0	5 5 0	5 10 0	5 10 0
Telephoto Attachment..	4 15 0	4 15 0	5 15 0	7 5 0
Leather Case	0 7 6	0 7 6	0 10 0	0 15 0

C. P. Goerz Optical Works, Ltd., 1 to 6, Holborn Circus, London, E.C.

GOERZ TARO TENAX



**A GOERZ CAMERA
WITH
GOERZ LENS
FROM
£5 15 0**

The body of the "Taro Tenax" is pressed out of a single sheet of metal, and has a front solid and rigid of U form. Full double extension. Accurate and reversing finder, fitted with level.

Fitted with Goerz "Dagor" F/6.8, or with the "Tenastigmat" F/6.8, an anastigmat excellent in quality and performance, but simple in construction, and so enabling the whole outfit to be produced at a popular price.

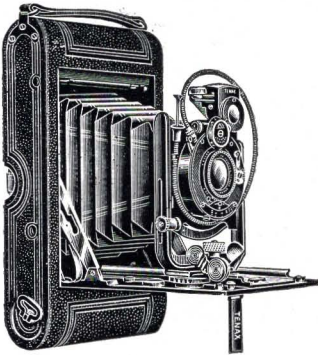
The "Taro" is fitted with the Compound Sector, or the Ibsco Shutter. For value, practical points, excellence of finish, perfection of design, general suitability for every kind of work, and the wonderful performance of the lenses fitted, the "Taro" is unequalled by any camera selling at a similar price.

PRICES.

	Quarter-plate. Postcard.	
	£ s. d.	£ s. d.
Goerz "Taro" Tenax with Goerz "Dagor" Lens and Compound Shutter	9 0 0	—
Goerz "Taro" Tenax with "Dagor" and Ibsco Shutter	8 10 0	—
Goerz "Taro" Tenax with Tenastigmat Lens and Compound Shutter	6 5 0	7 2 6
Goerz "Taro" Tenax with Goerz Tenastigmat Lens and Ibsco Shutter	5 15 0	7 17 6
Film Pack Adapter	0 8 0	0 12 0
Single Slides, each	0 2 3	0 3 0
Double Dark Slides, each	0 11 0	0 13 0
Leather Case, ordinary quality	0 7 6	0 10 0
Wide-Angle Set (consisting of Goerz "Dagor" for wide-angle work, in case)	5 5 0	5 10 0
Telephoto Attachment	4 15 0	5 15 0

C. P. Goerz Optical Works, Ltd., 1 to 6, Holborn Circus, London, E.C.

GOERZ ROLL FILM TENAX



At once a Roll-film Camera de Luxe, and one sold at a popular price. Needs only examination for its advantages to become apparent.

Rich, but chaste in appearance, every feature of the instrument shows the care and skill lavished upon its manufacture. The body is strong, the front is exceptionally firm and absolutely rigid. It is fitted with rising fronts both ways. The rails on the base are continuous with those in the body of the camera, and the front, consequently, can always be drawn out with a most agreeable smoothness.

Special attention has been devoted to the finder, which gives a large, brilliant and accurate view. Attached to it is a level. Compound and Ibsco Shutters are fitted.

Made in **Single and Double Extension.**

PRICES OF CAMERAS.

Cameras fitted with Compound Shutters.	Quarter-plate.		Postcard.	
	£	s. d.	£	s. d.
With Goerz "Dagor"	10	5 0	12	0 0
" " "Celor"	10	15 0	12	10 0
" " "Tenastigmat"	7	10 0	8	15 0
Combined Back for Plates and Focussing Screen	0	9 0	0	10 0
Single Dark Slides for Plates	0	2 3	0	3 0
Film Pack Adapter	0	8 0	0	10 0
Case for Cameras	0	7 0	0	7 6
Flush Back for Cameras fitted with Combined Back	0	4 0	0	4 6

Cameras with Double Extension, 10/- extra; Cameras with Ibsco Shutters, Quarter-plate, 10/- less, except with "Celor" when 15/- less; Postcard, 15/- less.

C. P. Goerz Optical Works, Ltd., 1 to 6, Holborn Circus, London, E.C.

GOERZ Vest-Pocket TENAX



No Bother.

No Trouble.

Two Models

For Single View and
Stereoscopic Pictures.

Taking plates $4\frac{1}{2} \times 6$ cm ($1\frac{3}{4} \times 2\frac{5}{16}$) the Vest Pocket Tenax is a thoroughly practical little instrument. Fitted with a shutter with speeds from 1 to 1/250th second and the Goerz Lens, and focussing adjustment, the camera can, owing to its size, be made a constant companion and be carried on occasions when a larger camera must of necessity be left behind. The results are of surprising sharpness, and although contact prints can, of course, be made, most of the users of the camera will adopt the Vest Pocket Tenax Enlarger, by which prints up to 7×5 can be produced with the same ease as direct prints, and with practically equal sharpness.

Both Cameras can be used as fixed focus cameras when all objects from 15 feet to infinity are rendered perfectly sharp.

The **Stereoscopic V.P.T.** is an exactly similar camera, giving negatives perfect for the stereoscope, and so sharp that they are capable of enlargement to very considerable dimensions. For single lens work it is the equivalent of the Vest-Pocket Tenax, with the added advantage of being adapted for stereoscopic work. Size of plate or film, 45×107 mm. (about $1\frac{3}{4} \times 4\frac{1}{4}$ ins.).

PRICES.

	V.P.T.	Stereo. V.P.T.
	£ s. d.	£ s. d.
Camera with Goerz "Dagor," for six plates ...	10 15 0	18 10 0
Do., without slides, but with Film Pack Adapter...	10 12 0	17 8 0
Camera with Goerz "Celor" F/4.5, for six plates...	11 0 0	18 10 0
Do., without slides, but with Film Pack Adapter...	10 17 0	17 8 0
Camera with Goerz "Syntor," for six plates ...	8 5 0	15 0 0
Do., without slides, but with Film Pack Adapter...	8 2 0	13 18 0
TROPICAL MODEL. Extra	0 10 0	0 15 0
Film Pack Adapter	0 15 0	0 8 0
Goerz "V.P.T." Automatic Enlarger	4 10 0	4 15 0
Daylight Enlarger	2 0 0	—

C. P. Goerz Optical Works, Ltd., 1 to 6, Holborn Circus, London, E.C.

GOERZ C.D.V. TENAX

A similar camera to the Goerz Vest Pocket Tenax, but taking a plate or film $3\frac{1}{2} \times 2\frac{1}{2}$ in. (Carte de Visite size), fitted with shutter giving exposures from 1 second to $1/250$ th, a focussing adjustment (fixed focus by setting to a point), and the Goerz Lens. It is a practical camera of extreme portability and elegance. Enlarged prints are easily made by the Enlargers.



**For
Plates
or
Films.
 $3\frac{1}{2} \times 2\frac{1}{2}$ in.
Carte
de
Visite
size.**

PRICES.

	£	s.	d.
Camera with Goerz "Dagor" F/6.8 and three double dark slides, in case	13	0	0
Do., without slides, but with Film Pack Adapter	12	4	0
Camera with Goerz "Celor" F/4.5 and three double dark slides, in case	13	5	0
Do., without slides, but with Film Pack Adapter	12	9	0
Camera with Goerz "Syntor" F/6.8 and three double dark slides, in case	11	0	0
Do., without slides, but with Film Pack Adapter	10	4	0
TROPICAL MODEL. Extra charge for this Model	0	10	0
Extra Double Dark Slides, each	0	8	0
Film Pack Adapter	0	8	0
Goerz C.D.V. Automatic Enlarger for prints 7×5 inches, with one single slide	5	0	0
Daylight Enlarger	2	10	0

Complete Catalogue on Application.

C. P. Goerz Optical Works, Ltd., 1 to 6, Holborn Circus, London, E.C.

GOERZ TENAX-PACK

Daylight loading
& unloading.
Twelve Films.
Orthochromatic.
Extra rapid emulsion.
Non-Curling.
Good keeping qualities.
Films Perfectly Flat.
Exposed films easily
removed

THE FILM WHICH IS FLAT

PRICES PER PACK OF 12 FILMS.

4½ × 6 cm (Vest-Pocket Tenax Size)	1/5
3¼ × 4¼ inches	3/-
9 × 12 cm	3/9
10 × 15 cm	4/6

C. P. Goerz Optical Works, Ltd., 1 to 6, Holborn Circus, London, E.C.