

# ENSIGN

AND OTHER  
CAMERAS

1912

# ENSIGN

AND OTHER  
CAMERAS



1912

G. GENNERT

NEW YORK  
24-26 EAST 13th STREET

CHICAGO  
320 SOUTH WABASH AVENUE



# ENSIGN CAMERAS

NEW YORK G. GENNERT CHICAGO

## E N S I G N

---

Since the introduction of "Ensign" Film to the American Public in 1905 there has gradually gathered about this trade mark name a reputation for quality and dependence until the trade mark at this day is a Hall-mark of quality, a synonym for excellence, jealously guarded and conscientiously preserved. When a dealer offers to supply something just as good as "Ensign" this fact should be remembered and the purchaser will do well to insist on

**"ENSIGN"**

**The Hall-mark of Quality**

---

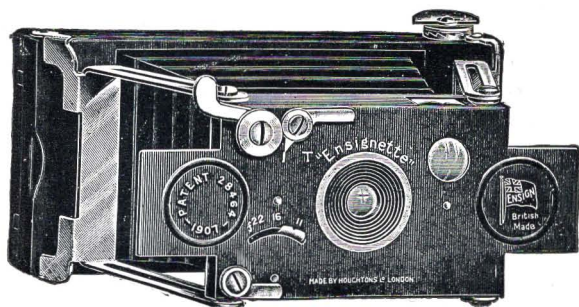
*Sold by All Independent Dealers*

# ENSIGN CAMERAS

NEW YORK

G. GENNERT

CHICAGO



Open

## The "Ensignette"

A WONDERFUL AND PERFECT LITTLE FOLDING CAMERA  
FOR DAYLIGHT LOADING ROLL FILMS

THE "Ensignette" is the smallest camera that will make perfect photographs and is so perfect in design and workmanship that it never fails to please either in appearance or results.

This entirely original and dainty little pocket camera is new in size, shape, design and results. Made of metal (except the bellows), beautifully finished (dead black with nickeled trimmings), it delights everyone. It opens by a single motion to a fixed focus and locks in position for instant use. When closed it measures only  $1\frac{1}{8} \times 3\frac{1}{8} \times \frac{3}{4}$  in. and readily fits the vest pocket or a lady's purse.

Daylight loading with 6 exposure film spools of Austin Edwards' celebrated Double Instantaneous, Non-Curlable, Orthochromatic film. The "Ensignette" makes perfect little gems of pictures,  $1\frac{1}{2} \times 2\frac{1}{4}$  inches, which by a new method of printing are enlarged to  $3\frac{1}{4} \times 5\frac{1}{2}$  (post card) size in the Ensign Enlarging Box; which means in reality that this wonderful little "Ensignette" Vest Pocket Camera produces post card pictures.

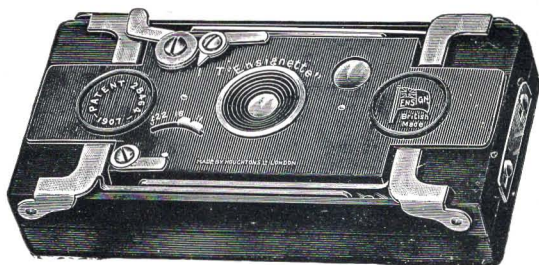
"Ensignette" Picture Making is picture making without the camera carrying inconvenience, without the dark room inconvenience, in fact, without any inconvenience whatever. It is photography idealized.

The Beautiful Post Card size,  $3\frac{1}{4} \times 5\frac{1}{2}$ , Pictures which can be printed from the "Ensignette" films in the "Ensignette" Printing Box are a great added attraction which must not be overlooked.



# ENSIGN CAMERAS

NEW YORK G. GENNERT CHICAGO



Closed

## The "Ensignette"

A SELF-CONTAINED, FOLDING CAMERA  
SLIPS INTO THE VEST POCKET, CASE AND ALL

THE Wonderful Little "Ensignette" is fitted with an imported Rapid Achromatic Meniscus Lens having adjustable diaphragm openings of F. 11, 16, 22 and fitted behind an automatic shutter of just the right speed for instantaneous pictures; time exposures may also be made by a separate lever control.

*Brilliant Finder* shows plainly either horizontal or vertical picture just as the lens will place it upon the film which is wound in place by means of a small winding key while through a small circular red window in the back the number of the film becomes plainly visible as the film is reeled into place. An auxiliary reversible *Direct Finder* is supplied at a slight extra charge for those who have become accustomed to this type.

*Construction and Finish.* The camera is beautifully made of non-corrosive metal throughout and except for the struts and trim, is finished a dead black, lending a beautiful appearance in contrast to the red leather bellows and polished nickeled trimmings which give the camera withal an undeniable touch of elegance. Full nickel finish may be had at a slight extra charge if preferred.

The "Ensignette" slips into a black leather case (included) but may be had in genuine English hand-sewn Pigskin case (extra).

*For Ladies' Use* a special wrist-bag case, much like a purse, is supplied (extra)—a most convenient and unobtrusive means of carrying the camera; a compartment for an extra roll of film and one for visiting cards make this case most complete. If desired, film-cases holding 3 rolls of film may be had to match. These Ladies' Sets are to be had in Pigskin Black, Green or Blue imported leathers.

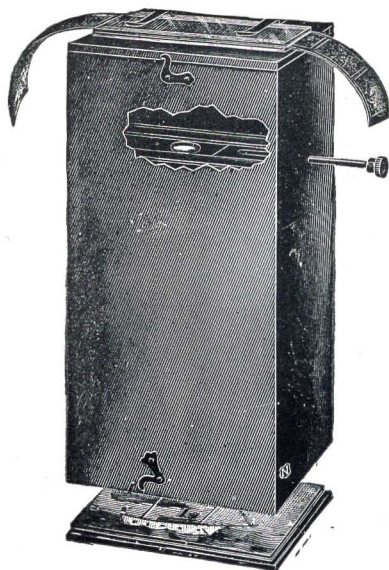


### Price List

"Ensignette" Camera, Regular Equipment No. 1.....	\$ 8.00
" " Full Nickel-Finish.....	10.50
" Film No. 1, per Spool .....	.20
" Brilliant Direct Finder No. 1 .....	.75
" No. 1 Solid Hand-Sewn Pigskin Case .....	1.25
" No. 1 Ladies' Wrist Bag Case .....	2.50
" No. 1 Film Case to match .....	1.00

# ENSIGN CAMERAS

NEW YORK G. GENNERT CHICAGO



## The "Ensignette" Printing Box

With the "Ensignette" Printing Box—a *fixed focus enlarger*, specially made for the "Ensignette" films—automatic enlargements, Post-Card size,  $3\frac{1}{4} \times 5\frac{1}{2}$  in., can be made—in other words, with the assistance of this apparatus, full size Post-Card pictures can be produced with a camera that fits the vest-pocket. Anyone that can develop a print can use this Printing Box successfully as it is as simple as a contact printing frame, requiring only that one should ascertain the correct exposure according to the speed of the paper.

### Price

No. 1 "Ensignette" Printing Box, complete, with instructions .....	\$2.00
No. 2 "Ensignette" Printing Box.....	2.75

## The "Ensignette" Developing Tank

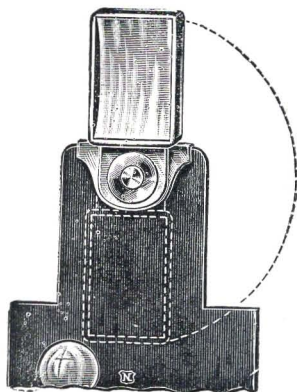


With this Developing Tank films can be developed in daylight. It is constructed on an entirely new and simple plan entirely of brass, heavily nickelled. It is a most economical tank—only requiring 5 ozs. of developer to fill it. Full directions accompany each tank.

### Price

For No. 1 "Ensignette" Film, \$2.50	For No. 2 "Ensignette" Film \$4.00
-------------------------------------	------------------------------------

## The "Ensignette" Direct View Finder



"Ensignette" Finder

This Direct View Finder may be used for either upright or oblong pictures—it clips on the lens front, as illustrated, and when not in use can be pushed down as shown by the dotted lines; it is best not to remove the finder once it is clipped into position. The view in the finder will be the same as that included by the lens for distant objects, but for objects nearer than six yards away from the camera due allowance must be made for the fact that the finder is two inches higher or two inches to the side of the lens.

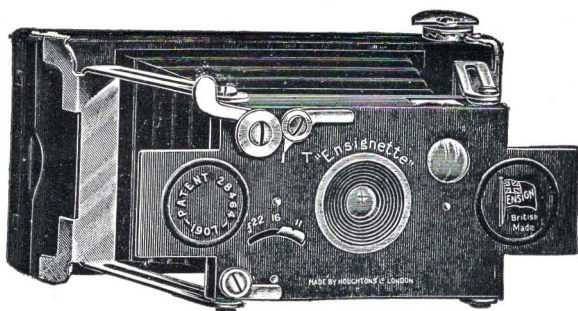
### Prices

For No. 1 "Ensignette" .....	\$0.75
For No. 2 "Ensignette" .....	1.00



# ENSIGN CAMERAS

NEW YORK G. GENNERT CHICAGO



Open

## The "Ensignette" No. 2

FOR PHOTOGRAPHS 2x3 In. DIMENSIONS  $2\frac{3}{8} \times 5 \times \frac{3}{4}$  In.

FOR those who prefer a somewhat larger picture, the "Ensignette" No. 2 has been added. Constructed on the same lines but more generous proportions, it makes pictures 2x3 inches and it also

### FITS THE VEST POCKET

The *Lens* is the same excellent quality of imported Rapid Achromatic Meniscus and is fitted with a newly designed diaphragm plate permitting of opening F. 11, 16, 22.

The *Shutter* is the same Automatic design, giving ample exposure on snap-shots and having time escapement attached to the same lever as the Instantaneous. In this respect it differs from the No. 1 model.

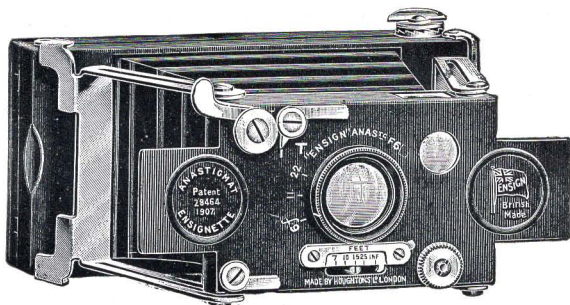
The materials and finish are the same as the No. 1 "Ensignette," except that the nicked diaphragm ring around the lens opening lends an added touch of attractiveness to its appearance.

### Price List

"Ensignette" No. 2, complete in Case.....	\$12.00
" No. 2, Full Nicked Finish.....	15.00
" Film No. 2, per spool.....	.25
" Brilliant Direct Finder No. 2 .....	1.00
" Solid Hand-Sewn Pigskin Case No. 2....	1.75
" Ladies' Wrist Bag Case No. 2.....	3.50
" Ladies' Film Case for 3 Rolls No. 2....	1.25

# ENSIGN CAMERAS

NEW YORK G. GENNERT CHICAGO



## The "Ensignette" Special

With Anastigmat Lenses

A SPECIAL MODEL WITH FOCUSING ATTACHMENT

**D**UE to insistent demand from advanced amateurs appreciating the wonderful compactness and adaptability of the "Ensignette," this Special Focusing Model was introduced and is offered so constructed with focusing device as to permit of special lenses which, by reason of greater speed and added brilliancy (so justly attributed to the Anastigmat type of lens), would produce results aimed at by those who seek the higher perfection of picture making.

It is a fact well recognized by all who can afford the higher cost and are familiar with photography that these high grade Anastigmat equipments offer advantages over the ordinary fixed focus type.

Anastigmat Lenses cover the entire field with even illumination and microscopic definition at larger apertures and, where pictures are to be made under trying conditions or are to be considerably enlarged, the Special "Ensignette" will no doubt be preferred.

With the Special "Ensignette" equipment pictures can be made that will permit of successful enlargement up to 16x20 or even larger, where perfect enlarging apparatus is used.

*The Focusing Adjustment* is very simple and effective—a milled wheel adjustment, projecting slightly over the edge of the camera front, need only be turned back or forward to move the sliding indicator directly underneath the lens (and actuated with it) to the proper distance as marked on the scale opposite the indicator; the adjustment is rapid and accurate.

### Prices of Special Equipments

In submitting these prices for special equipments attention is called to the fact that in each case the imported lens made at the factory of Cooke—London, Goerz—Berlin, or Zeiss—Jena, is included in the price. No American-made lenses are offered.

"Ensignette" Anastigmat Equipment with			
F. 6 Anastigmat .....	No. 1 N	\$25.00	No. 2 N \$35.00
"Ensignette" Anastigmat Equipment with			
Cooke Anastigmat Ser. IV, F. 5.8. ....	No. 1 B	35.00	No. 2 B 47.50
"Ensignette" Anastigmat Equipment with			
Goerz Syntor F. 6.8. ....	No. 1 G	40.00	No. 2 G 52.50
"Ensignette" Anastigmat Equipment with			
Zeiss-Tessar F. 6.8 .....	No. 1 Z	48.00	No. 2 Z 60.00



# ENSIGN CAMERAS

NEW YORK

G. GENNERT

CHICAGO



## The "2 1/4 In. Ensign"

BOX FORM MODEL

TAKES PICTURES  $2\frac{1}{4} \times 3\frac{1}{4}$  In. DIMENSIONS  $3\frac{1}{2} \times 4\frac{1}{2} \times 5\frac{1}{2}$  In.

*Camera.* Thoroughly well constructed of seasoned wood with working parts and adjustments of metal. This camera will appeal to the buyer who appreciates honest value. The *novel* feature of withdrawing the entire spool winding apparatus from the outer case makes the camera easy to understand, to load, to operate. This London-made camera is so superior to other cameras of similar type that the price must strike the purchaser as *extremely reasonable*.

*Covering* of *water-proof* material closely resembling morocco grained leather, durable and a protection against weather. Solid leather handle.

*Fittings.* The winding key is nicked and polished, all other fittings of solid oxidized metal.

*Lens.* Extra large and powerful imported Achromatic Meniscus of excellent covering power.

*Shutter.* *Everset* Time and Instantaneous.

*Stops.* Three sliding stops.

*View Finder.* Ground glass type built into the camera, rectangular form corresponding with shape of picture, one for upright, another for oblong pictures.

This camera uses film spool known as Ensign Film  $2\frac{1}{4}$  B.

### Prices

2 1/4 In. Ensign Camera with Instruction Book.....	\$2.50
Ensign Portrait Attachment .....	.50
Complete Developing and Printing Outfit.....	1.00
Black Solid Leather Case.....	1.00

# ENSIGN CAMERAS

NEW YORK G. GENNERT CHICAGO



## The "2½ in. Ensign"

BOX FORM MODEL

TAKES PICTURES 2½ x 4¼ In. DIMENSIONS 5⅞ x 6¾ x 3¾ In.

*Camera.* Thoroughly well made of selected, seasoned wood with metal trimmings. All metal parts oxidized, except winding key, which is nicked and polished. Novel in construction and exceedingly easy to load, the whole of the spool winding mechanism being withdrawn from the outer case with the side of the camera, thus greatly simplifying this operation and permitting intimate acquaintance with the mechanical construction. The strength and solidity of this London-made camera is superior and places this London-made camera in a class by itself.

*The Covering* is of excellent *water-proofed* material having a grain similar to leather, very durable, and an efficient protection against weather. Solid leather handle.

*The Lens.* Extra large and powerful, illuminating the plate evenly at small opening. Imported Achromatic Meniscus type.

*Stops.* Three in number.

*Shutter.* Everset Time and Instantaneous.

*View Finder.* Two ground glass finders of rectangular form for upright and oblong pictures.

*Tripod Plates.* Two in number.

This camera uses film spool known as Ensign Film 2½ in.

### Prices

2½ in. Ensign Camera with Instruction Book.....	\$3.50
“ “ Portrait Attachment.....	.50
“ “ Developing and Printing Outfit.....	1.50
Solid Leather Case with Shoulder Strap.....	1.25
Ensign Double Instantaneous Film Spools—6 exposure, 25c.;	
12 exposure, 50c.	



# ENSIGN CAMERAS

NEW YORK

G. GENNERT

CHICAGO



## The "3 1/4 In. Ensign"

BOX FORM MODEL

TAKES PICTURES 3 1/4 x 4 1/4 In. DIMENSIONS 4 3/8 x 5 3/4 x 6 3/4 In.

**Camera.** This camera is thoroughly made and beautifully finished. The well-seasoned material, carefully selected and put together in true London style, makes it a very attractive camera at a very moderate price. The *novel* feature of lifting out the entire film-reeling apparatus with the side of the camera greatly facilitates proper loading of the film and admits of easy access to clean the lens and inspect the mechanism. This camera is the superior of others of its size sold at higher prices.

**Covering.** This camera is covered with an excellent quality of *water-proof* material having a grain closely resembling leather, a most durable and efficient protection against the weather. A solid leather handle is attached by which the camera may be carried when used without its case.

**The Lens.** An excellent and *unusually large* and *powerful* Imported Achromatic Meniscus Lens, capable of covering the full size of the film and illuminating it with unusual brilliance; supplied with Revolving Diaphragm.

**Stops.** Three in number, suited to pictures having dull, medium and strong light.

**Finders.** Two in number, of the new *Brilliant* type. Show the picture as it will appear upon the film when the exposure is made and in connection with the

**Tripod Sockets** enable the purchaser to use the camera for upright or oblong pictures at will.

**The Shutter.** Suited to use for both time and instantaneous exposures, is extremely simple of construction and is not likely to cause trouble or impair the efficiency of the camera by getting out of order.

This camera uses film spools known as 3 1/4.

### Prices

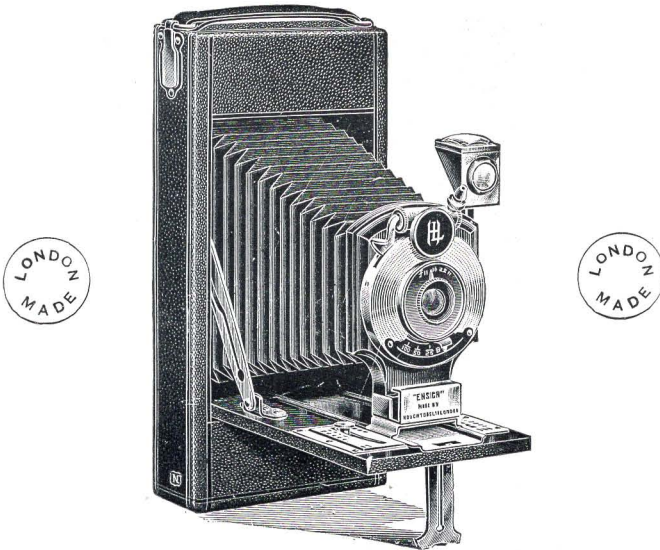
3 1/4 in. Ensign Camera, complete with Instruction Book.....	\$6.00
Portrait Attachment .....	.50
Developing and Printing Outfit .....	1.50
Solid Leather Case with Shoulder Strap .....	1.50
Ensign Double Instantaneous Film Spools—6 exp., 35c.; 12 exp.....	.70

# ENSIGN CAMERAS

NEW YORK

G. GENNERT

CHICAGO



## The "2 1/4 In. Folding Ensign Jr."

FOR PICTURES 2 1/4 x 3 1/4 In. DIMENSIONS 3 x 7 x 1 1/2 In.

THESE London-made Junior Folding Cameras have been especially designed for the American market and the symmetry of design, compactness and general excellence of material and workmanship will appeal to the discriminating buyer.

Made of carefully selected and well seasoned wood, ebony finished throughout in contrast to the polished nickel trimmings, the black leather bellows and the black leatherette covering of the camera itself, the whole makes a most pleasing and substantial impression.

*The Shutter*—of acknowledged excellence and patented American construction has been selected because of its simplicity and reliability. It is capable of time, bulb and instantaneous exposure. All of equal accuracy.

*The Lens.* Achromatic Meniscus carefully constructed and fitted with Iris Diaphragm capable of speedy adjustment to the various desired openings.

*The Special Infinity Catch* — by which the camera can at once be set at universal focus and used instantly—is a feature of this camera.

*Engraved Focus Scale*, which supplements the Infinity Catch when more accurate focusing is permitted.

*The Finder.* Brilliant and Reversible fitted at the outside of the Lens.

*The Tripod Sockets.* Two in number, for upright and oblong pictures.

All these features combine to make this a most desirable yet popular priced camera.

This camera uses Film Spool known as 2 1/4 B.

### Prices

Ensign Jr. 2 1/4 in. camera, complete with Instruction Book .....	\$7.00
Portrait Attachment .....	.50
Developing and Printing Outfit .....	1.00
Sole Leather (Black) Case and Strap .....	1.15
Ensign Double Instantaneous Film Spools, 2 1/4 B, 6 exposure .....	.20

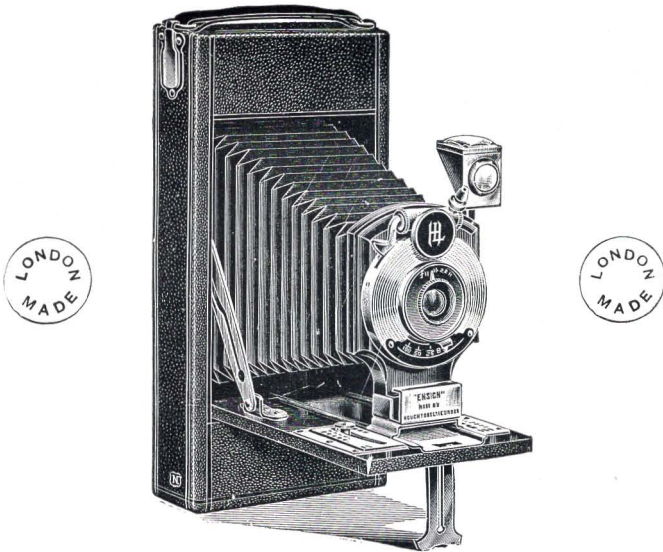


# ENSIGN CAMERAS

NEW YORK

G. GENNERT

CHICAGO



## The "2½ In. Folding Ensign Jr."

FOR PICTURES 2½ x 4¼ In. DIMENSIONS 4x8x2 In.

**T**HIS camera, like the foregoing model, opens the long way like the most expensive Pocket Cameras. The same care in selecting the materials from which it is made, combined with the ebonized finish and polished nickel trimmings, will tend to popularize it with those who choose this size of picture.

The workmanship, design and efficiency of this London-made camera instantly appeal to the buyer.

*The Lens.* Carefully made for this particular camera by one of Rochester's leading opticians, is the best type of Achromatic Meniscus Lens composed of two lenses cemented together.

*The Shutter.* Made for this camera so as to secure symmetry of design and finish, is the well and favorably known Time, Bulb and Instantaneous type capable of any desired exposure.

*The Finder.* Attached at the outside of the lens, is reversible and accurate.

*The Tripod Plates.* Two in number, permit of the camera being used on a tripod for upright or oblong pictures.

*Engraved Focusing Scale.* Makes accurate focusing easily possible without the aid of a ground glass.

*The Special Infinity Catch.* A feature of this camera; fits it for rapid adjustment to quick snapshots.

*The Bellows.* Are of the best quality of leather.

*The Covering.* Is black leatherette and a black solid leather handle is attached to the short end of the camera for use when carrying it without a case.

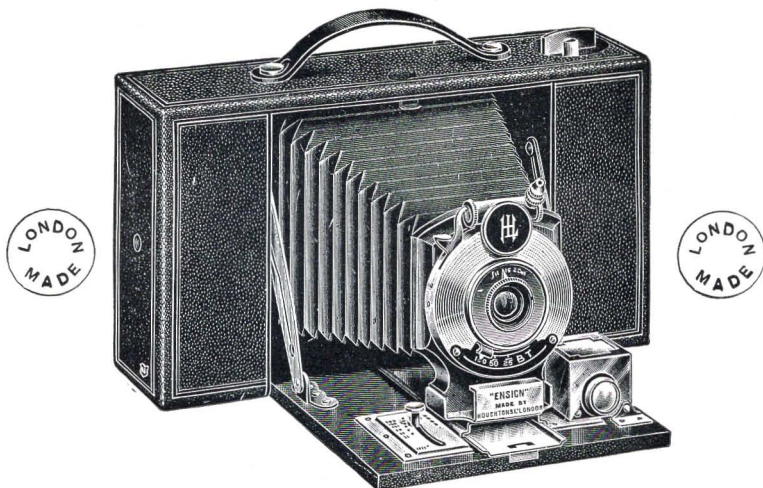
This camera uses Film Spools known as 2½ in.

### Prices

2½ in. Ensign Jr. Camera, complete with Book of Instructions.....	\$9.50
Portrait Attachment for making portraits at 3 feet .....	.50
Developing and Printing Outfit .....	1.50
Black Leather Case and Straps .....	1.25
Ensign Double Instantaneous Film, per spool of 6 exp., 25c.; 12 exp...	.50

# ENSIGN CAMERAS

NEW YORK G. GENNERT CHICAGO



## The "3 1/4 In. Folding Ensign Jr."

FOR PICTURES 3 1/4 x 4 1/4 In. DIMENSIONS 4 7/8 x 8 3/8 x 2 1/2 In.

*Camera.* Thoroughly well made of seasoned wood with folding baseboard upon which are mounted the focusing scale and infinity catch. Covered outside with the finest quality of Morocco grained leatherette. The struts and fittings are nicked and highly polished. Bellows and handle for carrying of black leather.

*Lens.* Finest quality of Achromatic Meniscus of excellent covering power or Rapid Rectilinear.

*Shutter.* The well known Time, Bulb and Instantaneous model, finished to match the camera having Iris Diaphragm.

*Finder.* Reversible with spring fitting.

*Infinity Catch.* Of improved design not limited in its scope but so constructed that it can be readily adjusted to fit the camera front at any desired focus.

*Tripod Screws.* Plates for both upright and oblong pictures are supplied.

This camera uses Film Spools known as 3 1/4 in.

### Prices

3 1/4 in. Folding Ensign Jr., Achromatic Lens, complete with Instruction Book .....	\$10.00
3 1/4 in. Folding Ensign Jr., R. R. Lens, complete with Instruction Book .....	12.00
Portrait Attachment .....	.50
Developing and Printing Outfit .....	1.50
Black Solid Leather Case and Strap .....	1.50
Ensign Double Instantaneous Film Spools, 6 exp. ....	.35
12 exp. ....	.70

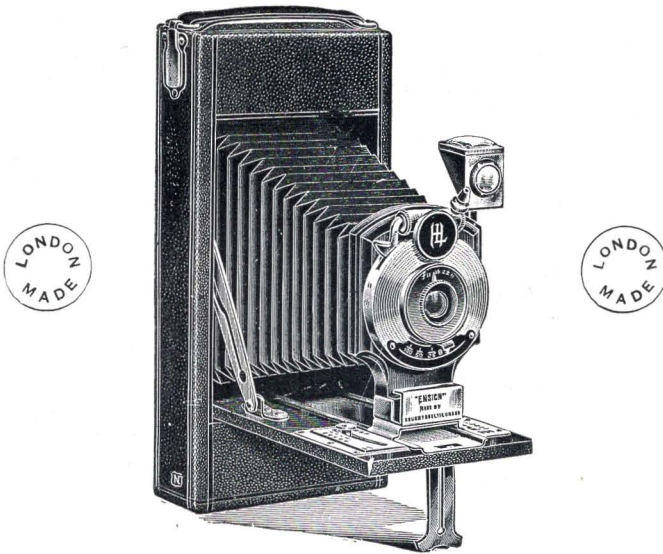


# ENSIGN CAMERAS

NEW YORK

G. GENNERT

CHICAGO



## The "3¼A Folding Ensign Jr."

FOR POST CARD PICTURES 3¼ x 5½ In.

*Camera.* This beautiful London-made Post Card Camera will compare favorably with models offered at much higher prices. Thoroughly well made of carefully selected, well seasoned wood, baseboard folding the long way of camera on which are mounted the Infinity Catch and Focus Scale. This baseboard covered, in harmony with the outside of the camera, in fine grained leatherette. The trimmings of the camera, including the Finder and Infinity Catch, are nicked and highly polished.

*The Lens.* A selection is given below of R. R. type working at F. 11 or the *Extra Rapid Symmetrical* working at F. 8.

*The Shutter* is the well known Time, Bulb and Instantaneous pattern but the camera will be supplied with Automatic shutter having all speeds, from time to  $\frac{1}{100}$  of a second, at a slight additional charge. Both shutters have Iris Diaphragm.

*View Finder.* Real *Brilliant*, reversing, with spring fitting, protecting it against misplacement.

*Infinity Catch.* Of improved design, so constructed that it can be readily adjusted to fix the camera front at any point from 3 feet to infinity.

*Tripod Screws.* Two tripod plates are supplied so camera may be used on a tripod for upright or oblong pictures.

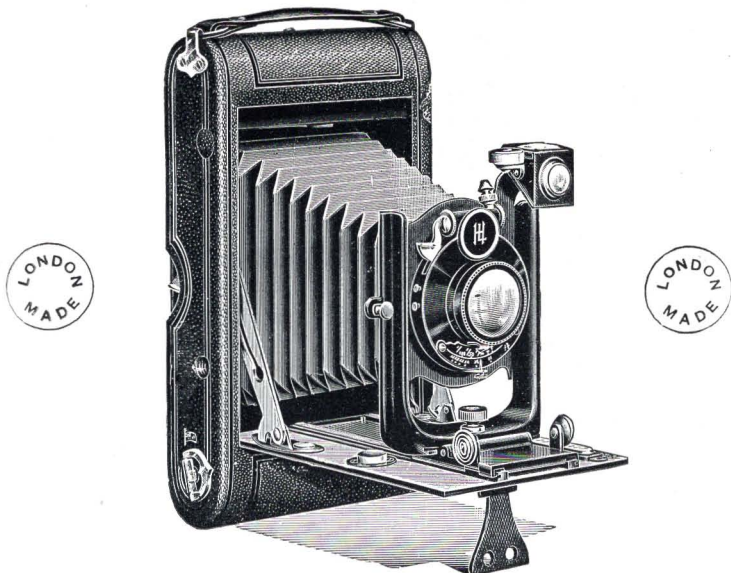
This camera uses Film spool known as 3¼ A.

### Prices

3¼ A Post Card Ensign Jr. Camera, fitted with R. R. Lens, complete with Book of Instructions .....	\$12.00
Post Card Ensign Jr. Camera, fitted with Rapid Symmetrical Lens, complete with Instruction Book .....	15.00
Developing and Printing Outfit .....	1.50
Portrait Attachment .....	.50
Black Solid Leather Case, with Shoulder Strap .....	1.50

# ENSIGN CAMERAS

NEW YORK G. GENNERT CHICAGO



## The "3 1/4 In. Folding Ensign"

*Camera.* A beautifully made model of the all metal U-shaped front design which is the acknowledged "De Luxe" type of modern folding cameras. Strongly constructed with extension front of frosted aluminum nickel trimmed; rising, falling and shifting front cast in V shape of aluminum which, in conjunction with the hinged sliding carriage, ensures absolute rigidity. The front is simply drawn forward when the camera is opened and fixed automatically at infinity. Removable back panel, flush with camera, may be withdrawn to admit of focusing. *A complete and perfect plate camera and also a perfect roll film camera of the latest design.*

*Bellows and Covering* are of the best black leather.

*Lens.* Extra Rapid Symmetrical working at F. 8.

*Shutter.* The well known and perfect automatic type with Iris Diaphragm, valves inside the cover giving uniform exposures from  $\frac{1}{100}$  to 1 second, also time and bulb. Not likely to get out of order. Pneumatic ball and tube or Antinous release.

*View Finder.* Real Brilliant reversible with level, all attached at the outside of lens.

*Focusing Scale.* Showing objects in focus up to 5 feet, for plates or films.

*Infinity Catch.* Adjustable for plates or films from 5 feet to infinity.

*Tripod Plates.* Two for oblong or upright use.

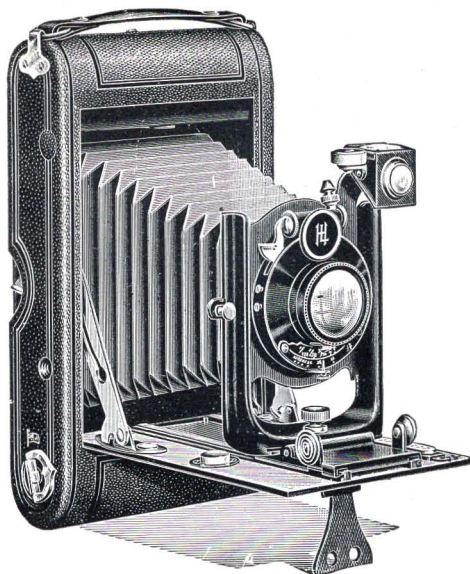
This camera uses Film Spool known as 3 1/4 in.

### Prices

3 1/4 in. Ensign Camera with Rapid Symmetrical Lens and Automatic Shutter, complete with Instruction Book .....	\$18.00
Extra for Antinous Release in place of Bulb and Tube .....	.50
Glass Focusing Screen and 3 Metal Plate Holders in Case .....	3.50
Extra Plate Holders, Singly .....	.50
Ground Glass Focus Screen with Hood .....	1.75
Solid Black Leather Case and Strap to carry Camera .....	1.50
Ensign Film Spools for this Camera—6 Exp., 35c.; 12 Exp. ....	.70
Special Lined Leather Case, with Lock and Key .....	1.75
Special Case with Key for Camera and Plate Holders .....	2.50
Metal Tripod suitable for this Camera, Montauk No. 40 .....	2.25

# ENSIGN CAMERAS

NEW YORK G. GENNERT CHICAGO



## The "3 1/4 In. Folding Ensign"

WITH DOUBLE ANASTIGMAT LENS—SYLVAR F. 6.8

### Specifications

**T**HE great advantage of the Anastigmat Lens equipment of hand cameras is already so thoroughly appreciated that we need hardly dwell at length thereupon. Where minute definition, the possibility of securing well-defined and evenly illuminated pictures at the maximum opening which, in turn, permits of the minimum exposure with rapid shutters are considered, the addition of an Anastigmat Lens readily repays for the extra expense.

The camera, it will be seen, is the regular 3 1/4 Folding Ensign—a perfect plate camera or film camera at will.

The Sylvar Double Anastigmat Lens—each combination in itself a perfect anastigmat capable of giving perfect definition and even illumination, is the latest and most approved type of Anastigmat working at F. 6.8 and covering the plate at its full aperture. Being a cemented lens, there are no air spaces. The covering power of the Sylvar is so great that it may be used with small stops on larger plates as a wide angle. The pictures made with the Sylvar are very brilliant and evenly illuminated from corner to corner. The price of the Sylvar equipment, considering its excellence, is low.

**Shutter.** Unless it is desired to avail oneself of the offer to fit Compound shutter at the advanced price, the well known Autex shutter having Iris diaphragm and enclosed air-valves with either ball and tube or Antinous release is supplied.

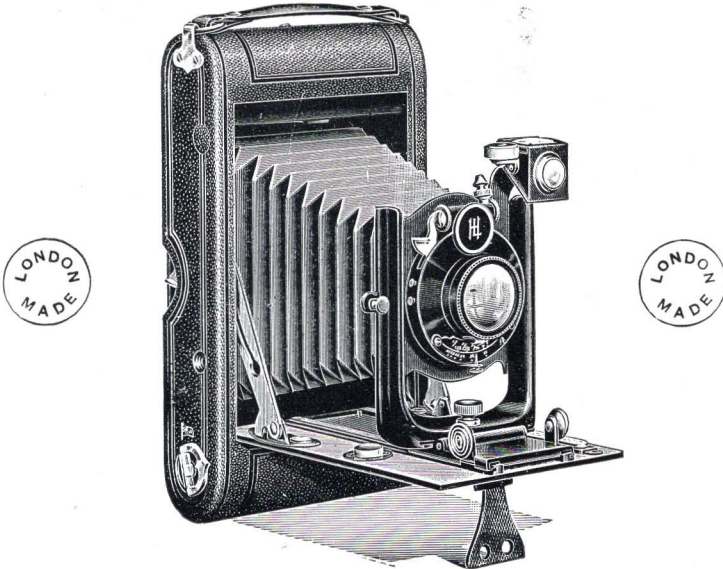
### Prices

3 1/4 in. Ensign "Sylvar" Special Equipment F. 6.8, 5 in. focus.....	\$40.00
Extra for Compound Shutter, 1/250 sec. ....	5.50
Black Leather, Velvet Lined Case with Strap and Lock and Key....	2.50
Glass Focusing Screen and 3 Metal Holders.....	3.50
Extra Plate Holders, singly, each .....	.50
Ground Glass Focusing Screen with Hood .....	1.75
Special Lined Case with Lock and Key for Camera and Plate Holders	3.50
Ensign Double Instantaneous Film Spool for this Cam., 6 ex., 35c.; 12 ex.	.70
Metal Tripod suited to this Camera—"Montauk" No. 50 .....	2.75



# ENSIGN CAMERAS

NEW YORK G. GENNERT CHICAGO



## The "Post Card Folding Ensign"

**T**HIS latest U shaped front Post Card Camera is the handsomest London-made camera in point of design, material, finish, size and workmanship and is justly popular the world over. A most thorough equipment operating with ease and making the most popular of all pictures in size. For *plates or films* at will, this camera is well adapted to home portraiture (even at close range with portrait attachment), giving really excellent portraits or groups, by the light of a window or by flashlight, while in the field there is no limit to its usefulness and practicability.

**Camera.** Instantly impresses the eye by its beauty of design, finish and symmetry of proportion, front U shaped, rising, falling and shifting; base aluminum; rack and pinion focusing device as well as infinity catch adjusted for plates or films.

**Shutter.** The well known Automatic with Iris Diaphragm, the pumps or valves being on the inside where they may not become clogged with dust.

**Lens.** Extra Rapid Symmetrical, working at F. 8, admitting of use of rear combination singly.

**Finder.** Brilliant reversible with level, all attached at the outside of lens.

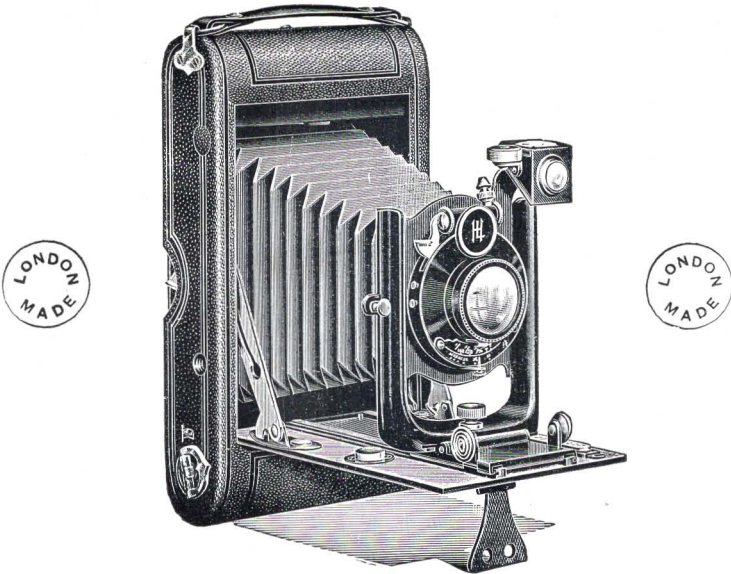
**Tripod Plates.** For use on a tripod for oblong or upright pictures.

### Prices

Post Card Ensign Camera, complete with Rapid Symmetrical Lens.	\$22.50
Extra for Antinous Release instead of Ball and Tube .....	.50
Glass Focusing Screen and three Metal Plate Holders for Glass Plates $3\frac{1}{4} \times 5\frac{1}{2}$ .....	4.50
Extra Single Plate Holders .....	.70
Ground Glass Focusing Screen with Hood .....	2.50
Solid Leather Case with Shoulder Strap .....	1.50
Solid Leather Case with Lock and Key .....	1.85
Solid Leather Case for Camera and 6 Holders .....	2.50
Ensign Double Instantaneous Film Spools to fit above Camera, 6 Exp.	.40
10 Exp.	.70
Metal Tripod suited to this Camera, Montauk No. 40 .....	2.25

# ENSIGN CAMERAS

NEW YORK G. GENNERT CHICAGO



## The Post Card Folding Ensign

WITH DOUBLE ANASTIGMAT LENS, SYLVAR F. 6.8

### SYLVAR POST CARD

Same specifications as  $3\frac{1}{4}$  in. Ensign Special Equipment

#### Prices

Post Card $3\frac{1}{4} \times 5\frac{1}{2}$ in. Ensign "Sylvar" Special Equipment F. 6.8, $6\frac{1}{2}$ in. focus	\$48.75
Extra for Compound Shutter, $\frac{1}{200}$ sec.	6.50
Black Leather, Velvet-lined Case with Lock and Key and Shoulder Strap	2.75
Glass Focusing Screen and 3 Metal Plate Holders for Glass Plates	4.50
Extra Single Metal Plate Holder	.70
Ground Glass Focusing Screen with Hood	2.50
Solid Leather Case lined with Velvet for Camera and 6 Plate Holders, Lock and Key	3.50
Ensign <i>Double Instantaneous</i> Film Spools to fit above Camera, 6 exp.	.40
10 exp.	.70
Metal Tripod suited to this Camera, "Montauk" No. 50	2.75

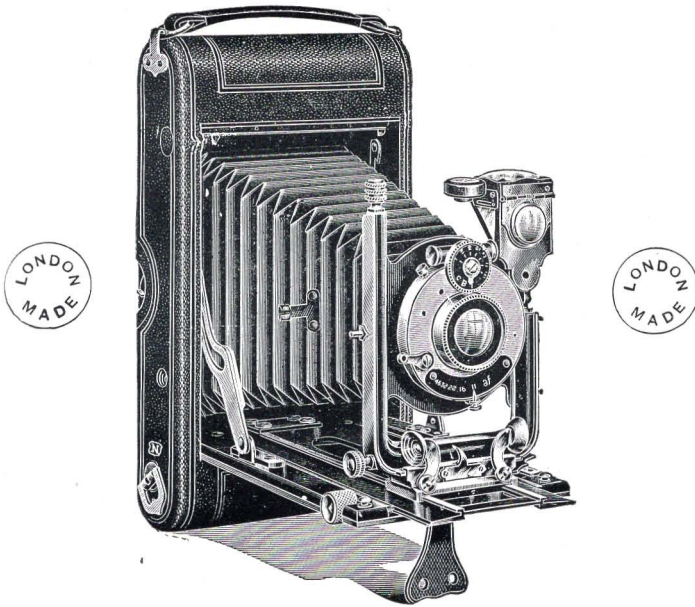
#### Special Equipments

$3\frac{1}{4} \times 4\frac{1}{4}$  in. and Post Card ( $3\frac{1}{4} \times 5\frac{1}{2}$  in.) Ensign Folding Models will be supplied with the following special Cooke, Goerz or Zeiss Lenses at prices annexed:

$3\frac{1}{4} \times 4\frac{1}{4}$ in. Ensign Folding Camera fitted with Cooke Luxor Lens F. 6.8, 5 in., Auto Shutter	\$42.00
$3\frac{1}{4} \times 5\frac{1}{2}$ in. Camera, same as above, with 6 in. Lens, Auto Shutter	45.00
$3\frac{1}{4} \times 4\frac{1}{4}$ in. Ensign Folding Camera fitted with Cooke Anastigmat Ser. III, F. 6.5, Auto Shutter, 5 in. Lens	53.50
$3\frac{1}{4} \times 5\frac{1}{2}$ in. Ensign Folding Camera fitted with Cooke Anastigmat 6 in. Lens, Ser. III F. 6.5, Auto Shutter	63.75
$3\frac{1}{4} \times 4\frac{1}{4}$ in. Ensign Folding Camera fitted with Goerz Syntor Anastigmat F. 6.8, 5 in., Auto Shutter	45.00
$3\frac{1}{4} \times 5\frac{1}{2}$ in. Post Card Ensign Folding Camera fitted with Syntor Anastigmat F. 6.8, 6 in.	55.00
$3\frac{1}{4} \times 4\frac{1}{4}$ in. Goerz Dagor, 5 in.	62.00
$3\frac{1}{4} \times 5\frac{1}{2}$ in. Goerz Dagor, 6 in.	75.00
$3\frac{1}{4} \times 4\frac{1}{4}$ in. Zeiss Tessar 2B No. 4, $5\frac{1}{2}$ in.	58.00
$3\frac{1}{4} \times 5\frac{1}{2}$ in. Zeiss Tessar 2B No. 5, 6 in.	67.50
Compound Shutter in place of Autex, extra	5.00

# ENSIGN CAMERAS

NEW YORK G. GENNERT CHICAGO



## The “Folding Ensign De Luxe”

AS the name denotes, the Ensign De Luxe must be and it is the ultra elegance and luxury of camera equipment. A careful examination of this camera will fail to reveal an adjustment omitted or a flaw in design or construction.

*The Camera.* The few wooden parts made of the finest close-grained San Domingo mahogany; black leather bellows; ebonized baseboard covered in best quality Morocco grained leather; nicked fittings; rising, falling and shifting, double extension front, rack and pinion actuated.

*Shutter.* The Compound Shutter is used on this model exclusively. It gives all speeds from  $\frac{1}{300}$  to 1 second accurately and is accepted as the best shutter procurable.

*Release*—Antinous.

*View Finder and Level* combined; of the latest and best construction.

*Focus Scale.* Adjusted to suit lens sold with camera.

*Infinity Catch.* Adjusted to suit lens sold with camera.

This camera may be used with plates, cut films or roll films and for upright or oblong pictures at will.



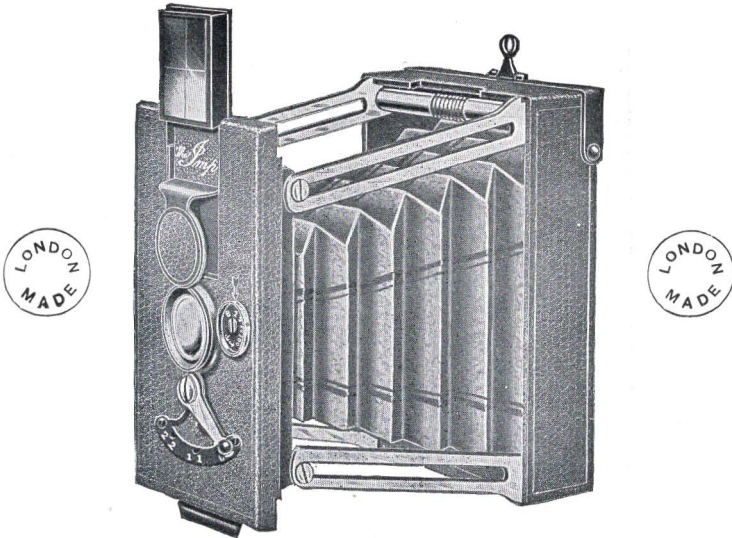
NEW YORK G. GENNERT CHICAGO

## Price List

Solid Leather Case and Straps lined and with Lock and Key.....	3½x4½, \$2.50	3½x5½, \$3.50
--	---------------	---------------

# ENSIGN CAMERAS

NEW YORK G. GENNERT CHICAGO



## The "Imp" Camera

THE "Imp," London made, all-metal plate camera is at once the smallest, most perfect and practical metal folding-camera on the market.

It is extended by means of struts to a positive focus always ready for instant use.

The Camera is made of metal covered with black, Morocco-grained leather.

The Lens is an excellent quality of Rapid Symmetrical working at F. 8.

The Diaphragm adjustment is by a lever movement directly above the lens.

The Shutter is a Time, Bulb and Instantaneous, automatically adjusted for  $\frac{1}{25}$ ,  $\frac{1}{50}$  or  $\frac{1}{100}$  of a second.

By a unique adjustment the Direct Finder recesses into the front, quite out of the way. When the finder is closed a neat leather cap covers the lens to keep out the dust. When the finder is pulled out for use it uncovers the lens.

Plate Holders. 6 metal plate holders of neat and excellent construction are included in the price; they come packed in a neat case to carry in the pocket.

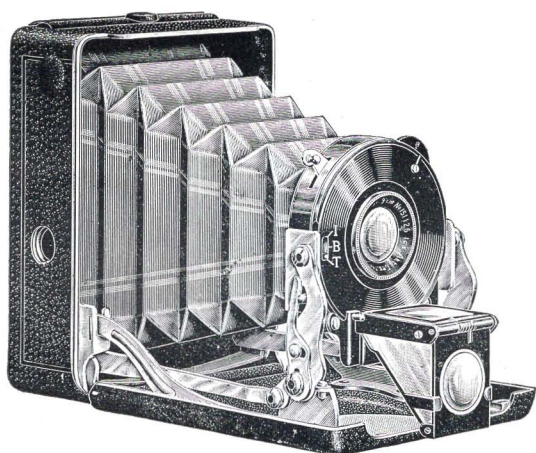
The "Imp" Camera fits the Vest Pocket.

### Prices

- "Imp" Camera in case, for plates  $4\frac{1}{2} \times 6$  cm., including R. S. Lens F. 8 and 6 metal plate holders in a case, \$18.00
- "Imp" Camera for film pack instead of plates..... 18.00
- "Imp" Camera with Anastigmat Sylvar Lens, either Model..... 36.00

# ENSIGN CAMERAS

NEW YORK G. GENNERT CHICAGO



## The "Atom" Vest Pocket Camera

FOR PLATES AND FILM PACK  $4\frac{1}{2} \times 6$  cm.

WHEN closed the "Atom" camera is not much larger than a box of safety matches. The camera opens automatically to a set focus and closes with equal facility, so it is always ready for use. The wonderful mechanical construction of this camera removes it at once from any suspicion of being a toy. It is a wonderfully accurate camera and makes plates that can readily be enlarged to  $5 \times 7$  size. A full-size finder shows the picture. The "Atom" is covered with black Morocco leather, has two tripod plates and withal presents an appearance bound to impress. The price includes 3 plate holders and ground glass frame.

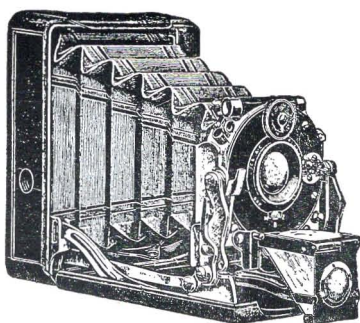
### Prices

"Atom" Camera fitted with R. R. Lens F. 8.....	\$18.00
"Atom" Camera fitted with Anastigmat.....	23.50
3 Plate Holders, in case, extra \$1.50. Each.....	.50
Film Pack Adapter.....	2.75
Imperial S. S. Plates, $4\frac{1}{2} \times 6$ cm., per doz.....	.30
Film Packs of 12, $4\frac{1}{2} \times 6$ cm. Films, each.....	.35



# ENSIGN CAMERAS

NEW YORK G. GENNERT CHICAGO



"Atom" Camera, Model 51

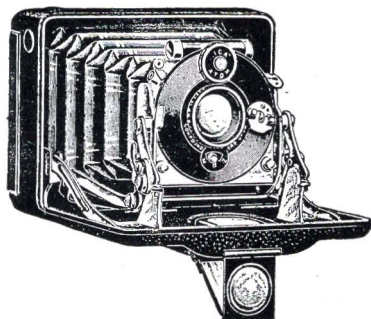
## The "Atom" "SPECIAL" VEST POCKET CAMERA

With High Grade Lenses and  
Focusing Device

THIS improved "Atom" followed closely upon the introduction of the regular model, as the demand for a camera of such mechanical perfection, fitted with more perfect Anastigmatic lenses, was quite natural.

The "Special Atom" has a unique focusing device which permits of still greater precision being obtained, and these marvelously perfect little pictures can be enlarged to any reasonable sizes. This camera is made in two styles—No. 51, opening upright and No. 53, opening lengthwise.

Shutter Compound. Finder Brilliant and extra large. Mechanical construction and material the best.



"Atom" Camera, Model 53

### Prices

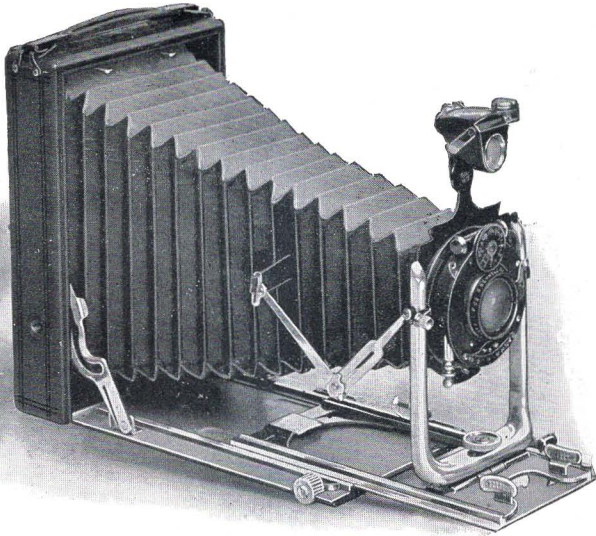
"Atom Special" No. 51 T with Zeiss Tessar Lens, Compound Shutter, complete .....	\$52.50
"Atom Special" No. 53 T with Zeiss Tessar Lens, Compound Shutter, complete .....	63.50
Extra Plate Holders—Model 51, each.....	.50
Model 53, each.....	1.00
Film Pack Adapter.....	2.75
Imp. S. S. Plates, 4½x6 cm., doz.....	.30

# ENSIGN CAMERAS

NEW YORK

G. GENNERT

CHICAGO



## The Sylvar Camera

A MARVEL OF COMPACTNESS, FOR PLATES AND CUT FILM

**T**HE Sylvar Camera is the crowning achievement of the camera-maker's art. No time or expense has been spared to make it the best camera procurable.

A surprising amount of disappointments are avoided with a Sylvar Camera: most hand cameras are clumsy, unreliable and do not give the expected results.

The Sylvar Camera never disappoints and has forged ahead as a leader, the first choice of the most fastidious camera users, such as Newspaper and Commercial Photographers who require a camera up to the highest standard of efficiency for nearly every purpose to which a camera may be put.

We recommend the Sylvar Camera to you because it is the choice of experts and has set their standard. Why not let it raise yours? It is the most efficient and best camera ever put on the market at a reasonable figure.

The Sylvar Camera can and will help you to take clearer, sharper and better pictures than you have ever taken before.

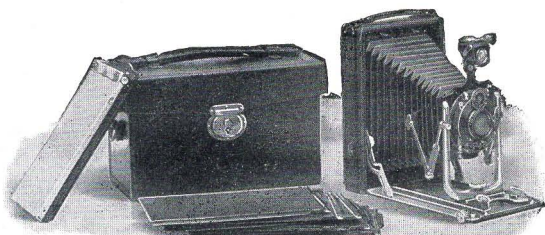


# ENSIGN CAMERAS

NEW YORK

G. GENNERT

CHICAGO



## Specifications

Box of well-seasoned mahogany and aluminum, covered with morocco leather of the very best grade obtainable.

A double extension morocco leather bellows with new style bellows supports (bellows extended 12 inches).

Double extension bed of frosted aluminum and nickel-plate; rack and pinion focusing.

Rising, falling and side sliding front by an entirely new mechanical device.

Compound shutter, speed  $1/250$ th of a second to time exposure, fitted with the Sylvar Lens F. 6.8, a high-grade anastigmat, very fast and of exceptional fine definition. Front or back combination can be used separately as a telephoto lens. The front of camera with lens and shutter is supported between a U-shaped upright of metal, a most rigid and compact construction.

Brilliant finder, with spirit-level for horizontal or vertical pictures.

Ground glass and focusing hood folding up flush with the camera when not in use.

Six single metal Plate Holders with non-detachable slides, numbered 1 to 6. Film Pack Adapter of the most approved style.

The Sylvar Camera is made in two sizes:  $3\frac{1}{4} \times 4\frac{1}{4}$ , weight  $1\frac{1}{4}$  lbs, and  $3\frac{1}{4} \times 5\frac{1}{2}$ , weight 1 lb. 15 ozs. The outside dimensions of  $3\frac{1}{4} \times 4\frac{1}{4}$  size are  $1\frac{1}{2} \times 4\frac{1}{4} \times 5\frac{1}{2}$  inches; the  $3\frac{1}{4} \times 5\frac{1}{2}$  size closed measures  $1\frac{3}{8} \times 4\frac{1}{8} \times 6\frac{1}{4}$  inches.

## Prices

Sylvar Camera, size  $3\frac{1}{4} \times 4\frac{1}{4}$ , outfit as above.....\$55.00

Sylvar Camera, size  $3\frac{1}{4} \times 5\frac{1}{2}$  for plates or cut films,  
with six single metal Plate Holders, Film Pack  
Adapter, Compound Shutter, Sylvar Lens, and  
Leather Carrying Case, complete..... 60.00

Sylvar Camera, size  $4 \times 6$ , with 7 in. Sylvar..... 75.00

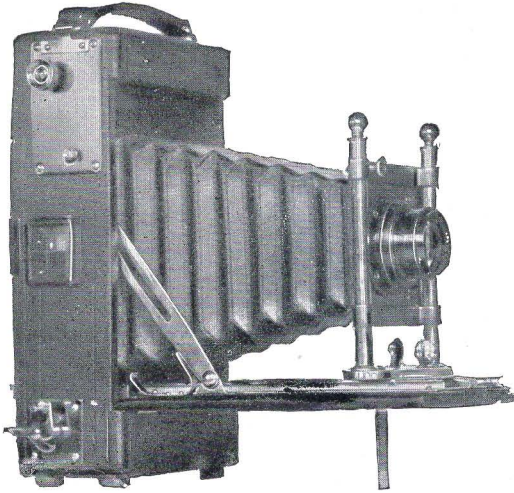
Extra Plate Holders, either size, each..... 1.00



# ENSIGN CAMERAS

NEW YORK G. GENNERT CHICAGO

## The "Sylvex" Focal Plane Post Card Camera



In this new model we offer a new, neat, light and compact high speed folding camera with focal plane shutter for speed work on plates or film packs  $3\frac{1}{4} \times 5\frac{1}{2}$  size. The camera is fitted with Sylvar Double Anastigmat Lens working at F. 5.5 and the lens will be found amply ra-

pid for the various shutter speeds and fully equal in definition to any double anastigmat working at the same aperture.

The Sylvex speed camera is well and thoroughly made of the best materials, perfectly rigid and free from vibration or jar during exposure. It is supplied with rising and falling front with substantial standards, metal track on leather-covered bed, focus scale, speed table, view finder, two tripod sockets and handle of substantial leather.

The covering is best quality black Morocco grained leather, metal parts oxidized or nickered and buffed bright.

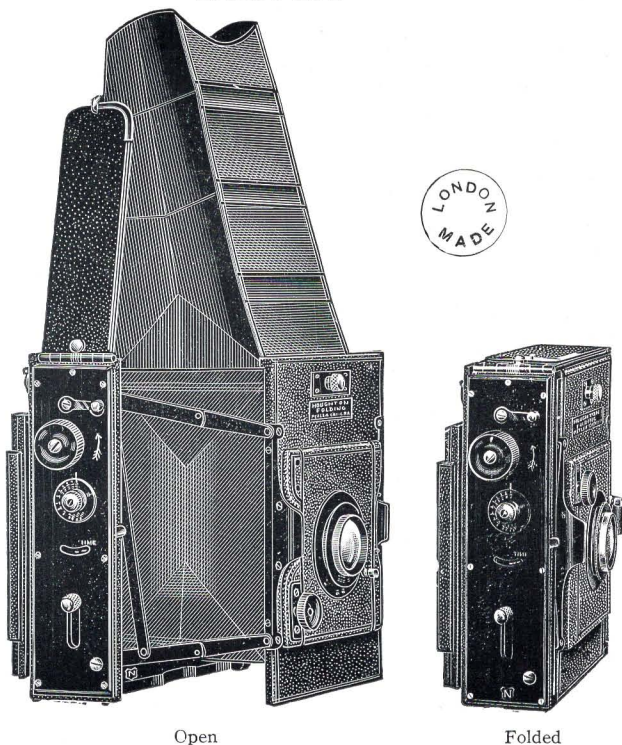
The focal plane shutter has a  $\frac{1}{2}$  in. stationary slit and is very simple in construction (not likely to give trouble) and exposures varying from  $\frac{1}{5}$  to  $\frac{1}{1000}$  of a second may be made. The new tension device is also simple and effective. Time exposures are made by winding the curtain until full opening at the end of shutter curtain (also used for focusing) is in place.

### Prices

Sylvex Focal Plane Post Card Camera, complete with Sylvar Anastigmat Lens F. 5.5, $6\frac{1}{4}$ to 7 in. focus...	\$50.00
Plate Holders, each.....	1.75
Film Pack Adapter.....	2.25
Leather Case and Strap.....	1.50
Leather Case lined, with Lock and Key to hold Camera and 3 Holders and Film Pack Adapter..	3.50

# ENSIGN CAMERAS

NEW YORK G. GENNERT CHICAGO



Open

Folded

## The "Houghton" Folding Reflex Camera

THE advantages of the full size reflector-camera are universally recognized, but have been greatly counterbalanced by disadvantageous bulk, which objection is now entirely removed in this new camera.

The decrease in size in the "Houghton" Folding Reflex has not been obtained by sacrifice of adjustment in any way; all the advantages have been retained, in spite of which the camera, when closed, measures only  $7\frac{1}{2} \times 6 \times 2\frac{1}{2}$  inches.

With this camera the full size picture may be focused on the screen up to the very moment of exposure. The construction is so well thought out that the camera cannot be put out of order except by sheer force.

When extended the Folding Reflex is as rigid as the box type and there is no trace of vibration during exposure and the mirror drops automatically after exposure, the balance being so perfect that the pressure required to release it is negligible—a degree of perfection not found in other cameras.

## NEW YORK G. GENNERT CHICAGO

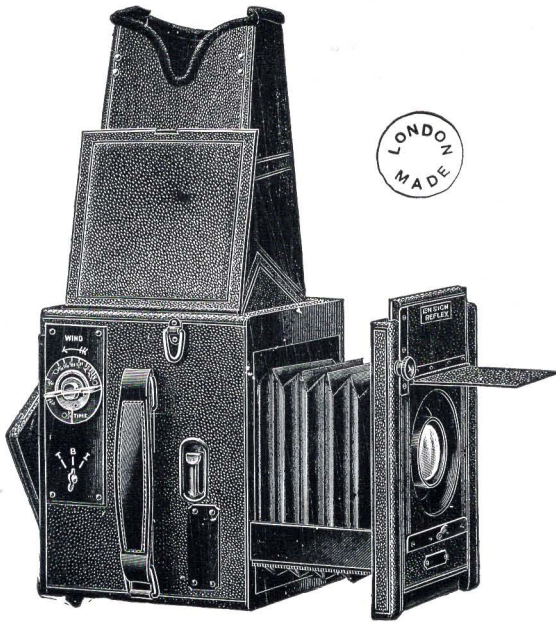


# ENSIGN CAMERAS

NEW YORK

G. GENNERT

CHICAGO



## The "Ensign" Box Form Reflex Camera

WITH an entirely new self-capping focal plane shutter which is so simple as to compel the admiration of the user and is practically fool-proof. The Ensign London-made Reflex Cameras will surely be popular in America as their record abroad indicates that their thorough construction and the simplicity of the mechanism which winds the shutter, determines the exposure and alters the slit—all with one motion—is certain of appreciation.

*The perfect balance of the mirror* assures exposures without vibration.

*Rack and Pinion Focusing* controlled by a large milled head knob on the opposite side to the release.

*Reversing Focusing Hood*, so that the operator can take pictures at right angles to the way he is apparently looking.

*Hood* rises and is set *automatically*.

*Lens Cone* sunk in, detachable, reversible.

*Rising and Falling Front* with the exact displacement shown on mirror.

*Revolving Back*, smooth working and easily operated, nothing detachable. Except  $3\frac{1}{4} \times 5\frac{1}{2}$  size.

*Sky Shade* hinged on front panel.

# **ENSIGN CAMERAS**

NEW YORK    **G. GENNERT**    CHICAGO

## **Sizes and Weight**

Size of Picture	Weight Without Lens		Dimensions of Camera
2½x3½ in.....	3	lbs. 2 ozs. Reversing Back	5½x6½x5
3½x4½ in.....	4	" 9 " " " "	7 x7½x5½
4x5 in. and 9x12 cm.	5	" 8 " " " "	8 x8½x6½
3½x5½ in.....	4	" 10 " Oblong only	7 x6½x7
4½x6½ in.....	8	" 1 " Reversing Back	10 x10x8½

*Construction.* Beautifully finished in ebonized mahogany with oxidized trimmings, only the best materials used throughout and covered in seal-grained Morocco leather.

The Automatic Hood of best black leather is of just the right shape and height, fits closely around the eyes and is reversible. It folds readily into the camera.

The silver-surfaced mirror is Everset and perfectly balanced. A shoulder-strap is supplied in addition to the usual handle and will prove a great convenience.

The Focal Plane Shutter, more fully described at the head of this article, is fool-proof. Mistakes in exposure are impossible and the speeds are all indicated on the plate of the key-wind from  $\frac{1}{10}$  to  $\frac{1}{1000}$  of a second, bulb or time exposure as wanted.

*The Lens.* Any lens may be fitted. We have listed several that we can recommend.

## **Prices**

Box Form Reflex Cameras—3½x4½ with 5 to 6 in. lenses, 3½x5½ and 4x5 with 6½ to 7 in. lenses, 4½x6½ with 8 to 8½ in. lenses.

	3½x4½	3½x5½ 4x5 9x12 c.m.	4½x6½ or 5x7
Ensign Box Form Reflex Camera fitted with Sylvar F. 6.8 .....	\$92.50	\$112.50	\$160.00
Ensign Box Form Reflex Camera fitted with Sylvar F. 5.5 .....	97.50	127.50	175.00
Ensign Box Form Reflex Camera fitted with Cooke Ser. II F. 4.5 ..	105.00	142.50	177.50
Ensign Box Form Reflex Camera fitted with Goerz-Dagor Ser. III F. 6.8 .....	106.00	145.00	185.00
Ensign Box Form Reflex Camera fitted with Goerz-Celor Ser. 1b F. 4.8 .....	108.00	147.50	190.50
Ensign Box Form Reflex Camera fitted with Zeiss-Tessar Ser. 1c F. 4.5 .....	108.00	150.00	195.00
Ensign Box Camera only, 3 Holders without Lens.....	63.75	94.00	126.00
Extra Plate Holders, each .....	1.75	2.50	3.50
Film Pack Adapter.....	2.75	3.25	4.50
Solid Leather Case, best quality...	5.00	7.50	10.00

# ENSIGN CAMERAS

NEW YORK G. GENNERT CHICAGO



## "Sylvar" Lenses

F. 6.8

THE desirability of an Anastigmat "high grade lens" for hand-camera work is universally recognized. It is well known that it doubles the speed and sharpness of the usual hand-camera. "Sylvar" Lenses, as listed below, have been constructed with special regard for the requirements of all "Ensign" and other makes of hand-cameras, and the wishes of the leading amateurs.

The focal lengths are selected to correspond closely to the focal lengths of the "Ensign" cameras and other instruments of similar type. The mountings are made of such size as to fit the shutters with which those cameras are supplied, so that it is a simple matter to attach a "Sylvar" Lens or a set of "Sylvar" Cells to most hand-cameras.

No expense is involved for fitting a "Sylvar" Lens or sending the camera away, and it is not necessary to buy a new shutter as the shutter supplied with the camera can be used in most cases; where a new shutter is wanted the Compound Shutter is especially recommended.

No effort has been spared to make the "Sylvar" a lens of highest quality and efficiency. It is made of the famous "Jena" glass and consists of two halves, each carefully corrected for color, flatness and sharpness. The appearance also of a set of "Sylvar" Cells, furnished in a beautiful leather-covered, plush-lined case, has been rendered most attractive.

The prices of "Sylvar" Lenses are moderate. We desire to place them within the reach of the majority of amateurs. From this it should not be inferred that they are lacking in quality for we guarantee the "Sylvar" equal in quality to lenses sold at higher prices.

Anyone desiring to test the qualities of a "Sylvar" may order one on approval through his dealer or direct, with a ten days' trial privilege.

### DESCRIPTION AND PRICES

No.	Focus inches	Ready to fit camera	Price of cells in handsome case with focus scale	Price with Compound shutter
2	5	No. 3 FPK with B & L shutter	\$22.50	\$35.50
3	6	Also all standard 4/5 shutters	24.00	37.00
3a	6½	No. 3a Kodak	25.50	38.50
4a	8¼	No. 4 and No. 4a Kodak	34.50	49.50

"Sylvar" Hand-Camera Cells will in addition be found to fit almost all standard shutters in the 4x5 and 5x7 sizes, such as Volute, Wollensak, Compound, Goerz XL; where they do not fit, they can be fitted at an additional charge of from \$1.50 to \$3 according to size of lens and style of shutter.



## Supplemental Lenses



### “PRIZE” SUPPLEMENTAL LENSES

These Supplemental Lenses give the ordinary short bellows hand-camera a wonderful scope, reducing the focus of the lens so as to permit its use for larger pictures without any increase in the length of bellows. These lenses fit over the regular lens-hood and are held securely in position by small thumbscrews. These lenses are carefully made in our own optical department of the best optical glass and the mountings are polished and engraved brass.

The ray filter is optically correct in color and increases exposure about four times.

The Duplicator is much used to produce double exposures on the same plate and many amusing freak photos may be made with it.

*Sold Separately or in Sets*

Per set, Fitting lens barrels from 1 to 1½ in. diameter, in Leatherette Case. ....	\$6.00
Portrait Lens only, in Box .....	1.00
Ray Filter only, in Box .....	1.00
Enlarging Lens only, in Box .....	1.00
Wide Angle Lens only, in Box .....	1.00
Telephoto Lens only, in Box .....	1.00
Duplicator only, in Box .....	.75

### “MONTAUK” SUPPLEMENTAL LENSES

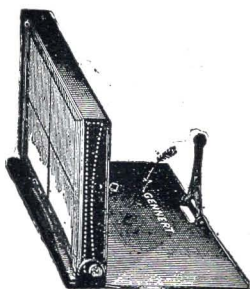
These Lenses, while only one-half the price of the “Prize” Supplemental Lenses, are nevertheless excellent lenses for the purpose. Their construction is somewhat less expensive and where a good lens at a reasonable price is wanted, the fact that they are gun metal finished and fastened by means of clips made in the tube itself will not be considered a drawback.

*Sold Separately or in Sets*

Price per Set in neat Box .....	\$3.00
Portrait Lens only .....	.50
Ray Filter only .....	.50
Enlarging Lens only .....	.50
Wide Angle Lens only .....	.50
Telephoto Lens only .....	.50
Duplicator only .....	.25

# View Finders and Levels

## "Montauk" View Finders

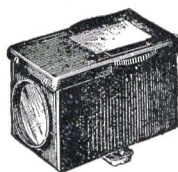


Sure Shot Finder

These View Finders are constructed for use on hand or stand cameras, so that the view can be seen even in the brightest sunlight without shading.

THE ONWARD FINDER has a reversible field, showing an upright or horizontal opening as may be required and used by looking onto the finder.

Price \$2.00



The Onward Finder

THE SURE SHOT FINDER. This is a compact collapsible form, and the direction of the camera is found by sighting for the index and the cross section of the lines on the finder glass. 4x5, \$1.50; 5x7, \$2.00; 6½x8½, \$2.25; 8x10, \$2.50.

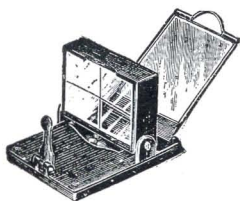
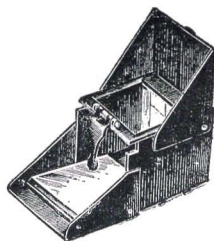
SURE SHOT FINDER—Grade B, two sizes only—4x5, 75c.; 5x7, \$1.25

THE MIDGET FINDER—Same style as the Sure Shot Finder. For small hand cameras. Price 60c.

## The Duplex Finder

Constructed with moving mirror and hood, so that the image may be seen by looking through it with the camera at the height of the chest.

4x5 .....	\$1.25
5x7 .....	1.50



## Folding Reflecting Finder

Similar in construction to the Sure Shot but has a mirror added so that the picture may be viewed also by looking down into the finder.

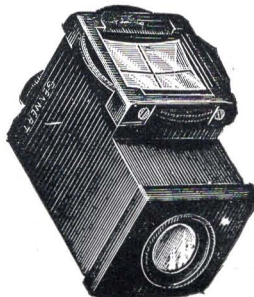
4x5 .....	\$3.50
5x7 .....	4.00

## The Turnaway Finder

This is a new and remarkable style; in using it you turn 90° away from the subject. You appear to be looking in an entirely different direction from the object and catch the latter unawares.

Held at the height of the eye while exposing. Reversible field.

Price \$2.50

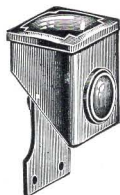
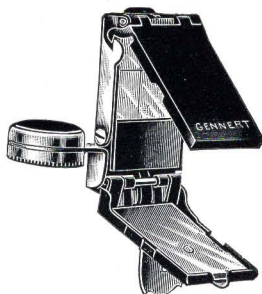


## The "Montauk" Compound Finder and Level

This is a meritorious finder and level combining three-in-one. First—a reflecting finder. Second—a direct view finder to be held at a level with the eye. Third—a level is attached insuring straight lines in the photograph.

It is of excellent construction and made in one size only.

Price \$2.50



## "Sylvar" Finder

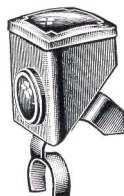
A brilliant finder with an exceptionally brilliant field—so constructed that it may be used with all small model hand cameras.

Price \$2.50

## "Expo" View Finders

No. 10.—A brilliant reversible finder for use with "Expo" Watch Camera. Supplied with prongs to fit over the camera-stem.

Price 75 cents



No. 10

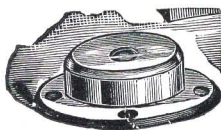


No. 11

No. 11.—This is a ground-glass finder with prongs to fit over the camera-stem on side of camera containing film-winding key. For use on "Expo" Watch Camera.

Price 50 cents

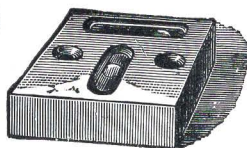
## The "Montauk" Spirit Levels



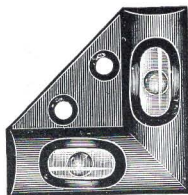
No. 1



No. 2



No. 4



No. 3

These instruments are of the greatest convenience for placing the camera absolutely level and thereby rendering parallel line absolutely correct.

No. 1—Montauk "Circular" level .....\$0.30

No. 2—Montauk Double "T" level... .. .40

No. 3—Montauk Double "Angle," extra fine construction..... .75

No. 4—Montauk Double "Square" level..... 1.25

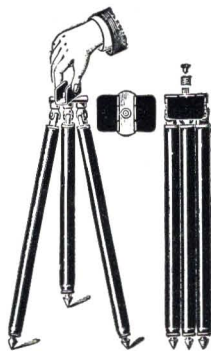




No. 74



No. 40

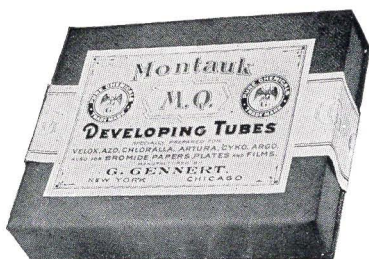


No. 450

## "Montauk" Metal Tripods

THESE tripods, made of stout metal tubing yet light in weight, compact and ideally portable, have rapidly replaced the more cumbersome wooden tripods. Several newer types have been added recently which lie flat when closed. The shape of head used having been changed to admit of this, the numbers 74, 77, 450 and 575 are somewhat more expensive, but the improved construction will appeal to those who can afford the extra money.

No. 30—3 sections, round brass legs, 45 in. extended, 17½ in. closed...	\$1.75
No. 40—4 sections, round brass legs, 48 in. extended, 15 in. closed...	2.25
No. 50—5 sections, round brass legs, 50 in. extended, 15 in. closed...	2.75
No. 70—7 sections, round brass legs, 49 in. extended, 12 in. closed...	3.25
No. 74—7 sections, round brass legs, 49 in. extended, 12 in. closed. Top is a straight bar and legs lay flat when closed.....	4.75
No. 75—Same as No. 74 but made of Aluminum. This tripod is very light in weight.....	6.50
No. 77—Similar to No. 74 but with jointed top, reversible legs with rubber ends for use on hard wood and marble floors, etc....	5.25
No. 260—6 sections, round brass legs nickered, with double spring catches, 59 in. extended. Very rigid, suitable for 5x7 cameras	4.75
No. 350—5 sections, round brass legs, 50 in. extended, 15 in. closed. New top with 3 projecting supports for the camera, folding flush with the tripod when not in use.....	5.00
No. 356—Same as No. 350 but extra high, 59 in. extended, 16½ in. closed	6.50
No. 370—Similar to No. 350 but has seven sections, 50 in. extended, 12 in. closed .....	5.50
No. 450—5 sections, round brass legs, 50 in. extended, 15 in. closed. New top, quickly adjusted, giving a wide, strong base for the camera.....	5.50
No. 474—Same as No. 450 but with 7 sections, 50 in. extend., 12 in. closed	6.00
No. 575—7 sections, round brass legs, 49 in. extended, 12½ in. closed. New swing top permitting the placing of the camera at any angle from horizontal to vertical. Flat when closed.....	6.00
Leather Carrying Cases for Nos. 30, 40, 50, 70, 74, 75, 77, 370, 474 ....	1.50
Leather Carrying Cases for Nos. 260, 350, 356, 450, 575.....	1.75



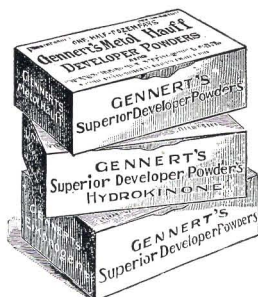
## “Montauk” Metol Quinol Tubes

Very convenient and reliable as a developer for gaslight developing papers—Chloralla, Argo, Cyko, Velox, etc. They contain a generous amount of Metol (so often omitted in cheap tubes), Hauff's Hydroquinone and enough Bromide to produce clear whites. Packed in glass tubes.

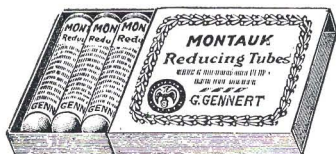
Small size, for 4 ounces developer, box of 6.....\$0.35  
Large size, for 16 ounces developer, each......15

## Developer Powders

The carefully tested formula from which these powders are prepared and their uniform working, as well as their convenience, make them a boon to the amateur or traveler. Each powder is complete and only needs dissolving in 4 ounces (or half an ordinary tumbler) of water. When dissolved the solution can be used repeatedly until exhausted. Each package contains 6 powders which are sufficient for 24 ounces of developer. If the developer works too rapidly a few drops of a 10% solution of Bromide of Potassium should be added.



Metol Powders — Hydro-Metol Powders — Eikonogen Powders — Hydroquinone Powders, all 6 in a package. Per package.....25c.



## “Montauk” Reducing Tubes

Quickly reduce all negatives to the proper density that, through over-exposure or over-development, are too dense for use or take too long to print.

All that is necessary is to dissolve the contents of a tube in a few ounces of water and immerse your negative in the

solution for a short time until sufficiently reduced: local reducing may be accomplished by applying “Montauk” Reducer to the parts desired with a camel hair brush or swab of cotton.

Per  $\frac{1}{2}$  Doz. Box.....50c. Per Tube—with directions...10c.

## “Montauk” A1 Solution Intensifier

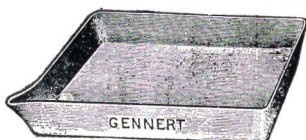
An Intensifier, in order to be of value, must increase the contrast between high light and shadow, that is, the brilliancy of the negative, so as to improve its printing quality. An A No. 1 Intensifier should also be available for local intensification so as to improve the balance of a negative if necessary. “Montauk” Intensifier is A No. 1 and will do everything that is expected of the perfect Intensifier. It is a single powder, may be mixed as needed and keeps in both dry and liquid form.

### Prices

$\frac{1}{2}$  oz. Tube, making 6 oz. solution, 15c. each. Per Doz. (Box).....\$1.80  
1 “ “ “ 10 “ “ 25c. “ Per  $\frac{1}{2}$  Doz. (Box).....1.50  
 $\frac{1}{2}$  lb. Bottle, Professional Size, \$1.00

# Trays

## "Montauk" Porcelain Trays

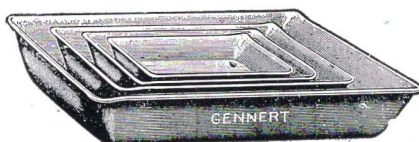


For those who prefer Porcelain Trays for their solutions we recommend the "Montauk." They are made on special moulds, guaranteed perfectly flat and of the finest quality.

Size	For Plate	Deep	Each
5½ x 7½	5 x 7	1½	\$0.60
5½ x 8½	5 x 8	1½	.75
7 x 9	6½ x 8½	1½	.80
8½ x 10½	8 x 10	1½	1.00

## Porcelain-Lined Trays

These Trays are made of heavy sheet-iron and enameled. They are very durable, suitable for hot solutions and easy to keep clean. Can be used for toning, developing, etc., and are not affected by acids.



Size	For Plate	Deep	Each
4½ x 5½	4 x 5	1½	\$0.25
5½ x 7½	5 x 7	1½	.37
5½ x 8½	5 x 8	1½	.55
7½ x 9½	7 x 9	1½	.73
8½ x 10½	8 x 10	1½	1.00



## "Acorn" Hard Rubber Trays

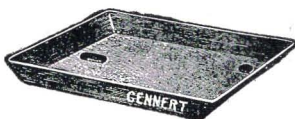
Hard rubber is unquestionably the most suitable material for the manufacture of photographic trays as it withstands the action of chemicals better than any other substance. Each "Acorn" Hard Rubber Tray is formed separately on a finely polished mandrel and vulcanized so as to assume permanently the shape and smoothness of the mandrel.

The trays are deep to prevent spilling of the developer while rocking the tray. They can be used for developing, fixing, silvering, toning, etc.

4½ x 5½ inside, for plates	4 x 5	\$0.61
5½ x 7½ " "	5 x 7	.70
5½ x 8½ " "	5 x 8	.88
7 x 9 " "	6½ x 8½	1.10
8½ x 10½ " "	8 x 10	1.50

## "Campbell" Rubber Trays

These trays are excellent for all photographic work. They are made of thin pressed rubber half inch deep; depressions for the fingers; beautifully matt-finished, light, very elastic and tough.



4 x 5	.33c.	5 x 8	.55c.
-------	-------	-------	-------



# Duranoid Trays



Made of compressed fibrous material, handsomely finished, suitable for developing, fixing and washing. They are perfectly smooth, without seam, will not lose their shape and guaranteed to stand acids.

4 x 5.....15c.    5 x 8.....25c.  
6½x8½.....40c.    8 x10.....55c.

## The Duranoid Fixing Box

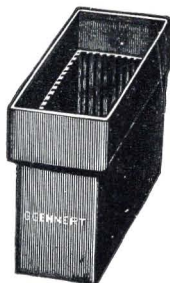
Made of "Duranoid" fibrous material and highly polished—a serviceable, neat and durable fixing box. It is not affected by ordinary chemicals, takes twenty 4x5 or twelve 5x7 plates and is easy to keep clean; the plates are raised above the bottom so that any sediment forming does not get on the face of the plates. It is also very inexpensive and economical in solution and space.

By a special new added feature—a Plate Adjuster—the "Duranoid" will also accommodate smaller sizes of plates—2½x2½, 3½x4½, Lantern Slides, 3½x4, 3½x5½.

Duranoid Fixing Box for twenty 4x5 or twelve

5x7 plates, without Plate Adjuster.....\$1.50

Plate Adjuster for small sizes, extra..... .35



## "Universal" Hard Rubber Fixing Box

The "Universal" has grooves on each side and will take several sizes—smaller plates across the box, longer ones the long way.

A dust cover is provided, which also saves loss by evaporation. Only best quality rubber used.

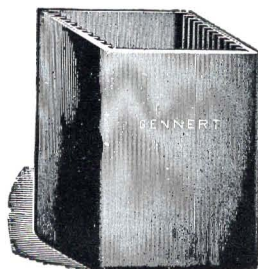
No. 1 allows of twenty-two 3½x4½, 4½x5½, 4½x6½, or ten 6½x8½ plates being fixed at one time.....\$5.20

No. 2 allows of twenty-four 4x5, 5x7 or 5x8, or twelve 8x10 plates being fixed at one time..... 6.00

## THE X. L. PLATE WASHER

This Plate Washer consists of an outer zinc case with an adjustable frame to hold plates from 3½x3½ up. The rack has a sliding piece so that any intermediate size can be used; the rack lifts right out and is used to dry the plates after washing. The water enters through the funnel to the bottom of the tank, passes through the plates and runs out at the top, carrying all impurities with it.

For plates up to 5x7, 85c. Up to 6½x8½, \$1.50. Up to 8x10, \$2.00



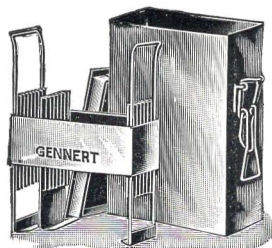
## HARD RUBBER FIXING BATHS

Recognizing that the correct position for plates in any fixing bath is a vertical or standing one, we have introduced these baths to guard against the many failures resulting from fixing in trays. These baths hold a dozen plates at a time, therefore use less Hypo than trays; they are made of rubber and practically indestructible.

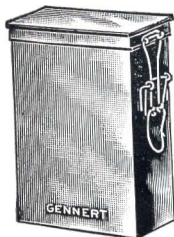
3½x4½ or lantern slide plates.....\$2.75  
4 x 5 plates.....\$3.00    6½x8½ " ..... 4.95  
5 x 7 " ..... 3.70    8 x 10 " ..... 5.50

## The "Prize" Reversible Developing Tank

This is a practical and well constructed developing tank. One of its important features is that every model is fitted with a plate adjuster, which permits each to be used with a number of different size plates. The workmanship is of the best, and only brass is used in its construction which is highly polished and then nickel-plated, making it feasible to develop and fix in the same tank.



Tank Open Showing Rack and Plate Adjuster



Tank Closed

The lid has a rubber pad and fits snugly over the top of the tank; it is held firmly in position by a new method of clamps, one at each side of the tank. The tank is light and water tight and can be reversed. The rack is removable, which facilitates loading and unloading the tank. Capacity, 12 plates.

### Prices

No. 8—	Sizes 4x5, 3½x5½, 3¼x4½	.....\$3.50
No. 9	" 5x7, 4x5, 3½x5½, 3¼x4½	..... 4.50
No. 10	" 6½x8½, 5x7, 4½x6½	..... 6.50
No. 11	" 8x10, 6½x8½, 5x7	..... 7.50

## "Velvet" Ground Glass

Best quality for focusing screens, transparencies, etc. Finest finish, pure white.

4x5, 10c.	8x10, 30c.	11x14, 65c.
5x7, 15c.	10x10, 40c.	14x14, 70c.
6½x8½, 22c.	10x12, 45c.	
14x17, extra thick, \$1.00	18x22.....\$1.25	



## Glass Graduates

Our graduates are accurate in graduation. The lines go almost completely around the graduate, facilitating the correct measuring. The shape is such that they can be easily cleaned.



Minims, 1 drachm.....\$0.20	8 ounces.....\$0.33
Minims, 2 " ..... .25	12 " ..... .45
1 ounce......17	16 " ..... .50
2 " ..... .19	24 " ..... .75
4 " ..... .25	32 " ..... 1.00

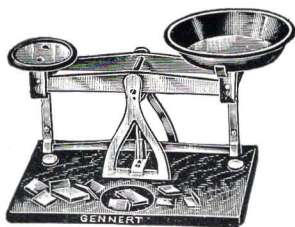


## The "Montauk" Thermometer Stirring Rod

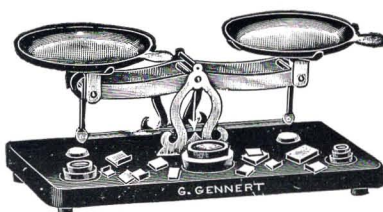
A most handy article combining three-in-one. A Thermometer for taking the temperature of solution. A Stirring Rod and a Pestle to crush undissolved chemicals.

The Rod is made of strong glass with a flat, button-like end. Diameter ¼ in., length 9½ in. Packed in a neat, cylindrical wood case. ....50c.  
"Montauk" Flat End Stirring Rod, without Thermometer .....10c.

# Scales



No. 1

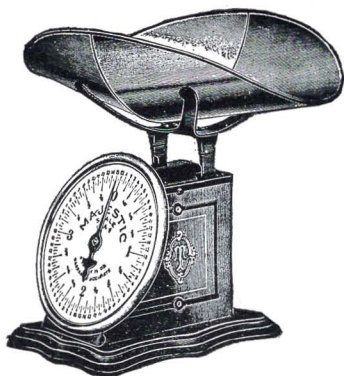


No. 4

## The Bullion Scales

This is the best photographic scale made with loose pan for cleaning. It is always ready for use—does not require setting up—and is substantially made; supplied with ebonized varnished wood-stand, nickel-plated fittings, and a set of weights. Each scale is specially adjusted.

- No. 1—Has a 3-inch pan, and a set of weights to weigh drams, scruples and grains. Sensitive to  $\frac{1}{2}$  grain.....\$1.50  
 No. 2—Has 3 $\frac{1}{2}$  inch pan and a set of weights from  $\frac{1}{2}$  grain to 2 oz. Sensitive to  $\frac{1}{2}$  grain ..... 2.75  
 No. 4—as illustrated, has two 3 $\frac{1}{2}$  inch pans and a set of weights from  $\frac{1}{2}$  grain to 2 oz. Sensitive to  $\frac{1}{2}$  grain..... 3.00



## The "Majestic" Scale

This scale will be found excellent for weighing large quantities where absolute accuracy is not required. It has a large removable scoop, can be adjusted so as to always point 0 when empty and weighs up to 4 lbs. by  $\frac{1}{2}$  ounce. The dial is silver-finished and the body black.

Price \$1.75



## Extra Sets of Weights

Dram, Scruple and Grain Weights in pasteboard box. Per set \$0.25  
 Dram, Scruple, Grain and  $\frac{1}{16}$  to 1 oz. Weights. Per set...\$0.75  
 Brass Block Weights, from  $\frac{1}{2}$  oz. to 1 lb. (accurate). Per set \$3.00  
 Metric Block Weights, from 1 gr. to 100 gr. (accurate). Per set 2.00

## The "Eagle" Scale

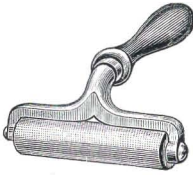
A very handy scale requiring no weights, screw adjustment for leveling; detachable pan; marked in scruples.



To weigh to 12 drams.....\$0.40  
 " " " 18 oz..... 1.25



## Print Rollers



### "Montauk" Print Roller

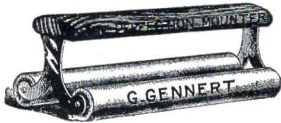
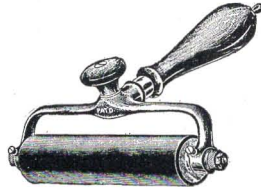
For mounting, squeegeeing, etc. Rosewood handle, Japanned arms and good quality rubber roller.

4 inch Roller.....20c. Nickel-plated Model, 30c.  
6 inch Roller.....30c. Nickel-plated Model, 45c.

### Ball-Bearing Squeegee Roller

Heavily nickel-plated and best rubber roller. Mounted on ball bearings it runs with great freedom and prints never curl around the roller or double up.

4 inch Roller...\$1.50 6 inch Roller...\$2.50  
10 inch Roller for professional use..... 4.25



### The Perfection Mounter

This is the best double-roller print mounter made; it gives a greater pressure to the print and is excellent for mounting heavy paper. The rollers are large and of thick rubber; it has nickel-plated trimmings and varnished handle.

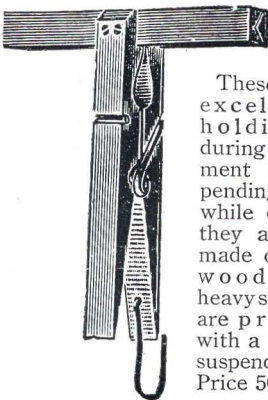
6 in. Roller.....75c. 8 inch Roller.....85c. 12 inch Roller....\$1.00

### The "Prize" Print Roller

This print roller is of heavy and substantial construction with  $1\frac{1}{4}$  in. rubber-covered roller.  
8 inch Roller, \$0.75 12 inch Roller \$1.25

### Flat Rubber Squeegees

$\frac{3}{16}$  inch soft rubber in polished hard wood mounts: 6 inch, 25c. 8 inch, 35c. 12 inch, 50c.



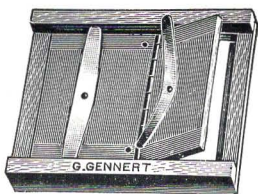
### The "Montauk" Film Clip

These clips are excellent for holding films during development and suspending them while drying; they are well made of hard wood with a heavy spring and are provided with a hook for suspending.  
Price 50c. dozen

### The "Montauk" Metal Film Clip

These clips are  $3\frac{1}{2}$  in. wide, made of metal, handsomely nickel-plated and have a heavy spring. They are very desirable for holding films during development and suspending them while drying, and will give long service.  
Price 25c. per pair.





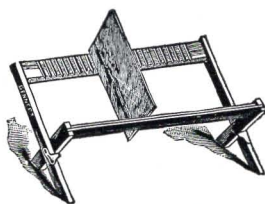
## Amateur Printing Frames

A good quality, light weight printing frame, well made, perfectly flat, with cloth or metal piano hinge.

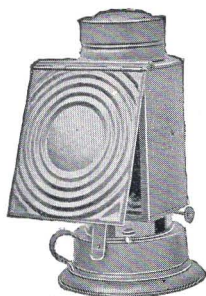
	3¼x4¼	3½x3½	4x5	3½x6	5x7
Cloth Hinge—	15c.	15c.	15c.	25c.	25c.
Piano Hinge—	20c.	20c.	20c.	30c.	30c.

## Folding Negative Rack

This is a very useful and necessary article in the Dark Room for standing your negatives in to dry after developing and washing. It prevents dirt being picked up on the film of the negative, which is so often the case if plates are stood on shelves against the wall to dry.



No. 1, for 12 plates up to 5x7 .....	25 cents
No. 2, for 24 plates up to 8x10 .....	30 cents



## The Red Light Lamp

These lamps are all well ventilated and give a good light. They are adjustable from the outside, burn without a chimney and have an eye-shade which acts also as a reflector.

No. 0—Oil lamp, with a single ruby glass, height of lamp, 7 inches.....\$0.45

No. 1—Oil lamp, style of No. 3 design, with single ruby glass, height of lamp, 7½ inches .50

No. 2—Oil lamp, style of No. 3, 2 glasses, 3½x4½, one ruby, one amber; height, 9 inches ..... .60

No. 3—Oil lamp, 2 glasses, 4½x5½, an excellent size, gives fine bright and safe light; height, 10 inches ... ..... .90

## “Montauk” Incandescent Ruby Light

Electric light and plenty of it is what is wanted in all cases where electric current is available for dark room purposes.

This lamp has an inner amber incandescent bulb of 8 candle power, suitable for 110 volt current, which can be used alone for working gas-light papers; it also has an outside ruby globe to be screwed on when handling plates or bromide papers. The bulb fits the ordinary Edison electric light socket.

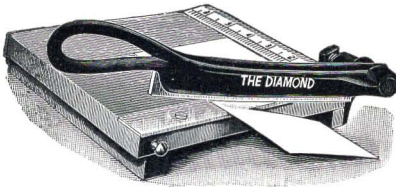


Price complete, \$1.50

Outer globe separate.....\$1.00 Inner globe separate.....\$0.75

Do not use on any but a 110 volt current.

# Print Trimmers



In order to give a print the best appearance it must be properly trimmed; and to insure the edges being perfectly straight and at true angles to each other it is necessary to use a print cutter.

The cutters we offer never fail to give a sharp, clean cut. They have a patent pivotal

spring joint which increases their accuracy and efficiency.

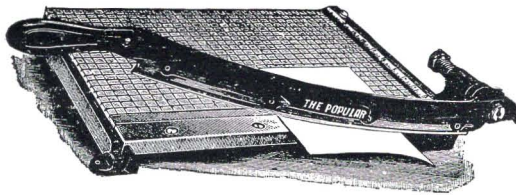
No. 1, "Diamond" Size, 6 inch blade	.....	\$1.25
No. 2, "Dandy" " 8 " "	.....	1.75
No. 3, "Studio" " 10 " "	.....	2.50
No. 4, "Monarch" " 12 " " with sliding joint and adjustable squaring gauge	.....	3.50

## The Popular Trimmer

"Popular" size, 15 inch blade.

The table is divided into  $\frac{1}{2}$ -inch squares which show very plainly. A really strong and exceptionally serviceable machine.

Price, \$7.00



## "Montauk" Trimming Board



This board, though inexpensive, will be found very satisfactory. The knife and cutting edge are of hardened steel and will cut prints with a clean, smooth edge. A rule is provided at the top for measuring and squaring prints.

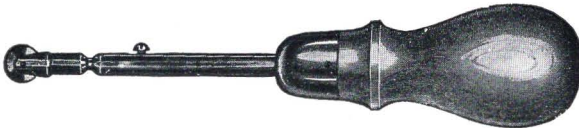
### Prices

No. 1—4x5 size, 40c.

No. 2—5x7 size, 60c.

No. 3—8x10 size, \$1.25

## "Prize" Trimmer No. 1



An improved form of trimmer with highly tempered extra large cutting wheel, having revolving or swivel motion, which will cut prints, wet or dry. A superior article at a low price.

Price, 60 cents



# Flash Lamps

## The "Spred-Lite" Flash Lamp



The "Spred-Lite" unites all the simplest principles of construction and is specially designed for use in confined positions where it is difficult to erect a stand lamp.

Beautiful photographs can be taken in your own home, giving natural expressions and surroundings, an excellent means of photographing children at play, animals and home scenes without a lot of preparation. A percussion cap is placed under the trigger, the flash powder is spread over the length of the trough. The lamp is then held above the head and set off by pulling the string.

No. 1—	Size of pan,	1½x12 inches,	wire trigger release.....	\$0.60
No. 2—	" " "	2½x15½ "	chain " " .....	2.00
No. 4—	" " "	2 x13½ "	wire " " .....	1.00
No. 5—	" " "	3 x19 "	chain " " .....	3.00
No. 6—	" " "	2½x24 "	chain " " .....	6.00

Professional size: pan in three sections with 2 reflector holders.

## The "Press" Flash Lamp

Is compact, thoroughly reliable and a safe apparatus for holding a compound of magnesium and other ingredients, with a percussion cap, making a light suitable for photographic purposes.

*It May Be Carried In The Pocket And Is So Constructed That The Cap Is Always Held In Place, Although The Lamp Is Not Loaded, And Cannot Be Fired Until The Instant You Are Ready For The Picture, When By An Ingenious Device The Trigger Is Set And The Lamp Fired Almost Instantaneously.*

Price \$3.50



## ACTINO FLASH CARTRIDGE

Composed of the Actino Flash Powder which won for itself the reputation of being a very rapid and powerful powder.

No. 12, size for 12 feet distance, box of 6.....	\$0.25
No. 18, size for 15 feet distance, box of 6.....	.40
No. 30, size for 30 feet distance, box of 6.....	.50

## LUXO FLASH CARTRIDGES

Small size, 6 in a box with fuses, 25c. box. Large size.....40c. box

## FLASH POWDERS

PRIZE, a clean burning powder of high actinic quality, per box.....	\$0.30
Per large box (equal to 4 small ones).....	1.00
NICHOL'S Portrait Powder, a very powerful and safe powder, per box.....	.30
VICTOR Flash Powder, very rapid, very energetic, per box.....	.35
Per large box (equal to 4 small boxes).....	1.20
LUXO, made after the new formula and very rapid, per box.....	.30
Per large box (equal to 4 small ones).....	1.00
Caps for igniting Flash Powder, per box.....	.05
Magnesium Ribbon, 1 oz. coils.....	.75



## “Harvard” Combination Tripods

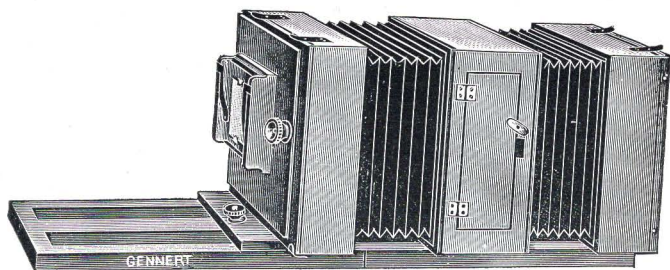
These tripods are well made of carefully selected spruce, maple or white ash; they are nicely finished and have brass fittings. The legs are detachable but cannot become separated when the stand is erected.

In the “Harvard” Tripods the top joint is hinged, while the bottom slides into the centre section for adjustment on uneven ground.

The tripod top is made of three-ply cross-grained wood to prevent warping.

### Prices

1—For Cameras up to 4x5, Weight 2½ lbs., Spruce.....	\$1.35
Maple .....	1.50
2½—For Cameras up to 5x7, Weight 2½ lbs, White Ash .....	2.75
3—For Cameras up to 8x10, Weight 4½ lbs., White Ash.....	3.25
4—For Cameras up to 14x17, Weight 7 lbs., White Ash.....	5.50



## “Prize” Lantern Slide Camera

**T**HIS instrument is in effect a miniature copying, enlarging and reducing camera and is constructed and finished in the best possible manner. The bed is of cherry, the body of the camera Mexican mahogany, and the bellows heavy rubber cloth.

It has a 36-inch bed composed of two parts and divided in the centre and a bellows extension the full length of the bed.

The front is removable and reversible—5x7 and smaller negatives are accommodated by means of kits. A kit for 4x5 and 3¼x4½ negatives is provided with the camera.

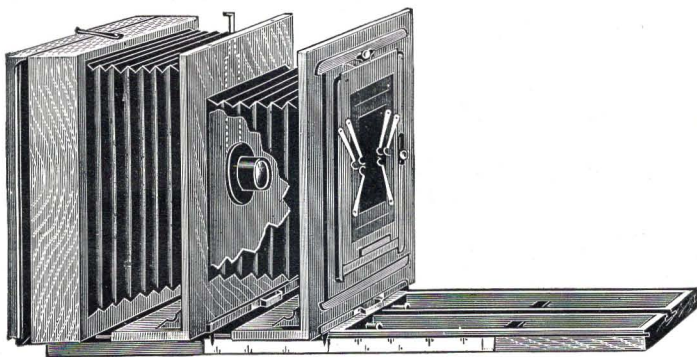
The central frame has the usual door in centre to give access to the lens and removable lens board; a clamp screw is provided to fasten the central frame in a fixed position.

The back which carries the plate holder for 3¼x4 plates is reversible and carries on its face an auxiliary back which has a shifting and revolving front. This camera can also be used as a 5x7 copying, enlarging and reducing camera or a 5x7 plain copying camera by securing an extra back taking a 5x7 holder, furnished at a slight additional cost.

There is a spring-actuated type ground glass frame, and the plate holders are double, with rubber slides.

### Prices

Camera with kits and double holder, \$18.00	Extra holders, 3¼x4, each \$0.50
Extra 5x7 back without holder..... 4.00	Extra 5x7 holders..... 1.00



## The New "Soldak" Camera

ENLARGES BY DAYLIGHT FROM 4x5 TO 16x20

THE "Soldak" is a complete "ready-to-use" and well balanced enlarger. It is well constructed of selected wood and consists of three upright frames supporting two bellows—a short one in front and a longer one in the rear. The front frame carries the negative from which the enlargement is to be made. The negatives may vary from the smallest size up to 8x10. Kits are furnished to hold the most popular sizes. The frame holding the negative is supplied with a lateral and vertical sliding motion, so that a subject not correctly centered in the negative can be brought into the proper position with respect to the lens.

To the central frame the lens is attached. It is fastened to a removable front board within the frame and is supplied with an exposing shutter in the form of a brass plate projecting through the top of the frame.

The Lens is a "Sylvar," an Anastigmat of the highest quality and efficiency. The rear frame carries the holder in which the paper for enlarging is placed; it resembles somewhat a printing frame but has an exposing slide facing the lens.

The Focusing Scale indicates the proper positions for the several parts of the camera to obtain sharp enlargements in sizes varying from  $1\frac{1}{2}$  to 4 times. The front and middle frames are supplied with pointers and screws so as to insure the proper position; a ground glass is supplied, however, for those that prefer to do their own focusing.

The Bed is 16x20 in two parts, fastened by hinges and made rigid by thumb screws. Fully extended it measures 48 inches in length. The 8x10 size has a 33-inch bed in two parts.

The "Soldak" can also be used as a copying camera by utilizing the rear part.

### PRICE LIST OF "SOLDAK" CAMERAS

"Soldak" for 16x20 enlargements, complete with holder and 6 inch "Sylvar" Lens .....	\$60.00
Camera without Lens or Focusing Scale.....	40.00
Extra 16x20 Holders .....	6.00
"Soldak" for 8x10 Enlargements, complete with Holder and 5 inch "Sylvar" Lens .....	40.00
Camera without Lens or Focusing Scale.....	20.00
Extra 8x10 Holders .....	3.00



# Imperial Manufactures

THERE are numerous varieties of Imperial Plates, each with the Imperial characteristics, as below, but differing in speed and special adaptability for the various kinds of work for which they are intended. The Imperial Characteristics are: (1) Freedom from fog; (2) Uniformity of quality; (3) Ease of working. These qualities have earned for the Plates a world-wide and enduring reputation, and a sale never equalled before by any British make. The various varieties are:

"SPECIAL SENSITIVE."—H. & D. 250 to 275. These plates are only slightly less rapid than the "Flashlight" brand, and are, therefore, particularly suitable for portrait photography and focal plane work where a plate sufficiently sensitive to permit of the most rapid exposures is essential. They yield fine, clean negatives with ample gradation and density.

"ORTHOCHROME."—These plates are specially manufactured to yield negatives giving a truer rendering in black and white of the relative color-values of blues, greens and yellows. (1) *Orthochrome Special Sensitive*—a very fast plate, H. & D. 275. It is the fastest Ortho plate on the market. (2) *Orthochrome Special Rapid*—the ideal plate for those who wish a color-corrected plate of the highest quality and of fairly high speed (H. & D. 200).

"ORTHOCHROME N. F."—These are the only Non-Filter plates in the world; they will give, *without a filter*, results equal to those obtained on the usual Orthochrome plate with a four-times filter. Their speed (200 H. & D.) is high enough to make them equally suitable for hand or stand camera use.

"SOVEREIGN."—These plates bear a strong resemblance to the "Special Rapid," the chief difference being that of speed. Their average speed number is 150 to 175 H. & D. For landscape work with the stand-camera these plates are particularly well suited. The latitude of exposure they possess is a property of especial value to the outdoor worker who has to deal with a wide variety of exposure.

"PROCESS."—As the name indicates, these plates are specially adapted and designed for use in connection with process-work, or for copying drawings, maps, plans and engravings. They are also well suited for making positives or transparencies from negatives through the camera. They possess a fine grain, are free from fog, and give a clean, bright, sparkling result, with ample density. Their H. & D. speed is 12 to 15.

"LANTERN" (Special).—These plates have a fine grain, and give clean and bright results, free from fog, and with abundant detail in the shadows. They can be used either for contact-printing or with lens and camera. They are useful not only for lantern-slide making, but in larger sizes for making transparencies for the window and other similar decorative purposes. They yield black or slightly warm-black tones by normal development. H. & D. speed about 5.

BACKED PLATES.—The advantage gained by the use of backed plates in cases where halation is apt to cause trouble has long been recognized. All the foregoing Imperial plates can be obtained ready backed.

# Imperial Plates



THAT BROWN BOX  
WITH  
RED LABEL

IN offering the Imperial Plates we do so in the full conviction that they are the finest it is possible to obtain. The Imperial Dry Plate Co. make perhaps a larger assortment than any other factory, but, strange as it may seem, each particular brand or kind has true merit not easily duplicated in plates of other manufacture. Please note that the sizes under each brand are the priced sizes carried in stock; other sizes may be had to order.

		P R I C E P E R D O Z E N							
		S.S.	S.S. Ortho	N.F.	S.O.X.	Process	X-Ray	S.S. Backed	N.F. Backed
45 x107 mm.	Thin Glass	.40	—	—	—	—	—	—	—
4½ x 6 cm.		.30	—	—	—	—	—	—	—
6 x 9 cm.		.40	—	—	—	—	—	—	—
6½ x 9 cm.		.40	—	—	—	—	—	—	—
9 x12 cm. ....		.60	—	.60	—	—	—	.90	.90
13 x18 cm. ....		1.10	—	1.10	—	—	—	1.40	1.40
3½ x 4½ in. ....		.45	.45	.45	.45	.45	—	.60	.60
3½ x 5½ in. ....		.65	.65	.65	.65	.65	—	.90	.90
3½ x 5½ in. ....		.65	—	—	—	—	—	—	—
4 x 5 in. ....		.65	.65	.65	.65	.65	—	.90	.90
4½ x 6½ in. ....		.90	.90	.90	.90	.90	—	—	—
5 x 7 in. ....		1.10	1.10	1.10	1.10	1.10	1.10	1.40	1.40
5 x 8 in. ....		1.25	—	—	—	—	—	—	—
6½ x 8½ in. ....		1.65	1.65	1.65	1.65	1.65	1.65	2.10	2.10
8 x10 in. ....		2.40	2.40	2.40	2.40	2.40	2.40	3.00	3.00
10 x12 in. ....		4.20	—	—	—	4.20	4.20	—	—
11 x14 in. ....		6.00	6.00	6.00	6.00	6.00	6.00	7.50	7.50
14 x17 in. ....		9.00	—	—	—	9.00	9.00	—	—
10 x16 in. ....		6.65	—	—	—	—	—	—	—
12 x20 in. ....		12.00	—	—	—	—	—	—	—
14 x20 in. ....		13.00	—	—	—	—	—	—	—

## “Chloralla” Developing Paper

“CHLORALLA” is an excellent developing paper possessing many qualities far in advance of any developing paper on the market. It is coated on imported raw stock in a number of surfaces and three grades of emulsion adapted in chemical quality and speed to any negative.

“Chloralla” paper is made in three speeds: Contrast, Normal and Soft; three grades—Semi-Matt, Matt and Glossy; Regular and Double Weights.

“Chloralla” *Contrast* is the ideal paper for finishing amateur work, and for any purpose where a rich emulsion with strong contrasts is wanted to improve results from negatives too soft or thin.

“Chloralla” *Normal* is of medium speed and gradation, suitable for all-around work from well-balanced negatives.

“Chloralla” *Soft* is a rapid, soft-working paper, suitable for portrait work and prints from contrasty negatives.

### Price List

#### REGULAR WEIGHT

Size	Dozen	Gross
2½x 3½ .....	\$0.12 .....	\$0.90
2½x 2½ .....	.12 .....	.90
2½x 3½ .....	.12 .....	.90
2½x 4½ .....	.12 .....	1.00
2½x 4½ .....	.12 .....	1.00
3 x 4 or 3½x3½ .....	.12 .....	1.20
3½x 4½ .....	.12 .....	1.20
3½x 3½ .....	.12 .....	1.25
3½x 4½ .....	.14 .....	1.30
3½x 5½ .....	.15 .....	1.50
3½x 5½ (Cabinet) .....	.15 .....	1.50
4 x 5 .....	.15 .....	1.50
4½x 5½ .....	.18 .....	1.75
4½x 5½ .....	.20 .....	1.80
4 x 6 .....	.20 .....	1.80
4½x 6½ .....	.25 .....	2.50
5 x 7 .....	.30 .....	3.00
5 x 8 .....	.35 .....	3.50
6 x 8 .....	.45 .....	4.50
6½x 8½ .....	.50 .....	5.00
7 x 9 .....	.55 .....	5.70
7½x 9½ .....	.60 .....	6.30
8 x10 .....	.65 .....	6.60



Size	Dozen	Gross
9 x11 .....	\$0.80.....	\$8.25
10 x12 .....	.90.....	10.15
11 x14 .....	1.25 .....	13.15
14 x17 .....	1.90.....	20.25
16 x20 .....	2.40.....	27.00
18 x22 .....	3.00.....	34.50
20 x24 .....	3.60.....	39.00

10-ft. rolls (25 in. wide) roll.....\$2.00

10-yd. rolls (25 in. wide) roll ..... 5.00

Grosses packed in half gross packages

#### DOUBLE WEIGHT

Size	Dozen	Gross
3 x 4 or 3½x3½.....	\$0.15.....	\$1.50
3½x 4½ .....	.15.....	1.50
3½x 5½ (Cabinet) .....	.25.....	2.00
4 x 5 .....	.25.....	2.00
4 x 6 .....	.25.....	2.00
4½x 6½ .....	.30.....	2.80
5 x 7 .....	.35.....	3.50
5 x 8 .....	.40.....	4.00
6 x 8 .....	.50.....	5.00
6½x8½ .....	.60.....	6.00
7 x 9 .....	.65.....	7.00
7½x 9½ .....	.75.....	8.00
8 x10 .....	.80.....	9.00
9 x11 .....	1.00.....	11.00
10 x12 .....	1.20.....	13.50
11 x14 .....	1.60.....	17.50
14 x17 .....	2.40.....	27.00
16 x20 .....	3.20.....	36.00
18 x22 .....	4.00.....	46.00
20 x24 .....	4.80.....	55.00

10-ft. rolls (25 in. wide) roll.....\$2.25

10-yd. rolls (25 in. wide) roll ..... 6.00

## “Chloralla” Postals

HARD, NORMAL AND SOFT

Dozen.....\$0.15    Gross.....\$1.50    1000.....\$10.00

Half grosses furnished at gross price

# Ensign Roll Films

DOUBLE INSTANTANEOUS—NON-CURLABLE—ORTHOCHROMATIC

Recommended to earnest workers who wish to be certain of obtaining superior results under trying conditions.

<i>Film</i>	<i>Size of Picture</i>	<i>Will Fit Cameras</i>	<i>6 Exp.</i>	<i>12 Exp.</i>
1½ in.	1½x2 in.	Pocket Kodak		25c.
Ensignette	1½x2½ in.	On Special Spools for Ensignette Camera	25c.	
1½ in.	1½x2½ in.	No. O Folding Pocket Kodak, No. O Graphic	15c.	25c.
Ensignette No. 2	2x3 in.	No. 2 Ensignette Camera	25c.	
2½ in. A	2½x2½ in.	No. 1 Brownie	15c.	
2½ in. B	2½x3½ in.	2¼ in. Box Ensign, 2¼ in. Ensign Jr. No. 2 Brownie, No. 2 Folding Brownie No. 2 Buster Brown, No. 3 Buster Brown No. 1 Folding Buster Brown Baby Al-Vista	20c.	
2½ in. C	2½x3½ in. 2½x7 in.	No. 1 Folding Pocket Kodak No. 1 Panoram Kodak	20c.	40c.
2½ in.	2½x4½ in.	2¼ in. Box Ensign, 2¼ in. Ensign Jr. No. 1A F. P. K. Special, No. 1A F. P. Kodak Anso Junior, No. 2A Brownie, No. 1A Graflex No. 1A Speed Kodak, No. 1A Fold. Hawk Eye No. 2A Buster Brown, No. 2A Folding Brownie	25c.	50c.
3½ in.	3½x4½ in. 3½x6½ in.	3¼ in. Ensign, 3¼ in. Ensign Jr., 3¼ Box Ensign No. 3 F. P. K., No. 3 Fold. Weno, No. 3 Focusing Weno, No. 4 Anso, No. 6 Anso, No. 2 Anso Stereo Weno, No. 1 and 2 Stereo Hawk Eye No. 5 Weno, No. 3 Folding Hawk Eye	35c.	70c.
3½ in. B	3½x4½ in.	No. 3 Brownie, No. 3 Folding Brownie No. 3 Bulls Eye	35c.	70c.
3½ in. A	3½x5½ in.	Post Card Ensign, Post Card Ensign Jr. No. 3A F. P. K., No. 9 Anso, No. 10 Anso No. 3A F. P. K. Special, No. 3A Graflex No. 3A Folding Brownie, No. 7 Weno No. 3A Folding Hawk Eye	40c.	10 Exp. 70c.
3½ in. C	3½x5½ in.	No. 3B Quick Focus Kodak, Stereo Brownie No. 3A Anso	40c.	10 Exp. 70c.
3½ in.	3½x3½ in. 3½x7 in.	No. 2 Bullet, No. 2 Bullet Special, No. 2 Bulls Eye, No. 2 Bulls Eye Special, No. 2 F. P. Kodak No. 1 Anso, No. 3B Al-Vista, No. 2 Flexo Kodak, No. 2 Stereo Kodak, No. 2 Weno, No. 3 and 4 Stereo Hawk Eye	30c.	60c.
4 in.	4x5 in.	No. 4 Bullet, No. 4 Bulls Eye No. 4 Bulls Eye Special, No. 4 Folding Weno, No. 4 Focusing Weno, No. 4B Al-Vista, No. 4 Panoram Kodak No. 4 Weno, No. 3, No. 5 and No. 7 Anso	45c.	10 Exp. 75c.
4 in. A	4x5 in.	No. 4 F. P. K., No. 4 Screen Focus Kodak No. 4 Folding Hawk Eye	45c.	90c.
4½ in.	4½x3½ in.	No. 3 Cartridge Kodak	35c.	70c.
4½ in. A	4½x6½ in.	No. 4A F. P. Kodak, No. 4A Speed Kodak	65c.	
5 in.	4x5 in.	No. 4A Cartridge Kodak, No. 5B Al-Vista No. 5D Al-Vista	45c.	90c.
7 in.	7x5 in.	No. 5 Cartridge Kodak, No. 7D Al-Vista No. 7E Al-Vista	80c.	\$1.60



