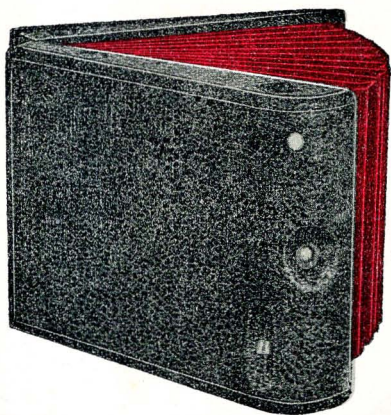


Kozy Camera



Company

MANUFACTURERS,
Boston, Mass. U.S.A.

Kozy Camera Company

(Incorporated)



Manufacturers of

and Dealers in

Cameras and

Photographic

Supplies

Office

24 Warren Street, Boston, Mass.

U. S. A.



THE WAYSIDE INN, SUDBURY, MASS

“ As ancient is this hostelry
As any in the land may be,
Built in the old Colonial day,
When men lived in a grander way,
With ampler hospitality.”

LONGFELLOW, “Tales of a Wayside Inn.”

Taken with a Kozy Camera.

The Pocket Kozy is

Small in size.

Compact in form.

Light in weight.

Unique in design.

Novel in construction.

Attractive in appearance.

Small? because it measures only $1\frac{3}{4}$ x $4\frac{5}{8}$ x $5\frac{3}{4}$ inches.

Compact? because it is the smallest camera ever made taking a $3\frac{1}{2}$ x $3\frac{1}{2}$ picture on cartridge film.

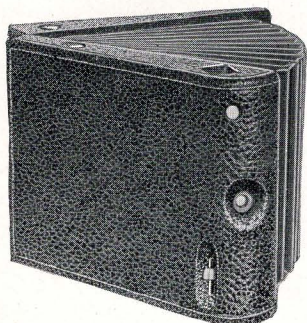
Light? because it has no heavy glass plates or plate-holders, and weighs only sixteen ounces.

Unique? because it stands alone as the only camera of its kind.

Novel? because it includes features of construction never before used in any other camera.

Attractive? because it is high grade and made of the best material and workmanship throughout.

Pocket Kozy Camera (film).



THE POCKET KOZY takes square pictures 3 1-2 x 3 1-2; capacity, twelve exposures without reloading. The size of the Pocket Kozy is 1 3-4 x 4 5-8 x 5 3-4, weight sixteen ounces, length of focus 4 1-2 inches, is strictly a film camera, and uses the cartridge film system.

The outside appearance of the Pocket Kozy is unique and attractive. It is covered with the best quality of black pebble morocco leather; the small winding key is highly nickered. The

bellows is made of the best selected skin, and, when the camera is closed, is absolutely safe against damage of any kind.

The lens is single achromatic, and each one is carefully selected and tested, great care being taken that this vital point should be as near perfection as is possible, in order to give clear, sharp results.

The cameras are all universal focus; in other words, the lens is fixed for all pictures alike, and does not have to be moved backwards and forwards as in the larger makes of cameras.

The lens is fitted with a slide in which are three different sized diaphragms, used to regulate the exposure.

The shutter is one speed, and is designed and made expressly for this camera, and is absolutely simple and sure in action. It does not require to be set, but is always ready to make either time or instantaneous exposures. We have incorporated into our design a peephole by which the number of the exposure can be seen on the black paper back of the sensitive film as it

is rolled by the opening, thus doing away with any complicated registering device.



The lens is at one end of the swinging sides of the box, and directly over this is set a clear finder, placed at the same angle as the lens. The act of swinging round one side of the box opens the bellows and brings the lens into a parallel plane with the film. When the lens is exactly in focus the sides of the camera lock automatically and the picture is ready to be taken.

To close the camera it is only necessary to press an invisible push button which releases the catch, and the box closes without apparent effort. The method of loading this camera is simple in the extreme.

When the full cartridge is placed in the camera and the end of the black paper is pulled off, the roll-holder, which is swung in the centre, is revolved completely round while the end of the black paper is retained in the hand. When the roll-holder has reached its original position, the loose end of the paper is ready to be tucked into the empty receiving spool. This will complete the loading.

Pocket Kozy —unloaded \$10.00

Pocket Kozy Leather Carrying Case . 1.50

Including Bicycle Attachment.

12 Exposure Daylight Film, per roll . .60

Kozy Carrying Cases.

Although the Kozy can be slipped into the pocket, still there are many times in the spring and summer when the bicyclist wears no jacket; at such times it is necessary to carry the camera in a safe and convenient place, therefore we have provided for this purpose carrying cases in both cloth and leather, which come supplied with special attachment for the bicycle, adapted for either a diamond or drop frame. The camera can be removed instantly without detaching the case from the frame.

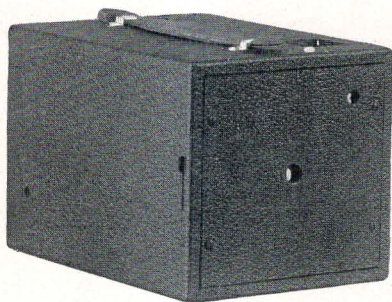
When it is desired to use the case independent of the wheel, it is only necessary to remove the bicycle fastenings and attach the long shoulder strap, which operation is but the work of a moment. These cases are well made, and are useful even when not carrying the camera, as many small articles can be stowed away, which would otherwise be an inconvenience on the wheel or a drag in the pocket.

The compactness, neat appearance and low price of these cases have made them sell with almost every camera we send out. The leather case especially is made for constant use and hard wear in all kinds of weather. A good case will save your camera many hard knocks.

In leather, for Pocket Kozy \$1.50

Including Bicycle Attachment.

Description of the Bedford No. 1.



THE BEDFORD No. 1 is introduced by us to satisfy a growing demand for a camera at a reasonable price, and still be in its vital points equal to cameras of much higher price.

We have taken great pains to simplify the Bedford Cameras so as to make the understanding of them easy for the novice; and these points, combined with their superior picture-taking qualities, make them valuable to all alike.

The Bedford No. 1 is of box form, and made especially for taking daylight-loading film in cartridge form; measures 4 1-4 x 4 1-2 x 6 inches, and weighs eighteen ounces. Its outside appearance is very attractive and of the best workmanship. The finder on the top is brilliantly illuminated, showing the picture distinctly, and measures one inch square.

The shutter is adapted for both time and instantaneous exposures, and is of an entirely new and simple construction; the lens and working parts of the shutter are easily accessible by removing the front board, and this also allows the lenses to be easily cleaned and kept free from dust. The size of the pictures is 3 1-2 x 3 1-2, and the camera can be loaded for either



six or twelve pictures without the aid of any dark room or other contrivance other than the cartridge itself.

In the rear of the camera a peep-hole is supplied to see the numbers of the exposure when the film is rolled from one picture to the next.

Our Bedford Cameras are supplied with the revolving roll-holder which has proved such a success and which is more fully explained under the description of our Pocket Kozy Camera. By this extremely simple device the loading of these cameras is quickly and easily done. We have made a special effort to have the lens in this camera of the best quality, and the results are thus assured of a quality, depth, and sharpness of picture far ahead of the average camera of this price. The Bedford No. 1 is carefully packed, and accompanying each is a novelty in the way of an instruction book which is illustrated by as many as fifteen pictures, showing in the simplest manner the method of loading, etc.

Bedford Camera No. 1, unloaded	.	.	.	\$5.00
Cartridge Film for twelve pictures60
Cartridge Film for six pictures30
Developing and Printing Outfit	.	.	.	1.50
Blue Print Outfit75

Description of the Bedford No. 2.



THE BEDFORD No. 2 is also of box form, and measures and weighs the same as in No. 1, but for those who are more particular and desire a higher grade of camera, we have, at a small additional cost, supplied this box with the Kozy Shutter and its three diaphragms;

and, by an extremely simple arrangement of pulling out or pushing in the shutter release, time or instantaneous pictures can be taken. We have a lens in this No. 2 which has been made to meet special requirements of this camera alone, and we believe there is none superior.

The camera is covered with the best quality of seal grain leather, with handle, peep-hole, finder, and revolving roll-holder, and is also like the No. 1 accompanied by an illustrated instruction book, giving full particulars.

Bedford Camera No. 2, unloaded	. . .	\$7.00
Cartridge Film for twelve exposures60
Cartridge Film for six exposures30
Developing and Printing Outfit	. . .	1.50
Blue Print Outfit75



The Cartridge System.

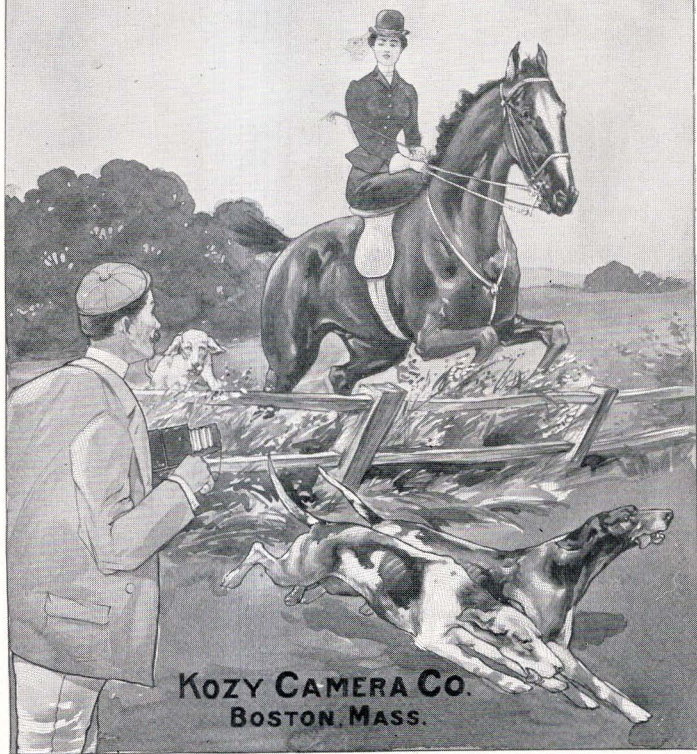
The Kozy Camera is designed to use the cartridge film system. This cartridge is a sensitive strip of film put up in light tight rolls, and may be inserted in the camera in broad daylight. Extending the length of the strip of film, and several inches beyond each end, is a strip of black paper, which keeps the light from striking the film. After inserting the cartridge in the camera, the door is closed and the key turned until the black paper has been reeled off and the sensitive film is brought into place.

This black paper is marked at proper intervals in white with the number of the section of film, from one to twelve. In the back of the camera is a small peep-hole, through which the figures appear as the key is turned. These figures indicate just how far to turn the key and how many exposures have been made. After reaching twelve, a few turns of the key entirely covers the film with black paper and the camera may be unloaded with perfect safety in broad daylight.

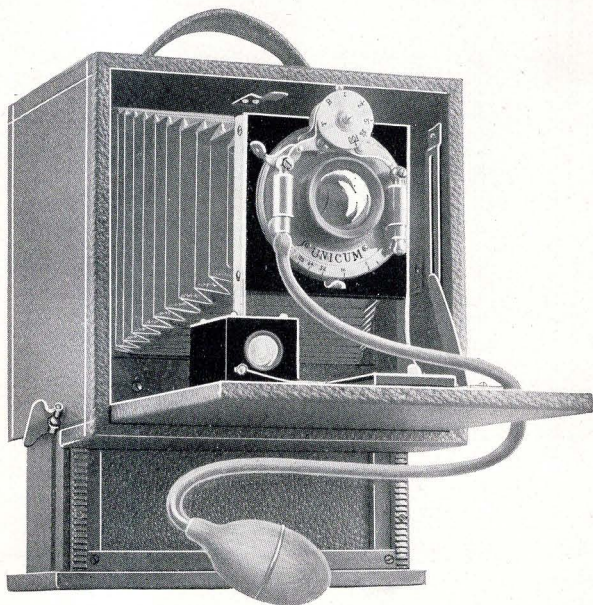


Chase

MAGAZINE CAMERA



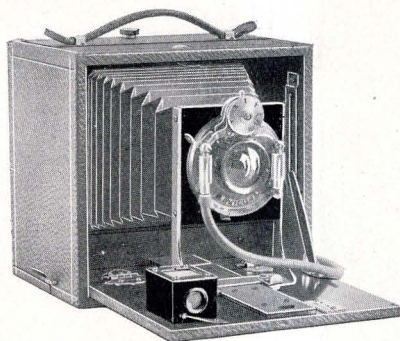
KOZY CAMERA CO.
BOSTON, MASS.



Chase folding Magazine Camera.

4 x 5 and 5 x 7.

Description.



The continually increasing demand for magazine plate cameras has made it necessary for us to put on the market a camera that we are sure meets the requirements of all those who wish only the best, both in the article used and the results accomplished.

Our Chase Camera is without question the most compact form of plate magazine camera yet produced; the peculiar construction of the box allows this, but at the same time it is simple, and there is nothing to get out of order or make the results doubtful.

In the construction of this camera special attention and thought were given to three points:

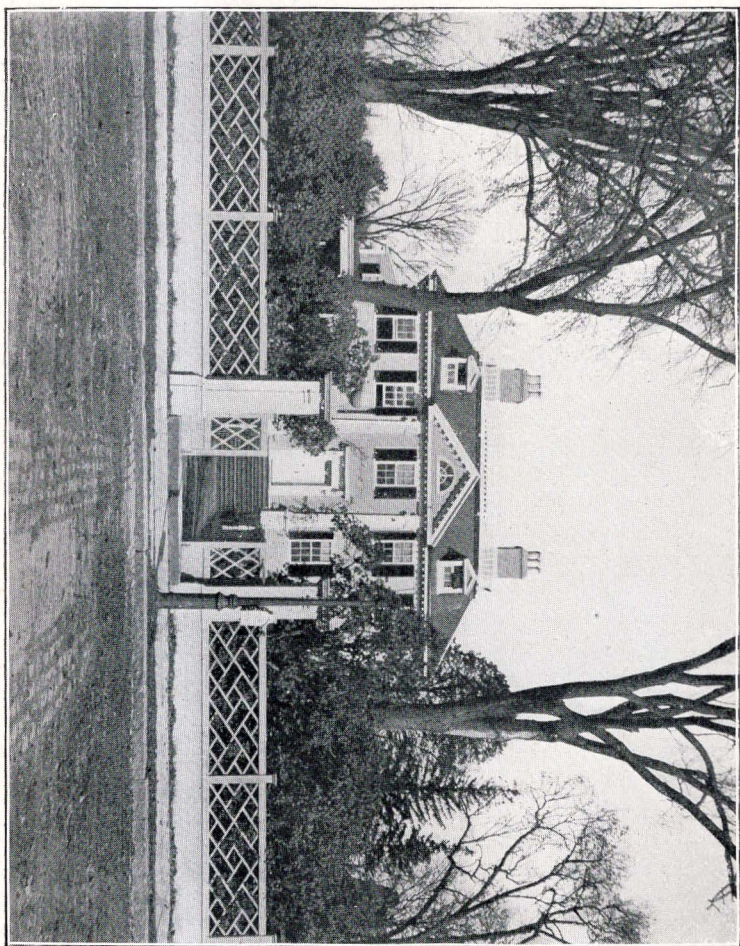
First, that everything should be of the best.

Second, that its simplicity and ease in working should bring assured results.

Third, that the box should be *smaller* than any other 4 x 5 magazine plate camera on the market, and should be entirely complete in itself.

The outside measurements of the 4 x 5 are 4 5-8 x 6 x 6 1-4 and it takes twelve plates. The box is of the popular drop front style with extension bellows and clamping device for focusing scale.

A reversible finder box allows the picture to be taken either way on the plate.



The boxes are made of mahogany throughout, leather covered outside and polished inside, all metal parts highly nickeled.

Tripod screws on both sides of the box, and an automatic registering device for showing the number of exposures. We can furnish either double or single lens, and all cameras are fitted with the famous Unicum Shutter. This shutter is provided with all the points necessary for the highest grade of work, having the Iris Diaphragm, automatic exposures from one-hundredth of a second to a second, also a bulb and time exposures.

The construction of the camera allows the plates to be changed very rapidly and at the same time there is no waste space inside the box. The method of dropping the exposed plate and transferring it to the rear is entirely new and the simplest device in use, and never fails in operation.

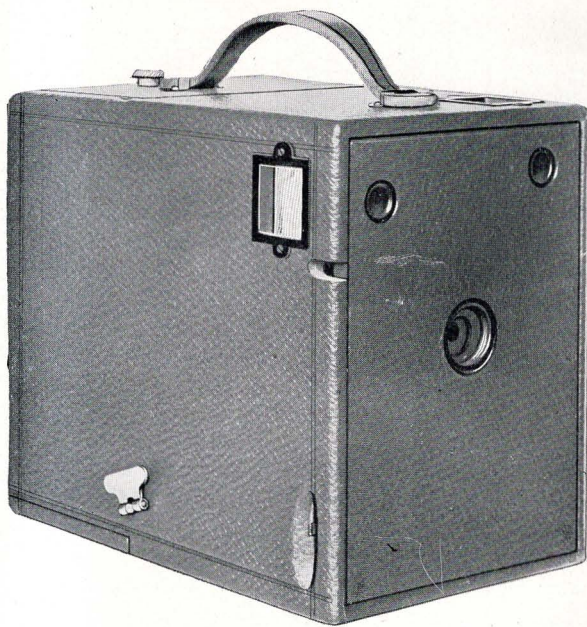
All parts of this camera are what is commonly termed high grade, as we have not spared any expense in making this the best magazine camera on the market.

Each magazine camera is fitted with a full set of twelve aluminum holders, and in both sizes we have used aluminum in all the metal parts whenever it is practicable, thus reducing the weight to the minimum.

Every camera is exactly as represented, and is guaranteed throughout. In the hands of an ordinarily careful operator the most remarkable results have been obtained, and the simple working of the mechanical parts have proved more than satisfactory.

4 x 5 Folding Magazine Camera . . .	\$20.00
--	----------------

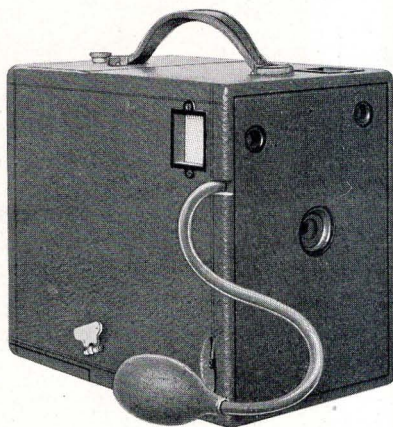
5 x 7 Folding Magazine Camera . . .	30.00
--	--------------



Chase Box Magazine Camera.

3 1/4 x 4 1/4 and 4 x 5.

Description.



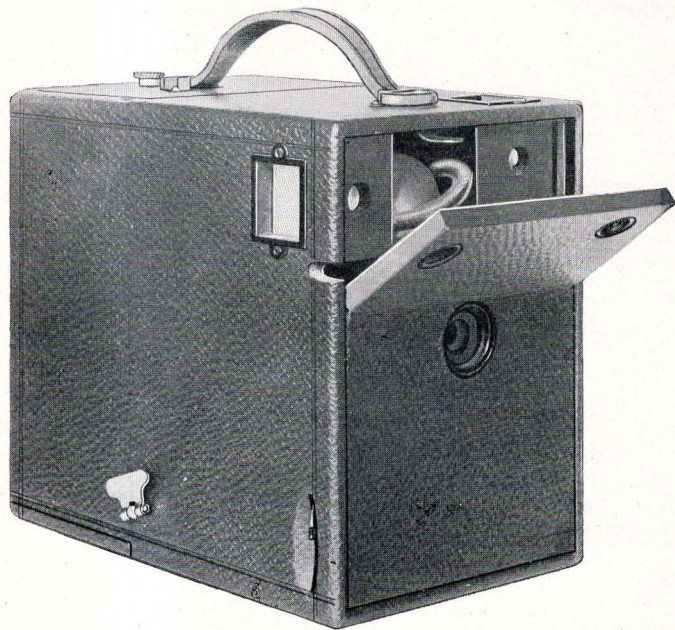
Heretofore, in the construction of magazine cameras, the manufacturer has never been able to get over one very serious difficulty, — that of producing an absolutely reliable plate-changing device. The chief point of superiority in the Chase is that in it we have surmounted this difficulty, and have made it impossible to miss changing a plate, or to move two at a time, or to otherwise act as it should not do. Another novel feature of our construc-

tion is that the plates cannot possibly be fogged by reflected light, as is, unfortunately, of only too common occurrence with many of the ordinary magazine makes.

To describe the construction in detail we would first call attention to the extreme compactness.

The magazine holds twelve plates, and is furnished with twelve aluminum holders. Our furnishing these holders free with the camera saves the purchaser from the necessity of buying them extra, which is the point which increases the price of ordinary plate cameras.

Wherever possible, aluminum has been used for the metal parts, with the result that the box is remarkably light, thus overcoming another of the great objections to a magazine camera.



The lens is the finest single achromatic which money can buy, and is of the fixed focus type.

The rotary shutter, especially made for this box, is an unusually efficient one, whose extreme simplicity and perfect workmanship makes it practically impossible to get out of order. It sets automatically, therefore is always ready for exposure. It can be released either by a finger lever on the side or by a pneumatic bulb, which, when not in use, is kept in a section inside the camera without having to be detached from the shutter. This feature of providing a place for the bulb is only seen on the Chase Camera.

The three diaphragms, which cover all desired degrees of exposure, are controlled by a wheel on the side of the box, giving great ease of adjustment.

Two large clear finders allow the pictures to be taken either in an upright or a horizontal position.

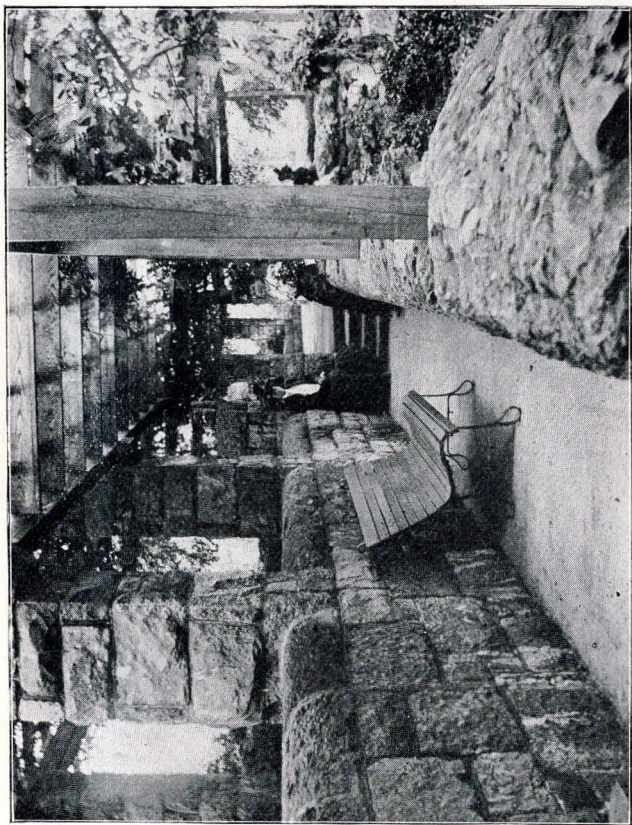
The box is leather covered, equipped with an extra heavy handle, and is made throughout in the best possible manner, both in regard to material and workmanship.

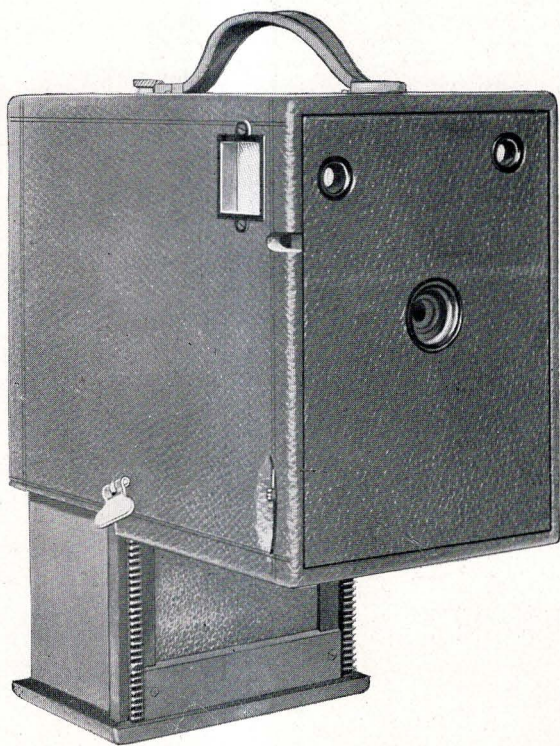
Two tripod screws are placed in each camera, and are so arranged that they do not interfere in any way with the working of the magazine.

The combination of these several important features makes the Chase Magazine Box Camera the handsomest and best all-round camera of this type on the market.

3 1-4 x 4 1-4 Chase Box Magazine Camera . \$ 8.00

4 x 5 Chase Box Magazine Camera . . . 10.00







A few facts for Beginners.

All Plates and Film are coated on one side with a sensitive substance, and cannot be opened and exposed to daylight without making them absolutely worthless, therefore a dark room is necessary to transfer them from their original box or wrapper to the plate-holders.

A **Dark Room** should be dimly lighted with a red lamp, just enough light to see what you are doing. Not a bit of daylight or glow from the stove, gas, lamp, or other white light.

The dull side of the glass plate is the sensitive side on which the picture is taken.

After Exposure in the camera, the plates must remain in the plate holder or in the dark room until they are *developed* and *fixed*.

You cannot see any picture on the plate until it is developed.

Developing means the chemical process of bringing the picture into view on the sensitive plate.

Fixing means preparing the picture on the plate so that it will remain permanently.

After Developing and Fixing, the plate can be taken out into daylight without harm, and is now called a *negative*.

Washing the negative can be done without harm in daylight.

Negatives are used to make the printed photographs, and can be used indefinitely without injury.

Full directions for developing, fixing, printing, and toning are sent with every outfit.

Printing Paper is sensitive to strong light. The toning and fixing of prints, after they have been made from the negative, can be done in subdued light.

Printing is done in strong sunlight.

The above general facts apply to film as well as glass plates, except with Daylight Loading Film in cartridge form, which requires no dark room to load or unload the camera.

These films, however, should never be unrolled except through the camera while taking pictures, and if mailed away to be developed, should always go on the spool on which they are wound.



Prices for 1901.



After careful consideration we have decided not to issue a new catalogue for this season, but have had printed up another edition exactly like those used last year.

Our only reason for doing this is to show to everyone the great reduction we have made in our prices over those of last season.

Our line of cameras comprises practically the standard goods we have made for several years and which have given such universal satisfaction.

Ours are standard goods of tested merit. We do not believe in putting out impracticable novelties to catch the inexperienced.

For 1901 the prices on our line represented in this catalogue are as follows:

The Pocket Kozy,	\$6.00 loaded,	reduced from \$10.00 unloaded.
Kozy Leather Case,	1.00	" 1.50
Kozy Cloth Case,	.50	" 1.00
Bedford No. 1,	3.00 loaded	" 5.00 unloaded.
Bedford No. 2,	5.00 loaded	" 7.00 unloaded.
Lux Plate Camera,	3.00 and box plates	" 5.00 without plates
Chase 5 x 7 Folding,	18.00	" 30.00
Chase 4 x 5 Folding,	12.00	" 20.00
Chase 3½ x 4½ Box,	6.00	" 8.00
Chase 4 x 5 Box,	8.00	" 10.00

~~~~~  
**Kozy Camera Co.,**

**24 WARREN STREET, BOSTON, MASS.**