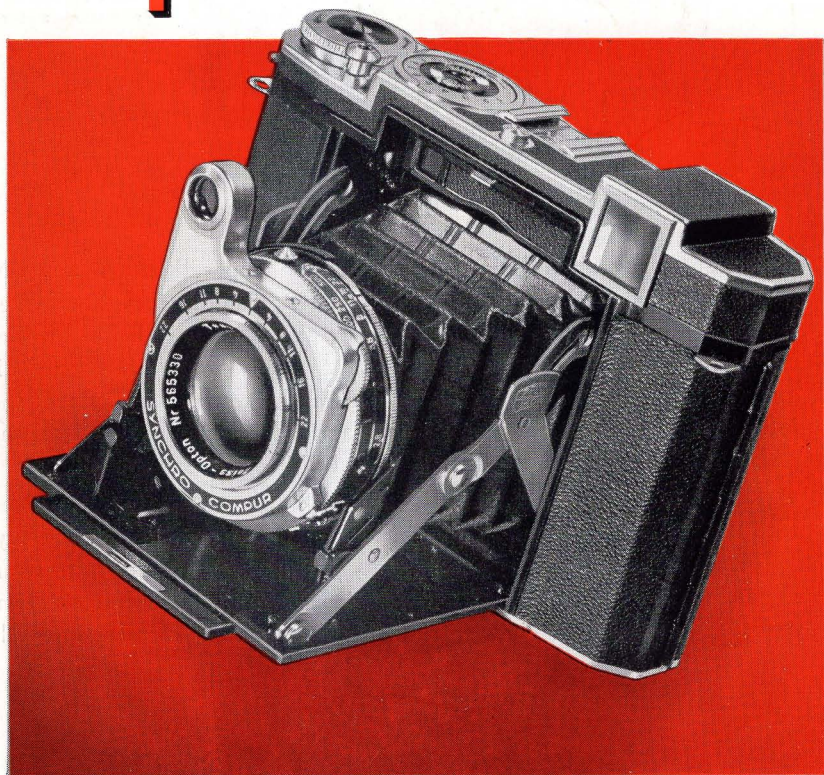


Zeiss Ikon **Super Ikonta B**



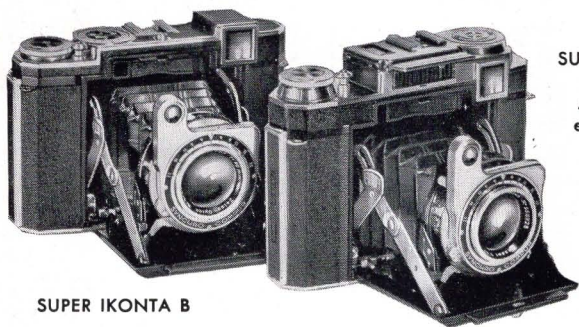
2 1/4 x 2 1/4" AUTO-FOCUSING CAMERA

Super Ikonta BX has built-in Exposure Meter



Zeiss Ikon

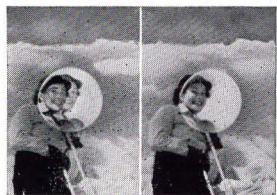
SUPER IKONTA 2 $\frac{1}{4}$ x 2 $\frac{1}{4}$ "



SUPER IKONTA BX
with built-in
ASA-calibrated
exposure meter

Foremost among all roll-film cameras are the Super Ikonta B and BX. Based on a 90-year tradition of fine camera-making, they are indeed masterpieces of camera design and construction. Optically as well as mechanically! **THE ZEISS OPTON TESSAR LENS** of f/2.8 aperture is universally recognized as unrivaled for advanced work. It is T-coated and fully corrected for color as well as black-and-white photography. Its speed of f/2.8 is 2 $\frac{1}{2}$ times faster than f/4.5 and 8 times faster than f/8.

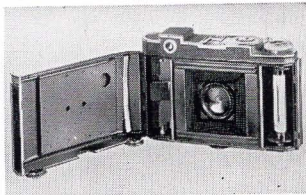
THE OPTICAL RANGE-FINDER is built into the camera body. Coupled with the lens, it has a long base which contributes to focusing accuracy. Its principal component is a solid glass prism which assures permanent alignment, as against the less expensive but unreliable mirror construction employed in cheaper cameras. The critical focusing possible



When double image in range-finder (left) is superimposed (right) the lens is accurately focused on the subject.



Figures on lens and shutter mounts, visible from above, show distance focused, depth of field, diaphragm stop and shutter speed.



Hinged back opens easily. Loading is very simple with 120 roll-film.

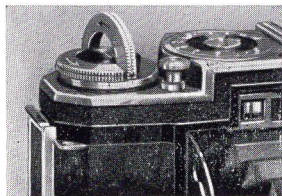
with this range-finder permits you to fully utilize all the splendid optical properties of the Zeiss Tessar lens. You may focus and expose with the lens wide open, and thereby use the maximum speed of the lens. A real boon in sport and candid photography. Perfect for obtaining high quality color transparencies.

THE VIEW-FINDER and the range-finder are combined. You look through one eyepiece for composing the picture and focusing. No need to shift the camera or your eye. Easy, simple, fast.

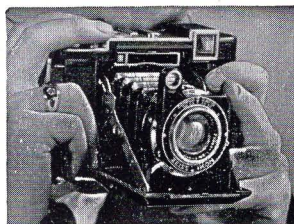
THE SYNCHRO-COMPUR SHUTTER — with speeds from 1 to 1/500 second, and bulb — is accurate and dependable. A built-in self-timing device delays the exposure about ten seconds to permit self-portraiture at speeds from 1 sec. up to 1/250. *The shutter is fully synchronized for flash and strobe (MX) throughout the entire range of speeds.*

THE OPERATION of both models is fast and accurate. Loading is as simple as with any roll-film camera. Film winding, by means of the milled key, stops automatically when the film is in position for the next exposure — no need to refer to the red window. *The automatic lock to prevent accidental double exposure and blanks* is a most welcome feature. Pressure of a button snaps either model open and in position for immediate picture-taking. Shutter speed and lens diaphragm settings are visible from above and at your finger-tips. They can be set without turning the camera. The shutter release is located on top of the camera body to assure perfect ease, convenience and steadiness of operation. The picture counter is located on top of the camera.

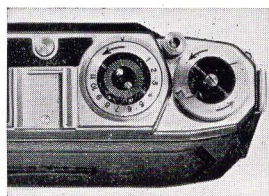
THE SQUARE FORMAT $2\frac{1}{4}'' \times 2\frac{1}{4}''$ of the negative is practical for album prints and for enlarging. It makes composition easy, and the camera



Winding key stops automatically when film is in position; shutter release is conveniently placed.



One-finger adjustment of milled wheel automatically focuses lens as range-finder images are superimposed.

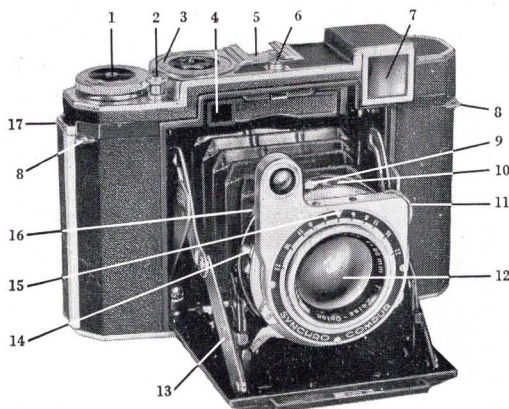


Counter disc of the B which shows automatically the number of exposures made.

may always be used in its upright and most convenient position. There is no need to turn it for a vertical picture.

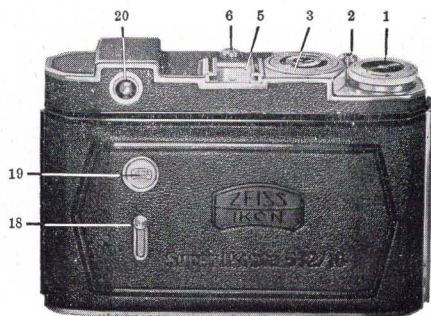
FILM. The Super B makes 11 negatives, and the BX 12 negatives, on standard 120 roll-film. This is the most popular of all roll-film sizes and fresh film is readily available everywhere in a wide variety of emulsions, black-and-white and color.

THE BODY of both cameras is of sturdy all-metal construction, attractively finished in black leather and chromium trim. Small, compact and light. It has a tripod screw at the bottom. A shoe on top of the camera permits the use of accessories. Lens mounts take 37 mm. slip-on filters, which may be left on when the camera is closed. Furnished with Eveready Carrying Case of brown top-grain cowhide leather with shoulder strap.



1. Film winding key
2. Shutter release button
3. Picture counter
4. Part of distance meter
5. Accessory shoe
6. Button for opening camera
7. Window for the viewfinder-distance meter combination
8. Eyelets for carrying strap
9. Button for delayed action release
10. Shutter speed setting scale and diaphragm setting scale
11. Focusing disc for distance meter and lens

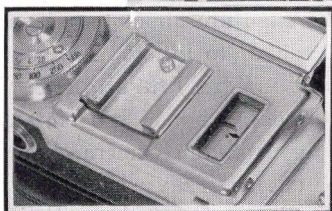
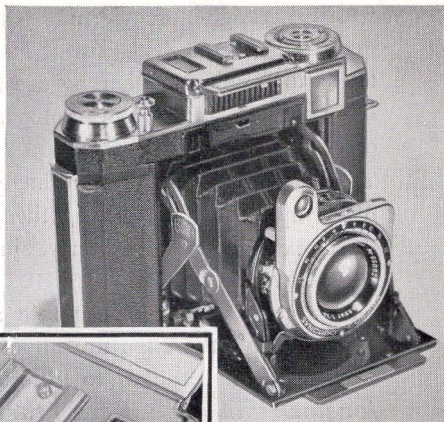
12. Lens
13. Struts holding camera front
14. Flash socket connection
15. Indicator for distance scale
16. Shutter cocking lever
17. Back lock holding camera back
18. Slide for covering red observation window
19. Red observation window in camera back
20. Eyepiece of range-finder-view-finder combination





Super Ikonta BX has Built-in ASA-calibrated Exposure Meter

With the high speeds now used in candid photography and the sensitive emulsions of black-and-white as well as color film, the use of a photo-electric exposure meter is virtually mandatory. What is more practical than an exposure meter built right into the camera? Always at hand! A complete photographic outfit in one unit.



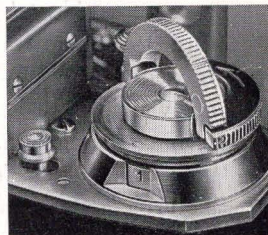
With the meter aimed at the scene, shutter speed and diaphragm settings are read directly off the dials on the control knob, where they can be referred to later, if desired.

The semi-automatic loading feature of the Super BX sets the picture counter and does not require use of the red window for the first exposure.

In design, construction and operation Super Ikonta B and BX are the most advanced roll-film cameras. See them and be convinced.

Made in the U. S. Zone of Germany.

Available accessories include locking cable release, synchro cord, lens shade, yellow, yellow-green, orange and red filters, Bernotar polarizing filter, Proxar close-up lenses, etc. See price list.



Counter of BX. Pressing a button after closing back sets counter in position.

