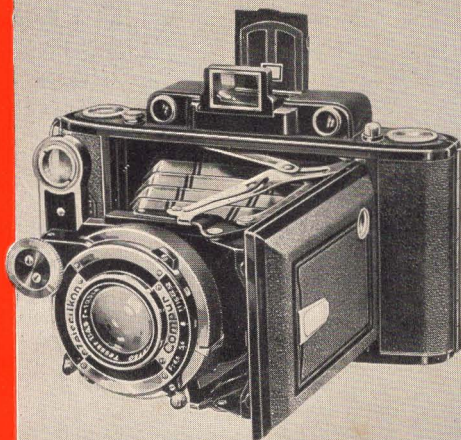


SUPER IKONTA

MINIATURE CAMERAS

Auto-focusing

WITH
ZEISS TESSAR
LENSES



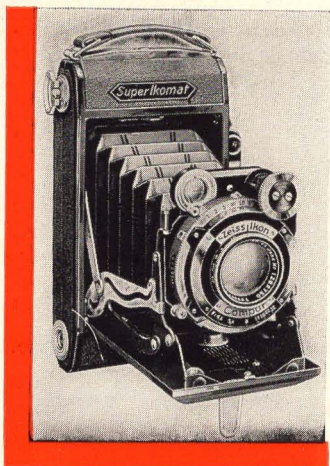
SUPER IKONTA CAMERAS

are precision instruments



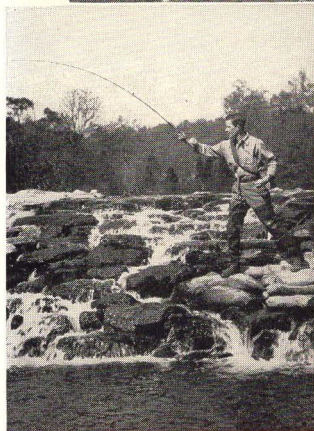
Equipped with world-famous **ZEISS TESSAR LENSES**

In every branch of photography the Tessar has demonstrated its superiority. It is the favorite lens of thousands of professional photographers in all parts of the world; it meets the exacting demands of press photographers, motion picture camera men, and aerial photography.

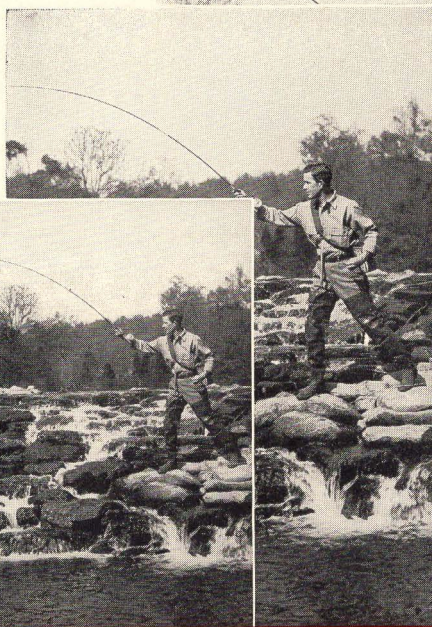


A camera having such a fine lens, and such an accurate range-finder as is used in the Super Ikonta models, must of necessity be *precision built throughout*. You will also find that your Super Ikonta is exceptionally sturdy and handsome. Its strong metal housing is covered with genuine black leather; corners are black enameled, and all parts subject to handling are heavily nickel plated.

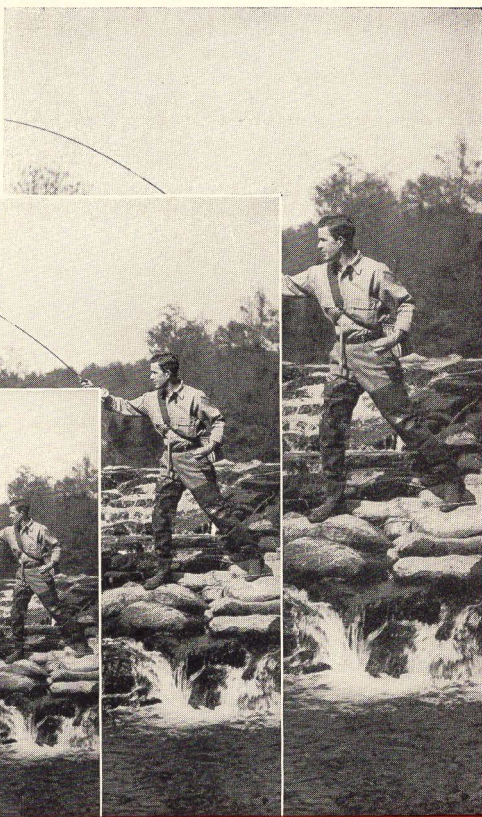
1 5/8 x 2 1/4



2 1/4 x 3 1/4

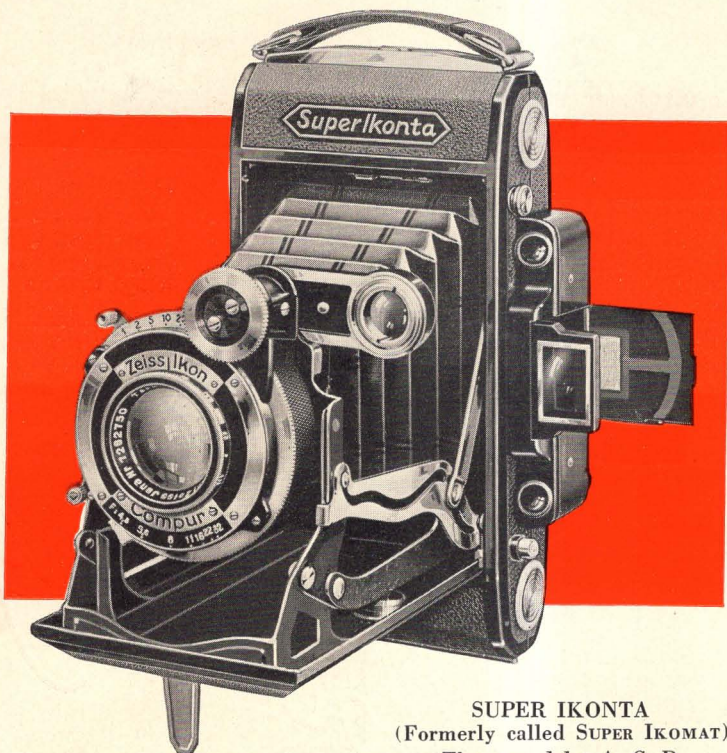


2 1/2 x 4 1/4



MODEL

	FILM SIZE	PICTURE SIZE		ZEISS TESSAR LENS	COMPUR SHUTTER SPEEDS	DIMENSION OF CAMERA INCHES	WT. OZS.
		8	16				
		PICTURES					
A	2 1/4 x 3 1/4	—	1 5/8 x 2 1/4	F/3.5, 7 cm	1 to 1/300 T & B	4 1/2 x 3 x 1 5/8	19
C	2 1/4 x 3 1/4	2 1/4 x 3 1/4	1 5/8 x 2 1/4	F/4.5, 10.5 cm	1 to 1/250 T & B	6 1/4 x 3 1/8 x 1 3/4	29
C	2 1/4 x 3 1/4	2 1/4 x 3 1/4	1 5/8 x 2 1/4	F/3.8, 10.5 cm	1 to 1/250 T & B	6 1/4 x 3 1/8 x 1 3/4	31
D	2 1/2 x 4 1/4	2 1/2 x 4 1/4	2 x 2 3/8	F/4.5, 12 cm	1 to 1/400 T & B	6 3/4 x 3 3/8 x 1 3/4	33 1/2



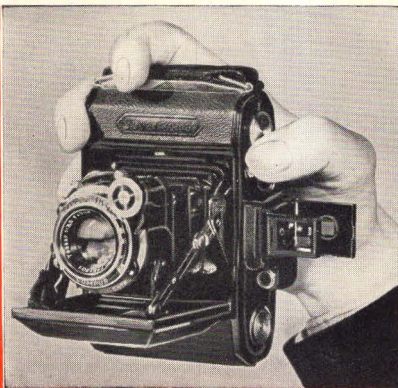
SUPER IKONTA
(Formerly called SUPER IKOMAT)
Three models: A, C, D

EVERY feature to insure good pictures is yours when you own a Super Ikonta: — Automatic Range-finder Focusing; the world-renowned Zeiss Tessar Lens; Compur Shutter; and precision construction that reflects the high standards and quality traditions of Zeiss Ikon . . . Yet, considering all this, Super Ikonta models are moderately priced.

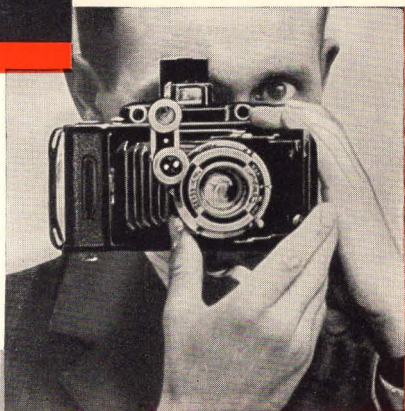
Models A, C and D*, described herein, are ideally suited to candid photography, as well as for all-around use. Small, compact, inconspicuous, ready in an instant, a Super Ikonta will enable you to catch your subjects unawares . . . You will get pictures that are natural, unposed, true-to-life.

*Super Ikonta B differs in construction from the above. Its negative size is $2\frac{1}{4}$ " x $2\frac{1}{4}$ ". Special folder on request.

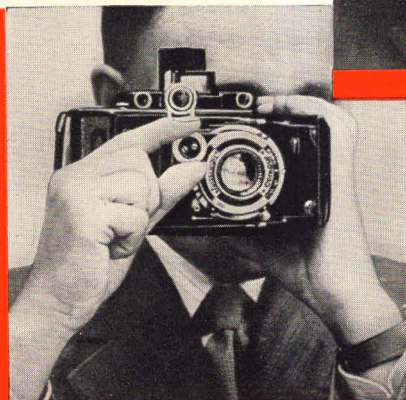
As simple as 1-2-3



1 Pressing a button automatically opens camera and optical view finder.



2 The scene is quickly framed with optical view finder.



3 Turn of a button automatically focuses range-finder and lens—no guessing distance.

. . . *The Hair-line Accuracy*

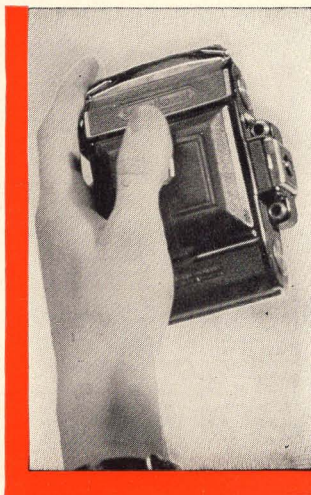
of focusing obtained with the range-finder enables you to use your Super Ikonta *at full aperture*, thus utilizing all the speed of your fine Tessar lens. The sharp negatives produced permit enlargements to unusual size. Poor focusing, a frequent cause of wasted film, is entirely eliminated—a real economy.

The three Super Ikonta models, A, C and D, offer you a choice of three extremely popular and universal Zeiss Tessar Lenses—F:3.5, F:3.8, and F:4.5.

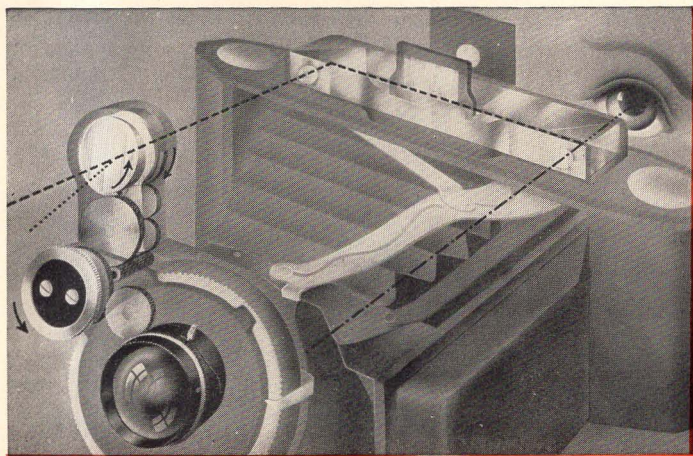
Models C and D take either 8 pictures of the respective roll-film size or, by inserting a mask, 16 pictures of about half size. Model A takes 16 pictures. Full details regarding picture size, shutter speeds, etc. are shown on last two pages.

Super Ikontas also have the 2-dot system for focusing. Simply set the red dot on the distance scale and the red dot on the diaphragm scale, and the camera is ready for all pictures where average definition and exposure may suffice. Of course, if critical definition of the picture is desired, the auto-focusing range-finder should be used.

If you want ease of operation, accuracy and fine pictorial results, do not fail to examine the Super Ikontas.



NEAT — COMPACT
INCONSPICUOUS



Automatic-focusing Super Ikonta Range-finder

Focusing of the Super Ikonta Cameras is remarkably simple. It is achieved by the reflecting surfaces of a glass rod, housed on the top of the camera, and by two prismatic lenses mounted in front of one of these reflecting surfaces. The range-finder shows two images of the object being photographed—the one seen through the front prismatic lens system and the other seen directly. Turning the milled button revolves the range-finder lenses, superimposing the two images with hair-line accuracy and the same operation automatically displaces the front element of the Tessar objective inward or outward. Thus the camera is focused. You are ready for a critically sharp and perfect shot.

The glass rod forms a rigid and unchangeable basis, and the two prismatic lenses are not sensitive to exterior influence. Therefore the range-finder of the Super Ikontas combines high precision with immunity from shock or bending such as never realized before.

P R I C E S

SUPER IKONTA A

With Carl Zeiss Tessar F/3.5, Compur shutter, no case.....	100.00
Portrait lens #995/17 for 23 inches.....	3.00
Eveready leather carrying case.....	8.00
Leather carrying case.....	3.25
Soft leather pouch.....	3.25

SUPER IKONTA C

With Carl Zeiss Tessar F/4.5, Compur shutter, no case.....	97.00
with Carl Zeiss Tessar F/3.5, Compur shutter, no case.....	114.00
Portrait lens #995/24 for 30 inches.....	4.00
Portrait lens #995/25 for 20 inches.....	4.00
Eveready leather carrying case.....	9.00
Leather carrying case.....	3.75
Soft leather pouch.....	4.00

SUPER IKONTA D

With Carl Zeiss Tessar F/4.5, Compur shutter, no case.....	107.00
Portrait lens #995/27 for 38 inches.....	4.00
Portrait lens #995/23 for 26 inches.....	4.00
Eveready leather carrying case.....	10.00
Leather carrying case.....	4.50
Soft leather pouch.....	4.00

P R I C E S O F F I L T E R S A N D S U N S H A D E S

	32 mm diameter for Super Ikonta A	37 mm diameter for Super Ikonta C and D
Zeiss Yellow Filter		
Light	L x 32 \$6.00	L x 37 \$6.00
Dark	D x 32 6.00	D x 37 6.00
Zeiss Ikon		
Light Yellow G1.....	4.00	4.00
Medium Yellow G2.....	4.00	4.00
Dark Yellow G3.....	4.00	4.00
Ultra-violet G0	4.00	4.00
Blue B5	4.50	4.50
Yellow-green GR5.....	4.50	4.50
Green GR10	4.50	4.50
Light red R10.....	4.50	4.50
Orange G4.....	—	4.50
Sunshades	2.00	2.25

CARL ZEISS, INC.
 485 Fifth Ave., New York
 728 S. Hill St., Los Angeles