

ADLAKE CAMERAS



A
Prize
Winner



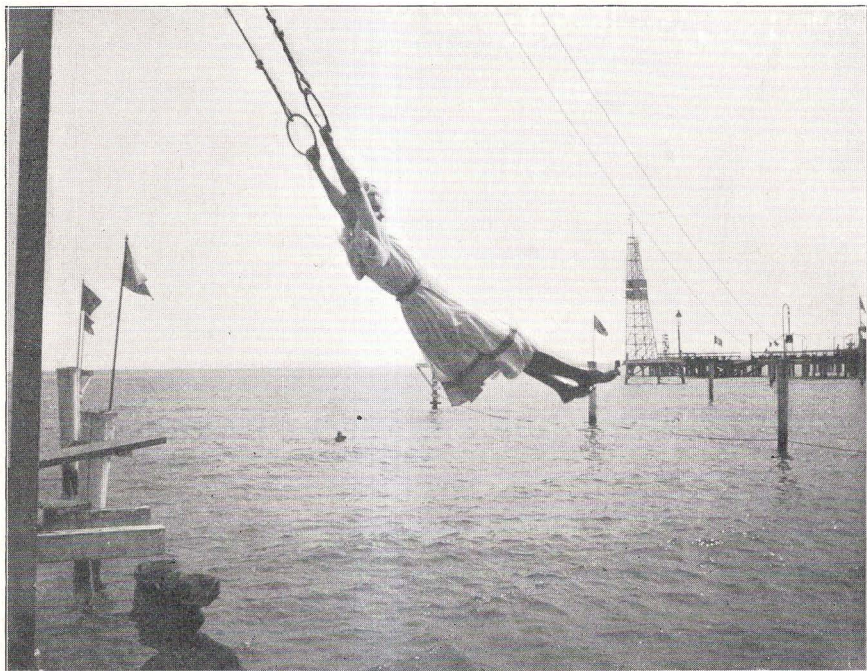
Negative by
GEO. G. YEOMANS
Chicago
Taken with an
ADLAKE, with
Portrait
Attachment

ADLAKE CAMERAS



THE ADAMS & WESTLAKE COMPANY

110 ONTARIO STREET: CHICAGO



Taken with an ADLAKE

Negative by J. A. MOSHER, Chicago

Manhattan Beach

Attachments for '99 Adlake Cameras

Adlake Portrait Attachment

given with each camera, enables one to take good-sized portraits at a distance of three, four, or six feet. This is an advantage which few fixed-focus cameras possess, and greatly increases the usefulness of the camera.

Adlake Panoramic Device

is another attachment furnished without charge with each camera. Panoramic pictures are made by taking several photographs (each slightly overlapping) of as large an arc as may be covered on the plate. The prints are trimmed at the sides, so when joined together they make one continuous photograph. If, when taking panoramic pictures, the tripod screw socket in the *center* of the camera is used, the angles of the circle overlap, which, with the overlapping of the prints, causes double waste. With the *Adlake*, you save the extra waste caused by the overlapping of the angles.

Adlake Multiplex Attachment

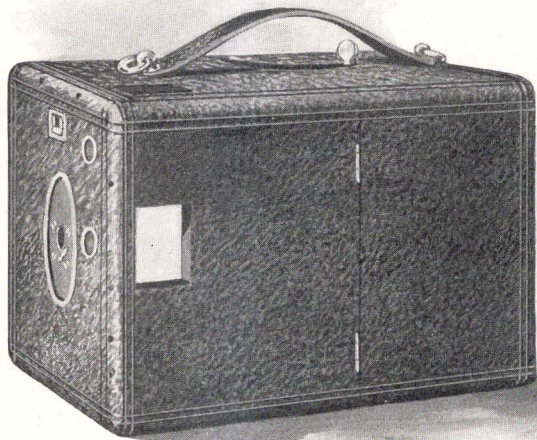
costs \$1.00. By it you can take two or four pictures on one plate. A person may be photographed in four different positions, all on one plate, or photographed playing cards with himself on opposite sides of a table, etc. This attachment will cause a good deal of interesting experiment and considerable amusement.

Adlake Metal Shutters

used on all cameras, are mounted on metal, and are not affected by warping, shrinking or swelling of the shutter board. Beware of cameras having parts of shutters mounted on wood.

A D L A K E

Folio 6



The Adlake Regular & Adlake Special Cameras

$3\frac{1}{4} \times 4\frac{1}{4}$ & 4×5

The Adlake Regular & Adlake Special Cameras

are unquestionably the best for amateurs. The twelve light-proof plate-holders accompanying each camera allow the use of two or more kinds of plates, at the pleasure of the operator. When loaded, the holders may be adjusted in, and taken out of the camera in broad daylight. If you want to remove one or more exposed plates from the camera you need only open the hinged cover and lift out the holder or holders wanted, leaving the unexposed plates undisturbed. No other fixed-focus camera is so convenient, safe and economical in use; no other camera will show so high a proportion of good pictures, and, everything considered, no other camera is so satisfactory as the *Adlake*.

Specifications

The box is made of tough, light wood, covered with black seal grain-leather. The two finders are unusually large, and the finder-boxes in the 4 x 5 are made of metal. The lens is the best achromatic single meniscus the Bausch & Lomb Optical Company *can make*; no such lens in any other fixed-focus camera. The lens can be easily and quickly removed for cleaning. There are four stops, numbered according to the F system.



Taken with an ADLAKE

Negative by H. T. LOCKWOOD, New York

Comrades Three

The Adlake Shutter

(used on all our cameras) is mounted on metal. It cannot be affected by any possible shrinking, warping or swelling of the shutter-board. This shutter is of a high order of plan and work, will wear forever, and cannot get out of order.

Adlake Plate-Holders

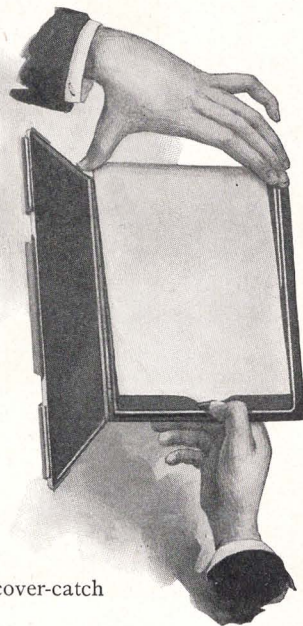
are very compact. They are light, thin steel or aluminum portfolios, formed at the edges to shut out light, and blackened, and open and close like a watch-case. The plate-holders are numbered from one to twelve, for convenience in keeping a record of exposures. There are no other plate-holders so good—no exception—whatever the cost of the camera.

Metal trimmings protect all openings on the 4x5-inch cameras. On the $3\frac{1}{4} \times 4\frac{1}{4}$ -inch everything is protected except the lever-groove.

Adlake Portrait Attachment

and Adlake Panoramic Device accompany each camera. The Adlake Multiplex Attachment may be used on both sizes. (*For descriptions of these see Folio 5.*)

The cameras have the *standard tripod screw sockets*. Adlake patented cover-catch on all *Adlake* cameras.





Taken with an ADLAKE

Negative by GEO. G. YROMANS, Chicago

Government Building, Omaha Exposition

Prices

Adlake Regular

3¼ x 4¼-inch (with 12 steel plate-holders) . . \$ 6.50

Adlake Regular

4 x 5-inch (with 12 steel plate-holders) . . . 10.00

Adlake Special

4 x 5-inch (with 12 *aluminum* plate-holders) 12.00

We cannot furnish the 3¼ x 4¼-inch with aluminum plate-holders.

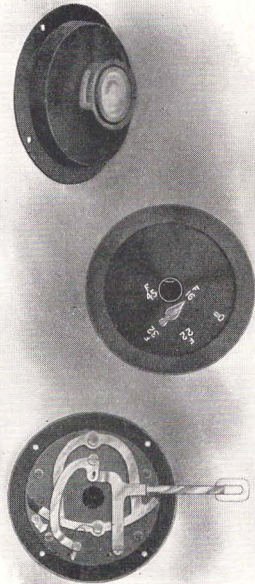
The Only Difference

between the 4x5-inch Regular and Special Cameras is in the plate-holders; otherwise they are alike.

Buy of Your Own Dealer

if you have any such. If not, we send the camera and sundries, express paid, anywhere in the United States—*not sundries alone.*

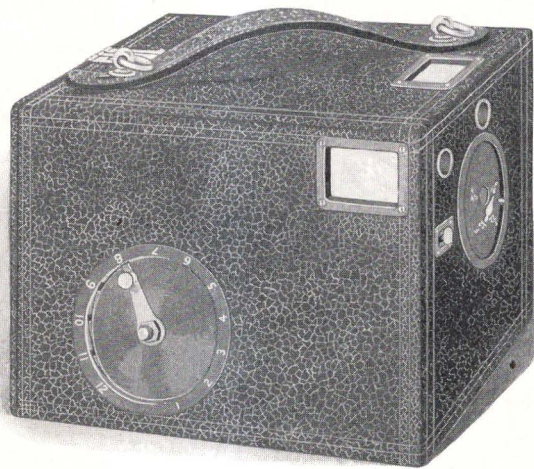
The Adams & Westlake Company
Chicago



Adlake Shutter

A D L A K E

Folio 12



The Adlake Repeater

$3\frac{1}{4} \times 4\frac{1}{4}$ & 4×5

The Adlake Repeater

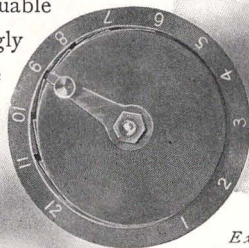
is a particularly appropriate name for our new magazine camera. In plan and action it is somewhat similar to the repeating rifle. It holds a dozen plates, which may be exposed in rapid succession by a slight turn of a lever, which removes the exposed plate and allows a fresh plate to move forward, ready for exposure.

The Exposure-Counting Device

indicates the number of exposures made, and its locking arrangement makes it impossible to release more than one plate at a time. This is a valuable feature, because in other magazine cameras, unless you are exceedingly careful, you are liable to release more than one plate. As we have applied for a patent on the device, this feature cannot be copied without infringement.

Our Patented Catch

(used on all our cameras) prevents the box from being opened accidentally. Many plates may be spoiled on account of a poor, cheap catch. The importance of this feature should not be overlooked.



*Exposure-
Counting Device*

The Exposure Locking-Device

securely locks the exposed plates, and they cannot be removed except at the pleasure of the operator. You can throw the camera about as much as you choose, but the plates cannot be dislodged by accident. To obtain satisfactory pictures, it is necessary to keep the lens clean. In nearly all popular-priced cameras the lens cannot be taken out, and, consequently, cannot be cleaned properly. The lenses in all *Adlake Cameras* may be removed quickly and easily.

The Repeater is Always Ready for Action

is extremely simple in construction, and positive and rapid in operation. It is possible with the *Adlake Repeater* to take *twelve* pictures in *ten seconds*. No one but the veriest novice, however, will attempt to take a dozen pictures (?) in one second or in one hundred seconds with any camera. Such waste is profitable to the plate-maker, but expensive to the amateur; it is not photography.

No loose springs; nothing to lose or mislay.



Patented
Catch

Specifications

The box is made of tough, light wood, covered with black seal grain leather. There are two finders. The lens is the same as used in the *Adlake Regular*.

Adlake Shutters

(used on all our cameras) are mounted on metal, and are not affected by warping, shrinking, or swelling of the wood. There are four stops numbered according to the F system. The metal sheaths which hold the plates are made of thin, black metal, and numbered from one to twelve, for convenience in recording exposures.

All openings are protected by blackened metal trimmings. The indicator and exposing device is also blackened. The cameras have the standard tripod screw sockets.

Adlake Portrait Attachment

and Adlake Panoramic Device accompany each camera. The Adlake Multiplex Attachment costs \$1.00 extra. (*For descriptions of these see Folio 5.*)

Prices

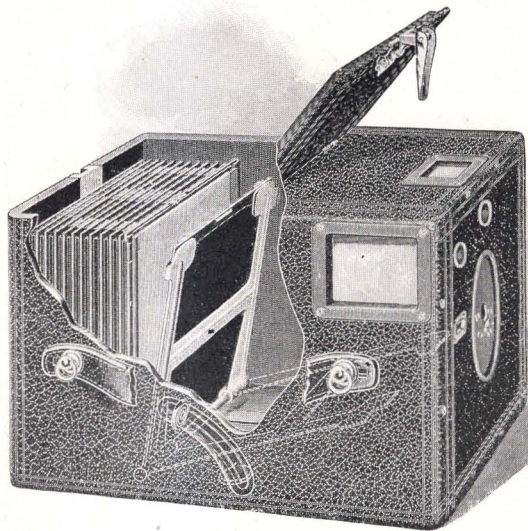
Adlake Repeater, $3\frac{1}{4} \times 4\frac{1}{4}$ -inch	\$5.50
Adlake Repeater, 4 x 5-inch,	8.00

Buy of Your Own Dealer

if you have any such. If not, we send the camera and sundries, express paid, anywhere in the United States—*not sundries alone.*

A D L A K E

Folio 16



This is the Adlake Regular
The side is partly cut out to show interior

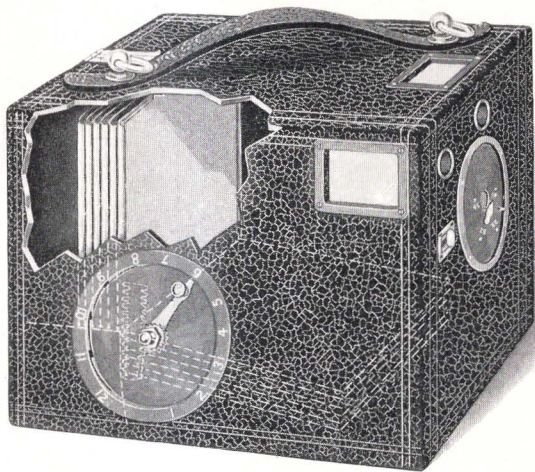
In the Picture Opposite

You see the dozen plate-holders at the left of the metal partition, the front of which has a groove on each side. The front plate-holder, partly open, is loaded, and is held in position by the grooves in the metal partition. The cover of the plate-holder has two projections at the sides, which fit into the H-shaped fingers operated by the exposure lever. On the side of the box is a curved opening, nearly crescent-shaped. The plate-holder is opened by moving the exposure lever down this curve. After exposure the plate-holder is closed by simply reversing the operation. The camera is then opened and the plate-holder lifted out and placed in the magazine back of the partition. Another holder is taken from the magazine and placed in front of the partition. The plate-holders are light-tight and dust-proof, and can be handled in broad daylight without danger of fogging the plates.

The Adams & Westlake Company
Chicago

A D L A K E

Folio 18



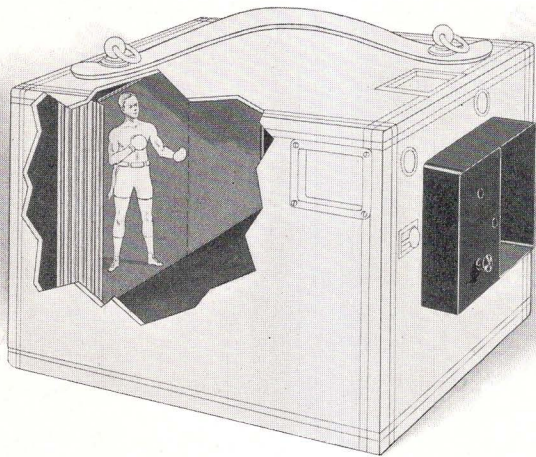
This is the Adlake Repeater
The side is partly cut out to show interior

The Picture Opposite

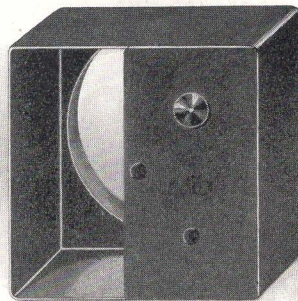
Represents the Repeater with a portion of the top and side cut out to show the internal mechanism. You will notice six plate-holders standing upright at the back of the camera. The holders have projecting wires at the bottom (represented by dots) and rest upon metal slides. The front holder (the top rests against a thin strip), has its wires between the teeth of the notched arm. After exposure, the lever is moved one number, which lowers the arm and holder and allows the latter to pass the top strip and fall to the bottom, as indicated by the dotted lines. After the plates are exposed they are raised and released by reversing the lever. A strong spring behind the plate-holders (spring is not shown in cut) moves them forward and keeps the front plate in focal plane. The entire back is hinged and securely fastened by the lock at the top.

The inside of the box is entirely open and there are no obstructions of any kind.

The Adams & Westlake Company
Chicago



This illustration is intended to show outline of camera with the Multiplex Device in position, and picture on half of the plate. It will be noticed that the picture is opposite the opening in the front of the device.



Multiplex Device

The Multiplex Device

Illustrated on the opposite page, enables you to take two or four pictures of one object on the same plate. Very amusing pictures can be obtained. It is placed in front of the shutter, as shown in illustration. If two pictures are wanted on the plate, the object is placed in front of the *open* half of the device, photographed, and then the multiplex device is given a half-turn and an exposure made on the other half of the plate. The object to be photographed will have to be placed in position each time. If four photographs are wanted on one plate, the slide on front of the device is turned around, leaving a quarter-opening, and four exposures made, a quarter-turn being given the device after each exposure. With doubles, the pictures on the plate will be opposite to the device-opening and with quadruples they will be diagonally opposite.

The Multiplex Device can be used on '97 and '98 Model Adlake Cameras, but when ordering it will be necessary to state the camera number.

Price, \$1.00

Price List of Photo Materials

ADLAKE Carrying Case, black leather carrying case, 4 x 5, with shoulder strap, each, . . \$2.50

ADLAKE Carrying Case, black leather carrying case, $3\frac{1}{4} \times 4\frac{1}{4}$, with shoulder strap, each, 2.00



*Adlake Ruby
Lamp*

ADLAKE Special Extra Rapid Dry Plates, 4 x 5, per dozen,65

ADLAKE Special Extra Rapid Dry Plates, $3\frac{1}{4} \times 4\frac{1}{4}$, per dozen,45

STANLEY Extra Rapid Dry Plates, 4 x 5, per dozen,65

STANLEY Extra Rapid Dry Plates, $3\frac{1}{4} \times 4\frac{1}{4}$, per dozen,45

SEED'S 27 Gilt Edge Dry Plates, 4 x 5, per dozen,65

SEED'S 27 Gilt Edge Dry Plates, $3\frac{1}{4} \times 4\frac{1}{4}$, per dozen,45

SEED'S Instantaneous Non-halation Plates, 4 x 5, per dozen,80

SEED'S Instantaneous Non-halation Plates, $3\frac{1}{4} \times 4\frac{1}{4}$, per dozen, \$0.55

ADLAKE Dark-Room Lamp. Has a ground and spectroscope-tested ruby glass, and gives an absolutely safe light. Burns oil and the flame is adjustable from the exterior. By means of our binding spring the shield can be raised and lowered to any position desired. Each, 1.00

TIN Candle-Lamp, each,40

DEVELOPING Trays, black, smooth and strong. Acid and alkali proof, 4 x 5, each,20

DEVELOPING Trays, black, smooth and strong. Acid and alkali proof, $3\frac{1}{4} \times 4\frac{1}{4}$, each,15

GRADUATES, 2-ounce, each,20

GRADUATES, 4-ounce, each,30

GRADUATES, 8-ounce, each,40

SMALL Balances, for weighing chemicals, 1.00

Price List of Photo Materials—*continued*

ADLAKE Developing and Printing Outfit,
4 x 5. An exceedingly good outfit. Price, \$3.00

CONTENTS:

- 1 Adlake Oil Lamp
- 4 Trays
- 1 4 x 5 Printing Frame
- 1 4-ounce Graduate
- Adlake Developer Powder, for 20 ounces of solution
- Adlake Fixing Powder, for 8 ounces of solution
- Adlake Combined Toning and Fixing Powder, for 8 ounces of solution
- 1 dozen Adlake Printing Paper
- 1 dozen 4 x 5 Mounts



Adlake Developing and Printing Outfit, 4 x 5

HARD Rubber Fixing Baths, 4 x 5. Each bath holds 12 plates, each, 2.25

METAL Fixing Baths, coated with preparation impervious to hypo. Hold 7 plates. Price, $3\frac{1}{4} \times 4\frac{1}{4}$,50

METAL Fixing Baths, coated with preparation impervious to hypo. Hold 7 plates.

Price, 4 x 5, . . . \$0.50

ADLAKE Developing and Printing Outfit, $3\frac{3}{4} \times 4\frac{1}{4}$. Price, . . . 2.00

CONTENTS:

- 1 Tin Candle-Lamp
- 3 Trays
- 1 $3\frac{3}{4} \times 4\frac{1}{4}$ Printing Frame
- 1 2-ounce Graduate
- Adlake Developer Powder, for 20 ounces of solution
- Adlake Fixing Powder, for 8 ounces of solution
- Adlake Combined Toning and Fixing Powder, for 8 ounces of solution
- 1 dozen Adlake Printing Paper
- 1 dozen $3\frac{3}{4} \times 4\frac{1}{4}$ Mounts

Rubber Bath

ADLAKE Developer Powder, sufficient for 20 ounces of developing solution. Can be sent by mail,25

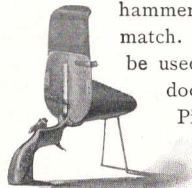
ADLAKE Fixing Powder, sufficient for 8 ounces of fixing bath. Can be sent by mail,15

ADLAKE Combined Toning and Fixing Powder, sufficient for 16 ounces of solution. Can be sent by mail,30

GLASS Funnels, $\frac{1}{4}$ -pint, 10c.; $\frac{1}{2}$ -pint,15

Price List of Photo Materials—*continued*

ADLAKE Flash-Light Pistol. A good, serviceable pistol. The charge is ignited by the hammer striking the head of a parlor match. The pistol with cover can be used for making flashes out-of-doors. Pistol, without cover, . \$0.75
Pistol, with cover, 1 00

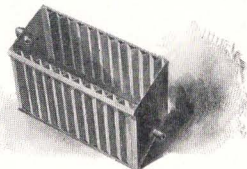


Adlake Flash-Light Pistol, with Cover

NEGATIVE Washing Box, for washing negatives after they have been fixed. Made of zinc. Holds 12 Plates, each, . 1 00

GLOBE No. 1 Negative Washer, 1 25
PRINTING Frames, 4 x 5, each, 25
PRINTING Frames, 3 1/4 x 4 1/4, each, 25
PRINTING Frames, 4 x 5, extra heavy; best frame made, each, 38
ADLAKE Printing-Out Paper, 4 x 5, per dozen, . 20
ADLAKE Printing-Out Paper, 3 1/4 x 4 1/4, per two dozen, 30
VELOX, Matt, Printing-Out Paper; can be printed by artificial light, 4 x 5, per dozen, . 25
VELOX, Matt, Printing-Out Paper; can be printed by artificial light, 3 1/4 x 4 1/4, per dozen, . 20

FRENCH Satin, Jr., Blue Print Paper, 4 x 5, per 25 sheets, \$0.20
FRENCH Satin, Jr., Blue Print Paper, 3 1/4 x 4 1/4, per 25 sheets,16
SQUEEGEE or Ferrotypes Plates, 10 x 14 inches, each,25
SQUEEGEE Rollers, 6-inch, each,35
AMATEUR Duplex Burnisher, a complete, well made, double roll, 6-inch burnisher, including either gas or oil heater. Price, including heater, 5 00
PHOTO Paste, 2-ounce jar,15
PHOTO Paste, 4-ounce jar,25
PHOTO Paste, 8-ounce jar,45
DEVELOPING, Printing and Mounting, each,15
DEVELOPING only, each,08
PRINTING and Mounting only, each, .10



Negative Washing Box

On orders for developing and printing less than one-half dozen, 15 cents extra will be charged.

Price List of Photo Materials—*continued*

NEGATIVE Racks, for holding negatives while drying, with grooves for 24 plates, each, \$0.25

NEGATIVE Racks, for holding negatives while drying, with grooves for 12 plates, each,20

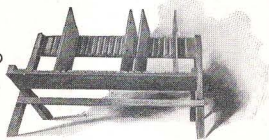
KARMA Toning Tablets, readily dissolve in water, per package,25

KARMA Toning Outfit, containing one box toning tablets, hypo and ounce measure,40

NEGATIVE Intensifier, for increasing the strength or density of negatives which are too weak to make good prints. Price, per 8-ounce bottle,35

NEGATIVE Reducer, for reducing the thickness or density of negatives which have been over-developed, and consequently print too slow. Price, per 8-ounce bottle,35

OPAQUE, for retouching negatives. Can be applied to either side of the negative and can be washed off if desired. Price, per 2-ounce bottle,40



Negative Rack

NEG-DRY, a solution for drying negatives in a few minutes. Hardens and preserves the film, preventing scratching or finger-marks. Price, per 4-ounce bottle, \$0.35

MOUNTS—“Allesso.” A new pattern rough surface, plain straight edge and round corners. Made, sage, steel gray or ash gray. This mount greatly enhances the beauty of the print. Cards 5 x 6 for 3¼ x 4¼ and 4 x 5 prints, per dozen,12
Per hundred,85

MOUNTS—“Roselli.” A very beautiful and stylish mount that does away with the pasting of prints. The corners of the photographs are slipped into pockets. Must be seen to be appreciated. Cards 6⅜ x 7⅜ for photos 3¼ x 4¼, from 4 x 5 plate, per dozen, .40
Per hundred,3.00

MOUNTS, No. 396, unenameled, wide embossed border, square corners, white, gray or sage green, for 4 x 5 prints, per dozen, . . .18
Per hundred,1.35
For 3¼ x 4¼ prints, per dozen,15
Per hundred,1.10

Price List of Photo Materials—*continued*

MOUNTS, No. 544, enameled both sides, white embossed border with narrow white line, square corners, white center, with Queen's gray border; an extremely handsome card, for 4 x 5 prints, per dozen, . . . \$0.30
 Per hundred, 2.25
 "FIRST Step in Photography," by F. Dundas Todd, Very complete; well illustrated; paper,25
 "THE Photographic Primer," by J. C. Millen, M. D., and J. C. Worthington. Highly recommended; in cloth, 1.00

ALBUMS—

No. 140, "Photog." 12 4 x 5 openings, . . \$0.50
 No. 142, "Photog." 24 4 x 5 openings, . . .75
 No. 130, "Photog." 12 3¼ x 4¼ openings, .50
 No. 132, "Photog." 24 3¼ x 4¼ openings, .75
 BADGER No. 55, 50 4 x 5 openings, . . 1.25
 BADGER No. 051, 50 3¼ x 4¼ openings, 1.25
 BADGER No. 76, 100 4 x 5 openings, . . 2.25
 BADGER No. 64, 100 3¼ x 4¼ openings, 2.00
 ADLAKE Print Trimmers. Have metal base, measure and steel knife. 1.50
 JAMES Print Trimmers,25



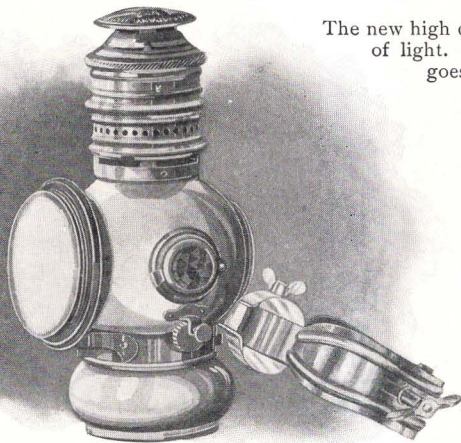
Price List of Chemicals

The quality of our chemicals will be found very satisfactory. We carry a large variety and can supply at short notice any chemicals not found in the list. Prices include containers:

ACID, Acetic, No. 8, 8-ounce bottle, . . .	\$.15	POTASSIUM, Bromide, ounce,	\$.20
ACID, Citric, ounce,20	POTASSIUM, Carbonate, pound25
ACID, Pyrogallic, Schering's, ounce,35	POTASSIUM, Oxalate, Neutral, per ½-lb., . .	.40
AMIDOL, ounce,75	POTASSIUM, Red Prussiate, ounce,10
ALUM, Chrome, pound,25	PLATINITE, Chloro-Platinite of Potassium,	
ALUM, Powdered, pound,15	15-grain vial,50
AMMONIA, Liq. Conc., pound,40	RODINAL, 3-ounce bottle,60
AMMONIA, Sulpho-Cyanide, ounce,20	SODIUM, Acetate, Cryst., 4-ounce bottle, .	.20
BORAX, ounce,05	SODIUM, Bi-carbonate, 4-ounce,15
EIKONOGEN, ounce,35	SODIUM, Carbonate, pound,15
GLYCIN, ounce,75	SODIUM, Hyposulphite, pound,06
GOLD CHLORIDE, C. P., 15-grain vial, . .	.60	SODIUM, Hyposulphite, 5 pounds,25
HYDROCHINON, ounce,35	SODIUM, Sulphite, Cryst., pound, corked	
IRON, Citrate of Ammonia, ounce,10	bottle,30
IRON, Proto. Sulph., pound,20	SODIUM, Sulphite, Granular, pound, corked	
LEAD, Acetate, ounce,15	bottle,35
METOL, ounce,75	SODIUM, Tribasic, Phosphate, 4-ounce bottle,	.25

The Improved X-Rays

THE BEST OIL LAMP EVER MADE FOR BICYCLE—FOR CARRIAGE
MADE OF ALUMINUM: HANDSOMELY FINISHED



The new high chimney makes perfect combustion and increases volume of light. Fitted with *New 1899 Rigid Bracket*, it never jars or goes out. No smoke; no oil leakage; nothing disagreeable about X-Rays Lamp.

The only Cycle Lamp using a Metal Chimney

Metal Chimney Facts — A powerful light, burning clear and steady under all conditions, can be produced only by the use of a chimney — if a metal chimney so much better — stands more abuse — will not break. A high chimney is still better.

"X-Rays" Lamps using the high metal chimney are built on the only correct principle for oil illumination.

First — The metal chimney feeds the air to the flame in a temperate manner, thereby producing a vigorous light.

Second — An oil light is sensitive. A sensitive light must have protection. The metal chimney prevents inflowing air currents, at high rate of speed, from causing it to flicker or blow out.

Third — The metal chimney causes an increased draught, which carries off the products of combustion and smoke, insuring cleanliness to the reflectors, lens and jeweled side lights.

We send the X-RAYS Lamp, express paid, anywhere in the U. S. for . . . \$3.00

Send us your address on a postal and we will mail you free either *Adlake* or *X-Rays Lamp Booklet*.

The Adlake Acetylene Cycle Lamp

ASK YOUR DEALER FOR IT: IT BURNS GAS

The first lamp on the market which combines all the correct principles for safely generating and burning acetylene gas with the greatest power of light.

It is handsomely finished. Is so simple in construction and so absolutely free from danger that children may handle it—light it—take it apart.

THE ADLAKE AUTOMATIC, SELF-CLEANING
WATER-FEED CONTROLLER
OR DROPPER

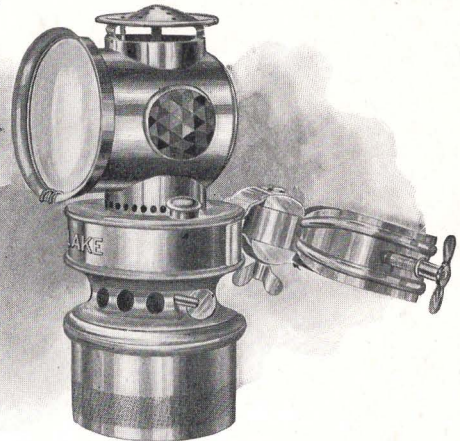
No wicks or absorbent material to rot or become clogged with the impurities from the water or gas.

No strands of wicking to pull out or put in to regulate the water supply.

The controller or dropper will last as long as the lamp.

Remember that only Adlakes have them.

The Adams & Westlake Company
110 Ontario Street, Chicago

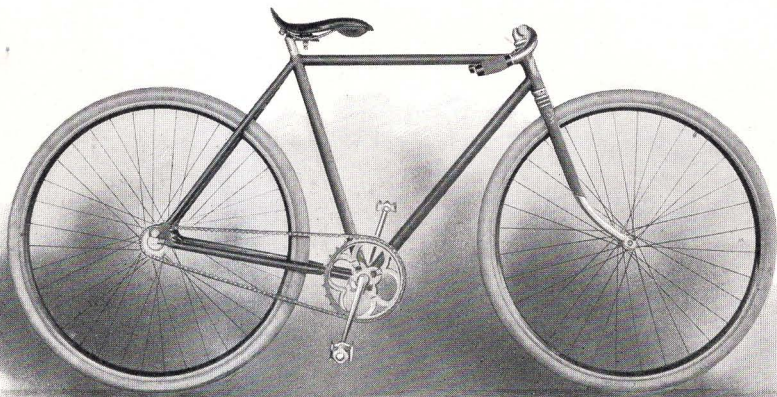


We send the ADLAKE, express paid, anywhere in the U. S. on receipt of . \$3.50

Booklet free.

A D L A K E

Folio 30



Adlake Special: Model A: \$60.00

30-inch

Adlake Bicycles

"The Wheels of High Degree"

Prices reduced for 1899—but quality remains the same

Adlake Specials

Model A, Roadster, 30-in. wheels, 22-in. frame, \$60.00
Model B, Roadster, 30-in. wheels, 24-in. frame, 60.00
Model C, Scorcher, 28-in. wheels, 20-in. frame, 60.00
Model R, Racer, 28-in. wheels, 22-in. frame, 60.00
Model E, Women's, 28-in. wheels, 21-in. frame, 60.00
Model F, Women's, 28-in. wheels, 23-in. frame, 60.00
Model G, Tandem, 28-in. wheels, 23-in. frame, 90.00
Model H, Tandem, 28-in. wheels, 23-in. frame, 90.00
Model K, Tandem, 28-in. wheels, 21-in. frame, 90.00

Adlakes

Model M, Roadster, 28-in. wheels, 22-in. frame, \$40.00
Model N, Roadster, 28-in. wheels, 24-in. frame, 40.00
Model P, Women's, 28-in. wheels, 21-in. frame, 40.00
Model S, Women's, 28-in. wheels, 23-in. frame, 40.00

Alaskas

Model T, Roadster, 28-in. wheels, 22-in. frame, \$30.00
Model U, Roadster, 28-in. wheels, 24-in. frame, 30.00
Model W, Women's, 28-in. wheels, 21-in. frame, 30.00

Adlake Specials, Models A and B, furnished with 28-in. wheels if so ordered.

Send for Complete Catalogue

The Adams & Westlake Company
Chicago





The Adams & Westlake Company
Factory